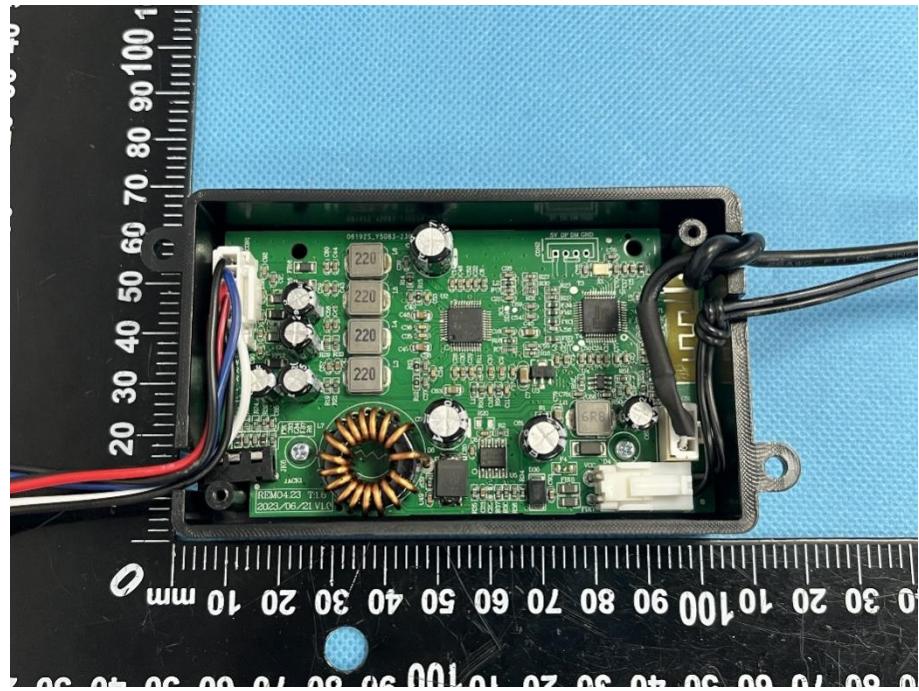
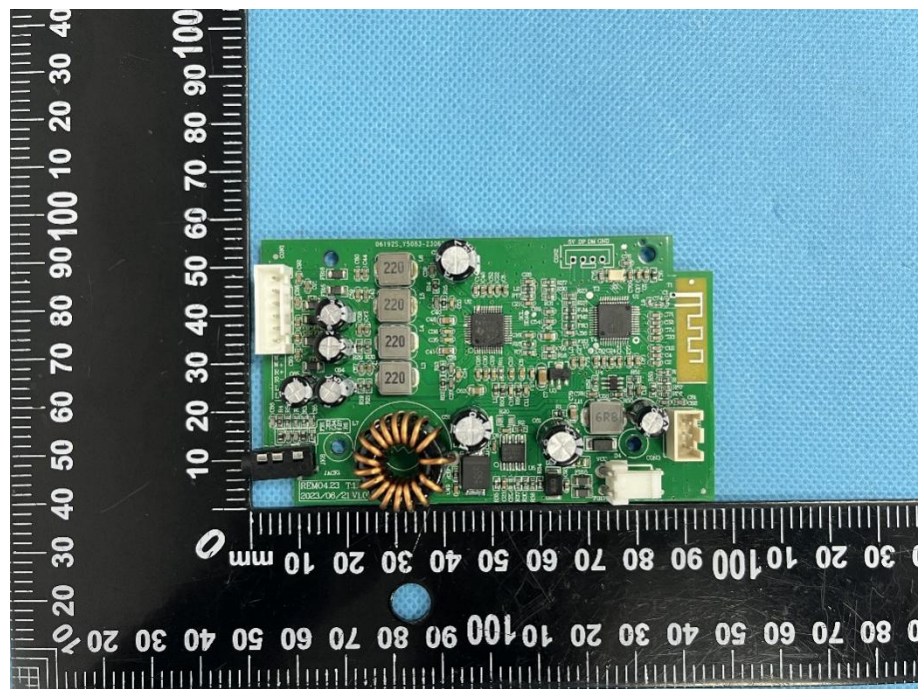


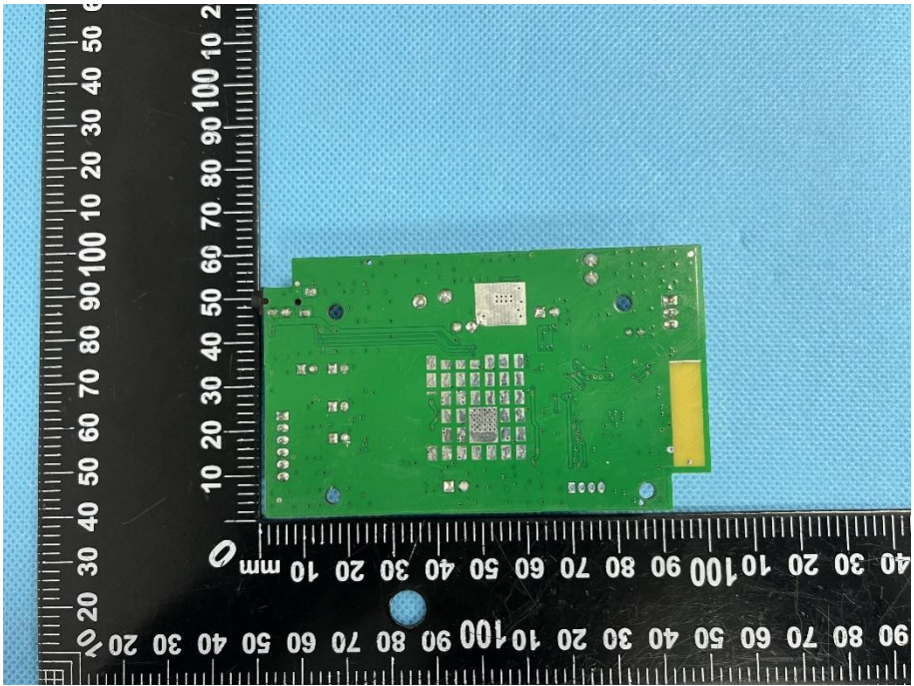

EXHIBIT 3 - EUT INTERNAL PHOTOGRAPHS

EUT Housing and Board View 1



Solder Board-Component View 1



<p>Solder Board-Component View 2</p>	 <p>A photograph of a green printed circuit board (PCB) component, likely a BT antenna, placed on a blue textured background. The component is rectangular and features a central chip, several smaller components, and a yellow solder mask on the right edge. A black ruler with white markings is positioned vertically to the left of the component, showing measurements in millimeters (0 to 100) and centimeters (0 to 10).</p>
<p>Antenna View</p>	<p>BT Antenna</p>  <p>A photograph of the same green PCB component from a different perspective, showing the underside. The board is populated with various electronic components, including several 220µF electrolytic capacitors, a large toroidal inductor, and a central integrated circuit. A red box highlights a specific component on the right side of the board, which is identified as the BT antenna. A red line points from the text label 'BT Antenna' to this highlighted component.</p>