
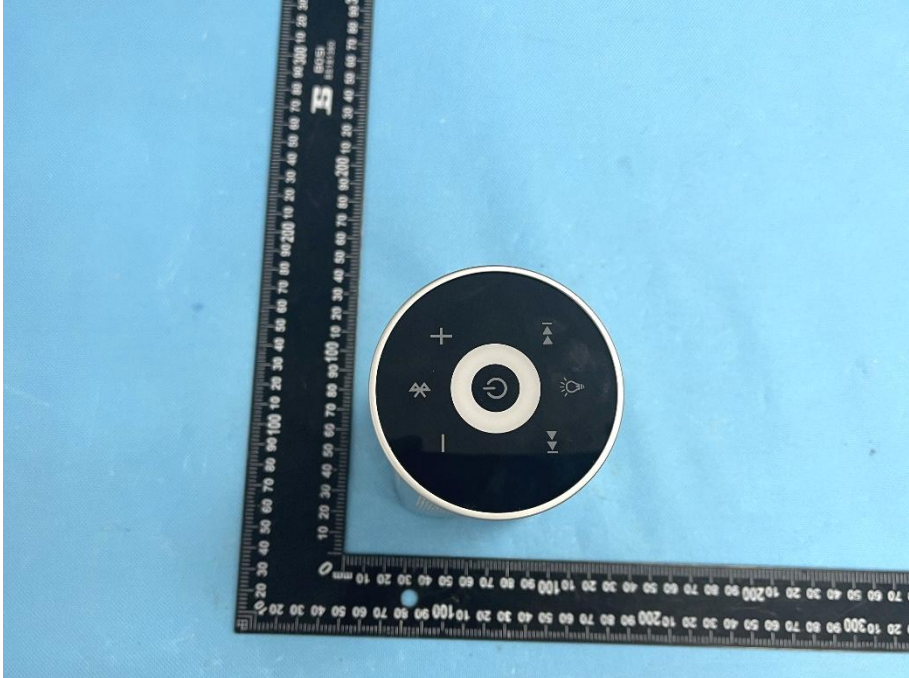


## EXHIBIT 2 - EUT EXTERNAL PHOTOGRAPHS

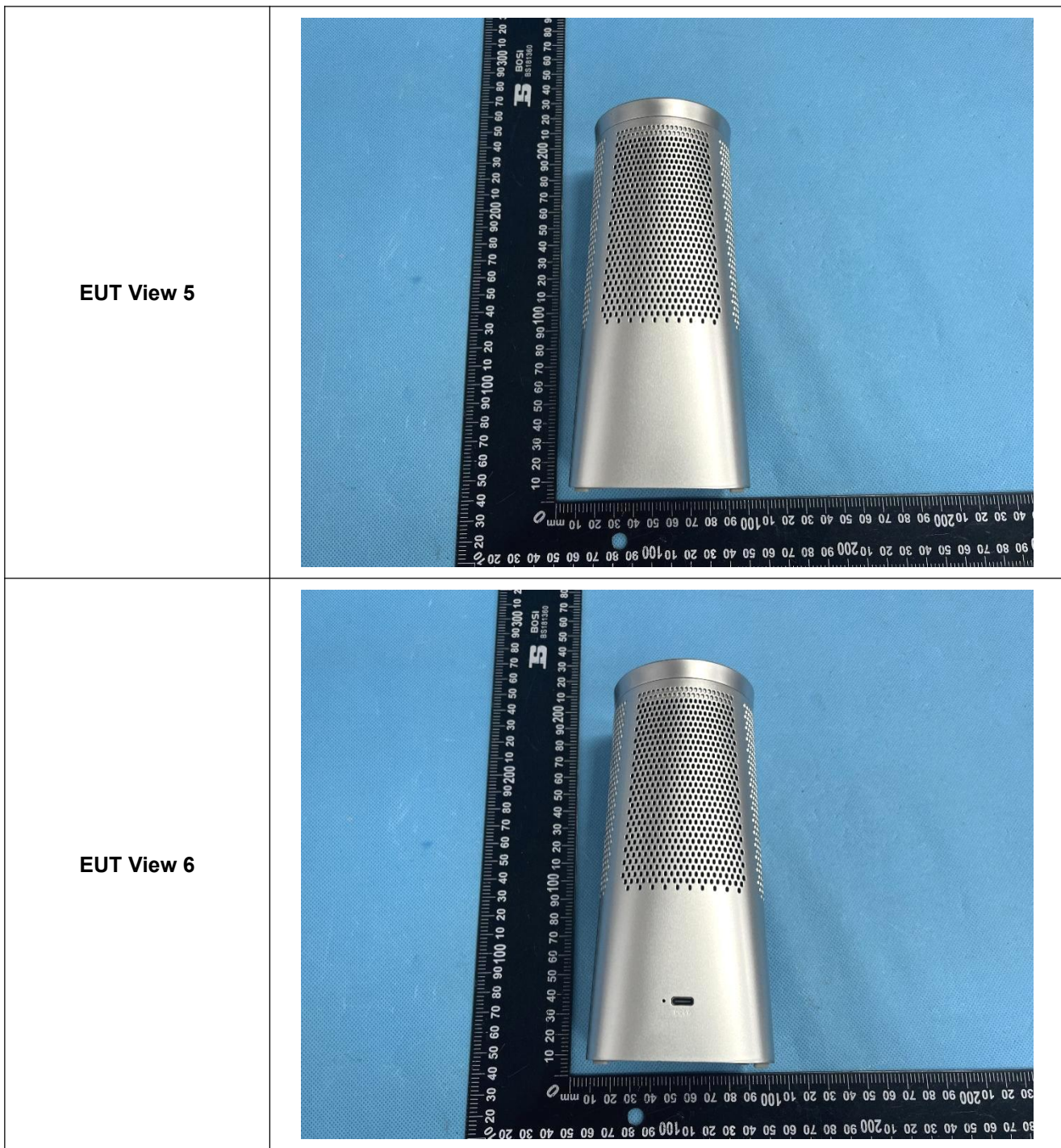
<p><b>EUT View 1</b></p>	 A photograph showing the external components of the EUT. On the left is a circular black device with a white control panel featuring a power button and four directional arrows. To its right are three cables: a white USB-A to USB-B cable, a black USB-A to a small black rectangular component, and a black power adapter with a USB-A input and a power plug. A black ruler is placed vertically to the left of the items for scale.
<p><b>EUT View 2</b></p>	 A close-up photograph of the circular black device. The white control panel is clearly visible, showing a central power button with a power symbol and four directional arrows (up, down, left, right). A black ruler is placed vertically to the left of the device for scale.

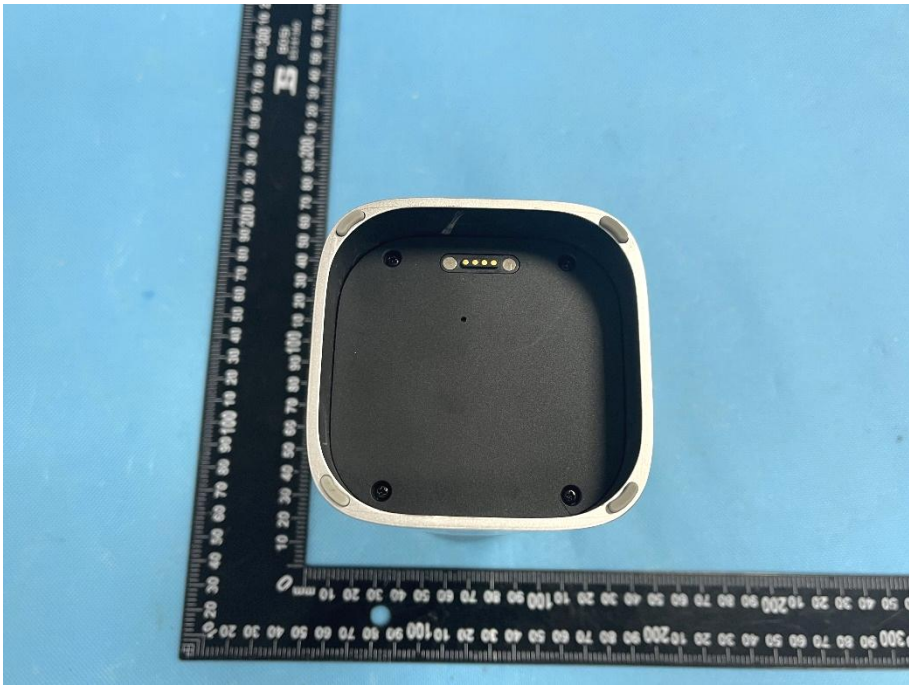
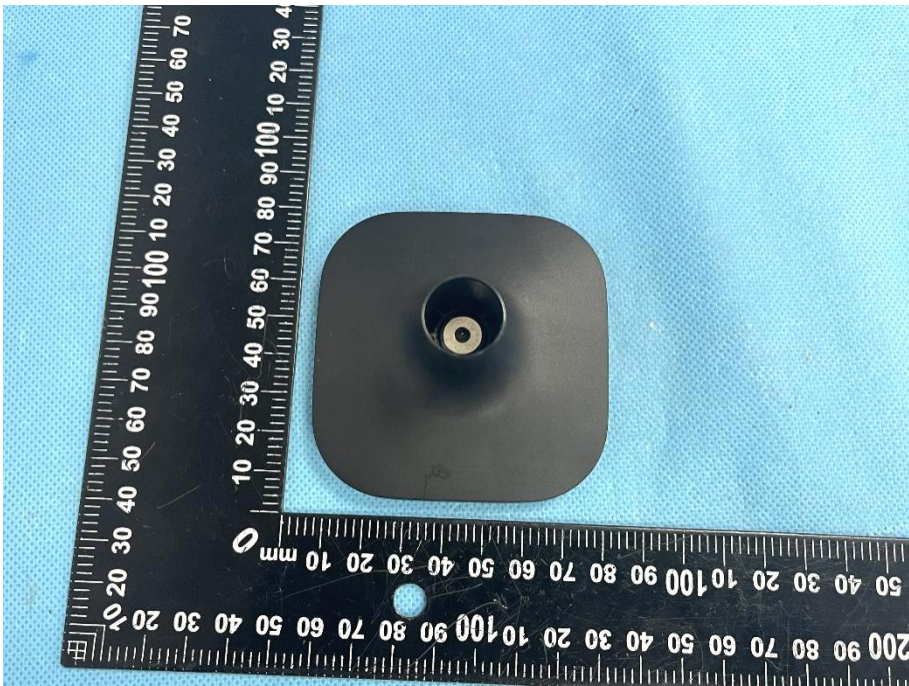
EUT View 3



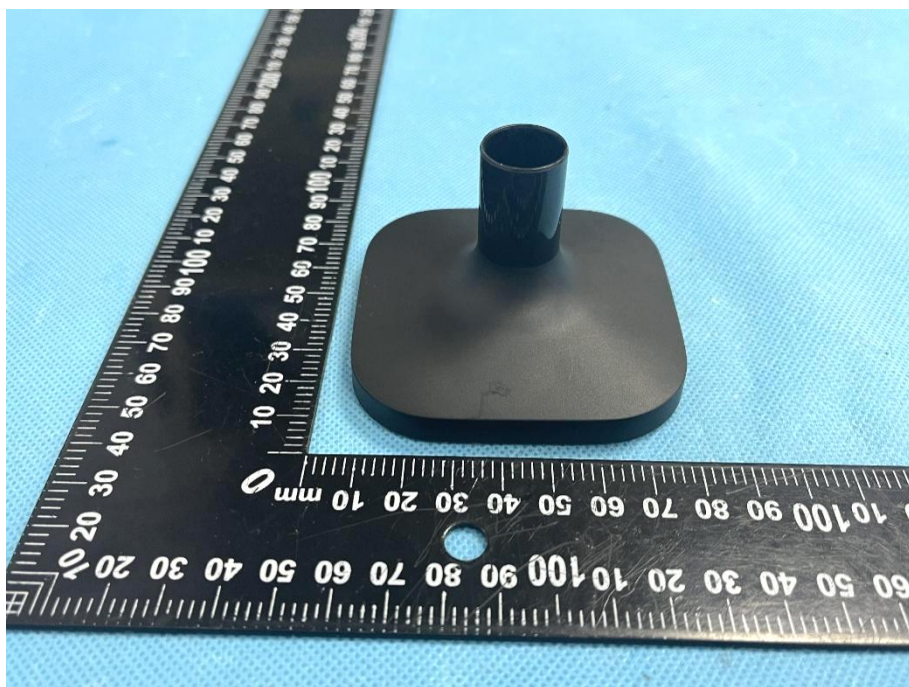
EUT View 4



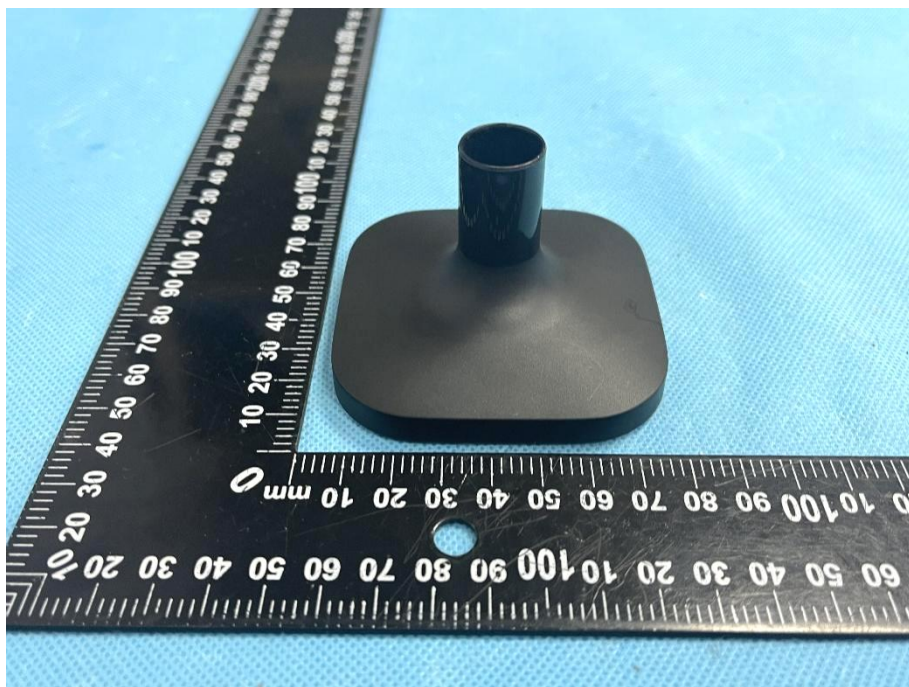


<p>EUT View 7</p>	
<p>EUT View 8</p>	

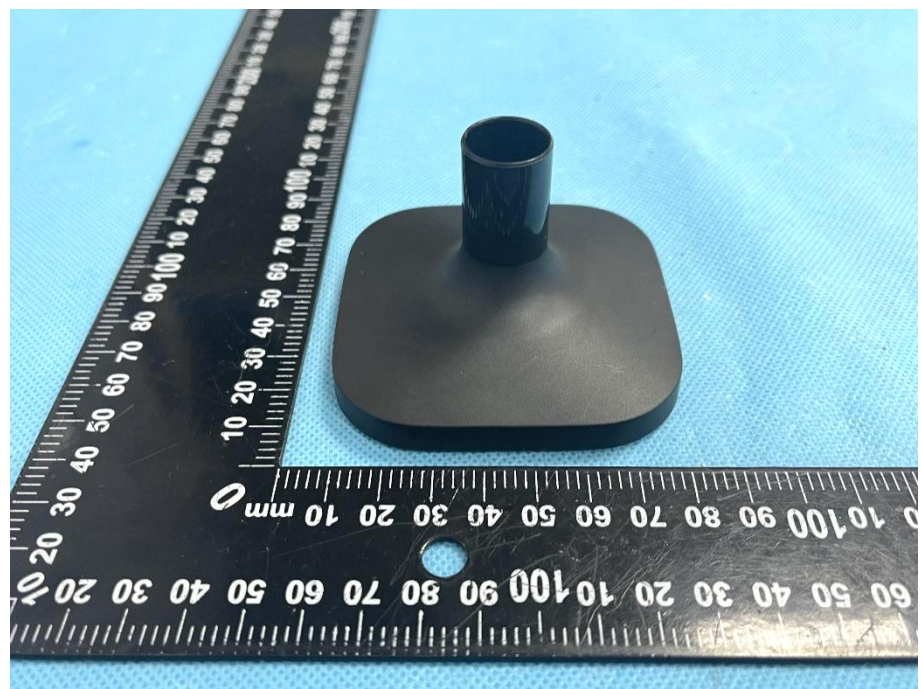
EUT View 9



EUT View 10



EUT View 11



EUT View 12



EUT View 13

