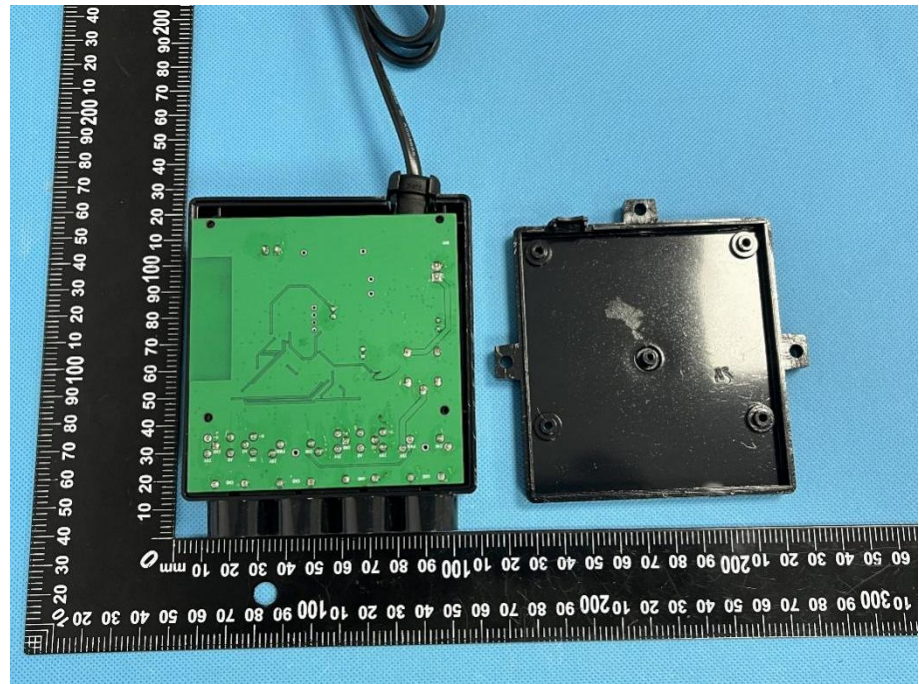
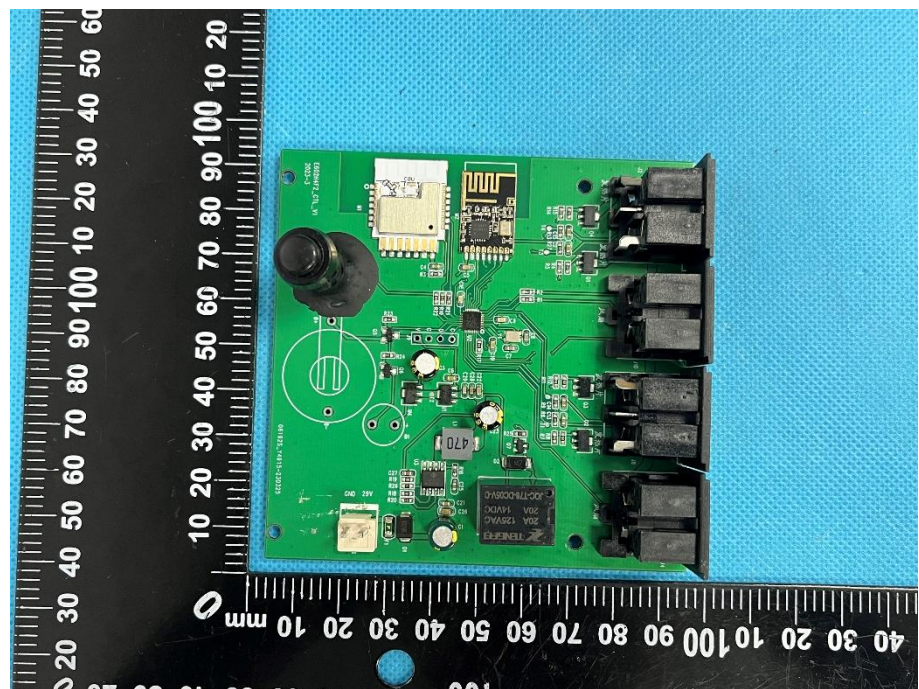


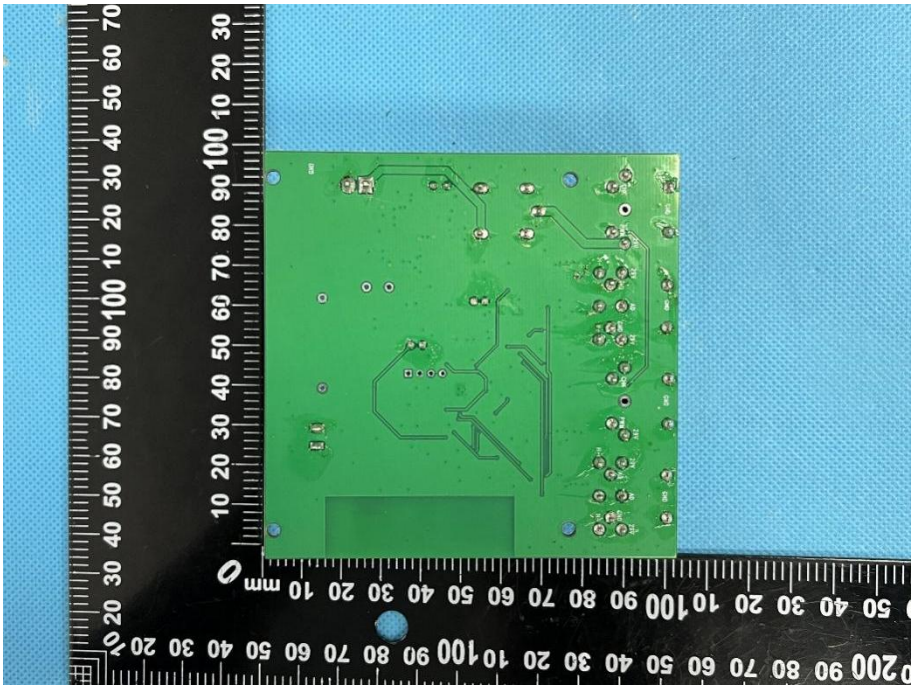

EXHIBIT 3 - EUT INTERNAL PHOTOGRAPHS

EUT Housing and Board View 1



Solder Board-Component View 1



<p>Solder Board-Component View 2</p>	 <p>A photograph of a green printed circuit board (PCB) with various electronic components and solder joints. The board is placed on a blue textured surface. A black ruler with white markings is positioned vertically to the left of the board, showing measurements in millimeters. The ruler has markings from 0 to 100 mm on the left side and 0 to 200 mm on the right side. The PCB features a central microcontroller, several resistors, capacitors, and a network of soldered connections.</p>
<p>Antenna View</p>	 <p>A photograph of the same green PCB from a different perspective, showing the antenna and other components. A red line points from a label to the antenna. The label is a white box with a red border containing the text "2.4G Antenna". The antenna is a small, rectangular component with a meandered pattern. Other components visible include a black lens, a network port, and several connectors on the right side of the board.</p>