

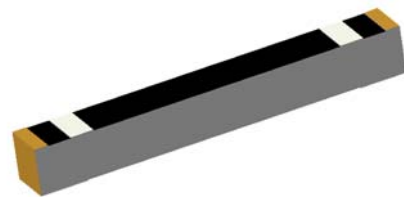
2.4GHz 8010 Chip Antenna: ANT8010R2400P1M1-认证专用 — 合康电子 —

Applications:

WLAN, 802.11b/g, Bluetooth, etc...

Features

SMD, high reliability, ultra compact, Omni-directional...



Part number

ANT 8010 R 2400 P1 M1
 (1) (2) (3) (4) (5) (6)

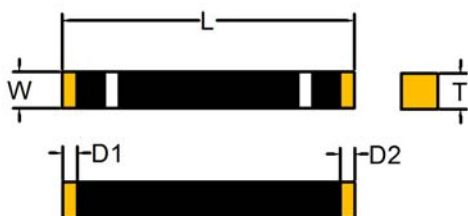
(1) Product Code	Chip Antenna
(1) Size Code	8.0x1.0mm
(2) Packing	Tape and reel
(3) Frequency	2.4GHz
(4) Series	P1
(5) Type	M1

Electrical Specification

Working Frequency Range	2400 ~2500 MHz
Peak Gain	1.5 dBi (Typ.)
Impedance	50 Ohm
VSWR	2.5 (Max)
Polarization	Linear
Azimuth Beamwidth	Omni-directional
Operation Temperature(°C)	-40~85

The specification is defined on EVB.

Dimension and Terminal Configuration



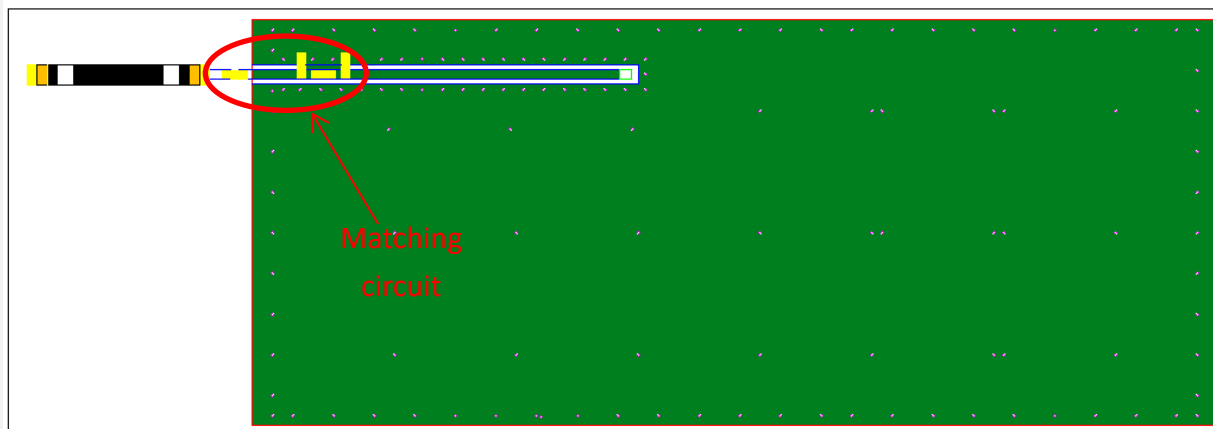
Dimension (mm)	
L	8.10±0.15
W	1.00±0.15
T	1.00±0.10
D1	0.40±0.15
D2	0.40±0.15

No.	Terminal Name
1	Feeding
2	Soldering

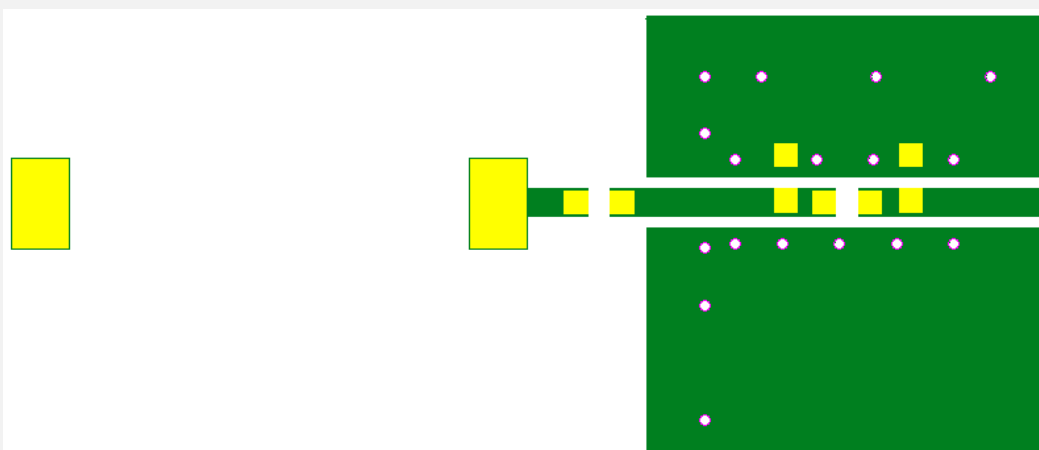
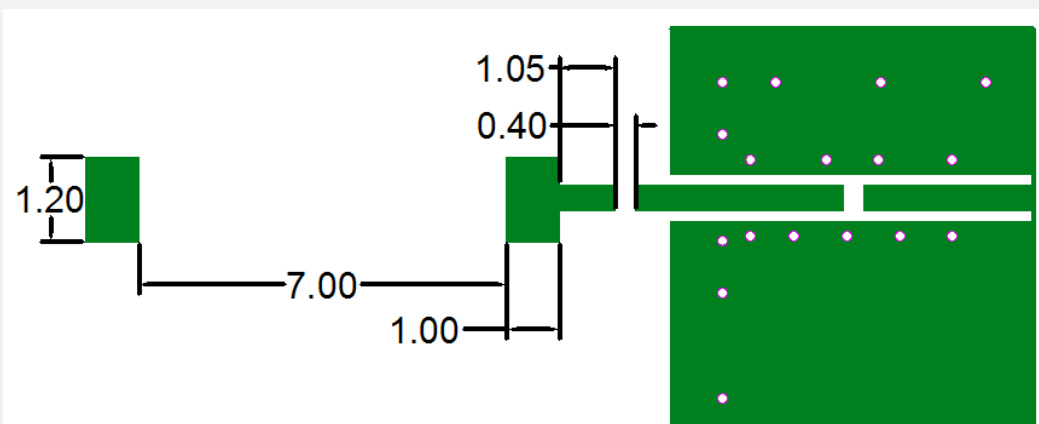
2.4GHz 8010 Chip Antenna: ANT8010R2400P1M1-认证专用

Evaluation Board Reference

PCB Dimension



Antenna Layout Reference



Unit : mm

: Chip Antenna

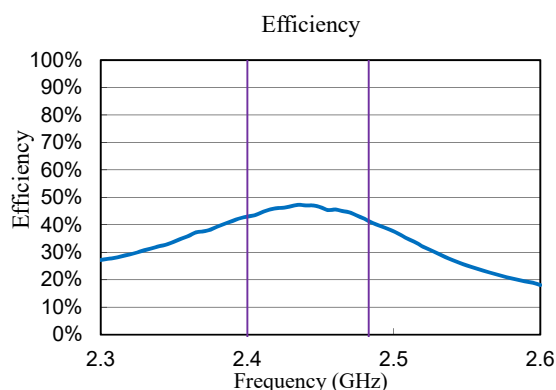
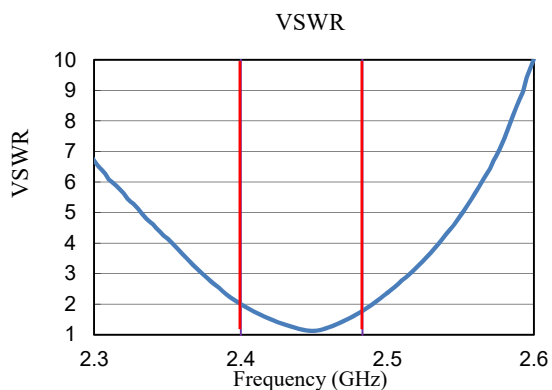
: Land Pattern

2.4GHz 8010 Chip Antenna: ANT8010R2400P1M1-认证专用 — 合康电子 —

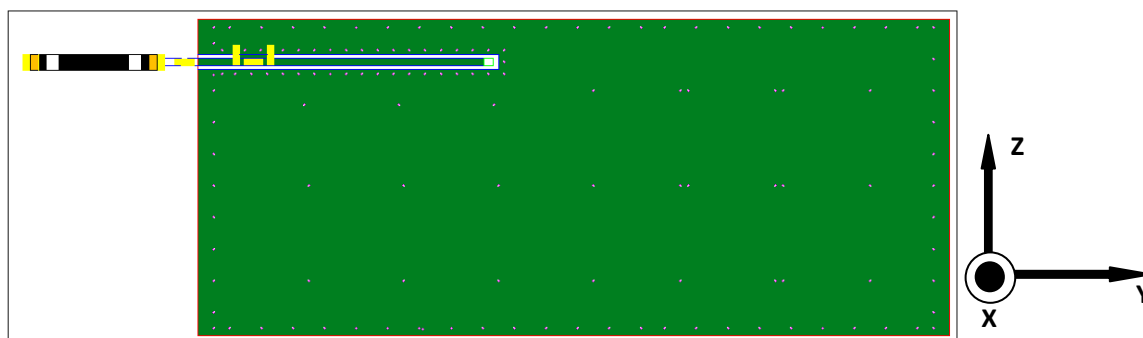
Electrical Characteristics

VSWR & Radiation

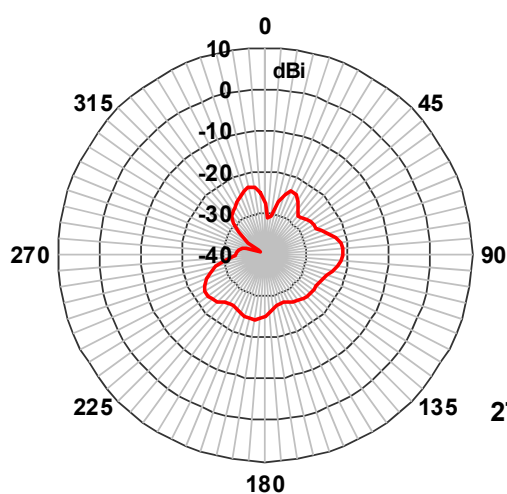
VSWR&Efficiency



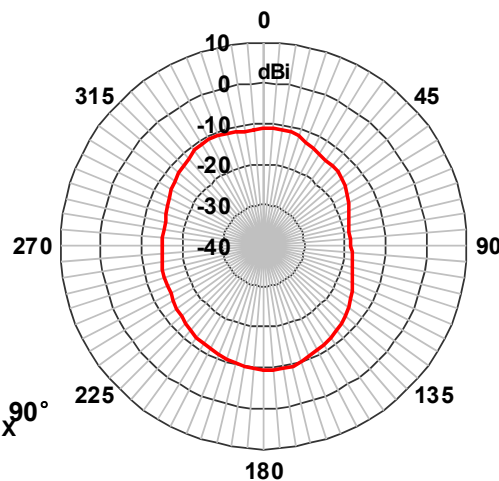
Radiation Pattern



ZX-Plane



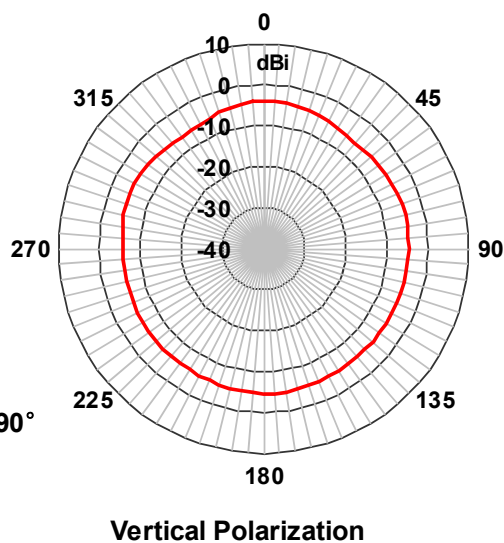
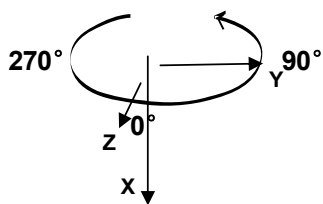
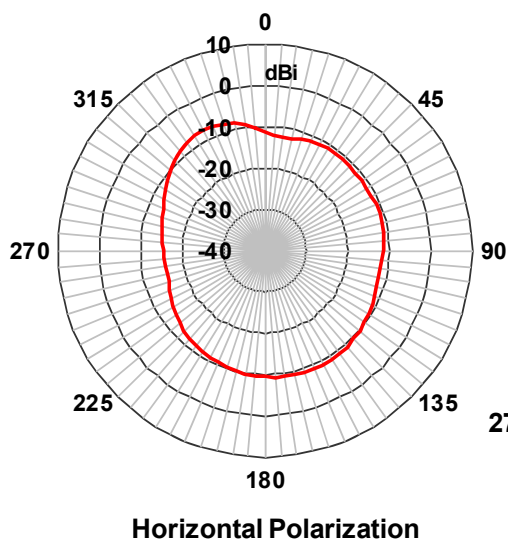
Horizontal Polarization



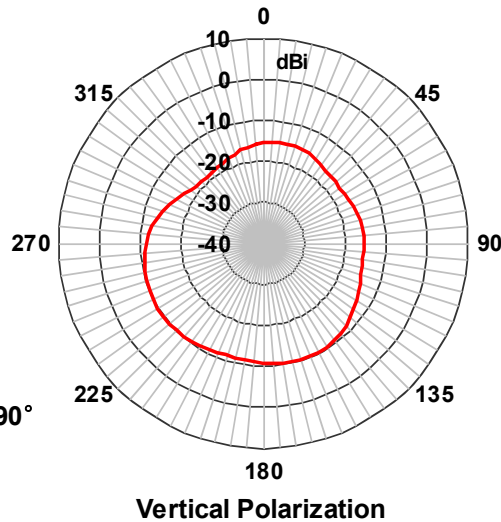
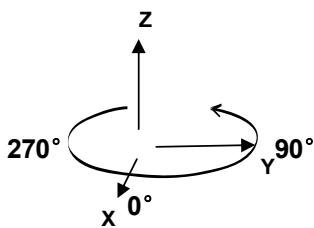
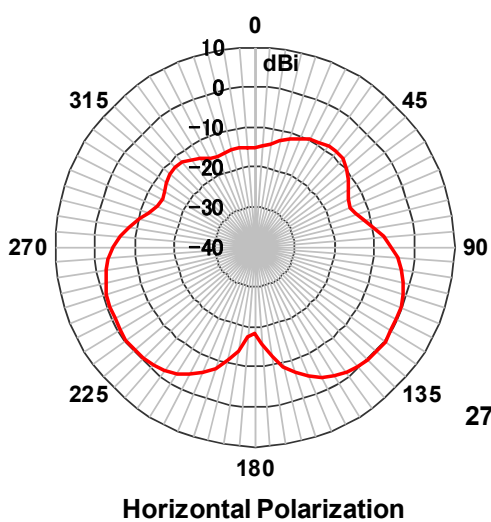
Vertical Polarization

2.4GHz 8010 Chip Antenna: ANT8010R2400P1M1-认证专用 — 合康电子 —

ZY-Plane



XY-Plane

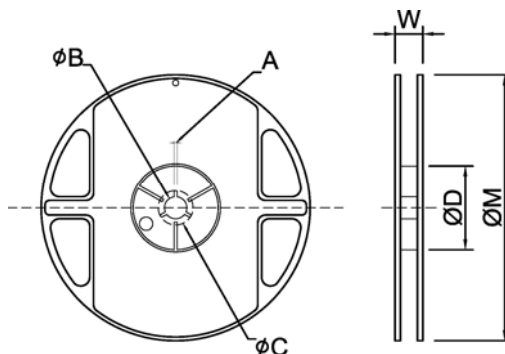


2.4GHz 8010 Chip Antenna: ANT8010R2400P1M1-认证专用 — 合康电子 —

Taping Specifications

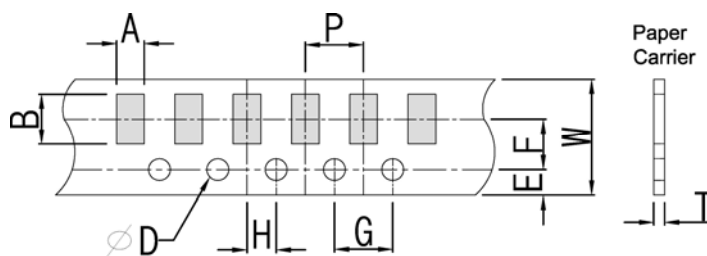
Reel and Taping Specification

Reel Specification



TYPE	SIZE		A	ϕB	ϕC	ϕD	W	ϕM
8010	7"	3K/Reel	5.5±0.5	13.5±1.0	16.5±1.0	55±1.0	18.5±2.0	178±2.0

Taping Specification

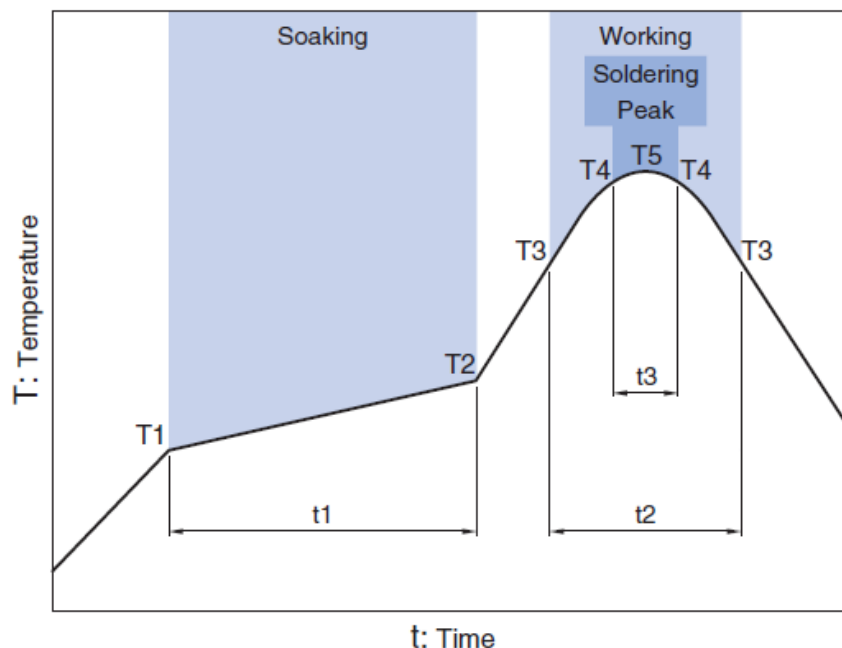


Packaging	Type	A	B	W	E	F	G	H	T	ϕD	P
Paper Type	8010	1.30±0.20	8.30±0.20	16.0±0.20	1.50±0.10	7.5±0.10	3.85±0.10	1.65±0.05	1.5±0.10	1.5±0.10	4.0±0.1

2.4GHz 8010 Chip Antenna: ANT8010R2400P1M1-认证专用 — 合康电子 —

Recommended Reflow Profile

Pb free solder



Soaking			Working		Soldering		Peak
Temp.		Time	Temp.	Time	Temp.	Time	Temp.
T1	T2	t1	T3	t2	T4	t3	T5
150°C	180°C	60 to 120sec	230°C	more than 30sec	247 to 253°C	within 10sec	260°C Max.

Revision History

Version	Date	Description
Ver.01	Apr.2023	New issue.

Apr. 2023 Ver.01