



深圳市凯普深通讯科技有限公司

Shenzhen cape deep communication technology co., LTD

Antenna test report

Client : AONI

Project name: B073

Radiation frequency : Hui Pang

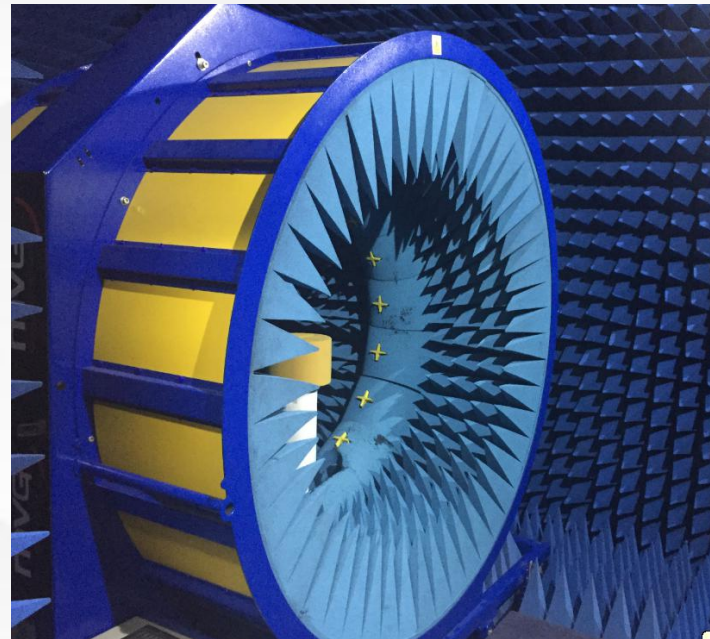
Day : 2021.10.09

Edition: 2



Laboratory test environment and equipment

凯普深



Test project	device under test
S11、S12、VSWR、LOSS	网络分析仪E5071B、E5062A
Efficiency、Gain 3D Radiation Pattern	Satimo SG16暗室、GP7*4*3暗室、E5071B
TRP、TIS	Satimo SG16暗室、GP7*4*3暗室、8960、 CMW500、MT8820C、E4438C、



凯普深

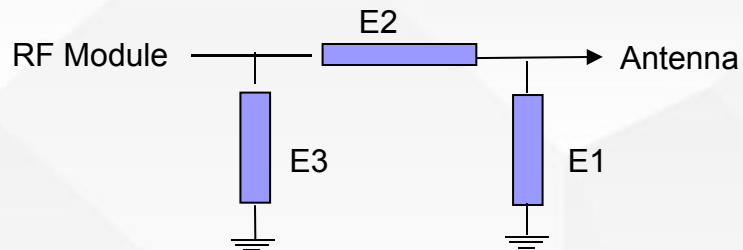
Introduction of project commissioning

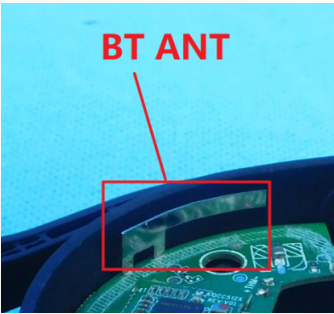
machine type	Bluetooth headset		
	Spectrum information	Antenna form	Match the change
Antenna type and frequency band information	antennae	2400-2480M	no
alternate material	Steel plate antenna		



凯普深

Antenna matching circuit



	Element	Value	appended drawings show
main antenna	E1(0201)		
	E2(0201)		
	E3(0201)		



凯普深

Active antenna test data

1#

Channel	TRP(dBm)	TIS(dBm)
0	5.3	-80.4
39	6.6	-82.3
78	7.2	-83.9

2#

Channel	TRP(dBm)	TIS(dBm)
0	5.6	-80.6
39	6.5	-82.2
78	7.4	-82.5



凯普深

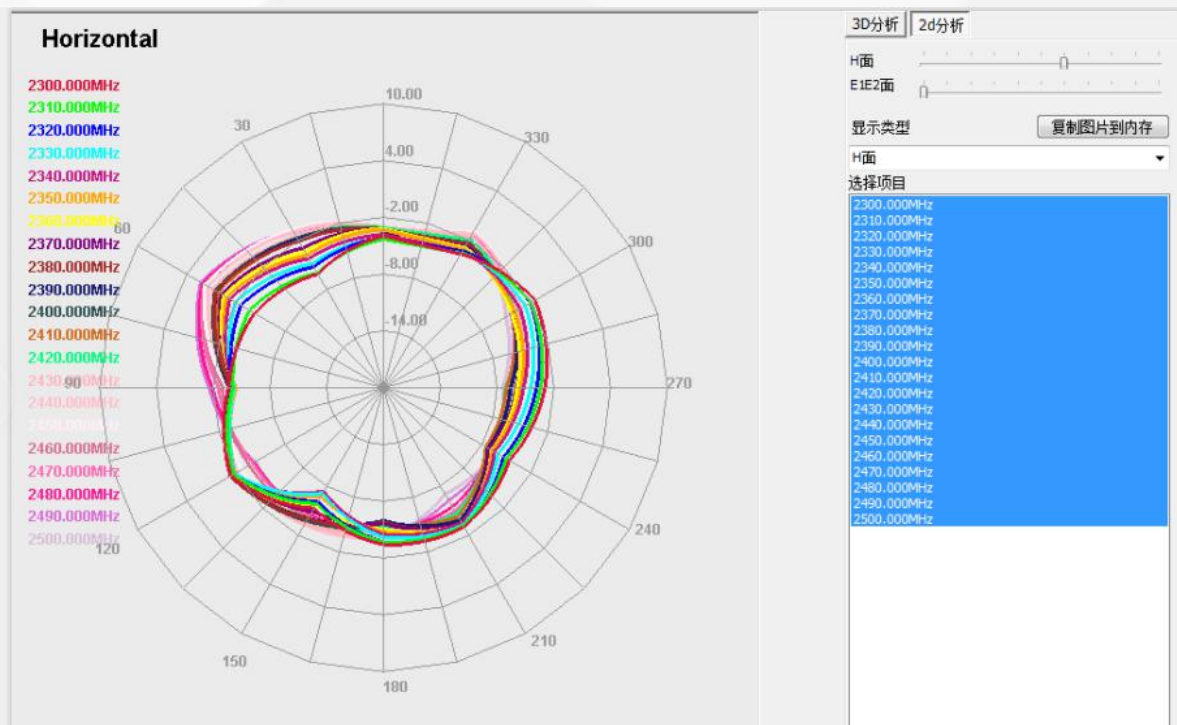
1#

Freq (MHz)	Effi (%)	Effi (dB)	Gain (dBi)
2400	56.68	-2.47	3.98
2410	55.05	-2.59	3.9
2420	58.51	-2.33	4.26
2430	58.53	-2.33	4.18
2440	59.2	-2.28	4.04
2450	60.96	-2.15	4.01
2460	61.82	-2.09	4.02
2470	62.09	-2.07	4.03
2480	66.7	-1.76	4.36
2490	64.36	-1.91	4.22
2500	64.71	-1.89	4.2

Passive antenna test data

2#

Freq (MHz)	Effi (%)	Effi (dB)	Gain (dBi)
2400	57.09	-2.43	3.99
2410	55.51	-2.56	3.88
2420	58.4	-2.34	4.14
2430	57.74	-2.39	4.01
2440	57.89	-2.37	3.83
2450	59.23	-2.27	3.83
2460	60.13	-2.21	3.69
2470	60.55	-2.18	3.83
2480	64.96	-1.87	4.24
2490	63.34	-1.98	4
2500	64.04	-1.94	4.05



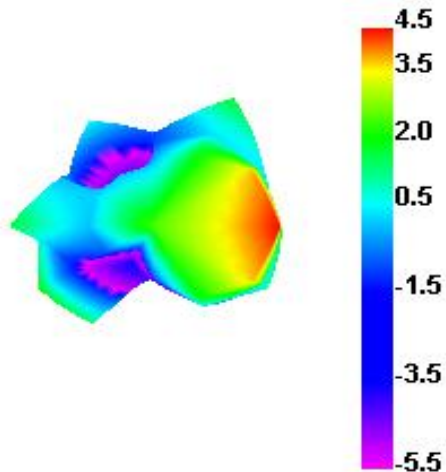


凯普深

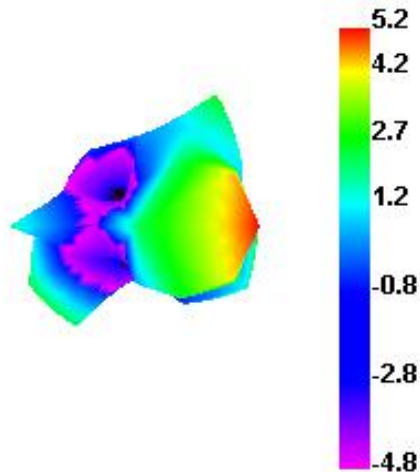
Passive antenna test pattern

1#

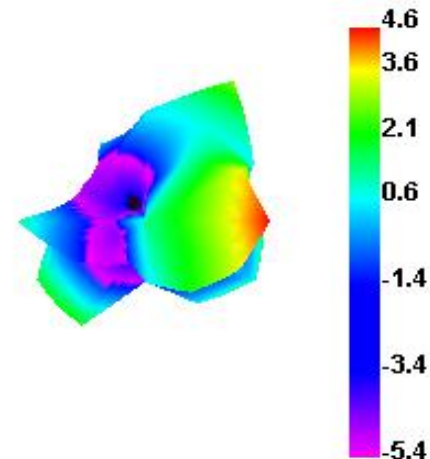
2400.000MHz



2450.000MHz



2500.000MHz

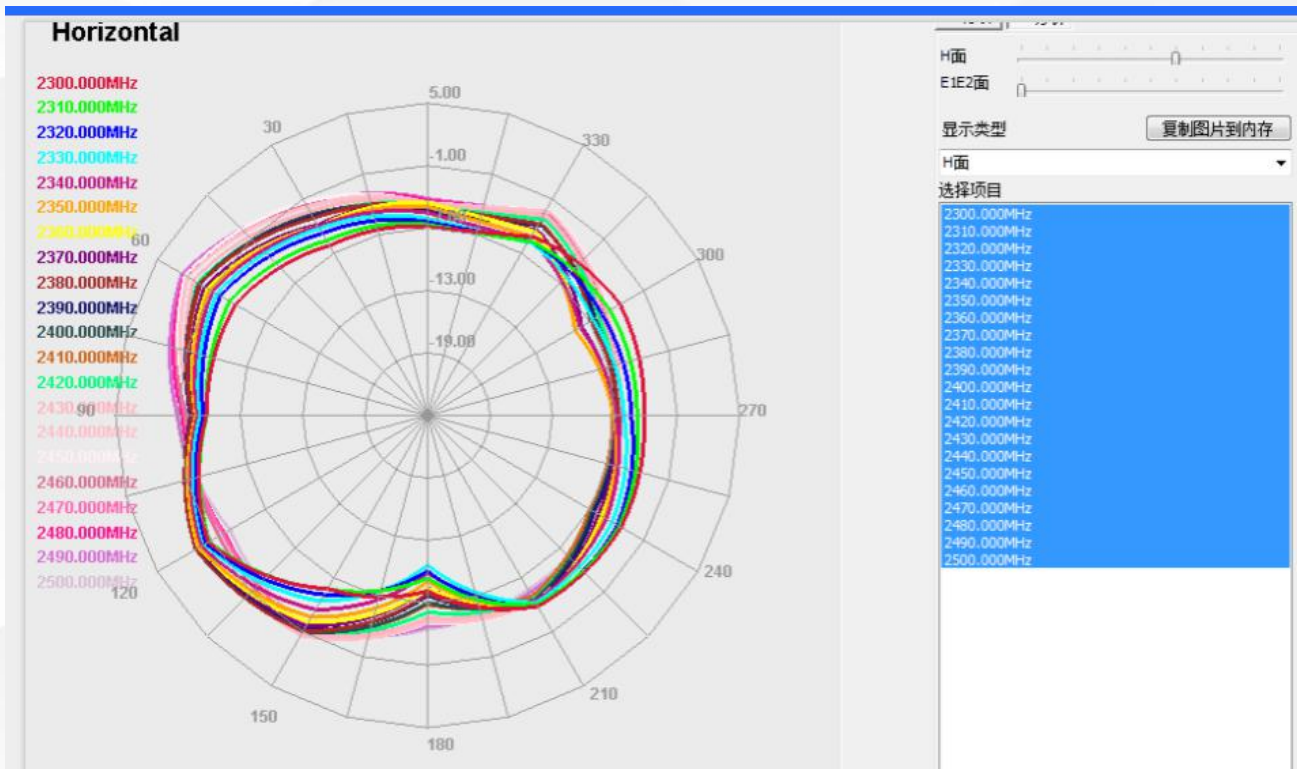




凯普深

Passive antenna test pattern

2#



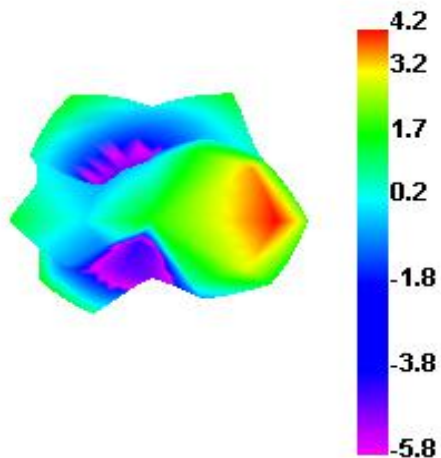


凯普深

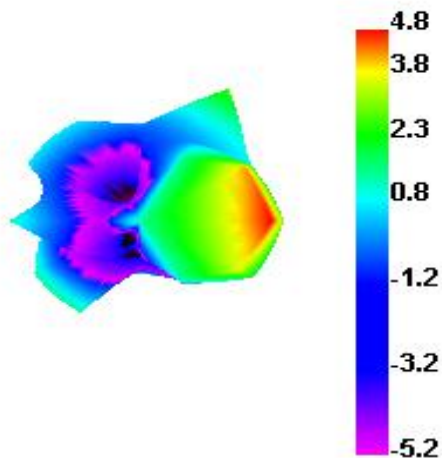
Passive antenna test pattern

2#

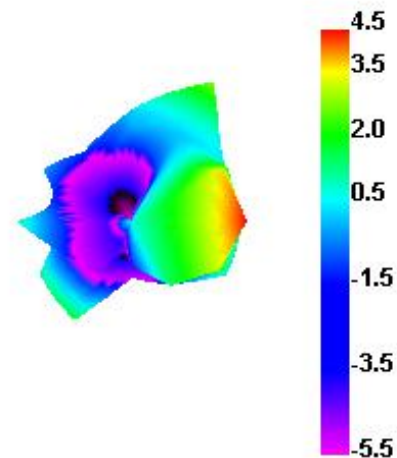
2400.000MHz



2450.000MHz



2500.000MHz





contact information

Radio frequency : Hui Pang

Phone : 13819148423

Address : Second floor, Yulong Office Building, Longcheng Industrial Zone, No. 440, Longguan Avenue, Longhua District