



# Highlight™

Find it, keep it, track it



Bluetooth® Tracker

## Download the Highlight™ App

On your smartphone, make sure that Bluetooth® and Location Services are turned on. These should be accessible via the settings on your iPhone or Android smartphone.

Download the app on your phone:

- Go to [randmcnally.com/Highlight-bt-app](http://randmcnally.com/Highlight-bt-app) or
- Search “Rand McNally Highlight” within the Google Play Store or the Apple App Store



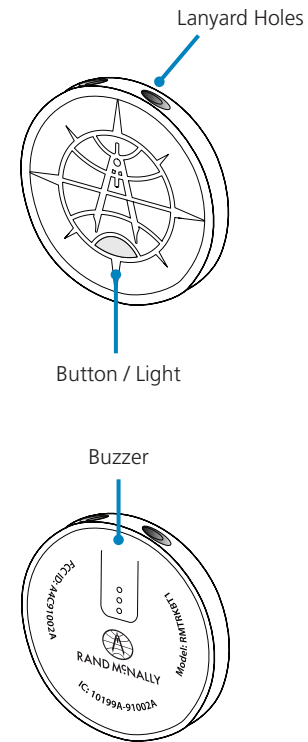
## Box Contents

1. Highlight™ Bluetooth® tracker(s)
2. Double-sided sticker(s)
3. Lanyard(s)
4. Quick Start Guide



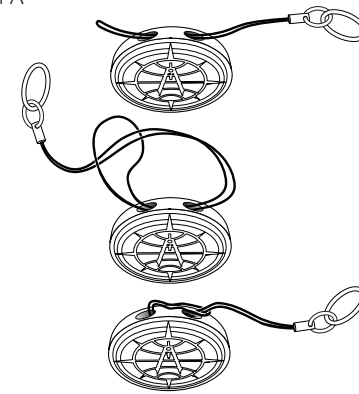
**NOTE:** Color and finish of the Highlight tracker shown in the illustration may differ from that of the included items.

## Your Highlight™



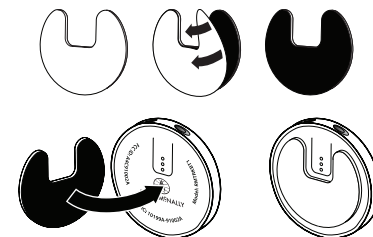
## Attaching or affixing your Highlight™

Option A



Option B

CAUTION: Do not block the buzzer holes



## Customer Support

800-333-0136

randmcnally.com/support



Highlight\_QSG\_110916\_v001

## Getting set up

**On first use, press the button to activate your Highlight™ Bluetooth® tracker.** Open the Highlight™ app and follow the on-screen instructions to add one or more Highlight™ trackers to your dashboard. Each Highlight™ tracker is fully configurable. Visit [randmcnally.com/Highlight](http://randmcnally.com/Highlight) to view detailed instructions regarding setup options.

## Locating an item

If a Highlight™ tracker is within Bluetooth® range, typically up to 100 feet with no barriers, you can “Find” it by clicking on the corresponding Highlight™ icon on the **My Highlights** dashboard, then clicking **Find**.

If your Highlight™ tracker is out of range, and your phone cannot connect to it, you can view its last known location. You also have the option to mark it as **Lost**.

Marking it as **Lost** opens up the possibility that someone in the user community might find and report the location of that Highlight™ tracker.

## Pause and Resume Tracking

If you know you won't be needing to keep track of a particular item, you can select **Pause** to turn off tracking. During this time, your application will not update the location for that item's Highlight™. If you would like to turn on tracking for the item, select **Resume**.

## Find your phone

When configuring your phone in the Highlight™ app, you can set it to play a certain ringtone when you are locating it using your Highlight™ tracker. Press the Highlight™ button twice and your phone will respond based on the Highlight™ settings.

## Receiving alerts when Highlight™ trackers go out of range

To receive alerts, look under **App Settings** to ensure that **Highlight™ Alerts** is enabled. Select the appropriate Highlight™ from the **My Highlights** dashboard. Tap the **Edit** button. Change the **Notify when out of range** setting to show the amount of time you want the app to wait to send an alert after the signal is lost. Selecting **Immediately** is recommended for high value items. Be aware that you will be notified even if the signal is lost momentarily. Choosing 5 minutes will send an alert if a connection is not detected for more than 5 minutes.

You can opt out of alerts when your Highlight™ trackers are out of range, i.e. a Bluetooth® connection is no longer detected.

Check [randmcnally.com/highlight](http://randmcnally.com/highlight) for more details including the latest version of this guide.

This transmitter must not be co-located or operated in conjunction with any other antenna or transmitter. Rand McNally follows a continuous review process and reserves the right to provide enhancements that may not be reflected in the pictures and specifications on this package. While the information contained herein is believed to be correct when compiled, Rand McNally does not guarantee its accuracy.

### FCC Compliance Statement

This device complies with part 15 of the FCC rules. Operation is subject to the following two conditions: (1) this device may not cause harmful interference, and (2) this device must accept any interference received, including interference that may cause undesired operation. This equipment has been tested and found to comply with the limits for a Class B digital device, pursuant to part 15 of the FCC rules. These limits are designed to provide reasonable protection against harmful interference in a residential installation. This equipment generates, uses, and can radiate radio frequency energy and may cause harmful interference to radio communications if not installed and used in accordance with the instructions. However, there is no guarantee that interference will not occur in a particular installation. If this equipment does cause harmful interference to radio or television reception, which can be determined by turning the equipment off and on, the user is encouraged to try to correct the interference by one of the following measures:

- Reorient or relocate the receiving antenna.
- Increase the separation between the equipment and the receiver.
- Connect the equipment into an outlet that is on a different circuit from the device.
- Consult the dealer or an experienced radio/TV technician for help.

### FCC Caution

Changes or modifications not expressly approved by the party responsible for compliance could void the user's authority to operate the equipment.

### IC Compliance Statement

This device complies with Part 15 of the FCC Rules and Industry Canada license-exempt RSS standard(s). Operation is subject to the following two conditions:

- This device may not cause interference, and
- This device must accept any interference, including interference that may cause undesired operation of the device.

This Class B digital apparatus complies with Canadian ICES-003.

### IC Caution

Intentional or unintentional changes or modifications to the equipment not expressly approved by Rand McNally could void the user's authority to operate the equipment.

### IC attestation de conformité

Ce dispositif est conforme à la norme FCC Partie 15 et aux norme(s) RSS permis-exempte(s) d'Industrie Canada. L'opération est soumise aux deux conditions suivantes:

1. Ce dispositif ne peut pas provoquer d'interférence nocive et
2. Ce dispositif doit accepter toute interférence reçue, y compris les interférences qui peuvent causer un mauvais fonctionnement du dispositif.

Cet appareil numérique de la classe B est conforme à la norme NMB-003 du Canada.

### Attention

Les changements ou modifications à l'équipement, que ce soient intentionnelles ou non, non expressément approuvés par Rand McNally pourraient annuler l'autorisation de l'utilisateur à utiliser cet équipement.

This equipment complies with FCC radiation exposure limits set forth for an uncontrolled environment and meets the FCC radio frequency (RF) Exposure Guidelines. This equipment has very low levels of RF energy that is deemed to comply without testing of specific absorption rate(SAR).

This device complies with Industry Canada's licence-exempt RSSs. Operation is subject to the following two conditions:(1) This device may not cause interference; and(2) This device must accept any interference, including interference that may cause undesired operation of the device.

"Le présent appareil est conforme aux CNR d'Industrie Canada applicables aux appareils radio exempts de licence.L'exploitation est autorisée aux deux conditions suivantes :1) l'appareil ne doit pas produire de brouillage;2) l'utilisateur de l'appareil doit accepter tout brouillage radioélectrique subi, même si le brouillage est susceptible d'en compromettre le fonctionnement."

This equipment complies with IC radiation exposure limits set forth for an uncontrolled environment and meetsRSS-102 of the IC radio frequency (RF) Exposure rules. This equipment has very low levels of RF energy that is deemed to comply without testing of specific absorption rate (SAR).

Cet équipement est conforme aux limites d'exposition aux rayonnements énoncées pour un environnement noncontrôlé et respecte les règles d'exposition aux fréquences radioélectriques (RF) CNR-102 de l'IC. Cet équipementémet une énergie RF très faible qui est considérée comme conforme sans évaluation du débit d'absorption spécifique (DAS)."

### Warranty

Rand McNally warrants Highlight-BT trackers will be free of defects in workmanship and materials for a period of one (1) year from the date of first consumer purchase. This warranty may be enforced by the first consumer purchaser ("Customer"), provided that the product is utilized within the U.S.A. or Canada.

During the warranty term, Rand McNally will, without charge, repair or replace (with a new or newly reconditioned unit), as its option, defective Highlight-BT trackers. For repair or replacement of defective Highlight-BT trackers, Customer may visit [www.randmcnally.com/rma](http://www.randmcnally.com/rma) or contact 1-877-446-4863 for return authorization and instructions. Customer will be required to provide proof of the date of its first consumer purchase by providing a copy of the original sales receipt for the warranty to be valid. The Customer must pay any initial shipping charges required to ship the Highlight-BT tracker to Rand McNally for warranty service, but the return charges will be at Rand McNally's expense, if the product is found to be defective and is repaired or replaced under the terms of this warranty.

If the product is still under warranty, then following repair or replacement, the new warranty is 90 days or to the end of the original one (1) year warranty, whichever is longer. If the Product is out of warranty, Rand McNally shall have no obligation to repair or replace the Product, but if it does choose to repair or replace the Product, such repair or replacement shall be at Customer's expense, applying Rand McNally's then-current cost to repair. In such case, customer shall be responsible for all shipping charges associated with the shipment of the Product to Rand McNally and its return to the customer.

This warranty gives the Customer specific rights. Other rights may be available to Customer which vary from state to state.

This limited warranty does NOT apply: 1) to any product damaged by accident; 2) in the event of misuse or abuse of the product or as a result of unauthorized alterations or repairs; or 3) if the owner of the product resides outside of the U.S.A. or Canada.

CAUTION: RAND MCNALLY DISCLAIMS ANY AND ALL EXPRESS, IMPLIED OR STATUTORY WARRANTIES, INCLUDING ANY IMPLIED WARRANTIES OF MERCHANTABILITY OR FITNESS FOR A PARTICULAR PURPOSE, AND ANY WARRANTIES AS TO QUALITY, PERFORMANCE, TITLE AND/OR NON-INFRINGEMENT. SOME STATES DO NOT ALLOW LIMITATIONS ON HOW LONG AN IMPLIED WARRANTY LASTS AND/OR DO NOT ALLOW THE EXCLUSION OR LIMITATION OF INCIDENTAL OR CONSEQUENTIAL DAMAGES, SO THE ABOVE LIMITATIONS MAY NOT APPLY TO SOME CONSUMERS.

IN NO EVENT WILL RAND MCNALLY BE LIABLE FOR ANY INDIRECT, SPECIAL, INCIDENTAL, OR CONSEQUENTIAL DAMAGES ARISING OUT OF THE USE OR INABILITY TO USE THE PRODUCT, EVEN IF ADVISED OF THE POSSIBILITY OF SUCH DAMAGES.