

RAND McNALLY®

# Randtab 7

## Quick Start Guide

### Support

Find the full User Manual and more at  
[randmcnally.com/support](http://randmcnally.com/support)  
877-446-4863



## Your Randtab 7



## Box Contents

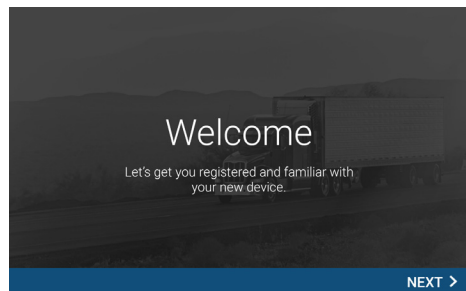
- 1 10-inch truck navigation device with camera
- 2 Powered magnetic mount connector

### Three mounts:

- 3 Screw down mount
- 4 Suction Cup Mount
- 5 Ball mount bracket
- 6 Removable guard
- 7 Vehicle charger (5V/5A)
- 8 USB-C cable
- 9 Anti-glare screen protector
- 10 Quick Start Guide



## Getting Started



2

### Powering Up

Charge the device before using it on battery power.

**Note:** GPS navigation will work right out of the box even if you do not have internet access.

### Connecting to Wi-Fi

When you first turn on your tablet, you'll be asked to select a Wi-Fi network to connect to the internet. A Wi-Fi connection is required to browse the web, download apps, and use internet-enabled features such as weather and traffic. Choose your wireless access point or hotspot from the list and type in your password. You can come back to this step later if you are in a place without internet access.

**Warning:** When using the magnetic mount in your vehicle, only use the mount's DC IN port for charging. Do not attempt to simultaneously charge the tablet from the magnetic mount and the tablet's USB port.

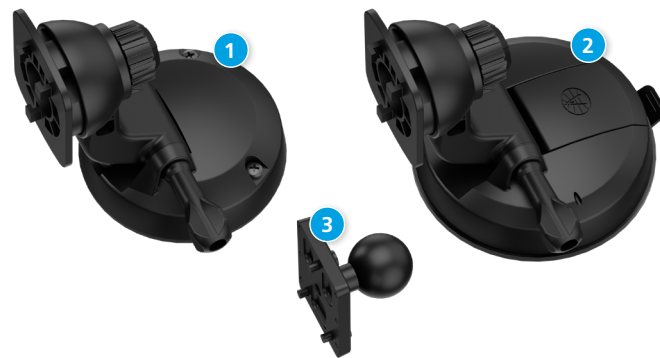
### Registration

In the next step, you'll be prompted to register your tablet with Rand McNally. Your registration ensures that you have access to the latest information and updates, as well as Customer Support.

## Mounting Options

We have provided three mounting options so that you can put the navigation device in the safest, most convenient part of your vehicle:

- 1 Screw down mount (typically installed on dashboard)
- 2 Suction cup mount (installed on flat surfaces like windshields)
- 3 Ball mount bracket for use with third-party mounts



3

## Mounting the Randtab 7

### Option 1: Screw Down Mount

#### Notes:

- Rand McNally recommends professional installation for this mounting option and is not responsible for any damages or consequences arising from the installation.
  - Avoid gauges, HVAC, air bags, air bag covers and other items when drilling holes and attaching the mount to the vehicle.
  - You need to furnish your own screws.
  - This mount also includes an adhesive option.
1. Select an area with a line of sight to the sky and GPS satellites.
  2. Clean and dry the mounting area.
  3. Using the mount as a template, mark the three screw locations.
  4. Drill pilot holes (optional).
  5. Secure the mount in place with screws that you furnish.
  6. Adjust the angle of the mount.
  7. Plug the power cord into the mount and the vehicle's 12-volt power source.
  8. Snap the tablet onto the mount (using built-in magnet).



## Mounting the Randtab 7

### Option 2: Suction Cup Mount

**Note:** Follow all local regulations governing the placement of the mount.

1. Select an area with a line of sight to the sky and GPS satellites.
2. Clean and dry the mounting area.
3. Remove the suction cup protective film.
4. Adjust the angle of the mount.
5. Pull the suction cup lever up to release suction.
6. Plug the power cord into the mount and the vehicle's 12-volt power source.
7. Place and hold the mount suction cup against the mounting surface.
8. Press the suction cup lever down until it snaps into place.
9. Snap the tablet onto the mount (using built-in magnet).



## Mounting the Randtab 7

---

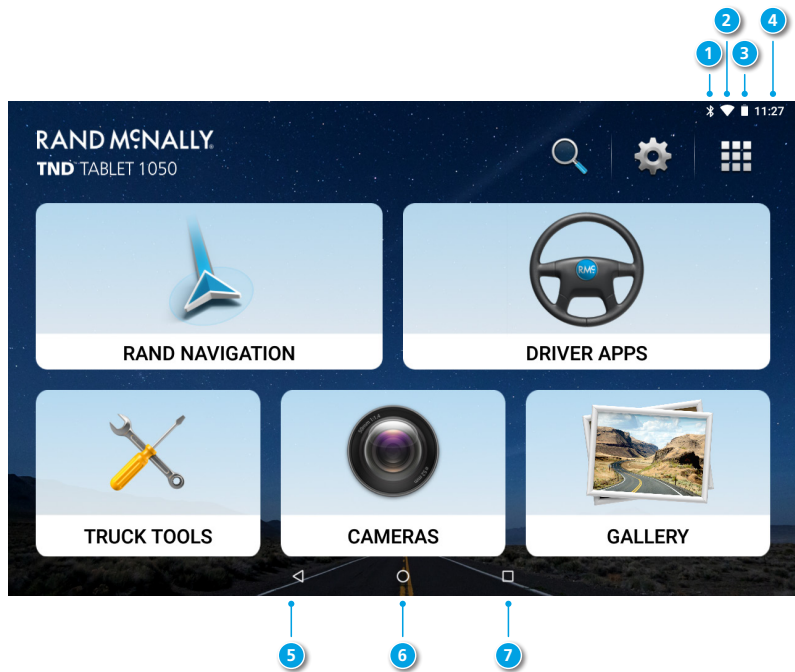
### Option 3: Ball Mount Bracket

The 1050 includes a ball mount that is compatible with third party mounting solutions.

1. Secure the ball mount to the magnetic mount using the screws included in the package. Note that the screws in the package might look slightly different than the screws in these images.
2. Snap the tablet on the mount (using built-in magnet).



## Android User Interface



## Android User Interface

- 1 Bluetooth®
- 2 Wi-Fi
- 3 Battery Meter and Charging Indicator
- 4 Current Time
- 5 Back
- 6 Return to Home Screen
- 7 View Open Apps

**Note:** You can swipe down from the top of the screen to view the Android quick settings menu.

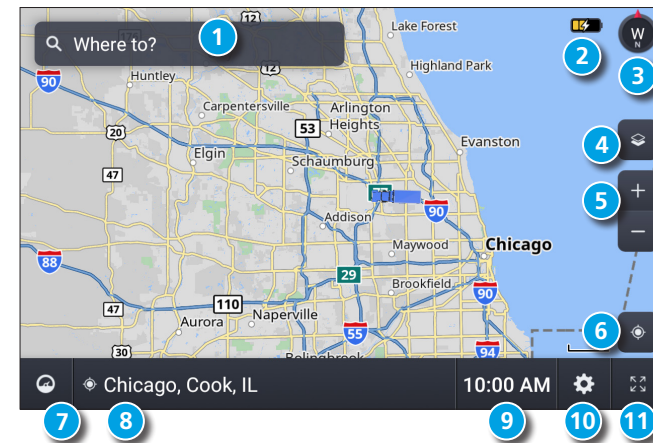
## Main Menu

- 1 Rand Navigation
- 2 Driver Apps (HOS/ELD)
- 3 Truck Tools
- 4 Cameras
- 5 Gallery
- 6 Guided Search
- 7 Settings
- 8 App Tray




## Rand Navigation

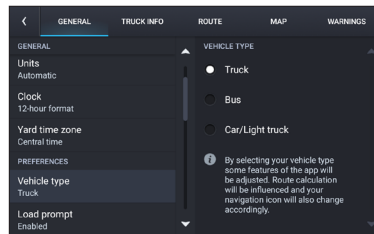
- 1 Route to a location.
- 2 Battery power status and charging indicator.
- 3 Select map view mode: Heading up, North up or 3D view.
- 4 Wi-Fi connected services.
- 5 Zoom in/out.
- 6 Return to current location.
- 7 Virtual dashboard.
- 8 Current street name, upcoming intersection, or current location.
- 9 Local time and Elevation.
- 10 Navigation Settings: General, Truck Info, Route, Map and Warnings.
- 11 Hide/display screen information and controls.



## Rand Navigation > Preferences


1. Tap **Settings**.
2. Tap the **General, Route** or **Map** tab.
3. Scroll to view options.
4. Tap the option to be changed.
5. Enter new settings.
6. Tap  to save changes.

On the left,  
tap on an  
option

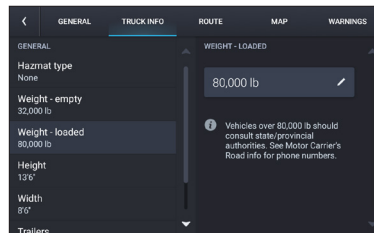


On the right,  
enter  
settings  
for the  
option

## Rand Navigation > Truck Info and Warnings

1. Tap **Settings**.
2. Tap **Truck Info** or **Warnings** tab.
3. Scroll to view options.
4. Tap the option to be changed.
5. Enter new settings.
6. Tap  to save changes.

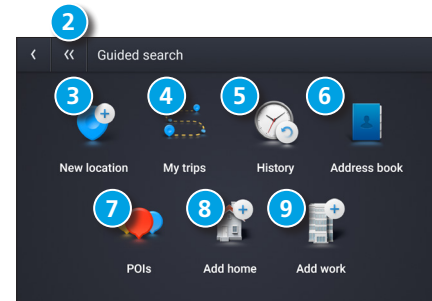
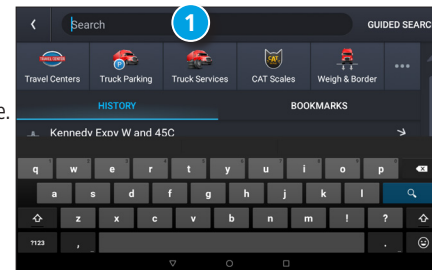
On the left,  
tap on an  
option



On the right,  
enter  
settings  
for the  
option

## Rand Navigation > Destination

1. Route to a searched location.  
Tips:
  - Search for addresses, streets, cities and points of interest.
  - Address searches should include either a city or postal code.
  - Avoid using punctuations.
  - Avoid using street prefixes and suffixes.
2. Go to Map.
3. Route to a New location.
4. Plan a multi-stop trip or record a trail.
5. Return to a previous location.
6. Access the Address book.
7. Route to a Point of Interest (POI).
8. Add Home location.
9. Add Work location.



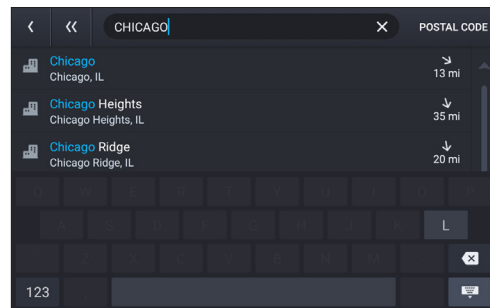
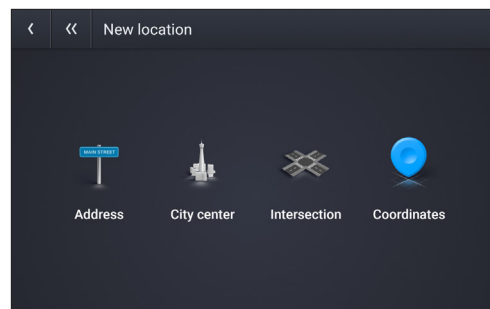


## Rand Navigation > New Location

1. Tap **Where to? > Guided Search > New location.**
2. Tap **Address.**
3. Enter the name of the city. (**Note:** As you type, the keyboard only displays the next possible letter.)
4. Results appear in the list. Tap the city to select.
5. Enter the street name. Tap the street name to select.
6. Enter the house number. Tap the address to select.

### Tips

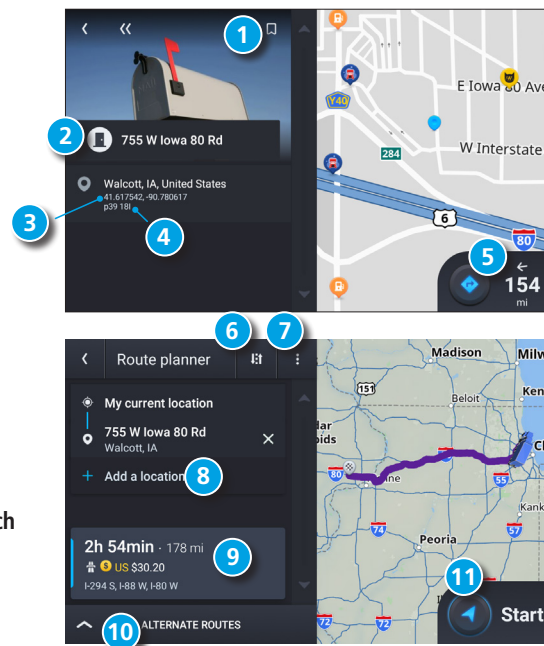
- You can also route to a new location by **City center**, **Intersection**, **Coordinates**, or choose **Address > Postal Code.**
- View recent destinations by tapping **Where to? > Guided Search > History.**
- View recent cities by tapping **Where to? > Guided Search > New location > Address.**
- View saved locations by tapping **Where to? > Guided Search > Address book > Bookmarks.**
- View saved trips by tapping **Where to? > Guided Search > My trips.**



## Rand Navigation > Confirm Destination Windows

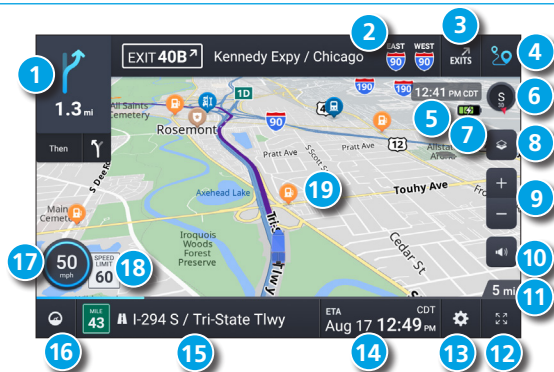
1. Create bookmark.
2. Destination address.
3. Coordinates.
4. Cross reference to page number in printed Rand McNally *Motor Carriers' Road Atlas.*
5. Begin route to destination.
6. Reorder locations.
7. Modify Route avoids, review Route details, Overview and Save to My trips.
8. Add a location.
9. Review route details.
10. Review alternate route(s) and choose one.
11. Start route.

\*To manage via points, Tap **Where to? > Guided Search > My trips > Multi-stop trips.** You can add up to 25 destinations in a multi-stop trip.



## Rand Navigation > Route Map Window

- Next Maneuver:** Instructions for your next maneuver.
- Road Name:** Next maneuver street name or highway sign.
- Exits:** Check upcoming exits for food, gas, hotels and other places.
- Route Options:** Tap to display additional options, including adding a stop, detours, and ending navigation.
- Current time and time zone**
- Map View Mode:** Tap to switch the map view: 3D map, North up, or Heading up.
- Battery power status and charging indicator**
- Wi-Fi Connected Services:** Tap to enable fuel prices, weather and traffic on the map.  
**Note:** These options require a Wi-Fi connection.
- Zoom In/Zoom Out**
- Announcements**



- Distance remaining to your destination:** Displays a progress bar indicating the distance remaining to your destination.
- Expanded Map Display:** Tap to remove additional options from the map screen.
- Settings:** Tap to open the Navigation Settings screens.

## Rand Navigation > Junction View

When on a route, Junction View displays when you have an upcoming maneuver. Once past the maneuver, Junction View closes and the previous window displays.

- ETA/Time/Distance:** Tap to toggle between displaying ETA, Yard ETA, Remaining Time, Yard Time, and Elevation.
- Location View:** Tap to toggle between displaying the current location by city, street name, or next cross street.
- Virtual Dashboard:** Tap to view information about your current location, route, trips, and more.
- Current Speed:** Displays your current speed and turns red for speed warnings.
- Speed Limit:** Posted speed limit for your vehicle setting. Tap to open a screen to submit a speed limit correction.
- Map:** Displays the map, your current route, and your vehicle's current location.

- Signs to follow for the next maneuver.
- Distance to the upcoming maneuver. Distance decreases as you approach.
- Lane assist arrows.
- Dismiss Junction View.



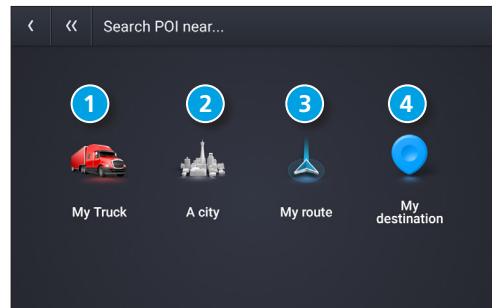
## Rand Navigation > Points of Interest (POIs)

With an active route, tap

**Route Options > Search / Add a Stop > Guided Search > POIs.**

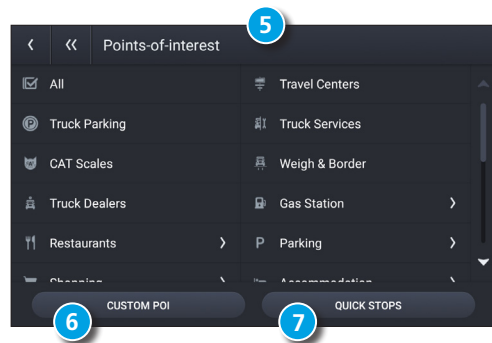
Search for a POI:

- 1 Near your truck.
- 2 In a particular city.
- 3 Along your route.
- 4 Near your destination.



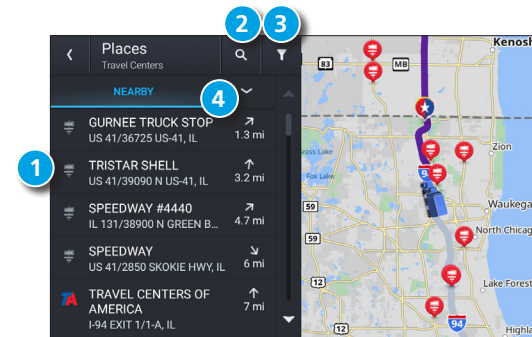
POI Categories:

- 5 Select a category.
- 6 Search your custom POIs.
- 7 Find popular truck-friendly POIs.



## Rand Navigation > POIs - continued

- 1 Tap location to select.
- 2 Search by name.
- 3 Search by available services.
- 4 Search Nearby, near My destination or Along route.



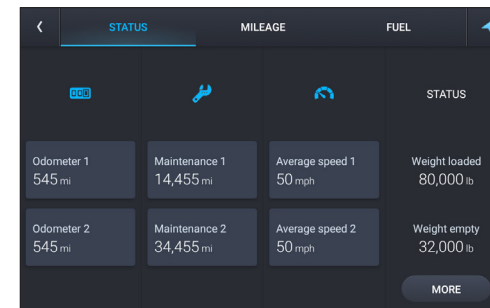
## Rand Navigation > Virtual Dashboard

- 1 Current location.
- 2 Current times at the yard, current location and destination, as well as estimated time of arrival.
- 3 Sunrise and sunset times based on vehicle location (latitude/longitude) and time of day.
- 4 Current speed (above) and posted speed limit (below).  
**Note:** Turns red when speed limit warning exceeded.
- 5 Elevation at current location.
- 6 Current leg progress.
- 7 Information for up to three trips. Includes odometer, time and speed information.
- 8 Nearest cross street.
- 9 Current day and date at your location.
- 10 Battery power status and charging indicator
- 11 Return to the route map.
- 12 Add fuel purchase information.
- 13 Distance to next maneuver.

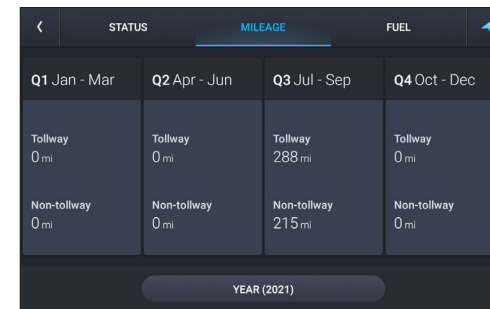


## Rand Navigation > Status and Mileage

1. Tap **Truck Tools > Status, Mileage & Fuel**.
2. Tap the **Status** tab to view timers, odometer readings and average speed.
3. Tap on a field to change or reset the number.



4. Tap the **Mileage** tab to view a list of mileage logs by quarter.
5. Tap on a quarter to view its logs.




## Rand Navigation > Fuel


1. Tap **Truck Tools > Status, Mileage & Fuel**.
2. Tap the **Fuel** tab to view a list of fuel logs by quarter.
3. Tap on a quarter to view its logs.
4. Tap **Add Fuel** to record the date, location and cost of a fuel purchase.
5. Tap on a field to make changes.
6. Tap **Save**.

Add fuel log		SAVE	
Date 08/17/2021		Taxable ✓	
Fuel quantity 146,740 gal	Fuel price \$2.970 /gal	Total cost \$435.82	Location Lake Forest
Station I-294	Last odometer 28,555 mi	Current odometer 29,508 mi	
Distance 953 mi	Current economy 6.5 mpg	Average economy 6.5 mpg	

## Rand Navigation > Fuel Prices, Weather and Traffic

**Note:** These features require a Wi-Fi connection. To access fuel prices, weather and traffic, tap the Wi-Fi connected services button .

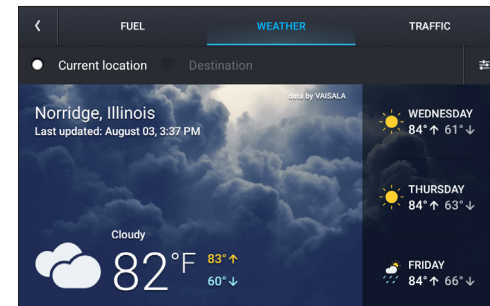
Enable the appropriate slider  to view fuel prices, weather and traffic on the map.

Tap the Wi-Fi connection settings button  to view details and settings for fuel, weather and traffic.

Tap the Fuel tab to view, sort and filter a list of prices, as well as modify preferences.

Tap the Weather tab to view weather conditions and modify weather layer preferences.

Tap the Traffic tab to view a traffic flow and incident list.



## Warnings, End-User License Agreement, and Warranty

**Pay attention to road conditions and street signs, and obey all traffic and safety laws.** Traffic laws and current traffic conditions must always be observed and take precedence over the instructions issued by the TND™ product navigation system. The User should be aware of situations where current traffic conditions and the instructions from the navigation system may be in conflict. Some states prohibit the use of windshield mounts and may otherwise restrict the usage of navigation and other electronic devices in the vehicle. It is the User's responsibility to ensure compliance with all laws and regulations. The use of the navigation system does not relieve the User of his/her responsibilities. The User is ultimately responsible for the vehicle under his/her control and should be aware of the surroundings at all times.

If after reading these statements the User decides not to accept these terms, the User should not use the TND™ product.

Rand McNally hereby grants you ("User") a single-user non-exclusive, non-transferable license to use the Rand McNally IntelliRoute® TND™ trucking navigation product (hereinafter referred to as the "TND™ product" (including software and associated data)) for User's own internal business or personal use and not for resale, sublicense or commercial use.

This TND™ product and the software incorporated in it and related documentation are furnished under license and may be used only in accordance with this license. Except as permitted by such license, the contents of this TND™ product and software may not be disclosed to third parties, copied or duplicated in any form, in whole or in part, without the prior written permission of Rand McNally. This TND™ product and software contain proprietary and confidential information of Rand McNally and its licensors. Rand McNally grants User a limited license for use of this TND™ product and the software incorporated in the TND™ product for its normal operation. By using the TND™ product, User acknowledges that the content of this document and the TND™ product are the property of Rand McNally and its licensors and are protected by U.S. copyright, trademark and patent laws and international treaties.

THE USER MAY NOT:

- Use the TND™ product on a network or file server, time-sharing or to process data for other persons.
- Use the TND™ product to create any routing tables, files, databases or other compendiums.
- Copy, loan or otherwise transfer or sublicense the TND™ product, its software or content.
- Modify, or adapt the TND™ product in any way, or decompile, disassemble, reverse engineer or reduce to human readable form the TND™ product and software incorporated therein.
- Alter, remove or obscure any copyright notice, trademark notice, or proprietary legend from the TND™ product, its software or content.

This license will terminate automatically if User fails to comply with any of the terms of this license and User agrees to stop using the TND™ product. Rand McNally may revise or update the TND™ product and is not obligated to furnish any revisions or updates to User.

RM Acquisition, LLC d/b/a Rand McNally warrants that the TND™ product, and the component parts thereof, will be free of defects in workmanship and materials for a period of one (1) year from the date of first use as determined by contact with GPS satellites. This warranty may be enforced by the first consumer purchaser ("Customer"), provided that the product is utilized within the U.S.A. or Canada.

Rand McNally will, without charge, repair or replace (with a new or newly reconditioned unit), at its option, defective TND™ products or component parts. For repair or replacement of defective TND™ products, Customer must contact Rand McNally at 877-446-4863 for return authorization and instructions. Customer will be required to provide proof of date of first Customer purchase by providing a copy of the original sales receipt, if the device is not registered in our system or the device shows registered to another customer, in order for the warranty to be valid. The customer will not be responsible for shipping charges to or from Rand McNally as long as the warranty is valid, if the product is repaired or replaced under warranty.

Repairs or replacements have a 90-day warranty. If the product sent in is still under its original warranty, then the new warranty is 90 days or to the end of the original one (1) year warranty, depending on which is longer.

This warranty gives the Customer specific rights. Other rights may be available to Customer which vary from state to state.

**Exclusions:** This limited warranty does not apply: 1) to any product damaged by accident; 2) in the event of misuse or abuse of the product or as a result of unauthorized alterations or repairs; 3) if the serial number has been altered, defaced or removed; or 4) if the owner of the product resides outside of the U.S.A. or Canada.

**Caution: Rand McNally makes no warranty as to the accuracy of completeness of the information in the TND™ product and disclaims any and all express, implied or statutory warranties, including any implied warranty of merchantability or fitness for a particular purpose. It is the user's responsibility to use this product prudently. This product is intended to be used only as a travel aid and must not be used for any purpose requiring precise measurement of direction, distance, location or topography.**

RAND McNALLY AND ITS LICENSORS DO NOT MAKE ANY OTHER WARRANTY OR REPRESENTATION, EITHER EXPRESS OR IMPLIED, WITH RESPECT TO THE TND™ PRODUCT, INCLUDING ANY WARRANTY AS TO QUALITY, PERFORMANCE, TITLE OR NON- INFRINGEMENT. IN NO EVENT WILL RAND McNALLY OR ITS LICENSORS BE LIABLE FOR ANY INDIRECT, SPECIAL, INCIDENTAL, OR CONSEQUENTIAL DAMAGES ARISING OUT OF THE USE OR INABILITY TO USE THE TND™ PRODUCT, EVEN IF ADVISED OF THE POSSIBILITY OF SUCH DAMAGES.

Some states do not allow limitations on how long an implied warranty lasts and/or do not allow the exclusion or limitation of incidental or consequential damages, so the above limitations may not apply to some consumers.

The User agrees to allow User-provided information to Rand McNally to be used for internal business evaluation purposes, including, but not limited to, evaluating the effectiveness of the services provided, methods to simplify or improve User experiences. Such information will not be used by third parties or in any way that discloses the identity of the User.

Rand McNally may make use of third party software in the TND™ product. Notwithstanding the terms and conditions of this license, use of some third party materials included in the TND™ product may be subject to other terms and conditions. The official third party copyright notices are provided at the end of this License.

The User agrees to indemnify, defend and hold Rand McNally and its licensors (including their respective licensors, suppliers, assignees, subsidiaries, affiliated companies, and the respective officers, directors, employees, shareholders, agents and representatives of each of them) free and harmless from and against any liability, loss, injury (including injuries resulting in death), demand, action, cost, expense or claim of any kind or character, including but not limited to attorney's fees, arising out of or in connection with any use or possession by the User of this TND™ product.

These terms and conditions constitute the entire agreement between Rand McNally (and its licensors and suppliers) and the User pertaining to the subject matter hereof, and supersedes in their entirety any and all written or oral agreements previously existing between us with respect to such subject matter. The terms and conditions (including the license) may be updated from time to time. The above terms and conditions shall be governed by the laws of Illinois, without giving effect to (i) its conflict of laws provisions, or (ii) the United Nations Convention for Contracts for the International Sale of Goods, which is explicitly excluded. The User agrees to submit to the jurisdiction of Illinois for any and all disputes, claims and actions arising from or in connection with the Data provided to the User hereunder.

User shall not export the TND™ product in violation of any U.S. or foreign laws. Rand McNally's licensors shall be third party beneficiaries of Rand McNally's rights under this license, but are not parties hereto and have no obligations hereunder.

By using this product you agree to be bound both by the foregoing and to the terms of use found at [www.randmcnally.com/truckgps](http://www.randmcnally.com/truckgps).

Restricted Rights Legend. For governmental agencies: Use, reproduction or disclosure is subject to restrictions set forth in subparagraph (c) (1) (iii) of the Right in Technical Data and Computer Software clause at DFARS 52.227-7013, as amended.

Rand McNally, the Rand McNally logo, the globe design mark, TripMaker, and IntelliRoute are registered trademarks and TND is a trademark of RM Acquisition, LLC, d/b/a Rand McNally.

The term Wi-Fi® is a registered trademark of the Wi-Fi Alliance®. Android is a trademark of Google, Inc.

Copyright © 2022 Rand McNally. All rights reserved.

Portions © 2022 HERE. All rights reserved. This data includes information taken with permission from Canadian authorities, including © Her Majesty the Queen in Right of Canada, © Queen's Printer for Ontario.

## Warnings, End-User License Agreement, and Warranty continued.

The Bluetooth® word mark and logos are registered trademarks owned by the Bluetooth SIG, Inc.

Traffic information provided by INRIX © 2022. All rights reserved by INRIX, Inc. Portions © 2022 NDrive. Weather information provided by VAISALA © 2022.

All rights reserved. Portions © 2022 DC Book Co. Portions © 2022 TruckDown. All rights reserved. Patent pending. U.S. Patent Nos. 7,580,791 and 8,214,141.

**⚠ WARNING:** California Prop 65: Cancer and Reproductive Harm – [www.P65Warnings.ca.gov](http://www.P65Warnings.ca.gov)

## Notes:

---

---

---

---

---

---

---

---

---

---

---

---

---

---

---

---

## Notes:

---

---

---

---

---

---

---

---

---

---

---

---

---

---

---

---

---

---

---

---

---

---

---

---

### FCC Statement:

This device complies with part 15 of the FCC Rules. Operation is subject to the following two conditions: (1) This device may not cause harmful interference, and (2) this device must accept any interference received, including interference that may cause undesired operation.

This equipment has been tested and found to comply with the limits for a Class B digital device, pursuant to part 15 of the FCC Rules. These limits are designed to provide reasonable protection against harmful interference in a residential installation. This equipment generates, uses and can radiate radio frequency energy and, if not installed and used in accordance with the instructions, may cause harmful interference to radio communications. However, there is no guarantee that interference will not occur in a particular installation. If this equipment does cause harmful interference to radio or television reception, which can be determined by turning the equipment off and on, the user is encouraged to try to correct the interference by one or more of the following measures:

- Reorient or relocate the receiving antenna.

- Increase the separation between the equipment and receiver.

- Connect the equipment into an outlet on a circuit different from that to which the receiver is connected.

- Consult the dealer or an experienced radio/TV technician for help.

Caution: Any changes or modifications not expressly approved by the party responsible for compliance could void the user's authority to operate the equipment.

This equipment complies with FCC radiation exposure limits set forth for an uncontrolled environment. This transmitter must not be co-located or operating in conjunction with any other antenna or transmitter.

This equipment should be installed and operated with minimum distance 20cm between the radiator & your body.

### IC Statement:

This device complies with Industry Canada's licence - exempt RSSs. Operation is subject to the following two conditions:

(1) This device may not cause interference; and

(2) This device must accept any interference, including interference that may cause undesired operation of the device.

Le présent appareil est conforme aux CNR d'Industrie Canada applicables aux appareils radio exempts de licence. L'exploitation est autorisée aux deux conditions suivantes : (1) l'appareil ne doit pas produire de brouillage, et (2) l'utilisateur de l'appareil doit accepter tout brouillage radioélectrique subi, même si le brouillage est susceptible d'en compromettre le fonctionnement.