

20170113_System check_Diple2450v2 SN728

Frequency: 2450 MHz; Duty Cycle: 1:1; Room Ambient Temperature: 24.0°C; Liquid Temperature: 23.5°C

Medium parameters used (interpolated): $f = 2450$ MHz; $\sigma = 1.925$ S/m; $\epsilon_r = 51.486$; $\rho = 1000$ kg/m³

DASY5 Configuration:

- Area Scan Setting - Find Secondary Maximum Within: 2.0 dB and with a peak SAR value greater than 0.0012W/kg
- Electronics: DAE4 Sn877; Calibrated: 2016/3/21
- Probe: EX3DV4 - SN3665; ConvF(7.32, 7.32, 7.32); Calibrated: 2016/5/26;
- Sensor-Surface: 1.4mm (Mechanical Surface Detection)
- Phantom: ELI 4.0; Type: QDOVA001BA; Serial: 1056

Body/Pin=100mW, d=10mm/Area Scan (7x9x1): Measurement grid: dx=15mm, dy=15mm

[Info: Interpolated medium parameters used for SAR evaluation.](#)

Maximum value of SAR (measured) = 8.05 W/kg

Body/Pin=100mW, d=10mm/Zoom Scan (7x7x7)/Cube 0: Measurement grid: dx=5mm, dy=5mm, dz=5mm

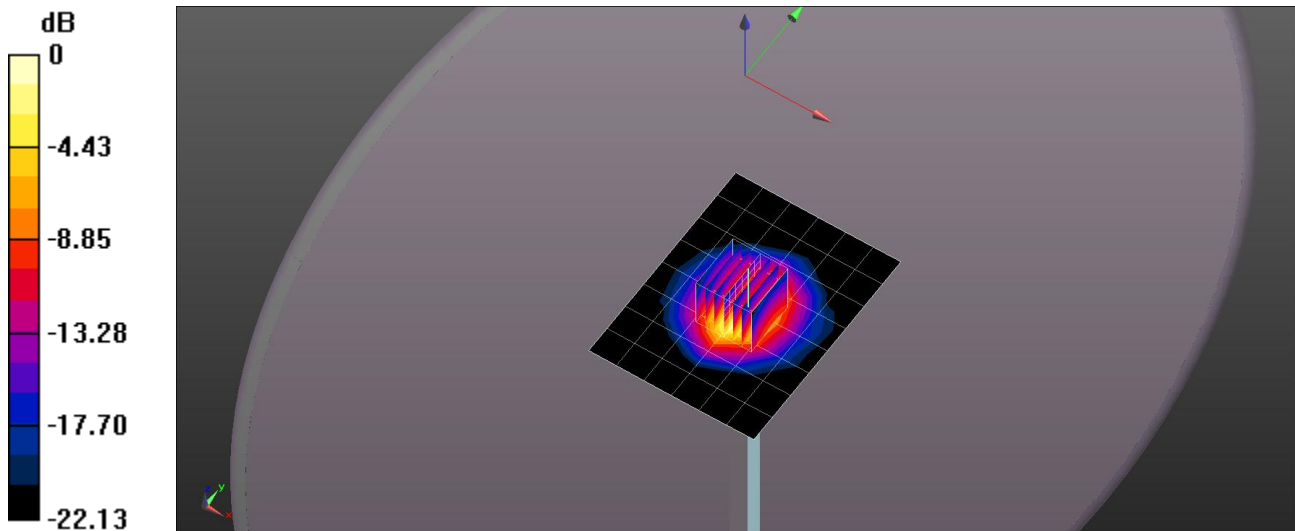
Reference Value = 67.00 V/m; Power Drift = 0.06 dB

Peak SAR (extrapolated) = 9.97 W/kg

SAR(1 g) = 4.95 W/kg; SAR(10 g) = 2.34 W/kg

[Info: Interpolated medium parameters used for SAR evaluation.](#)

Maximum value of SAR (measured) = 8.09 W/kg



0 dB = 8.09 W/kg = 9.08 dBW/kg

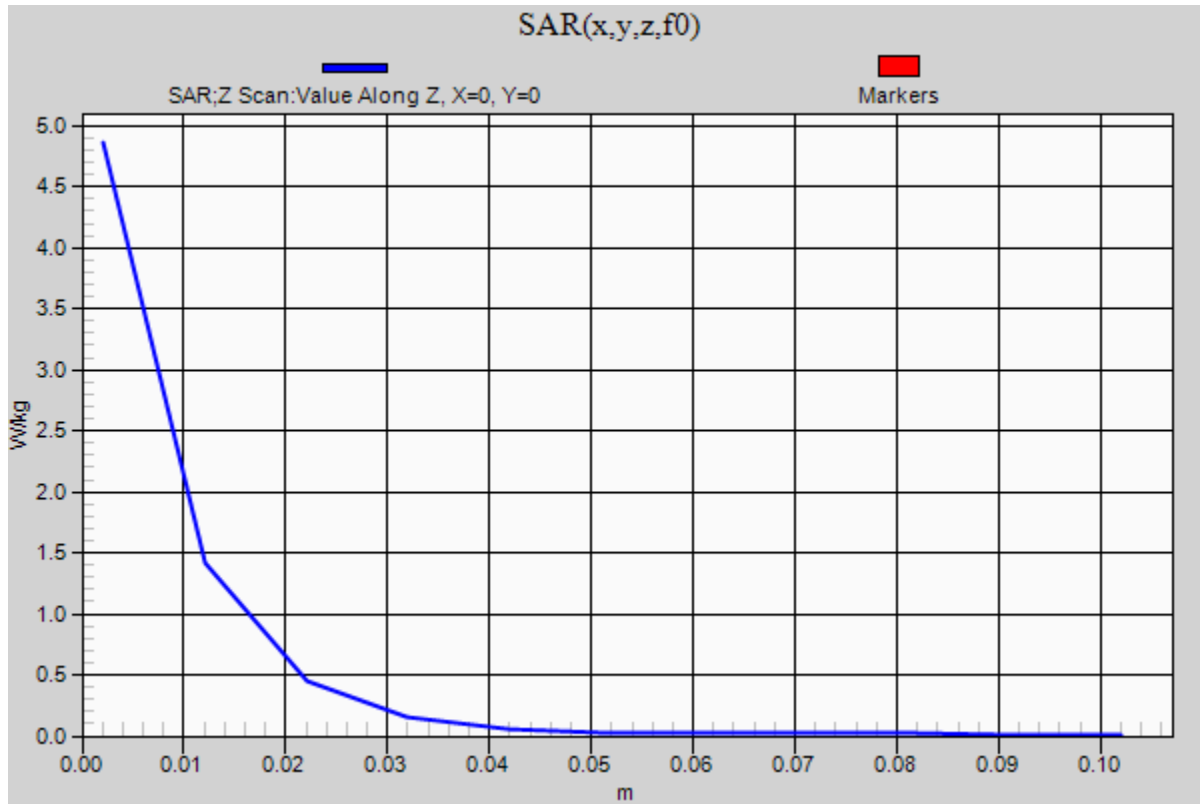
20170113_System check_Diple2450v2 SN728

Frequency: 2450 MHz; Duty Cycle: 1:1

Body/Pin=100mW, d=10mm/Z Scan (1x1x11): Measurement grid: dx=20mm, dy=20mm, dz=10mm

Info: [Interpolated medium parameters used for SAR evaluation.](#)

Maximum value of SAR (measured) = 4.86 W/kg



20170321_System check_Diple2450v2 SN728

Frequency: 2450 MHz; Duty Cycle: 1:1; Room Ambient Temperature: 24.0°C; Liquid Temperature: 23.5°C

Medium parameters used (interpolated): $f = 2450$ MHz; $\sigma = 2.037$ S/m; $\epsilon_r = 52.071$; $\rho = 1000$ kg/m³

DASY5 Configuration:

- Area Scan Setting - Find Secondary Maximum Within: 2.0 dB and with a peak SAR value greater than 0.0012W/kg
- Electronics: DAE4 Sn917; Calibrated: 2017/1/6
- Probe: EX3DV4 - SN3665; ConvF(7.32, 7.32, 7.32); Calibrated: 2016/5/26;
- Sensor-Surface: 1.4mm (Mechanical Surface Detection)
- Phantom: ELI 4.0; Type: QDOVA001BA; Serial: 1056

Body/Pin=100mW, d=10mm/Area Scan (7x9x1): Measurement grid: dx=15mm, dy=15mm

[Info: Interpolated medium parameters used for SAR evaluation.](#)

Maximum value of SAR (measured) = 8.50 W/kg

Body/Pin=100mW, d=10mm/Zoom Scan (7x7x7)/Cube 0: Measurement grid: dx=5mm, dy=5mm, dz=5mm

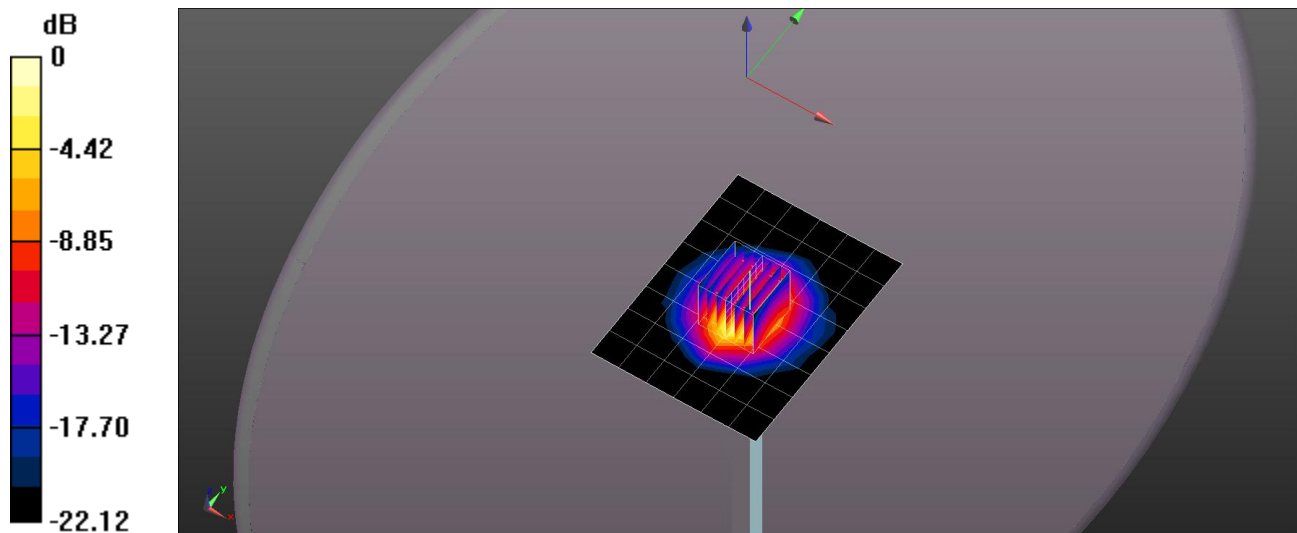
Reference Value = 66.92 V/m; Power Drift = 0.026 dB

Peak SAR (extrapolated) = 10.5 W/kg

SAR(1 g) = 5.23 W/kg; SAR(10 g) = 2.47 W/kg

[Info: Interpolated medium parameters used for SAR evaluation.](#)

Maximum value of SAR (measured) = 8.55 W/kg



0 dB = 8.55 W/kg = 9.32 dBW/kg

20170321_System check_Diple2450v2 SN728

Frequency: 2450 MHz; Duty Cycle: 1:1

Body/Pin=100mW, d=10mm/Z Scan (1x1x11): Measurement grid: dx=20mm, dy=20mm, dz=10mm

Info: [Interpolated medium parameters used for SAR evaluation.](#)

Maximum value of SAR (measured) = 5.13 W/kg

