

T03 802.11b_Left Side_0cm_Ch11

DUT: 1605099;

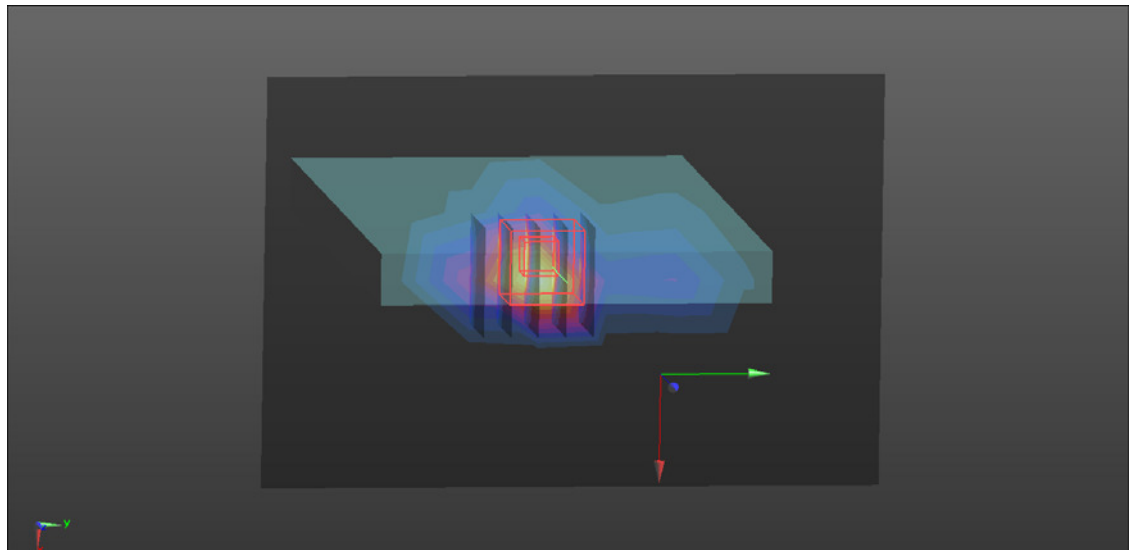
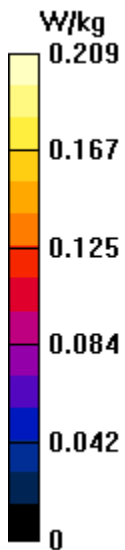
Communication System: UID 0, WiFi (0); Frequency: 2462 MHz; Duty Cycle: 1:1
Medium parameters used: $f = 2462$ MHz; $\sigma = 2.001$ S/m; $\epsilon_r = 51.39$; $\rho = 1000$ kg/m³
Ambient Temperature : 22.6 °C; Liquid Temperature : 22.3 °C

DASY Configuration:

- Probe: EX3DV4 - SN7369; ConvF(7.19, 7.19, 7.19); Calibrated: 8/18/2015;
- Sensor-Surface: 2mm (Mechanical Surface Detection), $z = 1.0, 31.0$
- Electronics: DAE4 Sn1486; Calibrated: 8/27/2015
- Phantom: Oval Flat Phantom ELI 5.0; Type: QD OVA 002 A ; Serial: TP-1240
- DASY52 52.8.8(1222); SEMCAD X 14.6.10(7331)

Area Scan (7x10x1): Measurement grid: $dx=20$ mm, $dy=20$ mm
Maximum value of SAR (measured) = 0.209 W/kg

Zoom Scan (5x5x7)/Cube 0: Measurement grid: $dx=8$ mm, $dy=8$ mm, $dz=5$ mm
Reference Value = 8.981 V/m; Power Drift = 0.05 dB
Peak SAR (extrapolated) = 0.509 W/kg
SAR(1 g) = 0.231 W/kg; SAR(10 g) = 0.094 W/kg
Maximum value of SAR (measured) = 0.324 W/kg



T19 802.11a_Rear Face_0cm_Ch48

DUT: 1605099;

Communication System: UID 0, WiFi (0); Frequency: 5240 MHz; Duty Cycle: 1:1
Medium parameters used: $f = 5240$ MHz; $\sigma = 5.203$ S/m; $\epsilon_r = 48.097$; $\rho = 1000$ kg/m³
Ambient Temperature : 22.4 °C; Liquid Temperature : 21.8 °C

DASY Configuration:

- Probe: EX3DV4 - SN7369; ConvF(4.57, 4.57, 4.57); Calibrated: 8/18/2015;
- Sensor-Surface: 2mm (Mechanical Surface Detection), $z = 1.0, 23.0$
- Electronics: DAE4 Sn1486; Calibrated: 8/27/2015
- Phantom: Oval Flat Phantom ELI 5.0; Type: QD OVA 002 A ; Serial: TP-1240
- DASY52 52.8.8(1222); SEMCAD X 14.6.10(7331)

Area Scan (14x21x1): Measurement grid: $dx=10$ mm, $dy=10$ mm
Maximum value of SAR (measured) = 0.680 W/kg

Zoom Scan (6x6x12)/Cube 0: Measurement grid: $dx=4$ mm, $dy=4$ mm, $dz=2$ mm
Reference Value = 3.490 V/m; Power Drift = -0.05 dB
Peak SAR (extrapolated) = 2.02 W/kg
SAR(1 g) = 0.449 W/kg; SAR(10 g) = 0.203
Maximum value of SAR (measured) = 0.932 W/kg

