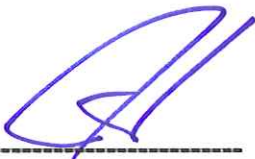



FCC TEST REPORT

Reference No. : G-45-2009-01216
Applicant : SAMSUNG ELECTRONICS CO., LTD.
Equipment Under Test (EUT) :
 Product Name : BLUETOOTH MP3 PLAYER
 Model Name : YP-R1
 Alternative Models : YP-R1**, YP-R1J**
Applied Standards : FCC Part 15 : 2008, Subpart B, Class B
 ANSI C63.4 : 2003
 CISPR 22 : 2006
Date of Receipt : April 27, 2009
Date of Test : May 22, 2009 ~ June 15, 2009
Date of Issue : July 15, 2009
Test Results : Complied

Tested by	:		 ----- John Oh
Reviewed by	:		 ----- Forest Lee

Remarks :

This report details the results of the testing carried out on one sample, the results contained in this test report do not relate to other samples of the same product. The manufacturer should ensure that all products in series production are in conformity with the product sample detailed in this report.

This report may only be reproduced and distributed in full. If the product in this report is used in any configuration other than that detailed in the report, the manufacturer must ensure the new system complies with all relevant standards. Any mention of SGS International Electrical Approvals or Testing done by SGS International Electrical Approvals in connection with distribution or use of the product described in this report must be approved by SGS international Electrical Approvals in writing.

Contents

1. General Information.....	3
1.1 Client Information.....	3
1.2 Test Laboratory.....	3
1.3 General Information of E.U.T.	3
1.4 Operating Modes and Conditions.....	4
1.5 Peripheral Equipments.....	4
1.6 Cable List.....	4
1.7 System Configurations.....	4
1.8 Test System Layout	5
1.9 Applicable Standards for Testing	5
1.10 Summary of Test Results.....	5
2. Test Description	6
2.1 Test Equipments	6
2.2 Test Site.....	6
2.3 Conducted Emission Test Data.....	6
2.4 Radiated Emission Test Data.....	7
2.5 Modifications	7
2.6 Photographs of Conducted Emission.....	8
2.7 Photographs of Radiated Emission.....	9
3. Photographs of EUT.....	10
Appendix A : Conducted Emission	15

1. General Information

1.1 Client Information

Applicant : SAMSUNG ELECTRONICS CO., LTD.
Address of Applicant : 416, Maetan 3 dong, Yeongtong-gu, Suwon-city, Gyeonggi-do, Korea
Manufacturer 1 : SAMSUNG ELECTRONICS HUIZHOU CO., LTD.
Manufacturer 2 : P.T. Samsung Electronics Indonesia
Address of Manufacturer 1 : Industrial Complex, Chenjiang Town, Huizhou City, Guangdong Province China
Address of Manufacturer 2 : Cikarang Industrial Estate JI, Jababeka Raya Blok F 29-33 Cikarang, Bekasi 17530, Indonesia

1.2 Test Laboratory

Name and Address : SGS Testing Korea Co., Ltd.
18-34, Sanbon-dong, Gunpo, Gyeonggi-do, Korea
435-041

1.3 General Information of E.U.T.

Product Name : BLUETOOTH MP3 PLAYER
Model Name : YP-R1
Alternative Models : YP-R1**, YP-R1J**
Serial No. : 200904270001
Power Supply : Battery DC 3.7V Inside
Model Difference

UMS			
	BLACK	SILVER	PINK
4GB	YP-R1AB	YP-R1AS	YP-R1AP
8GB	YP-R1CB	YP-R1CS	YP-R1CP
16GB	YP-R1EB	YP-R1ES	YP-R1EP
32GB	YP-R1NB	YP-R1NS	YP-R1NP

MTP			
	BLACK	SILVER	PINK
4GB	YP-R1JAB	YP-R1JAS	YP-R1JAP
8GB	YP-R1JCB	YP-R1JCS	YP-R1JCP
16GB	YP-R1JEB	YP-R1JES	YP-R1JEP
32GB	YP-R1JNB	YP-R1JNS	YP-R1JNP

1.4 Operating Modes and Conditions

Operating mode	Operating condition
Mode 1 Up/Down Load (USB)	Data communication mode
Mode 2 MP3	MP3 Play mode
Mode 3 MP4	MP4 Play mode
Mode 4 FM Radio Receiver	FM Radio Receiver mode

1.5 Peripheral Equipments

Description	Model	Serial No.	Manufacturer
Notebook Computer	2366	99-LZKB3	LG IBM

1.6 Cable List

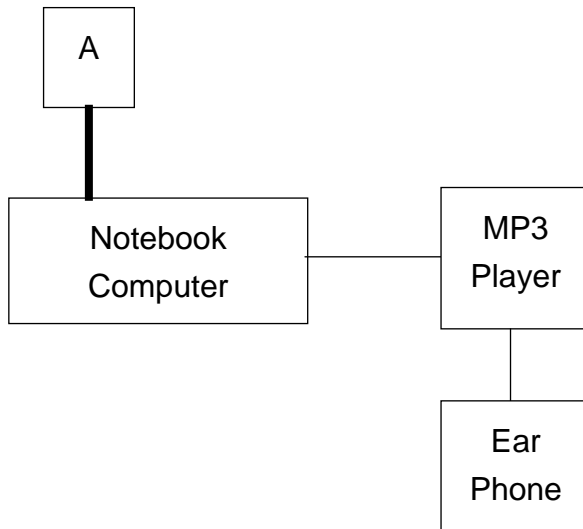
Start		END		Cable Spec.	
Name	I/O Port	Name	I/O Port	Length	Shield
MP3 Player	I/O	Notebook Computer	USB	0.95	Shielded
	Ear Phone Port	Ear Phone	-	1.13	Shielded
AC/DC Adapter	DC OUT	Notebook Computer	DC IN	1.7	Shielded
	AC IN	AC Source	-	1.8	Unshielded

1.7 System Configurations

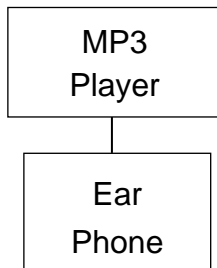
Description	Model	Serial No.	Manufacturer
Main Board	YP-R1	N/A	N/A
LCD Panel	8L27CWW	000072	N/A
Battery	N/A	N/A	N/A
Ear Phone	N/A	N/A	Samsung
USB Cable	N/A	N/A	Samsung

1.8 Test System Layout

- USB Mode



- MP3, MP4, FM Radio Receiver Mode



1.9 Applicable Standards for Testing

Standards	Status	Deviation
FCC Part 15, Subpart B	Applicable	No Deviation

1.10 Summary of Test Results

Test Item	Standards	Results
Conducted Emission	FCC Part 15, Subpart B	Complied
Radiated Emission	FCC Part 15, Subpart B	Complied

2. Test Description

2.1 Test Equipments

Equipment	Model	Manufacturer	Last Cal. Date
TWO-LINE V-NETWORK	ENV216	R&S	2009.01.07
Test Receiver	ESHS 10	R&S	2008.07.21
Test Receiver	ESVS 10	R&S	2009.04.17
Ultra Broadband Antenna	HL562	R&S	2007.10.02
Spectrum Analyzer	8593E	HP	2008.07.03
Amplifier	8447F	HP	2008.07.03

Note : Only the calibration period of Bi-Log Antenna is 2 years but the period of every equipment is 1 year.

2.2 Test Site

Conducted Emission : Shield Room in Gunpo Laboratory

Radiated Emission : 3m Semi-Anechoic chamber in Gunpo Laboratory.

2.3 Conducted Emission Test Data

Temperature : 23.6 °C ~ 23.7 °C

Humidity : 36.0 % RH ~ 37.0 % RH

Atmospheric Pressure : 103.0 kPa

USB Mode

FREQ. (MHz)	LINE	LEVEL(dB μ V)		LIMIT(dB μ V)		MARGIN(dB)	
		Q-Peak	Average	Q-Peak	Average	Q-Peak	Average
0.15	H	50.60	30.00	66.00	56.00	15.40	26.00
0.47	H	38.30	30.50	56.51	46.51	18.21	16.01
0.51	N	37.00	22.70	56.00	46.00	19.00	23.30
1.34	H	34.60	30.70	56.00	46.00	21.40	15.30
2.46	N	35.50	32.00	56.00	46.00	20.50	14.00
7.25	H	39.50	30.80	60.00	50.00	20.50	19.20

Note : • Line (H) : Hot

• Line (N) : Neutral

• Margin = Limit - Level

See Appendix A (Conducted Emission)

2.4 Radiated Emission Test Data

Temperature : 23.9 °C ~ 24.1 °C
Humidity : 37.0 % RH ~ 38.0 % RH
Atmospheric Pressure : 103.0 kPa

- USB Mode

FREQ. (MHz)	LEVEL (dB μ V)	POL (H/V)	AF (dB)	CL (dB)	F/S (dB μ V/m)	LIMIT (dB μ V/m)	MARGIN (dB)
96.00	17.50	H	8.94	1.12	27.56	43.50	15.94
133.05	19.80	V	8.83	1.30	29.93	43.50	13.57
171.40	25.70	V	7.70	1.46	34.86	43.50	8.64
800.90	14.70	H	19.61	3.22	37.53	46.00	8.47
801.22	14.20	V	19.62	3.22	37.04	46.00	8.96

- MP3 Mode

FREQ. (MHz)	LEVEL (dB μ V)	POL (H/V)	AF (dB)	CL (dB)	F/S (dB μ V/m)	LIMIT (dB μ V/m)	MARGIN (dB)
The emission level is very lower than the limit by over 20dB.							

- MP4 Mode

FREQ. (MHz)	LEVEL (dB μ V)	POL (H/V)	AF (dB)	CL (dB)	F/S (dB μ V/m)	LIMIT (dB μ V/m)	MARGIN (dB)
291.25	27.40	H	10.64	1.91	39.95	46.00	6.05
373.75	25.00	H	12.83	2.24	40.06	46.00	5.94
386.38	25.10	H	13.06	2.29	40.45	46.00	5.55
399.03	23.30	H	13.30	2.34	38.94	46.00	7.06

- FM Radio Receiver Mode

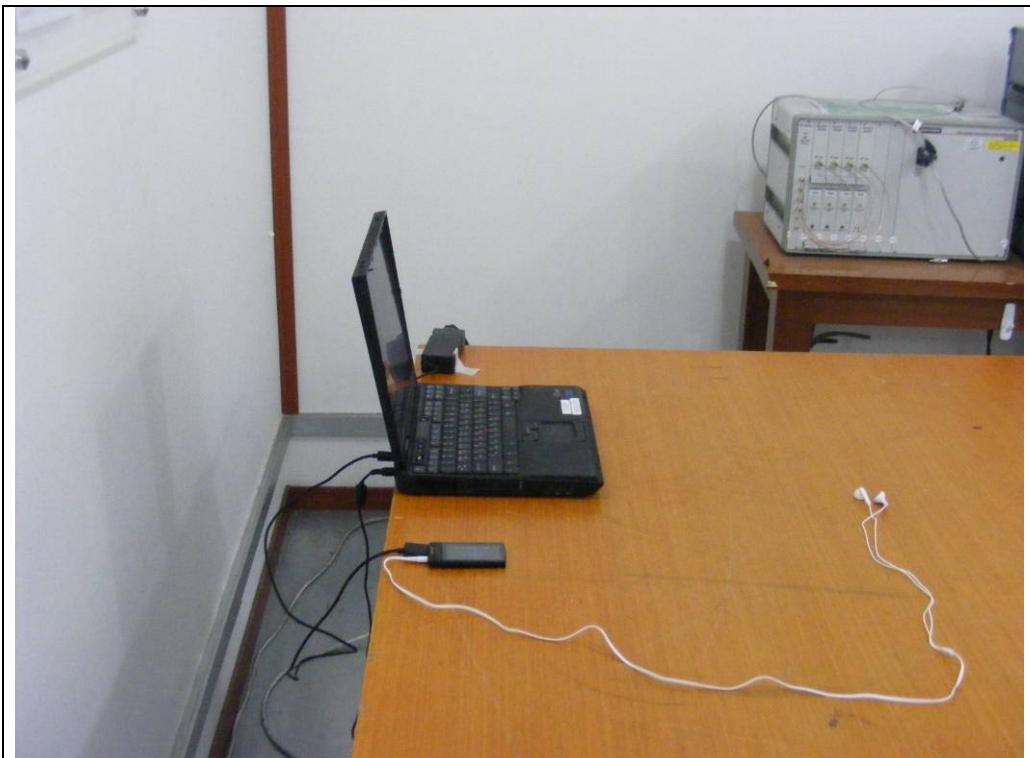
FREQ. (MHz)	LEVEL (dB μ V)	POL (H/V)	AF (dB)	CL (dB)	F/S (dB μ V/m)	LIMIT (dB μ V/m)	MARGIN (dB)
202.83	21.00	H	7.52	1.57	30.09	43.50	13.41
278.63	27.30	H	10.30	1.87	39.47	46.00	6.53
373.78	25.00	H	12.83	2.24	40.06	46.00	5.94
386.38	27.00	H	13.06	2.29	42.35	46.00	3.65

Note : • AF = Antenna Factor • CL = Cable Loss • F/S = Field Strength
• POL H = Horizontal • POL V = Vertical
• Margin = Limit – F/S • F/S = Level + AF + CL

2.5 Modifications

There was no modified item during the test.

2.6 Photographs of Conducted Emission



2.7 Photographs of Radiated Emission



3. Photographs of EUT

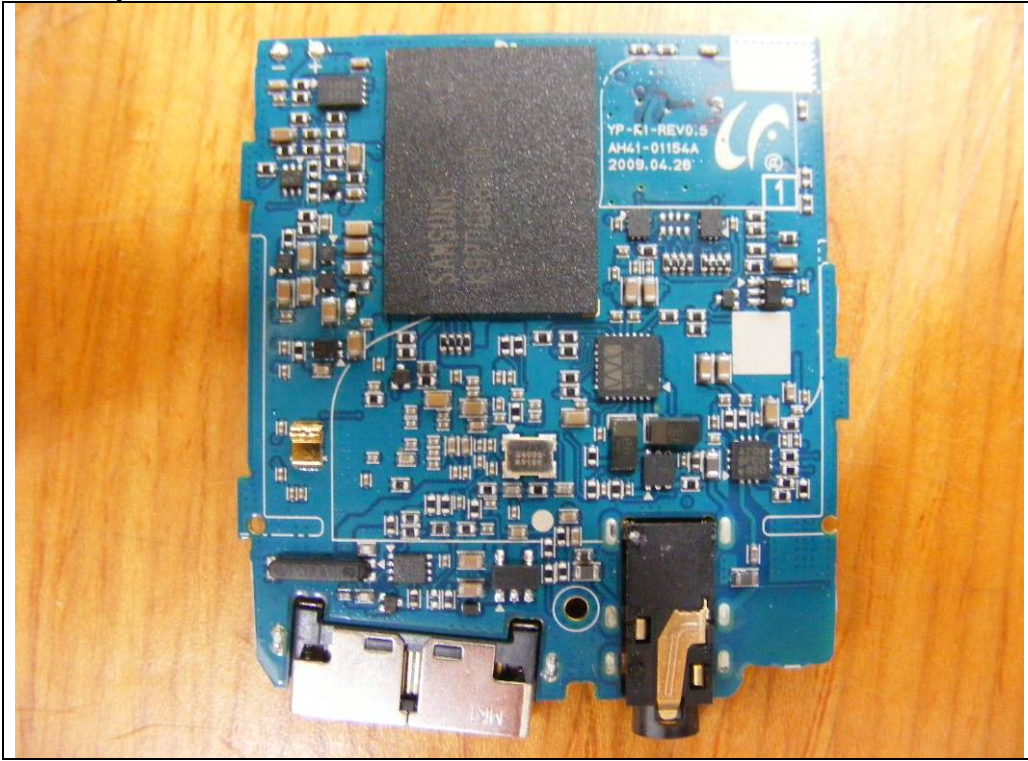
- Front View



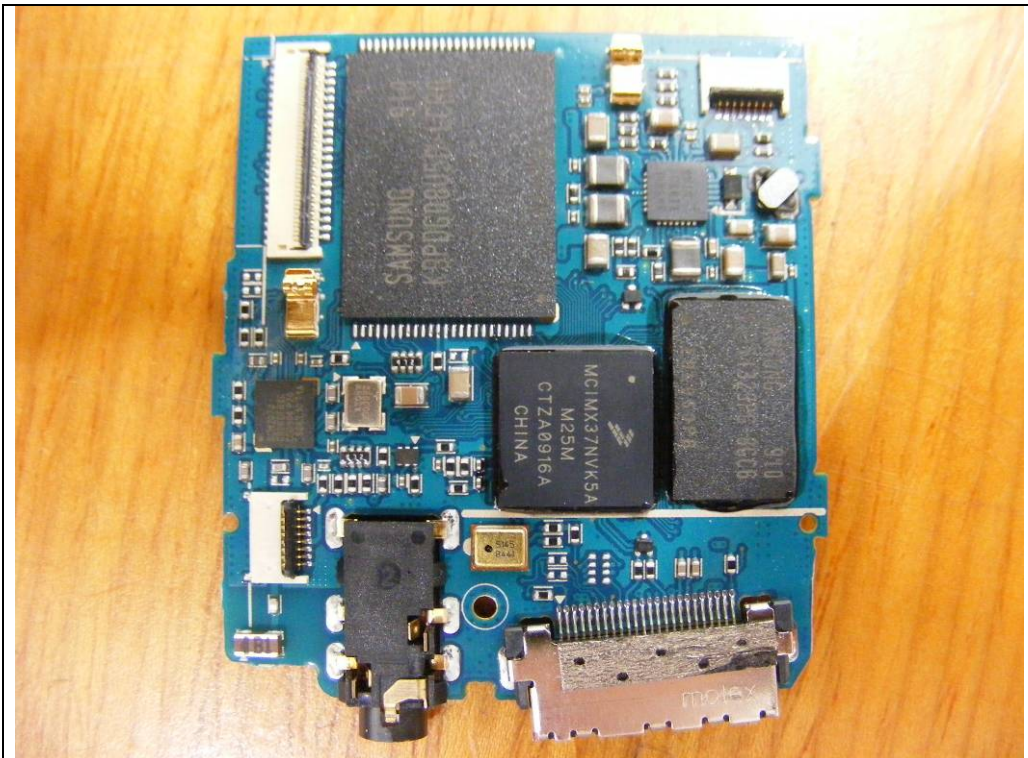
- Rear View



- Top View of Mainboard



- Bottom View of Mainboard



- **USB Cable**



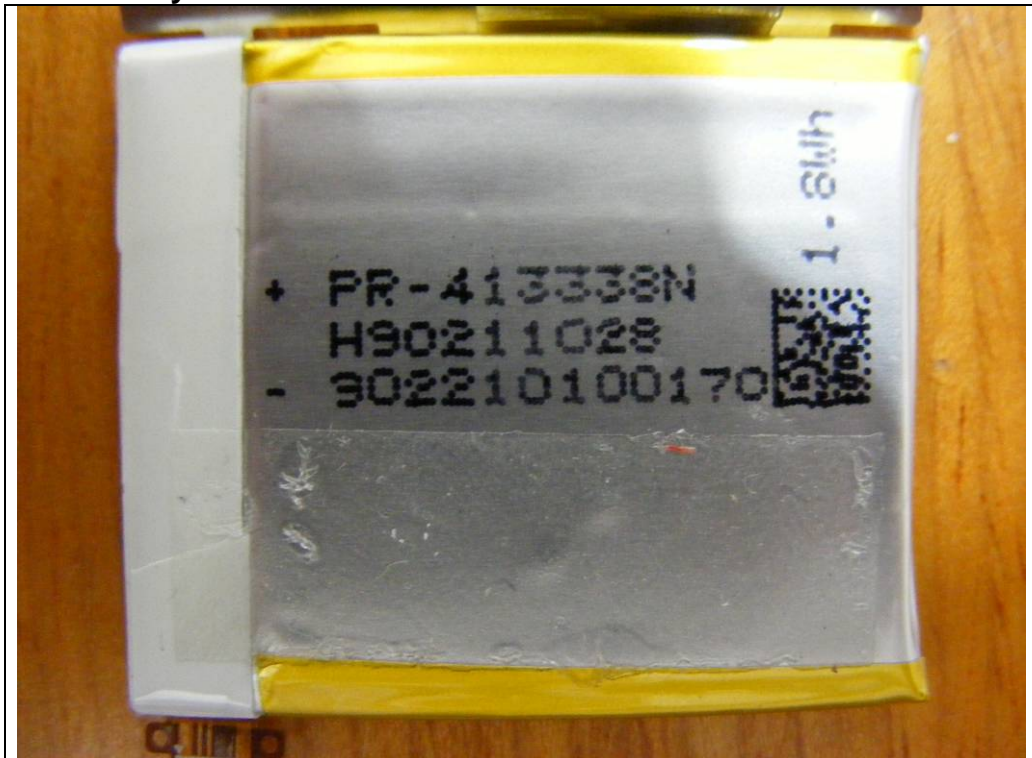
- **Top View of LCD Panel**



● Bottom View of LCD Panel



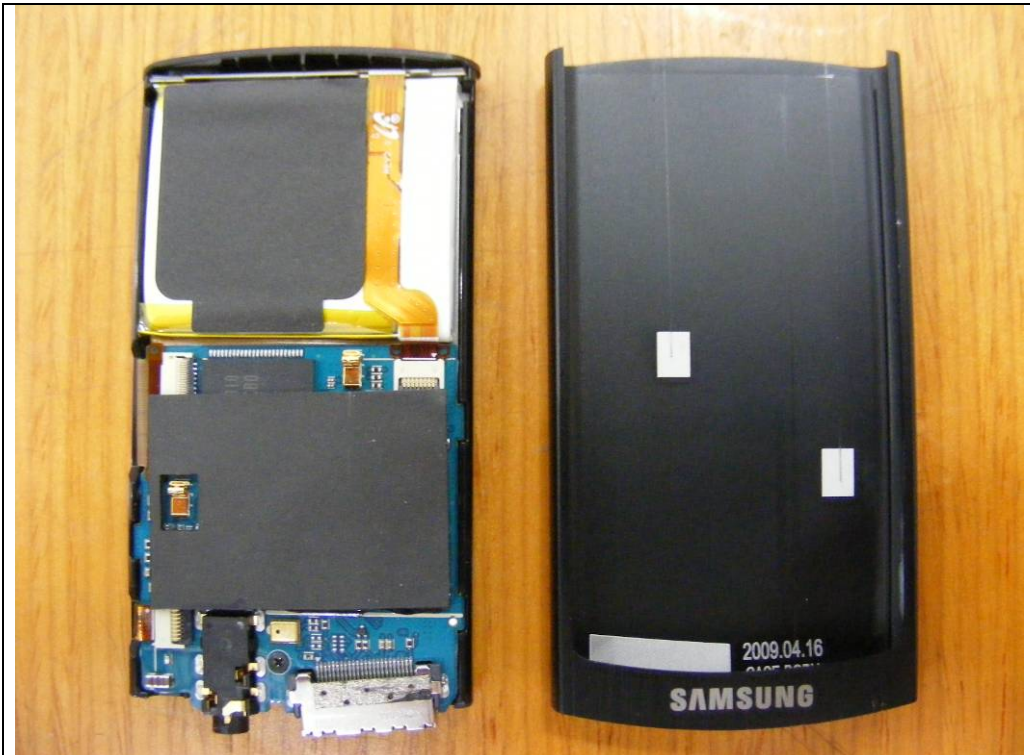
● Battery



● Ear Phone

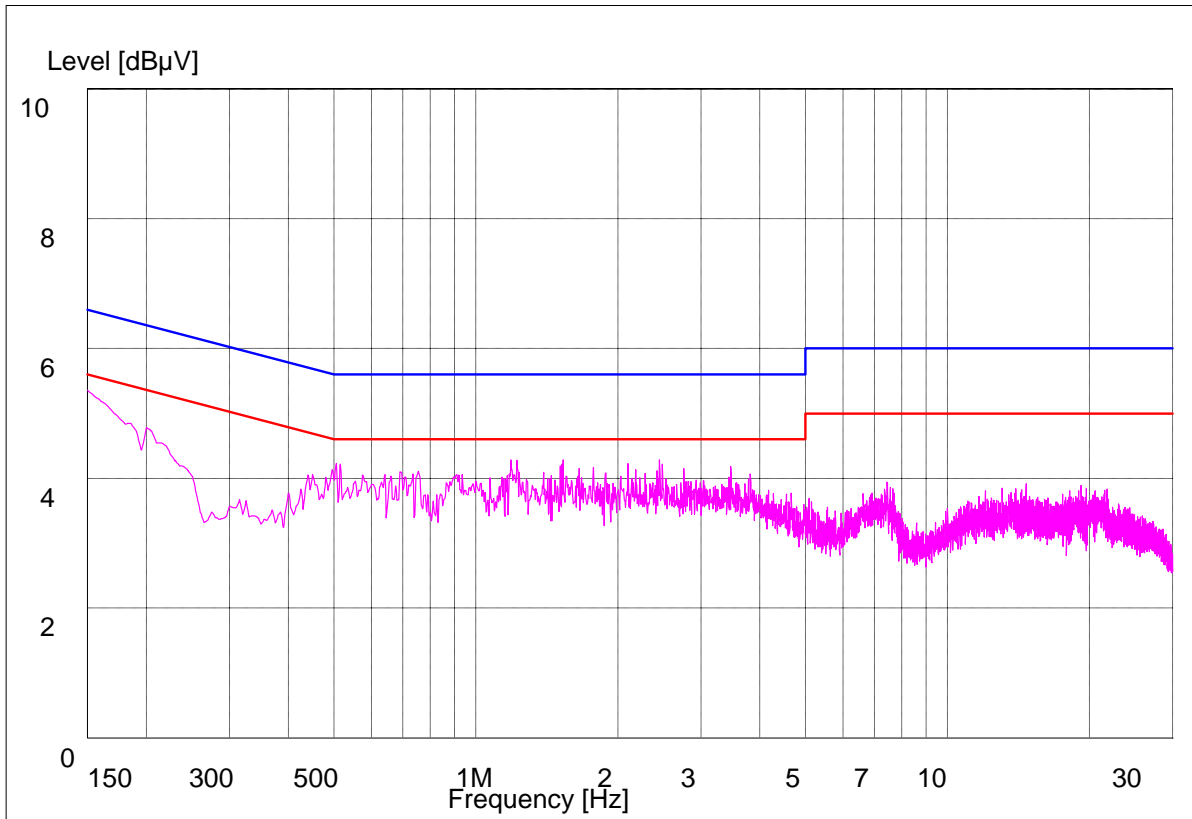


● Inside



Appendix A : Conducted Emission

Neutral



Hot

