

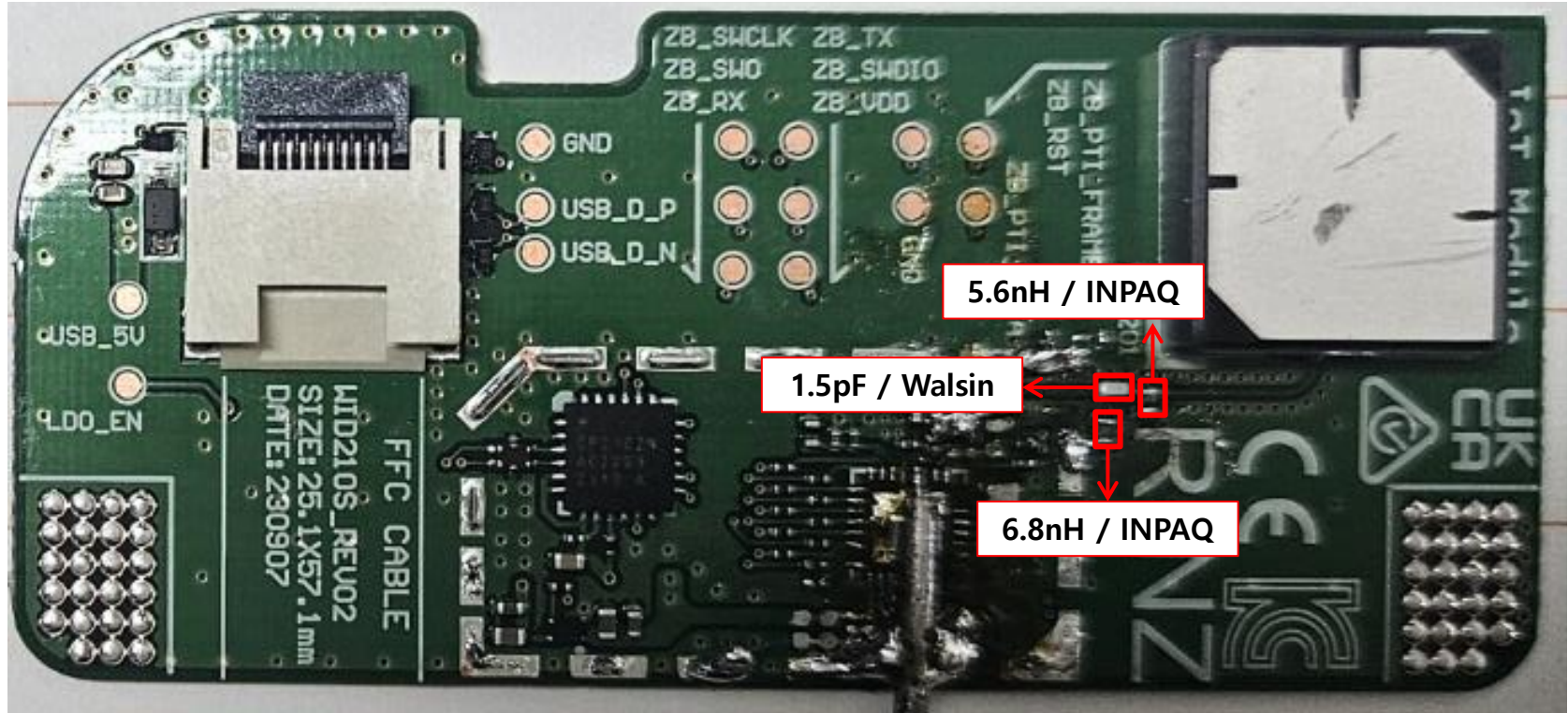
WID210s Passive Review

INPAQ Technology Co., Ltd.
Last updated in 2023.9.29

Content Details

- PCB overview
- Smith Chart & VSWR / 3D Gain data
- 2D Radiation Pattern & Gain
- 3D Radiation Pattern

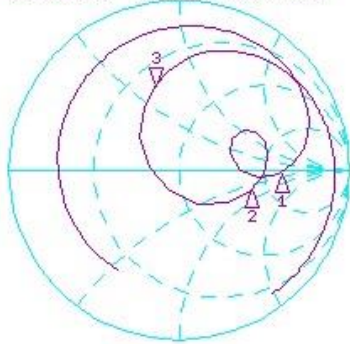
PCB Overview _ TEST Condition



VSWR & Smith Chart / 3D Gain data

[Smith Chart & VSWR]

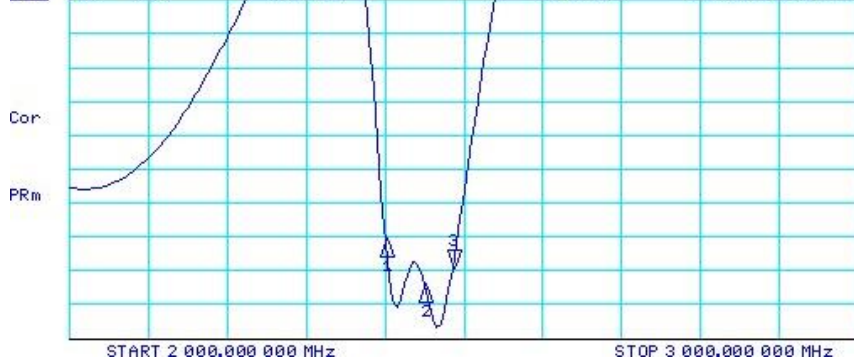
CH1 S11 1 U FS 3: 23.923 Ω 31.833 Ω 2.0388 nH 2 485.000 000 MHz



CH1 Markers

1: 194.66 Ω
-17.664 Ω
2.40000 GHz
2: 113.78 Ω
-35.332 Ω
2.45000 GHz

CH2 S11 SWR 1 / REF 1 3: 3.0922 2 485.000 000 MHz



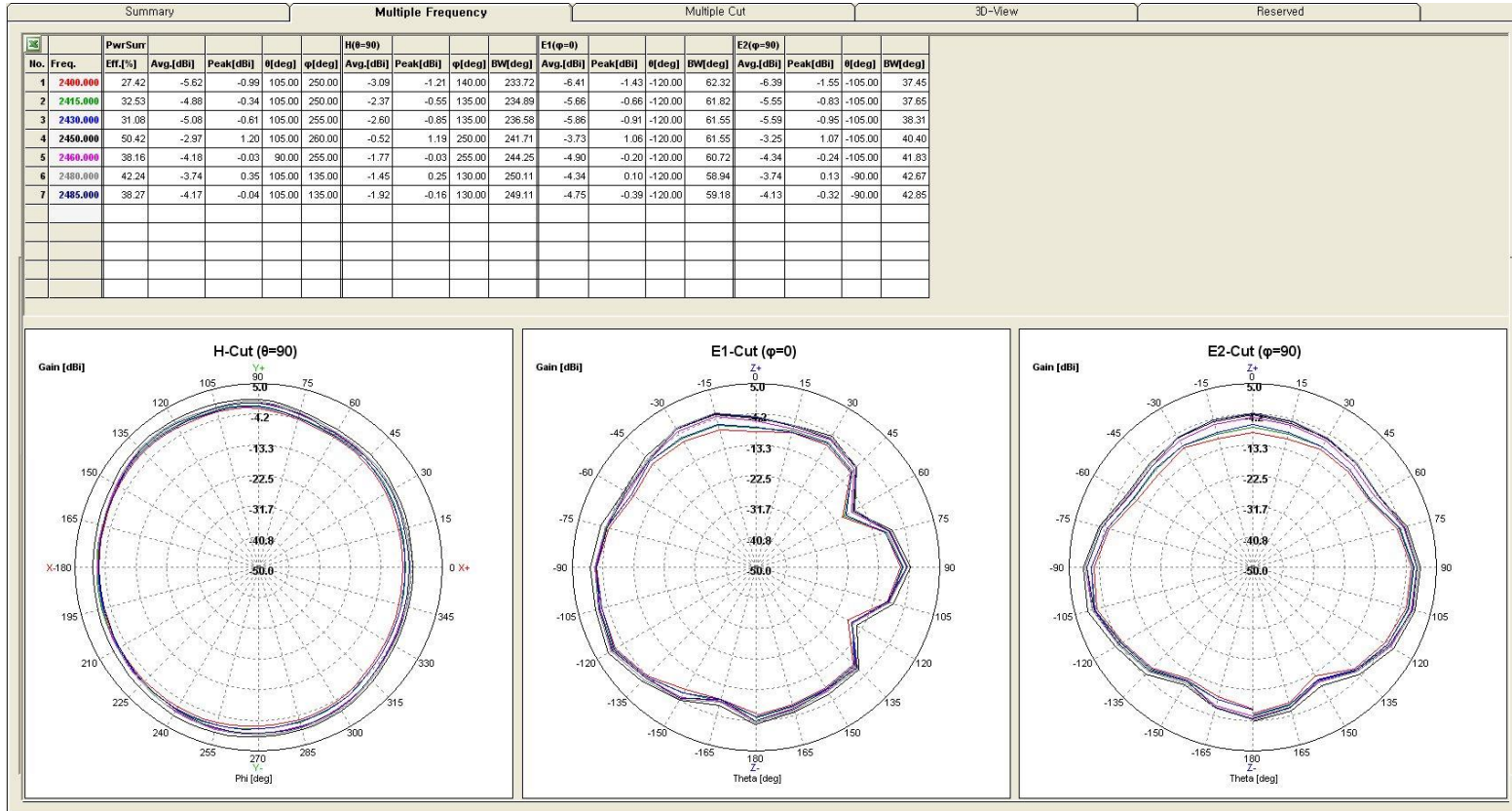
CH2 Markers

1: 3.9274
2.40000 GHz
2: 2.5488
2.45000 GHz

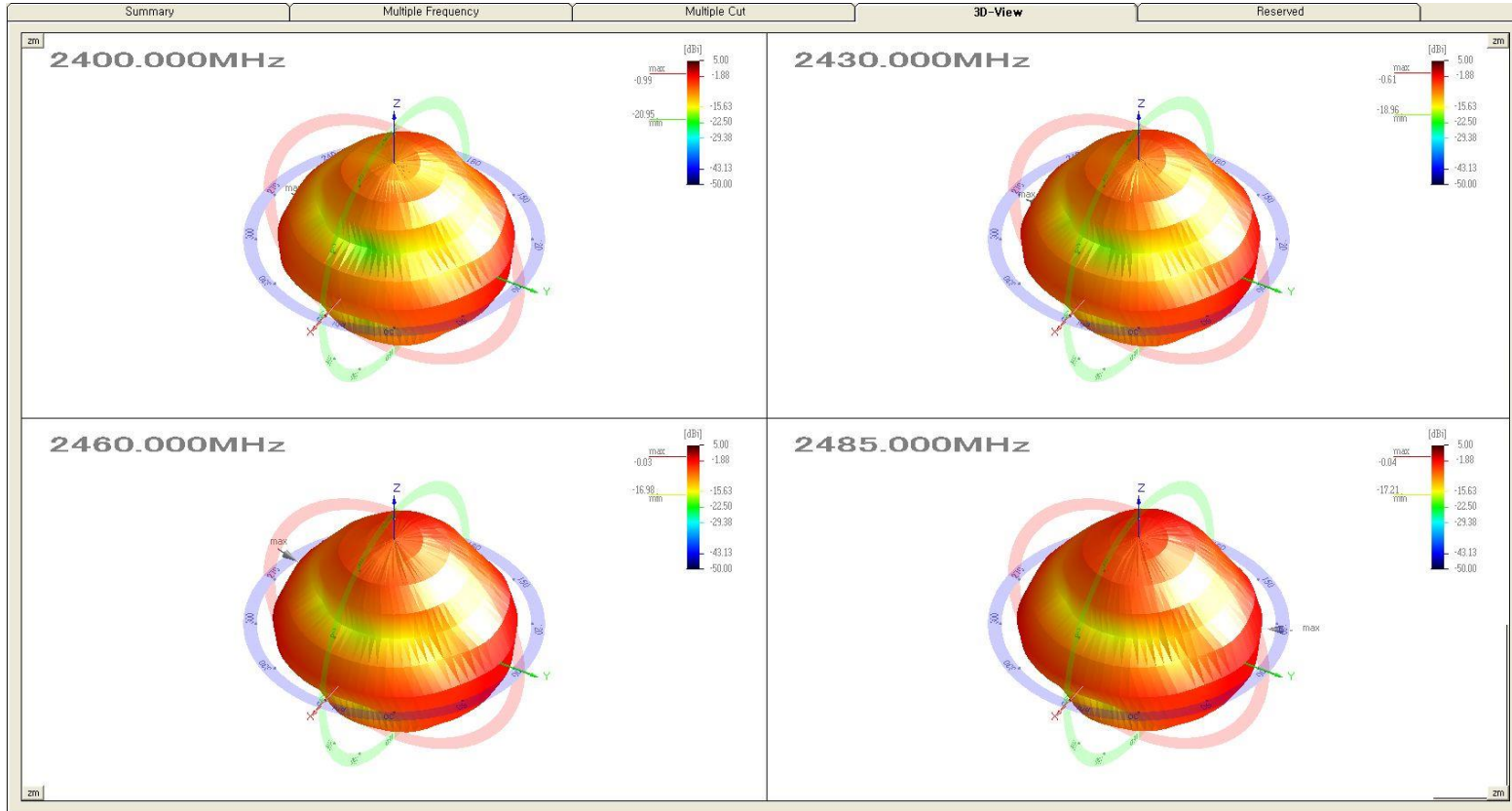
[3D Gain data]

Freq.[MHz]	Eff.[%]	Avg.[dBi]	Peak[dBi]
2400	27.42	-5.62	-0.99
2415	32.53	-4.88	-0.34
2430	31.08	-5.08	-0.61
2450	50.42	-2.97	1.2
2460	38.16	-4.18	-0.03
2480	42.24	-3.74	0.35
2485	38.27	-4.17	-0.04

2D Radiation Pattern & Gain



3D Radiation Pattern



Thank you

本資料均屬機密，僅供指定之收件人使用，未經寄件人許可不得揭露、複製或散佈本信件。

This message and any attachments are confidential and may be legally privileged. Any unauthorized review, use or distribution by anyone other than the intended recipient is strictly prohibited. If you are not the intended recipient, please immediately notify the sender, completely delete this documents, and destroy all copies. Your cooperation will be highly appreciated.