

WCF734M Antenna

INPAQ Technology Co., Ltd.
Last updated in 2024.10.17

Content Details

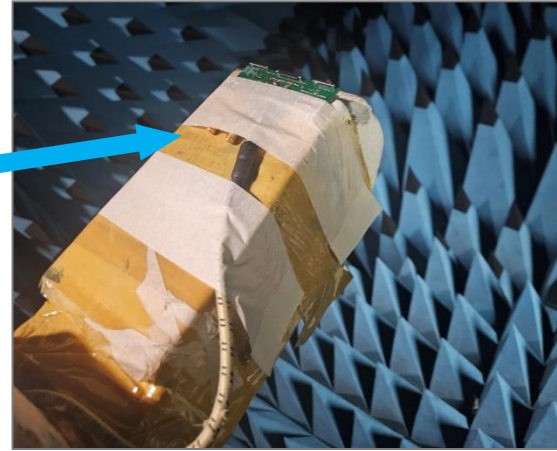
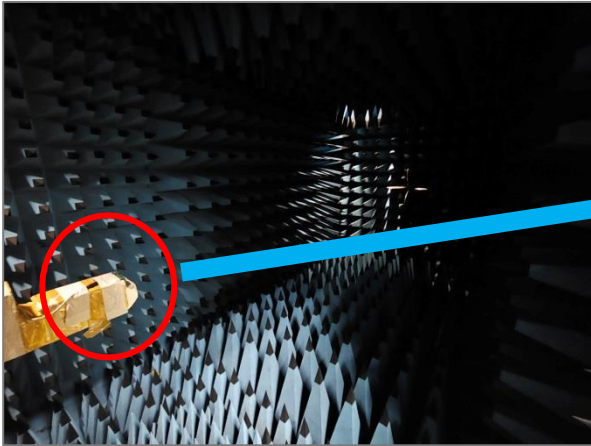
- TEST Condition
- TEST PCB
- VSWR & Smith Chart / 3D Gain data
- 3D Radiation pattern

TEST Condition

- WCF734M Metal Antenna
 - Test Chamber: Anechoic Chamber
(Address: #610, 102Dong, 36, Bucheon-ro 198beon-gil, Bucheonsi, Gyeonggi-do 14557, Korea)
 - Network Analyzer: VSWR
 - 3D Passive Chamber: Gain, Efficiency and 3D Pattern
 - Measured by Seong Hun Kim 2024/10/17

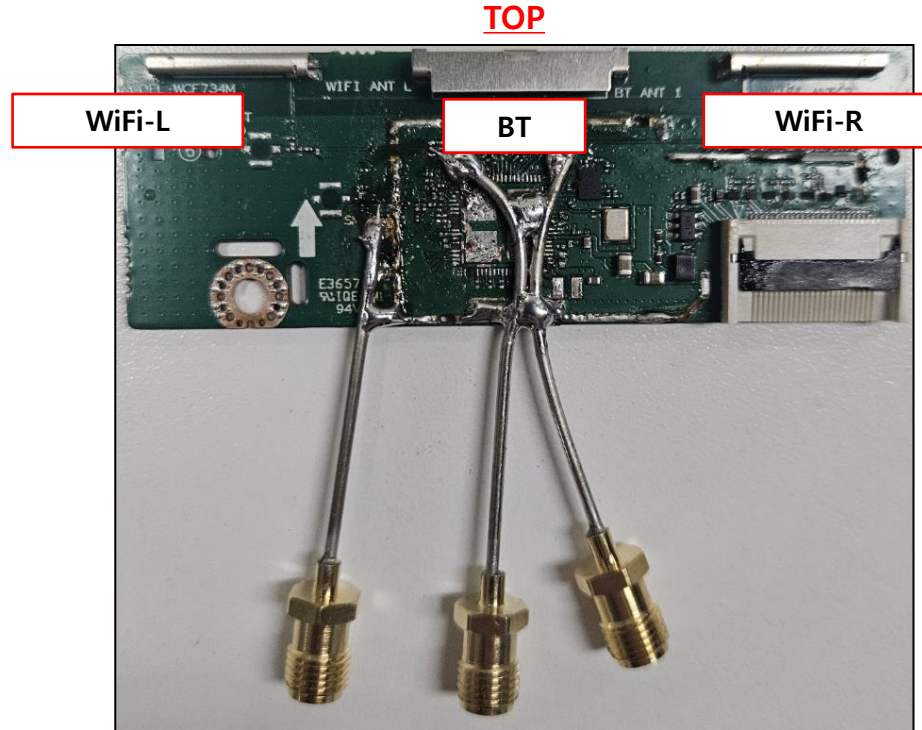
SeongHunKim

- TEST Environment



Item	Measuring Instruments	Latest Calibration Schedule
1	Anechoic Chamber	2024-10-17
2	Network Analyzer Agilent 5071BENA	2023-10-24

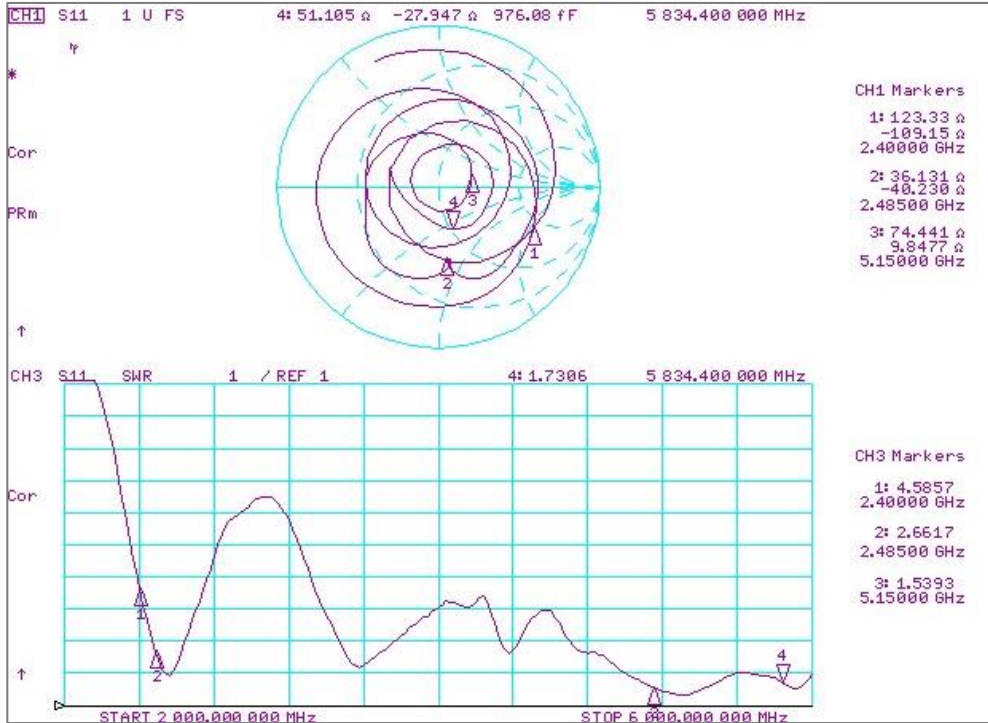
TEST PCB



WiFi-L

VSWR & Smith Chart / 3D Gain data_WiFi-L

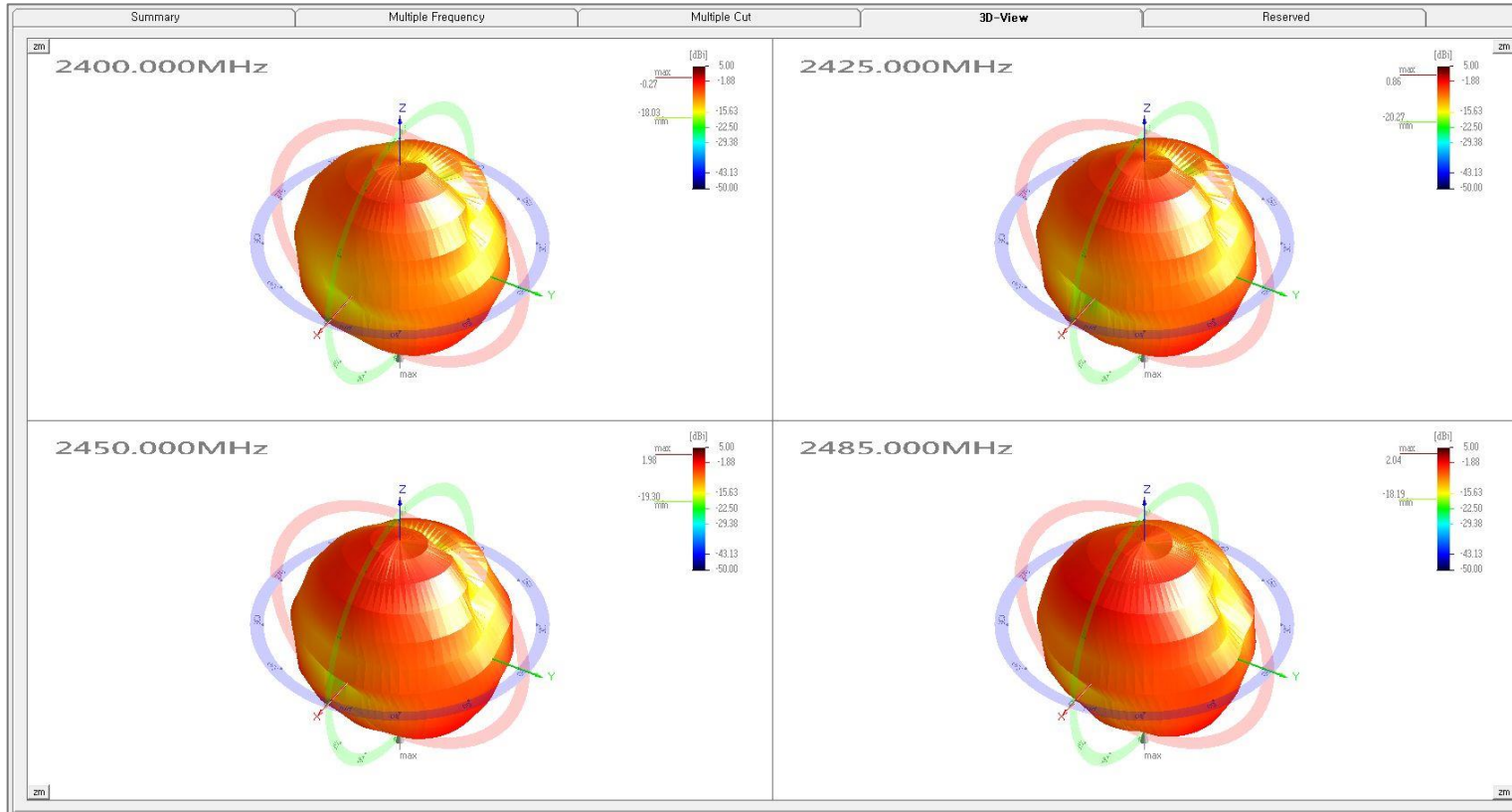
[Smith Chart & VSWR]



[3D Gain data]

Freq.[MHz]	Eff.[%]	Avg.[dBi]	Peak[dBi]
2400	20.73	-6.84	-0.27
2425	25.45	-5.94	0.86
2450	30.3	-5.19	-1.98
2485	28.84	-5.4	-0.94
5150	35.44	-4.5	0.72
5250	29.31	-5.33	-0.42
5350	37.4	-4.27	0.82
5450	34.58	-4.61	0.81
5550	36.66	-4.36	-1.14
5650	40.2	-3.96	1.04
5750	25.79	-5.89	-1.39
5850	26.17	-5.82	-1.14

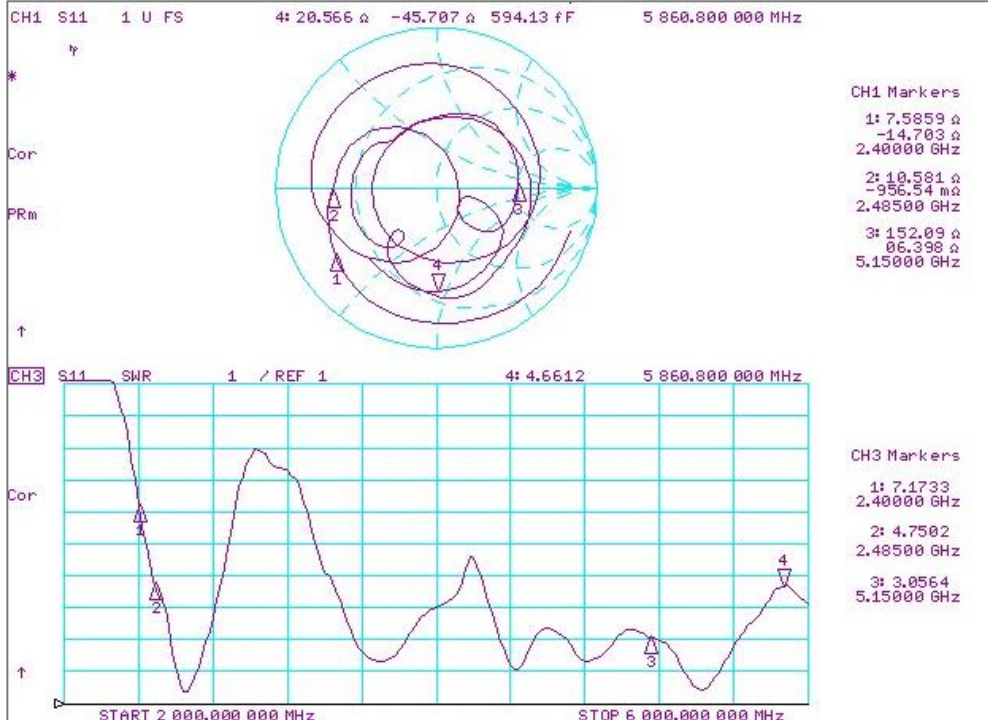
3D Radiation Pattern_WiFi-L



WiFi-R

VSWR & Smith Chart / 3D Gain data_WiFi-R

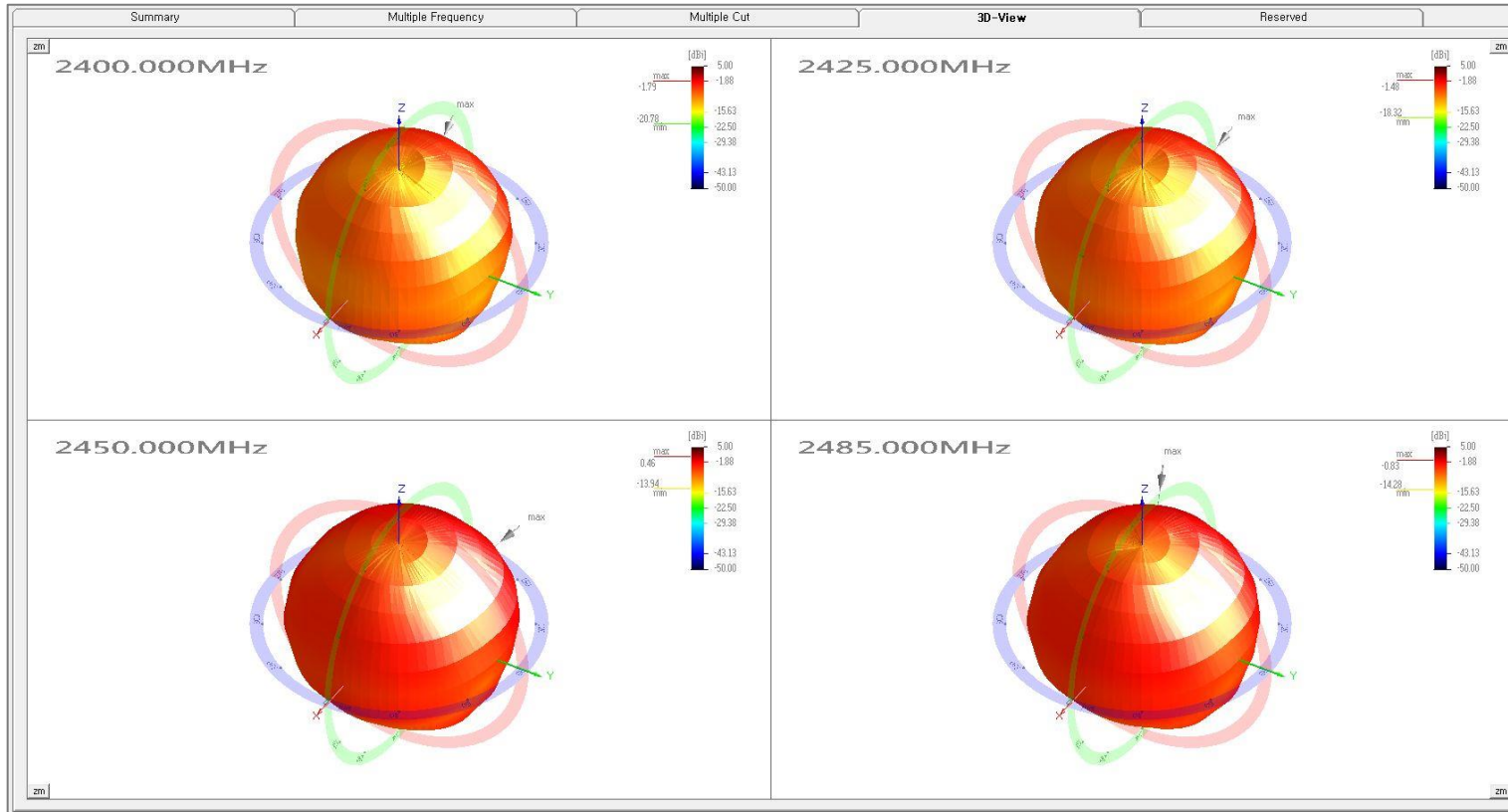
[Smith Chart & VSWR]



[3D Gain data]

Freq.[MHz]	Eff.[%]	Avg.[dBi]	Peak[dBi]
2400	23.76	-6.24	-1.79
2425	26.37	-5.79	-1.48
2450	45.2	-3.45	0.46
2485	37.97	-4.21	-0.83
5150	43.11	-3.65	-0.58
5250	45.58	-3.41	0.43
5350	50.16	-3	-0.58
5450	47.36	-3.25	1.2
5550	23.55	-6.28	-1.12
5650	31.6	-5	0.53
5750	13.05	-8.84	-3.26
5850	15.14	-8.2	-2.4

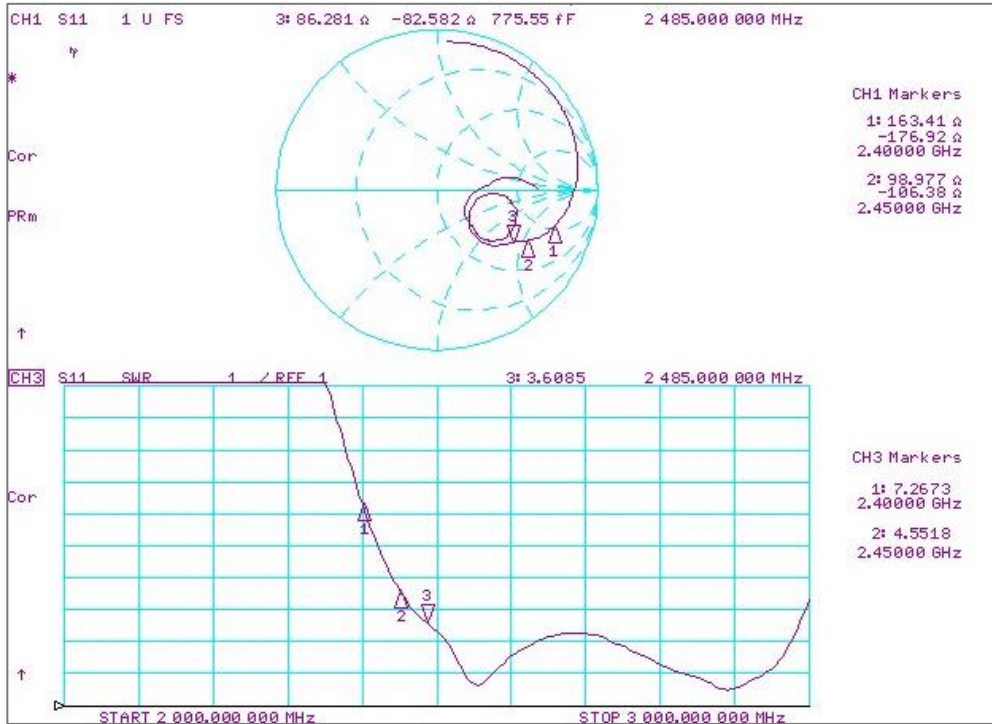
3D Radiation Pattern_WiFi-R



BT Antenna

VSWR & Smith Chart / 3D Gain data_BT

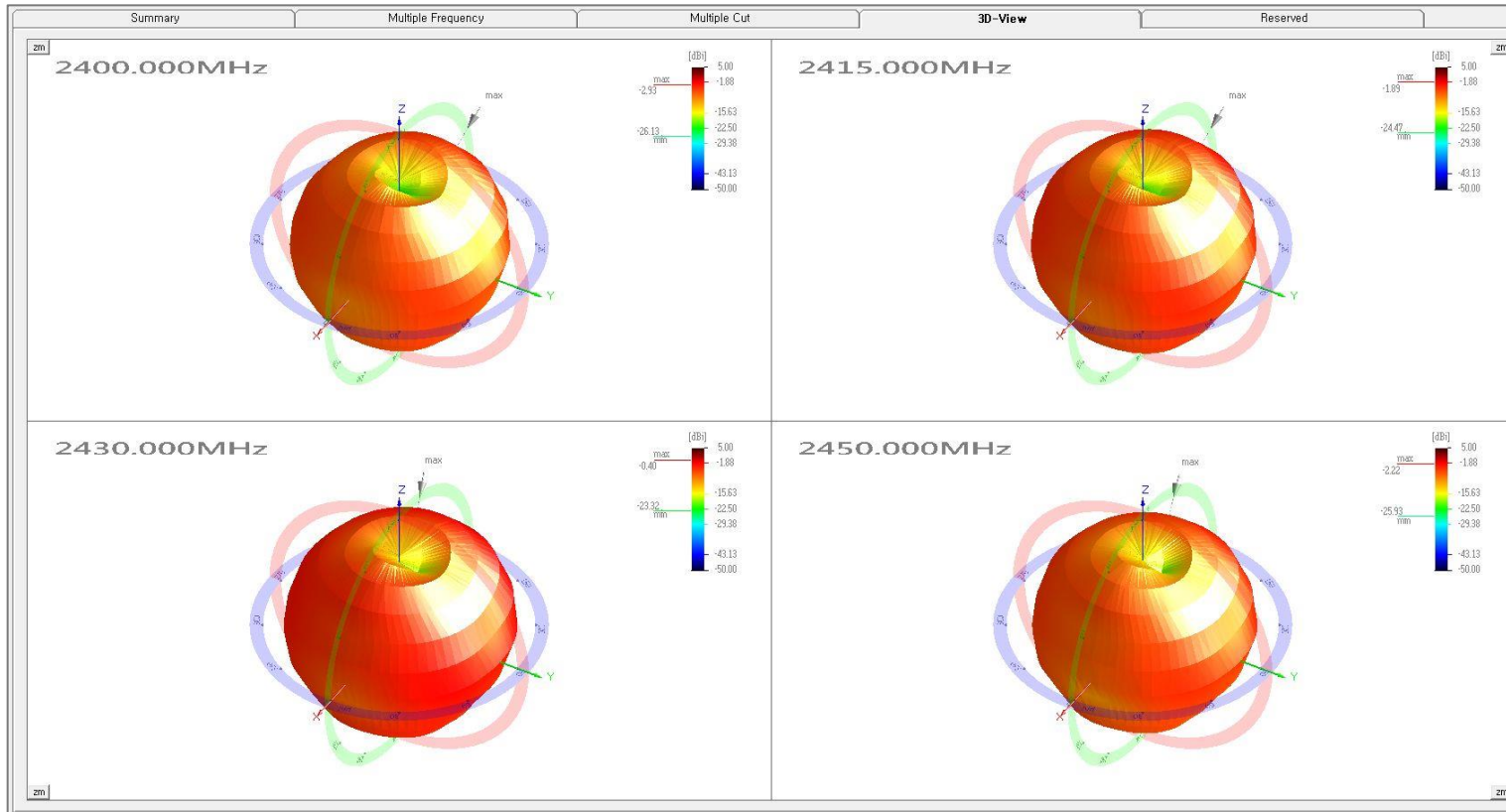
[Smith Chart & VSWR]



[3D Gain data]

Freq.[MHz]	Eff.[%]	Avg.[dBi]	Peak[dBi]
2400	22.56	-6.47	-2.93
2415	27.7	-5.57	-1.89
2430	39.08	-4.08	-0.4
2450	26.2	-5.82	-2.22
2460	29.7	-5.27	-1.57
2480	31.31	-5.04	-0.58
2485	29.36	-5.32	-0.73

3D Radiation Pattern_BT



Thank you

This message and any attachments are confidential and may be legally privileged. Any unauthorized review, use or distribution by anyone other than the intended recipient is strictly prohibited. If you are not the intended recipient, please immediately notify the sender, completely delete this documents, and destroy all copies. Your cooperation will be highly appreciated.