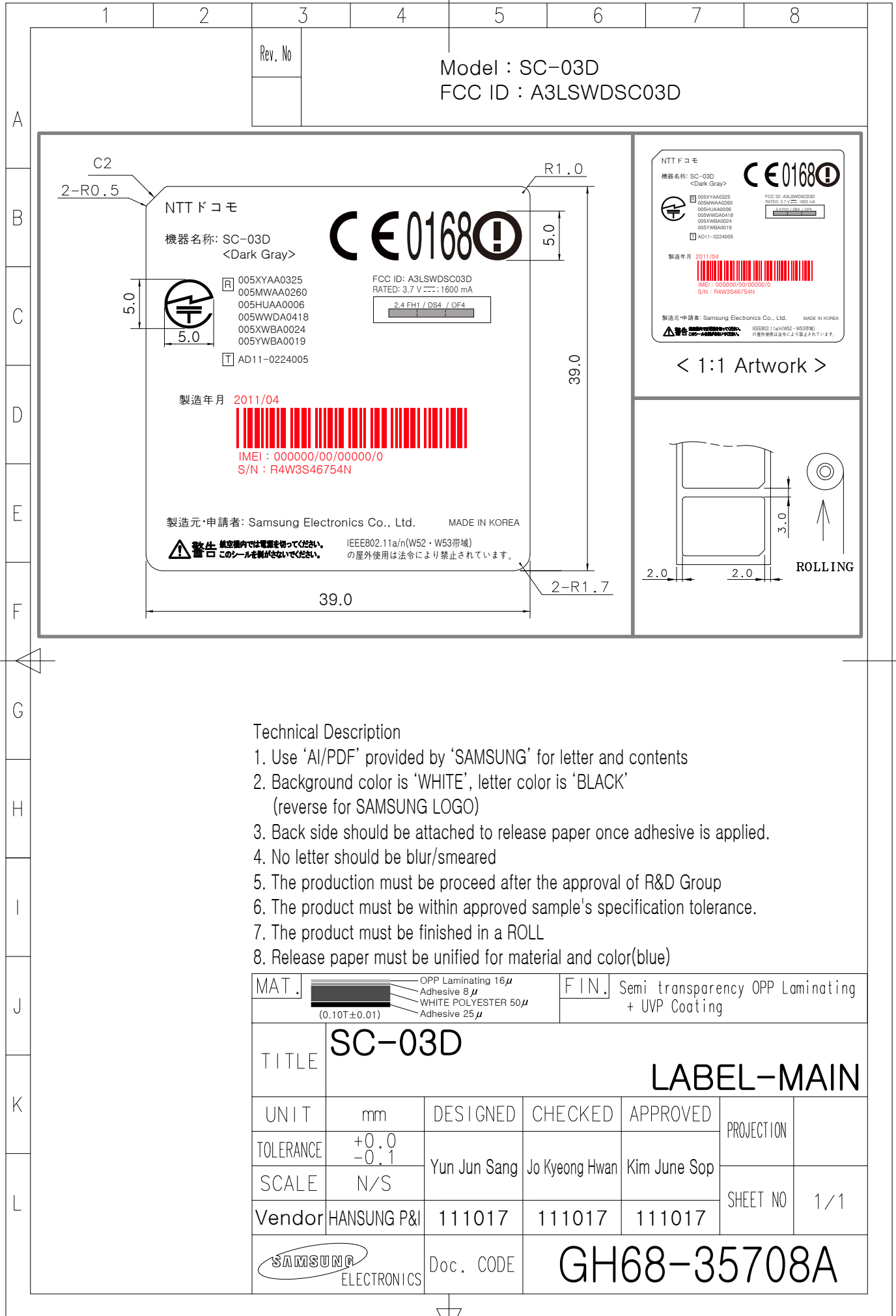


## **2. Sample Label**



Technical Description

1. Use 'AI/PDF' provided by 'SAMSUNG' for letter and contents
2. Background color is 'WHITE', letter color is 'BLACK'  
(reverse for SAMSUNG LOGO)
3. Back side should be attached to release paper once adhesive is applied.
4. No letter should be blur/smeared
5. The production must be proceed after the approval of R&D Group
6. The product must be within approved sample's specification tolerance.
7. The product must be finished in a ROLL
8. Release paper must be unified for material and color(blue)

MAT.		FIN.	Semi transparency OPP Laminating + UVP Coating			
TITLE	<b>SC-03D</b>		<b>LABEL-MAIN</b>			
UNIT	mm	DESIGNED	CHECKED	APPROVED	PROJECTION	
TOLERANCE	+0.0 -0.1	Yun Jun Sang	Jo Kyeong Hwan	Kim June Sop		
SCALE	N/S				SHEET NO	1 / 1
Vendor	HANSUNG P&I	111017	111017	111017		
		Doc. CODE	<b>GH68-35708A</b>			

### **3. FCC ID Label Location**

Model : SC-03D

FCC ID : A3LSWDSC03D



NIT F コモ  
機器名称: SC-03D  
<Dark Gray>

005XYAA0325  
005MVA0200  
005HJAA0006  
005WWD0418  
005YVGA0004  
005YVGA0019  
AD11-0224005

FCC ID: A3LSWDSC03D  
PART#: 211.222.1000.004

製造年月 2011/06

IMEI : 0000030101000000  
S/N : R4WSS46754N

製造元・申請者: Samsung Electronics Co., Ltd. MADE IN KOREA

警告 本製品は、電圧変動により動作が不安定になる場合があります。

The label is placed inside the battery compartment