



☒

C

☒

1 00

2 ABC

3 DEF

4 GHI

5 JKL

6 MNO

7 PQRS

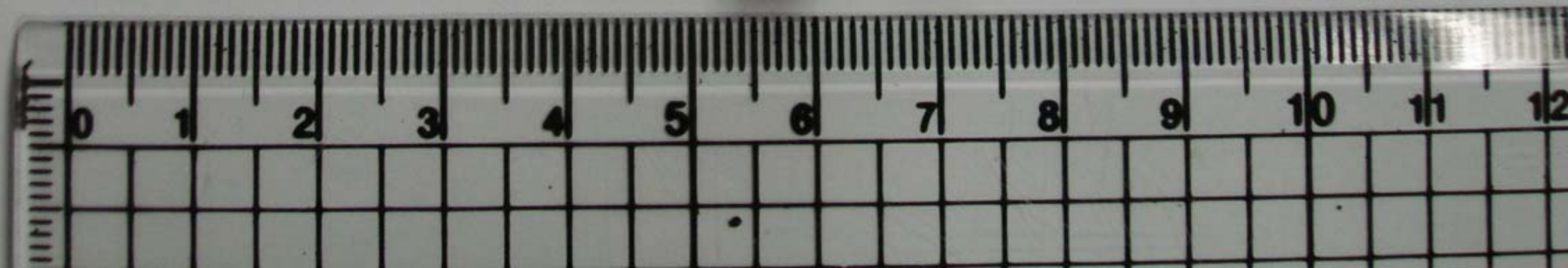
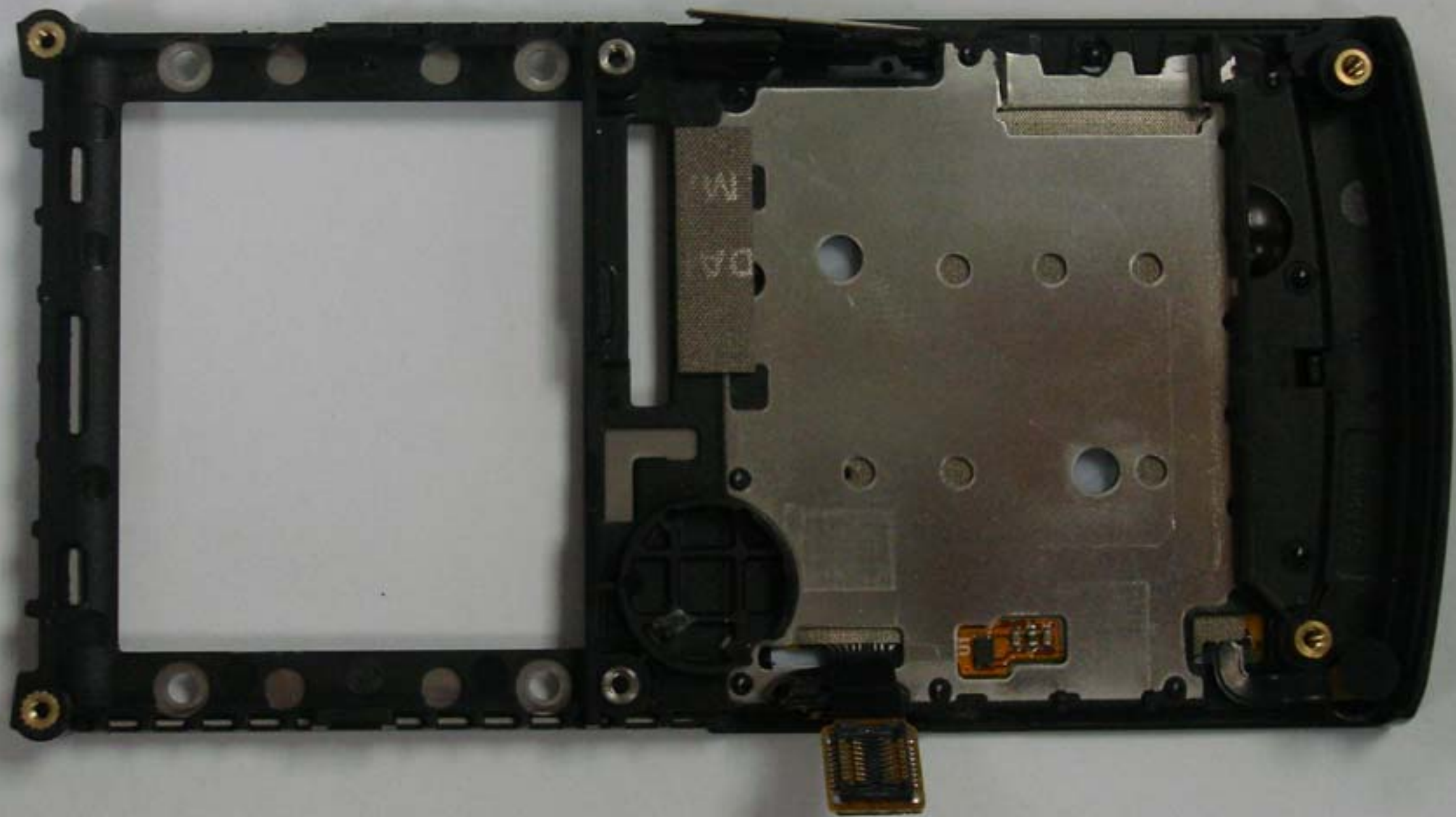
8 TUV

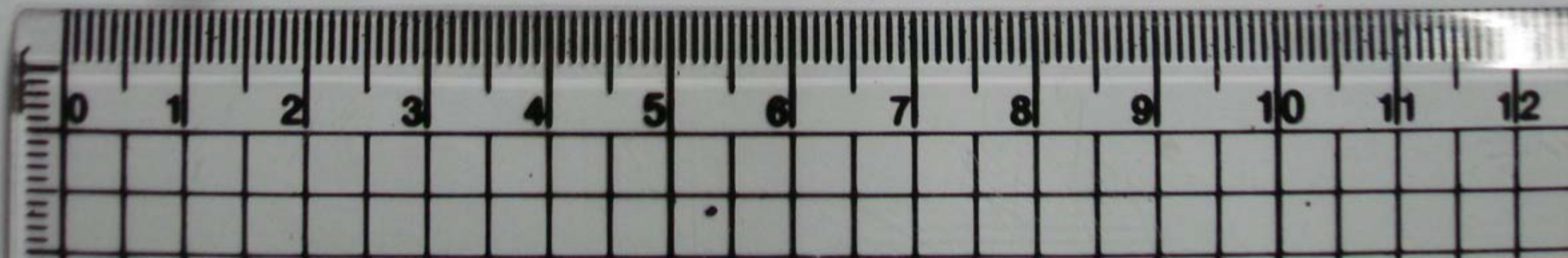
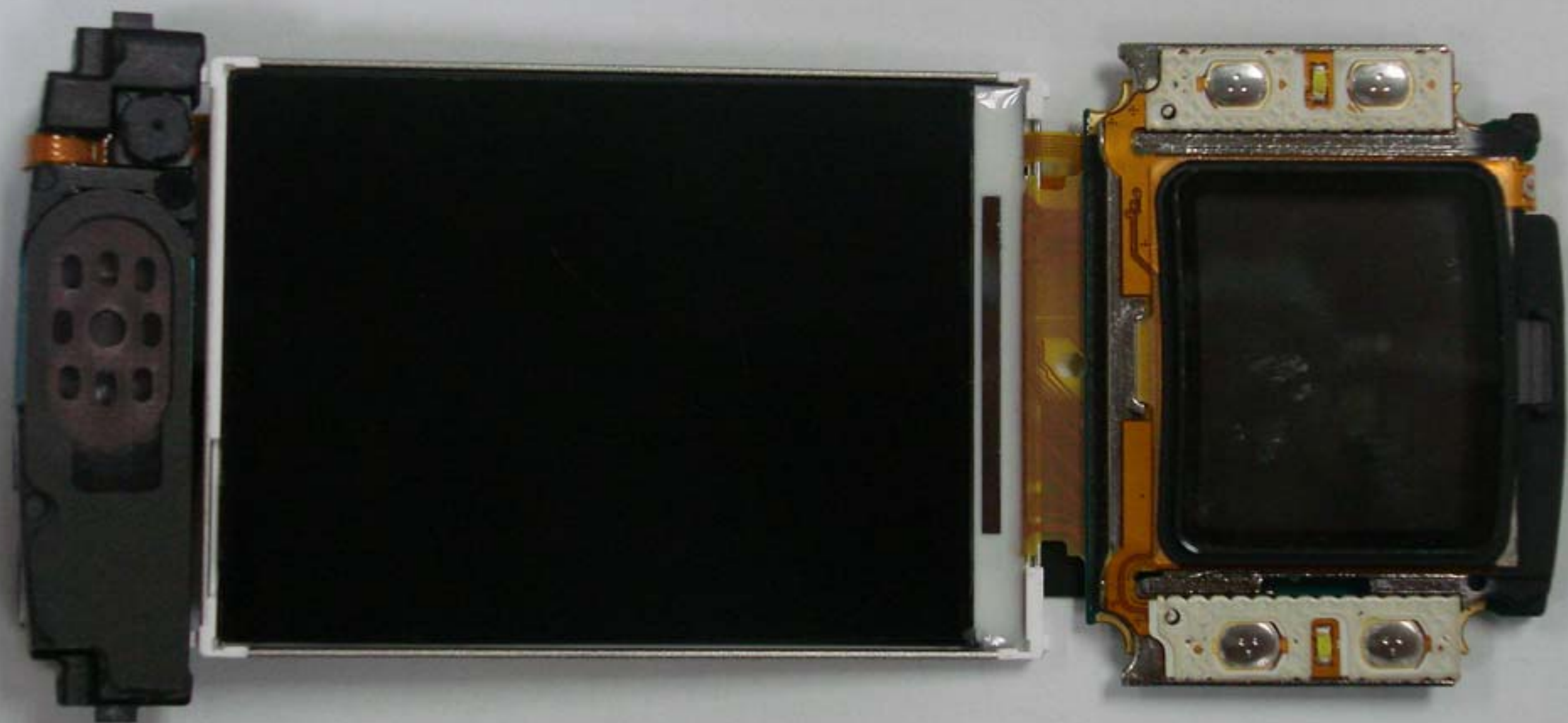
9 WXYZ

* +

0 +

5







ML

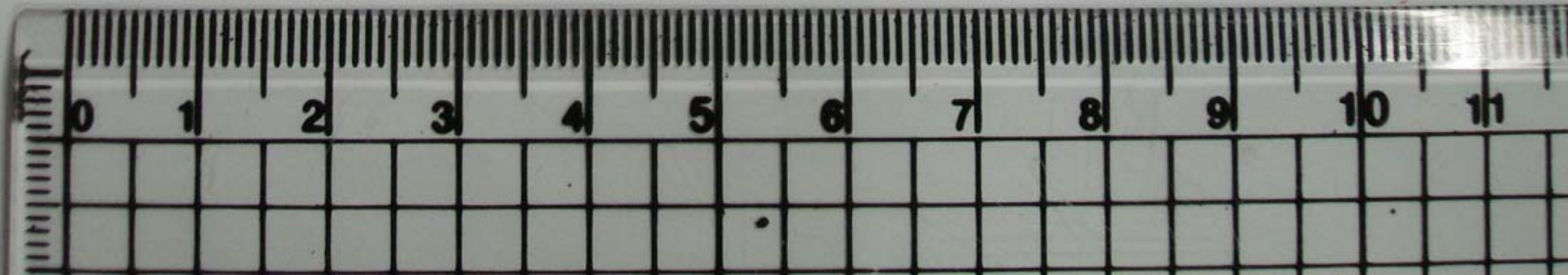
SGH-G770 CON REV0.4
7th D.C. 2007.01.02

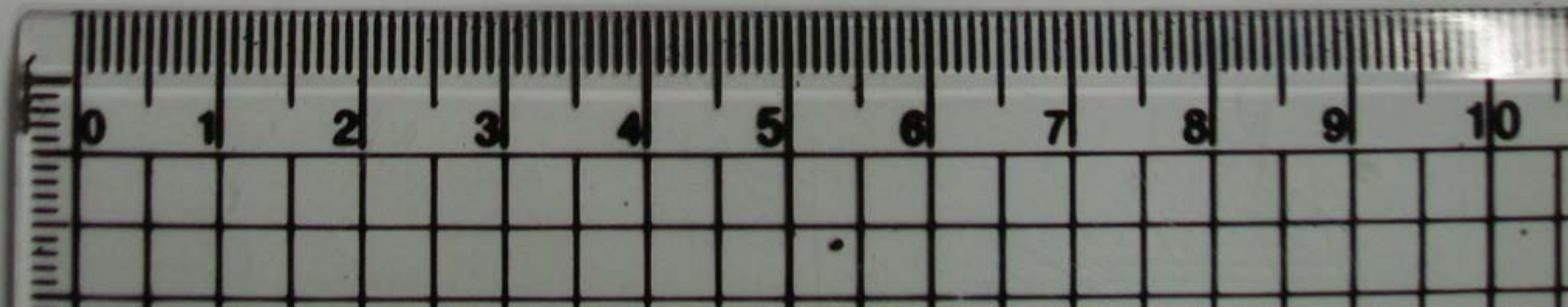
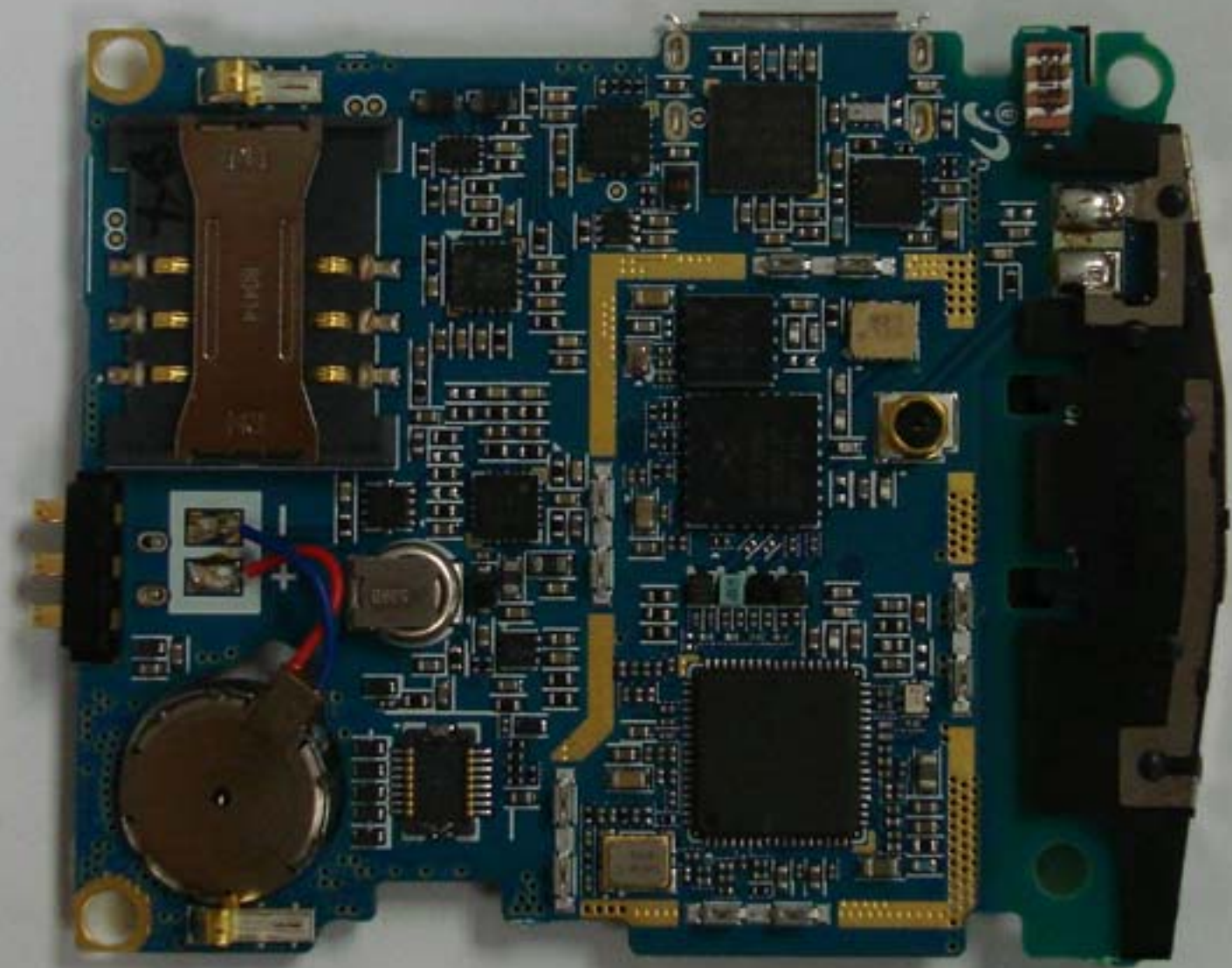
D0814©
REV03

A 0401L

REV0.1

UF24U211A REV0.1
LJ41-06635A 91Qm-54
0815 2

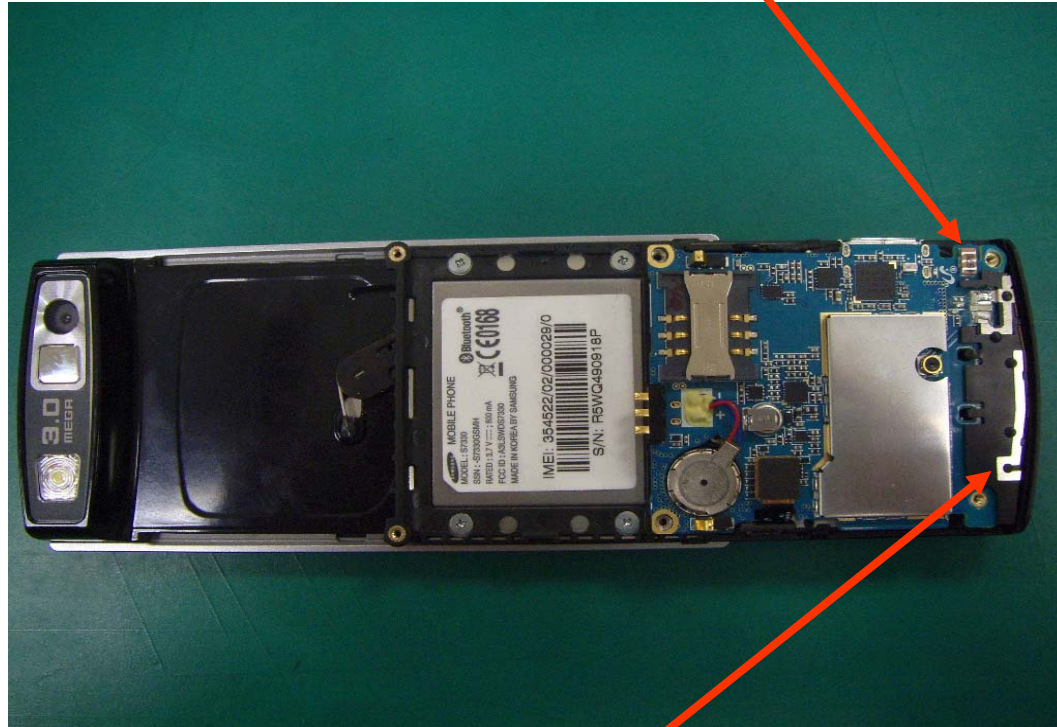






* Placement of each antenna in slide up

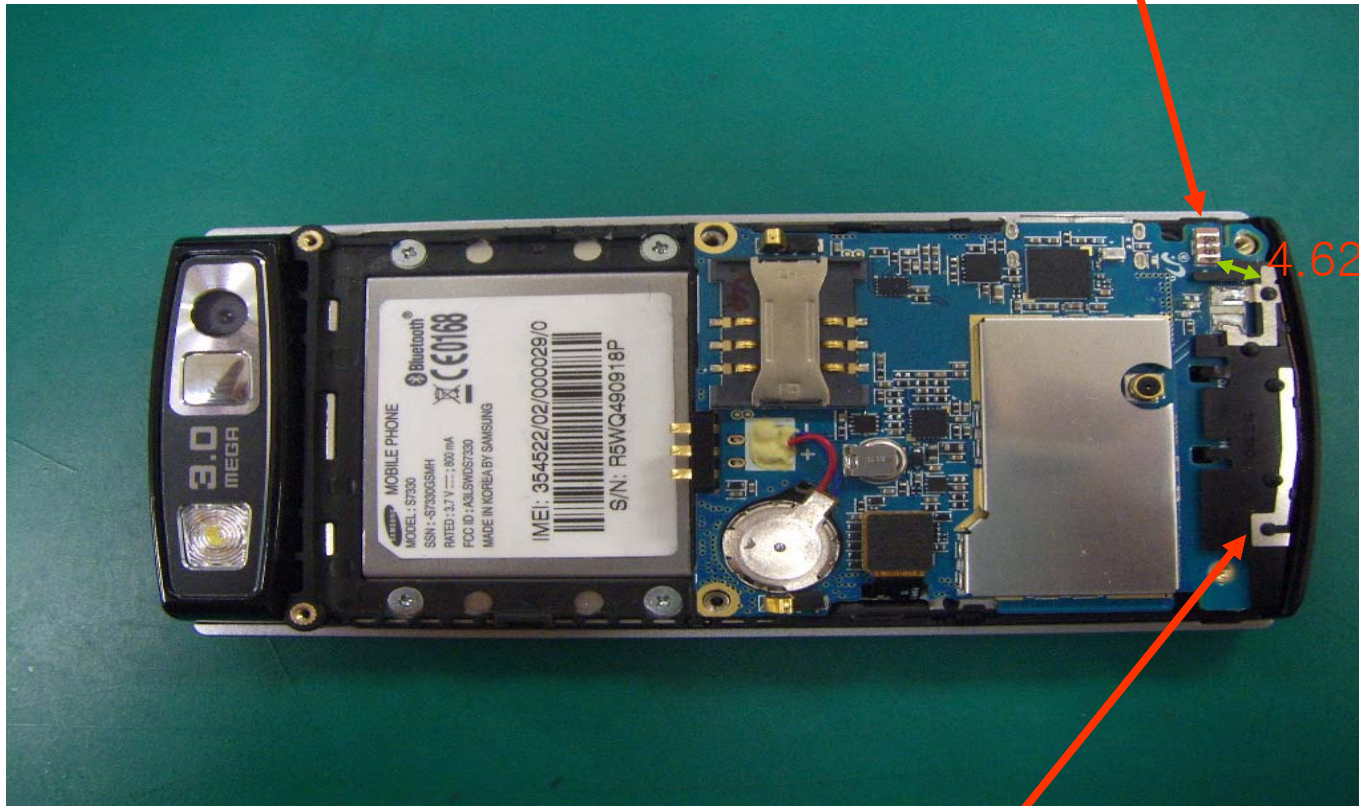
Bluetooth antenna



Main antenna

* Placement of each antenna in slide down

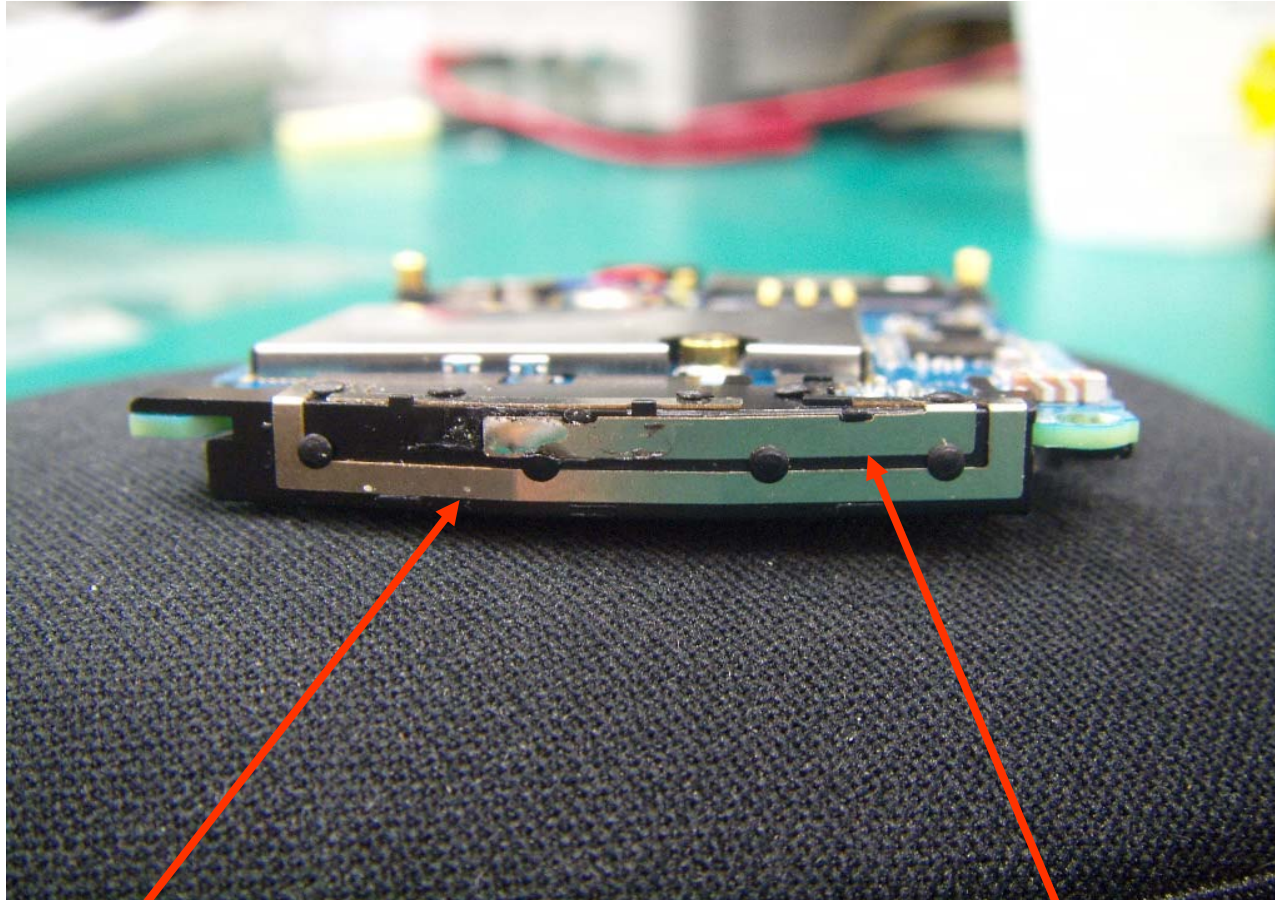
Bluetooth antenna



4.62mm

Main antenna

* Antenna pattern



GSM900

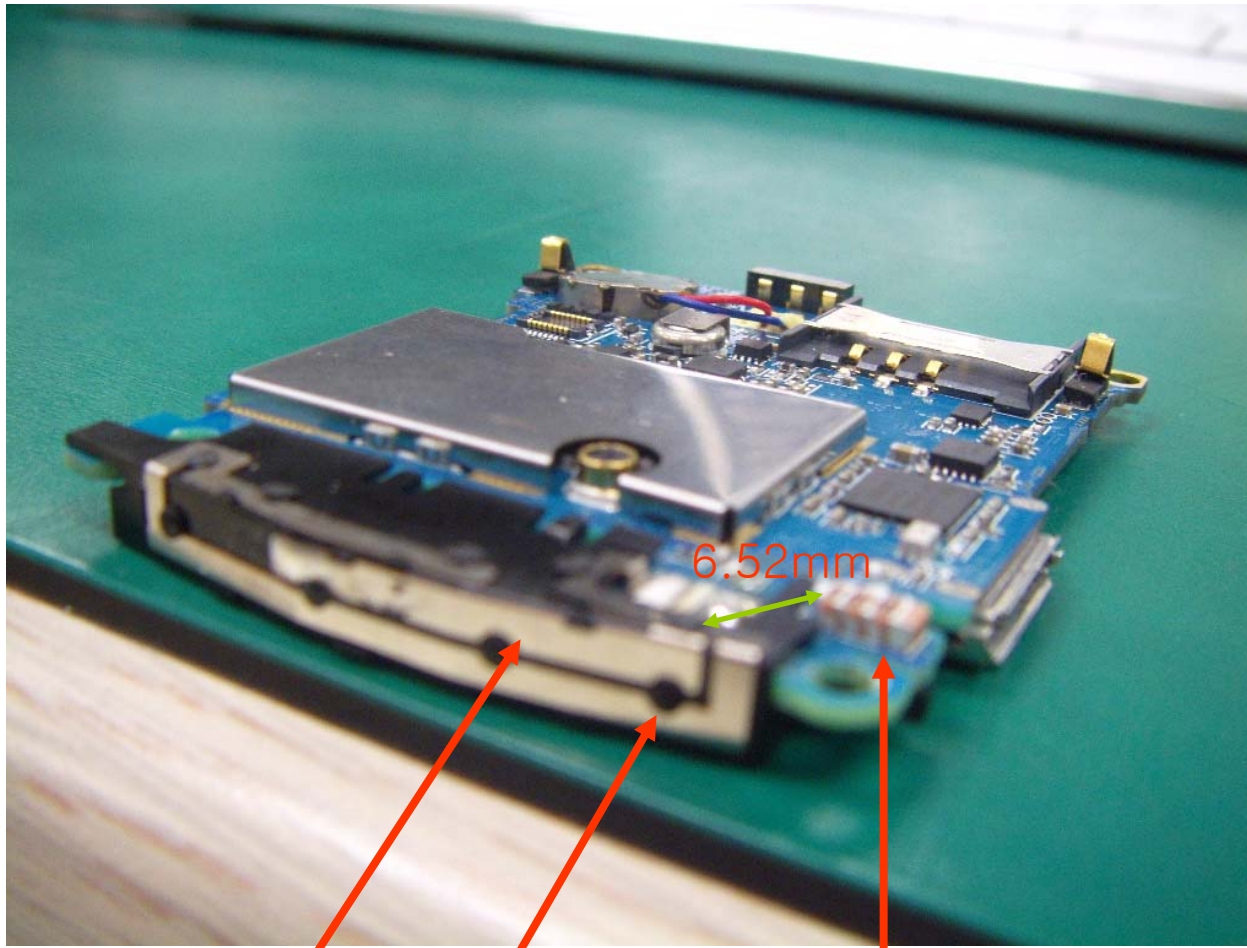
DCS1800

PCS1900

WCDMA 2.1G

* Distance between Bluetooth antenna and PCS antenna

10.8mm



PCS1900

GSM900

Bluetooth antenna

- No difference of distance between bluetooth antenna and PCS1900 antenna for each case of slide up and down, because antennas are in the same plastic all together.