



SAMSUNG



Bluetooth

SAMSUNG



	C	
1 ∅	2 ABC	3 DEF
4 GHI	5 JKL	6 MNO
7 PQRS	8 TUV	9 WXYZ
* ↑	0 +	# ↵

**SAMSUNG**





**SAMSUNG MOBILE PHONE**  
MODEL : S7330  
SSN : -S7330GSMH  
RATED : 3.7 V ; 800 mA  
FCC ID : A3LSWDS7330  
MADE IN KOREA BY SAMSUNG

**Bluetooth®**  
**CE0168**

IMEI: 354522/02/000117/3

S/N: R7WQ464386V

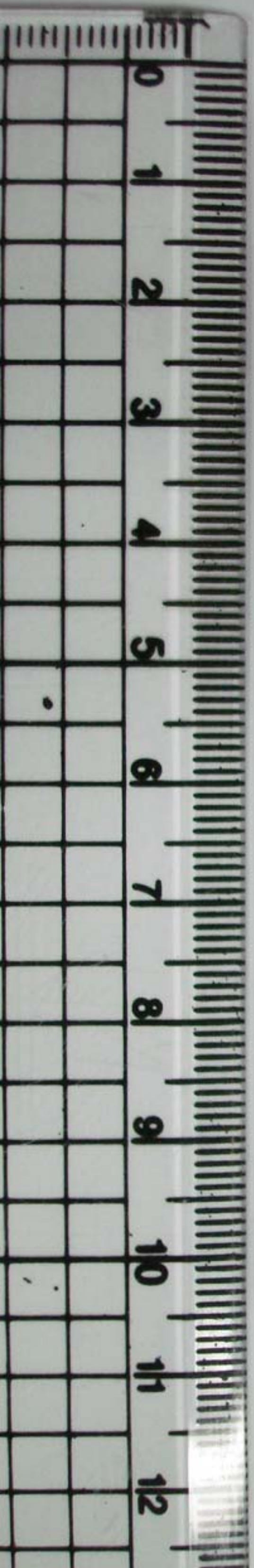


**SAMSUNG**  
**STANDARD BATTERY**

TYPE : 3.7 V Li-Ion  
MODEL : AB653039CE

SN: TH2Q303FS/4-G  
CELL MADE IN JAPAN / FINISHED IN KOREA

**SAFETY WARNINGS:**  
- PUT INTO A FIRE, HEATED,  
ON SUBJECT TO IMPACT,  
CONTACT AND CONTACT WITH WATER, OR IF  
THE BATTERY TERMINALS ARE CONNECTED  
TO A WELDER OR ANY OTHER WELDER.  
- Do not place in fire or heat.  
- Do not place in water or other liquid.  
- Do not use the product if it is damaged.  
- Do not use the product if it is swollen.  
- Do not use the product if it is leaking.  
- Do not use the product if it is hot.  
- Do not use the product if it is cold.  
- Do not use the product if it is dry.  
- Do not use the product if it is wet.  
- Do not use the product if it is dusty.  
- Do not use the product if it is oily.  
- Do not use the product if it is greasy.  
- Do not use the product if it is soiled.  
- Do not use the product if it is stained.  
- Do not use the product if it is discolored.  
- Do not use the product if it is faded.  
- Do not use the product if it is scratched.  
- Do not use the product if it is cracked.  
- Do not use the product if it is broken.  
- Do not use the product if it is bent.  
- Do not use the product if it is twisted.  
- Do not use the product if it is deformed.  
- Do not use the product if it is distorted.  
- Do not use the product if it is misshapen.  
- Do not use the product if it is irregular.  
- Do not use the product if it is uneven.  
- Do not use the product if it is lumpy.  
- Do not use the product if it is bumpy.  
- Do not use the product if it is lumpy.  
- Do not use the product if it is bumpy.



SAMSUNG

