

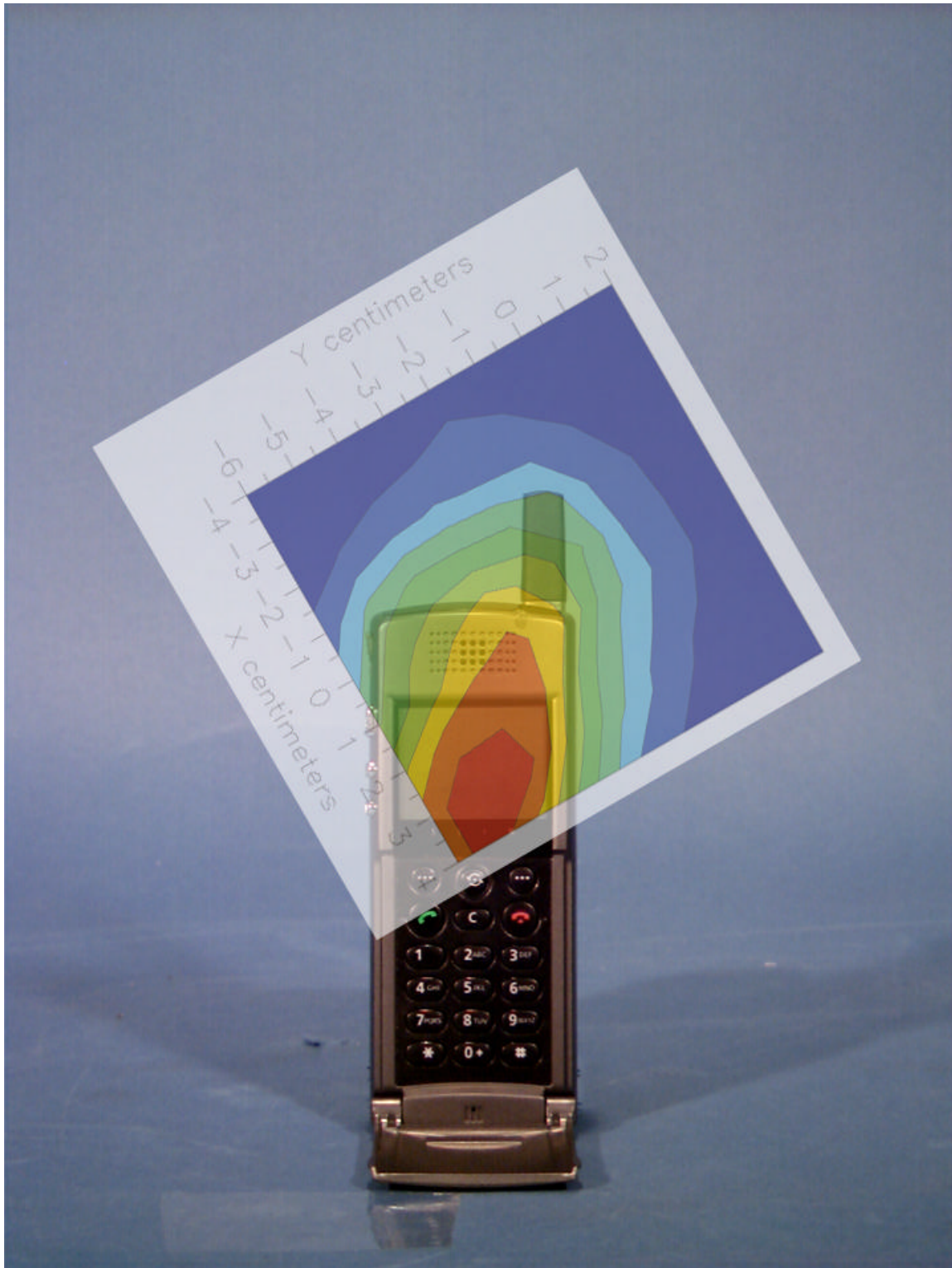
## **ATTACHMENT O – SAR TEST DATA**

---

# Peak SAR Location

---

## Head SAR



File : c:/idx3/SYSTEM/SARMEAS3/data/Normal/01030110\_ZOOM.VLT  
Start : 1-Mar-101 02:29:09 pm End : 1-Mar-101 02:38:41 pm

Radio Type : SAMSUNG  
Model Number : STH-N270  
Serial Number : 6D  
Frequency : 824.04 MHz  
Peak Trans. Pwr : 0.400 W  
Start Trans. Pwr : 0.400 W  
Antenna Type : Helical  
Antenna Posn. : Internal  
Phantom Type : Head  
Phantom Posn. : Left Ear  
Scan Type : ZOOM/SAR  
Probe Name : PCTEST  
Field Type : E Field  
Orientation : 0 Degrees

Mixture Type = Brain  
Mixture Dielectric Constant = 41.500  
Mixture Conductivity = 0.900

Comment :  
SAMSUNG DUAL-MODE PHONE - AMPS MODE  
CHAN 0991 Conducted 26.0 dBm  
SAMSUNG DUAL-MODE PHONE

Robot : PCTEST

Probe Offset = 0.25 cm  
Sensor Factor = 0.0108  
Conversion Factor = 0.788

PCTEST Amplifier Channel Settings : 0.166 0.135 0.132

Max Location : X = 2.500, Y = -5.000, Z = 0.000 (cm) Value = 17.261

Measured Values (volts) =  
1.742E-002 1.384E-002 1.209E-002 1.079E-002 9.915E-003 9.041E-003  
8.205E-003 7.088E-003 6.033E-003 4.799E-003 3.631E-003 2.694E-003  
1.955E-003 1.606E-003 1.500E-003 1.730E-003 2.137E-003 2.514E-003  
2.747E-003 2.622E-003 1.928E-003

Calc. Voltage @ Surface (Vs) = 0.0209

Voltage @ 1.00 cm (Vt) = 0.0108

Ave. Voltage (Vs+Vt)/2 = 0.0159

Ave. SAR over 1 g (mW/g) = 1.1574

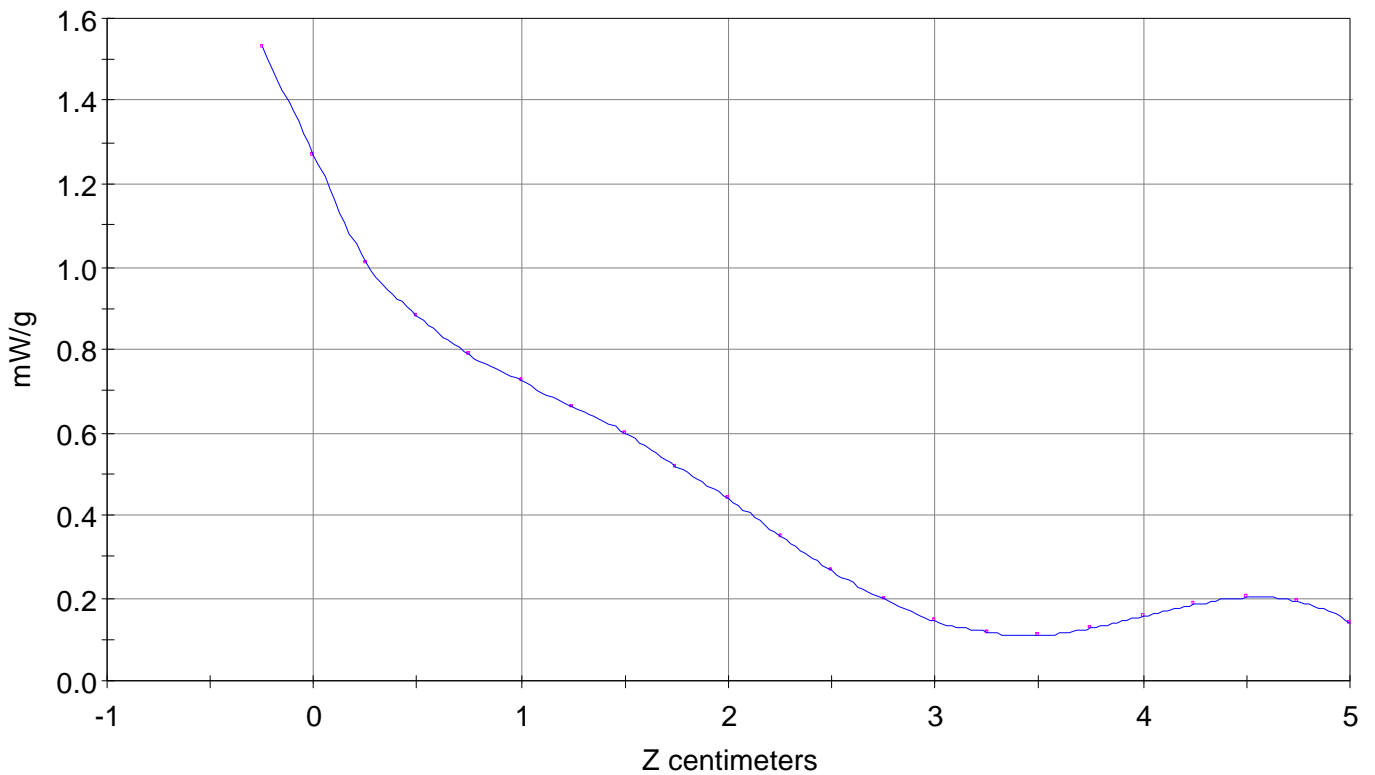
### SAR Scan

File : 01030110\_ZOOM

Start : 1-Mar-101 02:29:09 pm End : 1-Mar-101 02:38:41 pm

SAMSUNG/STH-N270/6D;824.04MHz;W;Helical/Internal;

Head/Left Ear;ZOOM/SAR;PCTEST/E Field/0 DegreesBrain/41.500/0.900

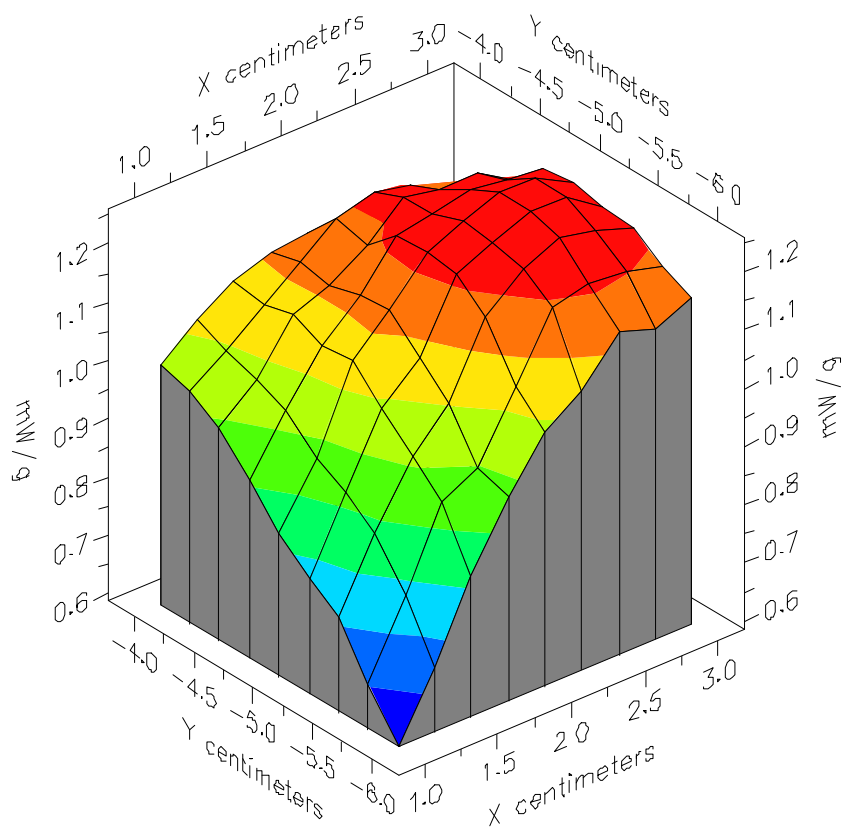


File : 01030110\_ZOOM

Start : 1-Mar-101 02:29:09 pm End : 1-Mar-101 02:38:41 pm

SAMSUNG/STH-N270/6D;824.04MHz;W;Helical/Internal;

Head/Left Ear;ZOOM/SAR;PCTEST/E Field/0 DegreesBrain/41.500/0.900

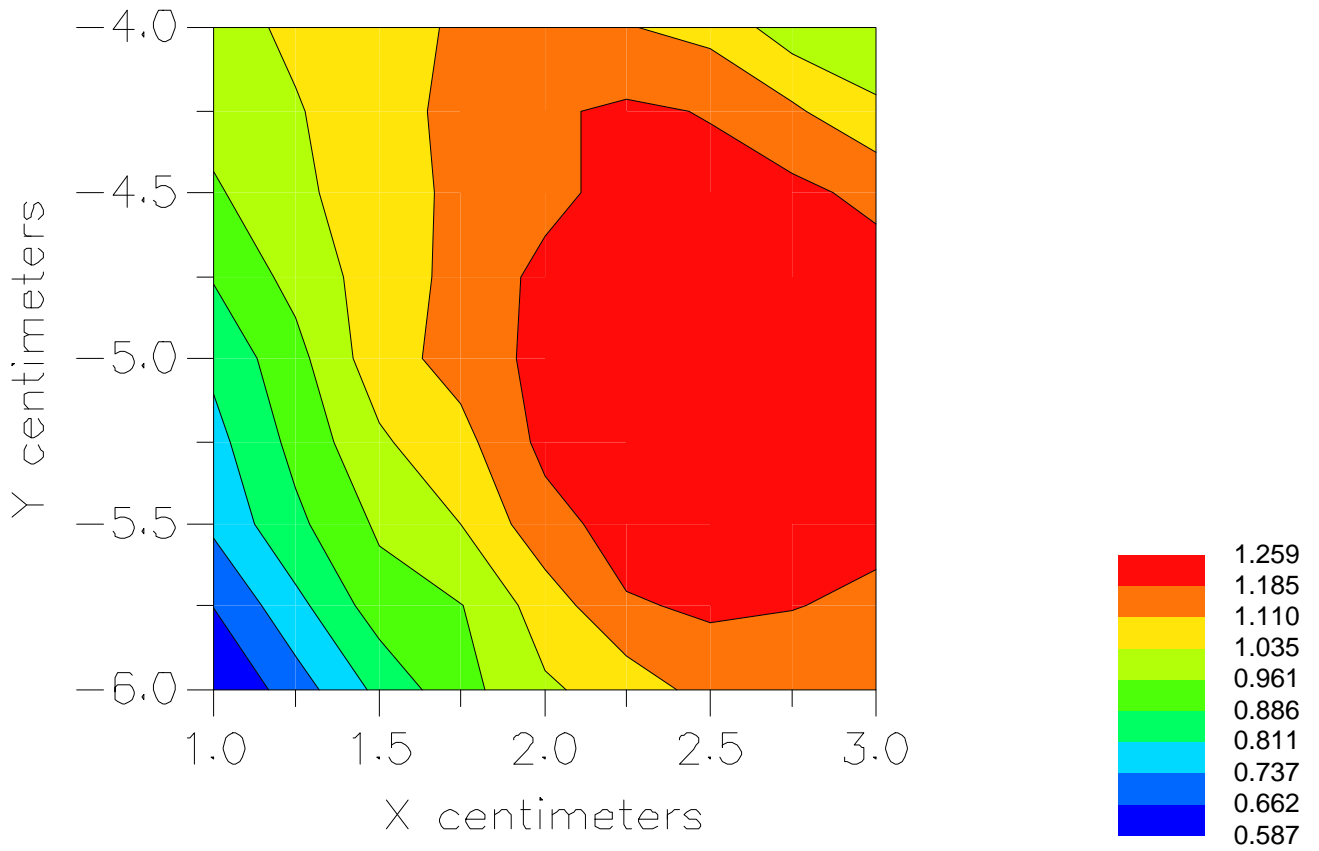


File : 01030110\_ZOOM

Start : 1-Mar-101 02:29:09 pm End : 1-Mar-101 02:38:41 pm

SAMSUNG/STH-N270/6D;824.04MHz;W;Helical/Internal;

Head/Left Ear;ZOOM/SAR;PCTEST/E Field/0 DegreesBrain/41.500/0.900



File : c:/idx3/SYSTEM/SARMEAS3/data/Normal/01022803\_ZOOM.VLT  
Start : 28-Feb-101 10:31:39 am End : 28-Feb-101 10:41:11 am

Radio Type : SAMSUNG  
Model Number : STH-N270  
Serial Number : 6D  
Frequency : 836.49 MHz  
Peak Trans. Pwr : 0.400 W  
Start Trans. Pwr : 0.400 W  
Antenna Type : Helical  
Antenna Posn. : Internal  
Phantom Type : Head  
Phantom Posn. : Left Ear  
Scan Type : ZOOM/SAR  
Probe Name : PCTEST  
Field Type : E Field  
Orientation : 0 Degrees

Mixture Type = Brain  
Mixture Dielectric Constant = 41.500  
Mixture Conductivity = 0.900

Comment :  
SAMSUNG DUAL-MODE PHONE - AMPS MODE  
CHAN 0383 Conducted 26.0 dBm  
SAMSUNG DUAL-MODE PHONE

Robot : PCTEST

Probe Offset = 0.25 cm  
Sensor Factor = 0.0108  
Conversion Factor = 0.788

PCTEST Amplifier Channel Settings : 0.166 0.135 0.132

Max Location : X = 2.250, Y = -5.000, Z = 0.000 (cm) Value = 11.503

Measured Values (volts) =  
1.104E-002 8.591E-003 7.377E-003 6.554E-003 5.945E-003 5.407E-003  
4.927E-003 4.397E-003 3.875E-003 3.193E-003 2.497E-003 1.890E-003  
1.383E-003 1.055E-003 9.145E-004 9.462E-004 1.103E-003 1.337E-003  
1.504E-003 1.552E-003 1.349E-003

Calc. Voltage @ Surface (Vs) = 0.0135

Voltage @ 1.00 cm (Vt) = 0.0066

Ave. Voltage (Vs+Vt)/2 = 0.0100

Ave. SAR over 1 g (mW/g) = 0.7321

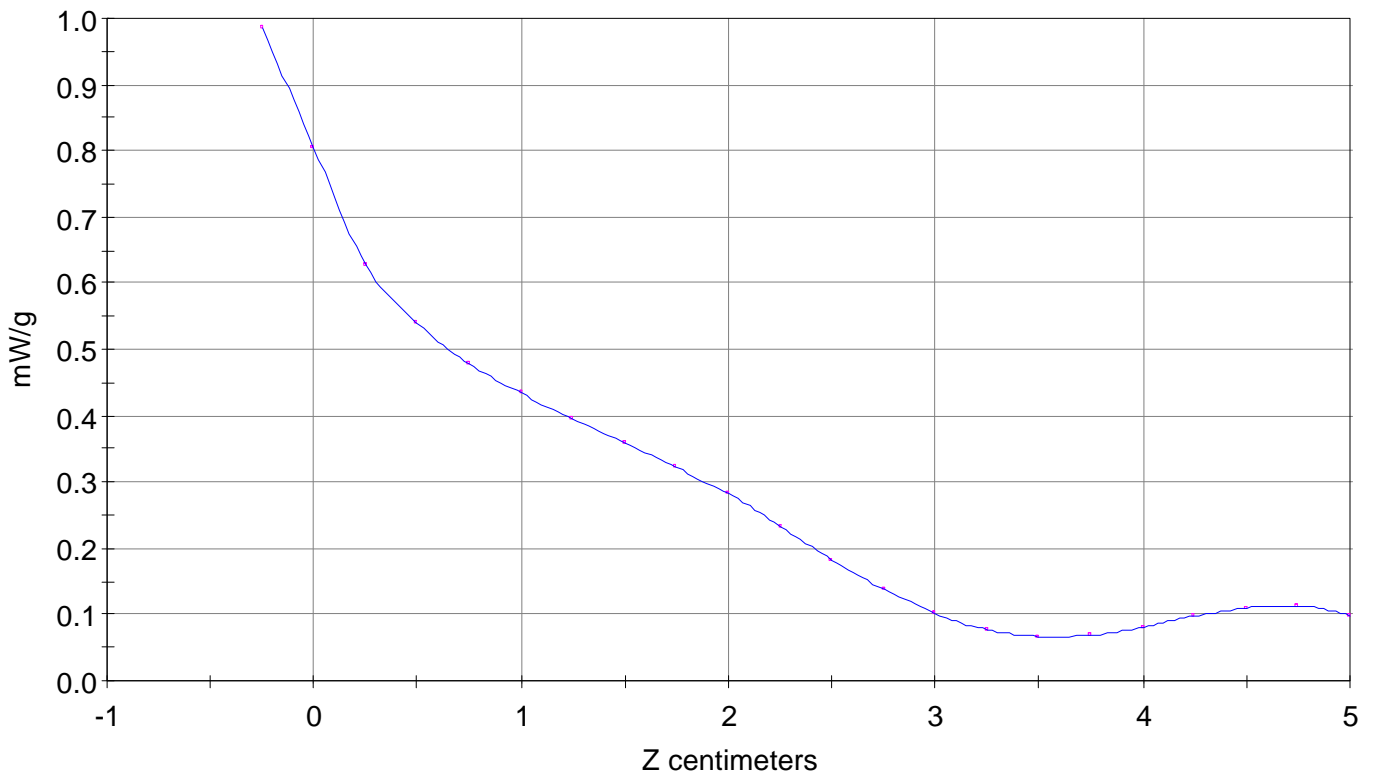
# SAR Scan

File : 01022803\_ZOOM

Start : 28-Feb-101 10:31:39 am End : 28-Feb-101 10:41:11 am

SAMSUNG/STH-N270/6D;836.49MHz;W;Helical/Internal;

Head/Left Ear;ZOOM/SAR;PCTEST/E Field/0 DegreesBrain/41.500/0.900

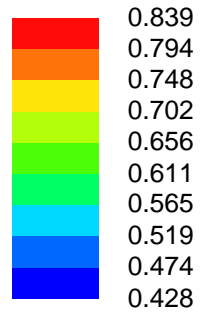
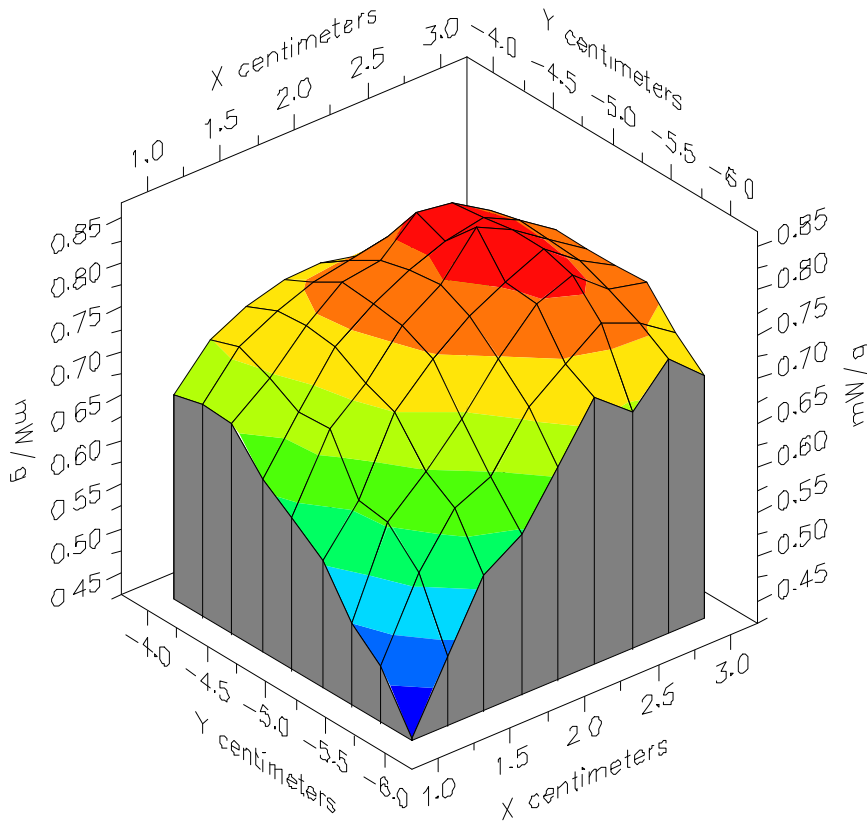


File : 01022803\_ZOOM

Start : 28-Feb-101 10:31:39 am End : 28-Feb-101 10:41:11 am

SAMSUNG/STH-N270/6D;836.49MHz;W;Helical/Internal;

Head/Left Ear;ZOOM/SAR;PCTEST/E Field/0 DegreesBrain/41.500/0.900

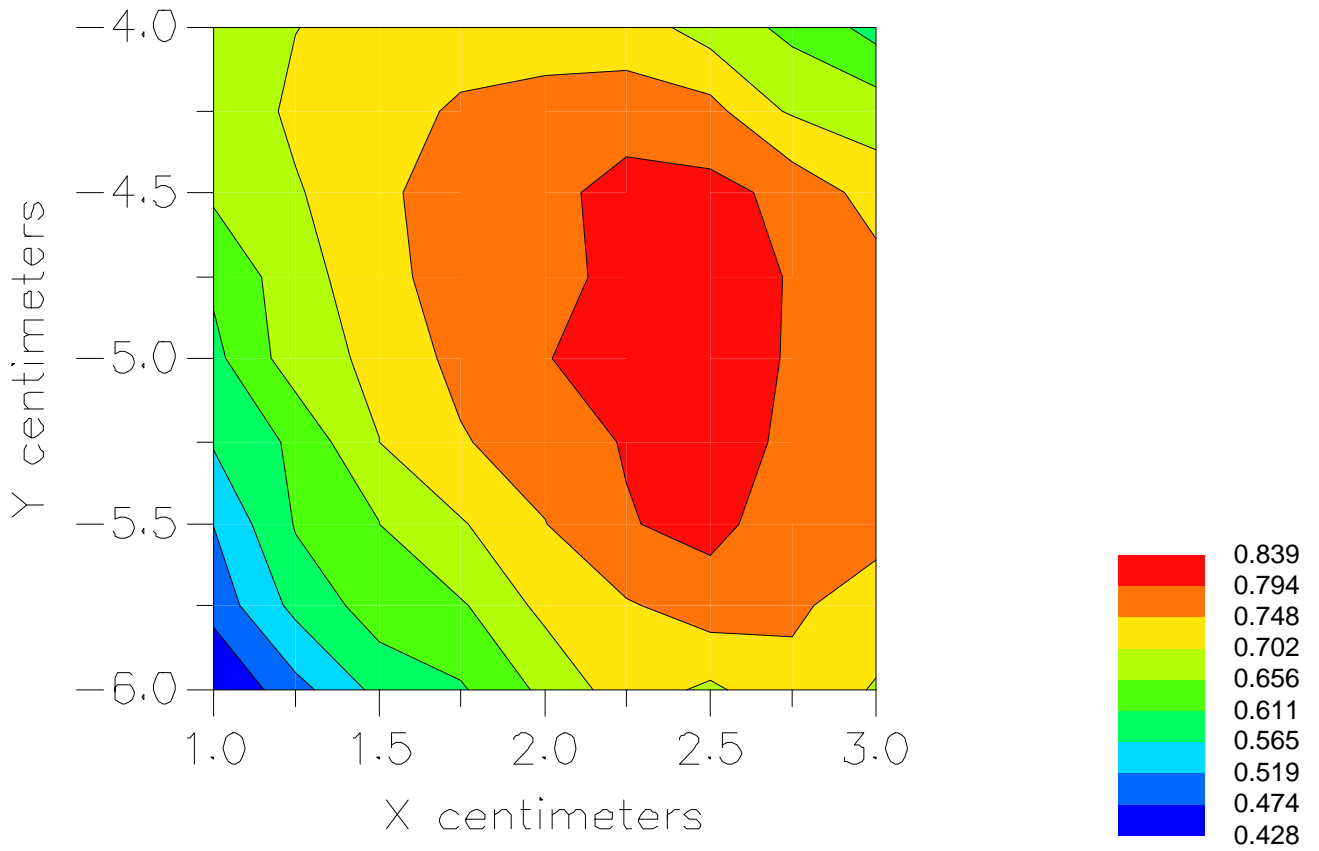


File : 01022803\_ZOOM

Start : 28-Feb-101 10:31:39 am End : 28-Feb-101 10:41:11 am

SAMSUNG/STH-N270/6D;836.49MHz;W;Helical/Internal;

Head/Left Ear;ZOOM/SAR;PCTEST/E Field/0 DegreesBrain/41.500/0.900



File : c:/idx3/SYSTEM/SARMEAS3/data/Normal/01030111\_ZOOM.VLT  
Start : 1-Mar-101 02:53:52 pm End : 1-Mar-101 03:03:26 pm

Radio Type : SAMSUNG  
Model Number : STH-N270  
Serial Number : 6D  
Frequency : 848.97 MHz  
Peak Trans. Pwr : 0.400 W  
Start Trans. Pwr : 0.400 W  
Antenna Type : Helical  
Antenna Posn. : Internal  
Phantom Type : Head  
Phantom Posn. : Left Ear  
Scan Type : ZOOM/SAR  
Probe Name : PCTEST  
Field Type : E Field  
Orientation : 0 Degrees

Mixture Type = Brain  
Mixture Dielectric Constant = 41.500  
Mixture Conductivity = 0.900

Comment :  
SAMSUNG DUAL-MODE PHONE - AMPS MODE  
CHAN 0799 Conducted 26.0 dBm  
SAMSUNG DUAL-MODE PHONE

Robot : PCTEST

Probe Offset = 0.25 cm  
Sensor Factor = 0.0108  
Conversion Factor = 0.788

PCTEST Amplifier Channel Settings : 0.166 0.135 0.132

Max Location : X = 2.500, Y = -5.000, Z = 0.000 (cm) Value = 22.750

Measured Values (volts) =  
2.238E-002 1.761E-002 1.539E-002 1.365E-002 1.268E-002 1.148E-002  
1.037E-002 9.169E-003 7.881E-003 6.346E-003 4.836E-003 3.640E-003  
2.631E-003 2.086E-003 1.920E-003 2.147E-003 2.664E-003 3.187E-003  
3.497E-003 3.380E-003 2.513E-003

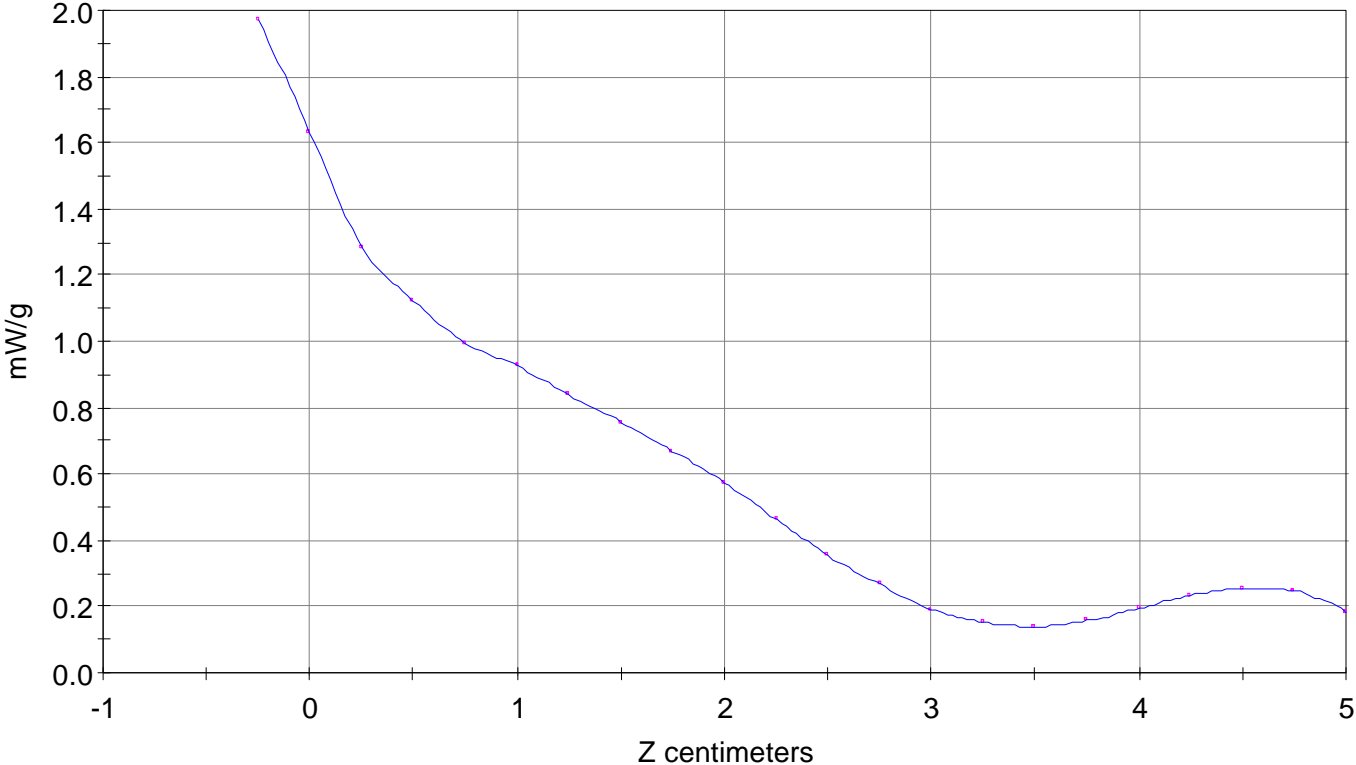
Calc. Voltage @ Surface (Vs) = 0.0270

Voltage @ 1.00 cm (Vt) = 0.0137

Ave. Voltage (Vs+Vt)/2 = 0.0203

Ave. SAR over 1 g (mW/g) = 1.4842

SAR Scan  
File : 01030111\_ZOOM  
Start : 1-Mar-101 02:53:52 pm End : 1-Mar-101 03:03:26 pm  
SAMSUNG/STH-N270/6D;848.97MHz;W;Helical/Internal;  
Head/Left Ear;ZOOM/SAR;PCTEST/E Field/0 DegreesBrain/41.500/0.900

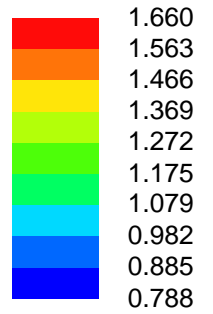
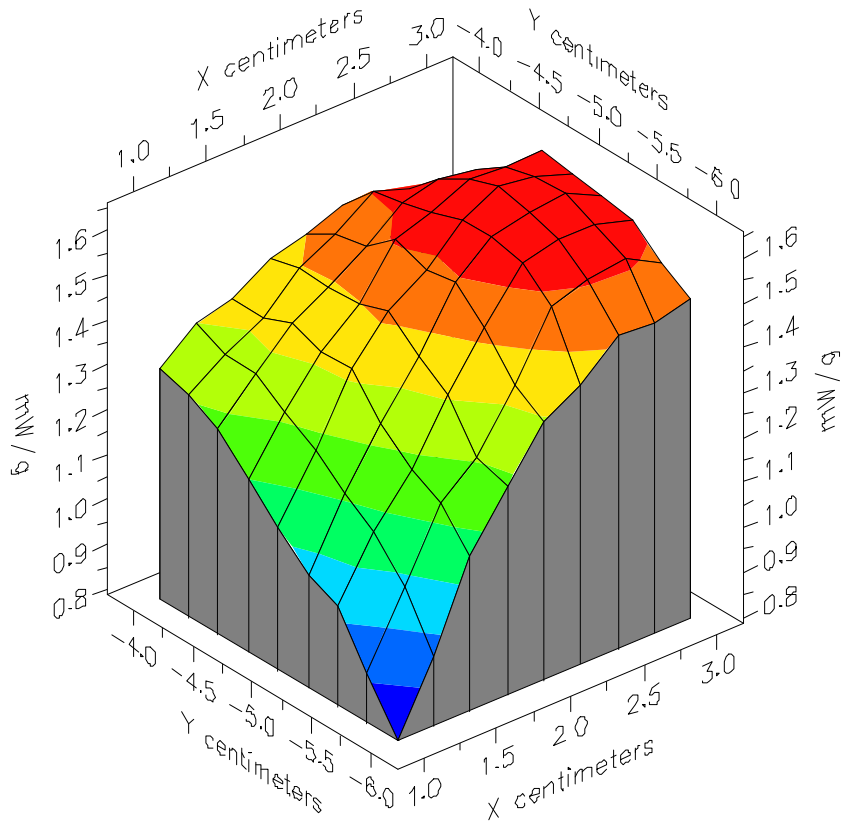


File : 01030111\_ZOOM

Start : 1-Mar-101 02:53:52 pm End : 1-Mar-101 03:03:26 pm

SAMSUNG/STH-N270/6D;848.97MHz;W;Helical/Internal;

Head/Left Ear;ZOOM/SAR;PCTEST/E Field/0 DegreesBrain/41.500/0.900

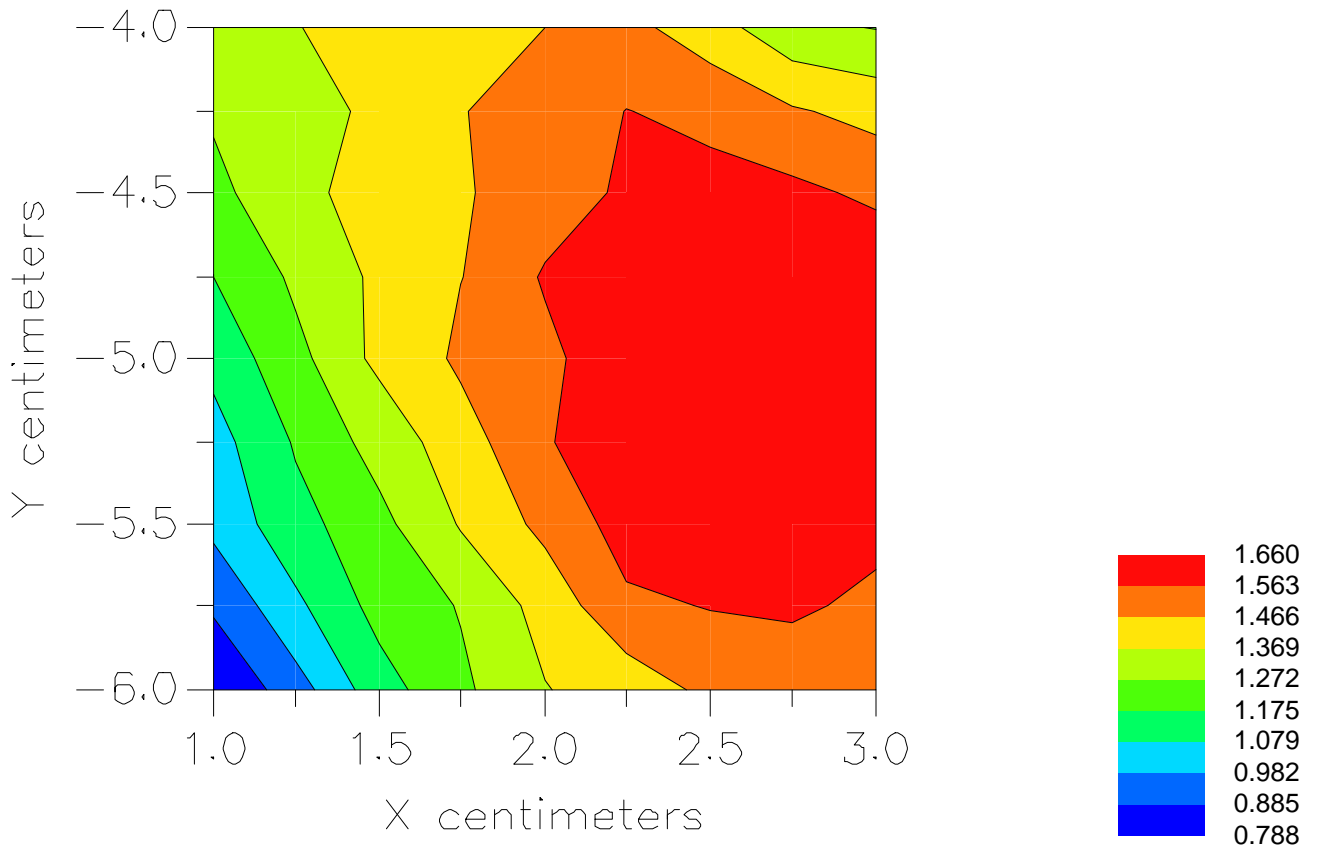


File : 01030111\_ZOOM

Start : 1-Mar-101 02:53:52 pm End : 1-Mar-101 03:03:26 pm

SAMSUNG/STH-N270/6D;848.97MHz;W;Helical/Internal;

Head/Left Ear;ZOOM/SAR;PCTEST/E Field/0 DegreesBrain/41.500/0.900



File : c:/idx3/SYSTEM/SARMEAS3/data/Normal/01022813\_ZOOM.VLT  
Start : 28-Feb-101 03:44:10 pm End : 28-Feb-101 03:50:44 pm

Radio Type : SAMSUNG  
Model Number : STH-N270  
Serial Number : 6D  
Frequency : 824.04 MHz  
Peak Trans. Pwr : 0.500 W  
Start Trans. Pwr : 0.500 W  
Antenna Type : Helical  
Antenna Posn. : Internal  
Phantom Type : Head  
Phantom Posn. : Left Ear  
Scan Type : ZOOM/SAR  
Probe Name : PCTEST  
Field Type : E Field  
Orientation : 0 Degrees

Mixture Type = Brain  
Mixture Dielectric Constant = 41.500  
Mixture Conductivity = 0.900

Comment :  
SAMSUNG DUAL-MODE PHONE - TDMA MODE  
CHAN 0991 Conducted 27.0 dBm  
SAMSUNG DUAL-MODE PHONE

Robot : PCTEST

Probe Offset = 0.25 cm  
Sensor Factor = 0.0108  
Conversion Factor = 0.788

PCTEST Amplifier Channel Settings : 0.166 0.135 0.132

Max Location : X = 2.250, Y = -5.250, Z = 0.000 (cm) Value = 5.190

Measured Values (volts) =  
4.546E-003 4.160E-003 3.567E-003 3.114E-003 2.242E-003 2.142E-003  
2.023E-003 2.077E-003 1.668E-003 1.456E-003 1.053E-003 8.447E-004  
3.048E-004 4.588E-004 3.053E-004 4.779E-004 5.741E-004 4.293E-004  
7.951E-004 4.113E-004 5.272E-004

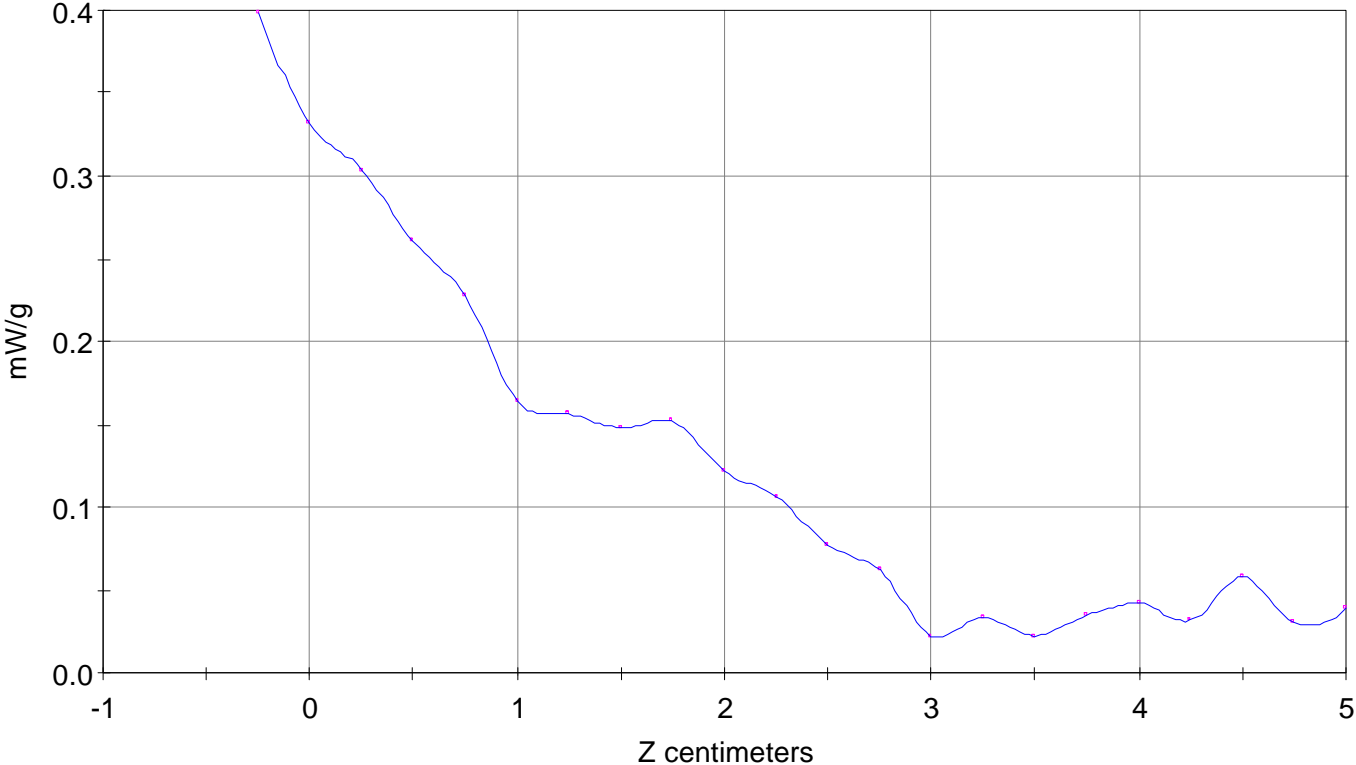
Calc. Voltage @ Surface (Vs) = 0.0055

Voltage @ 1.00 cm (Vt) = 0.0031

Ave. Voltage (Vs+Vt)/2 = 0.0043

Ave. SAR over 1 g (mW/g) = 0.3129

SAR Scan  
File : 01022813\_ZOOM  
Start : 28-Feb-101 03:44:10 pm End : 28-Feb-101 03:50:44 pm  
SAMSUNG/STH-N270/6D;824.04MHz;W;Helical/Internal;  
Head/Left Ear;ZOOM/SAR;PCTEST/E Field/0 DegreesBrain/41.500/0.900

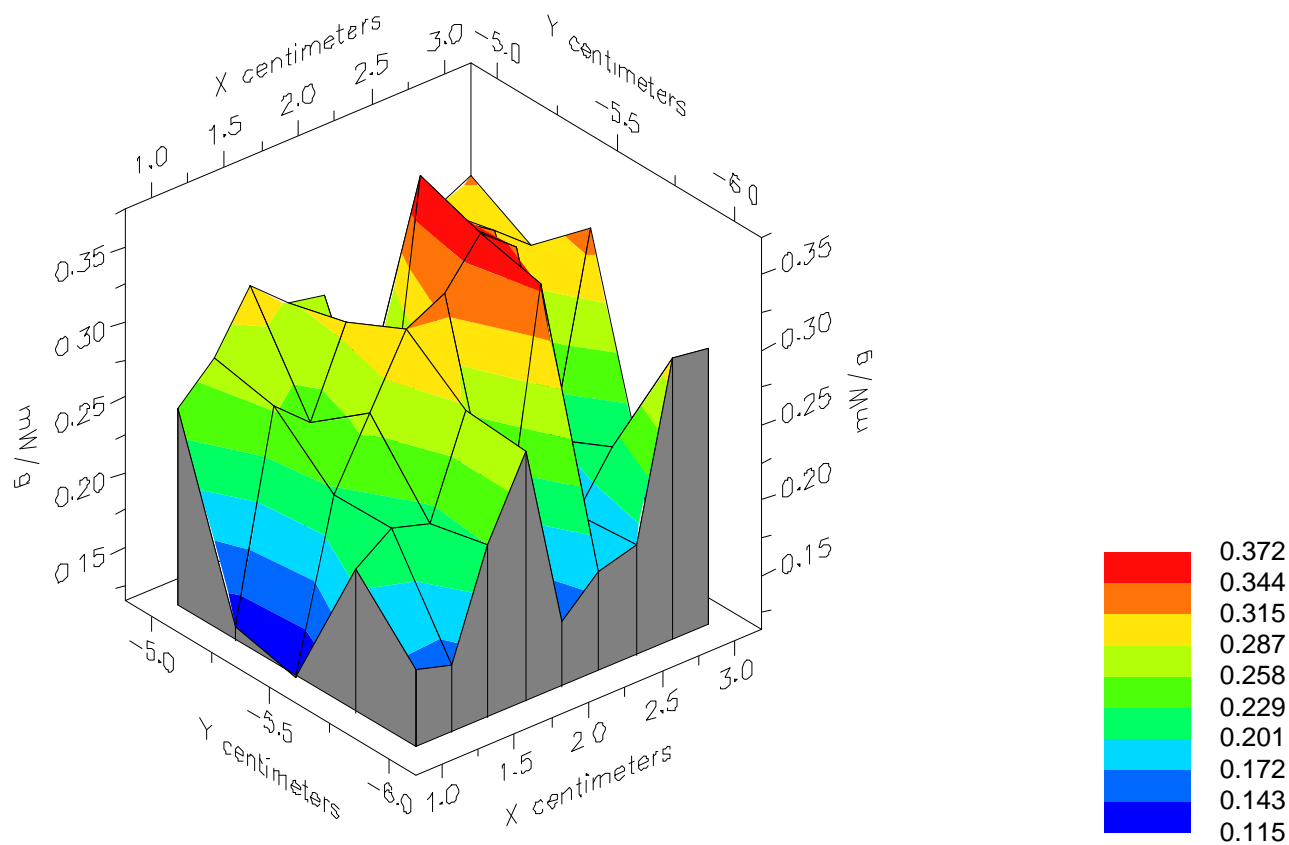


File : 01022813\_ZOOM

Start : 28-Feb-101 03:44:10 pm End : 28-Feb-101 03:50:44 pm

SAMSUNG/STH-N270/6D;824.04MHz;W;Helical/Internal;

Head/Left Ear;ZOOM/SAR;PCTEST/E Field/0 DegreesBrain/41.500/0.900

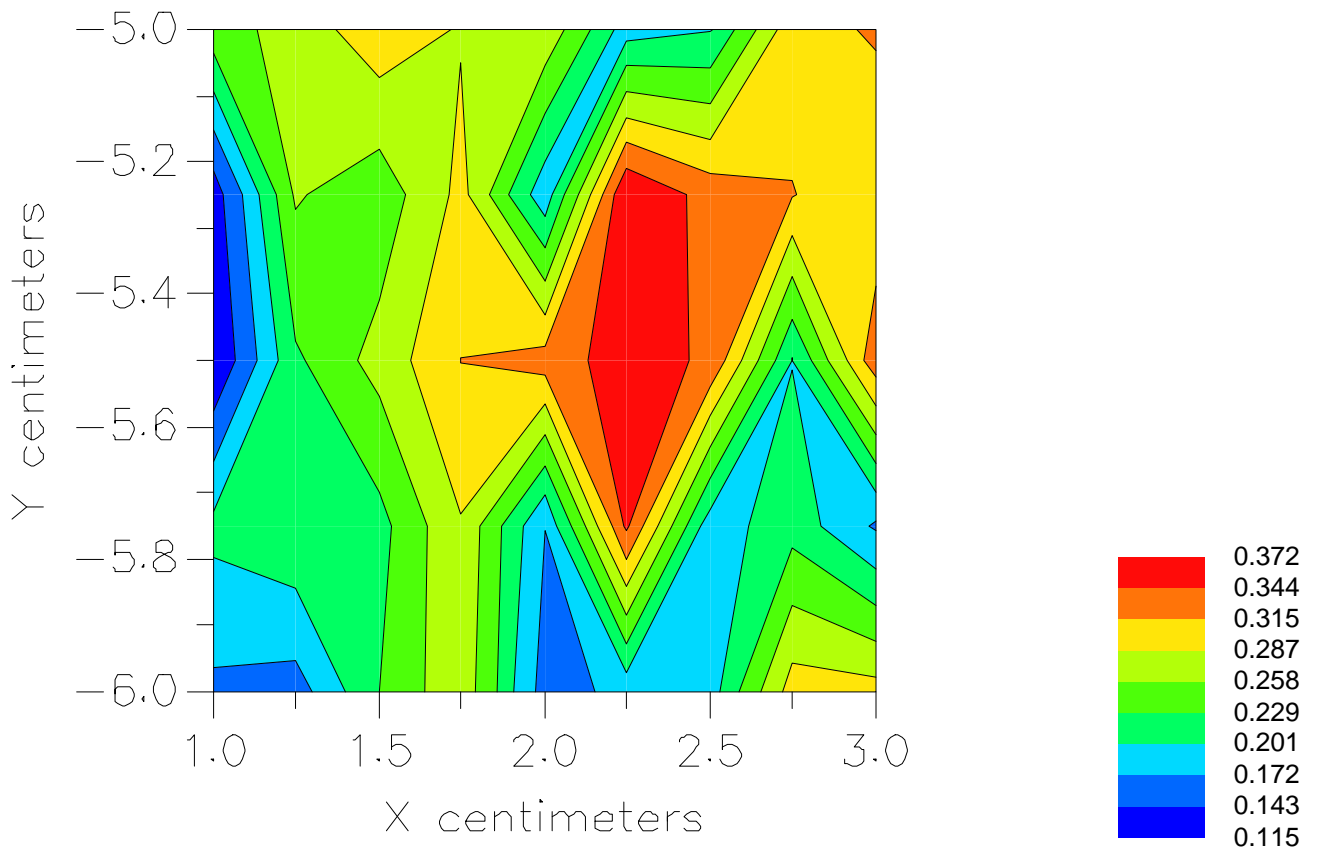


File : 01022813\_ZOOM

Start : 28-Feb-101 03:44:10 pm End : 28-Feb-101 03:50:44 pm

SAMSUNG/STH-N270/6D;824.04MHz;W;Helical/Internal;

Head/Left Ear;ZOOM/SAR;PCTEST/E Field/0 DegreesBrain/41.500/0.900



File : c:/idx3/SYSTEM/SARMEAS3/data/Normal/01022814\_ZOOM.VLT  
Start : 28-Feb-101 04:07:28 pm End : 28-Feb-101 04:18:27 pm

Radio Type : SAMSUNG  
Model Number : STH-N270  
Serial Number : 6D  
Frequency : 836.49 MHz  
Peak Trans. Pwr : 0.500 W  
Start Trans. Pwr : 0.500 W  
Antenna Type : Helical  
Antenna Posn. : Internal  
Phantom Type : Head  
Phantom Posn. : Left Ear  
Scan Type : ZOOM/SAR  
Probe Name : PCTEST  
Field Type : E Field  
Orientation : 0 Degrees

Mixture Type = Brain  
Mixture Dielectric Constant = 41.500  
Mixture Conductivity = 0.900

Comment :  
SAMSUNG DUAL-MODE PHONE - TDMA MODE  
CHAN 0383 Conducted 27.0 dBm  
SAMSUNG DUAL-MODE PHONE

Robot : PCTEST

Probe Offset = 0.25 cm  
Sensor Factor = 0.0108  
Conversion Factor = 0.788

PCTEST Amplifier Channel Settings : 0.166 0.135 0.132

Max Location : X = 2.500, Y = -5.250, Z = 0.000 (cm) Value = 5.013

Measured Values (volts) =  
4.725E-003 4.061E-003 3.069E-003 2.763E-003 2.775E-003 2.555E-003  
2.104E-003 1.789E-003 1.641E-003 9.016E-004 5.674E-004 5.501E-004  
3.020E-004 4.578E-004 4.411E-004 4.935E-004 4.091E-004 3.661E-004  
5.730E-004 7.563E-004 4.901E-004

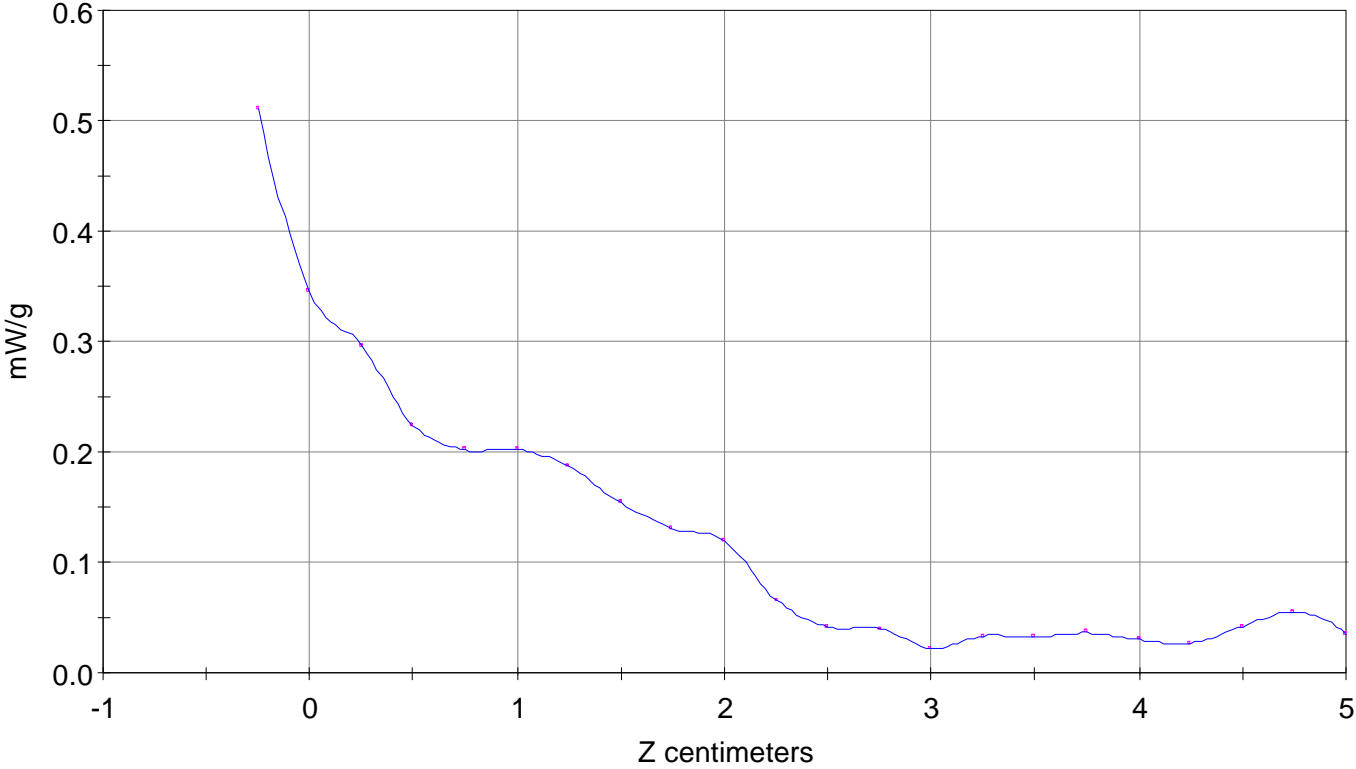
Calc. Voltage @ Surface (Vs) = 0.0070

Voltage @ 1.00 cm (Vt) = 0.0028

Ave. Voltage (Vs+Vt)/2 = 0.0049

Ave. SAR over 1 g (mW/g) = 0.3562

SAR Scan  
File : 01022814\_ZOOM  
Start : 28-Feb-101 04:07:28 pm End : 28-Feb-101 04:18:27 pm  
SAMSUNG/STH-N270/6D;836.49MHz;W;Helical/Internal;  
Head/Left Ear;ZOOM/SAR;PCTEST/E Field/0 DegreesBrain/41.500/0.900

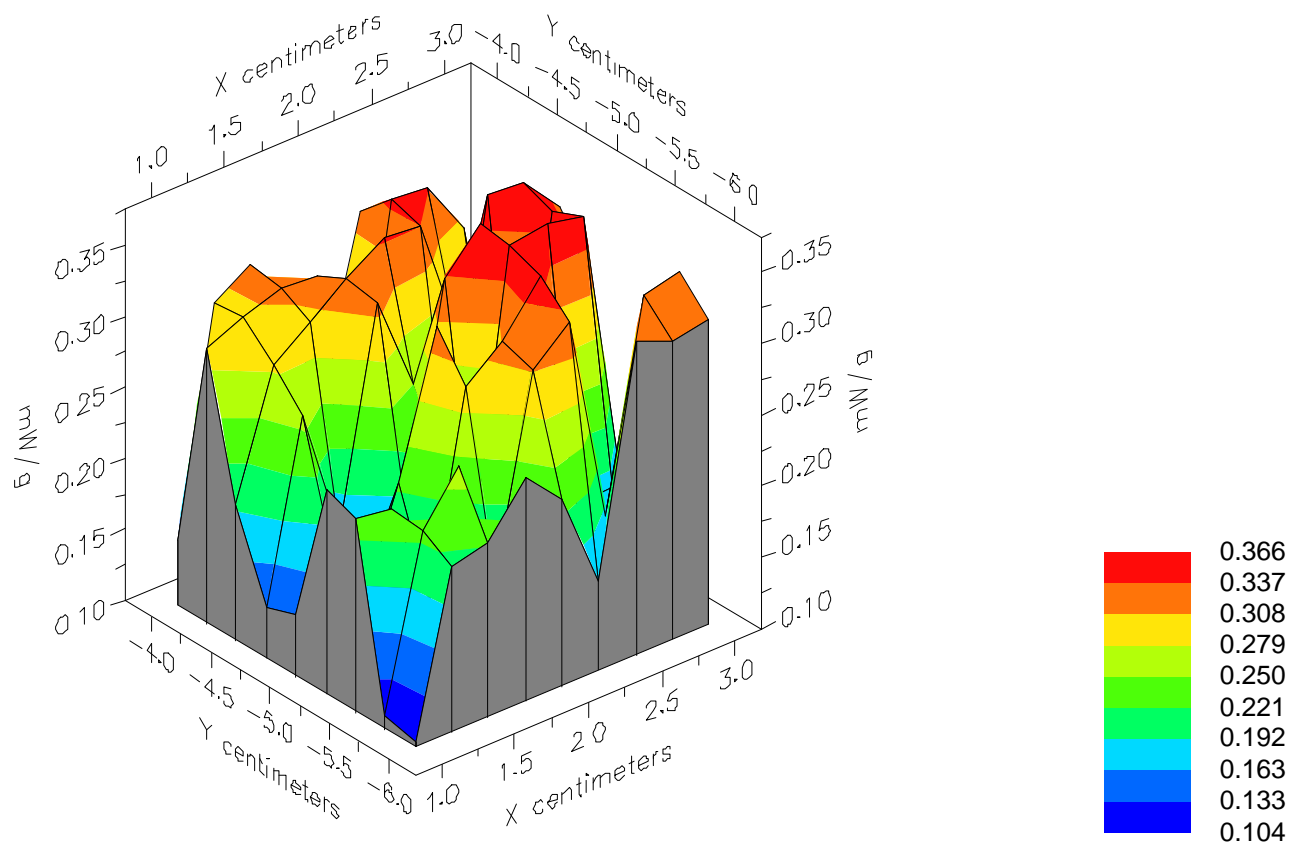


File : 01022814\_ZOOM

Start : 28-Feb-101 04:07:28 pm End : 28-Feb-101 04:18:27 pm

SAMSUNG/STH-N270/6D;836.49MHz;W;Helical/Internal;

Head/Left Ear;ZOOM/SAR;PCTEST/E Field/0 DegreesBrain/41.500/0.900

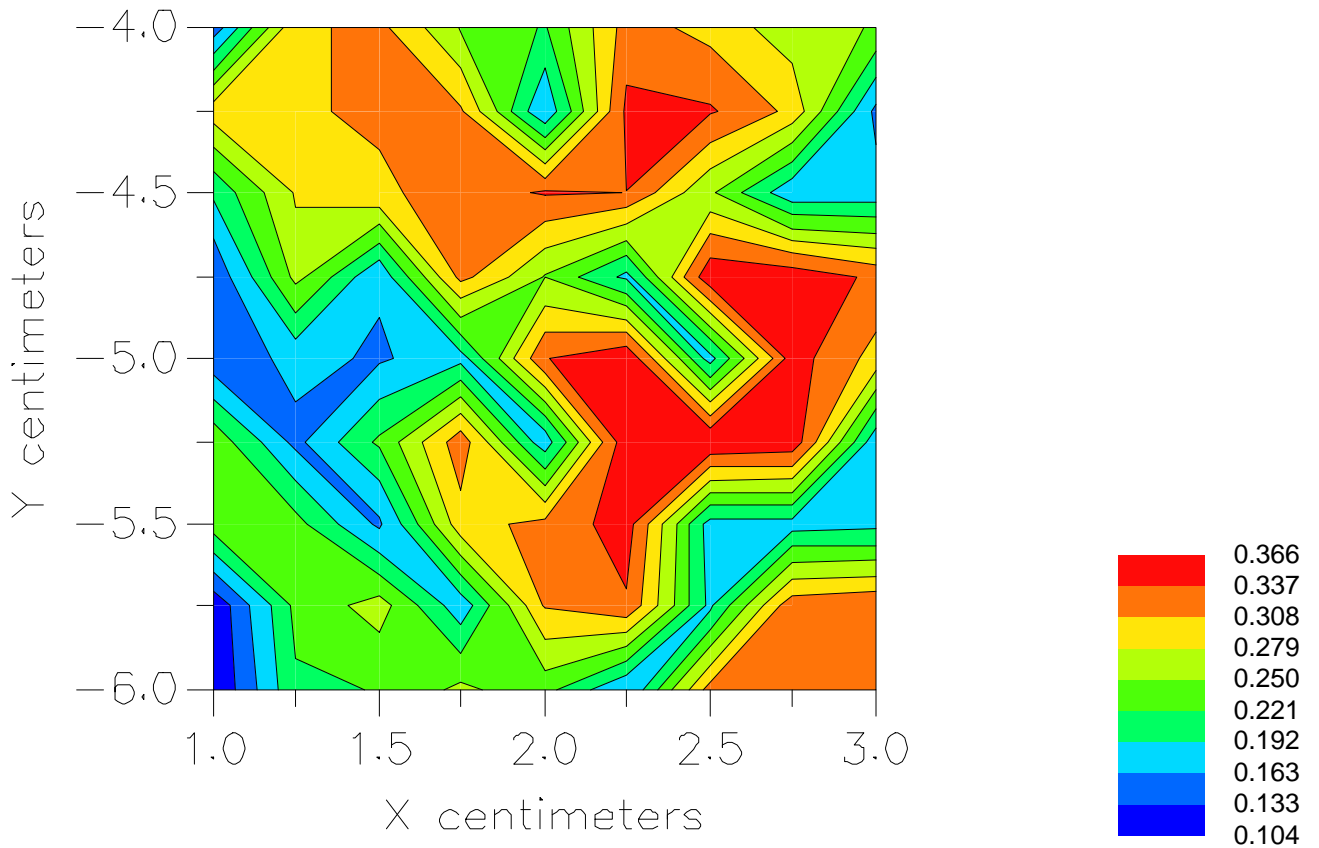


File : 01022814\_ZOOM

Start : 28-Feb-101 04:07:28 pm End : 28-Feb-101 04:18:27 pm

SAMSUNG/STH-N270/6D;836.49MHz;W;Helical/Internal;

Head/Left Ear;ZOOM/SAR;PCTEST/E Field/0 DegreesBrain/41.500/0.900



File : c:/idx3/SYSTEM/SARMEAS3/data/Normal/01022815\_ZOOM.VLT  
Start : 28-Feb-101 04:21:50 pm End : 28-Feb-101 04:32:54 pm

Radio Type : SAMSUNG  
Model Number : STH-N270  
Serial Number : 6D  
Frequency : 848.97 MHz  
Peak Trans. Pwr : 0.500 W  
Start Trans. Pwr : 0.500 W  
Antenna Type : Helical  
Antenna Posn. : Internal  
Phantom Type : Head  
Phantom Posn. : Left Ear  
Scan Type : ZOOM/SAR  
Probe Name : PCTEST  
Field Type : E Field  
Orientation : 0 Degrees

Mixture Type = Brain  
Mixture Dielectric Constant = 41.500  
Mixture Conductivity = 0.900

Comment :  
SAMSUNG DUAL-MODE PHONE - TDMA MODE  
CHAN 0799 Conducted 27.0 dBm  
SAMSUNG DUAL-MODE PHONE

Robot : PCTEST

Probe Offset = 0.25 cm  
Sensor Factor = 0.0108  
Conversion Factor = 0.788

PCTEST Amplifier Channel Settings : 0.166 0.135 0.132

Max Location : X = 2.750, Y = -4.750, Z = 0.000 (cm) Value = 9.496

Measured Values (volts) =  
9.103E-003 6.386E-003 6.290E-003 5.287E-003 4.950E-003 4.555E-003  
4.172E-003 2.834E-003 3.014E-003 2.652E-003 1.066E-003 1.545E-003  
1.095E-003 8.725E-004 7.919E-004 8.679E-004 1.036E-003 1.173E-003  
1.405E-003 1.341E-003 1.103E-003

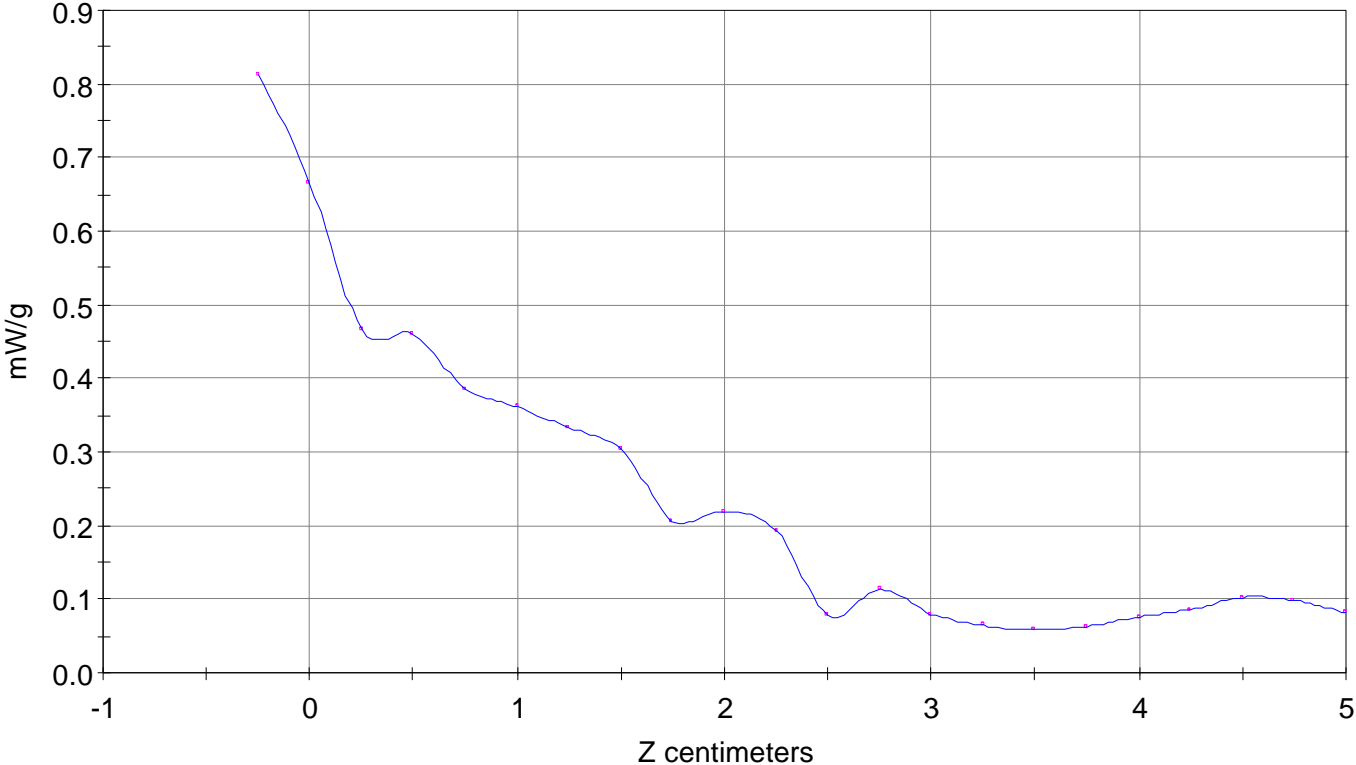
Calc. Voltage @ Surface (Vs) = 0.0111

Voltage @ 1.00 cm (Vt) = 0.0053

Ave. Voltage (Vs+Vt)/2 = 0.0082

Ave. SAR over 1 g (mW/g) = 0.5982

SAR Scan  
File : 01022815\_ZOOM  
Start : 28-Feb-101 04:21:50 pm End : 28-Feb-101 04:32:54 pm  
SAMSUNG/STH-N270/6D;848.97MHz;W;Helical/Internal;  
Head/Left Ear;ZOOM/SAR;PCTEST/E Field/0 DegreesBrain/41.500/0.900

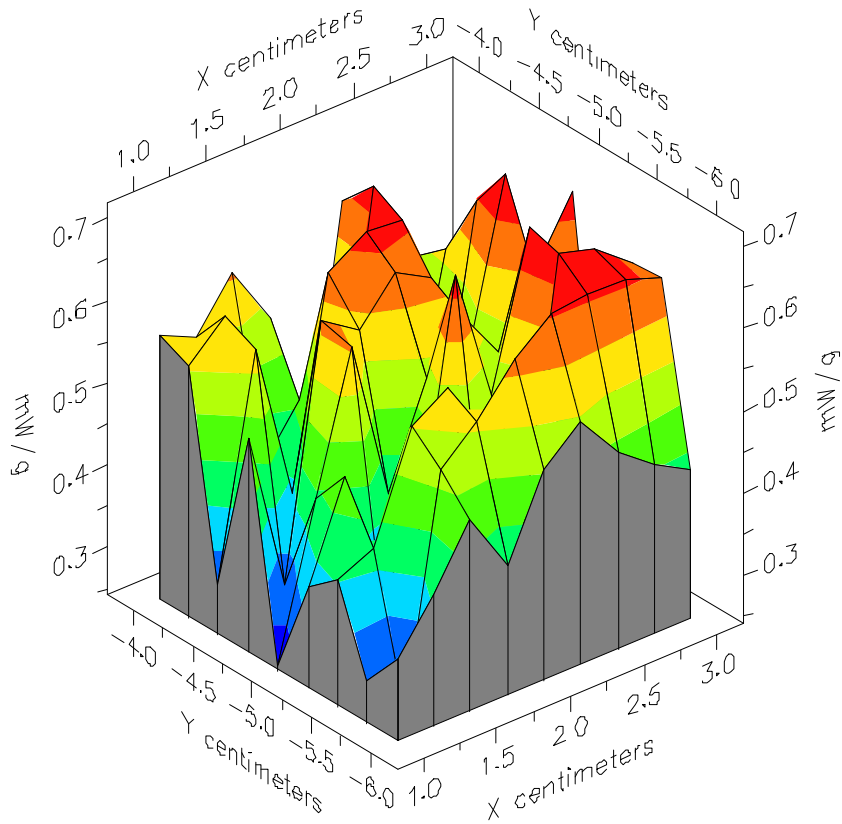


File : 01022815\_ZOOM

Start : 28-Feb-101 04:21:50 pm End : 28-Feb-101 04:32:54 pm

SAMSUNG/STH-N270/6D;848.97MHz;W;Helical/Internal;

Head/Left Ear;ZOOM/SAR;PCTEST/E Field/0 DegreesBrain/41.500/0.900

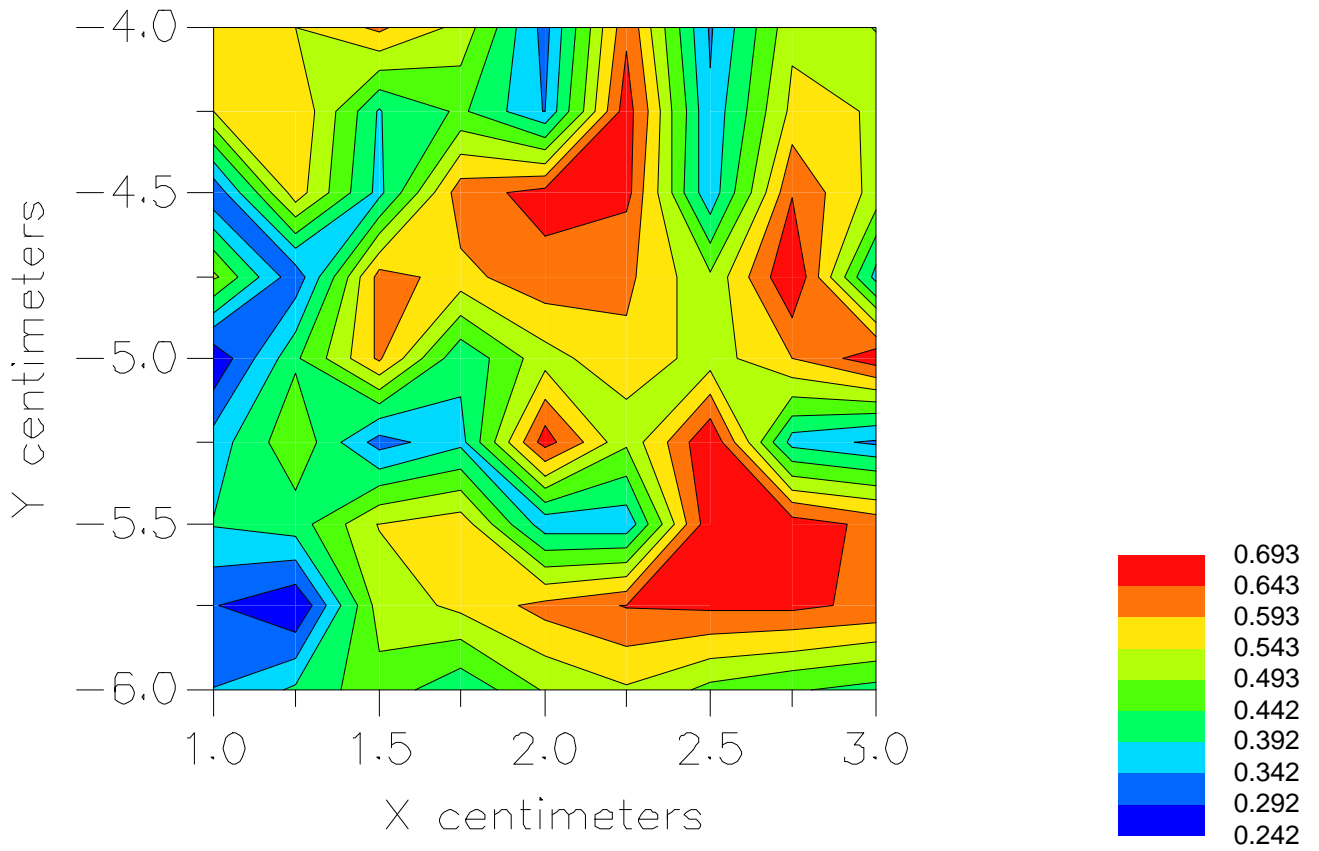


File : 01022815\_ZOOM

Start : 28-Feb-101 04:21:50 pm End : 28-Feb-101 04:32:54 pm

SAMSUNG/STH-N270/6D;848.97MHz;W;Helical/Internal;

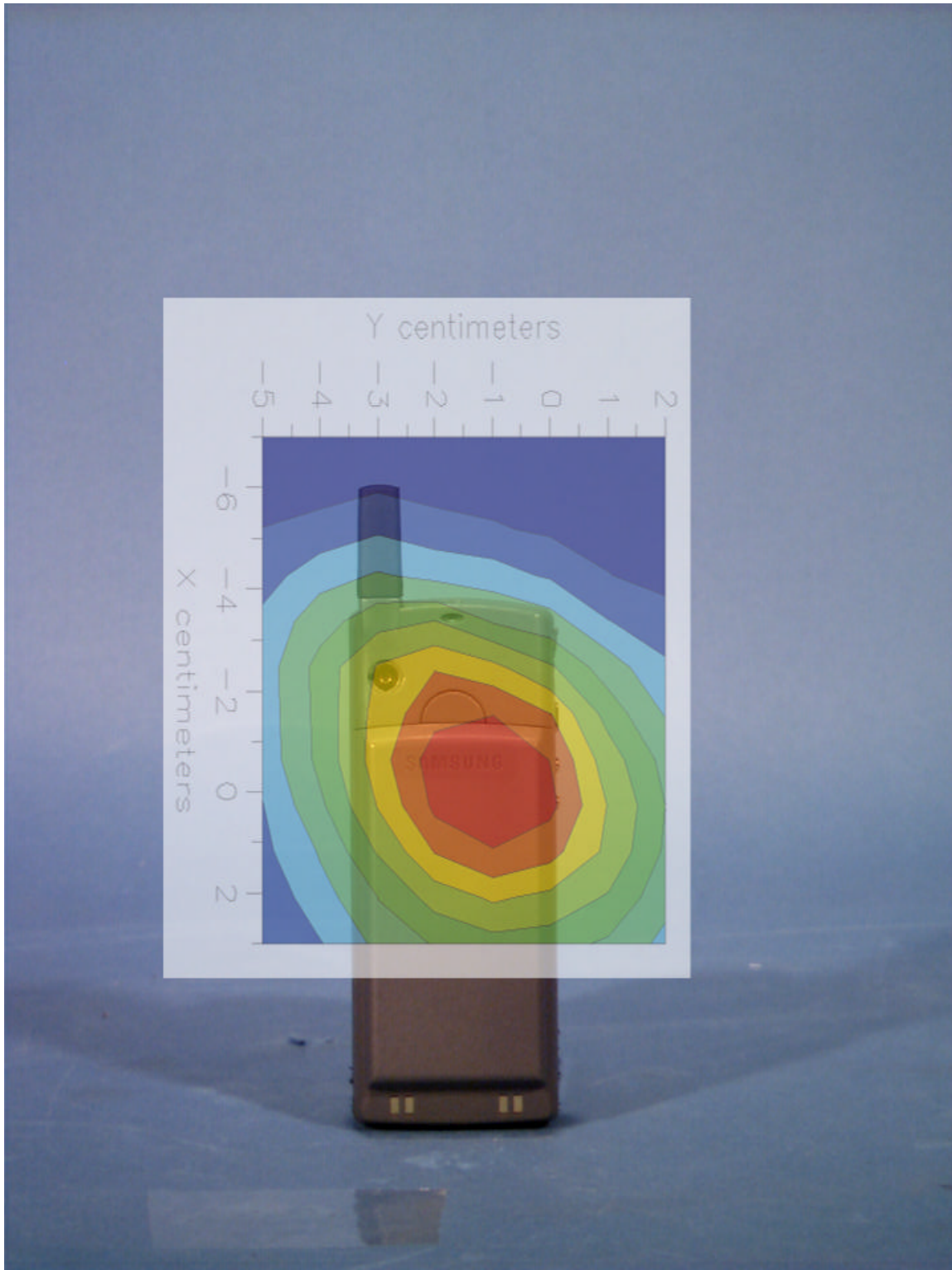
Head/Left Ear;ZOOM/SAR;PCTEST/E Field/0 DegreesBrain/41.500/0.900



# Peak SAR Location

---

## Body SAR



File : c:/idx3/SYSTEM/SARMEAS3/data/Normal/01030108\_ZOOM.VLT  
Start : 1-Mar-101 01:15:58 pm End : 1-Mar-101 01:25:57 pm

Radio Type : SAMSUNG  
Model Number : STH-N270  
Serial Number : 6D  
Frequency : 824.04 MHz  
Peak Trans. Pwr : 0.400 W  
Start Trans. Pwr : 0.400 W  
Antenna Type : Helical  
Antenna Posn. : Internal  
Phantom Type : Body  
Phantom Posn. : Abdomen  
Scan Type : ZOOM/SAR  
Probe Name : PCTEST  
Field Type : E Field  
Orientation : 0 Degrees

Mixture Type = Muscle  
Mixture Dielectric Constant = 51.700  
Mixture Conductivity = 1.100

Comment :  
SAMSUNG DUAL-MODE PHONE - AMPS MODE  
CHAN 0991 Conducted 26.0 dBm  
SAMSUNG DUAL-MODE PHONE

Robot : PCTEST

Probe Offset = 0.25 cm  
Sensor Factor = 0.0108  
Conversion Factor = 0.894

PCTEST Amplifier Channel Settings : 0.166 0.135 0.132

Max Location : X = -0.500, Y = -1.750, Z = 0.000 (cm) Value = 17.045

Measured Values (volts) =  
1.689E-002 1.382E-002 1.144E-002 9.453E-003 8.229E-003 7.278E-003  
6.627E-003 6.173E-003 5.883E-003 5.475E-003 4.959E-003 4.229E-003  
3.314E-003 2.553E-003 1.754E-003 1.142E-003 8.514E-004 9.359E-004  
1.137E-003 1.493E-003 1.770E-003

Calc. Voltage @ Surface (Vs) = 0.0205

Voltage @ 1.00 cm (Vt) = 0.0095

Ave. Voltage (Vs+Vt)/2 = 0.0150

Ave. SAR over 1 g (mW/g) = 1.2404

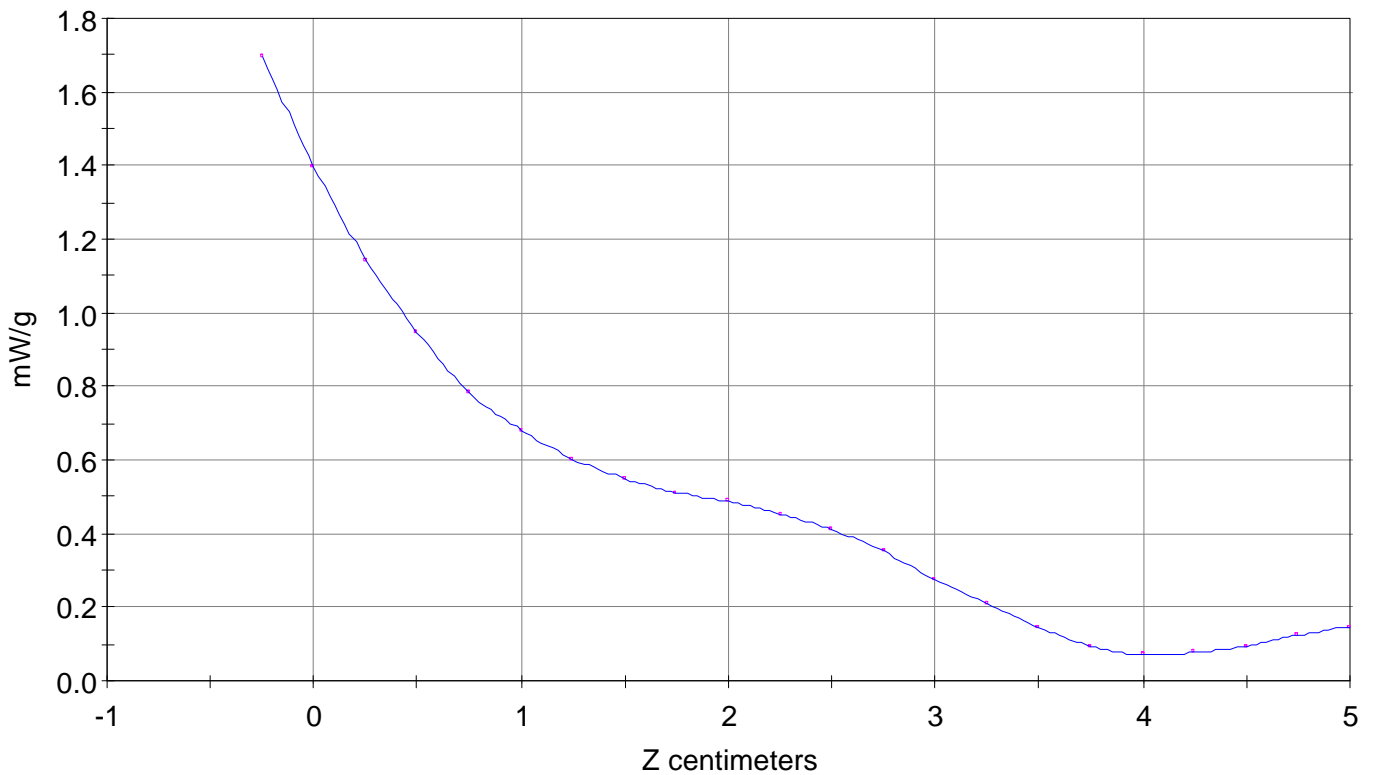
### SAR Scan

File : 01030108\_ZOOM

Start : 1-Mar-101 01:15:58 pm End : 1-Mar-101 01:25:57 pm

SAMSUNG/STH-N270/6D;824.04MHz;W;Helical/Internal;

Body/Abdomen;ZOOM/SAR;PCTEST/E Field/0 DegreesMuscle/51.700/1.100

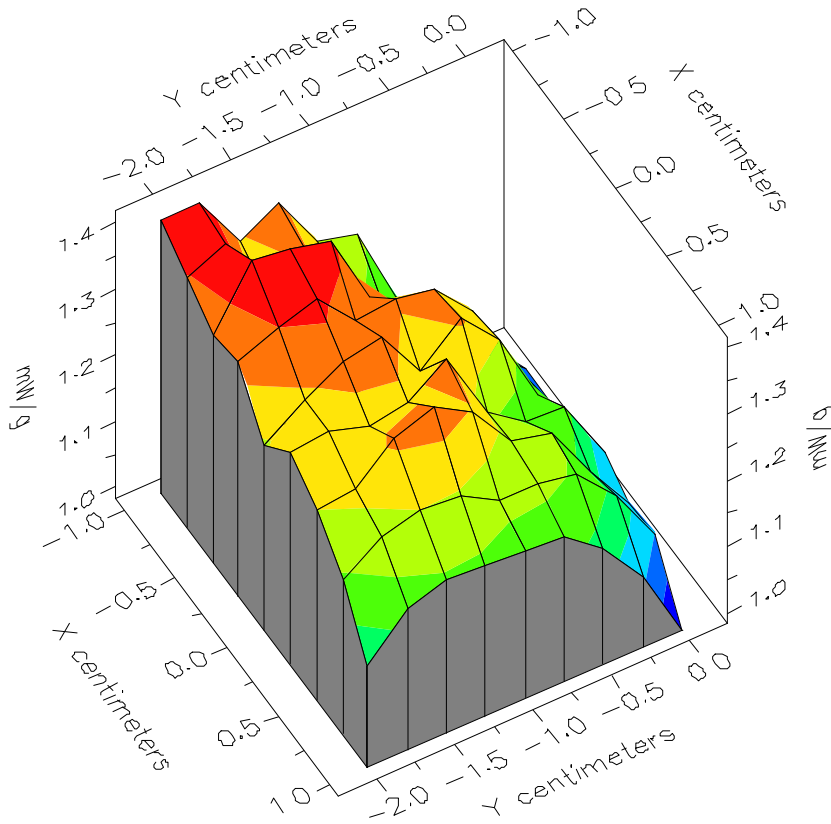


File : 01030108\_ZOOM

Start : 1-Mar-101 01:15:58 pm End : 1-Mar-101 01:25:57 pm

SAMSUNG/STH-N270/6D;824.04MHz;W;Helical/Internal;

Body/Abdomen;ZOOM/SAR;PCTEST/E Field/0 DegreesMuscle/51.700/1.100

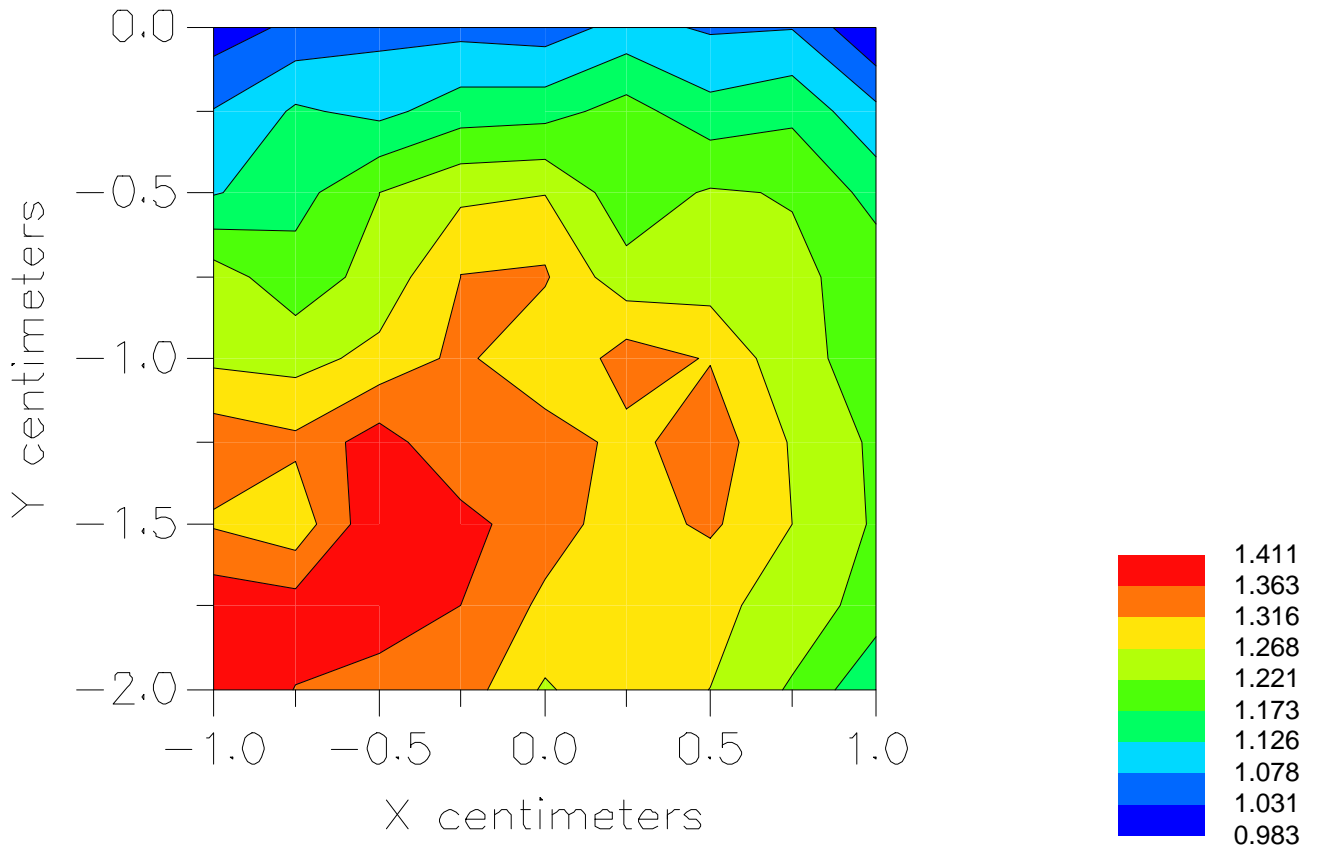


File : 01030108\_ZOOM

Start : 1-Mar-101 01:15:58 pm End : 1-Mar-101 01:25:57 pm

SAMSUNG/STH-N270/6D;824.04MHz;W;Helical/Internal;

Body/Abdomen;ZOOM/SAR;PCTEST/E Field/0 DegreesMuscle/51.700/1.100



File : c:/idx3/SYSTEM/SARMEAS3/data/Normal/01030107\_ZOOM.VLT  
Start : 1-Mar-101 12:06:49 pm End : 1-Mar-101 12:16:47 pm

Radio Type : SAMSUNG  
Model Number : STH-N270  
Serial Number : 6D  
Frequency : 836.49 MHz  
Peak Trans. Pwr : 0.400 W  
Start Trans. Pwr : 0.400 W  
Antenna Type : Helical  
Antenna Posn. : Internal  
Phantom Type : Body  
Phantom Posn. : Abdomen  
Scan Type : ZOOM/SAR  
Probe Name : PCTEST  
Field Type : E Field  
Orientation : 0 Degrees

Mixture Type = Muscle  
Mixture Dielectric Constant = 51.700  
Mixture Conductivity = 1.100

Comment :  
SAMSUNG DUAL-MODE PHONE - AMPS MODE  
CHAN 0383 Conducted 26.0 dBm  
SAMSUNG DUAL-MODE PHONE

Robot : PCTEST

Probe Offset = 0.25 cm  
Sensor Factor = 0.0108  
Conversion Factor = 0.894

PCTEST Amplifier Channel Settings : 0.166 0.135 0.132

Max Location : X = -0.250, Y = -1.500, Z = 0.000 (cm) Value = 10.311

Measured Values (volts) =  
1.033E-002 8.690E-003 7.137E-003 5.985E-003 5.093E-003 4.441E-003  
3.962E-003 3.675E-003 3.537E-003 3.249E-003 2.929E-003 2.651E-003  
2.233E-003 1.736E-003 1.229E-003 8.353E-004 5.419E-004 4.470E-004  
5.139E-004 6.850E-004 8.796E-004

Calc. Voltage @ Surface (Vs) = 0.0124

Voltage @ 1.00 cm (Vt) = 0.0060

Ave. Voltage (Vs+Vt)/2 = 0.0092

Ave. SAR over 1 g (mW/g) = 0.7620

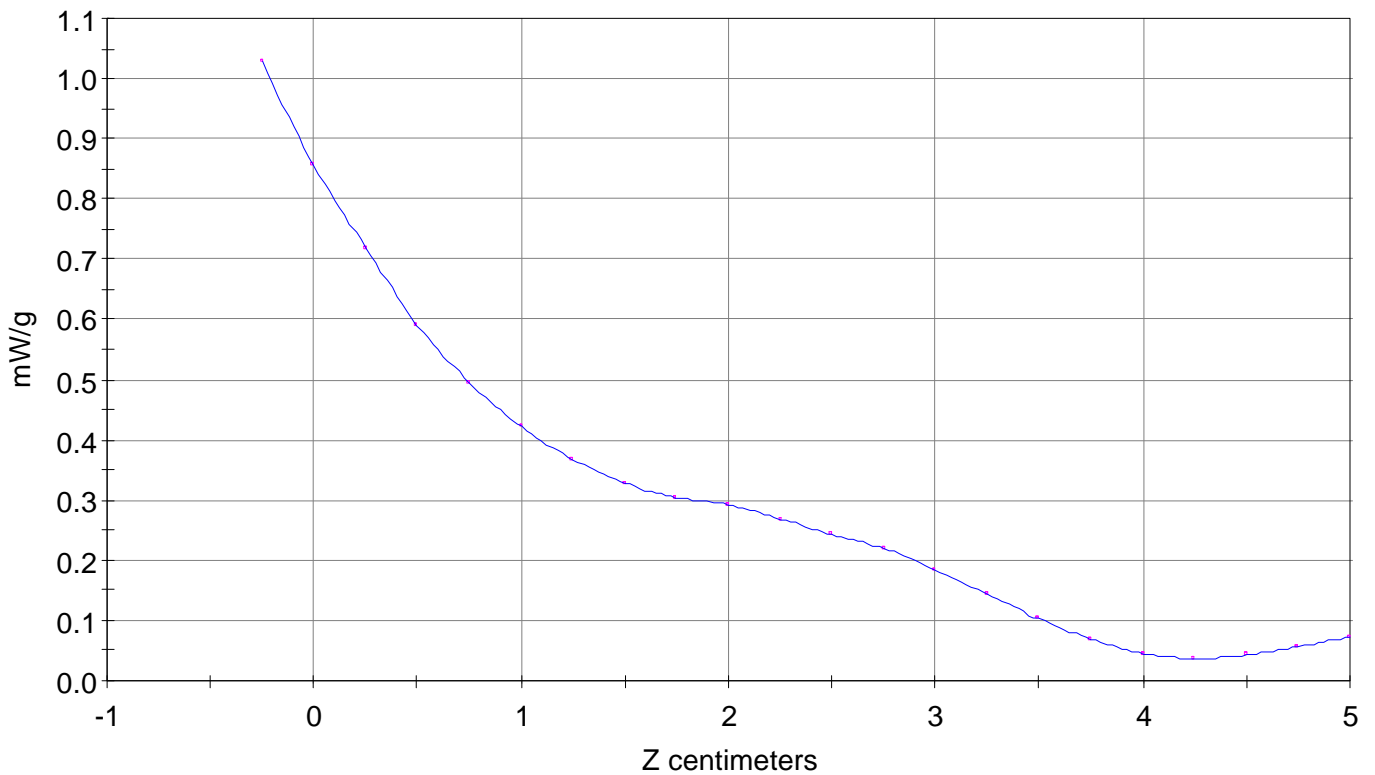
# SAR Scan

File : 01030107\_ZOOM

Start : 1-Mar-101 12:06:49 pm End : 1-Mar-101 12:16:47 pm

SAMSUNG/STH-N270/6D;836.49MHz;W;Helical/Internal;

Body/Abdomen;ZOOM/SAR;PCTEST/E Field/0 DegreesMuscle/51.700/1.100

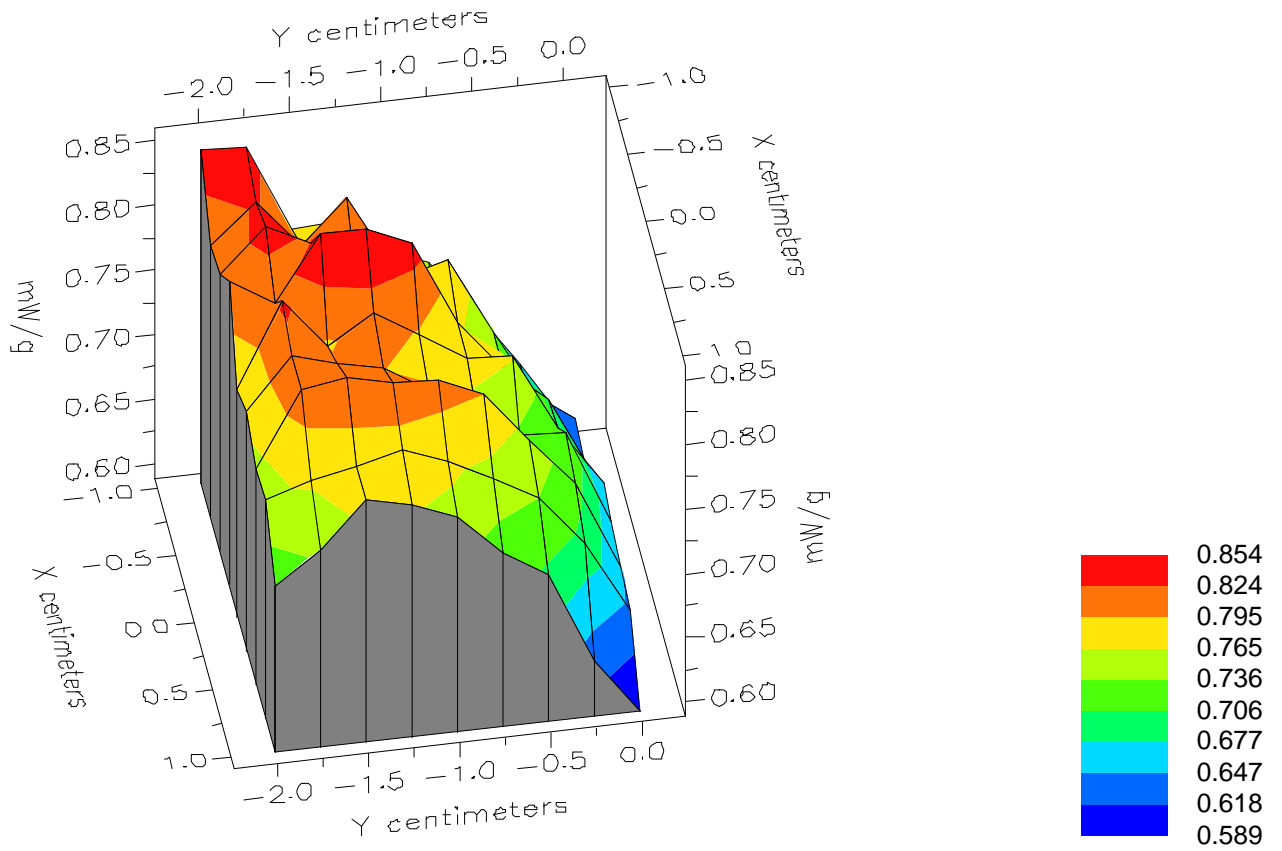


File : 01030107\_ZOOM

Start : 1-Mar-101 12:06:49 pm End : 1-Mar-101 12:16:47 pm

SAMSUNG/STH-N270/6D;836.49MHz;W;Helical/Internal;

Body/Abdomen;ZOOM/SAR;PCTEST/E Field/0 DegreesMuscle/51.700/1.100

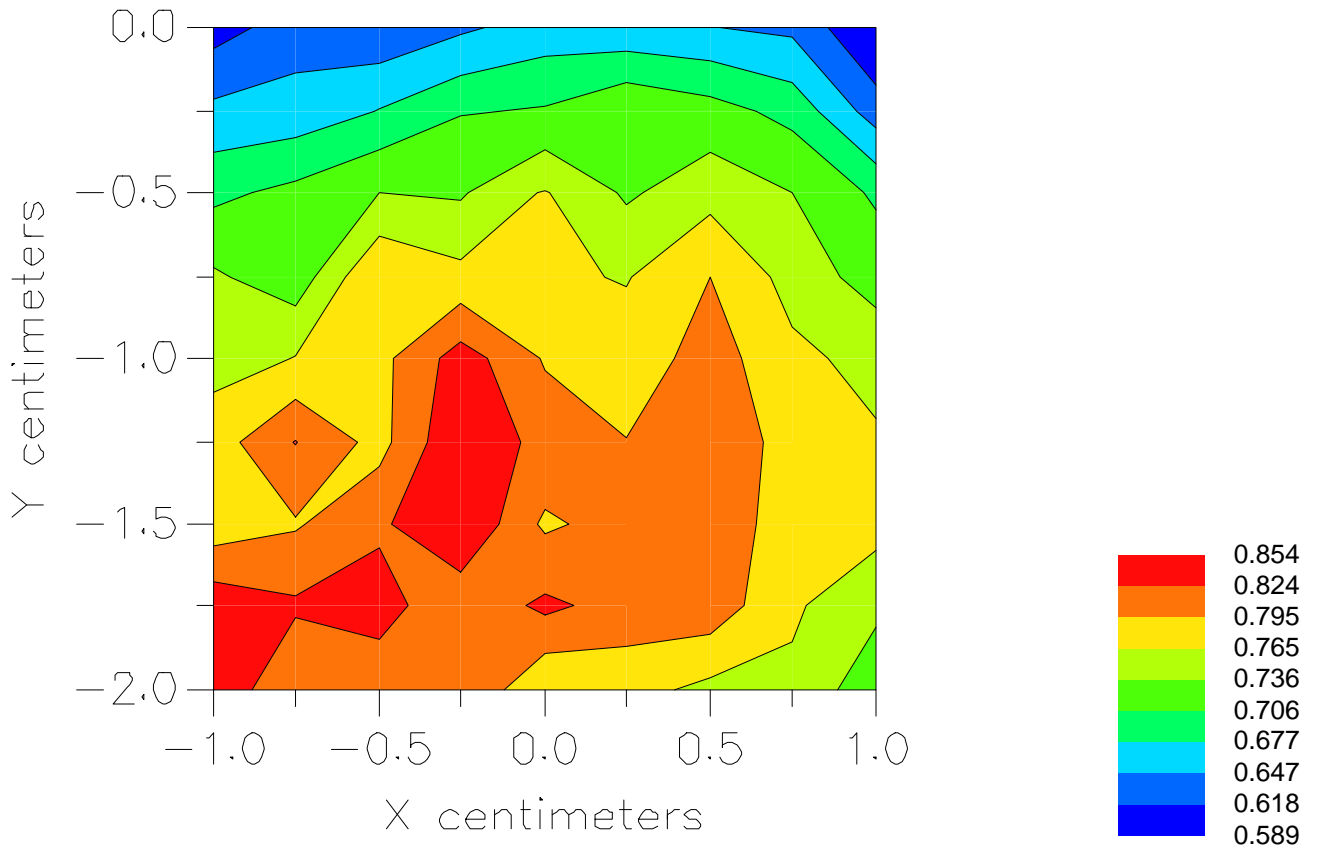


File : 01030107\_ZOOM

Start : 1-Mar-101 12:06:49 pm End : 1-Mar-101 12:16:47 pm

SAMSUNG/STH-N270/6D;836.49MHz;W;Helical/Internal;

Body/Abdomen;ZOOM/SAR;PCTEST/E Field/0 DegreesMuscle/51.700/1.100



File : c:/idx3/SYSTEM/SARMEAS3/data/Normal/01030106\_ZOOM.VLT  
Start : 1-Mar-101 11:38:12 am End : 1-Mar-101 11:48:03 am

Radio Type : SAMSUNG  
Model Number : STH-N270  
Serial Number : 6D  
Frequency : 848.97 MHz  
Peak Trans. Pwr : 0.400 W  
Start Trans. Pwr : 0.400 W  
Antenna Type : Helical  
Antenna Posn. : Internal  
Phantom Type : Body  
Phantom Posn. : Abdomen  
Scan Type : ZOOM/SAR  
Probe Name : PCTEST  
Field Type : E Field  
Orientation : 0 Degrees

Mixture Type = Muscle  
Mixture Dielectric Constant = 51.700  
Mixture Conductivity = 1.100

Comment :  
SAMSUNG DUAL-MODE PHONE - AMPS MODE  
CHAN 0799 Conducted 26.0 dBm  
SAMSUNG DUAL-MODE PHONE

Robot : PCTEST

Probe Offset = 0.25 cm  
Sensor Factor = 0.0108  
Conversion Factor = 0.894

PCTEST Amplifier Channel Settings : 0.166 0.135 0.132

Max Location : X = -0.500, Y = -1.750, Z = 0.000 (cm) Value = 15.771

Measured Values (volts) =  
1.631E-002 1.348E-002 1.110E-002 9.072E-003 7.711E-003 6.697E-003  
5.939E-003 5.512E-003 5.187E-003 4.875E-003 4.469E-003 3.901E-003  
3.170E-003 2.447E-003 1.721E-003 1.130E-003 7.893E-004 7.350E-004  
8.994E-004 1.201E-003 1.446E-003

Calc. Voltage @ Surface (Vs) = 0.0198

Voltage @ 1.00 cm (Vt) = 0.0091

Ave. Voltage (Vs+Vt)/2 = 0.0144

Ave. SAR over 1 g (mW/g) = 1.1940

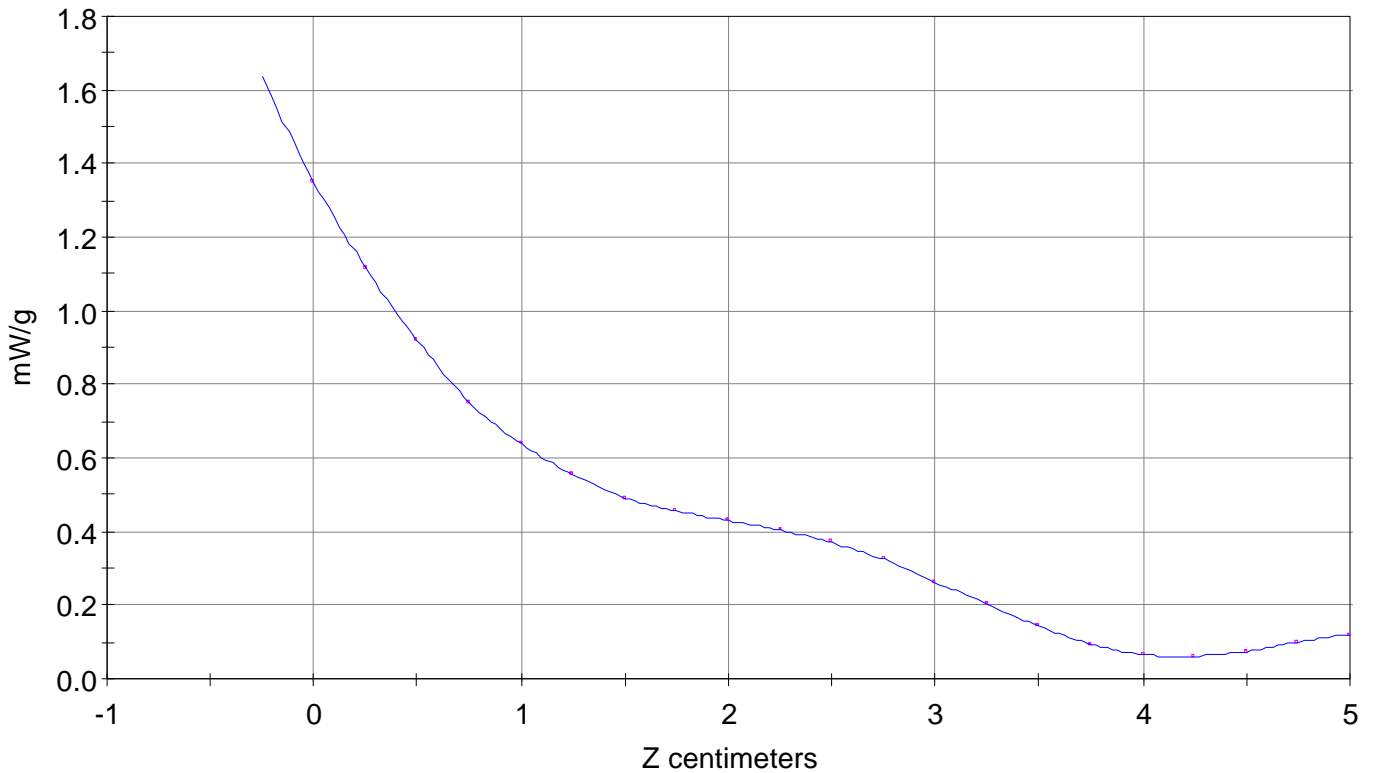
### SAR Scan

File : 01030106\_ZOOM

Start : 1-Mar-101 11:38:12 am End : 1-Mar-101 11:48:03 am

SAMSUNG/STH-N270/6D;848.97MHz;W;Helical/Internal;

Body/Abdomen;ZOOM/SAR;PCTEST/E Field/0 DegreesMuscle/51.700/1.100

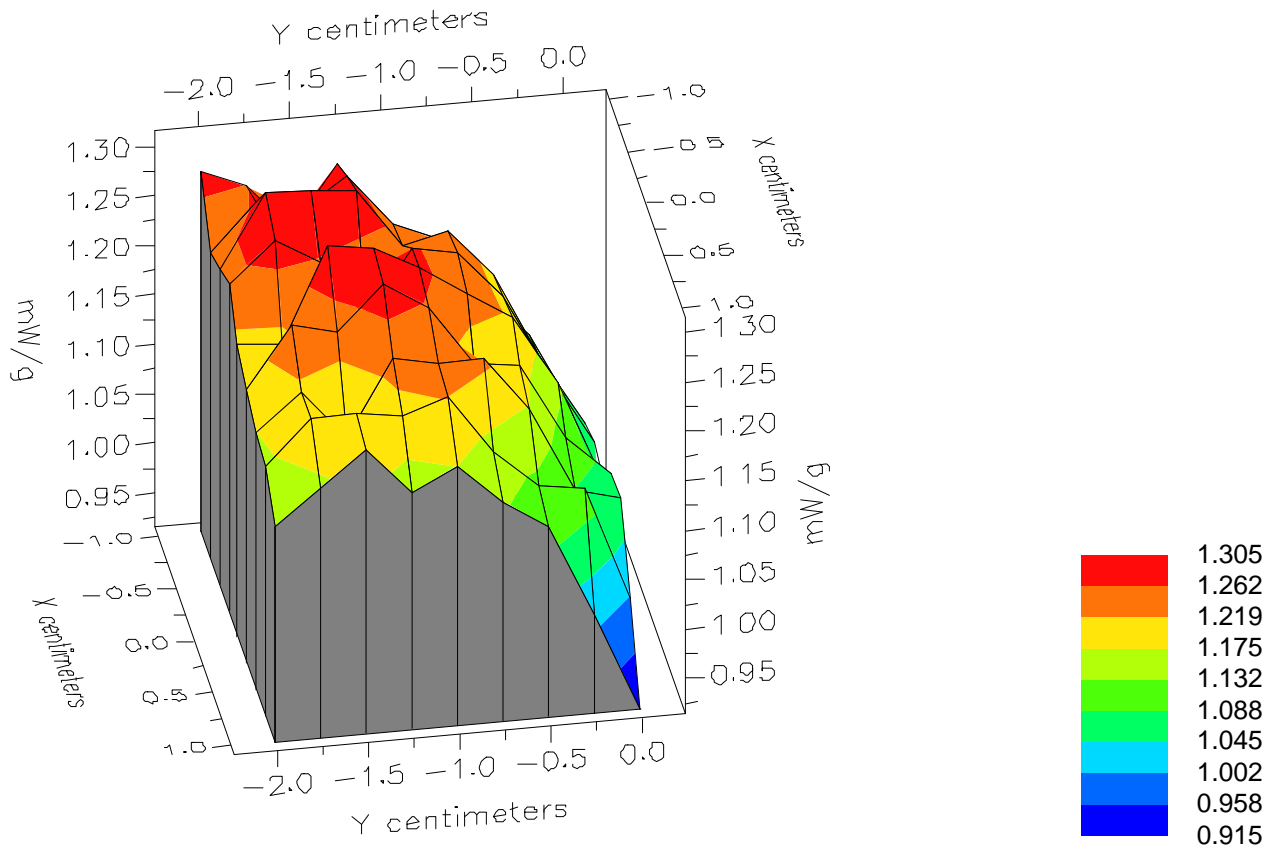


File : 01030106\_ZOOM

Start : 1-Mar-101 11:38:12 am End : 1-Mar-101 11:48:03 am

SAMSUNG/STH-N270/6D;848.97MHz;W;Helical/Internal;

Body/Abdomen;ZOOM/SAR;PCTEST/E Field/0 DegreesMuscle/51.700/1.100

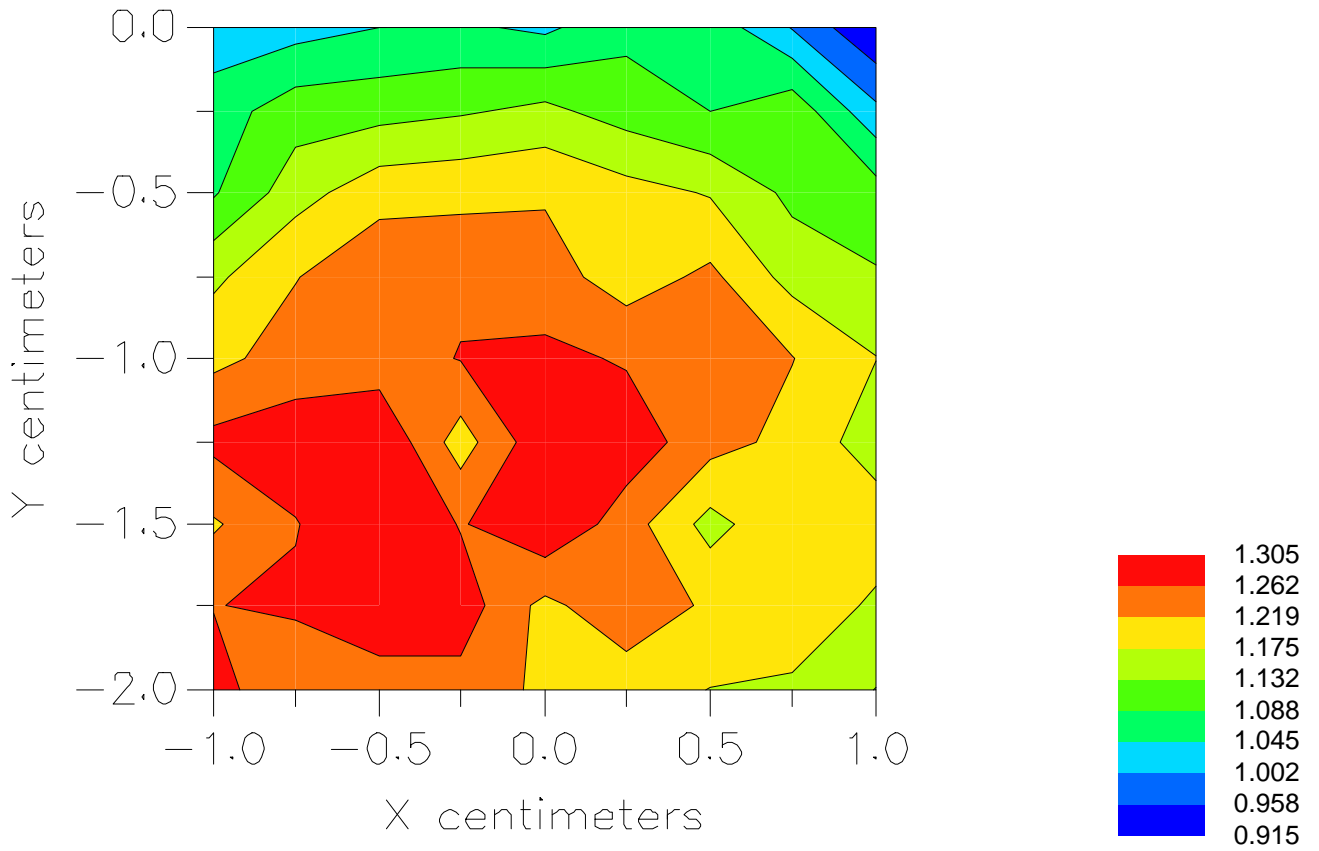


File : 01030106\_ZOOM

Start : 1-Mar-101 11:38:12 am End : 1-Mar-101 11:48:03 am

SAMSUNG/STH-N270/6D;848.97MHz;W;Helical/Internal;

Body/Abdomen;ZOOM/SAR;PCTEST/E Field/0 DegreesMuscle/51.700/1.100



File : c:/idx3/SYSTEM/SARMEAS3/data/Normal/01030109\_ZOOM.VLT  
Start : 1-Mar-101 01:40:12 pm End : 1-Mar-101 01:47:52 pm

Radio Type : SAMSUNG  
Model Number : STH-N270  
Serial Number : 6D  
Frequency : 848.97 MHz  
Peak Trans. Pwr : 0.500 W  
Start Trans. Pwr : 0.500 W  
Antenna Type : Helical  
Antenna Posn. : Internal  
Phantom Type : Body  
Phantom Posn. : Abdomen  
Scan Type : ZOOM/SAR  
Probe Name : PCTEST  
Field Type : E Field  
Orientation : 0 Degrees

Mixture Type = Muscle  
Mixture Dielectric Constant = 51.700  
Mixture Conductivity = 1.100

Comment :  
SAMSUNG DUAL-MODE PHONE - TDMA MODE  
CHAN 0799 Conducted 27.0 dBm  
SAMSUNG DUAL-MODE PHONE

Robot : PCTEST

Probe Offset = 0.25 cm  
Sensor Factor = 0.0108  
Conversion Factor = 0.894

PCTEST Amplifier Channel Settings : 0.166 0.135 0.132

Max Location : X = 0.250, Y = -1.250, Z = 0.000 (cm) Value = 6.975

Measured Values (volts) =  
6.594E-003 5.074E-003 4.586E-003 3.824E-003 1.672E-003 1.468E-003  
2.417E-003 1.227E-003 2.108E-003 9.683E-004 1.891E-003 1.776E-003  
1.200E-003 9.008E-004 4.693E-004 5.358E-004 3.786E-004 2.636E-004  
2.930E-004 3.715E-004 4.621E-004

Calc. Voltage @ Surface (Vs) = 0.0079

Voltage @ 1.00 cm (Vt) = 0.0038

Ave. Voltage (Vs+Vt)/2 = 0.0059

Ave. SAR over 1 g (mW/g) = 0.4866

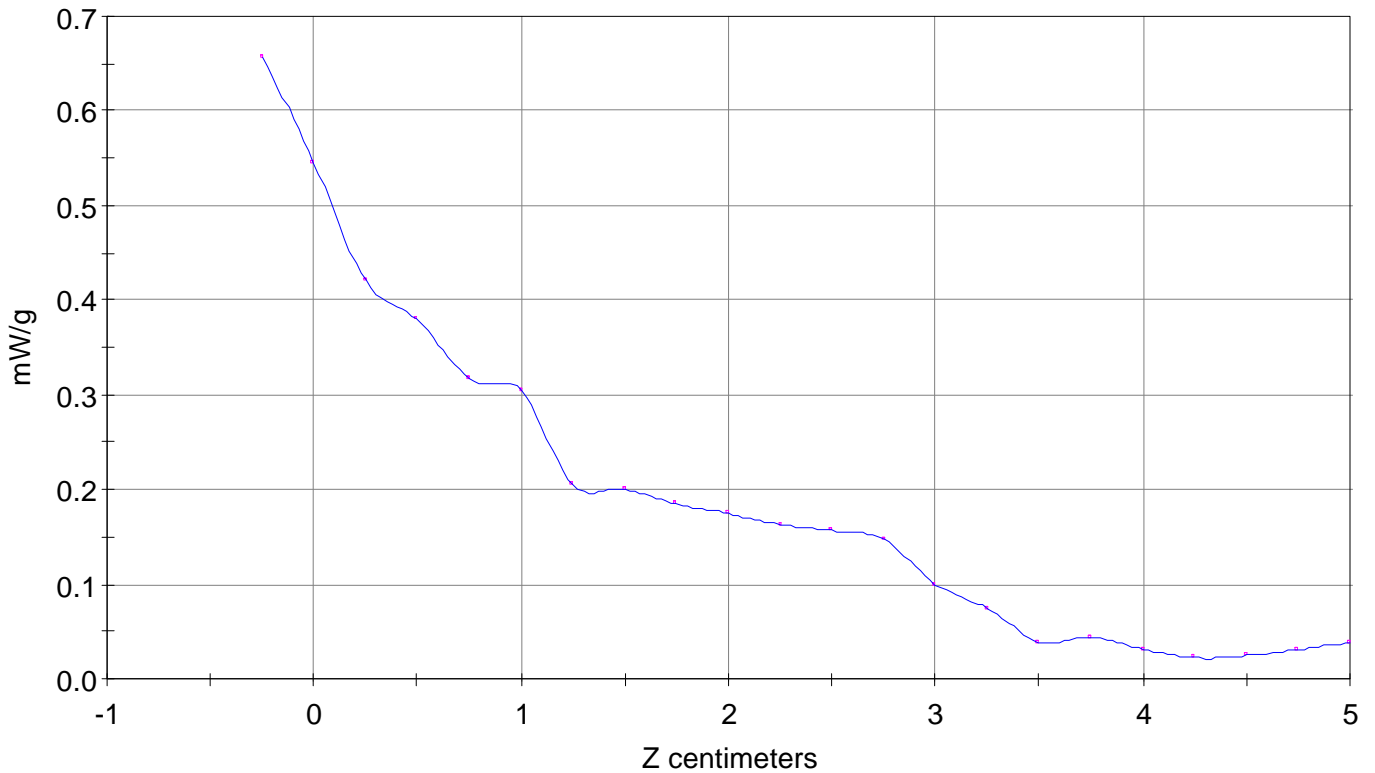
### SAR Scan

File : 01030109\_ZOOM

Start : 1-Mar-101 01:40:12 pm End : 1-Mar-101 01:47:52 pm

SAMSUNG/STH-N270/6D;848.97MHz;W;Helical/Internal;

Body/Abdomen;ZOOM/SAR;PCTEST/E Field/0 DegreesMuscle/51.700/1.100

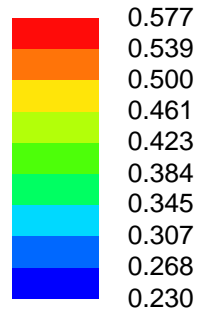
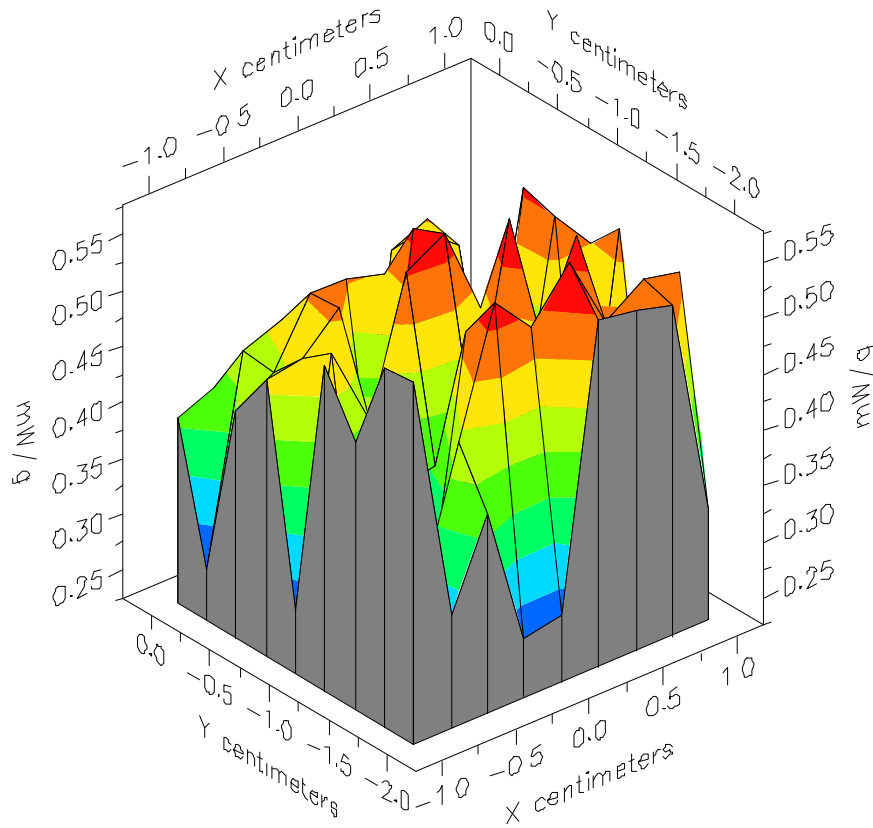


File : 01030109\_ZOOM

Start : 1-Mar-101 01:40:12 pm End : 1-Mar-101 01:47:52 pm

SAMSUNG/STH-N270/6D;848.97MHz;W;Helical/Internal;

Body/Abdomen;ZOOM/SAR;PCTEST/E Field/0 DegreesMuscle/51.700/1.100



File : 01030109\_ZOOM

Start : 1-Mar-101 01:40:12 pm End : 1-Mar-101 01:47:52 pm

SAMSUNG/STH-N270/6D;848.97MHz;W;Helical/Internal;

Body/Abdomen;ZOOM/SAR;PCTEST/E Field/0 DegreesMuscle/51.700/1.100

