

Peak SAR Location

Head SAR



File : c:/idx3/SYSTEM/SARMEAS3/data/Normal/01071011_ZOOM.VLT
Start : 10-Jul-101 04:22:16 pm End : 10-Jul-101 04:31:54 pm

Radio Type : SAMSUNG
Model Number : STH-A225
Serial Number : 2
Frequency : 824.04 MHz
Peak Trans. Pwr : 0.420 W
Start Trans. Pwr : 0.420 W
Antenna Type : Helical
Antenna Posn. : In
Phantom Type : Head
Phantom Posn. : Left Ear
Scan Type : ZOOM/SAR
Probe Name : PCTEST
Field Type : E Field
Orientation : 0 Degrees

Mixture Type = Brain
Mixture Dielectric Constant = 41.500
Mixture Conductivity = 0.900

Comment :
SAMSUNG DUAL-MODE PHONE - AMPS MODE
CH 0991 Conducted 26.2 dBm
SAMSUNG DUAL-MODE PHONE - HEAD SAR

Robot : PCTEST

Probe Offset = 0.25 cm
Sensor Factor = 0.0108
Conversion Factor = 0.788

PCTEST Amplifier Channel Settings : 0.166 0.135 0.132

Max Location : X = 2.250, Y = -2.000, Z = 0.000 (cm) Value = 16.857

Measured Values (volts) =
1.659E-002 1.113E-002 9.387E-003 8.008E-003 6.898E-003 6.049E-003
5.292E-003 4.805E-003 4.295E-003 3.971E-003 3.569E-003 3.287E-003
2.999E-003 2.793E-003 2.431E-003 2.064E-003 1.747E-003 1.503E-003
1.227E-003 1.106E-003 1.014E-003

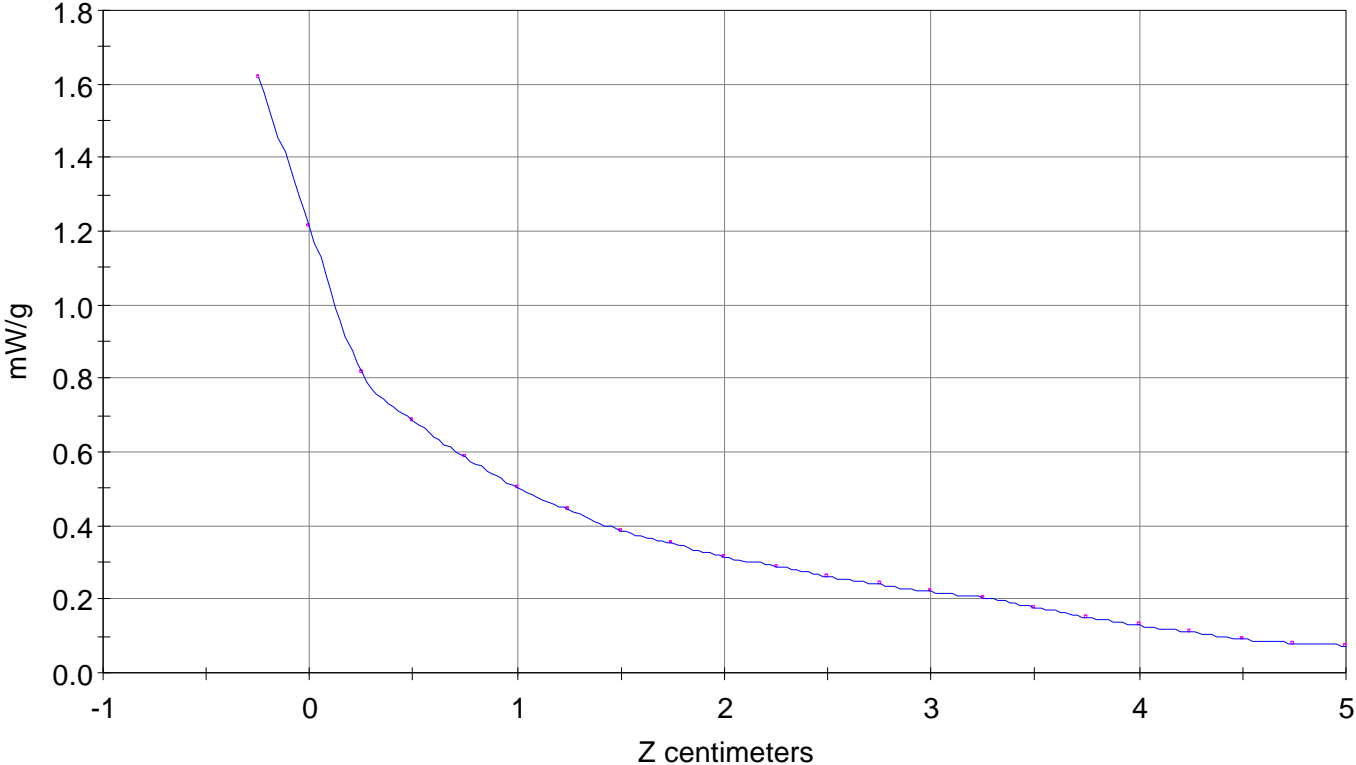
Calc. Voltage @ Surface (Vs) = 0.0222

Voltage @ 1.00 cm (Vt) = 0.0080

Ave. Voltage (Vs+Vt)/2 = 0.0151

Ave. SAR over 1 g (mW/g) = 1.1020

SAR Scan
File : 01071011_ZOOM
Start : 10-Jul-101 04:22:16 pm End : 10-Jul-101 04:31:54 pm
SAMSUNG/STH-A225/2;824.04MHz;W;Helical/In;
Head/Left Ear;ZOOM/SAR;PCTEST/E Field/0 DegreesBrain/41.500/0.900

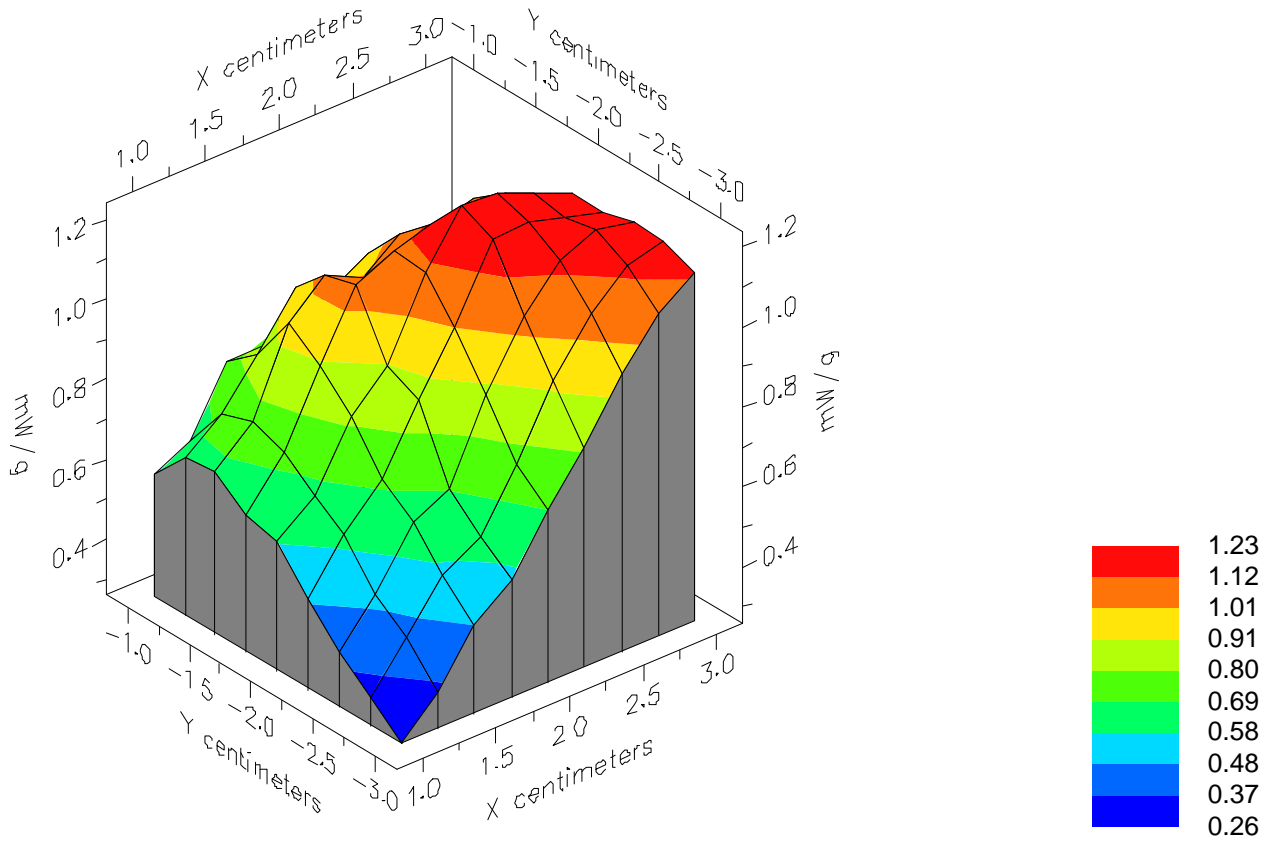


File : 01071011_ZOOM

Start : 10-Jul-101 04:22:16 pm End : 10-Jul-101 04:31:54 pm

SAMSUNG/STH-A225/2;824.04MHz;W;Helical/In;

Head/Left Ear;ZOOM/SAR;PCTEST/E Field/0 DegreesBrain/41.500/0.900

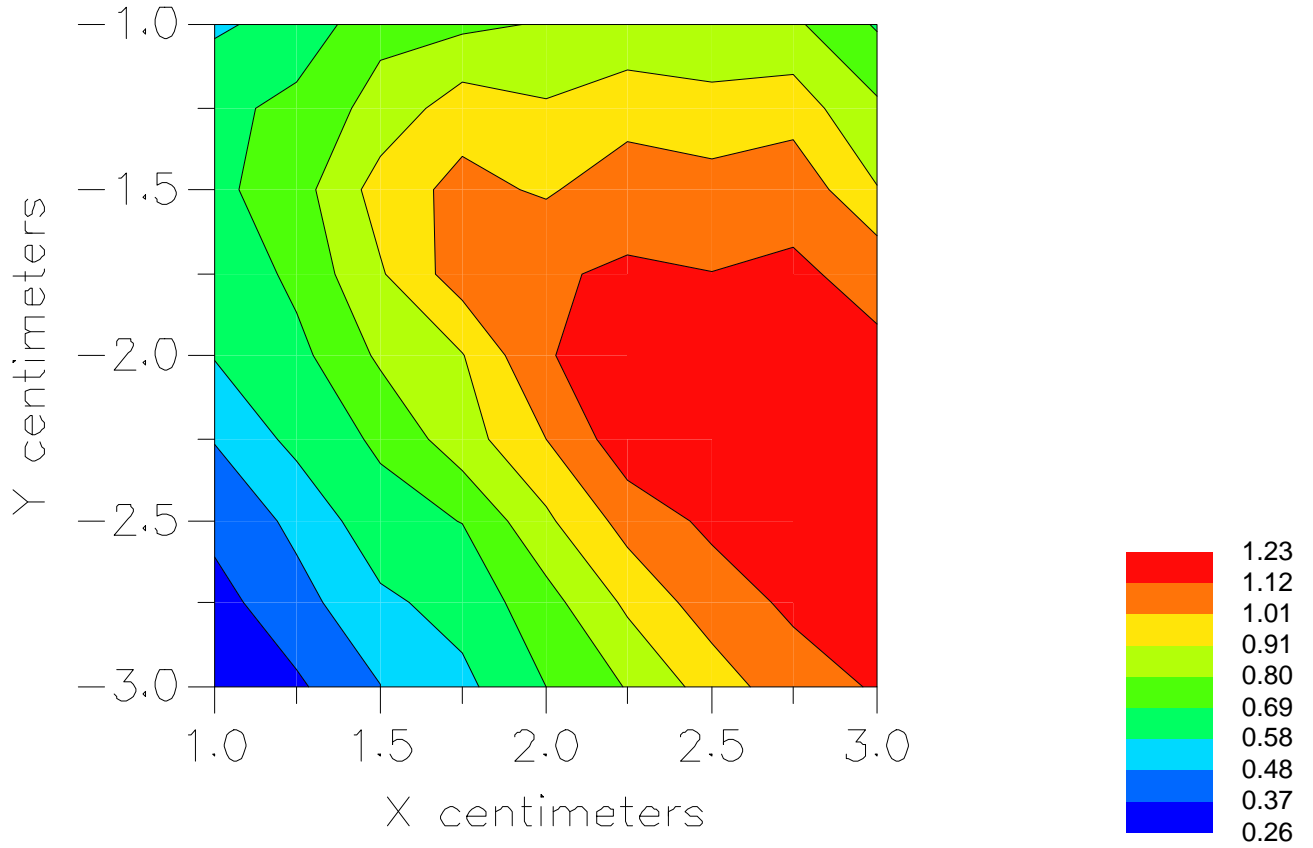


File : 01071011_ZOOM

Start : 10-Jul-101 04:22:16 pm End : 10-Jul-101 04:31:54 pm

SAMSUNG/STH-A225/2;824.04MHz;W;Helical/In;

Head/Left Ear;ZOOM/SAR;PCTEST/E Field/0 DegreesBrain/41.500/0.900



File : c:/idx3/SYSTEM/SARMEAS3/data/Normal/01071008_ZOOM.VLT
Start : 10-Jul-101 03:44:55 pm End : 10-Jul-101 03:54:32 pm

Radio Type : SAMSUNG
Model Number : STH-A225
Serial Number : 2
Frequency : 824.04 MHz
Peak Trans. Pwr : 0.420 W
Start Trans. Pwr : 0.420 W
Antenna Type : Helical
Antenna Posn. : Out
Phantom Type : Head
Phantom Posn. : Left Ear
Scan Type : ZOOM/SAR
Probe Name : PCTEST
Field Type : E Field
Orientation : 0 Degrees

Mixture Type = Brain
Mixture Dielectric Constant = 41.500
Mixture Conductivity = 0.900

Comment :
SAMSUNG DUAL-MODE PHONE - AMPS MODE
CH 0991 Conducted 26.2 dBm
SAMSUNG DUAL-MODE PHONE - HEAD SAR

Robot : PCTEST

Probe Offset = 0.25 cm
Sensor Factor = 0.0108
Conversion Factor = 0.788

PCTEST Amplifier Channel Settings : 0.166 0.135 0.132

Max Location : X = 2.500, Y = -2.250, Z = 0.000 (cm) Value = 18.896

Measured Values (volts) =
1.906E-002 1.468E-002 1.252E-002 1.057E-002 9.163E-003 7.987E-003
7.103E-003 6.214E-003 5.657E-003 4.954E-003 4.589E-003 4.149E-003
3.690E-003 3.286E-003 2.904E-003 2.470E-003 2.133E-003 1.808E-003
1.545E-003 1.313E-003 1.207E-003

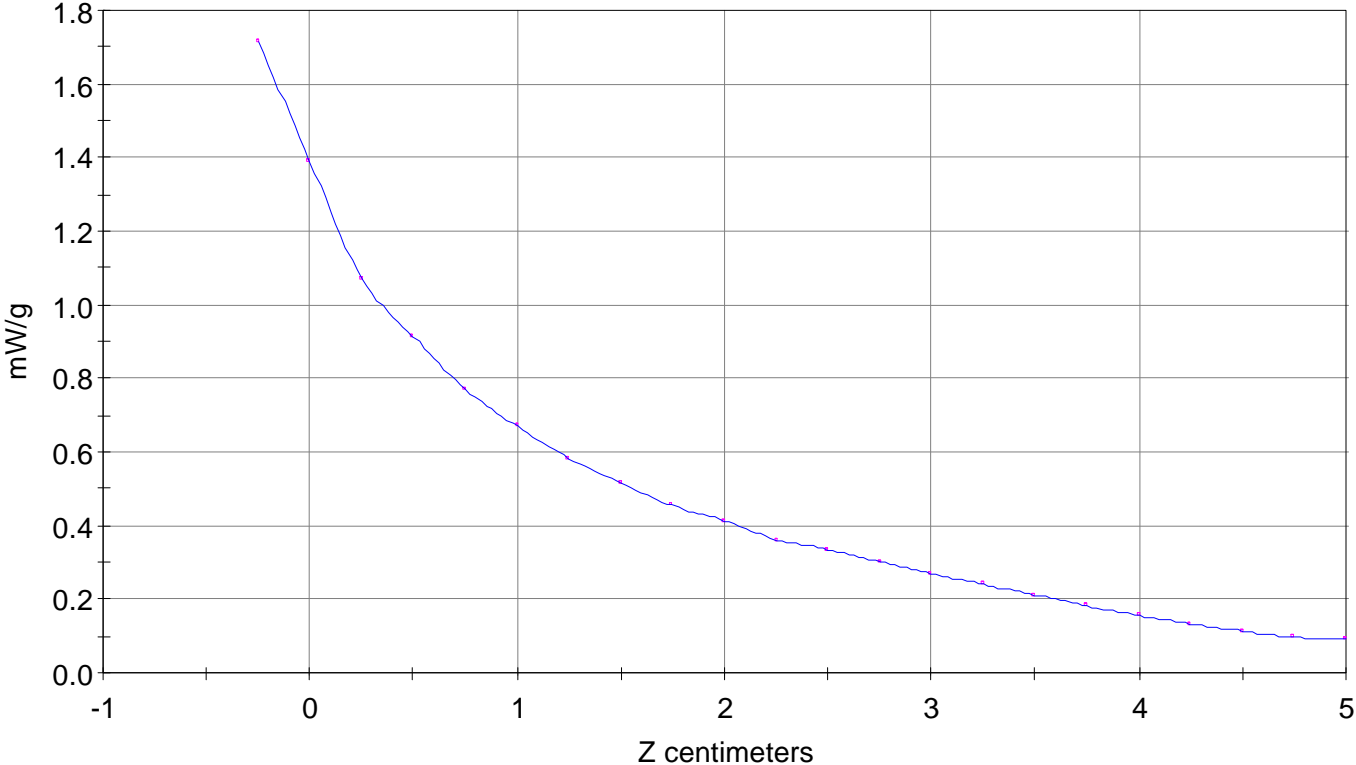
Calc. Voltage @ Surface (Vs) = 0.0235

Voltage @ 1.00 cm (Vt) = 0.0106

Ave. Voltage (Vs+Vt)/2 = 0.0171

Ave. SAR over 1 g (mW/g) = 1.2445

SAR Scan
File : 01071008_ZOOM
Start : 10-Jul-101 03:44:55 pm End : 10-Jul-101 03:54:32 pm
SAMSUNG/STH-A225/2;824.04MHz;W;Helical/Out;
Head/Left Ear;ZOOM/SAR;PCTEST/E Field/0 DegreesBrain/41.500/0.900

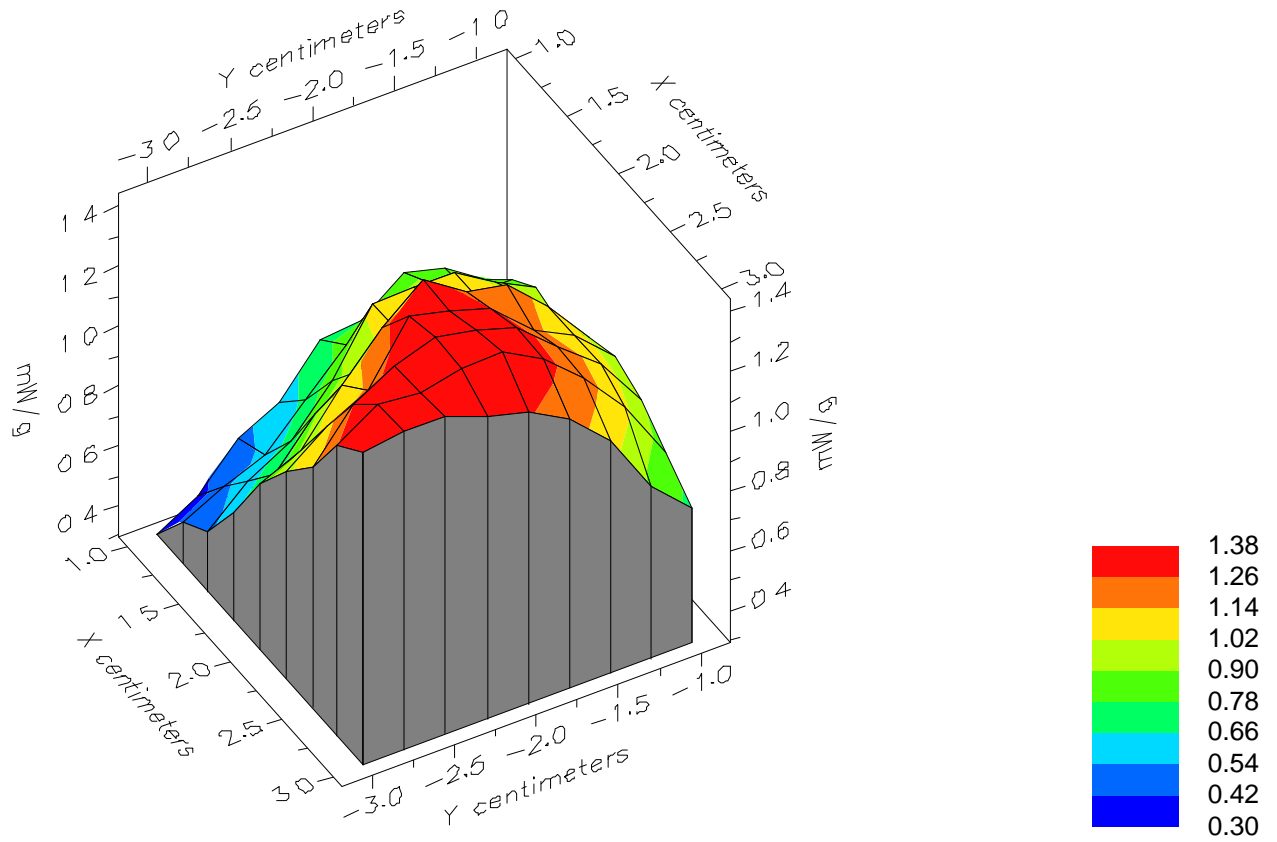


File : 01071008_ZOOM

Start : 10-Jul-101 03:44:55 pm End : 10-Jul-101 03:54:32 pm

SAMSUNG/STH-A225/2;824.04MHz;W;Helical/Out;

Head/Left Ear;ZOOM/SAR;PCTEST/E Field/0 DegreesBrain/41.500/0.900

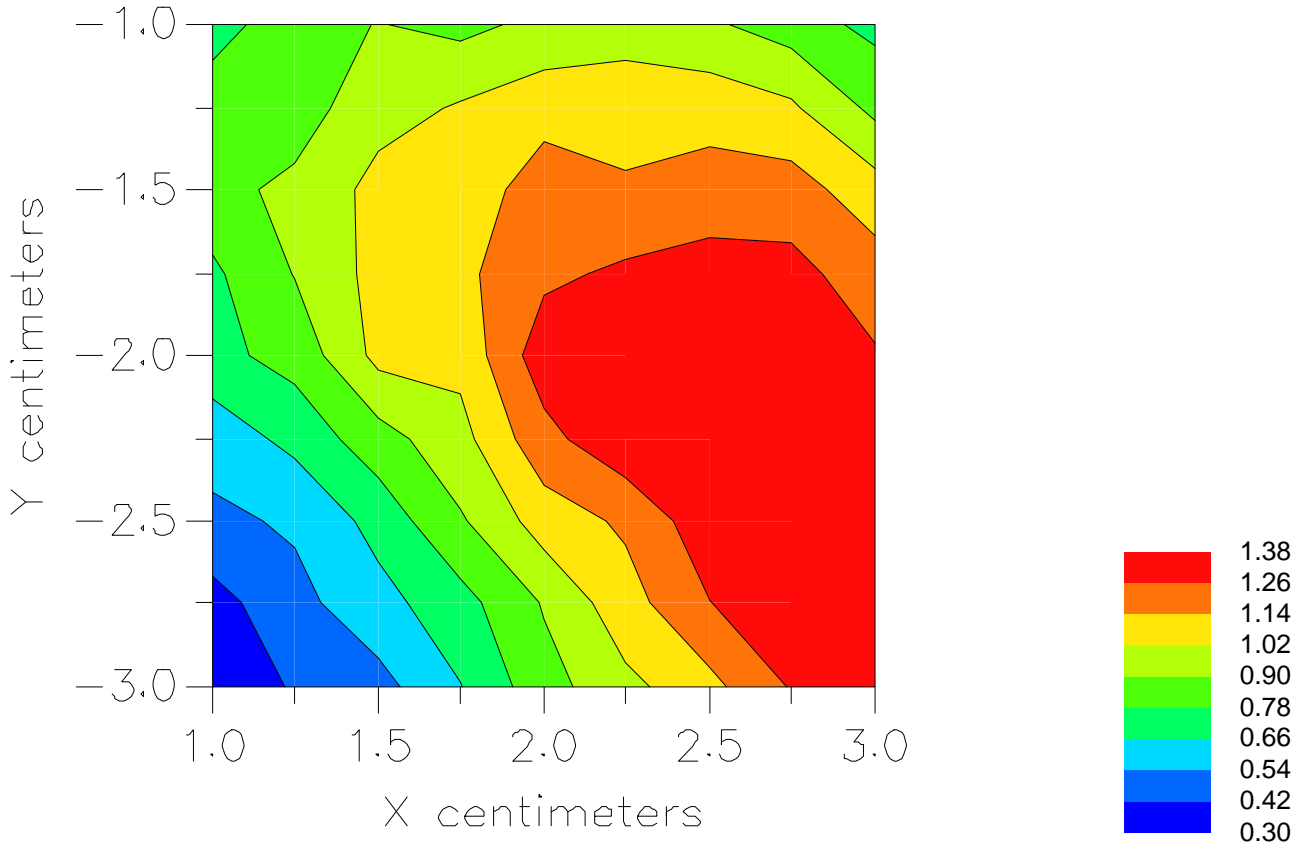


File : 01071008_ZOOM

Start : 10-Jul-101 03:44:55 pm End : 10-Jul-101 03:54:32 pm

SAMSUNG/STH-A225/2;824.04MHz;W;Helical/Out;

Head/Left Ear;ZOOM/SAR;PCTEST/E Field/0 DegreesBrain/41.500/0.900



File : c:/idx3/SYSTEM/SARMEAS3/data/Normal/01071001_ZOOM.VLT
Start : 10-Jul-101 12:08:24 pm End : 10-Jul-101 12:22:00 pm

Radio Type : SAMSUNG
Model Number : STH-A225
Serial Number : 2
Frequency : 836.49 MHz
Peak Trans. Pwr : 0.420 W
Start Trans. Pwr : 0.420 W
Antenna Type : Helical
Antenna Posn. : In
Phantom Type : Head
Phantom Posn. : Left Ear
Scan Type : ZOOM/SAR
Probe Name : PCTEST
Field Type : E Field
Orientation : 0 Degrees

Mixture Type = Brain
Mixture Dielectric Constant = 41.500
Mixture Conductivity = 0.900

Comment :
SAMSUNG DUAL-MODE PHONE - AMPS MODE
CH 0383 Conducted 26.2 dBm
SAMSUNG DUAL-MODE PHONE - HEAD SAR

Robot : PCTEST

Probe Offset = 0.25 cm
Sensor Factor = 0.0108
Conversion Factor = 0.788

PCTEST Amplifier Channel Settings : 0.166 0.135 0.132

Max Location : X = 2.750, Y = -2.250, Z = 0.000 (cm) Value = 12.929

Measured Values (volts) =
1.226E-002 9.630E-003 8.559E-003 7.429E-003 6.689E-003 6.101E-003
5.380E-003 4.943E-003 4.529E-003 4.131E-003 3.886E-003 3.542E-003
3.268E-003 3.057E-003 2.816E-003 2.586E-003 2.339E-003 2.143E-003
2.071E-003 1.941E-003 1.928E-003

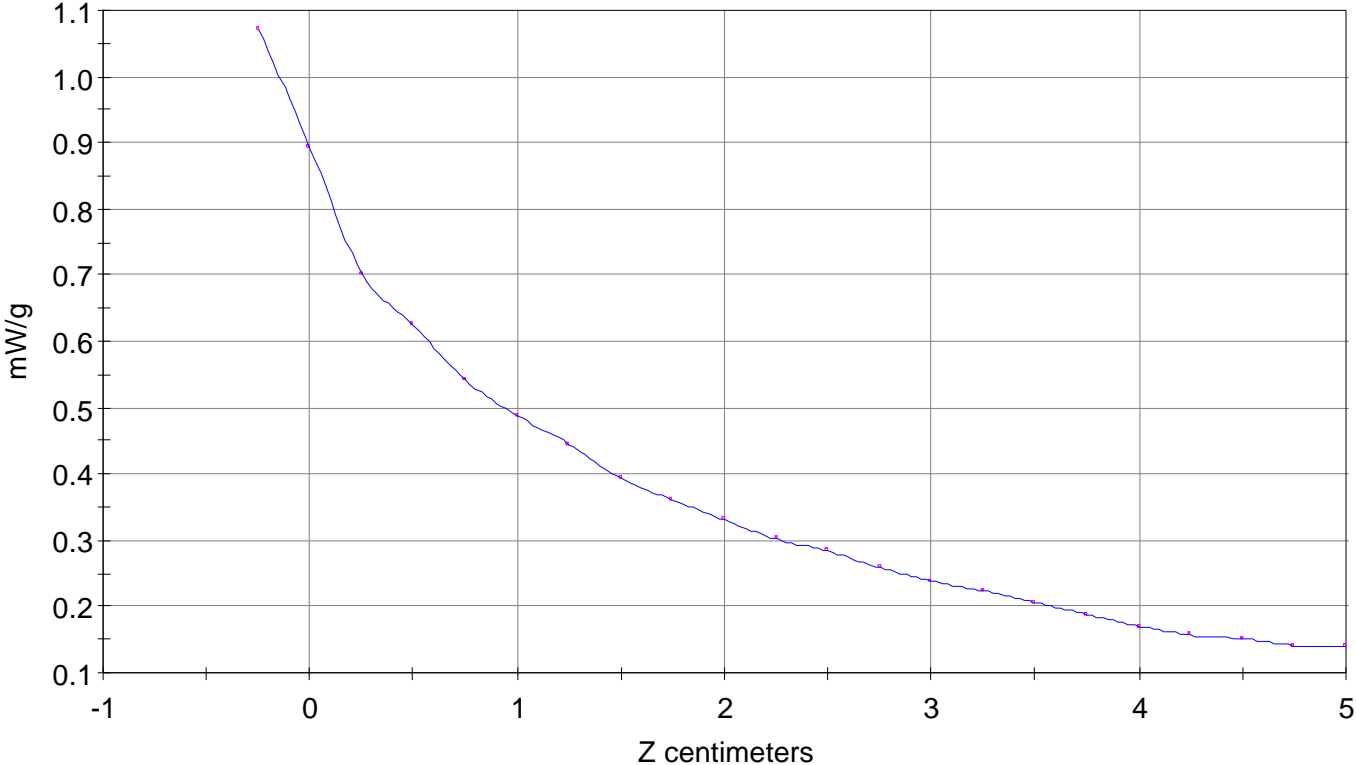
Calc. Voltage @ Surface (Vs) = 0.0147

Voltage @ 1.00 cm (Vt) = 0.0074

Ave. Voltage (Vs+Vt)/2 = 0.0111

Ave. SAR over 1 g (mW/g) = 0.8074

SAR Scan
File : 01071001_ZOOM
Start : 10-Jul-101 12:08:24 pm End : 10-Jul-101 12:22:00 pm
SAMSUNG/STH-A225/2;836.49MHz;W;Helical/In;
Head/Left Ear;ZOOM/SAR;PCTEST/E Field/0 DegreesBrain/41.500/0.900

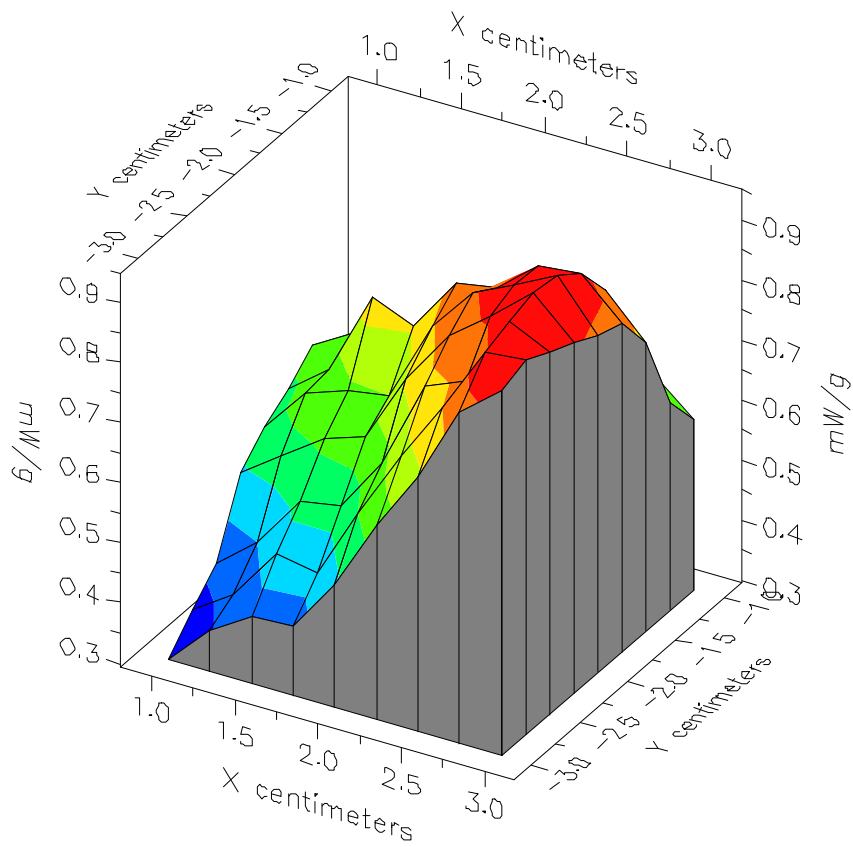


File : 01071001_ZOOM

Start : 10-Jul-101 12:08:24 pm End : 10-Jul-101 12:22:00 pm

SAMSUNG/STH-A225/2;836.49MHz;W;Helical/In;

Head/Left Ear;ZOOM/SAR;PCTEST/E Field/0 DegreesBrain/41.500/0.900

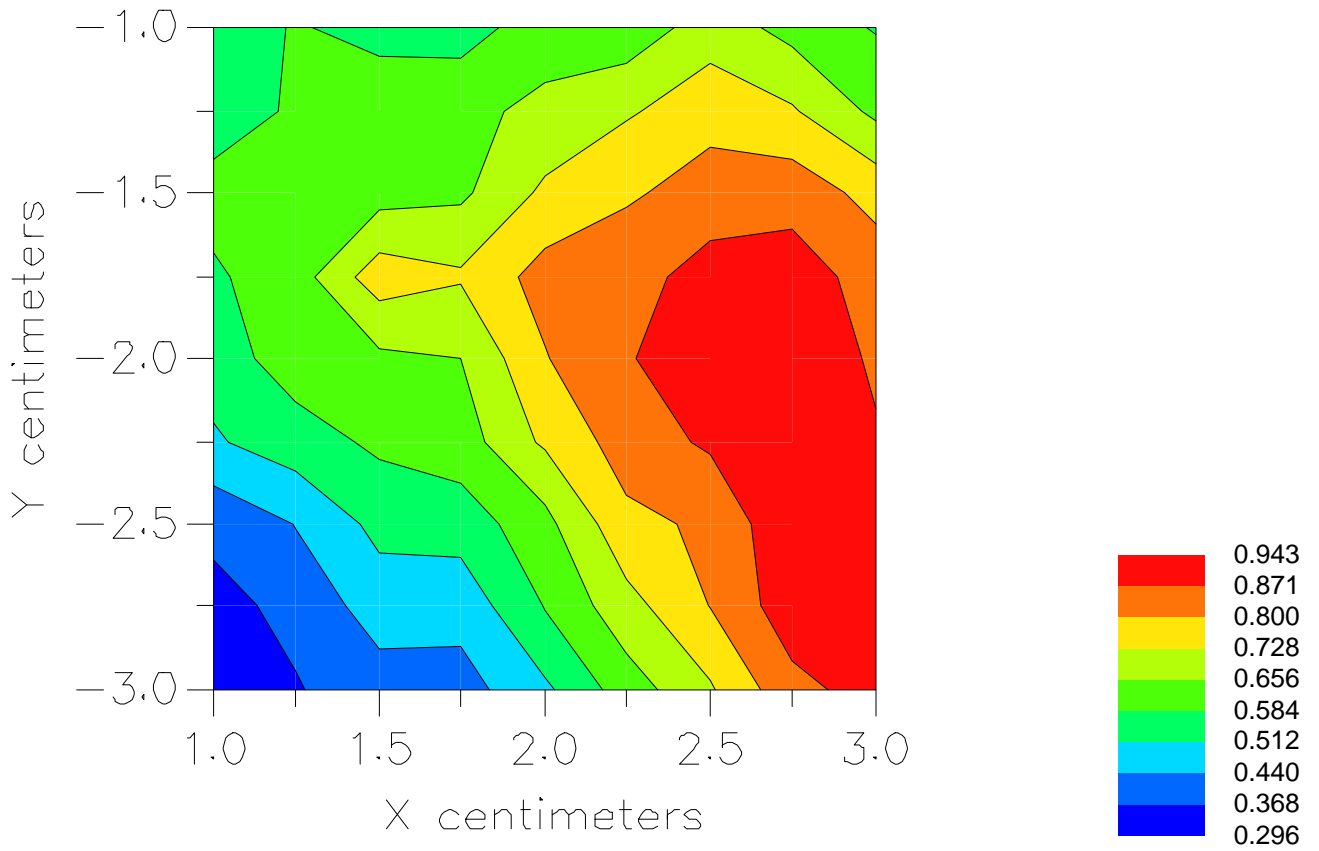


File : 01071001_ZOOM

Start : 10-Jul-101 12:08:24 pm End : 10-Jul-101 12:22:00 pm

SAMSUNG/STH-A225/2;836.49MHz;W;Helical/In;

Head/Left Ear;ZOOM/SAR;PCTEST/E Field/0 DegreesBrain/41.500/0.900



File : c:/idx3/SYSTEM/SARMEAS3/data/Normal/01071003_ZOOM.VLT
Start : 10-Jul-101 12:23:56 pm End : 10-Jul-101 12:37:11 pm

Radio Type : SAMSUNG
Model Number : STH-A225
Serial Number : 2
Frequency : 836.49 MHz
Peak Trans. Pwr : 0.420 W
Start Trans. Pwr : 0.420 W
Antenna Type : Helical
Antenna Posn. : Out
Phantom Type : Head
Phantom Posn. : Left Ear
Scan Type : ZOOM/SAR
Probe Name : PCTEST
Field Type : E Field
Orientation : 0 Degrees

Mixture Type = Brain
Mixture Dielectric Constant = 41.500
Mixture Conductivity = 0.900

Comment :
SAMSUNG DUAL-MODE PHONE - AMPS MODE
CH 0383 Conducted 26.2 dBm
SAMSUNG DUAL-MODE PHONE - HEAD SAR

Robot : PCTEST

Probe Offset = 0.25 cm
Sensor Factor = 0.0108
Conversion Factor = 0.788

PCTEST Amplifier Channel Settings : 0.166 0.135 0.132

Max Location : X = 2.750, Y = -2.250, Z = 0.000 (cm) Value = 14.279

Measured Values (volts) =
1.436E-002 1.166E-002 1.018E-002 8.829E-003 7.876E-003 7.002E-003
6.346E-003 5.652E-003 5.160E-003 4.640E-003 4.370E-003 4.006E-003
3.668E-003 3.369E-003 3.127E-003 2.839E-003 2.593E-003 2.368E-003
2.226E-003 2.137E-003 2.063E-003

Calc. Voltage @ Surface (Vs) = 0.0171

Voltage @ 1.00 cm (Vt) = 0.0088

Ave. Voltage (Vs+Vt)/2 = 0.0129

Ave. SAR over 1 g (mW/g) = 0.9444

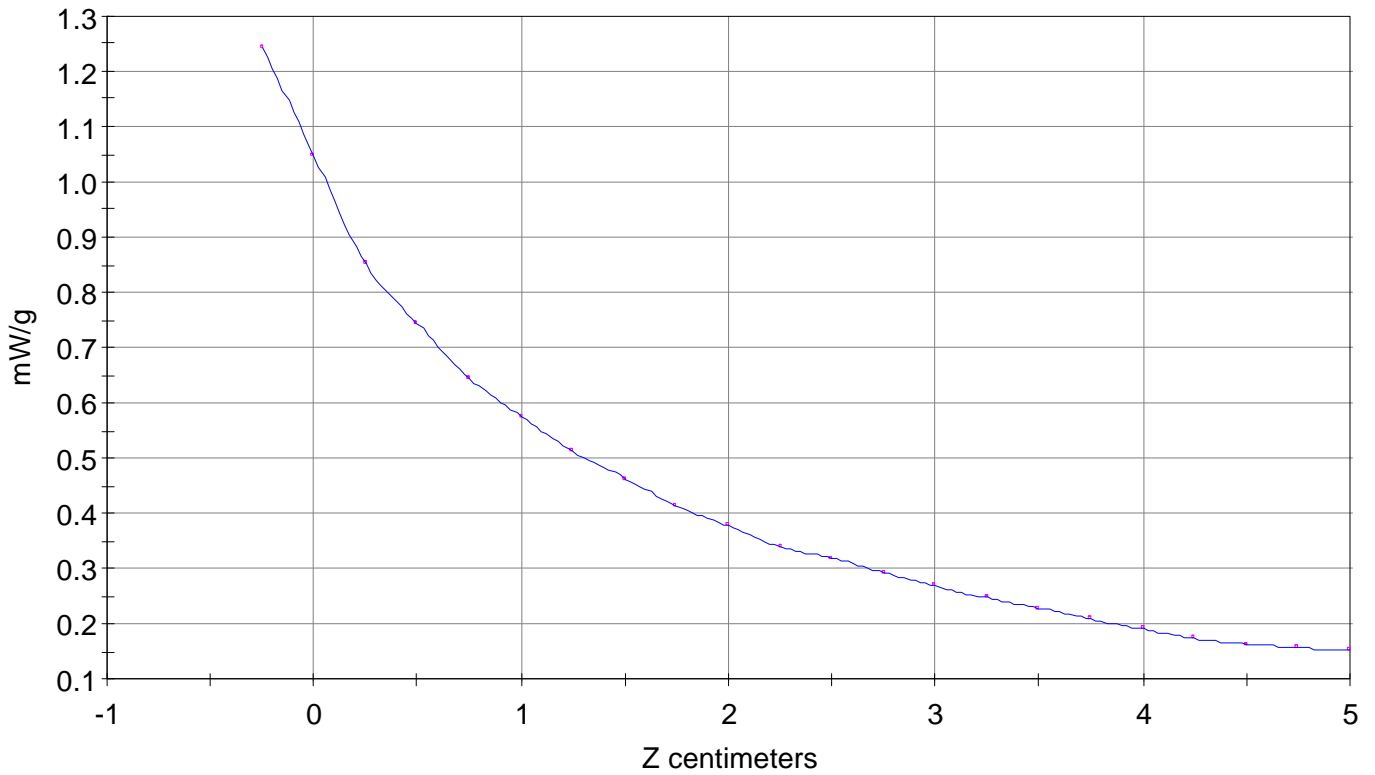
SAR Scan

File : 01071003_ZOOM

Start : 10-Jul-101 12:23:56 pm End : 10-Jul-101 12:37:11 pm

SAMSUNG/STH-A225/2;836.49MHz;W;Helical/Out;

Head/Left Ear;ZOOM/SAR;PCTEST/E Field/0 DegreesBrain/41.500/0.900

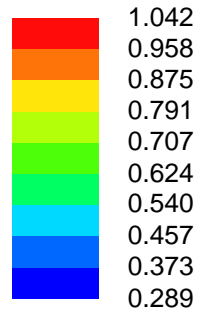
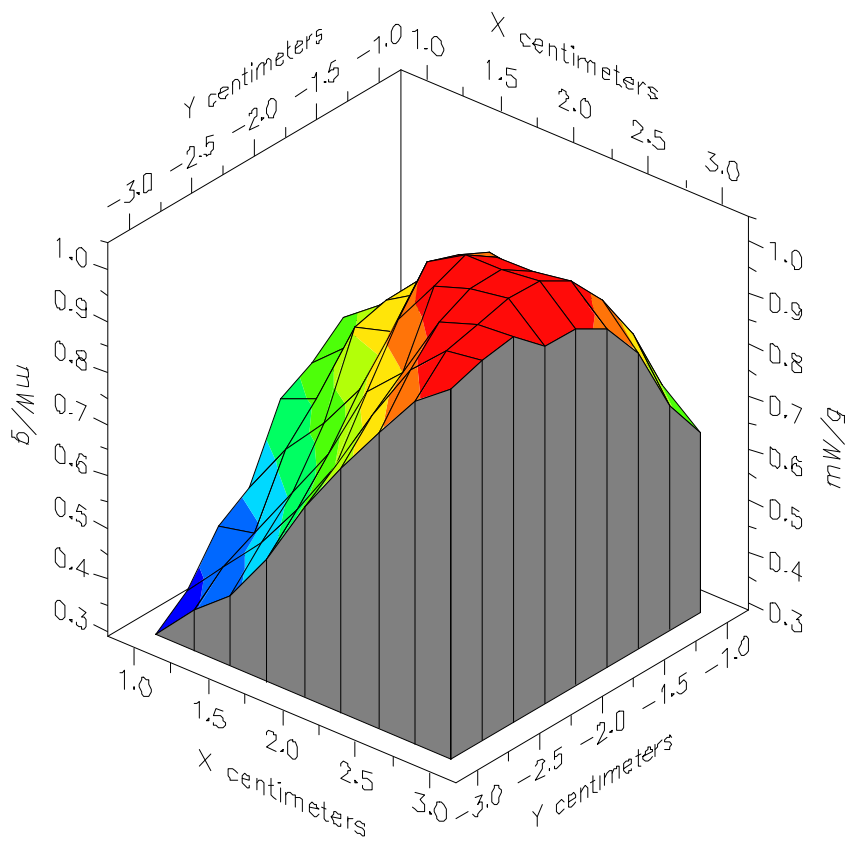


File : 01071003_ZOOM

Start : 10-Jul-101 12:23:56 pm End : 10-Jul-101 12:37:11 pm

SAMSUNG/STH-A225/2;836.49MHz;W;Helical/Out;

Head/Left Ear;ZOOM/SAR;PCTEST/E Field/0 DegreesBrain/41.500/0.900

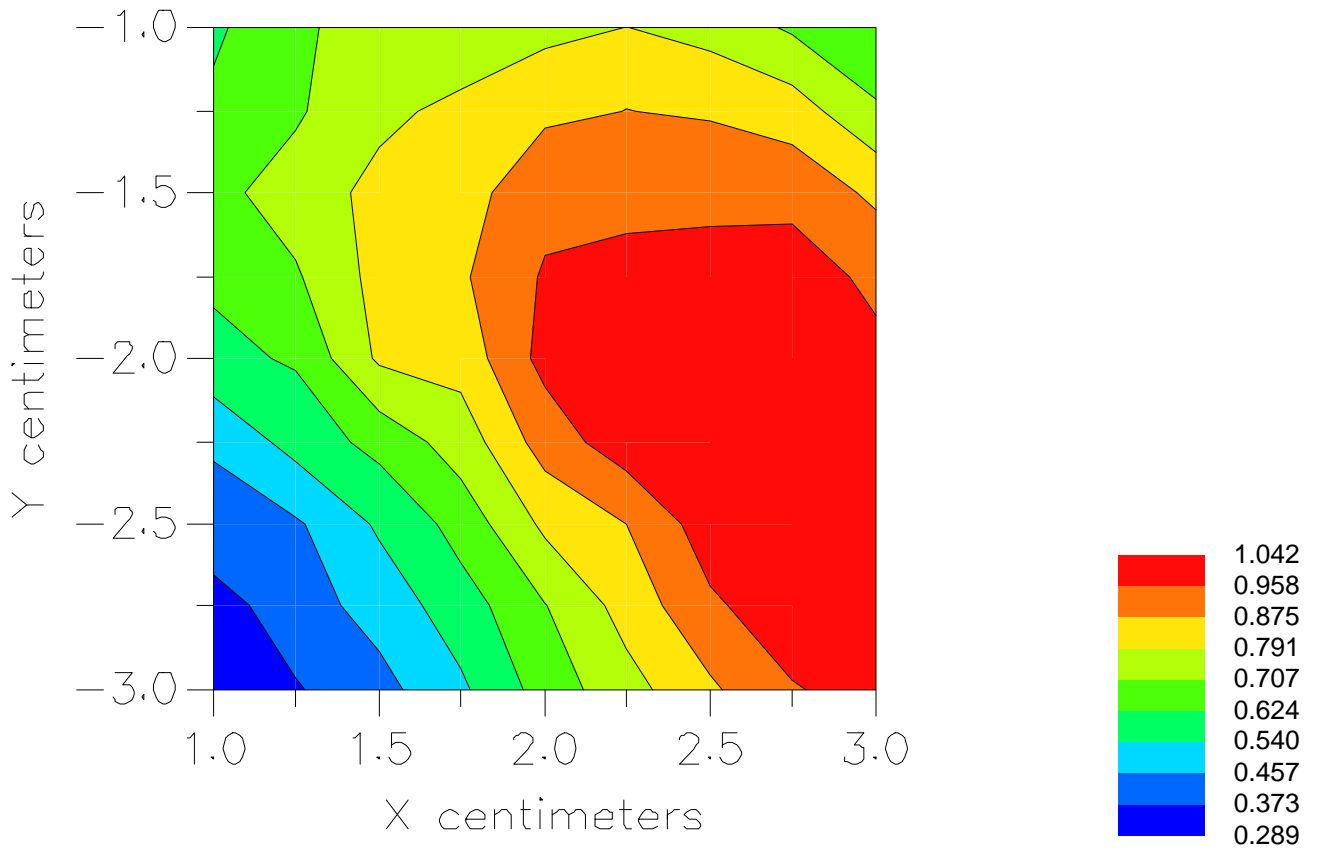


File : 01071003_ZOOM

Start : 10-Jul-101 12:23:56 pm End : 10-Jul-101 12:37:11 pm

SAMSUNG/STH-A225/2;836.49MHz;W;Helical/Out;

Head/Left Ear;ZOOM/SAR;PCTEST/E Field/0 DegreesBrain/41.500/0.900



File : c:/idx3/SYSTEM/SARMEAS3/data/Normal/01071007_ZOOM.VLT
Start : 10-Jul-101 03:28:43 pm End : 10-Jul-101 03:38:20 pm

Radio Type : SAMSUNG
Model Number : STH-A225
Serial Number : 2
Frequency : 848.97 MHz
Peak Trans. Pwr : 0.420 W
Start Trans. Pwr : 0.420 W
Antenna Type : Helical
Antenna Posn. : In
Phantom Type : Head
Phantom Posn. : Left Ear
Scan Type : ZOOM/SAR
Probe Name : PCTEST
Field Type : E Field
Orientation : 0 Degrees

Mixture Type = Brain
Mixture Dielectric Constant = 41.500
Mixture Conductivity = 0.900

Comment :
SAMSUNG DUAL-MODE PHONE - AMPS MODE
CH 0799 Conducted 26.2 dBm
SAMSUNG DUAL-MODE PHONE - HEAD SAR

Robot : PCTEST

Probe Offset = 0.25 cm
Sensor Factor = 0.0108
Conversion Factor = 0.788

PCTEST Amplifier Channel Settings : 0.166 0.135 0.132

Max Location : X = 2.500, Y = -2.250, Z = 0.000 (cm) Value = 14.926

Measured Values (volts) =
1.480E-002 1.122E-002 9.364E-003 8.126E-003 6.930E-003 6.100E-003
5.385E-003 4.738E-003 4.270E-003 3.843E-003 3.437E-003 3.197E-003
2.796E-003 2.571E-003 2.290E-003 1.935E-003 1.703E-003 1.447E-003
1.222E-003 1.073E-003 9.885E-004

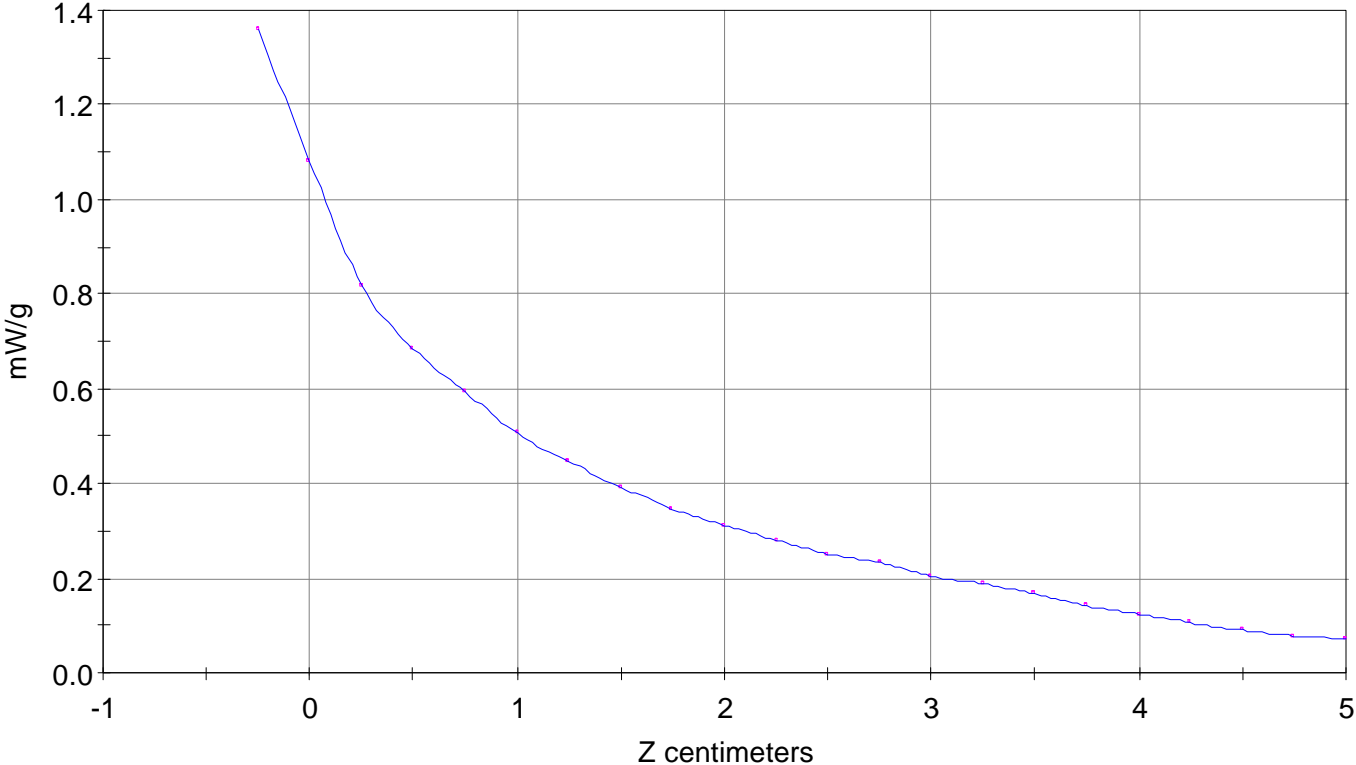
Calc. Voltage @ Surface (Vs) = 0.0186

Voltage @ 1.00 cm (Vt) = 0.0081

Ave. Voltage (Vs+Vt)/2 = 0.0134

Ave. SAR over 1 g (mW/g) = 0.9763

SAR Scan
File : 01071007_ZOOM
Start : 10-Jul-101 03:28:43 pm End : 10-Jul-101 03:38:20 pm
SAMSUNG/STH-A225/2;848.97MHz;W;Helical/In;
Head/Left Ear;ZOOM/SAR;PCTEST/E Field/0 DegreesBrain/41.500/0.900

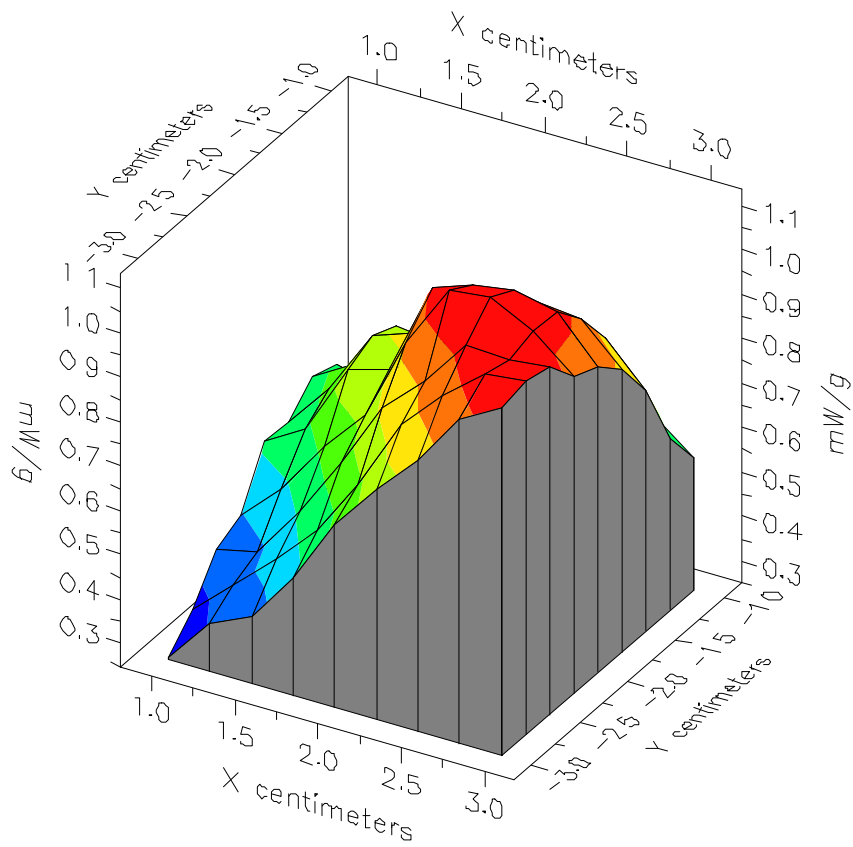


File : 01071007_ZOOM

Start : 10-Jul-101 03:28:43 pm End : 10-Jul-101 03:38:20 pm

SAMSUNG/STH-A225/2;848.97MHz;W;Helical/In;

Head/Left Ear;ZOOM/SAR;PCTEST/E Field/0 DegreesBrain/41.500/0.900

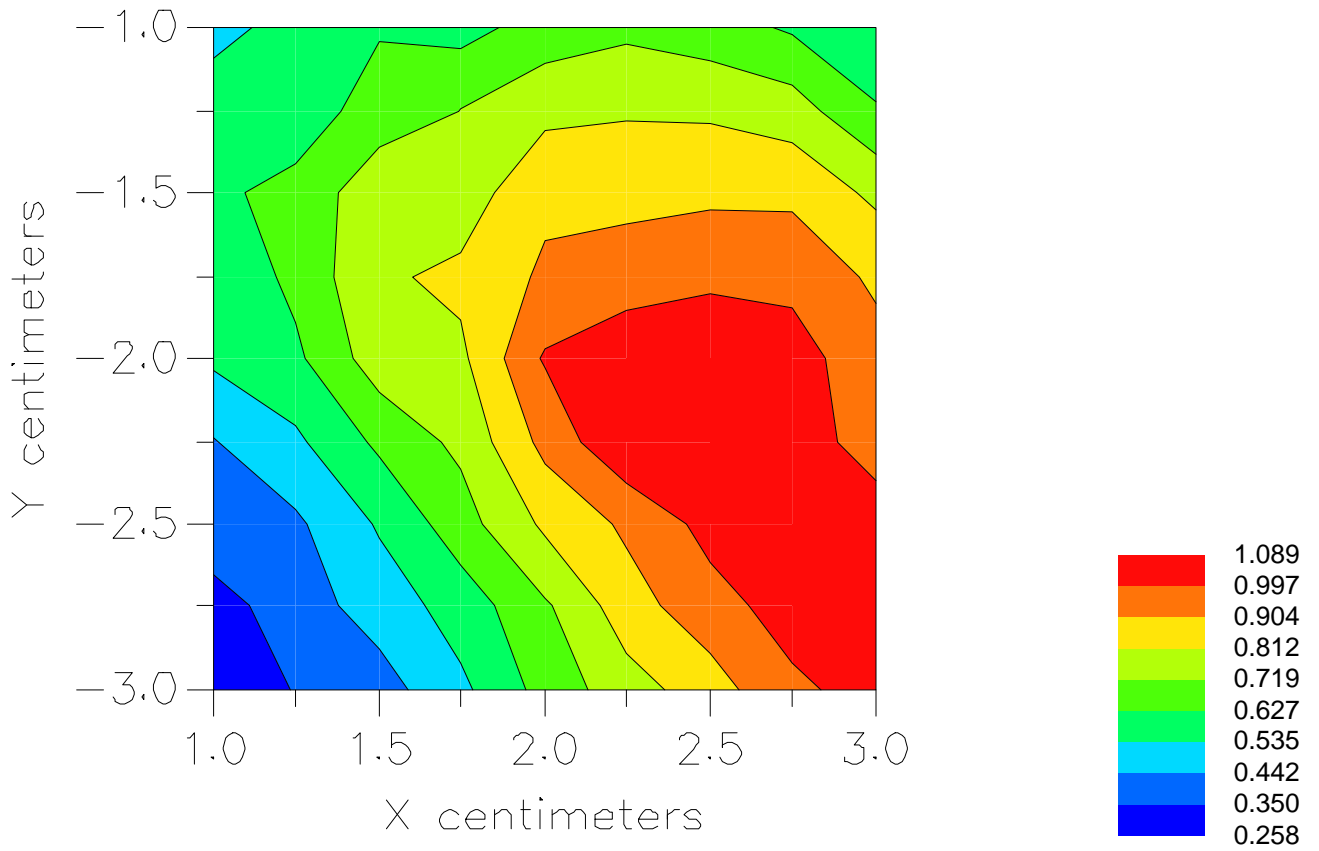


File : 01071007_ZOOM

Start : 10-Jul-101 03:28:43 pm End : 10-Jul-101 03:38:20 pm

SAMSUNG/STH-A225/2;848.97MHz;W;Helical/In;

Head/Left Ear;ZOOM/SAR;PCTEST/E Field/0 DegreesBrain/41.500/0.900



File : c:/idx3/SYSTEM/SARMEAS3/data/Normal/01071005_ZOOM.VLT
Start : 10-Jul-101 03:17:34 pm End : 10-Jul-101 03:27:11 pm

Radio Type : SAMSUNG
Model Number : STH-A225
Serial Number : 2
Frequency : 848.97 MHz
Peak Trans. Pwr : 0.420 W
Start Trans. Pwr : 0.420 W
Antenna Type : Helical
Antenna Posn. : Out
Phantom Type : Head
Phantom Posn. : Left Ear
Scan Type : ZOOM/SAR
Probe Name : PCTEST
Field Type : E Field
Orientation : 0 Degrees

Mixture Type = Brain
Mixture Dielectric Constant = 41.500
Mixture Conductivity = 0.900

Comment :
SAMSUNG DUAL-MODE PHONE - AMPS MODE
CH 0799 Conducted 26.2 dBm
SAMSUNG DUAL-MODE PHONE - HEAD SAR

Robot : PCTEST

Probe Offset = 0.25 cm
Sensor Factor = 0.0108
Conversion Factor = 0.788

PCTEST Amplifier Channel Settings : 0.166 0.135 0.132

Max Location : X = 2.750, Y = -2.250, Z = 0.000 (cm) Value = 19.766

Measured Values (volts) =
1.985E-002 1.555E-002 1.336E-002 1.129E-002 9.958E-003 8.686E-003
7.729E-003 6.769E-003 6.045E-003 5.311E-003 4.831E-003 4.245E-003
3.781E-003 3.316E-003 2.936E-003 2.511E-003 2.140E-003 1.752E-003
1.540E-003 1.373E-003 1.255E-003

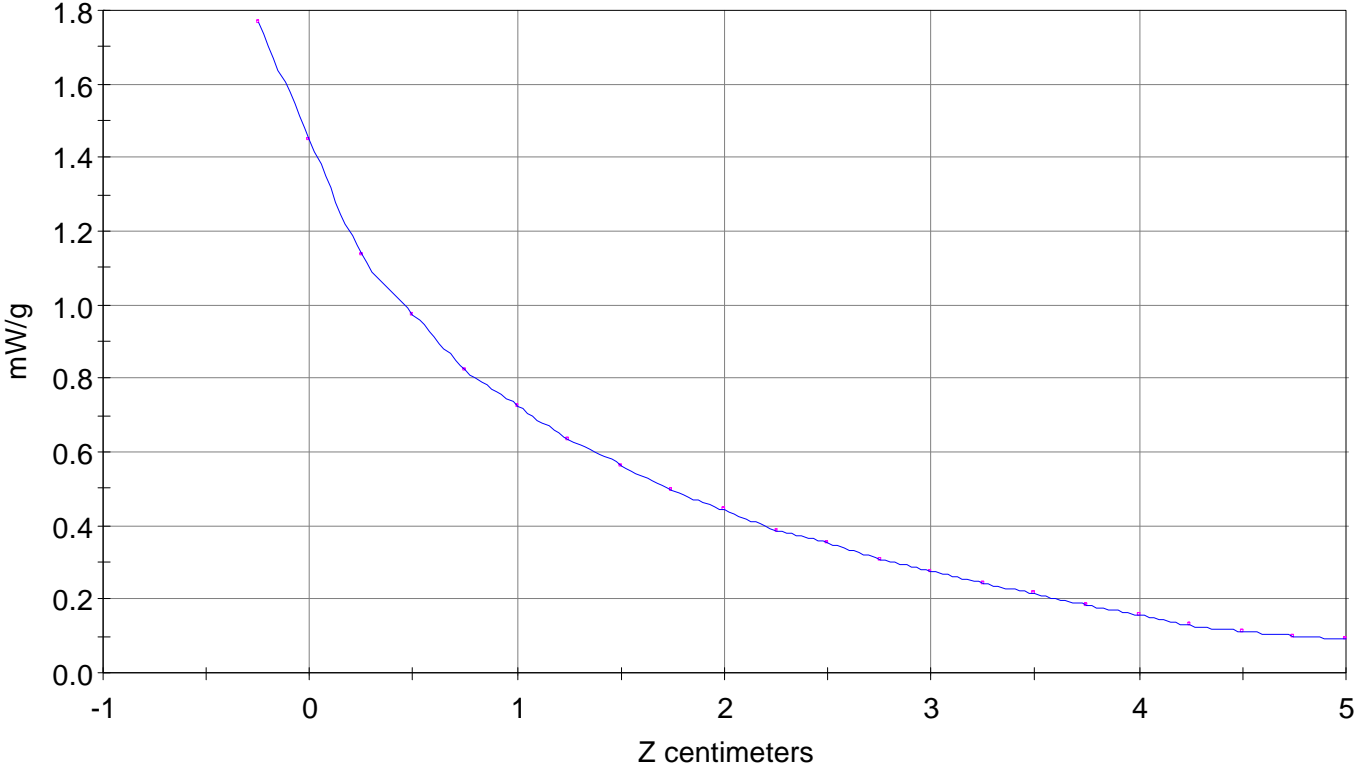
Calc. Voltage @ Surface (Vs) = 0.0242

Voltage @ 1.00 cm (Vt) = 0.0113

Ave. Voltage (Vs+Vt)/2 = 0.0178

Ave. SAR over 1 g (mW/g) = 1.2952

SAR Scan
File : 01071005_ZOOM
Start : 10-Jul-101 03:17:34 pm End : 10-Jul-101 03:27:11 pm
SAMSUNG/STH-A225/2;848.97MHz;W;Helical/Out;
Head/Left Ear;ZOOM/SAR;PCTEST/E Field/0 DegreesBrain/41.500/0.900

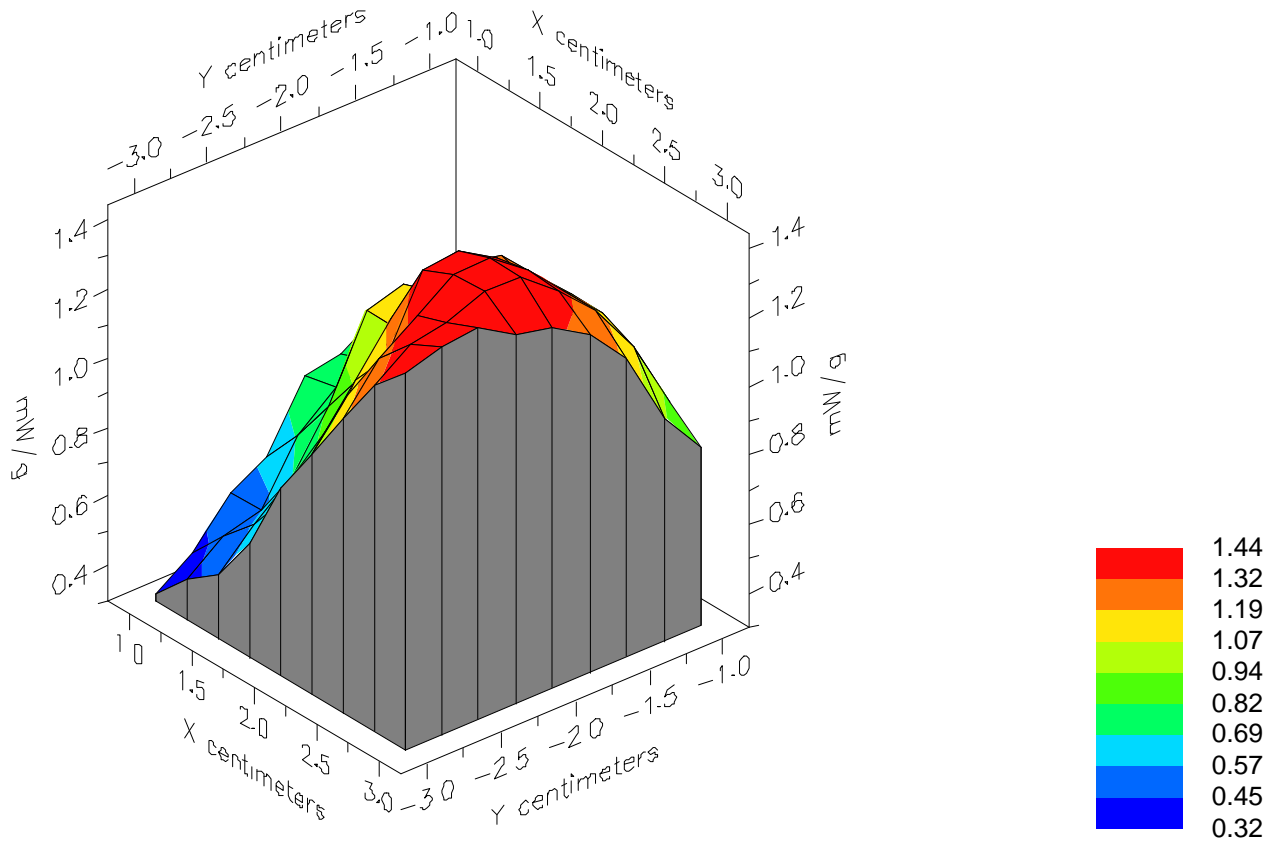


File : 01071005_ZOOM

Start : 10-Jul-101 03:17:34 pm End : 10-Jul-101 03:27:11 pm

SAMSUNG/STH-A225/2;848.97MHz;W;Helical/Out;

Head/Left Ear;ZOOM/SAR;PCTEST/E Field/0 DegreesBrain/41.500/0.900

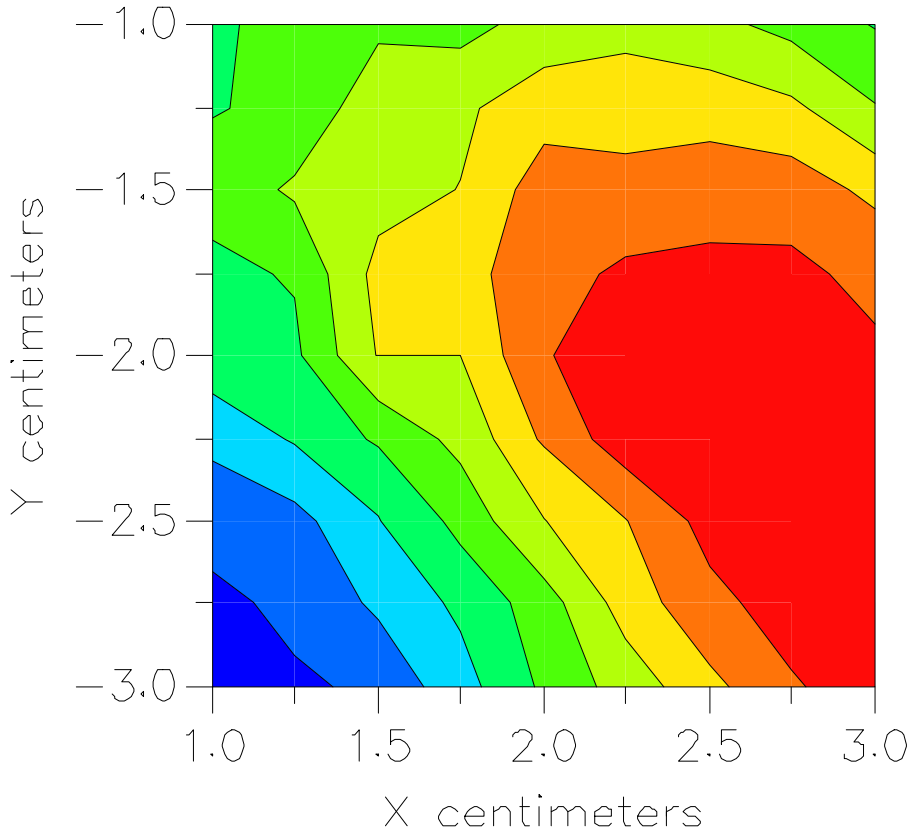


File : 01071005_ZOOM

Start : 10-Jul-101 03:17:34 pm End : 10-Jul-101 03:27:11 pm

SAMSUNG/STH-A225/2;848.97MHz;W;Helical/Out;

Head/Left Ear;ZOOM/SAR;PCTEST/E Field/0 DegreesBrain/41.500/0.900



File : c:/idx3/SYSTEM/SARMEAS3/data/Normal/01071106_ZOOM.VLT
Start : 11-Jul-101 11:01:15 am End : 11-Jul-101 11:10:53 am

Radio Type : SAMSUNG
Model Number : STH-A225
Serial Number : 2
Frequency : 848.97 MHz
Peak Trans. Pwr : 0.450 W
Start Trans. Pwr : 0.450 W
Antenna Type : Helical
Antenna Posn. : In
Phantom Type : Head
Phantom Posn. : Left Ear
Scan Type : ZOOM/SAR
Probe Name : PCTEST
Field Type : E Field
Orientation : 0 Degrees

Mixture Type = Brain
Mixture Dielectric Constant = 41.500
Mixture Conductivity = 0.900

Comment :
SAMSUNG DUAL-MODE PHONE - TDMA MODE
CH 0799 Conducted 26.5 dBm
SAMSUNG DUAL-MODE PHONE - HEAD SAR

Robot : PCTEST

Probe Offset = 0.25 cm
Sensor Factor = 0.0108
Conversion Factor = 0.788

PCTEST Amplifier Channel Settings : 0.166 0.135 0.132

Max Location : X = 2.750, Y = -2.500, Z = 0.000 (cm) Value = 8.740

Measured Values (volts) =
8.407E-003 6.882E-003 6.114E-003 3.837E-003 4.927E-003 3.269E-003
2.902E-003 3.687E-003 3.159E-003 3.046E-003 2.981E-003 2.336E-003
2.791E-003 2.615E-003 2.391E-003 2.316E-003 2.198E-003 1.997E-003
1.925E-003 1.809E-003 1.858E-003

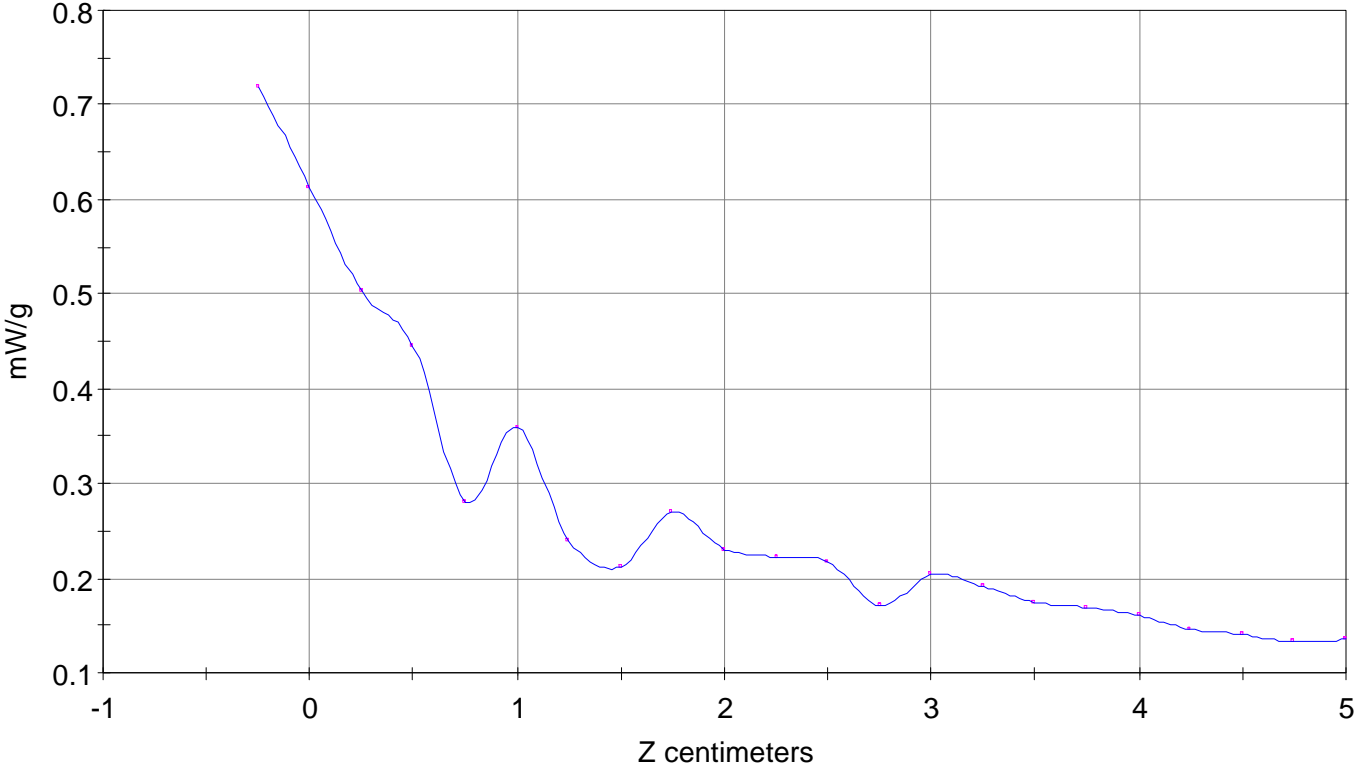
Calc. Voltage @ Surface (Vs) = 0.0099

Voltage @ 1.00 cm (Vt) = 0.0038

Ave. Voltage (Vs+Vt)/2 = 0.0069

Ave. SAR over 1 g (mW/g) = 0.4999

SAR Scan
File : 01071106_ZOOM
Start : 11-Jul-101 11:01:15 am End : 11-Jul-101 11:10:53 am
SAMSUNG/STH-A225/2;848.97MHz;W;Helical/In;
Head/Left Ear;ZOOM/SAR;PCTEST/E Field/0 DegreesBrain/41.500/0.900

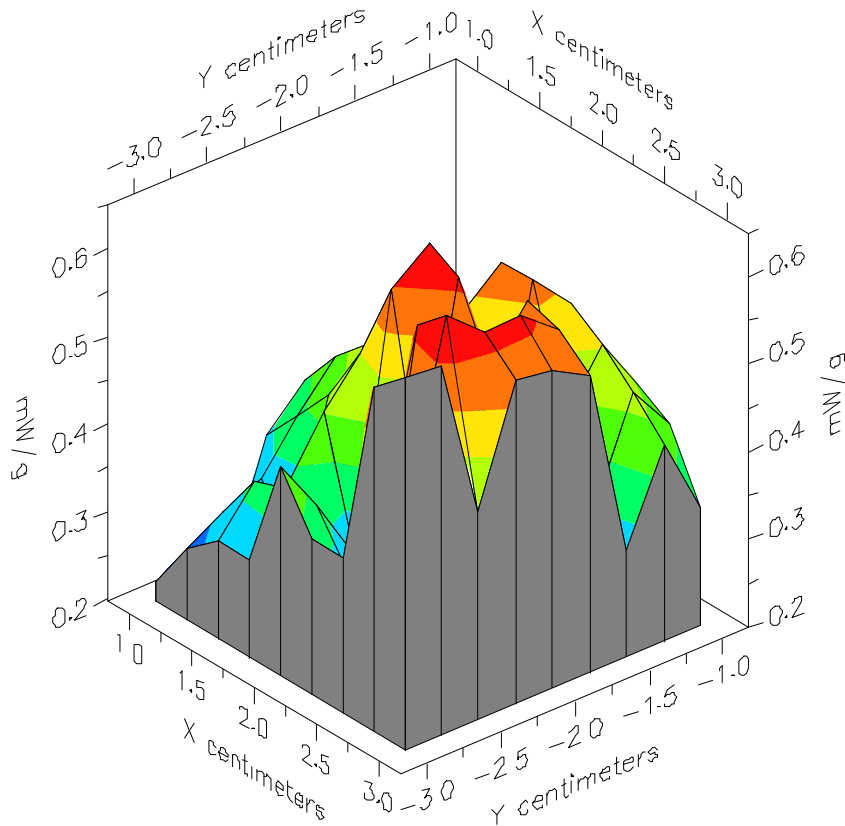


File : 01071106_ZOOM

Start : 11-Jul-101 11:01:15 am End : 11-Jul-101 11:10:53 am

SAMSUNG/STH-A225/2;848.97MHz;W;Helical/In;

Head/Left Ear;ZOOM/SAR;PCTEST/E Field/0 DegreesBrain/41.500/0.900

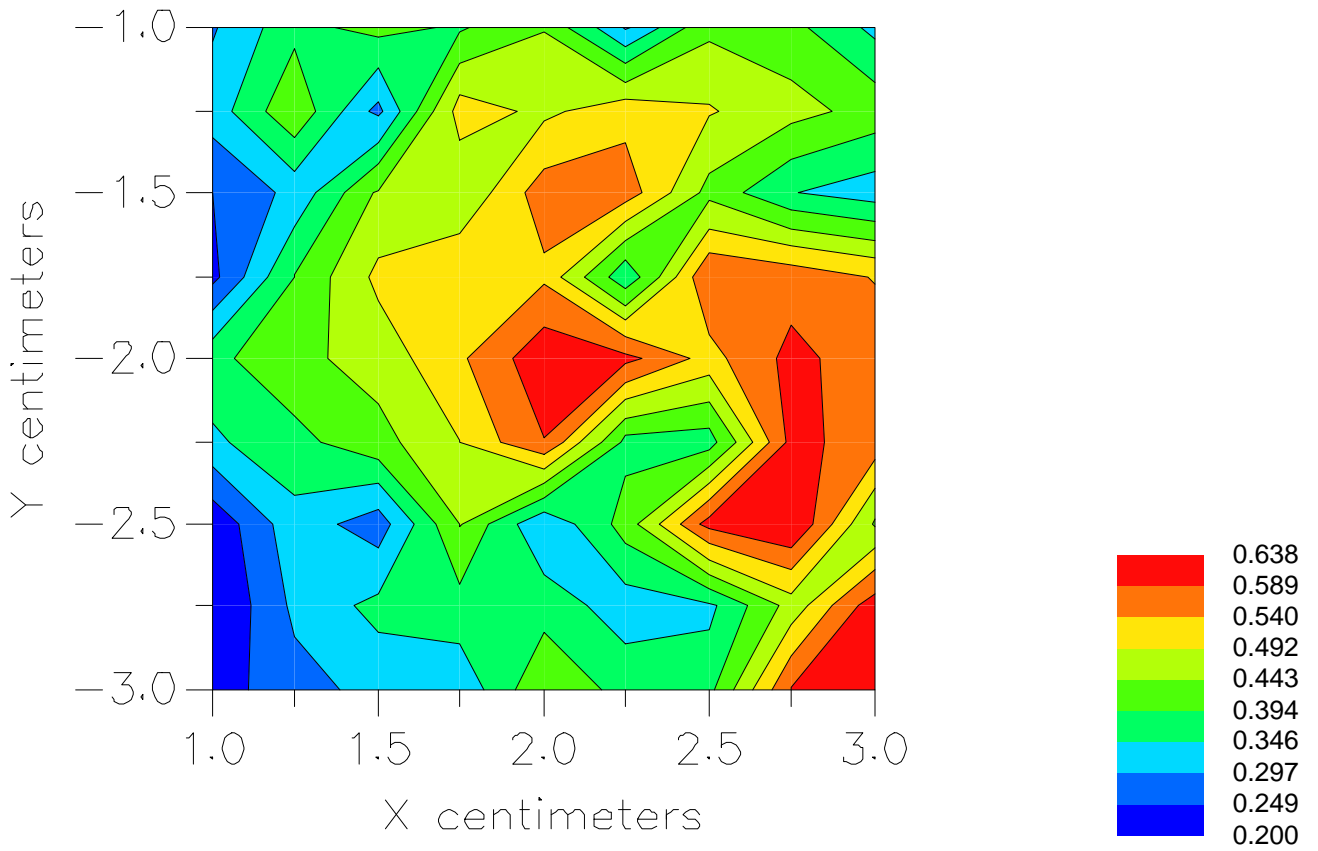


File : 01071106_ZOOM

Start : 11-Jul-101 11:01:15 am End : 11-Jul-101 11:10:53 am

SAMSUNG/STH-A225/2;848.97MHz;W;Helical/In;

Head/Left Ear;ZOOM/SAR;PCTEST/E Field/0 DegreesBrain/41.500/0.900



File : c:/idx3/SYSTEM/SARMEAS3/data/Normal/01071105_ZOOM.VLT
Start : 11-Jul-101 10:46:33 am End : 11-Jul-101 10:59:47 am

Radio Type : SAMSUNG
Model Number : STH-A225
Serial Number : 2
Frequency : 848.97 MHz
Peak Trans. Pwr : 0.400 W
Start Trans. Pwr : 0.400 W
Antenna Type : Helical
Antenna Posn. : Out
Phantom Type : Head
Phantom Posn. : Left Ear
Scan Type : ZOOM/SAR
Probe Name : PCTEST
Field Type : E Field
Orientation : 0 Degrees

Mixture Type = Brain
Mixture Dielectric Constant = 41.500
Mixture Conductivity = 0.900

Comment :
SAMSUNG DUAL-MODE PHONE - TDMA MODE
CH 0799 Conducted 26.0 dBm
SAMSUNG DUAL-MODE PHONE - HEAD SAR

Robot : PCTEST

Probe Offset = 0.25 cm
Sensor Factor = 0.0108
Conversion Factor = 0.788

PCTEST Amplifier Channel Settings : 0.166 0.135 0.132

Max Location : X = 2.750, Y = -2.000, Z = 0.000 (cm) Value = 10.767

Measured Values (volts) =
1.036E-002 8.747E-003 4.869E-003 6.690E-003 4.204E-003 5.360E-003
3.710E-003 3.722E-003 3.318E-003 3.492E-003 3.533E-003 3.305E-003
2.581E-003 2.437E-003 2.693E-003 2.359E-003 2.363E-003 2.120E-003
2.138E-003 2.071E-003 2.013E-003

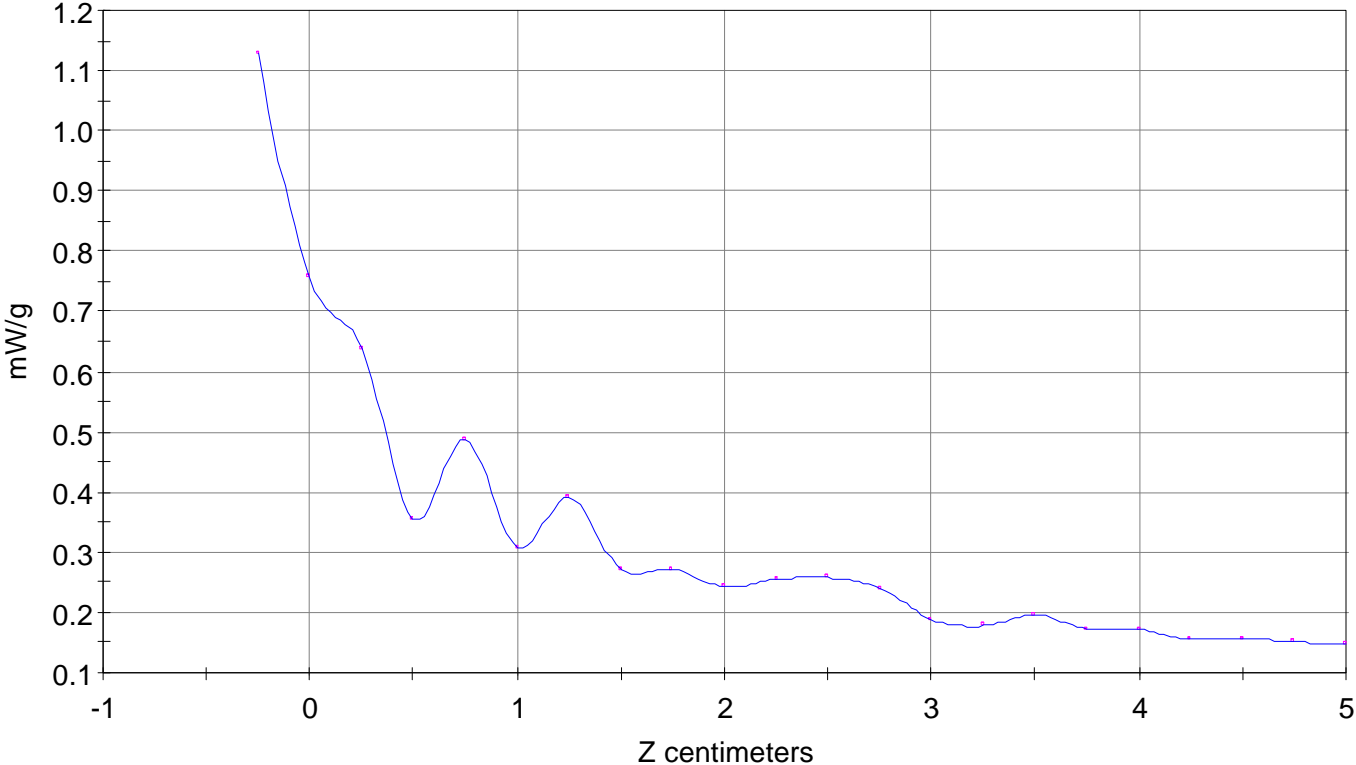
Calc. Voltage @ Surface (Vs) = 0.0154

Voltage @ 1.00 cm (Vt) = 0.0067

Ave. Voltage (Vs+Vt)/2 = 0.0111

Ave. SAR over 1 g (mW/g) = 0.8076

SAR Scan
File : 01071105_ZOOM
Start : 11-Jul-101 10:46:33 am End : 11-Jul-101 10:59:47 am
SAMSUNG/STH-A225/2;848.97MHz;W;Helical/Out;
Head/Left Ear;ZOOM/SAR;PCTEST/E Field/0 DegreesBrain/41.500/0.900

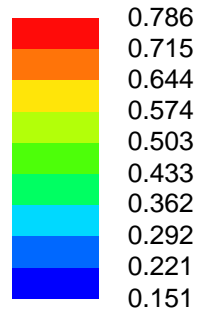
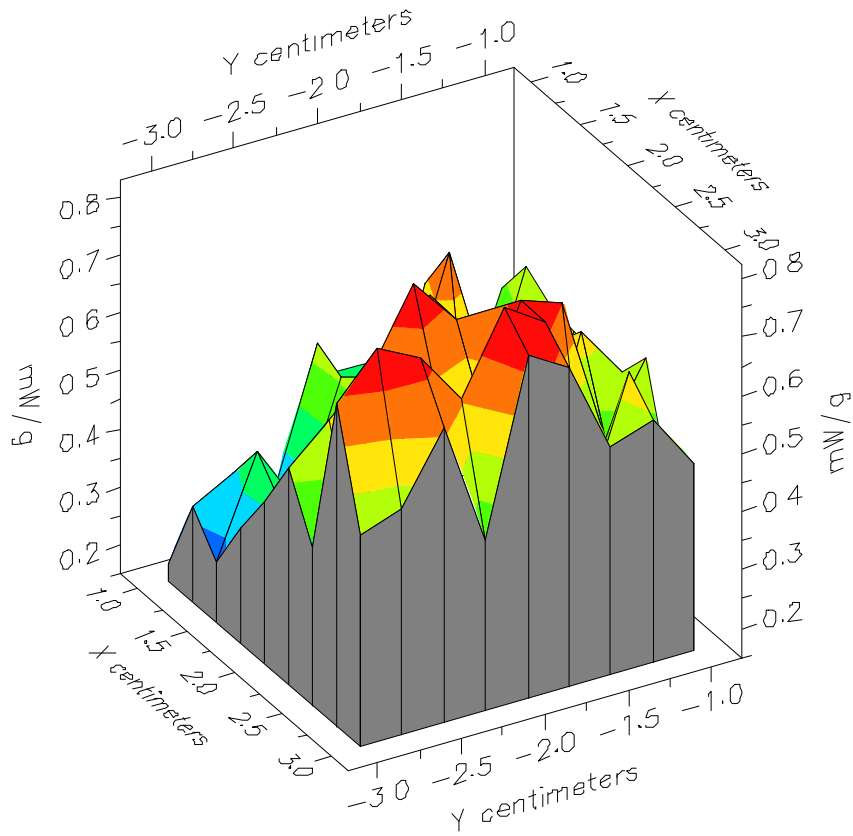


File : 01071105_ZOOM

Start : 11-Jul-101 10:46:33 am End : 11-Jul-101 10:59:47 am

SAMSUNG/STH-A225/2;848.97MHz;W;Helical/Out;

Head/Left Ear;ZOOM/SAR;PCTEST/E Field/0 DegreesBrain/41.500/0.900

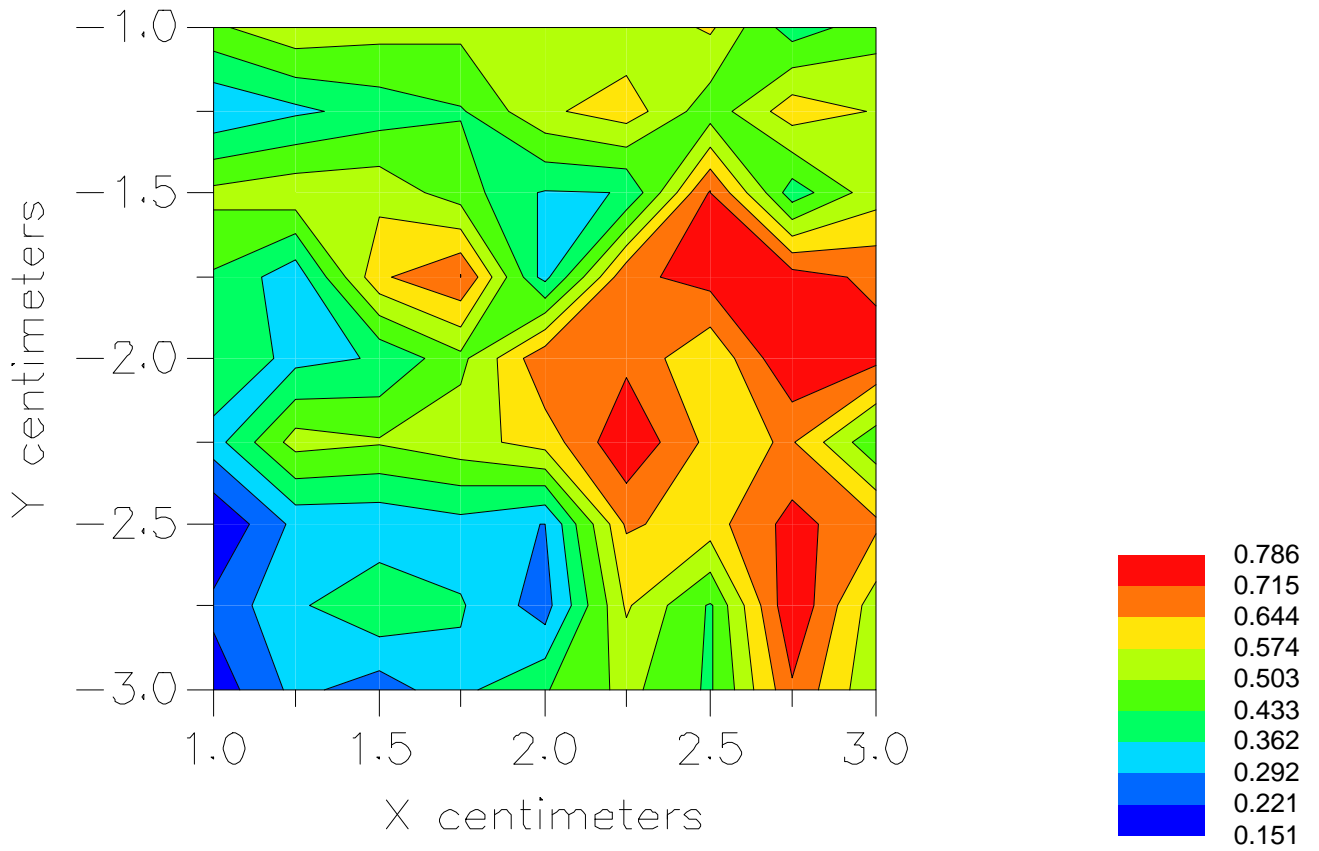


File : 01071105_ZOOM

Start : 11-Jul-101 10:46:33 am End : 11-Jul-101 10:59:47 am

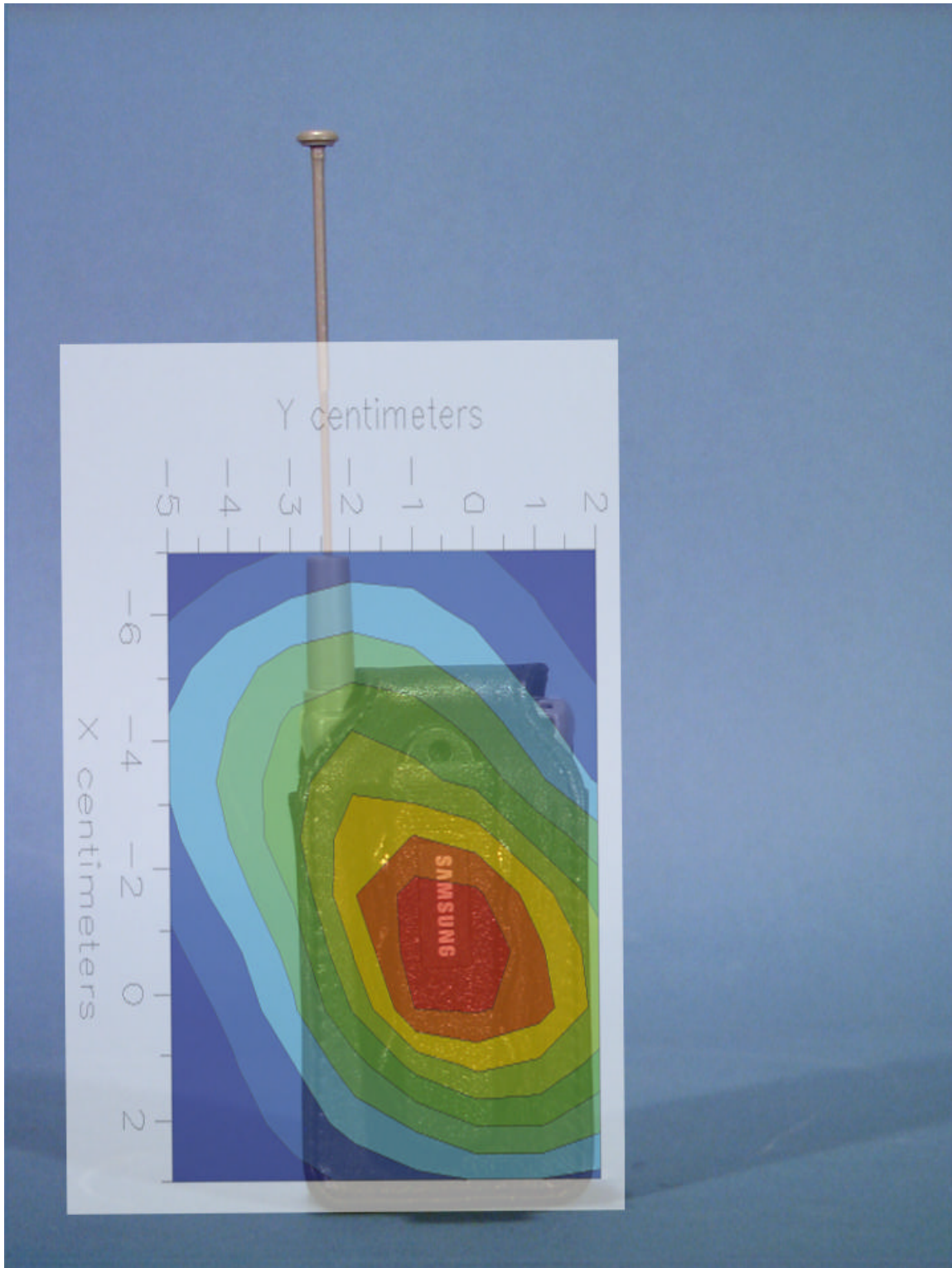
SAMSUNG/STH-A225/2;848.97MHz;W;Helical/Out;

Head/Left Ear;ZOOM/SAR;PCTEST/E Field/0 DegreesBrain/41.500/0.900



Peak SAR Location

Body SAR



File : c:/idx3/SYSTEM/SARMEAS3/data/Normal/01071115_ZOOM.VLT
Start : 11-Jul-101 02:09:12 pm End : 11-Jul-101 02:22:59 pm

Radio Type : SAMSUNG
Model Number : STH-A225
Serial Number : 2
Frequency : 824.04 MHz
Peak Trans. Pwr : 0.420 W
Start Trans. Pwr : 0.420 W
Antenna Type : Helical
Antenna Posn. : In
Phantom Type : Body
Phantom Posn. : Abdomen
Scan Type : ZOOM/SAR
Probe Name : PCTEST
Field Type : E Field
Orientation : 0 Degrees

Mixture Type = Muscle
Mixture Dielectric Constant = 51.700
Mixture Conductivity = 1.100

Comment :
SAMSUNG DUAL-MODE PHONE - AMPS MODE
CH 0991 Conducted 26.2 dBm
SAMSUNG DUAL-MODE PHONE - BODY SAR

Robot : PCTEST

Probe Offset = 0.25 cm
Sensor Factor = 0.0108
Conversion Factor = 0.894

PCTEST Amplifier Channel Settings : 0.166 0.135 0.132

Max Location : X = -0.750, Y = -0.500, Z = 0.000 (cm) Value = 6.278

Measured Values (volts) =
6.134E-003 5.212E-003 4.529E-003 4.077E-003 3.740E-003 3.643E-003
3.535E-003 3.488E-003 3.374E-003 3.161E-003 2.866E-003 2.582E-003
2.322E-003 1.991E-003 1.919E-003 1.909E-003 1.958E-003 2.120E-003
2.215E-003 2.271E-003 2.121E-003

Calc. Voltage @ Surface (Vs) = 0.0071

Voltage @ 1.00 cm (Vt) = 0.0041

Ave. Voltage (Vs+Vt)/2 = 0.0056

Ave. SAR over 1 g (mW/g) = 0.4642

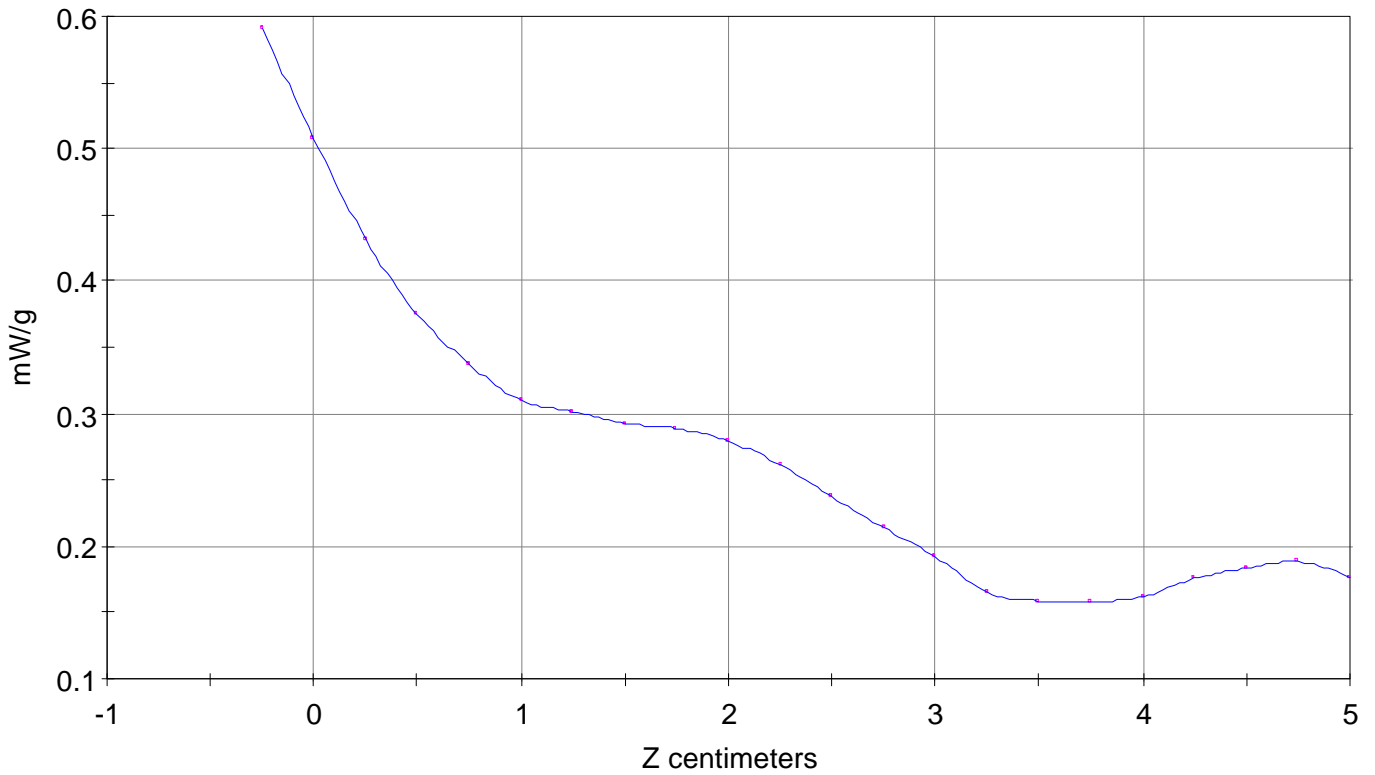
SAR Scan

File : 01071115_ZOOM

Start : 11-Jul-101 02:09:12 pm End : 11-Jul-101 02:22:59 pm

SAMSUNG/STH-A225/2;824.04MHz;W;Helical/In;

Body/Abdomen;ZOOM/SAR;PCTEST/E Field/0 DegreesMuscle/51.700/1.100

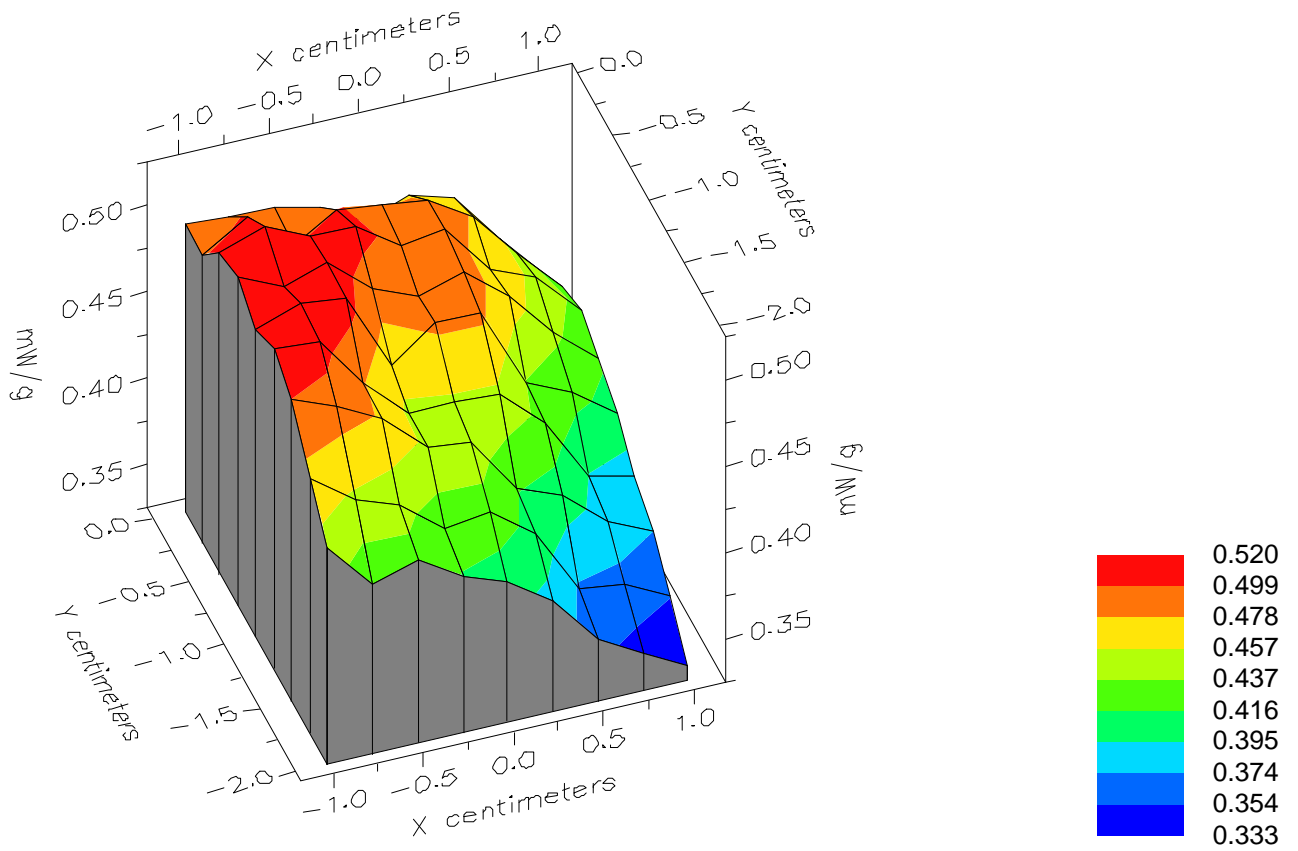


File : 01071115_ZOOM

Start : 11-Jul-101 02:09:12 pm End : 11-Jul-101 02:22:59 pm

SAMSUNG/STH-A225/2;824.04MHz;W;Helical/In;

Body/Abdomen;ZOOM/SAR;PCTEST/E Field/0 DegreesMuscle/51.700/1.100

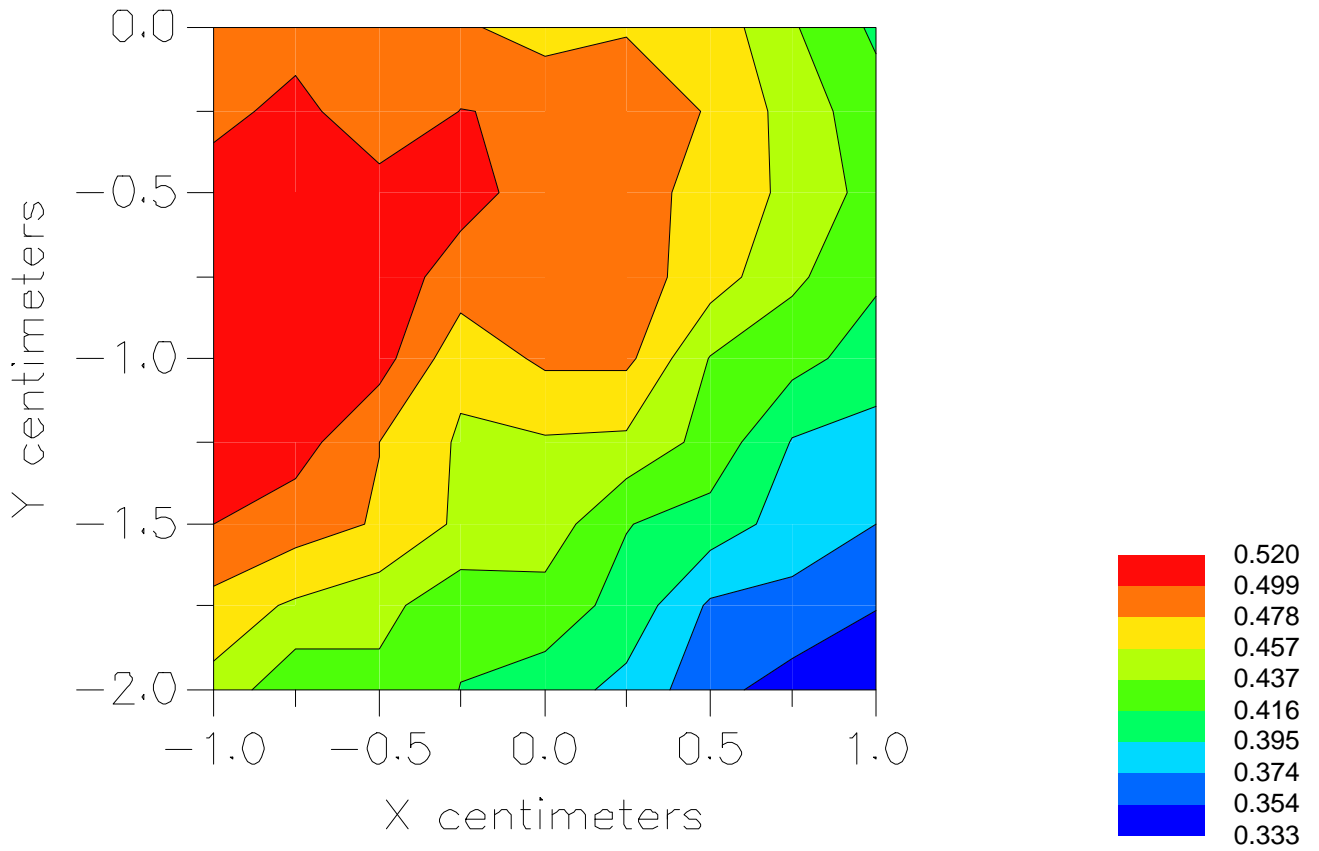


File : 01071115_ZOOM

Start : 11-Jul-101 02:09:12 pm End : 11-Jul-101 02:22:59 pm

SAMSUNG/STH-A225/2;824.04MHz;W;Helical/In;

Body/Abdomen;ZOOM/SAR;PCTEST/E Field/0 DegreesMuscle/51.700/1.100



File : c:/idx3/SYSTEM/SARMEAS3/data/Normal/01071113_ZOOM.VLT
Start : 11-Jul-101 01:35:27 pm End : 11-Jul-101 01:49:33 pm

Radio Type : SAMSUNG
Model Number : STH-A225
Serial Number : 2
Frequency : 824.04 MHz
Peak Trans. Pwr : 0.420 W
Start Trans. Pwr : 0.420 W
Antenna Type : Helical
Antenna Posn. : Out
Phantom Type : Body
Phantom Posn. : Abdomen
Scan Type : ZOOM/SAR
Probe Name : PCTEST
Field Type : E Field
Orientation : 0 Degrees

Mixture Type = Muscle
Mixture Dielectric Constant = 51.700
Mixture Conductivity = 1.100

Comment :
SAMSUNG DUAL-MODE PHONE - AMPS MODE
CH 0991 Conducted 26.2 dBm
SAMSUNG DUAL-MODE PHONE - BODY SAR

Robot : PCTEST

Probe Offset = 0.25 cm
Sensor Factor = 0.0108
Conversion Factor = 0.894

PCTEST Amplifier Channel Settings : 0.166 0.135 0.132

Max Location : X = 0.000, Y = -0.500, Z = 0.000 (cm) Value = 12.598

Measured Values (volts) =
1.235E-002 1.082E-002 8.920E-003 7.757E-003 6.877E-003 6.310E-003
6.093E-003 6.009E-003 5.972E-003 5.807E-003 5.401E-003 4.725E-003
4.042E-003 3.211E-003 2.721E-003 2.302E-003 2.309E-003 2.484E-003
2.853E-003 3.169E-003 3.317E-003

Calc. Voltage @ Surface (Vs) = 0.0145

Voltage @ 1.00 cm (Vt) = 0.0078

Ave. Voltage (Vs+Vt)/2 = 0.0111

Ave. SAR over 1 g (mW/g) = 0.9227

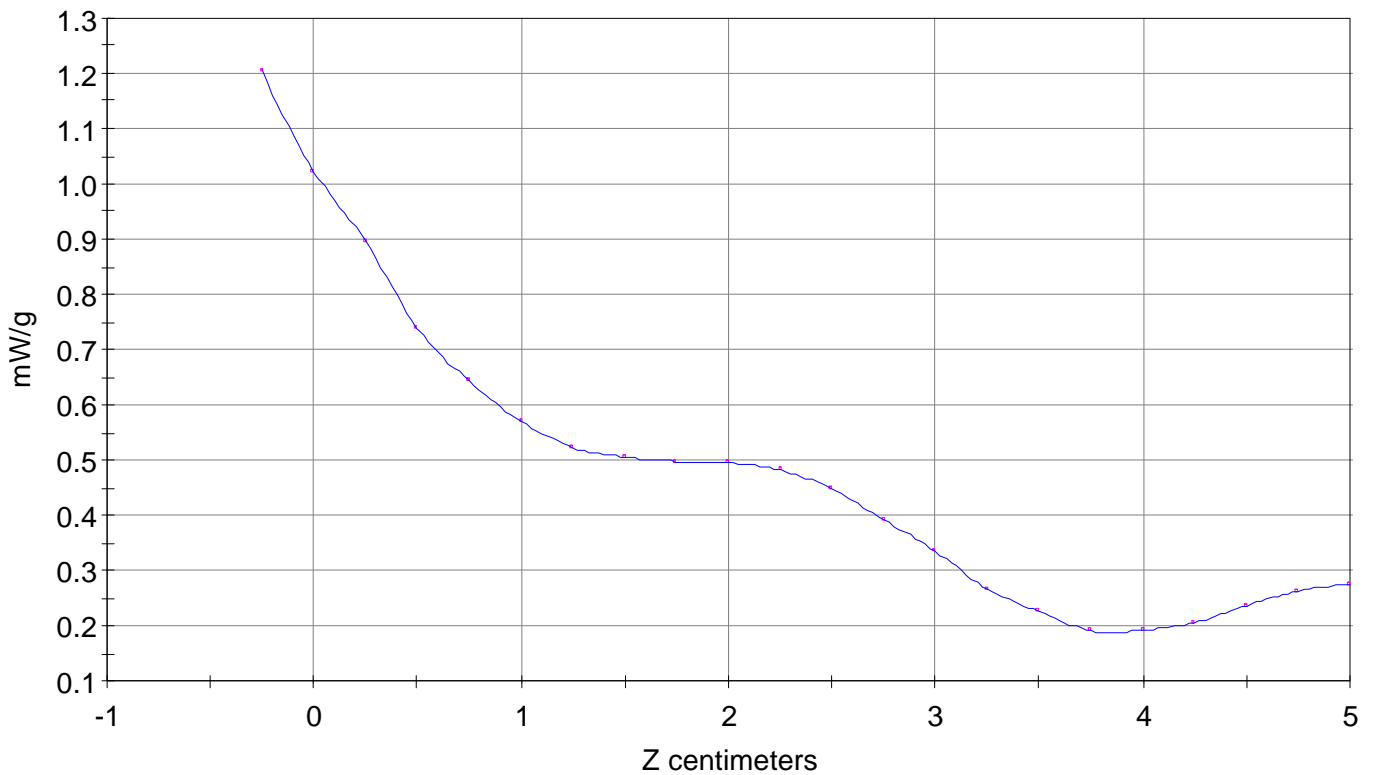
SAR Scan

File : 01071113_ZOOM

Start : 11-Jul-101 01:35:27 pm End : 11-Jul-101 01:49:33 pm

SAMSUNG/STH-A225/2;824.04MHz;W;Helical/Out;

Body/Abdomen;ZOOM/SAR;PCTEST/E Field/0 DegreesMuscle/51.700/1.100

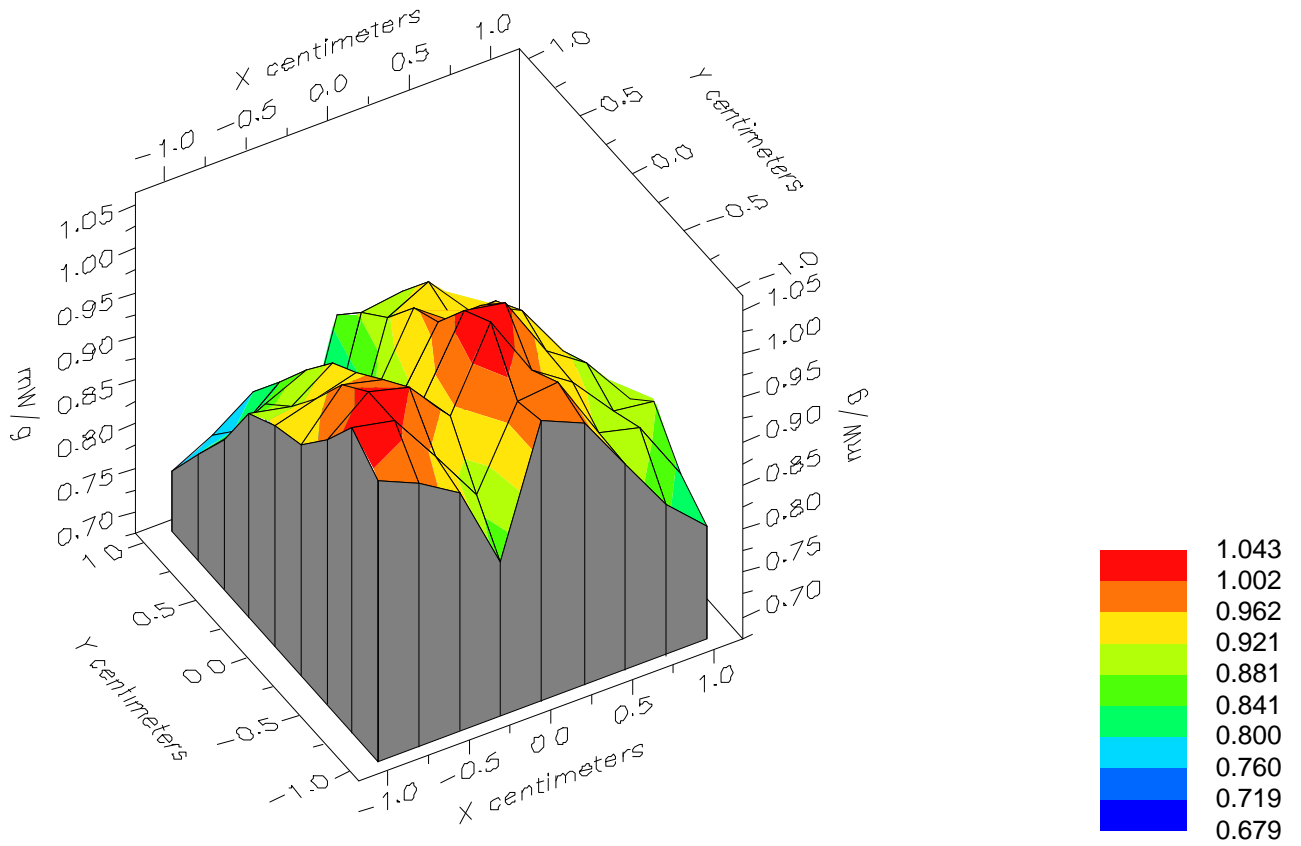


File : 01071113_ZOOM

Start : 11-Jul-101 01:35:27 pm End : 11-Jul-101 01:49:33 pm

SAMSUNG/STH-A225/2;824.04MHz;W;Helical/Out;

Body/Abdomen;ZOOM/SAR;PCTEST/E Field/0 DegreesMuscle/51.700/1.100

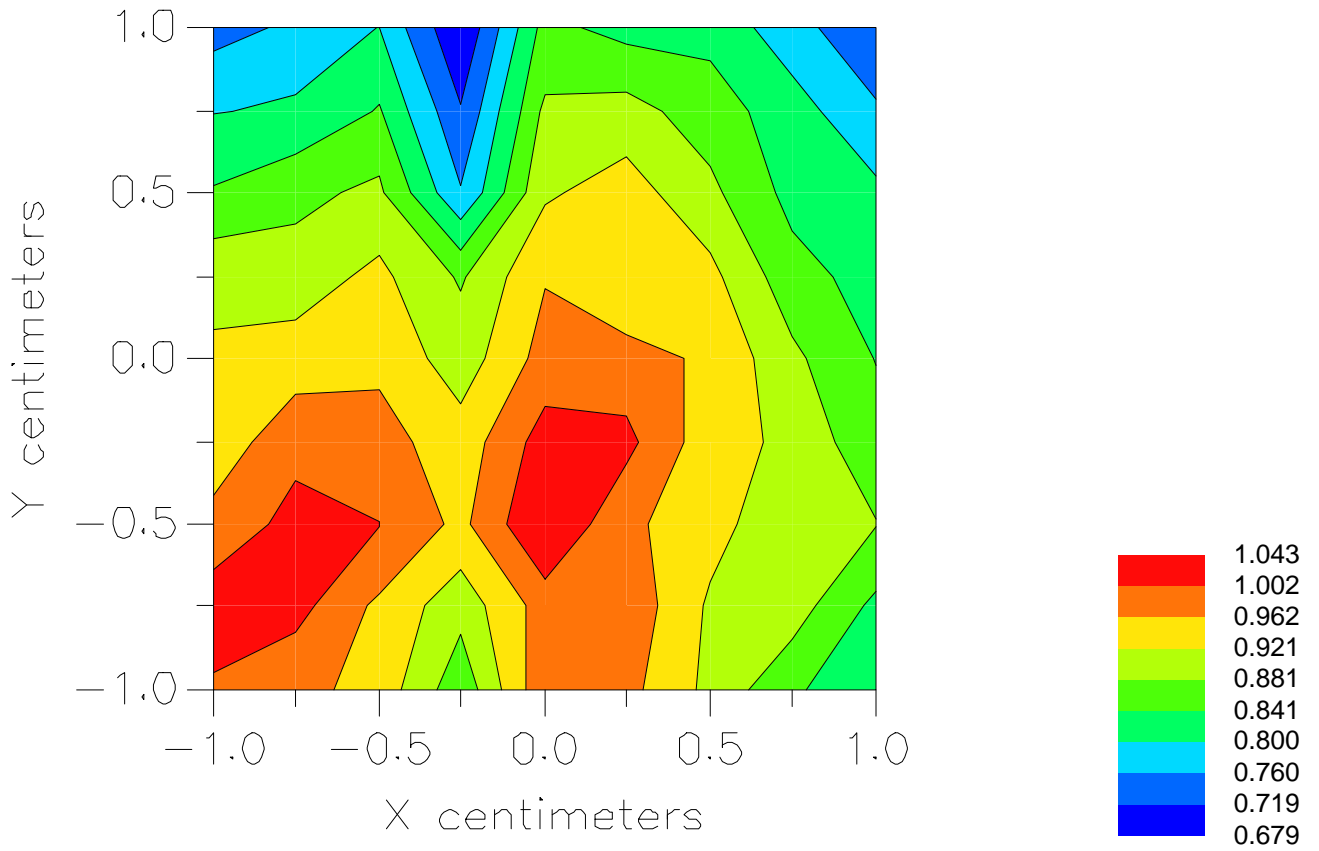


File : 01071113_ZOOM

Start : 11-Jul-101 01:35:27 pm End : 11-Jul-101 01:49:33 pm

SAMSUNG/STH-A225/2;824.04MHz;W;Helical/Out;

Body/Abdomen;ZOOM/SAR;PCTEST/E Field/0 DegreesMuscle/51.700/1.100



File : c:/idx3/SYSTEM/SARMEAS3/data/Normal/01071110_ZOOM.VLT
Start : 11-Jul-101 12:19:38 pm End : 11-Jul-101 12:33:26 pm

Radio Type : SAMSUNG
Model Number : STH-A225
Serial Number : 2
Frequency : 836.49 MHz
Peak Trans. Pwr : 0.420 W
Start Trans. Pwr : 0.420 W
Antenna Type : Helical
Antenna Posn. : In
Phantom Type : Body
Phantom Posn. : Abdomen
Scan Type : ZOOM/SAR
Probe Name : PCTEST
Field Type : E Field
Orientation : 0 Degrees

Mixture Type = Muscle
Mixture Dielectric Constant = 51.700
Mixture Conductivity = 1.100

Comment :
SAMSUNG DUAL-MODE PHONE - AMPS MODE
CH 0383 Conducted 26.2 dBm
SAMSUNG DUAL-MODE PHONE - BODY SAR

Robot : PCTEST

Probe Offset = 0.25 cm
Sensor Factor = 0.0108
Conversion Factor = 0.894

PCTEST Amplifier Channel Settings : 0.166 0.135 0.132

Max Location : X = -0.750, Y = -1.000, Z = 0.000 (cm) Value = 4.845

Measured Values (volts) =
4.832E-003 4.225E-003 3.656E-003 3.311E-003 3.133E-003 3.057E-003
2.949E-003 2.924E-003 2.864E-003 2.727E-003 2.536E-003 2.270E-003
2.117E-003 1.921E-003 1.829E-003 1.831E-003 1.895E-003 2.035E-003
2.082E-003 2.095E-003 1.931E-003

Calc. Voltage @ Surface (Vs) = 0.0056

Voltage @ 1.00 cm (Vt) = 0.0033

Ave. Voltage (Vs+Vt)/2 = 0.0044

Ave. SAR over 1 g (mW/g) = 0.3670

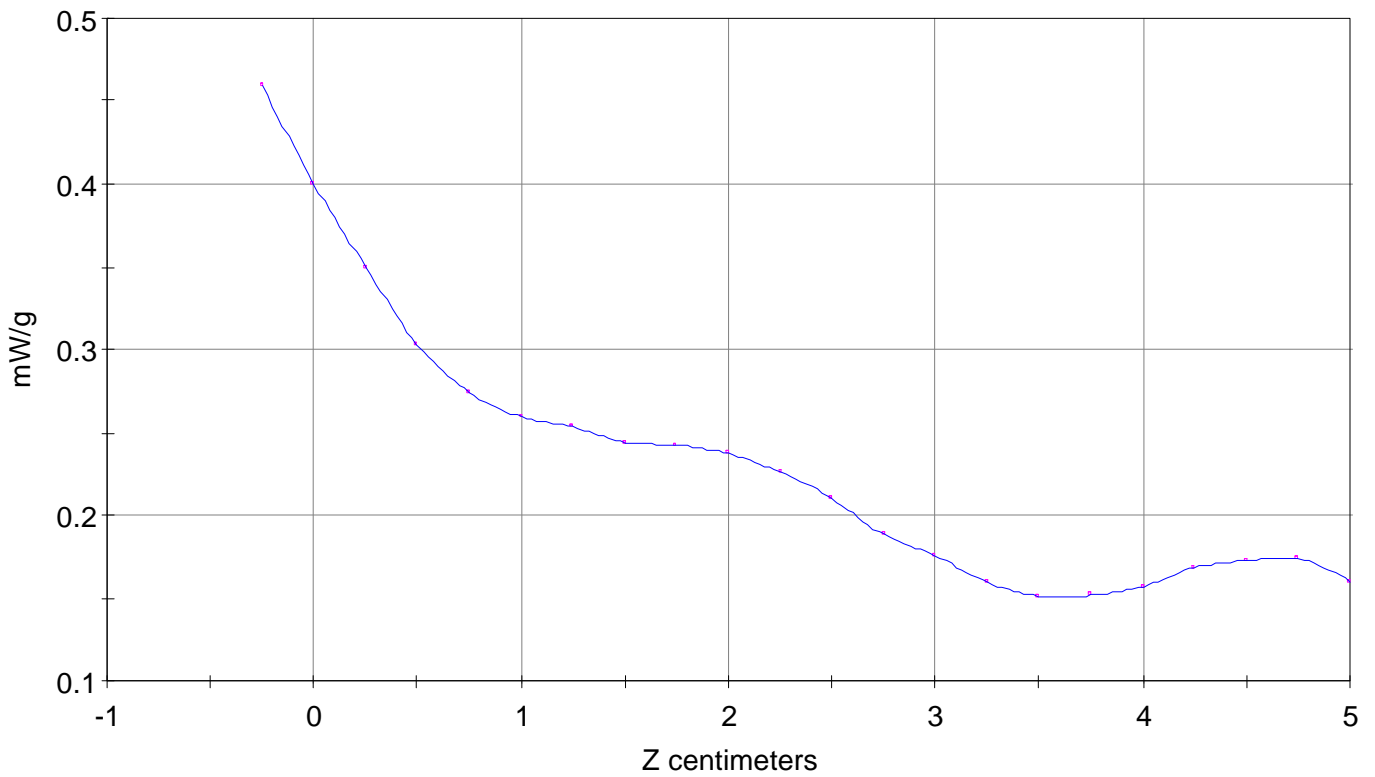
SAR Scan

File : 01071110_ZOOM

Start : 11-Jul-101 12:19:38 pm End : 11-Jul-101 12:33:26 pm

SAMSUNG/STH-A225/2;836.49MHz;W;Helical/In;

Body/Abdomen;ZOOM/SAR;PCTEST/E Field/0 DegreesMuscle/51.700/1.100

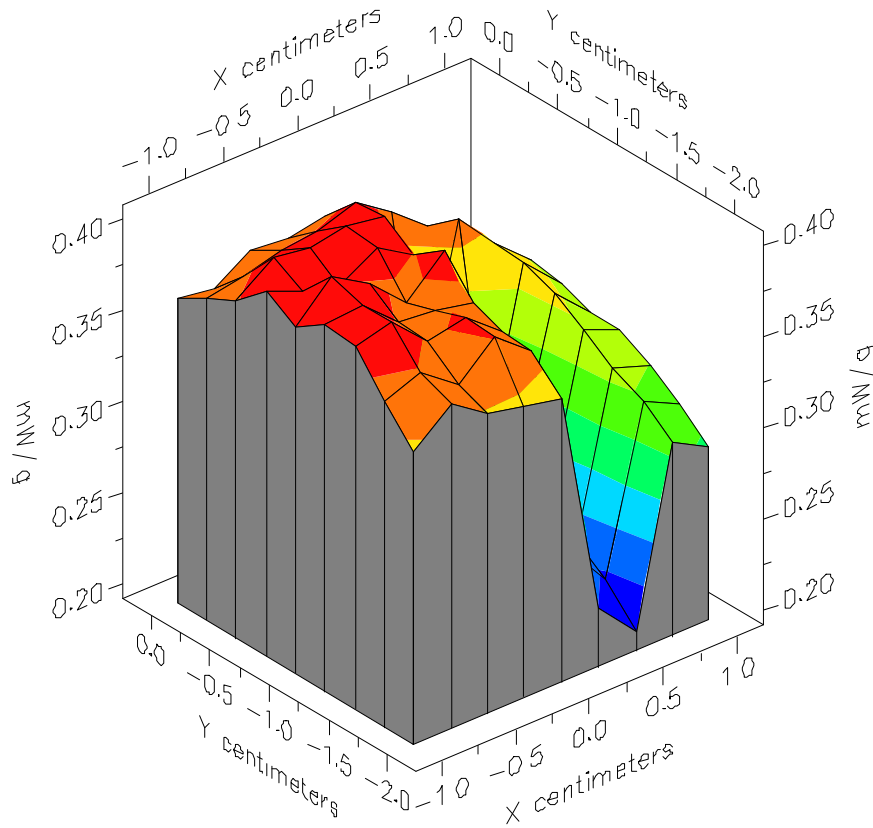


File : 01071110_ZOOM

Start : 11-Jul-101 12:19:38 pm End : 11-Jul-101 12:33:26 pm

SAMSUNG/STH-A225/2;836.49MHz;W;Helical/In;

Body/Abdomen;ZOOM/SAR;PCTEST/E Field/0 DegreesMuscle/51.700/1.100

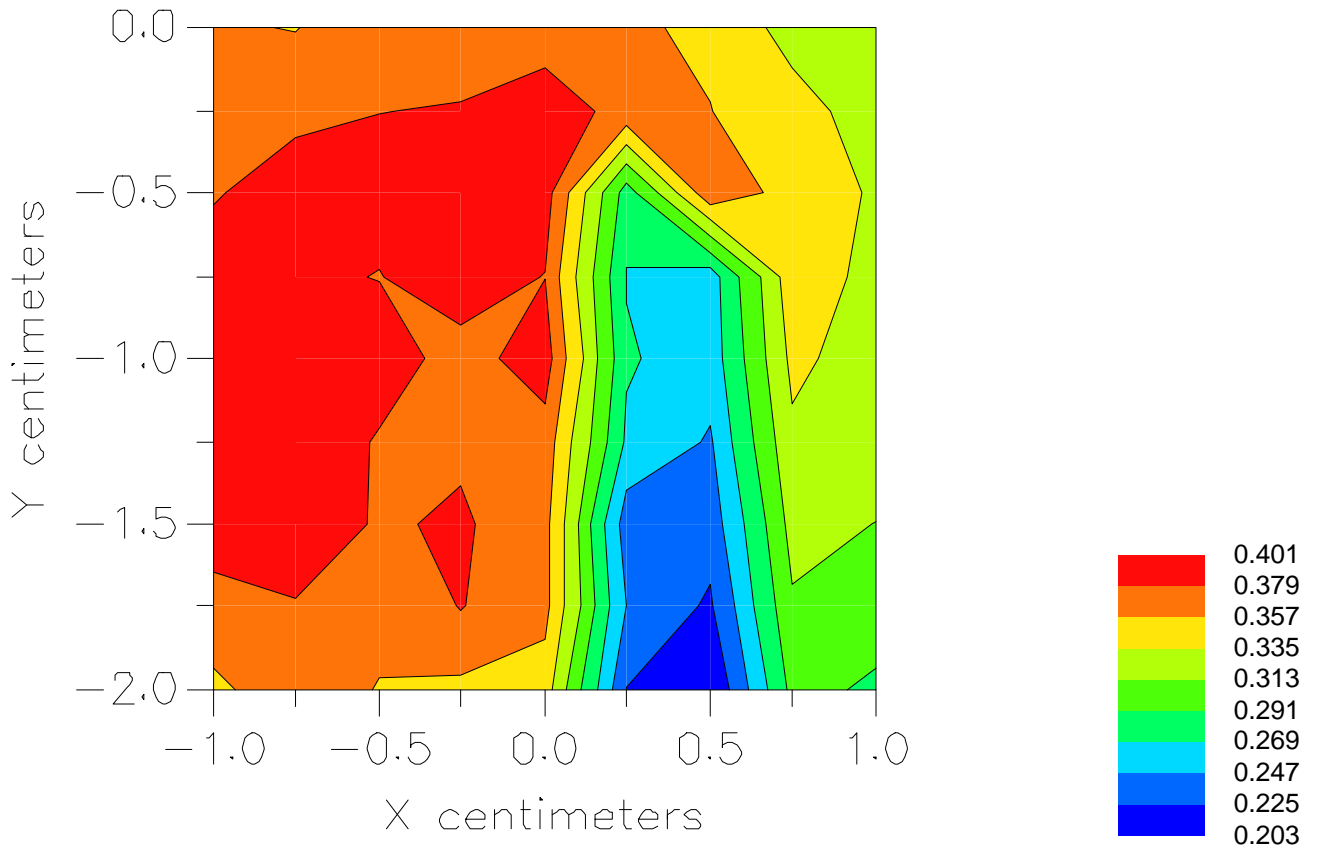


File : 01071110_ZOOM

Start : 11-Jul-101 12:19:38 pm End : 11-Jul-101 12:33:26 pm

SAMSUNG/STH-A225/2;836.49MHz;W;Helical/In;

Body/Abdomen;ZOOM/SAR;PCTEST/E Field/0 DegreesMuscle/51.700/1.100



File : c:/idx3/SYSTEM/SARMEAS3/data/Normal/01071109_ZOOM.VLT
Start : 11-Jul-101 11:55:53 am End : 11-Jul-101 12:09:12 pm

Radio Type : SAMSUNG
Model Number : STH-A225
Serial Number : 2
Frequency : 836.49 MHz
Peak Trans. Pwr : 0.420 W
Start Trans. Pwr : 0.420 W
Antenna Type : Helical
Antenna Posn. : Out
Phantom Type : Body
Phantom Posn. : Abdomen
Scan Type : ZOOM/SAR
Probe Name : PCTEST
Field Type : E Field
Orientation : 0 Degrees

Mixture Type = Muscle
Mixture Dielectric Constant = 51.700
Mixture Conductivity = 1.100

Comment :
SAMSUNG DUAL-MODE PHONE - AMPS MODE
CH 0383 Conducted 26.2 dBm
SAMSUNG DUAL-MODE PHONE - BODY SAR

Robot : PCTEST

Probe Offset = 0.25 cm
Sensor Factor = 0.0108
Conversion Factor = 0.894

PCTEST Amplifier Channel Settings : 0.166 0.135 0.132

Max Location : X = -1.000, Y = -1.000, Z = 0.000 (cm) Value = 8.873

Measured Values (volts) =
8.391E-003 7.148E-003 6.144E-003 5.370E-003 4.978E-003 4.765E-003
4.748E-003 4.582E-003 4.390E-003 4.078E-003 3.572E-003 3.134E-003
2.550E-003 2.186E-003 2.031E-003 2.087E-003 2.253E-003 2.557E-003
2.713E-003 2.705E-003 2.366E-003

Calc. Voltage @ Surface (Vs) = 0.0098

Voltage @ 1.00 cm (Vt) = 0.0054

Ave. Voltage (Vs+Vt)/2 = 0.0076

Ave. SAR over 1 g (mW/g) = 0.6281

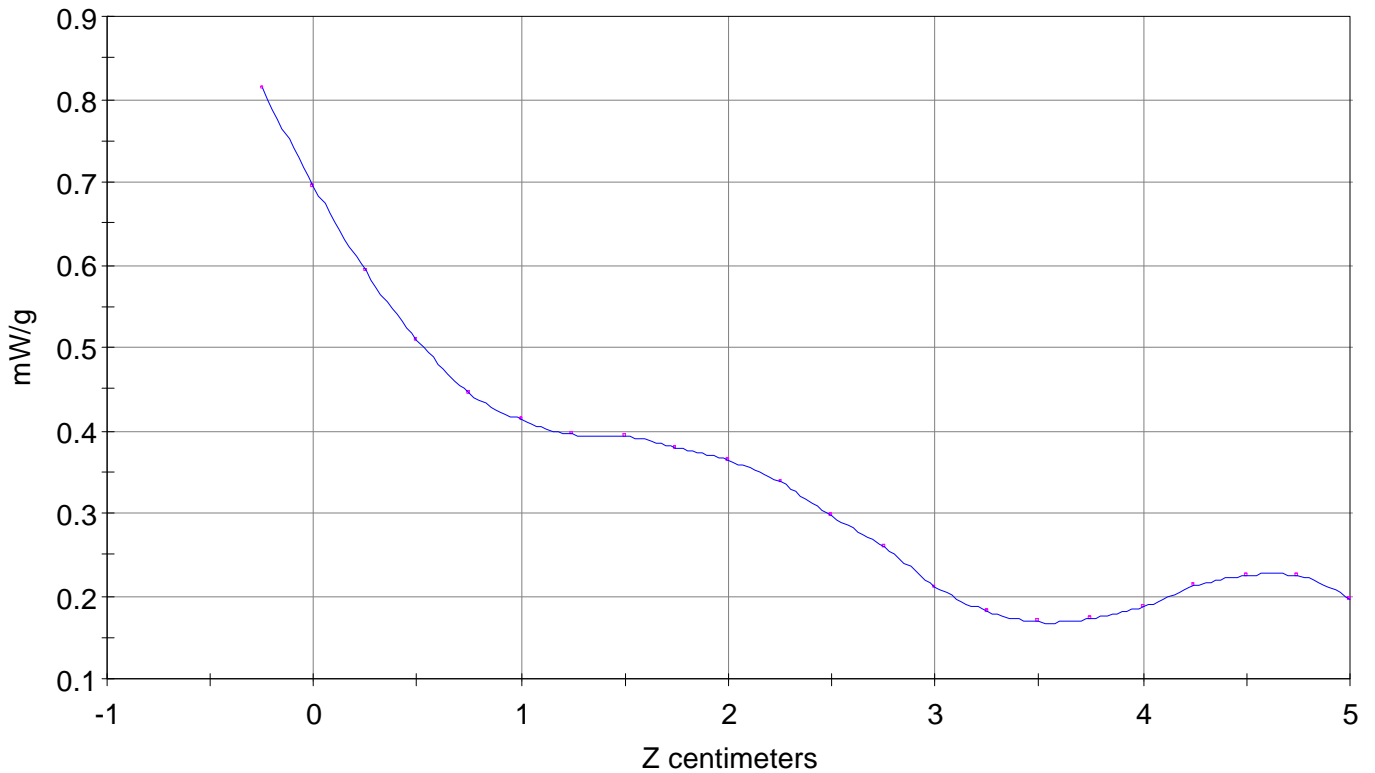
SAR Scan

File : 01071109_ZOOM

Start : 11-Jul-101 11:55:53 am End : 11-Jul-101 12:09:12 pm

SAMSUNG/STH-A225/2;836.49MHz;W;Helical/Out;

Body/Abdomen;ZOOM/SAR;PCTEST/E Field/0 DegreesMuscle/51.700/1.100

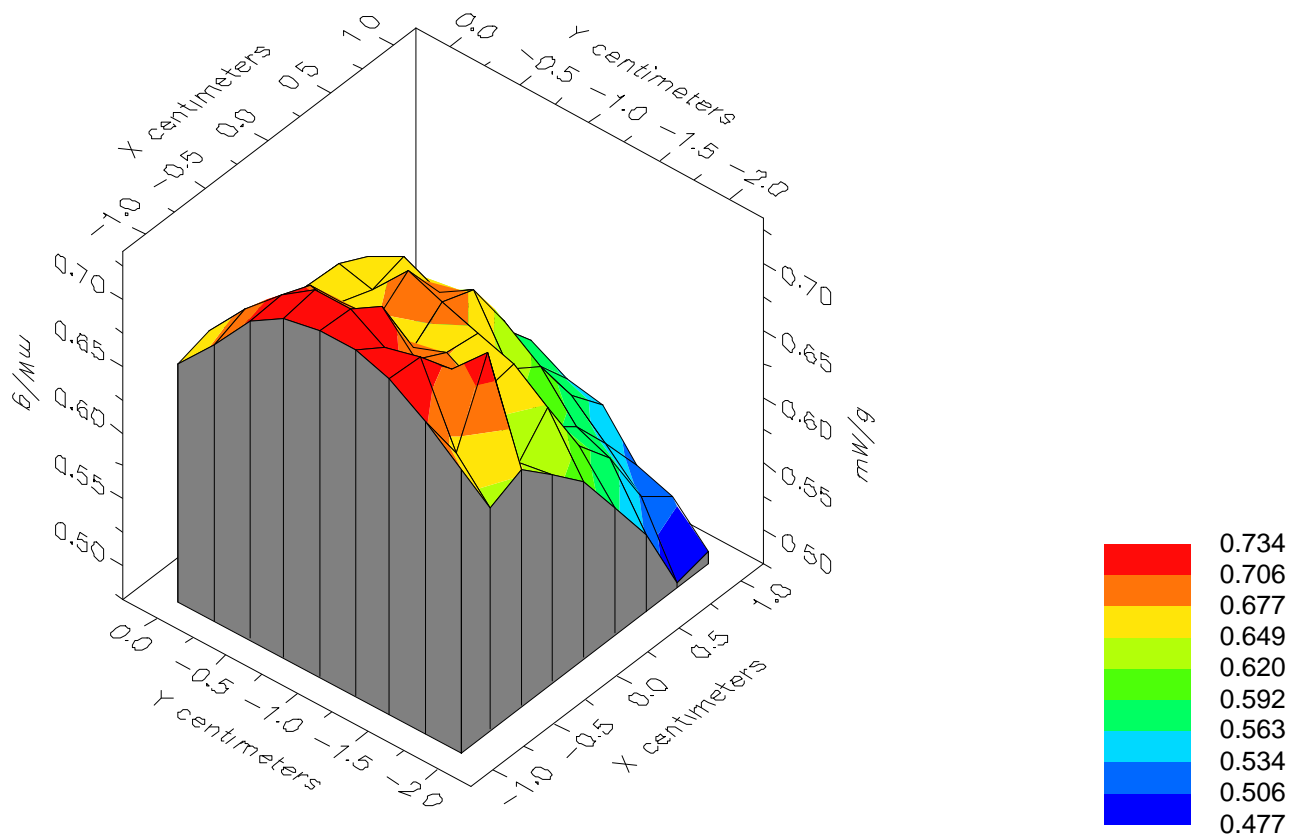


File : 01071109_ZOOM

Start : 11-Jul-101 11:55:53 am End : 11-Jul-101 12:09:12 pm

SAMSUNG/STH-A225/2;836.49MHz;W;Helical/Out;

Body/Abdomen;ZOOM/SAR;PCTEST/E Field/0 DegreesMuscle/51.700/1.100

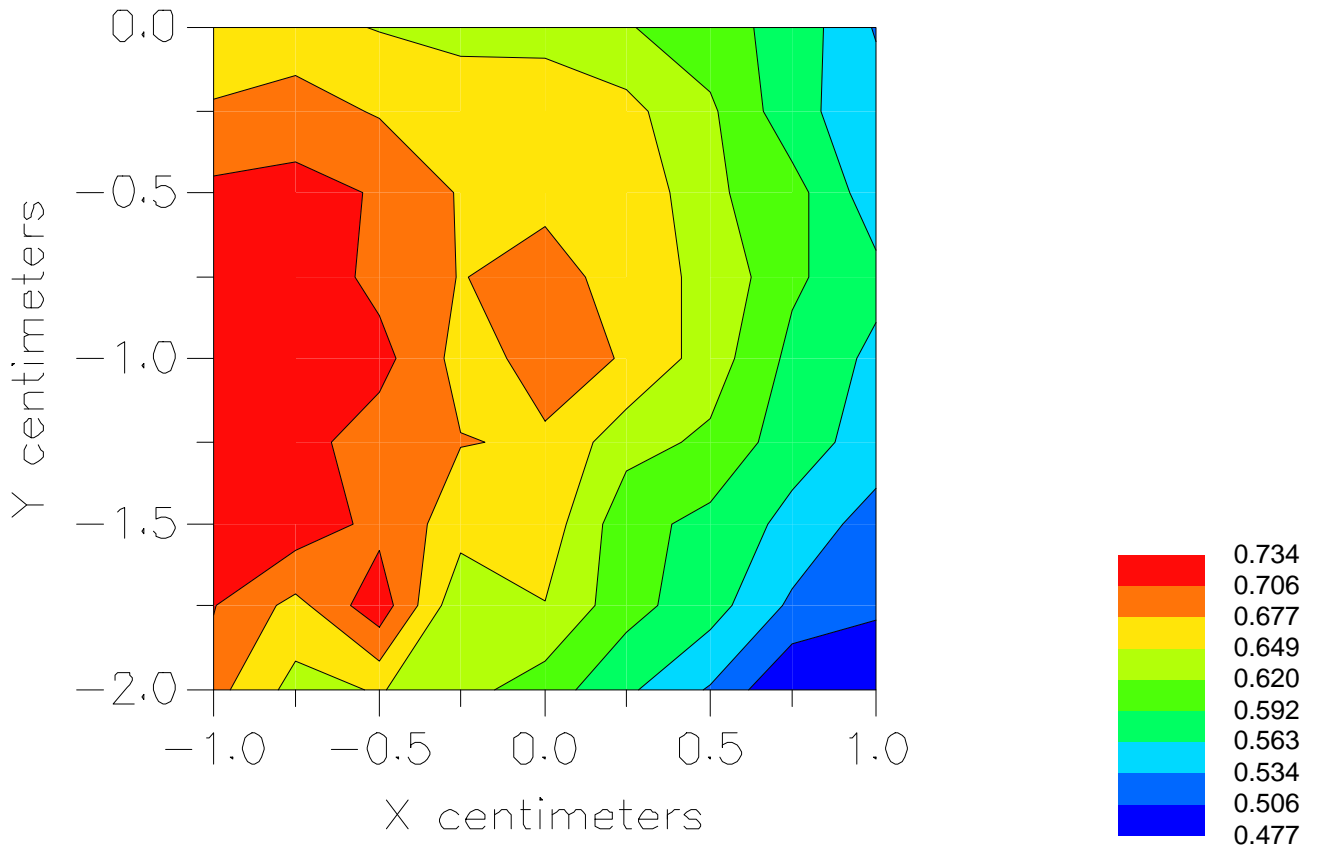


File : 01071109_ZOOM

Start : 11-Jul-101 11:55:53 am End : 11-Jul-101 12:09:12 pm

SAMSUNG/STH-A225/2;836.49MHz;W;Helical/Out;

Body/Abdomen;ZOOM/SAR;PCTEST/E Field/0 DegreesMuscle/51.700/1.100



File : c:/idx3/SYSTEM/SARMEAS3/data/Normal/01071112_ZOOM.VLT
Start : 11-Jul-101 01:14:46 pm End : 11-Jul-101 01:23:00 pm

Radio Type : SAMSUNG
Model Number : STH-A225
Serial Number : 2
Frequency : 848.97 MHz
Peak Trans. Pwr : 0.420 W
Start Trans. Pwr : 0.420 W
Antenna Type : Helical
Antenna Posn. : In
Phantom Type : Body
Phantom Posn. : Abdomen
Scan Type : ZOOM/SAR
Probe Name : PCTEST
Field Type : E Field
Orientation : 0 Degrees

Mixture Type = Muscle
Mixture Dielectric Constant = 51.700
Mixture Conductivity = 1.100

Comment :
SAMSUNG DUAL-MODE PHONE - AMPS MODE
CH 0799 Conducted 26.2 dBm
SAMSUNG DUAL-MODE PHONE - BODY SAR

Robot : PCTEST

Probe Offset = 0.25 cm
Sensor Factor = 0.0108
Conversion Factor = 0.894

PCTEST Amplifier Channel Settings : 0.166 0.135 0.132

Max Location : X = -0.500, Y = -0.750, Z = 0.000 (cm) Value = 6.708

Measured Values (volts) =
5.925E-003 5.213E-003 4.548E-003 4.059E-003 3.699E-003 3.490E-003
3.416E-003 3.354E-003 3.304E-003 3.120E-003 2.917E-003 2.643E-003
2.352E-003 2.098E-003 1.922E-003 1.820E-003 1.930E-003 1.995E-003
2.116E-003 2.196E-003 2.074E-003

Calc. Voltage @ Surface (Vs) = 0.0068

Voltage @ 1.00 cm (Vt) = 0.0041

Ave. Voltage (Vs+Vt)/2 = 0.0054

Ave. SAR over 1 g (mW/g) = 0.4479

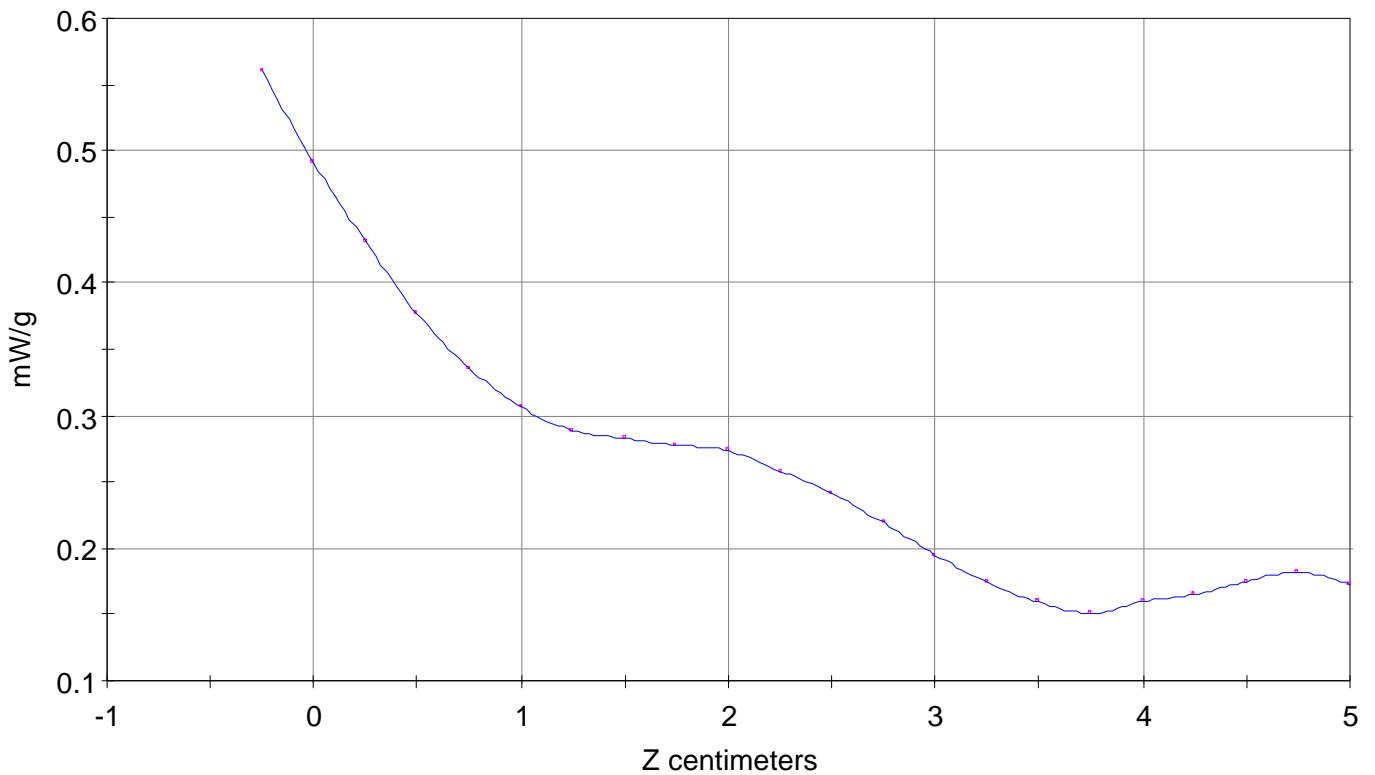
SAR Scan

File : 01071112_ZOOM

Start : 11-Jul-101 01:14:46 pm End : 11-Jul-101 01:23:00 pm

SAMSUNG/STH-A225/2;848.97MHz;W;Helical/In;

Body/Abdomen;ZOOM/SAR;PCTEST/E Field/0 DegreesMuscle/51.700/1.100

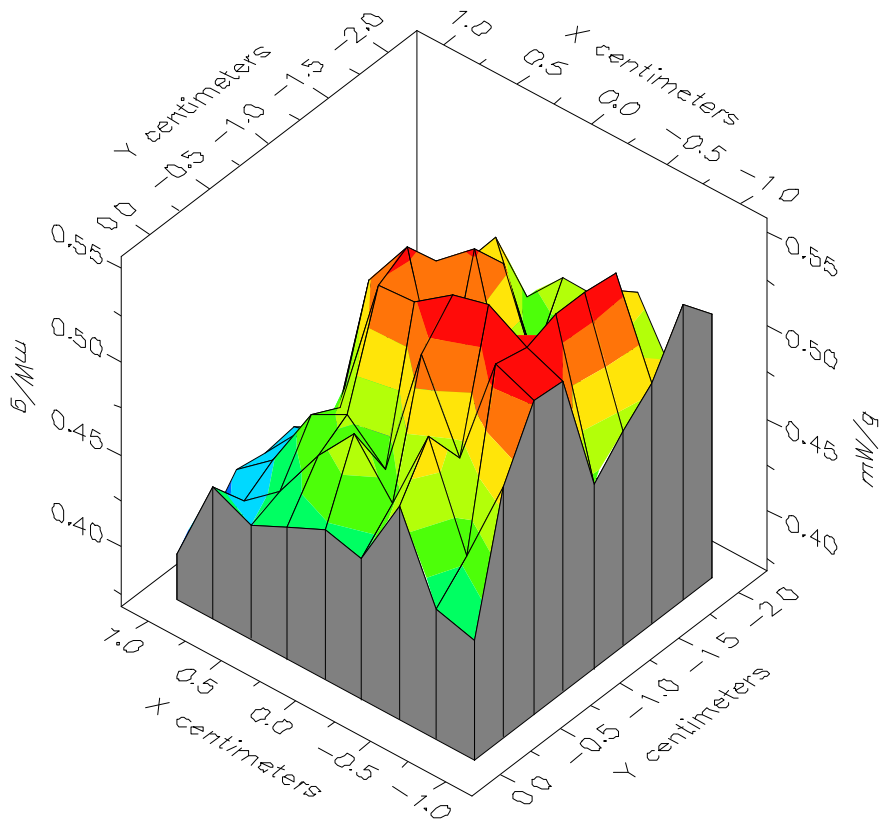


File : 01071112_ZOOM

Start : 11-Jul-101 01:14:46 pm End : 11-Jul-101 01:23:00 pm

SAMSUNG/STH-A225/2;848.97MHz;W;Helical/In;

Body/Abdomen;ZOOM/SAR;PCTEST/E Field/0 DegreesMuscle/51.700/1.100

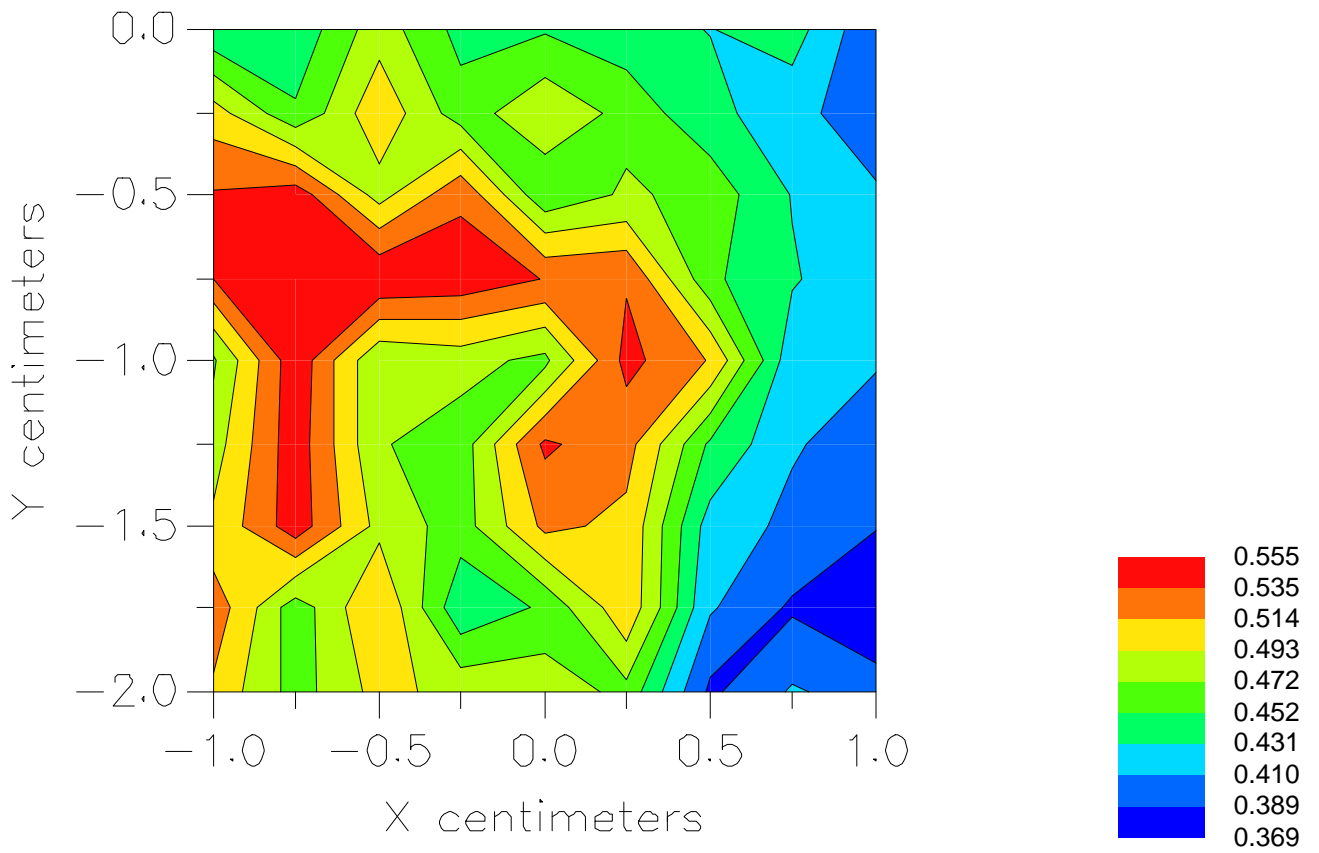


File : 01071112_ZOOM

Start : 11-Jul-101 01:14:46 pm End : 11-Jul-101 01:23:00 pm

SAMSUNG/STH-A225/2;848.97MHz;W;Helical/In;

Body/Abdomen;ZOOM/SAR;PCTEST/E Field/0 DegreesMuscle/51.700/1.100



File : c:/idx3/SYSTEM/SARMEAS3/data/Normal/01071111_ZOOM.VLT
Start : 11-Jul-101 12:51:07 pm End : 11-Jul-101 01:04:50 pm

Radio Type : SAMSUNG
Model Number : STH-A225
Serial Number : 2
Frequency : 848.97 MHz
Peak Trans. Pwr : 0.420 W
Start Trans. Pwr : 0.420 W
Antenna Type : Helical
Antenna Posn. : Out
Phantom Type : Body
Phantom Posn. : Abdomen
Scan Type : ZOOM/SAR
Probe Name : PCTEST
Field Type : E Field
Orientation : 0 Degrees

Mixture Type = Muscle
Mixture Dielectric Constant = 51.700
Mixture Conductivity = 1.100

Comment :
SAMSUNG DUAL-MODE PHONE - AMPS MODE
CH 0799 Conducted 26.2 dBm
SAMSUNG DUAL-MODE PHONE - BODY SAR

Robot : PCTEST

Probe Offset = 0.25 cm
Sensor Factor = 0.0108
Conversion Factor = 0.894

PCTEST Amplifier Channel Settings : 0.166 0.135 0.132

Max Location : X = -0.500, Y = -0.750, Z = 0.000 (cm) Value = 11.284

Measured Values (volts) =
1.103E-002 9.016E-003 7.488E-003 6.624E-003 6.002E-003 5.721E-003
5.644E-003 5.509E-003 5.312E-003 4.959E-003 4.391E-003 3.723E-003
3.030E-003 2.529E-003 2.224E-003 2.140E-003 2.347E-003 2.729E-003
2.975E-003 3.055E-003 2.712E-003

Calc. Voltage @ Surface (Vs) = 0.0134

Voltage @ 1.00 cm (Vt) = 0.0066

Ave. Voltage (Vs+Vt)/2 = 0.0100

Ave. SAR over 1 g (mW/g) = 0.8282

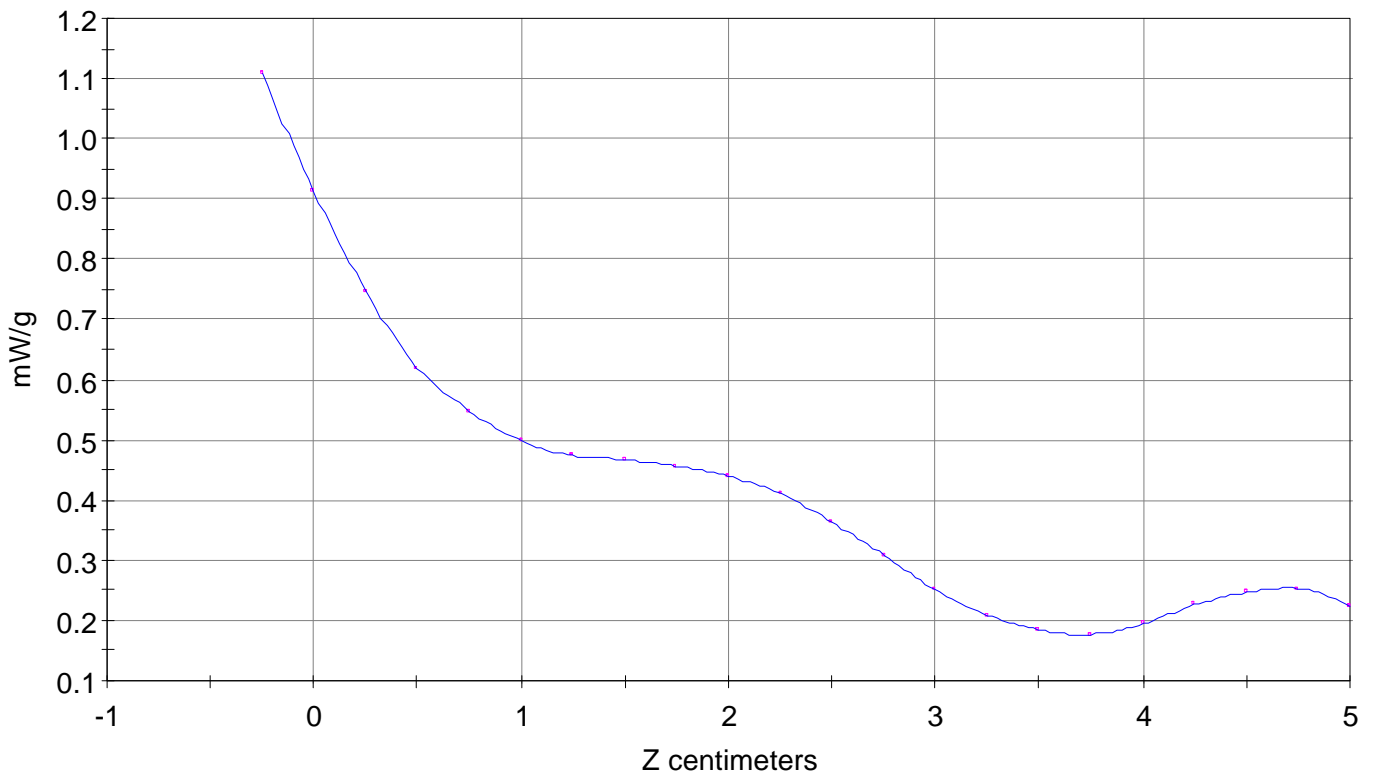
SAR Scan

File : 01071111_ZOOM

Start : 11-Jul-101 12:51:07 pm End : 11-Jul-101 01:04:50 pm

SAMSUNG/STH-A225/2;848.97MHz;W;Helical/Out;

Body/Abdomen;ZOOM/SAR;PCTEST/E Field/0 DegreesMuscle/51.700/1.100

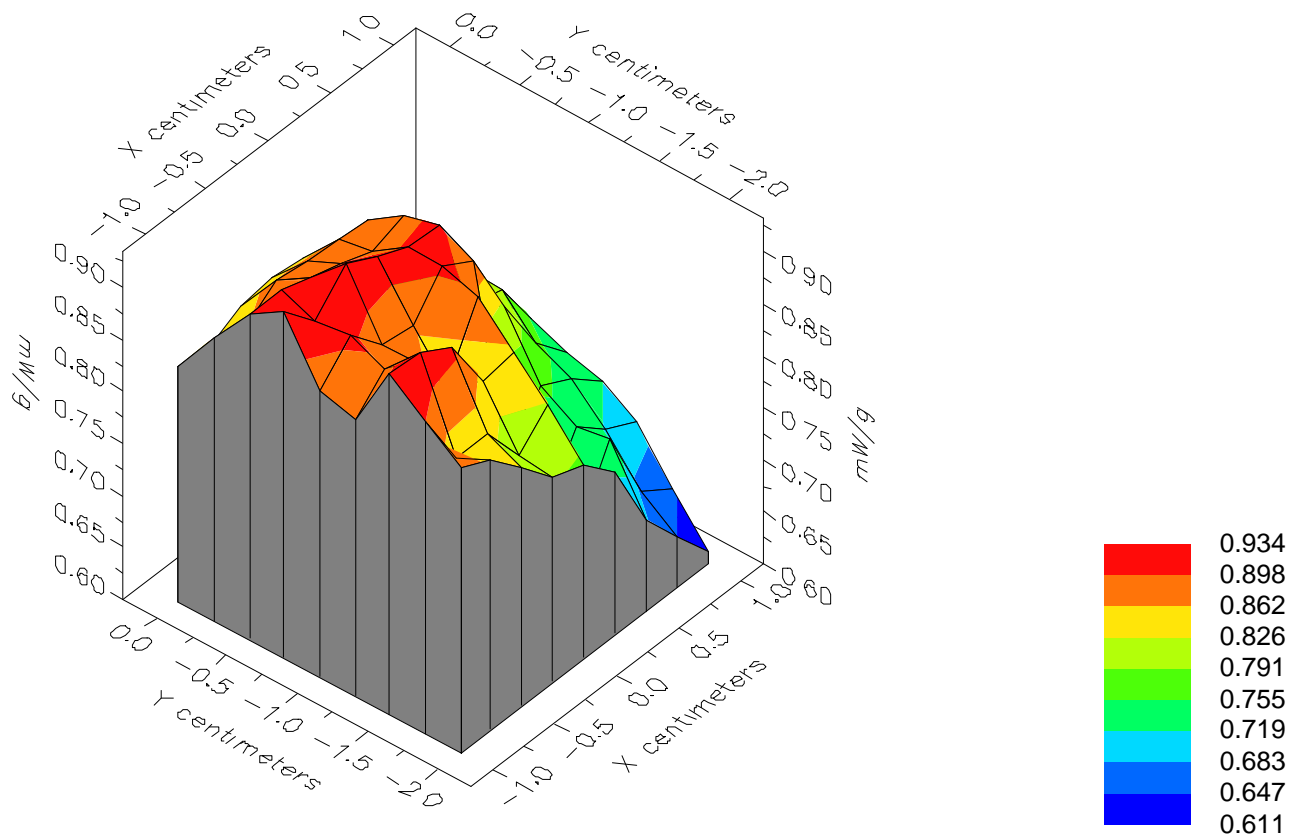


File : 01071111_ZOOM

Start : 11-Jul-101 12:51:07 pm End : 11-Jul-101 01:04:50 pm

SAMSUNG/STH-A225/2;848.97MHz;W;Helical/Out;

Body/Abdomen;ZOOM/SAR;PCTEST/E Field/0 DegreesMuscle/51.700/1.100

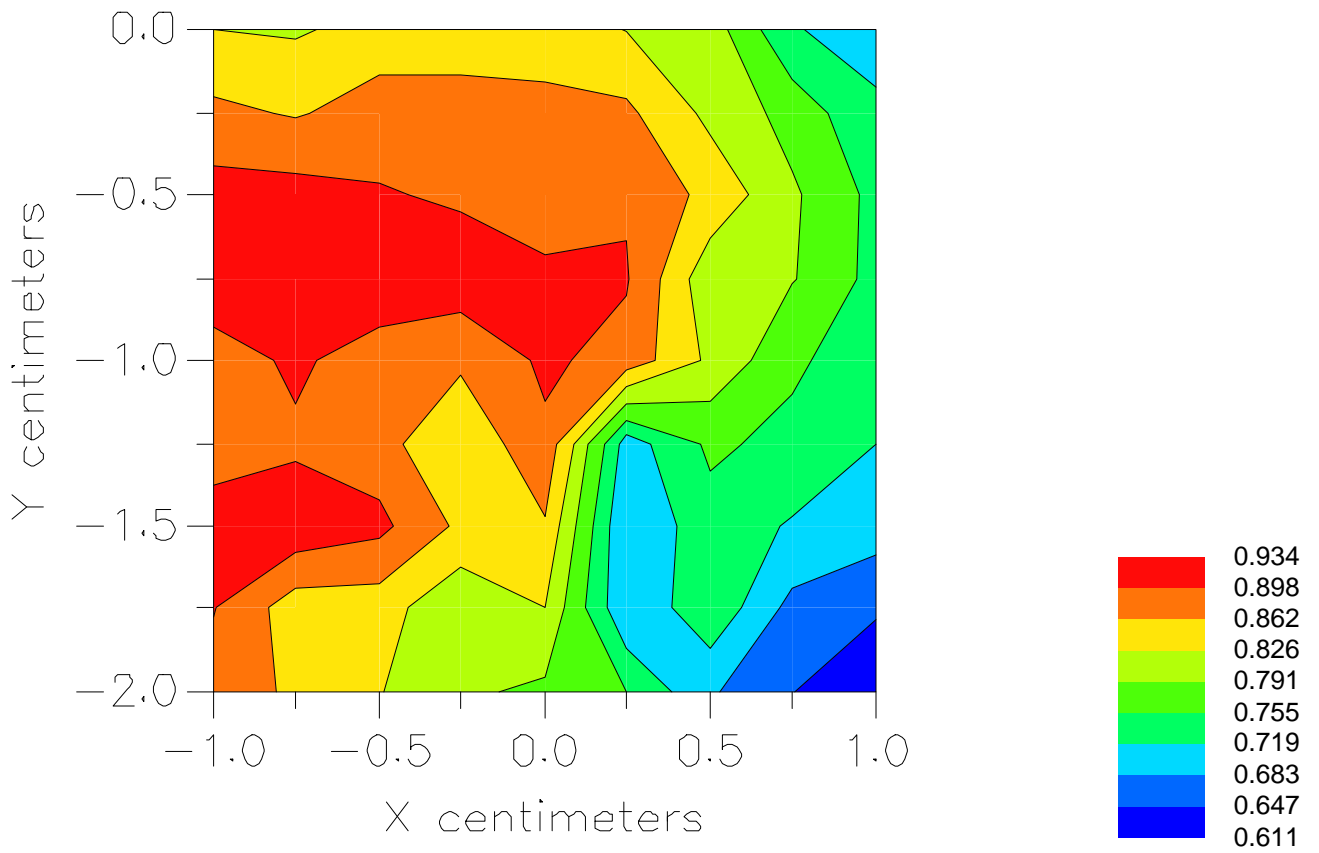


File : 01071111_ZOOM

Start : 11-Jul-101 12:51:07 pm End : 11-Jul-101 01:04:50 pm

SAMSUNG/STH-A225/2;848.97MHz;W;Helical/Out;

Body/Abdomen;ZOOM/SAR;PCTEST/E Field/0 DegreesMuscle/51.700/1.100



File : c:/idx3/SYSTEM/SARMEAS3/data/Normal/01071120_ZOOM.VLT
Start : 11-Jul-101 03:52:03 pm End : 11-Jul-101 04:00:16 pm

Radio Type : SAMSUNG
Model Number : STH-A225
Serial Number : 2
Frequency : 848.97 MHz
Peak Trans. Pwr : 0.400 W
Start Trans. Pwr : 0.400 W
Antenna Type : Helical
Antenna Posn. : In
Phantom Type : Body
Phantom Posn. : Abdomen
Scan Type : ZOOM/SAR
Probe Name : PCTEST
Field Type : E Field
Orientation : 0 Degrees

Mixture Type = Muscle
Mixture Dielectric Constant = 51.700
Mixture Conductivity = 1.100

Comment :
SAMSUNG DUAL-MODE PHONE - TDMA MODE
CH 0799 Conducted 26.0 dBm
SAMSUNG DUAL-MODE PHONE - BODY SAR

Robot : PCTEST

Probe Offset = 0.25 cm
Sensor Factor = 0.0108
Conversion Factor = 0.894

PCTEST Amplifier Channel Settings : 0.166 0.135 0.132

Max Location : X = -0.750, Y = -0.500, Z = 0.000 (cm) Value = 4.591

Measured Values (volts) =
3.239E-003 2.484E-003 2.943E-003 2.725E-003 2.610E-003 2.327E-003
2.046E-003 2.427E-003 2.022E-003 2.299E-003 2.182E-003 2.044E-003
1.897E-003 1.753E-003 1.704E-003 1.701E-003 1.718E-003 1.692E-003
1.817E-003 1.833E-003 1.672E-003

Calc. Voltage @ Surface (Vs) = 0.0035

Voltage @ 1.00 cm (Vt) = 0.0027

Ave. Voltage (Vs+Vt)/2 = 0.0031

Ave. SAR over 1 g (mW/g) = 0.2568

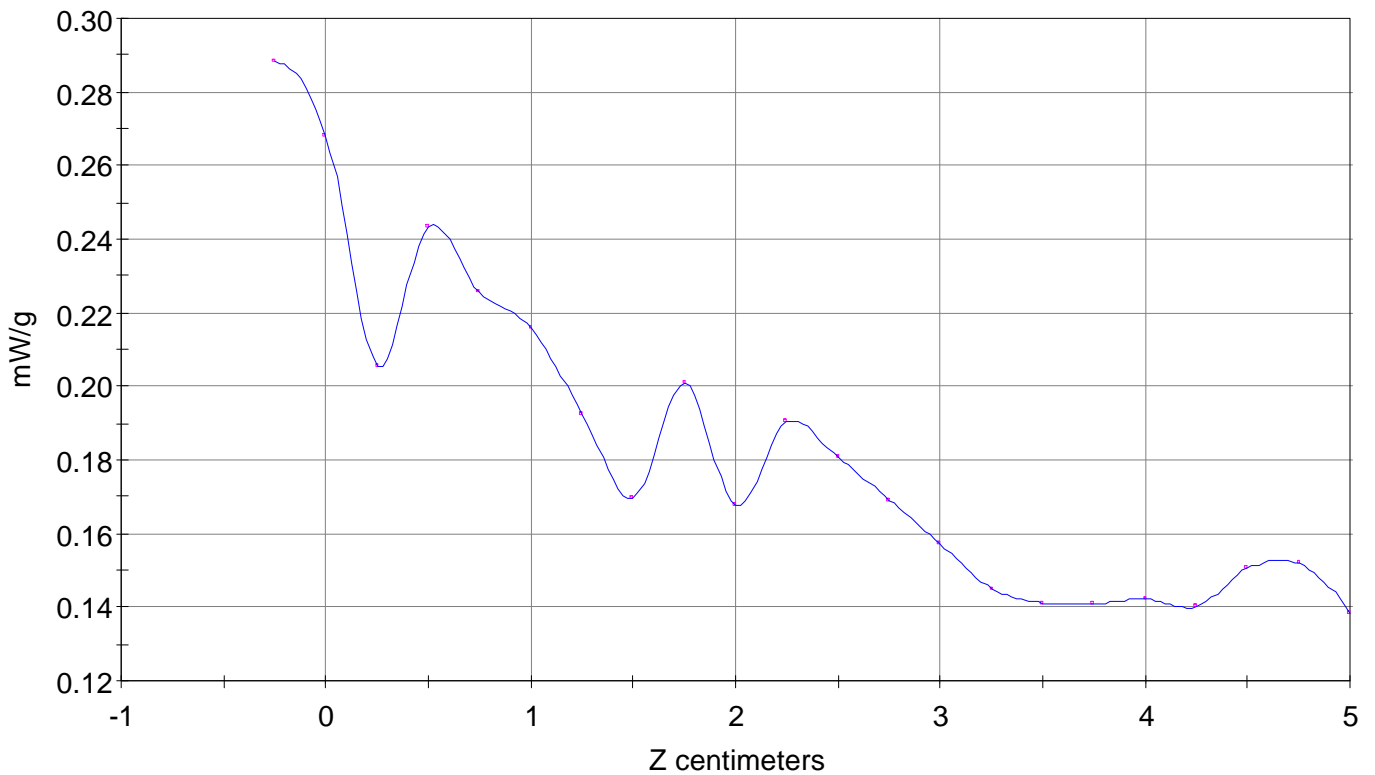
SAR Scan

File : 01071120_ZOOM

Start : 11-Jul-101 03:52:03 pm End : 11-Jul-101 04:00:16 pm

SAMSUNG/STH-A225/2;848.97MHz;W;Helical/In;

Body/Abdomen;ZOOM/SAR;PCTEST/E Field/0 DegreesMuscle/51.700/1.100

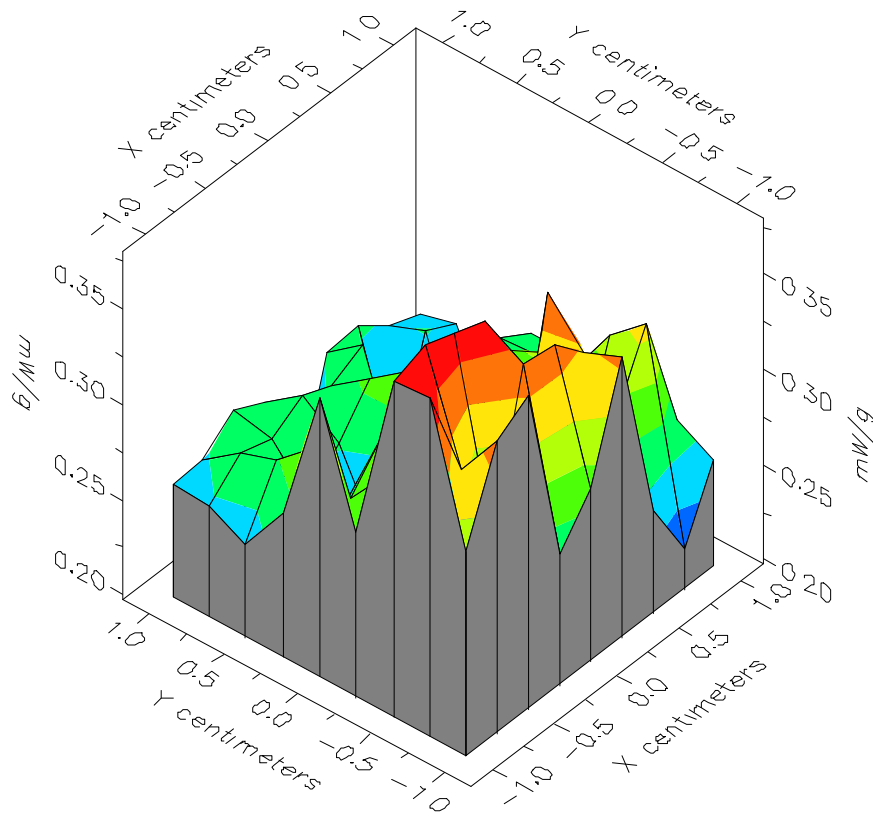


File : 01071120_ZOOM

Start : 11-Jul-101 03:52:03 pm End : 11-Jul-101 04:00:16 pm

SAMSUNG/STH-A225/2;848.97MHz;W;Helical/In;

Body/Abdomen;ZOOM/SAR;PCTEST/E Field/0 DegreesMuscle/51.700/1.100

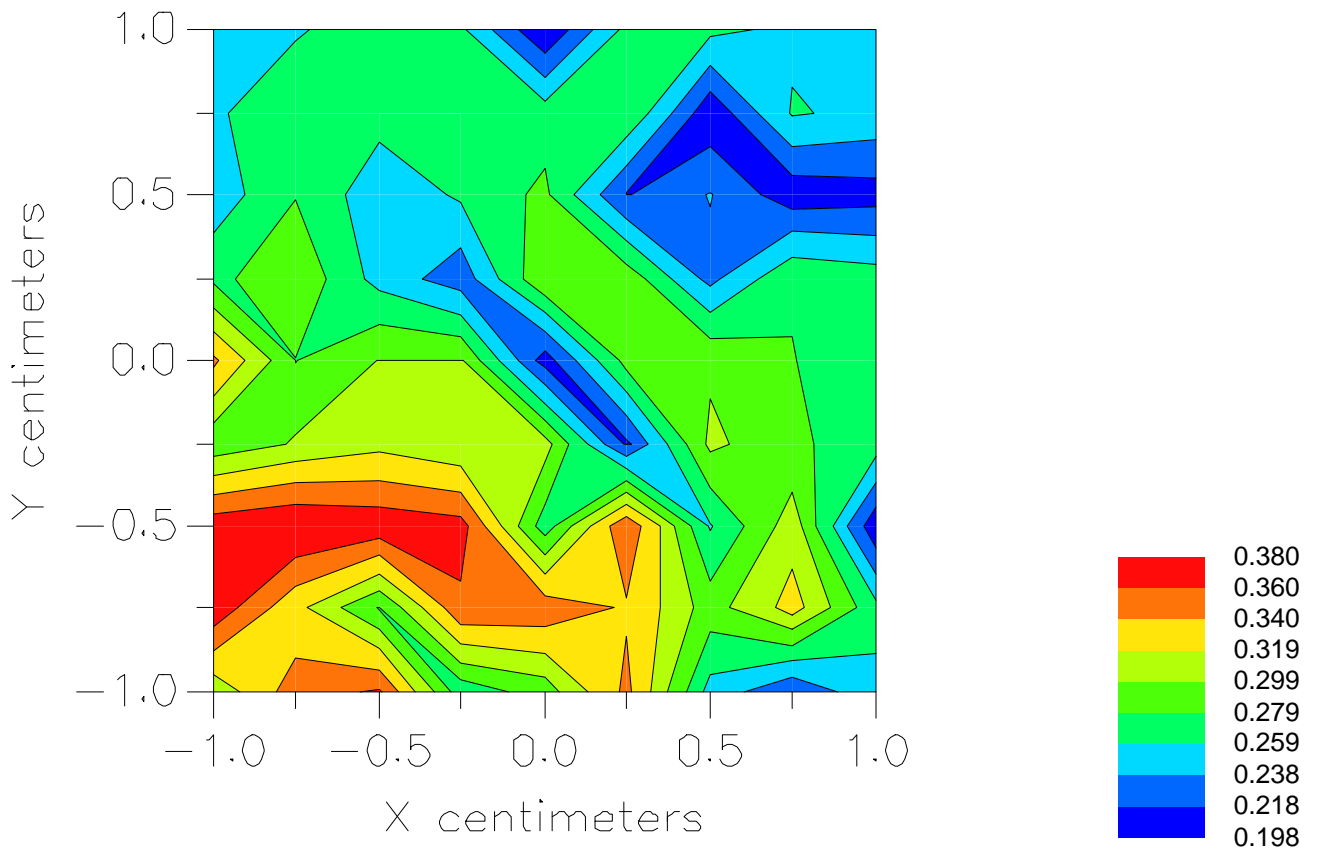


File : 01071120_ZOOM

Start : 11-Jul-101 03:52:03 pm End : 11-Jul-101 04:00:16 pm

SAMSUNG/STH-A225/2;848.97MHz;W;Helical/In;

Body/Abdomen;ZOOM/SAR;PCTEST/E Field/0 DegreesMuscle/51.700/1.100



File : c:/idx3/SYSTEM/SARMEAS3/data/Normal/01071118_ZOOM.VLT
Start : 11-Jul-101 03:22:40 pm End : 11-Jul-101 03:30:53 pm

Radio Type : SAMSUNG
Model Number : STH-A225
Serial Number : 2
Frequency : 848.97 MHz
Peak Trans. Pwr : 0.400 W
Start Trans. Pwr : 0.400 W
Antenna Type : Helical
Antenna Posn. : Out
Phantom Type : Body
Phantom Posn. : Abdomen
Scan Type : ZOOM/SAR
Probe Name : PCTEST
Field Type : E Field
Orientation : 0 Degrees

Mixture Type = Muscle
Mixture Dielectric Constant = 51.700
Mixture Conductivity = 1.100

Comment :
SAMSUNG DUAL-MODE PHONE - TDMA MODE
CH 0799 Conducted 26.0 dBm
SAMSUNG DUAL-MODE PHONE - BODY SAR

Robot : PCTEST

Probe Offset = 0.25 cm
Sensor Factor = 0.0108
Conversion Factor = 0.894

PCTEST Amplifier Channel Settings : 0.166 0.135 0.132

Max Location : X = -0.500, Y = -0.500, Z = 0.000 (cm) Value = 7.441

Measured Values (volts) =
6.620E-003 5.501E-003 3.306E-003 4.280E-003 3.892E-003 3.731E-003
3.603E-003 3.568E-003 3.525E-003 3.341E-003 2.482E-003 2.794E-003
2.374E-003 2.120E-003 1.967E-003 1.762E-003 1.966E-003 2.120E-003
2.273E-003 2.091E-003 1.953E-003

Calc. Voltage @ Surface (Vs) = 0.0095

Voltage @ 1.00 cm (Vt) = 0.0043

Ave. Voltage (Vs+Vt)/2 = 0.0069

Ave. SAR over 1 g (mW/g) = 0.5700

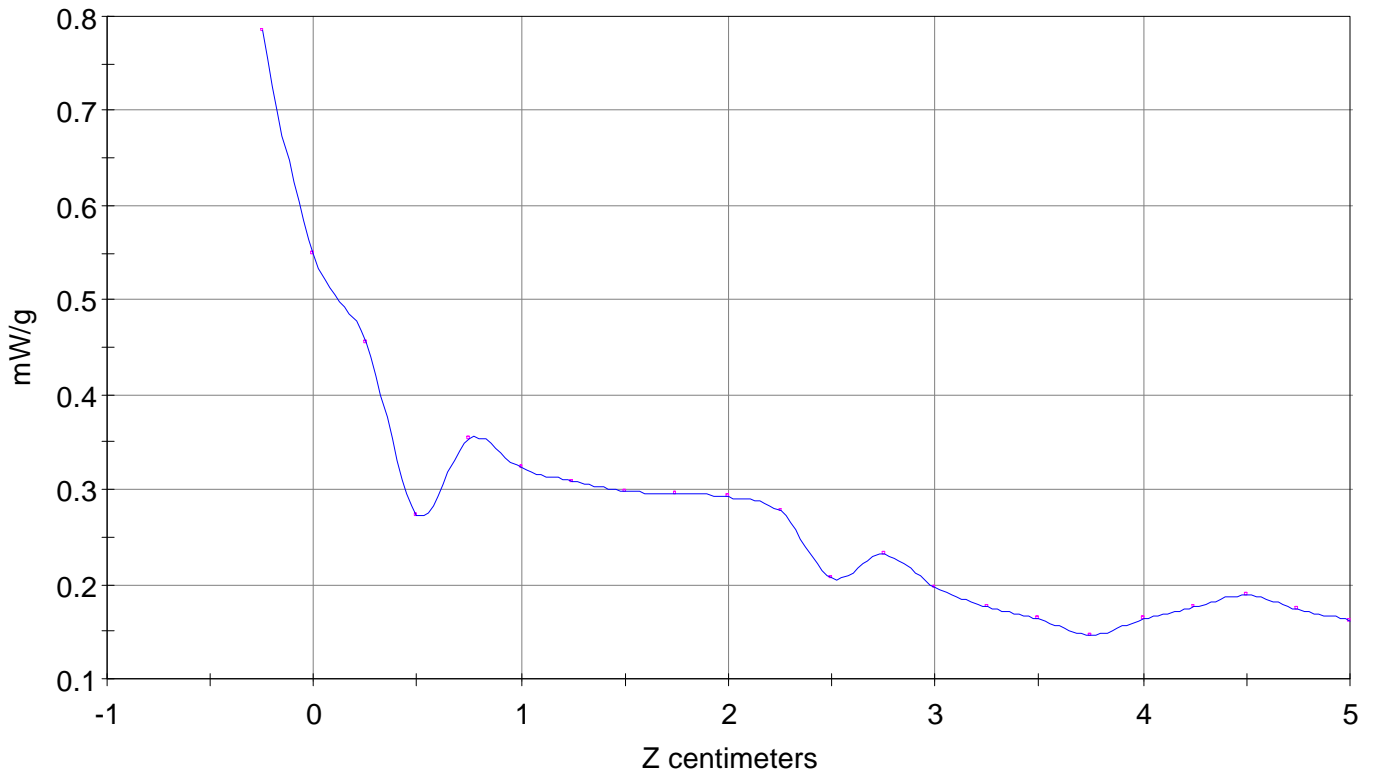
SAR Scan

File : 01071118_ZOOM

Start : 11-Jul-101 03:22:40 pm End : 11-Jul-101 03:30:53 pm

SAMSUNG/STH-A225/2;848.97MHz;W;Helical/Out;

Body/Abdomen;ZOOM/SAR;PCTEST/E Field/0 DegreesMuscle/51.700/1.100

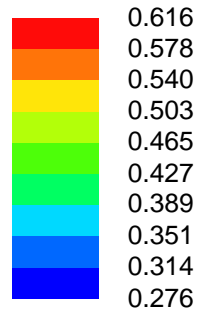
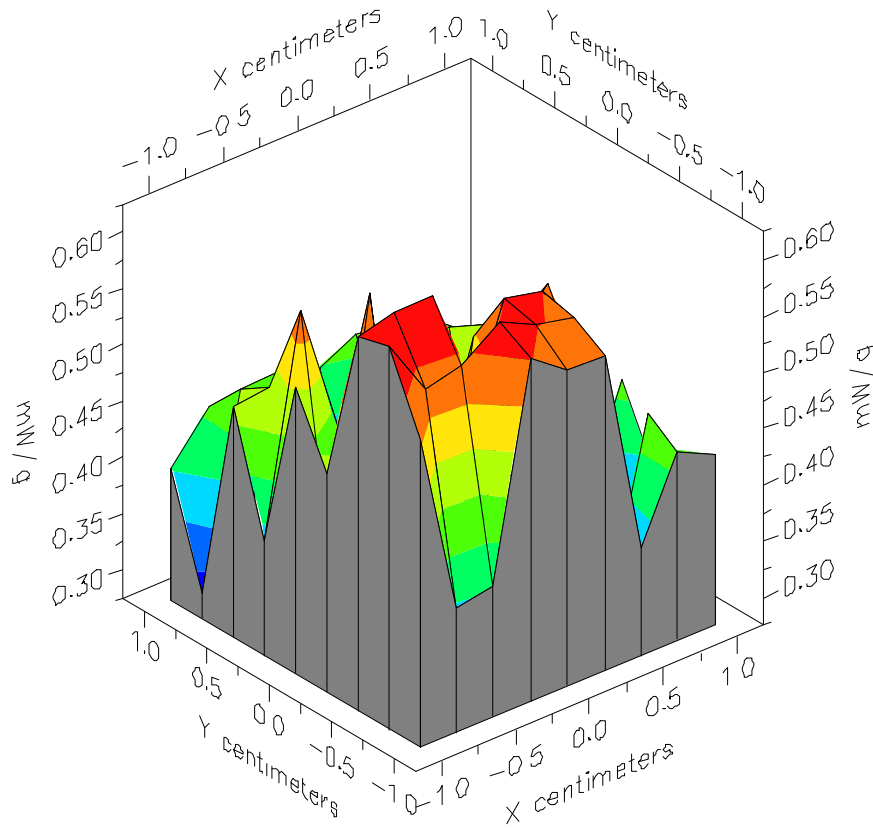


File : 01071118_ZOOM

Start : 11-Jul-101 03:22:40 pm End : 11-Jul-101 03:30:53 pm

SAMSUNG/STH-A225/2;848.97MHz;W;Helical/Out;

Body/Abdomen;ZOOM/SAR;PCTEST/E Field/0 DegreesMuscle/51.700/1.100

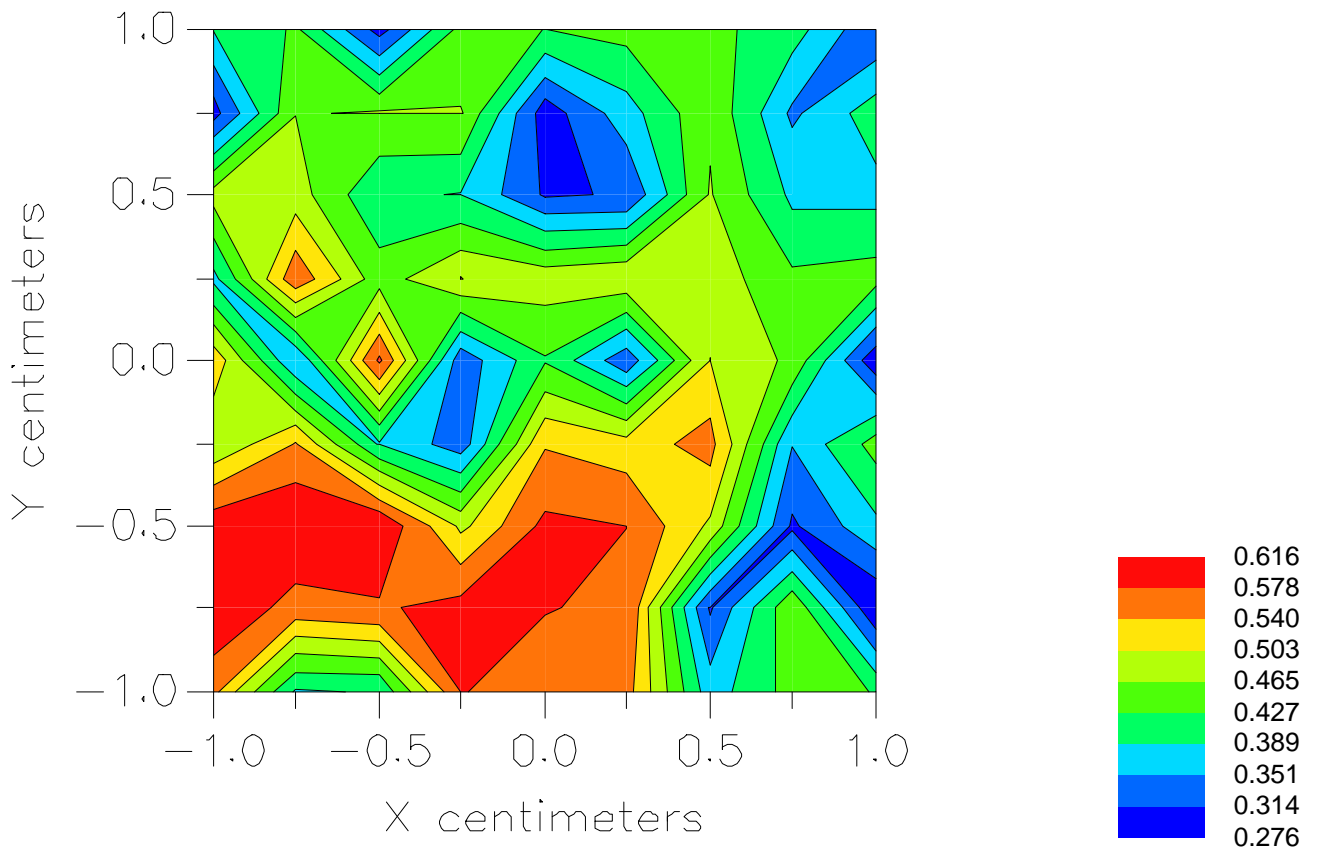


File : 01071118_ZOOM

Start : 11-Jul-101 03:22:40 pm End : 11-Jul-101 03:30:53 pm

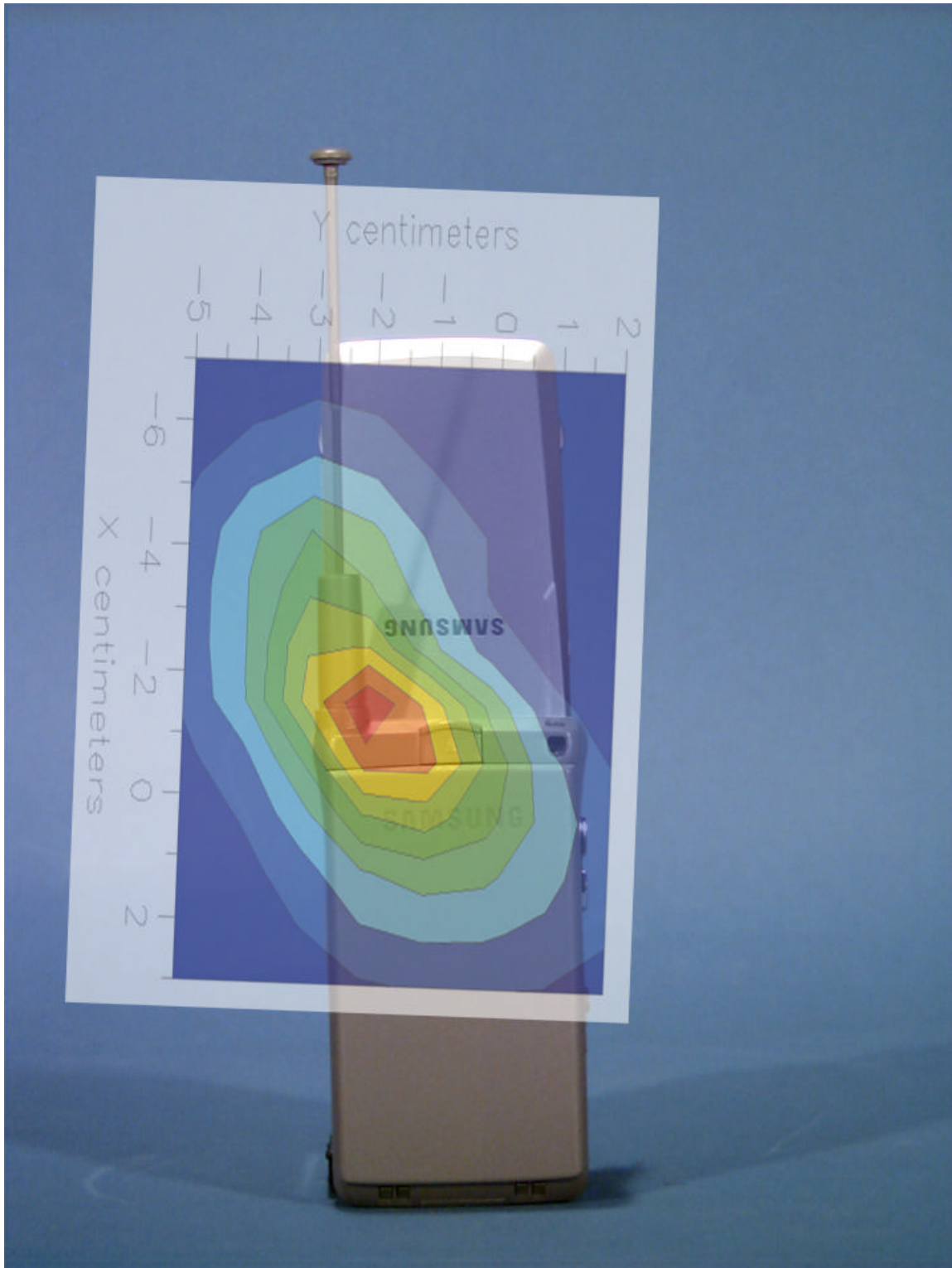
SAMSUNG/STH-A225/2;848.97MHz;W;Helical/Out;

Body/Abdomen;ZOOM/SAR;PCTEST/E Field/0 DegreesMuscle/51.700/1.100



Peak SAR Location

Hand SAR



File : c:/idx3/SYSTEM/SARMEAS3/data/Normal/01071203_SAR.VLT
Start : 12-Jul-101 11:24:52 am End : 12-Jul-101 11:31:32 am

Radio Type : SAMSUNG
Model Number : STH-A225
Serial Number : 2
Frequency : 824.04 MHz
Peak Trans. Pwr : 0.420 W
Start Trans. Pwr : 0.420 W
Antenna Type : Helical
Antenna Posn. : In
Phantom Type : Body
Phantom Posn. : Abdomen
Scan Type : ZOOM/SAR 10g
Probe Name : PCTEST
Field Type : E Field
Orientation : 0 Degrees

Mixture Type = Muscle
Mixture Dielectric Constant = 51.700
Mixture Conductivity = 1.100

Comment :
SAMSUNG DUAL-MODE PHONE - AMPS MODE
CH 0991 Conducted 26.2 dBm
SAMSUNG DUAL-MODE PHONE - HAND SAR

Robot : PCTEST

Probe Offset = 0.25 cm
Sensor Factor = 0.0108
Conversion Factor = 0.894

PCTEST Amplifier Channel Settings : 0.166 0.135 0.132

Max Location : X = -1.000, Y = -2.250, Z = 0.000 (cm) Value = 28.633

Ave. SAR over 10 g (mW/g) = 1.0121

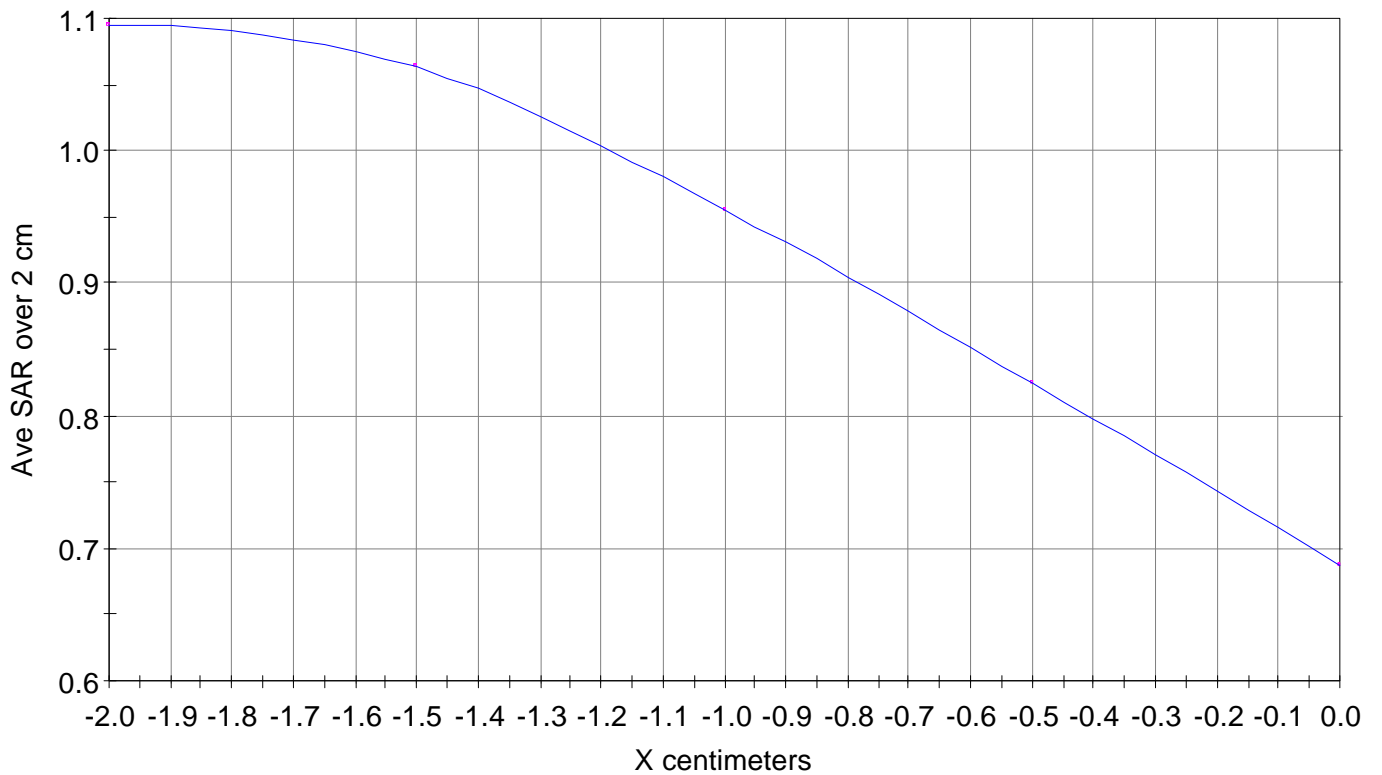
X-Z Plane Slice Y=-2.250

File : 01071203_SAR

Start : 12-Jul-101 11:24:52 am End : 12-Jul-101 11:31:32 am

SAMSUNG/STH-A225/2;824.04MHz;W;Helical/In;

Body/Abdomen;ZOOM/SAR 10g;PCTEST/E Field/0 DegreesMuscle/51.700/1.100

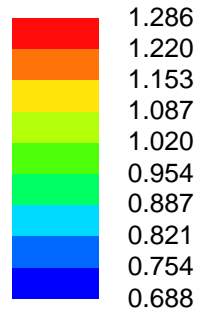
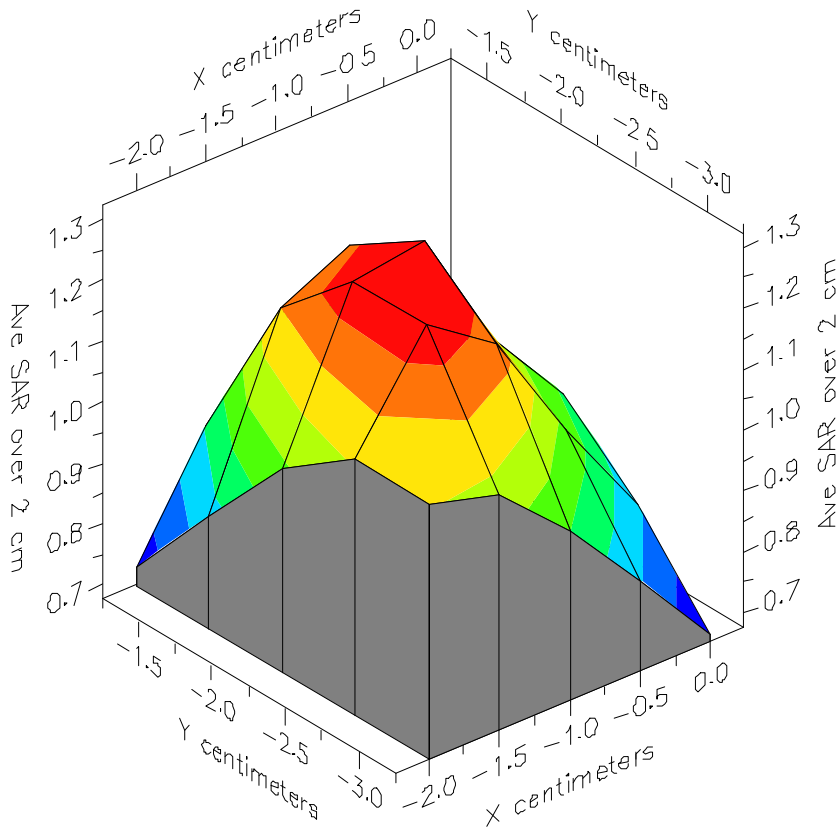


File : 01071203_SAR

Start : 12-Jul-101 11:24:52 am End : 12-Jul-101 11:31:32 am

SAMSUNG/STH-A225/2;824.04MHz;W;Helical/In;

Body/Abdomen;ZOOM/SAR 10g;PCTEST/E Field/0 DegreesMuscle/51.700/1.100

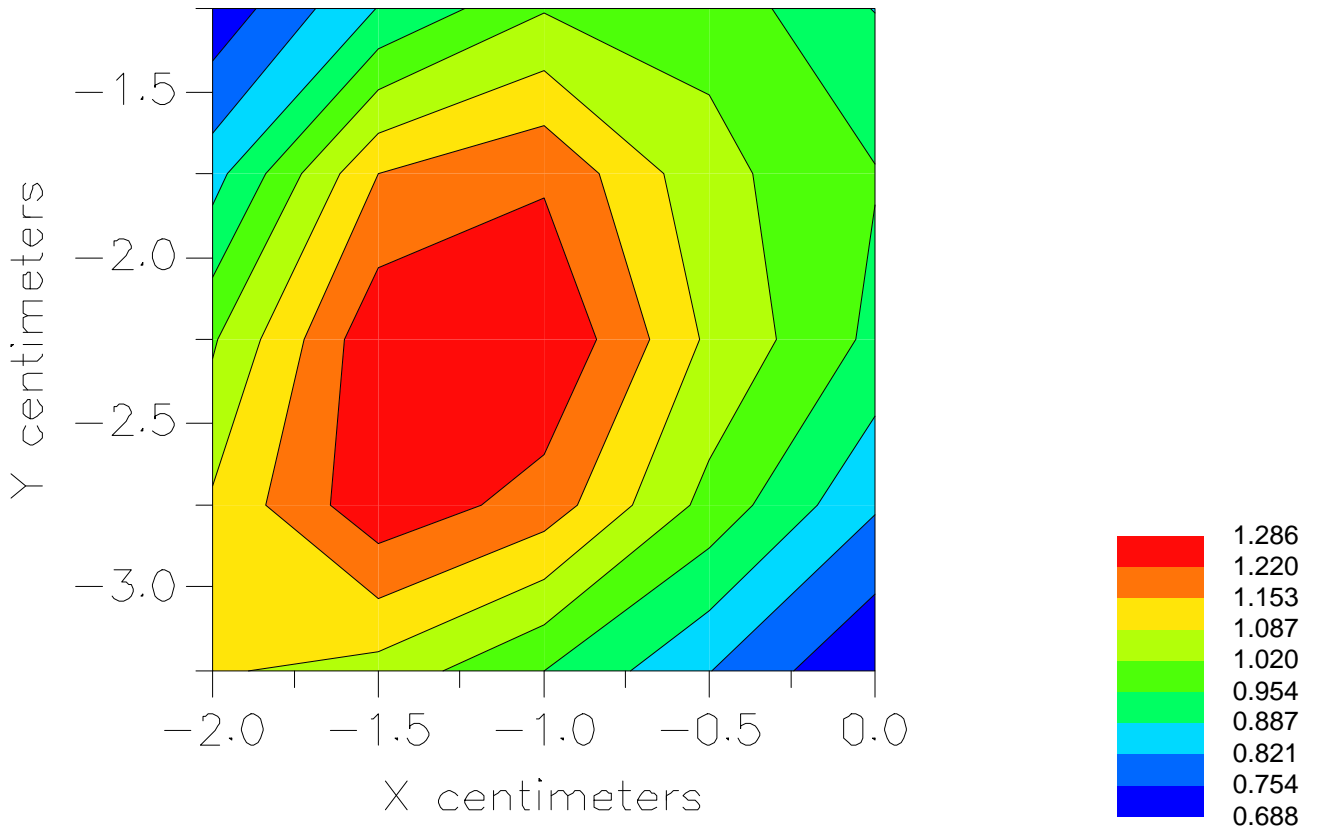


File : 01071203_SAR

Start : 12-Jul-101 11:24:52 am End : 12-Jul-101 11:31:32 am

SAMSUNG/STH-A225/2;824.04MHz;W;Helical/In;

Body/Abdomen;ZOOM/SAR 10g;PCTEST/E Field/0 DegreesMuscle/51.700/1.100



File : c:/idx3/SYSTEM/SARMEAS3/data/Normal/01071202_SAR.VLT
Start : 12-Jul-101 10:59:55 am End : 12-Jul-101 11:06:36 am

Radio Type : SAMSUNG
Model Number : STH-A225
Serial Number : 2
Frequency : 824.04 MHz
Peak Trans. Pwr : 0.420 W
Start Trans. Pwr : 0.420 W
Antenna Type : Helical
Antenna Posn. : Out
Phantom Type : Body
Phantom Posn. : Abdomen
Scan Type : ZOOM/SAR 10g
Probe Name : PCTEST
Field Type : E Field
Orientation : 0 Degrees

Mixture Type = Muscle
Mixture Dielectric Constant = 51.700
Mixture Conductivity = 1.100

Comment :
SAMSUNG DUAL-MODE PHONE - AMPS MODE
CH 0991 Conducted 26.2 dBm
SAMSUNG DUAL-MODE PHONE - HAND SAR

Robot : PCTEST

Probe Offset = 0.25 cm
Sensor Factor = 0.0108
Conversion Factor = 0.894

PCTEST Amplifier Channel Settings : 0.166 0.135 0.132

Max Location : X = -1.500, Y = -2.250, Z = 0.000 (cm) Value = 35.660

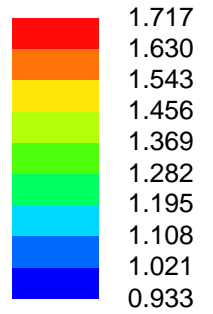
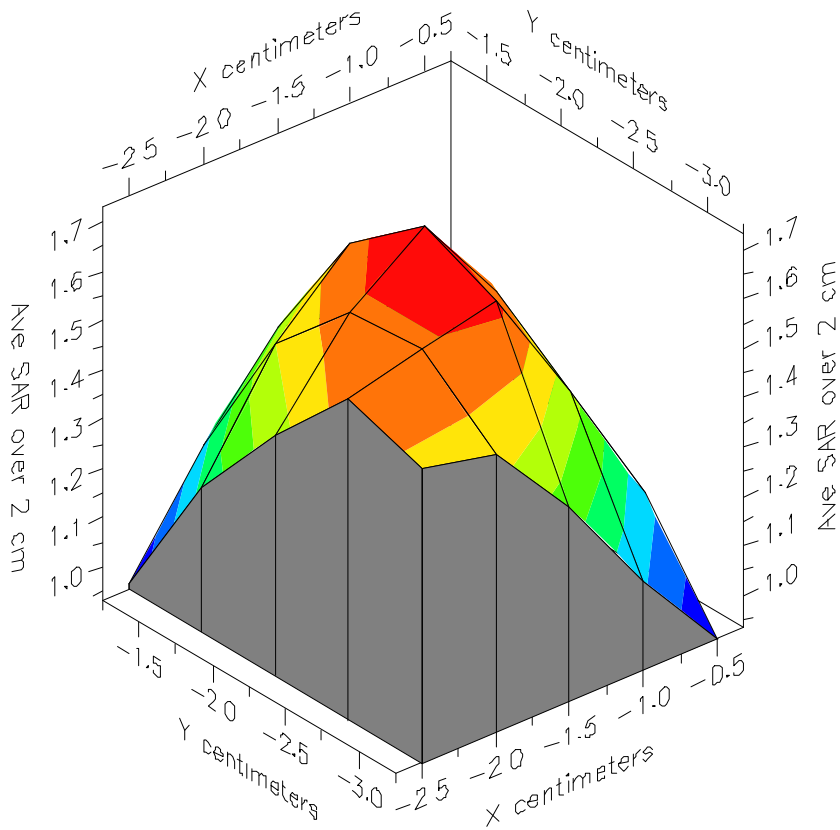
Ave. SAR over 10 g (mW/g) = 1.3651

File : 01071202_SAR

Start : 12-Jul-101 10:59:55 am End : 12-Jul-101 11:06:36 am

SAMSUNG/STH-A225/2;824.04MHz;W;Helical/Out;

Body/Abdomen;ZOOM/SAR 10g;PCTEST/E Field/0 DegreesMuscle/51.700/1.100



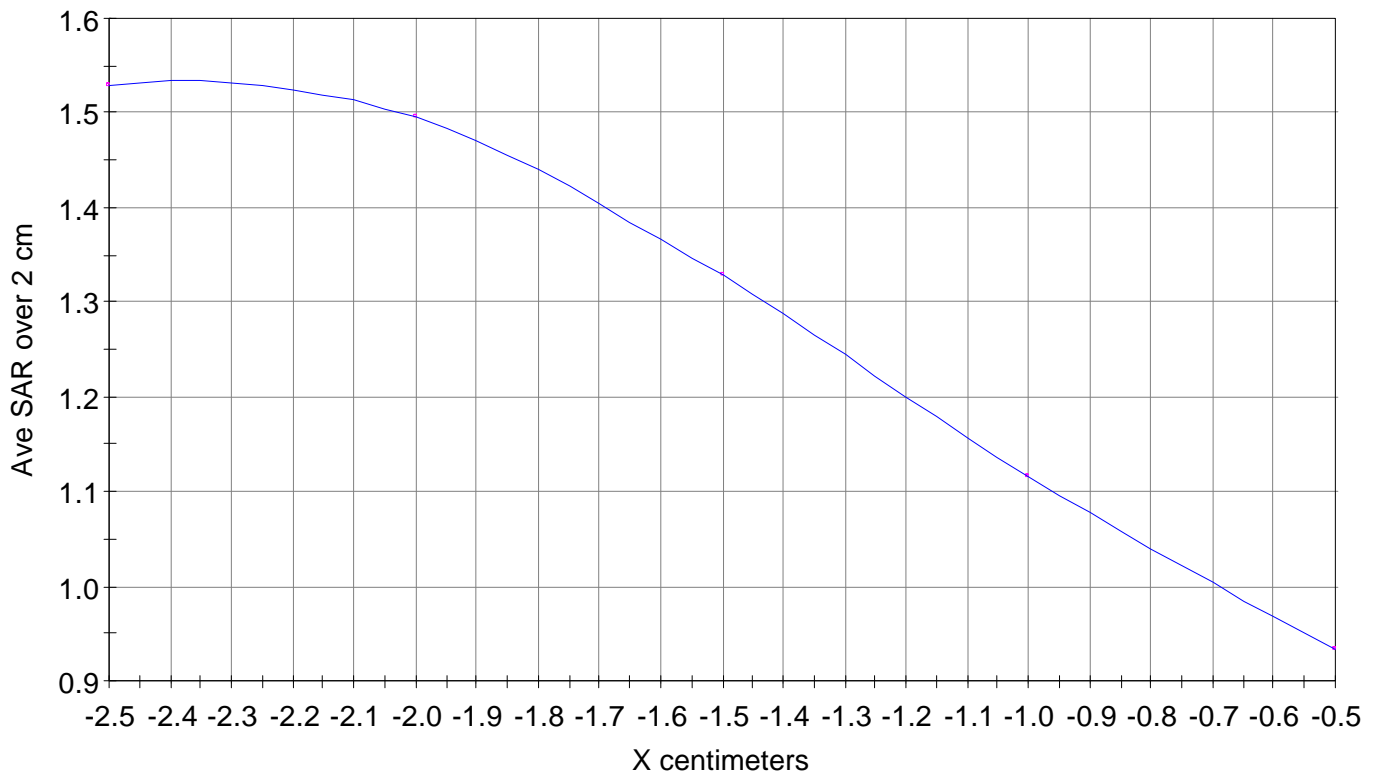
X-Z Plane Slice Y=-2.250

File : 01071202_SAR

Start : 12-Jul-101 10:59:55 am End : 12-Jul-101 11:06:36 am

SAMSUNG/STH-A225/2;824.04MHz;W;Helical/Out;

Body/Abdomen;ZOOM/SAR 10g;PCTEST/E Field/0 DegreesMuscle/51.700/1.100



File : 01071202_SAR

Start : 12-Jul-101 10:59:55 am End : 12-Jul-101 11:06:36 am

SAMSUNG/STH-A225/2;824.04MHz;W;Helical/Out;

Body/Abdomen;ZOOM/SAR 10g;PCTEST/E Field/0 DegreesMuscle/51.700/1.100

