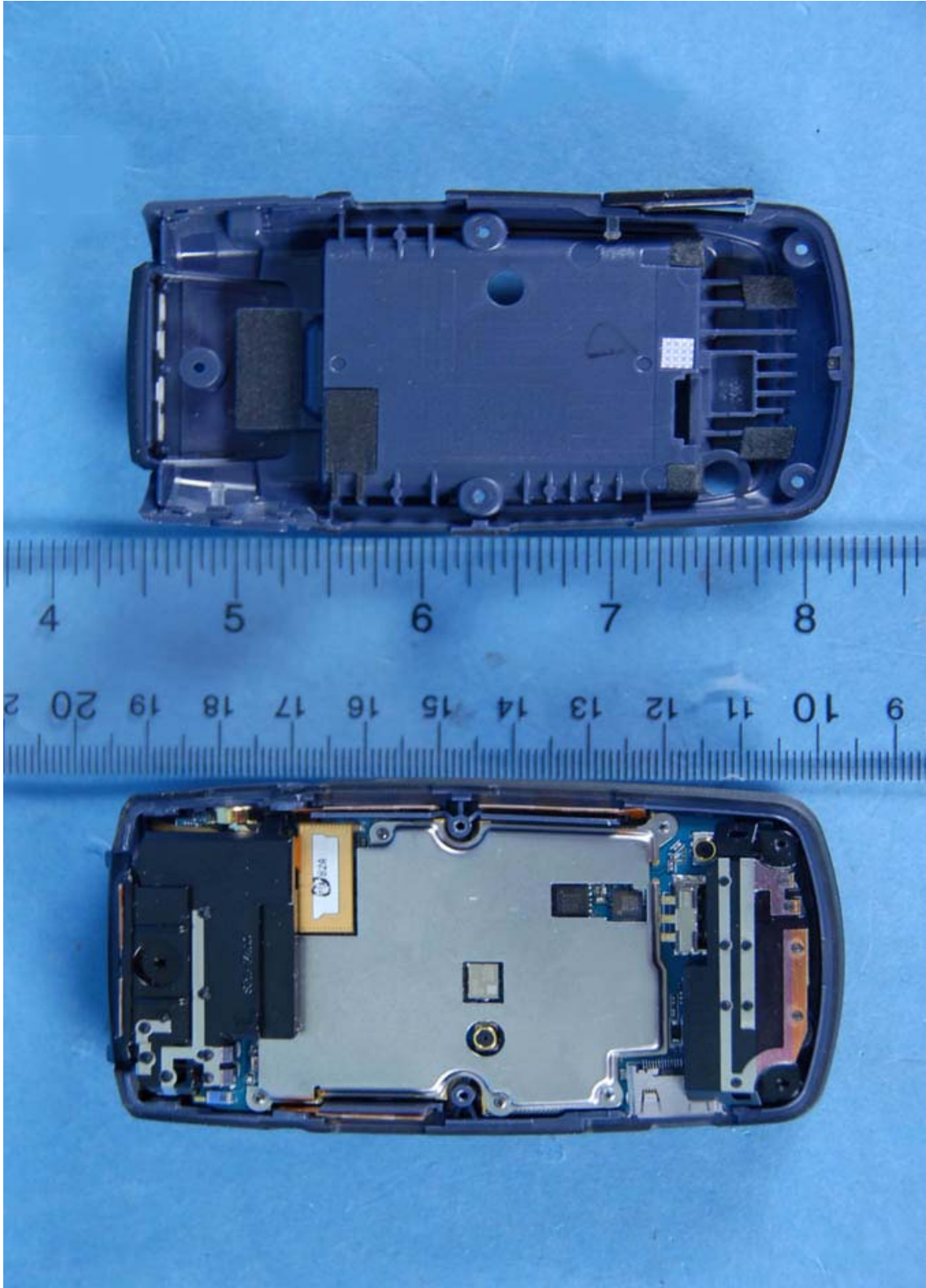

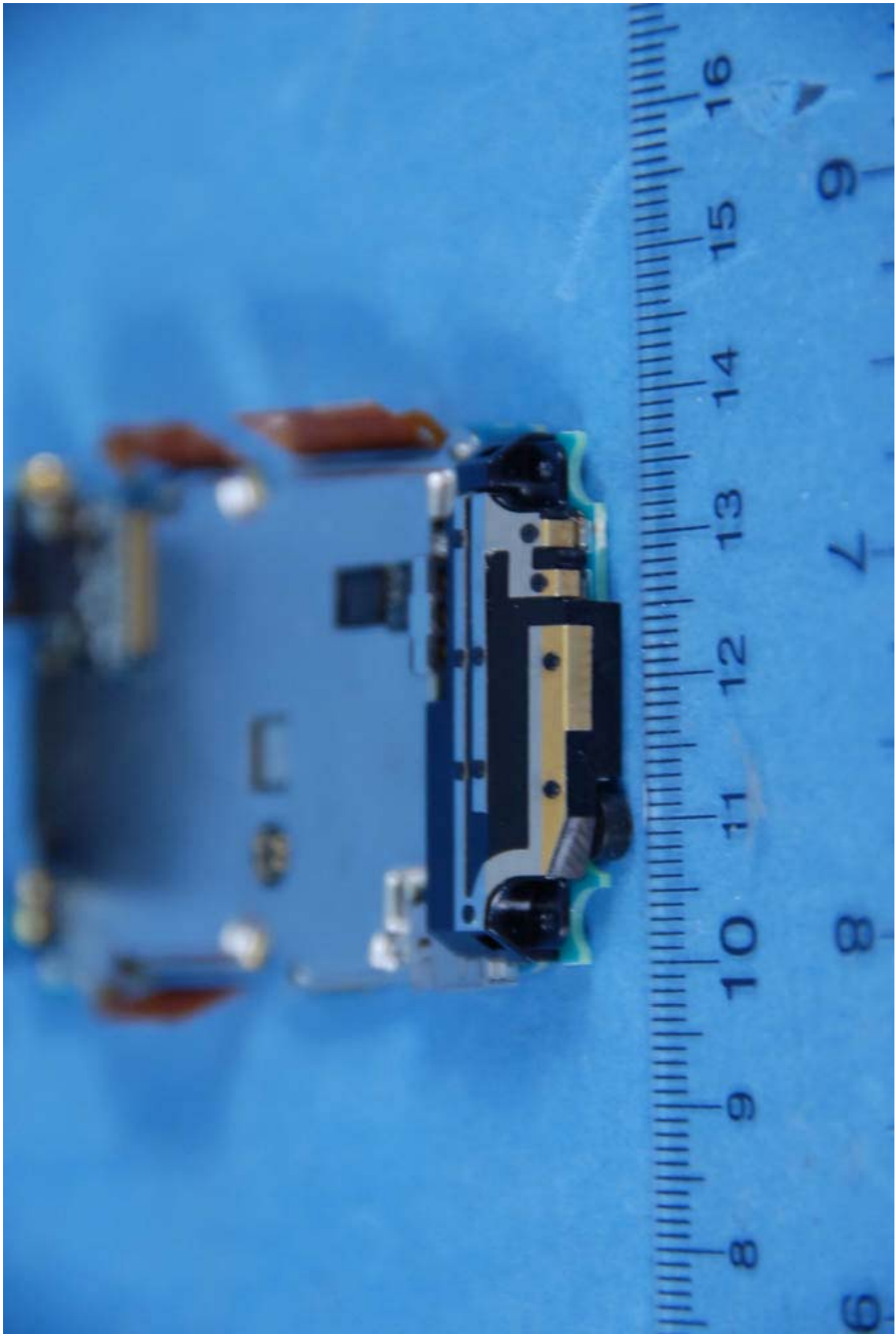



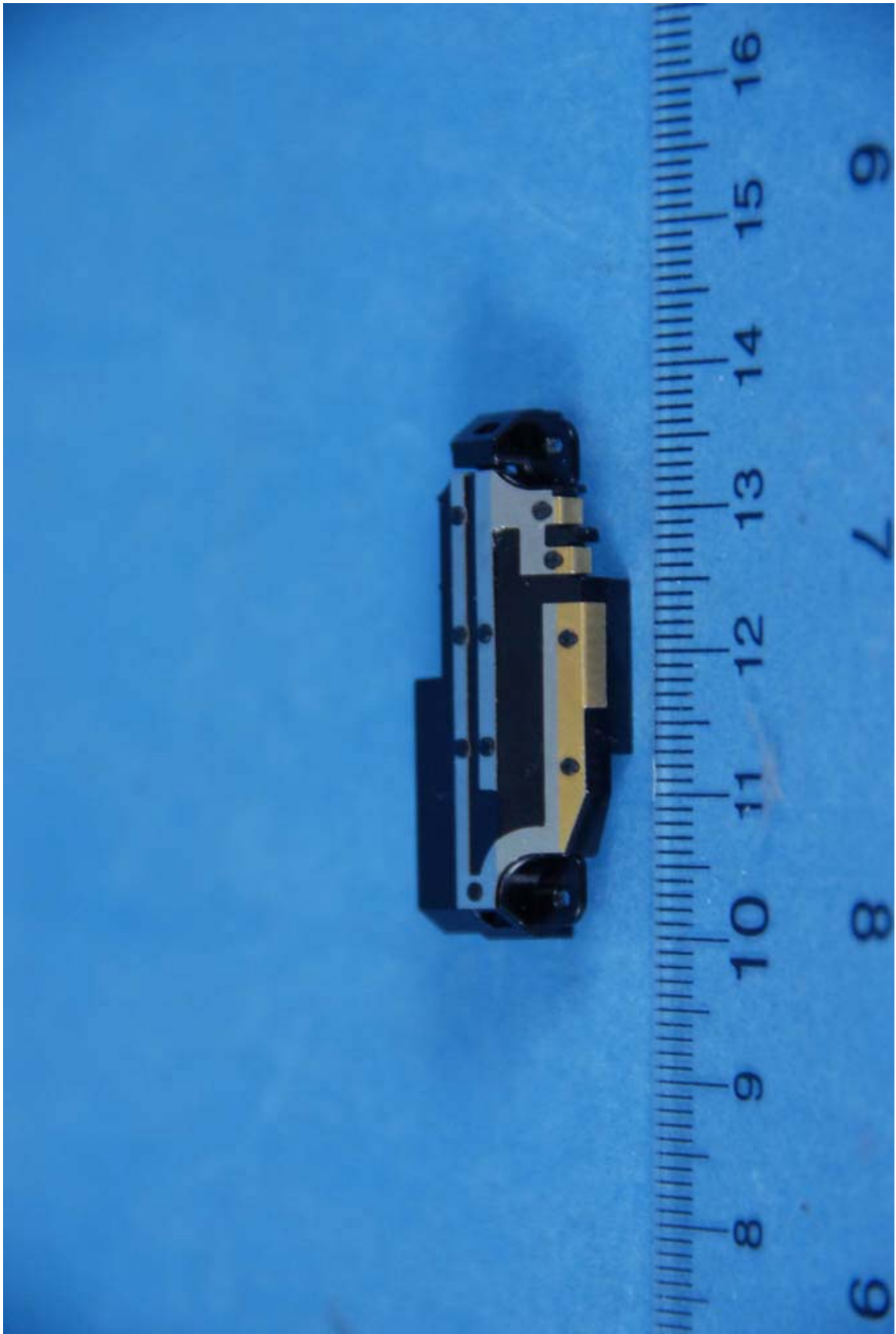
INTERNAL PHOTOGRAPHS




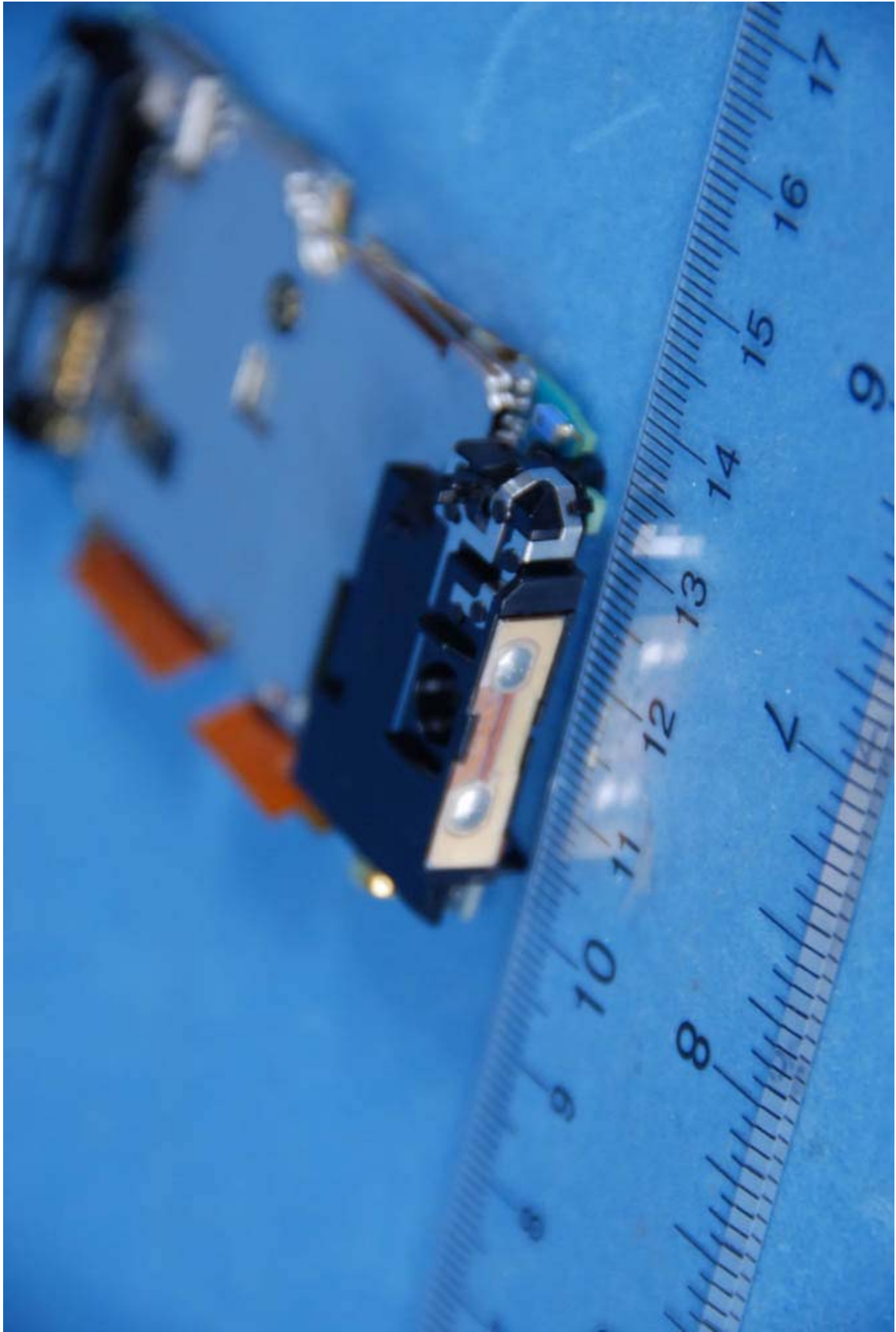
	COMPANY NAME: SAMSUNG Electronics Co., Ltd.		Reviewed by: Quality Manager
FCC ID: A3LSPHZ400	Test Date(s): March 28, 2008	EUT Type: Cellular/PCS CDMA Phone with Bluetooth and EV-DO	Page 1 of 13




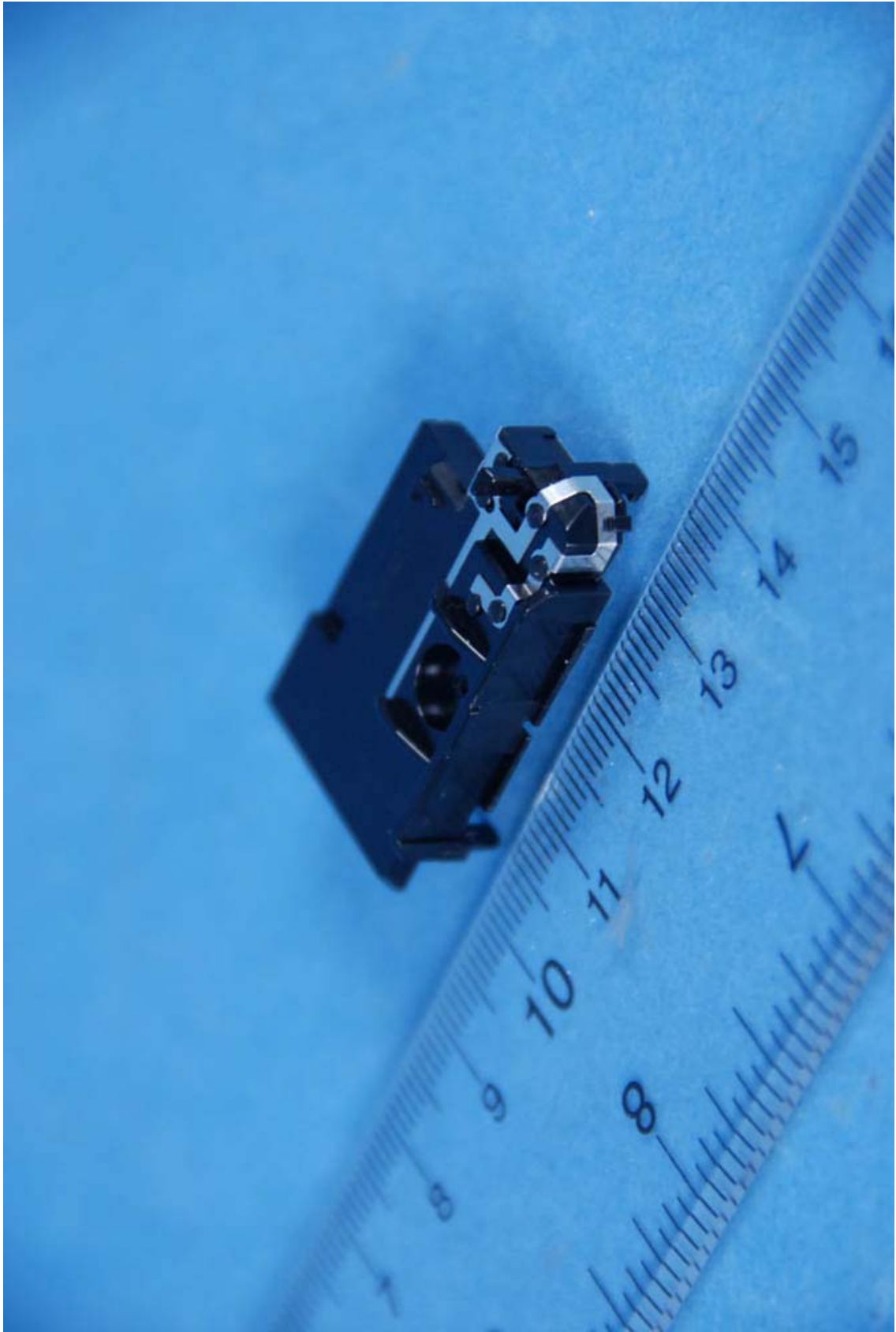
 PCTEST ENGINEERING LABORATORY, INC.	COMPANY NAME: SAMSUNG Electronics Co., Ltd.		Reviewed by: Quality Manager
FCC ID: A3LSPHZ400	Test Date(s): March 28, 2008	EUT Type: Cellular/PCS CDMA Phone with Bluetooth and EV-DO	Page 2 of 13




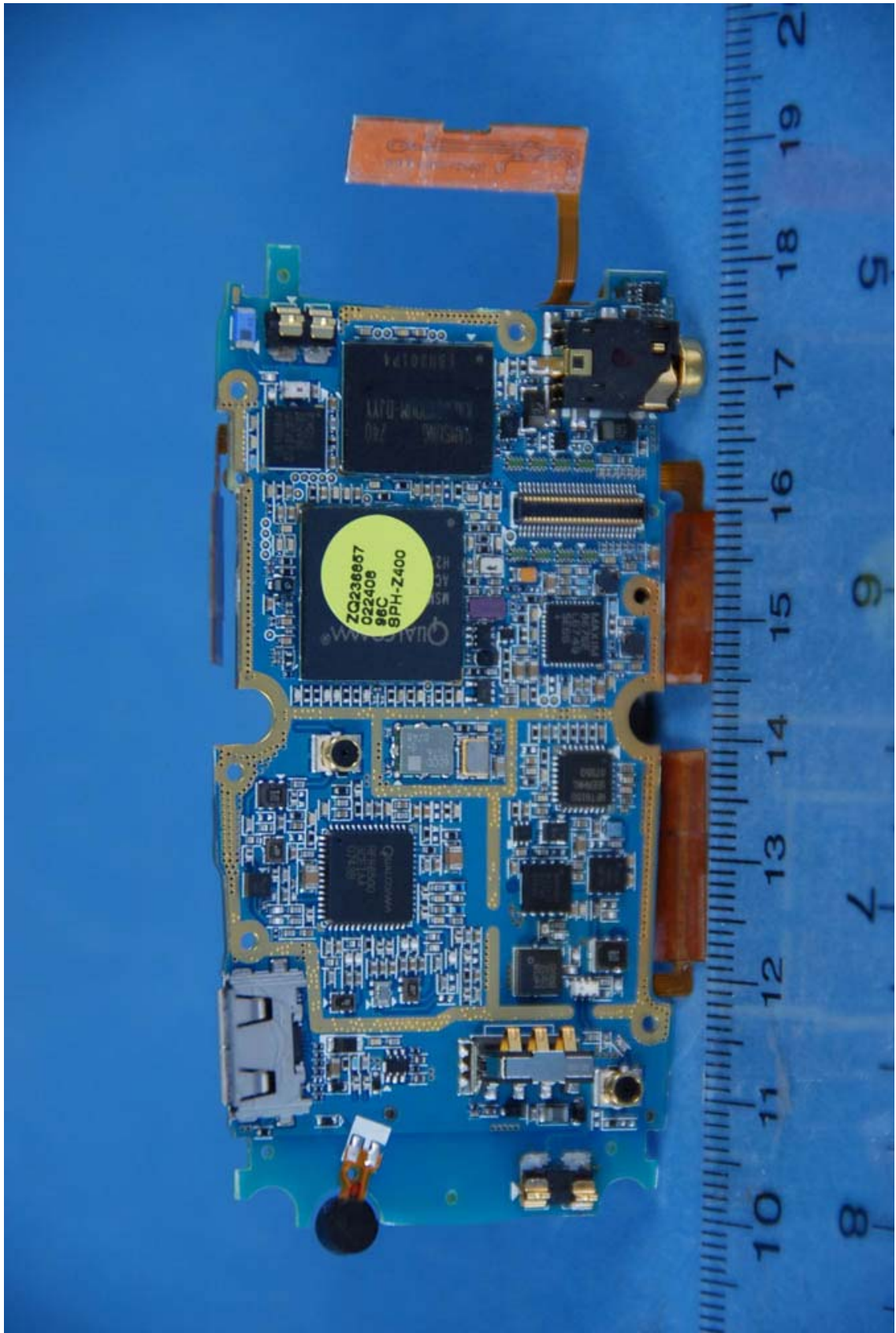
 ENGINEERING LABORATORY, INC.	COMPANY NAME: SAMSUNG Electronics Co., Ltd.		Reviewed by: Quality Manager
FCC ID: A3LSPHZ400	Test Date(s): March 28, 2008	EUT Type: Cellular/PCS CDMA Phone with Bluetooth and EV-DO	Page 3 of 13




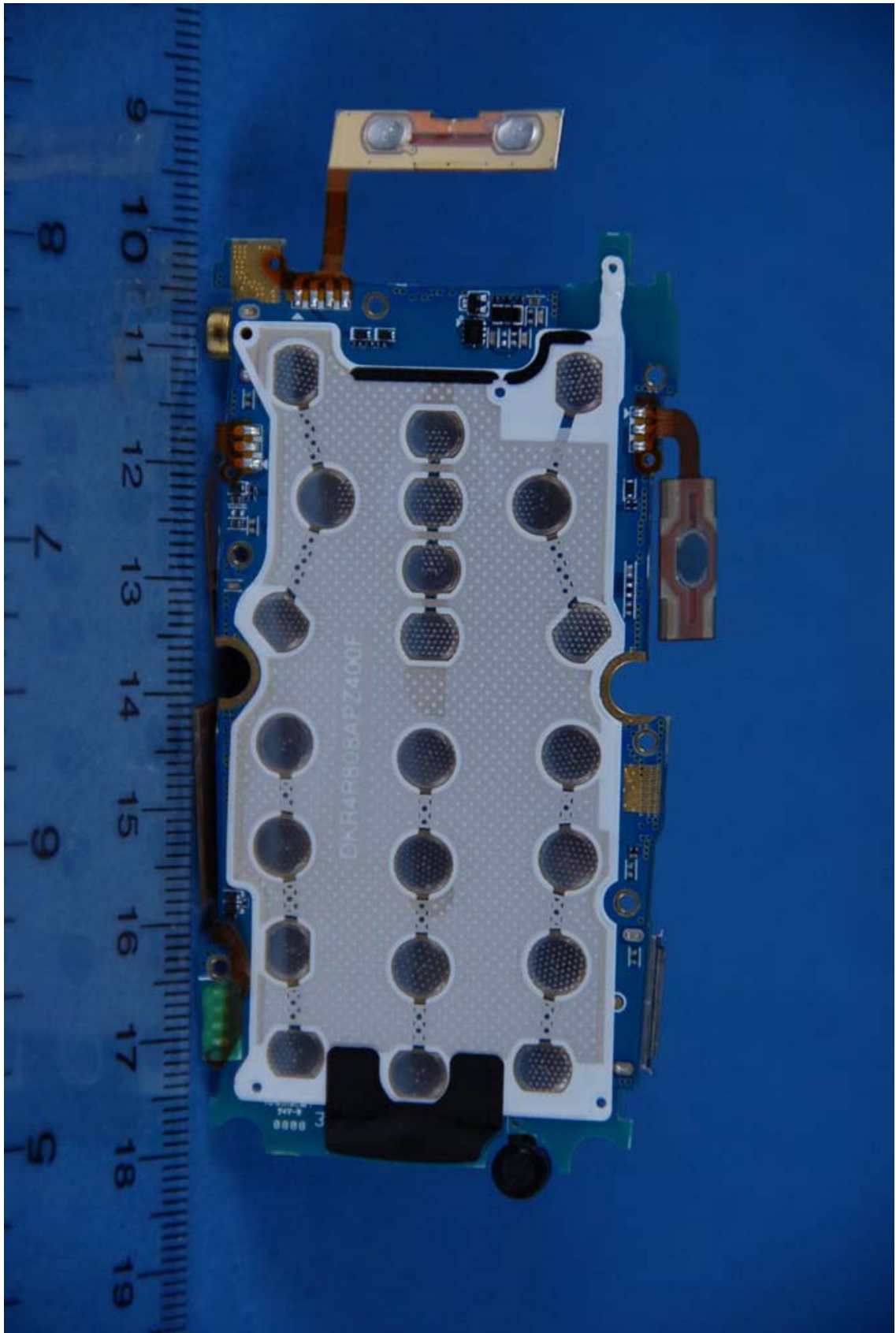
	COMPANY NAME: SAMSUNG Electronics Co., Ltd.		Reviewed by: Quality Manager
FCC ID: A3LSPHZ400	Test Date(s): March 28, 2008	EUT Type: Cellular/PCS CDMA Phone with Bluetooth and EV-DO	Page 4 of 13




 <p>PCTEST ENGINEERING LABORATORY, INC.</p>	COMPANY NAME: SAMSUNG Electronics Co., Ltd.		Reviewed by: Quality Manager
FCC ID: A3LSPHZ400	Test Date(s): March 28, 2008	EUT Type: Cellular/PCS CDMA Phone with Bluetooth and EV-DO	Page 5 of 13




	COMPANY NAME: SAMSUNG Electronics Co., Ltd.		Reviewed by: Quality Manager
FCC ID: A3LSPHZ400	Test Date(s): March 28, 2008	EUT Type: Cellular/PCS CDMA Phone with Bluetooth and EV-DO	Page 6 of 13




 <p>PCTEST ENGINEERING LABORATORY, INC.</p>	<p>COMPANY NAME: SAMSUNG Electronics Co., Ltd.</p>		<p>Reviewed by: Quality Manager</p>
<p>FCC ID: A3LSPHZ400</p>	<p>Test Date(s): March 28, 2008</p>	<p>EUT Type: Cellular/PCS CDMA Phone with Bluetooth and EV-DO</p>	<p>Page 7 of 13</p>




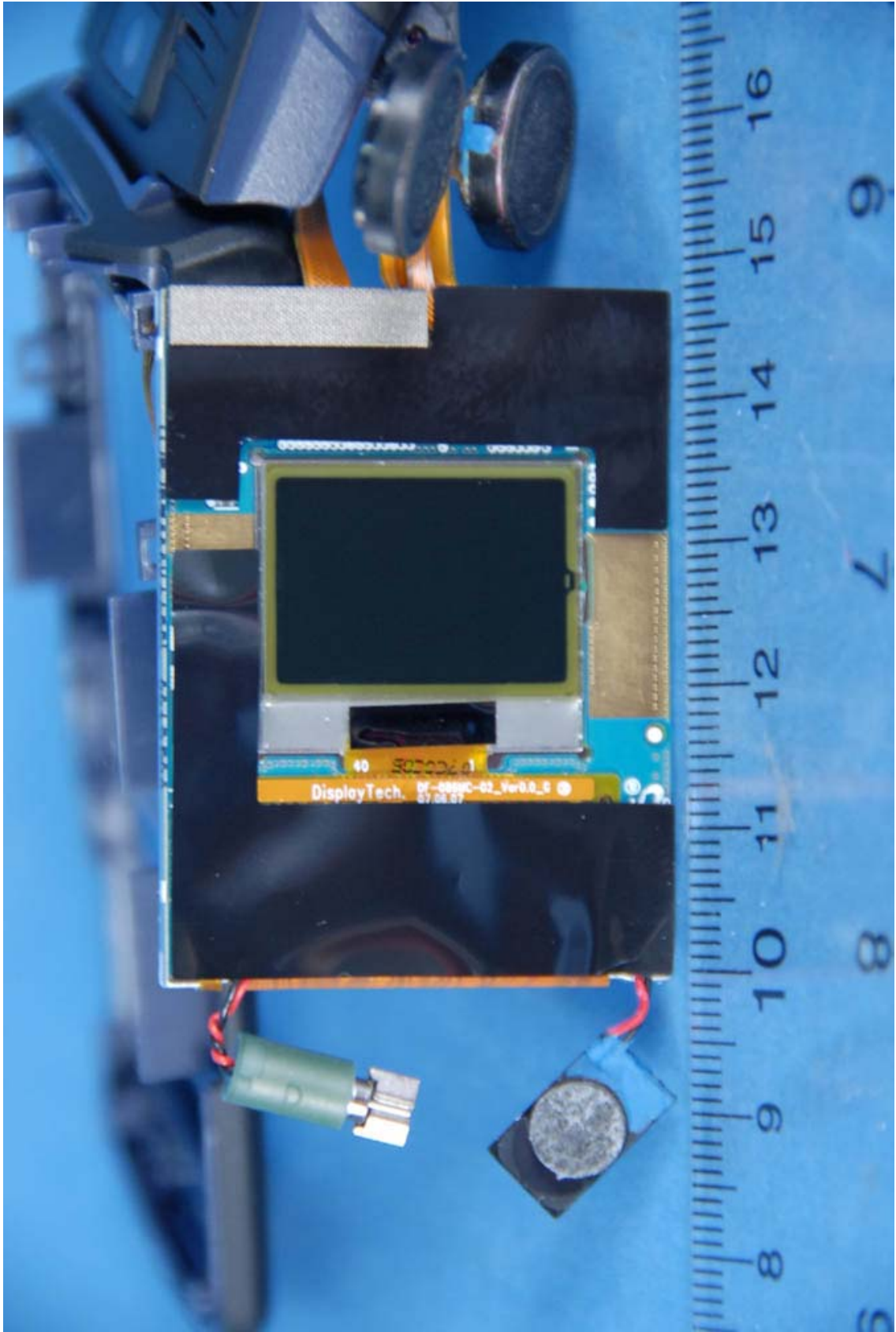
	COMPANY NAME: SAMSUNG Electronics Co., Ltd.		Reviewed by: Quality Manager
FCC ID: A3LSPHZ400	Test Date(s): March 28, 2008	EUT Type: Cellular/PCS CDMA Phone with Bluetooth and EV-DO	Page 8 of 13




	COMPANY NAME: SAMSUNG Electronics Co., Ltd.		Reviewed by: Quality Manager
FCC ID: A3LSPHZ400	Test Date(s): March 28, 2008	EUT Type: Cellular/PCS CDMA Phone with Bluetooth and EV-DO	Page 9 of 13



	COMPANY NAME: SAMSUNG Electronics Co., Ltd.		Reviewed by: Quality Manager
FCC ID: A3LSPHZ400	Test Date(s): March 28, 2008	EUT Type: Cellular/PCS CDMA Phone with Bluetooth and EV-DO	Page 10 of 13



	COMPANY NAME: SAMSUNG Electronics Co., Ltd.		Reviewed by: Quality Manager
FCC ID: A3LSPHZ400	Test Date(s): March 28, 2008	EUT Type: Cellular/PCS CDMA Phone with Bluetooth and EV-DO	Page 11 of 13



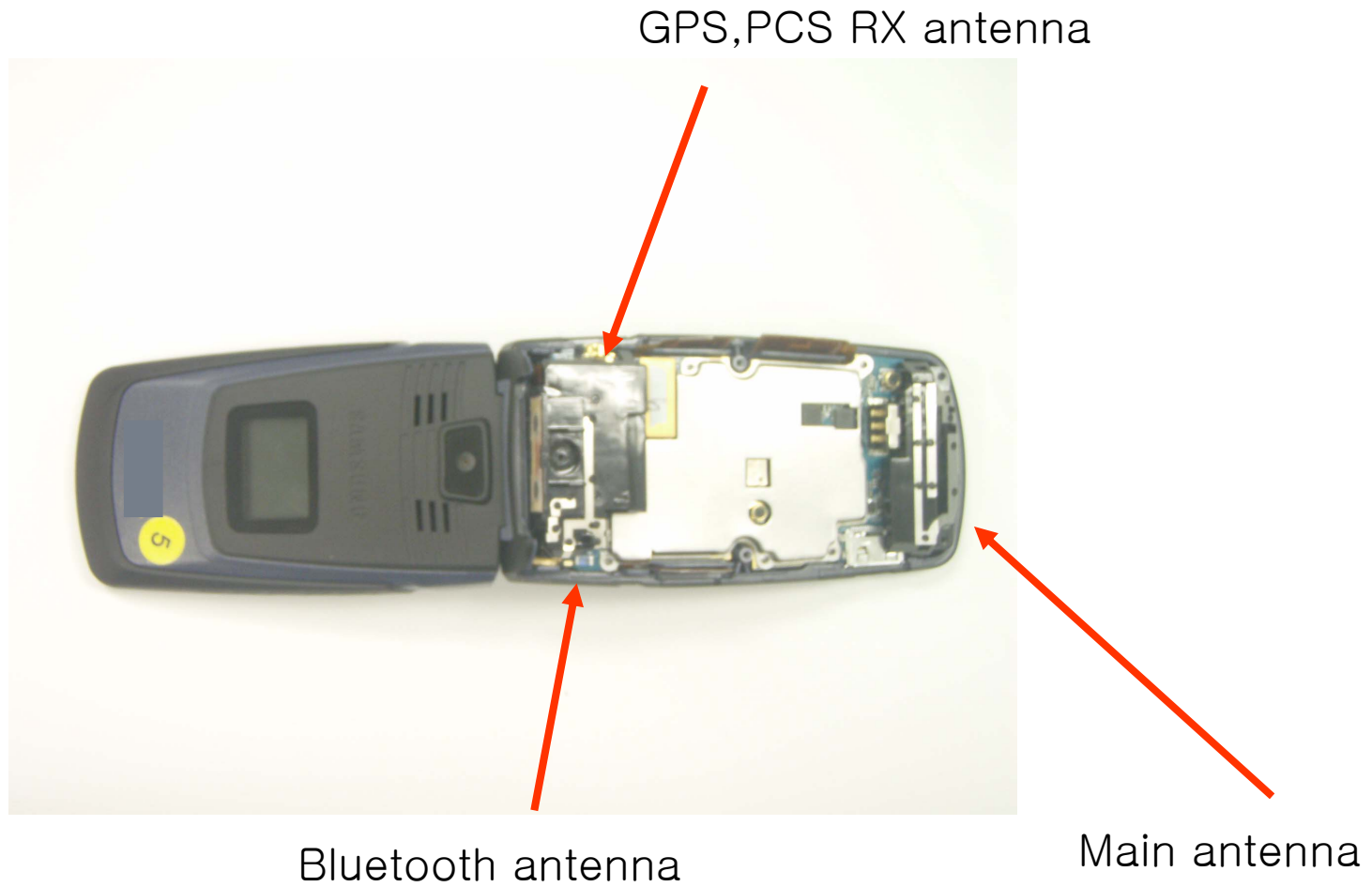
<p>PCTEST ENGINEERING LABORATORY, INC.</p>	<p>COMPANY NAME: SAMSUNG Electronics Co., Ltd.</p>		<p>Reviewed by: Quality Manager</p>
<p>FCC ID: A3LSPHZ400</p>	<p>Test Date(s): March 28, 2008</p>	<p>EUT Type: Cellular/PCS CDMA Phone with Bluetooth and EV-DO</p>	<p>Page 12 of 13</p>



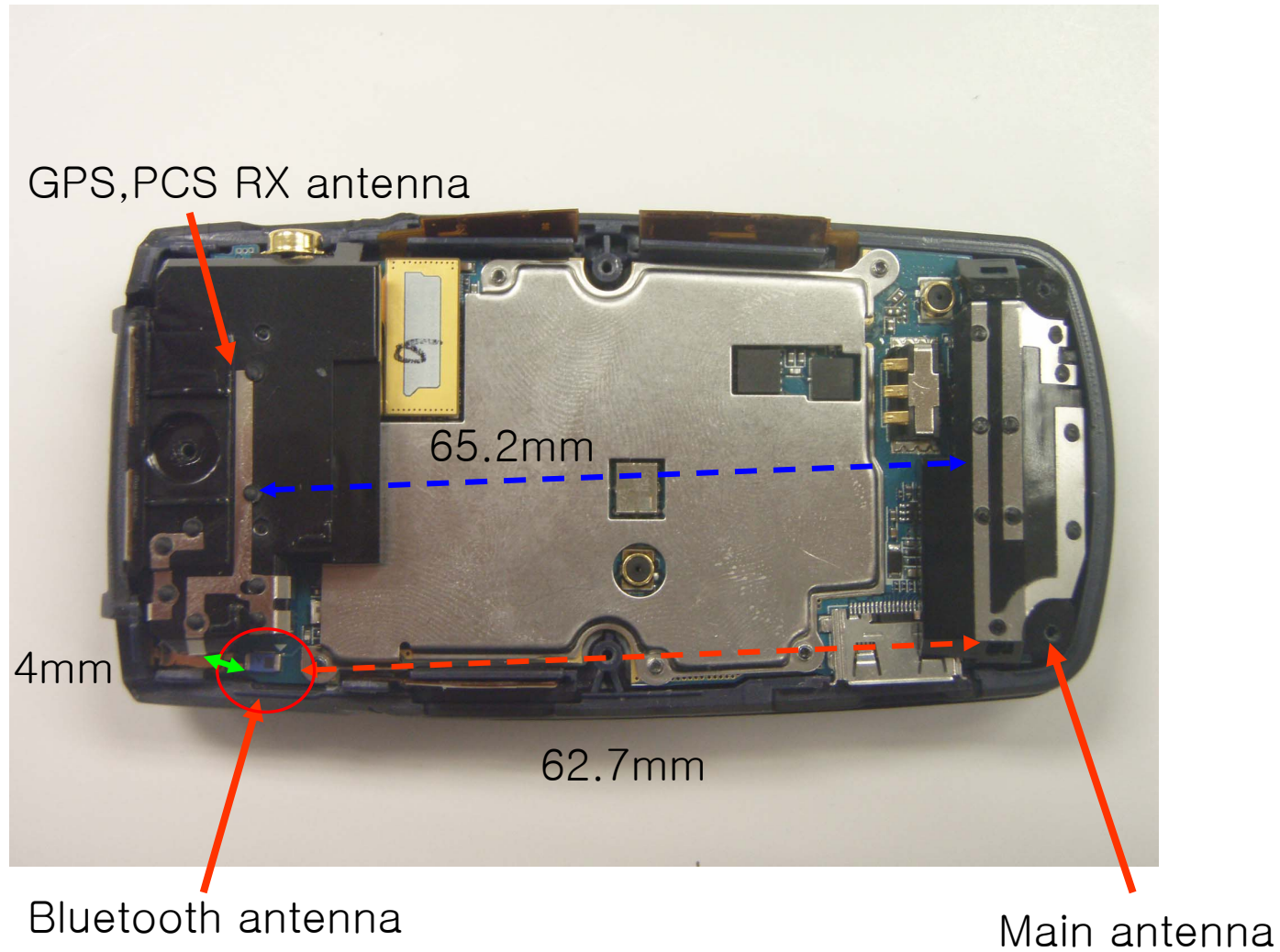
	COMPANY NAME: SAMSUNG Electronics Co., Ltd.		Reviewed by: Quality Manager
FCC ID: A3LSPHZ400	Test Date(s): March 28, 2008	EUT Type: Cellular/PCS CDMA Phone with Bluetooth and EV-DO	Page 13 of 13

SPH-Z400

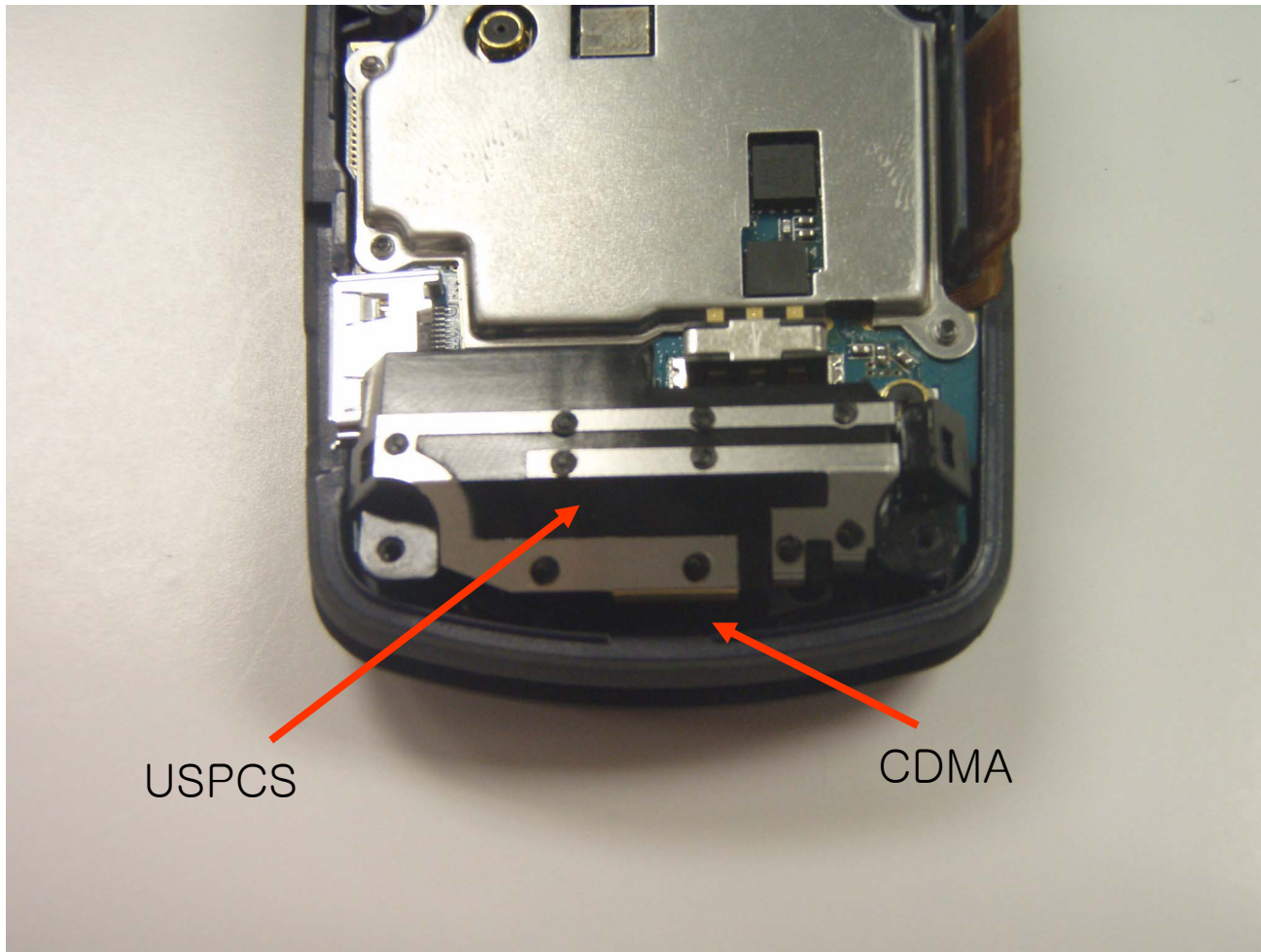
* Placement of each antenna in Folder open



* Placement of each antenna in Folder close



* Antenna pattern



* Distance between Bluetooth antenna and PCS antenna

