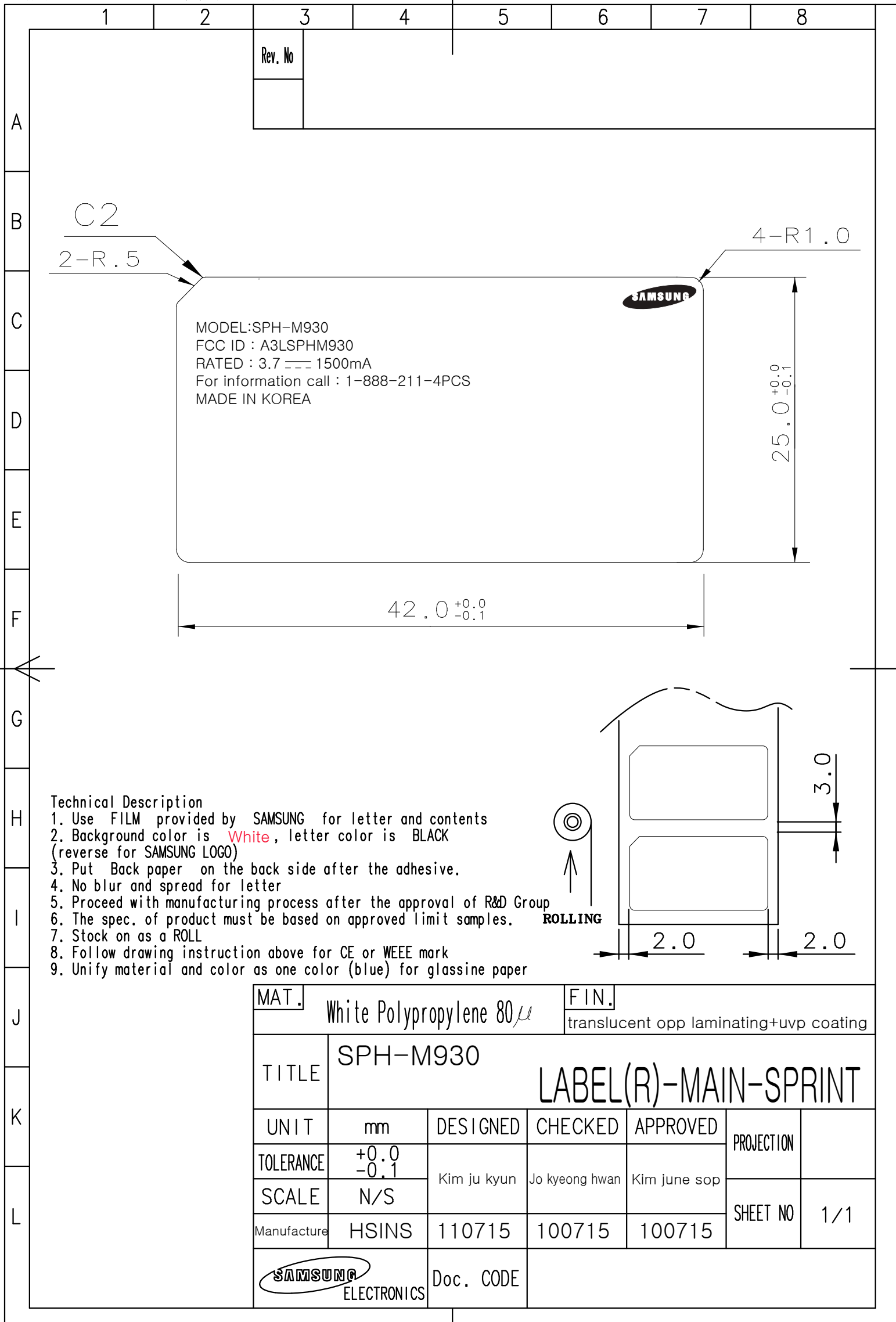


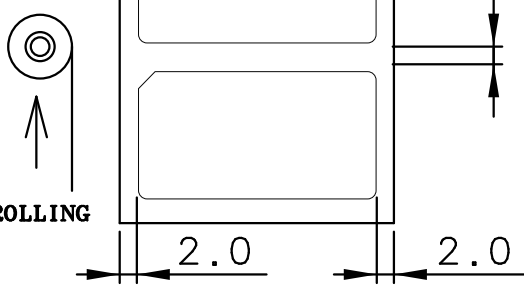
This drawing is property of SEC. Use or copy of this drawing without proper permission from the appropriate technical-document managing department is prohibited.



MODEL:SPH-M930
 FCC ID : A3LSPHM930
 RATED : 3.7 --- 1500mA
 For information call : 1-888-211-4PCS
 MADE IN KOREA

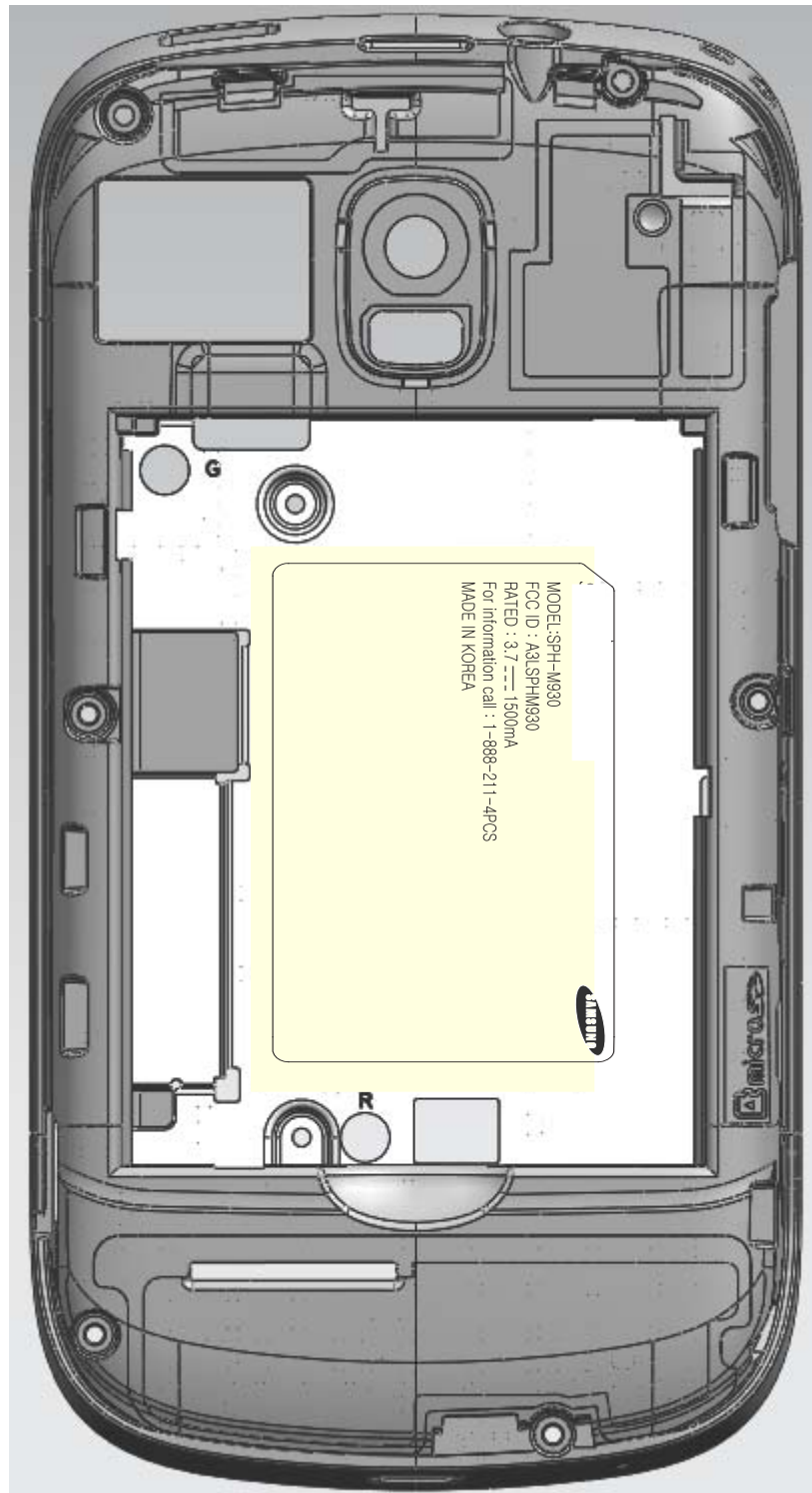
Technical Description

1. Use FILM provided by SAMSUNG for letter and contents
2. Background color is **White**, letter color is **BLACK**
(reverse for SAMSUNG LOGO)
3. Put Back paper on the back side after the adhesive.
4. No blur and spread for letter
5. Proceed with manufacturing process after the approval of R&D Group
6. The spec. of product must be based on approved limit samples.
7. Stock on as a ROLL
8. Follow drawing instruction above for CE or WEEE mark
9. Unify material and color as one color (blue) for glassine paper



MAT. White Polypropylene 80 μ		FIN. translucent opp laminating+uvp coating			
TITLE	SPH-M930		LABEL(R)-MAIN-SPRINT		
UNIT	mm	DESIGNED	CHECKED	APPROVED	PROJECTION
TOLERANCE	+0.0 -0.1	Kim ju kyun	Jo kyeong hwan	Kim june sop	SHEET NO
SCALE	N/S				
Manufacture	HSINS	110715	100715	100715	1/1
		Doc. CODE			





The label is placed inside the battery compartment.