

SAMSUNG FCC ID : A3LSPHM610 835MHz CDMA Head SAR

DUT: SPH-M610; Serial: FD-160-G

Program Name: SPH-M610 CDMA Right(Job No. : FD-160)

Procedure Name: Cheek/Touch, Ch.0777, Intenna, Bat. Standard

Procedure Notes: Meas. Ambient Temp(celsius)-22.1; Tissue Temp(celsius)-21.8;Test Date-01/Sep/2006[OET Bulletin 65-Supplement C, July 2001]

Communication System: CDMA; Frequency: 848.31 MHz;Duty Cycle: 1:1

Medium parameters used: $f = 848.31$ MHz; $\sigma = 0.9$ mho/m; $\epsilon_r = 41.1$; $\rho = 1000$ kg/m³

Phantom section: Right Section

DASY4 Configuration:

- Probe: ES3DV3 - SN3080; ConvF(5.69, 5.69, 5.69); Calibrated: 2006-05-30
- Sensor-Surface: 4mm (Mechanical Surface Detection)
- Electronics: DAE4 Sn686; Calibrated: 2006-05-05
- Phantom: SAM PHANTOM #1; Type: SAM; Serial: TP-1247
- Measurement SW: DASY4, V4.7 Build 44; Postprocessing SW: SEMCAD, V1.8 Build 171

Cheek/Touch, Ch.0777, Intenna, Bat. Standard/Area Scan (51x71x1): Measurement grid: dx=20mm, dy=20mm

Maximum value of SAR (interpolated) = 0.853 mW/g

Cheek/Touch, Ch.0777, Intenna, Bat. Standard/Zoom Scan (5x5x7)/Cube 0:

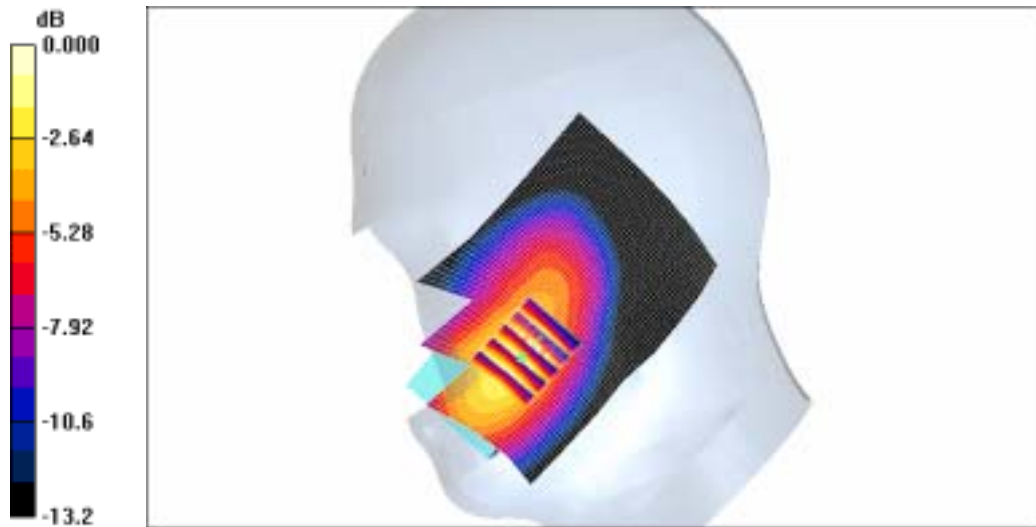
Measurement grid: dx=8mm, dy=8mm, dz=5mm

Reference Value = 21.5 V/m; Power Drift = 0.022 dB

Peak SAR (extrapolated) = 1.90 W/kg

SAR(1 g) = 0.938 mW/g

Maximum value of SAR (measured) = 1.10 mW/g



0 dB = 1.10mW/g

SAMSUNG FCC ID : A3LSPHM610 835MHz CDMA Head SAR

DUT: SPH-M610; Serial: FD-160-G

Program Name: SPH-M610 CDMA Right(Job No. : FD-160)

Procedure Name: Ear/Tilt, Ch.0384, Intenna, Bat. Standard

Procedure Notes: Meas. Ambient Temp(celsius)-21.7; Tissue Temp(celsius)-22.5;Test Date-01/Sep/2006[OET Bulletin 65-Supplement C, July 2001]

Communication System: CDMA; Frequency: 836.52 MHz;Duty Cycle: 1:1

Medium parameters used: $f = 836.52$ MHz; $\sigma = 0.9$ mho/m; $\epsilon_r = 41.1$; $\rho = 1000$ kg/m³

Phantom section: Right Section

DASY4 Configuration:

- Probe: ES3DV3 - SN3080; ConvF(5.69, 5.69, 5.69); Calibrated: 2006-05-30
- Sensor-Surface: 4mm (Mechanical Surface Detection)
- Electronics: DAE4 Sn686; Calibrated: 2006-05-05
- Phantom: SAM PHANTOM #1; Type: SAM; Serial: TP-1247
- Measurement SW: DASY4, V4.7 Build 44; Postprocessing SW: SEMCAD, V1.8 Build 171

Ear/Tilt, Ch.0384, Intenna, Bat. Standard/Area Scan (51x71x1): Measurement grid:

$dx=20$ mm, $dy=20$ mm

Maximum value of SAR (interpolated) = 0.188 mW/g

Ear/Tilt, Ch.0384, Intenna, Bat. Standard/Zoom Scan (5x5x7)/Cube 0: Measurement

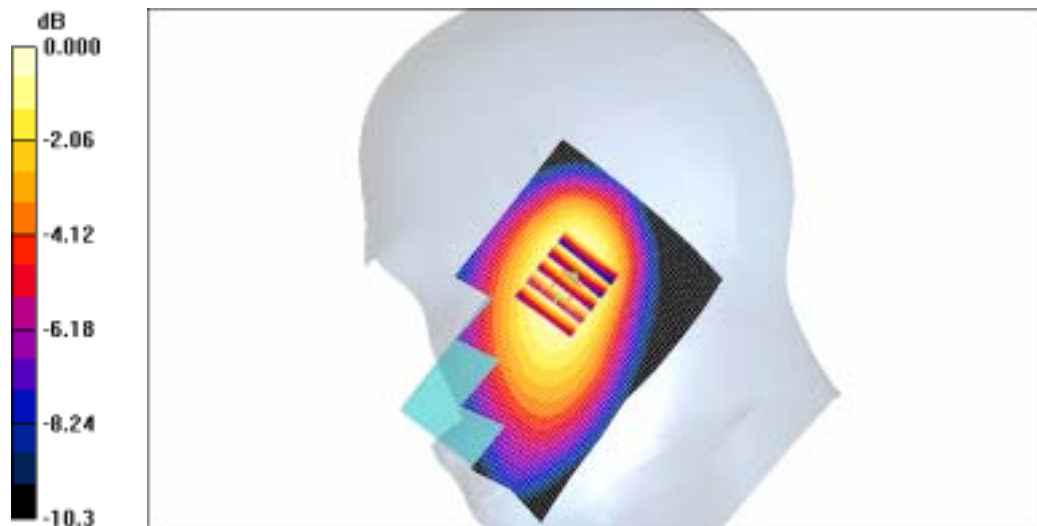
grid: $dx=8$ mm, $dy=8$ mm, $dz=5$ mm

Reference Value = 14.3 V/m; Power Drift = -0.115 dB

Peak SAR (extrapolated) = 0.207 W/kg

SAR(1 g) = 0.166 mW/g

Maximum value of SAR (measured) = 0.173 mW/g



0 dB = 0.173mW/g

SAMSUNG FCC ID : A3LSPHM610 835MHz CDMA Head SAR

DUT: SPH-M610; Serial: FD-160-G

Program Name: SPH-M610 CDMA Left (Job No. : FD-160)

Procedure Name: Cheek/Touch, Ch.0384, Intenna, Bat. Standard

Procedure Notes: Meas. Ambient Temp(celsius)-22.1; Tissue Temp(celsius)-21.8;Test Date-01/Sep/2006[OET Bulletin 65-Supplement C, July 2001]

Communication System: CDMA; Frequency: 836.52 MHz;Duty Cycle: 1:1

Medium parameters used: $f = 836.52$ MHz; $\sigma = 0.9$ mho/m; $\epsilon_r = 41.1$; $\rho = 1000$ kg/m³

Phantom section: Left Section

DASY4 Configuration:

- Probe: ES3DV3 - SN3080; ConvF(5.69, 5.69, 5.69); Calibrated: 2006-05-30
- Sensor-Surface: 4mm (Mechanical Surface Detection)
- Electronics: DAE4 Sn686; Calibrated: 2006-05-05
- Phantom: SAM PHANTOM #1; Type: SAM; Serial: TP-1247
- Measurement SW: DASY4, V4.7 Build 44; Postprocessing SW: SEMCAD, V1.8 Build 171

Cheek/Touch, Ch.0384, Intenna, Bat. Standard/Area Scan (51x71x1): Measurement grid:

dx=20mm, dy=20mm

Maximum value of SAR (interpolated) = 0.371 mW/g

Cheek/Touch, Ch.0384, Intenna, Bat. Standard/Zoom Scan (5x5x7)/Cube 0:

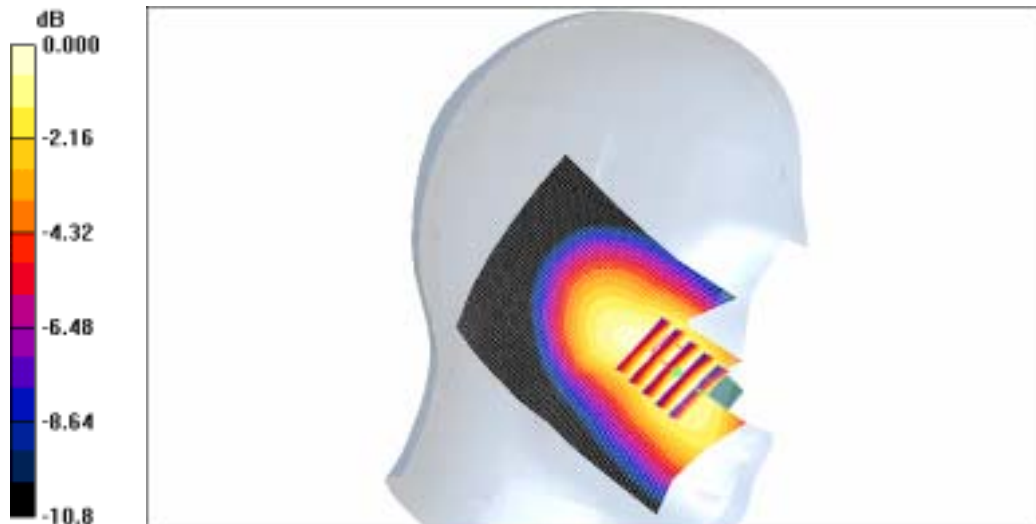
Measurement grid: dx=8mm, dy=8mm, dz=5mm

Reference Value = 3.97 V/m; Power Drift = 0.045 dB

Peak SAR (extrapolated) = 0.514 W/kg

SAR(1 g) = 0.354 mW/g

Maximum value of SAR (measured) = 0.384 mW/g



0 dB = 0.384mW/g

SAMSUNG FCC ID : A3LSPHM610 835MHz CDMA Head SAR

DUT: SPH-M610; Serial: FD-160-G

Program Name: SPH-M610 CDMA Left (Job No. : FD-160)

Procedure Name: Ear/Tilt, Ch.0384, Intenna, Bat. Standard

Procedure Notes: Meas. Ambient Temp(celsius)-22.1; Tissue Temp(celsius)-21.8; Test Date-01/Sep/2006 [OET Bulletin 65-Supplement C, July 2001]

Communication System: CDMA; Frequency: 836.52 MHz; Duty Cycle: 1:1

Medium parameters used: $f = 836.52$ MHz; $\sigma = 0.9$ mho/m; $\epsilon_r = 41.1$; $\rho = 1000$ kg/m³

Phantom section: Left Section

DASY4 Configuration:

- Probe: ES3DV3 - SN3080; ConvF(5.69, 5.69, 5.69); Calibrated: 2006-05-30
- Sensor-Surface: 4mm (Mechanical Surface Detection)
- Electronics: DAE4 Sn686; Calibrated: 2006-05-05
- Phantom: SAM PHANTOM #1; Type: SAM; Serial: TP-1247
- Measurement SW: DASY4, V4.7 Build 44; Postprocessing SW: SEMCAD, V1.8 Build 171

Ear/Tilt, Ch.0384, Intenna, Bat. Standard/Area Scan (51x71x1): Measurement grid:

$dx=20$ mm, $dy=20$ mm

Maximum value of SAR (interpolated) = 0.171 mW/g

Ear/Tilt, Ch.0384, Intenna, Bat. Standard/Zoom Scan (5x5x7)/Cube 0: Measurement

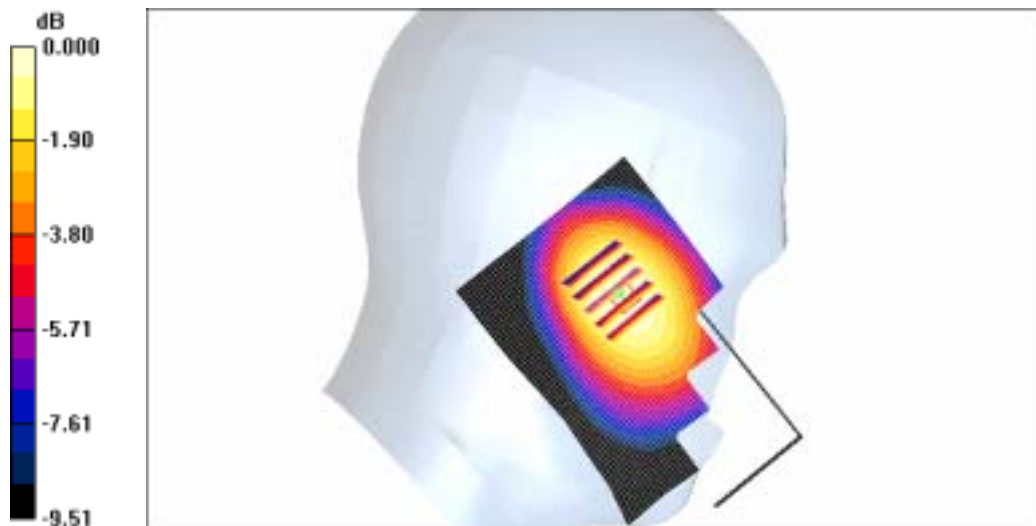
grid: $dx=8$ mm, $dy=8$ mm, $dz=5$ mm

Reference Value = 13.2 V/m; Power Drift = 0.115 dB

Peak SAR (extrapolated) = 0.194 W/kg

SAR(1 g) = 0.157 mW/g

Maximum value of SAR (measured) = 0.165 mW/g



0 dB = 0.165mW/g

SAMSUNG FCC ID : A3LSPHM610 835MHz CDMA Body SAR

DUT: SPH-M610(Body); Serial: FD-160-G

Program Name: SPH-M610 CDMA Body (Job No. : FD-160)

Procedure Name: Body, Ch. 0777, Ant. Intenna, Bat. Standard

Procedure Notes: Meas.Tissue Temp(celsius)-21.8, Ambient Temp-22.0Test Date-01/Sep/2006[OET Bulletin 65-Supplement C, July 2001]

Communication System: CDMA; Frequency: 848.31 MHz;Duty Cycle: 1:1

Medium parameters used: $f = 848.31$ MHz; $\sigma = 0.98$ mho/m; $\epsilon_r = 53.7$; $\rho = 1000$ kg/m³

Phantom section: Flat Section

DASY4 Configuration:

- Probe: ES3DV3 - SN3080; ConvF(5.75, 5.75, 5.75); Calibrated: 2006-05-30
- Sensor-Surface: 4mm (Mechanical Surface Detection)
- Electronics: DAE4 Sn686; Calibrated: 2006-05-05
- Phantom: SAM PHANTOM #2; Type: SAM; Serial: TP-1248
- Measurement SW: DASY4, V4.7 Build 44; Postprocessing SW: SEMCAD, V1.8 Build 171

Body, Ch. 0777, Ant. Intenna, Bat. Standard/Area Scan (51x71x1): Measurement grid: dx=20mm, dy=20mm

Maximum value of SAR (interpolated) = 0.667 mW/g

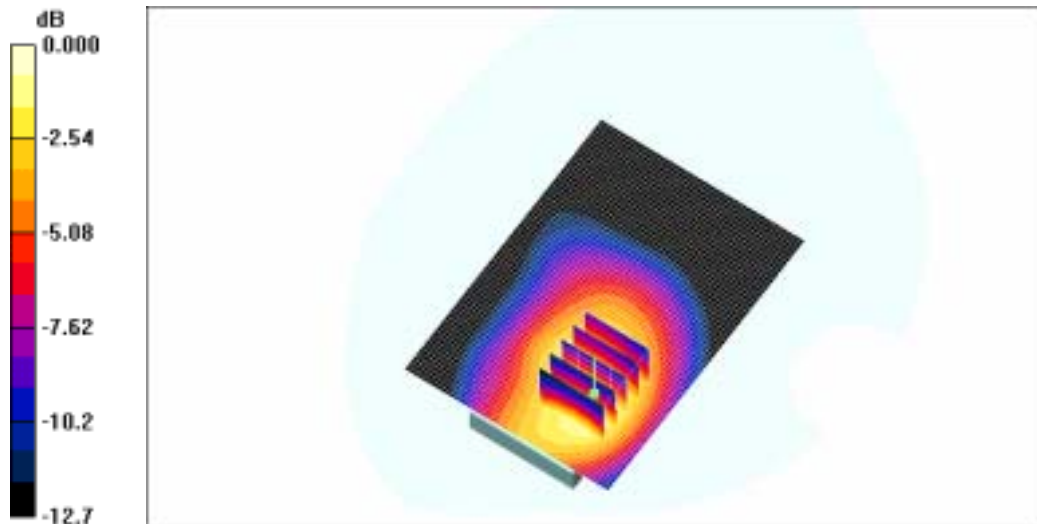
Body, Ch. 0777, Ant. Intenna, Bat. Standard/Zoom Scan (5x5x7)/Cube 0: Measurement grid: dx=8mm, dy=8mm, dz=5mm

Reference Value = 7.76 V/m; Power Drift = 0.136 dB

Peak SAR (extrapolated) = 0.989 W/kg

SAR(1 g) = 0.646 mW/g

Maximum value of SAR (measured) = 0.695 mW/g



0 dB = 0.695mW/g

SAMSUNG FCC ID : A3LSPHM610 835MHz PCS Head SAR

DUT: SPH-M610; Serial: FD-160-G

Program Name: SPH-M610 PCS Right (Job No. : FD-160)

Procedure Name: Cheek/Touch, Ch.0600, Intenna, Bat. Standard

Procedure Notes: Meas. Ambient Temp(celsius)-22.2; Tissue Temp(celsius)-21.5;Test Date-31/Aug/2006[OET Bulletin 65-Supplement C, July 2001]

Communication System: PCS; Frequency: 1880 MHz;Duty Cycle: 1:1

Medium parameters used: $f = 1880$ MHz; $\sigma = 1.36$ mho/m; $\epsilon_r = 39.2$; $\rho = 1000$ kg/m³

Phantom section: Right Section

DASY4 Configuration:

- Probe: ES3DV3 - SN3080; ConvF(5, 5, 5); Calibrated: 2006-05-30
- Sensor-Surface: 4mm (Mechanical Surface Detection)
- Electronics: DAE4 Sn686; Calibrated: 2006-05-05
- Phantom: SAM PHANTOM #2; Type: SAM; Serial: TP-1248
- Measurement SW: DASY4, V4.7 Build 44; Postprocessing SW: SEMCAD, V1.8 Build 171

Cheek/Touch, Ch.0600, Intenna, Bat. Standard/Area Scan (51x71x1): Measurement grid: dx=20mm, dy=20mm

Maximum value of SAR (interpolated) = 1.26 mW/g

Cheek/Touch, Ch.0600, Intenna, Bat. Standard/Zoom Scan (5x5x7)/Cube 0:

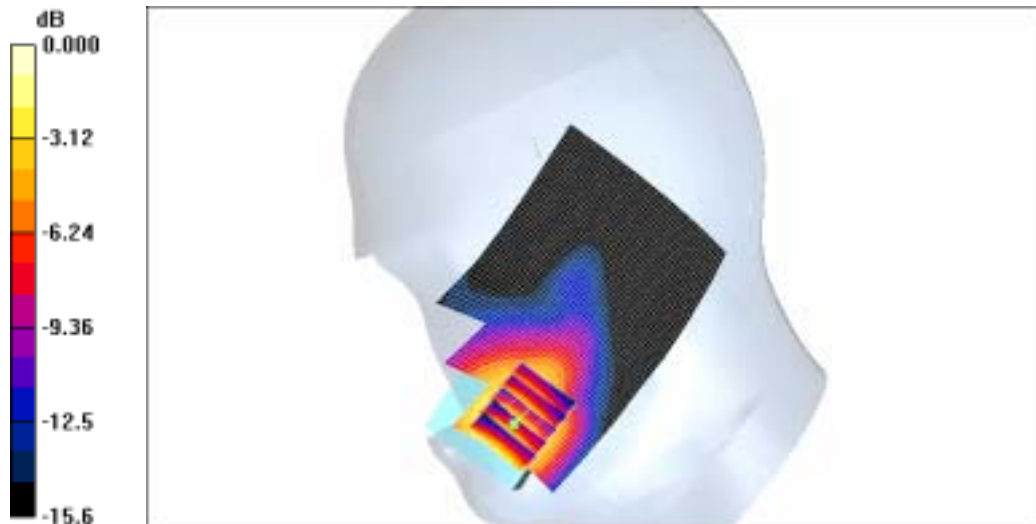
Measurement grid: dx=8mm, dy=8mm, dz=5mm

Reference Value = 7.87 V/m; Power Drift = 0.139 dB

Peak SAR (extrapolated) = 1.55 W/kg

SAR(1 g) = 1.09 mW/g

Maximum value of SAR (measured) = 1.17 mW/g



0 dB = 1.17mW/g

SAMSUNG FCC ID : A3LSPHM610 835MHz PCS Head SAR

DUT: SPH-M610; Serial: FD-160-G

Program Name: SPH-M610 PCS Right (Job No. : FD-160)

Procedure Name: Ear/Tilt, Ch.0600, Intenna, Bat. Standard

Procedure Notes: Meas. Ambient Temp(celsius)-22.2; Tissue Temp(celsius)-21.5;Test Date-31/Aug/2006[OET Bulletin 65-Supplement C, July 2001]

Communication System: PCS; Frequency: 1880 MHz;Duty Cycle: 1:1

Medium parameters used: $f = 1880$ MHz; $\sigma = 1.36$ mho/m; $\epsilon_r = 39.2$; $\rho = 1000$ kg/m³

Phantom section: Right Section

DASY4 Configuration:

- Probe: ES3DV3 - SN3080; ConvF(5, 5, 5); Calibrated: 2006-05-30
- Sensor-Surface: 4mm (Mechanical Surface Detection)
- Electronics: DAE4 Sn686; Calibrated: 2006-05-05
- Phantom: SAM PHANTOM #2; Type: SAM; Serial: TP-1248
- Measurement SW: DASY4, V4.7 Build 44; Postprocessing SW: SEMCAD, V1.8 Build 171

Ear/Tilt, Ch.0600, Intenna, Bat. Standard/Area Scan (51x71x1): Measurement grid:

$dx=20$ mm, $dy=20$ mm

Maximum value of SAR (interpolated) = 0.137 mW/g

Ear/Tilt, Ch.0600, Intenna, Bat. Standard/Zoom Scan (5x5x7)/Cube 0: Measurement

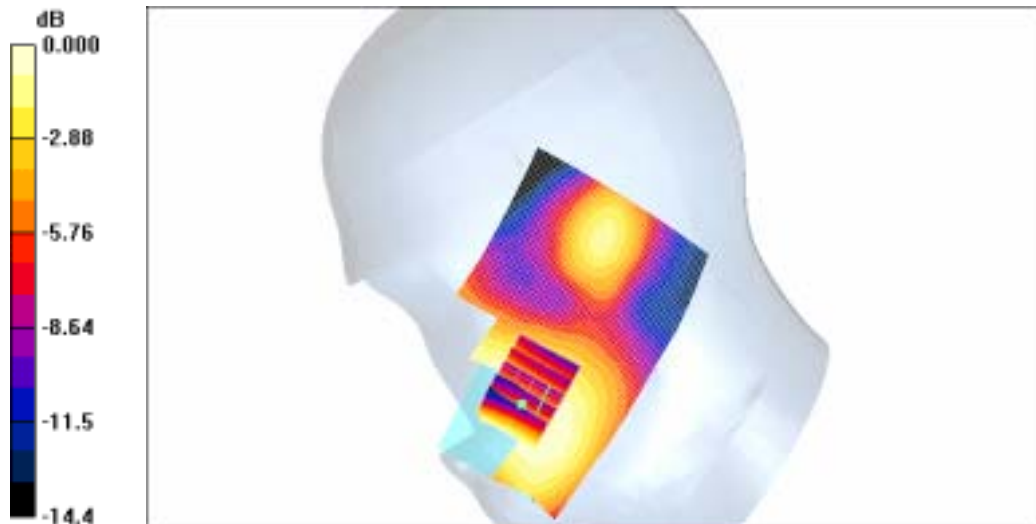
grid: $dx=8$ mm, $dy=8$ mm, $dz=5$ mm

Reference Value = 3.68 V/m; Power Drift = -0.194 dB

Peak SAR (extrapolated) = 0.168 W/kg

SAR(1 g) = 0.118 mW/g

Maximum value of SAR (measured) = 0.125 mW/g



0 dB = 0.125mW/g

SAMSUNG FCC ID : A3LSPHM610 835MHz PCS Head SAR

DUT: SPH-M610; Serial: FD-160-G

Program Name: SPH-M610 PCS Left (Job No. : FD-160)

Procedure Name: Cheek/Touch, Ch.0600, Intenna, Bat. Standard

Procedure Notes: Meas. Ambient Temp(celsius)-22.2; Tissue Temp(celsius)-21.5; Test Date-31/Aug/2006[OET Bulletin 65-Supplement C, July 2001]

Communication System: PCS; Frequency: 1880 MHz; Duty Cycle: 1:1

Medium parameters used: $f = 1880$ MHz; $\sigma = 1.36$ mho/m; $\epsilon_r = 39.2$; $\rho = 1000$ kg/m³

Phantom section: Left Section

DASY4 Configuration:

- Probe: ES3DV3 - SN3080; ConvF(5, 5, 5); Calibrated: 2006-05-30
- Sensor-Surface: 4mm (Mechanical Surface Detection)
- Electronics: DAE4 Sn686; Calibrated: 2006-05-05
- Phantom: SAM PHANTOM #2; Type: SAM; Serial: TP-1248
- Measurement SW: DASY4, V4.7 Build 44; Postprocessing SW: SEMCAD, V1.8 Build 171

Cheek/Touch, Ch.0600, Intenna, Bat. Standard/Area Scan (51x71x1): Measurement grid: dx=20mm, dy=20mm

Maximum value of SAR (interpolated) = 1.33 mW/g

Cheek/Touch, Ch.0600, Intenna, Bat. Standard/Zoom Scan (5x5x7)/Cube 0:

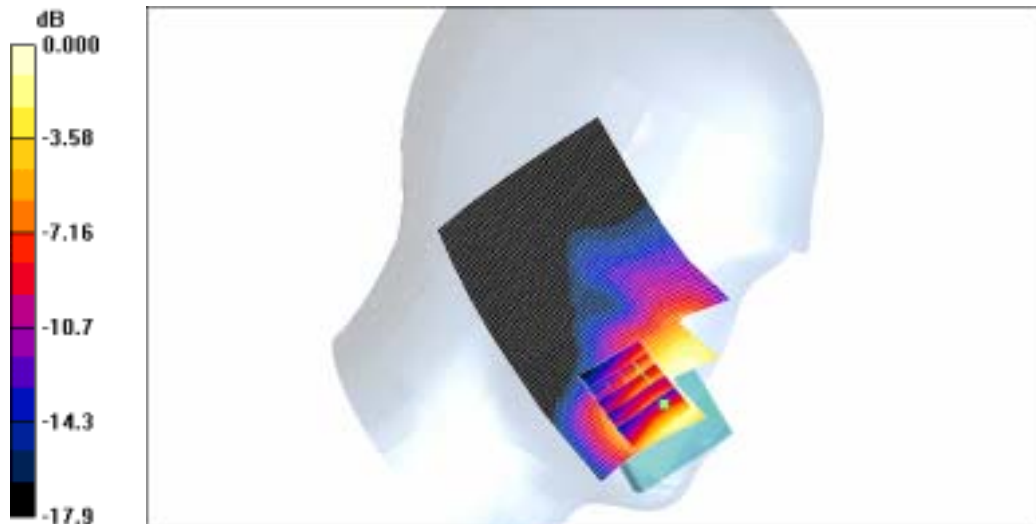
Measurement grid: dx=8mm, dy=8mm, dz=5mm

Reference Value = 4.74 V/m; Power Drift = 0.014 dB

Peak SAR (extrapolated) = 1.21 W/kg

SAR(1 g) = 0.892 mW/g

Maximum value of SAR (measured) = 0.934 mW/g



0 dB = 0.934mW/g

SAMSUNG FCC ID : A3LSPHM610 835MHz PCS Head SAR

DUT: SPH-M610; Serial: FD-160-G

Program Name: SPH-M610 PCS Left (Job No. : FD-160)

Procedure Name: Ear/Tilt, Ch.0600, Intenna, Bat. Standard 2

Procedure Notes: Meas. Ambient Temp(celsius)-22.2; Tissue Temp(celsius)-21.5; Test Date-31/Aug/2006[OET Bulletin 65-Supplement C, July 2001]

Communication System: PCS; Frequency: 1880 MHz; Duty Cycle: 1:1

Medium parameters used: $f = 1880$ MHz; $\sigma = 1.36$ mho/m; $\epsilon_r = 39.2$; $\rho = 1000$ kg/m³

Phantom section: Left Section

DASY4 Configuration:

- Probe: ES3DV3 - SN3080; ConvF(5, 5, 5); Calibrated: 2006-05-30
- Sensor-Surface: 4mm (Mechanical Surface Detection)
- Electronics: DAE4 Sn686; Calibrated: 2006-05-05
- Phantom: SAM PHANTOM #2; Type: SAM; Serial: TP-1248
- Measurement SW: DASY4, V4.7 Build 44; Postprocessing SW: SEMCAD, V1.8 Build 171

Ear/Tilt, Ch.0600, Intenna, Bat. Standard 2/Area Scan (51x71x1): Measurement grid:

$dx=20$ mm, $dy=20$ mm

Maximum value of SAR (interpolated) = 0.139 mW/g

Ear/Tilt, Ch.0600, Intenna, Bat. Standard 2/Zoom Scan (5x5x7)/Cube 0: Measurement

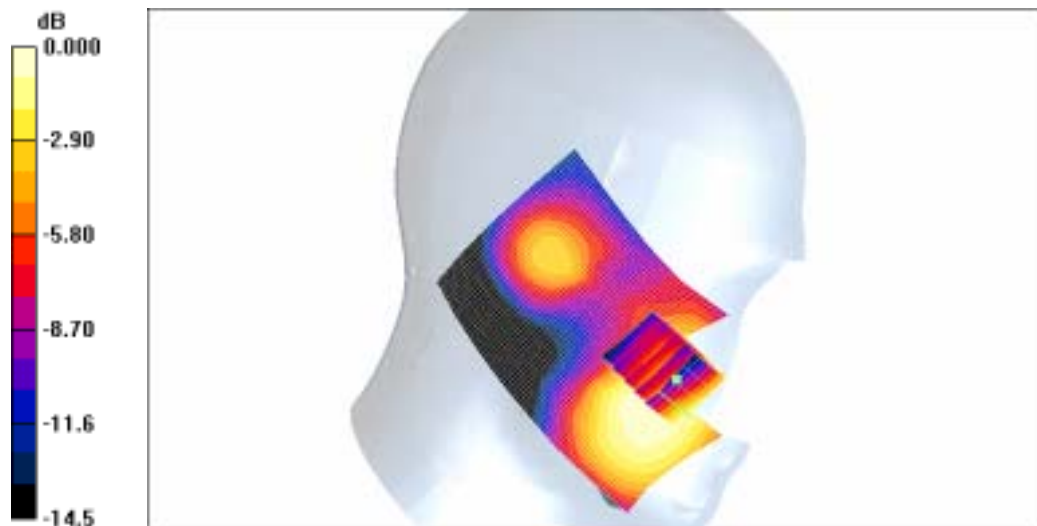
grid: $dx=8$ mm, $dy=8$ mm, $dz=5$ mm

Reference Value = 5.56 V/m; Power Drift = -0.093 dB

Peak SAR (extrapolated) = 0.195 W/kg

SAR(1 g) = 0.122 mW/g

Maximum value of SAR (measured) = 0.134 mW/g

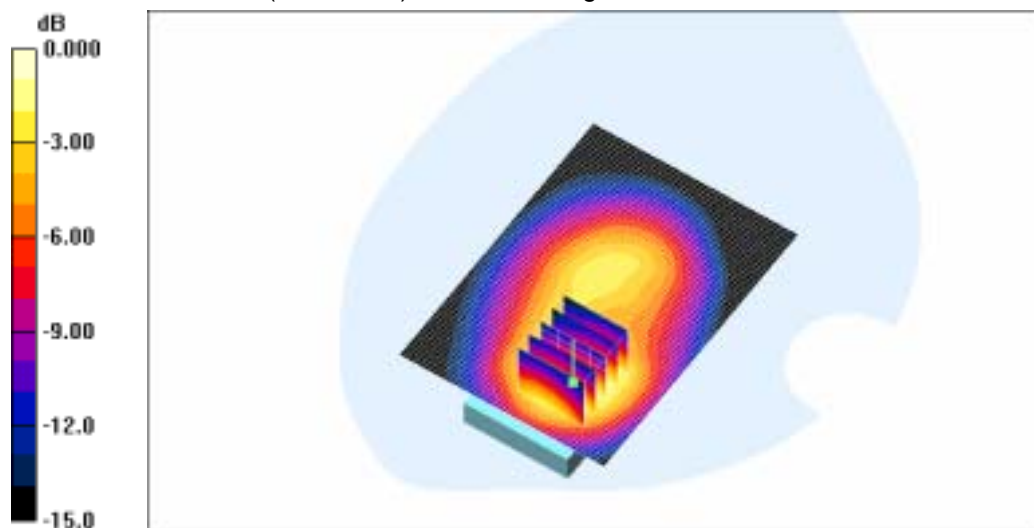


0 dB = 0.134mW/g

SAMSUNG FCC ID : A3LSPHM610 835MHz PCS Body SAR
DUT: SPH-M610(Body); Serial: FD-160-G
Program Name: SPH-M610 PCS Body (Job No. : FD-160)
Procedure Name: Body, Ch. 0600, Ant. Intenna, Bat. Standard
Procedure Notes: Meas. Ambient Temp(celsius)-21.3; Tissue Temp(celsius)-21.9;Test Date-31/Aug/2006OET Bulletin 65-Supplement C, July 2001]
Communication System: PCS; Frequency: 1880 MHz;Duty Cycle: 1:1
Medium parameters used: $f = 1880$ MHz; $\sigma = 1.53$ mho/m; $\epsilon_r = 52.7$; $\rho = 1000$ kg/m³
Phantom section: Flat Section
DASY4 Configuration:
- Probe: ES3DV3 - SN3080; ConvF(4.5, 4.5, 4.5); Calibrated: 2006-05-30
- Sensor-Surface: 4mm (Mechanical Surface Detection)
- Electronics: DAE4 Sn686; Calibrated: 2006-05-05
- Phantom: SAM PHANTOM #1; Type: SAM; Serial: TP-1247
- Measurement SW: DASY4, V4.7 Build 44; Postprocessing SW: SEMCAD, V1.8 Build 171

Body, Ch. 0600, Ant. Intenna, Bat. Standard/Area Scan (51x71x1): Measurement grid: dx=20mm, dy=20mm
Maximum value of SAR (interpolated) = 0.844 mW/g

Body, Ch. 0600, Ant. Intenna, Bat. Standard/Zoom Scan (5x5x7)/Cube 0: Measurement grid: dx=8mm, dy=8mm, dz=5mm
Reference Value = 14.5 V/m; Power Drift = 0.004 dB
Peak SAR (extrapolated) = 1.11 W/kg
SAR(1 g) = 0.731 mW/g
Maximum value of SAR (measured) = 0.768 mW/g



0 dB = 0.768mW/g

SAMSUNG FCC ID : A3LSPHM610 835MHz CDMA Head SAR

DUT: SPH-M610; Serial: FD-160-G

Program Name: SPH-M610 CDMA Right(Job No. : FD-160)

Procedure Name: Cheek/Touch, Ch.0777, Intenna, Bat. Standard

Procedure Notes: Meas. Ambient Temp(celsius)-22.1; Tissue Temp(celsius)-21.8;Test Date-01/Sep/2006[OET Bulletin 65-Supplement C, July 2001]

Communication System: CDMA; Frequency: 848.31 MHz;Duty Cycle: 1:1

Medium parameters used: $f = 848.31$ MHz; $\sigma = 0.9$ mho/m; $\epsilon_r = 41.1$; $\rho = 1000$ kg/m³

Phantom section: Right Section

DASY4 Configuration:

- Probe: ES3DV3 - SN3080; ConvF(5.69, 5.69, 5.69); Calibrated: 2006-05-30
- Sensor-Surface: 4mm (Mechanical Surface Detection)
- Electronics: DAE4 Sn686; Calibrated: 2006-05-05
- Phantom: SAM PHANTOM #1; Type: SAM; Serial: TP-1247
- Measurement SW: DASY4, V4.7 Build 44; Postprocessing SW: SEMCAD, V1.8 Build 171

Cheek/Touch, Ch.0777, Intenna, Bat. Standard/Area Scan (51x71x1): Measurement grid: dx=20mm, dy=20mm

Maximum value of SAR (interpolated) = 0.853 mW/g

Cheek/Touch, Ch.0777, Intenna, Bat. Standard/Zoom Scan (5x5x7)/Cube 0:

Measurement grid: dx=8mm, dy=8mm, dz=5mm

Reference Value = 21.5 V/m; Power Drift = 0.022 dB

Peak SAR (extrapolated) = 1.90 W/kg

SAR(1 g) = 0.938 mW/g

Maximum value of SAR (measured) = 1.10 mW/g



SAMSUNG FCC ID : A3LSPHM610 835MHz CDMA Body SAR

DUT: SPH-M610(Body); Serial: FD-160-G

Program Name: SPH-M610 CDMA Body (Job No. : FD-160)

Procedure Name: Body, Ch. 0777, Ant. Intenna, Bat. Standard

Procedure Notes: Meas.Tissue Temp(celsius)-21.8, Ambient Temp-22.0 Test Date-01/Sep/2006 [OET Bulletin 65-Supplement C, July 2001]

Communication System: CDMA; Frequency: 848.31 MHz; Duty Cycle: 1:1

Medium parameters used: $f = 848.31$ MHz; $\sigma = 0.98$ mho/m; $\epsilon_r = 53.7$; $\rho = 1000$ kg/m³

Phantom section: Flat Section

DASY4 Configuration:

- Probe: ES3DV3 - SN3080; ConvF(5.75, 5.75, 5.75); Calibrated: 2006-05-30
- Sensor-Surface: 4mm (Mechanical Surface Detection)
- Electronics: DAE4 Sn686; Calibrated: 2006-05-05
- Phantom: SAM PHANTOM #2; Type: SAM; Serial: TP-1248
- Measurement SW: DASY4, V4.7 Build 44; Postprocessing SW: SEMCAD, V1.8 Build 171

Body, Ch. 0777, Ant. Intenna, Bat. Standard/Area Scan (51x71x1): Measurement grid: dx=20mm, dy=20mm

Maximum value of SAR (interpolated) = 0.667 mW/g

Body, Ch. 0777, Ant. Intenna, Bat. Standard/Zoom Scan (5x5x7)/Cube 0: Measurement grid: dx=8mm, dy=8mm, dz=5mm

Reference Value = 7.76 V/m; Power Drift = 0.136 dB

Peak SAR (extrapolated) = 0.989 W/kg

SAR(1 g) = 0.646 mW/g

Maximum value of SAR (measured) = 0.695 mW/g



SAMSUNG FCC ID : A3LSPHM610 835MHz PCS Head SAR

DUT: SPH-M610; Serial: FD-160-G

Program Name: SPH-M610 PCS Right (Job No. : FD-160)

Procedure Name: Cheek/Touch, Ch.0600, Intenna, Bat. Standard

Procedure Notes: Meas. Ambient Temp(celsius)-22.2; Tissue Temp(celsius)-21.5; Test Date-31/Aug/2006[OET Bulletin 65-Supplement C, July 2001]

Communication System: PCS; Frequency: 1880 MHz; Duty Cycle: 1:1

Medium parameters used: $f = 1880$ MHz; $\sigma = 1.36$ mho/m; $\epsilon_r = 39.2$; $\rho = 1000$ kg/m³

Phantom section: Right Section

DASY4 Configuration:

- Probe: ES3DV3 - SN3080; ConvF(5, 5, 5); Calibrated: 2006-05-30
- Sensor-Surface: 4mm (Mechanical Surface Detection)
- Electronics: DAE4 Sn686; Calibrated: 2006-05-05
- Phantom: SAM PHANTOM #2; Type: SAM; Serial: TP-1248
- Measurement SW: DASY4, V4.7 Build 44; Postprocessing SW: SEMCAD, V1.8 Build 171

Cheek/Touch, Ch.0600, Intenna, Bat. Standard/Area Scan (51x71x1): Measurement grid: dx=20mm, dy=20mm

Maximum value of SAR (interpolated) = 1.26 mW/g

Cheek/Touch, Ch.0600, Intenna, Bat. Standard/Zoom Scan (5x5x7)/Cube 0:

Measurement grid: dx=8mm, dy=8mm, dz=5mm

Reference Value = 7.87 V/m; Power Drift = 0.139 dB

Peak SAR (extrapolated) = 1.55 W/kg

SAR(1 g) = 1.09 mW/g

Maximum value of SAR (measured) = 1.17 mW/g



SAMSUNG FCC ID : A3LSPHM610 835MHz PCS Body SAR

DUT: SPH-M610(Body); Serial: FD-160-G

Program Name: SPH-M610 PCS Body (Job No. : FD-160)

Procedure Name: Body, Ch. 0600, Ant. Intenna, Bat. Standard

Procedure Notes: Meas. Ambient Temp(celsius)-21.3; Tissue Temp(celsius)-21.9; Test Date-31/Aug/2006 OET Bulletin 65-Supplement C, July 2001]

Communication System: PCS; Frequency: 1880 MHz; Duty Cycle: 1:1

Medium parameters used: $f = 1880$ MHz; $\sigma = 1.53$ mho/m; $\epsilon_r = 52.7$; $\rho = 1000$ kg/m³

Phantom section: Flat Section

DASY4 Configuration:

- Probe: ES3DV3 - SN3080; ConvF(4.5, 4.5, 4.5); Calibrated: 2006-05-30
- Sensor-Surface: 4mm (Mechanical Surface Detection)
- Electronics: DAE4 Sn686; Calibrated: 2006-05-05
- Phantom: SAM PHANTOM #1; Type: SAM; Serial: TP-1247
- Measurement SW: DASY4, V4.7 Build 44; Postprocessing SW: SEMCAD, V1.8 Build 171

Body, Ch. 0600, Ant. Intenna, Bat. Standard/Area Scan (51x71x1): Measurement grid: dx=20mm, dy=20mm

Maximum value of SAR (interpolated) = 0.844 mW/g

Body, Ch. 0600, Ant. Intenna, Bat. Standard/Zoom Scan (5x5x7)/Cube 0: Measurement grid: dx=8mm, dy=8mm, dz=5mm

Reference Value = 14.5 V/m; Power Drift = 0.004 dB

Peak SAR (extrapolated) = 1.11 W/kg

SAR(1 g) = 0.731 mW/g

Maximum value of SAR (measured) = 0.768 mW/g

