

LTE Band V

Frequency: 836.5 MHz; Duty Cycle: 1:1; Room Ambient Temperature: 23.0°C; Liquid Temperature: 22.0°C
 Medium parameters used (interpolated): $f = 836.5$ MHz; $\sigma = 0.899$ S/m; $\epsilon_r = 40.431$; $\rho = 1000$ kg/m³

DASY5 Configuration:

- Area Scan Setting: Find Secondary Maximum Within: 2.0 dB and with a peak SAR value greater than 0.0012W/kg
- Electronics: DAE4 Sn1468; Calibrated: 2016-09-08
- Probe: EX3DV4 - SN7330; ConvF(9.93, 9.93, 9.93); Calibrated: 2016-02-24;
- Sensor-Surface: 2.5mm (Mechanical Surface Detection)
- Phantom: SAM (20deg probe tilt) with CRP v5.0(Right); Type: QD000P40CD; Serial: TP:1846

RHS/Touch_QPSK RB 1/49 ch20525/Area Scan (7x11x1): Measurement grid: dx=15mm, dy=15mm
 Maximum value of SAR (measured) = 0.317 W/kg

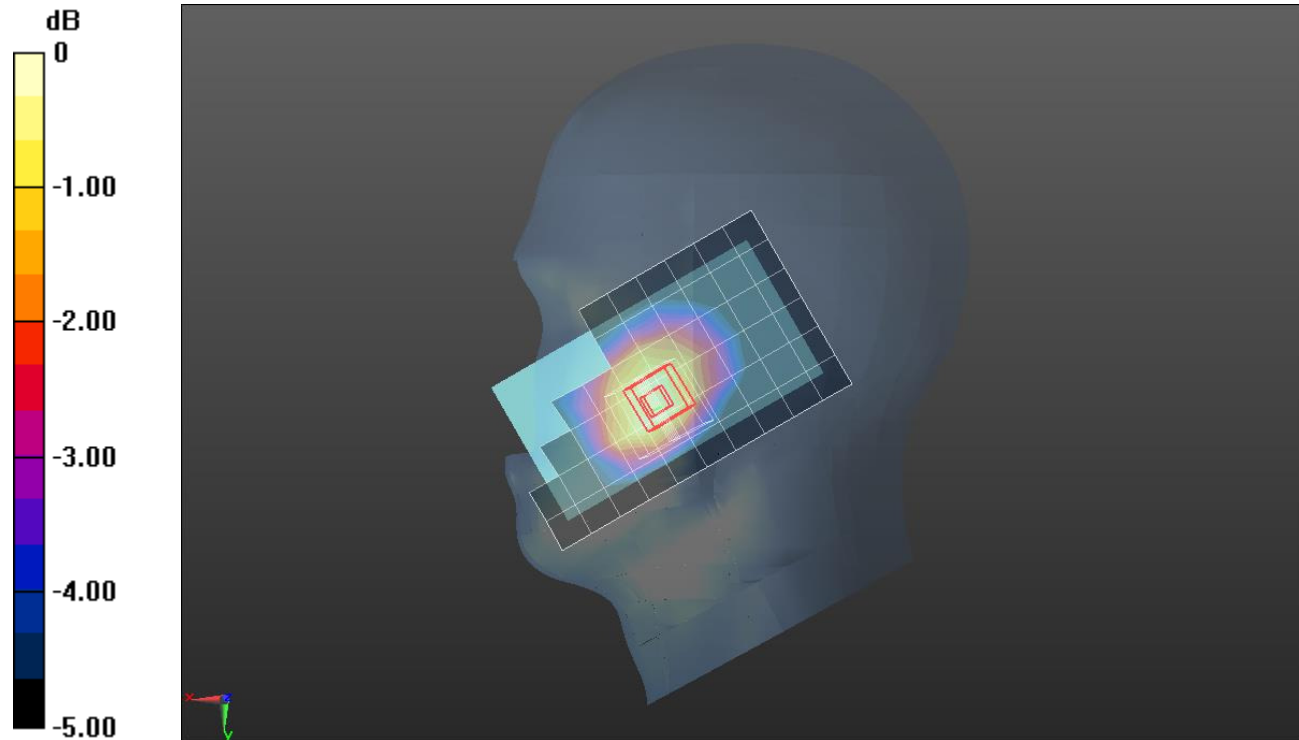
RHS/Touch_QPSK RB 1/49 ch20525/Zoom Scan (5x5x7)/Cube 0: Measurement grid: dx=8mm, dy=8mm, dz=5mm

Reference Value = 18.96 V/m; Power Drift = 0.04 dB

Peak SAR (extrapolated) = 0.369 W/kg

SAR(1 g) = 0.301 W/kg; SAR(10 g) = 0.229 W/kg

Maximum value of SAR (measured) = 0.332 W/kg



0 dB = 0.332 W/kg = -4.79 dBW/kg

LTE Band V

Frequency: 836.5 MHz; Duty Cycle: 1:1; Room Ambient Temperature: 23.0°C; Liquid Temperature: 22.0°C
 Medium parameters used (interpolated): $f = 836.5$ MHz; $\sigma = 0.989$ S/m; $\epsilon_r = 53.411$; $\rho = 1000$ kg/m³

DASY5 Configuration:

- Area Scan Setting: Find Secondary Maximum Within: 2.0 dB and with a peak SAR value greater than 0.0012W/kg
- Electronics: DAE4 Sn1447; Calibrated: 2016-09-19
- Probe: EX3DV4 - SN7376; ConvF(10.12, 10.12, 10.12); Calibrated: 2016-08-30;
- Sensor-Surface: 2.5mm (Mechanical Surface Detection)
- Phantom: Triple Flat Phantom 5.1C; Type: QD 000 P51 CA; Serial: 1170

Rear/QPSK RB 1/49 ch20525/Area Scan (7x12x1): Measurement grid: dx=15mm, dy=15mm

Maximum value of SAR (measured) = 0.514 W/kg

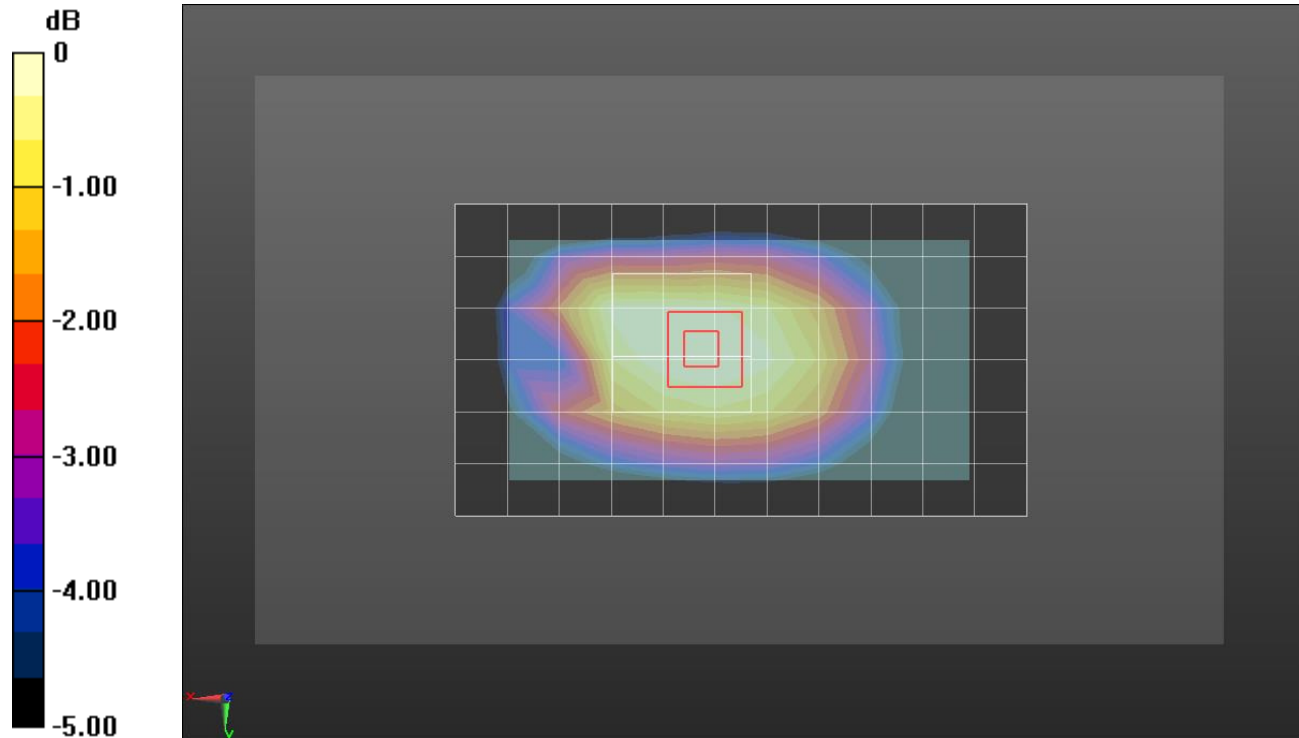
Rear/QPSK RB 1/49 ch20525/Zoom Scan (6x6x7)/Cube 0: Measurement grid: dx=8mm, dy=8mm, dz=5mm

Reference Value = 22.80 V/m; Power Drift = -0.00 dB

Peak SAR (extrapolated) = 0.576 W/kg

SAR(1 g) = 0.454 W/kg; SAR(10 g) = 0.342 W/kg

Maximum value of SAR (measured) = 0.506 W/kg



0 dB = 0.506 W/kg = -2.96 dBW/kg

Wi-Fi 2.4 GHz

Frequency: 2437 MHz; Duty Cycle: 1:1; Room Ambient Temperature: 23.0°C; Liquid Temperature: 22.0°C
 Medium parameters used (interpolated): $f = 2437$ MHz; $\sigma = 1.997$ S/m; $\epsilon_r = 53.064$; $\rho = 1000$ kg/m³

DASY5 Configuration:

- Area Scan Setting: Find Secondary Maximum Within: 2.0 dB and with a peak SAR value greater than 0.0012W/kg
- Electronics: DAE4 Sn1447; Calibrated: 2016-09-19
- Probe: EX3DV4 - SN7376; ConvF(7.62, 7.62, 7.62); Calibrated: 2016-08-30;
- Sensor-Surface: 2.5mm (Mechanical Surface Detection)
- Phantom: ELI V6.0 (20deg); Type: QD OVA 003 AA; Serial: 2013

Front/802.11b_ch 6/Area Scan (9x15x1): Measurement grid: dx=12mm, dy=12mm

Maximum value of SAR (measured) = 0.209 W/kg

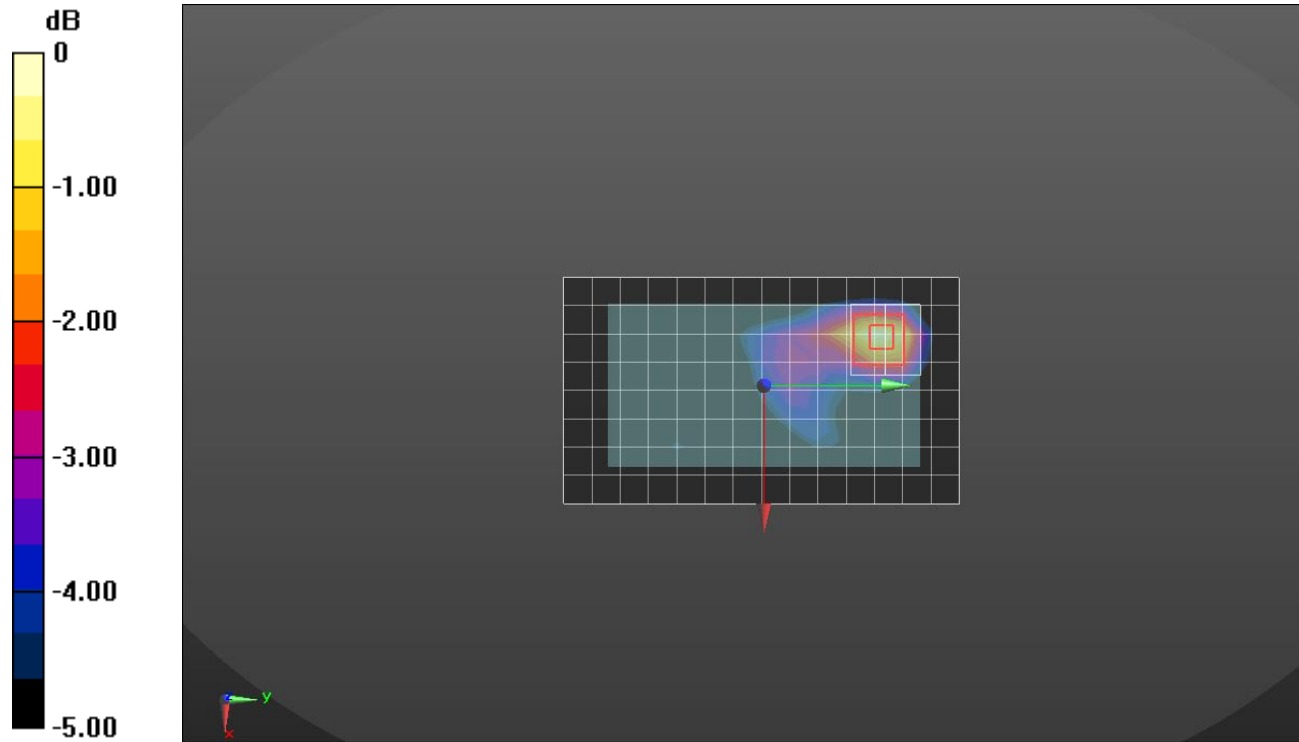
Front/802.11b_ch 6/Zoom Scan (7x7x7)/Cube 0: Measurement grid: dx=5mm, dy=5mm, dz=5mm

Reference Value = 10.21 V/m; Power Drift = -0.07 dB

Peak SAR (extrapolated) = 0.306 W/kg

SAR(1 g) = 0.157 W/kg; SAR(10 g) = 0.081 W/kg

Maximum value of SAR (measured) = 0.213 W/kg



0 dB = 0.213 W/kg = -6.72 dBW/kg

Wi-Fi 2.4 GHz

Frequency: 2437 MHz; Duty Cycle: 1:1; Room Ambient Temperature: 23.0°C; Liquid Temperature: 22.0°C
 Medium parameters used (interpolated): $f = 2437$ MHz; $\sigma = 1.833$ S/m; $\epsilon_r = 38.715$; $\rho = 1000$ kg/m³

DASY5 Configuration:

- Area Scan Setting: Find Secondary Maximum Within: 2.0 dB and with a peak SAR value greater than 0.0012W/kg
- Electronics: DAE4 Sn1447; Calibrated: 2016-09-19
- Probe: EX3DV4 - SN7376; ConvF(7.49, 7.49, 7.49); Calibrated: 2016-08-30;
- Sensor-Surface: 2.5mm (Mechanical Surface Detection)
- Phantom: SAM (20deg probe tilt) with CRP v5.0_Front; Type: QD000P40CD; Serial: TP:1877

RHS/Touch_802.11b_ch 6/Area Scan (9x14x1): Measurement grid: dx=12mm, dy=12mm

Maximum value of SAR (measured) = 0.845 W/kg

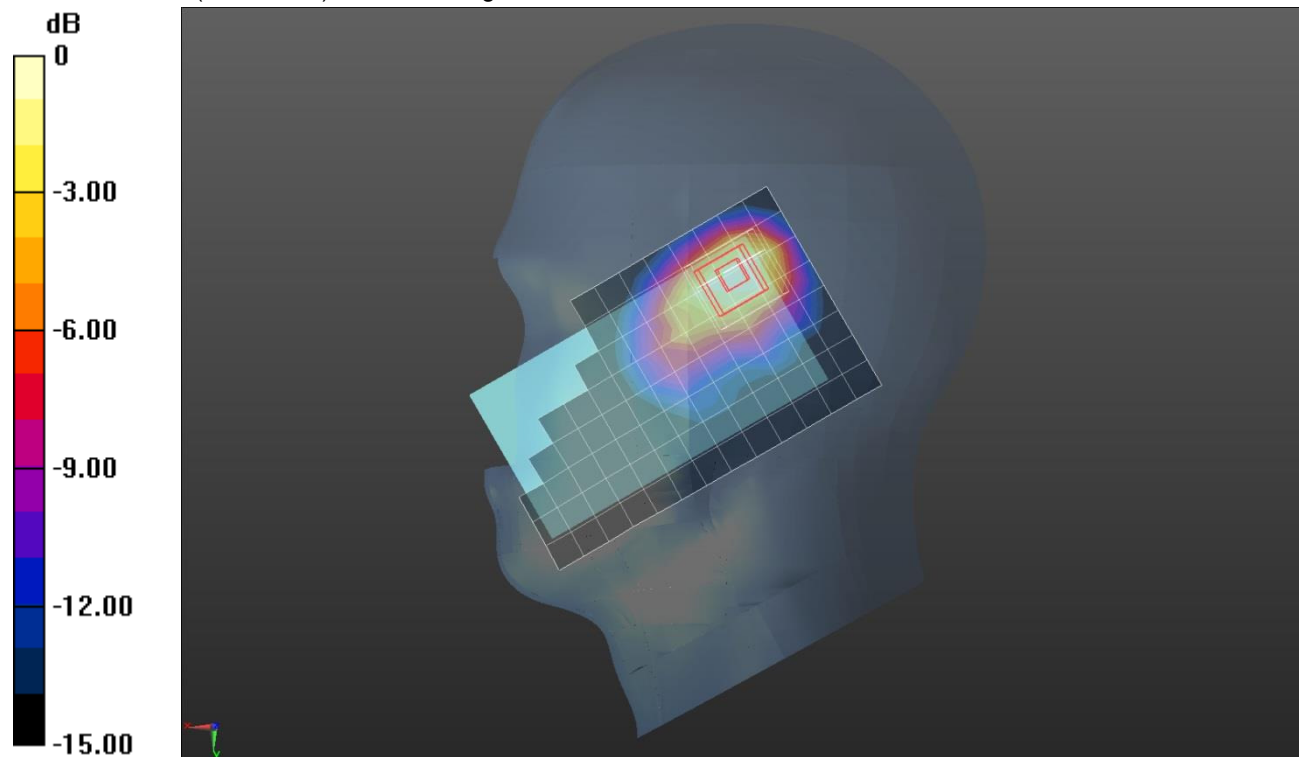
RHS/Touch_802.11b_ch 6/Zoom Scan (7x7x7)/Cube 0: Measurement grid: dx=5mm, dy=5mm, dz=5mm

Reference Value = 21.67 V/m; Power Drift = -0.06 dB

Peak SAR (extrapolated) = 1.42 W/kg

SAR(1 g) = 0.633 W/kg; SAR(10 g) = 0.329 W/kg

Maximum value of SAR (measured) = 0.852 W/kg



0 dB = 0.852 W/kg = -0.70 dBW/kg