

## LTE Band 5

Frequency: 836.5 MHz; Duty Cycle: 1:1; Room Ambient Temperature: 23.0°C; Liquid Temperature: 22.0°C  
 Medium parameters used (interpolated):  $f = 836.5$  MHz;  $\sigma = 0.899$  S/m;  $\epsilon_r = 40.431$ ;  $\rho = 1000$  kg/m<sup>3</sup>

DASY5 Configuration:

- Area Scan Setting: Find Secondary Maximum Within: 2.0 dB and with a peak SAR value greater than 0.0012W/kg
- Electronics: DAE4 Sn1468; Calibrated: 2016-09-08
- Probe: EX3DV4 - SN7330; ConvF(9.93, 9.93, 9.93); Calibrated: 2016-02-24;
- Sensor-Surface: 2.5mm (Mechanical Surface Detection)
- Phantom: SAM (20deg probe tilt) with CRP v5.0(Right); Type: QD000P40CD; Serial: TP:1846

**RHS/Touch\_QPSK RB 1/49 ch20525/Area Scan (7x11x1):** Measurement grid: dx=15mm, dy=15mm  
 Maximum value of SAR (measured) = 0.317 W/kg

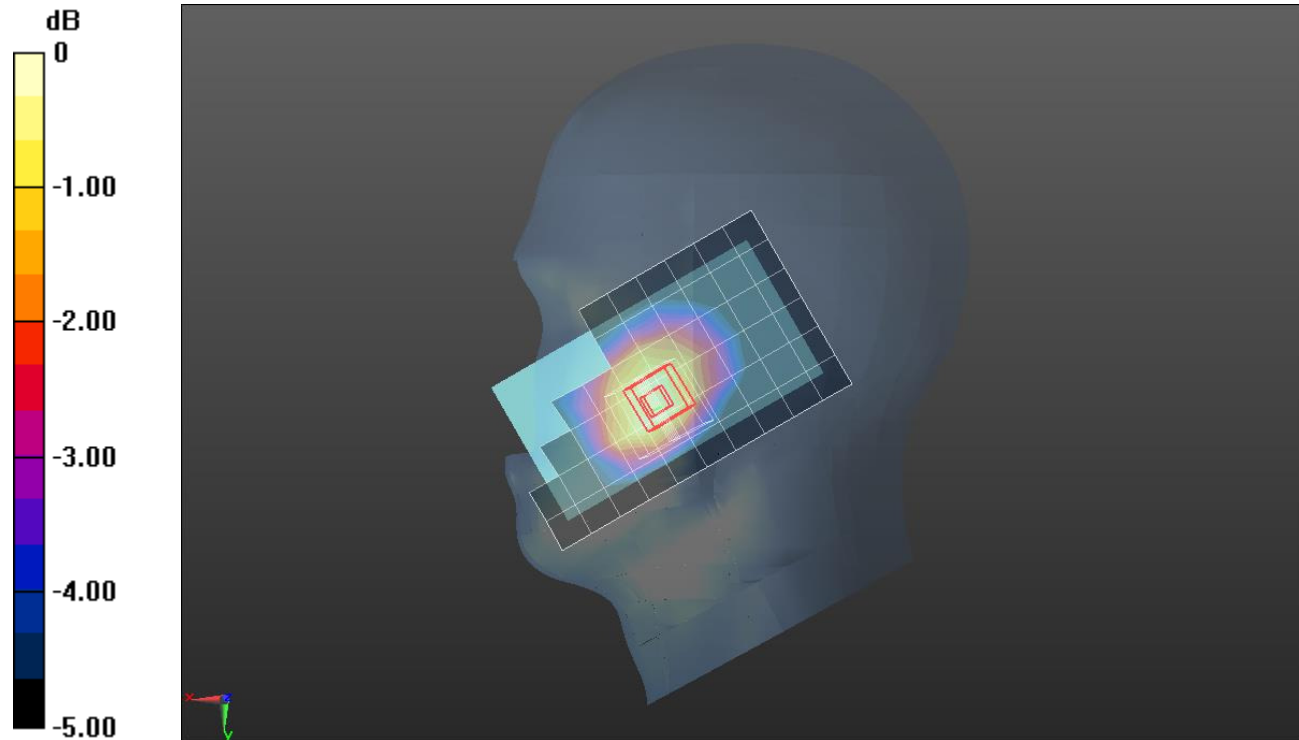
**RHS/Touch\_QPSK RB 1/49 ch20525/Zoom Scan (5x5x7)/Cube 0:** Measurement grid: dx=8mm, dy=8mm, dz=5mm

Reference Value = 18.96 V/m; Power Drift = 0.04 dB

Peak SAR (extrapolated) = 0.369 W/kg

**SAR(1 g) = 0.301 W/kg; SAR(10 g) = 0.229 W/kg**

Maximum value of SAR (measured) = 0.332 W/kg



0 dB = 0.332 W/kg = -4.79 dBW/kg

## LTE Band 5

Frequency: 836.5 MHz; Duty Cycle: 1:1; Room Ambient Temperature: 23.0°C; Liquid Temperature: 22.0°C  
 Medium parameters used (interpolated):  $f = 836.5$  MHz;  $\sigma = 0.989$  S/m;  $\epsilon_r = 53.411$ ;  $\rho = 1000$  kg/m<sup>3</sup>

DASY5 Configuration:

- Area Scan Setting: Find Secondary Maximum Within: 2.0 dB and with a peak SAR value greater than 0.0012W/kg
- Electronics: DAE4 Sn1447; Calibrated: 2016-09-19
- Probe: EX3DV4 - SN7376; ConvF(10.12, 10.12, 10.12); Calibrated: 2016-08-30;
- Sensor-Surface: 2.5mm (Mechanical Surface Detection)
- Phantom: Triple Flat Phantom 5.1C; Type: QD 000 P51 CA; Serial: 1170

**Rear/QPSK RB 1/49 ch20525/Area Scan (7x12x1):** Measurement grid: dx=15mm, dy=15mm

Maximum value of SAR (measured) = 0.514 W/kg

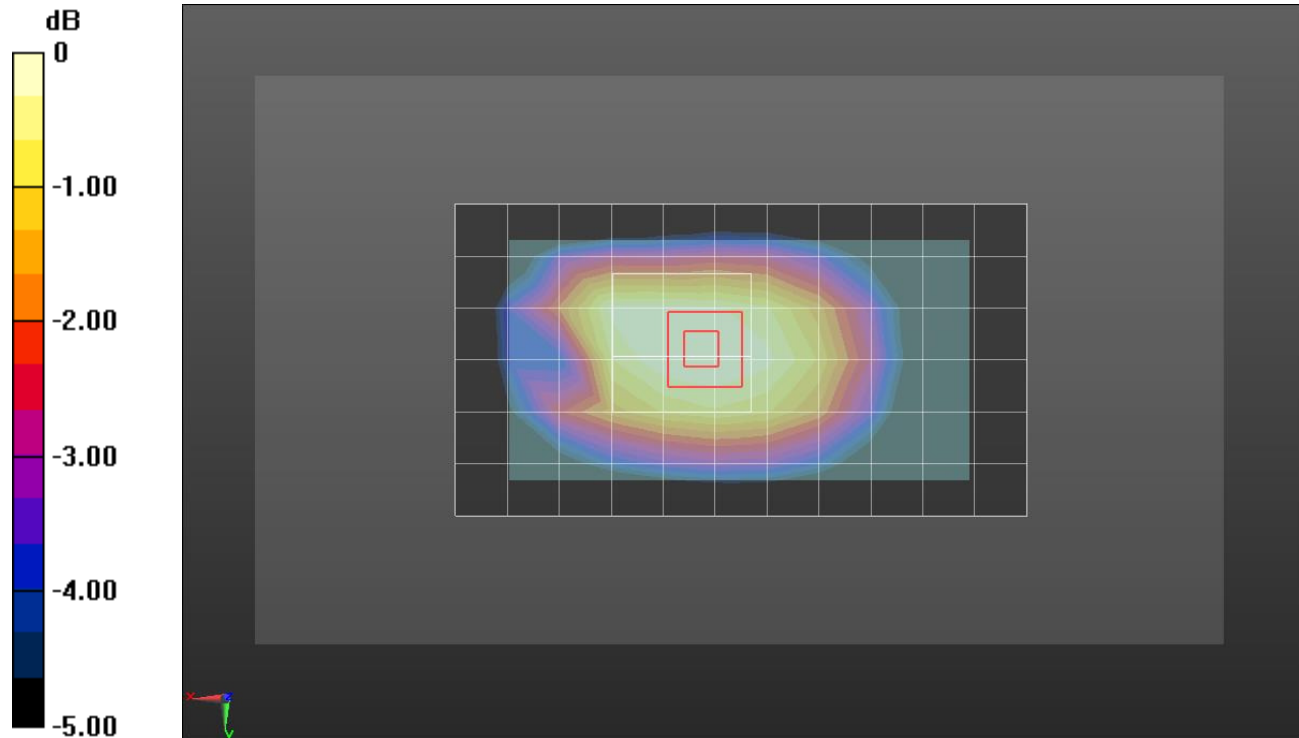
**Rear/QPSK RB 1/49 ch20525/Zoom Scan (6x6x7)/Cube 0:** Measurement grid: dx=8mm, dy=8mm, dz=5mm

Reference Value = 22.80 V/m; Power Drift = -0.00 dB

Peak SAR (extrapolated) = 0.576 W/kg

**SAR(1 g) = 0.454 W/kg; SAR(10 g) = 0.342 W/kg**

Maximum value of SAR (measured) = 0.506 W/kg



0 dB = 0.506 W/kg = -2.96 dBW/kg

## Wi-Fi 2.4GHz

Frequency: 2437 MHz; Duty Cycle: 1:1; Room Ambient Temperature: 23.0°C; Liquid Temperature: 22.0°C  
 Medium parameters used (interpolated):  $f = 2437$  MHz;  $\sigma = 1.782$  S/m;  $\epsilon_r = 39.619$ ;  $\rho = 1000$  kg/m<sup>3</sup>

DASY5 Configuration:

- Area Scan Setting: Find Secondary Maximum Within: 2.0 dB and with a peak SAR value greater than 0.0012W/kg
- Electronics: DAE4 Sn1447; Calibrated: 2016-09-19
- Probe: EX3DV4 - SN7376; ConvF(7.49, 7.49, 7.49); Calibrated: 2016-08-30;
- Sensor-Surface: 2.5mm (Mechanical Surface Detection)
- Phantom: SAM (20deg probe tilt) with CRP v5.0\_Front; Type: QD000P40CD; Serial: TP:1877

**RHS/Touch\_802.11b\_ch 6/Area Scan (9x14x1):** Measurement grid: dx=12mm, dy=12mm

Maximum value of SAR (measured) = 0.689 W/kg

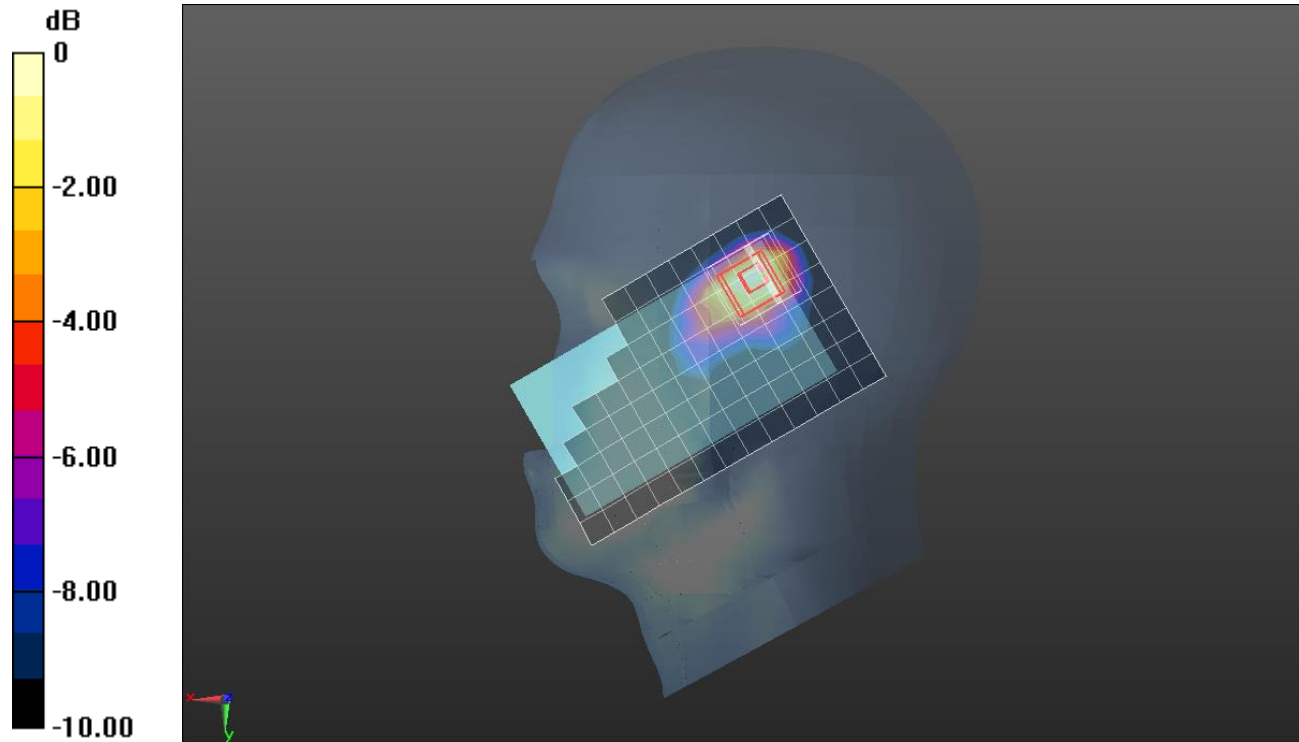
**RHS/Touch\_802.11b\_ch 6/Zoom Scan (7x7x7)/Cube 0:** Measurement grid: dx=5mm, dy=5mm, dz=5mm

Reference Value = 19.71 V/m; Power Drift = 0.10 dB

Peak SAR (extrapolated) = 1.18 W/kg

**SAR(1 g) = 0.531 W/kg; SAR(10 g) = 0.272 W/kg**

Maximum value of SAR (measured) = 0.725 W/kg



0 dB = 0.725 W/kg = -1.40 dBW/kg

## Wi-Fi 2.4GHz

Frequency: 2437 MHz; Duty Cycle: 1:1; Room Ambient Temperature: 23.0°C; Liquid Temperature: 22.0°C  
 Medium parameters used (interpolated):  $f = 2437$  MHz;  $\sigma = 1.997$  S/m;  $\epsilon_r = 53.064$ ;  $\rho = 1000$  kg/m<sup>3</sup>

DASY5 Configuration:

- Area Scan Setting: Find Secondary Maximum Within: 2.0 dB and with a peak SAR value greater than 0.0012W/kg
- Electronics: DAE4 Sn1447; Calibrated: 2016-09-19
- Probe: EX3DV4 - SN7376; ConvF(7.62, 7.62, 7.62); Calibrated: 2016-08-30;
- Sensor-Surface: 2.5mm (Mechanical Surface Detection)
- Phantom: ELI V6.0 (20deg); Type: QD OVA 003 AA; Serial: 2013

**Front/802.11b\_ch 6/Area Scan (9x15x1):** Measurement grid: dx=12mm, dy=12mm

Maximum value of SAR (measured) = 0.209 W/kg

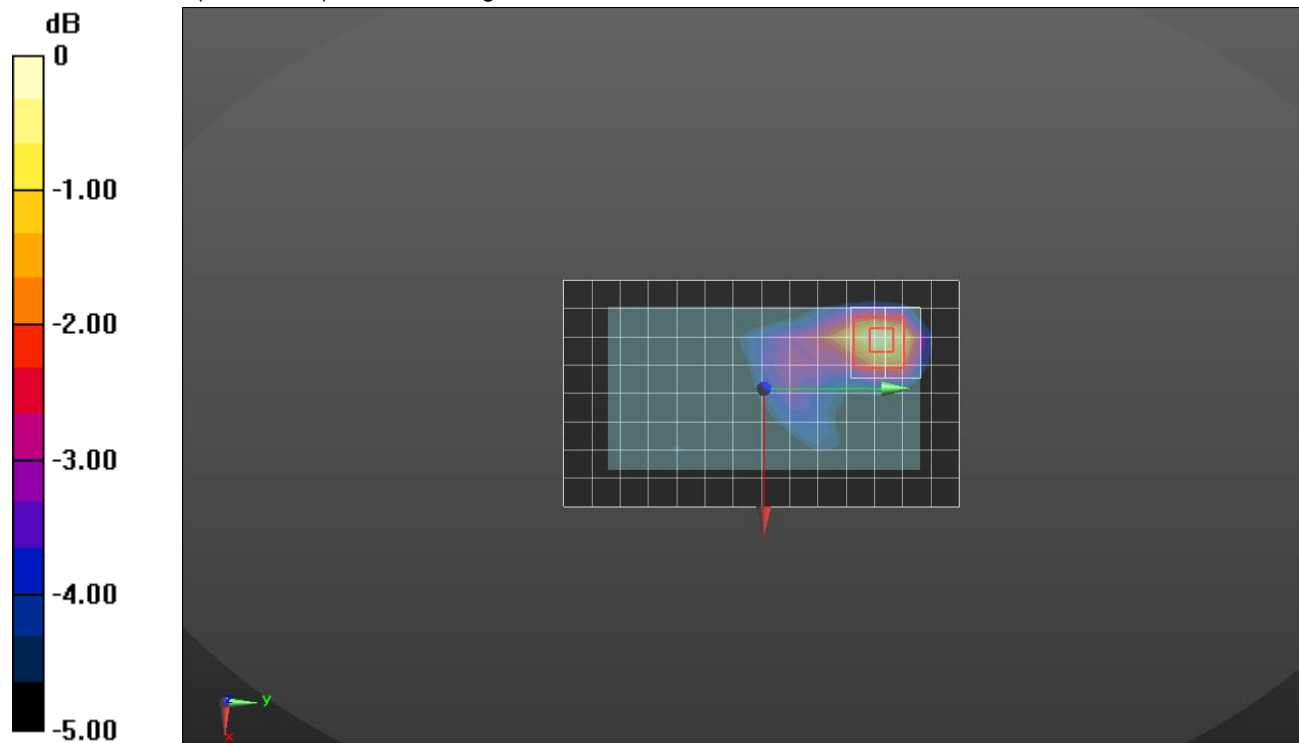
**Front/802.11b\_ch 6/Zoom Scan (7x7x7)/Cube 0:** Measurement grid: dx=5mm, dy=5mm, dz=5mm

Reference Value = 10.21 V/m; Power Drift = -0.07 dB

Peak SAR (extrapolated) = 0.306 W/kg

**SAR(1 g) = 0.157 W/kg; SAR(10 g) = 0.081 W/kg**

Maximum value of SAR (measured) = 0.213 W/kg



0 dB = 0.213 W/kg = -6.72 dBW/kg