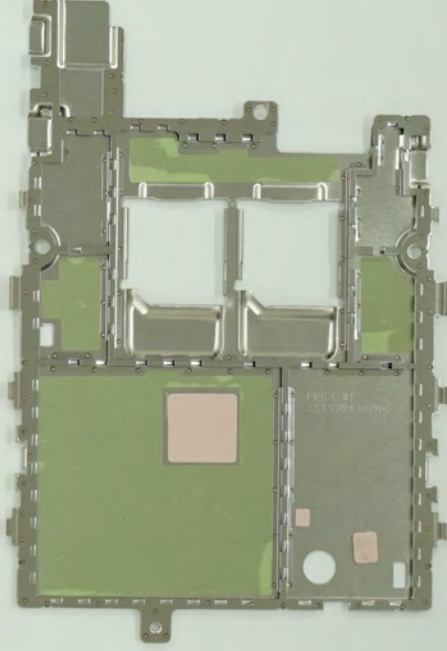
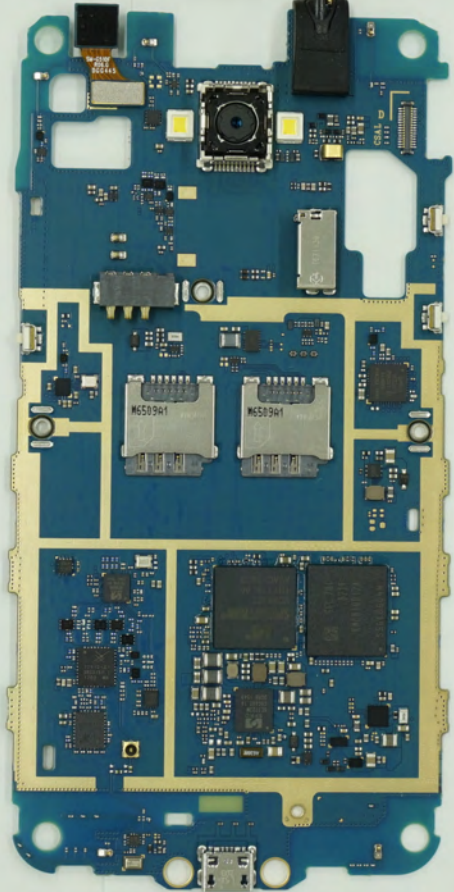
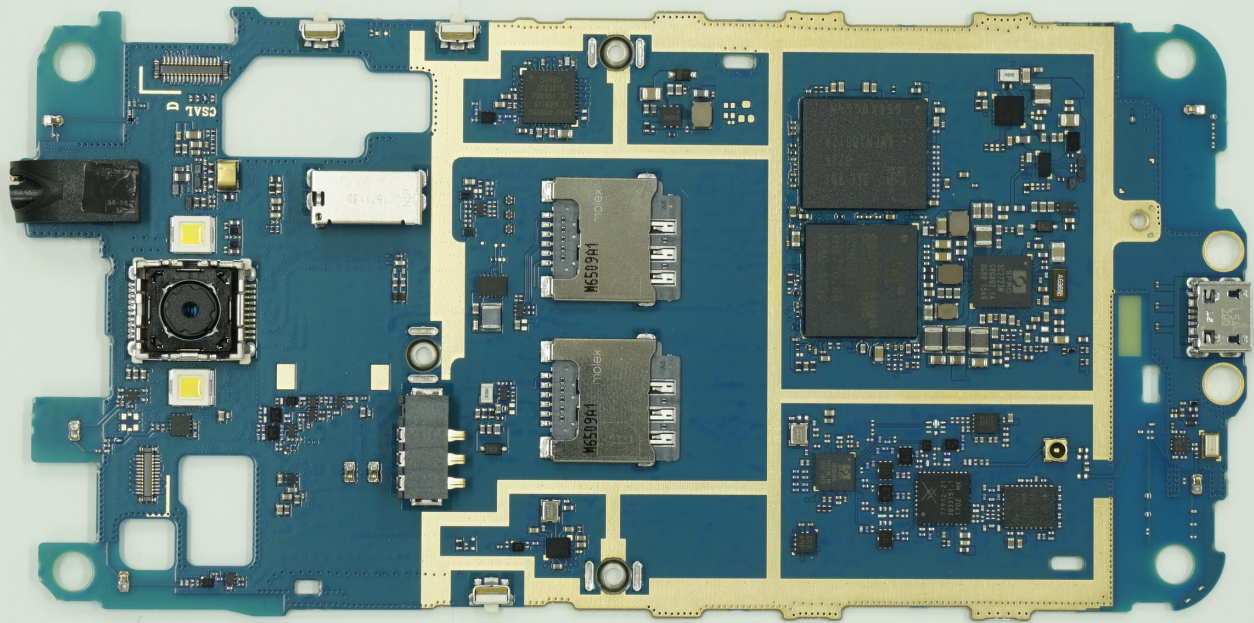


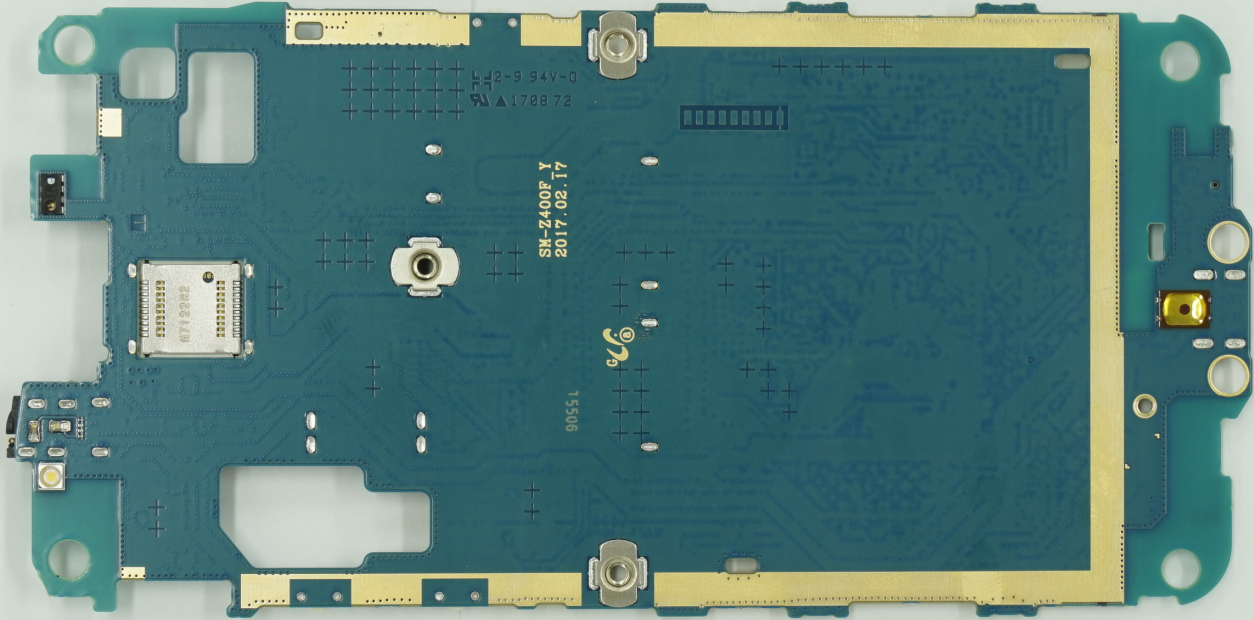
17 02 28 SM-7400F-SWA
Rev0 3(8G/8G) PV
Z400F00131

MOBILE PHONE
MODEL: SM-7400FDS
FCC ID: A3L8A2400F
S/N: -2400F0309MH
RATED: 3.8V/1.700mAh
DESIGNED & ENGINEERED BY SAMSUNG
MANUFACTURED IN KOREA

IMEI: 355235080106431
IMEI: 355236080106439
S/N: R99J205QKZV







42-9 94V-0
1708 72

SM-2400F Y
2017.02.17

T3506



8712002