

Appendix I. SPLSR criteria plots

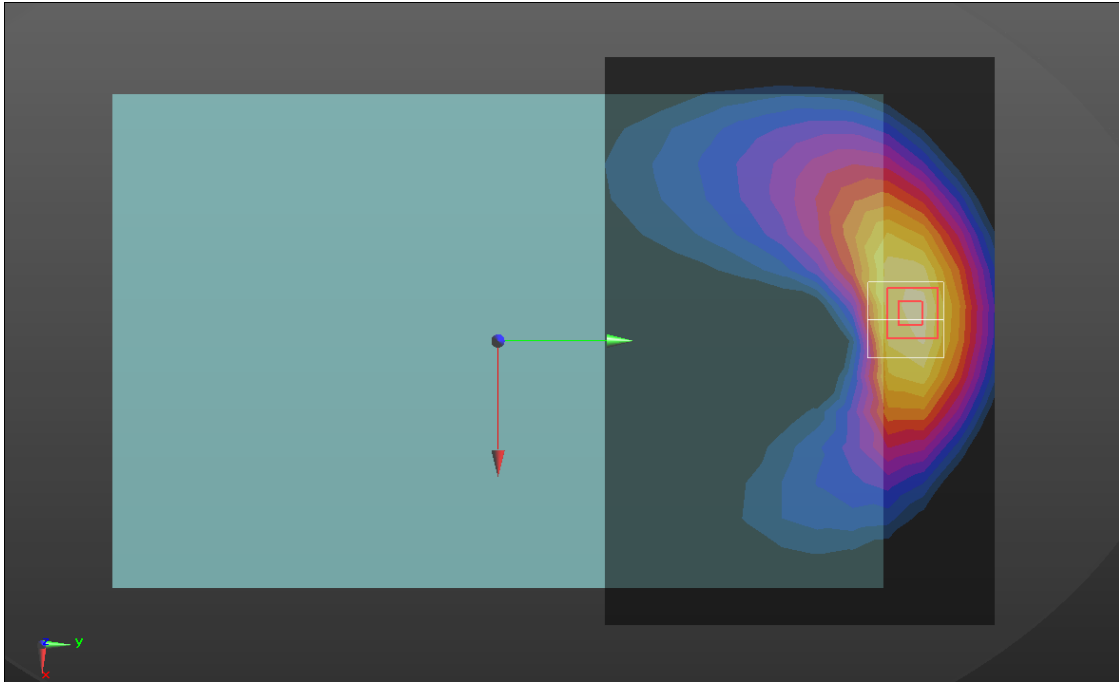
Peak SAR location of each band of each antenna.

Main bands				
Antenna	Technologies Supported	X-axis location (mm)	Y-axis location (mm)	Plot No.
Main Ant.1	GSM 850	-0.0090	0.1730	1
Main Ant.1	GSM 1900	-0.0300	0.1600	2
Main Ant.1	WCDMA Band II	-0.0285	0.1590	3
Main Ant.1	WCDMA Band IV	-0.0285	0.1600	4
Main Ant.1	WCDMA Band V	-0.0030	0.1690	5
Main Ant.1	LTE Band 12	-0.0040	0.1650	6
Main Ant.1	LTE Band 13	-0.0045	0.1680	7
Main Ant.1	LTE Band 25	-0.0315	0.1590	8
Main Ant.1	LTE Band 26	-0.0015	0.1710	9
Main Ant.1	LTE Band 41	-0.0336	0.1630	10
Main Ant.1	LTE Band 66	-0.0255	0.1600	11
Main Ant.1	NR Band n5	-0.0090	0.1710	12
Main Ant.1	NR Band n66	-0.0315	0.1620	13
Main Ant.2	LTE Band 2	0.0295	-0.1620	14
WiF/BT bands				
Antenna	Technologies Supported	X-axis location (mm)	Y-axis location (mm)	Plot No.
BT Ant.1	Bluetooth	-0.1010	0.1610	15
BT Ant.2	Bluetooth	0.1010	0.1600	16
WiFi Ant.1	DTS (Non RSDB)	-0.0984	0.1550	17
WiFi Ant.2	DTS (Non RSDB)	0.0972	0.1600	18
WiFi MIMO	DTS (Non RSDB)	-0.0998	0.1560	19
WiFi MIMO	UNII (below 6GHz) (Non RSDB)	0.1040	0.1570	20
WiFi MIMO	UNII (above 6GHz) (Non RSDB)	0.0996	0.1566	21
WiFi Ant.1	DTS (RSDB)	-0.0972	0.1550	22
WiFi Ant.2	DTS (RSDB)	0.0996	0.1500	23
WiFi MIMO	DTS (RSDB)	-0.0998	0.1560	24
WiFi MIMO	UNII (below 6GHz) (Non RSDB)	0.1040	0.1570	25
WiFi MIMO	UNII (above 6GHz) (Non RSDB)	0.0990	0.1570	26

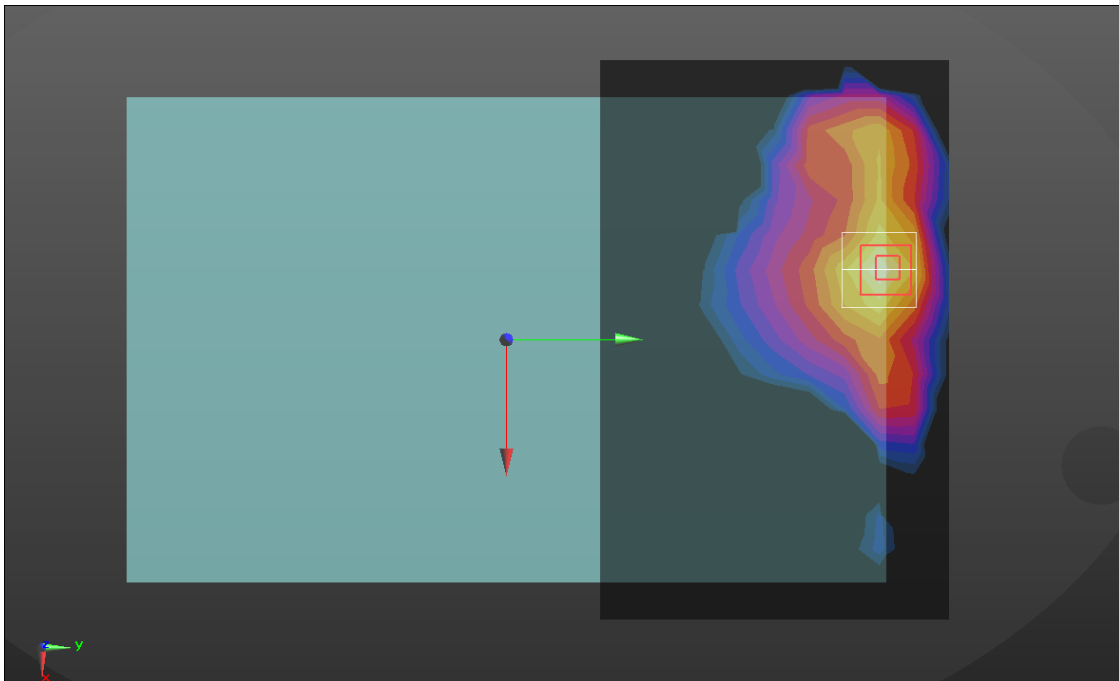
Peak SAR location of combine bands

Position	Main & WiFi/BT Combine bands						Plot No.
	Tech.1		Tech.2		Peak location		
	Antenna	Technologies Supported	Antenna	Technologies Supported	X-axis location (mm)	Y-axis location (mm)	
Rear	Main Ant.1	GSM 850	BT Ant.1	Bluetooth	-0.0080	0.1760	
Rear	Main Ant.1	GSM 850	DTS Ant.1	DTS (RSDB)	-0.0080	0.1760	27
Rear	Main Ant.1	GSM 850	DTS MIMO	DTS (RSDB)	-0.0080	0.1760	
Rear	Main Ant.1	GSM 1900	BT Ant.1	Bluetooth	-0.0040	0.1680	
Rear	Main Ant.1	WCDMA Band II	BT Ant.1	Bluetooth	-0.0360	0.1640	
Rear	Main Ant.1	WCDMA Band II	DTS MIMO	DTS (RSDB)	-0.0360	0.1640	
Rear	Main Ant.1	WCDMA Band IV	BT Ant.1	Bluetooth	-0.0360	0.1640	28
Rear	Main Ant.1	WCDMA Band IV	DTS MIMO	DTS (RSDB)	-0.0360	0.1640	
Rear	Main Ant.1	WCDMA Band V	BT Ant.1	Bluetooth	-0.0040	0.1640	
Rear	Main Ant.1	WCDMA Band V	DTS Ant.1	DTS (RSDB)	-0.0040	0.1640	
Rear	Main Ant.1	WCDMA Band V	DTS MIMO	DTS (RSDB)	-0.0040	0.1640	
Rear	Main Ant.1	LTE Band 12	BT Ant.1	Bluetooth	0.0040	0.1680	
Rear	Main Ant.1	LTE Band 12	DTS Ant.1	DTS (RSDB)	0.0040	0.1680	
Rear	Main Ant.1	LTE Band 12	DTS MIMO	DTS (RSDB)	0.0040	0.1680	29
Rear	Main Ant.1	LTE Band 13	BT Ant.1	Bluetooth	-0.0080	0.1720	
Rear	Main Ant.1	LTE Band 13	DTS Ant.1	DTS (RSDB)	-0.0080	0.1720	
Rear	Main Ant.1	LTE Band 13	DTS MIMO	DTS (RSDB)	-0.0080	0.1720	
Rear	Main Ant.1	LTE Band 25	BT Ant.1	Bluetooth	-0.0360	0.1600	
Rear	Main Ant.1	LTE Band 25	DTS MIMO	DTS (RSDB)	-0.0360	0.1600	30
Rear	Main Ant.1	LTE Band 26	BT Ant.1	Bluetooth	0.0000	0.1680	
Rear	Main Ant.1	LTE Band 26	DTS Ant.1	DTS (RSDB)	0.0000	0.1680	31
Rear	Main Ant.1	LTE Band 26	DTS MIMO	DTS (RSDB)	-0.0040	0.1680	
Rear	Main Ant.1	LTE Band 41	BT Ant.1	Bluetooth	-0.0320	0.1640	
Rear	Main Ant.1	LTE Band 41	DTS Ant.1	DTS (RSDB)	-0.0320	0.1640	
Rear	Main Ant.1	LTE Band 41	DTS MIMO	DTS (RSDB)	-0.0320	0.1640	32
Rear	Main Ant.1	LTE Band 66	BT Ant.1	Bluetooth	-0.0360	0.1640	
Rear	Main Ant.1	LTE Band 66	DTS MIMO	DTS (RSDB)	-0.0360	0.1640	
Rear	Main Ant.1	NR Band n5	BT Ant.1	Bluetooth	0.0000	0.1640	
Rear	Main Ant.1	NR Band n5	DTS Ant.1	DTS (RSDB)	0.0000	0.1640	33
Rear	Main Ant.1	NR Band n5	DTS MIMO	DTS (RSDB)	-0.0040	0.1640	
Rear	Main Ant.1	NR Band n66	BT Ant.1	Bluetooth	-0.0320	0.1640	34
Rear	Main Ant.1	NR Band n66	DTS MIMO	DTS (RSDB)	-0.0320	0.1640	
Rear-19mm	Main Ant.1	LTE Band 25(2)	Main Ant.1	NR Band n5	-0.0150	0.1650	35
Rear-0mm	Main Ant.1	LTE Band 25(2)	Main Ant.1	NR Band n5	-0.0300	0.1600	
Rear-19mm	Main Ant.1	LTE Band 66	Main Ant.1	NR Band n5	-0.0200	0.1650	
Rear-0mm	Main Ant.1	LTE Band 66	Main Ant.1	NR Band n5	-0.0300	0.1650	36
Rear-19mm	Main Ant.1	LTE Band 26(5)	Main Ant.1	NR Band n66	-0.0200	0.1650	37
Rear-0mm	Main Ant.1	LTE Band 26(5)	Main Ant.1	NR Band n66	-0.0300	0.1600	
Rear-19mm	Main Ant.1	LTE Band 12	Main Ant.1	NR Band n66	-0.0200	0.1650	38
Rear-0mm	Main Ant.1	LTE Band 12	Main Ant.1	NR Band n66	-0.0300	0.1600	39
Rear-19mm	Main Ant.1	LTE Band 13	Main Ant.1	NR Band n66	-0.0200	0.1650	40
Rear-0mm	Main Ant.1	LTE Band 13	Main Ant.1	NR Band n66	-0.0300	0.1600	
Rear	WiFi MIMO	UNII (<6GHz) (Non RSDB)	BT Ant.2	Bluetooth	0.0960	0.1560	41
Rear	WiFi MIMO	UNII (<6GHz) (RSDB)	DTS Ant.2	DTS (RSDB)	0.1040	0.1560	42
Rear	WiFi MIMO	UNII (>6GHz) (Non RSDB)	BT Ant.2	Bluetooth	0.0990	0.1544	43
Rear	WiFi MIMO	UNII (>6GHz) (RSDB)	DTS Ant.2	DTS (RSDB)	0.0990	0.1570	44
Rear	WiFi MIMO	UNII (<6GHz) (RSDB)	BT Ant.2	Bluetooth	0.0960	0.1560	
Rear	WiFi MIMO	UNII (>6GHz) (RSDB)	BT Ant.2	Bluetooth	0.0990	0.1544	

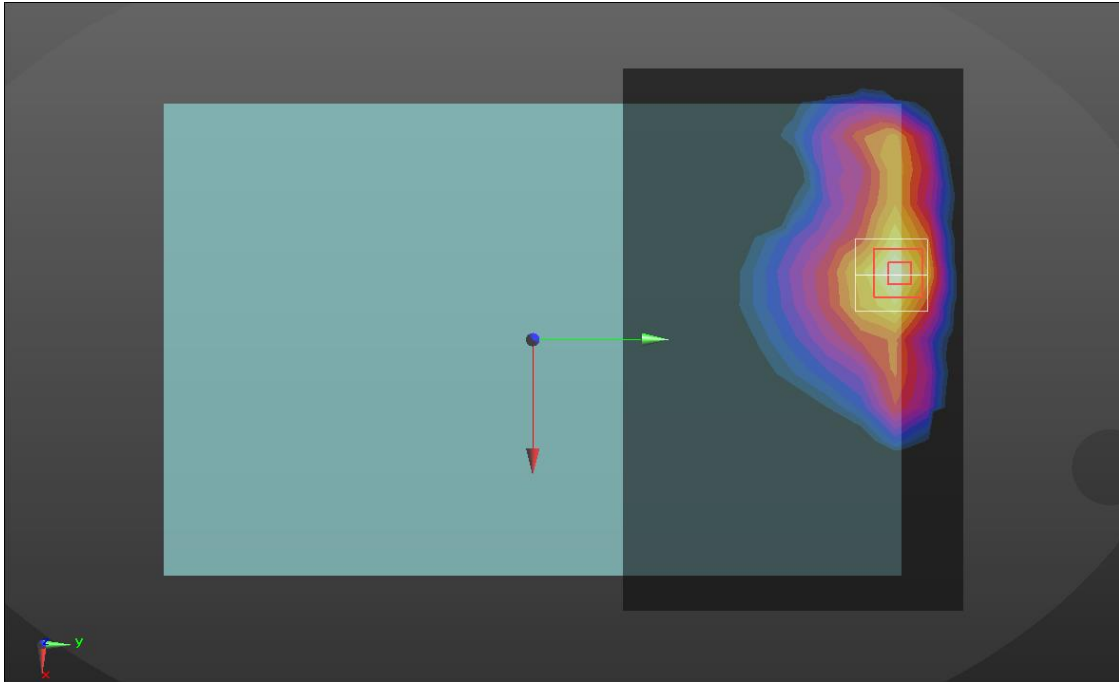
Plot.1



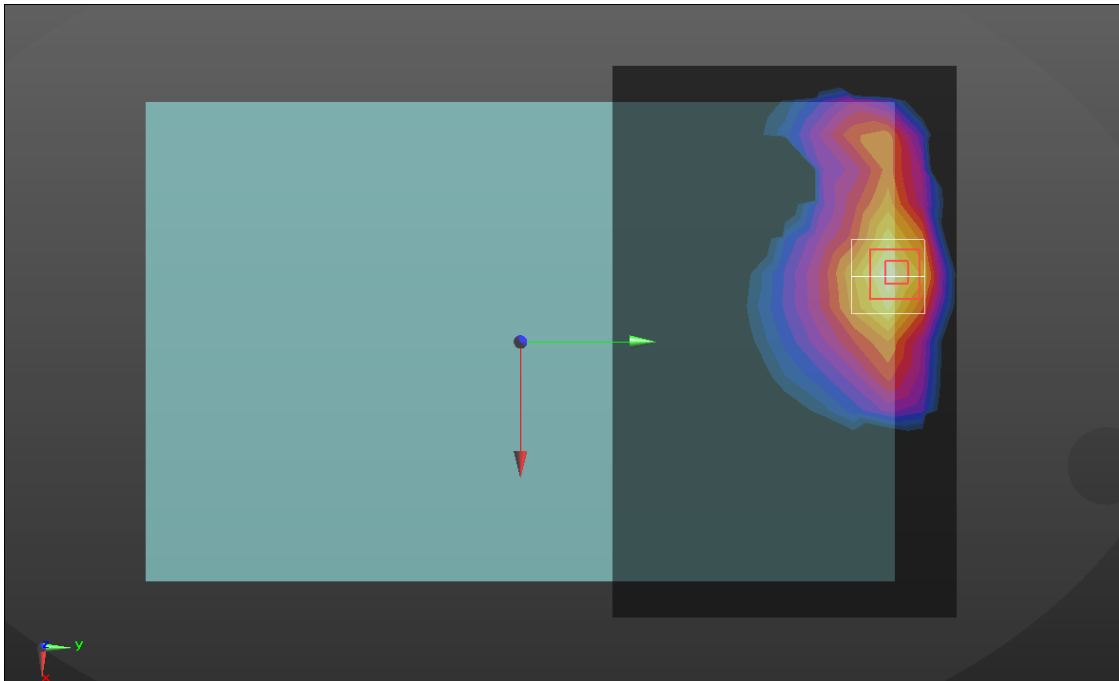
Plot.2



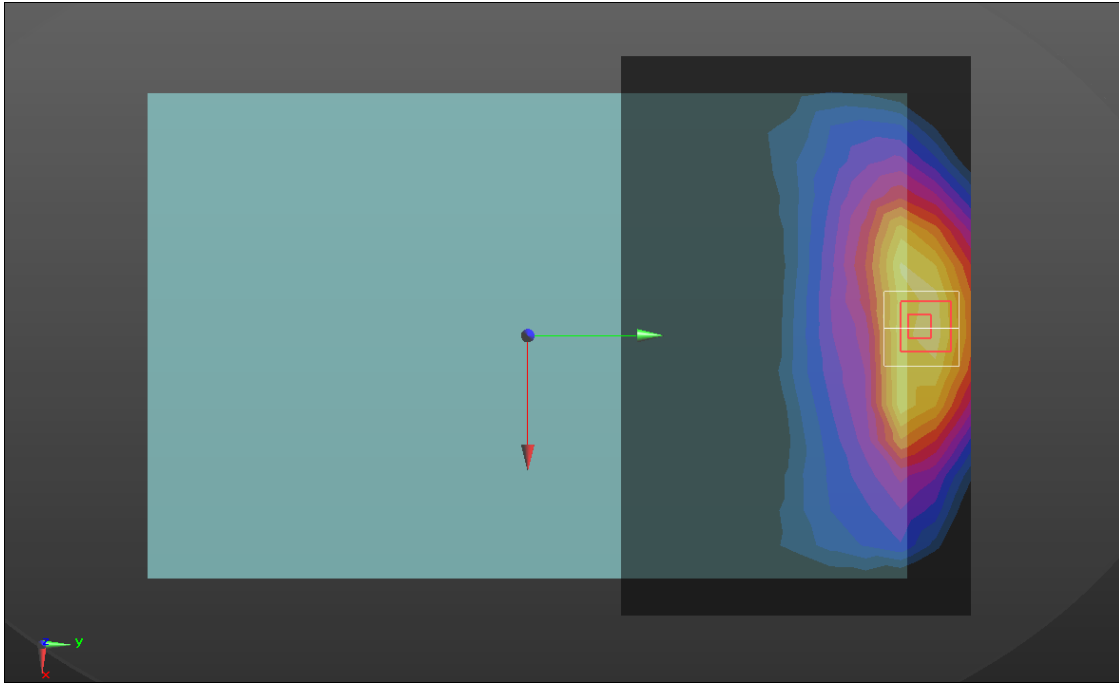
Plot.3



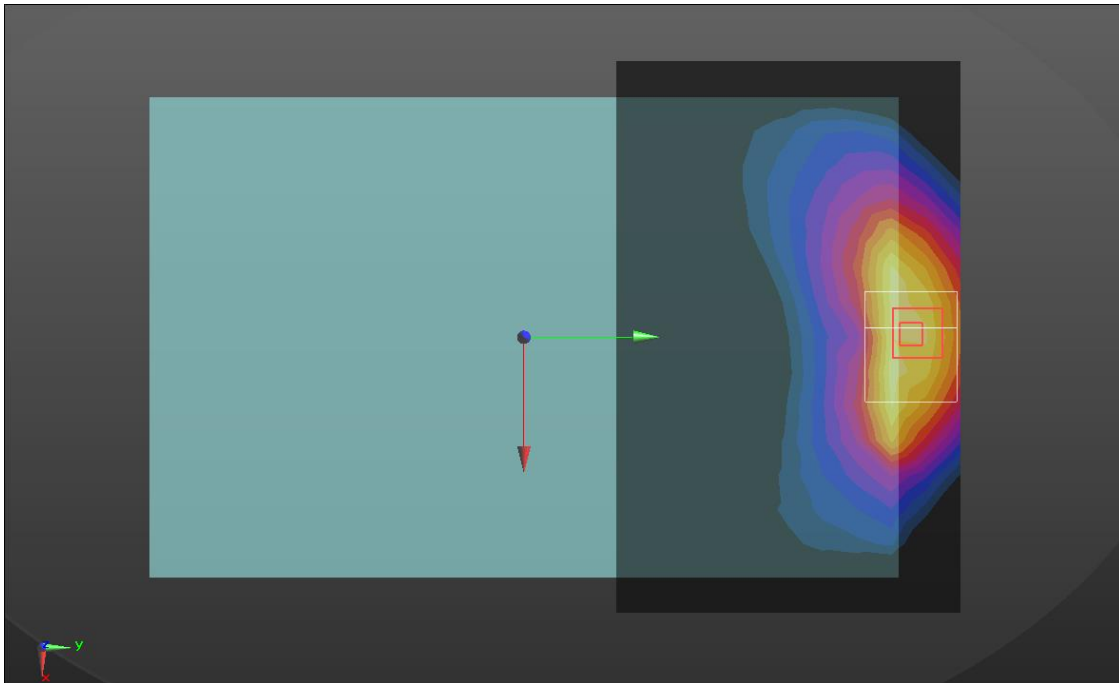
Plot.4



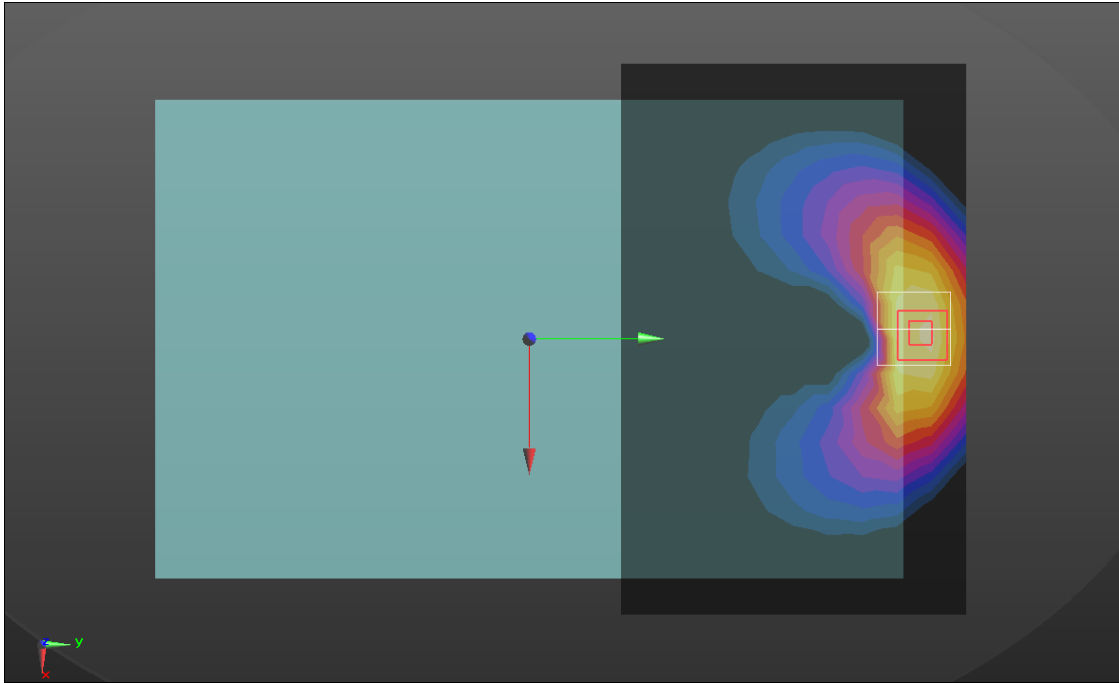
Plot.5



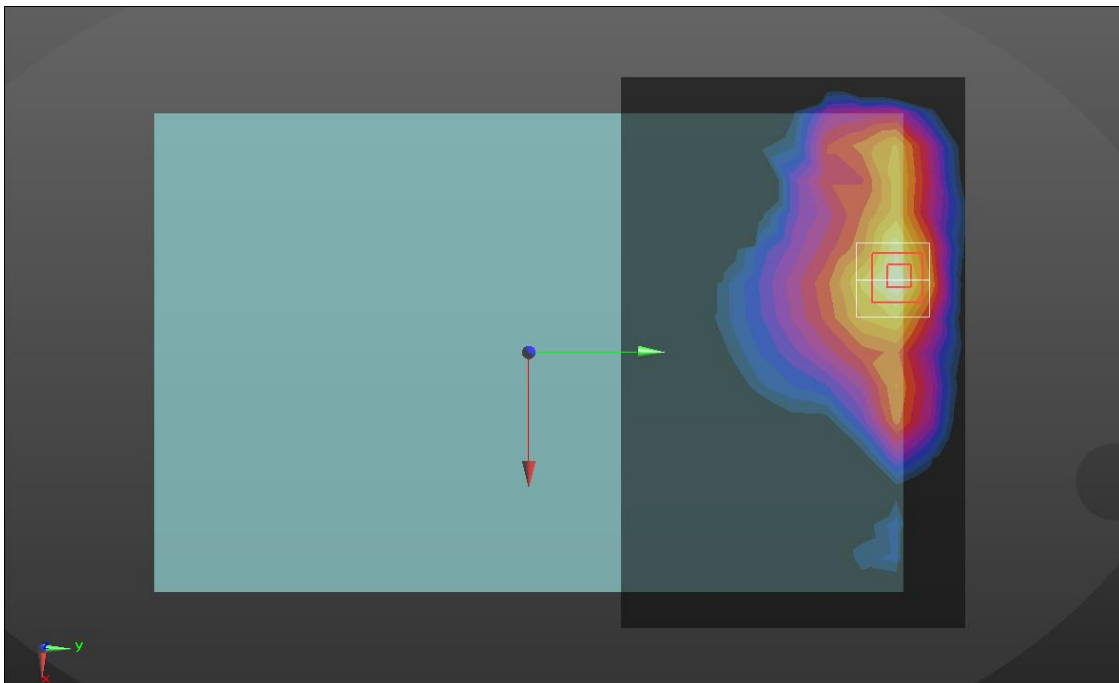
Plot.6



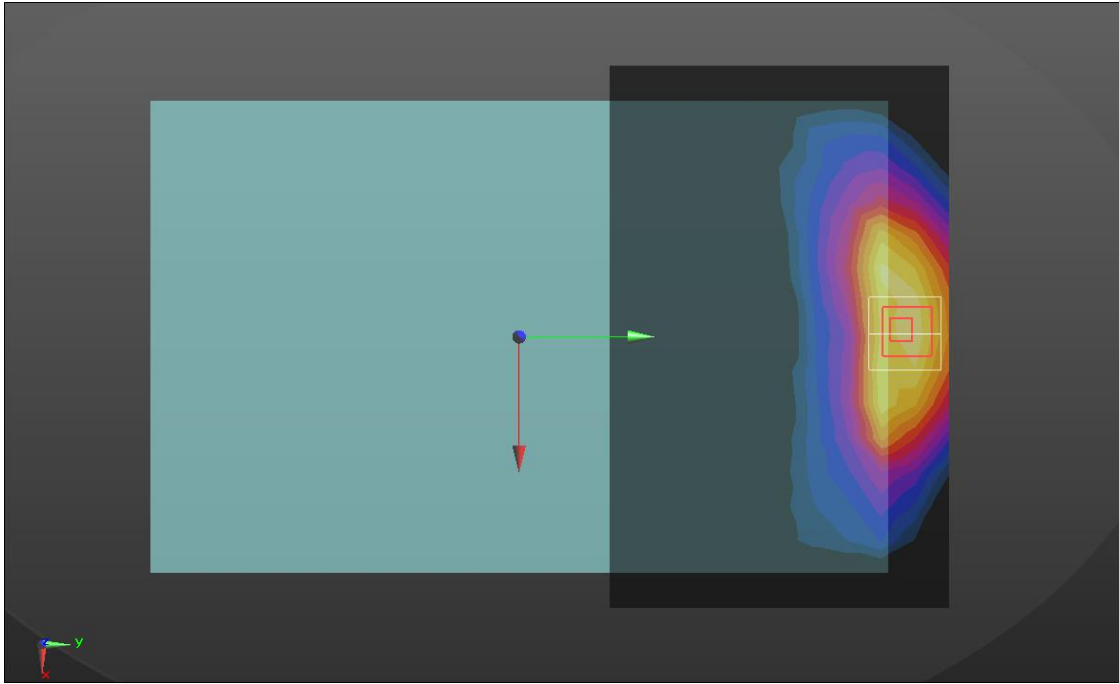
Plot.7



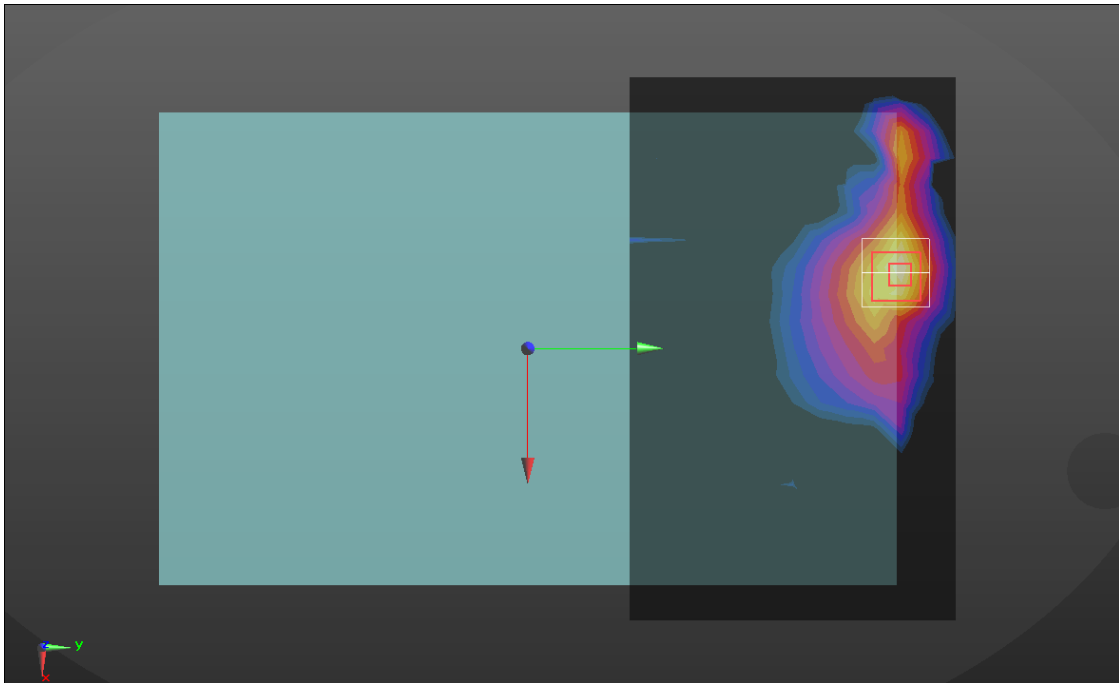
Plot.8



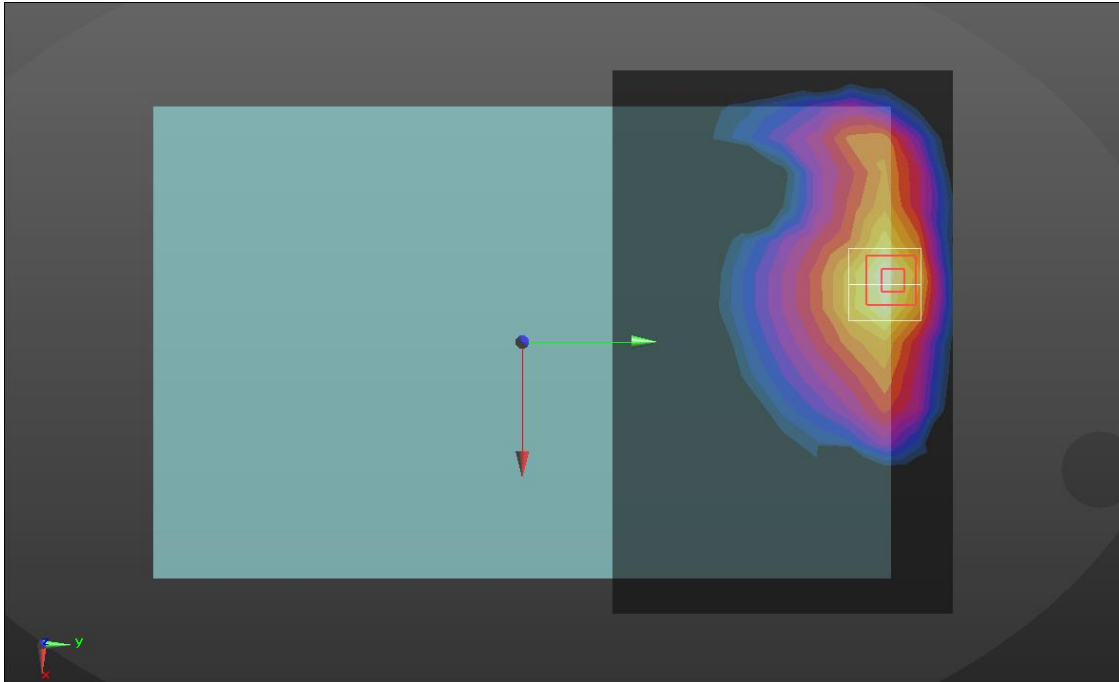
Plot.9



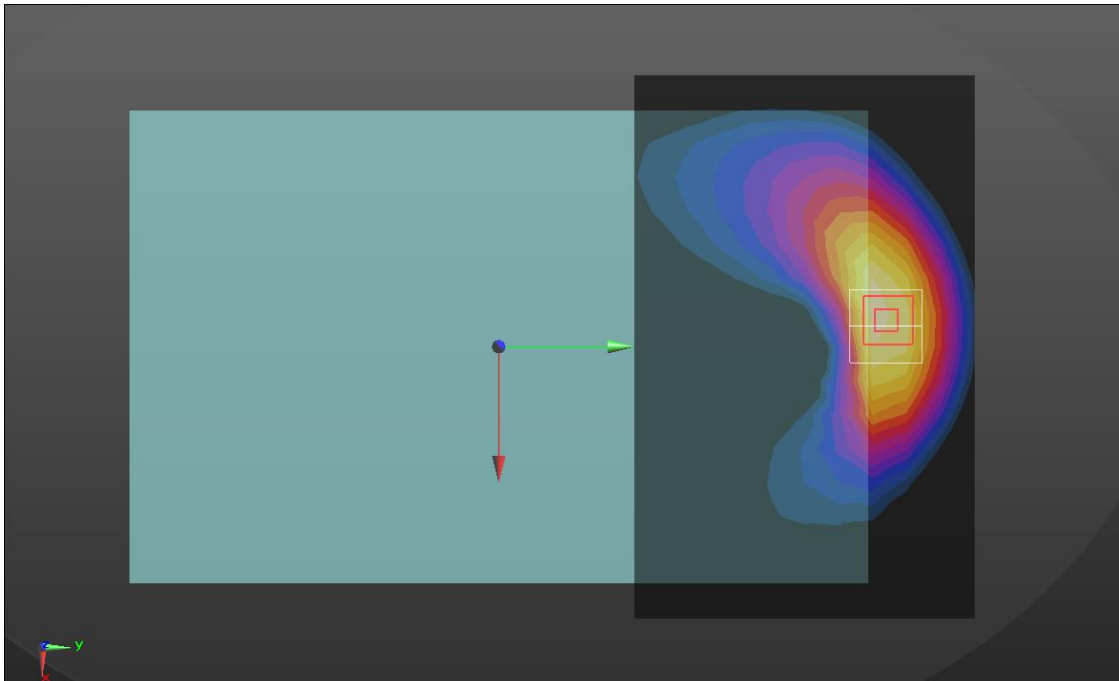
Plot.10



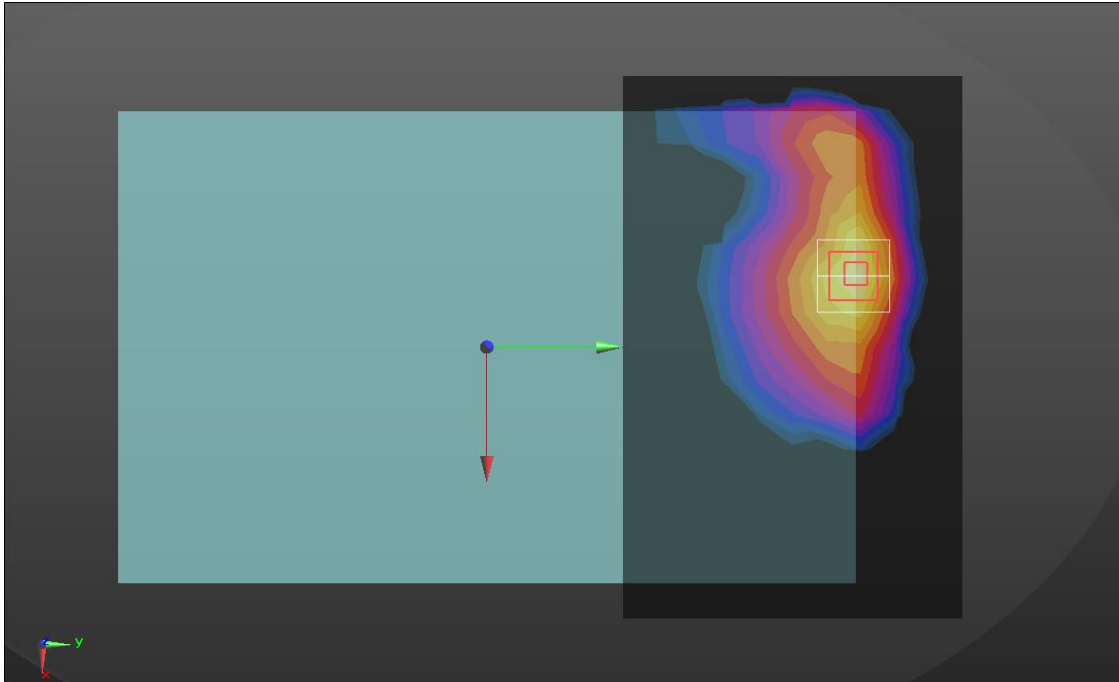
Plot.11



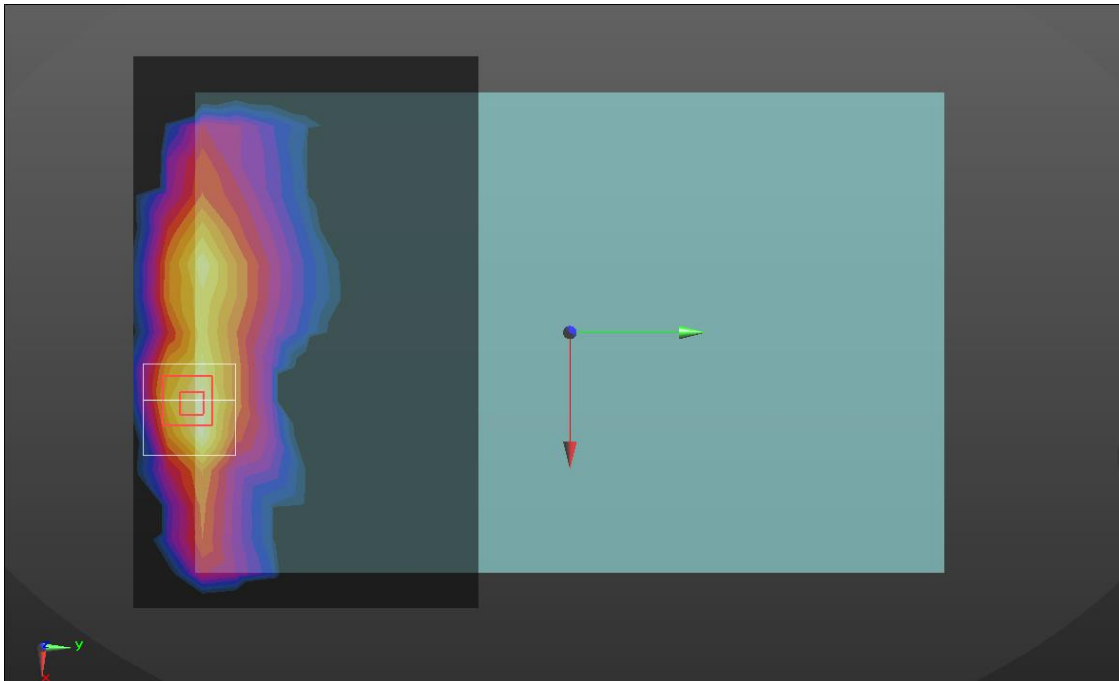
Plot.12



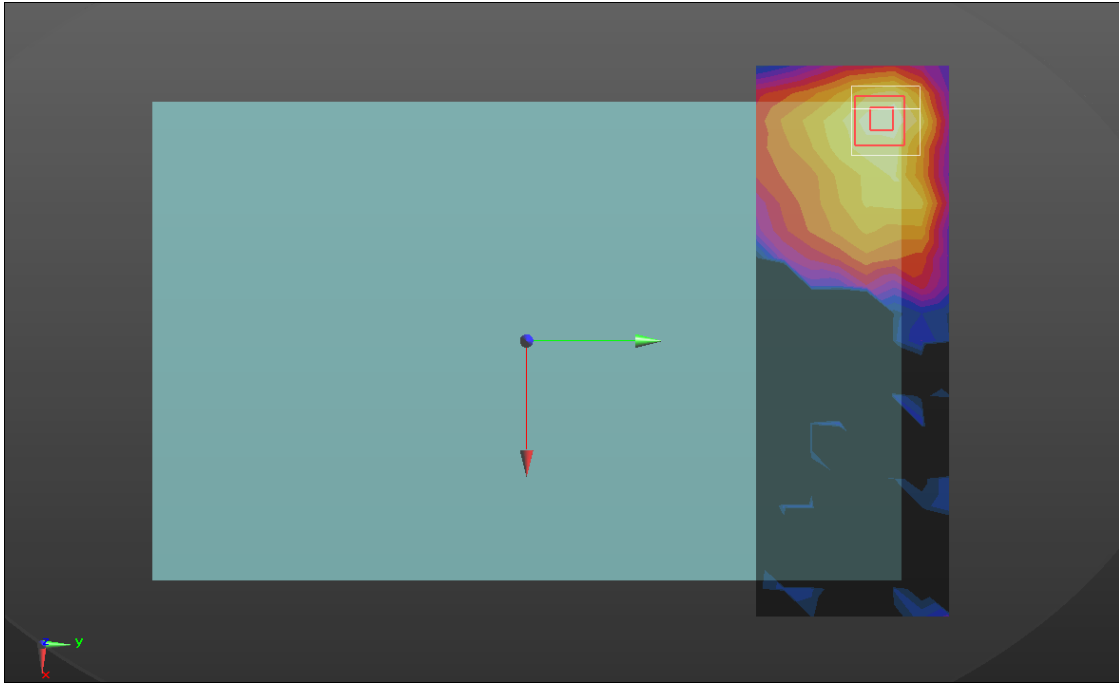
Plot.13



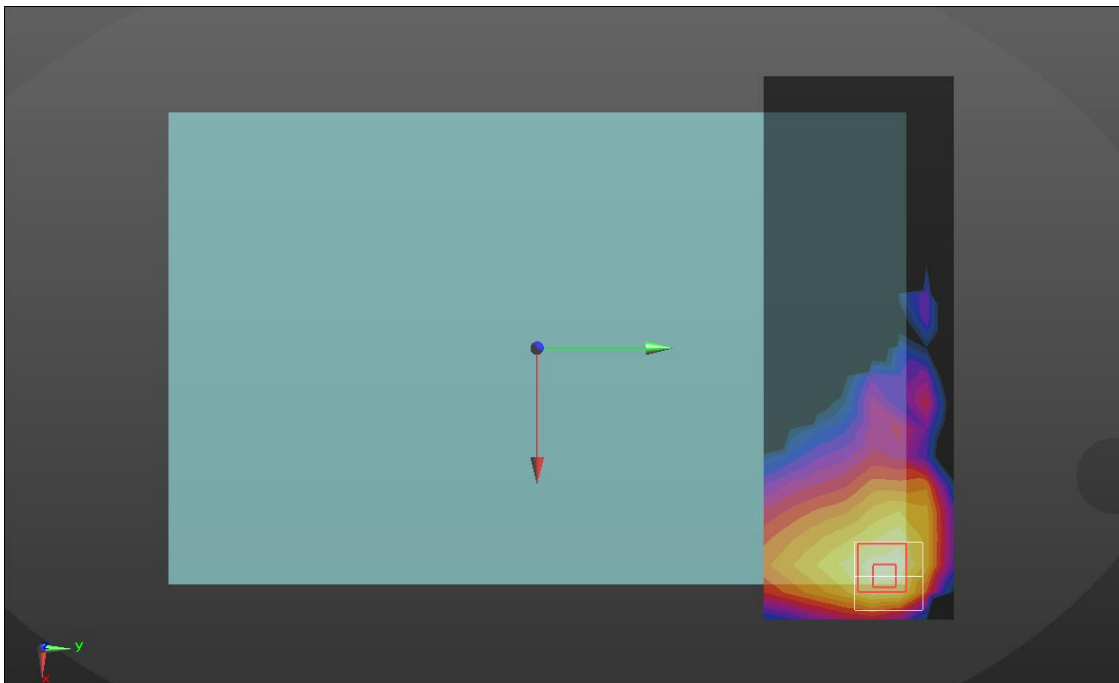
Plot.14



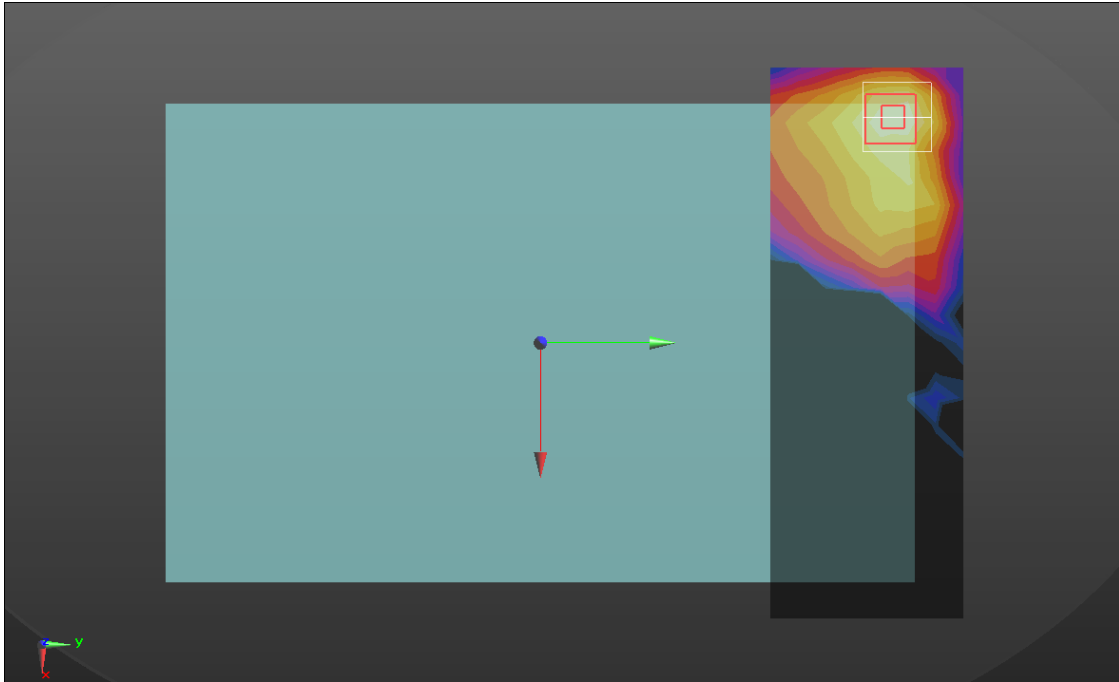
Plot.15



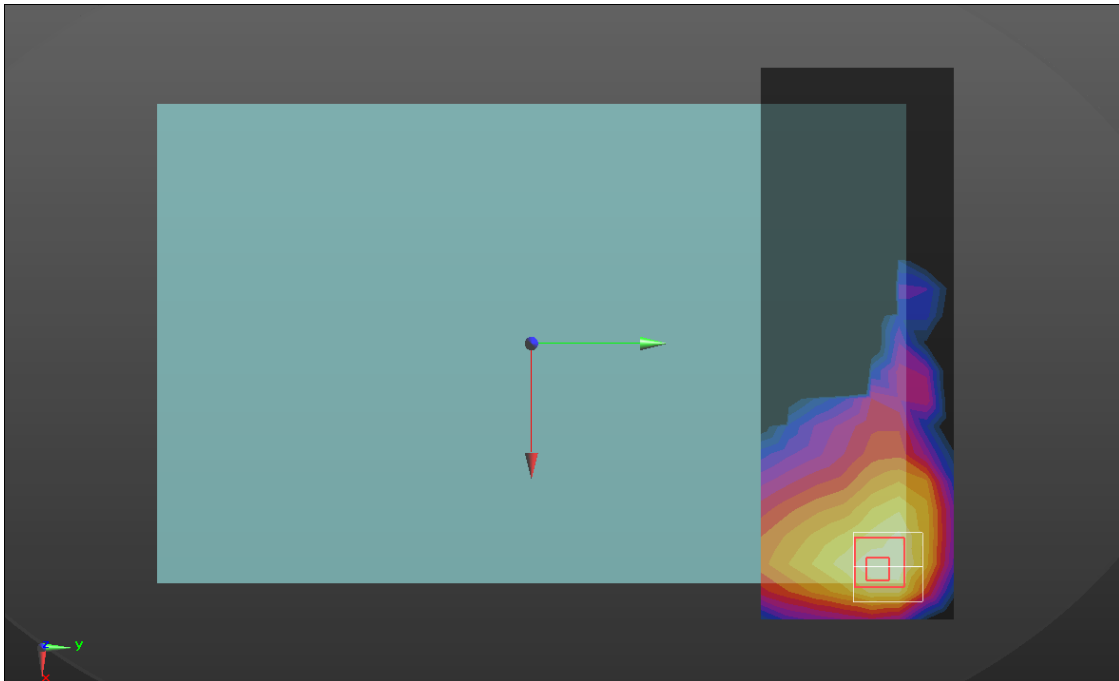
Plot.16



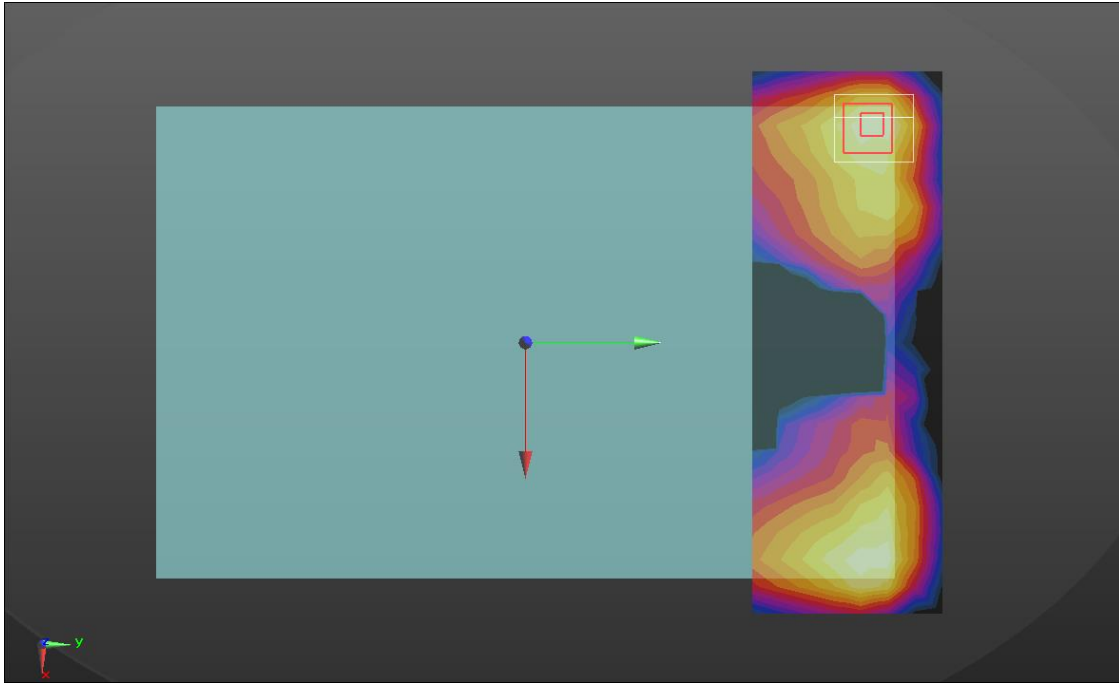
Plot.17



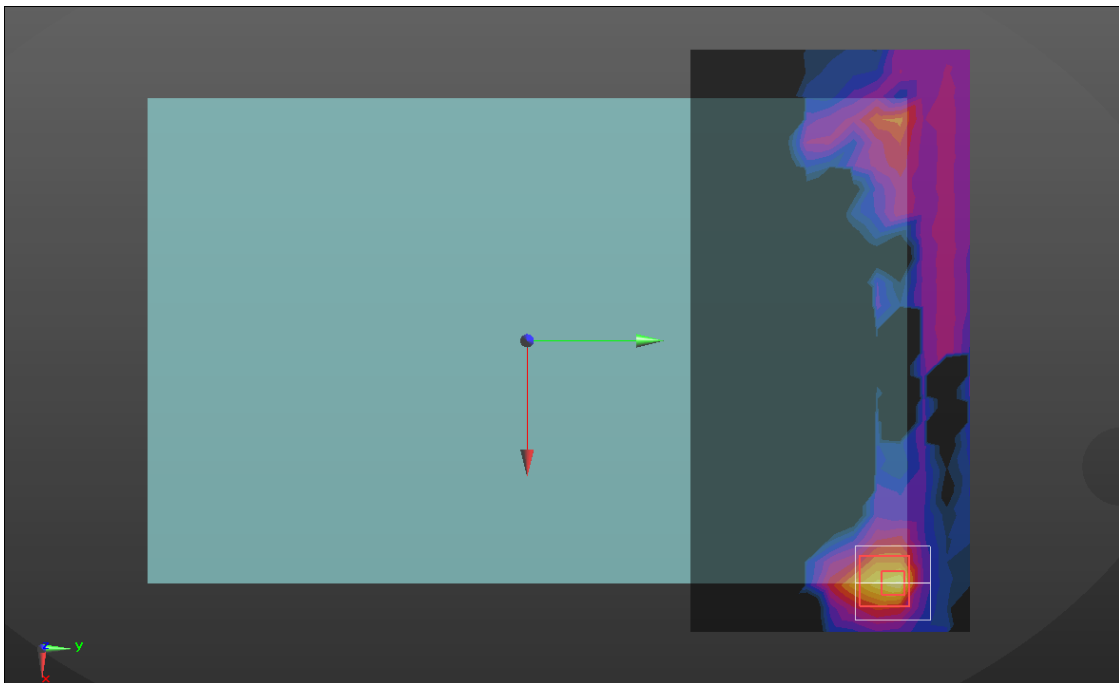
Plot.18



Plot.19



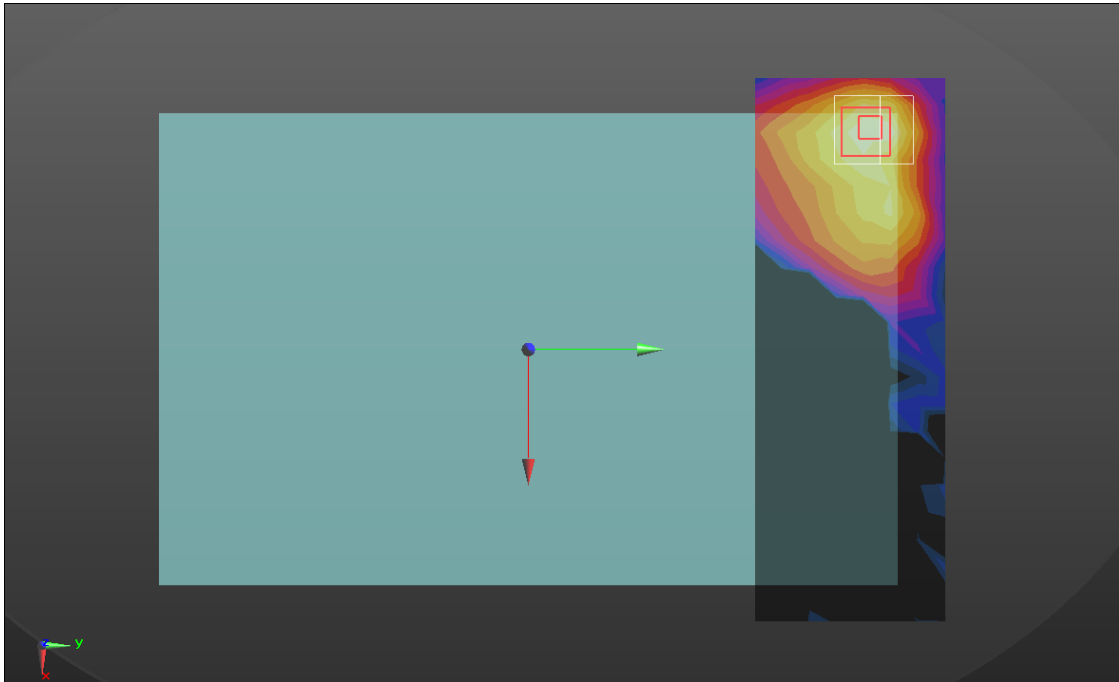
Plot.20



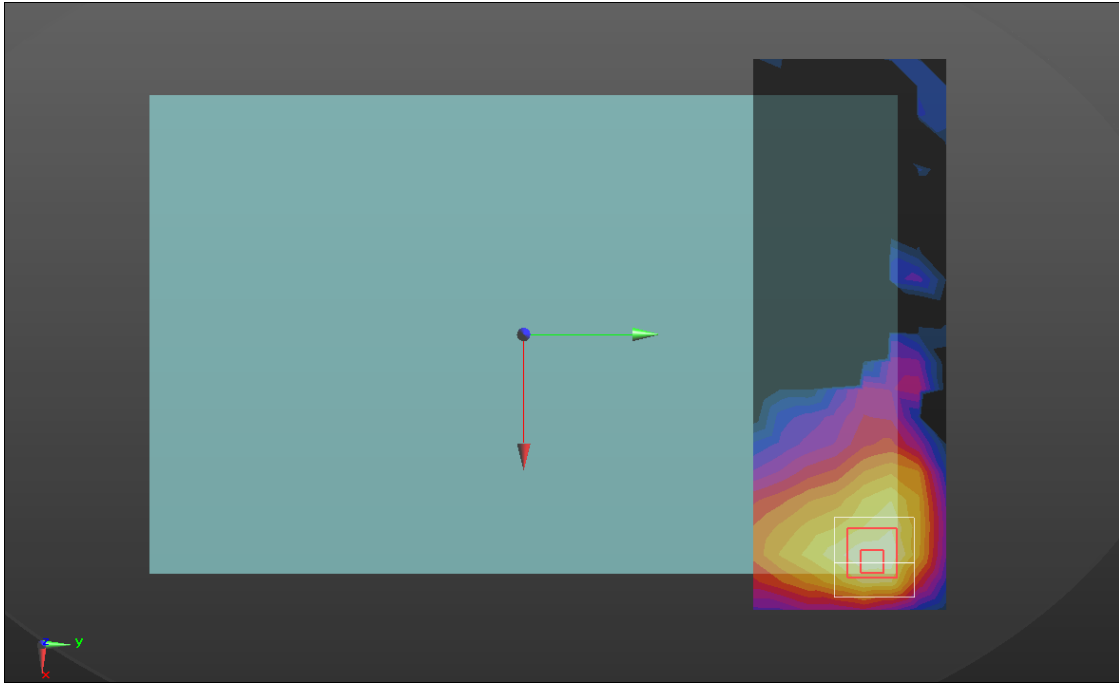
Plot.21



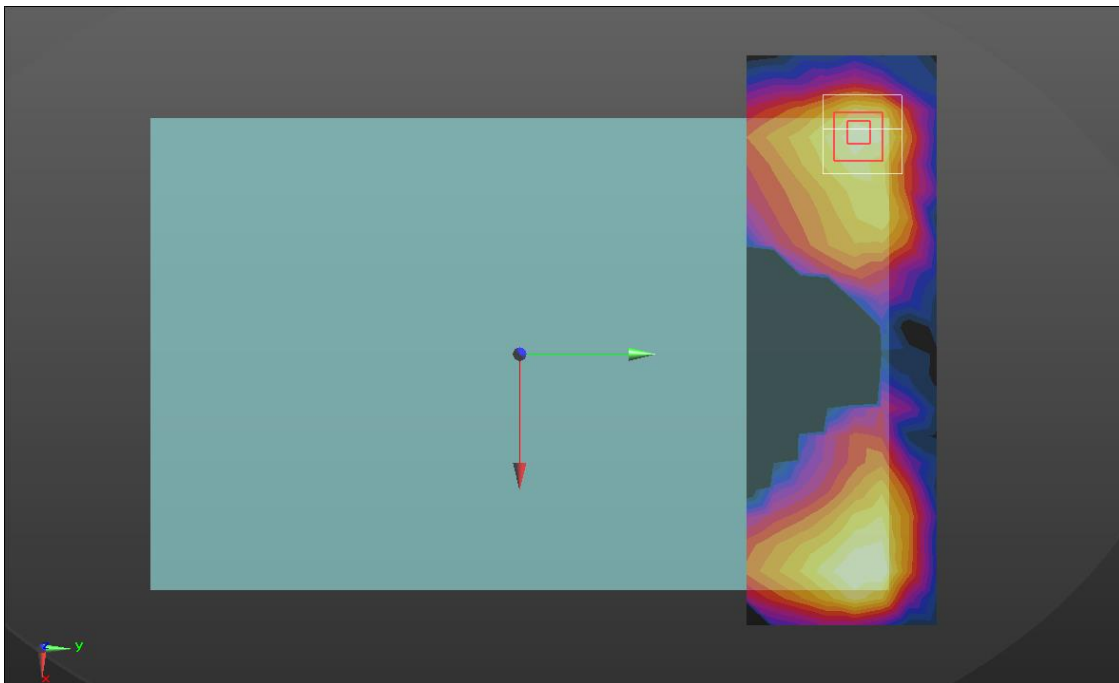
Plot.22



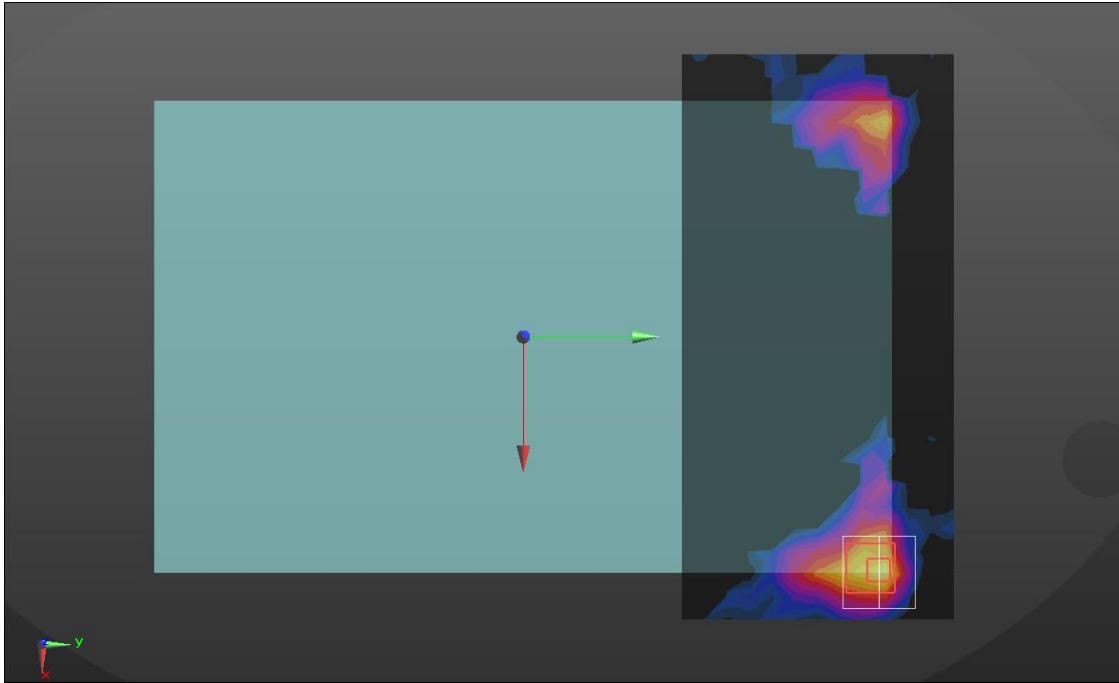
Plot.23



Plot.24



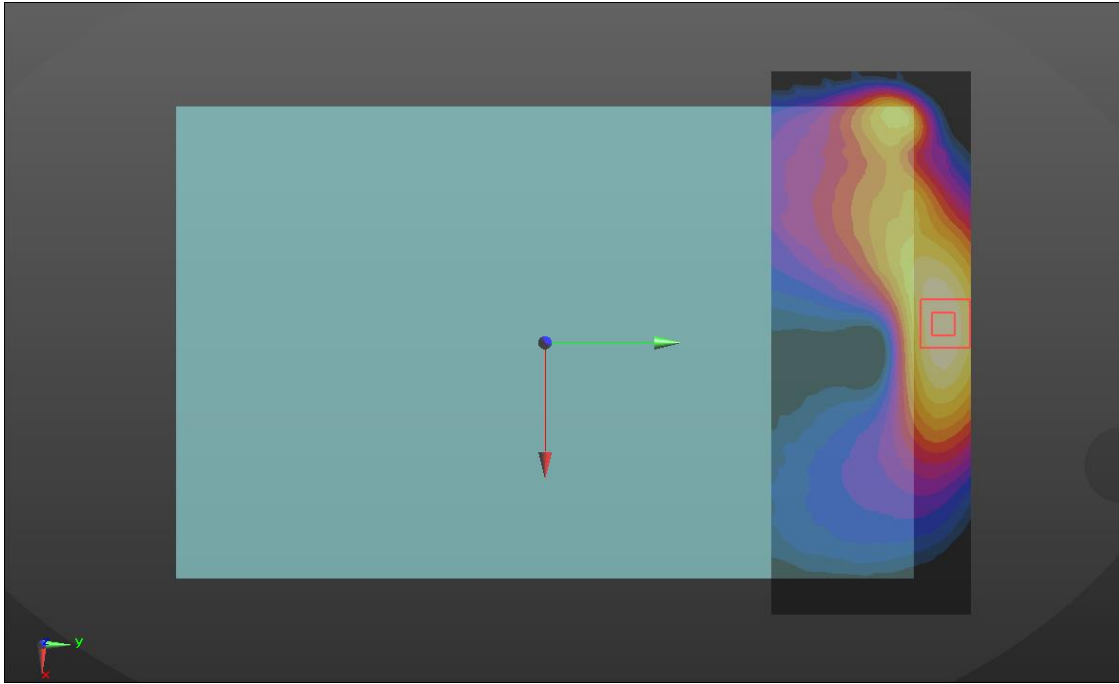
Plot.25



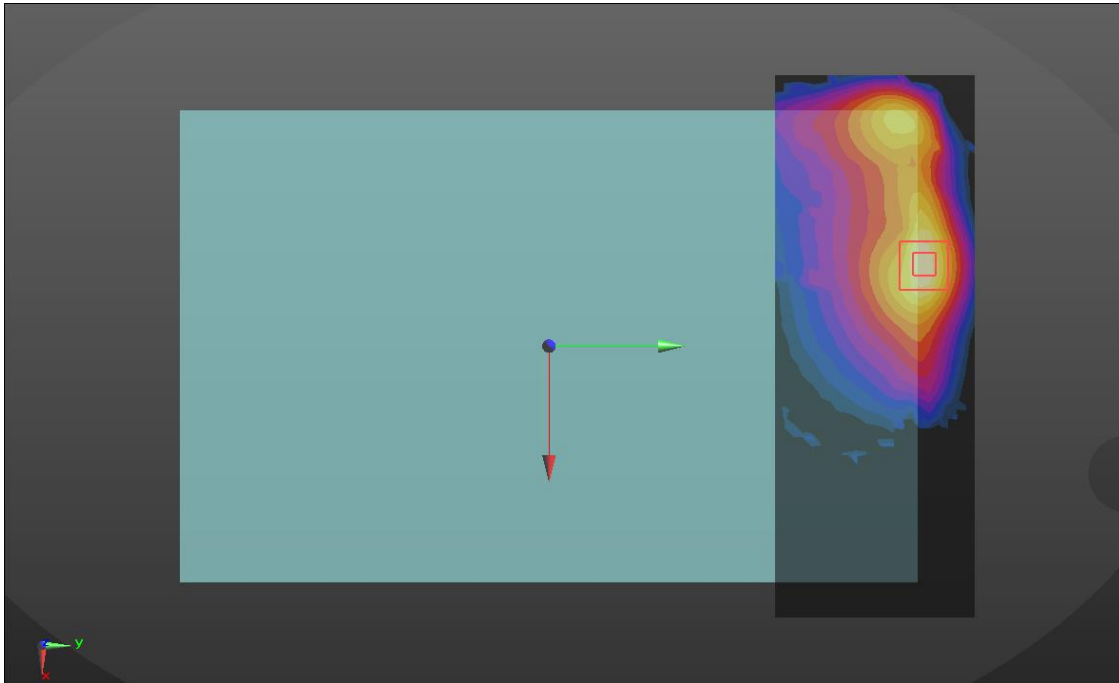
Plot.26



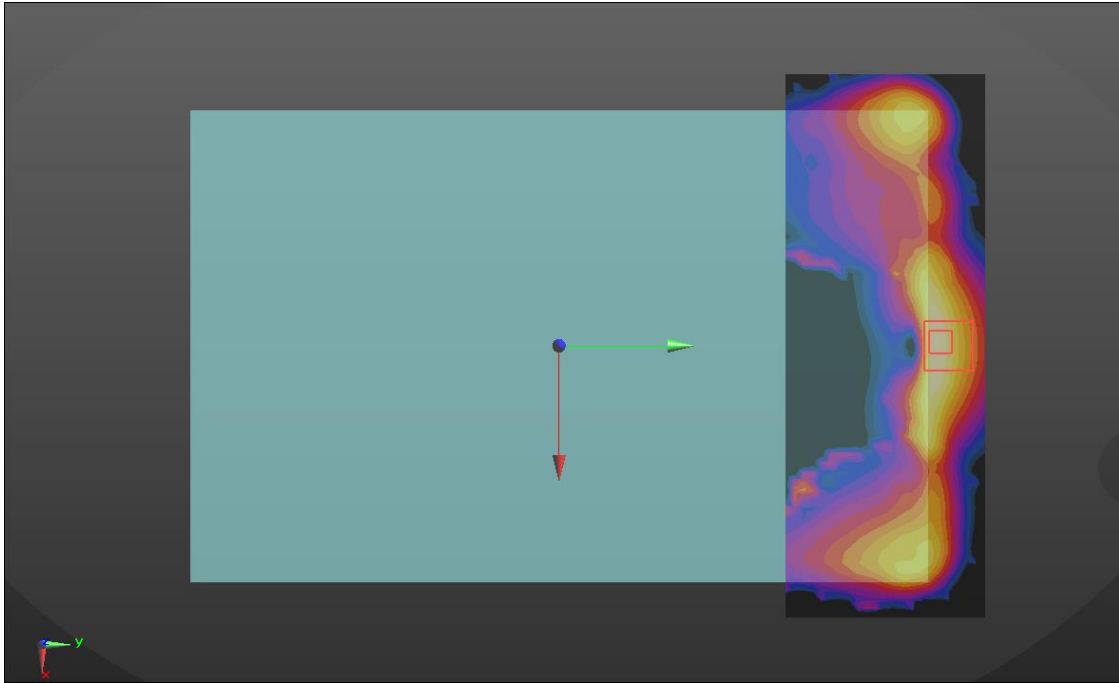
Plot.27



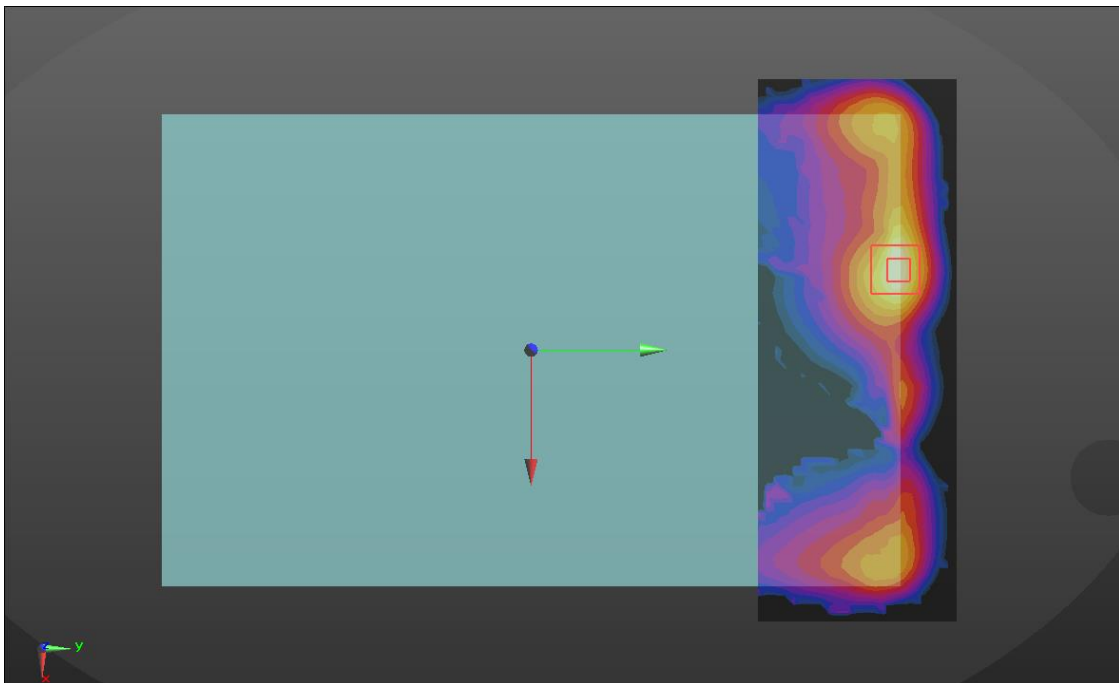
Plot.28



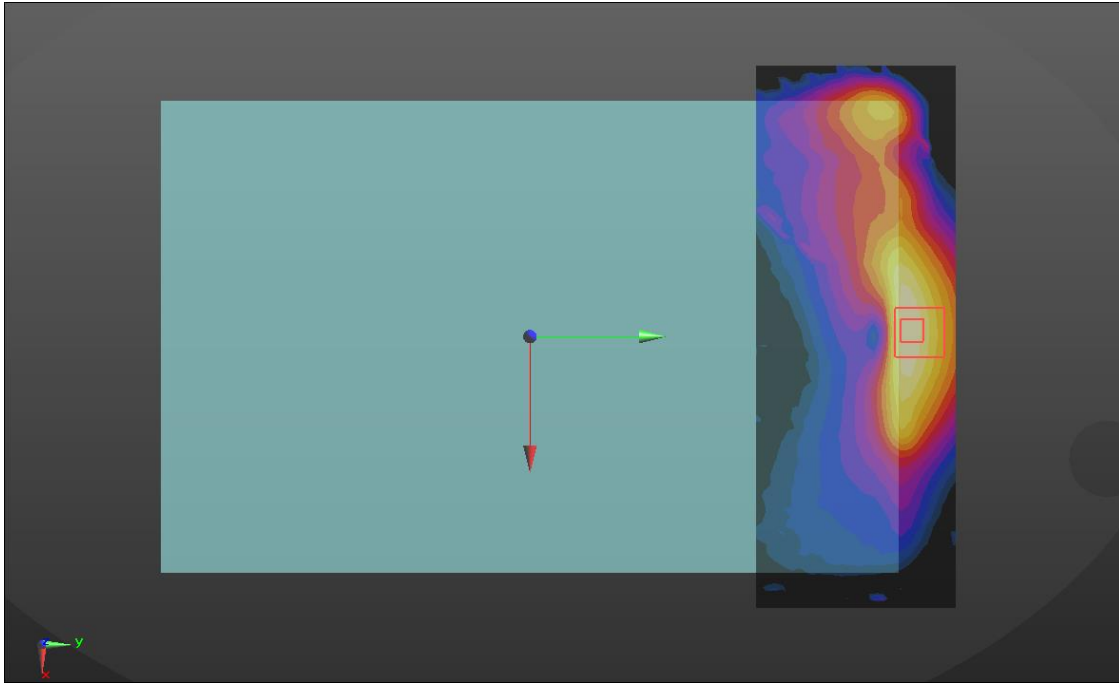
Plot.29



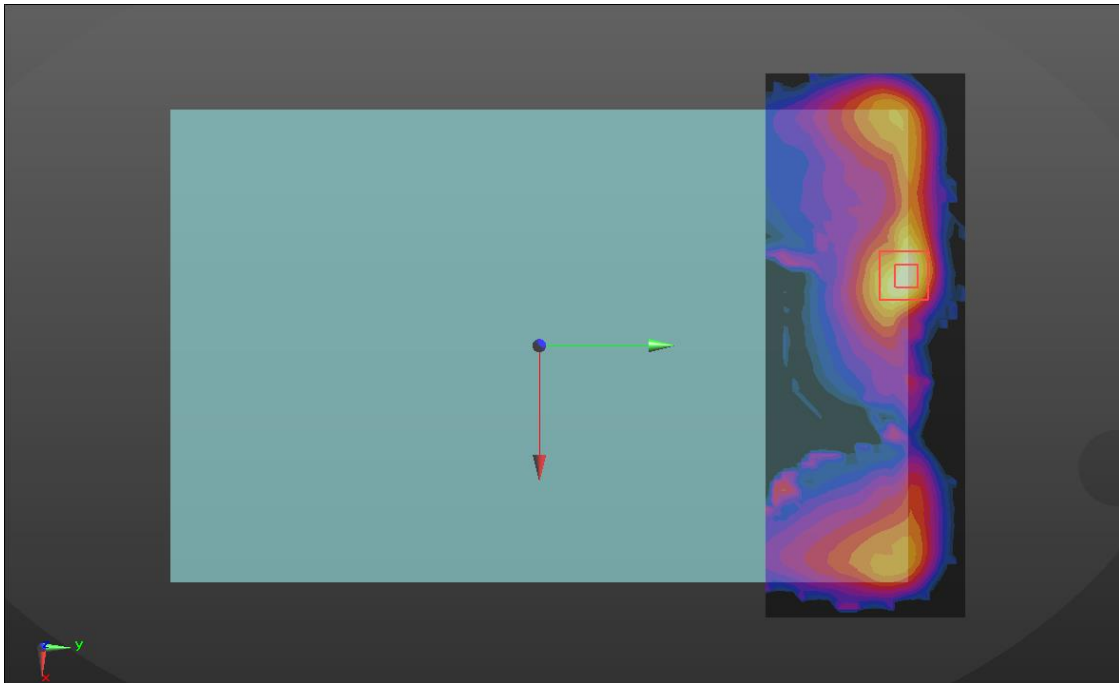
Plot.30



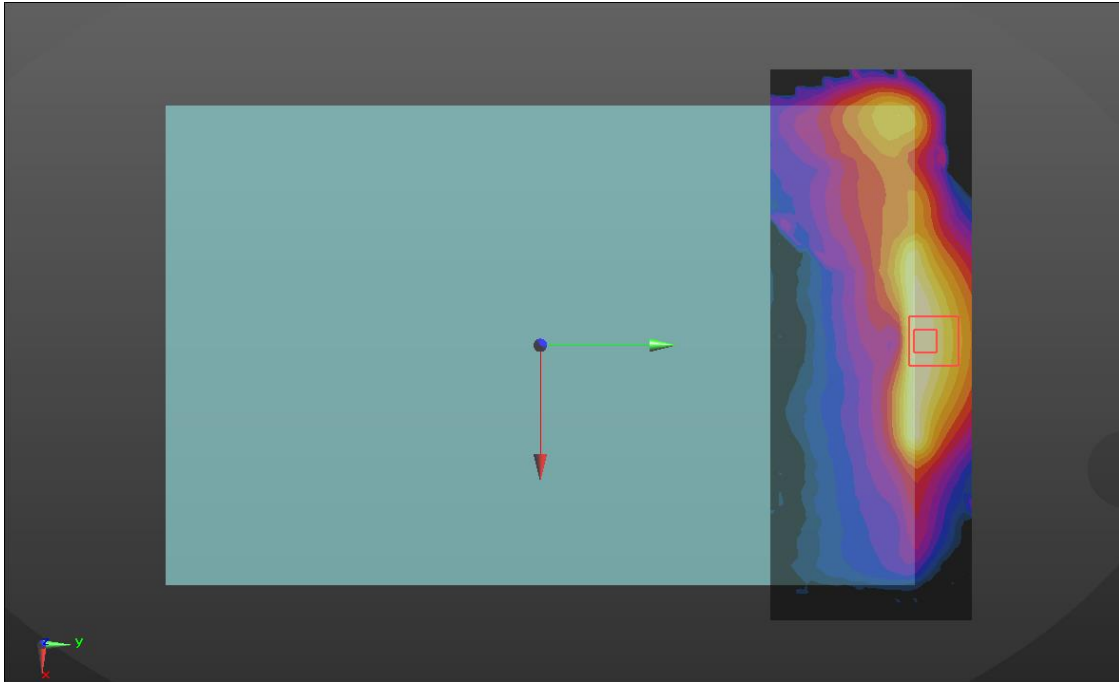
Plot.31



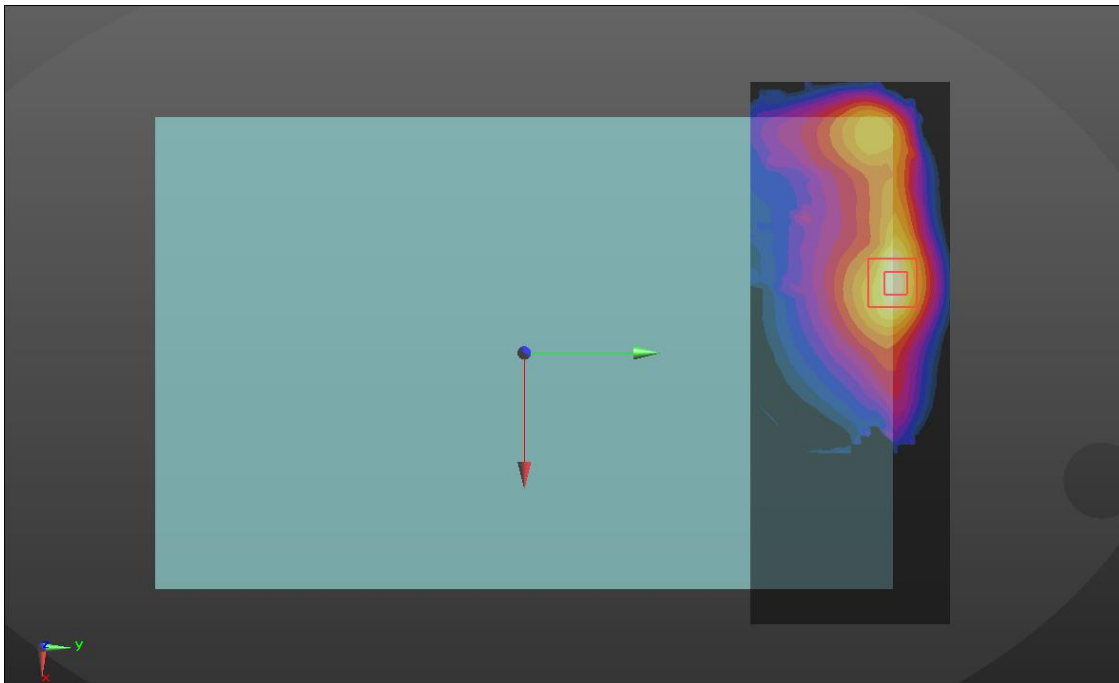
Plot.32



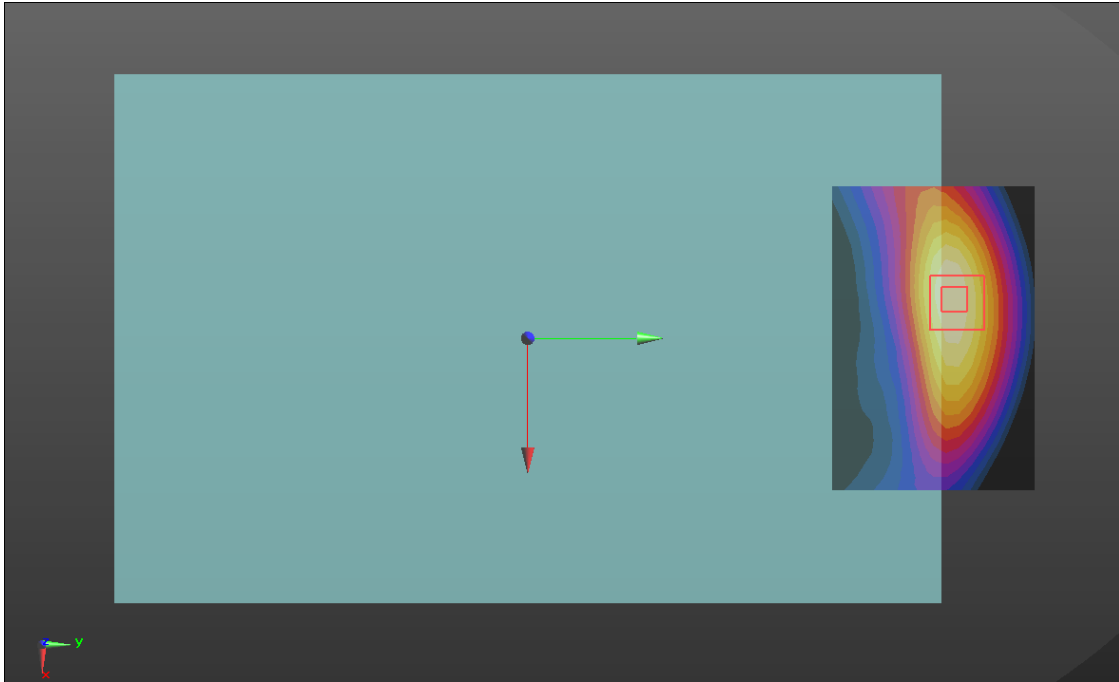
Plot.33



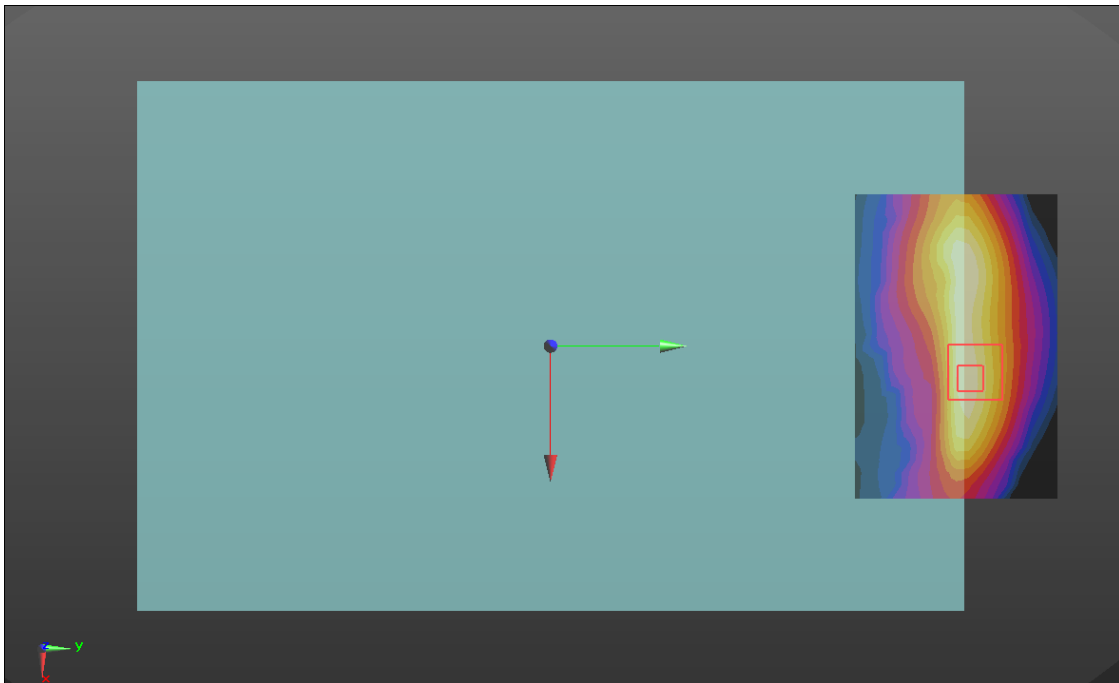
Plot.34



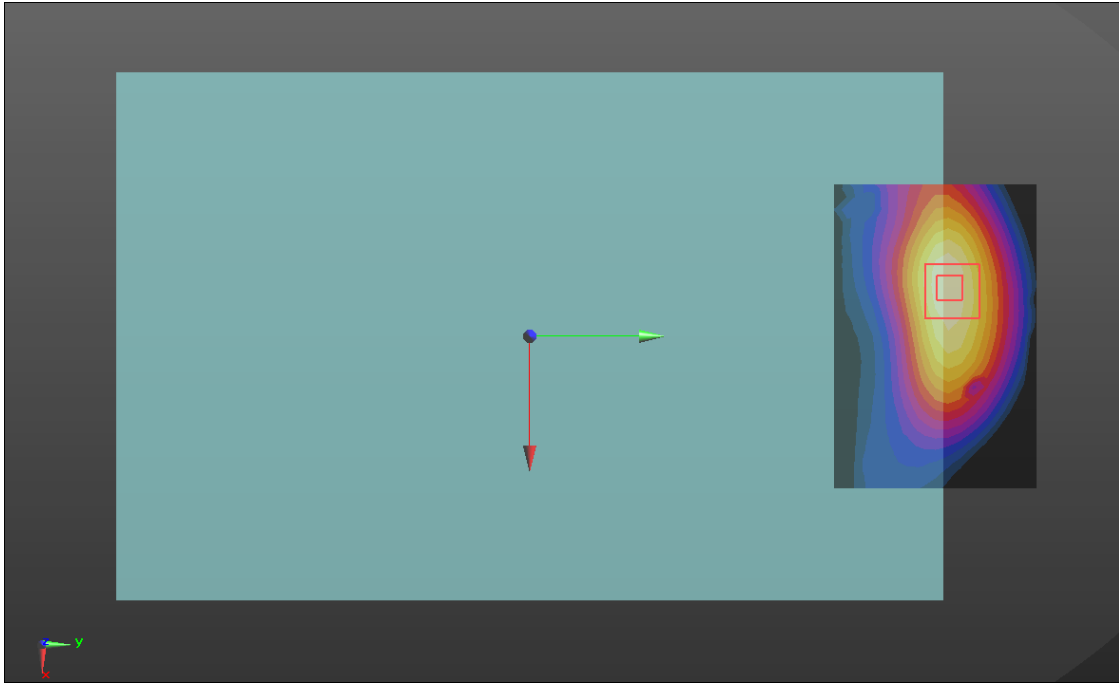
Plot.35



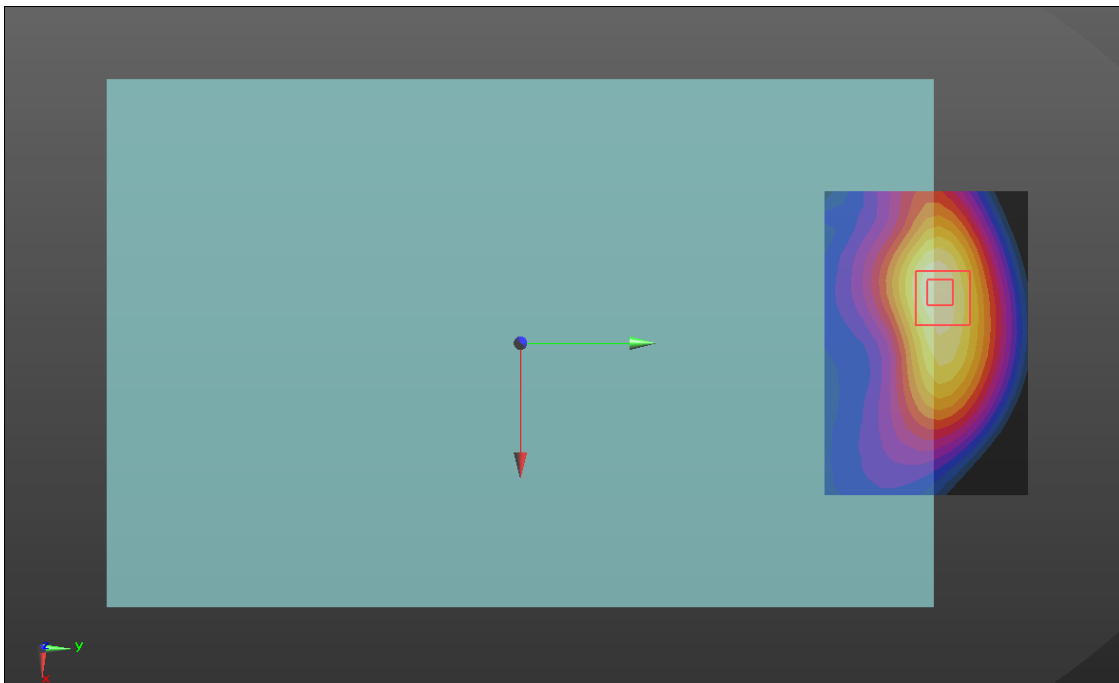
Plot.36



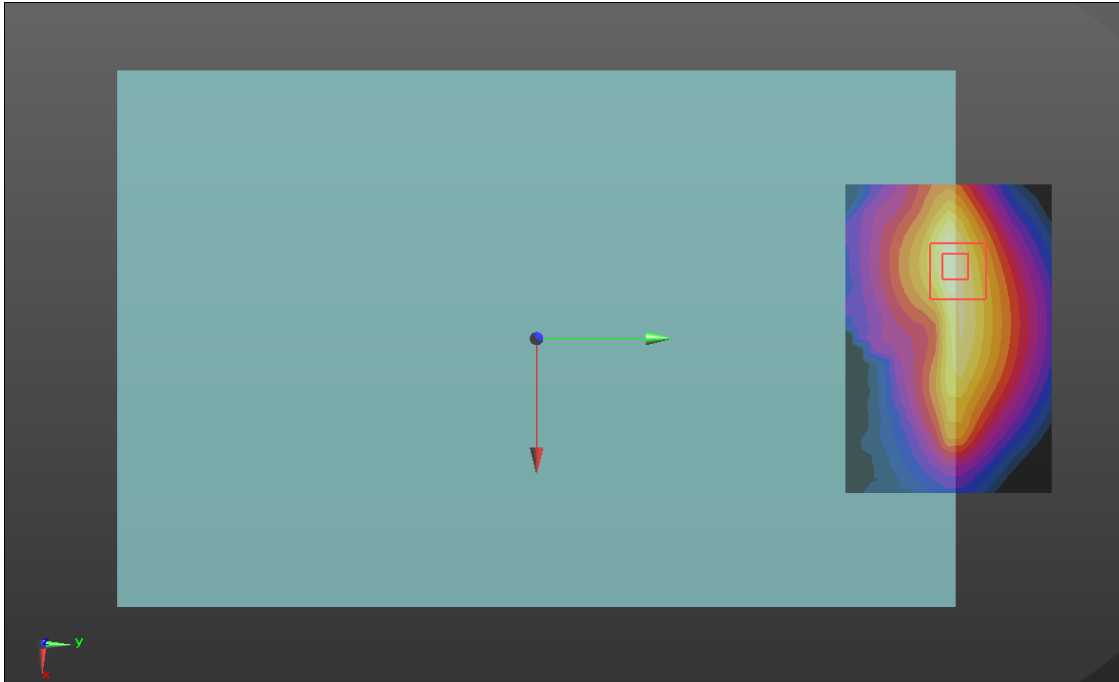
Plot.37



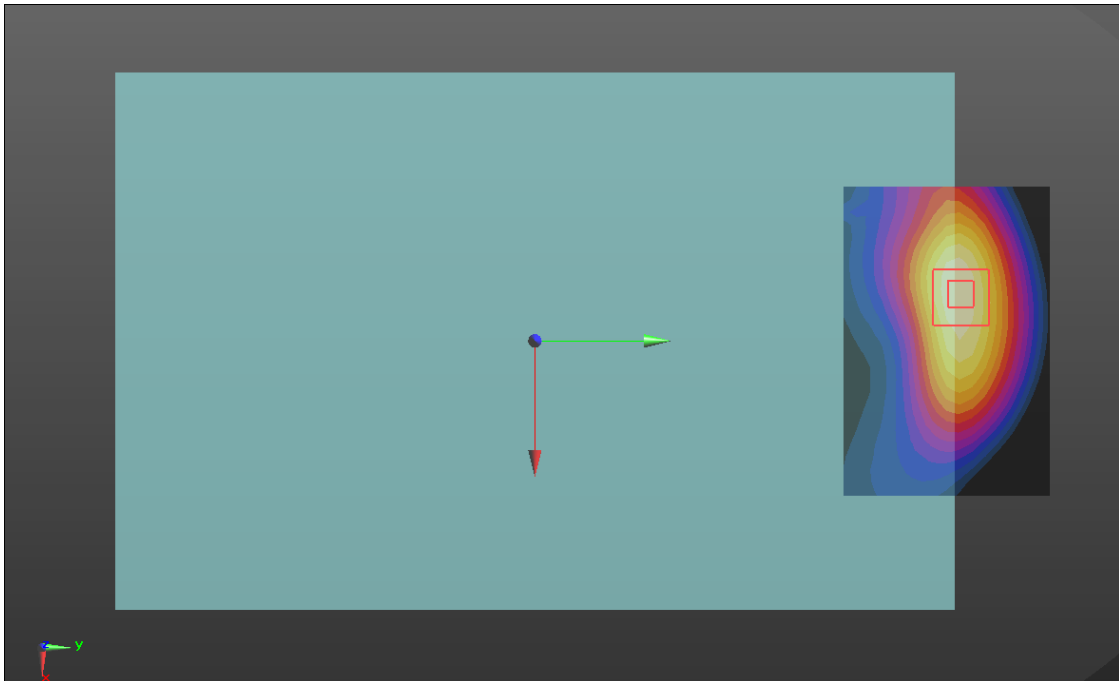
Plot.38



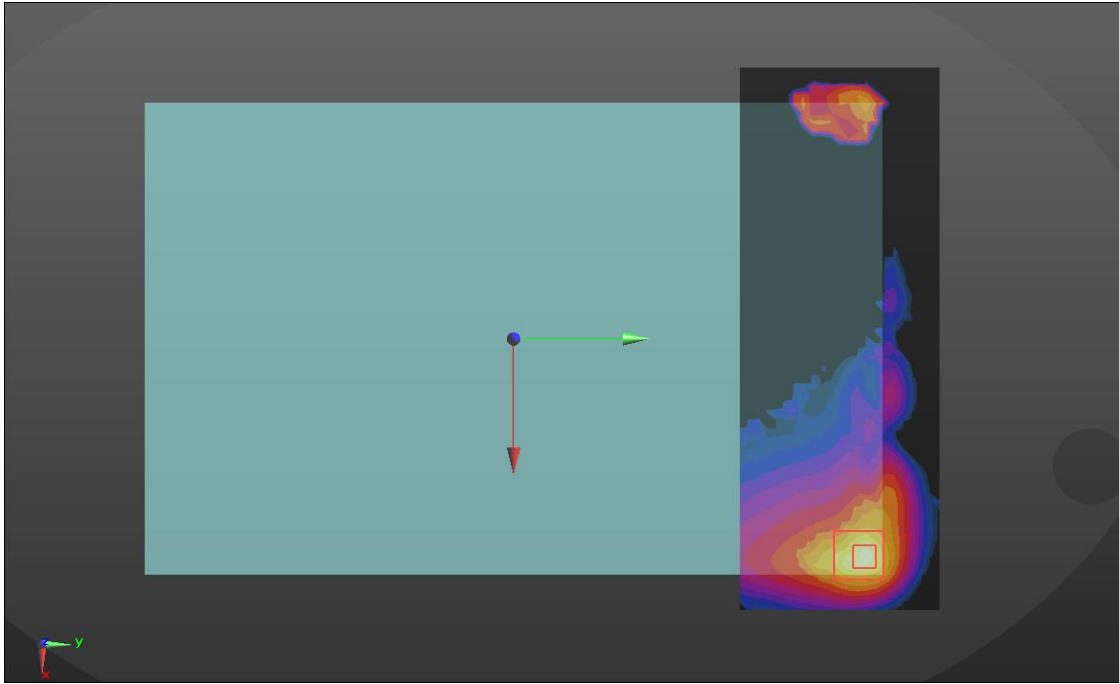
Plot.39



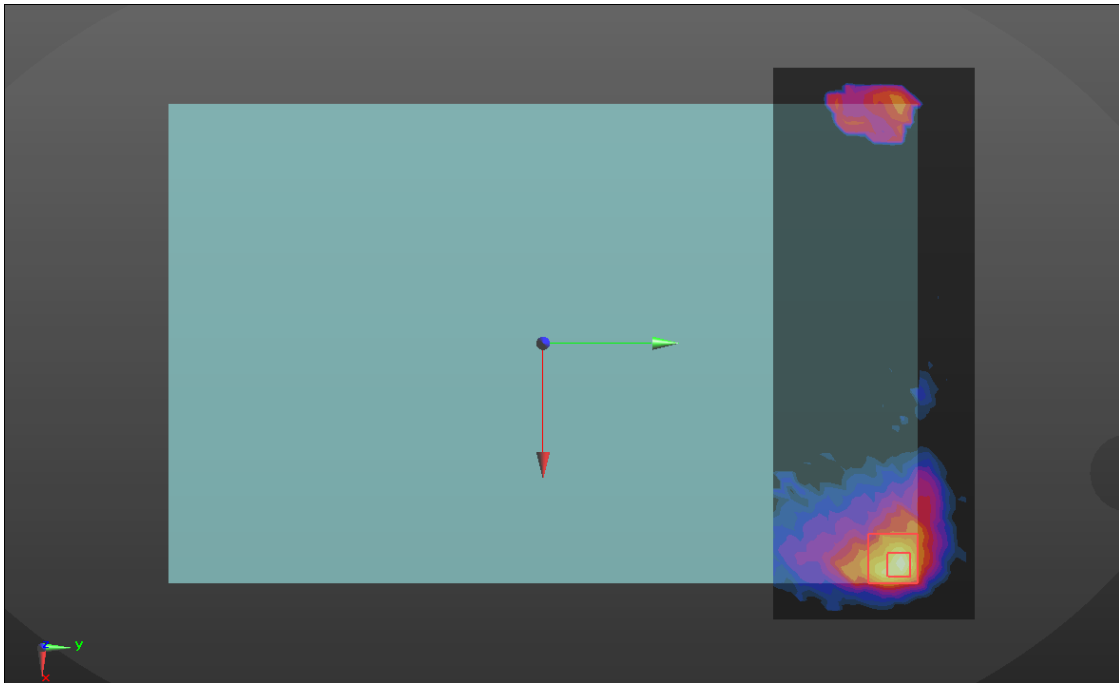
Plot.40



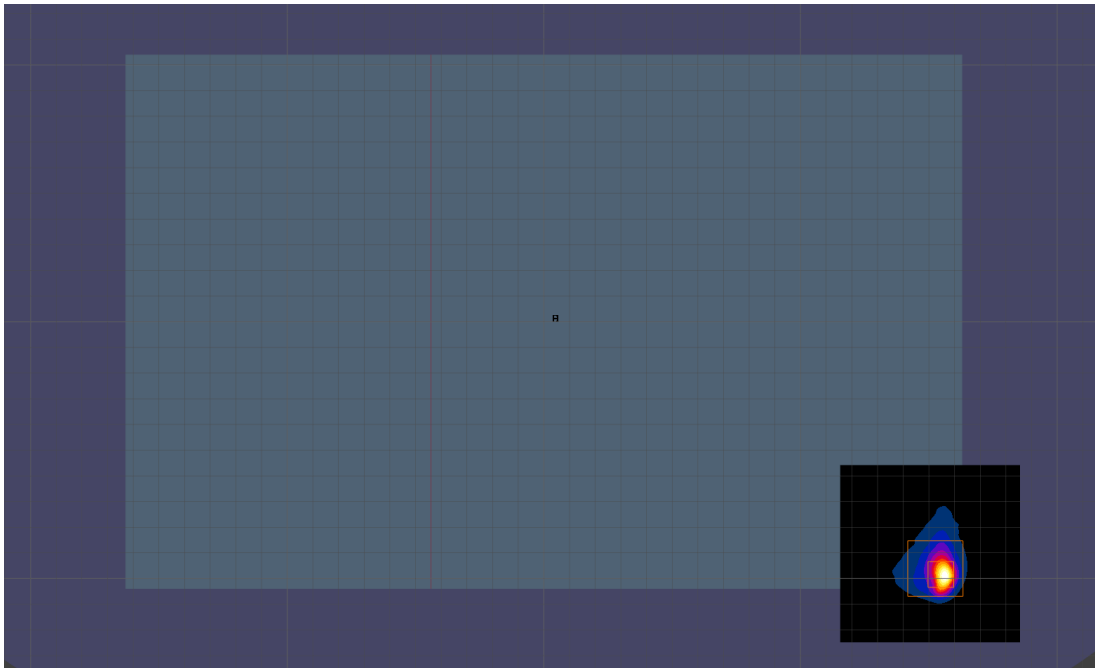
Plot.41



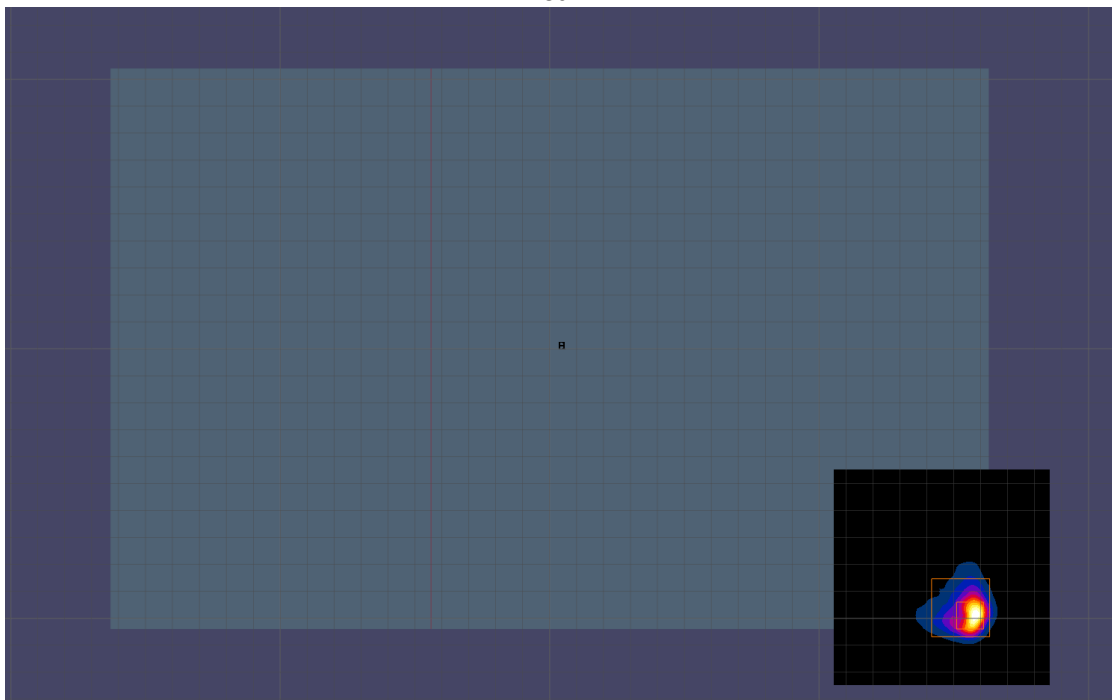
Plot.42



Plot.43



Plot.44



Calculation results of separation distance between Peak SAR locations of each one pair.

Figure	Mode		SAR W/kg	X m	Y m	Z m	d: Calculated distance (mm)
1	GSM 850	1	0.761	-0.0090	0.1730	0.0000	1 + 2 114.1
	UNII MIMO	2	0.797	0.1040	0.1570	0.0000	
2	GSM850+BT Ant.1	1	0.623	-0.0080	0.1760	0.0000	1 + 2 113.6
	UNII MIMO	2	0.797	0.1040	0.1570	0.0000	
3	GSM 850	1	0.761	-0.0090	0.1730	0.0000	1 + 2 106.4
	UNII MIMO+BT Ant.2	2	1.230	0.0960	0.1560	0.0000	
4	GSM 850	1	0.761	-0.0090	0.1730	0.0000	1 + 2 109.8
	UNII MIMO	2	0.614	0.0996	0.1566	0.0000	
5	GSM850+BT Ant.1	1	0.623	-0.0080	0.1760	0.0000	1 + 2 109.3
	UNII MIMO	2	0.614	0.0996	0.1566	0.0000	
6	GSM 850	1	0.761	-0.0090	0.1730	0.0000	1 + 2 109.6
	UNII MIMO+BT Ant.2	2	1.160	0.0990	0.1544	0.0000	
7	GSM850+DTS Ant.1	1	0.623	-0.0080	0.1760	0.0000	1 + 2 113.6
	UNII MIMO	2	0.437	0.1040	0.1570	0.0000	
8	GSM850+DTS MIMO	1	0.623	-0.0080	0.1760	0.0000	1 + 2 113.6
	UNII MIMO	2	0.437	0.1040	0.1570	0.0000	
9	GSM850+BT Ant.1	1	0.623	-0.0080	0.1760	0.0000	1 + 2 113.8
	UNII MIMO+DTS Ant.2	2	0.819	0.1040	0.1560	0.0000	
10	GSM850+DTS Ant.1	1	0.623	-0.0080	0.1760	0.0000	1 + 2 108.7
	UNII MIMO	2	0.586	0.0990	0.1570	0.0000	
11	GSM850+DTS MIMO	1	0.623	-0.0080	0.1760	0.0000	1 + 2 108.7
	UNII MIMO	2	0.586	0.0990	0.1570	0.0000	
12	GSM850+BT Ant.1	1	0.623	-0.0080	0.1760	0.0000	1 + 2 108.7
	UNII MIMO+DTS Ant.2	2	0.935	0.0990	0.1570	0.0000	
13	GSM 1900	1	0.547	-0.0300	0.1600	0.0000	1 + 2 134.0
	UNII MIMO	2	0.797	0.1040	0.1570	0.0000	
14	GSM1900+BT Ant.1	1	0.456	-0.0040	0.1680	0.0000	1 + 2 108.6
	UNII MIMO	2	0.797	0.1040	0.1570	0.0000	
15	GSM 1900	1	0.547	-0.0300	0.1600	0.0000	1 + 2 126.1
	UNII MIMO+BT Ant.2	2	1.230	0.0960	0.1560	0.0000	
16	GSM1900+BT Ant.1	1	0.456	-0.0040	0.1680	0.0000	1 + 2 104.2
	UNII MIMO	2	0.614	0.0996	0.1566	0.0000	
17	GSM 1900	1	0.547	-0.0300	0.1600	0.0000	1 + 2 129.1
	UNII MIMO+BT Ant.2	2	1.160	0.0990	0.1544	0.0000	
18	GSM 1900	1	0.547	-0.0300	0.1600	0.0000	1 + 2 67.4
	DTS Ant.1	2	0.206	-0.0972	0.1550	0.0000	
19	UNII MIMO	3	0.586	0.0990	0.1570	0.0000	2 + 3 129.0
	GSM850+BT Ant.1	1	0.456	-0.0040	0.1680	0.0000	
20	UNII MIMO+DTS Ant.2	2	0.935	0.0990	0.1570	0.0000	1 + 2 103.6
	WCDMA B2	1	0.712	-0.0285	0.1590	0.0000	
21	UNII MIMO	2	0.797	0.1040	0.1570	0.0000	1 + 2 132.5
	WCDMA B2+BT Ant.1	1	0.645	-0.0360	0.1640	0.0000	
22	UNII MIMO	2	0.797	0.1040	0.1570	0.0000	1 + 2 140.2
	WCDMA B2	1	0.712	-0.0285	0.1590	0.0000	
23	UNII MIMO+BT Ant.2	2	1.230	0.0960	0.1560	0.0000	1 + 2 124.5
	WCDMA B2+BT Ant.1	1	0.645	-0.0360	0.1640	0.0000	
24	UNII MIMO	2	0.614	0.0996	0.1566	0.0000	1 + 2 135.8
	WCDMA B2	1	0.712	-0.0285	0.1590	0.0000	
25	UNII MIMO+BT Ant.2	2	1.160	0.0990	0.1544	0.0000	1 + 2 127.6
	WCDMA B2	1	0.712	-0.0285	0.1590	0.0000	
26	WCDMA B2	1	0.712	-0.0285	0.1590	0.0000	1 + 2 68.8
	DTS Ant.1	2	0.206	-0.0972	0.1550	0.0000	
27	UNII MIMO	3	0.437	0.1040	0.1570	0.0000	1 + 3 132.5
	WCDMA B2+BT Ant.1	1	0.645	-0.0360	0.1640	0.0000	
28	UNII MIMO+DTS Ant.2	2	0.819	0.1040	0.1560	0.0000	2 + 3 201.2
	WCDMA B2	1	0.712	-0.0285	0.1590	0.0000	
29	UNII MIMO	2	0.797	0.1040	0.1570	0.0000	1 + 2 140.2
	WCDMA B2+DTS MIMO	1	0.657	-0.0360	0.1640	0.0000	
30	UNII MIMO	2	0.586	0.0990	0.1570	0.0000	1 + 2 135.2
	WCDMA B2+BT Ant.1	1	0.645	-0.0360	0.1640	0.0000	
31	UNII MIMO+DTS Ant.2	2	0.935	0.0990	0.1570	0.0000	1 + 2 135.2
	WCDMA B4	1	0.666	-0.0285	0.1600	0.0000	
32	UNII MIMO	2	0.797	0.1040	0.1570	0.0000	1 + 2 132.5
	WCDMA B4+BT Ant.1	1	0.573	-0.0360	0.1640	0.0000	
33	UNII MIMO	2	0.797	0.1040	0.1570	0.0000	1 + 2 140.2
	WCDMA B4	1	0.666	-0.0285	0.1600	0.0000	
34	UNII MIMO+BT Ant.2	2	1.230	0.0960	0.1560	0.0000	1 + 2 124.6
	WCDMA B4	1	0.666	-0.0285	0.1600	0.0000	
35	UNII MIMO+BT Ant.1	1	0.573	-0.0360	0.1640	0.0000	1 + 2 124.6
	WCDMA B4+BT Ant.1	1	0.573	-0.0360	0.1640	0.0000	
36	UNII MIMO	2	0.614	0.0996	0.1566	0.0000	1 + 2 135.8
	WCDMA B4+BT Ant.1	1	0.573	-0.0360	0.1640	0.0000	
37	UNII MIMO	2	0.614	0.0996	0.1566	0.0000	1 + 2 135.8
	WCDMA B4	1	0.666	-0.0285	0.1600	0.0000	
38	UNII MIMO+BT Ant.2	2	1.160	0.0990	0.1544	0.0000	1 + 2 127.6
	WCDMA B4	1	0.666	-0.0285	0.1600	0.0000	
39	UNII MIMO+BT Ant.1	1	0.573	-0.0360	0.1640	0.0000	1 + 2 140.2
	WCDMA B4+BT Ant.1	1	0.573	-0.0360	0.1640	0.0000	
40	UNII MIMO+DTS Ant.2	2	0.819	0.1040	0.1560	0.0000	1 + 2 140.2
	WCDMA B4	1	0.666	-0.0285	0.1600	0.0000	
41	UNII MIMO	3	0.586	0.0990	0.1570	0.0000	1 + 2 68.9
	DTS Ant.1	2	0.206	-0.0972	0.1550	0.0000	
42	UNII MIMO	3	0.586	0.0990	0.1570	0.0000	1 + 3 127.5
	WCDMA B4+DTS MIMO	1	0.798	-0.0040	0.1640	0.0000	
43	UNII MIMO	2	0.586	0.0990	0.1570	0.0000	2 + 3 196.2
	WCDMA B4+DTS MIMO	1	0.798	-0.0040	0.1640	0.0000	
44	UNII MIMO	2	0.586	0.0990	0.1570	0.0000	1 + 2 103.2
	WCDMA B4+BT Ant.1	1	0.573	-0.0360	0.1640	0.0000	
45	UNII MIMO+DTS Ant.2	2	0.935	0.0990	0.1570	0.0000	1 + 2 135.2
	WCDMA B5	1	0.799	-0.0030	0.1690	0.0000	
46	UNII MIMO	2	0.797	0.1040	0.1570	0.0000	1 + 2 107.7
	WCDMA B5	1	0.799	-0.0030	0.1690	0.0000	
47	UNII MIMO	2	0.797	0.1040	0.1570	0.0000	1 + 2 107.7
	WCDMA B5+BT Ant.1	1	0.845	-0.0040	0.1640	0.0000	
48	UNII MIMO	2	0.797	0.1040	0.1570	0.0000	1 + 2 108.2
	WCDMA B5+BT Ant.1	1	0.845	-0.0040	0.1640	0.0000	

Calculation results of separation distance between Peak SAR locations of each one pair. (Continued)

Figure	Mode		SAR	X	Y	Z	d: Calculated distance (mm)	
			W/kg	m	m	m		
41	WCDMA B5	1	0.799	-0.0030	0.1690	0.0000	1 + 2	99.8
	UNII MIMO+BT Ant.2	2	1.230	0.0960	0.1560	0.0000		
42	WCDMA B5	1	0.799	-0.0030	0.1690	0.0000	1 + 2	103.3
	UNII MIMO	2	0.614	0.0996	0.1566	0.0000		
43	WCDMA B5+BT Ant.1	1	0.845	-0.0040	0.1640	0.0000	1 + 2	103.9
	UNII MIMO	2	0.614	0.0996	0.1566	0.0000		
44	WCDMA B5	1	0.799	-0.0030	0.1690	0.0000	1 + 2	103.0
	UNII MIMO+BT Ant.2	2	1.160	0.0990	0.1544	0.0000		
45	WCDMA B5+DTS Ant.1	1	0.845	-0.0040	0.1640	0.0000	1 + 2	108.2
	UNII MIMO	2	0.437	0.1040	0.1570	0.0000		
46	WCDMA B5+DTS MIMO	1	0.856	-0.0040	0.1640	0.0000	1 + 2	108.2
	UNII MIMO	2	0.437	0.1040	0.1570	0.0000		
47	WCDMA B5+DTS Ant.1	1	0.845	-0.0040	0.1640	0.0000	1 + 2	108.3
	UNII MIMO+DTS Ant.2	2	0.819	0.1040	0.1560	0.0000		
48	WCDMA B5+DTS Ant.1	1	0.845	-0.0040	0.1640	0.0000	1 + 2	103.2
	UNII MIMO	2	0.586	0.0990	0.1570	0.0000		
49	WCDMA B5+DTS MIMO	1	0.856	-0.0040	0.1640	0.0000	1 + 2	103.2
	UNII MIMO	2	0.586	0.0990	0.1570	0.0000		
50	WCDMA B5+DTS Ant.1	1	0.845	-0.0040	0.1640	0.0000	1 + 2	103.2
	UNII MIMO+DTS Ant.2	2	0.935	0.0990	0.1570	0.0000		
51	LTE B12	1	0.714	-0.0040	0.1650	0.0000	1 + 2	108.3
	UNII MIMO	2	0.797	0.1040	0.1570	0.0000		
52	LTE B12+BT Ant.1	1	0.522	0.0040	0.1680	0.0000	1 + 2	100.6
	UNII MIMO	2	0.797	0.1040	0.1570	0.0000		
53	LTE B12	1	0.714	-0.0040	0.1650	0.0000	1 + 2	100.4
	UNII MIMO+BT Ant.2	2	1.230	0.0960	0.1560	0.0000		
54	LTE B12+BT Ant.1	1	0.522	0.0040	0.1680	0.0000	1 + 2	96.3
	UNII MIMO	2	0.614	0.0996	0.1566	0.0000		
55	LTE B12	1	0.714	-0.0040	0.1650	0.0000	1 + 2	103.5
	UNII MIMO+BT Ant.2	2	1.160	0.0990	0.1544	0.0000		
56	LTE B12+DTS Ant.1	1	0.522	0.0040	0.1680	0.0000	1 + 2	100.6
	UNII MIMO	2	0.437	0.1040	0.1570	0.0000		
57	LTE B12+BT Ant.1	1	0.522	0.0040	0.1680	0.0000	1 + 2	100.7
	UNII MIMO+DTS Ant.2	2	0.819	0.1040	0.1560	0.0000		
58	LTE B12+DTS Ant.1	1	0.522	0.0040	0.1680	0.0000	1 + 2	95.6
	UNII MIMO	2	0.586	0.0990	0.1570	0.0000		
59	LTE B12+DTS MIMO	1	0.528	-0.0040	0.1680	0.0000	1 + 2	103.6
	UNII MIMO	2	0.586	0.0990	0.1570	0.0000		
60	LTE B12+BT Ant.1	1	0.522	0.0040	0.1680	0.0000	1 + 2	95.6
	UNII MIMO+DTS Ant.2	2	0.935	0.0990	0.1570	0.0000		
61	LTE B13	1	0.775	-0.0045	0.1680	0.0000	1 + 2	109.1
	UNII MIMO	2	0.797	0.1040	0.1570	0.0000		
62	LTE B13+BT Ant.1	1	0.673	-0.0080	0.1720	0.0000	1 + 2	113.0
	UNII MIMO	2	0.797	0.1040	0.1570	0.0000		
63	LTE B13	1	0.775	-0.0045	0.1680	0.0000	1 + 2	101.2
	UNII MIMO+BT Ant.2	2	1.230	0.0960	0.1560	0.0000		
64	LTE B13	1	0.775	-0.0045	0.1680	0.0000	1 + 2	104.7
	UNII MIMO	2	0.614	0.0996	0.1566	0.0000		
65	LTE B13+BT Ant.1	1	0.673	-0.0080	0.1720	0.0000	1 + 2	108.7
	UNII MIMO	2	0.614	0.0996	0.1566	0.0000		
66	LTE B13	1	0.775	-0.0045	0.1680	0.0000	1 + 2	104.4
	UNII MIMO+BT Ant.2	2	1.160	0.0990	0.1544	0.0000		
67	LTE B13+DTS Ant.1	1	0.673	-0.0080	0.1720	0.0000	1 + 2	113.0
	UNII MIMO	2	0.437	0.1040	0.1570	0.0000		
68	LTE B13+DTS MIMO	1	0.681	-0.0080	0.1680	0.0000	1 + 2	112.5
	UNII MIMO	2	0.437	0.1040	0.1570	0.0000		
69	LTE B13+BT Ant.1	1	0.673	-0.0080	0.1720	0.0000	1 + 2	113.1
	UNII MIMO+DTS Ant.2	2	0.819	0.1040	0.1560	0.0000		
70	LTE B13+DTS Ant.1	1	0.673	-0.0080	0.1720	0.0000	1 + 2	108.0
	UNII MIMO	2	0.586	0.0990	0.1570	0.0000		
71	LTE B13+DTS MIMO	1	0.681	-0.0080	0.1680	0.0000	1 + 2	107.6
	UNII MIMO	2	0.586	0.0990	0.1570	0.0000		
72	LTE B13+BT Ant.1	1	0.673	-0.0080	0.1720	0.0000	1 + 2	108.0
	UNII MIMO+DTS Ant.2	2	0.935	0.0990	0.1570	0.0000		
73	LTE B25	1	0.850	-0.0315	0.1590	0.0000	1 + 2	132.5
	BT Ant.2	2	0.491	0.1010	0.1600	0.0000		
74	LTE B25	1	0.850	-0.0315	0.1590	0.0000	1 + 2	135.5
	UNII MIMO	2	0.797	0.1040	0.1570	0.0000		
75	LTE B25+BT Ant.1	1	0.982	-0.0360	0.1600	0.0000	1 + 2	140.0
	UNII MIMO	2	0.797	0.1040	0.1570	0.0000		
76	LTE B25	1	0.850	-0.0315	0.1590	0.0000	1 + 2	127.5
	UNII MIMO+BT Ant.2	2	1.230	0.0960	0.1560	0.0000		
77	LTE B25	1	0.850	-0.0315	0.1590	0.0000	1 + 2	131.1
	UNII MIMO	2	0.614	0.0996	0.1566	0.0000		
78	LTE B25+BT Ant.1	1	0.982	-0.0360	0.1600	0.0000	1 + 2	135.6
	UNII MIMO	2	0.614	0.0996	0.1566	0.0000		
79	LTE B25	1	0.850	-0.0315	0.1590	0.0000	1 + 2	130.6
	UNII MIMO+BT Ant.2	2	1.160	0.0990	0.1544	0.0000		
80	LTE B25	1	0.850	-0.0315	0.1590	0.0000	1 + 2	65.8
	DTS Ant.1	2	0.206	-0.0972	0.1550	0.0000	1 + 3	135.5
	UNII MIMO	3	0.437	0.1040	0.1570	0.0000	2 + 3	201.2

Calculation results of separation distance between Peak SAR locations of each one pair. (Continued)

Figure	Mode		SAR	X	Y	Z	d: Calculated distance (mm)	
			W/kg	m	m	m		
81	LTE B25+DTS MIMO	1	0.992	-0.0360	0.1600	0.0000	1 + 2	140.0
	UNII MIMO	2	0.437	0.1040	0.1570	0.0000		
82	LTE B25+BT Ant.1	1	0.982	-0.0360	0.1600	0.0000	1 + 2	140.1
	UNII MIMO+DTS Ant.2	2	0.819	0.1040	0.1560	0.0000		
83	LTE B25	1	0.850	-0.0315	0.1590	0.0000	1 + 2	65.8
	DTS Ant.1	2	0.206	-0.0972	0.1550	0.0000	1 + 3	130.5
	UNII MIMO	3	0.586	0.0990	0.1570	0.0000	2 + 3	196.2
84	LTE B25+DTS MIMO	1	0.992	-0.0360	0.1600	0.0000	1 + 2	135.0
	UNII MIMO	2	0.586	0.0990	0.1570	0.0000		
85	LTE B25+BT Ant.1	1	0.982	-0.0360	0.1600	0.0000	1 + 2	135.0
	UNII MIMO+DTS Ant.2	2	0.935	0.0990	0.1570	0.0000		
86	LTE B26+BT Ant.1	1	0.859	0.0000	0.1680	0.0000	1 + 2	97.5
	DTS Ant.2	2	0.287	0.0972	0.1600	0.0000		
87	LTE B26+BT Ant.1	1	0.859	0.0000	0.1680	0.0000	1 + 2	101.3
	BT Ant.2	2	0.491	0.1010	0.1600	0.0000		
88	LTE B26	1	0.996	-0.0015	0.1710	0.0000	1 + 2	106.4
	UNII MIMO	2	0.797	0.1040	0.1570	0.0000		
89	LTE B26+BT Ant.1	1	0.859	0.0000	0.1680	0.0000	1 + 2	104.6
	UNII MIMO	2	0.797	0.1040	0.1570	0.0000		
90	LTE B26	1	0.996	-0.0015	0.1710	0.0000	1 + 2	98.6
	UNII MIMO+BT Ant.2	2	1.230	0.0960	0.1560	0.0000		
91	LTE B26	1	0.996	-0.0015	0.1710	0.0000	1 + 2	102.1
	UNII MIMO	2	0.614	0.0996	0.1566	0.0000		
92	LTE B26+BT Ant.1	1	0.859	0.0000	0.1680	0.0000	1 + 2	100.2
	UNII MIMO	2	0.614	0.0996	0.1566	0.0000		
93	LTE B26	1	0.996	-0.0015	0.1710	0.0000	1 + 2	101.9
	UNII MIMO+BT Ant.2	2	1.160	0.0990	0.1544	0.0000		
94	LTE B26+DTS Ant.1	1	0.859	0.0000	0.1680	0.0000	1 + 2	104.6
	UNII MIMO	2	0.437	0.1040	0.1570	0.0000		
95	LTE B26+DTS MIMO	1	0.871	-0.0040	0.1680	0.0000	1 + 2	108.6
	UNII MIMO	2	0.437	0.1040	0.1570	0.0000		
96	LTE B26+BT Ant.1	1	0.859	0.0000	0.1680	0.0000	1 + 2	104.7
	UNII MIMO+DTS Ant.2	2	0.819	0.1040	0.1560	0.0000		
97	LTE B26+DTS Ant.1	1	0.859	0.0000	0.1680	0.0000	1 + 2	99.6
	UNII MIMO	2	0.586	0.0990	0.1570	0.0000		
98	LTE B26+DTS MIMO	1	0.871	-0.0040	0.1680	0.0000	1 + 2	103.6
	UNII MIMO	2	0.586	0.0990	0.1570	0.0000		
99	LTE B26+BT Ant.1	1	0.859	0.0000	0.1680	0.0000	1 + 2	99.6
	UNII MIMO+DTS Ant.2	2	0.935	0.0990	0.1570	0.0000		
100	LTE B41	1	1.065	-0.0336	0.1630	0.0000	1 + 2	66.6
	DTS MIMO	2	0.304	-0.0998	0.1560	0.0000		
101	LTE B41+BT Ant.1	1	1.060	-0.0320	0.1640	0.0000	1 + 2	129.3
	DTS Ant.2	2	0.287	0.0972	0.1600	0.0000		
102	LTE B41	1	1.065	-0.0336	0.1630	0.0000	1 + 2	134.6
	BT Ant.2	2	0.491	0.1010	0.1600	0.0000		
103	LTE B41	1	1.065	-0.0336	0.1630	0.0000	1 + 2	137.7
	UNII MIMO	2	0.797	0.1040	0.1570	0.0000		
104	LTE B41+BT Ant.1	1	1.060	-0.0320	0.1640	0.0000	1 + 2	136.2
	UNII MIMO	2	0.797	0.1040	0.1570	0.0000		
105	LTE B41	1	1.065	-0.0336	0.1630	0.0000	1 + 2	129.8
	UNII MIMO+BT Ant.2	2	1.230	0.0960	0.1560	0.0000		
106	LTE B41	1	1.065	-0.0336	0.1630	0.0000	1 + 2	133.4
	UNII MIMO	2	0.614	0.0996	0.1566	0.0000		
107	LTE B41+BT Ant.1	1	1.060	-0.0320	0.1640	0.0000	1 + 2	131.8
	UNII MIMO	2	0.614	0.0996	0.1566	0.0000		
108	LTE B41	1	1.065	-0.0336	0.1630	0.0000	1 + 2	132.9
	UNII MIMO+BT Ant.2	2	1.160	0.0990	0.1544	0.0000		
109	LTE B41+DTS Ant.1	1	1.050	-0.0320	0.1640	0.0000	1 + 2	136.2
	UNII MIMO	2	0.437	0.1040	0.1570	0.0000		
110	LTE B41+DTS MIMO	1	1.070	-0.0320	0.1640	0.0000	1 + 2	136.2
	UNII MIMO	2	0.437	0.1040	0.1570	0.0000		
111	LTE B41+BT Ant.1	1	1.060	-0.0320	0.1640	0.0000	1 + 2	136.2
	UNII MIMO+DTS Ant.2	2	0.819	0.1040	0.1560	0.0000		
112	LTE B41+DTS Ant.1	1	1.050	-0.0320	0.1640	0.0000	1 + 2	131.2
	UNII MIMO	2	0.586	0.0990	0.1570	0.0000		
113	LTE B41+DTS MIMO	1	1.070	-0.0320	0.1640	0.0000	1 + 2	131.2
	UNII MIMO	2	0.586	0.0990	0.1570	0.0000		
114	LTE B41+BT Ant.1	1	1.06	-0.0320	0.1640	0.0000	1 + 2	131.2
	UNII MIMO+DTS Ant.2	2	0.935	0.0990	0.1570	0.0000		
115	LTE B66	1	0.707	-0.0255	0.1600	0.0000	1 + 2	129.5
	UNII MIMO	2	0.797	0.1040	0.1570	0.0000		
116	LTE B66+BT Ant.1	1	0.843	-0.0360	0.1640	0.0000	1 + 2	140.2
	UNII MIMO	2	0.797	0.1040	0.1570	0.0000		
117	LTE B66	1	0.707	-0.0255	0.1600	0.0000	1 + 2	121.6
	UNII MIMO+BT Ant.2	2	1.230	0.0960	0.1560	0.0000		
118	LTE B66	1	0.707	-0.0255	0.1600	0.0000	1 + 2	125.1
	UNII MIMO	2	0.614	0.0996	0.1566	0.0000		
119	LTE B66+BT Ant.1	1	0.843	-0.0360	0.1640	0.0000	1 + 2	135.8
	UNII MIMO	2	0.614	0.0996	0.1566	0.0000		
120	LTE B66	1	0.707	-0.0255	0.1600	0.0000	1 + 2	124.6
	UNII MIMO+BT Ant.2	2	1.160	0.0990	0.1544	0.0000		

Calculation results of separation distance between Peak SAR locations of each one pair. (Continued)

Figure	Mode		SAR	X	Y	Z	d: Calculated distance (mm)	
			W/kg	m	m	m		
121	LTE B66	1	0.707	-0.0255	0.1600	0.0000	1 + 2	71.9
	DTS Ant.1	2	0.206	-0.0972	0.1550	0.0000	1 + 3	129.5
	UNII MIMO	3	0.437	0.1040	0.1570	0.0000	2 + 3	201.2
122	LTE B66+BT Ant.1	1	0.843	-0.0360	0.1640	0.0000	1 + 2	140.2
	UNII MIMO+DTS Ant.2	2	0.819	0.1040	0.1560	0.0000		
123	LTE B66	1	0.707	-0.0255	0.1600	0.0000	1 + 2	71.9
	DTS Ant.1	2	0.206	-0.0972	0.1550	0.0000	1 + 3	124.5
	UNII MIMO	3	0.586	0.0990	0.1570	0.0000	2 + 3	196.2
124	LTE B66+DTS MIMO	1	0.854	-0.0360	0.1640	0.0000	1 + 2	135.2
	UNII MIMO	2	0.586	0.0990	0.1570	0.0000		
125	LTE B66+BT Ant.1	1	0.843	-0.0360	0.1640	0.0000	1 + 2	135.2
	UNII MIMO+DTS Ant.2	2	0.935	0.0990	0.1570	0.0000		
126	NR Bn5	1	0.820	-0.0090	0.1710	0.0000	1 + 2	113.9
	UNII MIMO	2	0.797	0.1040	0.1570	0.0000		
127	NR Bn5+BT Ant.1	1	0.907	0.0000	0.1640	0.0000	1 + 2	104.2
	UNII MIMO	2	0.797	0.1040	0.1570	0.0000		
128	NR Bn5	1	0.820	-0.0090	0.1710	0.0000	1 + 2	106.1
	UNII MIMO+BT Ant.2	2	1.230	0.0960	0.1560	0.0000		
129	NR Bn5	1	0.820	-0.0090	0.1710	0.0000	1 + 2	109.5
	UNII MIMO	2	0.614	0.0996	0.1566	0.0000		
130	NR Bn5+BT Ant.1	1	0.907	0.0000	0.1640	0.0000	1 + 2	99.9
	UNII MIMO	2	0.614	0.0996	0.1566	0.0000		
131	NR Bn5	1	0.820	-0.0090	0.1710	0.0000	1 + 2	109.3
	UNII MIMO+BT Ant.2	2	1.160	0.0990	0.1544	0.0000		
132	NR Bn5+DTS Ant.1	1	0.907	0.0000	0.1640	0.0000	1 + 2	104.2
	UNII MIMO	2	0.437	0.1040	0.1570	0.0000		
133	NR Bn5+DTS MIMO	1	0.916	-0.0040	0.1640	0.0000	1 + 2	108.2
	UNII MIMO	2	0.437	0.1040	0.1570	0.0000		
134	NR Bn5+BT Ant.1	1	0.907	0.0000	0.1640	0.0000	1 + 2	104.3
	UNII MIMO+DTS Ant.2	2	0.819	0.1040	0.1560	0.0000		
135	NR Bn5+DTS Ant.1	1	0.907	0.0000	0.1640	0.0000	1 + 2	99.2
	UNII MIMO	2	0.586	0.0990	0.1570	0.0000		
136	NR Bn5+DTS MIMO	1	0.916	-0.0040	0.1640	0.0000	1 + 2	103.2
	UNII MIMO	2	0.586	0.0990	0.1570	0.0000		
137	NR Bn5+BT Ant.1	1	0.907	0.0000	0.1640	0.0000	1 + 2	99.2
	UNII MIMO+DTS Ant.2	2	0.935	0.0990	0.1570	0.0000		
138	NR Bn6	1	0.702	-0.0315	0.1620	0.0000	1 + 2	135.6
	UNII MIMO	2	0.797	0.1040	0.1570	0.0000		
139	NR Bn6+BT Ant.1	1	0.733	-0.0320	0.1640	0.0000	1 + 2	136.2
	UNII MIMO	2	0.797	0.1040	0.1570	0.0000		
140	NR Bn6	1	0.702	-0.0315	0.1620	0.0000	1 + 2	127.6
	UNII MIMO+BT Ant.2	2	1.230	0.0960	0.1560	0.0000		
141	NR Bn6	1	0.702	-0.0315	0.1620	0.0000	1 + 2	131.2
	UNII MIMO	2	0.614	0.0996	0.1566	0.0000		
142	NR Bn6+BT Ant.1	1	0.733	-0.0320	0.1640	0.0000	1 + 2	131.8
	UNII MIMO	2	0.614	0.0996	0.1566	0.0000		
143	NR Bn6	1	0.702	-0.0315	0.1620	0.0000	1 + 2	130.7
	UNII MIMO+BT Ant.2	2	1.160	0.0990	0.1544	0.0000		
144	NR Bn6	1	0.702	-0.0315	0.1620	0.0000	1 + 2	66.1
	DTS Ant.1	2	0.206	-0.0972	0.1550	0.0000	1 + 3	135.6
	UNII MIMO	3	0.437	0.1040	0.1570	0.0000	2 + 3	201.2
145	NR Bn6+BT Ant.1	1	0.733	-0.0320	0.1640	0.0000	1 + 2	136.2
	UNII MIMO+DTS Ant.2	2	0.819	0.1040	0.1560	0.0000		
146	NR Bn6	1	0.702	-0.0315	0.1620	0.0000	1 + 2	66.1
	DTS Ant.1	2	0.206	-0.0972	0.1550	0.0000	1 + 3	130.6
	UNII MIMO	3	0.586	0.0990	0.1570	0.0000	2 + 3	196.2
147	NR Bn6+DTS MIMO	1	0.743	-0.0320	0.1640	0.0000	1 + 2	131.2
	UNII MIMO	2	0.586	0.0990	0.1570	0.0000		
148	NR Bn6+BT Ant.1	1	0.907	-0.0320	0.1640	0.0000	1 + 2	131.2
	UNII MIMO+DTS Ant.2	2	0.935	0.0990	0.1570	0.0000		
149	LTE B2+NR Bn5	1	0.984	-0.0150	0.1650	0.0000	1 + 2	85.3
	DTS MIMO	2	0.304	-0.0998	0.1560	0.0000		
150	LTE B2+NR Bn5	1	0.984	-0.0150	0.1650	0.0000	1 + 2	112.3
	DTS Ant.2	2	0.287	0.0972	0.1600	0.0000	1 + 3	86.1
	BT Ant.1	3	0.187	-0.1010	0.1610	0.0000	2 + 3	198.2
151	LTE B2+NR Bn5	1	0.984	-0.0150	0.1650	0.0000	1 + 2	119.3
	UNII MIMO	2	0.797	0.1040	0.1570	0.0000		
152	LTE B2+NR Bn5	1	0.984	-0.0150	0.1650	0.0000	1 + 2	86.1
	BT Ant.1	2	0.187	-0.1010	0.1610	0.0000	1 + 3	119.3
	UNII MIMO	3	0.797	0.1040	0.1570	0.0000	2 + 3	205.0
153	LTE B2+NR Bn5	1	0.984	-0.0150	0.1650	0.0000	1 + 2	111.4
	UNII MIMO+BT Ant.2	2	1.230	0.0960	0.1560	0.0000		
154	LTE B2+NR Bn5	1	0.600	-0.0300	0.1600	0.0000	1 + 2	134.0
	UNII MIMO	2	0.797	0.1040	0.1570	0.0000		
155	LTE B2+NR Bn5	1	0.600	-0.0300	0.1600	0.0000	1 + 2	71.0
	BT Ant.1	2	0.187	-0.1010	0.1610	0.0000	1 + 3	134.0
	UNII MIMO	3	0.797	0.1040	0.1570	0.0000	2 + 3	205.0
156	LTE B2+NR Bn5	1	0.600	-0.0300	0.1600	0.0000	1 + 2	126.1
	UNII MIMO+BT Ant.2	2	1.230	0.0960	0.1560	0.0000		
157	LTE B2+NR Bn5	1	0.984	-0.0150	0.1650	0.0000	1 + 2	114.9
	UNII MIMO	2	0.614	0.0996	0.1566	0.0000		
158	LTE B2+NR Bn5	1	0.984	-0.0150	0.1650	0.0000	1 + 2	86.1
	BT Ant.1	2	0.187	-0.1010	0.1610	0.0000	1 + 3	114.9
	UNII MIMO	3	0.614	0.0996	0.1566	0.0000	2 + 3	200.6
159	LTE B2+NR Bn5	1	0.984	-0.0150	0.1650	0.0000	1 + 2	114.5
	UNII MIMO+BT Ant.2	2	1.160	0.0990	0.1544	0.0000		
160	LTE B2+NR Bn5	1	0.600	-0.0300	0.1600	0.0000	1 + 2	129.6
	UNII MIMO	2	0.614	0.0996	0.1566	0.0000		

Calculation results of separation distance between Peak SAR locations of each one pair. (Continued)

Figure	Mode		SAR	X	Y	Z	d: Calculated distance (mm)	
			W/kg	m	m	m		
161	LTE B2+NR Bn5	1	0.6	-0.0300	0.1600	0.0000	1 + 2	71.0
	BT Ant.1	2	0.187	-0.1010	0.1610	0.0000	1 + 3	129.6
	UNII MIMO	3	0.614	0.0996	0.1566	0.0000	2 + 3	200.6
162	LTE B2+NR Bn5	1	0.6	-0.0300	0.1600	0.0000	1 + 2	129.1
	UNII MIMO+BT Ant.2	2	1.160	0.0990	0.1544	0.0000		
163	LTE B2+NR Bn5	1	0.984	-0.0150	0.1650	0.0000	1 + 2	82.8
	DTS Ant.1	2	0.206	-0.0972	0.1550	0.0000	1 + 3	119.3
	UNII MIMO	3	0.437	0.1040	0.1570	0.0000	2 + 3	201.2
164	LTE B2+NR Bn5	1	0.984	-0.0150	0.1650	0.0000	1 + 2	82.8
	DTS MIMO	2	0.148	-0.0972	0.1550	0.0000	1 + 3	119.3
	UNII MIMO	3	0.437	0.1040	0.1570	0.0000	2 + 3	201.2
165	LTE B2+NR Bn5	1	0.984	-0.0150	0.1650	0.0000	1 + 2	119.3
	UNII MIMO+DTS Ant.2	2	0.819	0.1040	0.1560	0.0000	1 + 3	86.1
	BT Ant.1	3	0.187	-0.1010	0.1610	0.0000	2 + 3	205.1
166	LTE B2+NR Bn5	1	0.6	-0.0300	0.1600	0.0000	1 + 2	67.4
	DTS Ant.1	2	0.206	-0.0972	0.1550	0.0000	1 + 3	134.0
	UNII MIMO	3	0.437	0.1040	0.1570	0.0000	2 + 3	201.2
167	LTE B2+NR Bn5	1	0.6	-0.0300	0.1600	0.0000	1 + 2	67.4
	DTS MIMO	2	0.148	-0.0972	0.1550	0.0000	1 + 3	134.0
	UNII MIMO	3	0.437	0.1040	0.1570	0.0000	2 + 3	201.2
168	LTE B2+NR Bn5	1	0.6	-0.0300	0.1600	0.0000	1 + 2	134.1
	UNII MIMO+DTS Ant.2	2	0.819	0.1040	0.1560	0.0000	1 + 3	71.0
	BT Ant.1	3	0.187	-0.1010	0.1610	0.0000	2 + 3	205.1
169	LTE B2+NR Bn5	1	0.984	-0.0150	0.1650	0.0000	1 + 2	82.8
	DTS Ant.1	2	0.206	-0.0972	0.1550	0.0000	1 + 3	114.3
	UNII MIMO	3	0.586	0.0990	0.1570	0.0000	2 + 3	196.2
170	LTE B2+NR Bn5	1	0.984	-0.0150	0.1650	0.0000	1 + 2	82.8
	DTS MIMO	2	0.148	-0.0972	0.1550	0.0000	1 + 3	114.3
	UNII MIMO	3	0.586	0.0990	0.1570	0.0000	2 + 3	196.2
171	LTE B2+NR Bn5	1	0.984	-0.0150	0.1650	0.0000	1 + 2	114.3
	UNII MIMO+DTS Ant.2	2	0.935	0.0990	0.1570	0.0000	1 + 3	86.1
	BT Ant.1	3	0.187	-0.1010	0.1610	0.0000	2 + 3	200.0
172	LTE B2+NR Bn5	1	0.6	-0.0300	0.1600	0.0000	1 + 2	67.4
	DTS Ant.1	2	0.206	-0.0972	0.1550	0.0000	1 + 3	129.0
	UNII MIMO	3	0.586	0.0990	0.1570	0.0000	2 + 3	196.2
173	LTE B2+NR Bn5	1	0.6	-0.0300	0.1600	0.0000	1 + 2	67.4
	DTS MIMO	2	0.148	-0.0972	0.1550	0.0000	1 + 3	129.0
	UNII MIMO	3	0.586	0.0990	0.1570	0.0000	2 + 3	196.2
174	LTE B2+NR Bn5	1	0.6	-0.0300	0.1600	0.0000	1 + 2	129.0
	UNII MIMO+DTS Ant.2	2	0.935	0.0990	0.1570	0.0000	1 + 3	71.0
	BT Ant.1	3	0.187	-0.1010	0.1610	0.0000	2 + 3	200.0
175	LTE B66+NR Bn5	1	1.03	-0.0200	0.1650	0.0000	1 + 2	80.3
	DTS MIMO	2	0.304	-0.0998	0.1560	0.0000		
	LTE B66+NR Bn5	1	1.03	-0.0200	0.1650	0.0000	1 + 2	117.3
176	DTS Ant.2	2	0.287	0.0972	0.1600	0.0000	1 + 3	81.1
	BT Ant.1	3	0.187	-0.1010	0.1610	0.0000	2 + 3	198.2
	LTE B66+NR Bn5	1	1.03	-0.0200	0.1650	0.0000	1 + 2	124.3
177	UNII MIMO	2	0.797	0.1040	0.1570	0.0000		
	LTE B66+NR Bn5	1	1.03	-0.0200	0.1650	0.0000	1 + 2	81.1
	BT Ant.1	2	0.187	-0.1010	0.1610	0.0000	1 + 3	124.3
178	UNII MIMO	3	0.797	0.1040	0.1570	0.0000	2 + 3	205.0
	LTE B66+NR Bn5	1	1.03	-0.0200	0.1650	0.0000	1 + 2	116.3
	UNII MIMO+BT Ant.2	2	1.230	0.0960	0.1560	0.0000		
180	LTE B66+NR Bn5	1	0.46	-0.0300	0.1650	0.0000	1 + 2	134.2
	UNII MIMO	2	0.797	0.1040	0.1570	0.0000		
	LTE B66+NR Bn5	1	0.46	-0.0300	0.1650	0.0000	1 + 2	71.1
181	BT Ant.1	2	0.187	-0.1010	0.1610	0.0000	1 + 3	134.2
	UNII MIMO	3	0.797	0.1040	0.1570	0.0000	2 + 3	205.0
	LTE B66+NR Bn5	1	0.46	-0.0300	0.1650	0.0000	1 + 2	126.3
182	UNII MIMO+BT Ant.2	2	1.230	0.0960	0.1560	0.0000		
	LTE B66+NR Bn5	1	1.03	-0.0200	0.1650	0.0000	1 + 2	119.9
183	UNII MIMO	2	0.614	0.0996	0.1566	0.0000		
	LTE B66+NR Bn5	1	1.03	-0.0200	0.1650	0.0000	1 + 2	81.1
	BT Ant.1	2	0.187	-0.1010	0.1610	0.0000	1 + 3	119.9
184	UNII MIMO	3	0.614	0.0996	0.1566	0.0000	2 + 3	200.6
	LTE B66+NR Bn5	1	1.03	-0.0200	0.1650	0.0000	1 + 2	119.5
	UNII MIMO+BT Ant.2	2	1.160	0.0990	0.1544	0.0000		
185	LTE B66+NR Bn5	1	0.46	-0.0300	0.1650	0.0000	1 + 2	71.1
	BT Ant.1	2	0.187	-0.1010	0.1610	0.0000	1 + 3	129.9
	UNII MIMO	3	0.614	0.0996	0.1566	0.0000	2 + 3	200.6
187	LTE B66+NR Bn5	1	0.46	-0.0300	0.1650	0.0000	1 + 2	129.4
	UNII MIMO+BT Ant.2	2	1.160	0.0990	0.1544	0.0000		
	LTE B66+NR Bn5	1	1.03	-0.0200	0.1650	0.0000	1 + 2	77.8
188	DTS Ant.1	2	0.206	-0.0972	0.1550	0.0000	1 + 3	124.3
	UNII MIMO	3	0.437	0.1040	0.1570	0.0000	2 + 3	201.2
	LTE B66+NR Bn5	1	1.03	-0.0200	0.1650	0.0000	1 + 2	77.8
189	DTS MIMO	2	0.148	-0.0972	0.1550	0.0000	1 + 3	124.3
	UNII MIMO	3	0.437	0.1040	0.1570	0.0000	2 + 3	201.2
	LTE B66+NR Bn5	1	1.03	-0.0200	0.1650	0.0000	1 + 2	124.3
190	UNII MIMO+DTS Ant.2	2	0.819	0.1040	0.1560	0.0000	1 + 3	81.1
	BT Ant.1	3	0.187	-0.1010	0.1610	0.0000	2 + 3	205.1
	LTE B66+NR Bn5	1	0.46	-0.0300	0.1650	0.0000	1 + 2	134.3
191	UNII MIMO+DTS Ant.2	2	0.819	0.1040	0.1560	0.0000	1 + 3	71.1
	BT Ant.1	3	0.187	-0.1010	0.1610	0.0000	2 + 3	205.1
	LTE B66+NR Bn5	1	1.03	-0.0200	0.1650	0.0000	1 + 2	77.8
192	DTS Ant.1	2	0.206	-0.0972	0.1550	0.0000	1 + 3	119.3
	UNII MIMO	3	0.586	0.0990	0.1570	0.0000	2 + 3	196.2

Calculation results of separation distance between Peak SAR locations of each one pair. (Continued)

Figure	Mode		SAR	X	Y	Z	d: Calculated distance (mm)	
			W/kg	m	m	m		
193	LTE B66+NR Bn5	1	1.03	-0.0200	0.1650	0.0000	1 + 2	77.8
	DTS MIMO	2	0.148	-0.0972	0.1550	0.0000	1 + 3	119.3
	UNII MIMO	3	0.586	0.0990	0.1570	0.0000	2 + 3	196.2
194	LTE B66+NR Bn5	1	1.03	-0.0200	0.1650	0.0000	1 + 2	119.3
	UNII MIMO+DTS Ant.2	2	0.935	0.0990	0.1570	0.0000	1 + 3	81.1
	BT Ant.1	3	0.187	-0.1010	0.1610	0.0000	2 + 3	200.0
195	LTE B66+NR Bn5	1	0.46	-0.0300	0.1650	0.0000	1 + 2	67.9
	DTS Ant.1	2	0.206	-0.0972	0.1550	0.0000	1 + 3	129.2
	UNII MIMO	3	0.586	0.0990	0.1570	0.0000	2 + 3	196.2
196	LTE B66+NR Bn5	1	0.46	-0.0300	0.1650	0.0000	1 + 2	67.9
	DTS MIMO	2	0.148	-0.0972	0.1550	0.0000	1 + 3	129.2
	UNII MIMO	3	0.586	0.0990	0.1570	0.0000	2 + 3	196.2
197	LTE B66+NR Bn5	1	0.46	-0.0300	0.1650	0.0000	1 + 2	129.2
	UNII MIMO+DTS Ant.2	2	0.935	0.0990	0.1570	0.0000	1 + 3	71.1
	BT Ant.1	3	0.187	-0.1010	0.1610	0.0000	2 + 3	200.0
198	LTE B5+NR Bn66	1	1.11	-0.0200	0.1650	0.0000	1 + 2	80.3
	DTS MIMO	2	0.304	-0.0998	0.1560	0.0000		
	LTE B5+NR Bn66	1	1.11	-0.0200	0.1650	0.0000	1 + 2	117.3
199	DTS Ant.2	2	0.287	0.0972	0.1600	0.0000	1 + 3	81.1
	BT Ant.1	3	0.187	-0.1010	0.1610	0.0000	2 + 3	198.2
	LTE B5+NR Bn66	1	1.11	-0.0200	0.1650	0.0000	1 + 2	124.3
200	UNII MIMO	2	0.797	0.1040	0.1570	0.0000		
	LTE B5+NR Bn66	1	1.11	-0.0200	0.1650	0.0000	1 + 2	81.1
	BT Ant.1	2	0.187	-0.1010	0.1610	0.0000	1 + 3	124.3
201	UNII MIMO	3	0.797	0.1040	0.1570	0.0000	2 + 3	205.0
	LTE B5+NR Bn66	1	1.11	-0.0200	0.1650	0.0000	1 + 2	116.3
	UNII MIMO+BT Ant.2	2	1.230	0.0960	0.1560	0.0000		
202	LTE B5+NR Bn66	1	0.486	-0.0300	0.1600	0.0000	1 + 2	134.0
	UNII MIMO	2	0.797	0.1040	0.1570	0.0000		
	LTE B5+NR Bn66	1	0.486	-0.0300	0.1600	0.0000	1 + 2	71.0
203	BT Ant.1	2	0.187	-0.1010	0.1610	0.0000	1 + 3	134.0
	UNII MIMO	3	0.797	0.1040	0.1570	0.0000	2 + 3	205.0
	LTE B5+NR Bn66	1	0.486	-0.0300	0.1600	0.0000	1 + 2	126.1
204	UNII MIMO+BT Ant.2	2	1.230	0.0960	0.1560	0.0000		
	LTE B5+NR Bn66	1	1.11	-0.0200	0.1650	0.0000	1 + 2	119.9
	UNII MIMO	2	0.614	0.0996	0.1566	0.0000		
205	LTE B5+NR Bn66	1	1.11	-0.0200	0.1650	0.0000	1 + 2	81.1
	BT Ant.1	2	0.187	-0.1010	0.1610	0.0000	1 + 3	119.9
	UNII MIMO	3	0.614	0.0996	0.1566	0.0000	2 + 3	200.6
206	LTE B5+NR Bn66	1	1.11	-0.0200	0.1650	0.0000	1 + 2	119.5
	UNII MIMO+BT Ant.2	2	1.160	0.0990	0.1544	0.0000		
	LTE B5+NR Bn66	1	0.486	-0.0300	0.1600	0.0000	1 + 2	71.0
207	BT Ant.1	2	0.187	-0.1010	0.1610	0.0000	1 + 3	129.6
	UNII MIMO	3	0.614	0.0996	0.1566	0.0000	2 + 3	200.6
	LTE B5+NR Bn66	1	0.486	-0.0300	0.1600	0.0000	1 + 2	129.1
208	UNII MIMO+BT Ant.2	2	1.160	0.0990	0.1544	0.0000		
	LTE B5+NR Bn66	1	1.11	-0.0200	0.1650	0.0000	1 + 2	77.8
	DTS Ant.1	2	0.206	-0.0972	0.1550	0.0000	1 + 3	124.3
209	UNII MIMO	3	0.437	0.1040	0.1570	0.0000	2 + 3	201.2
	LTE B5+NR Bn66	1	1.11	-0.0200	0.1650	0.0000	1 + 2	77.8
	DTS MIMO	2	0.148	-0.0972	0.1550	0.0000	1 + 3	124.3
210	UNII MIMO	3	0.437	0.1040	0.1570	0.0000	2 + 3	201.2
	LTE B5+NR Bn66	1	1.11	-0.0200	0.1650	0.0000	1 + 2	124.3
	UNII MIMO+DTS Ant.2	2	0.819	0.1040	0.1560	0.0000	1 + 3	81.1
211	BT Ant.1	3	0.187	-0.1010	0.1610	0.0000	2 + 3	205.1
	LTE B5+NR Bn66	1	0.486	-0.0300	0.1600	0.0000	1 + 2	134.1
	UNII MIMO+DTS Ant.2	2	0.819	0.1040	0.1560	0.0000	1 + 3	71.0
212	BT Ant.1	3	0.187	-0.1010	0.1610	0.0000	2 + 3	205.1
	LTE B5+NR Bn66	1	1.11	-0.0200	0.1650	0.0000	1 + 2	77.8
	DTS Ant.1	2	0.206	-0.0972	0.1550	0.0000	1 + 3	119.3
213	UNII MIMO	3	0.586	0.0990	0.1570	0.0000	2 + 3	196.2
	LTE B5+NR Bn66	1	1.11	-0.0200	0.1650	0.0000	1 + 2	77.8
	DTS MIMO	2	0.148	-0.0972	0.1550	0.0000	1 + 3	119.3
214	UNII MIMO	3	0.586	0.0990	0.1570	0.0000	2 + 3	196.2
	LTE B5+NR Bn66	1	1.11	-0.0200	0.1650	0.0000	1 + 2	77.8
	DTS MIMO	2	0.148	-0.0972	0.1550	0.0000	1 + 3	119.3
215	UNII MIMO	3	0.586	0.0990	0.1570	0.0000	2 + 3	196.2
	LTE B5+NR Bn66	1	1.11	-0.0200	0.1650	0.0000	1 + 2	119.3
	UNII MIMO+DTS Ant.2	2	0.935	0.0990	0.1570	0.0000	1 + 3	81.1
216	BT Ant.1	3	0.187	-0.1010	0.1610	0.0000	2 + 3	200.0
	LTE B5+NR Bn66	1	0.486	-0.0300	0.1600	0.0000	1 + 2	67.4
	DTS Ant.1	2	0.206	-0.0972	0.1550	0.0000	1 + 3	129.0
217	UNII MIMO	3	0.586	0.0990	0.1570	0.0000	2 + 3	196.2
	LTE B5+NR Bn66	1	0.486	-0.0300	0.1600	0.0000	1 + 2	129.0
	UNII MIMO+DTS Ant.2	2	0.935	0.0990	0.1570	0.0000	1 + 3	71.0
218	BT Ant.1	3	0.187	-0.1010	0.1610	0.0000	2 + 3	200.0
	LTE B12+NR Bn66	1	0.917	-0.0200	0.1650	0.0000	1 + 2	80.3
	DTS MIMO	2	0.304	-0.0998	0.1560	0.0000		
219	LTE B12+NR Bn66	1	0.917	-0.0200	0.1650	0.0000	1 + 2	117.3
	DTS Ant.2	2	0.287	0.0972	0.1600	0.0000	1 + 3	81.1
	BT Ant.1	3	0.187	-0.1010	0.1610	0.0000	2 + 3	198.2
220	LTE B12+NR Bn66	1	0.917	-0.0200	0.1650	0.0000	1 + 2	124.3
	UNII MIMO	2	0.797	0.1040	0.1570	0.0000		
	LTE B12+NR Bn66	1	0.917	-0.0200	0.1650	0.0000	1 + 2	81.1
221	BT Ant.1	2	0.187	-0.1010	0.1610	0.0000	1 + 3	124.3
	UNII MIMO	3	0.797	0.1040	0.1570	0.0000	2 + 3	205.0
	LTE B12+NR Bn66	1	0.917	-0.0200	0.1650	0.0000	1 + 2	116.3
222	UNII MIMO+BT Ant.2	2	1.230	0.0960	0.1560	0.0000		

Calculation results of separation distance between Peak SAR locations of each one pair. (Continued)

Figure	Mode		SAR W/kg	X m	Y m	Z m	d: Calculated distance (mm)	
226	LTE B12+NR Bn66	1	0.449	-0.0300	0.1600	0.0000	1 + 2	134.0
	UNII MIMO	2	0.797	0.1040	0.1570	0.0000		
227	LTE B12+NR Bn66	1	0.449	-0.0300	0.1600	0.0000	1 + 2	71.0
	BT Ant.1	2	0.187	-0.1010	0.1610	0.0000	1 + 3	134.0
	UNII MIMO	3	0.797	0.1040	0.1570	0.0000	2 + 3	205.0
228	LTE B12+NR Bn66	1	0.449	-0.0300	0.1600	0.0000	1 + 2	126.1
	UNII MIMO+BT Ant.2	2	1.230	0.0960	0.1560	0.0000		
229	LTE B12+NR Bn66	1	0.917	-0.0200	0.1650	0.0000	1 + 2	119.9
	UNII MIMO	2	0.614	0.0996	0.1566	0.0000		
230	LTE B12+NR Bn66	1	0.917	-0.0200	0.1650	0.0000	1 + 2	81.1
	BT Ant.1	2	0.187	-0.1010	0.1610	0.0000	1 + 3	119.9
	UNII MIMO	3	0.614	0.0996	0.1566	0.0000	2 + 3	200.6
231	LTE B12+NR Bn66	1	0.917	-0.0200	0.1650	0.0000	1 + 2	119.5
	UNII MIMO+BT Ant.2	2	1.160	0.0990	0.1544	0.0000		
232	LTE B12+NR Bn66	1	0.449	-0.0300	0.1600	0.0000	1 + 2	71.0
	BT Ant.1	2	0.187	-0.1010	0.1610	0.0000	1 + 3	129.6
	UNII MIMO	3	0.614	0.0996	0.1566	0.0000	2 + 3	200.6
233	LTE B12+NR Bn66	1	0.449	-0.0300	0.1600	0.0000	1 + 2	129.1
	UNII MIMO+BT Ant.2	2	1.160	0.0990	0.1544	0.0000		
234	LTE B12+NR Bn66	1	0.917	-0.0200	0.1650	0.0000	1 + 2	77.8
	DTS Ant.1	2	0.206	-0.0972	0.1550	0.0000	1 + 3	124.3
	UNII MIMO	3	0.437	0.1040	0.1570	0.0000	2 + 3	201.2
235	LTE B12+NR Bn66	1	0.917	-0.0200	0.1650	0.0000	1 + 2	77.8
	DTS MIMO	2	0.148	-0.0972	0.1550	0.0000	1 + 3	124.3
	UNII MIMO	3	0.437	0.1040	0.1570	0.0000	2 + 3	201.2
236	LTE B12+NR Bn66	1	0.917	-0.0200	0.1650	0.0000	1 + 2	124.3
	UNII MIMO+DTS Ant.2	2	0.819	0.1040	0.1560	0.0000	1 + 3	81.1
	BT Ant.1	3	0.187	-0.1010	0.1610	0.0000	2 + 3	205.1
237	LTE B12+NR Bn66	1	0.449	-0.0300	0.1600	0.0000	1 + 2	134.1
	UNII MIMO+DTS Ant.2	2	0.819	0.1040	0.1560	0.0000	1 + 3	71.0
	BT Ant.1	3	0.187	-0.1010	0.1610	0.0000	2 + 3	205.1
238	LTE B12+NR Bn66	1	0.917	-0.0200	0.1650	0.0000	1 + 2	77.8
	DTS Ant.1	2	0.206	-0.0972	0.1550	0.0000	1 + 3	119.3
	UNII MIMO	3	0.586	0.0990	0.1570	0.0000	2 + 3	196.2
239	LTE B12+NR Bn66	1	0.917	-0.0200	0.1650	0.0000	1 + 2	77.8
	DTS MIMO	2	0.148	-0.0972	0.1550	0.0000	1 + 3	119.3
	UNII MIMO	3	0.586	0.0990	0.1570	0.0000	2 + 3	196.2
240	LTE B12+NR Bn66	1	0.917	-0.0200	0.1650	0.0000	1 + 2	119.3
	UNII MIMO+DTS Ant.2	2	0.935	0.0990	0.1570	0.0000	1 + 3	81.1
	BT Ant.1	3	0.187	-0.1010	0.1610	0.0000	2 + 3	200.0
241	LTE B12+NR Bn66	1	0.449	-0.0300	0.1600	0.0000	1 + 2	67.4
	DTS Ant.1	2	0.206	-0.0972	0.1550	0.0000	1 + 3	129.0
	UNII MIMO	3	0.586	0.0990	0.1570	0.0000	2 + 3	196.2
242	LTE B12+NR Bn66	1	0.449	-0.0300	0.1600	0.0000	1 + 2	67.4
	DTS MIMO	2	0.148	-0.0972	0.1550	0.0000	1 + 3	129.0
	UNII MIMO	3	0.586	0.0990	0.1570	0.0000	2 + 3	196.2
243	LTE B12+NR Bn66	1	0.449	-0.0300	0.1600	0.0000	1 + 2	129.0
	UNII MIMO+DTS Ant.2	2	0.935	0.0990	0.1570	0.0000	1 + 3	71.0
	BT Ant.1	3	0.187	-0.1010	0.1610	0.0000	2 + 3	200.0
244	LTE B13+NR Bn66	1	1.1	-0.0200	0.1650	0.0000	1 + 2	80.3
	DTS MIMO	2	0.304	-0.0998	0.1560	0.0000		
245	LTE B13+NR Bn66	1	1.1	-0.0200	0.1650	0.0000	1 + 2	117.3
	DTS Ant.2	2	0.287	0.0972	0.1600	0.0000	1 + 3	81.1
	BT Ant.1	3	0.187	-0.1010	0.1610	0.0000	2 + 3	198.2
246	LTE B13+NR Bn66	1	1.1	-0.0200	0.1650	0.0000	1 + 2	124.3
	UNII MIMO	2	0.797	0.1040	0.1570	0.0000		
247	LTE B13+NR Bn66	1	1.1	-0.0200	0.1650	0.0000	1 + 2	81.1
	BT Ant.1	2	0.187	-0.1010	0.1610	0.0000	1 + 3	124.3
	UNII MIMO	3	0.797	0.1040	0.1570	0.0000	2 + 3	205.0
248	LTE B13+NR Bn66	1	1.1	-0.0200	0.1650	0.0000	1 + 2	116.3
	UNII MIMO+BT Ant.2	2	1.230	0.0960	0.1560	0.0000		
249	LTE B13+NR Bn66	1	0.49	-0.0300	0.1600	0.0000	1 + 2	134.0
	UNII MIMO	2	0.797	0.1040	0.1570	0.0000		
250	LTE B13+NR Bn66	1	0.49	-0.0300	0.1600	0.0000	1 + 2	71.0
	BT Ant.1	2	0.187	-0.1010	0.1610	0.0000	1 + 3	134.0
	UNII MIMO	3	0.797	0.1040	0.1570	0.0000	2 + 3	205.0
251	LTE B13+NR Bn66	1	0.49	-0.0300	0.1600	0.0000	1 + 2	126.1
	UNII MIMO+BT Ant.2	2	1.230	0.0960	0.1560	0.0000		
252	LTE B13+NR Bn66	1	1.1	-0.0200	0.1650	0.0000	1 + 2	119.9
	UNII MIMO	2	0.614	0.0996	0.1566	0.0000		
253	LTE B13+NR Bn66	1	1.1	-0.0200	0.1650	0.0000	1 + 2	81.1
	BT Ant.1	2	0.187	-0.1010	0.1610	0.0000	1 + 3	119.9
	UNII MIMO	3	0.614	0.0996	0.1566	0.0000	2 + 3	200.6
254	LTE B13+NR Bn66	1	1.1	-0.0200	0.1650	0.0000	1 + 2	119.5
	UNII MIMO+BT Ant.2	2	1.160	0.0990	0.1544	0.0000		
255	LTE B13+NR Bn66	1	0.49	-0.0300	0.1600	0.0000	1 + 2	71.0
	BT Ant.1	2	0.187	-0.1010	0.1610	0.0000	1 + 3	129.6
	UNII MIMO	3	0.614	0.0996	0.1566	0.0000	2 + 3	200.6
256	LTE B13+NR Bn66	1	0.49	-0.0300	0.1600	0.0000	1 + 2	129.1
	UNII MIMO+BT Ant.2	2	1.160	0.0990	0.1544	0.0000		
257	LTE B13+NR Bn66	1	1.1	-0.0200	0.1650	0.0000	1 + 2	77.8
	DTS Ant.1	2	0.206	-0.0972	0.1550	0.0000	1 + 3	124.3
	UNII MIMO	3	0.437	0.1040	0.1570	0.0000	2 + 3	201.2
258	LTE B13+NR Bn66	1	1.1	-0.0200	0.1650	0.0000	1 + 2	77.8
	DTS MIMO	2	0.148	-0.0972	0.1550	0.0000	1 + 3	124.3
	UNII MIMO	3	0.437	0.1040	0.1570	0.0000	2 + 3	201.2
259	LTE B13+NR Bn66	1	1.1	-0.0200	0.1650	0.0000	1 + 2	124.3
	UNII MIMO+DTS Ant.2	2	0.819	0.1040	0.1560	0.0000	1 + 3	81.1
	BT Ant.1	3	0.187	-0.1010	0.1610	0.0000	2 + 3	205.1

Calculation results of separation distance between Peak SAR locations of each one pair. (Continued)

Figure	Mode		SAR	X	Y	Z	d: Calculated distance (mm)
			W/kg	m	m	m	
260	LTE B13+NR Bn66	1	0.49	-0.0300	0.1600	0.0000	1 + 2 67.4
	DTS Ant.1	2	0.206	-0.0972	0.1550	0.0000	1 + 3 134.0
	UNII MIMO	3	0.437	0.1040	0.1570	0.0000	2 + 3 201.2
261	LTE B13+NR Bn66	1	0.49	-0.0300	0.1600	0.0000	1 + 2 134.1
	UNII MIMO+DTS Ant.2	2	0.819	0.1040	0.1560	0.0000	1 + 3 71.0
	BT Ant.1	3	0.187	-0.1010	0.1610	0.0000	2 + 3 205.1
262	LTE B13+NR Bn66	1	1.1	-0.0200	0.1650	0.0000	1 + 2 77.8
	DTS Ant.1	2	0.206	-0.0972	0.1550	0.0000	1 + 3 119.3
	UNII MIMO	3	0.586	0.0990	0.1570	0.0000	2 + 3 196.2
263	LTE B13+NR Bn66	1	1.1	-0.0200	0.1650	0.0000	1 + 2 77.8
	DTS MIMO	2	0.148	-0.0972	0.1550	0.0000	1 + 3 119.3
	UNII MIMO	3	0.586	0.0990	0.1570	0.0000	2 + 3 196.2
264	LTE B13+NR Bn66	1	1.1	-0.0200	0.1650	0.0000	1 + 2 119.3
	UNII MIMO+DTS Ant.2	2	0.935	0.0990	0.1570	0.0000	1 + 3 81.1
	BT Ant.1	3	0.187	-0.1010	0.1610	0.0000	2 + 3 200.0
265	LTE B13+NR Bn66	1	0.49	-0.0300	0.1600	0.0000	1 + 2 67.4
	DTS Ant.1	2	0.206	-0.0972	0.1550	0.0000	1 + 3 129.0
	UNII MIMO	3	0.586	0.0990	0.1570	0.0000	2 + 3 196.2
266	LTE B13+NR Bn66	1	0.49	-0.0300	0.1600	0.0000	1 + 2 67.4
	DTS MIMO	2	0.148	-0.0972	0.1550	0.0000	1 + 3 129.0
	UNII MIMO	3	0.586	0.0990	0.1570	0.0000	2 + 3 196.2
267	LTE B13+NR Bn66	1	0.49	-0.0300	0.1600	0.0000	1 + 2 129.0
	UNII MIMO+DTS Ant.2	2	0.935	0.0990	0.1570	0.0000	1 + 3 71.0
	BT Ant.1	3	0.187	-0.1010	0.1610	0.0000	2 + 3 200.0
268	LTE B2(Main2Ant.)	1	0.797	0.0295	-0.1620	0.0000	1 + 2 329.7
	NR Bn66	2	0.702	-0.0315	0.1620	0.0000	1 + 3 343.3
	DTS MIMO	3	0.304	-0.0998	0.1560	0.0000	2 + 3 68.6
269	LTE B2(Main2Ant.)	1	0.797	0.0295	-0.1620	0.0000	1 + 2 329.7
	NR Bn66	2	0.702	-0.0315	0.1620	0.0000	1 + 3 329.0
	DTS Ant.2	3	0.287	0.0972	0.1600	0.0000	1 + 4 348.4
	BT Ant.1	4	0.187	-0.1010	0.1610	0.0000	2 + 3 128.7
							2 + 4 69.5
							3 + 4 198.2
270	LTE B2(Main2Ant.)	1	0.797	0.0295	-0.1620	0.0000	1 + 2 329.7
	NR Bn66	2	0.702	-0.0315	0.1620	0.0000	1 + 3 327.6
	UNII MIMO	3	0.437	0.1040	0.1570	0.0000	2 + 3 135.6
271	LTE B2(Main2Ant.)	1	0.797	0.0295	-0.1620	0.0000	1 + 2 329.7
	NR Bn66	2	0.702	-0.0315	0.1620	0.0000	1 + 3 348.4
	BT Ant.1	3	0.187	-0.1010	0.1610	0.0000	1 + 4 327.6
	UNII MIMO	4	0.437	0.1040	0.1570	0.0000	2 + 3 69.5
							2 + 4 135.6
							3 + 4 205.0
272	LTE B2(Main2Ant.)	1	0.797	0.0295	-0.1620	0.0000	1 + 3 329.7
	BT Ant.2+UNII MIMO	2	1.260	0.0960	0.1560	0.0000	2 + 3 127.6
	NR Bn66	3	0.702	-0.0315	0.1620	0.0000	1 + 2 324.9
273	LTE B2(Main2Ant.)	1	0.797	0.0295	-0.1620	0.0000	1 + 2 329.7
	NR Bn66	2	0.702	-0.0315	0.1620	0.0000	1 + 3 326.2
	UNII MIMO	3	0.614	0.0996	0.1566	0.0000	2 + 3 131.2
274	LTE B2(Main2Ant.)	1	0.797	0.0295	-0.1620	0.0000	1 + 2 329.7
	NR Bn66	2	0.702	-0.0315	0.1620	0.0000	1 + 3 348.4
	BT Ant.1	3	0.187	-0.1010	0.1610	0.0000	1 + 4 326.2
	UNII MIMO	4	0.614	0.0996	0.1566	0.0000	2 + 3 69.5
							2 + 4 131.2
							3 + 4 200.6
275	LTE B2(Main2Ant.)	1	0.797	0.0295	-0.1620	0.0000	1 + 3 329.7
	BT Ant.2+UNII MIMO	2	1.16	0.0990	0.1544	0.0000	2 + 3 130.7
	NR Bn66	3	0.702	-0.0315	0.1620	0.0000	1 + 2 323.9
276	LTE B2(Main2Ant.)	1	0.797	0.0295	-0.1620	0.0000	1 + 2 329.7
	NR Bn66	2	0.702	-0.0315	0.1620	0.0000	1 + 3 341.4
	DTS Ant.1	3	0.206	-0.0972	0.1550	0.0000	1 + 4 326.2
	UNII MIMO	4	0.614	0.0996	0.1566	0.0000	2 + 3 66.1
							2 + 4 131.2
							3 + 4 196.8
277	LTE B2(Main2Ant.)	1	0.797	0.0295	-0.1620	0.0000	1 + 2 329.7
	NR Bn66	2	0.702	-0.0315	0.1620	0.0000	1 + 3 343.3
	DTS MIMO	3	0.148	-0.0998	0.1560	0.0000	1 + 4 326.2
	UNII MIMO	4	0.614	0.0996	0.1566	0.0000	2 + 3 68.6
							2 + 4 131.2
							3 + 4 199.4
278	LTE B2(Main2Ant.)	1	0.797	0.0295	-0.1620	0.0000	1 + 2 329.7
	NR Bn66	2	0.702	-0.0315	0.1620	0.0000	1 + 3 326.6
	UNII MIMO+DTS Ant.2	3	0.819	0.1040	0.1560	0.0000	1 + 4 348.4
	BT Ant.1	4	0.187	-0.1010	0.1610	0.0000	2 + 3 135.6
							2 + 4 69.5
							3 + 4 205.1
279	LTE B2(Main2Ant.)	1	0.797	0.0295	-0.1620	0.0000	1 + 2 329.7
	NR Bn66	2	0.702	-0.0315	0.1620	0.0000	1 + 3 341.4
	DTS Ant.1	3	0.206	-0.0972	0.1550	0.0000	1 + 4 326.5
	UNII MIMO	4	0.586	0.0990	0.1570	0.0000	2 + 3 66.1
							2 + 4 130.6
							3 + 4 196.2

Calculation results of separation distance between Peak SAR locations of each one pair. (Continued)

Figure	Mode		SAR	X	Y	Z	d: Calculated distance (mm)	
			W/kg	m	m	m		
280	LTE B2(Main2Ant.)	1	0.797	0.0295	-0.1620	0.0000	1 + 2	329.7
	NR Bn66	2	0.702	-0.0315	0.1620	0.0000	1 + 3	343.3
	DTS MIMO	3	0.148	-0.0998	0.1560	0.0000	1 + 4	326.5
	UNII MIMO	4	0.586	0.0990	0.1570	0.0000	2 + 3	68.6
							2 + 4	130.6
							3 + 4	198.8
281	LTE B2(Main2Ant.)	1	0.797	0.0295	-0.1620	0.0000	1 + 2	329.7
	NR Bn66	2	0.702	-0.0315	0.1620	0.0000	1 + 3	326.5
	UNII MIMO+DTS Ant.2	3	0.935	0.0990	0.1570	0.0000	1 + 4	348.4
	BT Ant.1	4	0.187	-0.1010	0.1610	0.0000	2 + 3	130.6
							2 + 4	69.5
							3 + 4	200.0

End