

System Performance Check Report

Exposure Conditions

Phantom Section, TSL	Test Distance [mm]	Band	Group, UID	Frequency [MHz], Channel Number	Conversion Factor	TSL Conductivity [S/m]	TSL Permittivity
Flat, HSL	3		, 0--	6500.0, 0	5.25	5.93	33.9

Hardware Setup

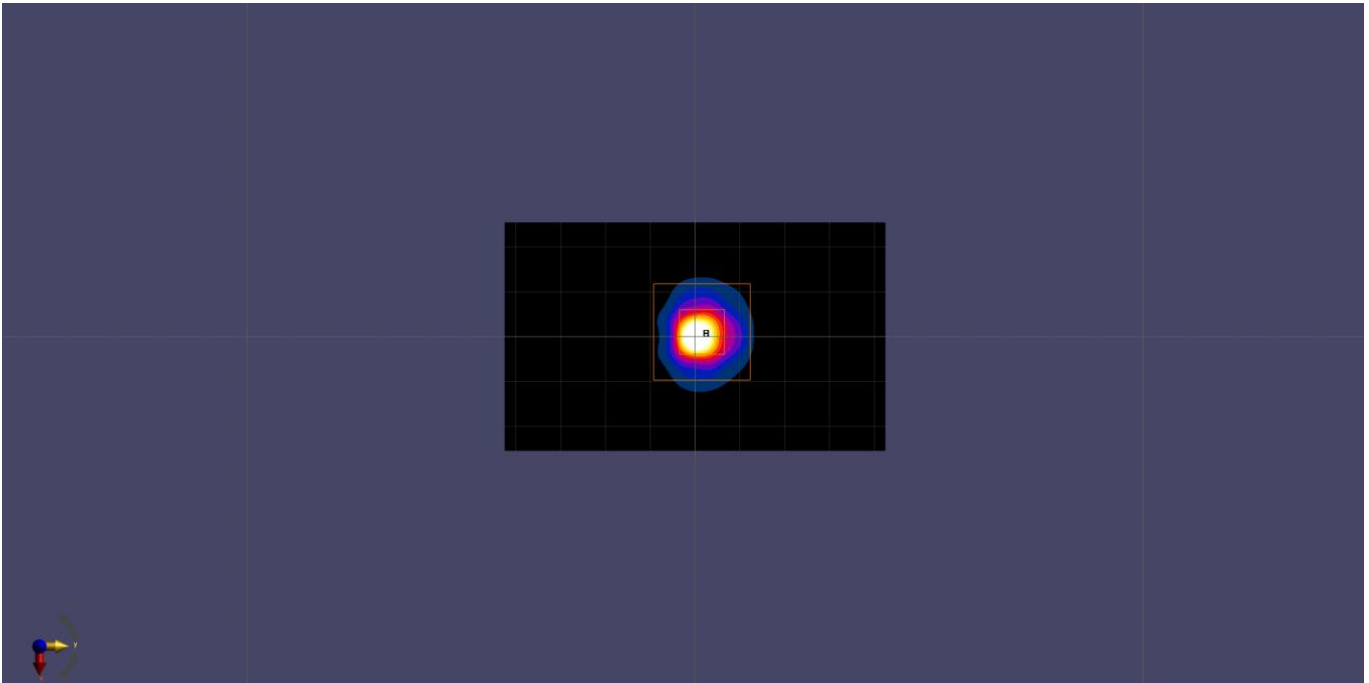
Phantom	TSL, Measured Date	Probe, Calibration Date	DAE, Calibration Date
ELI V6.0 (20deg probe tilt) - 2005	HBBL-600-10000, 2021-Nov-16	EX3DV4 - SN7545, 2021-08-26	DAE4 Sn1670, 2021-05-06

Scan Setup

	Area Scan	Zoom Scan
Grid Extents [mm]	51.0 x 85.0	22.0 x 22.0 x 22.0
Grid Steps [mm]	8.5 x 8.5	3.4 x 3.4 x 1.4
Sensor Surface [mm]	3.0	1.4

Measurement Results

	Area Scan	Zoom Scan
Date	2021-11-16, 02:06	2021-11-16, 02:36
psSAR1g [W/Kg]	26.2	30.5
psSAR10g [W/Kg]	5.13	5.61
Power Drift [dB]	0.05	0.02



System Performance Check Report

Exposure Conditions

Phantom Section, TSL	Test Distance [mm]	Band	Group, UID	Frequency [MHz], Channel Number	Conversion Factor	TSL Conductivity [S/m]	TSL Permittivity
Flat, HSL	10		, 0--	2450.0, 0	7.56	1.87	38.6

Hardware Setup

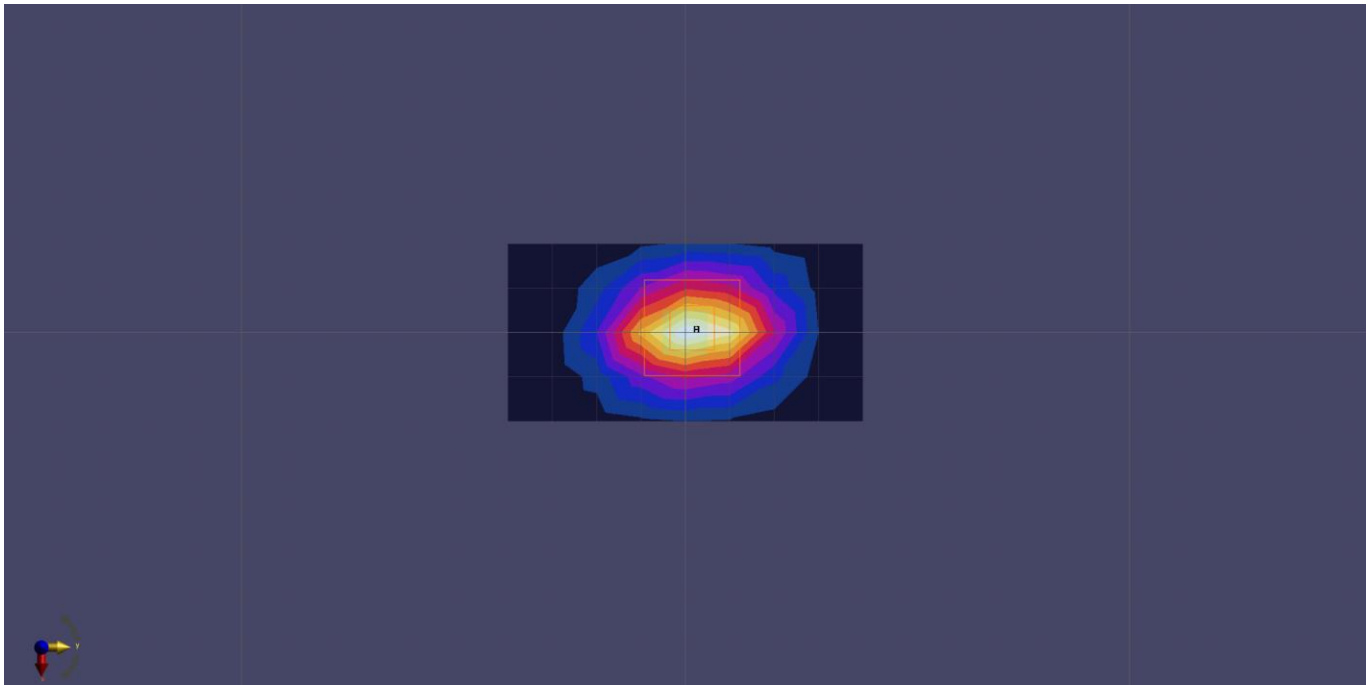
Phantom	TSL, Measured Date	Probe, Calibration Date	DAE, Calibration Date
ELI V6.0 (20deg probe tilt) - 2005	HBBL-600-10000, 2021-Nov-19	EX3DV4 - SN7545, 2021-08-26	DAE4 Sn1670, 2021-05-06

Scan Setup

	Area Scan	Zoom Scan
Grid Extents [mm]	40.0 x 80.0	30.0 x 30.0 x 30.0
Grid Steps [mm]	10.0 x 10.0	5.0 x 5.0 x 1.5
Sensor Surface [mm]	3.0	1.4

Measurement Results

	Area Scan	Zoom Scan
Date	2021-11-19, 09:41	2021-11-19, 10:02
psSAR1g [W/Kg]	5.08	4.96
psSAR10g [W/Kg]	2.34	2.29
Power Drift [dB]	-0.03	-0.12



Measurement Report for Device, FRONT, Validation band, CW, Channel 10000 (10000.0 MHz)

Exposure Conditions

Phantom Section	Position, Test Distance [mm]	Band	Group, UID	Frequency [MHz], Channel Number	Conversion Factor
5G	FRONT, 10 mm	Validation band	CW, 0--	10000.0, 10000	1.0

Hardware Setup

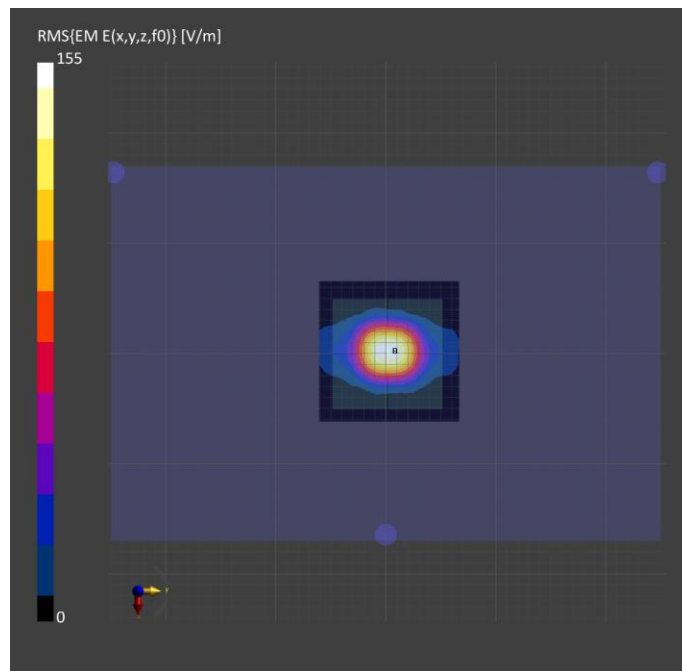
Phantom	Medium	Probe, Calibration Date	DAE, Calibration Date
mmWave - xxxx	Air -	EUmmWV4 - SN9559_F1-55GHz, 2021-04-01	DAE4 Sn1667, 2021-04-08

Scan Setup

	5G Scan
Grid Extents [mm]	120.0 x 120.0
Grid Steps [lambda]	0.25 x 0.25
Sensor Surface [mm]	10.0
MAIA	N/A

Measurement Results

	5G Scan
Date	2021-11-16
Avg. Area [cm2]	4.00
psPDn+ [W/m2]	52.1
psPDtot+ [W/m2]	52.4
psPDmod+ [W/m2]	
Emax [V/m]	149
Power Drift [dB]	0.01



Measurement Report for Device, FRONT, Validation band, CW, Channel 10000 (10000.0 MHz)

Exposure Conditions

Phantom Section	Position, Test Distance [mm]	Band	Group, UID	Frequency [MHz], Channel Number	Conversion Factor
5G	FRONT, 10 mm	Validation band	CW, 0--	10000.0, 10000	1.0

Hardware Setup

Phantom	Medium	Probe, Calibration Date	DAE, Calibration Date
mWave - xxxx	Air -	EUmmWV4 - SN9559_F1-55GHz, 2021-04-01	DAE4 Sn1667, 2021-04-08

Scan Setup

	5G Scan
Grid Extents [mm]	120.0 x 120.0
Grid Steps [lambda]	0.25 x 0.25
Sensor Surface [mm]	10.0
MAIA	N/A

Measurement Results

	5G Scan
Date	2021-11-17
Avg. Area [cm2]	4.00
psPDn+ [W/m2]	58.1
psPDtot+ [W/m2]	58.4
psPDmod+ [W/m2]	
Emax [V/m]	157
Power Drift [dB]	0.01

