

Measurement Report for Device, BACK, U-NII-7, UID 10731 AAC, Channel 151 (6705.0MHz)

Exposure Conditions

Phantom Section	Position	Test Distance [mm]	Band	Group	UID	Rev	Frequency [MHz]	Channel Number
Flat HSL	BACK	0.00	U-NII-7	WLAN	10731	AAC	6705.000	151

Hardware Setup

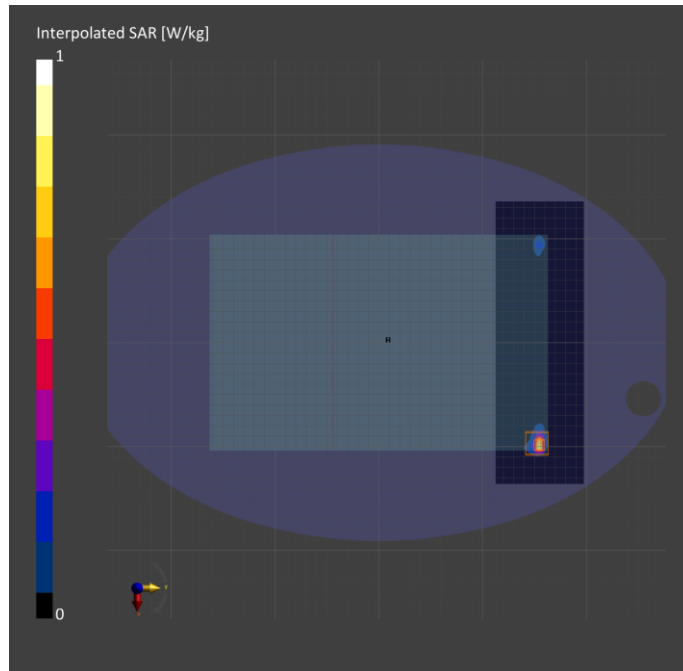
Phantom	TSL	Probe	Calibration Date	DAE	Calibration Date
ELI V6.0 (20deg probe tilt)	HBBL-600-10000	EX3DV4 - SN7545	2021-08-26	DAE4 Sn1670	2021-05-06

Scan Setup

	Area Scan	Zoom Scan
Grid Extents [mm]	272.0 x 85.0	22.0 x 22.0 x 22.0
Grid Steps [mm]	8.5 x 8.5	2.6 x 2.6 x 1.2
Sensor Surface [mm]	3.0	1.4

Measurement Results

	Area Scan	Zoom Scan
Date	2021-11-18	2021-11-18
psSAR1g [W/kg]	0.504	0.540
psSAR10g [W/kg]	0.111	0.111
sPDab (4.0cm2, sq) [W/m2]		2.65
Power Drift [dB]	0.15	-0.11



Measurement Report for Device, BACK, U-NII-5, UID 10683 AAC, Channel 45 (6175.0MHz)

Exposure Conditions

Phantom Section	Position	Test Distance [mm]	Band	Group	UID	Rev	Frequency [MHz]	Channel Number
Flat HSL	BACK	0.00	U-NII-5	WLAN	10683	AAC	6175.000	45

Hardware Setup

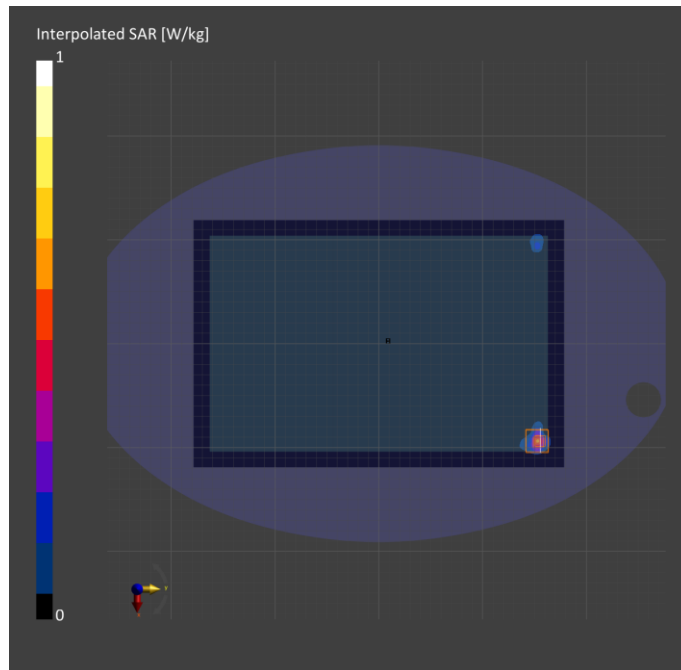
Phantom	TSL	Probe	Calibration Date	DAE	Calibration Date
ELI V6.0 (20deg probe tilt)	HBBL-600-10000	EX3DV4 - SN7545	2021-08-26	DAE4 Sn1670	2021-05-06

Scan Setup

	Area Scan	Zoom Scan
Grid Extents [mm]	238.0 x 357.0	22.0 x 22.0 x 22.0
Grid Steps [mm]	8.5 x 8.5	3.4 x 3.4 x 1.4
Sensor Surface [mm]	3.0	1.4

Measurement Results

	Area Scan	Zoom Scan
Date	2021-11-15	2021-11-16
psSAR1g [W/kg]	0.385	0.507
psSAR10g [W/kg]	0.097	0.115
sPDab (4.0cm2, sq) [W/m2]		2.73
Power Drift [dB]	0.02	0.02



Measurement Report for Device, BACK, U-NII-5, IEEE 802.11ax (160MHz, MCS0, 99pc duty cycle), Channel 79 (6345.0 MHz)

Exposure Conditions

Phantom Section	Position, Test Distance [mm]	Band	Group, UID	Frequency [MHz], Channel Number	Conversion Factor
5G	BACK, 2.00	U-NII-5	WLAN, 10755-AAC	6345.0, 79	1.0

Hardware Setup

Phantom	Medium	Probe, Calibration Date	DAE, Calibration Date
mWave - xxxx	Air -	EUmmWV4 - SN9559_F1-55GHz, 2021-04-01	DAE4 Sn1667, 2021-04-08

Scan Setup

	5G Scan
Grid Extents [mm]	120.0 x 120.0
Grid Steps [lambda]	0.05 x 0.05
Sensor Surface [mm]	2.0
MAIA	N/A

Measurement Results

	5G Scan
Date	2021-11-18
Avg. Area [cm2]	4.00
psPDn+ [W/m2]	0.633
psPDtot+ [W/m2]	0.742
psPDmod+ [W/m2]	
E _{max} [V/m]	38.3
Power Drift [dB]	-0.16

