

## APPENDIX B: POWER DENSITY SYSTEM VERIFICATION PLOTS

# Element

Date: 07/08/2024

30 GHz System Verification

## Device Under Test Properties

DUT	Serial Number
30 GHz Verification Source	1043

## Exposure Conditions

Phantom Section	Position	Test Distance [mm]	Band	Frequency [MHz]
5G	FRONT	5.55	Validation band	30000.0

## Hardware Setup

Probe, Calibration Date	DAE, Calibration Date
EUmWV3 - SN9421_F1-55GHz, 2024-03-04	DAE4ip Sn1638, 2023-10-18

## Software Setup

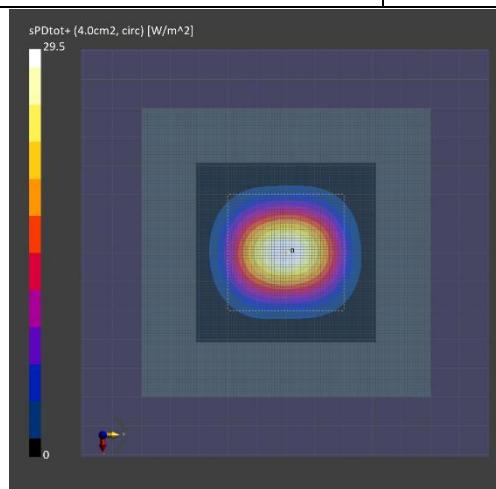
Software	Software Version
cDASY6 Module mmWave	3.2.0.1840

## Scans Setup

Scan Type	5G Scan
Grid Extents [mm]	60.0 x 60.0
Grid Steps [lambda]	0.25 x 0.25
Sensor Surface [mm]	5.55

## Measurement Results

Scan Type	5G Scan
Avg. Area [cm <sup>2</sup> ]	4.00
pS <sub>tot</sub> avg [W/m <sup>2</sup> ]	29.5
pS <sub>n</sub> avg [W/m <sup>2</sup> ]	29.1
E <sub>peak</sub> [V/m]	121
Deviation (dB)	-0.05



# Element

Date: 07/09/2024

30 GHz System Verification

## Device Under Test Properties

DUT	Serial Number
30 GHz Verification Source	1043

## Exposure Conditions

Phantom Section	Position	Test Distance [mm]	Band	Frequency [MHz]
5G	FRONT	5.55	Validation band	30000.0

## Hardware Setup

Probe, Calibration Date	DAE, Calibration Date
EUmWV3 - SN9389_F1-55GHz, 2024-01-05	DAE4 Sn859, 2024-01-09

## Software Setup

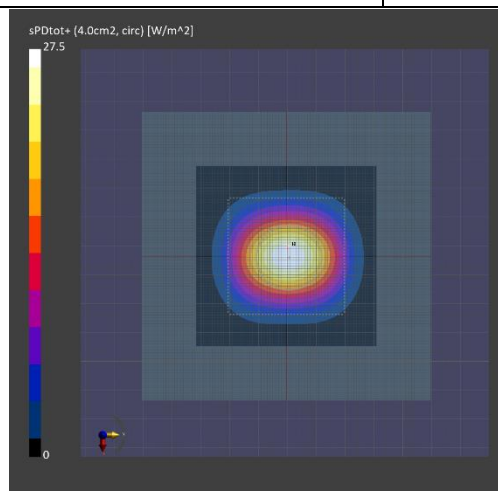
Software	Software Version
cDASY6 Module mmWave	3.2.0.1840

## Scans Setup

Scan Type	5G Scan
Grid Extents [mm]	60.0 x 60.0
Grid Steps [lambda]	0.25 x 0.25
Sensor Surface [mm]	5.55

## Measurement Results

Scan Type	5G Scan
Avg. Area [cm <sup>2</sup> ]	4.00
pS <sub>tot</sub> avg [W/m <sup>2</sup> ]	27.5
pS <sub>n</sub> avg [W/m <sup>2</sup> ]	27.1
E <sub>peak</sub> [V/m]	117
Deviation [dB]	0.05



# Element

Date: 07/11/2024

30 GHz System Verification

## Device Under Test Properties

DUT	Serial Number
30 GHz Verification Source	1043

## Exposure Conditions

Phantom Section	Position	Test Distance [mm]	Band	Frequency [MHz]
5G	FRONT	5.55	Validation band	30000.0

## Hardware Setup

Probe, Calibration Date	DAE, Calibration Date
EUmWV3 - SN9421_F1-55GHz, 2024-03-04	DAE4ip Sn1638, 2023-10-18

## Software Setup

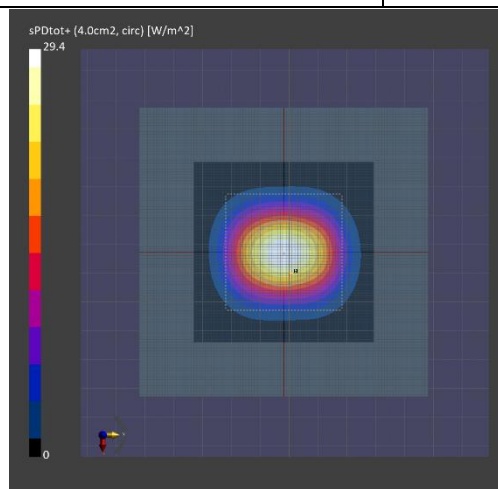
Software	Software Version
cDASY6 Module mmWave	3.2.0.1840

## Scans Setup

Scan Type	5G Scan
Grid Extents [mm]	60.0 x 60.0
Grid Steps [lambda]	0.25 x 0.25
Sensor Surface [mm]	5.55

## Measurement Results

Scan Type	5G Scan
Avg. Area [cm <sup>2</sup> ]	4.00
pS <sub>tot</sub> avg [W/m <sup>2</sup> ]	29.4
pS <sub>n</sub> avg [W/m <sup>2</sup> ]	29.0
E <sub>peak</sub> [V/m]	122
Deviation [dB]	0.03



# Element

Date: 07/11/2024

30 GHz System Verification

## Device Under Test Properties

DUT	Serial Number
30 GHz Verification Source	1043

## Exposure Conditions

Phantom Section	Position	Test Distance [mm]	Band	Frequency [MHz]
5G	FRONT	5.55	Validation band	30000.0

## Hardware Setup

Probe, Calibration Date	DAE, Calibration Date
EUmWV3 - SN9389_F1-55GHz, 2024-01-05	DAE4 Sn859, 2024-01-09

## Software Setup

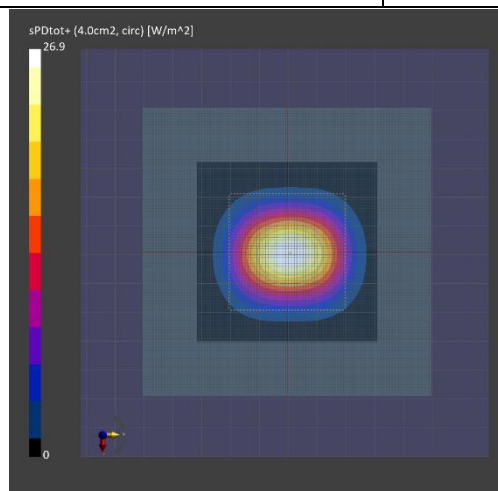
Software	Software Version
cDASY6 Module mmWave	3.2.0.1840

## Scans Setup

Scan Type	5G Scan
Grid Extents [mm]	60.0 x 60.0
Grid Steps [lambda]	0.25 x 0.25
Sensor Surface [mm]	5.55

## Measurement Results

Scan Type	5G Scan
Avg. Area [cm <sup>2</sup> ]	4.00
pS <sub>tot</sub> avg [W/m <sup>2</sup> ]	26.9
pS <sub>n</sub> avg [W/m <sup>2</sup> ]	26.6
E <sub>peak</sub> [V/m]	117
Deviation [dB]	0.05



# Element

Date: 07/16/2024

30 GHz System Verification

## Device Under Test Properties

DUT	Serial Number
30 GHz Verification Source	1043

## Exposure Conditions

Phantom Section	Position	Test Distance [mm]	Band	Frequency [MHz]
5G	FRONT	5.55	Validation band	30000.0

## Hardware Setup

Probe, Calibration Date	DAE, Calibration Date
EUmWV3 - SN9389_F1-55GHz, 2024-01-05	DAE4 Sn859, 2024-01-09

## Software Setup

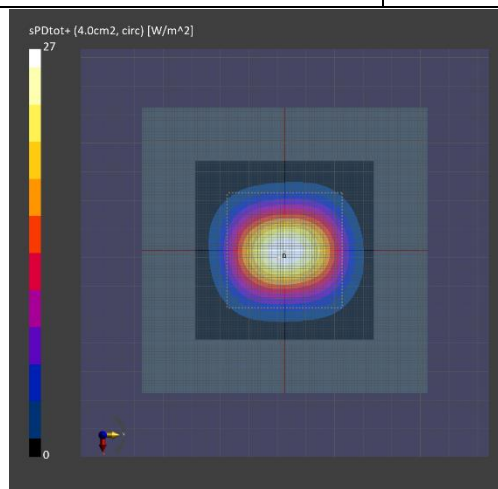
Software	Software Version
cDASY6 Module mmWave	3.2.0.1840

## Scans Setup

Scan Type	5G Scan
Grid Extents [mm]	60.0 x 60.0
Grid Steps [lambda]	0.25 x 0.25
Sensor Surface [mm]	5.55

## Measurement Results

Scan Type	5G Scan
Avg. Area [cm <sup>2</sup> ]	4.00
pS <sub>tot</sub> avg [W/m <sup>2</sup> ]	27.0
pS <sub>n</sub> avg [W/m <sup>2</sup> ]	26.7
E <sub>peak</sub> [V/m]	119
Deviation [dB]	-0.01



# Element

Date: 07/18/2024

30 GHz System Verification

## Device Under Test Properties

DUT	Serial Number
30 GHz Verification Source	1043

## Exposure Conditions

Phantom Section	Position	Test Distance [mm]	Band	Frequency [MHz]
5G	FRONT	5.55	Validation band	30000.0

## Hardware Setup

Probe, Calibration Date	DAE, Calibration Date
EUmWV3 - SN9389_F1-55GHz, 2024-01-05	DAE4 Sn859, 2024-01-09

## Software Setup

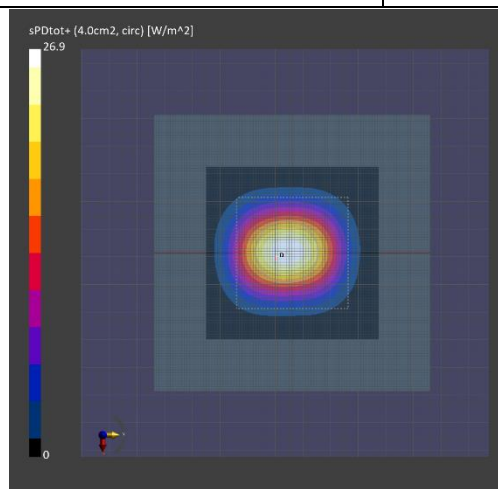
Software	Software Version
cDASY6 Module mmWave	3.2.0.1840

## Scans Setup

Scan Type	5G Scan
Grid Extents [mm]	60.0 x 60.0
Grid Steps [lambda]	0.25 x 0.25
Sensor Surface [mm]	5.55

## Measurement Results

Scan Type	5G Scan
Avg. Area [cm <sup>2</sup> ]	4.00
pS <sub>tot</sub> avg [W/m <sup>2</sup> ]	26.9
pS <sub>n</sub> avg [W/m <sup>2</sup> ]	26.6
E <sub>peak</sub> [V/m]	116
Deviation [dB]	-0.05



# Element

Date: 07/29/2024

30 GHz System Verification

## Device Under Test Properties

DUT	Serial Number
30 GHz Verification Source	1044

## Exposure Conditions

Phantom Section	Position	Test Distance [mm]	Band	Frequency [MHz]
5G	FRONT	5.55	Validation band	30000.0

## Hardware Setup

Probe, Calibration Date	DAE, Calibration Date
EUmWV3 - SN9389_F1-55GHz, 2024-01-05	DAE4 Sn859, 2024-01-09

## Software Setup

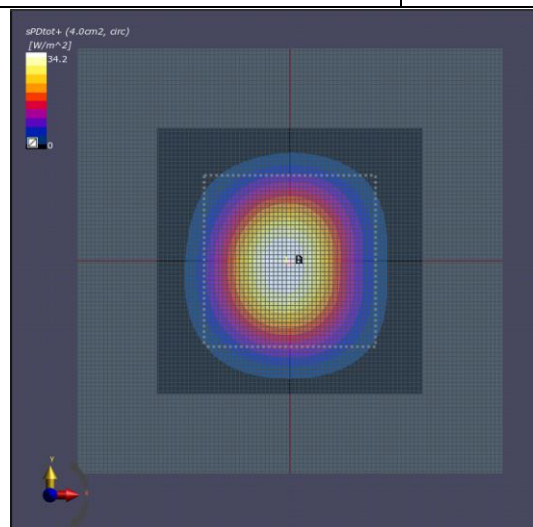
Software	Software Version
cDASY6 Module mmWave	3.2.0.1840

## Scans Setup

Scan Type	5G Scan
Grid Extents [mm]	60.0 x 60.0
Grid Steps [lambda]	0.25 x 0.25
Sensor Surface [mm]	5.55

## Measurement Results

Scan Type	5G Scan
Avg. Area [cm <sup>2</sup> ]	4.00
pS <sub>rot</sub> avg [W/m <sup>2</sup> ]	34.20
pS <sub>n</sub> avg [W/m <sup>2</sup> ]	33.6
E <sub>peak</sub> [V/m]	129
Deviation [dB]	-0.10





# Element

Date: 2024-08-01

## 30 GHz System Verification

### Device Under Test Properties

DUT	Serial Number
30 GHz Verification Source	1044

### Exposure Conditions

Phantom Section	Position	Test Distance [mm]	Band	Frequency [MHz]
5G	FRONT	5.55	Validation band	30000.0

### Hardware Setup

Probe, Calibration Date	DAE, Calibration Date
EUmmWV3 - SN9389_F1-55GHz, 2024-01-05	DAE4 Sn859, 2024-01-09

### Software Setup

Software	Software Version
cDasy6 Module mmWave	3.2.0.1840

### Scans Setup

Scan Type	5G Scan
Grid Extents [mm]	60.0 x 60.0
Grid Steps [lambda]	0.25 x 0.25
Sensor Surface [mm]	5.55

### Measurement Results

Scan Type	5G Scan
Avg. Area [cm <sup>2</sup> ]	4.00
pS <sub>tot</sub> avg [W/m <sup>2</sup> ]	32.3
pS <sub>n</sub> avg [W/m <sup>2</sup> ]	32.0
E <sub>peak</sub> [V/m]	128
Power Drift [dB]	-0.10

