

2023-04-18 System Performance Check Report D5GHzV2 - SN1213

Summary

Dipole	D5GHzV2 - SN1213		
Frequency [MHz]	5850.0		
Phantom Section TSL	Flat HSL	Dev. Peak [%]	-5.4
Power [dBm]	17.0	Iso. Error [%]	1.4

Exposure Conditions

Dipole Distance [mm]	10	TSL Permittivity	34.8
Conversion Factor	5.51	TSL Conductivity [S/m]	5.27

Hardware Setup

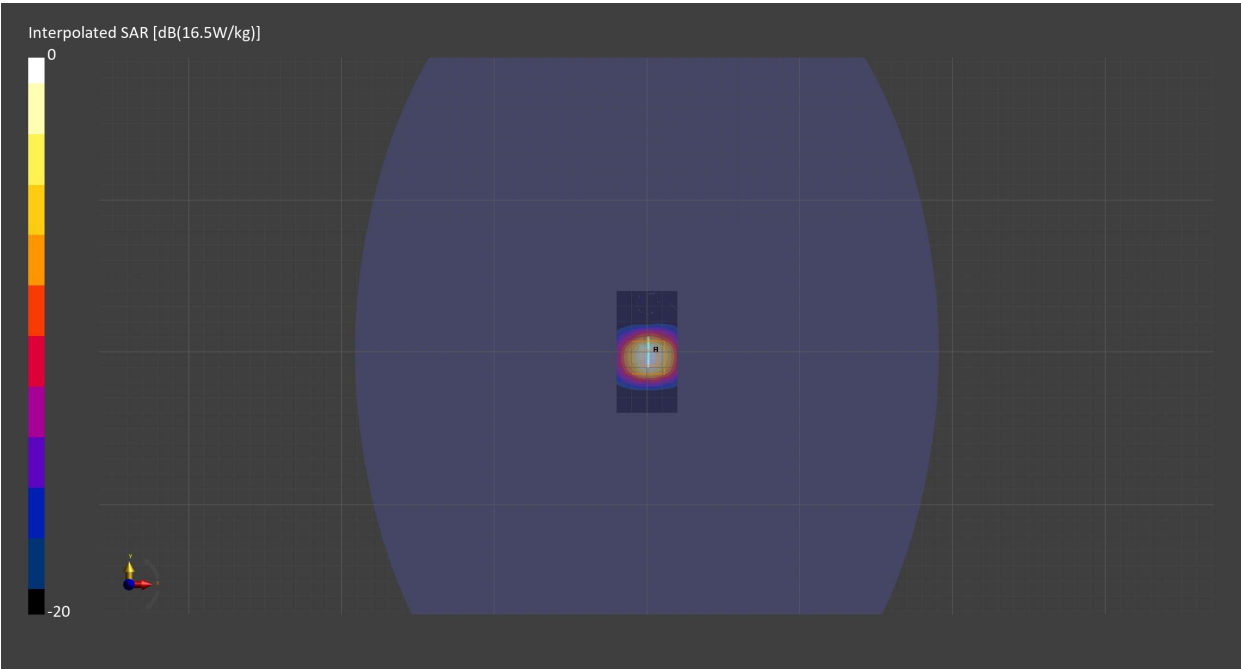
Probe Calibration Date	EX3DV4 - SN7710 2023-02-03	Phantom	ELI V8.0 (20deg probe tilt) - SN2081
DAE Calibration Date	DAE4 Sn1715 2023-01-23	TSL Meas. Date	HBBL-600-10000 2023-Apr-18

Scans Setup

	Area Scan	Zoom Scan
Grid Extents [mm]	40.0 x 80.0	22.0 x 22.0 x 22.0
Grid Steps [mm]	10.0 x 10.0	4.0 x 4.0 x 1.4
Sensor Surface [mm]	3.0	1.4
Graded Grid	n/a	Yes
M2/M1 [%]		60.1
Dist 3dB Peak [mm]		7.6

Measurement Results

	Area Scan	Zoom Scan
psSAR1g [W/Kg]	3.38	3.86
psSAR10g [W/Kg]	1.00	1.09
Power Drift [dB]	0.01	-0.01



2023-04-24 System Performance Check Report D5GHzV2 - SN1213

Summary

Dipole	D5GHzV2 - SN1213		
Frequency [MHz]	5250.0		
Phantom Section TSL	Flat HSL	Dev. Peak [%]	-6.4
Power [dBm]	17.0	Iso. Error [%]	-1.0

Exposure Conditions

Dipole Distance [mm]	10	TSL Permittivity	35.7
Conversion Factor	6.2	TSL Conductivity [S/m]	4.65

Hardware Setup

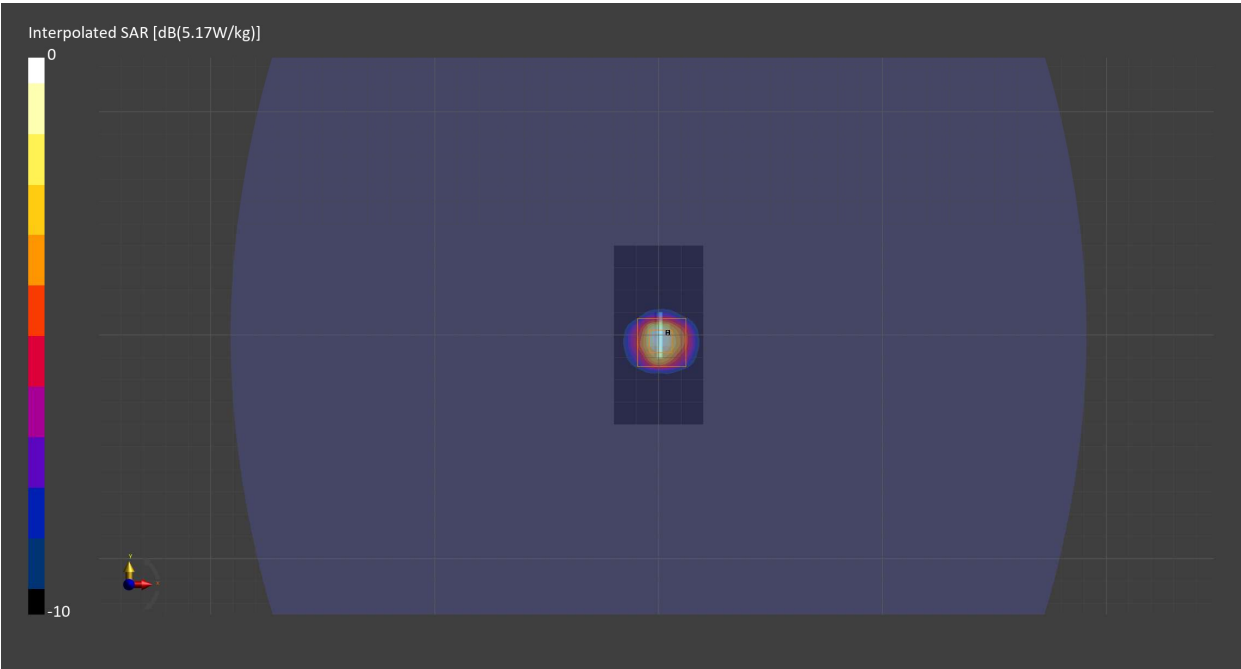
Probe Calibration Date	EX3DV4 - SN7710 2023-02-03	Phantom	ELI V8.0 (20deg probe tilt) - SN2081
DAE Calibration Date	DAE4 Sn1715 2023-01-23	TSL Meas. Date	HBBL-600-10000 2023-Apr-24

Scans Setup

	Area Scan	Zoom Scan
Grid Extents [mm]	40.0 x 80.0	22.0 x 22.0 x 22.0
Grid Steps [mm]	10.0 x 10.0	4.0 x 4.0 x 1.4
Sensor Surface [mm]	3.0	1.4
Graded Grid	n/a	Yes
M2/M1 [%]		64.2
Dist 3dB Peak [mm]		7.2

Measurement Results

	Area Scan	Zoom Scan
psSAR1g [W/Kg]	3.34	3.71
psSAR10g [W/Kg]	0.991	1.05
Power Drift [dB]	-0.01	-0.02



2023-04-24 System Performance Check Report D6.5GHzV2 - SN1068

Summary

Dipole	D6.5GHzV2 - SN1068		
Frequency [MHz]	6500.0		
Phantom Section TSL	Flat HSL	Dev. Peak [%]	-4.6
Power [dBm]	17.0	Iso. Error [%]	-1.2

Exposure Conditions

Dipole Distance [mm]	5	TSL Permittivity	33.5
Conversion Factor	5.38	TSL Conductivity [S/m]	6.08

Hardware Setup

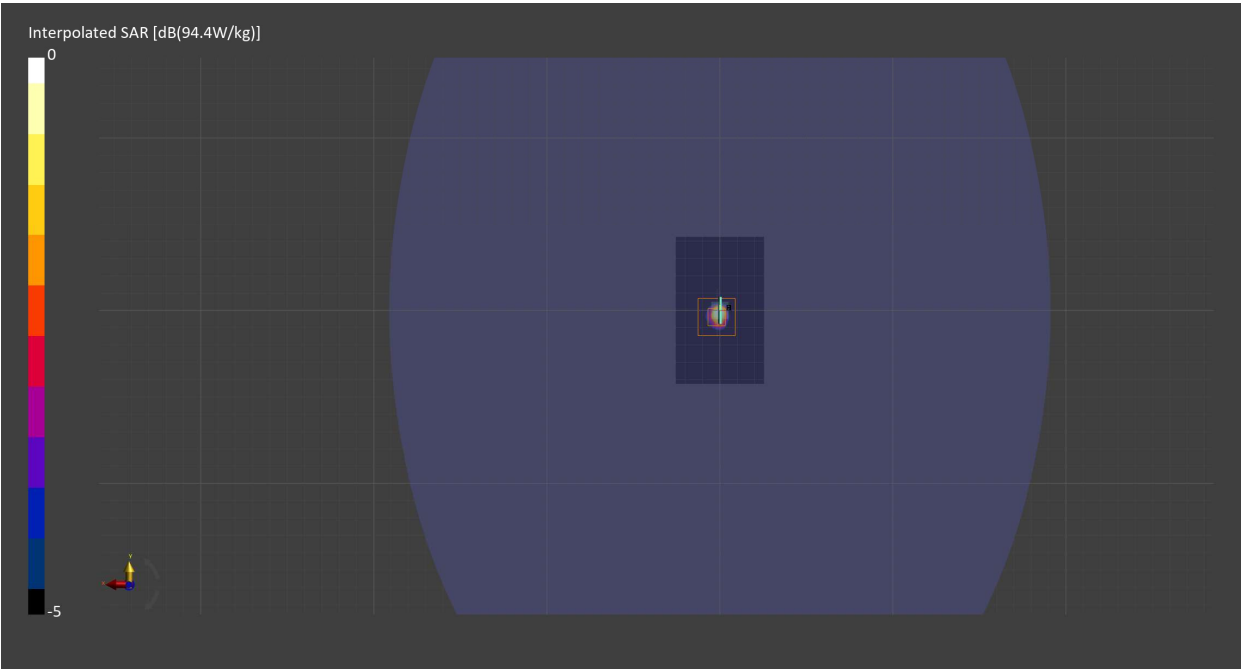
Probe Calibration Date	EX3DV4 - SN7710 2023-02-03	Phantom	ELI V8.0 (20deg probe tilt) - SN2081
DAE Calibration Date	DAE4 Sn1715 2023-01-23	TSL Meas. Date	HBBL-600-10000 2023-Apr-24

Scans Setup

	Area Scan	Zoom Scan
Grid Extents [mm]	51.0 x 85.0	22.0 x 22.0 x 22.0
Grid Steps [mm]	8.5 x 8.5	3.4 x 3.4 x 1.4
Sensor Surface [mm]	3.0	1.4
Graded Grid	n/a	Yes
M2/M1 [%]		50.2
Dist 3dB Peak [mm]		4.9

Measurement Results

	Area Scan	Zoom Scan
psSAR1g [W/Kg]	11.5	14.9
psSAR10g [W/Kg]	2.47	2.77
Power Drift [dB]	0.03	0.02



2023-04-28 System Performance Check Report D5GHzV2 - SN1213

Summary

Dipole	D5GHzV2 - SN1213		
Frequency [MHz]	5750.0		
Phantom Section TSL	Flat HSL	Dev. Peak [%]	-4.4
Power [dBm]	17.0	Iso. Error [%]	1.3

Exposure Conditions

Dipole Distance [mm]	10	TSL Permittivity	34.0
Conversion Factor	5.51	TSL Conductivity [S/m]	5.16

Hardware Setup

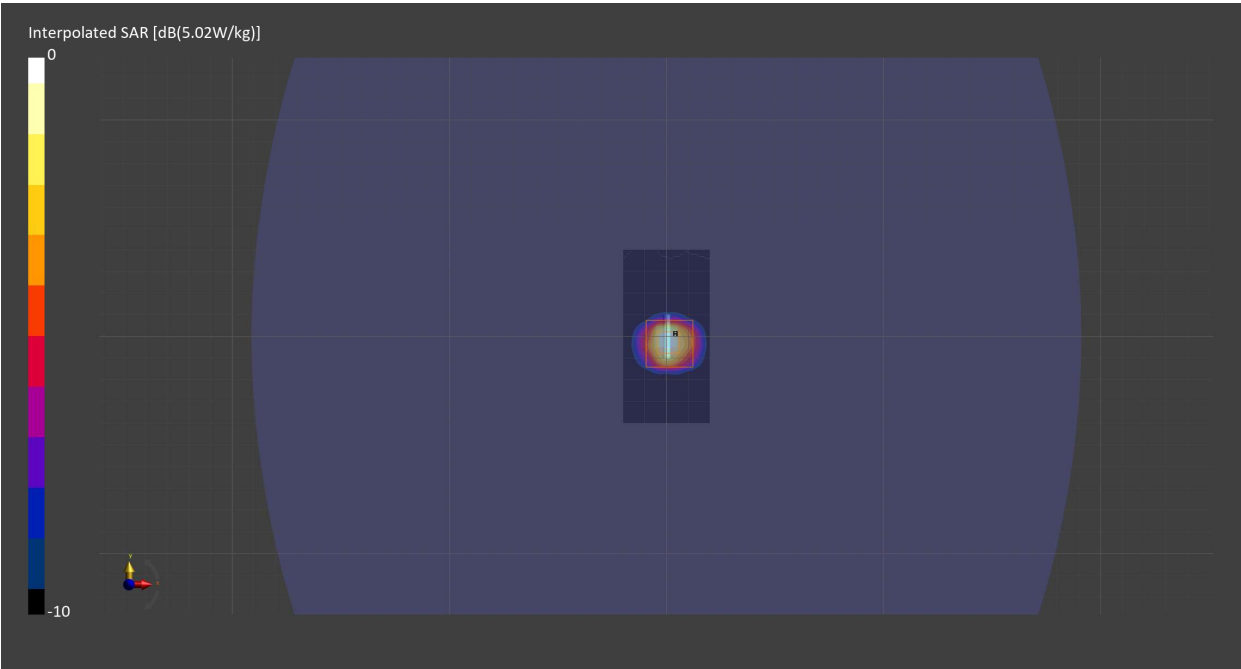
Probe Calibration Date	EX3DV4 - SN7710 2023-02-03	Phantom	ELI V8.0 (20deg probe tilt) - SN2081
DAE Calibration Date	DAE4 Sn1715 2023-01-23	TSL Meas. Date	HBBL-600-10000 2023-Apr-28

Scans Setup

	Area Scan	Zoom Scan
Grid Extents [mm]	40.0 x 80.0	22.0 x 22.0 x 22.0
Grid Steps [mm]	10.0 x 10.0	4.0 x 4.0 x 1.4
Sensor Surface [mm]	3.0	1.4
Graded Grid	n/a	Yes
M2/M1 [%]		61.4
Dist 3dB Peak [mm]		7.6

Measurement Results

	Area Scan	Zoom Scan
psSAR1g [W/Kg]	3.34	3.75
psSAR10g [W/Kg]	0.988	1.06
Power Drift [dB]	-0.00	-0.02



2023-04-04 System Performance Check Report D750V3 - SN1139

Summary

Dipole	D750V3 - SN1139		
Frequency [MHz]	750.0		
Phantom Section TSL	Flat HSL	Dev. Peak [%]	-2.7
Power [dBm]	17.0	Iso. Error [%]	0.6

Exposure Conditions

Dipole Distance [mm]	15	TSL Permittivity	43.5
Conversion Factor	10.14	TSL Conductivity [S/m]	0.908

Hardware Setup

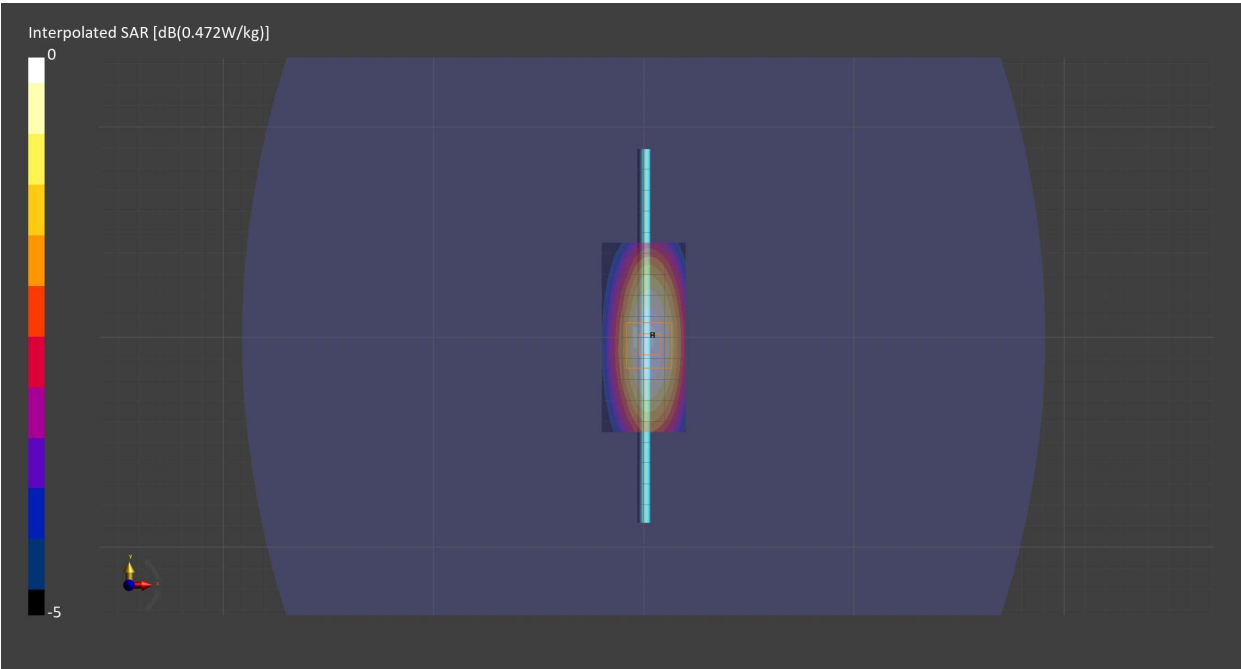
Probe Calibration Date	EX3DV4 - SN7711 2023-03-29	Phantom	ELI V8.0 (20deg probe tilt) - SN2160
DAE Calibration Date	DAE4 Sn1716 2023-03-16	TSL Meas. Date	HBBL-600-10000 2023-Apr-04

Scans Setup

	Area Scan	Zoom Scan
Grid Extents [mm]	40.0 x 90.0	30.0 x 30.0 x 30.0
Grid Steps [mm]	10.0 x 15.0	6.0 x 6.0 x 1.5
Sensor Surface [mm]	3.0	1.4
Graded Grid	n/a	Yes
M2/M1 [%]		88.0
Dist 3dB Peak [mm]		21.3

Measurement Results

	Area Scan	Zoom Scan
psSAR1g [W/Kg]	0.412	0.413
psSAR10g [W/Kg]	0.276	0.274
Power Drift [dB]	-0.00	0.01



2023-04-18 System Performance Check Report D1750V2 - SN1136

Summary

Dipole	D1750V2 - SN1136		
Frequency [MHz]	1750.0		
Phantom Section TSL	Flat HSL	Dev. Peak [%]	0.9
Power [dBm]	17.0	Iso. Error [%]	0.9

Exposure Conditions

Dipole Distance [mm]	10	TSL Permittivity	38.8
Conversion Factor	8.64	TSL Conductivity [S/m]	1.34

Hardware Setup

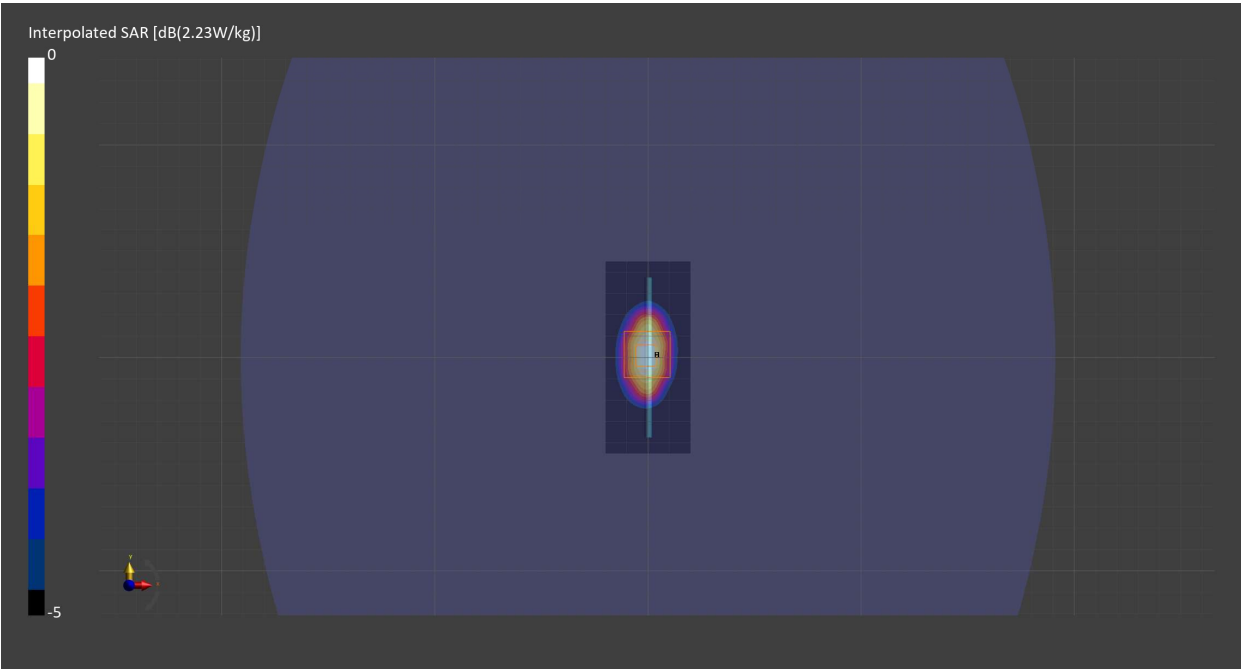
Probe Calibration Date	EX3DV4 - SN7711 2023-03-29	Phantom	ELI V8.0 (20deg probe tilt) - SN2160
DAE Calibration Date	DAE4 Sn1716 2023-03-16	TSL Meas. Date	HBBL-600-10000 2023-Apr-18

Scans Setup

	Area Scan	Zoom Scan
Grid Extents [mm]	40.0 x 90.0	30.0 x 30.0 x 30.0
Grid Steps [mm]	10.0 x 15.0	6.0 x 6.0 x 1.5
Sensor Surface [mm]	3.0	1.4
Graded Grid	n/a	Yes
M2/M1 [%]		83.2
Dist 3dB Peak [mm]		10.9

Measurement Results

	Area Scan	Zoom Scan
psSAR1g [W/Kg]	1.79	1.78
psSAR10g [W/Kg]	0.952	0.949
Power Drift [dB]	-0.02	-0.01



2023-04-18 System Performance Check Report D2600V2 - SN1104

Summary

Dipole	D2600V2 - SN1104		
Frequency [MHz]	2600.0		
Phantom Section TSL	Flat HSL	Dev. Peak [%]	-5.3
Power [dBm]	17.0	Iso. Error [%]	0.6

Exposure Conditions

Dipole Distance [mm]	10	TSL Permittivity	37.4
Conversion Factor	7.67	TSL Conductivity [S/m]	1.92

Hardware Setup

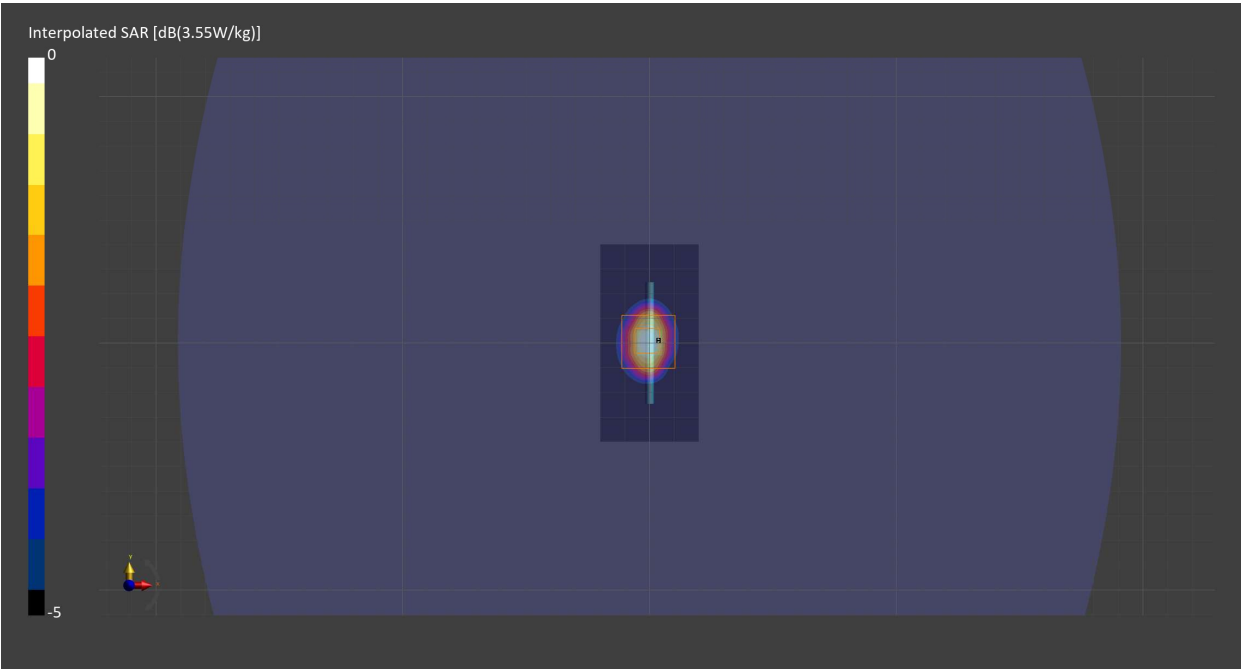
Probe Calibration Date	EX3DV4 - SN7711 2023-03-29	Phantom	ELI V8.0 (20deg probe tilt) - SN2160
DAE Calibration Date	DAE4 Sn1716 2023-03-16	TSL Meas. Date	HBBL-600-10000 2023-Apr-18

Scans Setup

	Area Scan	Zoom Scan
Grid Extents [mm]	40.0 x 80.0	30.0 x 30.0 x 30.0
Grid Steps [mm]	10.0 x 10.0	5.0 x 5.0 x 1.5
Sensor Surface [mm]	3.0	1.4
Graded Grid	n/a	Yes
M2/M1 [%]		79.0
Dist 3dB Peak [mm]		9.1

Measurement Results

	Area Scan	Zoom Scan
psSAR1g [W/Kg]	2.65	2.62
psSAR10g [W/Kg]	1.18	1.18
Power Drift [dB]	-0.05	-0.03



2023-04-24 System Performance Check Report D900V2 - SN1d180

Summary

Dipole	D900V2 - SN1d180		
Frequency [MHz]	900.0		
Phantom Section TSL	Flat HSL	Dev. Peak [%]	-3.2
Power [dBm]	17.0	Iso. Error [%]	-0.7

Exposure Conditions

Dipole Distance [mm]	15	TSL Permittivity	39.9
Conversion Factor	9.5	TSL Conductivity [S/m]	0.941

Hardware Setup

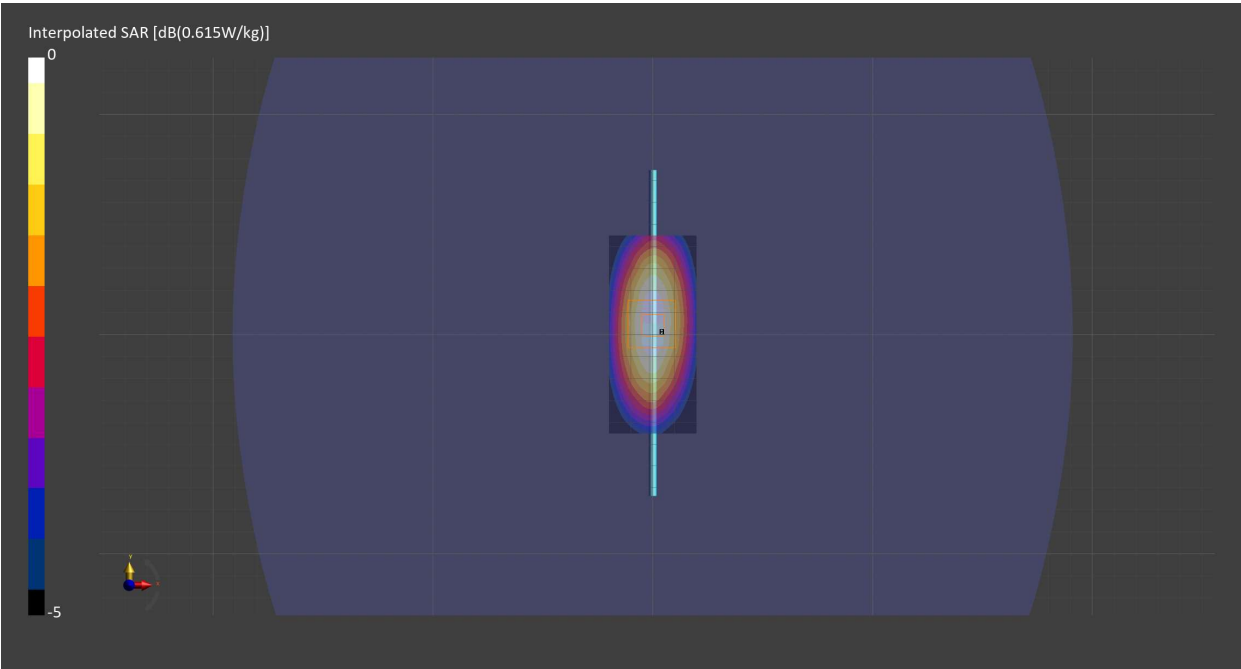
Probe Calibration Date	EX3DV4 - SN7711 2023-03-29	Phantom	ELI V8.0 (20deg probe tilt) - SN2160
DAE Calibration Date	DAE4 Sn1716 2023-03-16	TSL Meas. Date	HBBL-600-10000 2023-Apr-24

Scans Setup

	Area Scan	Zoom Scan
Grid Extents [mm]	40.0 x 90.0	30.0 x 30.0 x 30.0
Grid Steps [mm]	10.0 x 15.0	6.0 x 6.0 x 1.5
Sensor Surface [mm]	3.0	1.4
Graded Grid	n/a	Yes
M2/M1 [%]		88.7
Dist 3dB Peak [mm]		18.8

Measurement Results

	Area Scan	Zoom Scan
psSAR1g [W/Kg]	0.531	0.530
psSAR10g [W/Kg]	0.346	0.345
Power Drift [dB]	-0.02	0.03



2023-05-01 System Performance Check Report D1900V2 - SN5d202

Summary

Dipole	D1900V2 - SN5d202		
Frequency [MHz]	1900.0		
Phantom Section TSL	Flat HSL	Dev. Peak [%]	3.9
Power [dBm]	17.0	Iso. Error [%]	-0.7

Exposure Conditions

Dipole Distance [mm]	10	TSL Permittivity	38.8
Conversion Factor	8.18	TSL Conductivity [S/m]	1.43

Hardware Setup

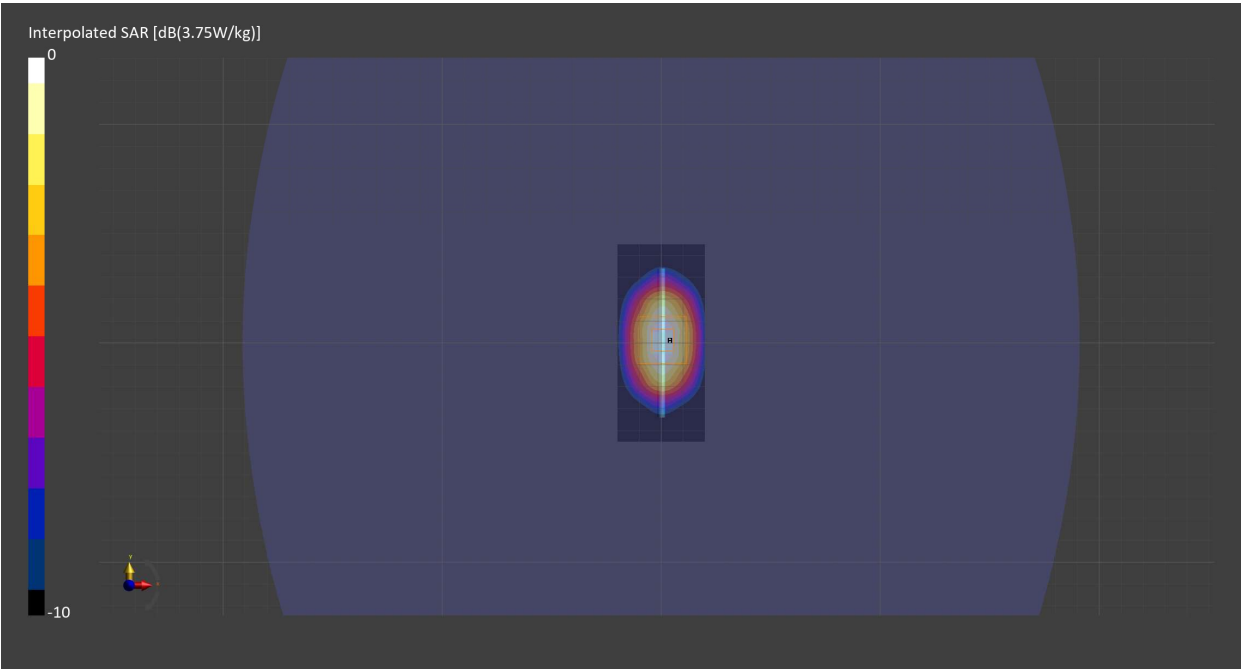
Probe Calibration Date	EX3DV4 - SN7711 2023-03-29	Phantom	ELI V8.0 (20deg probe tilt) - SN2160
DAE Calibration Date	DAE4 Sn1716 2023-03-16	TSL Meas. Date	HBBL-600-10000 2023-May-01

Scans Setup

	Area Scan	Zoom Scan
Grid Extents [mm]	40.0 x 90.0	30.0 x 30.0 x 30.0
Grid Steps [mm]	10.0 x 15.0	6.0 x 6.0 x 1.5
Sensor Surface [mm]	3.0	1.4
Graded Grid	n/a	Yes
M2/M1 [%]		83.4
Dist 3dB Peak [mm]		9.9

Measurement Results

	Area Scan	Zoom Scan
psSAR1g [W/Kg]	2.01	1.99
psSAR10g [W/Kg]	1.04	1.04
Power Drift [dB]	-0.02	0.00



2023-04-13 System Performance Check Report D1900V2 - SN5d202

Summary

Dipole	D1900V2 - SN5d202		
Frequency [MHz]	1900.0		
Phantom Section TSL	Flat HSL	Dev. Peak [%]	9.3
Power [dBm]	17.0	Iso. Error [%]	2.5

Exposure Conditions

Dipole Distance [mm]	10	TSL Permittivity	41.5
Conversion Factor	8.74	TSL Conductivity [S/m]	1.49

Hardware Setup

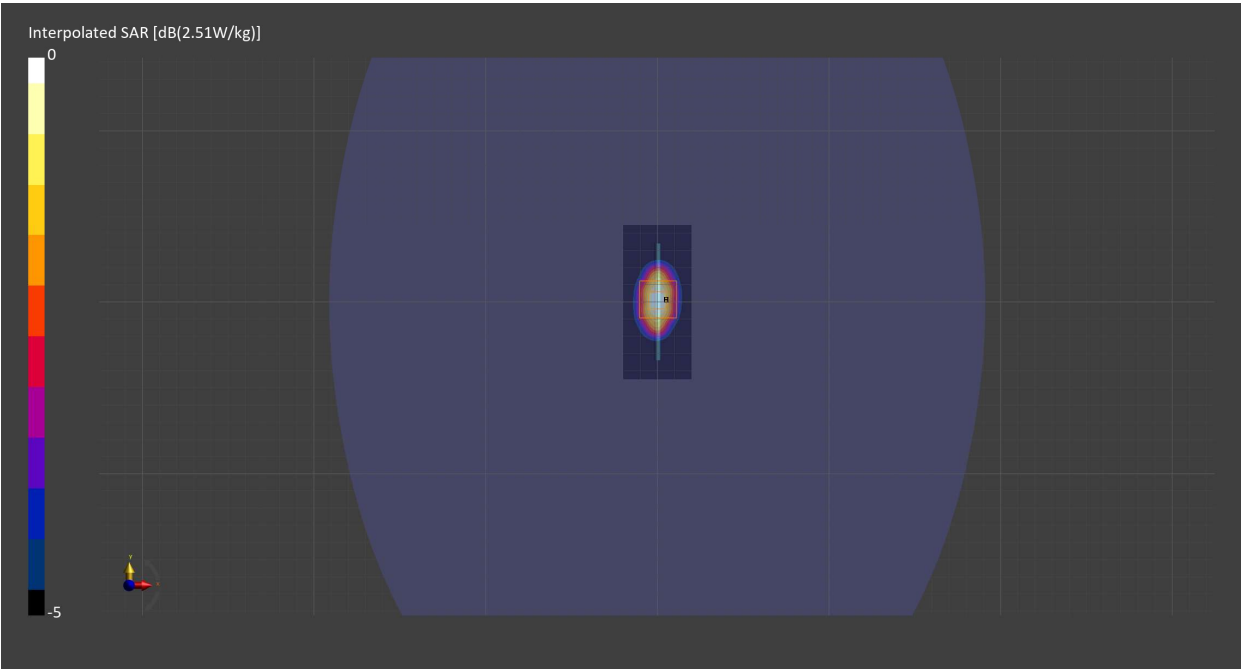
Probe Calibration Date	EX3DV4 - SN7709 2022-12-12	Phantom	ELI V5.0 (20deg probe tilt) - SN1196
DAE Calibration Date	DAE4 Sn1714 2022-11-23	TSL Meas. Date	HBBL-600-10000 2023-Apr-13

Scans Setup

	Area Scan	Zoom Scan
Grid Extents [mm]	40.0 x 90.0	30.0 x 30.0 x 30.0
Grid Steps [mm]	10.0 x 15.0	6.0 x 6.0 x 1.5
Sensor Surface [mm]	3.0	1.4
Graded Grid	n/a	Yes
M2/M1 [%]		79.7
Dist 3dB Peak [mm]		9.7

Measurement Results

	Area Scan	Zoom Scan
psSAR1g [W/Kg]	1.98	2.00
psSAR10g [W/Kg]	1.03	1.04
Power Drift [dB]	-0.01	0.01



2023-04-17 System Performance Check Report D2450V2 - SN963

Summary

Dipole	D2450V2 - SN963		
Frequency [MHz]	2450.0		
Phantom Section TSL	Flat HSL	Dev. Peak [%]	-3.2
Power [dBm]	17.0	Iso. Error [%]	2.3

Exposure Conditions

Dipole Distance [mm]	10	TSL Permittivity	39.8
Conversion Factor	8.6	TSL Conductivity [S/m]	1.88

Hardware Setup

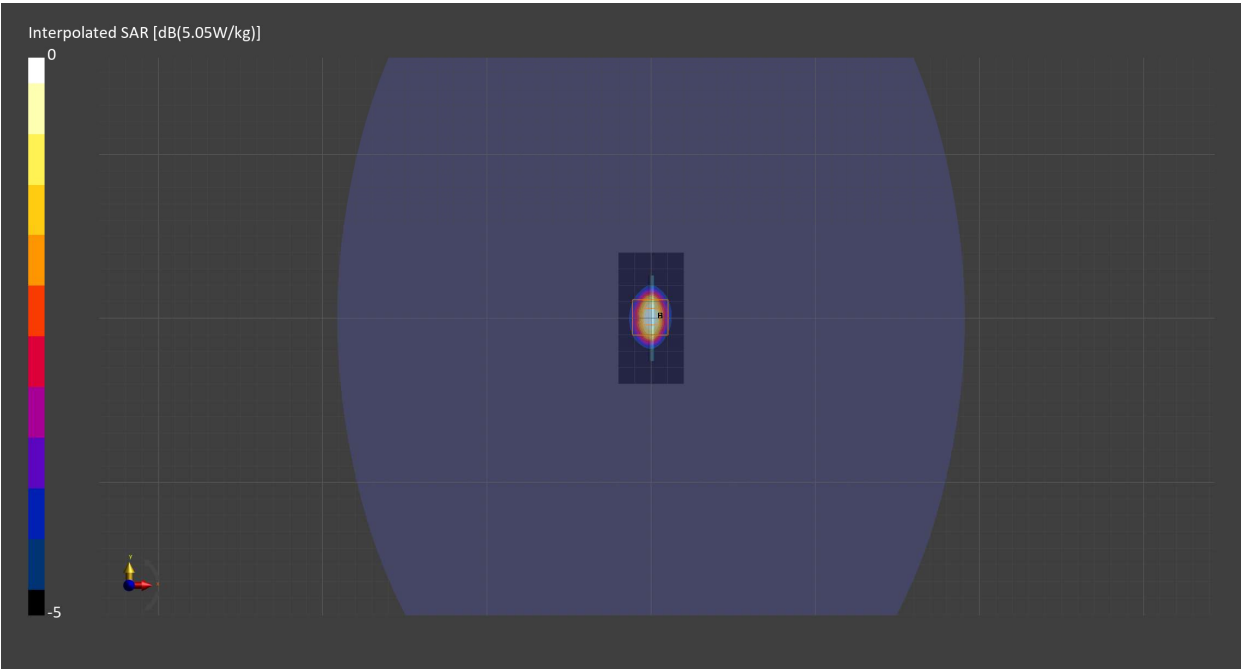
Probe Calibration Date	EX3DV4 - SN7709 2022-12-12	Phantom	ELI V5.0 (20deg probe tilt) - SN1196
DAE Calibration Date	DAE4 Sn1714 2022-11-23	TSL Meas. Date	HBBL-600-10000 2023-Apr-17

Scans Setup

	Area Scan	Zoom Scan
Grid Extents [mm]	40.0 x 80.0	30.0 x 30.0 x 30.0
Grid Steps [mm]	10.0 x 10.0	5.0 x 5.0 x 1.5
Sensor Surface [mm]	3.0	1.4
Graded Grid	n/a	Yes
M2/M1 [%]		79.2
Dist 3dB Peak [mm]		9.1

Measurement Results

	Area Scan	Zoom Scan
psSAR1g [W/Kg]	2.41	2.40
psSAR10g [W/Kg]	1.12	1.12
Power Drift [dB]	-0.01	-0.01



2023-04-18 System Performance Check Report D5GHzV2 - SN1213

Summary

Dipole	D5GHzV2 - SN1213		
Frequency [MHz]	5250.0		
Phantom Section TSL	Flat HSL	Dev. Peak [%]	-8.5
Power [dBm]	17.0	Iso. Error [%]	2.8

Exposure Conditions

Dipole Distance [mm]	10	TSL Permittivity	35.1
Conversion Factor	5.9	TSL Conductivity [S/m]	4.55

Hardware Setup

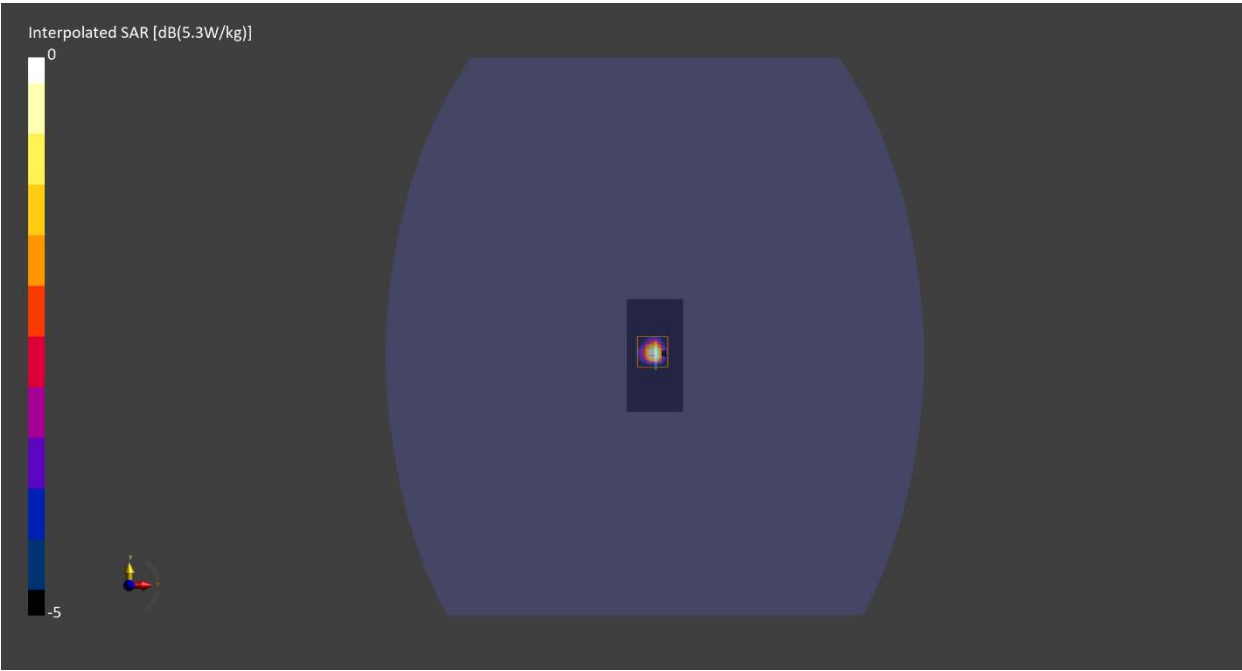
Probe Calibration Date	EX3DV4 - SN7709 2022-12-12	Phantom	ELI V5.0 (20deg probe tilt) - SN1196
DAE Calibration Date	DAE4 Sn1714 2022-11-23	TSL Meas. Date	HBBL-600-10000 2023-Apr-18

Scans Setup

	Area Scan	Zoom Scan
Grid Extents [mm]	40.0 x 80.0	22.0 x 22.0 x 22.0
Grid Steps [mm]	10.0 x 10.0	4.0 x 4.0 x 1.4
Sensor Surface [mm]	3.0	1.4
Graded Grid	n/a	Yes
M2/M1 [%]		64.7
Dist 3dB Peak [mm]		7.2

Measurement Results

	Area Scan	Zoom Scan
psSAR1g [W/Kg]	3.40	3.71
psSAR10g [W/Kg]	1.01	1.06
Power Drift [dB]	-0.01	-0.01



2023-04-18 System Performance Check Report D5GHzV2 - SN1213

Summary

Dipole	D5GHzV2 - SN1213		
Frequency [MHz]	5750.0		
Phantom Section TSL	Flat HSL	Dev. Peak [%]	-3.9
Power [dBm]	17.0	Iso. Error [%]	-2.7

Exposure Conditions

Dipole Distance [mm]	10	TSL Permittivity	34.2
Conversion Factor	5.4	TSL Conductivity [S/m]	5.10

Hardware Setup

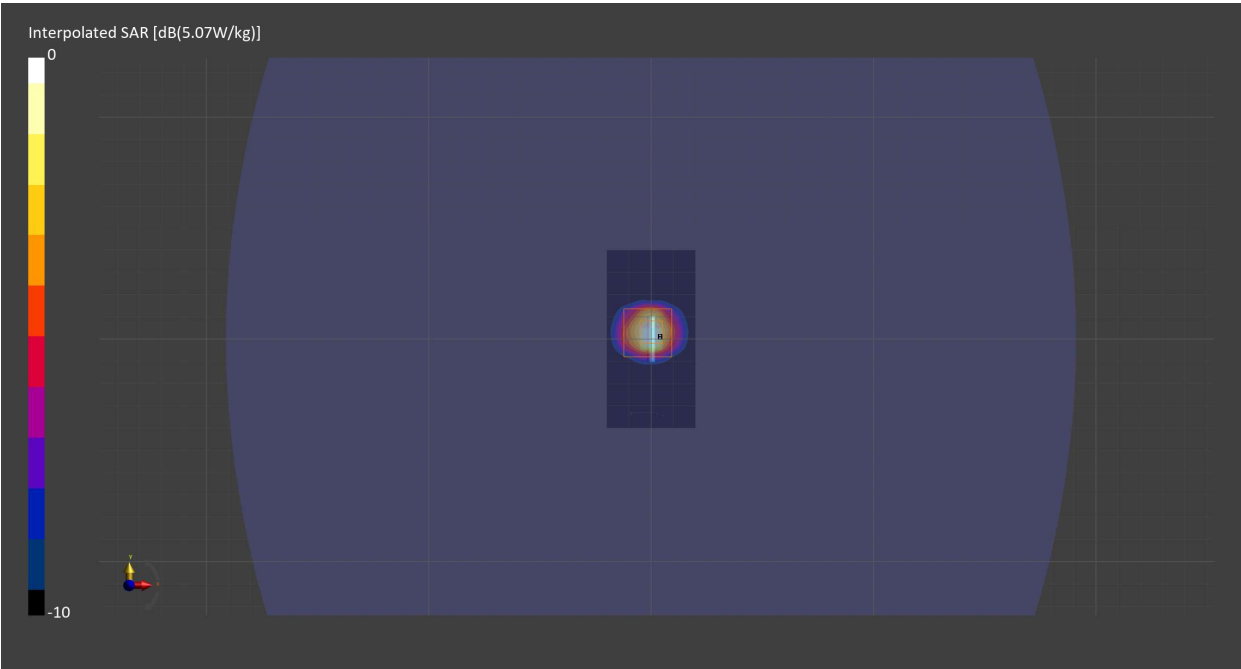
Probe Calibration Date	EX3DV4 - SN7709 2022-12-12	Phantom	ELI V5.0 (20deg probe tilt) - SN1196
DAE Calibration Date	DAE4 Sn1714 2022-11-23	TSL Meas. Date	HBBL-600-10000 2023-Apr-18

Scans Setup

	Area Scan	Zoom Scan
Grid Extents [mm]	40.0 x 80.0	22.0 x 22.0 x 22.0
Grid Steps [mm]	10.0 x 10.0	4.0 x 4.0 x 1.4
Sensor Surface [mm]	3.0	1.4
Graded Grid	n/a	Yes
M2/M1 [%]		60.6
Dist 3dB Peak [mm]		7.2

Measurement Results

	Area Scan	Zoom Scan
psSAR1g [W/Kg]	3.38	3.62
psSAR10g [W/Kg]	0.995	1.02
Power Drift [dB]	-0.00	-0.00



2023-04-25 System Performance Check Report D2600V2 - SN1104

Summary

Dipole	D2600V2 - SN1104		
Frequency [MHz]	2600.0		
Phantom Section TSL	Flat HSL	Dev. Peak [%]	-1.6
Power [dBm]	17.0	Iso. Error [%]	-2.4

Exposure Conditions

Dipole Distance [mm]	10	TSL Permittivity	38.3
Conversion Factor	8.2	TSL Conductivity [S/m]	2.00

Hardware Setup

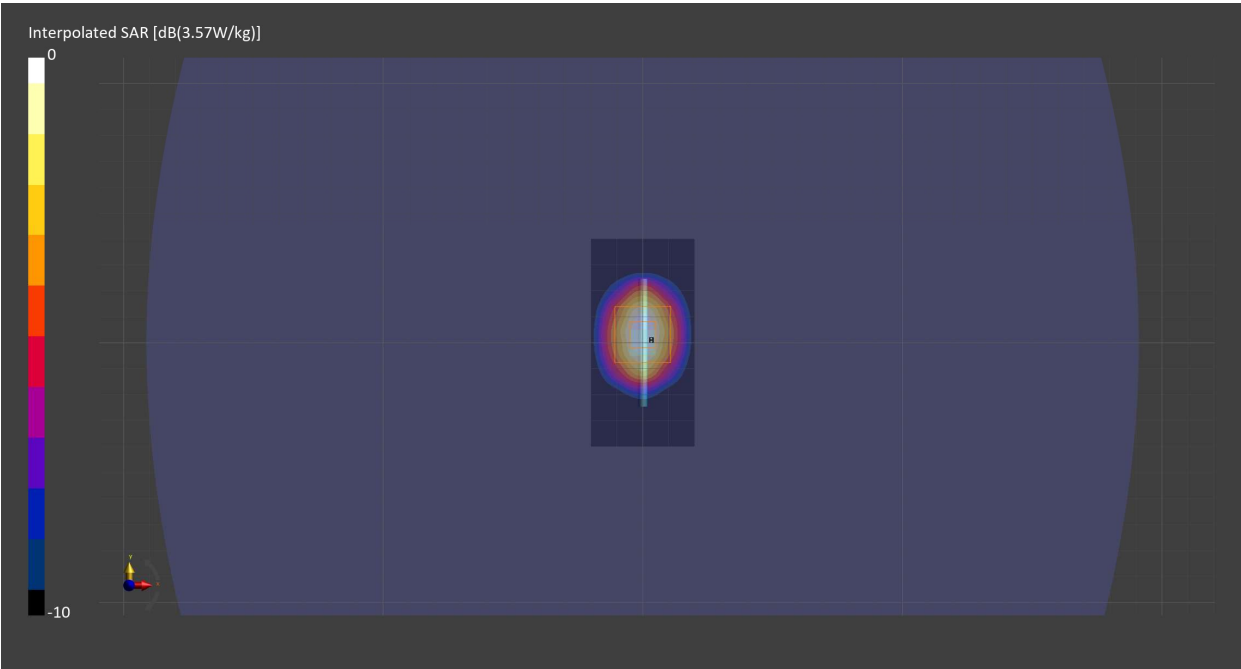
Probe Calibration Date	EX3DV4 - SN7709 2022-12-12	Phantom	ELI V5.0 (20deg probe tilt) - SN1196
DAE Calibration Date	DAE4 Sn1714 2022-11-23	TSL Meas. Date	HBBL-600-10000 2023-Apr-25

Scans Setup

	Area Scan	Zoom Scan
Grid Extents [mm]	40.0 x 80.0	30.0 x 30.0 x 30.0
Grid Steps [mm]	10.0 x 10.0	5.0 x 5.0 x 1.5
Sensor Surface [mm]	3.0	1.4
Graded Grid	n/a	Yes
M2/M1 [%]		78.6
Dist 3dB Peak [mm]		9.0

Measurement Results

	Area Scan	Zoom Scan
psSAR1g [W/Kg]	2.70	2.64
psSAR10g [W/Kg]	1.21	1.17
Power Drift [dB]	-0.00	-0.00



2023-04-26 System Performance Check Report D5GHzV2 - SN1213

Summary

Dipole	D5GHzV2 - SN1213		
Frequency [MHz]	5600.0		
Phantom Section TSL	Flat HSL	Dev. Peak [%]	5.9
Power [dBm]	17.0	Iso. Error [%]	-2.9

Exposure Conditions

Dipole Distance [mm]	10	TSL Permittivity	34.4
Conversion Factor	5.09	TSL Conductivity [S/m]	5.01

Hardware Setup

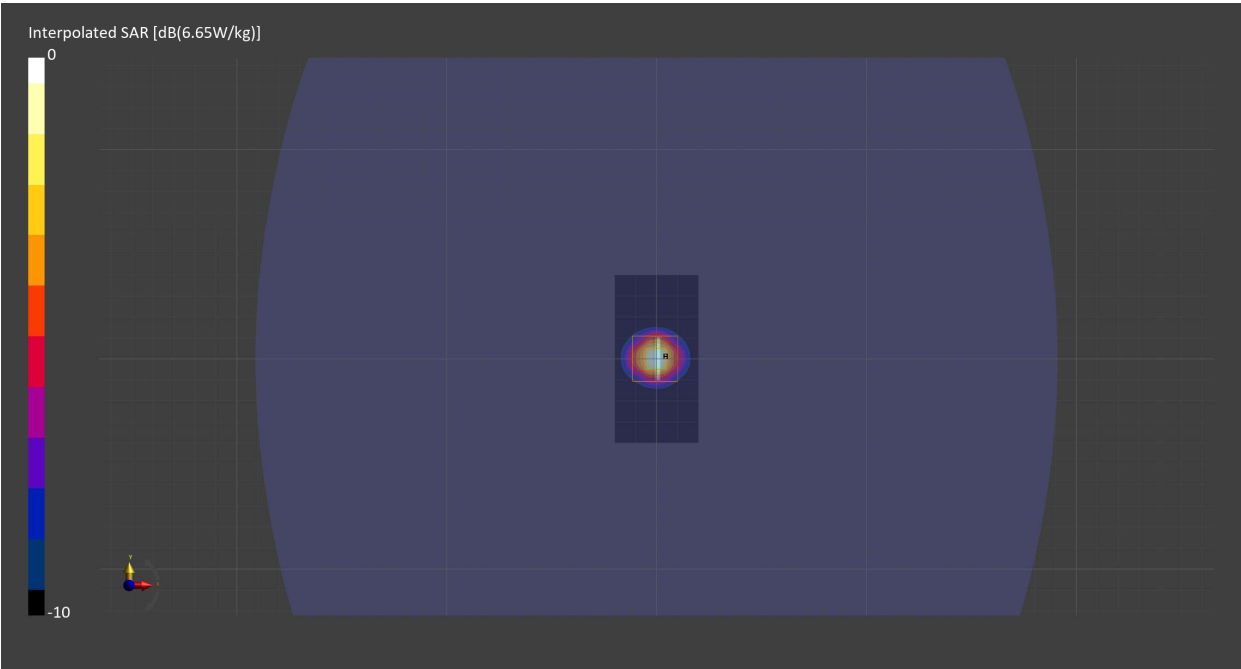
Probe Calibration Date	EX3DV4 - SN7709 2022-12-12	Phantom	ELI V5.0 (20deg probe tilt) - SN1196
DAE Calibration Date	DAE4 Sn1714 2022-11-23	TSL Meas. Date	HBBL-600-10000 2023-Apr-26

Scans Setup

	Area Scan	Zoom Scan
Grid Extents [mm]	40.0 x 80.0	22.0 x 22.0 x 22.0
Grid Steps [mm]	10.0 x 10.0	4.0 x 4.0 x 1.4
Sensor Surface [mm]	3.0	1.4
Graded Grid	n/a	Yes
M2/M1 [%]		61.9
Dist 3dB Peak [mm]		6.9

Measurement Results

	Area Scan	Zoom Scan
psSAR1g [W/Kg]	4.09	4.18
psSAR10g [W/Kg]	1.14	1.17
Power Drift [dB]	-0.01	0.01



2023-05-03 System Performance Check Report D1750V2 - SN1136

Summary

Dipole	D1750V2 - SN1136		
Frequency [MHz]	1750.0		
Phantom Section TSL	Flat HSL	Dev. Peak [%]	-2.1
Power [dBm]	17.0	Iso. Error [%]	2.4

Exposure Conditions

Dipole Distance [mm]	10	TSL Permittivity	41.6
Conversion Factor	9.05	TSL Conductivity [S/m]	1.39

Hardware Setup

Probe Calibration Date	EX3DV4 - SN7709 2022-12-12	Phantom	ELI V5.0 (20deg probe tilt) - SN1196
DAE Calibration Date	DAE4 Sn1714 2022-11-23	TSL Meas. Date	HBBL-600-10000 2023-May-03

Scans Setup

	Area Scan	Zoom Scan
Grid Extents [mm]	40.0 x 90.0	30.0 x 30.0 x 30.0
Grid Steps [mm]	10.0 x 15.0	6.0 x 6.0 x 1.5
Sensor Surface [mm]	3.0	1.4
Graded Grid	n/a	Yes
M2/M1 [%]		83.9
Dist 3dB Peak [mm]		10.8

Measurement Results

	Area Scan	Zoom Scan
psSAR1g [W/Kg]	1.75	1.73
psSAR10g [W/Kg]	0.931	0.920
Power Drift [dB]	-0.01	0.01

