



Internal Photo

Applicant : SAMSUNG ELECTRONICS CO., LTD.
129 SAMSUNG-RO, YEONGTONG-GU, SUWON-SI,
GYEONGGI-DO, 16677, KOREA

Model : SM-X716B

FCC ID : A3LSMX716B

Date Of Issue:

2023-04-26

Prepared by:

UL Korea, Ltd.

26th floor, 152, Teheran-ro, Gangnam-gu Seoul, 06236, Korea

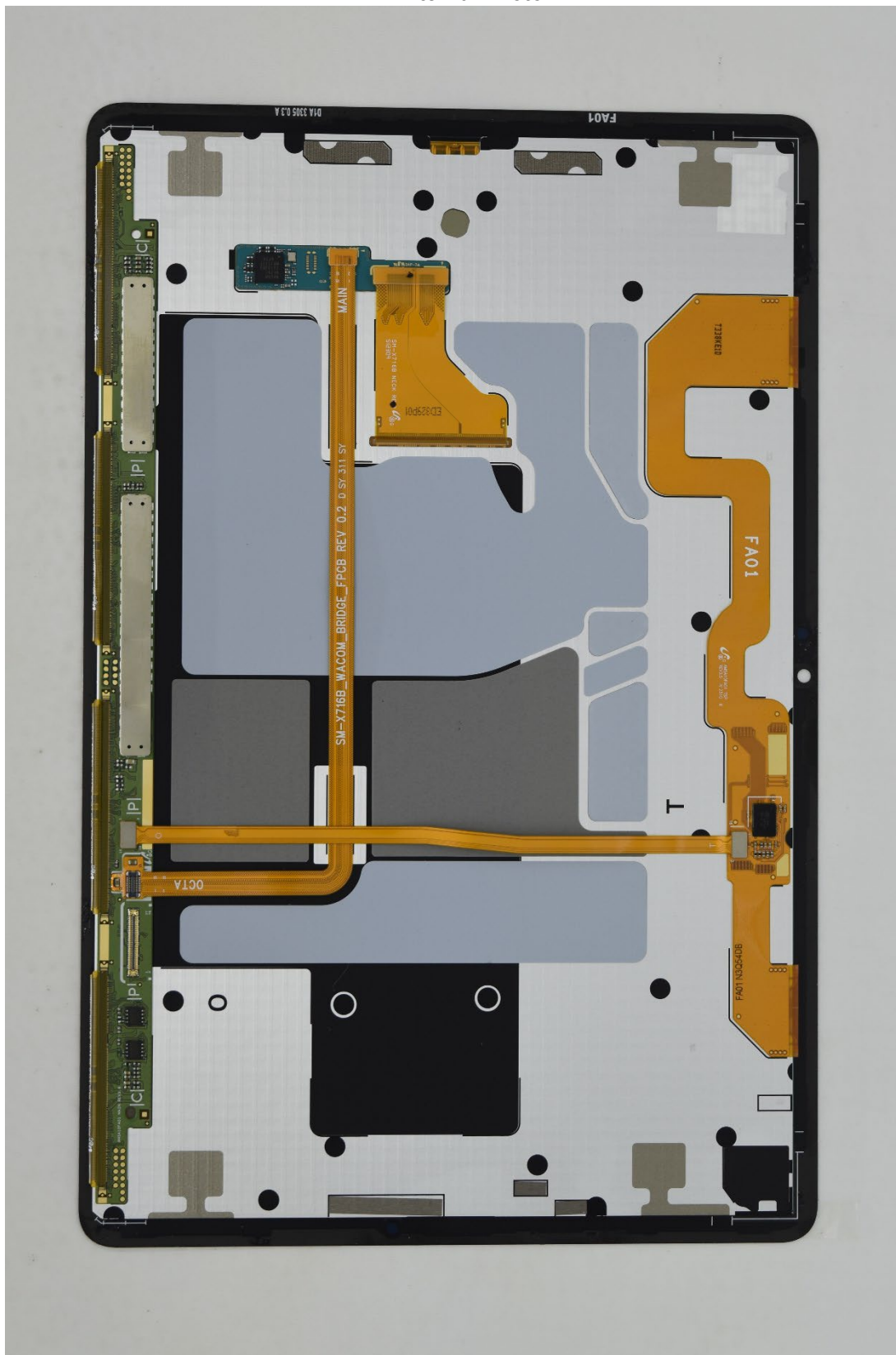
Suwon Test Site: UL Korea, Ltd. Suwon Laboratory

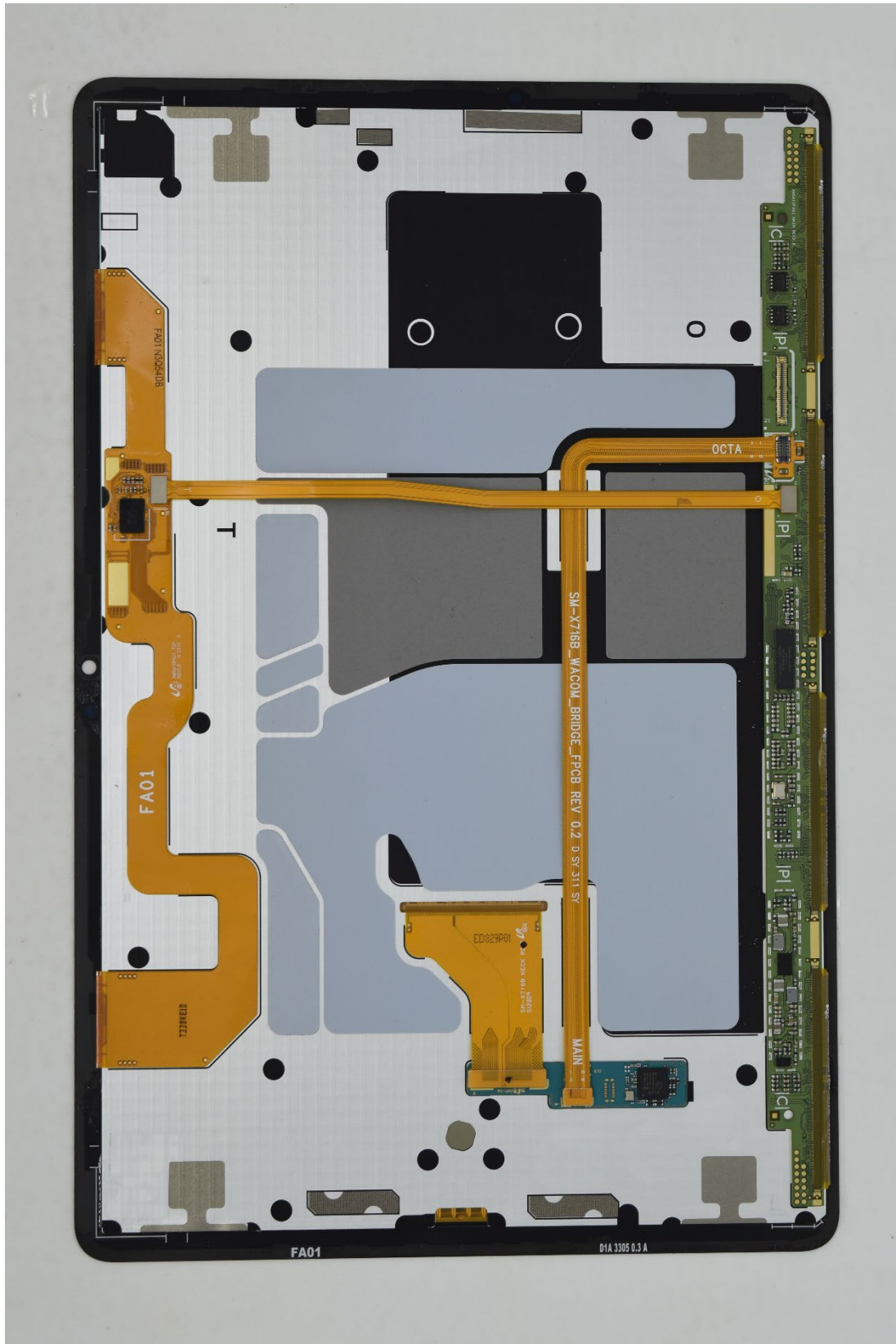
218 Maeyeong-ro, Yeongtong-gu,
Suwon-si, Gyeonggi-do, 16675, Korea

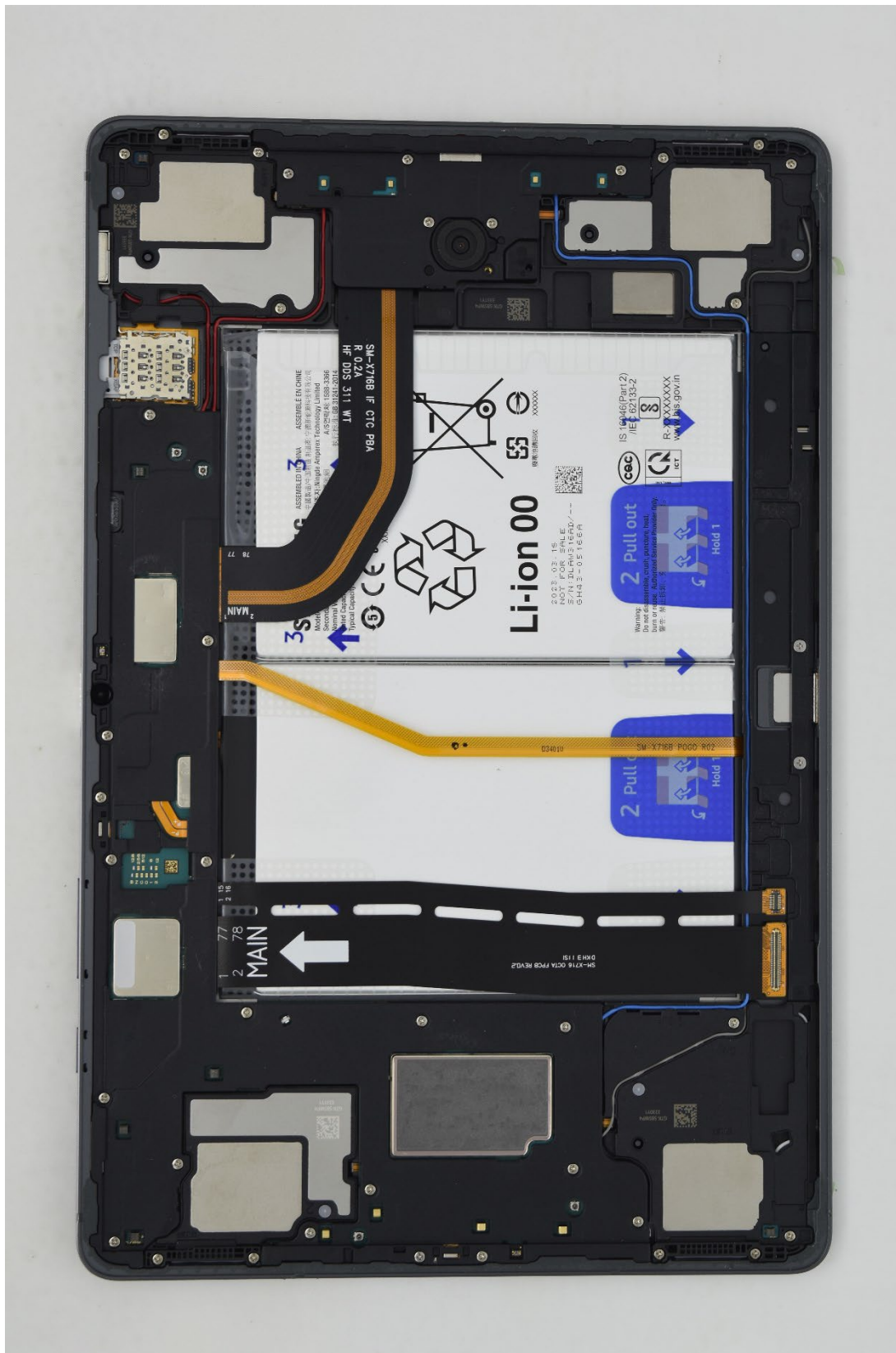
TEL: (031) 337-9902

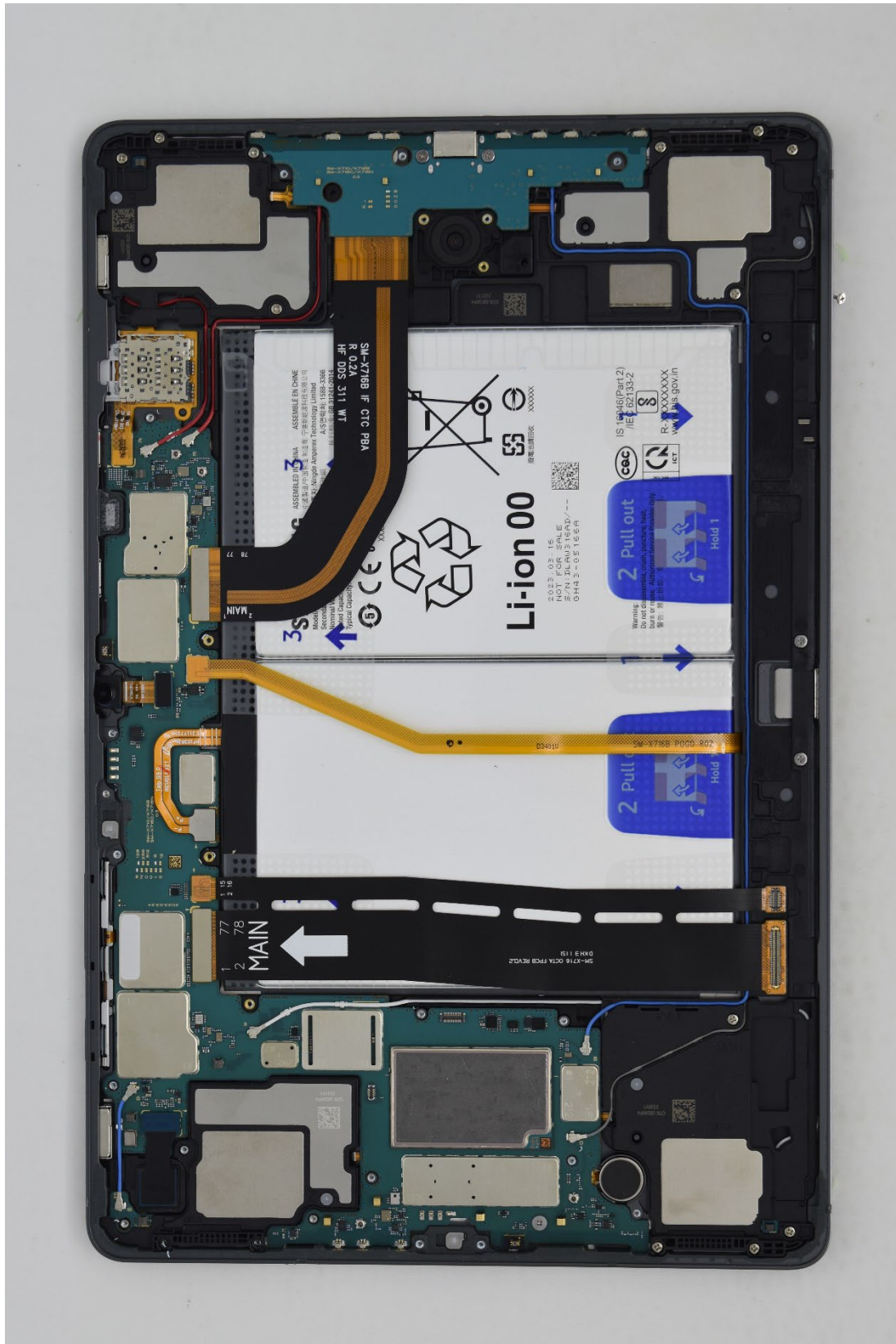
FAX: (031) 213-5433

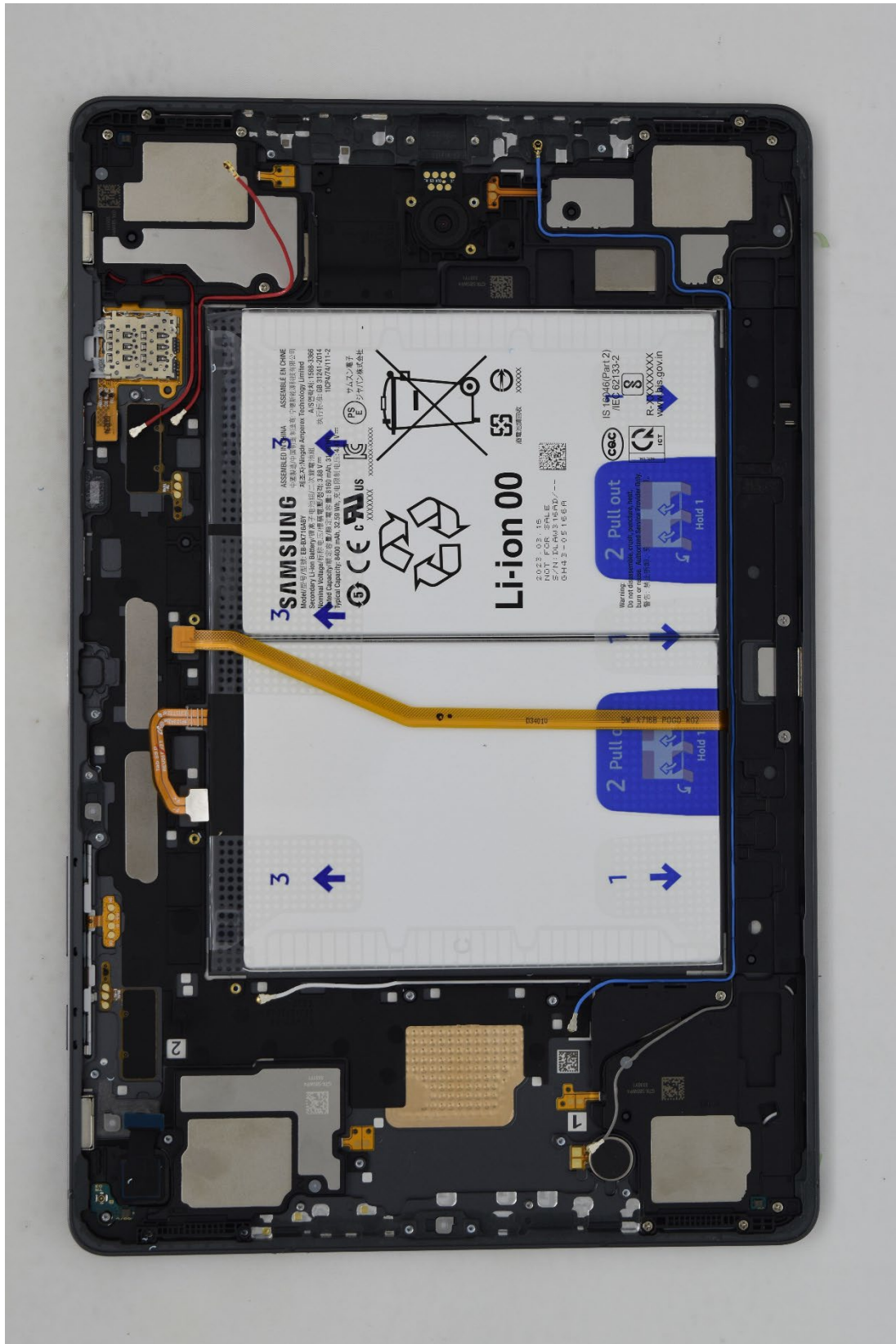
Internal Photo

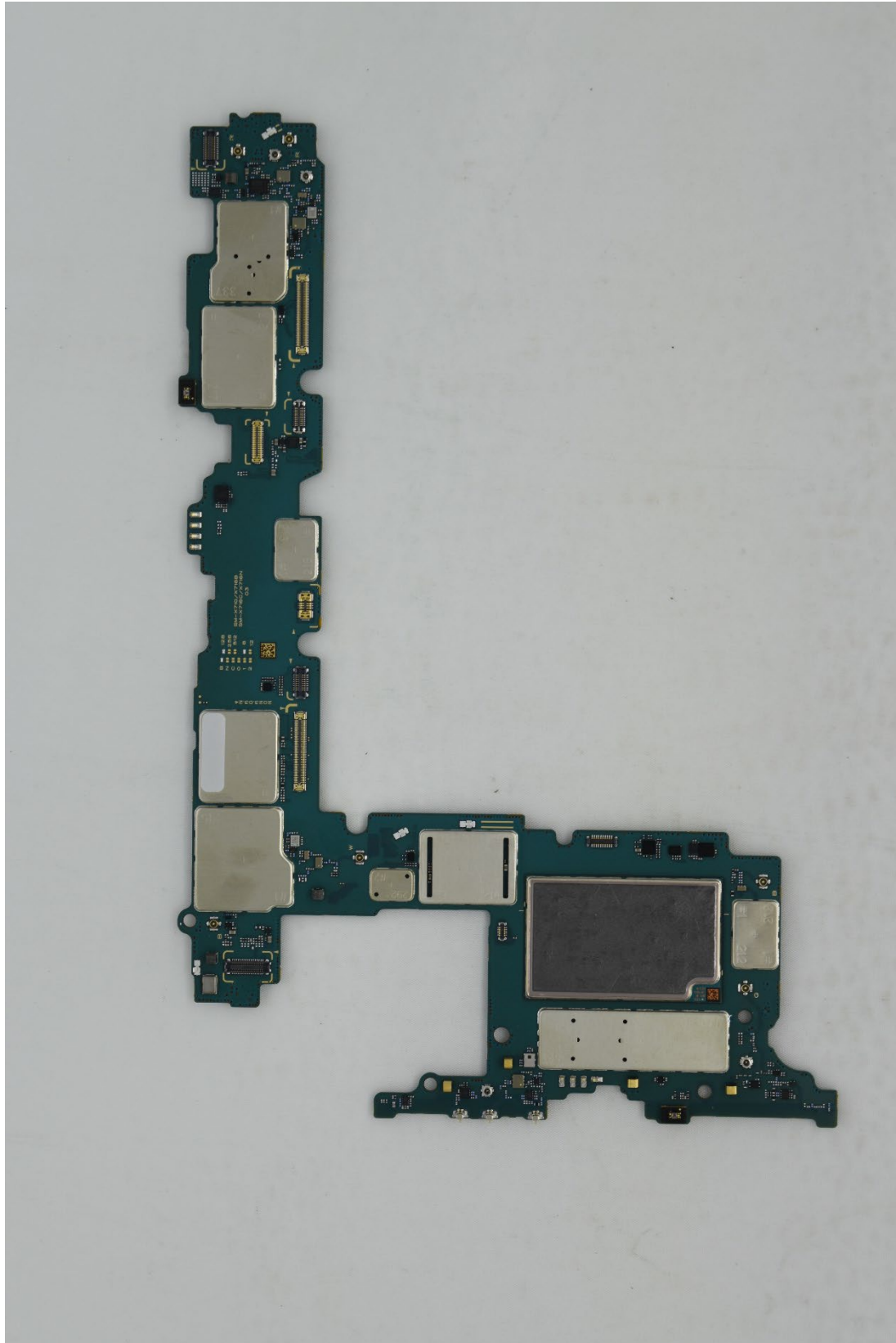


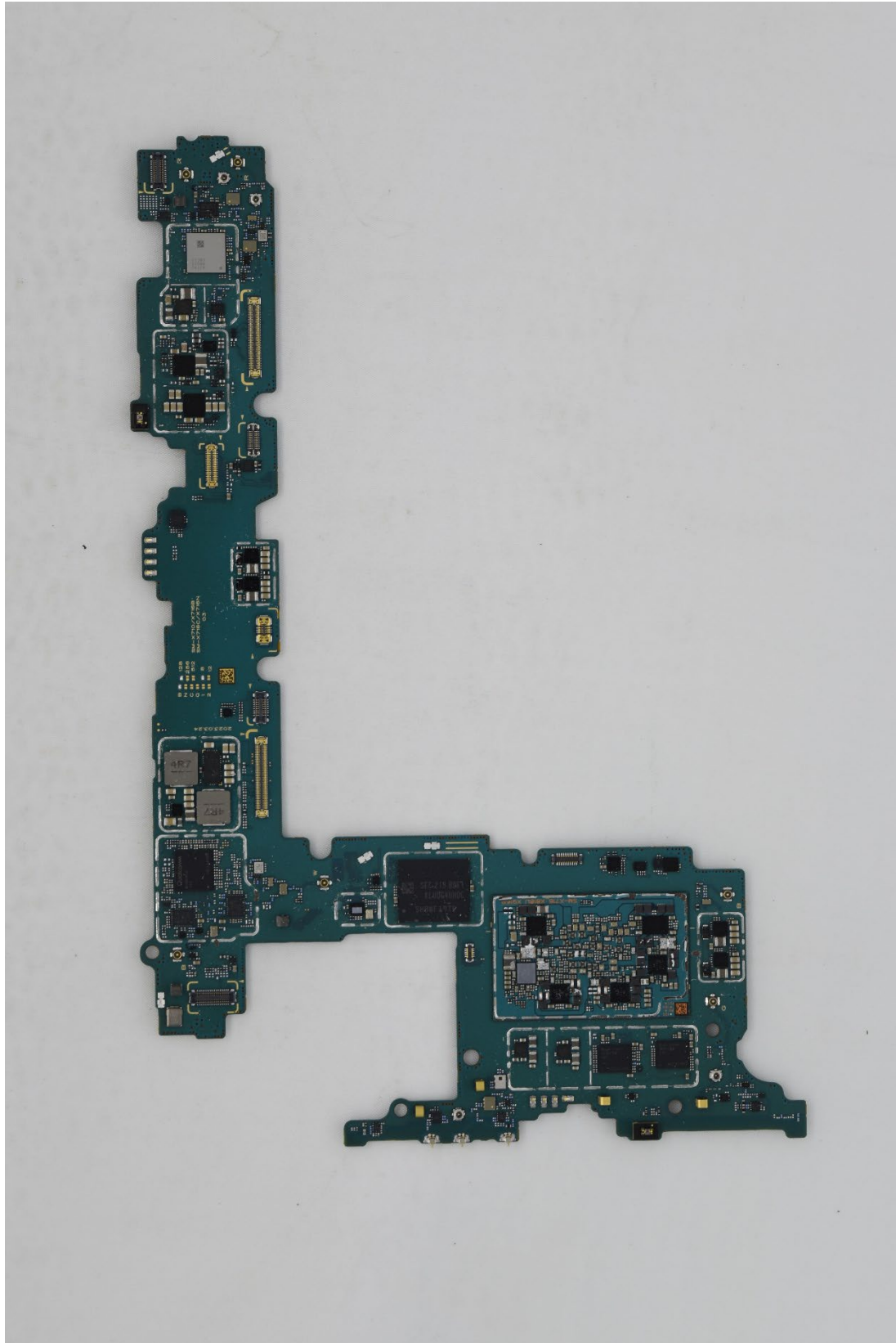


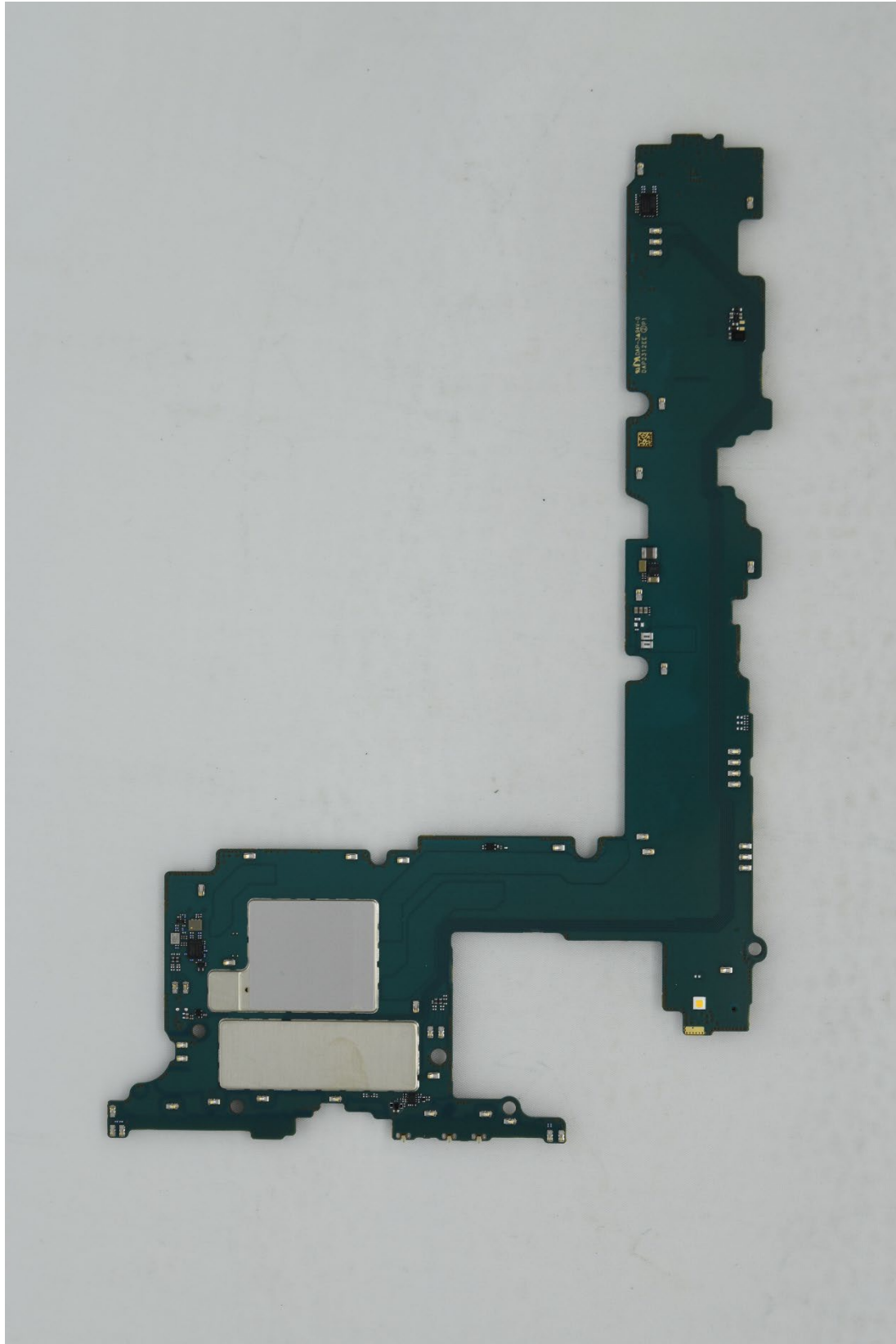


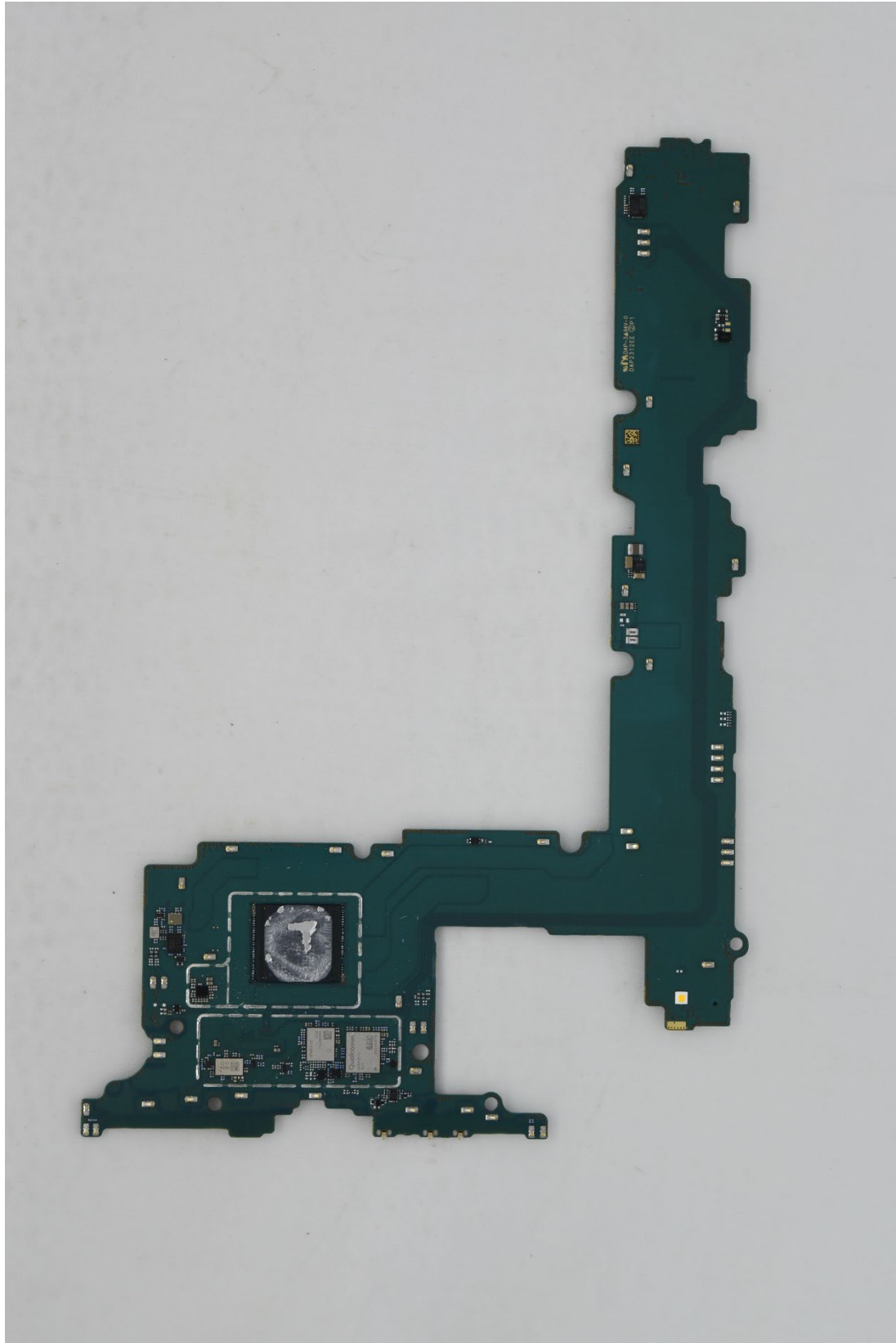


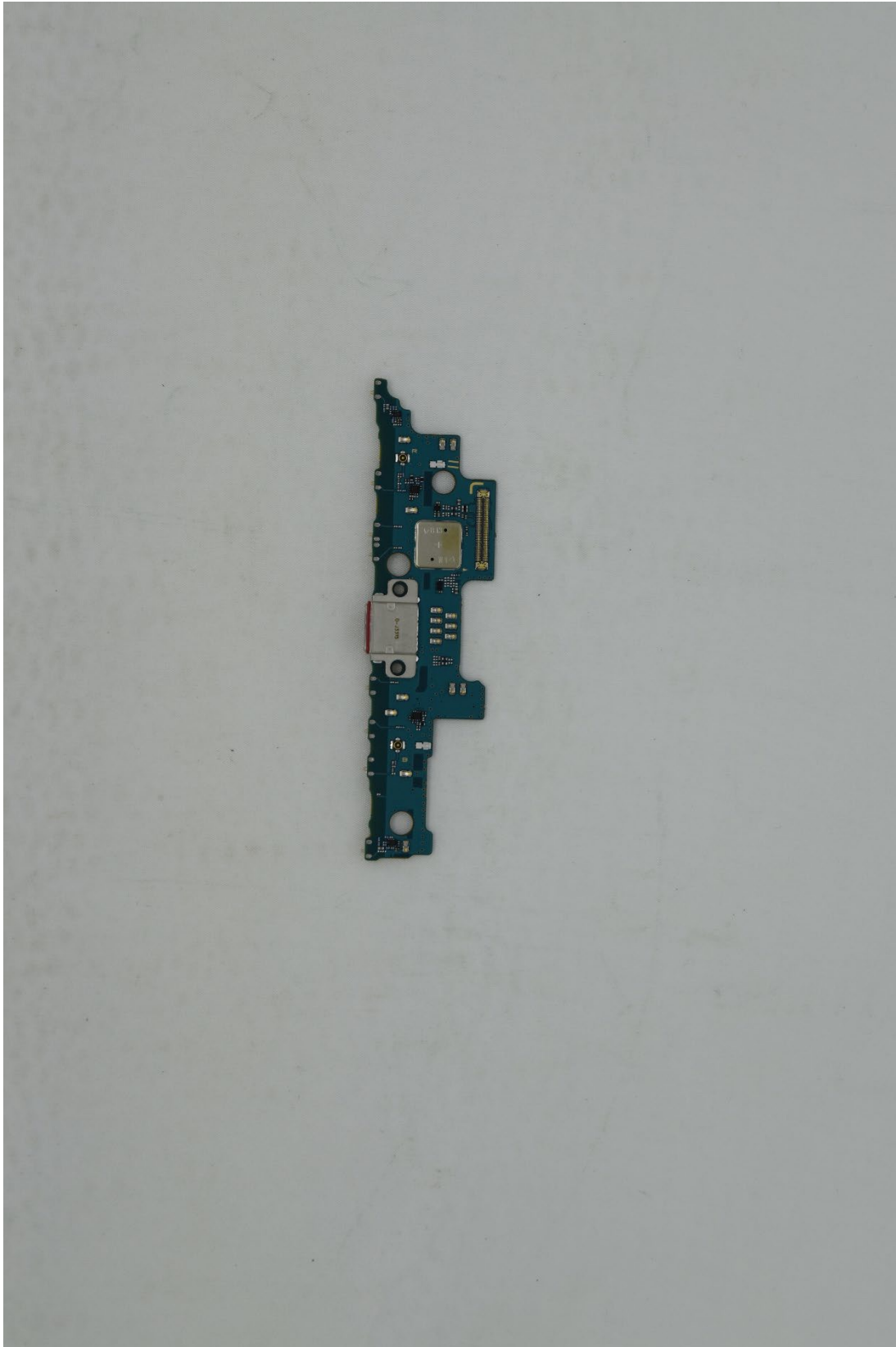


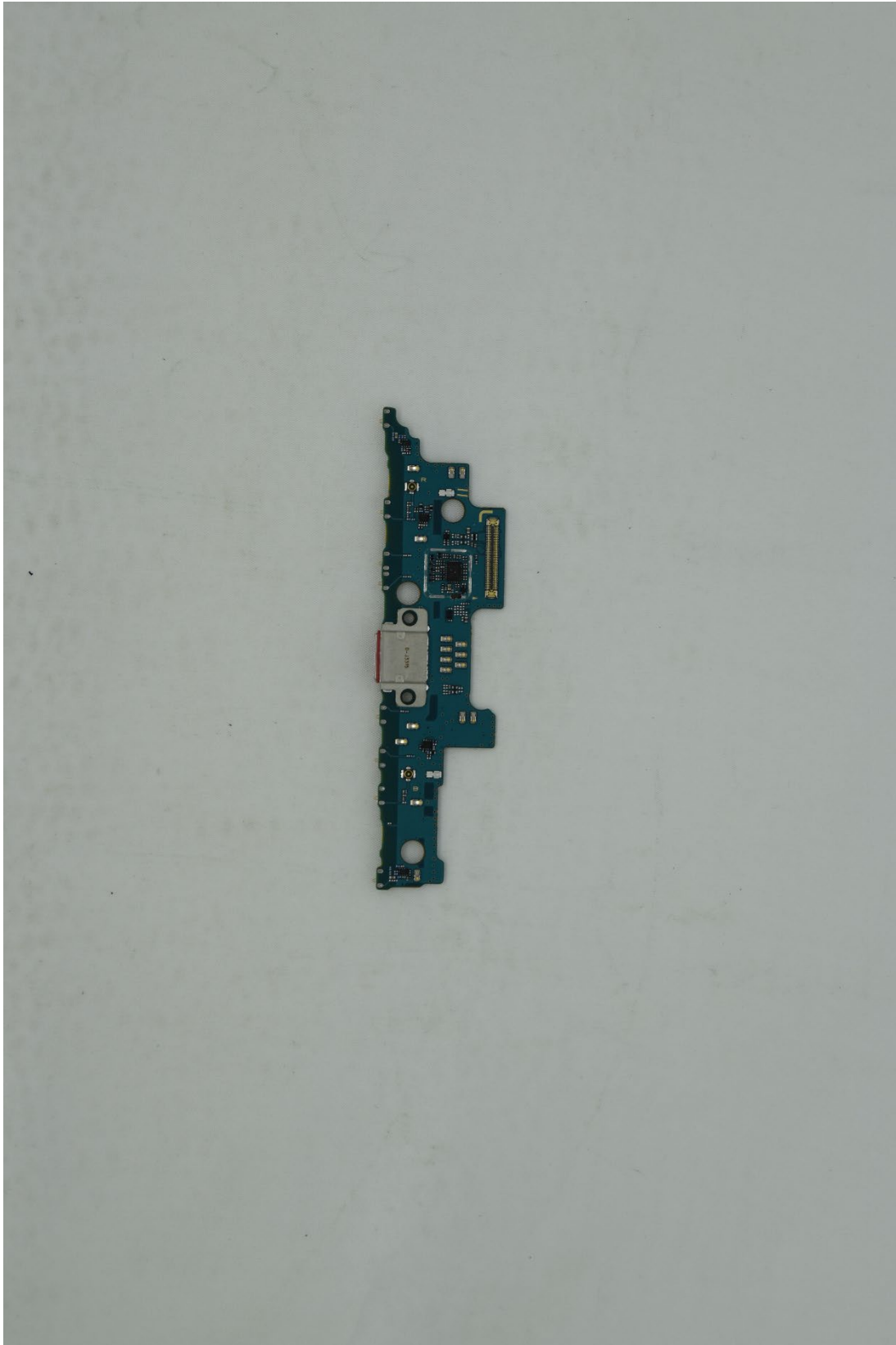


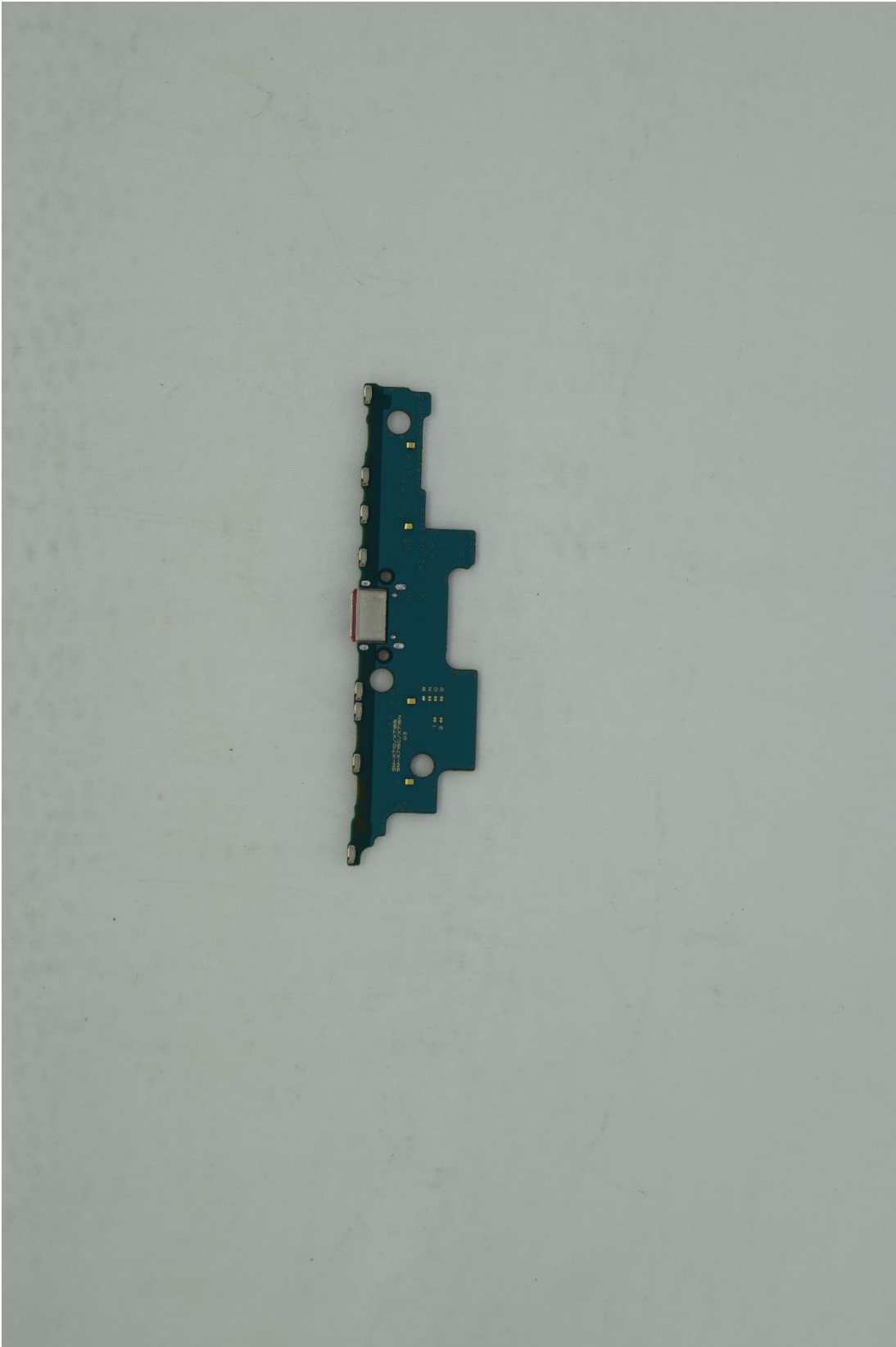












The End