

2023-05-08 System Performance Check Report D5GHzV2 - SN1213

Summary

Dipole	D5GHzV2 - SN1213		
Frequency [MHz]	5250.0		
Phantom Section TSL	Flat HSL	Dev. Peak [%]	-2.9
Power [dBm]	17.0	Iso. Error [%]	0.5

Exposure Conditions

Dipole Distance [mm]	10	TSL Permittivity	34.8
Conversion Factor	6.01	TSL Conductivity [S/m]	4.51

Hardware Setup

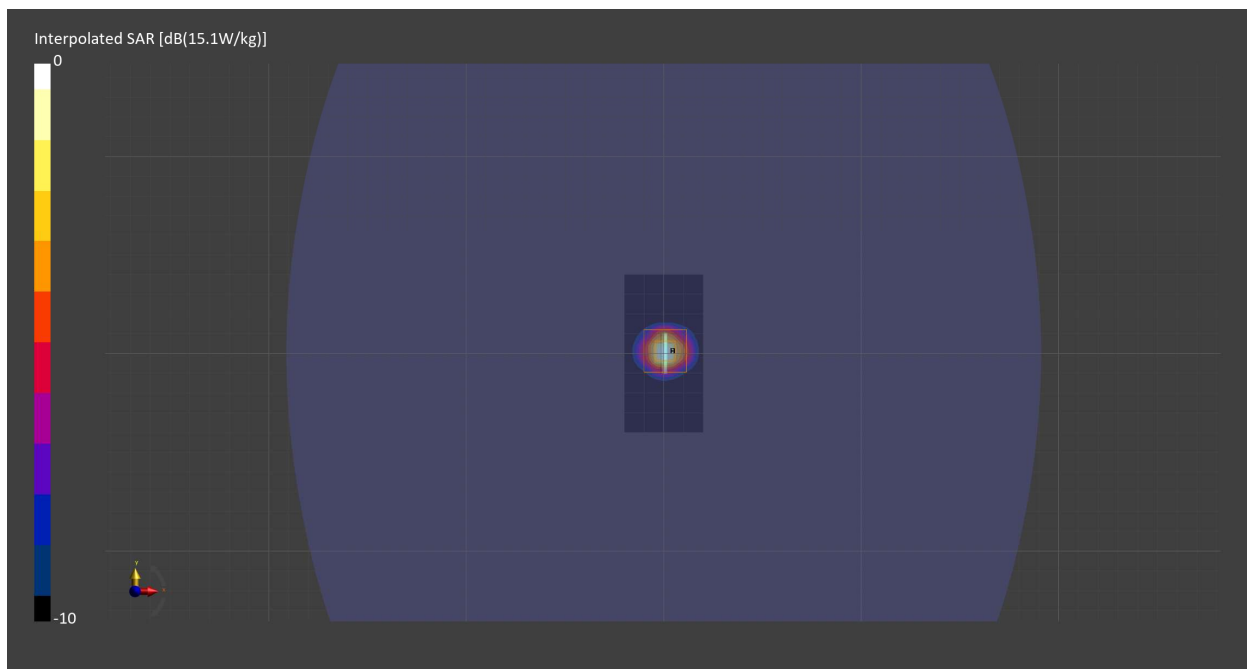
Probe Calibration Date	EX3DV4 - SN7711 2023-03-29	Phantom	ELI V8.0 (20deg probe tilt) - SN2160
DAE Calibration Date	DAE4 Sn1716 2023-03-16	TSL Meas. Date	HBBL-600-10000 2023-May-08

Scans Setup

	Area Scan	Zoom Scan
Grid Extents [mm]	40.0 x 80.0	22.0 x 22.0 x 22.0
Grid Steps [mm]	10.0 x 10.0	4.0 x 4.0 x 1.4
Sensor Surface [mm]	3.0	1.4
Graded Grid	n/a	Yes
M2/M1 [%]		63.1
Dist 3dB Peak [mm]		7.2

Measurement Results

	Area Scan	Zoom Scan
psSAR1g [W/Kg]	3.65	3.73
psSAR10g [W/Kg]	1.04	1.07
Power Drift [dB]	-0.09	-0.05



2023-05-08 System Performance Check Report D5GHzV2 - SN1213

Summary

Dipole	D5GHzV2 - SN1213		
Frequency [MHz]	5600.0		
Phantom Section TSL	Flat HSL	Dev. Peak [%]	1.0
Power [dBm]	17.0	Iso. Error [%]	1.4

Exposure Conditions

Dipole Distance [mm]	10	TSL Permittivity	34.1
Conversion Factor	5.15	TSL Conductivity [S/m]	4.90

Hardware Setup

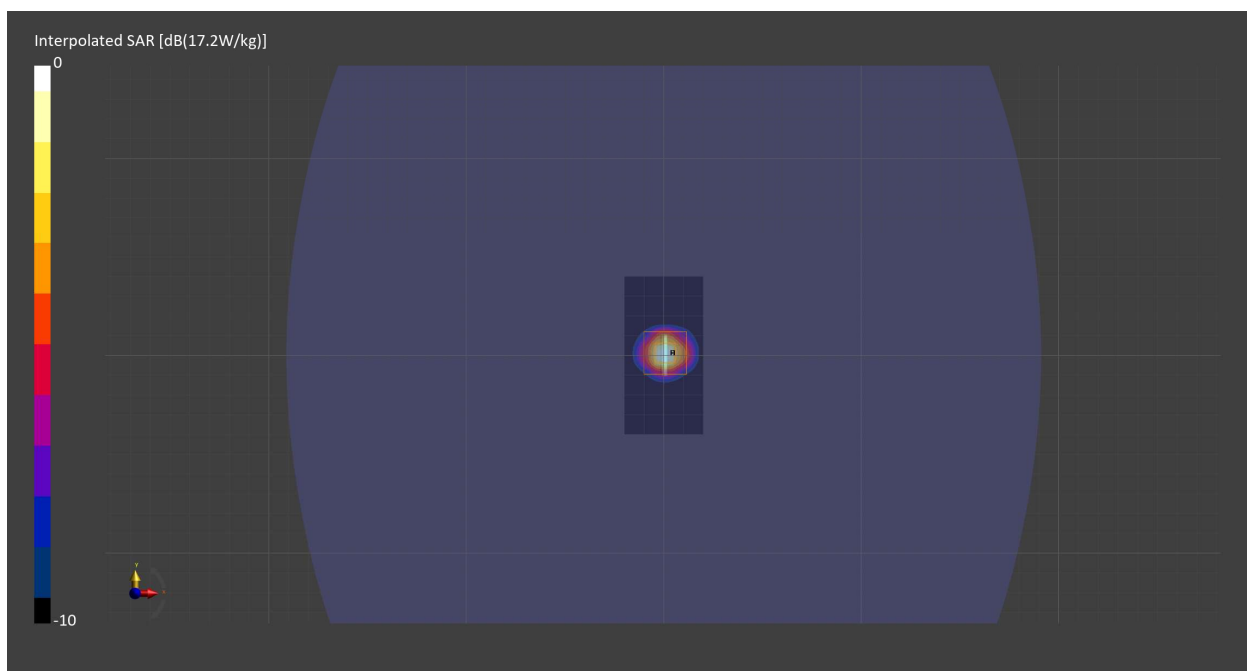
Probe Calibration Date	EX3DV4 - SN7711 2023-03-29	Phantom	ELI V8.0 (20deg probe tilt) - SN2160
DAE Calibration Date	DAE4 Sn1716 2023-03-16	TSL Meas. Date	HBBL-600-10000 2023-May-08

Scans Setup

	Area Scan	Zoom Scan
Grid Extents [mm]	40.0 x 80.0	22.0 x 22.0 x 22.0
Grid Steps [mm]	10.0 x 10.0	4.0 x 4.0 x 1.4
Sensor Surface [mm]	3.0	1.4
Graded Grid	n/a	Yes
M2/M1 [%]		61.7
Dist 3dB Peak [mm]		7.2

Measurement Results

	Area Scan	Zoom Scan
psSAR1g [W/Kg]	3.88	4.07
psSAR10g [W/Kg]	1.09	1.15
Power Drift [dB]	-0.04	-0.03



2023-05-12 System Performance Check Report D5GHzV2 - SN1213

Summary

Dipole	D5GHzV2 - SN1213		
Frequency [MHz]	5850.0		
Phantom Section TSL	Flat HSL	Dev. Peak [%]	-0.3
Power [dBm]	17.0	Iso. Error [%]	3.3

Exposure Conditions

Dipole Distance [mm]	10	TSL Permittivity	33.8
Conversion Factor	5.28	TSL Conductivity [S/m]	5.22

Hardware Setup

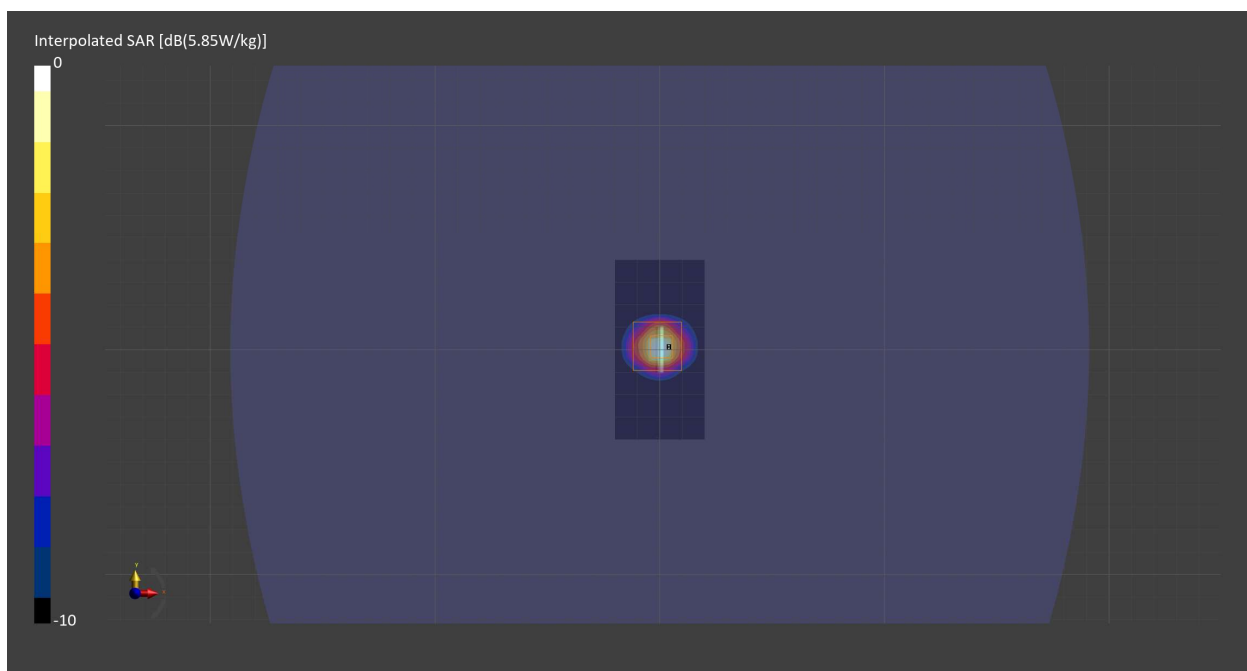
Probe Calibration Date	EX3DV4 - SN7711 2023-03-29	Phantom	ELI V8.0 (20deg probe tilt) - SN2160
DAE Calibration Date	DAE4 Sn1716 2023-03-16	TSL Meas. Date	HBBL-600-10000 2023-May-12

Scans Setup

	Area Scan	Zoom Scan
Grid Extents [mm]	40.0 x 80.0	22.0 x 22.0 x 22.0
Grid Steps [mm]	10.0 x 10.0	4.0 x 4.0 x 1.4
Sensor Surface [mm]	3.0	1.4
Graded Grid	n/a	Yes
M2/M1 [%]		59.2
Dist 3dB Peak [mm]		7.4

Measurement Results

	Area Scan	Zoom Scan
psSAR1g [W/Kg]	3.71	3.85
psSAR10g [W/Kg]	1.04	1.09
Power Drift [dB]	-0.12	-0.01



2023-05-16 System Performance Check Report D5GHzV2 - SN1213

Summary

Dipole	D5GHzV2 - SN1213		
Frequency [MHz]	5750.0		
Phantom Section TSL	Flat HSL	Dev. Peak [%]	-4.7
Power [dBm]	17.0	Iso. Error [%]	4.1

Exposure Conditions

Dipole Distance [mm]	10	TSL Permittivity	34.4
Conversion Factor	5.28	TSL Conductivity [S/m]	5.13

Hardware Setup

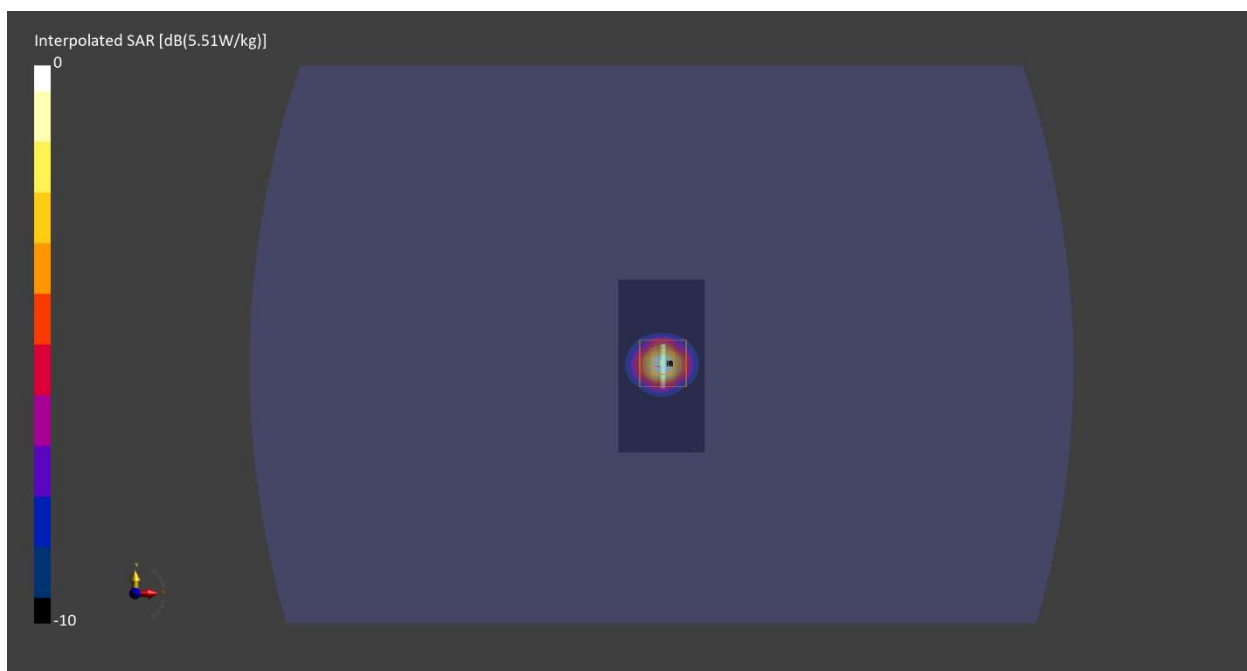
Probe Calibration Date	EX3DV4 - SN7711 2023-03-29	Phantom	ELI V8.0 (20deg probe tilt) - SN2160
DAE Calibration Date	DAE4 Sn1716 2023-03-16	TSL Meas. Date	HBBL-600-10000 2023-May-16

Scans Setup

	Area Scan	Zoom Scan
Grid Extents [mm]	40.0 x 80.0	22.0 x 22.0 x 22.0
Grid Steps [mm]	10.0 x 10.0	4.0 x 4.0 x 1.4
Sensor Surface [mm]	3.0	1.4
Graded Grid	n/a	Yes
M2/M1 [%]		60.0
Dist 3dB Peak [mm]		7.2

Measurement Results

	Area Scan	Zoom Scan
psSAR1g [W/Kg]	3.44	3.60
psSAR10g [W/Kg]	0.958	1.02
Power Drift [dB]	-0.03	-0.03



2023-05-05 System Performance Check Report D2450V2 - SN963

Summary

Dipole	D2450V2 - SN963		
Frequency [MHz]	2450.0		
Phantom Section TSL	Flat HSL	Dev. Peak [%]	2.8
Power [dBm]	17.0	Iso. Error [%]	2.3

Exposure Conditions

Dipole Distance [mm]	10	TSL Permittivity	39.5
Conversion Factor	8.6	TSL Conductivity [S/m]	1.86

Hardware Setup

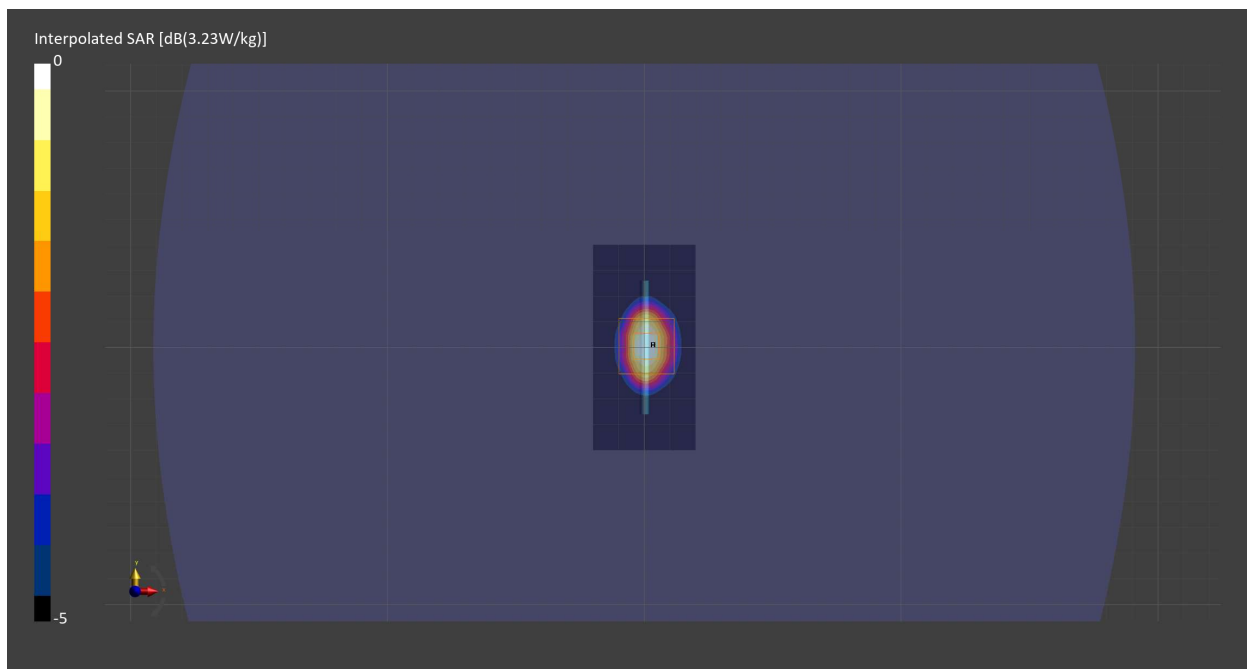
Probe Calibration Date	EX3DV4 - SN7709 2022-12-12	Phantom	ELI V5.0 (20deg probe tilt) - SN1196
DAE Calibration Date	DAE4 Sn1714 2022-11-23	TSL Meas. Date	HBBL-600-10000 2023-May-05

Scans Setup

	Area Scan	Zoom Scan
Grid Extents [mm]	40.0 x 80.0	30.0 x 30.0 x 30.0
Grid Steps [mm]	10.0 x 10.0	5.0 x 5.0 x 1.5
Sensor Surface [mm]	3.0	1.4
Graded Grid	n/a	Yes
M2/M1 [%]		78.2
Dist 3dB Peak [mm]		9.0

Measurement Results

	Area Scan	Zoom Scan
psSAR1g [W/Kg]	2.46	2.45
psSAR10g [W/Kg]	1.15	1.14
Power Drift [dB]	0.01	-0.00



2023-05-11 System Performance Check Report D6.5GHzV2 - SN1068

Summary

Dipole	D6.5GHzV2 - SN1068		
Frequency [MHz]	6500.0		
Phantom Section TSL	Flat HSL	Dev. Peak [%]	-2.4
Power [dBm]	17.0	Iso. Error [%]	3.6

Exposure Conditions

Dipole Distance [mm]	5	TSL Permittivity	33.6
Conversion Factor	5.4	TSL Conductivity [S/m]	6.11

Hardware Setup

Probe Calibration Date	EX3DV4 - SN7709 2022-12-12	Phantom	ELI V5.0 (20deg probe tilt) - SN1196
DAE Calibration Date	DAE4 Sn1714 2022-11-23	TSL Meas. Date	HBBL-600-10000 2023-May-11

Scans Setup

	Area Scan	Zoom Scan
Grid Extents [mm]	51.0 x 85.0	22.0 x 22.0 x 22.0
Grid Steps [mm]	8.5 x 8.5	3.4 x 3.4 x 1.4
Sensor Surface [mm]	3.0	1.4
Graded Grid	n/a	Yes
M2/M1 [%]		53.9
Dist 3dB Peak [mm]		4.6

Measurement Results

	Area Scan	Zoom Scan
psSAR1g [W/Kg]	13.4	15.5
psSAR10g [W/Kg]	2.61	2.87
Power Drift [dB]	0.01	0.02

