

Measurement Report for SM-X510, EDGE LEFT, WLAN 2.4GHz, IEEE 802.11b WIFI 2.4 GHz (DSSS, 1 Mbps, 99pc duty cycle), Channel 1 (2412.0 MHz)

Exposure Conditions

Phantom Section, TSL	Position, Test Distance [mm]	Band	Group, UID	Frequency [MHz], Channel Number	Conversion Factor	TSL Conductivity [S/m]	TSL Permittivity
Flat, HSL	EDGE LEFT, 0.00	WLAN 2.4GHz	WLAN, 10415-AAA	2412.0, 1	8.42	1.80	38.3

Hardware Setup

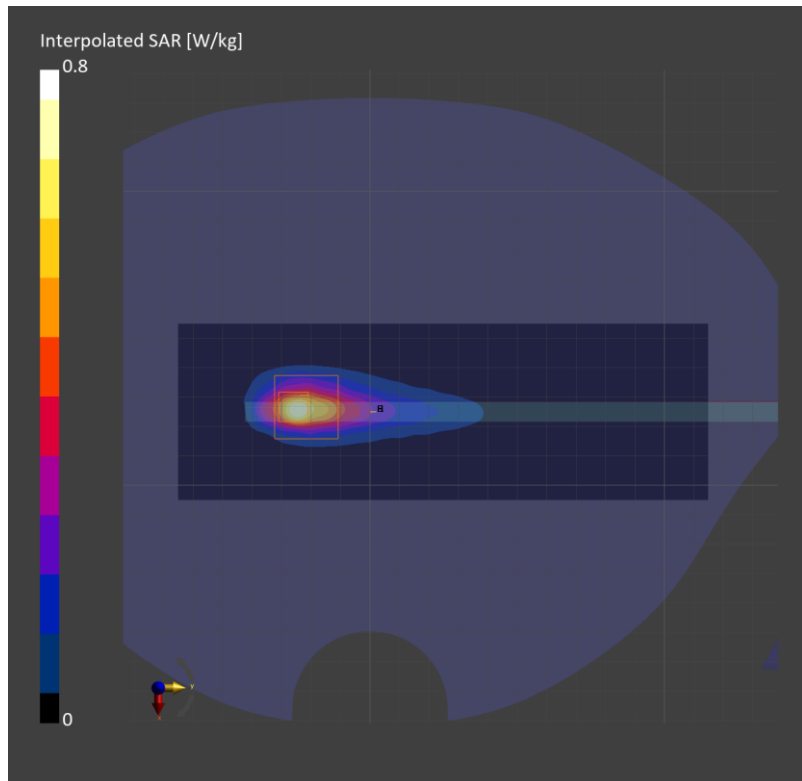
Phantom	TSL, Measured Date	Probe, Calibration Date	DAE, Calibration Date
Twin-SAM V8.0 (30deg probe tilt) - 2039	HBBL-600-10000, 2023-Jul-13	EX3DV4 - SN7646, 2023-03-23	DAE4 Sn1447, 2023-03-22

Scans Setup

	Area Scan	Zoom Scan
Grid Extents [mm]	60.0 x 180.0	30.0 x 30.0 x 30.0
Grid Steps [mm]	10.0 x 10.0	3.8 x 3.8 x 1.4
Sensor Surface [mm]	3.0	1.4

Measurement Results

	Area Scan	Zoom Scan
psSAR1g [W/Kg]	0.507	0.516
psSAR10g [W/Kg]	0.199	0.187
Power Drift [dB]		-0.07
M2/M1 [%]		65.9
Dist 3dB Peak [mm]		5.4



Measurement Report for SM-X510, BACK, WLAN 2.4GHz, IEEE 802.11b WIFI 2.4 GHz (DSSS, 1 Mbps, 99pc duty cycle), Channel 1 (2412.0 MHz)

Exposure Conditions

Phantom Section, TSL	Position, Test Distance [mm]	Band	Group, UID	Frequency [MHz], Channel Number	Conversion Factor	TSL Conductivity [S/m]	TSL Permittivity
Flat, HSL	BACK, 0.00	WLAN 2.4GHz	WLAN, 10415-AAA	2412.0, 1	8.42	1.80	38.3

Hardware Setup

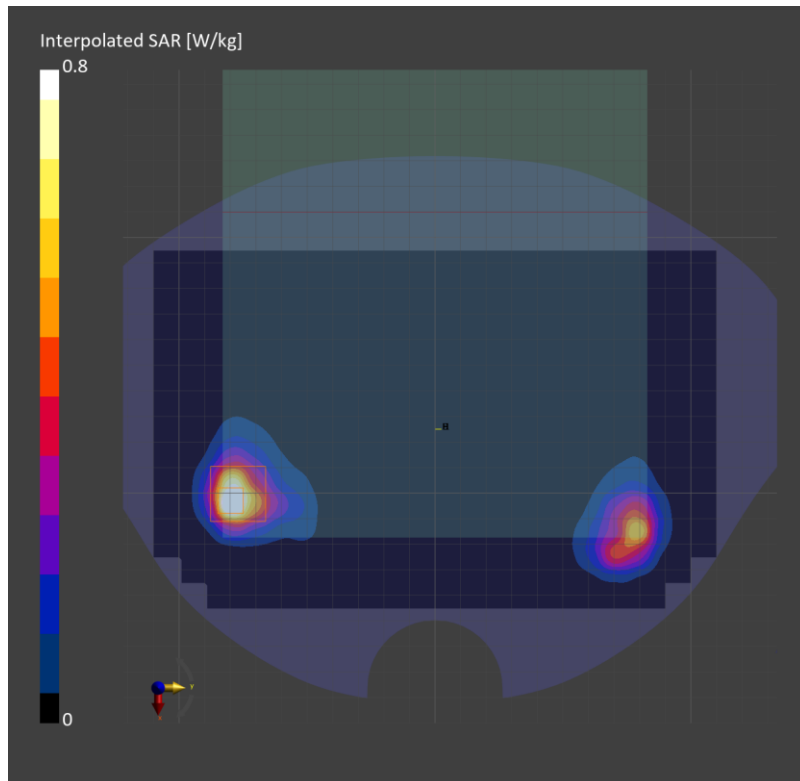
Phantom	TSL, Measured Date	Probe, Calibration Date	DAE, Calibration Date
Twin-SAM V8.0 (30deg probe tilt) - 2039	HBBL-600-10000, 2023-Jul-13	EX3DV4 - SN7646, 2023-03-23	DAE4 Sn1447, 2023-03-22

Scans Setup

	Area Scan	Zoom Scan
Grid Extents [mm]	220.0 x 140.0	30.0 x 30.0 x 30.0
Grid Steps [mm]	10.0 x 10.0	4.2 x 4.2 x 1.4
Sensor Surface [mm]	3.0	1.4

Measurement Results

	Area Scan	Zoom Scan
psSAR1g [W/Kg]	0.684	0.671
psSAR10g [W/Kg]	0.282	0.256
Power Drift [dB]		-0.05
M2/M1 [%]		69.5
Dist 3dB Peak [mm]		5.1



Measurement Report for SM-X510, EDGE RIGHT, WLAN 5GHz, IEEE 802.11ac WIFI (80MHz, MCS0, 90pc duty cycle), Channel 58 (5290.0 MHz)

Exposure Conditions

Phantom Section, TSL	Position, Test Distance [mm]	Band	Group, UID	Frequency [MHz], Channel Number	Conversion Factor	TSL Conductivity [S/m]	TSL Permittivity
Flat, HSL	EDGE RIGHT, 0.00	WLAN 5GHz	WLAN, 10626-AAC	5290.0, 58	5.4	4.55	35.8

Hardware Setup

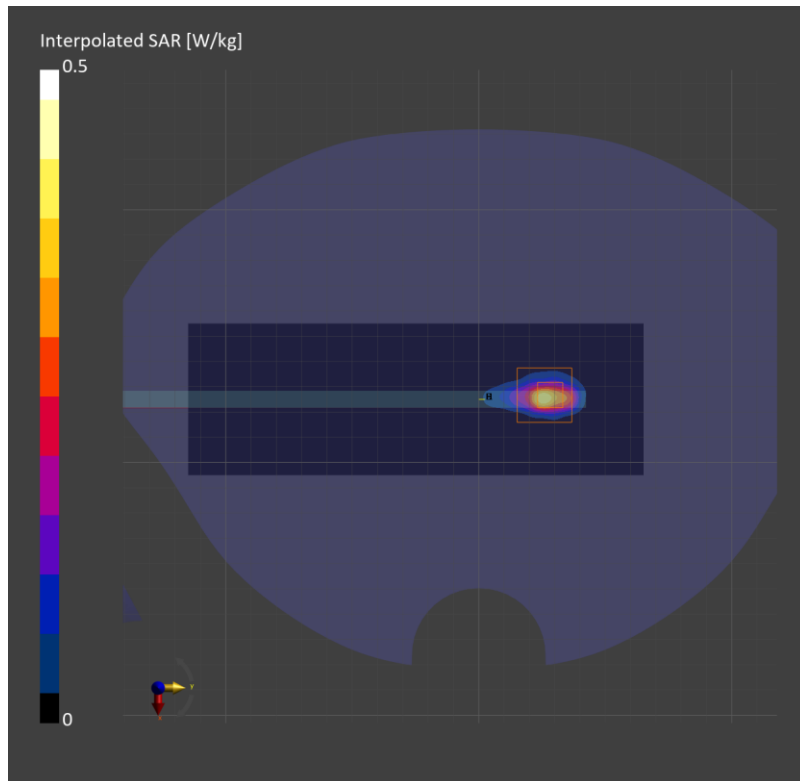
Phantom	TSL, Measured Date	Probe, Calibration Date	DAE, Calibration Date
Twin-SAM V8.0 (30deg probe tilt) - 2043	HBBL-600-10000, 2023-Jul-12	EX3DV4 - SN7314, 2023-05-26	DAE4 Sn1671, 2023-05-25

Scans Setup

	Area Scan	Zoom Scan
Grid Extents [mm]	60.0 x 180.0	22.0 x 22.0 x 22.0
Grid Steps [mm]	10.0 x 10.0	2.9 x 2.9 x 1.2
Sensor Surface [mm]	3.0	1.4

Measurement Results

	Area Scan	Zoom Scan
psSAR1g [W/Kg]	0.253	0.283
psSAR10g [W/Kg]	0.062	0.059
Power Drift [dB]		-0.07
M2/M1 [%]		63.9
Dist 3dB Peak [mm]		4.3



Measurement Report for SM-X510, EDGE RIGHT, WLAN 5GHz, IEEE 802.11ac WIFI (80MHz, MCS0, 90pc duty cycle), Channel 58 (5290.0 MHz)

Exposure Conditions

Phantom Section, TSL	Position, Test Distance [mm]	Band	Group, UID	Frequency [MHz], Channel Number	Conversion Factor	TSL Conductivity [S/m]	TSL Permittivity
Flat, HSL	EDGE RIGHT, 0.00	WLAN 5GHz	WLAN, 10626-AAC	5290.0, 58	5.4	4.55	35.8

Hardware Setup

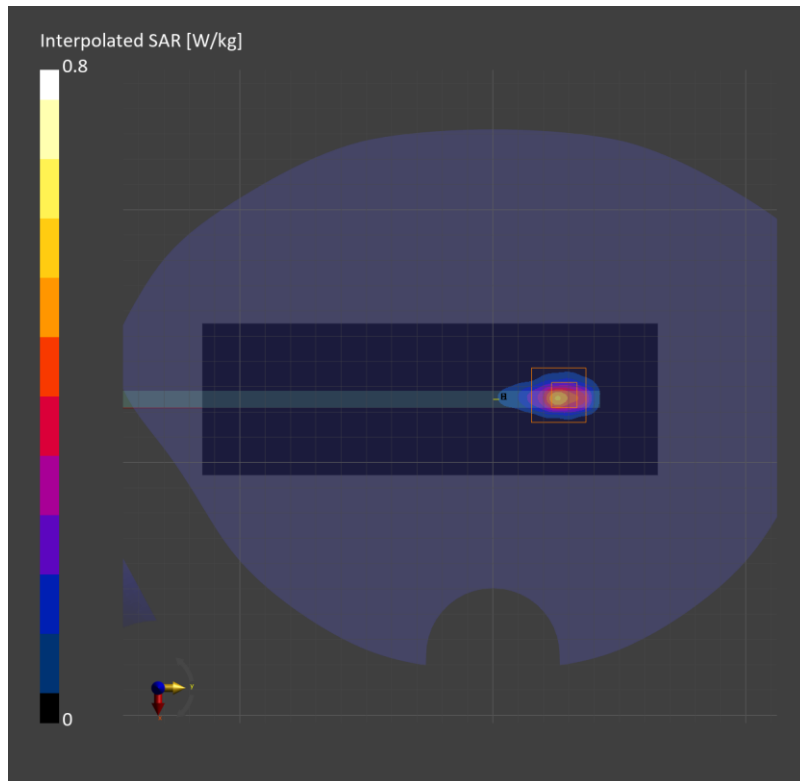
Phantom	TSL, Measured Date	Probe, Calibration Date	DAE, Calibration Date
Twin-SAM V8.0 (30deg probe tilt) - 2043	HBBL-600-10000, 2023-Jul-12	EX3DV4 - SN7314, 2023-05-26	DAE4 Sn1671, 2023-05-25

Scans Setup

	Area Scan	Zoom Scan
Grid Extents [mm]	60.0 x 180.0	22.0 x 22.0 x 22.0
Grid Steps [mm]	10.0 x 10.0	2.9 x 2.9 x 1.2
Sensor Surface [mm]	3.0	1.4

Measurement Results

	Area Scan	Zoom Scan
psSAR1g [W/Kg]	0.329	0.364
psSAR10g [W/Kg]	0.083	0.079
Power Drift [dB]	0.04	
M2/M1 [%]	64.3	
Dist 3dB Peak [mm]	4.3	



Measurement Report for SM-X510, BACK, U-NII-2C Standalone, IEEE 802.11a/h WiFi 5 GHz (OFDM, 6 Mbps, 90pc duty cycle), Channel 140 (5700.0 MHz)

Exposure Conditions

Phantom Section, TSL	Position, Test Distance [mm]	Band	Group, UID	Frequency [MHz], Channel Number	Conversion Factor	TSL Conductivity [S/m]	TSL Permittivity
Flat, HSL	BACK, 0.00	U-NII-2C Standalone	WLAN, 10583-AAC	5700.0, 140	5.25	5.18	35.4

Hardware Setup

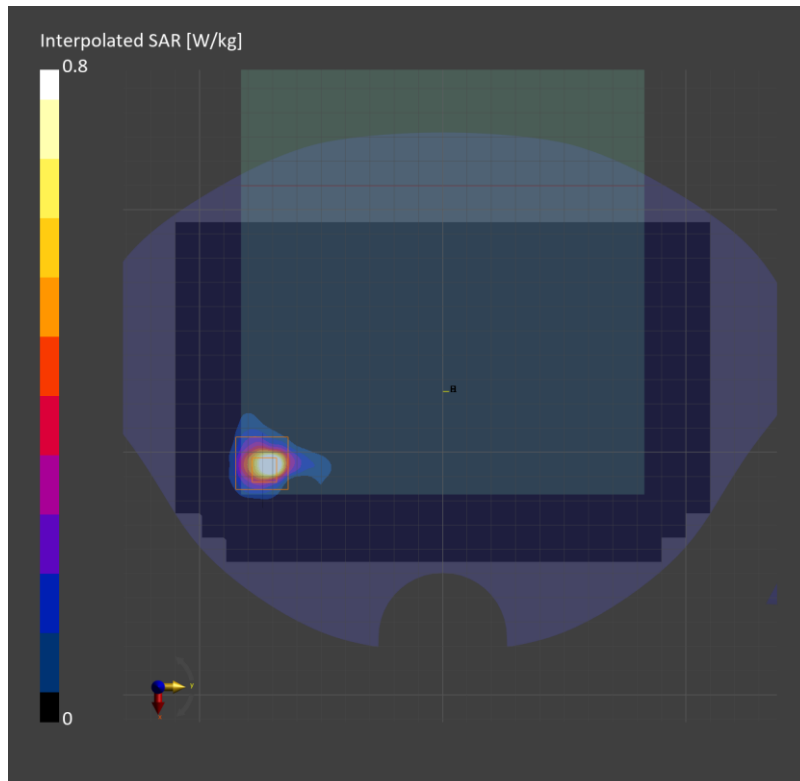
Phantom	TSL, Measured Date	Probe, Calibration Date	DAE, Calibration Date
Twin-SAM V8.0 (30deg probe tilt) - 2039	HBBL-600-10000, 2023-Jul-17	EX3DV4 - SN7646, 2023-03-23	DAE4 Sn911, 2023-03-21

Scans Setup

	Area Scan	Zoom Scan
Grid Extents [mm]	220.0 x 140.0	22.0 x 22.0 x 22.0
Grid Steps [mm]	10.0 x 10.0	2.2 x 2.2 x 1.2
Sensor Surface [mm]	3.0	1.4

Measurement Results

	Area Scan	Zoom Scan
psSAR1g [W/Kg]	0.631	0.846
psSAR10g [W/Kg]	0.158	0.174
Power Drift [dB]		-0.19
M2/M1 [%]		60.4
Dist 3dB Peak [mm]		3.7



Measurement Report for SM-X510, EDGE RIGHT, WLAN 5GHz, IEEE 802.11a/h WiFi 5 GHz (OFDM, 6 Mbps, 90pc duty cycle), Channel 140 (5700.0 MHz)

Exposure Conditions

Phantom Section, TSL	Position, Test Distance [mm]	Band	Group, UID	Frequency [MHz], Channel Number	Conversion Factor	TSL Conductivity [S/m]	TSL Permittivity
Flat, HSL	EDGE RIGHT, 0.00	WLAN 5GHz	WLAN, 10583-AAC	5700.0, 140	4.93	5.17	35.7

Hardware Setup

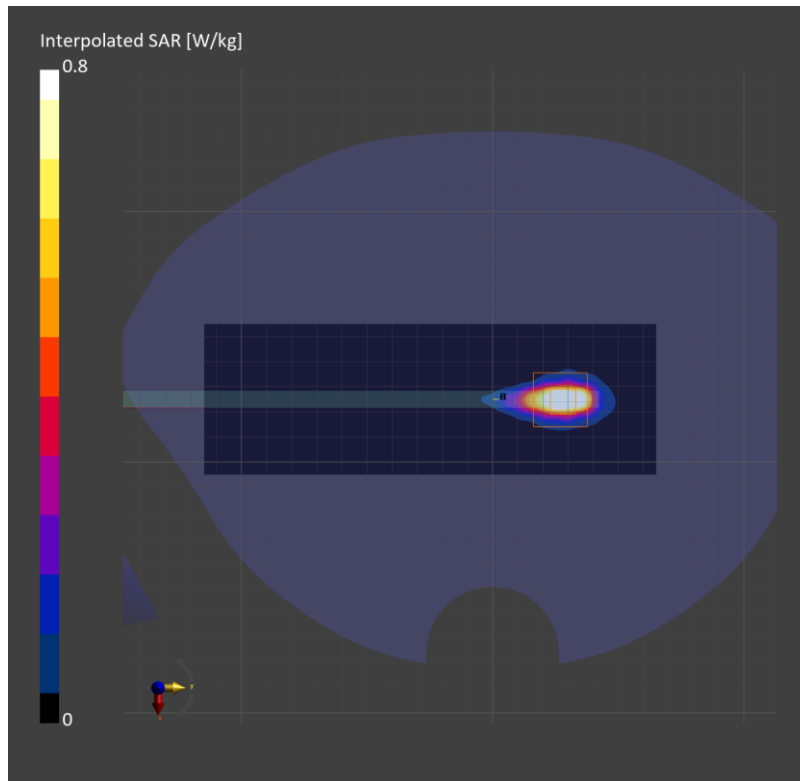
Phantom	TSL, Measured Date	Probe, Calibration Date	DAE, Calibration Date
Twin-SAM V8.0 (30deg probe tilt) - 2043	HBBL-600-10000, 2023-Jul-18	EX3DV4 - SN7330, 2023-01-24	DAE4 Sn1671, 2023-05-25

Scans Setup

	Area Scan	Zoom Scan
Grid Extents [mm]	60.0 x 180.0	22.0 x 22.0 x 22.0
Grid Steps [mm]	10.0 x 10.0	2.9 x 2.9 x 1.2
Sensor Surface [mm]	3.0	1.4

Measurement Results

	Area Scan	Zoom Scan
psSAR1g [W/Kg]	0.656	0.767
psSAR10g [W/Kg]	0.172	0.176
Power Drift [dB]		-0.10
M2/M1 [%]		61.4
Dist 3dB Peak [mm]		4.5



Measurement Report for SM-X510, BACK, WLAN 5GHz, IEEE 802.11a/h WIFI 5 GHz (OFDM, 6 Mbps, 90pc duty cycle), Channel 157 (5785.0 MHz)

Exposure Conditions

Phantom Section, TSL	Position, Test Distance [mm]	Band	Group, UID	Frequency [MHz], Channel Number	Conversion Factor	TSL Conductivity [S/m]	TSL Permittivity
Flat, HSL	BACK, 0.00	WLAN 5GHz	WLAN, 10583-AAC	5785.0, 157	4.58	5.30	35.7

Hardware Setup

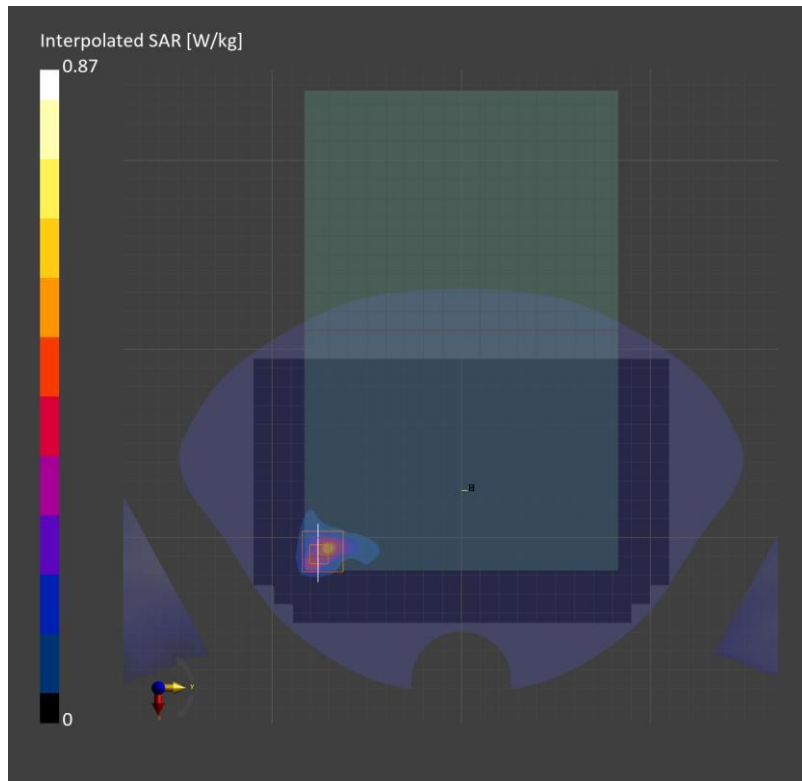
Phantom	TSL, Measured Date	Probe, Calibration Date	DAE, Calibration Date
Twin-SAM V8.0 (30deg probe tilt) - 2037	HBBL-600-10000, 2023-Jul-17	EX3DV4 - SN7313, 2023-03-24	DAE4 Sn1670, 2023-05-24

Scans Setup

	Area Scan	Zoom Scan
Grid Extents [mm]	220.0 x 140.0	22.0 x 22.0 x 22.0
Grid Steps [mm]	10.0 x 10.0	2.8 x 2.8 x 1.2
Sensor Surface [mm]	3.0	1.4

Measurement Results

	Area Scan	Zoom Scan
psSAR1g [W/Kg]	0.357	0.712
psSAR10g [W/Kg]	0.110	0.144
Power Drift [dB]	0.18	
M2/M1 [%]	62.3	
Dist 3dB Peak [mm]	3.6	



Measurement Report for SM-X510, EDGE LEFT, WLAN 5GHz, IEEE 802.11a/h WiFi 5 GHz (OFDM, 6 Mbps, 90pc duty cycle), Channel 157 (5785.0 MHz)

Exposure Conditions

Phantom Section, TSL	Position, Test Distance [mm]	Band	Group, UID	Frequency [MHz], Channel Number	Conversion Factor	TSL Conductivity [S/m]	TSL Permittivity
Flat, HSL	EDGE LEFT, 0.00	WLAN 5GHz	WLAN, 10583-AAC	5785.0, 157	4.58	5.30	35.7

Hardware Setup

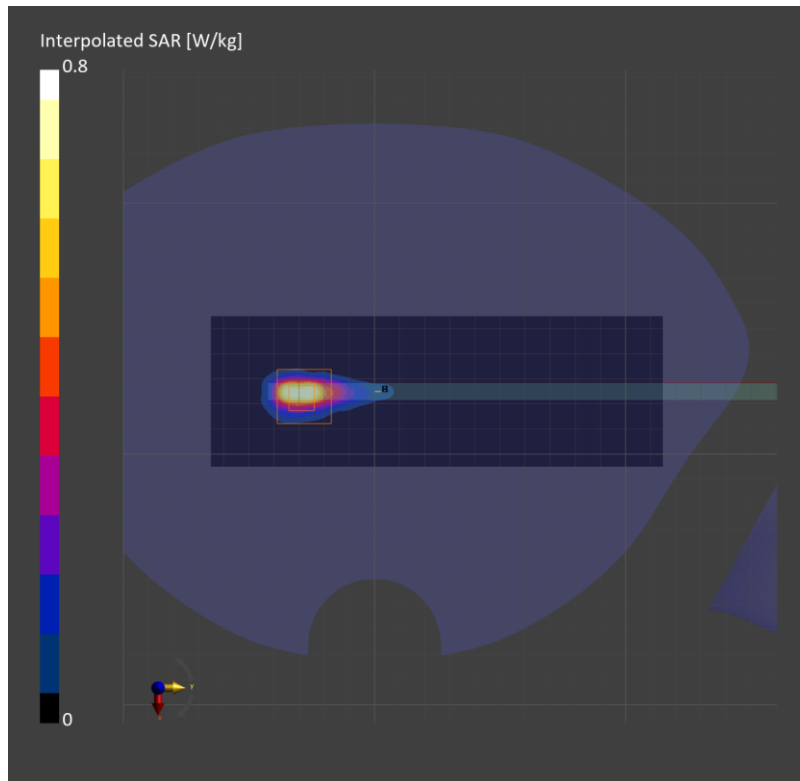
Phantom	TSL, Measured Date	Probe, Calibration Date	DAE, Calibration Date
Twin-SAM V8.0 (30deg probe tilt) - 2037	HBBL-600-10000, 2023-Jul-17	EX3DV4 - SN7313, 2023-03-24	DAE4 Sn1670, 2023-05-24

Scans Setup

	Area Scan	Zoom Scan
Grid Extents [mm]	60.0 x 180.0	22.0 x 22.0 x 22.0
Grid Steps [mm]	10.0 x 10.0	3.8 x 3.8 x 1.4
Sensor Surface [mm]	3.0	1.4

Measurement Results

	Area Scan	Zoom Scan
psSAR1g [W/Kg]	0.499	0.659
psSAR10g [W/Kg]	0.131	0.140
Power Drift [dB]	0.05	
M2/M1 [%]	54.3	
Dist 3dB Peak [mm]	3.9	





Measurement Report for SM-X510, EDGE LEFT, ISM 2.4 GHz Band, IEEE 802.15.1 Bluetooth (8-DPSK, DH5), Channel 0 (2402.0 MHz)

Exposure Conditions

Phantom Section, TSL	Position, Test Distance [mm]	Band	Group, UID	Frequency [MHz], Channel Number	Conversion Factor	TSL Conductivity [S/m]	TSL Permittivity
Flat, HSL	EDGE LEFT, 0.00	ISM 2.4 GHz Band	Bluetooth, 10038-CAA	2402.0, 0	8.04	1.76	39.5

Hardware Setup

Phantom	TSL, Measured Date	Probe, Calibration Date	DAE, Calibration Date
Twin-SAM V8.0 (30deg probe tilt) - 2043	HBBL-600-10000, 2023-Jul-19	EX3DV4 - SN7330, 2023-01-24	DAE4 Sn1671, 2023-05-25

Scans Setup

	Area Scan	Zoom Scan
Grid Extents [mm]	60.0 x 180.0	30.0 x 30.0 x 30.0
Grid Steps [mm]	10.0 x 10.0	3.4 x 3.4 x 1.4
Sensor Surface [mm]	3.0	1.4

Measurement Results

	Area Scan	Zoom Scan
psSAR1g [W/Kg]	0.434	0.516
psSAR10g [W/Kg]	0.176	0.155
Power Drift [dB]		-0.02
M2/M1 [%]		58.7
Dist 3dB Peak [mm]		4.6

