

WCDMA Band 5

Frequency: 846.6 MHz; Duty Cycle: 1:1; Room Ambient Temperature: 24.0°C; Liquid Temperature: 23.0°C
 Medium parameters used (interpolated): $f = 846.6$ MHz; $\sigma = 1.025$ S/m; $\epsilon_r = 55.618$; $\rho = 1000$ kg/m³

DASY5 Configuration:

- Area Scan Setting: Find Secondary Maximum Within: 2.0 dB and with a peak SAR value greater than 0.0012W/kg
- Electronics: DAE4 Sn1468; Calibrated: 2015-09-15
- Probe: EX3DV4 - SN7376; ConvF(10.07, 10.07, 10.07); Calibrated: 2015-09-02;
- Sensor-Surface: 2mm (Mechanical Surface Detection)
- Phantom: ELI v6.0; Type: QDOVA003AA; Serial: TP:xxxx

Rear/Rel.99_ch 4233/Area Scan (7x12x1): Measurement grid: dx=15mm, dy=15mm

Maximum value of SAR (measured) = 0.701 W/kg

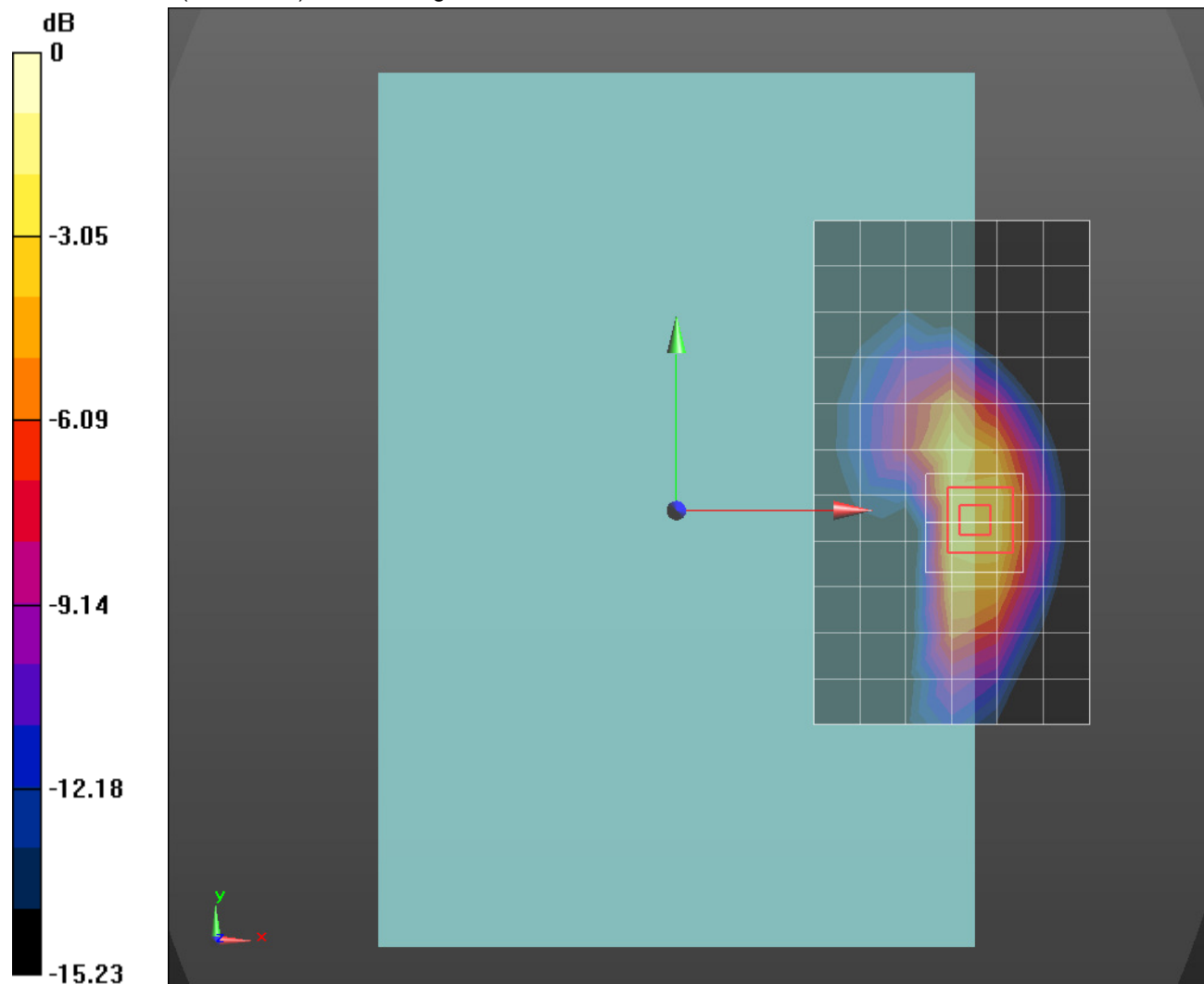
Rear/Rel.99_ch 4233/Zoom Scan (5x5x7)/Cube 0: Measurement grid: dx=8mm, dy=8mm, dz=5mm

Reference Value = 25.47 V/m; Power Drift = -0.07 dB

Peak SAR (extrapolated) = 1.37 W/kg

SAR(1 g) = 0.752 W/kg; SAR(10 g) = 0.411 W/kg

Maximum value of SAR (measured) = 1.08 W/kg



0 dB = 1.08 W/kg = 0.33 dBW/kg

WCDMA Band 2

Frequency: 1880 MHz; Duty Cycle: 1:1; Room Ambient Temperature: 24.0°C; Liquid Temperature: 23.0°C
 Medium parameters used: $f = 1880 \text{ MHz}$; $\sigma = 1.555 \text{ S/m}$; $\epsilon_r = 51.273$; $\rho = 1000 \text{ kg/m}^3$

DASY5 Configuration:

- Area Scan Setting: Find Secondary Maximum Within: 2.0 dB and with a peak SAR value greater than 0.0012W/kg
- Electronics: DAE4 Sn1494; Calibrated: 2015-11-11
- Probe: EX3DV4 - SN7330; ConvF(7.82, 7.82, 7.82); Calibrated: 2015-02-12;
- Sensor-Surface: 2mm (Mechanical Surface Detection)
- Phantom: ELI v6.0; Type: QDOVA003AA; Serial: TP:xxxx

Rear/Rel.99_ch 9400 2/Area Scan (9x14x1): Measurement grid: dx=15mm, dy=15mm

Maximum value of SAR (measured) = 0.781 W/kg

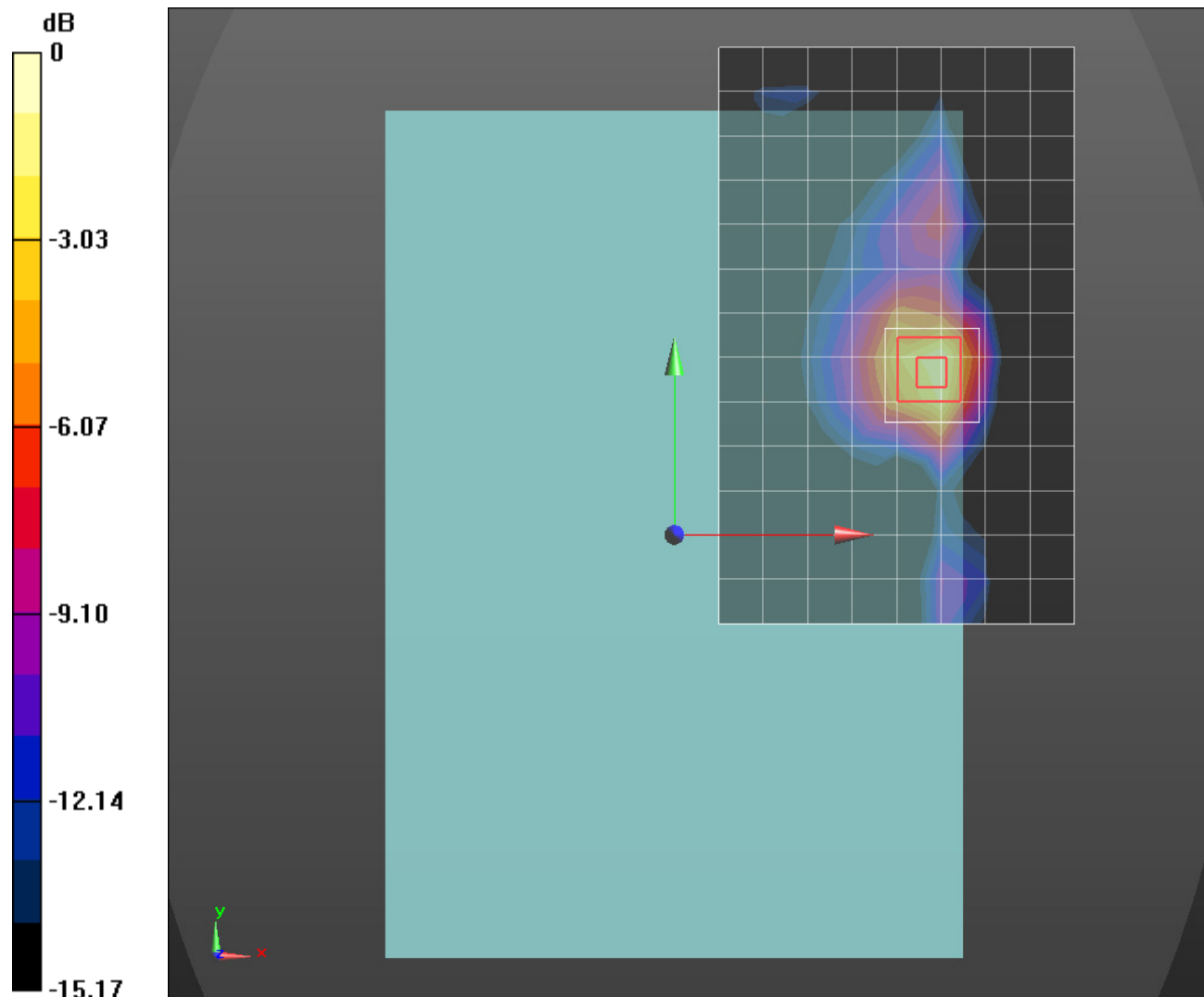
Rear/Rel.99_ch 9400 2/Zoom Scan (5x5x7)/Cube 0: Measurement grid: dx=8mm, dy=8mm, dz=5mm

Reference Value = 21.86 V/m; Power Drift = -0.07 dB

Peak SAR (extrapolated) = 1.24 W/kg

SAR(1 g) = 0.637 W/kg; SAR(10 g) = 0.307 W/kg

Maximum value of SAR (measured) = 0.953 W/kg



0 dB = 0.953 W/kg = -0.21 dBW/kg

LTE Band 5

Frequency: 844 MHz; Duty Cycle: 1:1; Room Ambient Temperature: 24.0°C; Liquid Temperature: 23.0°C
 Medium parameters used (interpolated): $f = 844 \text{ MHz}$; $\sigma = 1.022 \text{ S/m}$; $\epsilon_r = 55.633$; $\rho = 1000 \text{ kg/m}^3$

DASY5 Configuration:

- Area Scan Setting: Find Secondary Maximum Within: 2.0 dB and with a peak SAR value greater than 0.0012W/kg
- Electronics: DAE4 Sn1468; Calibrated: 2015-09-15
- Probe: EX3DV4 - SN7376; ConvF(10.07, 10.07, 10.07); Calibrated: 2015-09-02;
- Sensor-Surface: 2mm (Mechanical Surface Detection)
- Phantom: ELI v6.0; Type: QDOVA003AA; Serial: TP:xxxx

Rear/QPSK RB 1/0 ch20600/Area Scan (7x11x1): Measurement grid: dx=15mm, dy=15mm

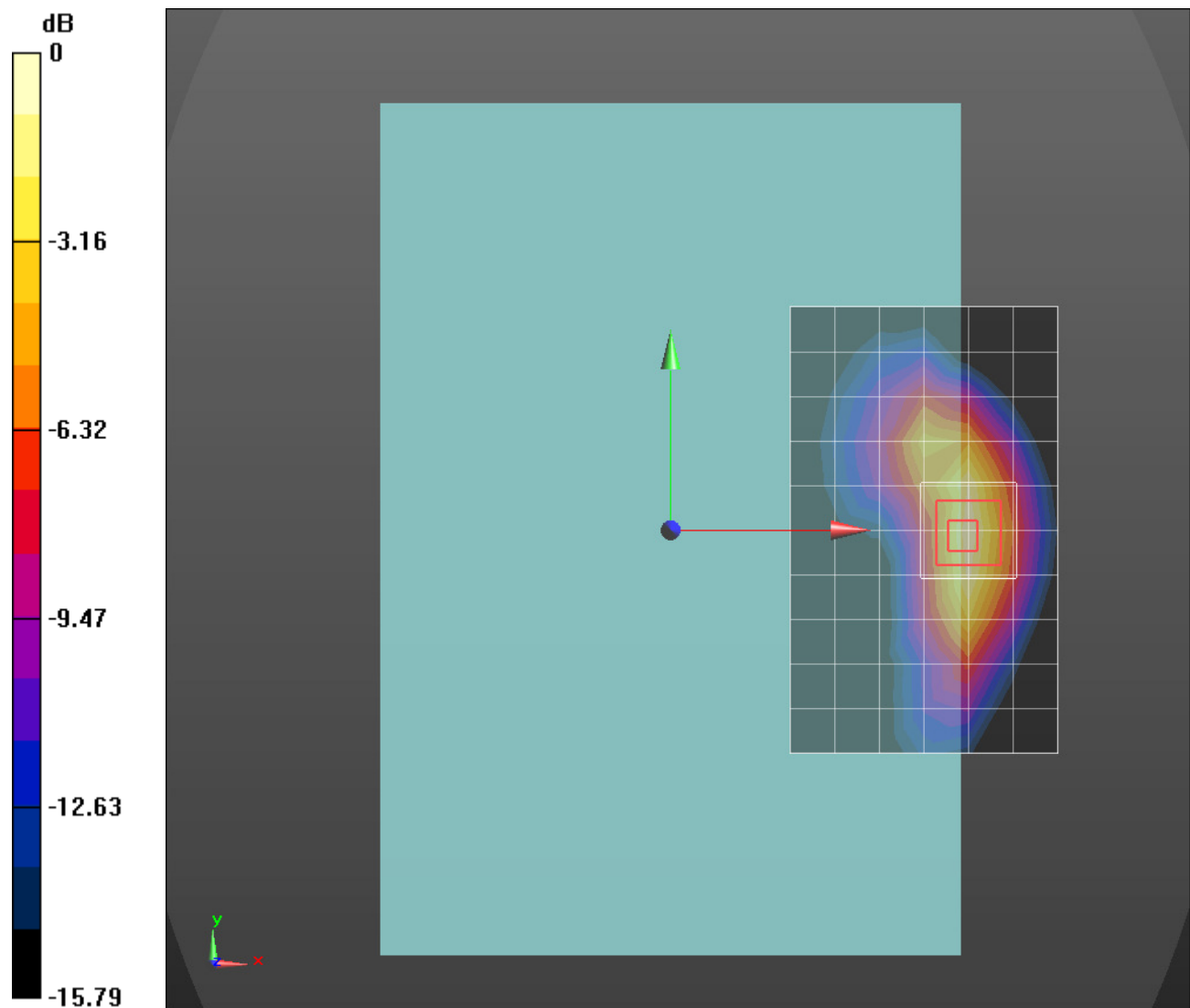
Maximum value of SAR (measured) = 1.20 W/kg

Rear/QPSK RB 1/0 ch20600/Zoom Scan (5x5x7)/Cube 0: Measurement grid: dx=8mm, dy=8mm, dz=5mm

Reference Value = 33.92 V/m; Power Drift = 0.00 dB

Peak SAR (extrapolated) = 1.65 W/kg

SAR(1 g) = 0.893 W/kg; SAR(10 g) = 0.485 W/kg



0 dB = 1.20 W/kg = 0.79 dBW/kg

Wi-Fi_2.4GHzGhz

Frequency: 2462 MHz; Duty Cycle: 1:1; Room Ambient Temperature: 24.0°C; Liquid Temperature: 23.0°C
 Medium parameters used (interpolated): $f = 2462 \text{ MHz}$; $\sigma = 2.042 \text{ S/m}$; $\epsilon_r = 50.708$; $\rho = 1000 \text{ kg/m}^3$

DASY5 Configuration:

- Area Scan Setting: Find Secondary Maximum Within: 2.0 dB and with a peak SAR value greater than 0.0012W/kg
- Electronics: DAE4 Sn1468; Calibrated: 2015-09-15
- Probe: EX3DV4 - SN7376; ConvF(7.37, 7.37, 7.37); Calibrated: 2015-09-02;
- Sensor-Surface: 2mm (Mechanical Surface Detection)
- Phantom: ELI v6.0; Type: QDOVA003AA; Serial: TP:2005

Rear/802.11b_ch 11 SISO Chan 1/Area Scan (7x10x1): Measurement grid: $dx=12\text{mm}$, $dy=12\text{mm}$
 Maximum value of SAR (measured) = 1.43 W/kg

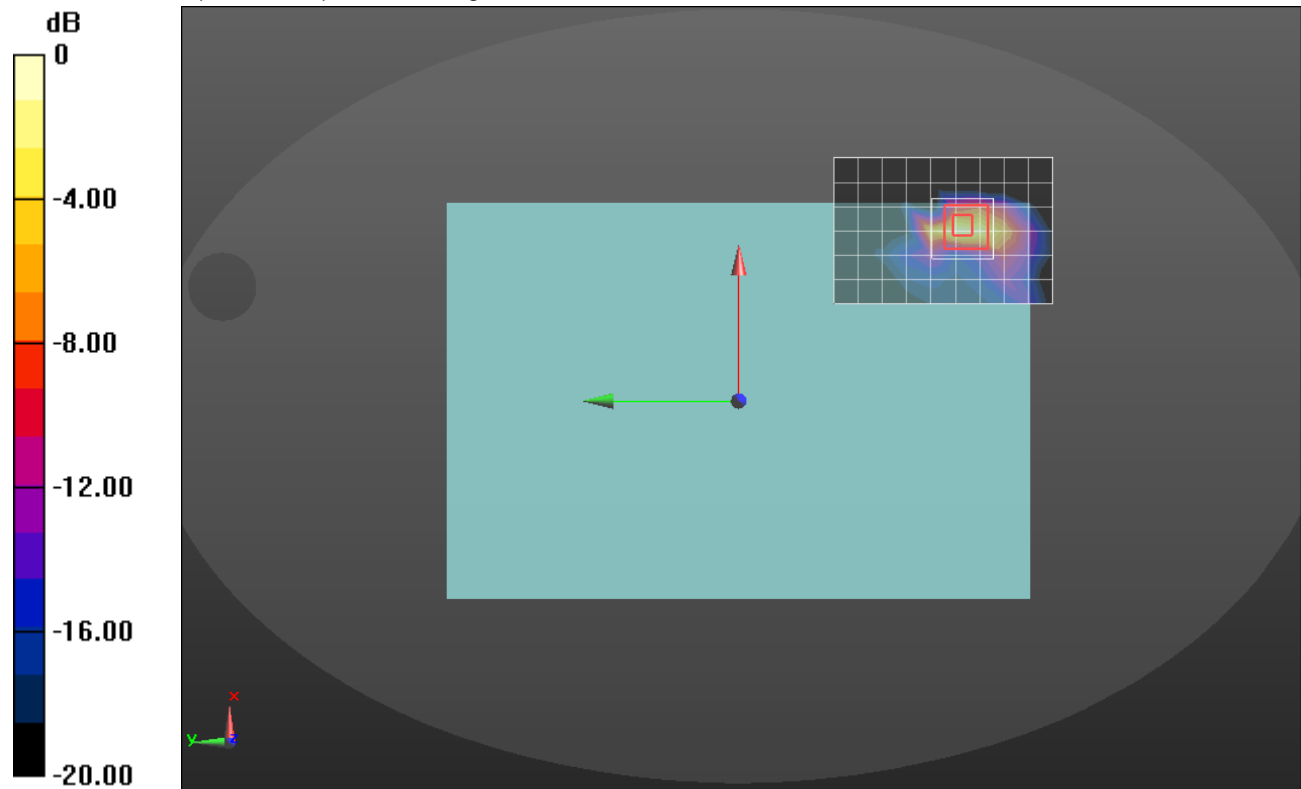
Rear/802.11b_ch 11 SISO Chan 1/Zoom Scan (7x7x7)/Cube 0: Measurement grid: $dx=5\text{mm}$,
 $dy=5\text{mm}$, $dz=5\text{mm}$

Reference Value = 25.44 V/m; Power Drift = -0.06 dB

Peak SAR (extrapolated) = 2.77 W/kg

SAR(1 g) = 0.988 W/kg; SAR(10 g) = 0.340 W/kg

Maximum value of SAR (measured) = 1.66 W/kg



0 dB = 1.66 W/kg = 2.20 dBW/kg

Wi-Fi_5.3Ghz_PWR Reduction

Frequency: 5290 MHz; Duty Cycle: 1:1; Room Ambient Temperature: 24.0°C; Liquid Temperature: 23.0°C
 Medium parameters used: $f = 5290 \text{ MHz}$; $\sigma = 5.458 \text{ S/m}$; $\epsilon_r = 48.69$; $\rho = 1000 \text{ kg/m}^3$

DASY5 Configuration:

- Area Scan Setting: Find Secondary Maximum Within: 2.0 dB and with a peak SAR value greater than 0.0012W/kg
- Electronics: DAE4 Sn1447; Calibrated: 2015-09-23
- Probe: EX3DV4 - SN7314; ConvF(4.26, 4.26, 4.26); Calibrated: 2015-09-25;
- Sensor-Surface: 2mm (Mechanical Surface Detection)
- Phantom: ELI v6.0; Type: QDOVA003AA; Serial: TP:2013

Rear/802.11ac_ch 58 SISO Chan 0/Area Scan (15x11x1): Measurement grid: dx=10mm, dy=10mm
 Maximum value of SAR (measured) = 0.415 W/kg

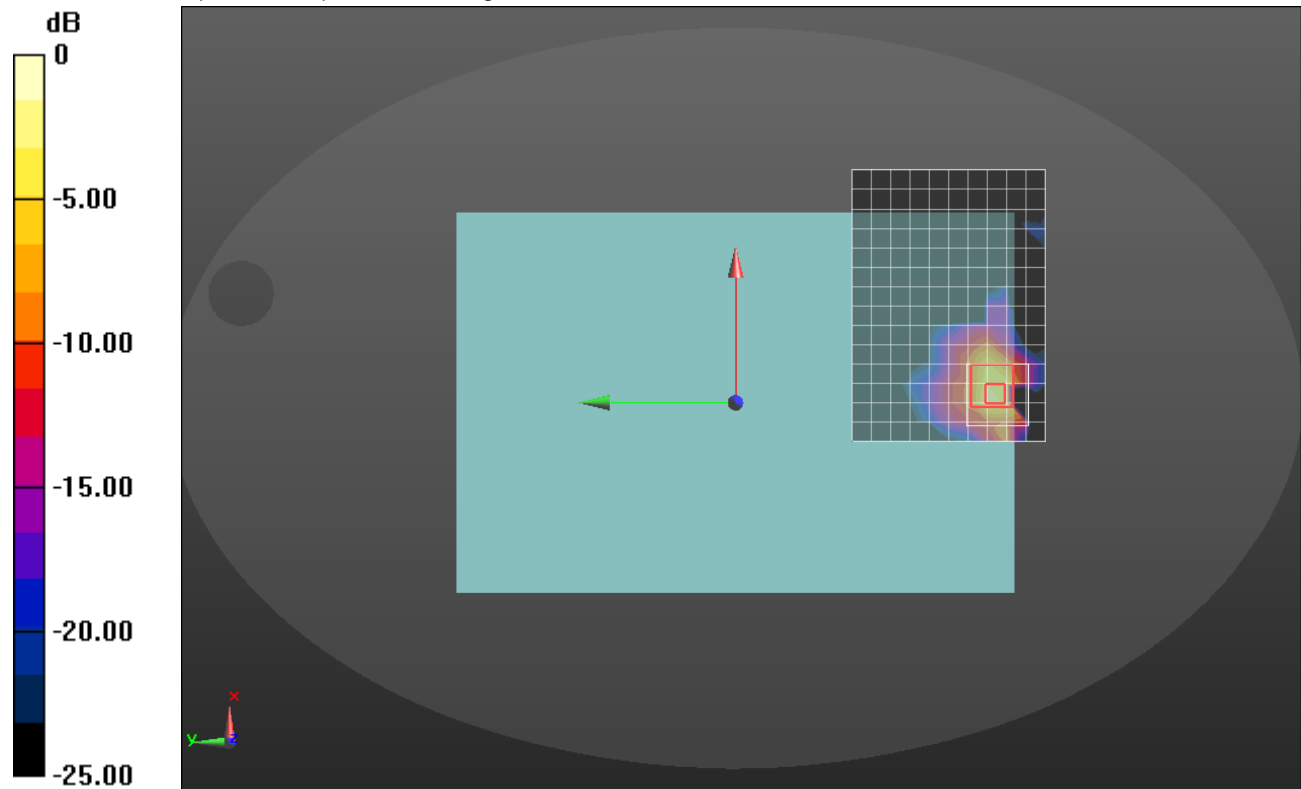
Rear/802.11ac_ch 58 SISO Chan 0/Zoom Scan (9x9x12)/Cube 0: Measurement grid: dx=4mm, dy=4mm, dz=2mm

Reference Value = 8.470 V/m; Power Drift = 0.15 dB

Peak SAR (extrapolated) = 1.25 W/kg

SAR(1 g) = 0.283 W/kg; SAR(10 g) = 0.067 W/kg

Maximum value of SAR (measured) = 0.697 W/kg



0 dB = 0.697 W/kg = -1.57 dBW/kg

Wi-Fi_5.5Ghz_PWR Reduction

Frequency: 5610 MHz; Duty Cycle: 1:1; Room Ambient Temperature: 24.0°C; Liquid Temperature: 23.0°C
 Medium parameters used: $f = 5610 \text{ MHz}$; $\sigma = 5.878 \text{ S/m}$; $\epsilon_r = 48.135$; $\rho = 1000 \text{ kg/m}^3$

DASY5 Configuration:

- Area Scan Setting: Find Secondary Maximum Within: 2.0 dB and with a peak SAR value greater than 0.0012W/kg
- Electronics: DAE4 Sn1447; Calibrated: 2015-09-23
- Probe: EX3DV4 - SN7314; ConvF(3.6, 3.6, 3.6); Calibrated: 2015-09-25;
- Sensor-Surface: 2mm (Mechanical Surface Detection)
- Phantom: ELI v6.0; Type: QDOVA003AA; Serial: TP:2013

Rear/802.11ac_ch 122 SISO Chan 0/Area Scan (14x7x1): Measurement grid: dx=10mm, dy=10mm
 Maximum value of SAR (measured) = 0.928 W/kg

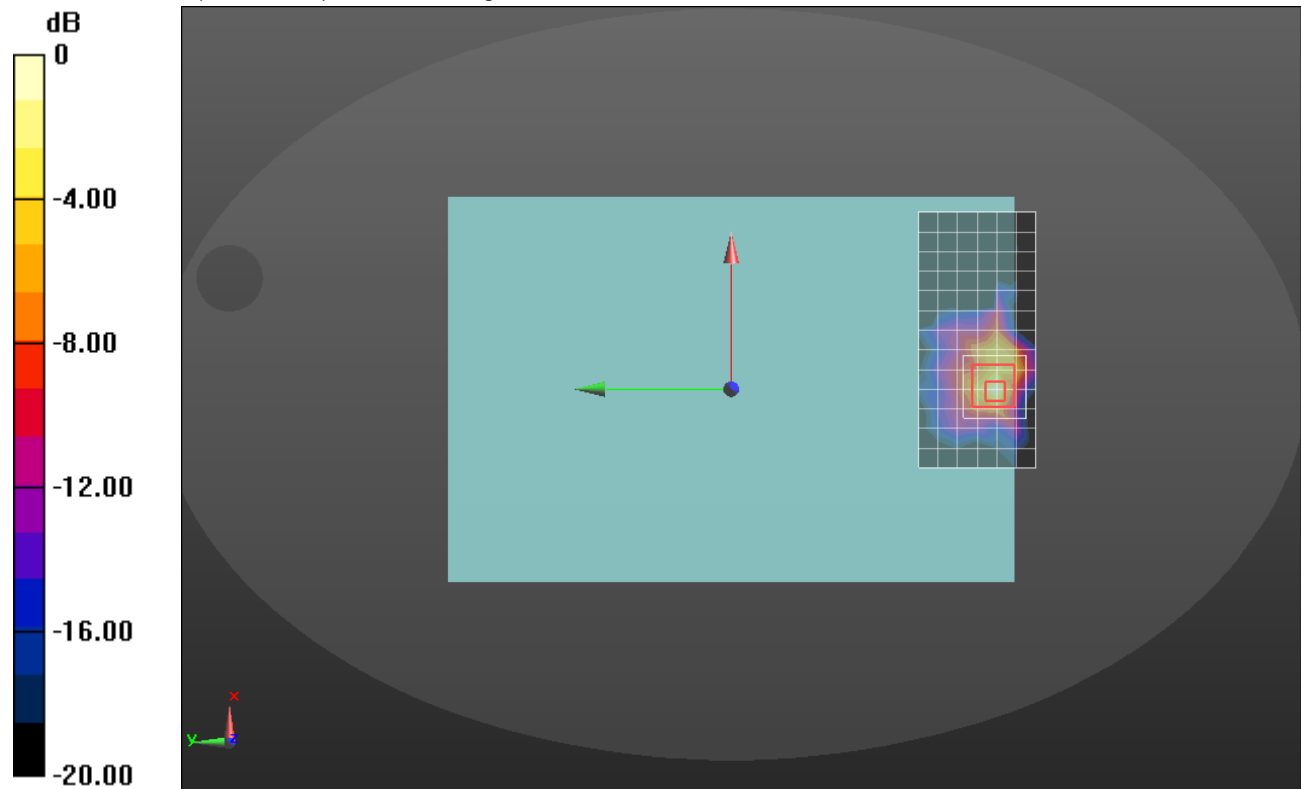
Rear/802.11ac_ch 122 SISO Chan 0/Zoom Scan (9x9x12)/Cube 0: Measurement grid: dx=4mm, dy=4mm, dz=2mm

Reference Value = 12.57 V/m; Power Drift = 0.00 dB

Peak SAR (extrapolated) = 1.76 W/kg

SAR(1 g) = 0.423 W/kg; SAR(10 g) = 0.108 W/kg

Maximum value of SAR (measured) = 0.956 W/kg



0 dB = 0.956 W/kg = -0.20 dBW/kg

Wi-Fi_5.8Ghz

Frequency: 5745 MHz; Duty Cycle: 1:1; Room Ambient Temperature: 24.0°C; Liquid Temperature: 23.0°C

Medium parameters used: $f = 5745 \text{ MHz}$; $\sigma = 6.058 \text{ S/m}$; $\epsilon_r = 47.931$; $\rho = 1000 \text{ kg/m}^3$

DASY5 Configuration:

- Area Scan Setting: Find Secondary Maximum Within: 2.0 dB and with a peak SAR value greater than 0.0012W/kg
- Electronics: DAE4 Sn1447; Calibrated: 2015-09-23
- Probe: EX3DV4 - SN7314; ConvF(3.91, 3.91, 3.91); Calibrated: 2015-09-25;
- Sensor-Surface: 2mm (Mechanical Surface Detection)
- Phantom: ELI v6.0; Type: QDOVA003AA; Serial: TP:2013

Edge 4/802.11a_ch 149 SISO Chain 0 2/Area Scan (5x21x1): Measurement grid: dx=10mm, dy=10mm

Maximum value of SAR (measured) = 0.503 W/kg

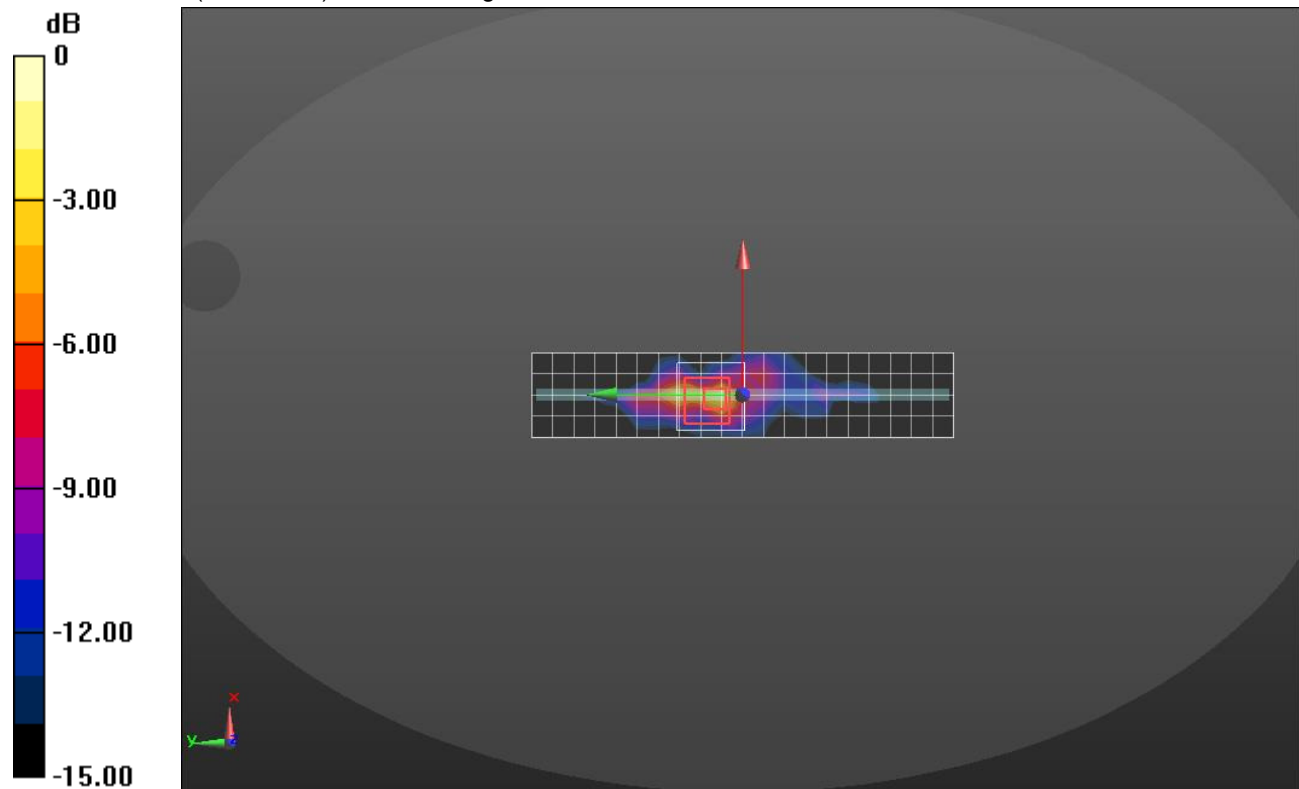
Edge 4/802.11a_ch 149 SISO Chain 0 2/Zoom Scan (9x9x12)/Cube 0: Measurement grid: dx=4mm, dy=4mm, dz=2mm

Reference Value = 11.37 V/m; Power Drift = 0.17 dB

Peak SAR (extrapolated) = 1.21 W/kg

SAR(1 g) = 0.242 W/kg; SAR(10 g) = 0.053 W/kg

Maximum value of SAR (measured) = 0.641 W/kg



0 dB = 0.641 W/kg = -1.93 dBW/kg

Bluetooth

Frequency: 2402 MHz; Duty Cycle: 1:1.29033; Room Ambient Temperature: 24.0°C; Liquid Temperature: 23.0°C
 Medium parameters used (interpolated): $f = 2402$ MHz; $\sigma = 1.886$ S/m; $\epsilon_r = 51.527$; $\rho = 1000$ kg/m³
 DASY5 Configuration:

- Area Scan Setting: Find Secondary Maximum Within: 2.0 dB and with a peak SAR value greater than 0.0012W/kg
- Electronics: DAE4 Sn1468; Calibrated: 2015-09-15
- Probe: EX3DV4 - SN7376; ConvF(7.37, 7.37, 7.37); Calibrated: 2015-09-02;
- Sensor-Surface: 2mm (Mechanical Surface Detection)
- Phantom: ELI v6.0; Type: QDOVA003AA; Serial: TP:2005

Rear/Bluetooth GFSK_ch 0/Area Scan (17x11x1): Measurement grid: dx=12mm, dy=12mm
 Maximum value of SAR (measured) = 0.242 W/kg

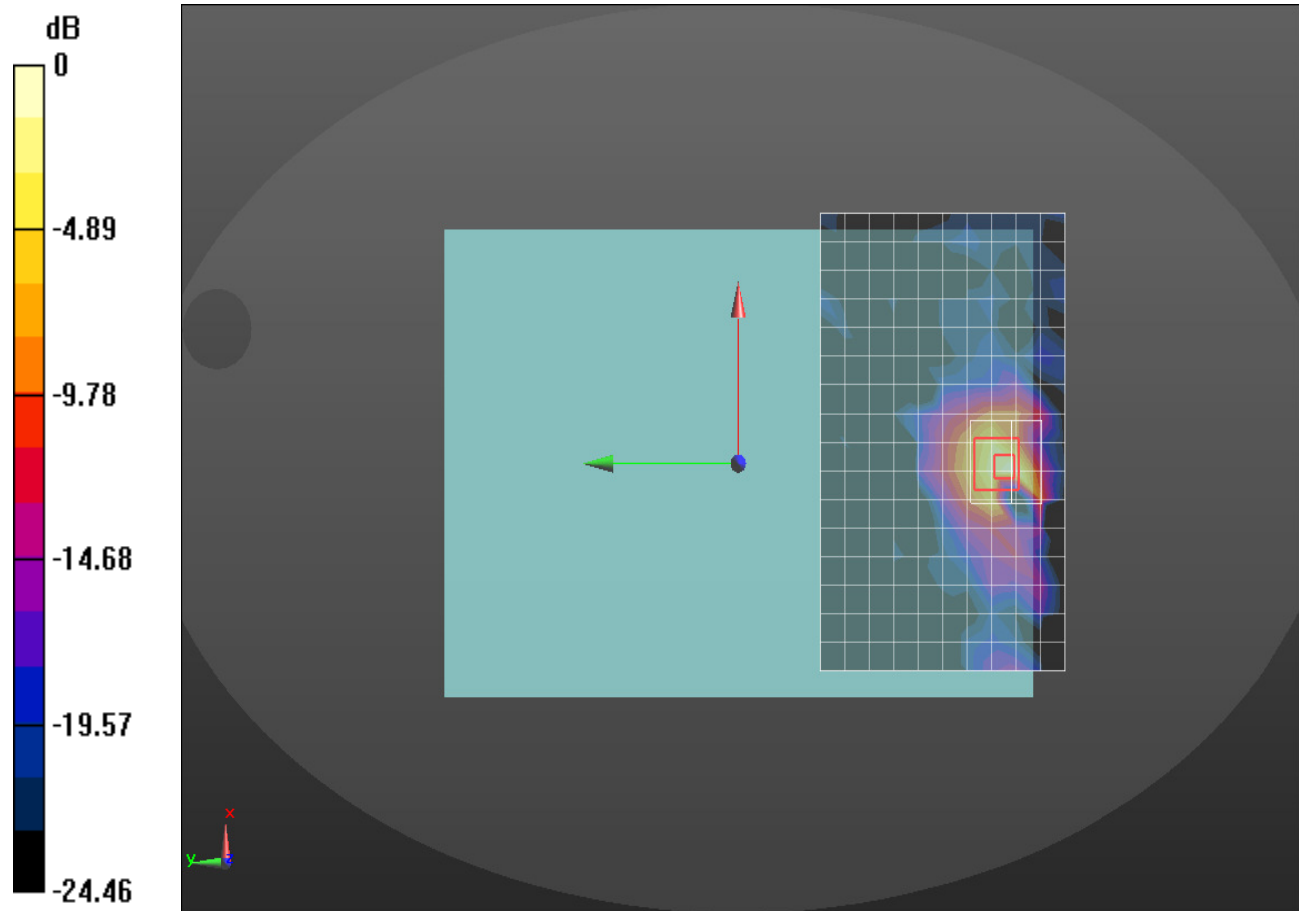
Rear/Bluetooth GFSK_ch 0/Zoom Scan (8x8x7)/Cube 0: Measurement grid: dx=5mm, dy=5mm, dz=5mm

Reference Value = 10.65 V/m; Power Drift = -0.02 dB

Peak SAR (extrapolated) = 0.522 W/kg

SAR(1 g) = 0.174 W/kg; SAR(10 g) = 0.067 W/kg

Maximum value of SAR (measured) = 0.291 W/kg



0 dB = 0.291 W/kg = -5.36 dBW/kg