

TEST REPORT

Equipment Under Test	:	WLAN Phone
Model No.	:	SMT-W6100
Applicant	:	SAMSUNG ELECTRONICS Co., Ltd.
Address of Applicant	:	3351 Michelson Drive, Suite 290, Irvine, California USA (92612)
FCC ID	:	A3LSMTW6100
Date of Receipt	:	2006-02-17
Date of Test(s)	:	2006-03-07 ~ 2006-03-27
Date of Issue	:	2006-04-03

Standards:

**FCC OET Bulletin 65 supplement C,
 ANSI/IEEE C95.1, C95.3**

In the configuration tested, the EUT complied with the standards specified above.

Remarks:

This report details the results of the testing carried out on one sample, the results contained in this test report do not relate to other samples of the same product. The manufacturer should ensure that all products in series production are in conformity with the product sample detailed in this report.

This report may only be reproduced and distributed in full. If the product in this report is used in any configuration other than that detailed in the report, the manufacturer must ensure the new system complies with all relevant standards. Any mention of SGS Testing Korea Co., Ltd. or testing done by SGS Testing Korea Co., Ltd. in connection with distribution or use of the product described in this report must be approved by SGS Testing Korea Co., Ltd. in writing.

Tested by	:	Leo Kim		2006-04-03
------------------	---	---------	--	------------

Approved by	:	Albert Lim		2006-04-03
--------------------	---	------------	--	------------

Contents

1. General Information

1.1	Testing Laboratory.....	3
1.2	Details of Applicant.....	3
1.3	Version of Report.....	3
1.4	Description of EUT(s).....	3
1.5	Test Environment.....	4
1.6	Operation description.....	4
1.7	Evaluation procedures.....	4
1.8	The SAR Measurement System.....	5
1.9	System Components.....	7
1.10	SAR System Verification.....	8
1.11	Tissue Simulant Fluid for the Frequency Band.....	10
1.12	Test Standards and Limits.....	11
2.	Instruments List.....	13
3.	Summary of Results.....	14

APPENDIX

- A. DASY4 SAR Report
- B. Uncertainty Analysis
- C. Photographs of EUT & EUT's Test Setup
- D. Calibration certificate

1. General Information

1.1 Testing Laboratory

SGS Testing Korea Co., Ltd.
 Wireless Div. 2FL, 18-34, Sanbon-dong, Gunpo-si, Gyeonggi-do, Korea 435-040
 Telephone : +82 +31 428 5700
 FAX : +82 +31 427 2371
 Homepage : www.sgstesting.co.kr

1.2 Details of Applicant

Manufacturer : SAMSUNG ELECTRONICS Co., Ltd.
 Address : 259, Gongdan-dong, Kumi-city, Kyung-buk, Korea
 Contact Person : Mu-Seong Kwak
 Phone No. : 82-31-279-4256
 Fax No. : 82-31-279-2296

1.3 Version of Report

Version Number	Date
00	2006-03-16
01	2006-03-28
02	2006-04-03

1.4 Description of EUT(s)

EUT Type	WLAN Phone
Model	SMT-W6100
Serial Number	S63A169333
Hardware Version	-
Software Version	-
Mode of Operation	W-LAN IEEE 802.11 b/g
Maximum RF Conducted Power	17 dBm(11b), 15.50 dBm(11g)
Tx Frequency Range	2412 ~ 2462 MHz
Rx Frequency Range	2412 ~ 2462 MHz
Traffic Channel	1, 6, 11
Antenna Type / Gain	Chip Antenna / 0.68 dBi
Battery Type	3.8 VDC Lithium-Ion

1.5 Test Environment

Ambient temperature	: 22.3 ° C
Tissue Simulating Liquid	: 22.3 ° C
Relative Humidity	: 58 %

1.6 Operation Configuration

The device was controlled by using a Host Note PC. Communication between the device and the tester was established by air link. Measurements were performed on the lowest, middle and highest channels of the operating band. The EUT was set to maximum power level during all tests and at the beginning of each test the battery was fully charged.

The DASY4 system measures power drift during SAR testing by comparing e-field in the same location at the beginning and at the end of measurement.

1.7 EVALUATION PROCEDURES

- Power Reference Measurement Procedures

The Power Reference Measurement and Power Drift Measurements are for monitoring the power drift of the device under test in the batch process. The Minimum distance of probe sensors to surface determines the closest measurement point to phantom surface. The minimum distance of probe sensors to surface is 4 mm. This distance cannot be smaller than the Distance of sensor calibration points to probe tip as defined in the probe properties (for example, 2.7 mm for an ET3DV6 probe type).

- The entire evaluation of the spatial peak values is performed within the Post-processing engine (SEMCAD). The system always gives the maximum values for the 1 g and 10 g cubes. The algorithm to find the cube with highest averaged SAR is divided into the following stages:

1. The extraction of the measured data (grid and values) from the Zoom Scan.
2. The calculation of the SAR value at every measurement point based on all stored data (A/D values and measurement parameters)
3. The generation of a high-resolution mesh within the measured volume
4. The interpolation of all measured values from the measurement grid to the high-resolution grid
5. The extrapolation of the entire 3-D field distribution to the phantom surface over the distance from sensor to surface
6. The calculation of the averaged SAR within masses of 1g and 10g.

The probe is calibrated at the center of the dipole sensors that is located 1 to 2.7mm away from the probe tip. During measurements, the probe stops shortly above the phantom surface, depending on the probe and the surface detecting system. Both distances are included as parameters in the probe configuration file. The software always knows exactly how far away the measured point is from the surface. As the probe cannot directly measure at the surface, the values between the deepest measured point and the surface must be extrapolated. The angle between the probe axis and the surface normal line is less than 30 degree.

In the Area Scan, the gradient of the interpolation function is evaluated to find all the extreme of the SAR distribution. The uncertainty on the locations of the extreme is less than 1/20 of the grid size. Only local maximum within -2 dB of the global maximum are searched and passed for the Cube Scan measurement. In the Cube Scan, the interpolation function is used to extrapolate the Peak SAR from the lowest measurement points to the inner phantom surface (the extrapolation distance). The uncertainty increases with the extrapolation distance. To keep the uncertainty within 1% for the 1 g and 10 g cubes, the extrapolation distance should not be larger than 5mm.

The maximum search is automatically performed after each area scan measurement. It is based on splines in two or three dimensions. The procedure can find the maximum for most SAR distributions even with relatively large grid spacing. After the area scanning measurement, the probe is automatically moved to a position at the interpolated maximum. The following scan can directly use this position for reference, e.g., for a finer resolution grid or the cube evaluations. The 1g and 10g peak evaluations are only available for the predefined cube 7x7x7 scans. The routines are verified and optimized for the grid dimensions used in these cube measurements. The measured volume of 30x30x30mm contains about 30g of tissue. The first procedure is an extrapolation (incl. Boundary correction) to get the points between the lowest measured plane and the surface. The next step uses 3D interpolation to get all points within the measured volume. In the last step, a 1g cube is placed numerically into the volume and its averaged SAR is calculated. This cube is the moved around until the highest averaged SAR is found. If the highest SAR is found at the edge of the measured volume, the system will issue a warning: higher SAR values might be found outside of the measured volume. In that case the cube measurement can be repeated, using the new interpolated maximum as the center.

1.8 The SAR Measurement System

A photograph of the SAR measurement System is given in Fig. a. This SAR Measurement System uses a Computer-controlled 3-D stepper motor system (Speag Dasy 4 professional system). A Model ET3DV6 1782 E-field probe is used to determine the internal electric fields. The SAR can be obtained from the equation $SAR = \sigma (|E_i|^2) / \rho$ where σ and ρ are the conductivity and mass density of the tissue-simulant. The DASY4 system for performing compliance tests consists of the following items:

- A standard high precision 6-axis robot (Staubli RX family) with controller, teach pendant and software. An arm extension for accommodating the data acquisition electronics (DAE).

- A dosimeter probe, i.e., an isotropic E-field probe optimized and calibrated for usage in tissue simulating liquid. The probe is equipped with an optical surface detector system.
- A data acquisition electronics (DAE) which performs the signal amplification, signal multiplexing, AD-conversion, offset measurements, mechanical surface detection, collision detection, etc. The unit is battery powered with standard or rechargeable batteries. The signal is optically transmitted to the EOC.

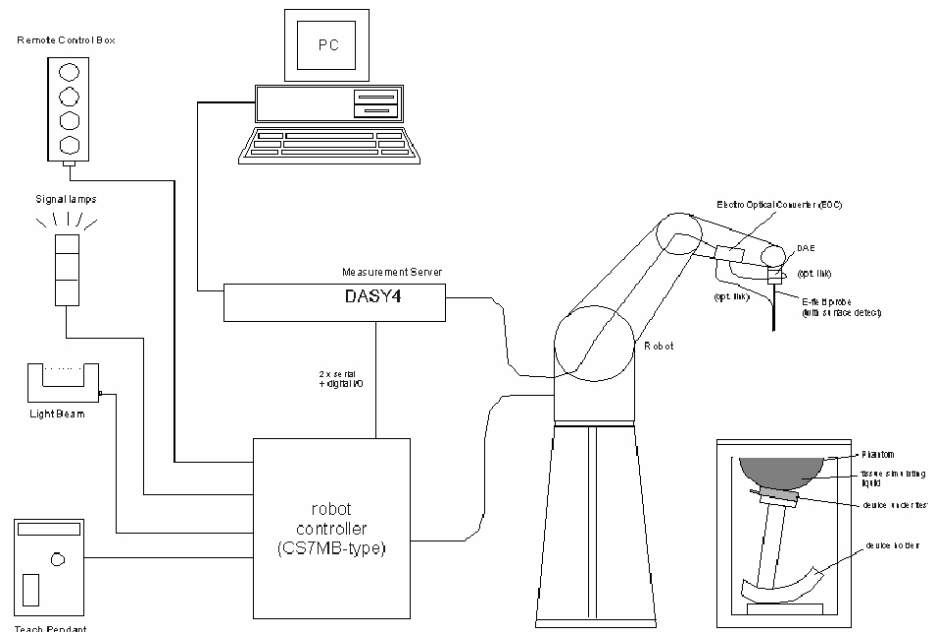


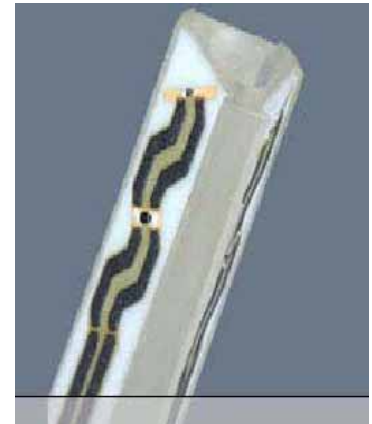
Fig a. The microwave circuit arrangement used for SAR system verification

- The Electro-optical converter (EOC) performs the conversion between optical and electrical of the signals for the digital communication to the DAE and for the analog signal from the optical surface detection. The EOC is connected to the measurement server.
- The function of the measurement server is to perform the time critical tasks such as signal filtering, control of the robot operation and fast movement interrupts.
- A probe alignment unit which improves the (absolute) accuracy of the probe positioning.
- A computer operating Windows 2000 or Windows XP.
- DASY4 software.
- Remote control with teach pendant and additional circuitry for robot safety such as warning lamps, etc.
- The SAM twin phantom enabling testing left-hand and right-hand usage.
- The device holder for handheld mobile phones.
- Tissue simulating liquid mixed according to the given recipes.
- Validation dipole kits allowing to validate the proper functioning of the system.

1.9 System Components

ET3DV6 E-Field Probe

Construction	: Symmetrical design with triangular core Built-in shielding against static charges PEEK enclosure material (resistant to organic solvents, e.g. glycol).
Calibration	: In air from 10 MHz to 2.5 GHz In brain simulating tissue at frequencies of 900 MHz and 1.8 GHz (accuracy $\pm 8\%$)
Frequency	: 10 MHz to >6 GHz; Linearity: ± 0.2 dB (30 MHz to 3 GHz)
Directivity	: ± 0.2 dB in brain tissue (rotation around probe axis) ± 0.4 dB in brain tissue (rotation normal to probe axis)
Dynamic Range	: $5 \mu\text{W/g}$ to $>100 \text{ mW/g}$; Linearity: ± 0.2 dB
Srfce. Detect	: ± 0.2 mm repeatability in air and clear liquids over diffuse reflecting surfaces
Dimensions	: Overall length: 330 mm Tip length: 16 mm Body diameter: 12 mm Tip diameter: 6.8 mm Distance from probe tip to dipole centers: 2.7 mm
Application	: General dosimetry up to 3 GHz Compliance tests of mobile phone



ET3DV6 E-Field Probe

NOTE:

1. The Probe parameters have been calibrated by the SPEAG. Please reference "APPENDIX D" for the Calibration Certification Report.

SAM Phantom

Construction: The SAM Phantom is constructed of a fiberglass shell integrated in a wooden table. The shape of the shell is based on data from an anatomical study designed to determine the maximum exposure in at least 90% of all users. It enables the dosimetric evaluation of left and right hand phone usage as well as body mounted usage at the flat phantom region. A cover prevents the evaporation of the liquid. Reference markings on the Phantom allow the complete setup of all predefined phantom positions and measurement grids by manually teaching three points in the robot



SAM Phantom

Shell Thickness: 2.0 ± 0.1 mm
 Filling Volume: Approx. 25 liters

DEVICE HOLDER

Construction In combination with the Twin SAM Phantom V4.0/V4.0C or Twin SAM, the Mounting Device (made from POM) enables the rotation of the mounted transmitter in spherical coordinates, whereby the rotation point is the ear opening. The devices can be easily and accurately positioned according to IEC, IEEE, CENELEC, FCC or other specifications. The device holder can be locked at different phantom locations (left head, right head, flat phantom).



Device Holder

1.10 SAR System Verification

The microwave circuit arrangement for system verification is sketched in Fig. b. The daily system accuracy verification occurs within the flat section of the SAM phantom. A SAR measurement was performed to see if the measured SAR was within +/- 10% from the target SAR values. These tests were done at 2450MHz. The tests were conducted on the same days as the measurement of the EUT. The obtained results from the system accuracy verification are displayed in the table 1 (SAR values are normalized to 1W forward power delivered to the dipole). During the tests, the ambient temperature of the laboratory was in the range 22.3 °C, the relative humidity was in the range 62% and the liquid depth above the ear reference points was above 15 cm in all the cases. It is seen that the system is operating within its specification, as the results are within acceptable tolerance of the reference values.

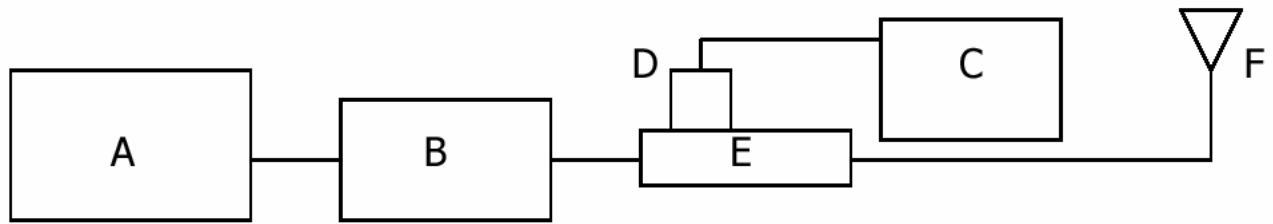


Fig b. The microwave circuit arrangement used for SAR system verification

- A. Agilent Model E4421B Signal Generator
- B. EMPOWER Model 2001-BBS3Q7ECK Amplifier
- C. Agilent Model E4419B Power Meter
- D. Agilent Model 9300H Power Sensor
- E. Agilent Model 778D Dual directional coupling
- F. Reference dipole Antenna



Photo of the dipole Antenna

System Validation Results

Validation Kit	Tissue	Target SAR 1 g (1 W)	Measured SAR 1 g (1 W)	Deviation (%)	Date	Liquid Temp. (°C)
D2450V2 S/N: 734	2450 MHz Brain	52.4 W/kg	54 W/kg	3.05	Mar. 7, 2006	22.3
D2450V2 S/N: 734	2450 MHz Brain	52.4 W/kg	53.6 W/kg	2.29	Mar. 9, 2006	22.1
D2450V2 S/N: 734	2450 MHz Brain	52.4 W/kg	54.4 W/kg	3.82	Mar. 27, 2006	22.0

Table 1. Results system validation

1.11 Tissue Simulant Fluid for the Frequency Band

The dielectric properties for this simulant fluid were measured by using the Agilent Model 85070D Dielectric Probe (rates frequency band 200 MHz to 20 GHz) in conjunction with Agilent E5070B Network Analyzer(300 KHz-3000 MHz) by using a procedure detailed in Section V.

f (MHz)	Tissue type	Limits / Measured	Dielectric Parameters		
			Permittivity	Conductivity	Simulated Tissue Temp(°C)
2450	Head	Measured, 2006-03-07	38.1	1.91	22.3
		Recommended Limits	39.2	1.8	22.0
2450	Head	Measured, 2006-03-27	39.3	1.93	22.0
		Recommended Limits	39.2	1.8	22.0

f (MHz)	Tissue type	Limits / Measured	Dielectric Parameters		
			Permittivity	Conductivity	Simulated Tissue Temp(°C)
2450	Body	Measured, 2006-03-09	52.15	2.01	22.3
		Recommended Limits	52.7	1.95	22.0

The composition of the brain tissue simulating liquid

The following tissue formulations are provided for reference only as some of the parameters have not been thoroughly verified. The composition of ingredients may be modified accordingly to achieve the desired target tissue parameters required for routine SAR evaluation.

Ingredients (% by weight)	Frequency (MHz)									
	450		835		915		1900		2450	
Tissue Type	Head	Body	Head	Body	Head	Body	Head	Body	Head	Body
Water	38.56	51.16	41.45	52.4	41.05	56.0	54.9	40.4	62.7	73.2
Salt (NaCl)	3.95	1.49	1.45	1.4	1.35	0.76	0.18	0.5	0.5	0.04
Sugar	56.32	46.78	56.0	45.0	56.5	41.76	0.0	58.0	0.0	0.0
HEC	0.98	0.52	1.0	1.0	1.0	1.21	0.0	1.0	0.0	0.0
Bactericide	0.19	0.05	0.1	0.1	0.1	0.27	0.0	0.1	0.0	0.0
Triton X-100	0.0	0.0	0.0	0.0	0.0	0.0	0.0	0.0	36.8	0.0
DGBE	0.0	0.0	0.0	0.0	0.0	0.0	44.92	0.0	0.0	26.7
Dielectric Constant	43.42	58.0	42.54	56.1	42.0	56.8	39.9	54.0	39.8	52.5
Conductivity (S/m)	0.85	0.83	0.91	0.95	1.0	1.07	1.42	1.45	1.88	1.78

Salt: 99+% Pure Sodium Chloride

Sugar: 98+% Pure Sucrose

Water: De-ionized, 16 MΩ⁺ resistivity

HEC: Hydroxyethyl Cellulose

DGBE: 99+% Di(ethylene glycol) butyl ether, [2-(2-butoxyethoxy)ethanol]

Triton X-100 (ultra pure): Polyethylene glycol mono [4-(1,1,3,3-tetramethylbutyl)phenyl]ether

1.12 Test Standards and Limits

According to FCC 47CFR §2.1093(d) The limits to be used for evaluation are based generally on criteria published by the American National Standards Institute (ANSI) for localized specific absorption rate (“SAR”) in Section 4.2 of “IEEE Standard for Safety Levels with Respect to Human Exposure to Radio Frequency Electromagnetic Fields, 3 kHz to 300 GHz,” ANSI/IEEE C95.3–2003, Copyright 2003 by the Institute of Electrical and Electronics Engineers, Inc., New York, New York 10017. These criteria for SAR evaluation are similar to those recommended by the National Council on Radiation Protection and Measurements (NCRP) in “Biological Effects and Exposure Criteria for Radio frequency Electromagnetic Fields,” NCRP Report No. 86, Section 17.4.5. Copyright NCRP, 1986, Bethesda, Maryland 20814. SAR is a measure of the rate of energy absorption due to exposure to an RF transmitting source. SAR values have

been related to threshold levels for potential biological hazards. The criteria to be used are specified in paragraphs (d)(1) and (d)(2) of this section and shall apply for portable devices transmitting in the frequency range from 100 kHz to 6 GHz. Portable devices that transmit at frequencies above 6 GHz are to be evaluated in terms of the MPE limits specified in § 1.1310 of this chapter. Measurements and calculations to demonstrate compliance with MPE field strength or power density limits for devices operating above 6 GHz should be made at a minimum distance of 5 cm from the radiating source.

(1) Limits for Occupational/Controlled exposure: 0.4 W/kg as averaged over the whole-body and spatial peak SAR not exceeding 8 W/kg as averaged over any 1 gram of tissue (defined as a tissue volume in the shape of a cube). Exceptions are the hands, wrists, feet and ankles where the spatial peak SAR shall not exceed 20 W/kg, as averaged over an 10 grams of tissue (defined as a tissue volume in the shape of a cube). Occupational/Controlled limits apply when persons are exposed as a consequence of their employment provided these persons are fully aware of and exercise control over their exposure. Awareness of exposure can be accomplished by use of warning labels or by specific training or education through appropriate means, such as an RF safety program in a work environment.

(2) Limits for General Population/Uncontrolled exposure: 0.08 W/kg as averaged over the whole-body and spatial peak SAR not exceeding 1.6 W/kg as averaged over any 1 gram of tissue (defined as a tissue volume in the shape of a cube). Exceptions are the hands, wrists, feet and ankles where the spatial peak SAR shall not exceed 4 W/kg, as averaged over any 10 grams of tissue (defined as a tissue volume in the shape of a cube). General Population/Uncontrolled limits apply when the general public may be exposed, or when persons that are exposed as a consequence of their employment may not be fully aware of the potential for exposure or do not exercise control over their exposure. Warning labels placed on consumer devices such as cellular telephones will not be sufficient reason to allow these devices to be evaluated subject to limits for occupational/controlled exposure in paragraph (d)(1) of this section.(Table .4)

Human Exposure	Uncontrolled Environment General Populaion	Controlled Environment Occupational
Partial Peak SAR (Brain)	1.60 m W/g	8.00 m W/g
Partial Average SAR (Whole Body)	0.08 m W/g	0.40 m W/g
Partial Peak SAR (Hands/Feet/Ankle/Wrist)	4.00 m W/g	20.00 m W/g

Table .4 RF exposure limits

2. Instruments List

Maunfacturer	Device	Type	Serial Number	Due date of Calibration
Stäubli	Robot	RX90BL	F03/5W05A1/A/01	N/A
Schmid& Partner Engineering AG	Dosimetric E-Field Probe	ET3DV6	1782	April 28, 2006
Schmid& Partner Engineering AG	2450 MHz System Validation Dipole	D2450V2	734	August 23, 2006
Schmid& Partner Engineering AG	Data acquisition Electronics	DAE3	567	September 21, 2006
Schmid& Partner Engineering AG	Software	DASY 4 V4.5	-	N/A
Schmid& Partner Engineering AG	Phantom	SAM Phantom V4.0	TP-1299 TP-1300	N/A
Agilent	Network Analyzer	E5070B	MY42100282	May 20, 2006
Agilent	Dielectric Probe Kit	85070D	2184	N/A
Agilent	Power Meter	E4419B	GB43311126 GB43311125	December 8, 2006
Agilent	Power Sensor	E9300H	MY41495307 MY41495308 MY41495314	December 8, 2006
Agilent	Mobile Test Unit	E5515C	GB43345198	May 20, 2006

3. Summary of Results

W-LAN 2.4GHz Head SAR

Ambient Temperature (°C)	22.3
Liquid Temperature (°C)	22.3
Date	March 8 & 27, 2006

Head	Position	Data Rate (Mbps)	Traffic Channel		Conducted Power(dBm)		1 g SAR (W/kg)	SAR Limits	Result	
			Frequency (MHz)	Channel	Before	After				
Left	Cheek	11	2412	1	16.54	16.55	1.24	1.6	Complied	
			2437	6	16.81	16.80	1.25		Complied	
			2462	11	17.00	17.00	1.09		Complied	
		54	2437	6	15.36	15.33	0.329		Complied	
	15 ° Tilt	11	2412	1	16.51	16.52	1.25		Complied	
			2437	6	16.90	16.87	1.23		Complied	
			2462	11	17.00	17.00	1.06		Complied	
		54	2437	6	15.40	15.38	0.360		Complied	
	Right	Cheek	11	2412	1	16.52	16.52		1.09	Complied
				2437	6	16.83	16.80		1.06	Complied
				2462	11	17.00	17.00		0.949	Complied
			54	2437	6	15.33	15.35		0.325	Complied
15 ° Tilt		11	2412	1	16.52	16.50	1.03	Complied		
			2437	6	16.83	16.81	1.05	Complied		
			2462	11	17.00	17.00	0.884	Complied		
		54	2437	6	15.34	15.34	0.324	Complied		

W-LAN 2.4GHz Body SAR

Ambient Temperature (°C)	22.3
Liquid Temperature (°C)	22.3
Date	March 9, 2006

EUT Position	Data rate (Mbps)	Traffic Channel		Conducted Power(dBm)		1 g SAR	Result
		Frequency (MHz)	Channel	Before	After		
Front	11	2412	1	16.51	16.53	1.27	Complied
Front	54			15.43	15.42	0.324	Complied
Front	11	2437	6	16.81	16.82	1.21	Complied
Front	54			15.33	15.32	0.326	Complied
Front	11	2462	11	17.00	17.00	1.06	Complied
Front	54			15.50	15.50	0.285	Complied
Rear	11	2412	1	16.50	16.50	0.560	Complied
Rear	54			15.44	15.42	0.146	Complied
Rear	11	2437	6	16.80	16.81	0.539	Complied
Rear	54			15.30	15.32	0.151	Complied
Rear	11	2462	11	17.00	17.00	0.478	Complied
Rear	54			15.50	15.50	0.136	Complied

Appendix

List

Appendix A	Photographs	- EUT - Test Setup
Appendix B	Uncertainty Analysis	
Appendix C	DASY4 Report (Plots of the SAR Measurements)	- 2450 MHz Validation Test - W-LAN 2.4 GHz SAR Test
Appendix D	Calibration Certificate	- PROBE - DAE - DIPOLE

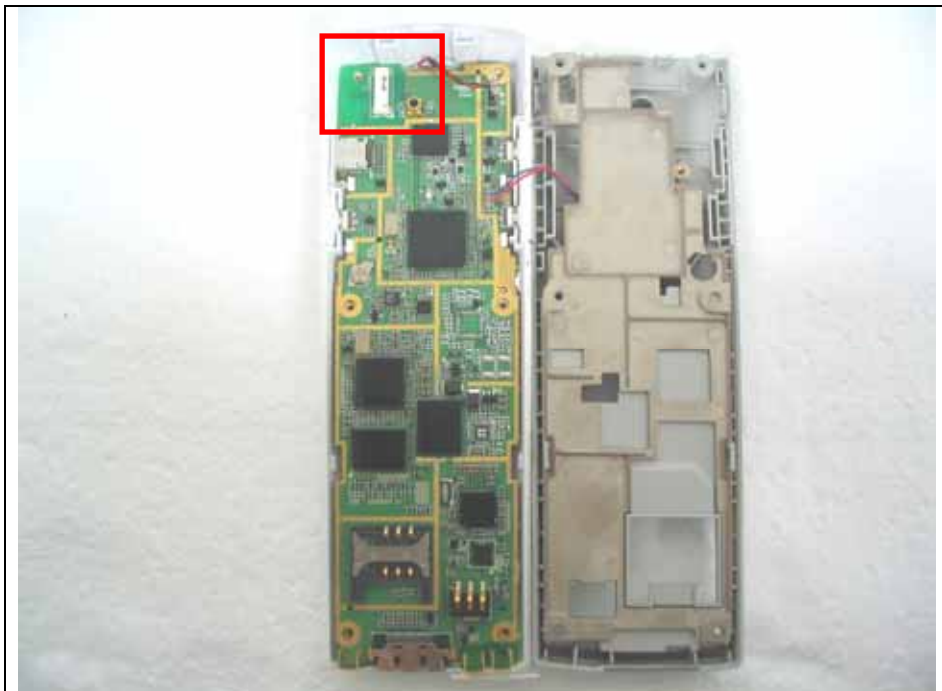
Appendix A

EUT Photographs

Front View of EUT



Antenna of EUT



Rear View of EUT



Right View of EUT



Left View of EUT



Top View of EUT

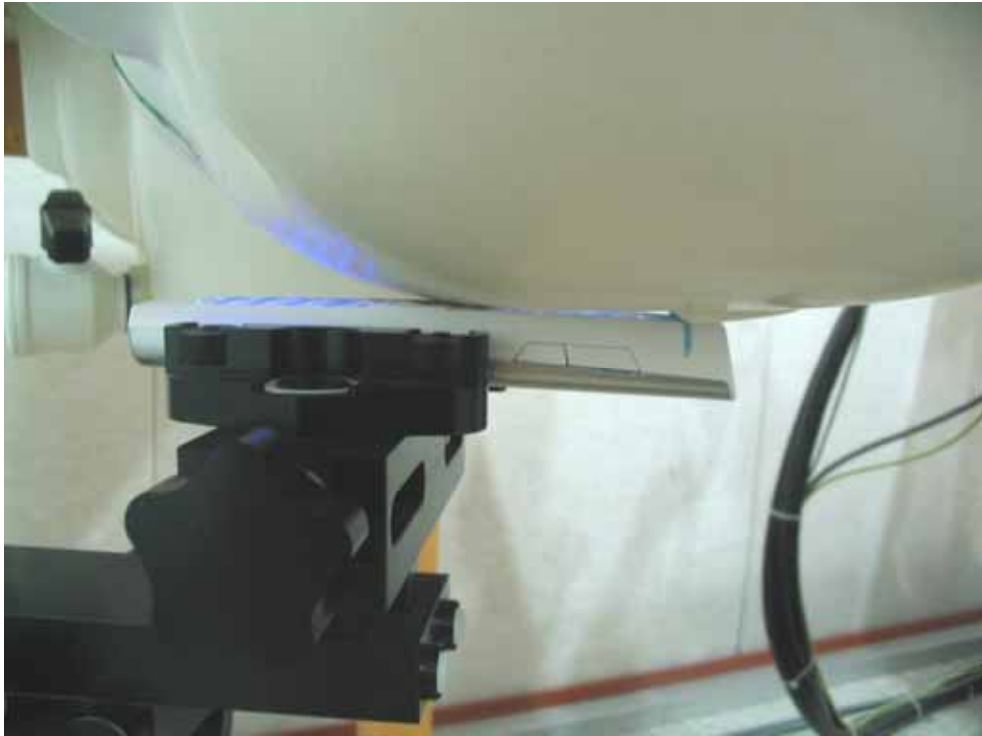


Bottom View of EUT



Test Setup Photographs

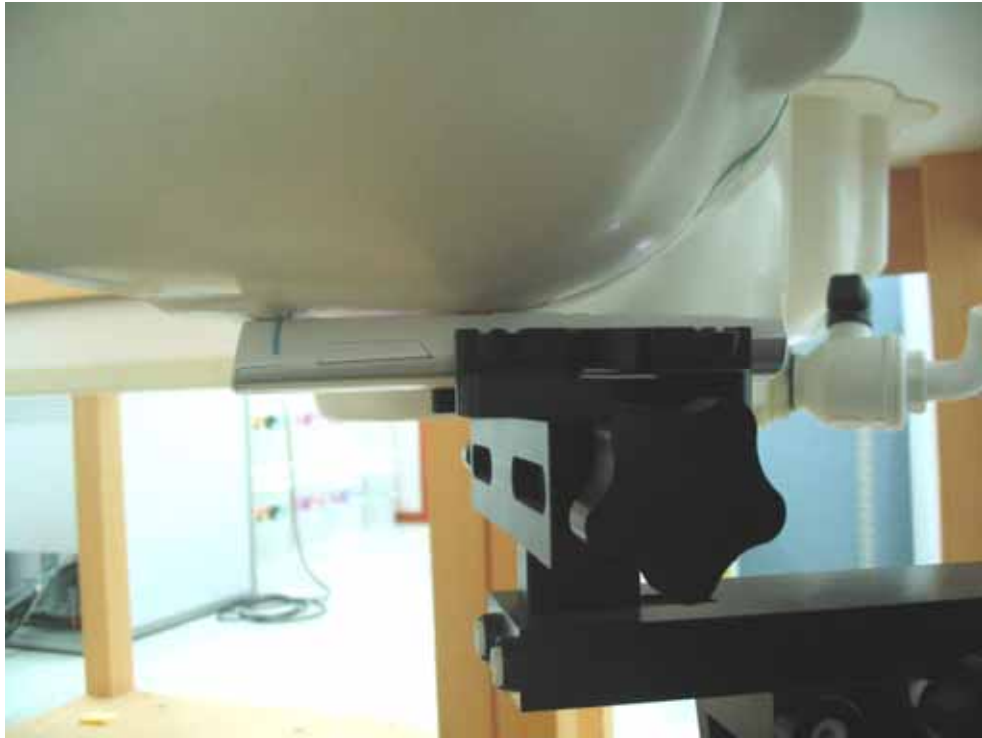
Left Cheek Position



Left Tilt Position



Right Cheek Position



Right Tilt Position



Body Front Position



Body Rear Position



Appendix B

Uncertainty Analysis

Uncertainty of SAR equipments for measurement

Items	Uncertainty value %	Probability Distribution	Divisor	ci 1 1g	Standard unc (1g)	vi or Veff
Measurement System						
Probe calibration	4.8	normal	1	1	4.8%	∞
Axial isotropy	4.7	rectangular	$\sqrt{3}$	$(1-c_p)^{1/2}$	1.9%	∞
Hemispherical isotropy	9.6	rectangular	$\sqrt{3}$	$(c_p)^{1/2}$	3.9%	∞
Boundary effects	1.0	rectangular	$\sqrt{3}$	1	0.6%	∞
Linearity	4.7	rectangular	$\sqrt{3}$	1	2.7%	∞
System Detection limits	1.0	rectangular	$\sqrt{3}$	1	0.6%	∞
Readout Electronics	1.0	normal	1	1	1.0%	∞
Response time	0.8	rectangular	$\sqrt{3}$	1	0.5%	∞
Integration time	2.6	rectangular	$\sqrt{3}$	1	1.5%	∞
RF Ambient Conditions	3.0	rectangular	$\sqrt{3}$	1	1.7%	∞
Mech. constrains of robot	0.4	rectangular	$\sqrt{3}$	1	0.2%	∞
Probe positioning	2.9	rectangular	$\sqrt{3}$	1	1.7%	∞
Extrap. and integration	1.0	rectangular	$\sqrt{3}$	1	0.6%	∞

Uncertainty of measurements

Test Sample Related						
Device positioning	2.9	normal	1	1	2.9%	145
Device holder uncertainty	3.6	normal	1	1	3.6%	5
Power drift	5.0	rectangular	$\sqrt{3}$	1	2.9%	∞
Phantom and Setup						
Phantom uncertainty	4.0	rectangular	$\sqrt{3}$	1	2.3%	∞
Liquid conductivity(target)	5.0	rectangular	$\sqrt{3}$	0.64	1.8%	∞
Liquid conductivity(meas.)	5.0	normal	1	0.64	3.2%	∞
Liquid permittivity(target)	5.0	rectangular	$\sqrt{3}$	0.6	1.7%	∞
Liquid permittivity(meas.)	5.0	normal	1	0.6	3.0%	∞

Uncertainty of SAR system

Combined Standard Uncertainty				10.6%	
Expanded Standard Uncertainty(k=2)				20.6%	



Report File No. : STROS-06-008
Date of Issue : 2006-04-03
Page : 25 / 82

Appendix C

Test Plot - DASY4 Report

2450 MHz Validation Test

Date/Time: 2006-03-07 11:41:21

Test Laboratory: SGS Testing Korea

Validation

DUT: Dipole 2450 MHz; Type: D2450V2; Serial: D2450V2 - SN:734

Communication System: CW; Frequency: 2450 MHz; Duty Cycle: 1:1

Medium: HSL 2450MHz Medium parameters used: $f = 2450$ MHz; $\sigma = 1.91$ mho/m; $\epsilon_r = 38.1$; $\rho =$

1000 kg/m³

Phantom section: Flat Section

DASY4 Configuration:

- Probe: ET3DV6 - SN1782; ConvF(4.36, 4.36, 4.36); Calibrated: 2004-04-28

- Sensor-Surface: 4mm (Mechanical And Optical Surface Detection)

- Electronics: DAE3 Sn567; Calibrated: 2005-09-21

- Phantom: SAM MIC #2000-93 with CRP; Type: SAM MIC #2000-93; Serial: TP-1299

- Measurement SW: DASY4, V4.5 Build 19; Postprocessing SW: SEMCAD, V1.8 Build 146

Validation Test/Area Scan (61x61x1): Measurement grid: dx=10mm, dy=10mm

Maximum value of SAR (interpolated) = 15.9 mW/g

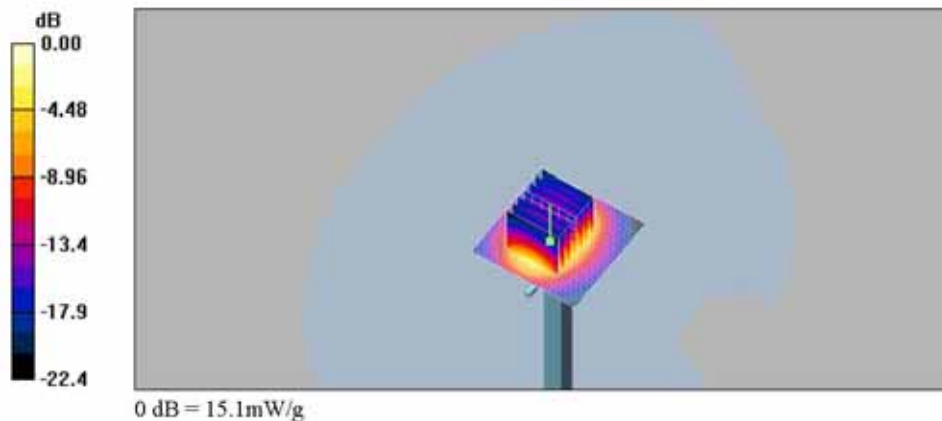
Validation Test/Zoom Scan (7x7x7)/Cube 0: Measurement grid: dx=5mm, dy=5mm, dz=5mm

Reference Value = 94.7 V/m; Power Drift = 0.00 dB

Peak SAR (extrapolated) = 27.8 W/kg

SAR(1 g) = 13.5 mW/g; SAR(10 g) = 6.26 mW/g

Maximum value of SAR (measured) = 15.1 mW/g



Date/Time: 2006-03-09 7:10:26

Test Laboratory: SGS Testing Korea

Validation

DUT: Dipole 2450 MHz; Type: D2450V2; Serial: D2450V2 - SN:734

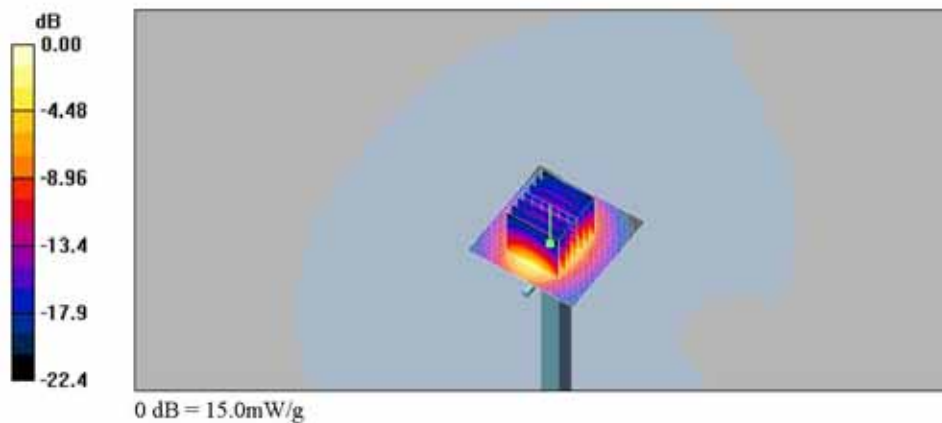
Communication System: CW; Frequency: 2450 MHz; Duty Cycle: 1:1
 Medium: HSL 2450MHz Medium parameters used: $f = 2450$ MHz; $\sigma = 1.91$ mho/m; $\epsilon_r = 38.1$; $\rho = 1000$ kg/m³
 Phantom section: Flat Section

DASY4 Configuration:

- Probe: ET3DV6 - SN1782; ConvF(4.36, 4.36, 4.36); Calibrated: 2004-04-28
- Sensor-Surface: 4mm (Mechanical And Optical Surface Detection)
- Electronics: DAE3 Sn567; Calibrated: 2005-09-21
- Phantom: SAM MIC #2000-93 with CRP; Type: SAM MIC #2000-93; Serial: TP-1299
- Measurement SW: DASY4, V4.5 Build 19; Postprocessing SW: SEMCAD, V1.8 Build 146

Validation Test / Area Scan (61x61x1): Measurement grid: dx=10mm, dy=10mm
 Maximum value of SAR (interpolated) = 15.7 mW/g

Validation Test / Zoom Scan (7x7x7)/Cube 0: Measurement grid: dx=5mm, dy=5mm, dz=5mm
 Reference Value = 94.6 V/m; Power Drift = -0.054 dB
 Peak SAR (extrapolated) = 27.6 W/kg
 SAR(1 g) = 13.4 mW/g; SAR(10 g) = 6.24 mW/g
 Maximum value of SAR (measured) = 15.0 mW/g



Date/Time: 2006-03-27 4:56:21

Test Laboratory: SGS Testing Korea

Validation

DUT: Dipole 2450 MHz; Type: D2450V2; Serial: D2450V2 - SN:734

Communication System: CW; Frequency: 2450 MHz; Duty Cycle: 1:1

Medium: HSL 2450MHz Medium parameters used: $f = 2450$ MHz; $\sigma = 1.93$ mho/m; $\epsilon_r = 39.3$; $\rho = 1000$ kg/m³

Phantom section: Flat Section

DASY4 Configuration:

- Probe: ET3DV6 - SN1782; ConvF(4.36, 4.36, 4.36); Calibrated: 2004-04-28
- Sensor-Surface: 4mm (Mechanical And Optical Surface Detection)
- Electronics: DAE3 Sn567; Calibrated: 2005-09-21
- Phantom: SAM MIC #2000-93 with CRP; Type: SAM MIC #2000-93; Serial: TP-1299
- Measurement SW: DASY4, V4.5 Build 19; Postprocessing SW: SEMCAD, V1.8 Build 146

Validation Test with DAE567/Area Scan (61x61x1): Measurement grid: dx=10mm, dy=10mm

Maximum value of SAR (interpolated) = 16.1 mW/g

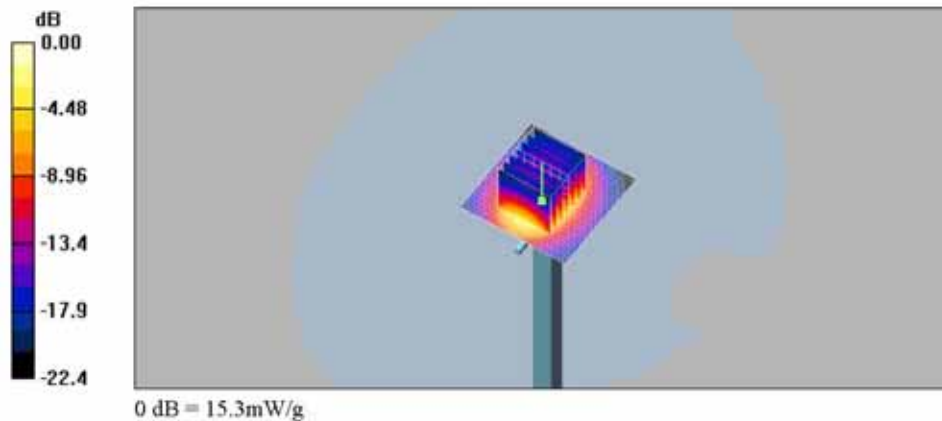
Validation Test with DAE567/Zoom Scan (7x7x7)/Cube 0: Measurement grid: dx=5mm, dy=5mm, dz=5mm

Reference Value = 98.5 V/m; Power Drift = -0.00dB

Peak SAR (extrapolated) = 27.9 W/kg

SAR(1 g) = 13.6 mW/g; SAR(10 g) = 6.27 mW/g

Maximum value of SAR (measured) = 15.3 mW/g



2.4 GHz SAR Test

Date/Time: 2006-03-08 6:30:13

Test Laboratory: SGS Testing Korea

Left_Contact_Low_11M

DUT: SMT-W6100; Type: Bar; Serial: S63A169333

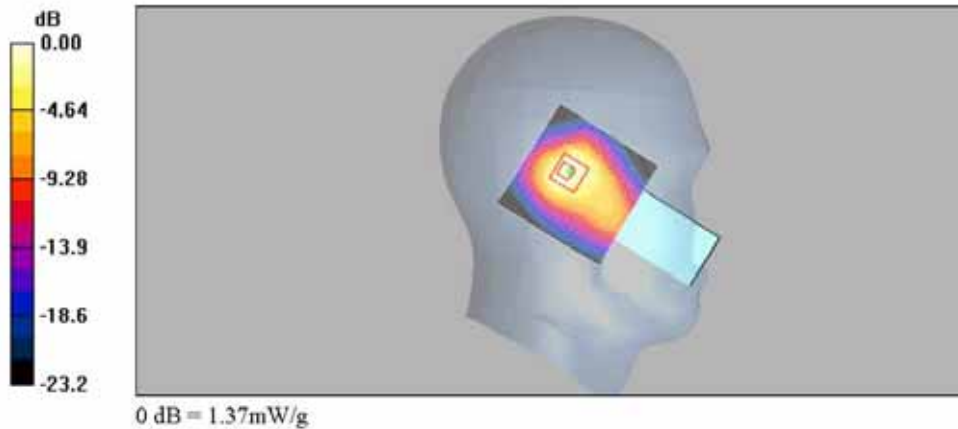
Communication System: WLAN; Frequency: 2412 MHz; Duty Cycle: 1:1
 Medium: HSL 2450MHz Medium parameters used: $f = 2412 \text{ MHz}$; $\sigma = 1.86 \text{ mho/m}$; $\epsilon_r = 38.3$; $\rho = 1000 \text{ kg/m}^3$
 Phantom section: Left Section

DASY4 Configuration:

- Probe: ET3DV6 - SN1782; ConvF(4.36, 4.36, 4.36); Calibrated: 2004-04-28
- Sensor-Surface: 4mm (Mechanical And Optical Surface Detection)
- Electronics: DAE3 Sn567; Calibrated: 2005-09-21
- Phantom: SAM MIC #2000-93 with CRP; Type: SAM MIC #2000-93; Serial: TP-1299
- Measurement SW: DASY4, V4.5 Build 19; Postprocessing SW: SEMCAD, V1.8 Build 146

Left_Contact_Low_11Mbps/Area Scan (61x61x1): Measurement grid: $dx=15\text{mm}$, $dy=15\text{mm}$
 Maximum value of SAR (interpolated) = 1.47 mW/g

Left_Contact_Low_11Mbps/Zoom Scan (7x7x7)/Cube 0: Measurement grid: $dx=5\text{mm}$, $dy=5\text{mm}$, $dz=5\text{mm}$
 Reference Value = 28.4 V/m; Power Drift = 0.168 dB
 Peak SAR (extrapolated) = 2.44 W/kg
 SAR(1 g) = 1.24 mW/g; SAR(10 g) = 0.616 mW/g
 Maximum value of SAR (measured) = 1.37 mW/g



Date/Time: 2006-03-08 6:03:26

Test Laboratory: SGS Testing Korea

Left_Contact_Mid_11M

DUT: SMT-W6100; Type: Bar; Serial: S63A169333

Communication System: WLAN; Frequency: 2437 MHz; Duty Cycle: 1:1

Medium: HSL 2450MHz Medium parameters used: $f = 2437$ MHz; $\sigma = 1.89$ mho/m; $\epsilon_r = 38.2$; $\rho = 1000$ kg/m³

Phantom section: Left Section

DASY4 Configuration:

- Probe: ET3DV6 - SN1782; ConvF(4.36, 4.36, 4.36); Calibrated: 2004-04-28
- Sensor-Surface: 4mm (Mechanical And Optical Surface Detection)
- Electronics: DAE3 Sn567; Calibrated: 2005-09-21
- Phantom: SAM MIC #2000-93 with CRP; Type: SAM MIC #2000-93; Serial: TP-1299
- Measurement SW: DASY4, V4.5 Build 19; Postprocessing SW: SEMCAD, V1.8 Build 146

Left_Contact_Mid_11Mbps/Area Scan (61x61x1): Measurement grid: dx=15mm, dy=15mm
Maximum value of SAR (interpolated) = 1.56 mW/g

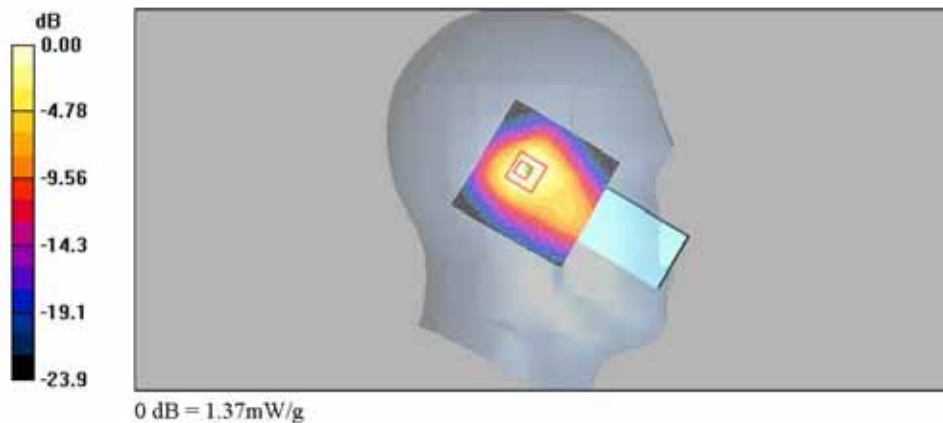
Left_Contact_Mid_11Mbps/Zoom Scan (7x7x7)/Cube 0: Measurement grid: dx=5mm, dy=5mm, dz=5mm

Reference Value = 28.3 V/m; Power Drift = 0.128 dB

Peak SAR (extrapolated) = 2.59 W/kg

SAR(1 g) = 1.25 mW/g; SAR(10 g) = 0.612 mW/g

Maximum value of SAR (measured) = 1.37 mW/g



Date/Time: 2006-03-08 7:18:58

Test Laboratory: SGS Testing Korea

Left_Contact_High_11M

DUT: SMT-W6100; Type: Bar; Serial: S63A169333

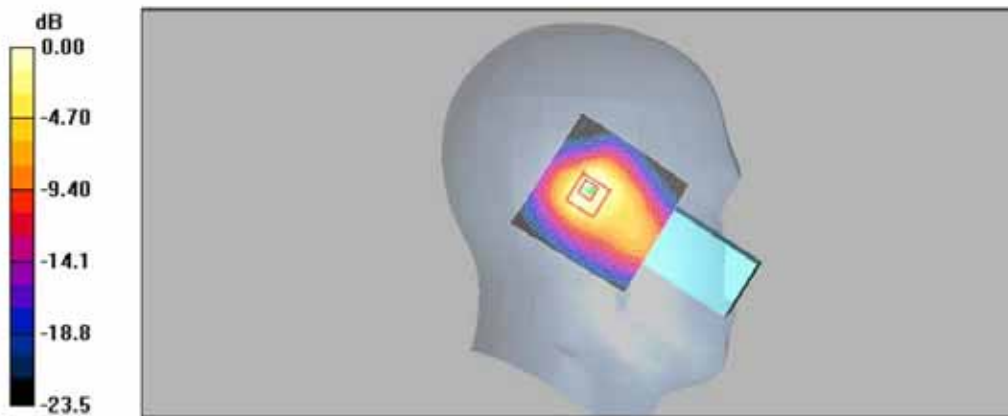
Communication System: WLAN; Frequency: 2462 MHz; Duty Cycle: 1:1
 Medium: HSL 2450MHz Medium parameters used: $f = 2462 \text{ MHz}$; $\sigma = 1.92 \text{ mho/m}$; $\epsilon_r = 38.1$; $\rho = 1000 \text{ kg/m}^3$
 Phantom section: Left Section

DASY4 Configuration:

- Probe: ET3DV6 - SN1782; ConvF(4.36, 4.36, 4.36); Calibrated: 2004-04-28
- Sensor-Surface: 4mm (Mechanical And Optical Surface Detection)
- Electronics: DAE3 Sn567; Calibrated: 2005-09-21
- Phantom: SAM MIC #2000-93 with CRP; Type: SAM MIC #2000-93; Serial: TP-1299
- Measurement SW: DASY4, V4.5 Build 19; Postprocessing SW: SEMCAD, V1.8 Build 146

Left_Contact_High_11Mbps/Area Scan (61x61x1): Measurement grid: $dx=15\text{mm}$, $dy=15\text{mm}$
 Maximum value of SAR (interpolated) = 1.41 mW/g

Left_Contact_High_11Mbps/Zoom Scan (7x7x7)/Cube 0: Measurement grid: $dx=5\text{mm}$, $dy=5\text{mm}$, $dz=5\text{mm}$
 Reference Value = 27.5 V/m; Power Drift = -0.034 dB
 Peak SAR (extrapolated) = 2.36 W/kg
 SAR(1 g) = 1.09 mW/g; SAR(10 g) = 0.531 mW/g
 Maximum value of SAR (measured) = 1.27 mW/g



Date/Time: 2006-03-08 4:13:43

Test Laboratory: SGS Testing Korea

Left_Contact_Mid_54M

DUT: SMT-W6100; Type: Bar; Serial: S63A169333

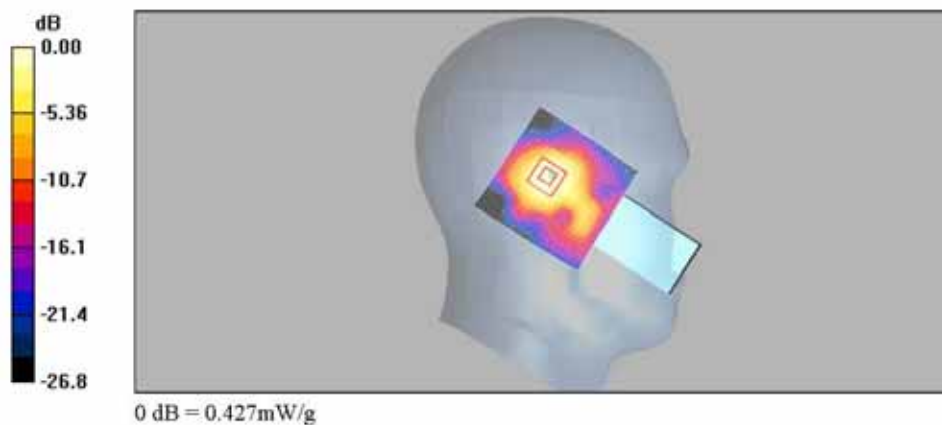
Communication System: WLAN; Frequency: 2437 MHz; Duty Cycle: 1:1
Medium: HSL 2450MHz Medium parameters used: $f = 2437$ MHz; $\sigma = 1.89$ mho/m; $\epsilon_r = 38.2$; $\rho = 1000$ kg/m³
Phantom section: Left Section

DASY4 Configuration:

- Probe: ET3DV6 - SN1782; ConvF(4.36, 4.36, 4.36); Calibrated: 2004-04-28
- Sensor-Surface: 4mm (Mechanical And Optical Surface Detection)
- Electronics: DAE3 Sn567; Calibrated: 2005-09-21
- Phantom: SAM MIC #2000-93 with CRP; Type: SAM MIC #2000-93; Serial: TP-1299
- Measurement SW: DASY4, V4.5 Build 19; Postprocessing SW: SEMCAD, V1.8 Build 146

Left_Contact_Mid_54Mbps/Area Scan (61x61x1): Measurement grid: dx=15mm, dy=15mm
Maximum value of SAR (interpolated) = 0.560 mW/g

Left_Contact_Mid_54Mbps/Zoom Scan (7x7x7)/Cube 0: Measurement grid: dx=5mm, dy=5mm, dz=5mm
Reference Value = 10.7 V/m; Power Drift = 0.135 dB
Peak SAR (extrapolated) = 0.988 W/kg
SAR(1 g) = 0.329 mW/g; SAR(10 g) = 0.147 mW/g
Maximum value of SAR (measured) = 0.427 mW/g



Date/Time: 2006-03-27 5:13:01

Test Laboratory: SGS Testing Korea

Left_Tilt_Low_11M

DUT: SMT-W6100; Type: Bar; Serial: S63A169333

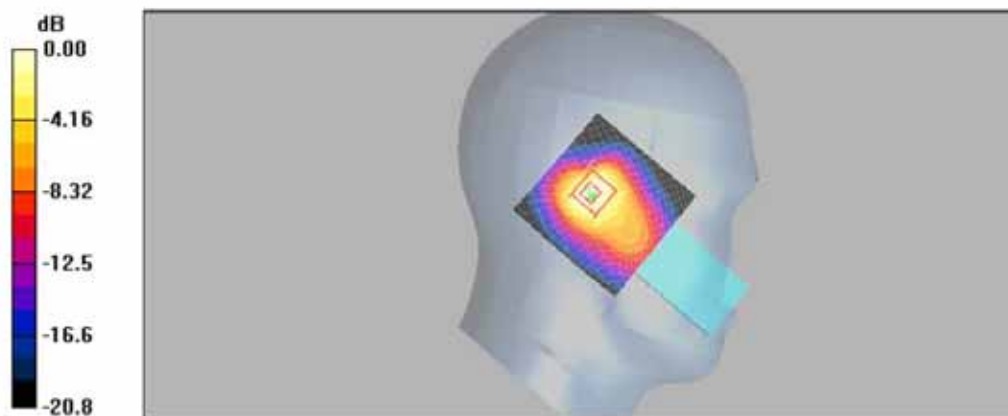
Communication System: WLAN; Frequency: 2412 MHz; Duty Cycle: 1:1
 Medium: HSL 2450MHz Medium parameters used: $f = 2412 \text{ MHz}$; $\sigma = 1.88 \text{ mho/m}$; $\epsilon_r = 39.5$; $\rho = 1000 \text{ kg/m}^3$
 Phantom section: Left Section

DASY4 Configuration:

- Probe: ET3DV6 - SN1782; ConvF(4.36, 4.36, 4.36); Calibrated: 2004-04-28
- Sensor-Surface: 4mm (Mechanical And Optical Surface Detection)
- Electronics: DAE3 Sn567; Calibrated: 2005-09-21
- Phantom: SAM MIC #2000-93 with CRP; Type: SAM MIC #2000-93; Serial: TP-1299
- Measurement SW: DASY4, V4.5 Build 19; Postprocessing SW: SEMCAD, V1.8 Build 146

Left_Tilt_Low_11Mbps/Area Scan (61x61x1): Measurement grid: $dx=15\text{mm}$, $dy=15\text{mm}$
 Maximum value of SAR (interpolated) = 1.56 mW/g

Left_Tilt_Low_11Mbps/Zoom Scan (7x7x7)/Cube 0: Measurement grid: $dx=5\text{mm}$, $dy=5\text{mm}$, $dz=5\text{mm}$
 Reference Value = 29.1 V/m; Power Drift = -0.141 dB
 Peak SAR (extrapolated) = 2.54 W/kg
SAR(1 g) = 1.25 mW/g; SAR(10 g) = 0.614 mW/g
 Maximum value of SAR (measured) = 1.36 mW/g



0 dB = 1.36mW/g

Date/Time: 2006-03-08 5:41:10

Test Laboratory: SGS Testing Korea

Left_Tilt_Mid_11M

DUT: SMT-W6100; Type: Bar; Serial: S63A169333

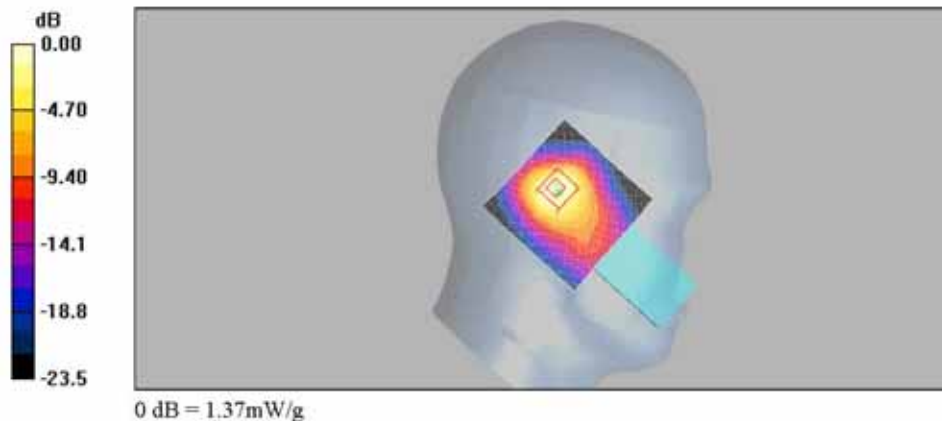
Communication System: WLAN; Frequency: 2437 MHz; Duty Cycle: 1:1
Medium: HSL 2450MHz Medium parameters used: $f = 2437$ MHz; $\sigma = 1.89$ mho/m; $\epsilon_r = 38.2$; $\rho = 1000$ kg/m³
Phantom section: Left Section

DASY4 Configuration:

- Probe: ET3DV6 - SN1782; ConvF(4.36, 4.36, 4.36); Calibrated: 2004-04-28
- Sensor-Surface: 4mm (Mechanical And Optical Surface Detection)
- Electronics: DAE3 Sn567; Calibrated: 2005-09-21
- Phantom: SAM MIC #2000-93 with CRP; Type: SAM MIC #2000-93; Serial: TP-1299
- Measurement SW: DASY4, V4.5 Build 19; Postprocessing SW: SEMCAD, V1.8 Build 146

Left_Tilt_Mid_11Mbps/Area Scan (61x61x1): Measurement grid: dx=15mm, dy=15mm
Maximum value of SAR (interpolated) = 1.40 mW/g

Left_Tilt_Mid_11Mbps/Zoom Scan (7x7x7)/Cube 0: Measurement grid: dx=5mm, dy=5mm, dz=5mm
Reference Value = 28.7 V/m; Power Drift = 0.016 dB
Peak SAR (extrapolated) = 2.81 W/kg
SAR(1 g) = 1.23 mW/g; SAR(10 g) = 0.574 mW/g
Maximum value of SAR (measured) = 1.37 mW/g



Date/Time: 2006-03-27 5:40:59

Test Laboratory: SGS Testing Korea

Left_Tilt_High_11M

DUT: SMT-W6100; Type: Bar; Serial: S63A169333

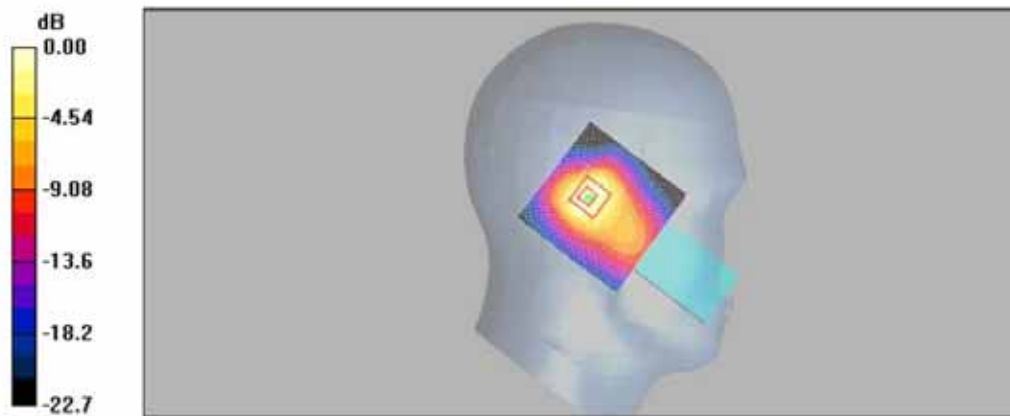
Communication System: WLAN; Frequency: 2462 MHz; Duty Cycle: 1:1
 Medium: HSL 2450MHz Medium parameters used: $f = 2462 \text{ MHz}$; $\sigma = 1.95 \text{ mho/m}$; $\epsilon_r = 39.3$; $\rho = 1000 \text{ kg/m}^3$
 Phantom section: Left Section

DASY4 Configuration:

- Probe: ET3DV6 - SN1782; ConvF(4.36, 4.36, 4.36); Calibrated: 2004-04-28
- Sensor-Surface: 4mm (Mechanical And Optical Surface Detection)
- Electronics: DAE3 Sn567; Calibrated: 2005-09-21
- Phantom: SAM MIC #2000-93 with CRP; Type: SAM MIC #2000-93; Serial: TP-1299
- Measurement SW: DASY4, V4.5 Build 19; Postprocessing SW: SEMCAD, V1.8 Build 146

Left_Tilt_High_11Mbps/Area Scan (61x61x1): Measurement grid: $dx=15\text{mm}$, $dy=15\text{mm}$
 Maximum value of SAR (interpolated) = 1.29 mW/g

Left_Tilt_High_11Mbps/Zoom Scan (7x7x7)/Cube 0: Measurement grid: $dx=5\text{mm}$, $dy=5\text{mm}$, $dz=5\text{mm}$
 Reference Value = 26.6 V/m; Power Drift = -0.080 dB
 Peak SAR (extrapolated) = 2.18 W/kg
 SAR(1 g) = 1.06 mW/g; SAR(10 g) = 0.503 mW/g
 Maximum value of SAR (measured) = 1.19 mW/g



0 dB = 1.19mW/g

Date/Time: 2006-03-08 5:08:22

Test Laboratory: SGS Testing Korea

Left_Tilt_Mid_54M

DUT: SMT-W6100; Type: Bar; Serial: S63A169333

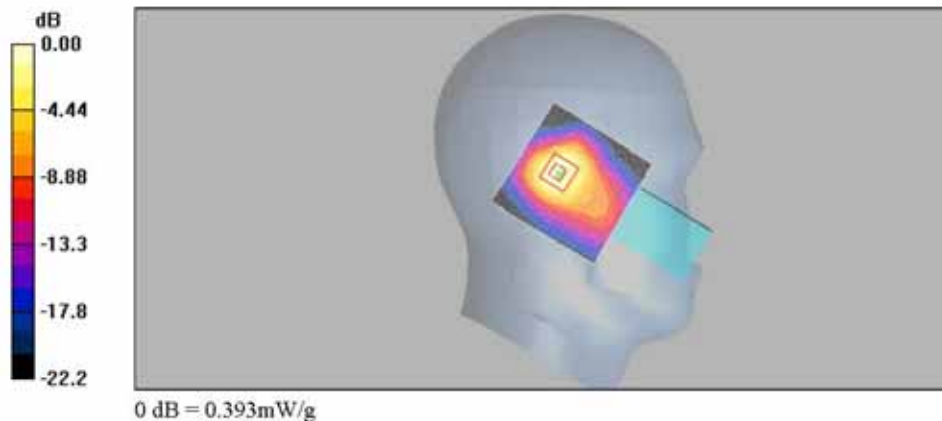
Communication System: WLAN; Frequency: 2437 MHz; Duty Cycle: 1:1
 Medium: HSL 2450MHz Medium parameters used: $f = 2437 \text{ MHz}$; $\sigma = 1.89 \text{ mho/m}$; $\epsilon_r = 38.2$; $\rho = 1000 \text{ kg/m}^3$
 Phantom section: Left Section

DASY4 Configuration:

- Probe: ET3DV6 - SN1782; ConvF(4.36, 4.36, 4.36); Calibrated: 2004-04-28
- Sensor-Surface: 4mm (Mechanical And Optical Surface Detection)
- Electronics: DAE3 Sn567; Calibrated: 2005-09-21
- Phantom: SAM MIC #2000-93 with CRP; Type: SAM MIC #2000-93; Serial: TP-1299
- Measurement SW: DASY4, V4.5 Build 19; Postprocessing SW: SEMCAD, V1.8 Build 146

Left_Tilt_Mid_54Mbps/Area Scan (61x61x1): Measurement grid: $dx=15\text{mm}$, $dy=15\text{mm}$
 Maximum value of SAR (interpolated) = 0.414 mW/g

Left_Tilt_Mid_54Mbps/Zoom Scan (7x7x7)/Cube 0: Measurement grid: $dx=5\text{mm}$, $dy=5\text{mm}$, $dz=5\text{mm}$
 Reference Value = 15.6 V/m; Power Drift = -0.023 dB
 Peak SAR (extrapolated) = 0.708 W/kg
 SAR(1 g) = 0.360 mW/g; SAR(10 g) = 0.175 mW/g
 Maximum value of SAR (measured) = 0.393 mW/g



Date/Time: 2006-03-27 6:19:06

Test Laboratory: SGS Testing Korea

Right_Contact_Low_11M

DUT: SMT-W6100; Type: Bar; Serial: S63A169333

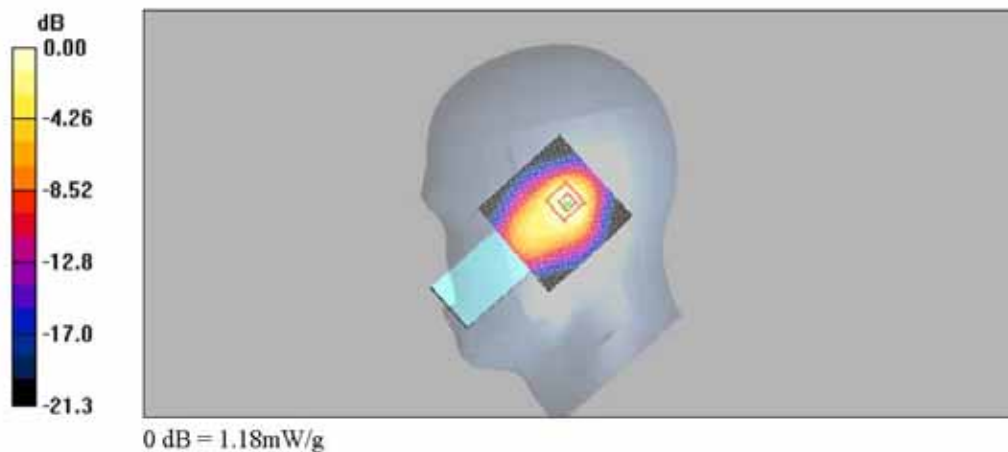
Communication System: WLAN; Frequency: 2412 MHz; Duty Cycle: 1:1
 Medium: HSL 2450MHz Medium parameters used: $f = 2412$ MHz; $\sigma = 1.88$ mho/m; $\epsilon_r = 39.5$; $\rho = 1000$ kg/m³
 Phantom section: Right Section

DASY4 Configuration:

- Probe: ET3DV6 - SN1782; ConvF(4.36, 4.36, 4.36); Calibrated: 2004-04-28
- Sensor-Surface: 4mm (Mechanical And Optical Surface Detection)
- Electronics: DAE3 Sn567; Calibrated: 2005-09-21
- Phantom: SAM MIC #2000-93 with CRP; Type: SAM MIC #2000-93; Serial: TP-1299
- Measurement SW: DASY4, V4.5 Build 19; Postprocessing SW: SEMCAD, V1.8 Build 146

Right_Contact_Low_11Mbps/Area Scan (61x61x1): Measurement grid: dx=15mm, dy=15mm
 Maximum value of SAR (interpolated) = 1.39 mW/g

Right_Contact_Low_11Mbps/Zoom Scan (7x7x7)/Cube 0: Measurement grid: dx=5mm, dy=5mm, dz=5mm
 Reference Value = 27.0 V/m; Power Drift = 0.017 dB
 Peak SAR (extrapolated) = 2.26 W/kg
 SAR(1 g) = 1.09 mW/g; SAR(10 g) = 0.544 mW/g
 Maximum value of SAR (measured) = 1.18 mW/g



Date/Time: 2006-03-08 1:43:11

Test Laboratory: SGS Testing Korea

Right_Contact_Mid_11M

DUT: SMT-W6100; Type: Bar; Serial: S63A169333

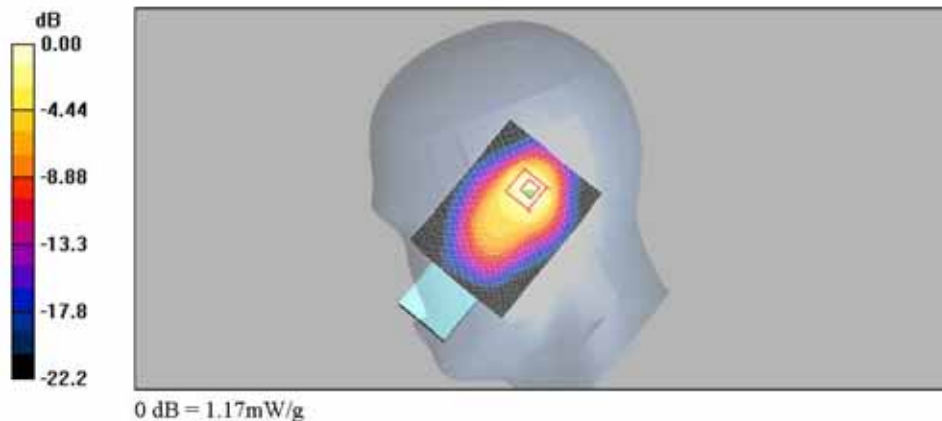
Communication System: WLAN; Frequency: 2437 MHz; Duty Cycle: 1:1
 Medium: HSL 2450MHz Medium parameters used: $f = 2437 \text{ MHz}$; $\sigma = 1.89 \text{ mho/m}$; $\epsilon_r = 38.2$; $\rho = 1000 \text{ kg/m}^3$
 Phantom section: Right Section

DASY4 Configuration:

- Probe: ET3DV6 - SN1782; ConvF(4.36, 4.36, 4.36); Calibrated: 2004-04-28
- Sensor-Surface: 4mm (Mechanical And Optical Surface Detection)
- Electronics: DAE3 Sn567; Calibrated: 2005-09-21
- Phantom: SAM MIC #2000-93 with CRP; Type: SAM MIC #2000-93; Serial: TP-1299
- Measurement SW: DASY4, V4.5 Build 19; Postprocessing SW: SEMCAD, V1.8 Build 146

Right_Contact_Mid_11Mbps/Area Scan (61x81x1): Measurement grid: $dx=15\text{mm}$, $dy=15\text{mm}$
 Maximum value of SAR (interpolated) = 1.30 mW/g

Right_Contact_Mid_11Mbps/Zoom Scan (7x7x7)/Cube 0: Measurement grid: $dx=5\text{mm}$, $dy=5\text{mm}$, $dz=5\text{mm}$
 Reference Value = 27.3 V/m; Power Drift = -0.178 dB
 Peak SAR (extrapolated) = 2.11 W/kg
 SAR(1 g) = 1.06 mW/g; SAR(10 g) = 0.528 mW/g
 Maximum value of SAR (measured) = 1.17 mW/g



Date/Time: 2006-03-27 6:47:56

Test Laboratory: SGS Testing Korea

Right_Contact_High_11M

DUT: SMT-W6100; Type: Bar; Serial: S63A169333

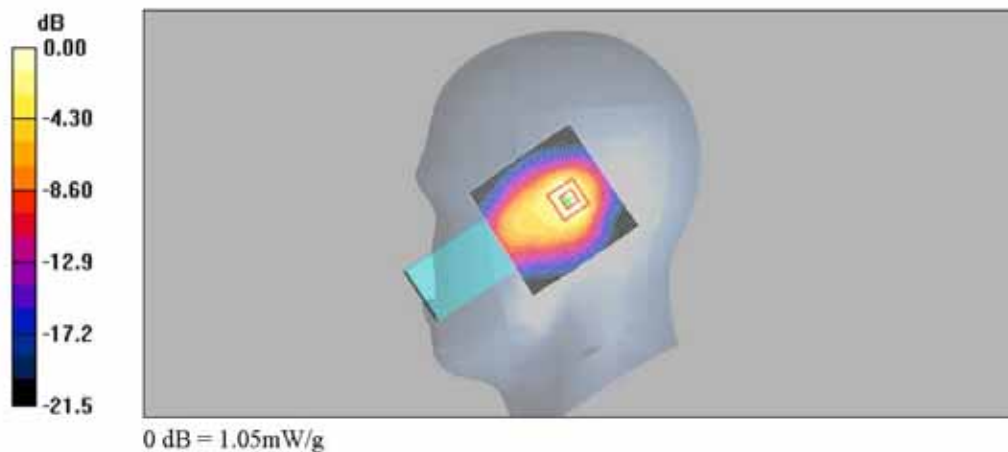
Communication System: WLAN; Frequency: 2462 MHz; Duty Cycle: 1:1
 Medium: HSL 2450MHz Medium parameters used: $f = 2462 \text{ MHz}$; $\sigma = 1.95 \text{ mho/m}$; $\epsilon_r = 39.3$; $\rho = 1000 \text{ kg/m}^3$
 Phantom section: Right Section

DASY4 Configuration:

- Probe: ET3DV6 - SN1782; ConvF(4.36, 4.36, 4.36); Calibrated: 2004-04-28
- Sensor-Surface: 4mm (Mechanical And Optical Surface Detection)
- Electronics: DAE3 Sn567; Calibrated: 2005-09-21
- Phantom: SAM MIC #2000-93 with CRP; Type: SAM MIC #2000-93; Serial: TP-1299
- Measurement SW: DASY4, V4.5 Build 19; Postprocessing SW: SEMCAD, V1.8 Build 146

Right_Contact_High_11Mbps/Area Scan (61x61x1): Measurement grid: $dx=15\text{mm}$, $dy=15\text{mm}$
 Maximum value of SAR (interpolated) = 1.07 mW/g

Right_Contact_High_11Mbps/Zoom Scan (7x7x7)/Cube 0: Measurement grid: $dx=5\text{mm}$, $dy=5\text{mm}$, $dz=5\text{mm}$
 Reference Value = 24.4 V/m; Power Drift = 0.108 dB
 Peak SAR (extrapolated) = 2.05 W/kg
 SAR(1 g) = 0.949 mW/g; SAR(10 g) = 0.454 mW/g
 Maximum value of SAR (measured) = 1.05 mW/g



Date/Time: 2006-03-08 3:11:20

Test Laboratory: SGS Testing Korea

Right_Contact_Mid_54M

DUT: SMT-W6100; Type: Bar; Serial: S63A169333

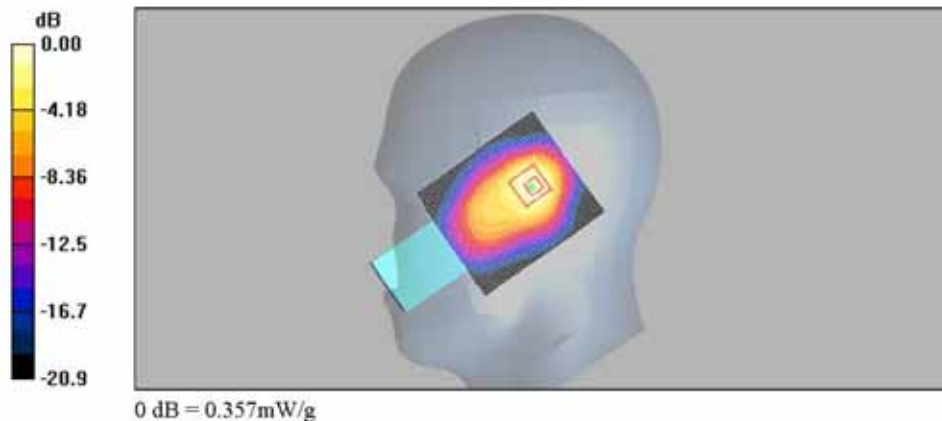
Communication System: WLAN; Frequency: 2437 MHz; Duty Cycle: 1:1
 Medium: HSL 2450MHz Medium parameters used: $f = 2437 \text{ MHz}$; $\sigma = 1.89 \text{ mho/m}$; $\epsilon_r = 38.2$; $\rho = 1000 \text{ kg/m}^3$
 Phantom section: Right Section

DASY4 Configuration:

- Probe: ET3DV6 - SN1782; ConvF(4.36, 4.36, 4.36); Calibrated: 2004-04-28
- Sensor-Surface: 4mm (Mechanical And Optical Surface Detection)
- Electronics: DAE3 Sn567; Calibrated: 2005-09-21
- Phantom: SAM MIC #2000-93 with CRP; Type: SAM MIC #2000-93; Serial: TP-1299
- Measurement SW: DASY4, V4.5 Build 19; Postprocessing SW: SEMCAD, V1.8 Build 146

Right_Contact_Mid_54Mbps/Area Scan (61x71x1): Measurement grid: $dx=15\text{mm}$, $dy=15\text{mm}$
 Maximum value of SAR (interpolated) = 0.380 mW/g

Right_Contact_Mid_54Mbps/Zoom Scan (7x7x7)/Cube 0: Measurement grid: $dx=5\text{mm}$, $dy=5\text{mm}$, $dz=5\text{mm}$
 Reference Value = 14.8 V/m; Power Drift = 0.079 dB
 Peak SAR (extrapolated) = 0.640 W/kg
 SAR(1 g) = 0.325 mW/g; SAR(10 g) = 0.161 mW/g
 Maximum value of SAR (measured) = 0.357 mW/g



Date/Time: 2006-03-27 7:36:13

Test Laboratory: SGS Testing Korea

Right_Tilt_Low_11M

DUT: SMT-W6100; Type: Bar; Serial: S63A169333

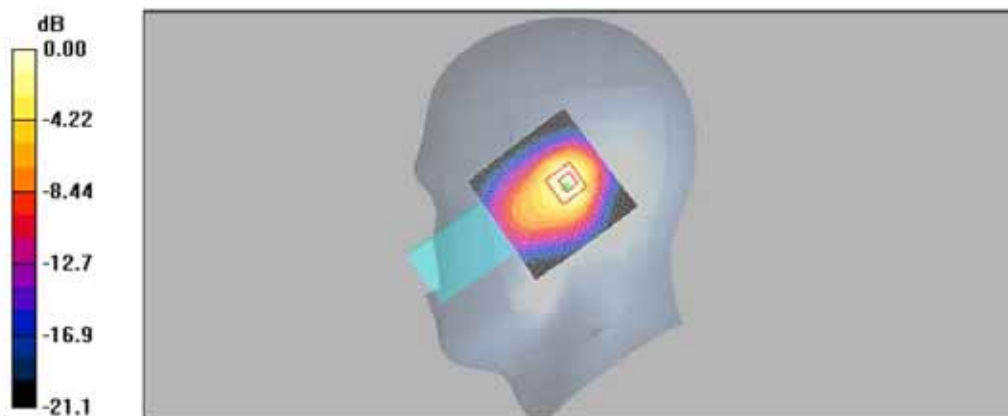
Communication System: WLAN; Frequency: 2412 MHz; Duty Cycle: 1:1
 Medium: HSL 2450MHz Medium parameters used: $f = 2412$ MHz; $\sigma = 1.88$ mho/m; $\epsilon_r = 39.5$; $\rho = 1000$ kg/m³
 Phantom section: Right Section

DASY4 Configuration:

- Probe: ET3DV6 - SN1782; ConvF(4.36, 4.36, 4.36); Calibrated: 2004-04-28
- Sensor-Surface: 4mm (Mechanical And Optical Surface Detection)
- Electronics: DAE3 Sn567; Calibrated: 2005-09-21
- Phantom: SAM MIC #2000-93 with CRP; Type: SAM MIC #2000-93; Serial: TP-1299
- Measurement SW: DASY4, V4.5 Build 19; Postprocessing SW: SEMCAD, V1.8 Build 146

Right_Tilt_Low_11Mbps/Area Scan (61x61x1): Measurement grid: dx=15mm, dy=15mm
 Maximum value of SAR (interpolated) = 1.22 mW/g

Right_Tilt_Low_11Mbps/Zoom Scan (7x7x7)/Cube 0: Measurement grid: dx=5mm, dy=5mm, dz=5mm
 Reference Value = 26.8 V/m; Power Drift = -0.055 dB
 Peak SAR (extrapolated) = 2.02 W/kg
 SAR(1 g) = 1.03 mW/g; SAR(10 g) = 0.509 mW/g
 Maximum value of SAR (measured) = 1.14 mW/g



0 dB = 1.14mW/g

Date/Time: 2006-03-08 2:11:22

Test Laboratory: SGS Testing Korea

Right_Tilt_Mid_11M

DUT: SMT-W6100; Type: Bar; Serial: S63A169333

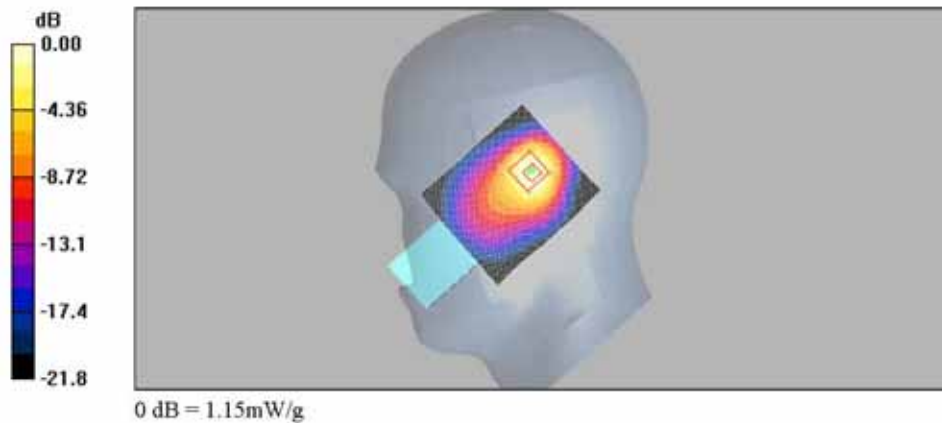
Communication System: WLAN; Frequency: 2437 MHz; Duty Cycle: 1:1
Medium: HSL 2450MHz Medium parameters used: $f = 2437$ MHz; $\sigma = 1.89$ mho/m; $\epsilon_r = 38.2$; $\rho = 1000$ kg/m³
Phantom section: Right Section

DASY4 Configuration:

- Probe: ET3DV6 - SN1782; ConvF(4.36, 4.36, 4.36); Calibrated: 2004-04-28
- Sensor-Surface: 4mm (Mechanical And Optical Surface Detection)
- Electronics: DAE3 Sn567; Calibrated: 2005-09-21
- Phantom: SAM MIC #2000-93 with CRP; Type: SAM MIC #2000-93; Serial: TP-1299
- Measurement SW: DASY4, V4.5 Build 19; Postprocessing SW: SEMCAD, V1.8 Build 146

Right_Tilt_Mid_11Mbps/Area Scan (61x71x1): Measurement grid: dx=15mm, dy=15mm
Maximum value of SAR (interpolated) = 1.20 mW/g

Right_Tilt_Mid_11Mbps/Zoom Scan (7x7x7)/Cube 0: Measurement grid: dx=5mm, dy=5mm, dz=5mm
Reference Value = 26.5 V/m; Power Drift = -0.160 dB
Peak SAR (extrapolated) = 2.33 W/kg
SAR(1 g) = 1.05 mW/g; SAR(10 g) = 0.508 mW/g
Maximum value of SAR (measured) = 1.15 mW/g



Date/Time: 2006-03-27 7:14:14

Test Laboratory: SGS Testing Korea

Right_Tilt_High_11M

DUT: SMT-W6100; Type: Bar; Serial: S63A169333

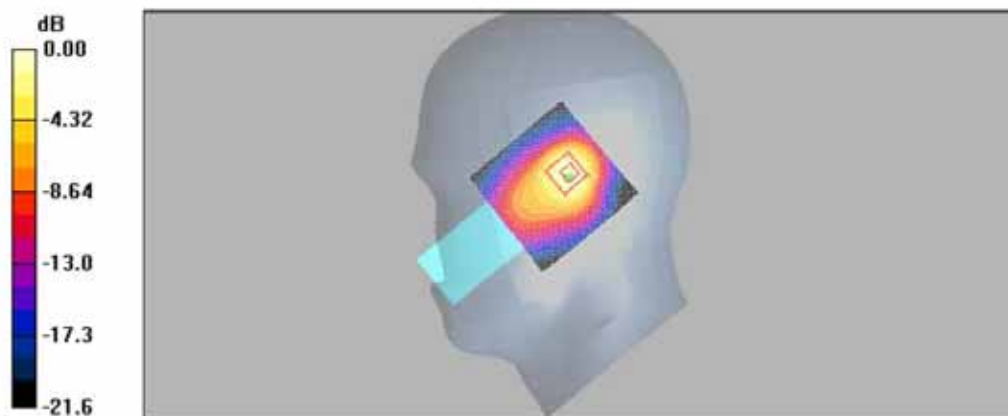
Communication System: WLAN; Frequency: 2462 MHz; Duty Cycle: 1:1
 Medium: HSL 2450MHz Medium parameters used: $f = 2462 \text{ MHz}$; $\sigma = 1.95 \text{ mho/m}$; $\epsilon_r = 39.3$; $\rho = 1000 \text{ kg/m}^3$
 Phantom section: Right Section

DASY4 Configuration:

- Probe: ET3DV6 - SN1782; ConvF(4.36, 4.36, 4.36); Calibrated: 2004-04-28
- Sensor-Surface: 4mm (Mechanical And Optical Surface Detection)
- Electronics: DAE3 Sn567; Calibrated: 2005-09-21
- Phantom: SAM MIC #2000-93 with CRP; Type: SAM MIC #2000-93; Serial: TP-1299
- Measurement SW: DASY4, V4.5 Build 19; Postprocessing SW: SEMCAD, V1.8 Build 146

Right_Tilt_High_11Mbps/Area Scan (61x61x1): Measurement grid: $dx=15\text{mm}$, $dy=15\text{mm}$
 Maximum value of SAR (interpolated) = 1.01 mW/g

Right_Tilt_High_11Mbps/Zoom Scan (7x7x7)/Cube 0: Measurement grid: $dx=5\text{mm}$, $dy=5\text{mm}$, $dz=5\text{mm}$
 Reference Value = 23.7 V/m; Power Drift = -0.036 dB
 Peak SAR (extrapolated) = 1.96 W/kg
 SAR(1 g) = 0.884 mW/g; SAR(10 g) = 0.422 mW/g
 Maximum value of SAR (measured) = 0.939 mW/g



0 dB = 0.939mW/g

Date/Time: 2006-03-08 2:45:08

Test Laboratory: SGS Testing Korea

Right_Tilt_Mid_54M

DUT: SMT-W6100; Type: Bar; Serial: S63A169333

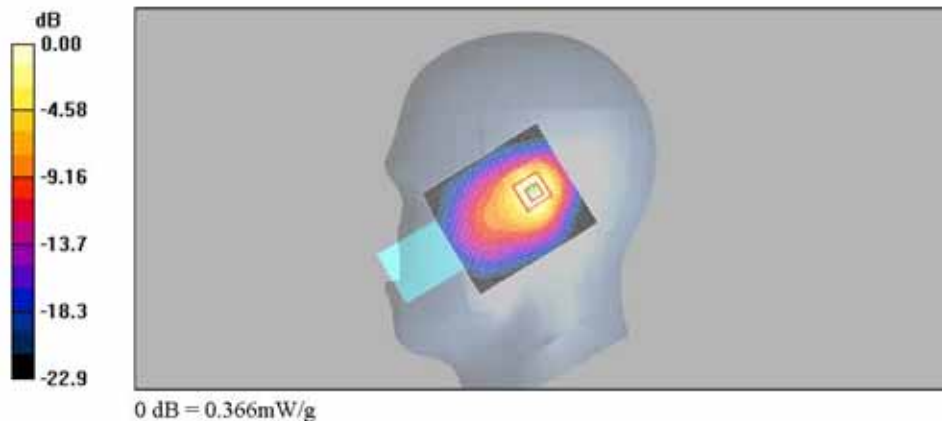
Communication System: WLAN; Frequency: 2437 MHz; Duty Cycle: 1:1
Medium: HSL 2450MHz Medium parameters used: $f = 2437$ MHz; $\sigma = 1.89$ mho/m; $\epsilon_r = 38.2$; $\rho = 1000$ kg/m³
Phantom section: Right Section

DASY4 Configuration:

- Probe: ET3DV6 - SN1782; ConvF(4.36, 4.36, 4.36); Calibrated: 2004-04-28
- Sensor-Surface: 4mm (Mechanical And Optical Surface Detection)
- Electronics: DAE3 Sn567; Calibrated: 2005-09-21
- Phantom: SAM MIC #2000-93 with CRP; Type: SAM MIC #2000-93; Serial: TP-1299
- Measurement SW: DASY4, V4.5 Build 19; Postprocessing SW: SEMCAD, V1.8 Build 146

Right_Tilt_Mid_54Mbps/Area Scan (61x71x1): Measurement grid: dx=15mm, dy=15mm
Maximum value of SAR (interpolated) = 0.345 mW/g

Right_Tilt_Mid_54Mbps/Zoom Scan (7x7x7)/Cube 0: Measurement grid: dx=5mm, dy=5mm, dz=5mm
Reference Value = 14.2 V/m; Power Drift = -0.139 dB
Peak SAR (extrapolated) = 0.707 W/kg
SAR(1 g) = 0.324 mW/g; SAR(10 g) = 0.155 mW/g
Maximum value of SAR (measured) = 0.366 mW/g



Date/Time: 2006-03-09 7:48:30

Test Laboratory: SGS Testing Korea

Body_Front_Low_11Mbps

DUT: SMT-W6100; Type: Bar; Serial: S63A169333

Communication System: WLAN; Frequency: 2412 MHz; Duty Cycle: 1:1

Medium: M2450 Medium parameters used: $f = 2412$ MHz; $\sigma = 1.94$ mho/m; $\epsilon_r = 52.3$; $\rho = 1000$ kg/m³

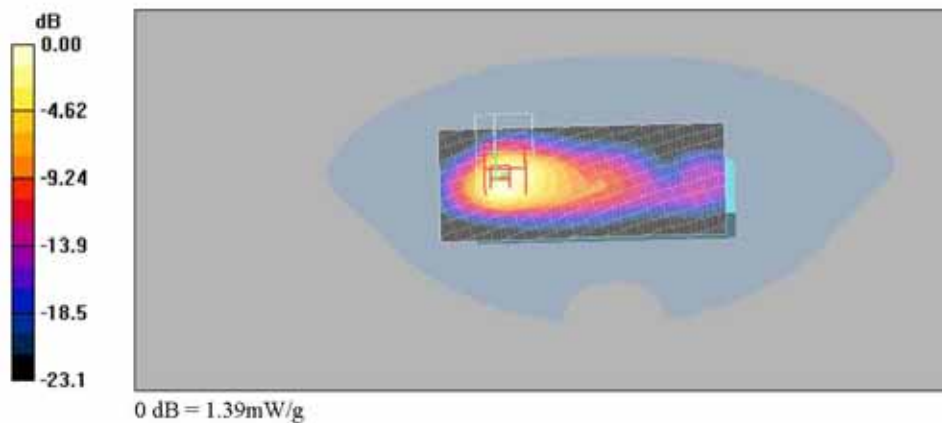
Phantom section: Flat Section

DASY4 Configuration:

- Probe: ET3DV6 - SN1782; ConvF(4.22, 4.22, 4.22); Calibrated: 2004-04-28
- Sensor-Surface: 4mm (Mechanical And Optical Surface Detection)
- Electronics: DAE3 Sn567; Calibrated: 2005-09-21
- Phantom: SAM MIC #2000-93 with CRP; Type: SAM MIC #2000-93; Serial: TP-1299
- Measurement SW: DASY4, V4.5 Build 19; Postprocessing SW: SEMCAD, V1.8 Build 146

Body_Front_Low_11Mbps/Area Scan (61x101x1): Measurement grid: dx=15mm, dy=15mm
 Maximum value of SAR (interpolated) = 1.74 mW/g

Body_Front_Low_11Mbps/Zoom Scan (7x7x7)/Cube 0: Measurement grid: dx=5mm, dy=5mm, dz=5mm
 Reference Value = 9.59 V/m; Power Drift = -0.163 dB
 Peak SAR (extrapolated) = 2.82 W/kg
 SAR(1 g) = 1.27 mW/g; SAR(10 g) = 0.608 mW/g
 Maximum value of SAR (measured) = 1.39 mW/g



Date/Time: 2006-03-09 9:03:24

Test Laboratory: SGS Testing Korea

Body_Front_Low_54Mbps

DUT: SMT-W6100; Type: Bar; Serial: S63A169333

Communication System: WLAN; Frequency: 2412 MHz; Duty Cycle: 1:1

Medium: M2450 Medium parameters used: $f = 2412$ MHz; $\sigma = 1.94$ mho/m; $\epsilon_r = 52.3$; $\rho = 1000$ kg/m³

Phantom section: Flat Section

DASY4 Configuration:

- Probe: ET3DV6 - SN1782; ConvF(4.22, 4.22, 4.22); Calibrated: 2004-04-28
- Sensor-Surface: 4mm (Mechanical And Optical Surface Detection)
- Electronics: DAE3 Sn567; Calibrated: 2005-09-21
- Phantom: SAM MIC #2000-93 with CRP; Type: SAM MIC #2000-93; Serial: TP-1299
- Measurement SW: DASY4, V4.5 Build 19; Postprocessing SW: SEMCAD, V1.8 Build 146

Body_Front_Low_54Mbps/Area Scan (61x101x1): Measurement grid: dx=15mm, dy=15mm
 Maximum value of SAR (interpolated) = 0.461 mW/g

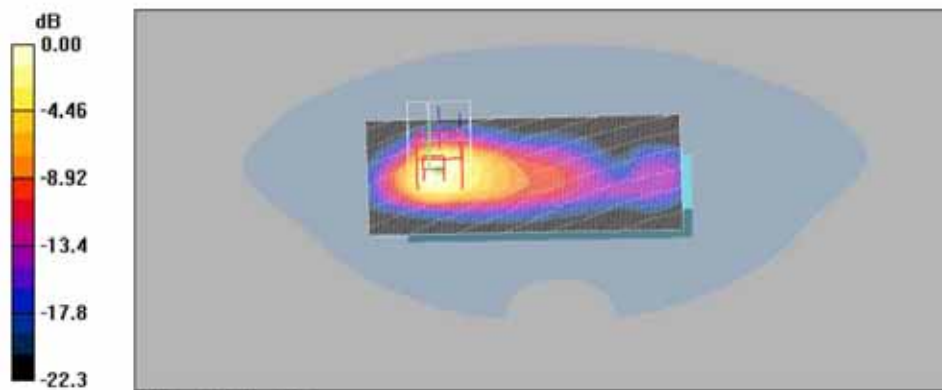
Body_Front_Low_54Mbps/Zoom Scan (7x7x7)/Cube 0: Measurement grid: dx=5mm, dy=5mm, dz=5mm

Reference Value = 4.68 V/m; Power Drift = -0.106 dB

Peak SAR (extrapolated) = 0.749 W/kg

SAR(1 g) = 0.324 mW/g; SAR(10 g) = 0.157 mW/g

Maximum value of SAR (measured) = 0.362 mW/g



0 dB = 0.362mW/g

Date/Time: 2006-03-09 8:13:51

Test Laboratory: SGS Testing Korea

Body_Front_Mid_11Mbps

DUT: SMT-W6100; Type: Bar; Serial: S63A169333

Communication System: WLAN; Frequency: 2437 MHz; Duty Cycle: 1:1

Medium: M2450 Medium parameters used: $f = 2437$ MHz; $\sigma = 1.99$ mho/m; $\epsilon_r = 52.2$; $\rho = 1000$ kg/m³

Phantom section: Flat Section

DASY4 Configuration:

- Probe: ET3DV6 - SN1782; ConvF(4.22, 4.22, 4.22); Calibrated: 2004-04-28
- Sensor-Surface: 4mm (Mechanical And Optical Surface Detection)
- Electronics: DAE3 Sn567; Calibrated: 2005-09-21
- Phantom: SAM MIC #2000-93 with CRP; Type: SAM MIC #2000-93; Serial: TP-1299
- Measurement SW: DASY4, V4.5 Build 19; Postprocessing SW: SEMCAD, V1.8 Build 146

Body_Front_Mid_11Mbps/Area Scan (61x101x1): Measurement grid: dx=15mm, dy=15mm
 Maximum value of SAR (interpolated) = 1.61 mW/g

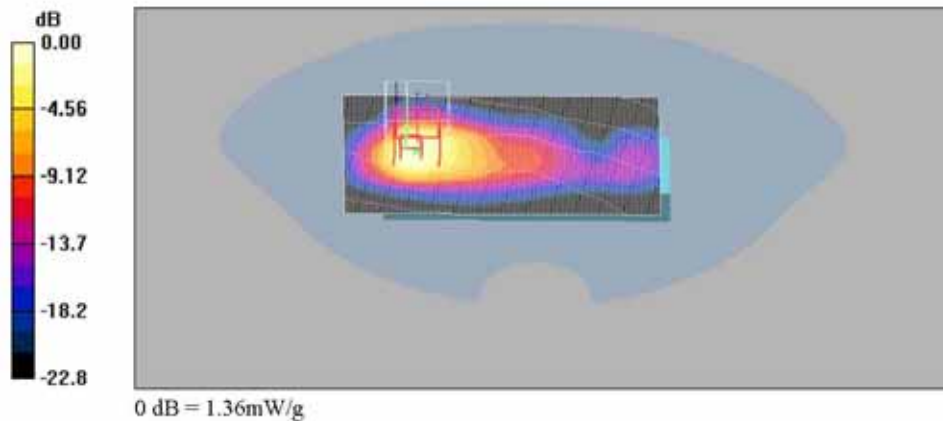
Body_Front_Mid_11Mbps/Zoom Scan (7x7x7)/Cube 0: Measurement grid: dx=5mm, dy=5mm, dz=5mm

Reference Value = 8.61 V/m; Power Drift = 0.035 dB

Peak SAR (extrapolated) = 2.76 W/kg

SAR(1 g) = 1.21 mW/g; SAR(10 g) = 0.575 mW/g

Maximum value of SAR (measured) = 1.36 mW/g



Date/Time: 2006-03-09 8:38:39

Test Laboratory: SGS Testing Korea

Body_Front_Mid_54Mbps

DUT: SMT-W6100; Type: Bar; Serial: S63A169333

Communication System: WLAN; Frequency: 2437 MHz; Duty Cycle: 1:1

Medium: M2450 Medium parameters used: $f = 2437$ MHz; $\sigma = 1.99$ mho/m; $\epsilon_r = 52.2$; $\rho = 1000$ kg/m³

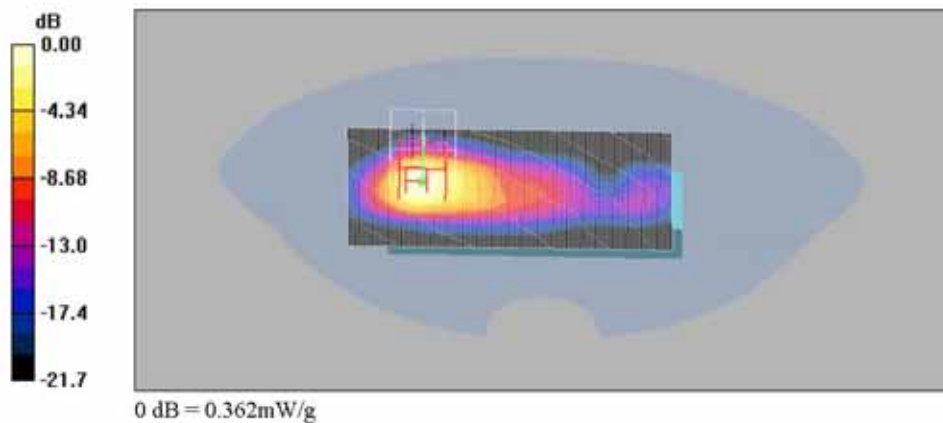
Phantom section: Flat Section

DASY4 Configuration:

- Probe: ET3DV6 - SN1782; ConvF(4.22, 4.22, 4.22); Calibrated: 2004-04-28
- Sensor-Surface: 4mm (Mechanical And Optical Surface Detection)
- Electronics: DAE3 Sn567; Calibrated: 2005-09-21
- Phantom: SAM MIC #2000-93 with CRP; Type: SAM MIC #2000-93; Serial: TP-1299
- Measurement SW: DASY4, V4.5 Build 19; Postprocessing SW: SEMCAD, V1.8 Build 146

Body_Front_Mid_54Mbps/Area Scan (61x101x1): Measurement grid: dx=15mm, dy=15mm
 Maximum value of SAR (interpolated) = 0.430 mW/g

Body_Front_Mid_54Mbps/Zoom Scan (7x7x7)/Cube 0: Measurement grid: dx=5mm, dy=5mm, dz=5mm
 Reference Value = 4.55 V/m; Power Drift = -0.148 dB
 Peak SAR (extrapolated) = 0.773 W/kg
 SAR(1 g) = 0.326 mW/g; SAR(10 g) = 0.156 mW/g
 Maximum value of SAR (measured) = 0.362 mW/g



Date/Time: 2006-03-09 6:15:57

Test Laboratory: SGS Testing Korea

Body_Front_High_11Mbps

DUT: SMT-W6100; Type: Bar; Serial: S63A169333

Communication System: WLAN; Frequency: 2462 MHz; Duty Cycle: 1:1

Medium: M2450 Medium parameters used: $f = 2462$ MHz; $\sigma = 2.02$ mho/m; $\epsilon_r = 52.1$; $\rho = 1000$ kg/m³

Phantom section: Flat Section

DASY4 Configuration:

- Probe: ET3DV6 - SN1782; ConvF(4.22, 4.22, 4.22); Calibrated: 2004-04-28
- Sensor-Surface: 4mm (Mechanical And Optical Surface Detection)
- Electronics: DAE3 Sn567; Calibrated: 2005-09-21
- Phantom: SAM MIC #2000-93 with CRP; Type: SAM MIC #2000-93; Serial: TP-1299
- Measurement SW: DASY4, V4.5 Build 19; Postprocessing SW: SEMCAD, V1.8 Build 146

Body_Front_Mid_11Mbps/Area Scan (61x101x1): Measurement grid: dx=15mm, dy=15mm
 Maximum value of SAR (interpolated) = 1.28 mW/g

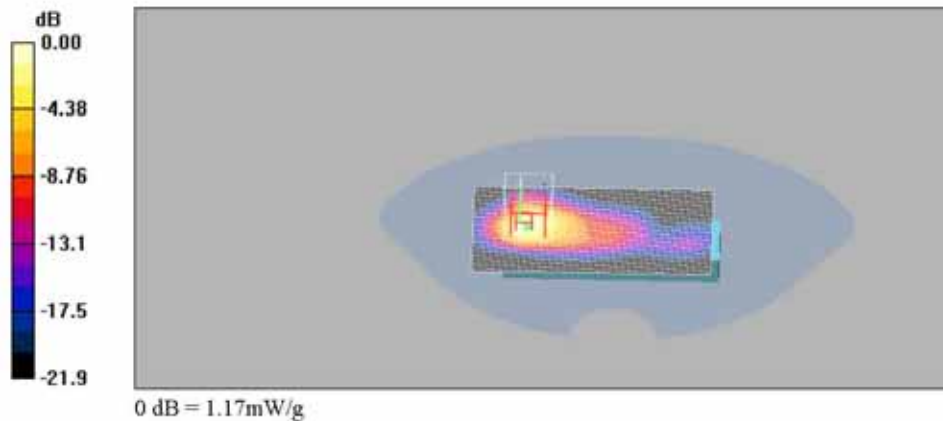
Body_Front_Mid_11Mbps/Zoom Scan (7x7x7)/Cube 0: Measurement grid: dx=5mm, dy=5mm, dz=5mm

Reference Value = 8.13 V/m; Power Drift = 0.066 dB

Peak SAR (extrapolated) = 2.26 W/kg

SAR(1 g) = 1.06 mW/g; SAR(10 g) = 0.500 mW/g

Maximum value of SAR (measured) = 1.17 mW/g



Date/Time: 2006-03-09 9:28:10

Test Laboratory: SGS Testing Korea

Body_Front_High_54Mbps

DUT: SMT-W6100; Type: Bar; Serial: S63A169333

Communication System: WLAN; Frequency: 2462 MHz; Duty Cycle: 1:1

Medium: M2450 Medium parameters used: $f = 2462$ MHz; $\sigma = 2.02$ mho/m; $\epsilon_r = 52.1$; $\rho = 1000$ kg/m³

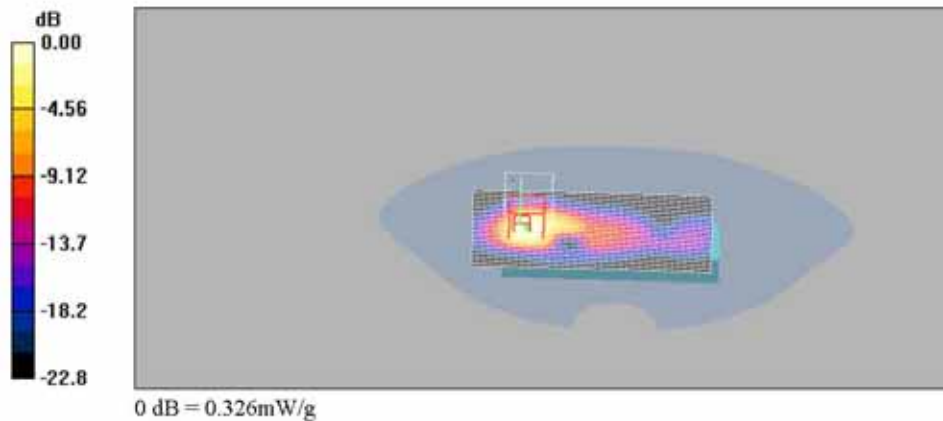
Phantom section: Flat Section

DASY4 Configuration:

- Probe: ET3DV6 - SN1782; ConvF(4.22, 4.22, 4.22); Calibrated: 2004-04-28
- Sensor-Surface: 4mm (Mechanical And Optical Surface Detection)
- Electronics: DAE3 Sn567; Calibrated: 2005-09-21
- Phantom: SAM MIC #2000-93 with CRP; Type: SAM MIC #2000-93; Serial: TP-1299
- Measurement SW: DASY4, V4.5 Build 19; Postprocessing SW: SEMCAD, V1.8 Build 146

Body_Front_Low_54Mbps/Area Scan (61x101x1): Measurement grid: dx=15mm, dy=15mm
 Maximum value of SAR (interpolated) = 0.398 mW/g

Body_Front_Low_54Mbps/Zoom Scan (7x7x7)/Cube 0: Measurement grid: dx=5mm, dy=5mm, dz=5mm
 Reference Value = 4.05 V/m; Power Drift = -0.074 dB
 Peak SAR (extrapolated) = 0.641 W/kg
 SAR(1 g) = 0.285 mW/g; SAR(10 g) = 0.135 mW/g
 Maximum value of SAR (measured) = 0.326 mW/g



Date/Time: 2006-03-09 10:06:11

Test Laboratory: SGS Testing Korea

Body_Rear_Low_11Mbps

DUT: SMT-W6100; Type: Bar; Serial: S63A169333

Communication System: WLAN; Frequency: 2412 MHz; Duty Cycle: 1:1

Medium: M2450 Medium parameters used: $f = 2412$ MHz; $\sigma = 1.94$ mho/m; $\epsilon_r = 52.3$; $\rho = 1000$ kg/m³

Phantom section: Flat Section

DASY4 Configuration:

- Probe: ET3DV6 - SN1782; ConvF(4.22, 4.22, 4.22); Calibrated: 2004-04-28
- Sensor-Surface: 4mm (Mechanical And Optical Surface Detection)
- Electronics: DAE3 Sn567; Calibrated: 2005-09-21
- Phantom: SAM MIC #2000-93 with CRP; Type: SAM MIC #2000-93; Serial: TP-1299
- Measurement SW: DASY4, V4.5 Build 19; Postprocessing SW: SEMCAD, V1.8 Build 146

Body_Rear_Low_11Mbps/Area Scan (61x101x1): Measurement grid: dx=15mm, dy=15mm
 Maximum value of SAR (interpolated) = 0.816 mW/g

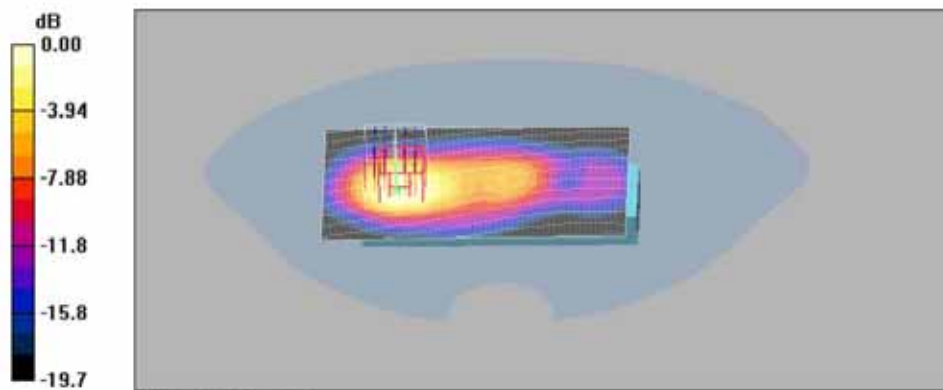
Body_Rear_Low_11Mbps/Zoom Scan (7x7x7)/Cube 0: Measurement grid: dx=5mm, dy=5mm, dz=5mm

Reference Value = 10.00 V/m; Power Drift = 0.133 dB

Peak SAR (extrapolated) = 1.12 W/kg

SAR(1 g) = 0.560 mW/g; SAR(10 g) = 0.308 mW/g

Maximum value of SAR (measured) = 0.593 mW/g



0 dB = 0.593mW/g

Date/Time: 2006-03-09 11:19:21

Test Laboratory: SGS Testing Korea

Body_Rear_Low_54Mbps

DUT: SMT-W6100; Type: Bar; Serial: S63A169333

Communication System: WLAN; Frequency: 2412 MHz; Duty Cycle: 1:1

Medium: M2450 Medium parameters used: $f = 2412$ MHz; $\sigma = 1.94$ mho/m; $\epsilon_r = 52.3$; $\rho = 1000$ kg/m³

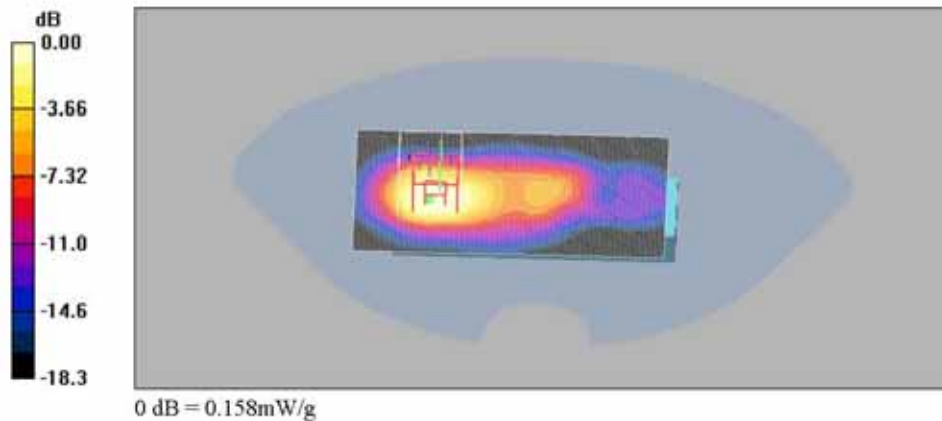
Phantom section: Flat Section

DASY4 Configuration:

- Probe: ET3DV6 - SN1782; ConvF(4.22, 4.22, 4.22); Calibrated: 2004-04-28
- Sensor-Surface: 4mm (Mechanical And Optical Surface Detection)
- Electronics: DAE3 Sn567; Calibrated: 2005-09-21
- Phantom: SAM MIC #2000-93 with CRP; Type: SAM MIC #2000-93; Serial: TP-1299
- Measurement SW: DASY4, V4.5 Build 19; Postprocessing SW: SEMCAD, V1.8 Build 146

Body_Rear_Low_54Mbps/Area Scan (61x101x1): Measurement grid: dx=15mm, dy=15mm
 Maximum value of SAR (interpolated) = 0.226 mW/g

Body_Rear_Low_54Mbps/Zoom Scan (7x7x7)/Cube 0: Measurement grid: dx=5mm, dy=5mm, dz=5mm
 Reference Value = 5.30 V/m; Power Drift = 0.193 dB
 Peak SAR (extrapolated) = 0.286 W/kg
 SAR(1 g) = 0.146 mW/g; SAR(10 g) = 0.081 mW/g
 Maximum value of SAR (measured) = 0.158 mW/g



Date/Time: 2006-03-09 10:30:52

Test Laboratory: SGS Testing Korea

Body_Rear_Mid_11Mbps

DUT: SMT-W6100; Type: Bar; Serial: S63A169333

Communication System: WLAN; Frequency: 2437 MHz; Duty Cycle: 1:1

Medium: M2450 Medium parameters used: $f = 2437$ MHz; $\sigma = 1.99$ mho/m; $\epsilon_r = 52.2$; $\rho = 1000$ kg/m³

Phantom section: Flat Section

DASY4 Configuration:

- Probe: ET3DV6 - SN1782; ConvF(4.22, 4.22, 4.22); Calibrated: 2004-04-28
- Sensor-Surface: 4mm (Mechanical And Optical Surface Detection)
- Electronics: DAE3 Sn567; Calibrated: 2005-09-21
- Phantom: SAM MIC #2000-93 with CRP; Type: SAM MIC #2000-93; Serial: TP-1299
- Measurement SW: DASY4, V4.5 Build 19; Postprocessing SW: SEMCAD, V1.8 Build 146

Body_Rear_Mid_11Mbps/Area Scan (61x101x1): Measurement grid: dx=15mm, dy=15mm
 Maximum value of SAR (interpolated) = 0.796 mW/g

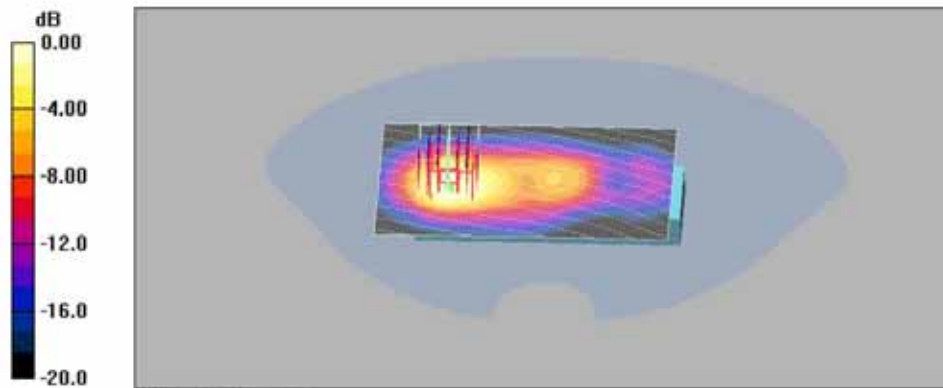
Body_Rear_Mid_11Mbps/Zoom Scan (7x7x7)/Cube 0: Measurement grid: dx=5mm, dy=5mm, dz=5mm

Reference Value = 9.82 V/m; Power Drift = 0.092 dB

Peak SAR (extrapolated) = 1.12 W/kg

SAR(1 g) = 0.539 mW/g; SAR(10 g) = 0.294 mW/g

Maximum value of SAR (measured) = 0.568 mW/g



0 dB = 0.568mW/g

Date/Time: 2006-03-09 11:44:41

Test Laboratory: SGS Testing Korea

Body_Rear_Mid_54Mbps

DUT: SMT-W6100; Type: Bar; Serial: S63A169333

Communication System: WLAN; Frequency: 2437 MHz; Duty Cycle: 1:1

Medium: M2450 Medium parameters used: $f = 2437$ MHz; $\sigma = 1.99$ mho/m; $\epsilon_r = 52.2$; $\rho = 1000$ kg/m³

Phantom section: Flat Section

DASY4 Configuration:

- Probe: ET3DV6 - SN1782; ConvF(4.22, 4.22, 4.22); Calibrated: 2004-04-28
- Sensor-Surface: 4mm (Mechanical And Optical Surface Detection)
- Electronics: DAE3 Sn567; Calibrated: 2005-09-21
- Phantom: SAM MIC #2000-93 with CRP; Type: SAM MIC #2000-93; Serial: TP-1299
- Measurement SW: DASY4, V4.5 Build 19; Postprocessing SW: SEMCAD, V1.8 Build 146

Body_Rear_Mid_54Mbps/Area Scan (61x101x1): Measurement grid: dx=15mm, dy=15mm
 Maximum value of SAR (interpolated) = 0.317 mW/g

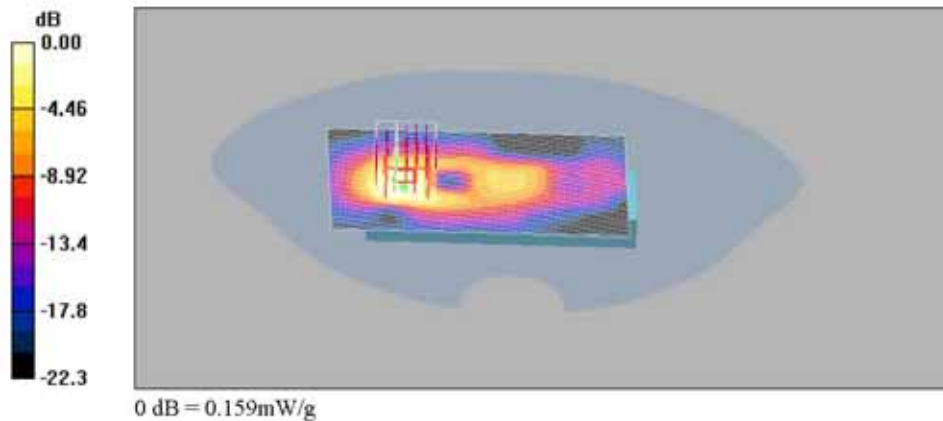
Body_Rear_Mid_54Mbps/Zoom Scan (7x7x7)/Cube 0: Measurement grid: dx=5mm, dy=5mm, dz=5mm

Reference Value = 0.802 V/m; Power Drift = 0.104 dB

Peak SAR (extrapolated) = 0.314 W/kg

SAR(1 g) = 0.151 mW/g; SAR(10 g) = 0.082 mW/g

Maximum value of SAR (measured) = 0.159 mW/g



Date/Time: 2006-03-09 10:55:12

Test Laboratory: SGS Testing Korea

Body_Rear_High_11Mbps

DUT: SMT-W6100; Type: Bar; Serial: S63A169333

Communication System: WLAN; Frequency: 2462 MHz; Duty Cycle: 1:1

Medium: M2450 Medium parameters used: $f = 2462$ MHz; $\sigma = 2.02$ mho/m; $\epsilon_r = 52.1$; $\rho = 1000$ kg/m³

Phantom section: Flat Section

DASY4 Configuration:

- Probe: ET3DV6 - SN1782; ConvF(4.22, 4.22, 4.22); Calibrated: 2004-04-28
- Sensor-Surface: 4mm (Mechanical And Optical Surface Detection)
- Electronics: DAE3 Sn567; Calibrated: 2005-09-21
- Phantom: SAM MIC #2000-93 with CRP; Type: SAM MIC #2000-93; Serial: TP-1299
- Measurement SW: DASY4, V4.5 Build 19; Postprocessing SW: SEMCAD, V1.8 Build 146

Body_Rear_High_11Mbps/Area Scan (61x101x1): Measurement grid: dx=15mm, dy=15mm
 Maximum value of SAR (interpolated) = 0.709 mW/g

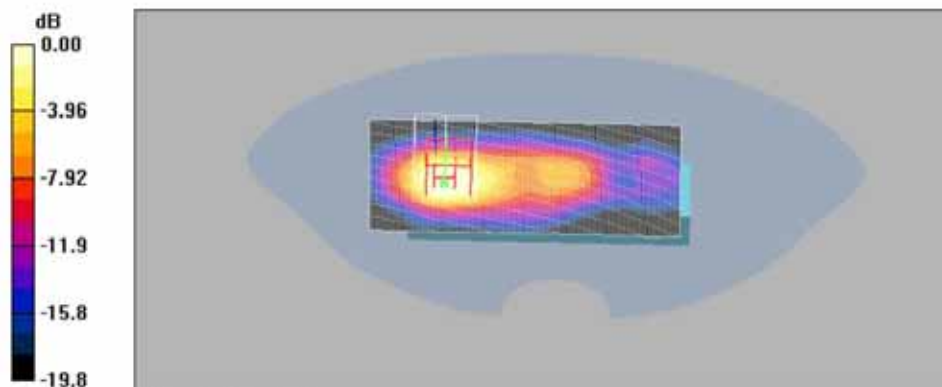
Body_Rear_High_11Mbps/Zoom Scan (7x7x7)/Cube 0: Measurement grid: dx=5mm, dy=5mm, dz=5mm

Reference Value = 8.72 V/m; Power Drift = 0.167 dB

Peak SAR (extrapolated) = 1.00 W/kg

SAR(1 g) = 0.478 mW/g; SAR(10 g) = 0.258 mW/g

Maximum value of SAR (measured) = 0.505 mW/g



0 dB = 0.505mW/g

Date/Time: 2006-03-10 12:27:33

Test Laboratory: SGS Testing Korea

Body_Rear_High_54Mbps

DUT: SMT-W6100; Type: Bar; Serial: S63A169333

Communication System: WLAN; Frequency: 2462 MHz; Duty Cycle: 1:1

Medium: M2450 Medium parameters used: $f = 2462$ MHz; $\sigma = 2.02$ mho/m; $\epsilon_r = 52.1$; $\rho = 1000$ kg/m³

Phantom section: Flat Section

DASY4 Configuration:

- Probe: ET3DV6 - SN1782; ConvF(4.22, 4.22, 4.22); Calibrated: 2004-04-28
- Sensor-Surface: 4mm (Mechanical And Optical Surface Detection)
- Electronics: DAE3 Sn567; Calibrated: 2005-09-21
- Phantom: SAM MIC #2000-93 with CRP; Type: SAM MIC #2000-93; Serial: TP-1299
- Measurement SW: DASY4, V4.5 Build 19; Postprocessing SW: SEMCAD, V1.8 Build 146

Body_Rear_High_54Mbps/Area Scan (61x101x1): Measurement grid: dx=15mm, dy=15mm
 Maximum value of SAR (interpolated) = 0.288 mW/g

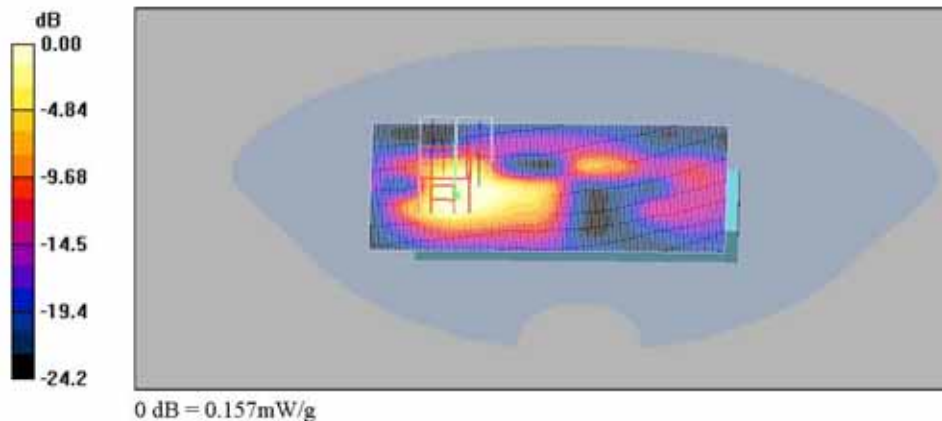
Body_Rear_High_54Mbps/Zoom Scan (7x7x7)/Cube 0: Measurement grid: dx=5mm, dy=5mm, dz=5mm

Reference Value = 4.78 V/m; Power Drift = 0.133 dB

Peak SAR (extrapolated) = 0.794 W/kg

SAR(1 g) = 0.136 mW/g; SAR(10 g) = 0.052 mW/g

Maximum value of SAR (measured) = 0.157 mW/g





Report File No. : STROS-06-008
Date of Issue : 2006-04-03
Page : 57 / 82

Appendix D

Calibration Certificate

- PROBE

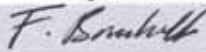

- DAE

- 2450 MHz DIPOLE

- PROBE Calibration Certificate

Calibration Laboratory of
 Schmid & Partner
 Engineering AG
 Zeughausstrasse 43, 8004 Zurich, Switzerland

Client **SGS KES (Dymstec)**

CALIBRATION CERTIFICATE																															
Object(s)	ET3DV6 - SN:1782																														
Calibration procedure(s)	QA CAL-01.v2 Calibration procedure for dosimetric E-field probes																														
Calibration date:	April 28, 2004																														
Condition of the calibrated item	In Tolerance (according to the specific calibration document)																														
<p>This calibration certificate documents the traceability to national standards, which realize the physical units of measurements (SI). The measurements and the uncertainties with confidence probability are given on the following pages and are part of the certificate.</p> <p>All calibrations have been conducted in the closed laboratory facility, environment temperature 22 +/- 2 degrees Celsius and humidity < 75%.</p> <p>Calibration Equipment used (M&TE critical for calibration)</p> <table border="1"> <thead> <tr> <th>Model Type</th> <th>ID #</th> <th>Cal Date (Calibrated by, Certificate No.)</th> <th>Scheduled Calibration</th> </tr> </thead> <tbody> <tr> <td>Power meter EPM E442</td> <td>GB37480704</td> <td>6-Nov-03 (METAS, No. 252-0254)</td> <td>Nov-04</td> </tr> <tr> <td>Power sensor HP 8481A</td> <td>US37292783</td> <td>6-Nov-03 (METAS, No. 252-0254)</td> <td>Nov-04</td> </tr> <tr> <td>Fluke Process Calibrator Type 702</td> <td>SN: 6295803</td> <td>6-Sep-03 (Sintrel SCS No. E-030020)</td> <td>Sep-04</td> </tr> <tr> <td>Power sensor HP 8481A</td> <td>MY41092180</td> <td>18-Sep-02 (SPEAG, in house check Oct-03)</td> <td>In house check: Oct 05</td> </tr> <tr> <td>RF generator HP 8684C</td> <td>US3642U01700</td> <td>4-Aug-99 (SPEAG, in house check Aug-02)</td> <td>In house check: Aug-05</td> </tr> <tr> <td>Network Analyzer HP 8753E</td> <td>US37390585</td> <td>18-Oct-01 (SPEAG, in house check Oct-03)</td> <td>In house check: Oct 05</td> </tr> </tbody> </table>				Model Type	ID #	Cal Date (Calibrated by, Certificate No.)	Scheduled Calibration	Power meter EPM E442	GB37480704	6-Nov-03 (METAS, No. 252-0254)	Nov-04	Power sensor HP 8481A	US37292783	6-Nov-03 (METAS, No. 252-0254)	Nov-04	Fluke Process Calibrator Type 702	SN: 6295803	6-Sep-03 (Sintrel SCS No. E-030020)	Sep-04	Power sensor HP 8481A	MY41092180	18-Sep-02 (SPEAG, in house check Oct-03)	In house check: Oct 05	RF generator HP 8684C	US3642U01700	4-Aug-99 (SPEAG, in house check Aug-02)	In house check: Aug-05	Network Analyzer HP 8753E	US37390585	18-Oct-01 (SPEAG, in house check Oct-03)	In house check: Oct 05
Model Type	ID #	Cal Date (Calibrated by, Certificate No.)	Scheduled Calibration																												
Power meter EPM E442	GB37480704	6-Nov-03 (METAS, No. 252-0254)	Nov-04																												
Power sensor HP 8481A	US37292783	6-Nov-03 (METAS, No. 252-0254)	Nov-04																												
Fluke Process Calibrator Type 702	SN: 6295803	6-Sep-03 (Sintrel SCS No. E-030020)	Sep-04																												
Power sensor HP 8481A	MY41092180	18-Sep-02 (SPEAG, in house check Oct-03)	In house check: Oct 05																												
RF generator HP 8684C	US3642U01700	4-Aug-99 (SPEAG, in house check Aug-02)	In house check: Aug-05																												
Network Analyzer HP 8753E	US37390585	18-Oct-01 (SPEAG, in house check Oct-03)	In house check: Oct 05																												
Calibrated by:	Name Nico Vetterli	Function Technician	Signature 																												
Approved by:	Name Katja Pokovic	Function Laboratory Director	Signature 																												
Date issued: April 28, 2004																															
<p>This calibration certificate is issued as an intermediate solution until the accreditation process (based on ISO/IEC 17025 International Standard) for Calibration Laboratory of Schmid & Partner Engineering AG is completed.</p>																															

ET3DV6 SN:1782

April 28, 2004

DASY - Parameters of Probe: ET3DV6 SN:1782

Sensitivity in Probe Space

100Hz 1.29 μ V/mG
100Hz 1.72 μ V/mG

Drive Compression¹⁾

DDF X 14 100
DDF Y 14 100

Probe ET3DV6

SN:1782

Manufactured: April 15, 2003
Last calibrated: July 28, 2003
Recalibrated: April 28, 2004

Calibrated for DASY Systems

(Note: non-compatible with DASY2 system!)

The reported uncertainty of measurement is stated as the standard uncertainty of measurements multiplied by the coverage factor $k=2$, which for a normal distribution corresponds to a coverage probability of approximately 95%.

ET3DV6 SN:1782

April 28, 2004

DASY - Parameters of Probe: ET3DV6 SN:1782

Sensitivity in Free Space

NormX	2.03 $\mu\text{V}/(\text{V}/\text{m})^2$
NormY	1.72 $\mu\text{V}/(\text{V}/\text{m})^2$
NormZ	1.89 $\mu\text{V}/(\text{V}/\text{m})^2$

Diode Compression^A

DCP X	94	mV
DCP Y	94	mV
DCP Z	94	mV

Sensitivity in Tissue Simulating Liquid (Conversion Factors)

Please see Page 7.

Boundary Effect

Head 900 MHz Typical SAR gradient: 5 % per mm

Sensor Center to Phantom Surface Distance		3.7 mm	4.7 mm
SAR ₉₅ [%]	Without Correction Algorithm	8.0	4.0
SAR ₉₅ [%]	With Correction Algorithm	0.0	0.1

Head 1800 MHz Typical SAR gradient: 10 % per mm

Sensor Center to Phantom Surface Distance		3.7 mm	4.7 mm
SAR ₉₅ [%]	Without Correction Algorithm	12.7	6.5
SAR ₉₅ [%]	With Correction Algorithm	0.2	0.1

Sensor Offset

Probe Tip to Sensor Center	2.7 mm
Optical Surface Detection	in tolerance

The reported uncertainty of measurement is stated as the standard uncertainty of measurement multiplied by the coverage factor k=2, which for a normal distribution corresponds to a coverage probability of approximately 95%.

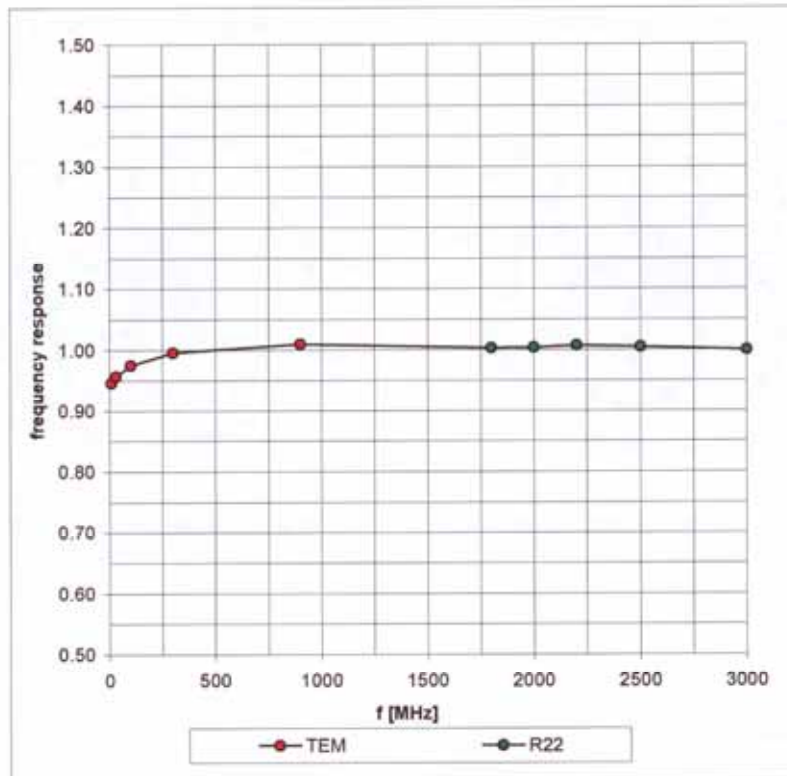
^A numerical linearization parameter: uncertainty not required

ET3DV6 SN:1782

April 28, 2004

Frequency Response of E-Field

(TEM-Cell:ifi110, Waveguide R22)

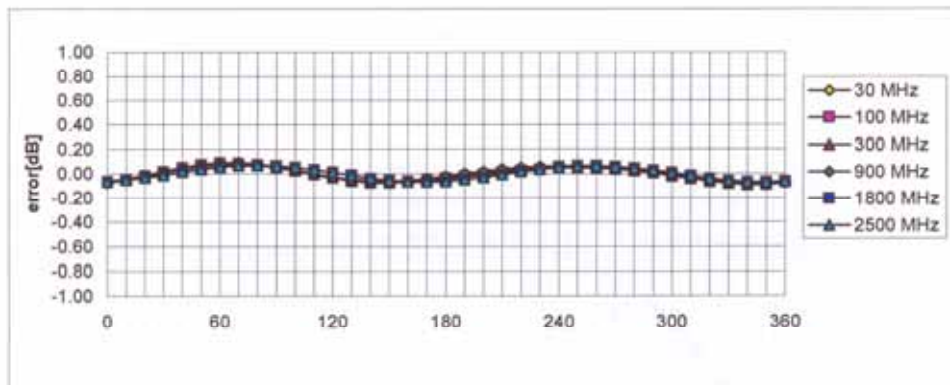
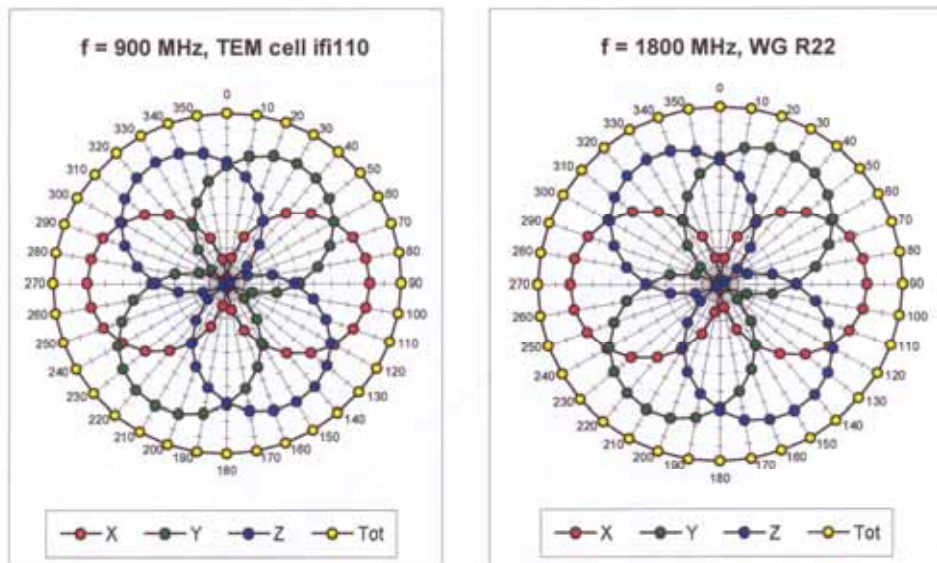


Arbitrariness Error < 2.0e-5

ET3DV6 SN:1782

April 28, 2004

Receiving Pattern (ϕ) , $\theta = 0^\circ$

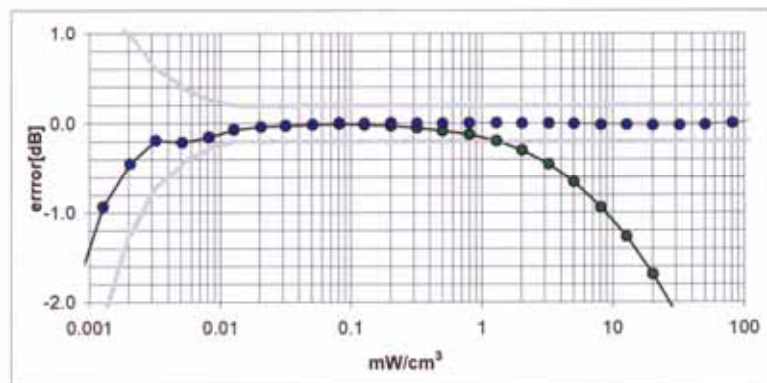
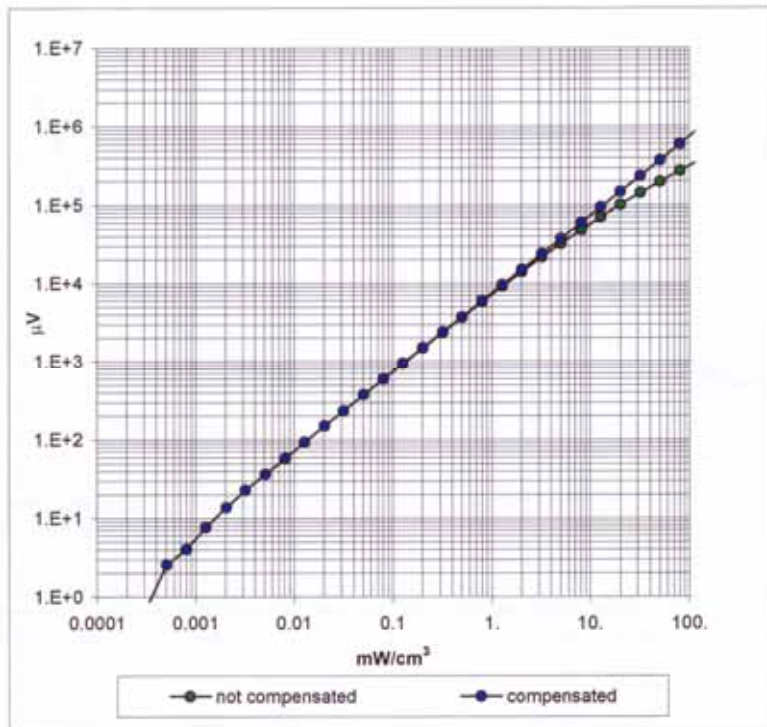


Axial Isotropy Error $\lt; \pm 0.2 \text{ dB}$

ET3DV6 SN:1782

April 28, 2004

Dynamic Range $f(SAR_{head})$
 (Waveguide R22)

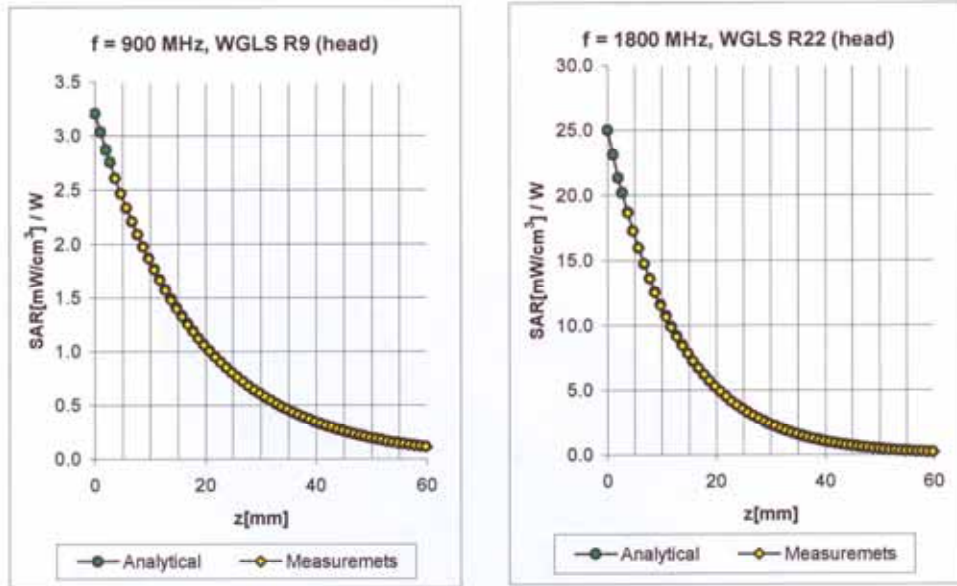


Probe Linearity $< \pm 0.2$ dB

ET3DV6 SN:1782

April 28, 2004

Conversion Factor Assessment



f [MHz]	Validity [MHz] ^B	Tissue	Permittivity	Conductivity	Alpha	Depth	ConvF Uncertainty
900	800-1000	Head	41.5 ± 5%	0.97 ± 5%	0.76	1.59	6.45 ± 11.3% (k=2)
1800	1710-1910	Head	40.0 ± 5%	1.40 ± 5%	0.47	2.62	5.07 ± 11.7% (k=2)
2450	2400-2500	Head	39.2 ± 5%	1.80 ± 5%	0.89	1.98	4.36 ± 9.7% (k=2)
835	785-885	Body	55.2 ± 5%	0.97 ± 5%	0.46	2.19	6.14 ± 9.7% (k=2)
900	850-950	Body	55.0 ± 5%	1.05 ± 5%	0.44	2.31	5.93 ± 9.7% (k=2)
1800	1710-1890	Body	53.3 ± 5%	1.52 ± 5%	0.52	2.80	4.55 ± 10.9% (k=2)
1900	1805-1995	Body	53.3 ± 5%	1.52 ± 5%	0.56	2.86	4.40 ± 11.1% (k=2)
2450	2400-2500	Body	52.7 ± 5%	1.95 ± 5%	1.01	1.71	4.22 ± 9.7% (k=2)

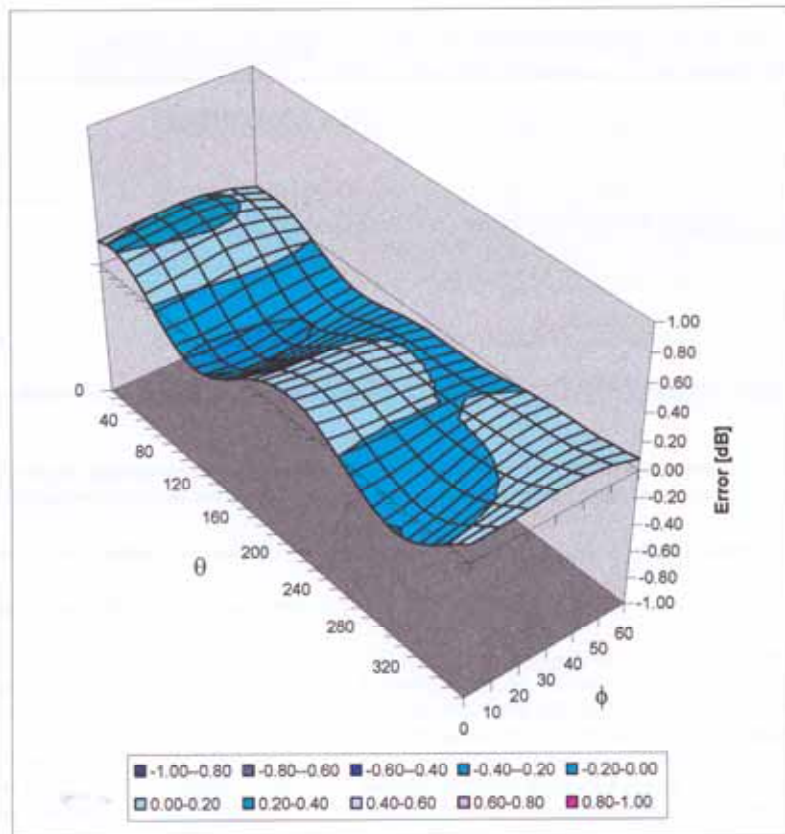
^B The total standard uncertainty is calculated as root-sum-square of standard uncertainty of the Conversion Factor at calibration frequency and the standard uncertainty for the indicated frequency band.

ET3DV6 SN:1782

April 28, 2004

Deviation from Isotropy in HSL

Error (θ, ϕ), $f = 900$ MHz



Spherical Isotropy Error < ± 0.4 dB

Schmid & Partner Engineering AG

s p e a gZeughausstrasse 43, 8004 Zurich, Switzerland
Phone +41 1 245 9700, Fax +41 1 245 9779
info@speag.com, http://www.speag.com

Additional Conversion Factors

for Dosimetric E-Field Probe

Type:

ET3DV6

Serial Number:

1782

Place of Assessment:

Zurich

Date of Assessment:

May 1, 2004

Probe Calibration Date:

April 28, 2004

Schmid & Partner Engineering AG hereby certifies that conversion factor(s) of this probe have been evaluated on the date indicated above. The assessment was performed using the FDTD numerical code SEMCAD of Schmid & Partner Engineering AG. Since the evaluation is coupled with measured conversion factors, it has to be recalculated yearly, i.e., following the re-calibration schedule of the probe. The uncertainty of the numerical assessment is based on the extrapolation from measured value at 900 MHz or at 1800 MHz.

Assessed by:



Schmid & Partner Engineering AG

s p e a g

Zeughausstrasse 43, 8004 Zurich, Switzerland
Phone +41 1 245 9700, Fax +41 1 245 9779
info@speag.com, http://www.speag.com

Dosimetric E-Field Probe ET3DV6 SN:1782

Conversion factor (\pm standard deviation)

450 MHz ConvF $7.6 \pm 8\%$

$\epsilon_r = 43.5 \pm 5\%$
 $\sigma = 0.87 \pm 5\%$ mho/m
(head tissue)

450 MHz ConvF $7.4 \pm 8\%$

$\epsilon_r = 56.7 \pm 5\%$
 $\sigma = 0.94 \pm 5\%$ mho/m
(body tissue)

Important Note:

For numerically assessed probe conversion factors, parameters Alpha and Delta in the DASY software must have the following entries: Alpha = 0 and Delta = 1.

Please see also Section 4.7 of the DASY4 Manual.

Schmid & Partner Engineering AG

s p e a g

Zeughausstrasse 43, 8004 Zurich, Switzerland
Phone +41 1 245 9700, Fax +41 1 245 9779
info@speag.com, http://www.speag.com

Additional Conversion Factors for Dosimetric E-Field Probe

Type:

ET3DV6

Serial Number:

1782

Place of Assessment:

Zurich

Date of Assessment:

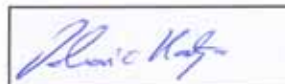
May 21, 2004

Probe Calibration Date:

April 28, 2004

Schmid & Partner Engineering AG hereby certifies that conversion factor(s) of this probe have been evaluated on the date indicated above. The assessment was performed using the FDTD numerical code SEMCAD of Schmid & Partner Engineering AG. Since the evaluation is coupled with measured conversion factors, it has to be recalculated yearly, i.e., following the re-calibration schedule of the probe. The uncertainty of the numerical assessment is based on the extrapolation from measured value at 900 MHz or at 1800 MHz.

Assessed by:



Schmid & Partner Engineering AG

s p e a g

Zeughausstrasse 43, 8004 Zurich, Switzerland
 Phone +41 1 245 9700, Fax +41 1 245 9779
 info@speag.com, http://www.speag.com

Dosimetric E-Field Probe ET3DV6 SN:1782

Conversion factor (\pm standard deviation)

75 MHz (65-85 MHz)	ConvF	8.6 \pm 8%	$\epsilon_r = 70.0 \pm 5\%$ $\sigma = 0.70 \pm 5\%$ mho/m (body tissue)
150 MHz (100-200 MHz)	ConvF	8.9 \pm 8%	$\epsilon_r = 52.3 \pm 5\%$ $\sigma = 0.76 \pm 5\%$ mho/m (head tissue)
150 MHz (100-200 MHz)	ConvF	8.5 \pm 8%	$\epsilon_r = 61.9 \pm 5\%$ $\sigma = 0.80 \pm 5\%$ mho/m (body tissue)
1950 MHz (1900-2000 MHz)	ConvF	4.8 \pm 8%	$\epsilon_r = 40.0 \pm 5\%$ $\sigma = 1.40 \pm 5\%$ mho/m (head tissue)

Important Note:

For numerically assessed probe conversion factors, parameters Alpha and Delta in the DASY software must have the following entries: Alpha = 0 and Delta = 1.

Please see also Section 4.7 of the DASY4 Manual.

Schmid & Partner Engineering AG

s p e a g

Zeughausstrasse 43, 8004 Zurich, Switzerland
Phone +41 1 245 9700, Fax +41 1 245 9779
info@speag.com, http://www.speag.com

Additional Conversion Factors for Dosimetric E-Field Probe

Type:

ET3DV6

Serial Number:

1782

Place of Assessment:

Zurich

Date of Assessment:

June 14, 2004

Probe Calibration Date:

April 28, 2004

Schmid & Partner Engineering AG hereby certifies that conversion factor(s) of this probe have been evaluated on the date indicated above. The assessment was performed using the FDTD numerical code SEMCAD of Schmid & Partner Engineering AG. Since the evaluation is coupled with measured conversion factors, it has to be recalculated yearly, i.e., following the re-calibration schedule of the probe. The uncertainty of the numerical assessment is based on the extrapolation from measured value at 900 MHz or at 1800 MHz.

Assessed by:



Schmid & Partner Engineering AG

s p e a g

Zeughausstrasse 43, 8004 Zurich, Switzerland
Phone +41 1 245 9700, Fax +41 1 245 9779
info@speag.com, http://www.speag.com

Dosimetric E-Field Probe ET3DV6 SN:1782

Conversion factor (\pm standard deviation)

300 MHz ConvF 7.4 \pm 8%
(250-350 MHz)

$\epsilon_r = 58.2 \pm 5\%$
 $\sigma = 0.92 \pm 5\%$ mho/m
(body tissue)

300 MHz ConvF 7.6 \pm 8%
(250-350 MHz)

$\epsilon_r = 45.3 \pm 5\%$
 $\sigma = 0.87 \pm 5\%$ mho/m
(head tissue)

Important Note:

For numerically assessed probe conversion factors, parameters Alpha and Delta in the DASY software must have the following entries: Alpha = 0 and Delta = 1.

Please see also Section 4.7 of the DASY4 Manual.

-DAE Calibration Certificate

**Calibration Laboratory of
 Schmid & Partner
 Engineering AG**
 Zeughausstrasse 43, 8004 Zurich, Switzerland



S Schweizerischer Kalibrierdienst
C Service suisse d'étalonnage
S Servizio svizzero di taratura
S Swiss Calibration Service

Accredited by the Swiss Federal Office of Metrology and Accreditation
 The Swiss Accreditation Service is one of the signatories to the EA
 Multilateral Agreement for the recognition of calibration certificates

Accreditation No.: **SCS 108**

Client **SGS KES (Dymstec)**

Certificate No: **DAE3-567_Sep05**

CALIBRATION CERTIFICATE			
Object	DAE3 - SD 000 D03 AA - SN: 567		
Calibration procedure(s)	QA CAL-06.v12 Calibration procedure for the data acquisition unit (DAE)		
Calibration date:	September 21, 2005		
Condition of the calibrated item	In Tolerance		
This calibration certificate documents the traceability to national standards, which realize the physical units of measurements (SI). The measurements and the uncertainties with confidence probability are given on the following pages and are part of the certificate.			
All calibrations have been conducted in the closed laboratory facility: environment temperature (22 ± 3)°C and humidity < 70%.			
Calibration Equipment used (M&TE critical for calibration)			
Primary Standards	ID #	Cal Date (Calibrated by, Certificate No.)	Scheduled Calibration
Fuke Process Calibrator Type 5101B	SN: 5015004	29-Jun-05 (ELCAL AG, No. 366856)	Jun-06
Secondary Standards	ID #	Check Date (in house)	Scheduled Check
Calibrator Box V1.1	SE UMS 006 AB 1002	29-Jun-05 (SPEAG, in house check)	In house check Jun-06
Calibrated by:	Name Philipp Storchenegger	Function Technician	Signature
Approved by:	Fin Bomholt	R&D Director	
Issued: September 21, 2005			
This calibration certificate shall not be reproduced except in full without written approval of the laboratory.			

**Calibration Laboratory of
 Schmid & Partner
 Engineering AG**
 Zeughausstrasse 43, 8004 Zurich, Switzerland



S Schweizerischer Kalibrierdienst
C Service suisse d'étalonnage
S Servizio svizzero di taratura
S Swiss Calibration Service

Accredited by the Swiss Federal Office of Metrology and Accreditation
 The Swiss Accreditation Service is one of the signatories to the EA
 Multilateral Agreement for the recognition of calibration certificates

Accreditation No.: **SCS 108**

Glossary

DAE digital acquisition electronics
Connector angle information used in DASY system to align probe sensor X to the robot coordinate system.

Methods Applied and Interpretation of Parameters

- **DC Voltage Measurement:** Calibration Factor assessed for use in DASY system by comparison with a calibrated instrument traceable to national standards. The figure given corresponds to the full scale range of the voltmeter in the respective range.
- **Connector angle:** The angle of the connector is assessed measuring the angle mechanically by a tool inserted. Uncertainty is not required.
- The following parameters contain technical information as a result from the performance test and require no uncertainty.
- **DC Voltage Measurement Linearity:** Verification of the Linearity at +10% and -10% of the nominal calibration voltage. Influence of offset voltage is included in this measurement.
- **Common mode sensitivity:** Influence of a positive or negative common mode voltage on the differential measurement.
- **Channel separation:** Influence of a voltage on the neighbor channels not subject to an input voltage.
- **AD Converter Values with inputs shorted:** Values on the internal AD converter corresponding to zero input voltage
- **Input Offset Measurement:** Output voltage and statistical results over a large number of zero voltage measurements.
- **Input Offset Current:** Typical value for information; Maximum channel input offset current, not considering the input resistance.
- **Input resistance:** DAE input resistance at the connector, during internal auto-zeroing and during measurement.
- **Low Battery Alarm Voltage:** Typical value for information. Below this voltage, a battery alarm signal is generated.
- **Power consumption:** Typical value for information. Supply currents in various operating modes.

DC Voltage Measurement

A/D - Converter Resolution nominal

High Range: 1LSB = 6.1 μ V, full range = -100...+300 mV
 Low Range: 1LSB = 61nV, full range = -1.....+3mV

DASY measurement parameters: Auto Zero Time: 3 sec; Measuring time: 3 sec

Calibration Factors	X	Y	Z
High Range	404.737 \pm 0.1% (k=2)	404.490 \pm 0.1% (k=2)	404.564 \pm 0.1% (k=2)
Low Range	3.93878 \pm 0.7% (k=2)	3.95177 \pm 0.7% (k=2)	3.94259 \pm 0.7% (k=2)

Connector Angle

Connector Angle to be used in DASY system	83 $^{\circ}$ \pm 1 $^{\circ}$
---	----------------------------------

Appendix
1. DC Voltage Linearity

High Range	Input (μV)	Reading (μV)	Error (%)
Channel X + Input	200000	199999.4	0.00
Channel X + Input	20000	20000.91	0.00
Channel X - Input	20000	-19997.17	-0.01
Channel Y + Input	200000	199999.3	0.00
Channel Y + Input	20000	20000.15	0.00
Channel Y - Input	20000	-19996.82	-0.02
Channel Z + Input	200000	199999.6	0.00
Channel Z + Input	20000	19996.08	-0.02
Channel Z - Input	20000	-19997.52	-0.01

Low Range	Input (μV)	Reading (μV)	Error (%)
Channel X + Input	2000	1999.9	0.00
Channel X + Input	200	200.49	0.25
Channel X - Input	200	-200.54	0.27
Channel Y + Input	2000	2000.0	0.00
Channel Y + Input	200	199.48	-0.26
Channel Y - Input	200	-201.00	0.50
Channel Z + Input	2000	2000.1	0.00
Channel Z + Input	200	199.51	-0.25
Channel Z - Input	200	-201.12	0.56

2. Common mode sensitivity

DASY measurement parameters: Auto Zero Time: 3 sec; Measuring time: 3 sec

	Common mode Input Voltage (mV)	High Range Average Reading (μV)	Low Range Average Reading (μV)
Channel X	200	3.18	2.44
	- 200	-1.16	-2.24
Channel Y	200	2.15	1.45
	- 200	-2.49	-3.08
Channel Z	200	6.20	5.84
	- 200	-7.85	-7.71

3. Channel separation

DASY measurement parameters: Auto Zero Time: 3 sec; Measuring time: 3 sec

	Input Voltage (mV)	Channel X (μV)	Channel Y (μV)	Channel Z (μV)
Channel X	200	-	3.04	0.31
Channel Y	200	2.04	-	4.47
Channel Z	200	-1.13	0.50	-

4. AD-Converter Values with inputs shorted

DASY measurement parameters: Auto Zero Time: 3 sec; Measuring time: 3 sec

	High Range (LSB)	Low Range (LSB)
Channel X	16358	16626
Channel Y	16135	16300
Channel Z	15908	15338

5. Input Offset Measurement

DASY measurement parameters: Auto Zero Time: 3 sec; Measuring time: 3 sec

Input 10M Ω

	Average (μ V)	min. Offset (μ V)	max. Offset (μ V)	Std. Deviation (μ V)
Channel X	0.18	-0.91	1.18	0.40
Channel Y	-0.98	-2.45	0.54	0.38
Channel Z	-0.57	-1.55	0.47	0.35

6. Input Offset Current

Nominal Input circuitry offset current on all channels: <25fA

7. Input Resistance

	Zeroing (MOhm)	Measuring (MOhm)
Channel X	0.2000	202.6
Channel Y	0.2001	202.2
Channel Z	0.2000	200.4

8. Low Battery Alarm Voltage (verified during pre test)

Typical values	Alarm Level (VDC)
Supply (+ Vcc)	+7.9
Supply (- Vcc)	-7.6

9. Power Consumption (verified during pre test)

Typical values	Switched off (mA)	Stand by (mA)	Transmitting (mA)
Supply (+ Vcc)	+0.0	+6	+14
Supply (- Vcc)	-0.01	-8	-9

- 2450 MHz Dipole Calibration Certificate

**Calibration Laboratory of
 Schmid & Partner
 Engineering AG**
 Zeughausstrasse 43, 8004 Zurich, Switzerland



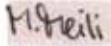

S Schweizerischer Kalibrierdienst
C Service suisse d'étalonnage
S Servizio svizzero di taratura
S Swiss Calibration Service

Accredited by the Swiss Federal Office of Metrology and Accreditation
 The Swiss Accreditation Service is one of the signatories to the EA
 Multilateral Agreement for the recognition of calibration certificates

Accreditation No.: **SCS 108**

Client **SGS (Dymstec)**

Certificate No: **D2450V2-734_Aug05**

CALIBRATION CERTIFICATE			
Object	D2450V2 - SN: 734		
Calibration procedure(s)	QA CAL-05.v6 Calibration procedure for dipole validation kits		
Calibration date:	August 23, 2005		
Condition of the calibrated item	In Tolerance		
<p>This calibration certificate documents the traceability to national standards, which realize the physical units of measurements (SI). The measurements and the uncertainties with confidence probability are given on the following pages and are part of the certificate.</p> <p>All calibrations have been conducted in the closed laboratory facility: environment temperature (22 ± 3)°C and humidity < 70%.</p> <p>Calibration Equipment used (M&TE critical for calibration)</p>			
Primary Standards	ID #	Cal Date (Calibrated by, Certificate No.)	Scheduled Calibration
Power meter EPM E442	GB37480704	12-Oct-04 (METAS, No. 251-00412)	Oct-05
Power sensor HP 8481A	US37292783	12-Oct-04 (METAS, No. 251-00412)	Oct-05
Reference 20 dB Attenuator	SN: 5086 (20g)	11-Aug-05 (METAS, No 251-00498)	Aug-06
Reference 10 dB Attenuator	SN: 5047.2 (10r)	11-Aug-05 (METAS, No 251-00498)	Aug-06
Reference Probe ES3DV2	SN 3025	29-Oct-04 (SPEAG, No. ES3-3025_Oct04)	Oct-05
D4E4	SN 601	07-Jan-05 (SPEAG, No. DAE4-601_Jan05)	Jan-06
Secondary Standards	ID #	Check Date (in house)	Scheduled Check
Power sensor HP 8481A	MY41092317	18-Oct-02 (SPEAG, in house check Oct-03)	In house check: Oct-05
RF generator R&S SML-03	100698	27-Mar-02 (SPEAG, in house check Dec-03)	In house check: Dec-05
Network Analyzer HP 8753E	US37390585 S4206	18-Oct-01 (SPEAG, in house check Nov-04)	In house check: Nov-05
Calibrated by:	Name Mike Meili	Function Laboratory Technician	Signature 
Approved by:	Name Katja Pokovic	Function Technical Manager	Signature 
			Issued: August 25, 2005
This calibration certificate shall not be reproduced except in full without written approval of the laboratory.			

**Calibration Laboratory of
 Schmid & Partner
 Engineering AG**
 Zeughausstrasse 43, 8004 Zurich, Switzerland



S Schweizerischer Kalibrierdienst
C Service suisse d'étalonnage
S Servizio svizzero di taratura
S Swiss Calibration Service

Accredited by the Swiss Federal Office of Metrology and Accreditation
 The Swiss Accreditation Service is one of the signatories to the EA
 Multilateral Agreement for the recognition of calibration certificates

Accreditation No.: **SCS 108**

Glossary:

TSL tissue simulating liquid
 ConvF sensitivity in TSL / NORM x,y,z
 N/A not applicable or not measured

Calibration is Performed According to the Following Standards:

- a) IEEE Std 1528-2003, "IEEE Recommended Practice for Determining the Peak Spatial-Averaged Specific Absorption Rate (SAR) in the Human Head from Wireless Communications Devices: Measurement Techniques", December 2003
- b) CENELEC EN 50361, "Basic standard for the measurement of Specific Absorption Rate related to human exposure to electromagnetic fields from mobile phones (300 MHz - 3 GHz), July 2001
- c) Federal Communications Commission Office of Engineering & Technology (FCC OET), "Evaluating Compliance with FCC Guidelines for Human Exposure to Radiofrequency Electromagnetic Fields; Additional Information for Evaluating Compliance of Mobile and Portable Devices with FCC Limits for Human Exposure to Radiofrequency Emissions", Supplement C (Edition 01-01) to Bulletin 65

Additional Documentation:

- d) DASY4 System Handbook

Methods Applied and Interpretation of Parameters:

- *Measurement Conditions:* Further details are available from the Validation Report at the end of the certificate. All figures stated in the certificate are valid at the frequency indicated.
- *Antenna Parameters with TSL:* The dipole is mounted with the spacer to position its feed point exactly below the center marking of the flat phantom section, with the arms oriented parallel to the body axis.
- *Feed Point Impedance and Return Loss:* These parameters are measured with the dipole positioned under the liquid filled phantom. The impedance stated is transformed from the measurement at the SMA connector to the feed point. The Return Loss ensures low reflected power. No uncertainty required.
- *Electrical Delay:* One-way delay between the SMA connector and the antenna feed point. No uncertainty required.
- *SAR measured:* SAR measured at the stated antenna input power.
- *SAR normalized:* SAR as measured, normalized to an input power of 1 W at the antenna connector.
- *SAR for nominal TSL parameters:* The measured TSL parameters are used to calculate the nominal SAR result.

Measurement Conditions

DASY system configuration, as far as not given on page 1.

DASY Version	DASY4	V4.6
Extrapolation	Advanced Extrapolation	
Phantom	Modular Flat Phantom V5.0	
Distance Dipole Center - TSL	10 mm	with Spacer
Area Scan resolution	dx, dy = 15 mm	
Zoom Scan Resolution	dx, dy, dz = 5 mm	
Frequency	2450 MHz ± 1 MHz	

Head TSL parameters

The following parameters and calculations were applied.

	Temperature	Permittivity	Conductivity
Nominal Head TSL parameters	22.0 °C	39.2	1.80 mho/m
Measured Head TSL parameters	(22.0 ± 0.2) °C	38.5 ± 6 %	1.73 mho/m ± 6 %
Head TSL temperature during test	(21.0 ± 0.2) °C	38.4 ± 6 %	1.77 mho/m ± 6 %

SAR result with Head TSL

SAR averaged over 1 cm ³ (1 g) of Head TSL	condition	
SAR measured	250 mW input power	13.7 mW / g
SAR normalized	normalized to 1W	54.8 mW / g
SAR for nominal Head TSL parameters ¹	normalized to 1W	55.2 mW / g ± 17.0 % (k=2)

SAR averaged over 10 cm ³ (10 g) of Head TSL	condition	
SAR measured	250 mW input power	6.35 mW / g
SAR normalized	normalized to 1W	25.4 mW / g
SAR for nominal Head TSL parameters ¹	normalized to 1W	25.6 mW / g ± 16.5 % (k=2)

¹ Correction to nominal TSL parameters according to d), chapter "SAR Sensitivities"

Appendix

Antenna Parameters with Head TSL

Impedance, transformed to feed point	53.7 Ω + 2.5 $j\Omega$
Return Loss	-27.3 dB

General Antenna Parameters and Design

Electrical Delay (one direction)	1.152 ns
----------------------------------	----------

After long term use with 100W radiated power, only a slight warming of the dipole near the feedpoint can be measured.

The dipole is made of standard semirigid coaxial cable. The center conductor of the feeding line is directly connected to the second arm of the dipole. The antenna is therefore short-circuited for DC-signals.

No excessive force must be applied to the dipole arms, because they might bend or the soldered connections near the feedpoint may be damaged.

Additional EUT Data

Manufactured by	SPEAG
Manufactured on	May 7 , 2003

DASY4 Validation Report for Head TSL

Date/Time: 23.08.2005 18:04:57

Test Laboratory: SPEAG, Zurich, Switzerland

DUT: Dipole 2450 MHz; Type: D2450V2; Serial: D2450V2 - SN734

Communication System: CW-2450; Frequency: 2450 MHz; Duty Cycle: 1:1

Medium: HSL U10 BB;

Medium parameters used: $f = 2450$ MHz; $\sigma = 1.77$ mho/m; $\epsilon_r = 38.4$; $\rho = 1000$ kg/m³

Phantom section: Flat Section

Measurement Standard: DASY4 (High Precision Assessment)

DASY4 Configuration:

- Probe: ES3DV2 - SN3025; ConvF(4.4, 4.4, 4.4); Calibrated: 29.10.2004
- Sensor-Surface: 4mm (Mechanical Surface Detection)
- Electronics: DAE4 Sn601; Calibrated: 22.07.2004
- Phantom: Flat Phantom 5.0 (front); Type: QD000P50AA
- Measurement SW: DASY4, V4.6 Build 9; Postprocessing SW: SEMCAD, V1.8 Build 151

Pin = 250 mW; d = 10 mm/Area Scan (41x61x1):

Measurement grid: dx=15mm, dy=15mm

Maximum value of SAR (interpolated) = 17.3 mW/g

Pin = 250 mW; d = 10 mm/Zoom Scan (7x7x7)/Cube 0:

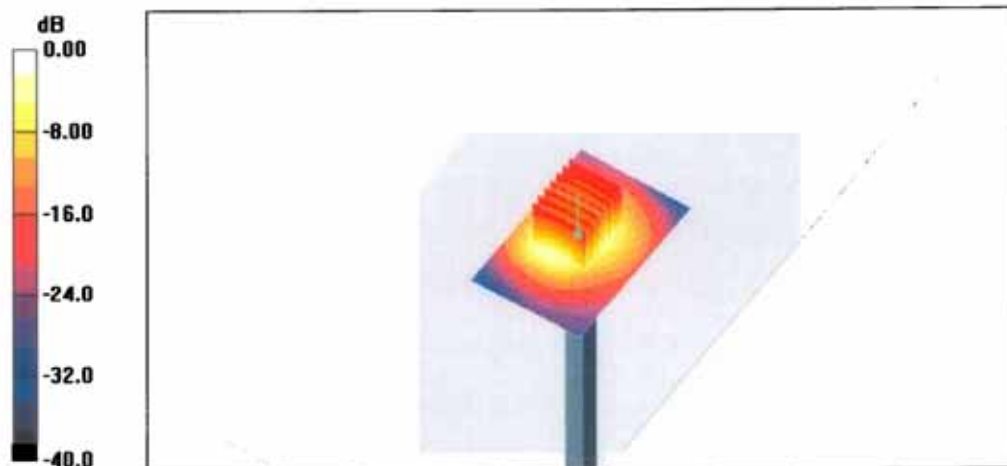
Measurement grid: dx=5mm, dy=5mm, dz=5mm

Reference Value = 88.4 V/m; Power Drift = 0.01 dB

Peak SAR (extrapolated) = 28.4 W/kg

SAR(1 g) = 13.7 mW/g; SAR(10 g) = 6.35 mW/g

Maximum value of SAR (measured) = 15.4 mW/g



0 dB = 15.4mW/g

Impedance Measurement Plot for Head TSL

