

20181127_SystemPerformanceCheck-D835V2 SN 4d117

Frequency: 835 MHz; Duty Cycle: 1:1; Room Ambient Temperature: 24.0°C; Liquid Temperature: 23.0°C

Medium parameters used: $f = 835 \text{ MHz}$; $\sigma = 0.983 \text{ S/m}$; $\epsilon_r = 53.393$; $\rho = 1000 \text{ kg/m}^3$

DASY5 Configuration:

- Area Scan Setting: Find Secondary Maximum Within: 2.0 dB and with a peak SAR value greater than 0.0012W/kg
- Electronics: DAE4 Sn1359; Calibrated: 2/9/2018
- Probe: EX3DV4 - SN7463; ConvF(9.22, 9.22, 9.22); Calibrated: 7/20/2018, ConvF(9.22, 9.22, 9.22); Calibrated: 7/20/2018;
- Sensor-Surface: 2.5mm (Mechanical Surface Detection)
- Phantom: ELI V5.0 Slot 1/2; Type: QD OVA 002 Ax; Serial: 1119

Body/Pin=100 mW/Area Scan (7x7x1): Measurement grid: dx=15mm, dy=15mm

Maximum value of SAR (measured) = 1.23 W/kg

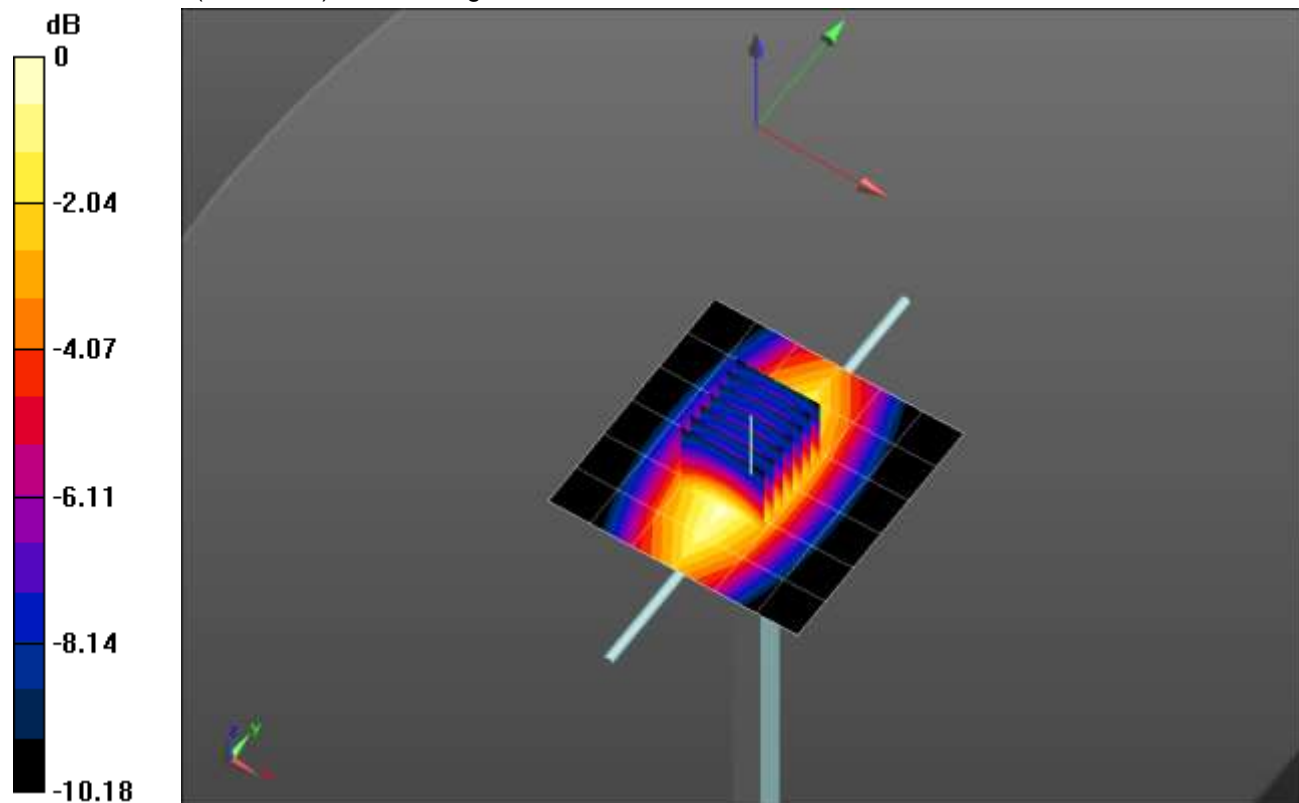
Body/Pin=100 mW/Zoom Scan (7x7x7)/Cube 0: Measurement grid: dx=5mm, dy=5mm, dz=5mm

Reference Value = 36.56 V/m; Power Drift = -0.16 dB

Peak SAR (extrapolated) = 1.46 W/kg

SAR(1 g) = 0.990 W/kg; SAR(10 g) = 0.654 W/kg

Maximum value of SAR (measured) = 1.20 W/kg

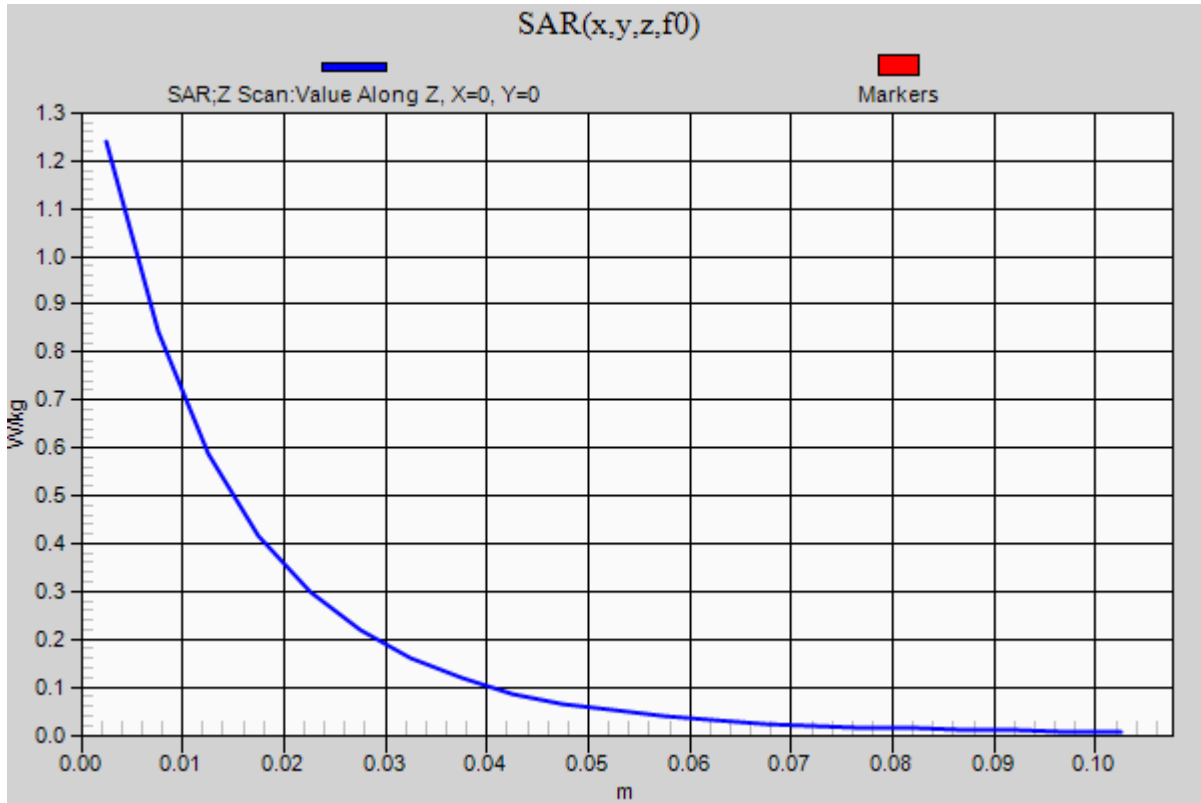


0 dB = 1.20 W/kg = 0.79 dBW/kg

20181127_SystemPerformanceCheck-D835V2 SN 4d117

Frequency: 835 MHz; Duty Cycle: 1:1

Body/Pin=100 mW/Z Scan (1x1x21): Measurement grid: dx=20mm, dy=20mm, dz=5mm
Maximum value of SAR (measured) = 1.24 W/kg



20181130_SystemPerformanceCheck-D1900V2 SN 5d163

Frequency: 1900 MHz; Duty Cycle: 1:1; Room Ambient Temperature: 24.0°C; Liquid Temperature: 23.0°C

Medium parameters used: $f = 1900$ MHz; $\sigma = 1.576$ S/m; $\epsilon_r = 50.676$; $\rho = 1000$ kg/m³

DASY5 Configuration:

- Area Scan Setting: Find Secondary Maximum Within: 2.0 dB and with a peak SAR value greater than 0.0012W/kg
- Electronics: DAE4 Sn1359; Calibrated: 2/9/2018
- Probe: EX3DV4 - SN7463; ConvF(7.56, 7.56, 7.56); Calibrated: 7/20/2018, ConvF(7.56, 7.56, 7.56); Calibrated: 7/20/2018;
- Sensor-Surface: 2.5mm (Mechanical Surface Detection)
- Phantom: ELI V5.0 Slot 1/2; Type: QD OVA 002 Ax; Serial: 1119

Body/Pin=100 mW/Area Scan (7x7x1): Measurement grid: dx=15mm, dy=15mm

Maximum value of SAR (measured) = 5.80 W/kg

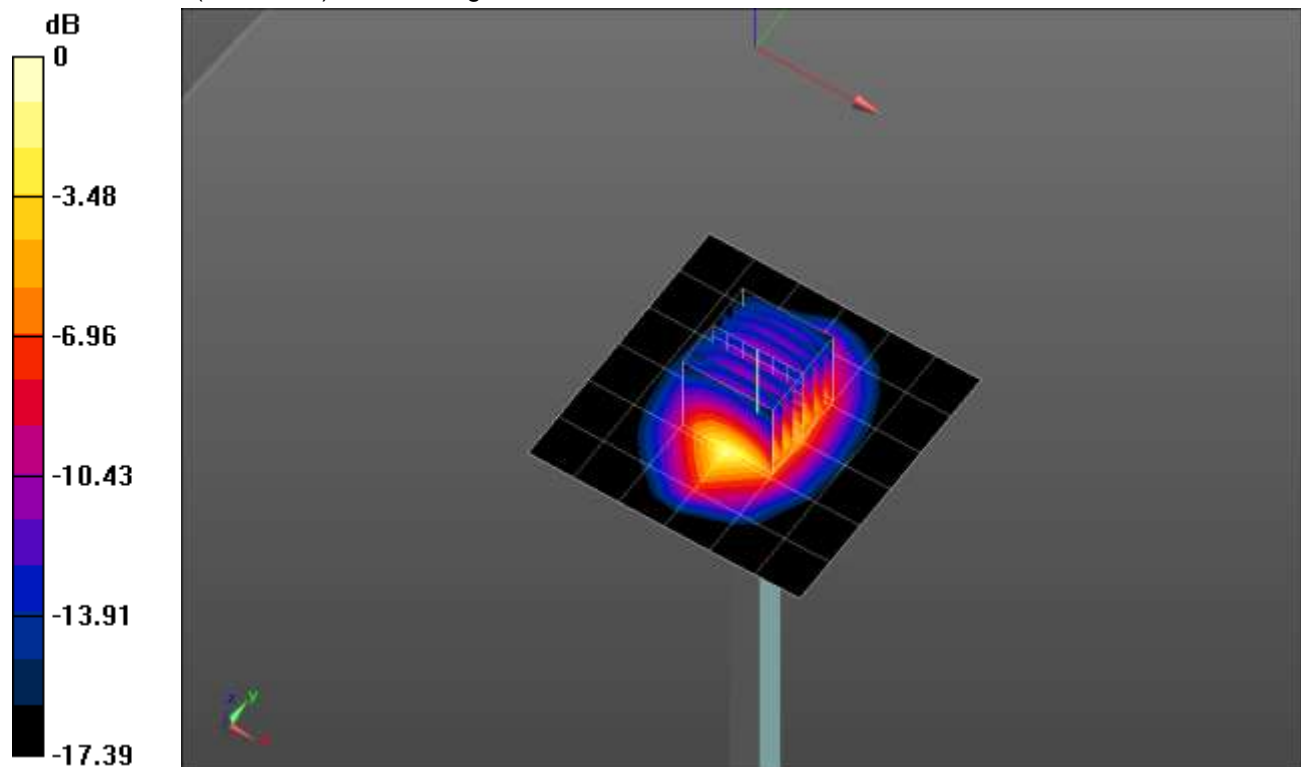
Body/Pin=100 mW/Zoom Scan (7x7x7)/Cube 0: Measurement grid: dx=5mm, dy=5mm, dz=5mm

Reference Value = 60.77 V/m; Power Drift = -0.04 dB

Peak SAR (extrapolated) = 7.95 W/kg

SAR(1 g) = 4.3 W/kg; SAR(10 g) = 2.23 W/kg

Maximum value of SAR (measured) = 5.82 W/kg

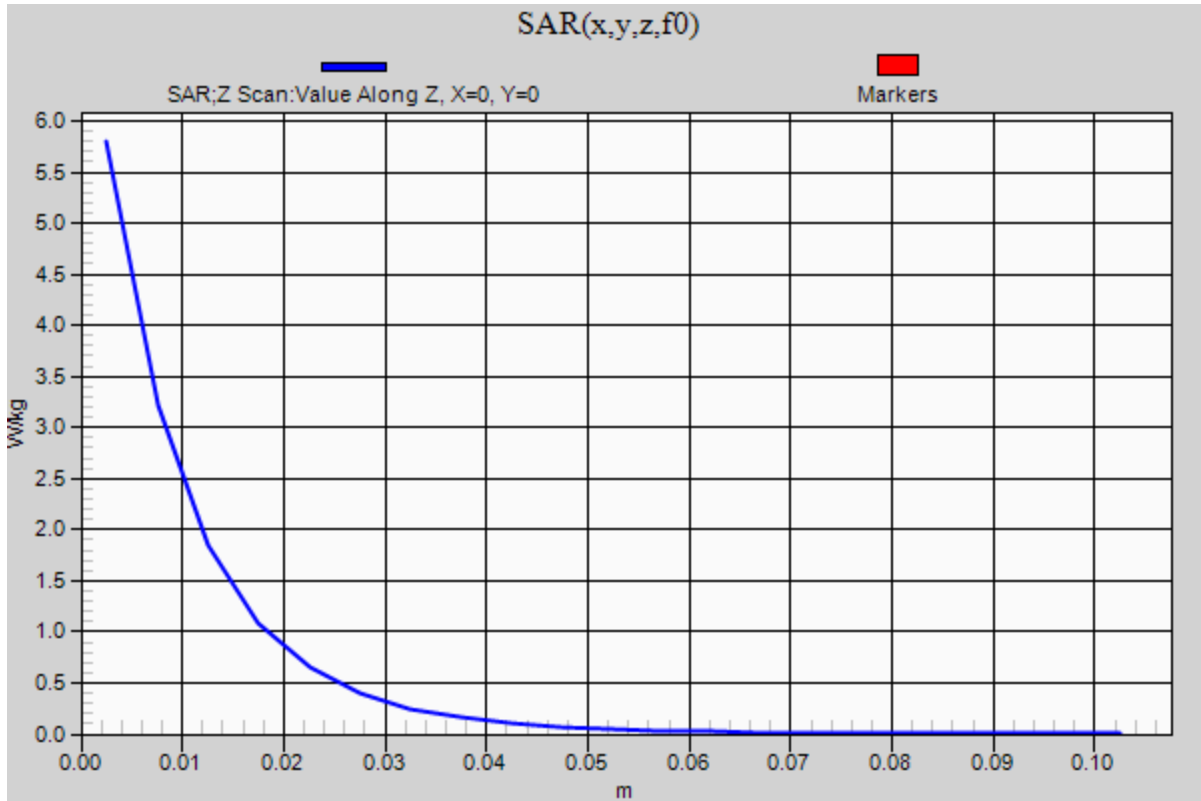


0 dB = 5.82 W/kg = 7.65 dBW/kg

20181130_SystemPerformanceCheck-D1900V2 SN 5d163

Frequency: 1900 MHz; Duty Cycle: 1:1

Body/Pin=100 mW/Z Scan (1x1x21): Measurement grid: dx=20mm, dy=20mm, dz=5mm
Maximum value of SAR (measured) = 5.80 W/kg



20181203_SystemPerformanceCheck-D750V3 SN 1024

Frequency: 750 MHz; Duty Cycle: 1:1; Room Ambient Temperature: 24.0°C; Liquid Temperature: 23.0°C

Medium parameters used: $f = 750$ MHz; $\sigma = 0.95$ S/m; $\epsilon_r = 53.092$; $\rho = 1000$ kg/m³

DASY5 Configuration:

- Area Scan Setting: Find Secondary Maximum Within: 2.0 dB and with a peak SAR value greater than 0.0012W/kg
- Electronics: DAE4 Sn1359; Calibrated: 2/9/2018
- Probe: EX3DV4 - SN7463; ConvF(9.49, 9.49, 9.49); Calibrated: 7/20/2018, ConvF(9.49, 9.49, 9.49); Calibrated: 7/20/2018;
- Sensor-Surface: 2.5mm (Mechanical Surface Detection)
- Phantom: ELI V5.0 Slot 1/2; Type: QD OVA 002 Ax; Serial: 1119

Body/Pin=100 mW/Area Scan (7x7x1): Measurement grid: dx=15mm, dy=15mm

Maximum value of SAR (measured) = 1.09 W/kg

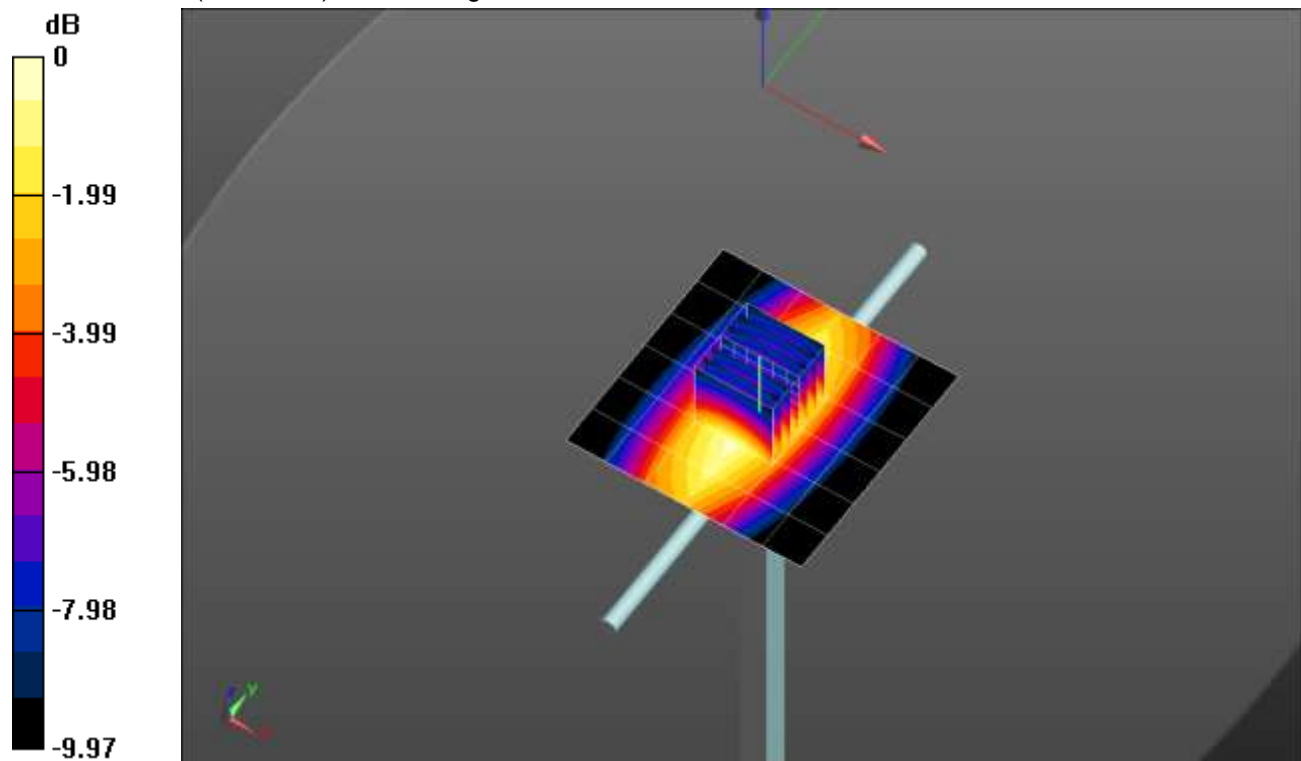
Body/Pin=100 mW/Zoom Scan (7x7x7)/Cube 0: Measurement grid: dx=5mm, dy=5mm, dz=5mm

Reference Value = 34.25 V/m; Power Drift = -0.05 dB

Peak SAR (extrapolated) = 1.33 W/kg

SAR(1 g) = 0.904 W/kg; SAR(10 g) = 0.602 W/kg

Maximum value of SAR (measured) = 1.09 W/kg

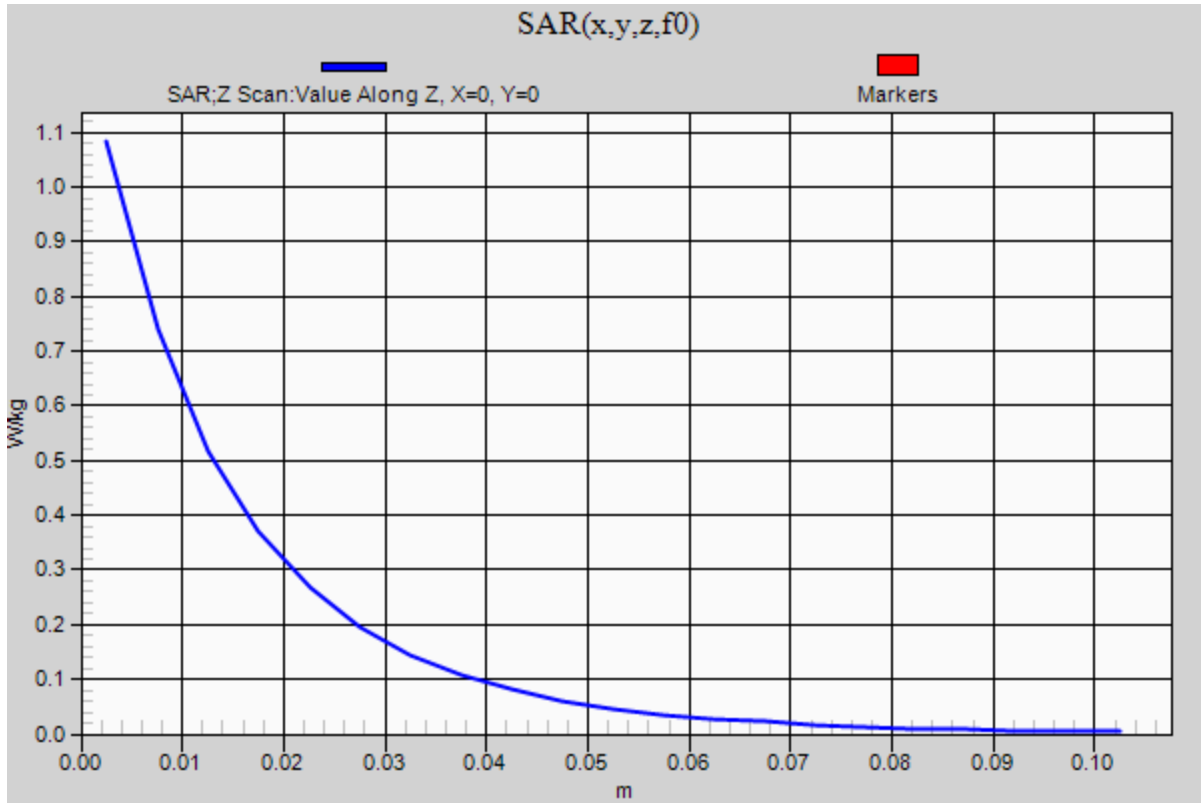


0 dB = 1.09 W/kg = 0.37 dBW/kg

20181203_SystemPerformanceCheck-D750V3 SN 1024

Frequency: 750 MHz; Duty Cycle: 1:1

Body/Pin=100 mW/Z Scan (1x1x21): Measurement grid: dx=20mm, dy=20mm, dz=5mm
Maximum value of SAR (measured) = 1.08 W/kg



20181203_SystemPerformanceCheck-D1750V2 SN 1077

Frequency: 1750 MHz; Duty Cycle: 1:1; Room Ambient Temperature: 24.0°C; Liquid Temperature: 23.0°C

Medium parameters used: $f = 1750$ MHz; $\sigma = 1.483$ S/m; $\epsilon_r = 51.295$; $\rho = 1000$ kg/m³

DASY5 Configuration:

- Area Scan Setting: Find Secondary Maximum Within: 2.0 dB and with a peak SAR value greater than 0.0012W/kg
- Electronics: DAE4 Sn1359; Calibrated: 2/9/2018
- Probe: EX3DV4 - SN7463; ConvF(7.85, 7.85, 7.85); Calibrated: 7/20/2018, ConvF(7.85, 7.85, 7.85); Calibrated: 7/20/2018;
- Sensor-Surface: 2.5mm (Mechanical Surface Detection)
- Phantom: ELI V5.0 Slot 1/2; Type: QD OVA 002 Ax; Serial: 1119

Body/Pin=100 mW/Area Scan (7x7x1): Measurement grid: dx=15mm, dy=15mm

Maximum value of SAR (measured) = 4.97 W/kg

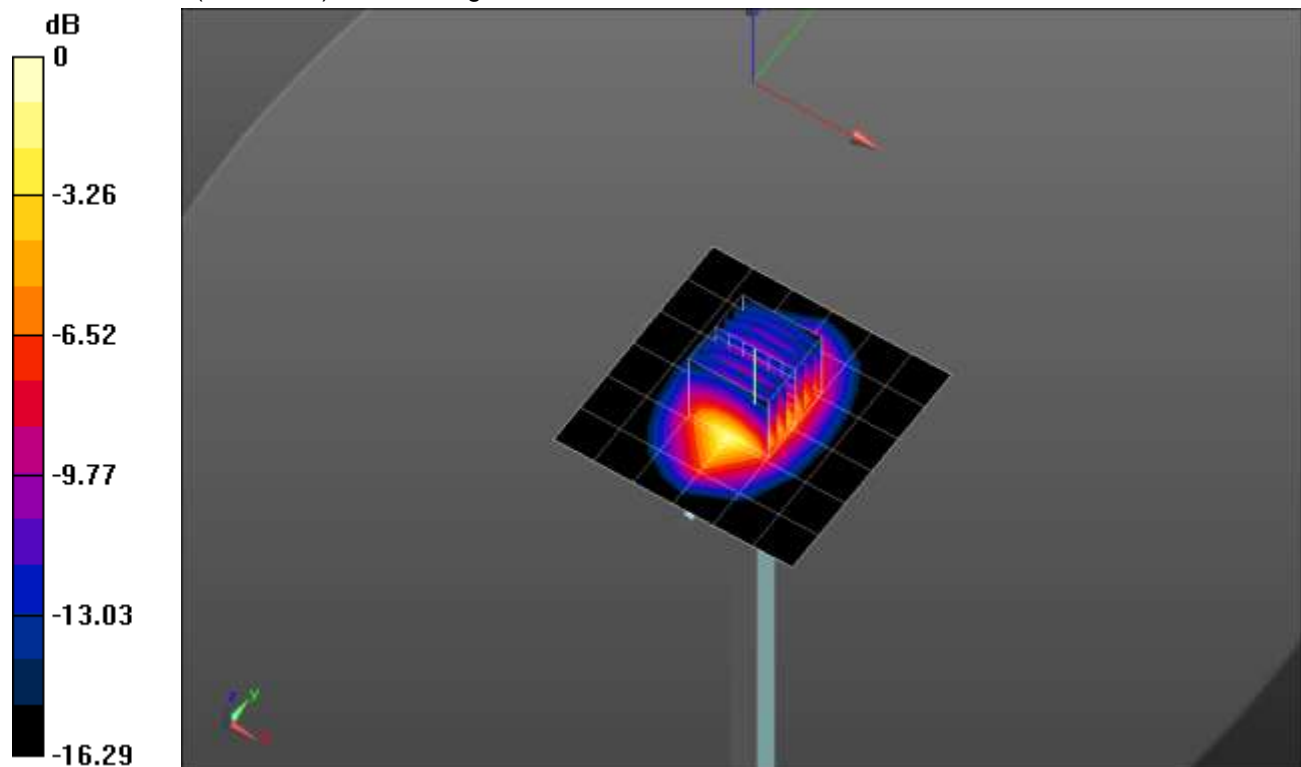
Body/Pin=100 mW/Zoom Scan (7x7x7)/Cube 0: Measurement grid: dx=5mm, dy=5mm, dz=5mm

Reference Value = 58.23 V/m; Power Drift = -0.02 dB

Peak SAR (extrapolated) = 6.64 W/kg

SAR(1 g) = 3.7 W/kg; SAR(10 g) = 1.97 W/kg

Maximum value of SAR (measured) = 4.97 W/kg



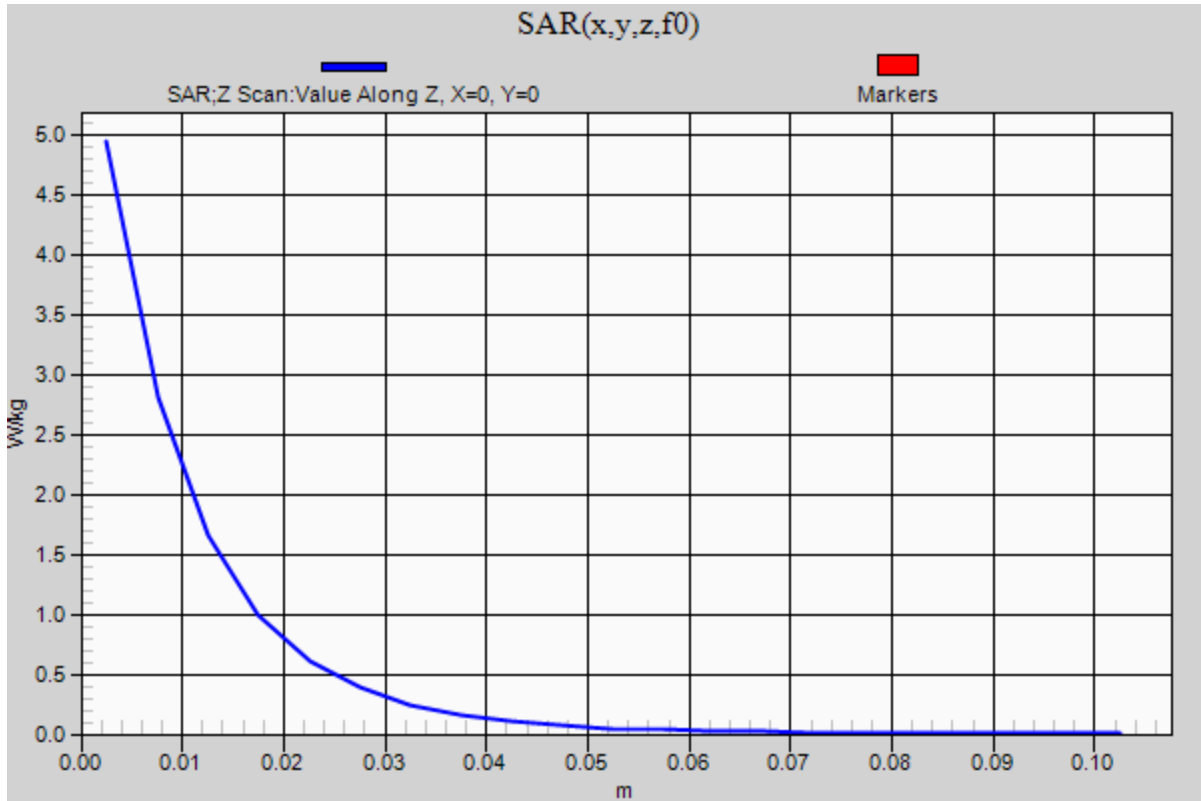
0 dB = 4.97 W/kg = 6.96 dBW/kg

20181203_SystemPerformanceCheck-D1750V2 SN 1077

Frequency: 1750 MHz; Duty Cycle: 1:1

Body/Pin=100 mW/Z Scan (1x1x21): Measurement grid: dx=20mm, dy=20mm, dz=5mm

Maximum value of SAR (measured) = 4.95 W/kg



20181203_SystemPerformanceCheck-D2300V2 SN 1058

Frequency: 2300 MHz; Duty Cycle: 1:1; Room Ambient Temperature: 24.0°C; Liquid Temperature: 23.0°C
 Medium parameters used: $f = 2300 \text{ MHz}$; $\sigma = 1.862 \text{ S/m}$; $\epsilon_r = 51.279$; $\rho = 1000 \text{ kg/m}^3$

DASY5 Configuration:

- Area Scan Setting: Find Secondary Maximum Within: 2.0 dB and with a peak SAR value greater than 0.0012W/kg
- Electronics: DAE4 Sn1359; Calibrated: 2/9/2018
- Probe: EX3DV4 - SN7463; ConvF(7.25, 7.25, 7.25); Calibrated: 7/20/2018, ConvF(7.25, 7.25, 7.25); Calibrated: 7/20/2018;
- Sensor-Surface: 2.5mm (Mechanical Surface Detection)
- Phantom: ELI V5.0 Slot 1/2; Type: QD OVA 002 Ax; Serial: 1119

Body/Pin=100 mW/Area Scan (8x8x1): Measurement grid: dx=12mm, dy=12mm

Maximum value of SAR (measured) = 5.04 W/kg

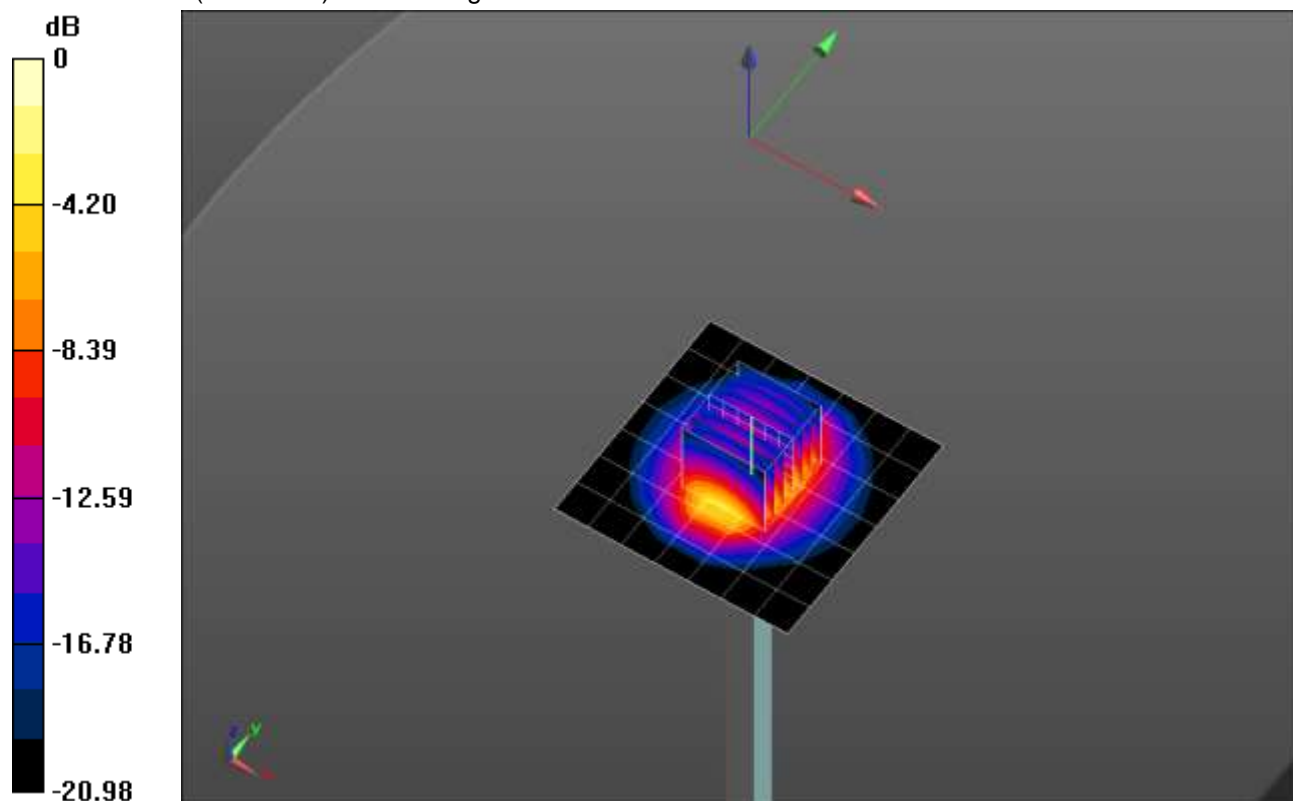
Body/Pin=100 mW/Zoom Scan (7x7x7)/Cube 0: Measurement grid: dx=5mm, dy=5mm, dz=5mm

Reference Value = 62.22 V/m; Power Drift = -0.10 dB

Peak SAR (extrapolated) = 9.83 W/kg

SAR(1 g) = 4.91 W/kg; SAR(10 g) = 2.32 W/kg

Maximum value of SAR (measured) = 6.92 W/kg

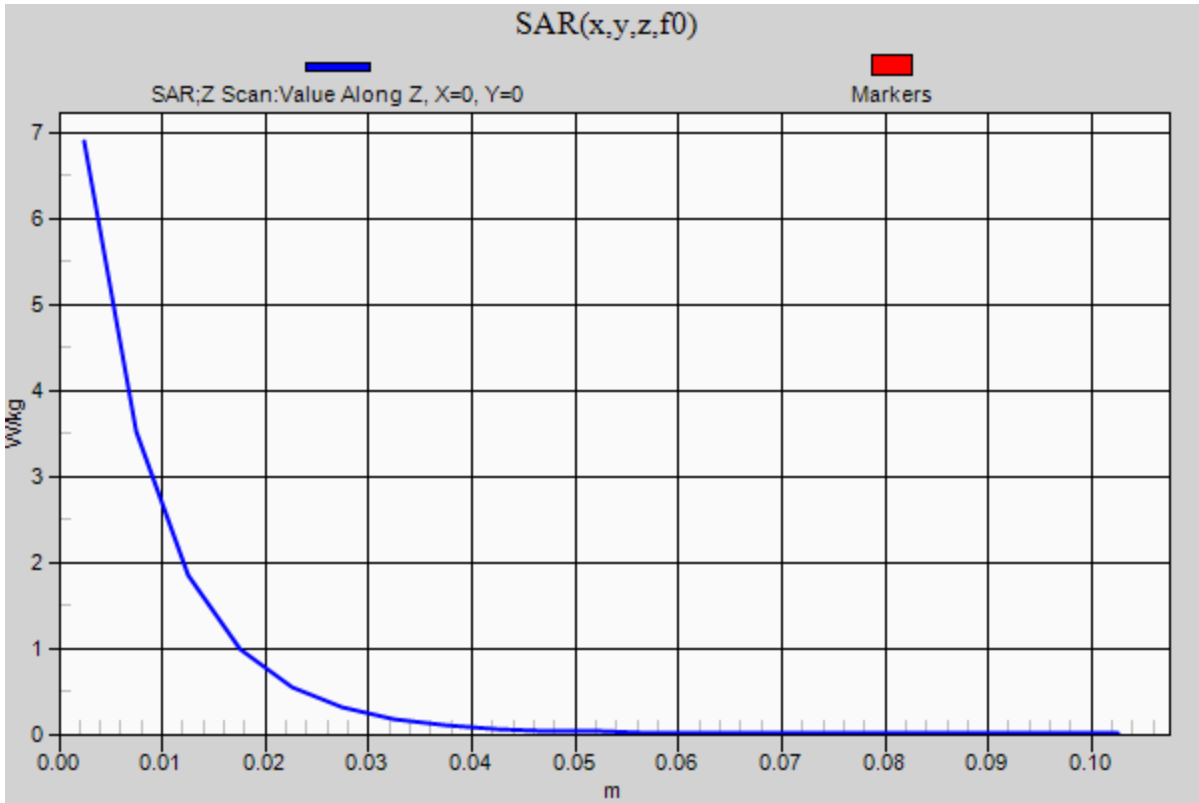


0 dB = 6.92 W/kg = 8.40 dBW/kg

20181203_SystemPerformanceCheck-D2300V2 SN 1058

Frequency: 2300 MHz; Duty Cycle: 1:1

Body/Pin=100 mW/Z Scan (1x1x21): Measurement grid: dx=20mm, dy=20mm, dz=5mm
Maximum value of SAR (measured) = 6.90 W/kg



20181203_SystemPerformanceCheck-D2450V2 SN 899

Frequency: 2450 MHz; Duty Cycle: 1:1; Room Ambient Temperature: 24.0°C; Liquid Temperature: 23.0°C

Medium parameters used: $f = 2450$ MHz; $\sigma = 1.995$ S/m; $\epsilon_r = 51.058$; $\rho = 1000$ kg/m³

DASY5 Configuration:

- Area Scan Setting: Find Secondary Maximum Within: 2.0 dB and with a peak SAR value greater than 0.0012W/kg
- Electronics: DAE4 Sn1359; Calibrated: 2/9/2018
- Probe: EX3DV4 - SN7463; ConvF(7.25, 7.25, 7.25); Calibrated: 7/20/2018, ConvF(7.25, 7.25, 7.25); Calibrated: 7/20/2018;
- Sensor-Surface: 2.5mm (Mechanical Surface Detection)
- Phantom: ELI V5.0 Slot 1/2; Type: QD OVA 002 Ax; Serial: 1119

Body/Pin=100 mW/Area Scan (8x8x1): Measurement grid: dx=12mm, dy=12mm

Maximum value of SAR (measured) = 5.51 W/kg

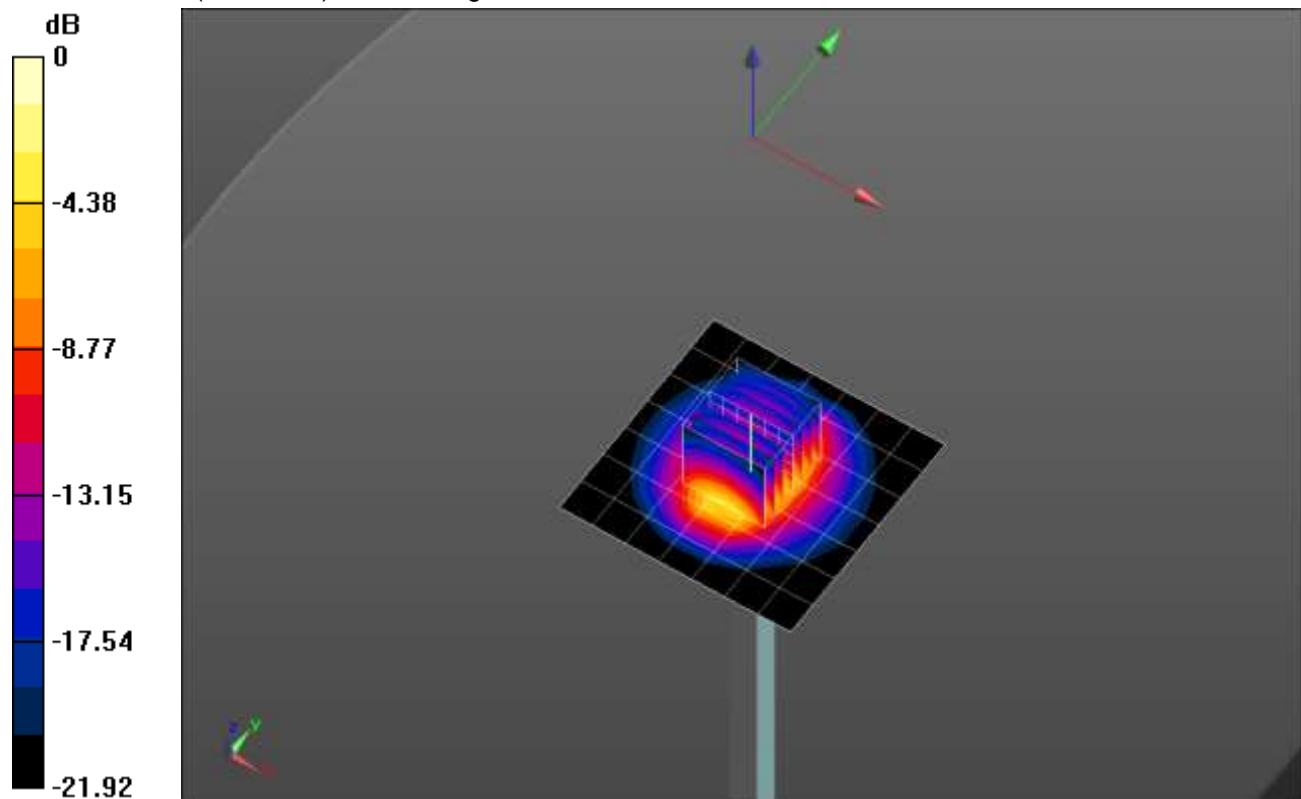
Body/Pin=100 mW/Zoom Scan (7x7x7)/Cube 0: Measurement grid: dx=5mm, dy=5mm, dz=5mm

Reference Value = 61.43 V/m; Power Drift = 0.07 dB

Peak SAR (extrapolated) = 10.9 W/kg

SAR(1 g) = 5.29 W/kg; SAR(10 g) = 2.44 W/kg

Maximum value of SAR (measured) = 7.54 W/kg

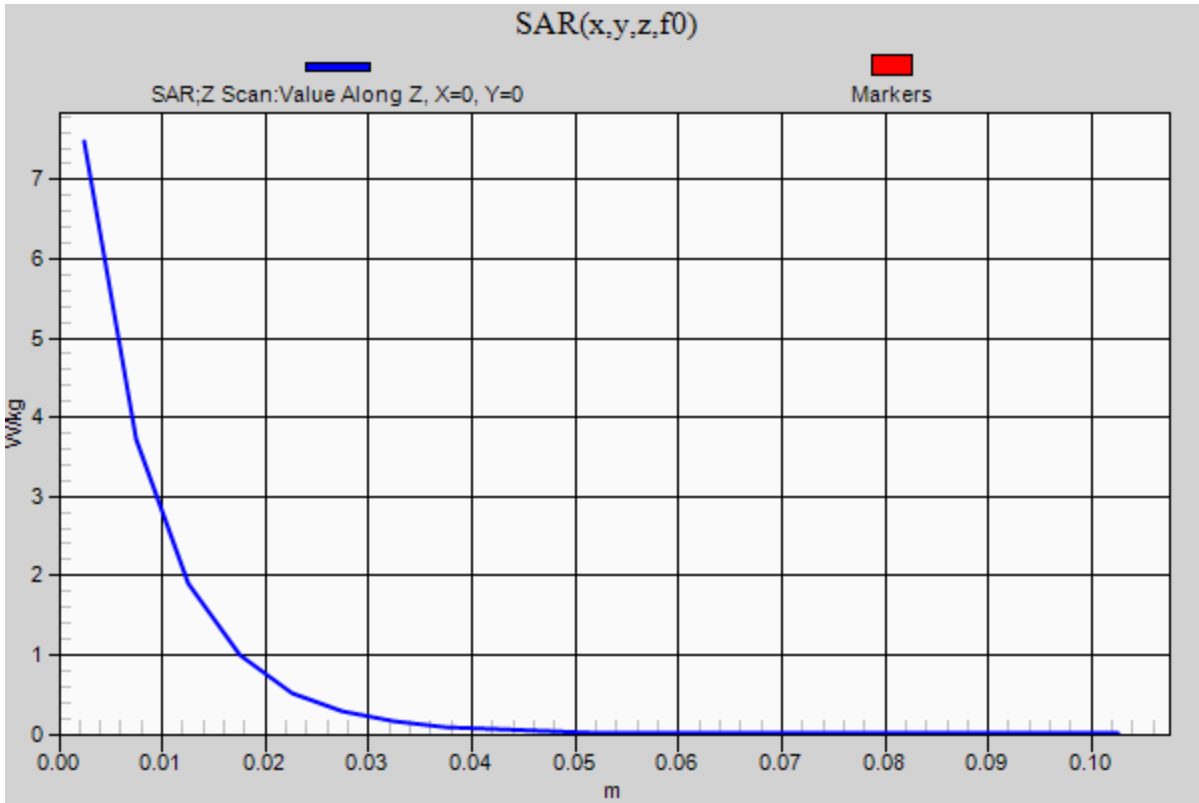


0 dB = 7.54 W/kg = 8.77 dBW/kg

20181203_SystemPerformanceCheck-D2450V2 SN 899

Frequency: 2450 MHz; Duty Cycle: 1:1

Body/Pin=100 mW/Z Scan (1x1x21): Measurement grid: dx=20mm, dy=20mm, dz=5mm
Maximum value of SAR (measured) = 7.48 W/kg



20181204_SystemPerformanceCheck-D5GHzV2 SN 1138

Frequency: 5600 MHz; Duty Cycle: 1:1; Room Ambient Temperature: 24.0°C; Liquid Temperature: 23.0°C

Medium parameters used: $f = 5600$ MHz; $\sigma = 5.873$ S/m; $\epsilon_r = 46.546$; $\rho = 1000$ kg/m³

DASY5 Configuration:

- Area Scan Setting: Find Secondary Maximum Within: 2.0 dB and with a peak SAR value greater than 0.0012W/kg
- Electronics: DAE4 Sn1359; Calibrated: 2/9/2018
- Probe: EX3DV4 - SN7463; ConvF(3.9, 3.9, 3.9); Calibrated: 7/20/2018, ConvF(3.9, 3.9, 3.9); Calibrated: 7/20/2018;
- Sensor-Surface: 1.4mm (Mechanical Surface Detection)
- Phantom: ELI V5.0 Slot 1/2; Type: QD OVA 002 Ax; Serial: 1119

Body/5.6 GHz, Pin=100mW/Area Scan (7x7x1): Measurement grid: dx=10mm, dy=10mm

Maximum value of SAR (measured) = 20.2 W/kg

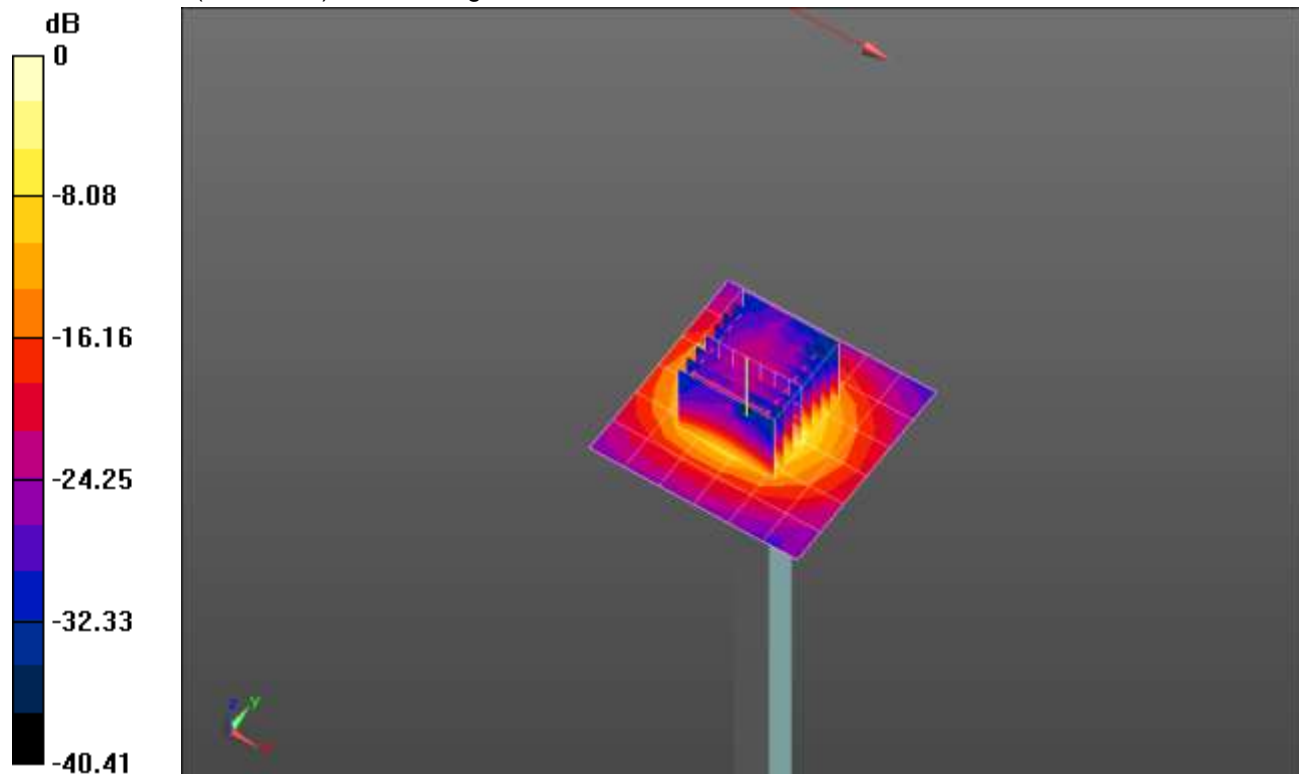
Body/5.6 GHz, Pin=100mW/Zoom Scan (8x8x7)/Cube 0: Measurement grid: dx=4mm, dy=4mm, dz=1.4mm

Reference Value = 51.70 V/m; Power Drift = 0.15 dB

Peak SAR (extrapolated) = 37.6 W/kg

SAR(1 g) = 8.38 W/kg; SAR(10 g) = 2.39 W/kg

Maximum value of SAR (measured) = 20.5 W/kg

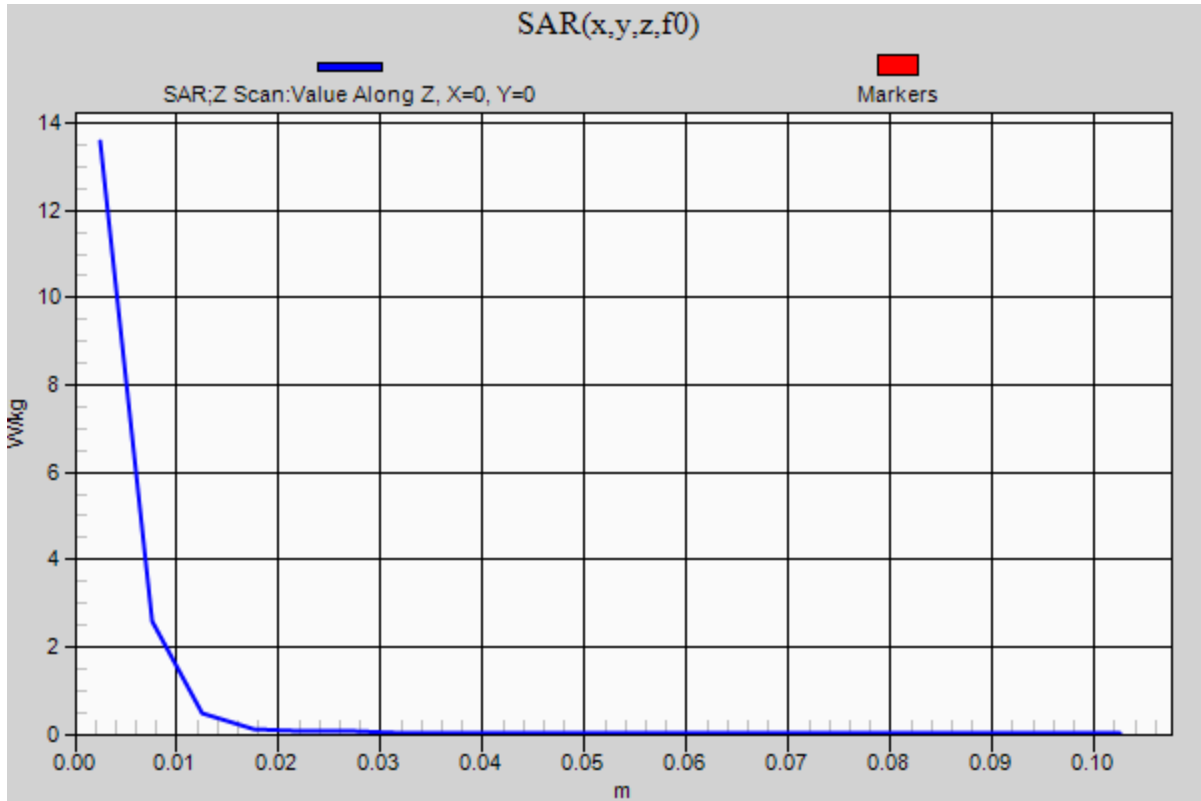


0 dB = 20.5 W/kg = 13.12 dBW/kg

20181204_SystemPerformanceCheck-D5GHzV2 SN 1138

Frequency: 5600 MHz; Duty Cycle: 1:1

Body/5.6 GHz, Pin=100mW/Z Scan (1x1x21): Measurement grid: dx=20mm, dy=20mm, dz=5mm
Maximum value of SAR (measured) = 13.6 W/kg



20181206_SystemPerformanceCheck-D1750V2 SN 1050

Frequency: 1750 MHz; Duty Cycle: 1:1; Room Ambient Temperature: 24.0°C; Liquid Temperature: 23.0°C

Medium parameters used: $f = 1750$ MHz; $\sigma = 1.51$ S/m; $\epsilon_r = 51.408$; $\rho = 1000$ kg/m³

DASY5 Configuration:

- Area Scan Setting: Find Secondary Maximum Within: 2.0 dB and with a peak SAR value greater than 0.0012W/kg
- Electronics: DAE4 Sn1359; Calibrated: 2/9/2018
- Probe: EX3DV4 - SN7463; ConvF(7.85, 7.85, 7.85); Calibrated: 7/20/2018, ConvF(7.85, 7.85, 7.85); Calibrated: 7/20/2018;
- Sensor-Surface: 2.5mm (Mechanical Surface Detection)
- Phantom: ELI V5.0 Slot 1/2; Type: QD OVA 002 Ax; Serial: 1119

Body/Pin=100 mW/Area Scan (7x7x1): Measurement grid: dx=15mm, dy=15mm

Maximum value of SAR (measured) = 4.56 W/kg

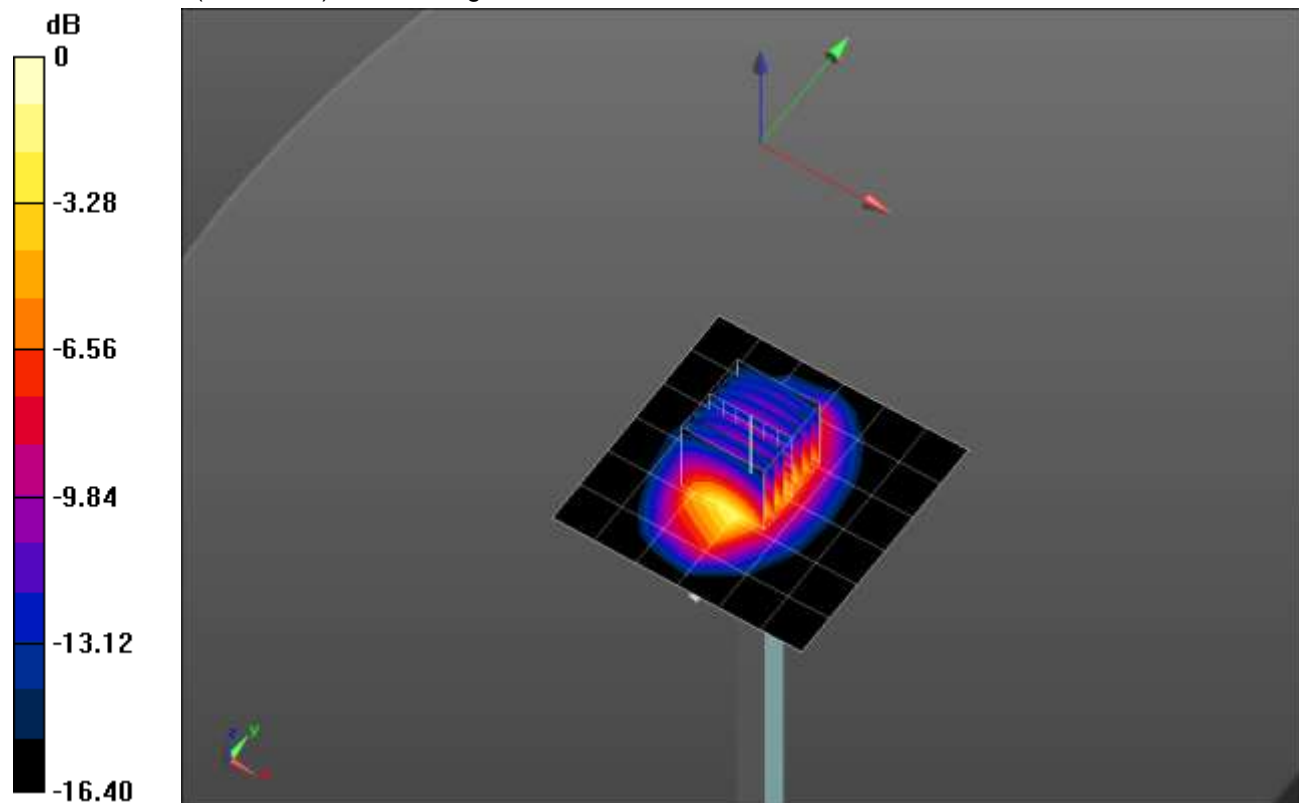
Body/Pin=100 mW/Zoom Scan (7x7x7)/Cube 0: Measurement grid: dx=5mm, dy=5mm, dz=5mm

Reference Value = 56.42 V/m; Power Drift = 0.10 dB

Peak SAR (extrapolated) = 6.80 W/kg

SAR(1 g) = 3.78 W/kg; SAR(10 g) = 2 W/kg

Maximum value of SAR (measured) = 5.04 W/kg

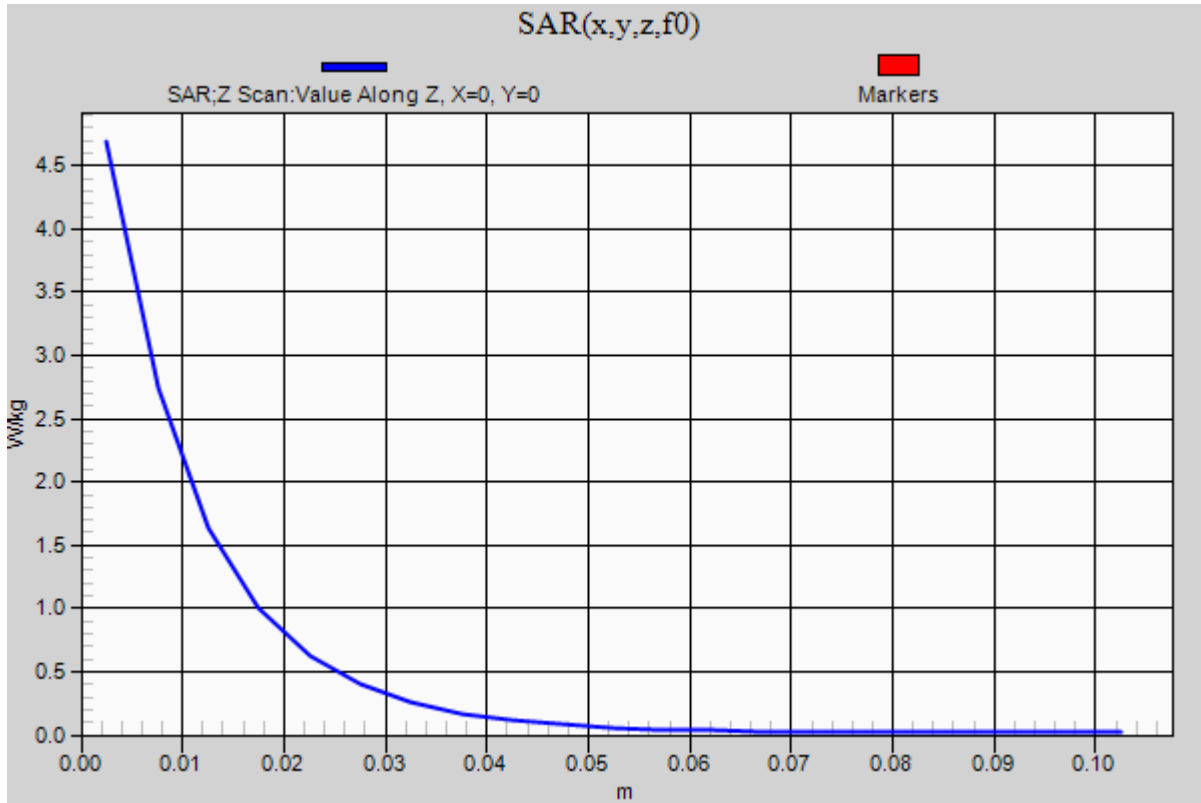


0 dB = 5.04 W/kg = 7.02 dBW/kg

20181206_SystemPerformanceCheck-D1750V2 SN 1050

Frequency: 1750 MHz; Duty Cycle: 1:1

Body/Pin=100 mW/Z Scan (1x1x21): Measurement grid: dx=20mm, dy=20mm, dz=5mm
Maximum value of SAR (measured) = 4.69 W/kg



20181206_SystemPerformanceCheck-D1900V2 SN 5d140

Frequency: 1900 MHz; Duty Cycle: 1:1; Room Ambient Temperature: 24.0°C; Liquid Temperature: 23.0°C

Medium parameters used: $f = 1900$ MHz; $\sigma = 1.579$ S/m; $\epsilon_r = 53.141$; $\rho = 1000$ kg/m³

DASY5 Configuration:

- Area Scan Setting: Find Secondary Maximum Within: 2.0 dB and with a peak SAR value greater than 0.0012W/kg
- Electronics: DAE4 Sn1359; Calibrated: 2/9/2018
- Probe: EX3DV4 - SN7463; ConvF(7.56, 7.56, 7.56); Calibrated: 7/20/2018, ConvF(7.56, 7.56, 7.56); Calibrated: 7/20/2018;
- Sensor-Surface: 2.5mm (Mechanical Surface Detection)
- Phantom: ELI V5.0 Slot 1/2; Type: QD OVA 002 Ax; Serial: 1119

Body/Pin=100 mW/Area Scan (7x7x1): Measurement grid: dx=15mm, dy=15mm

Maximum value of SAR (measured) = 5.89 W/kg

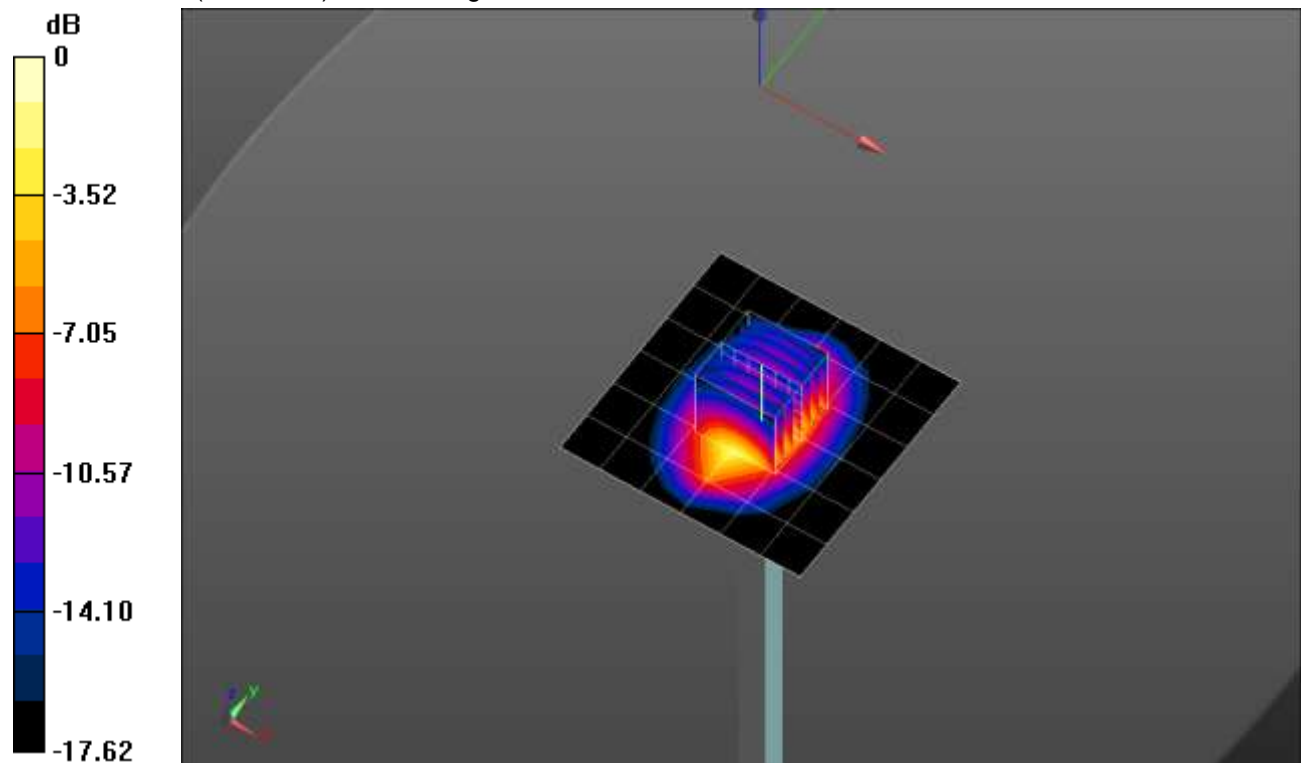
Body/Pin=100 mW/Zoom Scan (7x7x7)/Cube 0: Measurement grid: dx=5mm, dy=5mm, dz=5mm

Reference Value = 59.05 V/m; Power Drift = -0.18 dB

Peak SAR (extrapolated) = 8.10 W/kg

SAR(1 g) = 4.35 W/kg; SAR(10 g) = 2.22 W/kg

Maximum value of SAR (measured) = 5.90 W/kg



0 dB = 5.90 W/kg = 7.71 dBW/kg

20181206_SystemPerformanceCheck-D1900V2 SN 5d140

Frequency: 1900 MHz; Duty Cycle: 1:1

Body/Pin=100 mW/Z Scan (1x1x21): Measurement grid: dx=20mm, dy=20mm, dz=5mm
Maximum value of SAR (measured) = 5.42 W/kg

