

SAMSUNG

SM-T830

User Manual

Table of Contents

Basics

- 4 Read me first
- 6 Device overheating situations and solutions
- 9 Device layout and functions
- 15 Battery
- 18 Memory card (microSD card)
- 22 Turning the device on and off
- 23 Initial setup
- 25 Samsung account
- 27 Transferring data from your previous device
- 31 Understanding the screen
- 43 Notification panel
- 45 Entering text

Apps and features

- 48 Installing or uninstalling apps
- 50 S Pen features
- 61 Bixby
- 72 Contacts

- 75 Internet
- 77 Email
- 78 Camera
- 92 Gallery
- 99 Multi window
- 104 Samsung Members
- 105 Samsung Notes
- 111 PENUP
- 115 Calendar
- 117 Samsung Flow
- 118 My Files
- 119 Clock
- 120 Calculator
- 121 Game Launcher
- 124 SmartThings
- 128 Sharing content
- 129 Daily Board
- 131 Kids Mode
- 132 Samsung DeX
- 138 Connecting to an external display
- 139 Google apps

Settings

- 141 Introduction
- 141 Connections
 - 142 Wi-Fi
 - 144 Bluetooth
 - 146 More connection settings
- 147 Sounds and vibration
 - 148 Dolby Atmos (surround sound)
- 148 Notifications
- 149 Display
 - 150 Blue light filter
 - 150 Changing the screen mode or adjusting the display colour
 - 152 Screensaver
- 152 Wallpaper
- 153 Advanced features
- 154 Device maintenance
- 156 Apps
- 157 Lock screen
 - 157 Smart Lock
- 158 Biometrics and security
 - 159 Intelligent Scan
 - 162 Face recognition
 - 165 Iris recognition
 - 170 Samsung Pass
 - 173 Secure Folder

- 178 Cloud and accounts
 - 179 Users
- 180 Google
- 181 Accessibility
- 182 General management
- 183 Software update
- 184 User manual
- 184 About tablet

Appendix

- 185 Troubleshooting
- 191 Removing the battery

Basics

Read me first

Please read this manual before using the device to ensure safe and proper use.

- Descriptions are based on the device's default settings.
- Some content may differ from your device depending on the region, service provider, model specifications, or device's software.
- Content (high quality content) that requires high CPU and RAM usage will affect the overall performance of the device. Apps related to the content may not work properly depending on the device's specifications and the environment that it is used in.
- Samsung is not liable for performance issues caused by apps supplied by providers other than Samsung.
- Samsung is not liable for performance issues or incompatibilities caused by edited registry settings or modified operating system software. Attempting to customise the operating system may cause the device or apps to work improperly.
- Software, sound sources, wallpapers, images, and other media provided with this device are licensed for limited use. Extracting and using these materials for commercial or other purposes is an infringement of copyright laws. Users are entirely responsible for illegal use of media.
- Default apps that come with the device are subject to updates and may no longer be supported without prior notice. If you have questions about an app provided with the device, contact a Samsung Service Centre. For user-installed apps, contact service providers.
- Modifying the device's operating system or installing softwares from unofficial sources may result in device malfunctions and data corruption or loss. These actions are violations of your Samsung licence agreement and will void your warranty.

- Depending on the region or model, some devices are required to receive approval from the Federal Communications Commission (FCC). If your device is approved by the FCC, you can view the FCC ID of the device. To view the FCC ID, launch the **Settings** app and tap **About tablet** → **Status**.
- Depending on the region, you can view the regulatory information on the device. To view the information, launch the **Settings** app and tap **About tablet** → **Regulatory information**.

Instructional icons



Warning: situations that could cause injury to yourself or others



Caution: situations that could cause damage to your device or other equipment



Notice: notes, usage tips, or additional information

Device overheating situations and solutions

When the device heats up while charging the battery

While charging, the device and the charger may become hot. During wireless charging or fast charging, the device may feel hotter to the touch. This does not affect the device's lifespan or performance and is in the device's normal range of operation. If the battery becomes too hot, the charger may stop charging.

Do the following when the device heats up:

- Disconnect the charger from the device and close any running apps. Wait for the device to cool down and then begin charging the device again.
- If the lower part of the device overheats, it could be because the connected USB cable is damaged. Replace the damaged USB cable with a new Samsung-approved one.
- When using a wireless charger, do not place foreign materials, such as metal objects, magnets, and magnetic stripe cards, between the device and the wireless charger.



The wireless charging or fast charging feature is only available on supported models.

When the device heats up during use

When you use features or apps that require more power or use them for extended periods, your device may temporarily heat up due to increased battery consumption. Close any running apps and do not use the device for a while.

The following are examples of situations in which the device may overheat. Depending on the functions and apps you use, these examples may not apply to your model.

- During the initial setup after purchase or when restoring data
- When downloading large files

- When using apps that require more power or using apps for extended periods
 - When playing high-quality games for extended periods
 - When recording videos for extended periods
 - When streaming videos while using the maximum brightness setting
 - When connecting to a TV
- While multitasking (or, when running many apps in the background)
 - When using Multi window
 - When updating or installing apps while recording videos
 - When downloading large files during a video call
 - When recording videos while using a navigation app
- When using large amount of data for syncing with the cloud, email, or other accounts
- When using a navigation app in a car while the device is placed in direct sunlight
- When using the mobile hotspot and tethering feature
- When using the device in areas with weak signals or no reception
- When charging the battery with a damaged USB cable
- When the device's multipurpose jack is damaged or exposed to foreign materials, such as liquid, dust, metal powder, and pencil lead
- When you are roaming

Do the following when the device heats up:

- Keep the device updated with the latest software.
- Conflicts between running apps may cause the device to heat up. Restart the device.
- Deactivate the Wi-Fi, GPS, and Bluetooth features when not using them.
- Close apps that increase battery consumption or that run in the background when not in use.
- Delete unnecessary files or unused apps.
- Decrease the screen brightness.
- If the device overheats or feels hot for a prolonged period, do not use it for a while. If the device continues to overheat, contact a Samsung Service Centre.

Device limitations when the device overheats

When the device heats up, the features and performance may be limited or the device may turn off to cool down. The feature is only available on supported models.

- If the device becomes hotter than usual, a device overheating message will appear. To lower the device's temperature, the screen brightness and the performance speed will be limited and battery charging will stop. Running apps will be closed and you will only be able to make emergency calls until the device cools down.
- If the device overheats or feels hot for a prolonged period, a power off message will appear. Turn off the device, and wait until it cools down.

Precautions for operating environment

Your device may heat up due to the environment in the following conditions. Use caution to avoid shortening the battery's lifespan, damaging the device, or causing a fire.

- Do not store your device in very cold or very hot temperatures.
- Do not expose your device to direct sunlight for extended periods.
- Do not use or store your device for extended periods in very hot areas, such as inside a car in the summertime.
- Do not place the device in any areas that may overheat, such as on an electric heating mat.
- Do not store your device near or in heaters, microwaves, hot cooking equipment, or high pressure containers.
- Never use a damaged charger or battery.

Device layout and functions

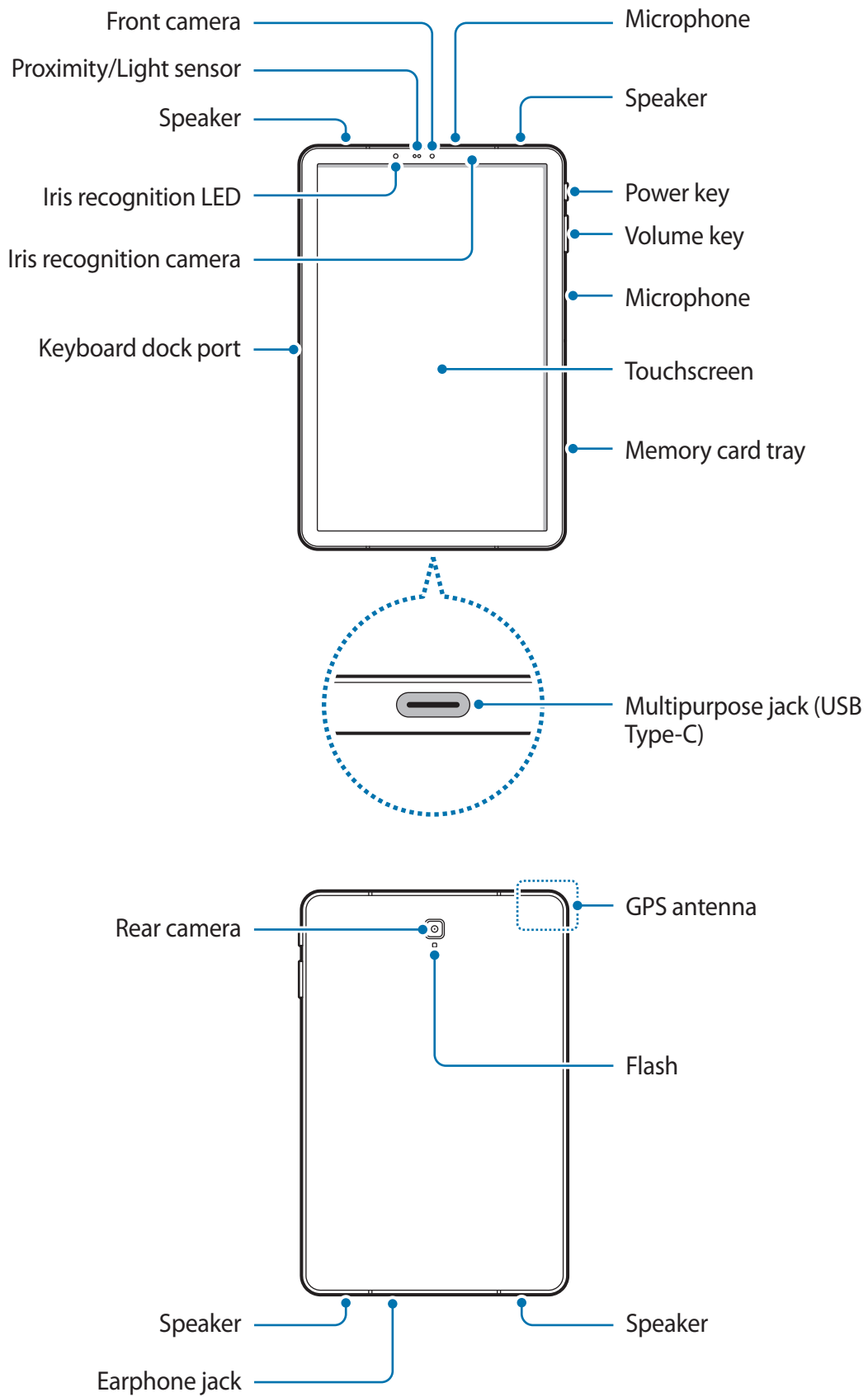
Package contents

Refer to the quick start guide for package contents.



- The items supplied with the device and any available accessories may vary depending on the region or service provider.
- The supplied items are designed only for this device and may not be compatible with other devices.
- Appearances and specifications are subject to change without prior notice.
- You can purchase additional accessories from your local Samsung retailer. Make sure they are compatible with the device before purchase.
- Use only Samsung-approved accessories. Using unapproved accessories may cause the performance problems and malfunctions that are not covered by the warranty.
- Availability of all accessories is subject to change depending entirely on manufacturing companies. For more information about available accessories, refer to the Samsung website.

Device layout





The device and some accessories (sold separately) contain magnets. The American Heart Association (US) and the Medicines and Healthcare Products Regulatory Agency (UK) both warn that magnets can affect the operation of implanted pacemakers, cardioverters, defibrillators, insulin pumps or other electro medical devices (collectively, “Medical Device”) within the range of 15 cm (6 inches). If you are a user of any of these Medical Devices, **DO NOT USE THIS DEVICE AND SOME ACCESSORIES (SOLD SEPARATELY) UNLESS YOU HAVE CONSULTED WITH YOUR PHYSICIAN.**

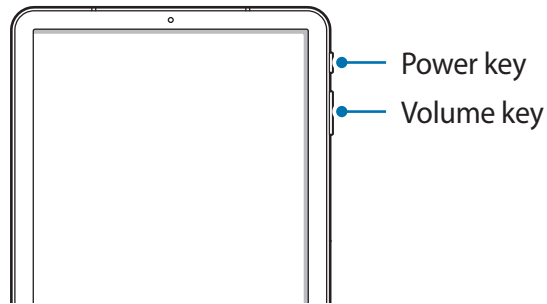


- Do not store your device and some accessories (sold separately) near magnetic fields. Magnetic stripe cards, including credit cards, phone cards, passbooks, and boarding passes, may be damaged by magnetic fields.
- When using the speakers, such as when playing media files or using speakerphone, do not place the device close to your ears.



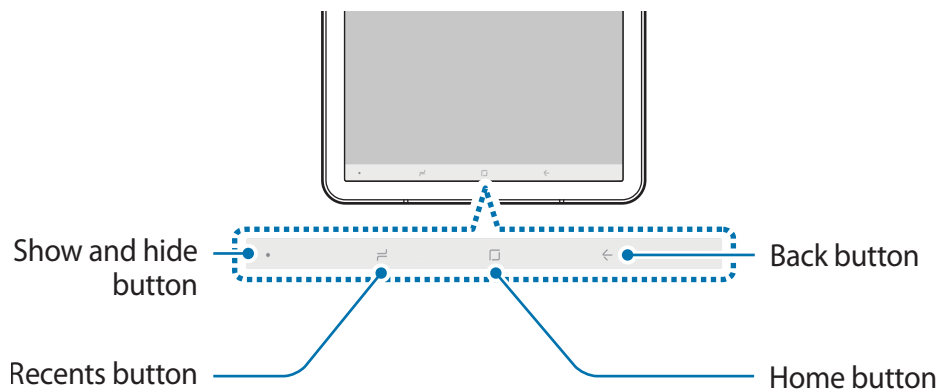
- Connectivity problems and battery drain may occur in the following situations:
 - If you attach metallic stickers on the antenna area of the device
 - If you attach a device cover made with metallic material to the device
- Using a Samsung-approved screen protector is recommended. Unapproved screen protectors may cause the sensors to malfunction.
- Do not cover the proximity/light sensor area with screen accessories, such as a screen protector or stickers. Doing so may cause the sensor to malfunction.
- Do not allow water to contact the touchscreen. The touchscreen may malfunction in humid conditions or when exposed to water.

Hard keys



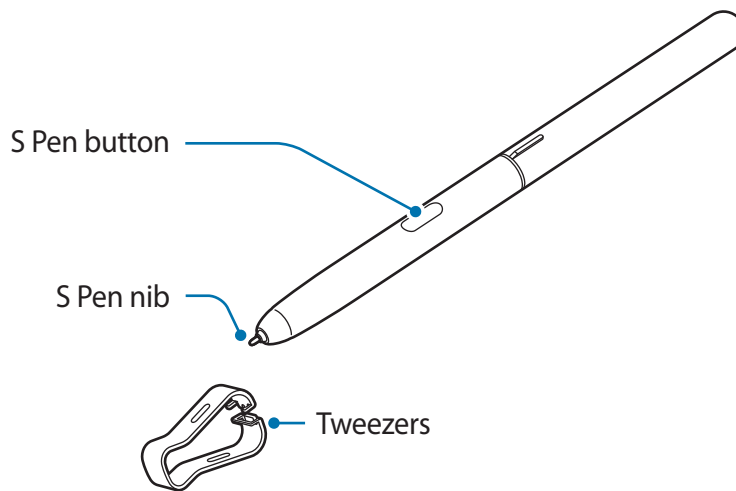
Key	Function
Power	<ul style="list-style-type: none"> • Press and hold to turn the device on or off. • Press to turn on or lock the screen.
Volume	<ul style="list-style-type: none"> • Press to adjust the device volume.

Soft buttons



When you turn on the device, the soft buttons will appear at the bottom of the screen. The soft buttons are set to the Recents button, Home button, and Back button by default. Refer to [Navigation bar \(soft buttons\)](#) for more information.

S Pen

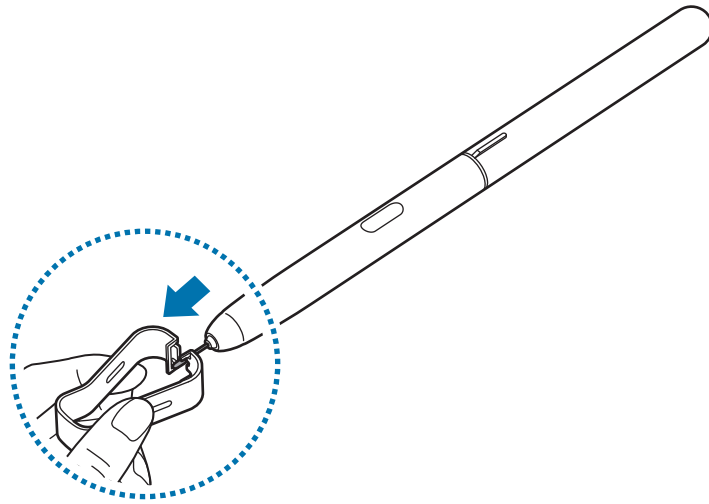


Name	Functions
S Pen nib	<ul style="list-style-type: none"> • Use the S Pen to write, draw, or perform touch actions on the screen. • Hover the S Pen over items on the screen to access additional S Pen features, such as the Air view feature.
S Pen button	<ul style="list-style-type: none"> • Hover the S Pen over the screen and press the S Pen button to display the Air command features. • While pressing and holding the S Pen button, drag the S Pen over items to select them.
Tweezers	<ul style="list-style-type: none"> • Remove the S Pen nib with the tweezers when replacing the nib.

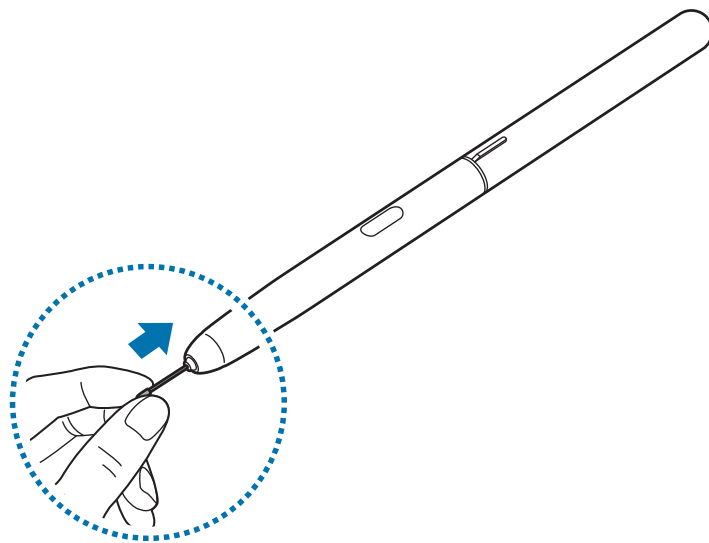
Replacing the S Pen nib

If the nib is dull, replace it with a new one.

- 1 Firmly hold the nib with the tweezers and remove it.



- 2 Insert a new nib into the S Pen.





Be careful not to pinch your fingers with the tweezers.



- Do not reuse old nibs. Doing so may cause the S Pen to malfunction.
- Do not press the nib excessively when inserting the nib into the S Pen.
- Do not insert the round end of the nib into the S Pen. Doing so may cause damage to the S Pen or your device.
- Do not bend or apply excessive pressure with the S Pen while using it. The S Pen may be damaged or the nib may be deformed.
- Do not hard press on the screen with the S Pen. The pen nib may be deformed.



- If you use the S Pen at sharp angles on the screen, the device may not recognise the S Pen actions.
- For more information about the S Pen, visit the Samsung website.
- If the S Pen is not working properly, take it to a Samsung Service Centre.

Battery

Charging the battery

Charge the battery before using it for the first time or when it has been unused for extended periods.



Use only Samsung-approved chargers, batteries, and cables. Unapproved chargers or cables can cause the battery to explode or damage the device.

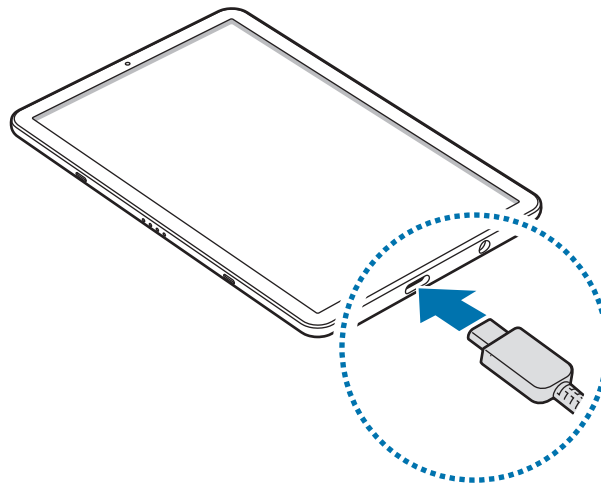


- Connecting the charger improperly may cause serious damage to the device. Any damage caused by misuse is not covered by the warranty.
- Use only USB Type-C cable supplied with the device. The device may be damaged if you use Micro USB cable.



To save energy, unplug the charger when not in use. The charger does not have a power switch, so you must unplug the charger from the electric socket when not in use to avoid wasting power. The charger should remain close to the electric socket and easily accessible while charging.

- 1 Connect the USB cable to the USB power adaptor.
- 2 Plug the USB cable into the device's multipurpose jack.



- 3 Plug the USB power adaptor into an electric socket.
- 4 After fully charging, disconnect the charger from the device. Then, unplug the charger from the electric socket.

Reducing the battery consumption

Your device provides various options that help you conserve battery power.

- Optimise the device using the device maintenance feature.
- When you are not using the device, turn off the screen by pressing the Power key.
- Activate power saving mode.
- Close unnecessary apps.
- Deactivate the Bluetooth feature when not in use.
- Deactivate the Wi-Fi feature when not in use.
- Deactivate auto-syncing of apps that need to be synced.
- Decrease the backlight time.
- Decrease the screen brightness.

Battery charging tips and precautions


- When the battery power is low, the battery icon appears empty.
- If the battery is completely discharged, the device cannot be turned on immediately when the charger is connected. Allow a depleted battery to charge for a few minutes before turning on the device.
- If you use multiple apps at once, network apps, or apps that need a connection to another device, the battery will drain quickly. To avoid losing power during a data transfer, always use these apps after fully charging the battery.
- Using a power source other than the charger, such as a computer, may result in a slower charging speed due to a lower electric current.
- The device can be used while it is charging, but it may take longer to fully charge the battery.
- If the device receives an unstable power supply while charging, the touchscreen may not function. If this happens, unplug the charger from the device.
- While charging, the device and the charger may heat up. This is normal and should not affect the device's lifespan or performance. If the battery gets hotter than usual, the charger may stop charging.
- If you charge the device while the multipurpose jack is wet, the device may be damaged. Thoroughly dry the multipurpose jack before charging the device.
- If the device is not charging properly, take the device and the charger to a Samsung Service Centre.

Fast charging

The device has a built-in fast charging feature. You can charge the battery more quickly while the device or its screen is turned off.

Increasing the charging speed

To increase the charging speed, turn the device or its screen off when you charge the battery. While charging the battery when the device is turned off, the ⚡ icon appears on the screen.

If the fast charging feature is not activated, launch the **Settings** app, tap **Device maintenance** → **Battery** →  → **Advanced settings**, and then tap the **Fast cable charging** switch to activate it.



- You cannot use the built-in fast charging feature when you charge the battery using a standard battery charger.
- If the device heats up or the ambient air temperature rises, the charging speed may decrease automatically. This is a normal operating condition to prevent damage to the device.

Memory card (microSD card)

Installing a memory card

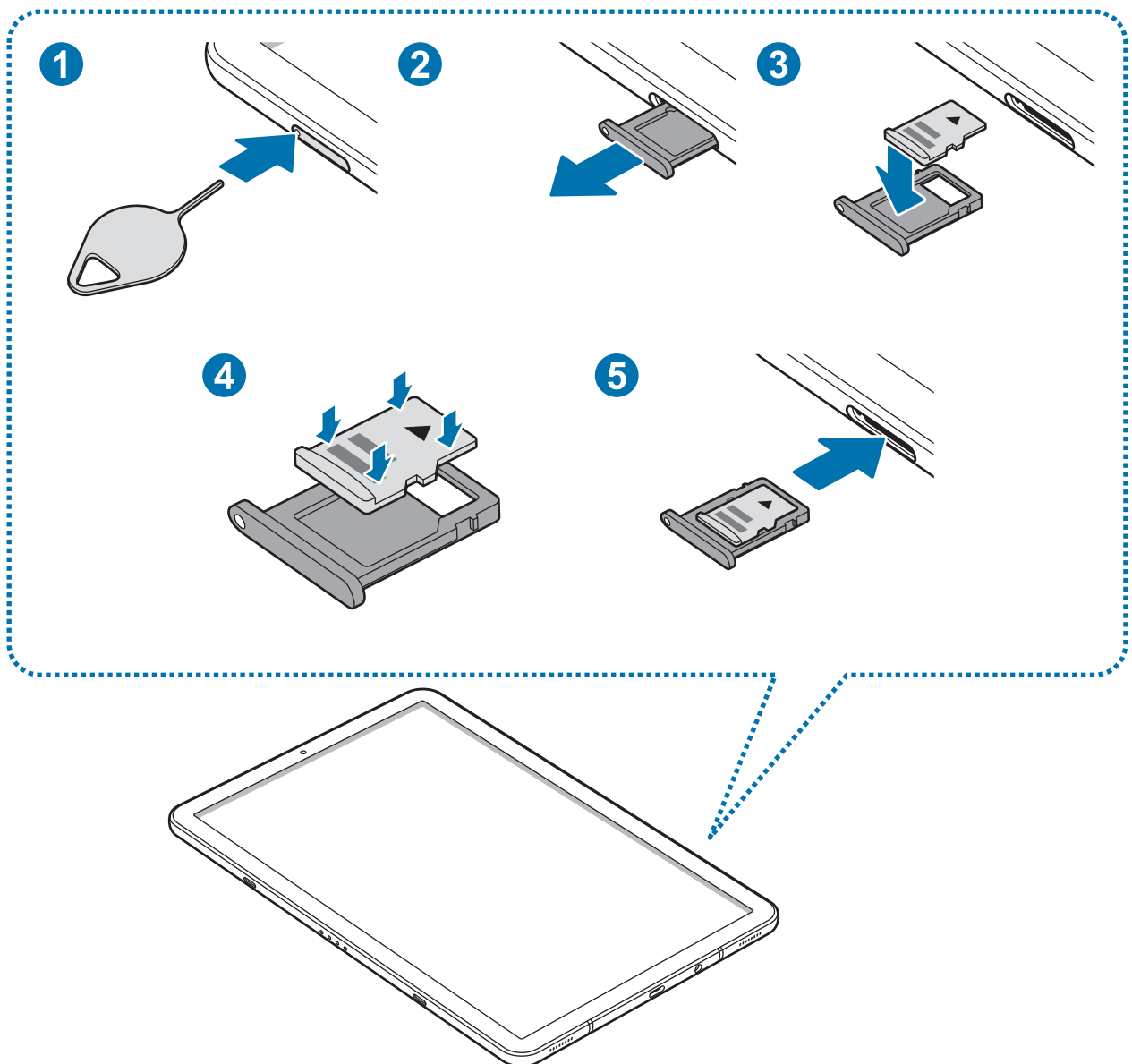
Your device's memory card capacity may vary from other models and some memory cards may not be compatible with your device depending on the memory card manufacturer and type. To view your device's maximum memory card capacity, refer to the Samsung website.




- Some memory cards may not be fully compatible with the device. Using an incompatible card may damage the device or the memory card, or corrupt the data stored in it.
- Use caution to insert the memory card right-side up.



- The device supports the FAT and the exFAT file systems for memory cards. When inserting a card formatted in a different file system, the device will ask to reformat the card or will not recognise the card. To use the memory card, you must format it. If your device cannot format or recognise the memory card, contact the memory card manufacturer or a Samsung Service Centre.
- Frequent writing and erasing of data shortens the lifespan of memory cards.
- When inserting a memory card into the device, the memory card's file directory appears in the **My Files** → **SD card** folder.

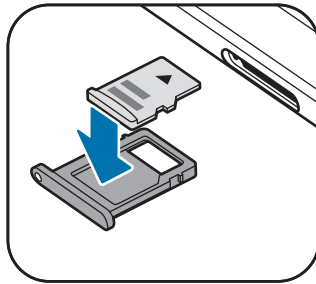


1 Insert the ejection pin into the hole on the memory card tray to loosen the tray.


 Ensure that the ejection pin is perpendicular to the hole. Otherwise, the device may be damaged.

2 Pull out the memory card tray gently from the memory card tray slot.


3 Place a memory card on the memory card tray with the gold-coloured contacts facing downwards.



4 Gently press the memory card into the tray to secure it.

 If the card is not fixed firmly into the tray, the memory card may leave or fall out of the tray.

5 Insert the memory card tray back into the memory card tray slot.

-  • If you insert the tray into your device while the tray is wet, your device may be damaged. Always make sure the tray is dry.
- Fully insert the tray into the tray slot to prevent liquid from entering your device.

Removing the memory card

Before removing the memory card, first unmount it for safe removal.

Launch the **Settings** app and tap **Device maintenance** → **Storage** →  → **Storage settings** → **SD card** → **UNMOUNT**.

- 1 Insert the ejection pin into the hole on the memory card tray to loosen the tray.
- 2 Pull out the memory card tray gently from the memory card tray slot.
- 3 Remove the memory card.
- 4 Insert the memory card tray back into the memory card tray slot.



Do not remove external storage, such as a memory card or USB storage, while the device is transferring or accessing information, or right after transferring data. Doing so can cause data to be corrupted or lost or cause damage to the external storage or device. Samsung is not responsible for losses, including loss of data, resulting from the misuse of external storage devices.

Formatting the memory card

A memory card formatted on a computer may not be compatible with the device. Format the memory card on the device.

Launch the **Settings** app and tap **Device maintenance** → **Storage** →  → **Storage settings** → **SD card** → **Format**.



Before formatting the memory card, remember to make backup copies of all important data stored in the memory card. The manufacturer's warranty does not cover loss of data resulting from user actions.

Turning the device on and off

Press and hold the Power key for a few seconds to turn on the device.

When you turn on your device for the first time or after performing a data reset, follow the on-screen instructions to set up your device.

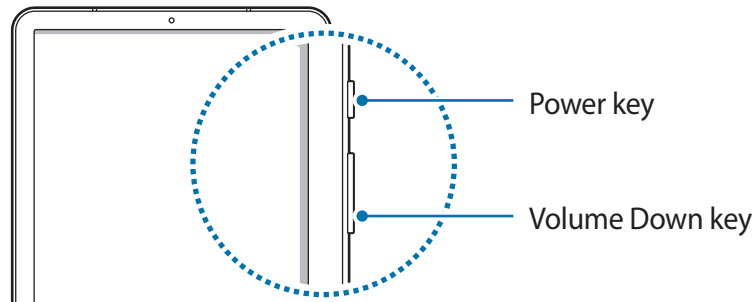
To turn off the device, press and hold the Power key, and then tap **Power off**.



Follow all posted warnings and directions from authorised personnel in areas where the use of wireless devices is restricted, such as aeroplanes and hospitals.

Restarting the device


If your device is frozen and unresponsive, press and hold the Power key and the Volume Down key simultaneously for more than 7 seconds to restart it.

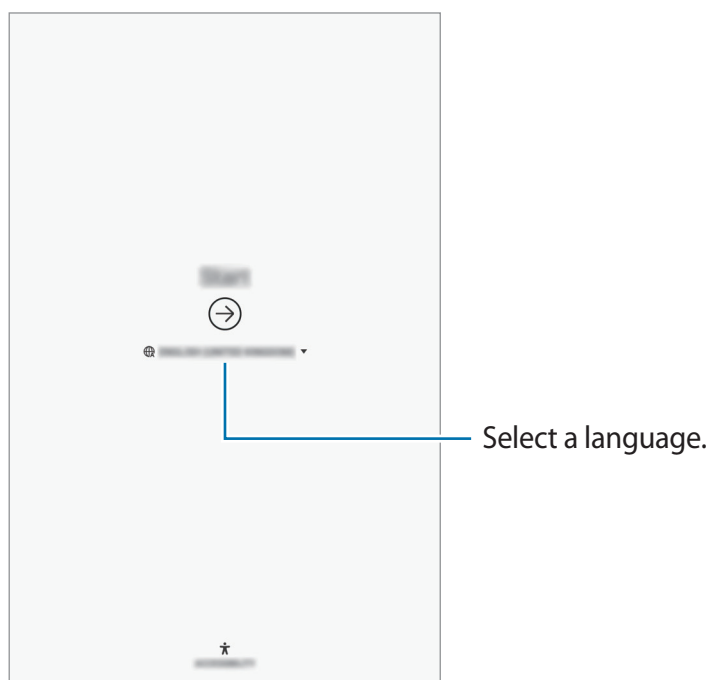


Initial setup


When you turn on your device for the first time or after performing a data reset, follow the on-screen instructions to set up your device.

 The initial setup procedures may vary depending on the device's software and your region.

- 1 Turn on the device.
- 2 Select your preferred device language and select .

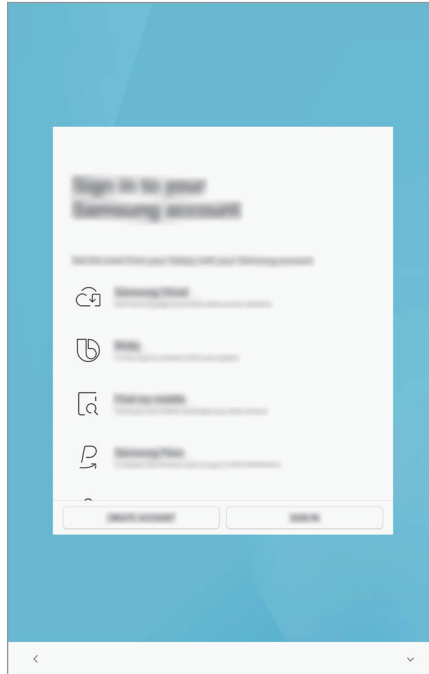


- 3 Select a Wi-Fi network and connect to it.

 If you do not connect to a Wi-Fi network, you may not be able to set up some device features during the initial setup.

- 4 Follow the on-screen instructions to proceed the initial setup.
- 5 Set a screen lock method to protect your device. You can protect your personal information by preventing others from accessing your device. To set the screen lock method later, tap **No, thank you**.

- 6 Sign in to your Samsung account. You can enjoy Samsung services and keep your data up to date and secure across all of your devices. Refer to [Samsung account](#) for more information.




- 7 Select features you want to use and complete the initial setup. The Home screen will appear.

Samsung account

Introduction

Your Samsung account is an integrated account service that allows you to use a variety of Samsung services provided by mobile devices, TVs, and the Samsung website. Once your Samsung account has been registered, you can keep your data up to date and secure across your Samsung devices with Samsung Cloud, track and control your lost or stolen device, see tips and tricks from Samsung Members, and more.

Create your Samsung account with your email address.

To check the list of services that can be used with your Samsung account, visit account.samsung.com. For more information on Samsung accounts, launch the **Settings** app and tap **Cloud and accounts** → **Accounts** → **Samsung account** →  → **Help**.

Registering your Samsung account

Registering a new Samsung account

If you do not have a Samsung account, you should create one.

- 1 Launch the **Settings** app and tap **Cloud and accounts** → **Accounts** → **Add account**.
- 2 Tap **Samsung account** → **CREATE ACCOUNT**.
- 3 Follow the on-screen instructions to complete creating your account.

Registering an existing Samsung account

If you already have a Samsung account, register it to the device.

1 Launch the **Settings** app and tap **Cloud and accounts** → **Accounts** → **Add account**.

2 Tap **Samsung account** → **SIGN IN**.

3 Enter your email address and password, and then tap **SIGN IN**.

If you forget your account information, tap **Find ID** or **Reset password**. You can find your account information when you enter the required information.

If you want to verify your Samsung account password via your biometric data, such as irises, tap **Verify identity with biometrics instead of password using Samsung Pass**. Refer to [Samsung Pass](#) for more information.

4 Read and agree to the terms and conditions and tap **AGREE**.

5 Tap **DONE** to finish registering your Samsung account.

Removing your Samsung account

When you remove your registered Samsung account from the device, your data, such as contacts or events, will also be removed.

1 Launch the **Settings** app and tap **Cloud and accounts** → **Accounts**.

2 Tap **Samsung account** →  → **Remove account**.

3 Tap **REMOVE**, enter your Samsung account password, and then tap **CONFIRM**.

Transferring data from your previous device

You can restore your data, such as images, contacts, messages, and apps from Samsung Cloud. You can also copy them from your previous device via Smart Switch.



- This feature may not be supported on some devices or computers.
- Limitations apply. Visit www.samsung.com/smartswitch for details. Samsung takes copyright seriously. Only transfer content that you own or have the right to transfer.

Smart Switch

Transfer data between mobile devices via Smart Switch. To use Smart Switch, launch the **Settings** app and tap **Cloud and accounts** → **Smart Switch**. If you do not have the app, download it from **Galaxy Apps** or **Play Store**.

Transferring data from a mobile device

Transfer data from your previous device to your device wirelessly via Wi-Fi Direct.



- 1 On the previous device, launch Smart Switch.
If you do not have the app, download it from **Galaxy Apps** or **Play Store**.
- 2 On your device, launch the **Settings** app and tap **Cloud and accounts** → **Smart Switch**.
- 3 Place the devices near each other.
- 4 On the previous device, tap **WIRELESS** → **SEND**.
- 5 On your device, tap **WIRELESS** → **RECEIVE** and select the previous device type.
- 6 Follow the on-screen instructions to transfer data from your previous device.

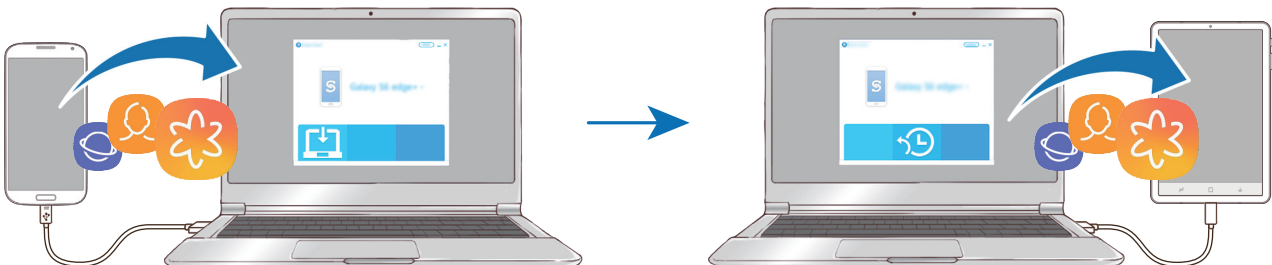
Transferring data using external storage


Transfer data using external storage, such as a microSD card.

- 1 Transfer data from your previous device to external storage.
- 2 Insert or connect the external storage device to your device.
- 3 On your device, launch the **Settings** app and tap **Cloud and accounts** → **Smart Switch** → **EXTERNAL STORAGE** → **RESTORE**.
- 4 Follow the on-screen instructions to transfer data from external storage.

Transferring backup data from a computer

Transfer data between your device and a computer. You must download the Smart Switch computer version app from www.samsung.com/smartswitch. Back up data from your previous device to a computer and import the data to your device.



- 1 On the computer, visit www.samsung.com/smartswitch to download Smart Switch.
 - 2 On the computer, launch Smart Switch.
-  If your previous device is not a Samsung device, back up data to a computer using a program provided by the device's manufacturer. Then, skip to the fifth step.
- 3 Connect your previous device to the computer using the device's USB cable.
 - 4 On the computer, follow the on-screen instructions to back up data from the device. Then, disconnect your previous device from the computer.
 - 5 Connect your device to the computer using the USB cable.
 - 6 On the computer, follow the on-screen instructions to transfer data to your device.

Viewing imported data

You can view the imported data on the same app from your previous device.

If your new device does not have the same apps to view or play the imported data, the data will be saved to a similar app. For example, if you import memos and your device does not have the Memo app, you can view the memos in the **Samsung Notes** app.

Samsung Cloud

Back up data from your previous device to Samsung Cloud and restore the data to your new device. You must register and sign in to your Samsung account to use Samsung Cloud. Refer to [Samsung account](#) for more information.

Backing up data

1 On your previous device, sign in to your Samsung account.

2 Launch the **Settings** app, select the backup option, and back up your data.



- If your device supports Samsung Cloud, launch the **Settings** app, tap **Cloud and accounts** → **Samsung Cloud**, select your device under **BACKUP AND RESTORE**, tap **Back up**, and then back up your data.
- The data backup method may vary depending on your model.
- Some data will not be backed up. To check which data will be backed up, launch the **Settings** app, tap **Cloud and accounts** → **Samsung Cloud**, select your device under **BACKUP AND RESTORE**, and then tap **Back up**.

Restoring data


1 On your new device, launch the **Settings** app and tap **Cloud and accounts** → **Samsung Cloud**.

2 Select your previous device under **BACKUP AND RESTORE** and tap **Restore data**.

3 Tick the data types you want to restore and tap **RESTORE**.

Syncing data

You can sync data saved in your device with Samsung Cloud and access it from other devices.

- 1 On your new device, launch the **Settings** app and tap **Cloud and accounts** → **Samsung Cloud**.
- 2 Tap  → **Settings** → **Sync settings**.
- 3 Tap the switches next to the items you want to sync with.

Checking data

You can check the saved items and used memory of your Samsung Cloud. Launch the **Settings** app and tap **Cloud and accounts** → **Samsung Cloud**.

- You can immediately check your used memory and saved items, such as, **GALLERY**, **SAMSUNG NOTES**, and **SAMSUNG CLOUD DRIVE**. Tap each card and enter the next page. You can change the settings or check the saved data.
- You can check the backup data in your Samsung account by using the **BACKUP AND RESTORE** option. Select your device and tap **Restore data**.

Understanding the screen

Controlling the touchscreen



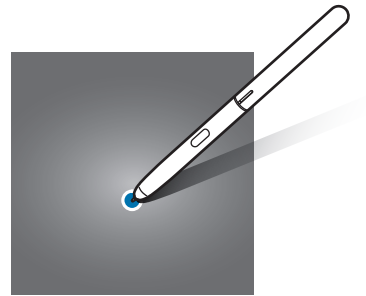
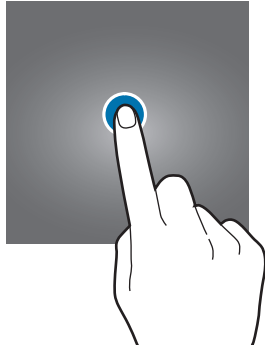
- Do not allow the touchscreen to come into contact with other electrical devices. Electrostatic discharges can cause the touchscreen to malfunction.
- To avoid damaging the touchscreen, do not tap it with anything sharp or apply excessive pressure to it with your fingertips.
- Leaving the touchscreen idle for extended periods may result in afterimages (screen burn-in) or ghosting. Turn off the touchscreen when you do not use the device.



- The device may not recognise touch inputs close to the edges of the screen, which are outside of the touch input area.
- It is recommended to use fingers or the S Pen when you use the touchscreen.

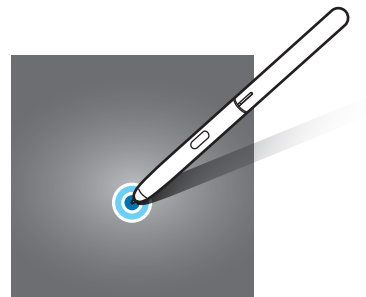
Tapping

Tap the screen.



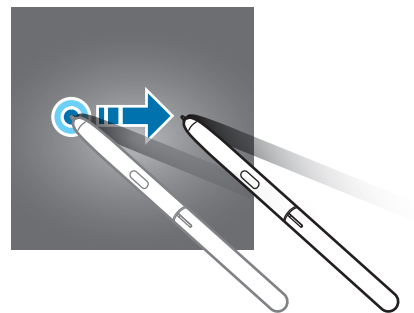
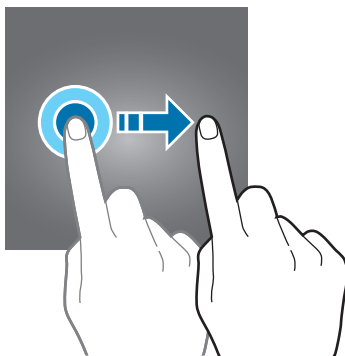
Tapping and holding

Tap and hold the screen for approximately 2 seconds.



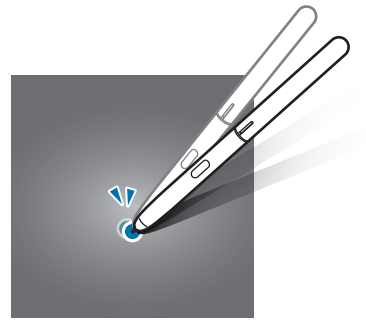
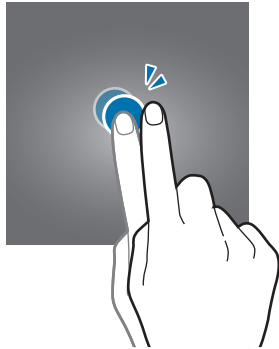
Dragging

Tap and hold an item and drag it to the target position.



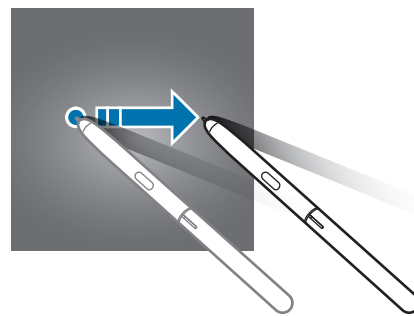
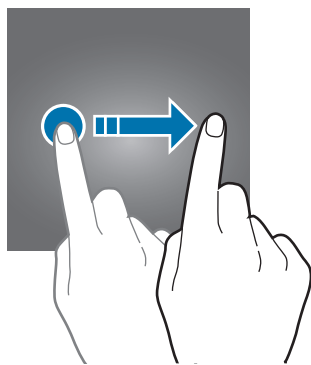
Double-tapping

Double-tap the screen.



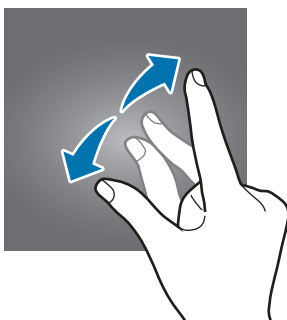
Swiping

Swipe upwards, downwards, to the left, or to the right.



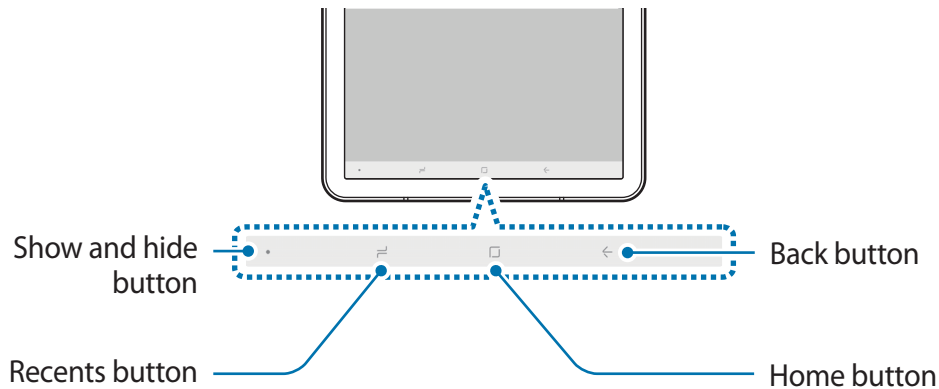
Spreading and pinching

Spread two fingers apart or pinch on the screen.



Navigation bar (soft buttons)

When you turn on the device, the soft buttons will appear on the navigation bar at the bottom of the screen. The soft buttons are set to the Recents button, Home button, and Back button by default. The functions of the buttons can change according to the app currently being used or usage environment.



Button	Function
●	Show and hide <ul style="list-style-type: none"> • Double-tap to pin or hide the navigation bar.
☰	Recents <ul style="list-style-type: none"> • Tap to open the list of recent apps.
□	Home <ul style="list-style-type: none"> • Tap to return to the Home screen. • Tap and hold to launch the Google Assistant app.
←	Back <ul style="list-style-type: none"> • Tap to return to the previous screen.

Displaying or hiding the navigation bar

Using the Show and hide button at the left side of the navigation bar, you can set the navigation bar to be hidden or pinned on the screen when you use apps or features. The navigation bar is pinned by default.

If you want to view files or use apps in full screen, double-tap the Show and hide button to hide the navigation bar.

To show the navigation bar again, drag upwards from the bottom of the screen.



- On certain screens, such as the Home screen, the navigation bar will always be displayed and the Show and hide button will not appear.
- Even after you pin the navigation bar, it can be hidden while using some apps or features, such as a video player.

Setting the navigation bar

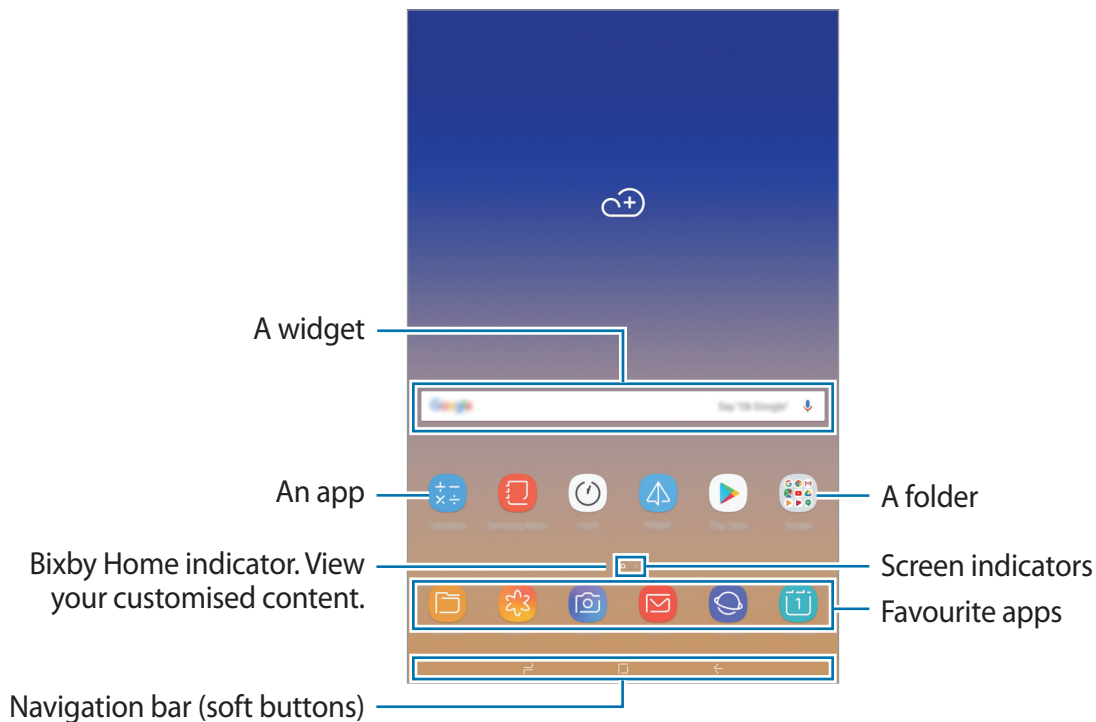
Launch the **Settings** app, tap **Display** → **Navigation bar**, and then select an option.

- **Show and hide button:** Add a button to hide or pin the navigation bar. You can set whether or not to display the button for each app.
- **BACKGROUND COLOUR:** Change the navigation bar's background colour.
- **Button layout:** Change the order of the buttons on the navigation bar.

Home screen and Apps screen

The Home screen is the starting point for accessing all of the device's features. It displays widgets, shortcuts to apps, and more.

The Apps screen displays icons for all apps, including newly installed apps.

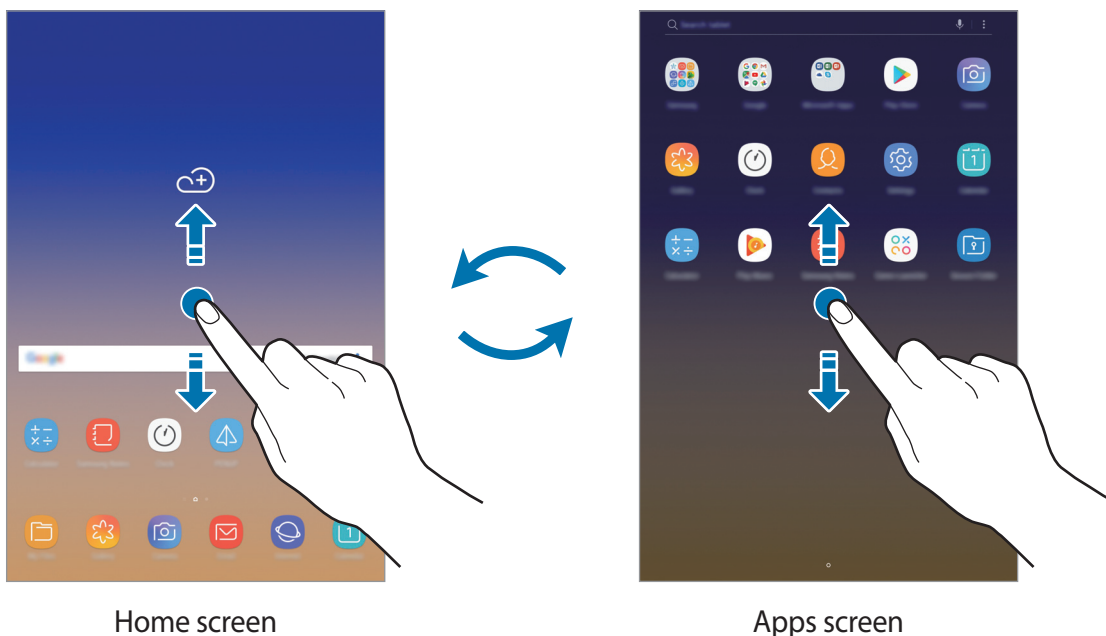


Switching between Home and Apps screens

On the Home screen, swipe upwards or downwards to open the Apps screen.

To return to the Home screen, swipe upwards or downwards on the Apps screen.

Alternatively, tap the Home button or the Back button.



If you add the Apps button on the Home screen, you can open the Apps screen by tapping the button. On the Home screen, tap and hold an empty area and tap **Home screen settings** → **Apps button** → **Show Apps button** → **APPLY**. The Apps button will be added at the bottom of the Home screen.



Moving items

Tap and hold an item, and then drag it to a new location. To move the item to another panel, drag it to the side of the screen.

To add a shortcut to an app on the Home screen, tap and hold an item on the Apps screen, and then drag it to the top or bottom of the screen. A shortcut to the app will be added on the Home screen.

You can also move frequently used apps to the shortcuts area at the bottom of the Home screen.

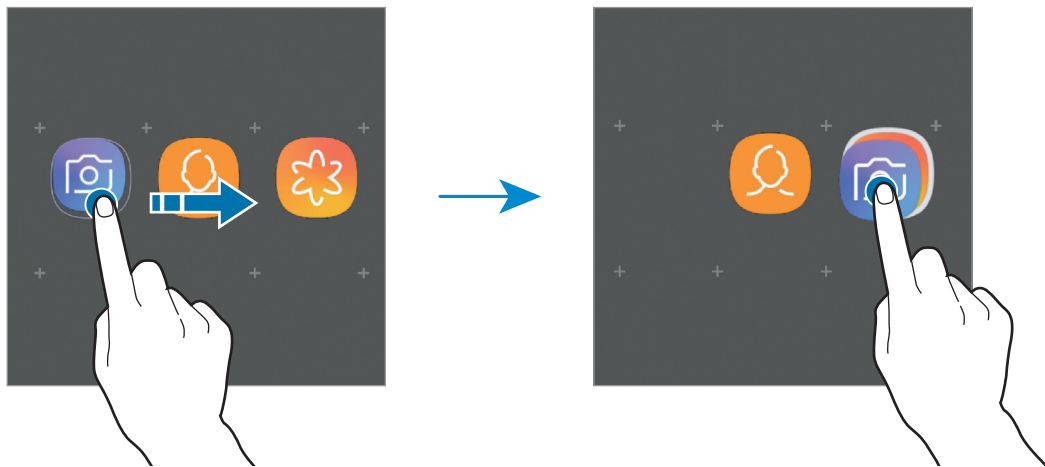
Creating folders

Create folders and gather similar apps to quickly access and launch apps.

1 On the Home screen or the Apps screen, tap and hold an app, and then drag it over another app.

2 Drop the app when a folder frame appears around the apps.

A new folder containing the selected apps will be created. Tap **Enter folder name** and enter a folder name.



- **Adding more apps**

Tap **ADD APPS** on the folder. Tick the apps to add and tap **ADD**. You can also add an app by dragging it to the folder.

- **Moving apps from a folder**


Tap and hold an app to drag it to a new location.

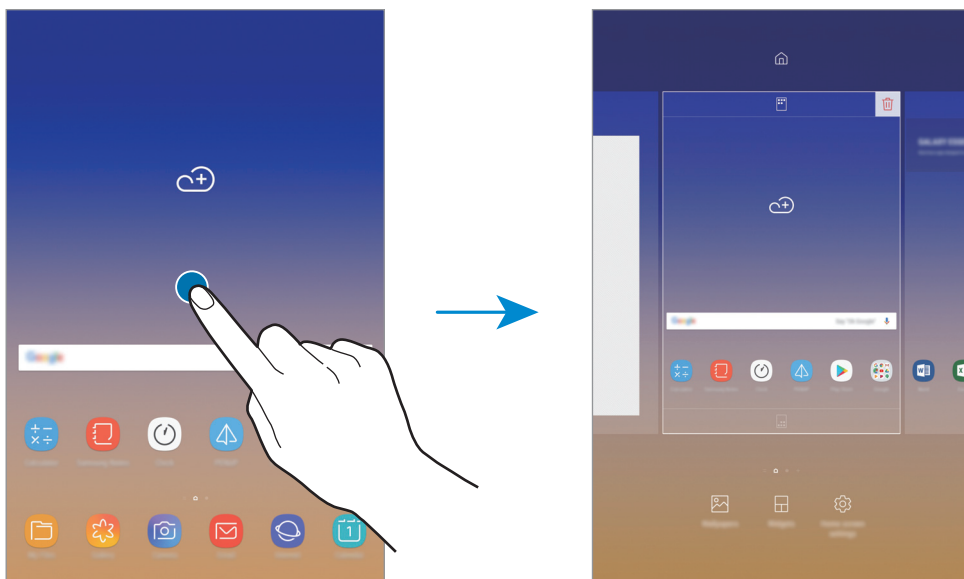
- **Deleting a folder**

Tap and hold a folder, and then tap **Delete folder**. Only the folder will be deleted. The folder's apps will be relocated to the Apps screen.

Editing the Home screen

On the Home screen, tap and hold an empty area, or pinch your fingers together to access the editing options. You can set the wallpaper, add widgets, and more. You can also add, delete, or rearrange Home screen panels.

- Adding panels: Swipe to the left, and then tap +.
- Moving panels: Tap and hold a panel preview, and then drag it to a new location.
- Deleting panels: Tap  on the panel.



- **Wallpapers:** Change the wallpaper settings for the Home screen and the locked screen.
- **Widgets:** Widgets are small apps that launch specific app functions to provide information and convenient access on your Home screen. Tap and hold a widget, and then drag it to the Home screen. The widget will be added on the Home screen.
- **Home screen settings:** Change the Home screen settings.

Displaying all apps on the Home screen

Without using a separate Apps screen, you can set the device to display all apps on the Home screen. On the Home screen, tap and hold an empty area, and then tap **Home screen settings** → **Home screen layout** → **Home screen only** → **APPLY**.

You can now access all your apps by swiping to the left on the Home screen.

Indicator icons

Indicator icons appear on the status bar at the top of the screen. The icons listed in the table below are most common.



The status bar may not appear at the top of the screen in some apps. To display the status bar, drag down from the top of the screen.

Icon	Meaning
	Wi-Fi connected
	Bluetooth feature activated
	Location services being used
	Alarm activated
	Mute mode activated
	Vibration mode activated
	Flight mode activated
	Error occurred or caution required
	Battery charging
	Battery power level

Lock screen

Pressing the Power key turns off the screen and locks it. Also, the screen turns off and automatically locks if the device is not used for a specified period.

To unlock the screen, swipe in any direction when the screen turns on.

If the screen is off, press the Power key or double-tap anywhere on the screen to turn on the screen.



Locked screen

Changing the screen lock method

To change the screen lock method, launch the **Settings** app, tap **Lock screen** → **Screen lock type**, and then select a method.

When you set a pattern, PIN, password, face, or iris for the screen lock method, you can protect your personal information by preventing others from accessing your device. After setting the screen lock method, the device will require an unlock code whenever unlocking it.

- **Swipe:** Swipe in any direction on the screen to unlock it.
- **Pattern:** Draw a pattern with four or more dots to unlock the screen.
- **PIN:** Enter a PIN with at least four numbers to unlock the screen.
- **Password:** Enter a password with at least four characters, numbers, or symbols to unlock the screen.
- **None:** Do not set a screen lock method.
- **Intelligent Scan:** Register both your face and irises to the device to unlock the screen more conveniently. Refer to [Intelligent Scan](#) for more information.
- **Face:** Register your face to unlock the screen. Refer to [Face recognition](#) for more information.
- **Iris:** Register your irises to unlock the screen. Refer to [Iris recognition](#) for more information.



You can set your device to perform a factory data reset if you enter the unlock code incorrectly several times in a row and reach the attempt limit. Launch the **Settings** app, tap **Lock screen** → **Secure lock settings**, unlock the screen using the preset screen lock method, and then tap the **Auto factory reset** switch to activate it.

Screen capture

Capture a screenshot while using the device and write on, draw on, crop, or share the captured screen. You can capture the current screen and scrollable area.

Capturing a screenshot

Use the following methods to capture a screenshot. Captured screenshots will be saved in **Gallery**.

- **Key capture:** Press and hold the Volume Down key and the Power key simultaneously.
- **Swipe capture:** Swipe your hand to the left or right across the screen.
- **Air command capture:** Hover the S Pen over the screen and press the S Pen button to open the Air command panel, and then tap **Screen write**. Refer to [Screen write](#) for more information.



- It is not possible to capture a screenshot while using some apps and features.
- If capturing a screenshot by swiping is not activated, launch the **Settings** app, tap **Advanced features**, and then tap the **Palm swipe to capture** switch to activate it.

After capturing a screenshot, use the following options on the toolbar at the bottom of the screen:



- **Bixby Vision:** Recognise content using Bixby Vision and search for relevant information. This option is not supported when you capture a screenshot using the **Screen write** feature.
- **Scroll capture:** Capture the current content and the hidden content on an elongated page, such as a webpage. When you tap **Scroll capture**, the screen will automatically scroll down and more content will be captured.
- **Draw:** Write or draw on the screenshot. Refer to [Screen write](#) for more information.
- **Crop:** Crop a portion from the screenshot. The cropped area will be saved in **Gallery**.
- **Share:** Share the screenshot with others.

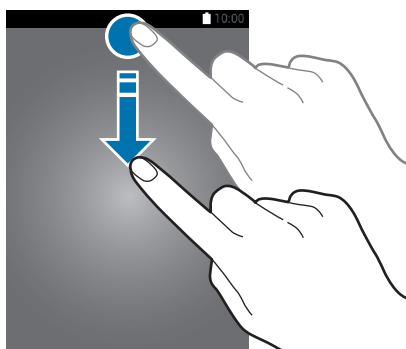


- If the options are not visible on the captured screen, launch the **Settings** app, tap **Advanced features**, and then tap the **Smart capture** switch to activate it.

Notification panel

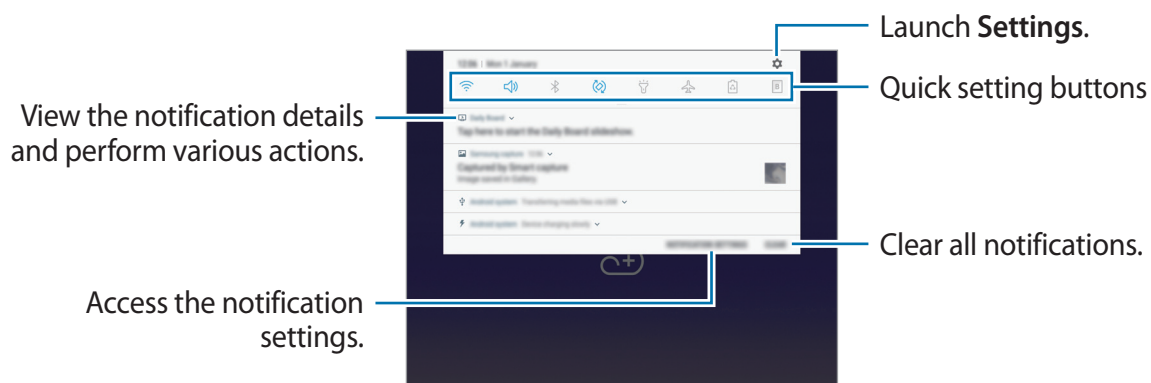
When you receive new notifications, indicator icons appear on the status bar. To see more information about the icons, open the notification panel and view the details.

To open the notification panel, drag the status bar downwards. To close the notification panel, swipe upwards on the screen.



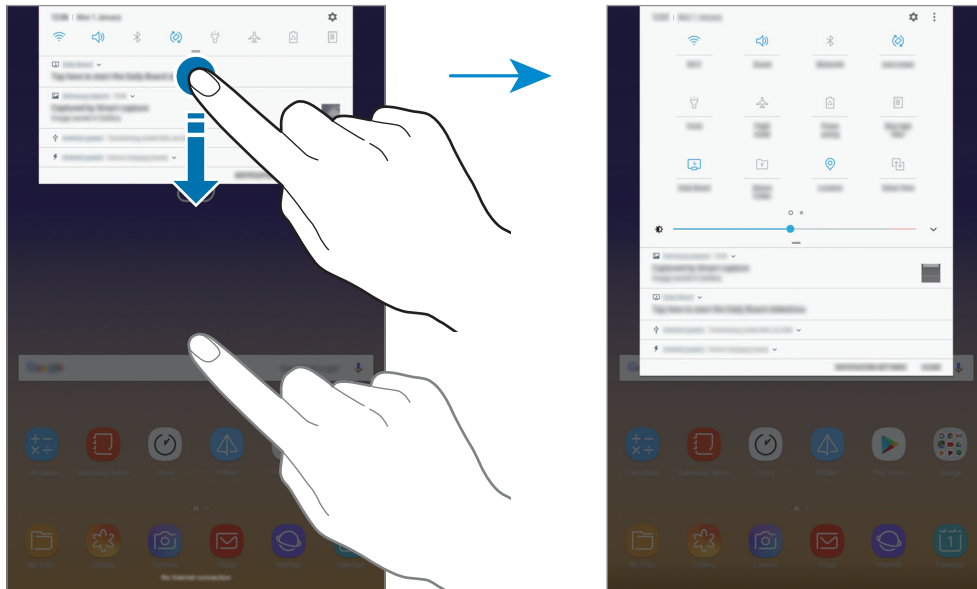
You can open the notification panel, even on the locked screen.

You can use the following functions on the notification panel.




Using quick setting buttons

Tap quick setting buttons to activate certain features. Swipe downwards on the notification panel to view more buttons.



To change feature settings, tap the text under each button. To view more detailed settings, tap and hold a button.

To rearrange buttons, tap  → **Button order**, tap and hold a button, and then drag it to another location.

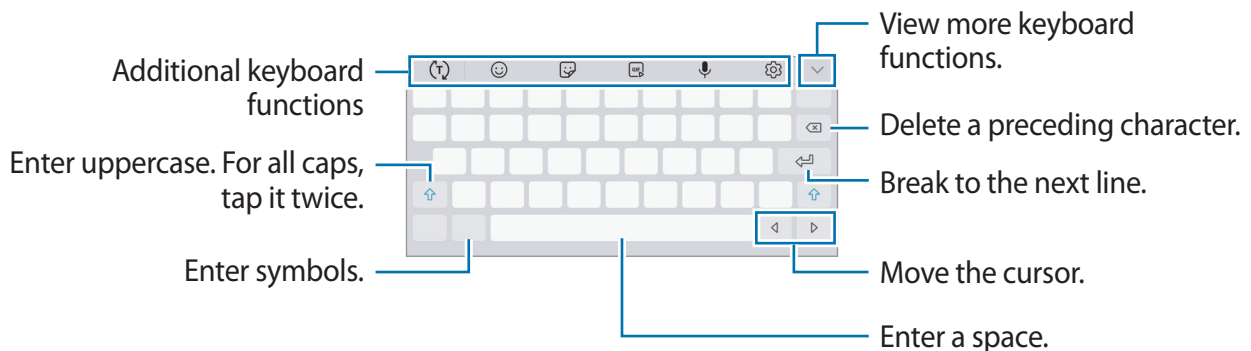
Entering text

Keyboard layout


A keyboard appears automatically when you enter text to send emails, create notes, and more.



- When the keyboard is opened for the first time, the keyboard setup screen will appear. Set the input language, keyboard type, and keyboard settings and then tap **START**.
- Text entry is not supported in some languages. To enter text, you must change the input language to one of the supported languages.




Changing the input language


Tap  → **Languages and types** → **MANAGE INPUT LANGUAGES**, and then select the languages to use. When you select two or more languages, you can switch between the input languages by swiping to the left or right on the space key.

Changing the keyboard

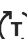










Tap  to change the keyboard.

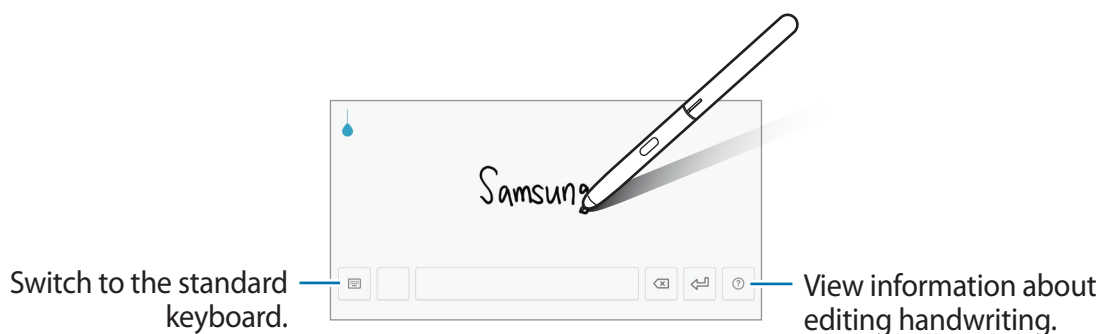
To change the keyboard type, tap  → **Languages and types**, select a language, and then select the keyboard type you want.








- If the keyboard button () does not appear on the navigation bar, launch the **Settings** app, tap **General management** → **Language and input**, and then tap the **Show Keyboard button** switch to activate it.

Additional keyboard functions



- : Predict words based on your input and show word suggestions. To return to the keyboard functions list, tap .
- : Enter emoticons.
- : Enter stickers.
- : Attach animated GIFs.
- : Enter text by voice.
- : Change the keyboard settings.
-  → : Create a live message. Instead of a text message, record your actions while handwriting or drawing a message and save it as an animated file. Refer to [Live message](#) for more information.
-  → : Switch to handwriting mode.



You can quickly switch to handwriting mode by hovering the S Pen over the text field and tapping . If this feature is not activated, launch the **Settings** app, tap **Advanced features** → **S Pen**, and then tap the **Direct pen input** switch to activate it.






-  → : Add an item from the clipboard.
-  → : Switch to the floating or split keyboard. You can move the keyboard to another location by dragging the tab.

Copying and pasting

- 1 Tap and hold over text.
- 2 Drag  or  to select the desired text, or tap **Select all** to select all text.
- 3 Tap **Copy** or **Cut**.
The selected text is copied to the clipboard.
- 4 Tap and hold where the text is to be inserted and tap **Paste**.
To paste text that you have previously copied, tap **Clipboard** and select the text.

Dictionary

Look up definitions for words while using certain features, such as when browsing webpages.

- 1 Tap and hold over a word that you want to look up.
If the word you want to look up is not selected, drag  or  to select the desired text.
- 2 Tap **Dictionary** on the options list.
If a dictionary is not preinstalled on the device, tap **Move to Manage dictionaries** →  next to a dictionary to download it.
- 3 View the definition in the dictionary pop-up window.
To switch to the full screen view, tap . Tap the definition on the screen to view more definitions. In the detailed view, tap  to add the word to your favourite words list or tap **Search Web** to use the word as a search term.

Apps and features

Installing or uninstalling apps

Galaxy Apps

Purchase and download apps. You can download apps that are specialised for Samsung Galaxy devices.

Open the **Samsung** folder and launch the **Galaxy Apps** app.



This app may not be available depending on the region or service provider.

Installing apps

Browse apps by category or tap the search field to search for a keyword.

Select an app to view information about it. To download free apps, tap **INSTALL**. To purchase and download apps where charges apply, tap the price and follow the on-screen instructions.



To change the auto update settings, tap  → **Settings** → **Auto update apps**, and then select an option.

Play Store

Purchase and download apps.


Launch the **Play Store** app.

Installing apps

Browse apps by category or search for apps by keyword.

Select an app to view information about it. To download free apps, tap **INSTALL**. To purchase and download apps where charges apply, tap the price and follow the on-screen instructions.



To change the auto update settings, tap  → **Settings** → **Auto-update apps**, and then select an option.

Managing apps

Uninstalling or disabling apps

Tap and hold an app and select an option.

- **Disable:** Disable selected default apps that cannot be uninstalled from the device.
- **Uninstall:** Uninstall downloaded apps.

Enabling apps

Launch the **Settings** app, tap **Apps** → ▼ → **Disabled**, select an app, and then tap **ENABLE**.

Setting app permissions

For some apps to operate properly, they may need permission to access or use information on your device. When you open an app, a pop-up window may appear and request access to certain features or information. Tap **ALLOW** on the pop-up window to grant permissions to the app.

To view your app permission settings, launch the **Settings** app and tap **Apps**. Select an app and tap **Permissions**. You can view the app's permissions list and change its permissions.

To view or change app permission settings by permission category, launch the **Settings** app and tap **Apps** → ⋮ → **App permissions**. Select an item and tap the switches next to apps to grant permissions.



If you do not grant permissions to apps, the basic features of the apps may not function properly.

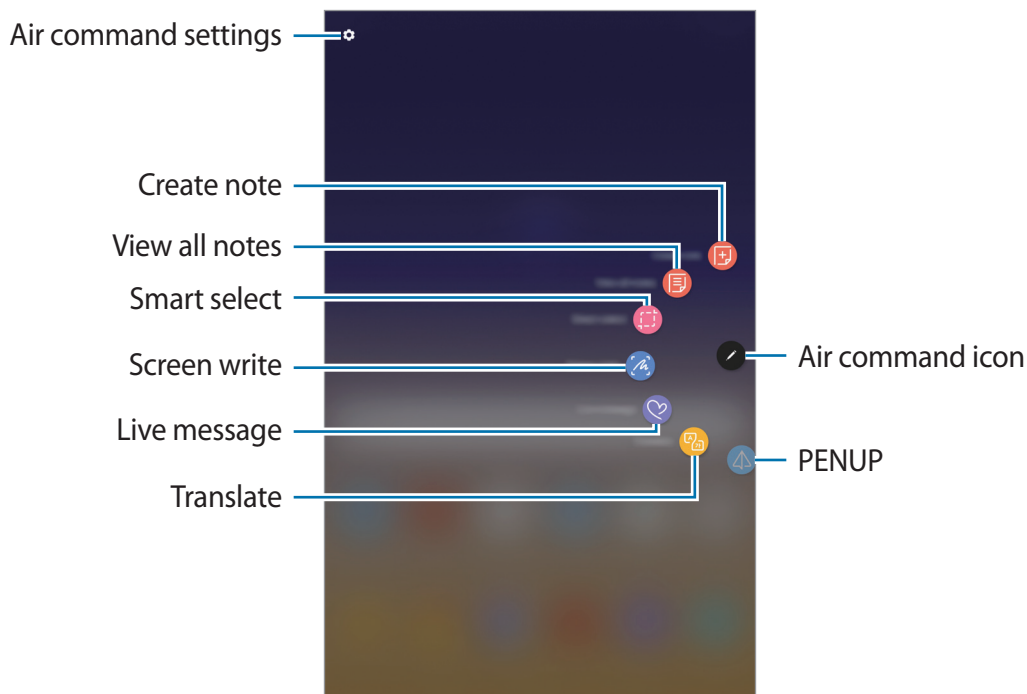
S Pen features

Air command

Air command is a menu that provides S Pen features and quick access to frequently used apps.

To open the Air command panel, hover the S Pen over the screen and press the S Pen button. You can also tap the Air command icon with the S Pen.


Drag upwards or downwards on the Air command panel and select a function or app you want.



Adding shortcuts to the Air command panel

Add shortcuts to frequently used apps or functions to the Air command panel.

On the Air command panel, tap **Add shortcuts** and select apps or functions to open from the panel.

Alternatively, open the Air command panel and tap  → **Shortcuts**.

S Pen features

Activate various S Pen features from the Air command panel. The shortcuts that do not appear on the panel by default can be added by using the **Add shortcuts** feature.

- **Create note:** Create notes easily in a pop-up window without launching the **Samsung Notes** app. Refer to [Create note](#) for more information.
- **View all notes:** View all notes in the **Samsung Notes** app.
- **Smart select:** Use the S Pen to select an area and perform actions, such as sharing or saving. Refer to [Smart select](#) for more information.
- **Screen write:** Capture screenshots to write or draw on them or crop an area from the captured image. You can also capture the current content and the hidden content on an elongated page, such as a webpage. Refer to [Screen write](#) for more information.
- **Live message:** Instead of text message, create and send a unique message by recording your actions while handwriting or drawing a live message and saving it as an animated file. Refer to [Live message](#) for more information.
- **Translate:** Hover the S Pen over a word to translate it. Refer to [Translate](#) for more information.
- **PENUP:** Post your artwork, view others' artwork, and get useful drawing tips. Refer to [PENUP](#) for more information.
- **Add shortcuts:** Add shortcuts to frequently used apps to the Air command panel.

Air command icon

When the Air command panel is closed, the Air command icon will remain on the screen. You can open the Air command panel by tapping the icon with the S Pen.

To move the icon, drag  to a new location.

If the Air command icon does not appear on the screen, launch the **Settings** app, tap **Advanced features** → **S Pen**, and then tap the **Floating icon** switch to activate it.

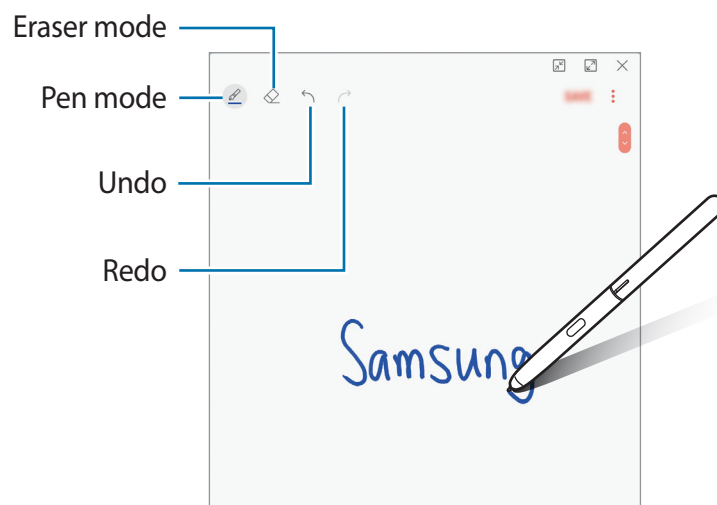
Create note

Create notes easily in a pop-up window without launching the **Samsung Notes** app.

- 1 Open the Air command panel and tap **Create note**. Alternatively, double-tap the screen while pressing and holding the S Pen button.

The note screen will appear as a pop-up window.

- 2 Create a note using the S Pen.



- 3 When you are finished composing the note, tap **SAVE**.

The note will be saved in **Samsung Notes**.

Smart select

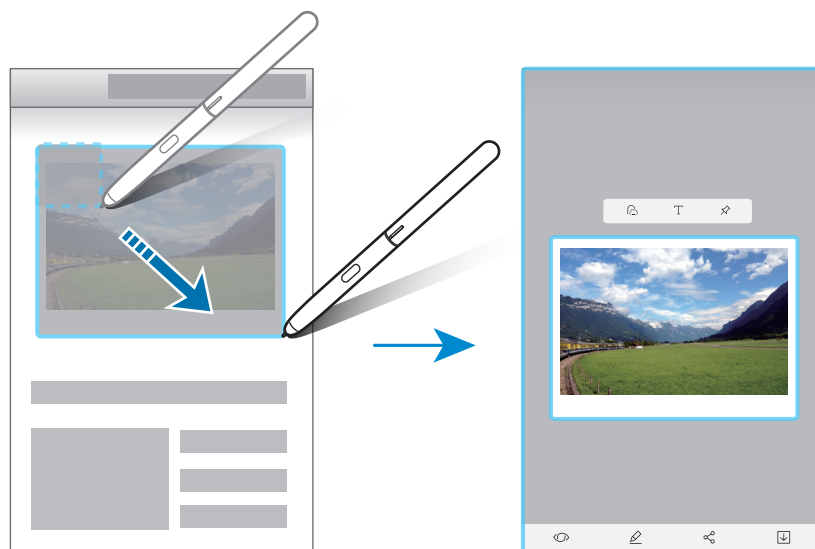
Use the S Pen to select an area and perform actions, such as sharing or saving. You can also select an area from a video and capture it as a GIF animation.

- 1 When there is content you want to capture, such as a part of an image, open the Air command panel and tap **Smart select**.
- 2 Select a desired shape icon on the toolbar and drag the S Pen across the content you want to select.

Tap **Auto select** to automatically reshape the selected area.

If text is included in the selected area, tap **Extract text** to recognise and extract text from the selected area.

To pin the selected area at the top of the screen, tap **Pin to screen**.

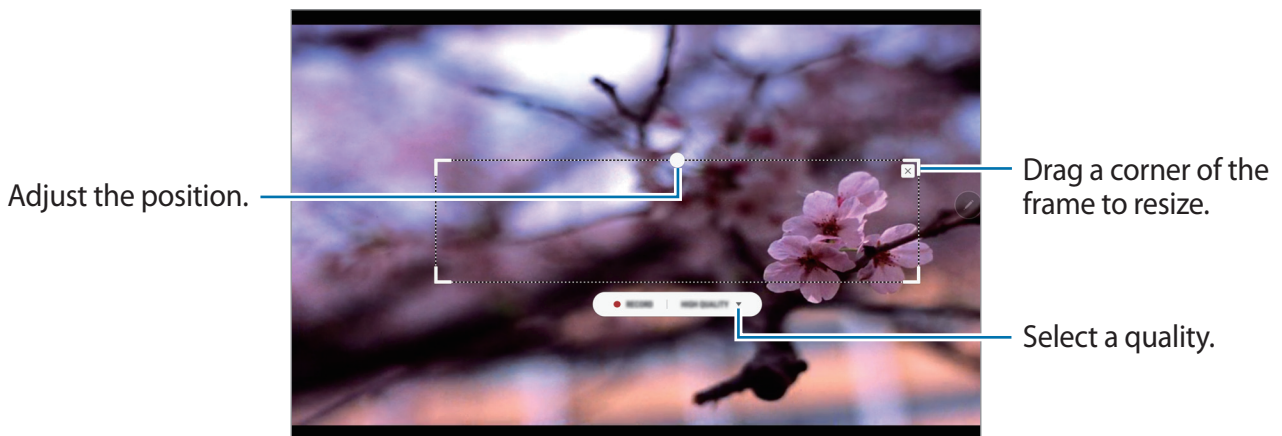


- 3 Select an option to use with the selected area.
 - **Bixby Vision:** Recognise content using Bixby Vision and search for relevant information.
 - **Draw:** Write or draw on the selected area.
 - **Share:** Share the selected area with others.
 - **Save:** Save the selected area in **Gallery**.

Capturing an area from a video

While playing a video, select an area and capture it as a GIF animation.

- 1 When there is content you want to capture during video playback, open the Air command panel and tap **Smart select**.
- 2 On the toolbar, tap **Animation**.
- 3 Adjust the position and size of the capturing area.



- 4 Tap **RECORD** to start capturing.



- Before capturing a video, make sure that the video is playing.
- The maximum duration you can capture an area of the video for will be displayed on the screen.
- When capturing an area from a video, its sound will not be recorded.

- 5 Tap **STOP** to stop capturing.

- 6 Select an option to use with the selected area.

- **Draw:** Write or draw on the selected area. Tap **Preview** to view the result before saving the file.
- **Share:** Share the selected area with others.
- **Save:** Save the selected area in **Gallery**.

Screen write

Capture screenshots to write or draw on them or crop an area from the captured image.



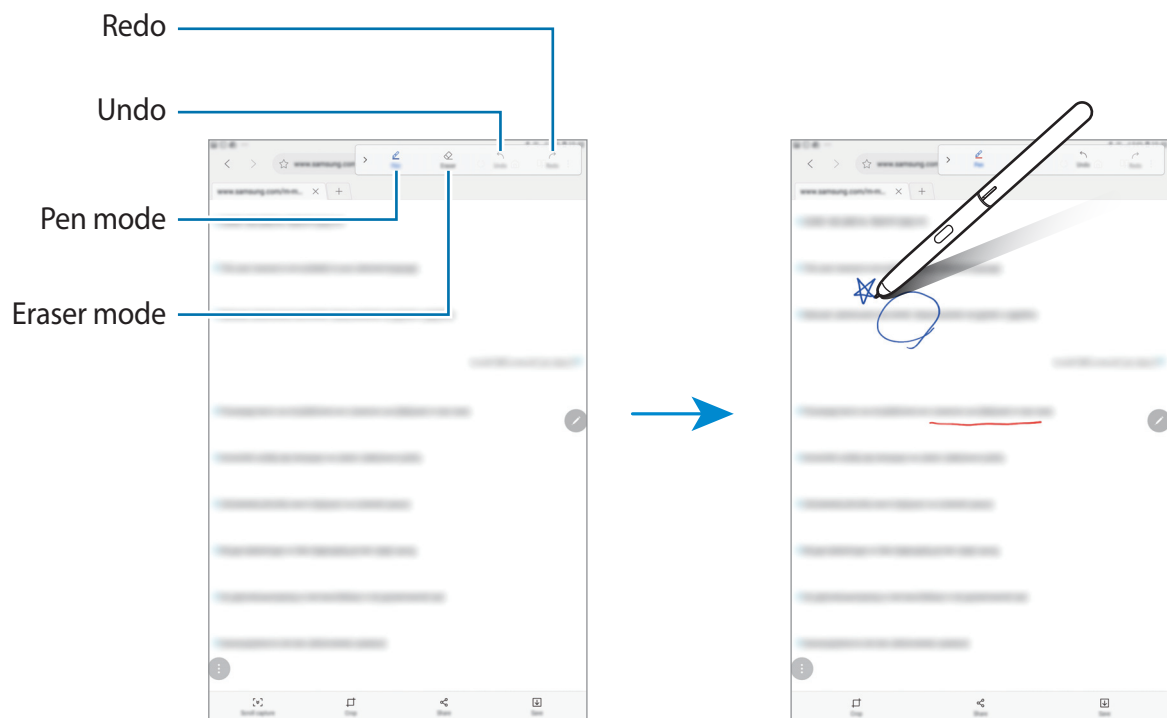
It is not possible to capture a screenshot while using some apps.

- 1 When there is content you want to capture, open the Air command panel and tap **Screen write**.

The current screen is automatically captured and the editing toolbar appears.

- 2 If you capture the content on an elongated page, such as a webpage, tap **Scroll capture** to capture the hidden content. Tap **SCROLL CAPTURE** repeatedly until screen capture is complete, and then tap **DONE**.

- 3 Write a memo on the screenshot.



4 Select an option to use with the screenshot.

- **Crop:** Crop a portion of the screenshot. Only the cropped area will be saved in **Gallery**.
- **Share:** Share the screenshot with others.
- **Save:** Save the screenshot in **Gallery**.






Live message

Instead of a text message, create and send a unique message by recording your actions while handwriting or drawing a live message and saving it as an animated file.

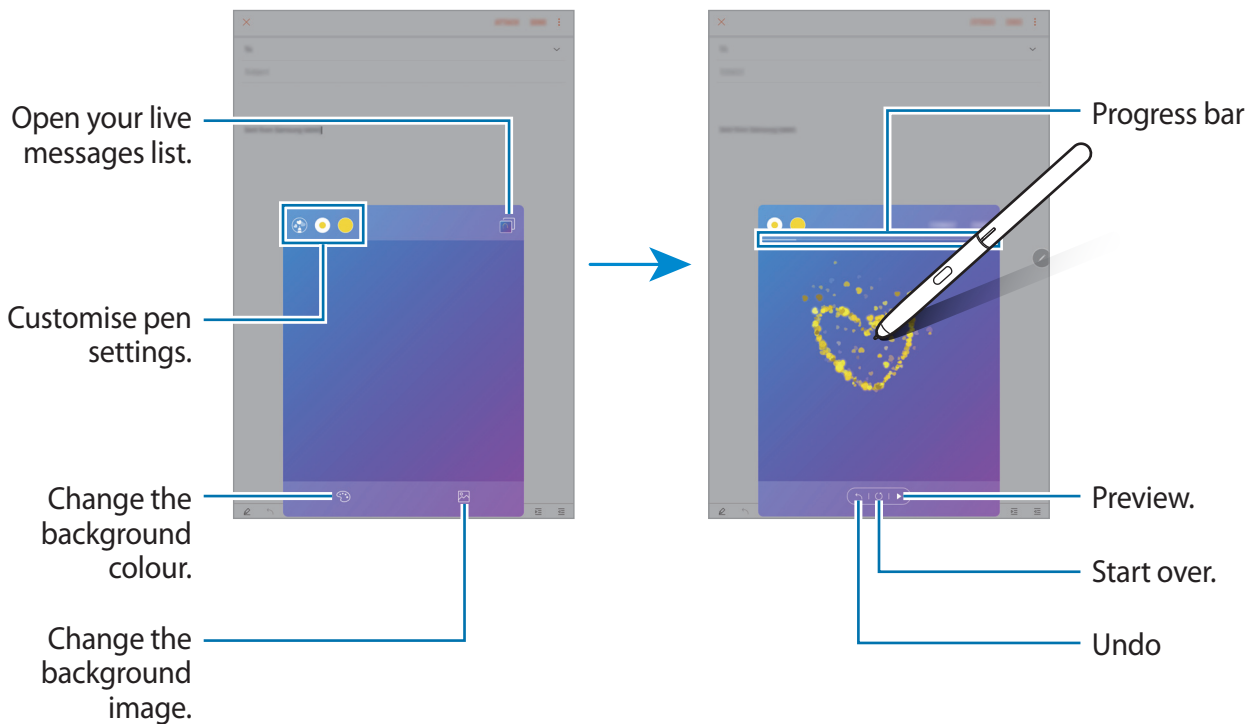
1 When you want to send an animated message while composing an email, open the Air command panel and tap **Live message**. Alternatively, tap → on the Samsung keyboard.

The live message window will appear.

2 Customise pen settings and background image.

- : Change the writing effect.
- : Change the pen's radius.
- : Change the pen's colour.
- : Change the background colour.
- : Change the background image.

3 Write or draw on the live message window.

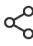


4 When you are finished, tap **DONE** and send the email.

The live message will be saved in **Gallery** as an animated GIF file and it will be attached to the current email.



You can also share live messages using other sharing methods.

- Select a live message in **Gallery** and tap .
- On other screens rather than the email composition screen, open the Air command, tap **Live message**, create a live message, and then tap **SHARE**.

Translate

Hover the S Pen over the text you want to translate. The units included in the text will also be converted.

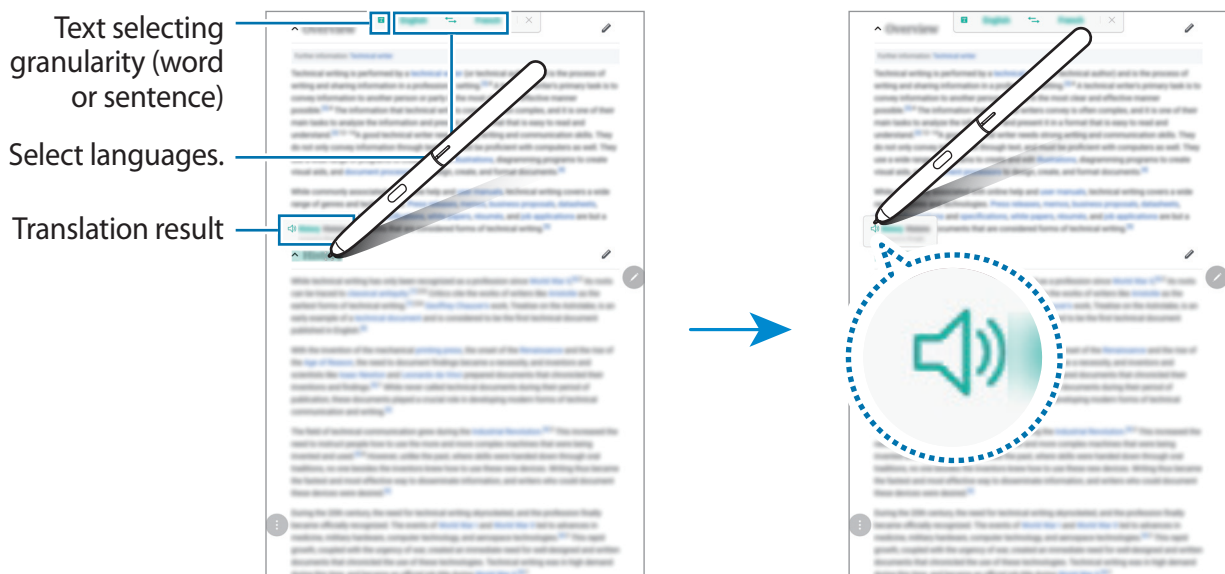


- To use this feature, your device must be connected to a Wi-Fi.
- This feature does not support some languages.
- This feature is available only when detectable text is on the screen.

- 1 When there are text you want to translate, open the Air command panel and tap **Translate**.
- 2 Select the languages on the translator panel at the top of the screen.
You can change the text between words and sentences by tapping **T** or **≡**.
- 3 Hover the S Pen over the text you want to translate or the unit you want to convert.
The translated text will appear above the original text. To listen to the pronunciation of the original text, tap



The icon may not appear depending on the language you select.

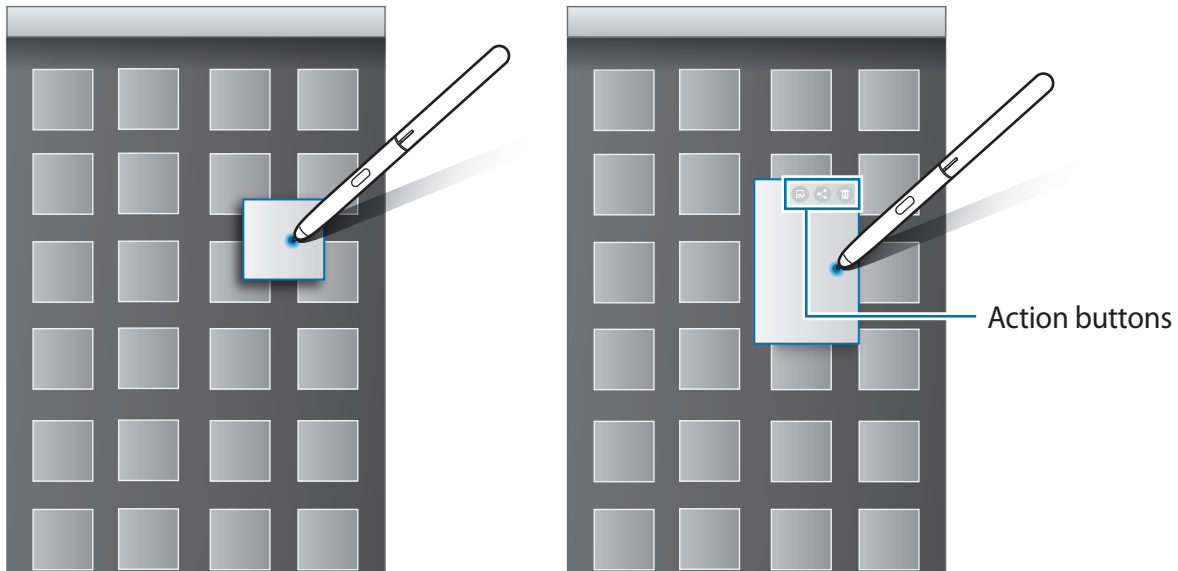


- 4 To close the translator, tap **×** on the translator panel.

Air view

Hover the S Pen over an item on the screen to preview content or view information in a pop-up window.

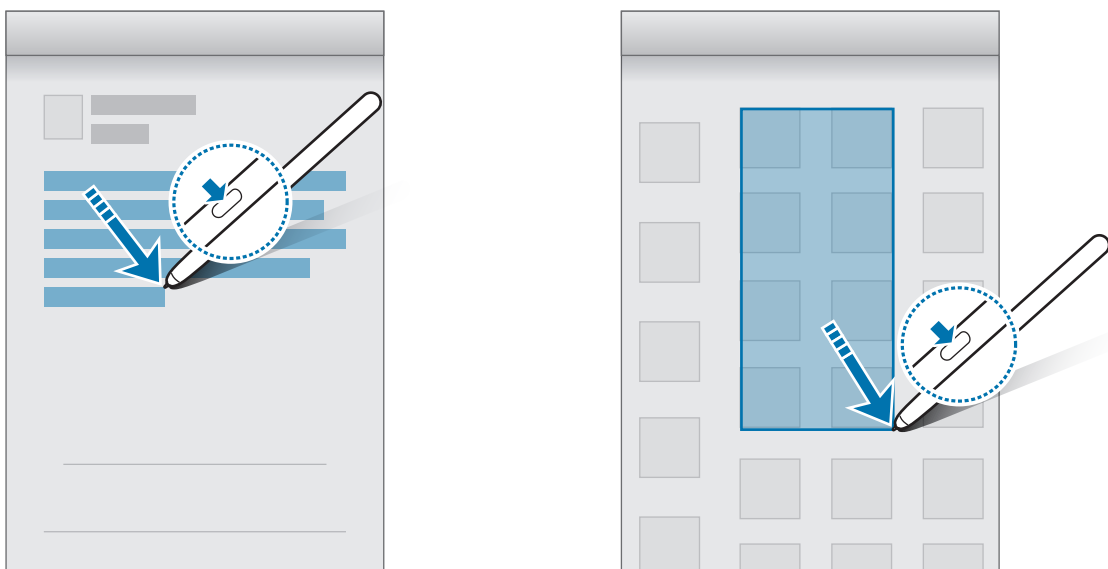
In some apps, Action buttons will be displayed on the preview window.



If this feature is not activated, launch the **Settings** app, tap **Advanced features** → **S Pen**, and then tap the **Air view** switch to activate it.

Pen Select

While pressing and holding the S Pen button, drag the S Pen over text or item lists to select multiple items or text. You can also copy and paste the selected items or text into another app or share them with others.





Screen off memo

You can quickly create memos by writing on the screen without turning on it.



If this feature is not activated, launch the **Settings** app, tap **Advanced features** → **S Pen**, and then tap the **Screen off memo** switch to activate it.

Creating a screen off memo

- 1 When the screen is off, hover the S Pen over the screen and press the S Pen button.
- 2 Write or draw a memo.
To extend the page, tap .
- 3 To save the memo, tap **SAVE IN NOTES**. The memo will be saved to **Samsung Notes**.
To view memos, launch the **Samsung Notes** app and tap  → **Screen off memo**.

Bixby

Introduction

Bixby is a new interface that can communicate with you and it provides services that help you to use your tablet more conveniently.

- **Bixby Home:** You can view recommended services and information that Bixby provides by analysing your usage patterns and your routine.
- **Bixby Vision:** You can easily search for relevant information about objects or locations using the Bixby Vision features.
- **Reminder:** You can create reminders to schedule to-do items or to view content later.



- To use the Bixby feature, your device must be connected to a Wi-Fi.
- To use the Bixby feature, you must register and sign in to your Samsung account.

Starting Bixby

When you launch Bixby for the first time, the Bixby intro page will appear. You must register and sign in to your Samsung account according to the on-screen instructions and agree to the terms and conditions.

- 1 Swipe to the right on the Home screen.
- 2 Check the Bixby intro page and tap **START**.
- 3 Tap **SIGN IN** and follow the on-screen instructions to sign in to your Samsung account.



If you are already signed in, this step will not appear.

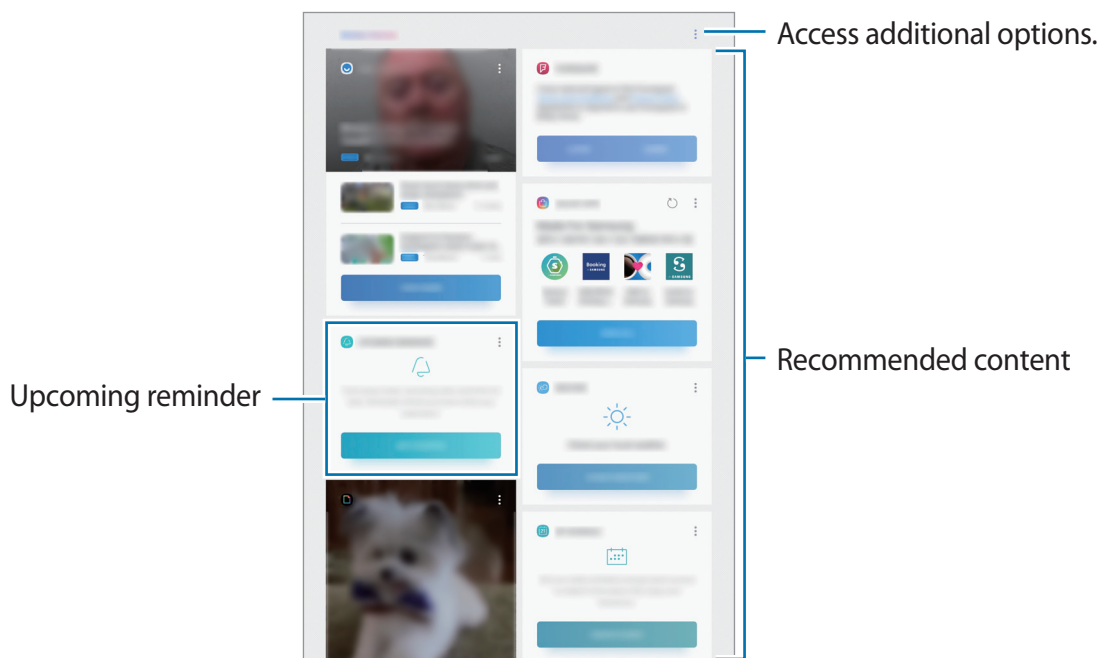
- 4 Tap **DONE** to finish registering your Samsung account.
- 5 Read and agree to the terms and conditions and tap **NEXT**.
The Bixby Home screen will appear.

Bixby Home

On the Bixby Home screen, you can view recommended services and information that Bixby provides by analysing your usage patterns and your routine.

Opening Bixby Home

- 1 Swipe to the right on the Home screen.
The Bixby Home screen will appear.
- 2 Swipe upwards or downwards to view recommended content.



- 3 To close Bixby Home, swipe to the left on the screen.

Using recommended content on Bixby Home





When you open Bixby Home, you can view the content that is frequently updated as Bixby cards. Swipe upwards or downwards to view the Bixby cards.

For example, on the way to the office in the morning, you can view your day's schedule and play your favourite music on the Bixby Home screen. In the evening, you can view alarms and view your friends' feeds.



The content and order of the cards update automatically at a specified interval. To manually update cards, swipe downwards on the screen.

Editing Bixby cards list


- To pin a card to the top of the Bixby Home screen, tap  → **Pin to top**. To unpin a card, tap  → **Unpin**.
- To hide a card from the list, tap  → **Hide for now**.
- To stop displaying a card on the list, tap  → **Don't show again**.

Selecting apps to show as Bixby cards

Add or delete apps to show as cards on the Bixby Home screen.

On the Bixby Home screen, tap  → **Settings** → **Cards** and tap the switches next to items to add or delete them.

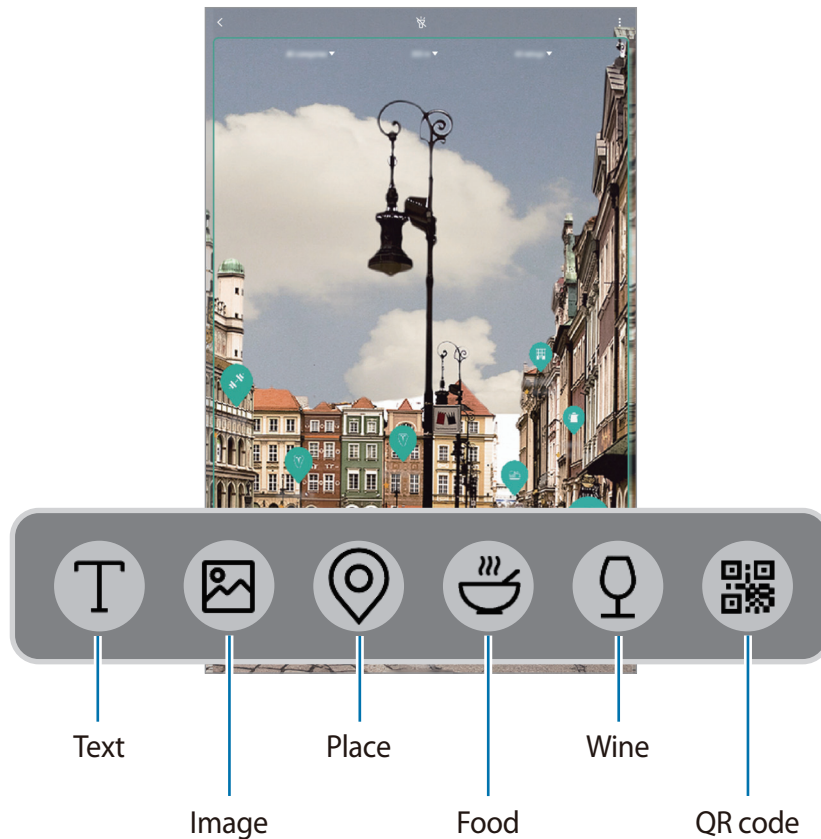


If an app is not installed on the device, you must install it to use it. On the Bixby Home screen, tap  → **Settings** → **Cards** and then download an app.

Bixby Vision



Bixby Vision is a service that provides information, such as similar images, location, translated text, and QR codes. Bixby Vision recognises objects quickly and intuitively even when you do not know its name.

Use the following Bixby Vision features.



- To use this feature, the device must be connected to a Wi-Fi.
- To use this feature, you must register and sign in to your Samsung account.
- The available features and search results may vary depending on the region or service provider.
- This feature may not be available or you may not get correct search results depending on the image size, format, or resolution.
- Samsung is not responsible for the product information provided by Bixby Vision.

Launching Bixby Vision

- 1 Launch Bixby Vision using one of these methods.
 - In the **Camera** app, select the **AUTO** mode and tap .
 - In the **Gallery** app, select an image and tap .
 - In the **Internet** app, tap and hold an image and tap **Bixby Vision**.
 - Open the Air command panel and tap **Bixby Vision**.
 - Open the Air command panel, tap **Smart select**, select an area, and then tap **Bixby Vision**.
 - Capture a screen and select **Bixby Vision** on the toolbar.
 - If you added the Bixby Vision app icon to the Home screen and the Apps screen, launch the **Bixby Vision** app.
- 2 Select the feature you want.
- 3 Keep the object within the screen to recognise it.


When the object is recognised, related information will appear on the screen.

To view more information, tap the feature icon or select a search result.


Translating or extracting text

Recognise and show the translated text on the screen. You can also extract text from a document or text file.

For example, if you want to know what a sign says while travelling abroad, use the Bixby Vision features. The device will translate the sign's text into the language you select.

- 1 When you have a desired image or object, launch Bixby Vision.
- 2 Select  and keep the text within the screen to recognise it.



The translated text will appear on the screen.

 - To extract text, tap . You can share or save the extracted text.
 - To change the source or target language, tap the language settings panel at the top of the screen.

Searching for similar images

Search for images similar to the recognised object online. You can view various images with properties similar to the object, such as colour or shape.


For example, if you want to know the title of a photo or image, use the Bixby Vision features. The device will search for and show you related information or images with similar characteristics.

- 1 When you have a desired image or object, launch Bixby Vision.
- 2 Select  and keep the object within the screen to recognise it.
- 3 Tap  or select a search result on the screen.
The similar images will appear.


Searching for nearby places


Search for information about nearby places by recognising your current location.

For example, if you want to search for cafes nearby, use the Bixby Vision features. The device will search for and show you nearby cafes.

- 1 When you have a desired place, launch Bixby Vision.
- 2 Select  and keep the place within the screen to recognise it.
You can view basic information about nearby places.

When you move your device, nearby places in the direction where the camera is facing will appear on the screen.



 If you are using Bixby Vision with the camera, you can view your current location and weather information. To view your current location on the map, point the camera towards the ground. To view the current weather information, point the camera towards the sky.

- 3 Tap  or select a search result on the screen.
The device will show information of nearby places.

Searching for food information

Search for nutritional information and recipe of food.



For example, if you want to search for nutritional information or recipe, use the Bixby Vision features.

- 1 When you have a desired image or object, launch Bixby Vision.
- 2 Select  and keep the object within the screen to recognise it.
- 3 Tap  or select a search result on the screen.
The information about food will appear.
 - **RECIPE:** Search for the recipe.
 - **VIDEOS:** Search for cooking videos.

Searching for wine information


Detect the information from a wine label and search for information on the wine.

For example, if you find your favourite wine or want to know more about a wine, use the Bixby Vision features.

- 1 When you have a desired image or object, launch Bixby Vision.
- 2 Select  and keep the wine label within the screen to recognise it.
- 3 Tap  or select a search result on the screen.
The information about the wine label will appear.

Reading QR codes

Recognise QR codes and view a variety of information, such as websites, photos, videos, maps, and business cards.

- 1 When you have a desired image or object, launch Bixby Vision.
- 2 Select  and keep the QR code within the screen to recognise it.
The information connected to the QR code will appear.

Reminder

Create reminders to schedule to-do items or to view content later. You will receive notifications at the preset time or location for each reminder.

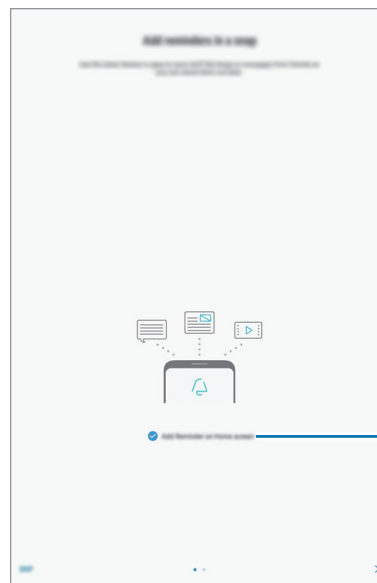
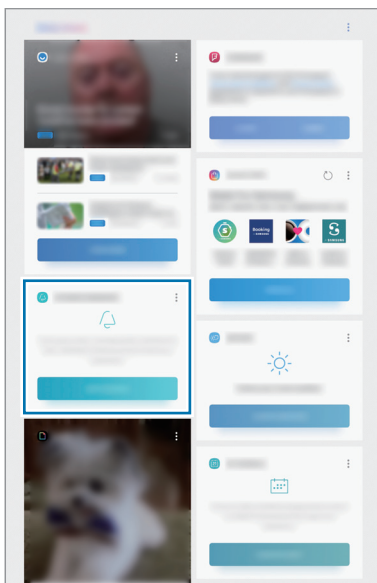


- To receive more accurate notifications, connect to a Wi-Fi.
- To fully use this feature, you must register and sign in to your Samsung account.
- To use location reminders, the GPS feature must be activated.

Starting Reminder

You can start Reminder from Bixby Home.

- 1 Swipe to the right on the Home screen.
The Bixby Home screen will appear.
- 2 Tap **GET STARTED** on the **UPCOMING REMINDERS** card.
The Reminder intro page will appear.



Add the app icon to the Home screen.

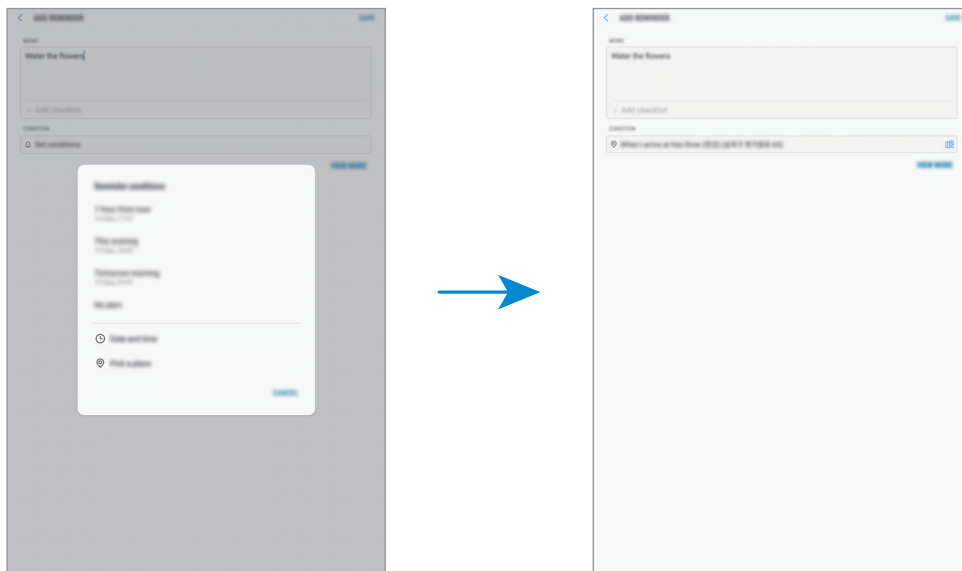
- 3 Tap **START**.
If the **Add Reminder on Home screen** option is ticked, you can launch the **Reminder** app (🔔) from the Home screen.

Creating reminders

Create reminders with various methods. Reminder will alert you if you create a reminder with a specified time or location setting. You can also save various content, such as a single memo or webpage address, and view it later.

For example, create a reminder to alert you to 'Water the flowers when I get home.'

- 1 Launch the **Reminder** app.
- 2 Tap **Write a reminder** and enter 'Water the flowers.'
- 3 Tap **Set conditions** → **Pick a place** and set the location to home.
- 4 Tap **WHEN I ARRIVE AT** → **DONE**.

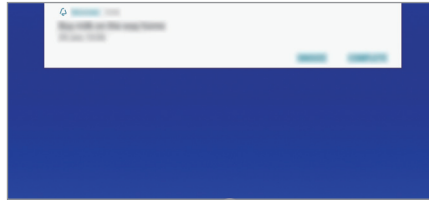


- 5 Tap **SAVE** to save the reminder.

When you arrive at home, the 'Water the flowers' notification will appear.

Checking reminder notifications

At the preset time or location, a notification pop-up window will appear. Tap **COMPLETE** or **SNOOZE**.



Viewing the reminders list

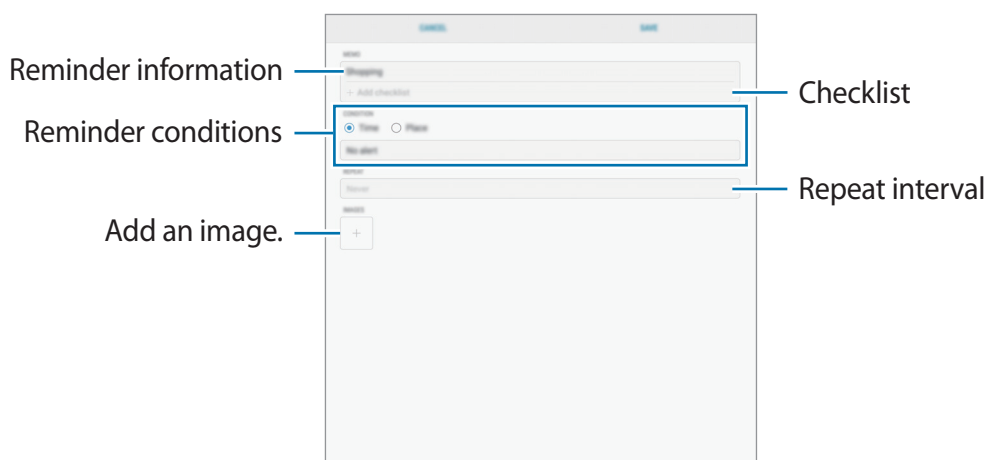
Launch the **Reminder** app to view your reminders list. To view reminder details, select a reminder.



Setting reminder details

Add or edit reminder details, such as frequency, date and time, or location.

- 1 Select a reminder to edit and tap **EDIT**. Alternatively, swipe right on a reminder and tap **Edit**.
- 2 Edit the conditions and tap **SAVE**.



Completing reminders

Mark reminders that you do not need to be reminded of as complete.

On the reminders list, select a reminder and tap **COMPLETE**. Alternatively, swipe to the left on a reminder.

Restoring reminders

Restore reminders that have been completed.

1 On the reminders list, tap  → **Completed** → **EDIT**.

2 Tick items to restore and tap **RESTORE**.

Reminders will be added to the reminders list and you will be reminded at the preset times.

Deleting reminders

To delete a reminder, swipe right on a reminder and tap **Delete**. To delete multiple reminders, tap and hold a reminder, tick reminders to delete, and then tap **DELETE**.

Customising Bixby settings

On the Bixby Home screen, tap  → **Settings**.

- **Samsung account:** View your Samsung account information.
- **Cards:** Select apps to show as cards on the Bixby Home screen.
- **Notifications:** Set to receive notifications about Bixby Home cards, marketing information, and more.
- **Privacy:** Set to use Bixby's interactive and customised services to enhance your experience. You can also delete Bixby interaction data.
- **About Bixby Home:** View the Bixby version and legal information.


Contacts

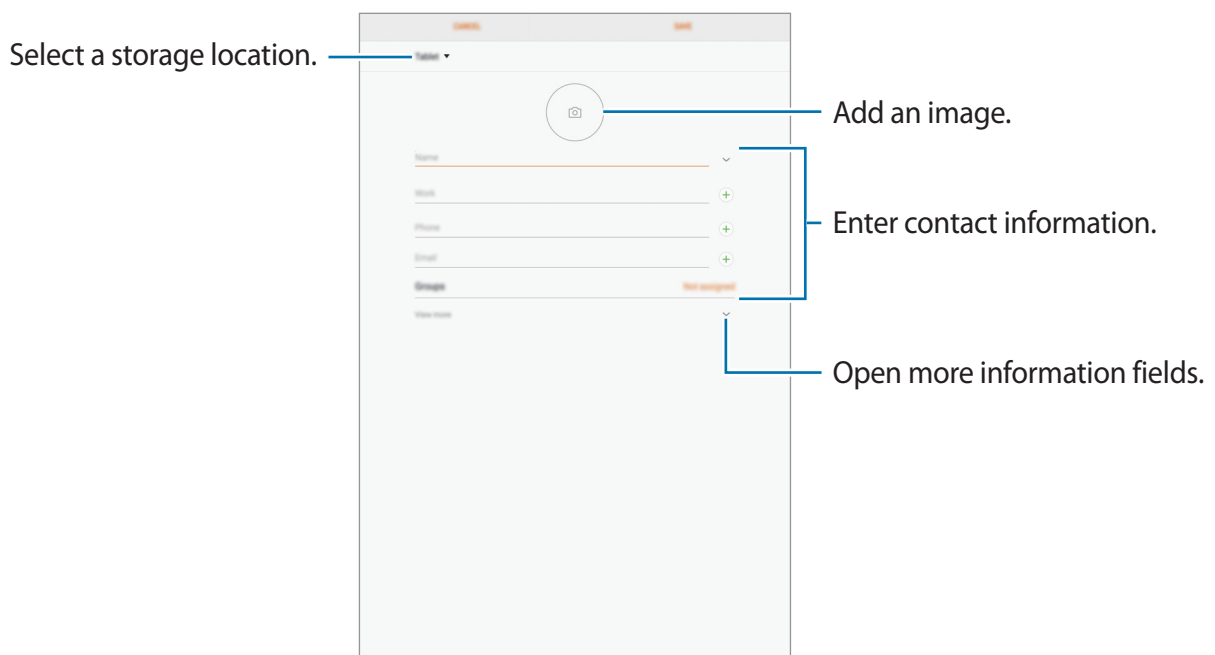
Introduction


Create new contacts or manage contacts on the device.

Adding contacts

Creating a new contact

- 1 Launch the **Contacts** app, tap , and then select a storage location.
- 2 Enter contact information.




 Depending on the selected storage location, the types of information you can save may vary.

- 3 Tap **SAVE**.


Importing contacts

Add contacts by importing them from other storages to your device.

- 1 Launch the **Contacts** app and tap  → **Manage contacts** → **Import/Export contacts** → **IMPORT**.
- 2 Select a storage location to import contacts from.
- 3 Tick VCF files or contacts to import and tap **DONE**.
- 4 Select a storage location to save contacts to and tap **IMPORT**.

Syncing contacts with your web accounts

Sync your device contacts with online contacts saved in your web accounts, such as your Samsung account.

- 1 Launch the **Settings** app, tap **Cloud and accounts** → **Accounts** and select the account to sync with.
- 2 Tap **Sync account** and tap the **Sync Contacts** switch to activate it.
For the Samsung account, tap  → **Sync settings** and tap the **Contacts** switch to activate it.



Searching for contacts

Launch the **Contacts** app.

Use one of the following search methods:


- Scroll up or down the contacts list.
- Drag a finger along the index at the left side of the contacts list to scroll through it quickly.
- Tap the search field at the top of the contacts list and enter search criteria.

Tap the contact. Then take one of the following actions:

-  : Add to favourite contacts.
-  : Compose an email.

Sharing contacts

You can share contacts with others by using various sharing options.


- 1 Launch the **Contacts** app and tap  → **Share**.
- 2 Select contacts and tap **SHARE**.
- 3 Select a sharing method.

Merging duplicate contacts

When you import contacts from other storages, or sync contacts with other accounts, your contacts list may include duplicate contacts. Merge duplicate contacts into one to streamline your contacts list.

- 1 Launch the **Contacts** app and tap  → **Manage contacts** → **Merge contacts**.
- 2 Tick contacts and tap **MERGE**.

Deleting contacts

- 1 Launch the **Contacts** app and tap  → **Delete**.
- 2 Select contacts and tap **DELETE**.

To delete contacts one by one, open the contacts list and tap a contact. Then tap  → **Delete**.

Internet

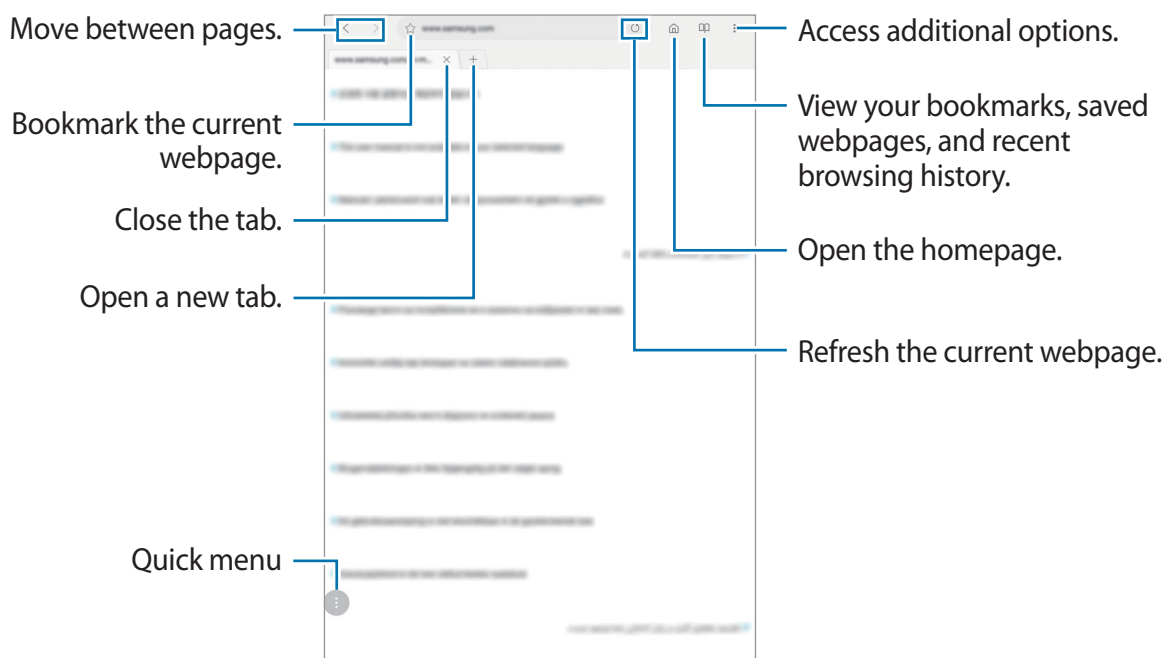
Introduction

Browse the Internet to search for information and bookmark your favourite webpages to access them conveniently.

Browsing webpages

- 1 Open the **Samsung** folder and launch the **Internet** app.
- 2 Tap the address field.
- 3 Enter the web address or a keyword, and then tap **Go**.


To view the toolbars, drag your finger downwards slightly on the screen.



Using secret mode

In secret mode, you can separately manage open tabs, bookmarks, and saved pages. You can lock secret mode using a password and your irises.

Activating secret mode

Tap  → **Turn on Secret mode**. If you are using this feature for the first time, set whether to use a password for secret mode.




In secret mode, you cannot use some features, such as screen capture.

In secret mode, the device will change the colour of the toolbars.

Changing security settings

You can change your password or the lock method.

Tap  → **Settings** → **Privacy** → **Secret mode security** → **Change password**. To set your registered irises as the lock method along with the password, tap the **Irises** switch to activate it. Refer to [Iris recognition](#) for more information about using your irises.

Deactivating secret mode



Tap  → **Turn off Secret mode**.




Email

Setting up email accounts


Set up an email account when opening **Email** for the first time.

- 1 Open the **Samsung** folder and launch the **Email** app.
- 2 Enter the email address and password, and then tap **SIGN IN**.
To manually register an email account, tap **MANUAL SETUP**.
- 3 Follow the on-screen instructions to complete the setup.

To set up another email account, tap  →  → **Add account**.

If you have more than one email account, you can set one as the default account. Tap  →  →  → **Set default account**.

Sending emails



- 1 Tap  to compose an email.
- 2 Add recipients and enter a subject line and text.
- 3 Tap **SEND** to send the mail.

Reading emails

When **Email** is open, the device will automatically retrieve new emails. To manually retrieve emails, swipe downwards on the top of the emails list.

Tap an email on the screen to read it.



If email syncing is disabled, new emails cannot be retrieved. To enable email syncing, tap  →  → your account name, and then tap the **Sync account** switch to activate it.

Camera

Introduction

Take photos and record videos using various modes and settings.

Camera etiquette

- Do not take photos or record videos of other people without their permission.
- Do not take photos or record videos where legally prohibited.
- Do not take photos or record videos in places where you may violate other people's privacy.

Launching Camera



Launch the **Camera** app.

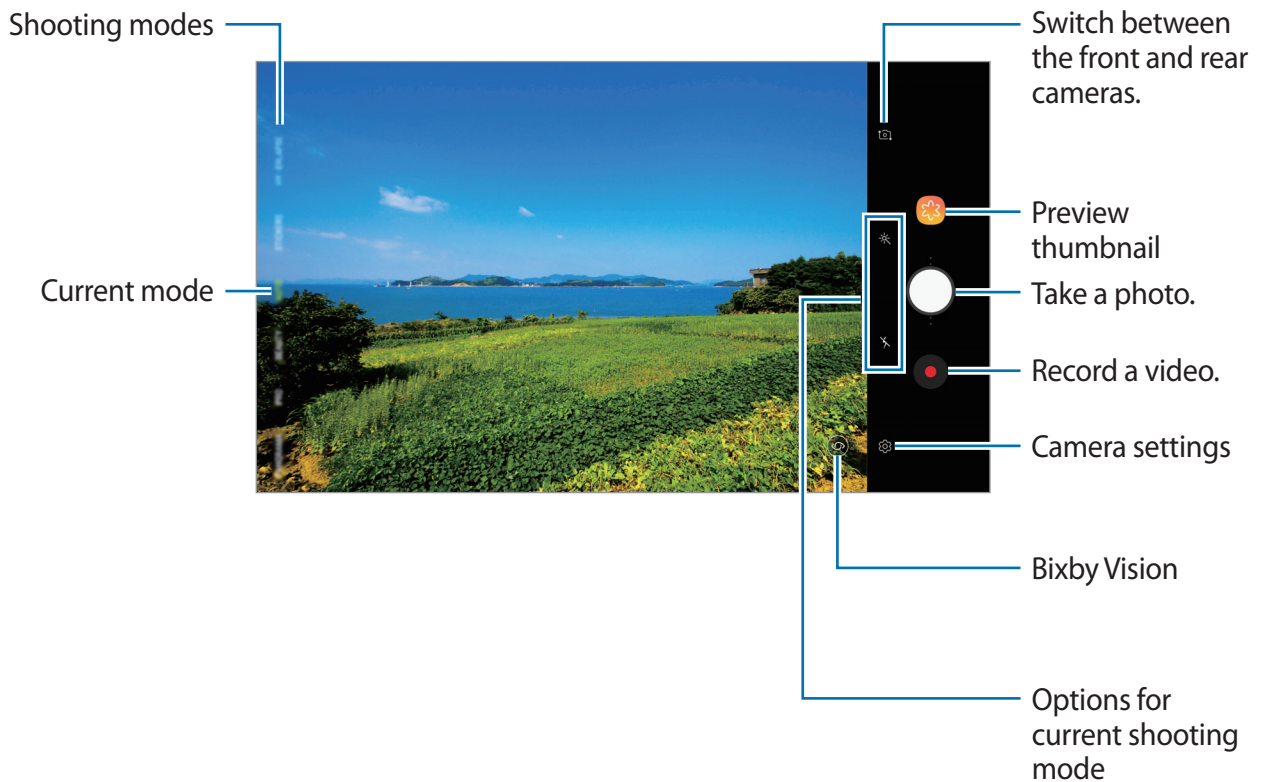





- Some methods may not be available depending on the region or service provider.
- If photos you take appear blurry, clean the camera lens and try again.

Basic shooting

Taking photos or recording videos

- 1 Tap the image on the preview screen where the camera should focus.
- 2 Tap  to take a photo or tap  to record a video.



- To adjust the brightness of photos or videos, tap the screen. When the adjustment bar appears, drag  on the adjustment bar towards **+** or **-**.
- To capture an image from the video while recording, tap .
- To change the focus while recording a video, tap where you want to focus. To use auto focus mode, tap .