

Measurement Report for Device, FRONT, Custom Band, UID 0 -, Channel Low (27559.3MHz) in L-patch of NR Band n261

Device under Test Properties

Model, Manufacturer	Dimensions [mm]	IMEI	DUT Type
, Device	285.0 x 185.0 x 6.0		Tablet

Exposure Conditions

Phantom Section	Position, Test Distance [mm]	Band	Group, UID	Frequency [MHz], Channel Number	Conversion Factor
5G Air	FRONT, 2.00	Custom Band	CW, 0--	27559.3, 27559300	1.0

Hardware Setup

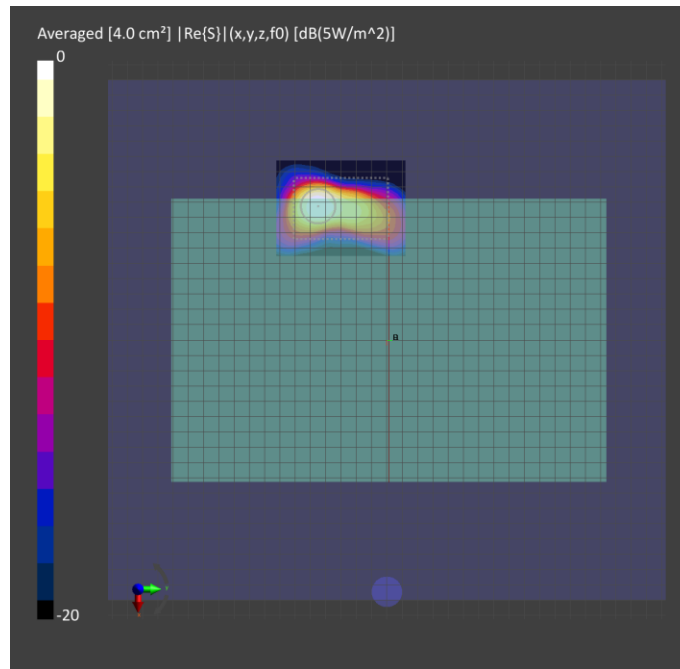
Phantom	Medium	Probe, Calibration Date	DAE, Calibration Date
mmWave- xxxx	--Air-	EUmmWV4 - SN9493_F1-78GHz, 2020-08-18	DAE4 Sn1468, 2020-08-25

Scan Setup

	5G Scan
Grid Extents [mm]	60.0 x 80.0
Grid Steps [lambda]	0.25 x 0.25
Sensor Surface [mm]	2.0
MAIA	N/A

Measurement Results

	5G Scan
Date	2021-04-26
Avg. Area [cm ²]	4.00
psPDn+ [W/m ²]	3.55
psPDtot+ [W/m ²]	5.00
psPDmod+ [W/m ²]	
E _{max} [V/m]	102
Power Drift [dB]	0.12



Measurement Report for Device, BACK, Custom Band, UID 0 -, Channel Low (27559.3MHz) in K-patch of NR Band n261

Device under Test Properties

Model, Manufacturer	Dimensions [mm]	IMEI	DUT Type
, Device	285.0 x 185.0 x 6.0		Tablet

Exposure Conditions

Phantom Section	Position, Test Distance [mm]	Band	Group, UID	Frequency [MHz], Channel Number	Conversion Factor
5G Air	BACK, 2.00	Custom Band	CW, 0--	27559.3, 27559300	1.0

Hardware Setup

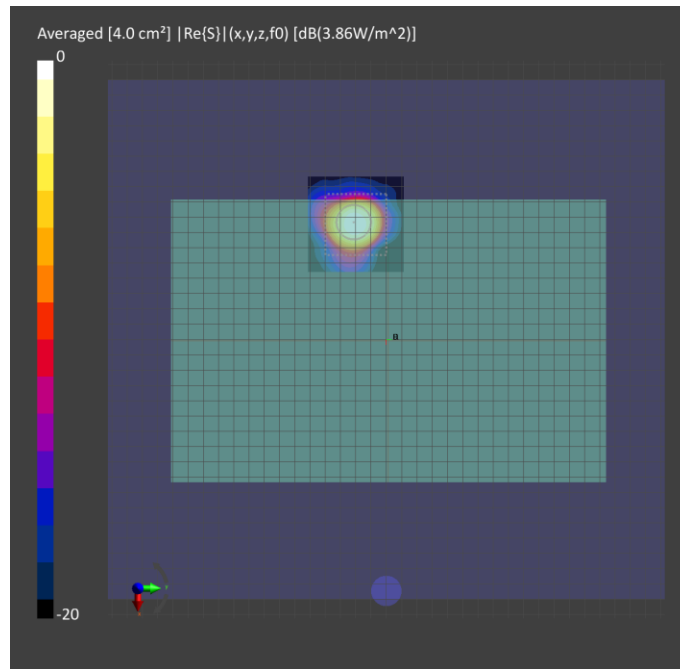
Phantom	Medium	Probe, Calibration Date	DAE, Calibration Date
mmWave- xxxx	--Air-	EUmmWV4 - SN9493_F1-78GHz, 2020-08-18	DAE4 Sn1468, 2020-08-25

Scan Setup

	5G Scan
Grid Extents [mm]	60.0 x 60.0
Grid Steps [lambda]	0.25 x 0.25
Sensor Surface [mm]	2.0
MAIA	N/A

Measurement Results

	5G Scan
Date	2021-05-03
Avg. Area [cm ²]	4.00
psPDn+ [W/m ²]	3.61
psPDtot+ [W/m ²]	3.86
psPDmod+ [W/m ²]	
E _{max} [V/m]	66.7
Power Drift [dB]	-0.07



Measurement Report for Device, FRONT, Custom Band, UID 0 -, Channel Mid (38498.9MHz) in L-patch of NR Band n260

Device under Test Properties

Model, Manufacturer	Dimensions [mm]	IMEI	DUT Type
, Device	285.0 x 185.0 x 6.0		Tablet

Exposure Conditions

Phantom Section	Position, Test Distance [mm]	Band	Group, UID	Frequency [MHz], Channel Number	Conversion Factor
5G Air	FRONT, 2.00	Custom Band	CW, 0--	38498.9, 38498900	1.0

Hardware Setup

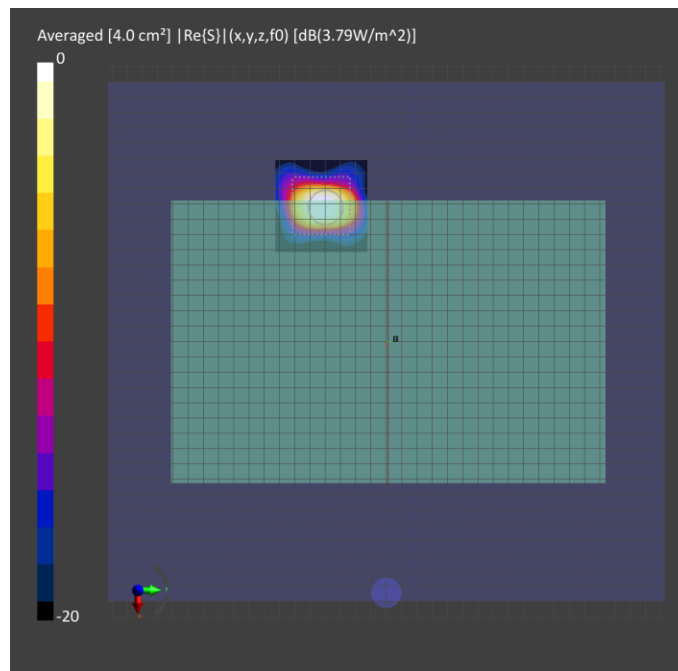
Phantom	Medium	Probe, Calibration Date	DAE, Calibration Date
mmWave- xxxx	--Air-	EUmmWV4 - SN9493_F1-78GHz, 2020-08-18	DAE4 Sn1468, 2020-08-25

Scan Setup

	5G Scan
Grid Extents [mm]	60.0 x 60.0
Grid Steps [lambda]	0.25 x 0.25
Sensor Surface [mm]	2.0
MAIA	N/A

Measurement Results

	5G Scan
Date	2021-04-27
Avg. Area [cm ²]	4.00
psPDn+ [W/m ²]	2.96
psPDtot+ [W/m ²]	3.79
psPDmod+ [W/m ²]	
E _{max} [V/m]	85.0
Power Drift [dB]	0.04



Measurement Report for Device, BACK, Custom Band, UID 0 -, Channel Mid (38498.9MHz) in K-patch of NR Band n260

Device under Test Properties

Model, Manufacturer	Dimensions [mm]	IMEI	DUT Type
, Device	285.0 x 185.0 x 6.0		Tablet

Exposure Conditions

Phantom Section	Position, Test Distance [mm]	Band	Group, UID	Frequency [MHz], Channel Number	Conversion Factor
5G Air	BACK, 2.00	Custom Band	CW, 0--	38498.9, 38498900	1.0

Hardware Setup

Phantom	Medium	Probe, Calibration Date	DAE, Calibration Date
mmWave- xxxx	--Air-	EUmmWV4 - SN9493_F1-78GHz, 2020-08-18	DAE4 Sn1468, 2020-08-25

Scan Setup

	5G Scan
Grid Extents [mm]	70.0 x 70.0
Grid Steps [lambda]	0.25 x 0.25
Sensor Surface [mm]	2.0
MAIA	N/A

Measurement Results

	5G Scan
Date	2021-05-03
Avg. Area [cm ²]	4.00
psPDn+ [W/m ²]	2.94
psPDtot+ [W/m ²]	3.99
psPDmod+ [W/m ²]	
E _{max} [V/m]	77.2
Power Drift [dB]	-0.06

