

# Measurement Report for Device, FRONT, Validation band, UID 0 -, Channel 30000 (30000.0MHz)

## Device under Test Properties

Model, Manufacturer	Dimensions [mm]	IMEI	DUT Type
, Device	100.0 x 100.0 x 100.0		Reference source

## Exposure Conditions

Phantom Section	Position, Test Distance [mm]	Band	Group, UID	Frequency [MHz], Channel Number	Conversion Factor
5G Air	FRONT, 5.55	Validation band	CW, 0--	30000.0, 30000	1.0

## Hardware Setup

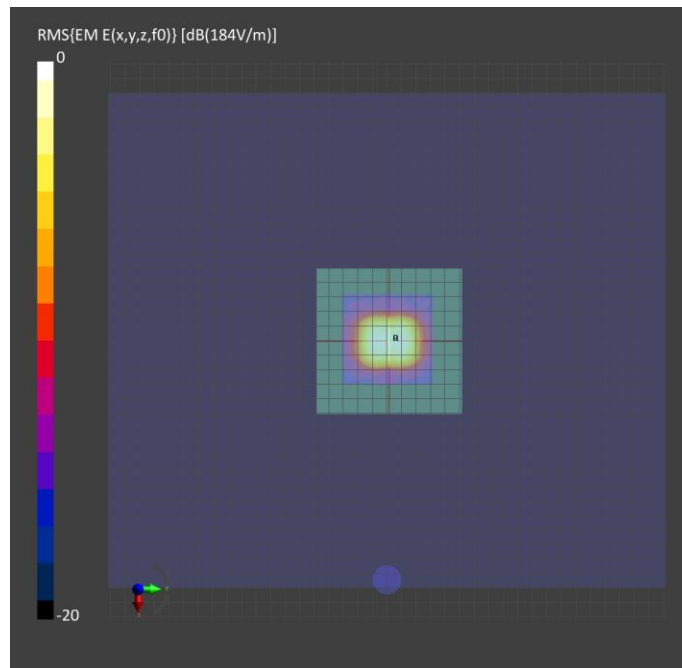
Phantom	Medium	Probe, Calibration Date	DAE, Calibration Date
mmWave- xxxx	--Air-	EUmmWV4 - SN9493_F1-78GHz, 2020-08-18	DAE4 Sn1468, 2020-08-25

## Scan Setup

	5G Scan
Grid Extents [mm]	60.0 x 60.0
Grid Steps [lambda]	0.25 x 0.25
Sensor Surface [mm]	5.55
MAIA	N/A

## Measurement Results

	5G Scan
Date	2021-04-19
Avg. Area [cm <sup>2</sup> ]	4.00
psPDn+ [W/m <sup>2</sup> ]	66.9
psPDtot+ [W/m <sup>2</sup> ]	67.6
psPDmod+ [W/m <sup>2</sup> ]	
E <sub>max</sub> [V/m]	184
Power Drift [dB]	-0.07



# Measurement Report for Device, FRONT, Validation band, UID 0 -, Channel 30000 (30000.0MHz)

## Device under Test Properties

Model, Manufacturer	Dimensions [mm]	IMEI	DUT Type
, Device	100.0 x 100.0 x 100.0		Reference source

## Exposure Conditions

Phantom Section	Position, Test Distance [mm]	Band	Group, UID	Frequency [MHz], Channel Number	Conversion Factor
5G Air	FRONT, 5.55	Validation band	CW, 0--	30000.0, 30000	1.0

## Hardware Setup

Phantom	Medium	Probe, Calibration Date	DAE, Calibration Date
mmWave- xxxx	--Air-	EUmmWV4 - SN9493_F1-78GHz, 2020-08-18	DAE4 Sn1468, 2020-08-25

## Scan Setup

	5G Scan
Grid Extents [mm]	60.0 x 60.0
Grid Steps [lambda]	0.25 x 0.25
Sensor Surface [mm]	5.55
MAIA	N/A

## Measurement Results

	5G Scan
Date	2021-05-07
Avg. Area [cm <sup>2</sup> ]	4.00
psPDn+ [W/m <sup>2</sup> ]	66.9
psPDtot+ [W/m <sup>2</sup> ]	67.7
psPDmod+ [W/m <sup>2</sup> ]	
E <sub>max</sub> [V/m]	185
Power Drift [dB]	0.01

