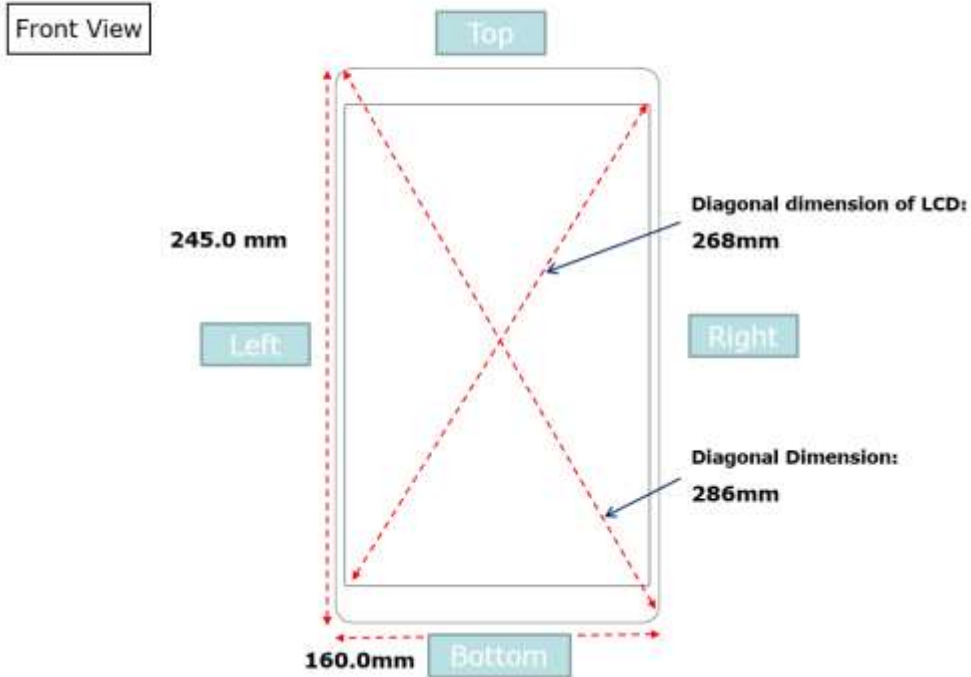


Attachment 8.

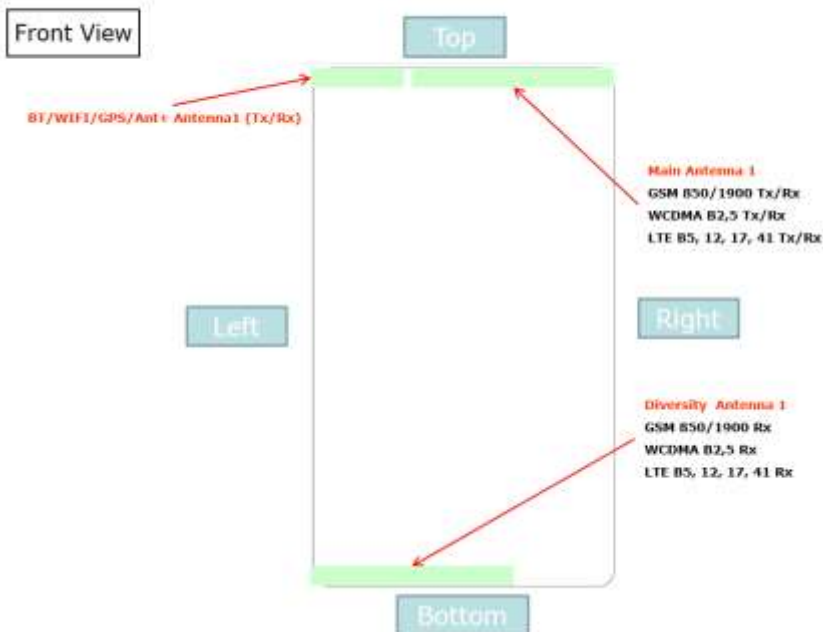
- DUT Antenna Information and SAR Test SETUP PHOTOGRAPHS

DUT Antenna Information

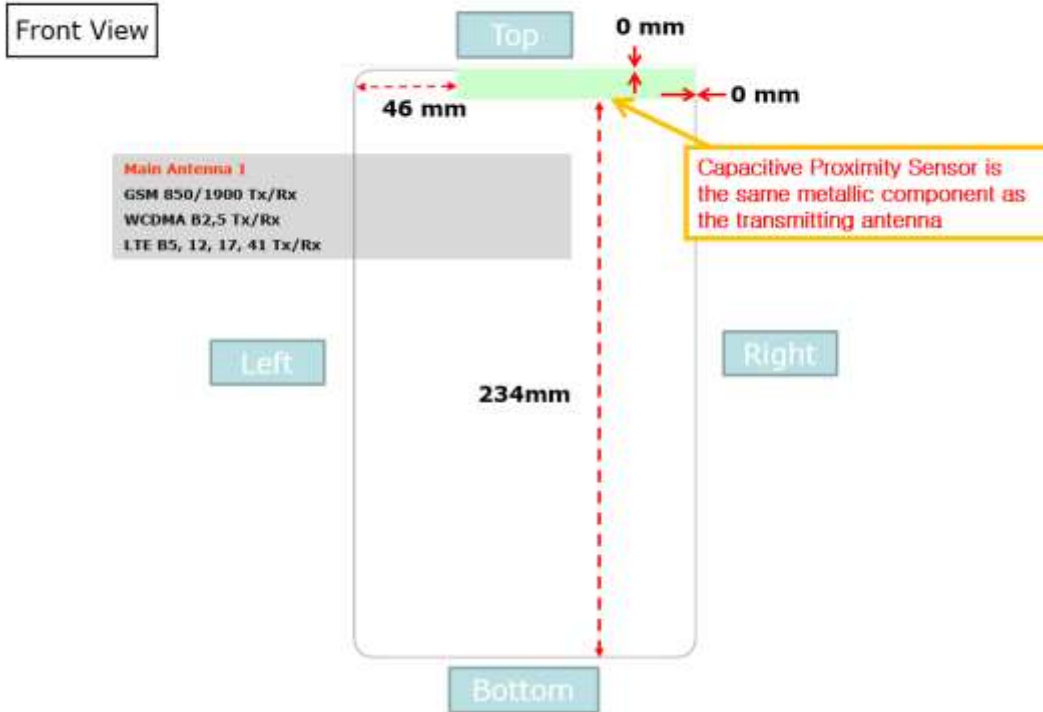
* Diagonal dimension of Display and device



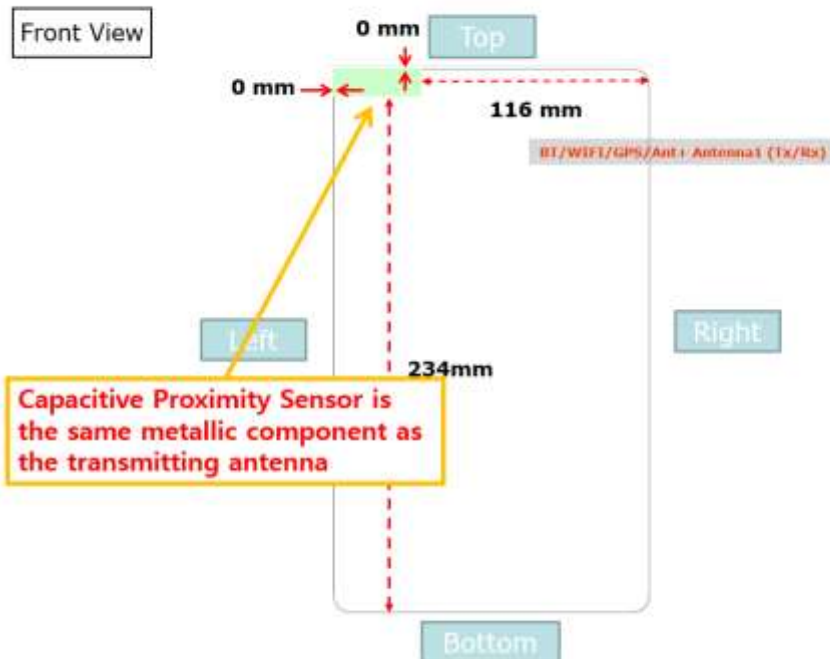
* Placement of each antenna



* Distance between Main antenna and edge



* Distance between BT/WIFI/GPS/Ant+ Antenna and edge



SAR Test Setup Photographs

■ **Test Setup Photo (Body All)**

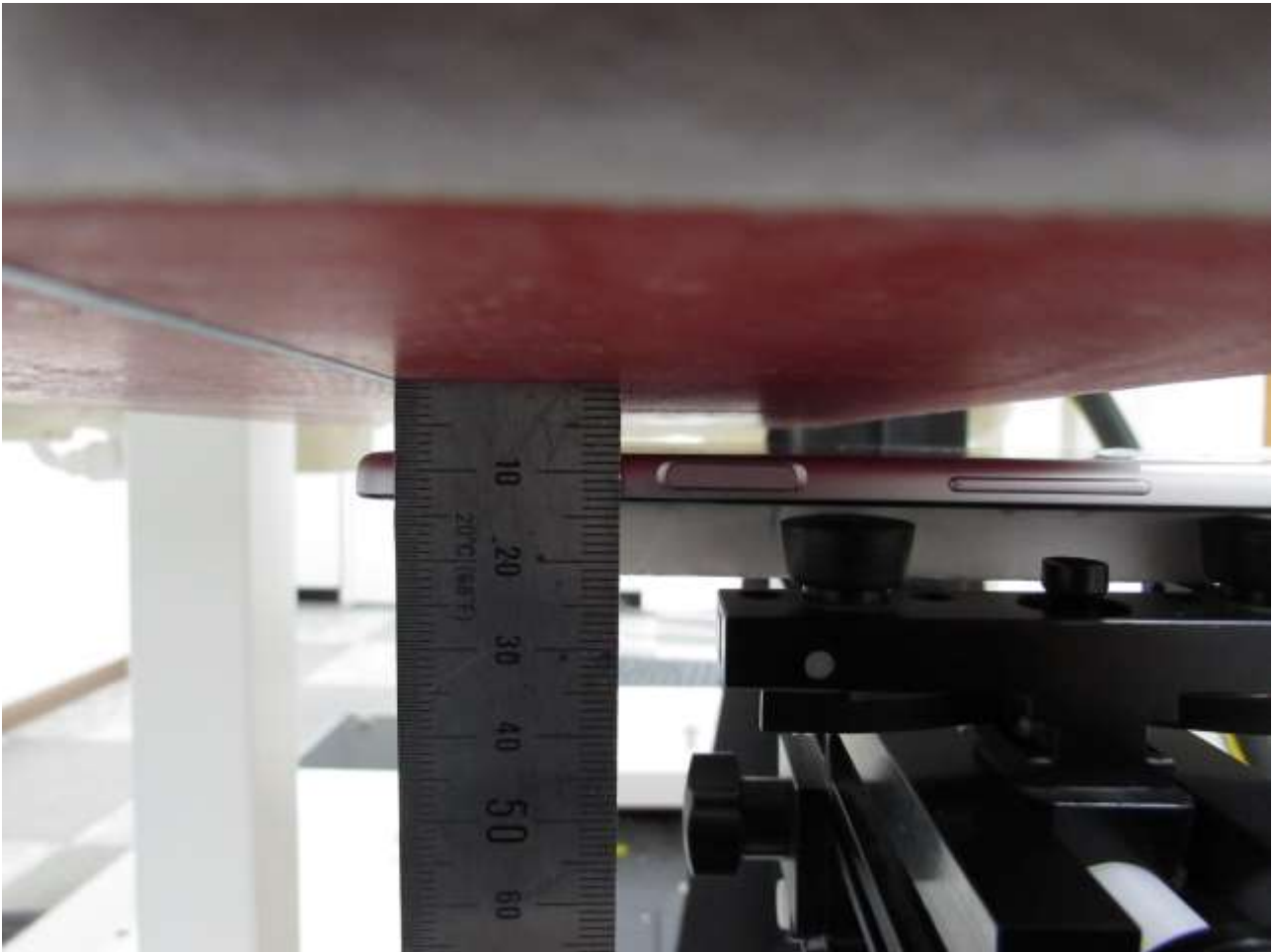


■ **Test Setup Photo (Rear)**



[Distance of 0 mm from the EUT]

■ **Test Setup Photo (Rear)**



[Distance of 8 mm from the EUT]

■ **Test Setup Photo (Rear)**



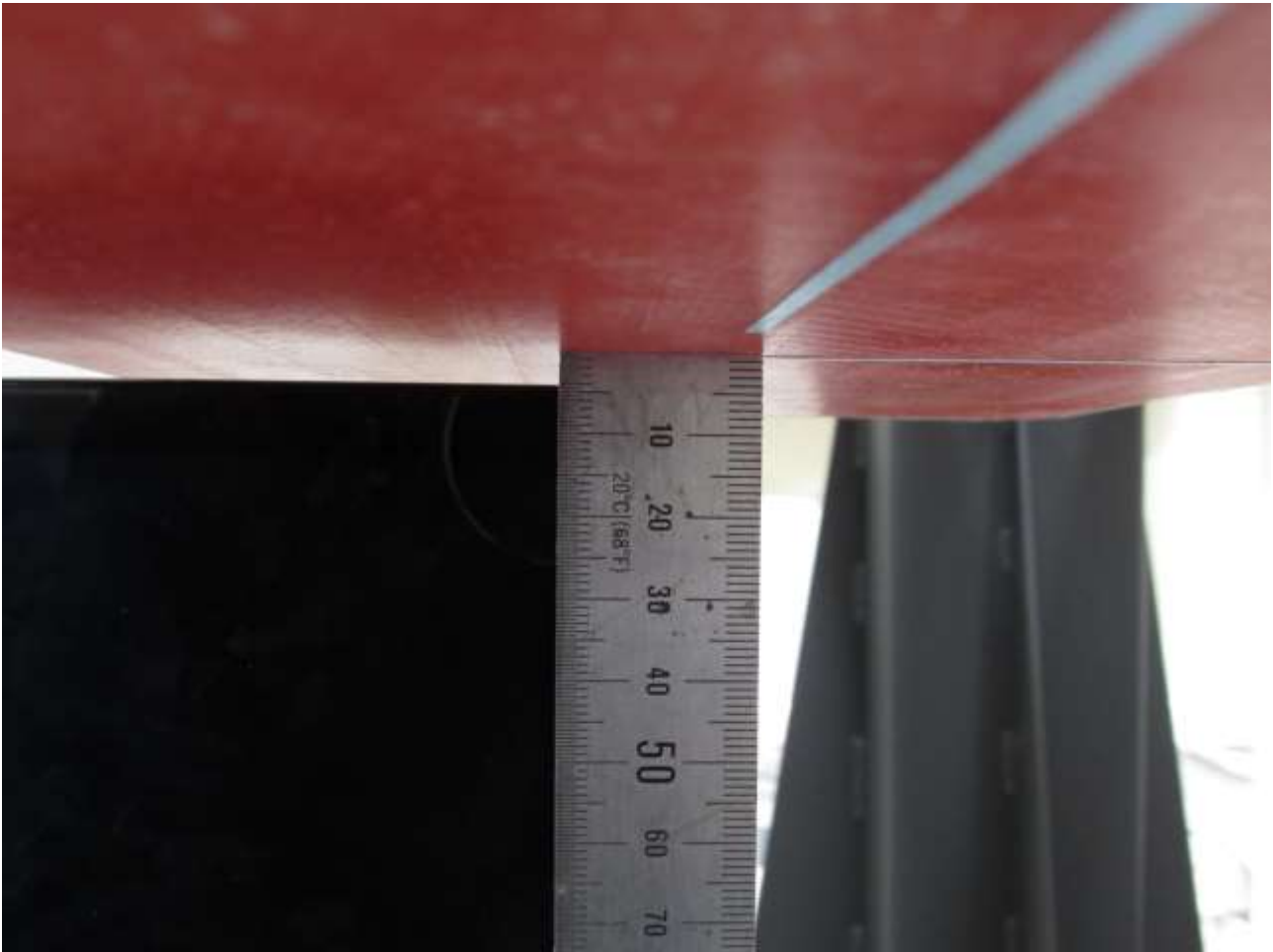
[Distance of 16 mm from the EUT]

■ **Test Setup Photo (Left)**



[Distance of 0 mm from the EUT]

■ **Test Setup Photo (Left)**



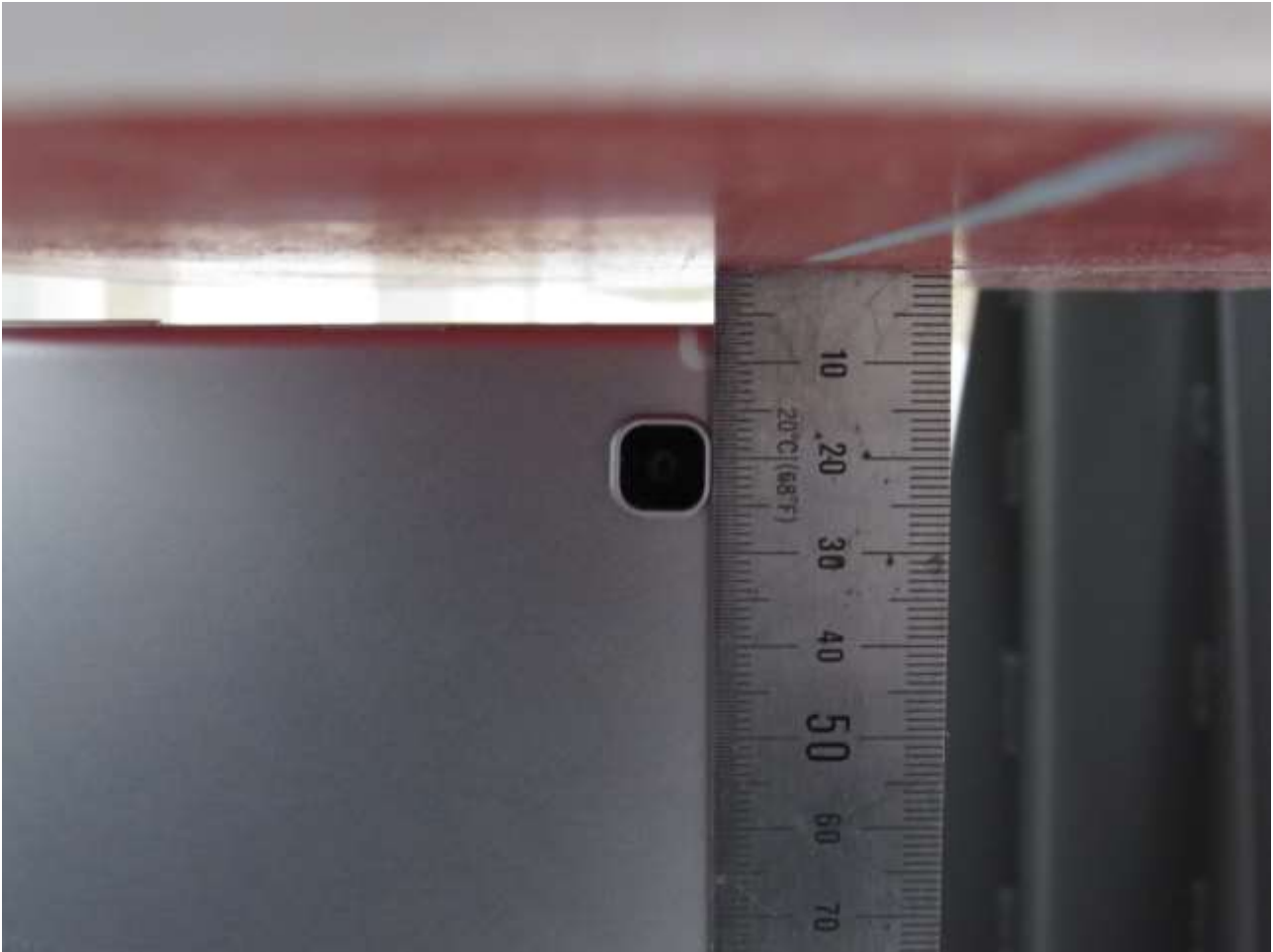
[Distance of 4 mm from the EUT]

■ **Test Setup Photo (Right)**



[Distance of 0 mm from the EUT]

■ **Test Setup Photo (Right)**



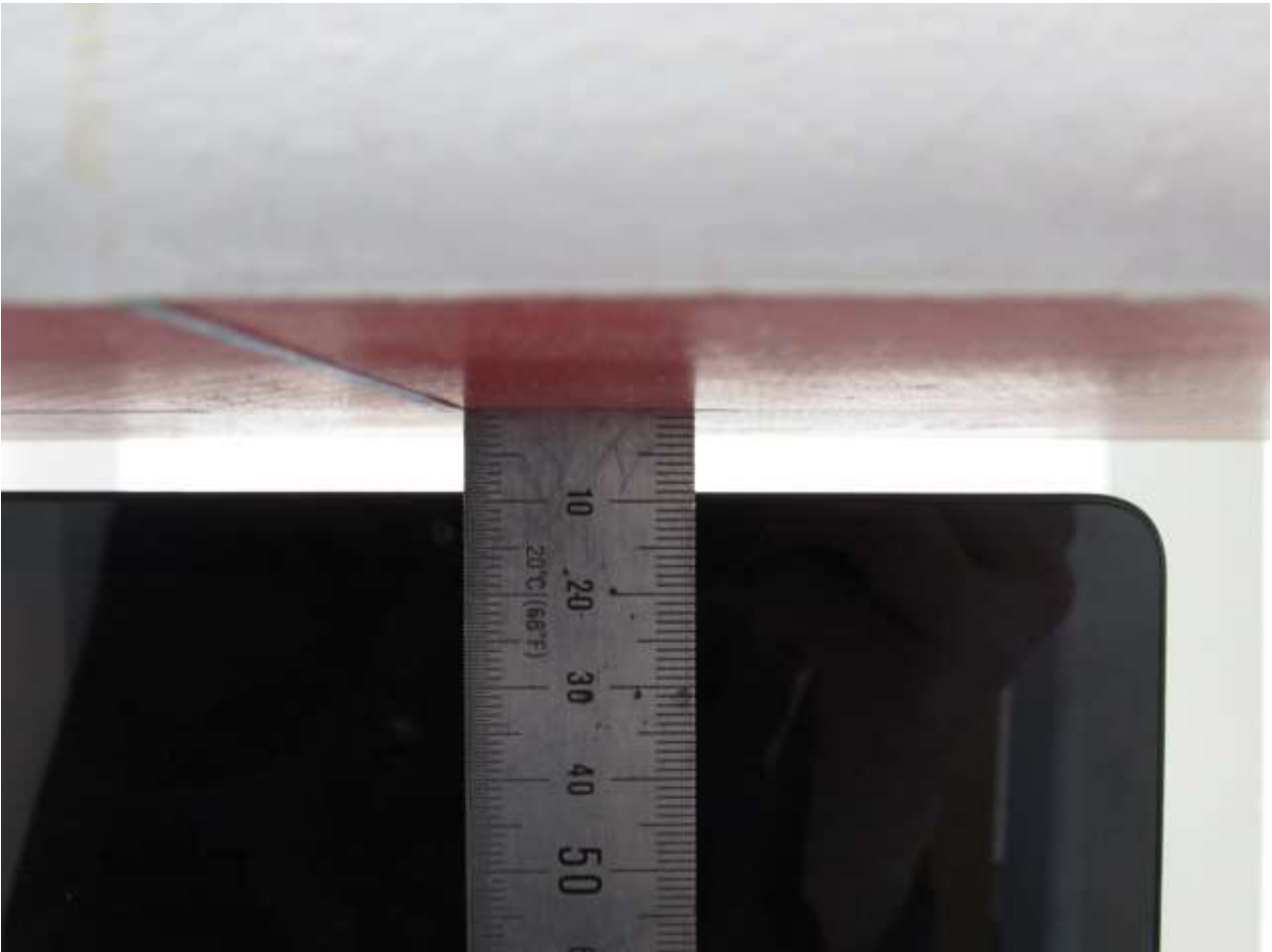
[Distance of 6 mm from the EUT]

■ **Test Setup Photo (Top)**



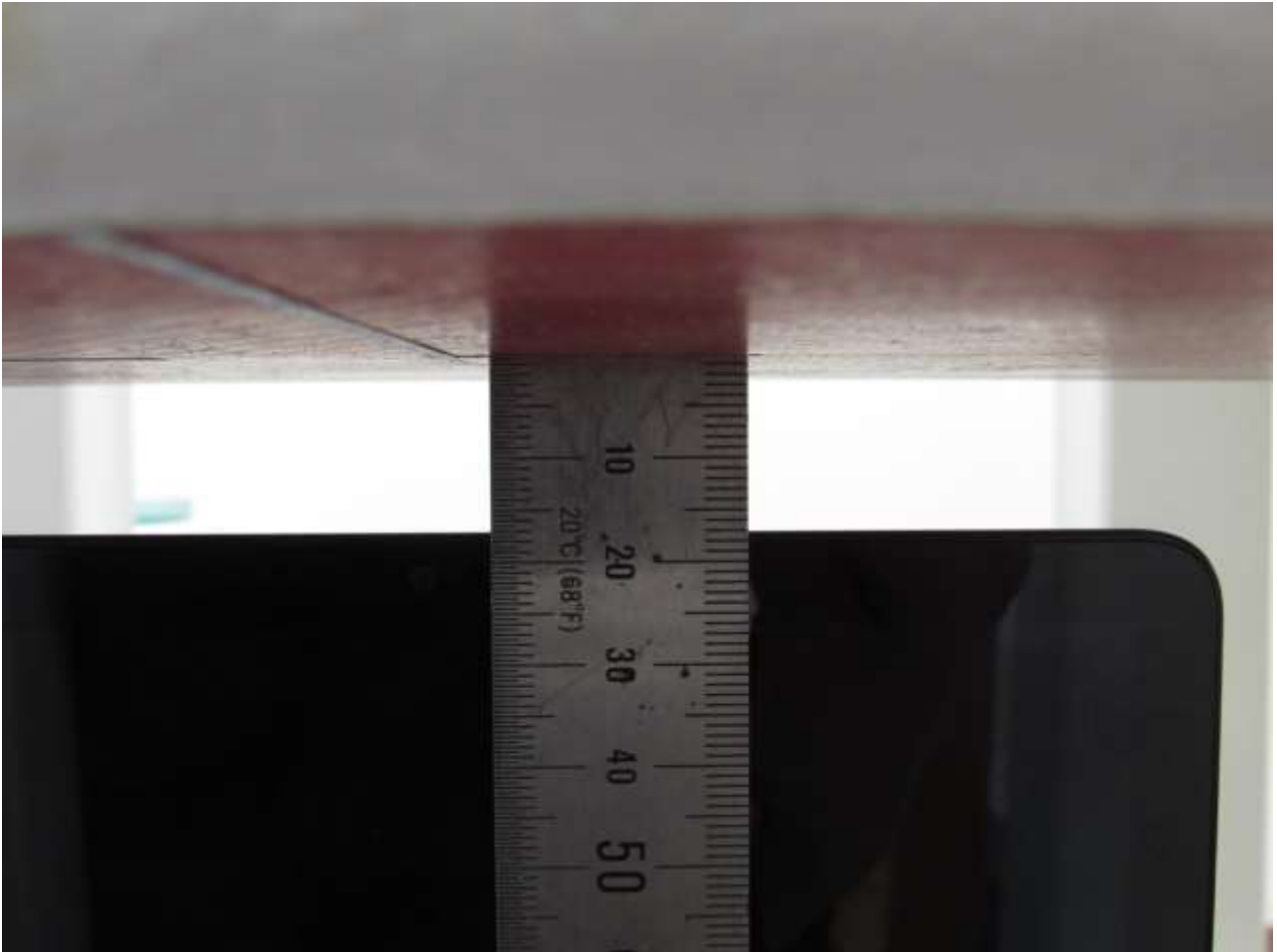
[Distance of 0 mm from the EUT]

■ **Test Setup Photo (Top)**



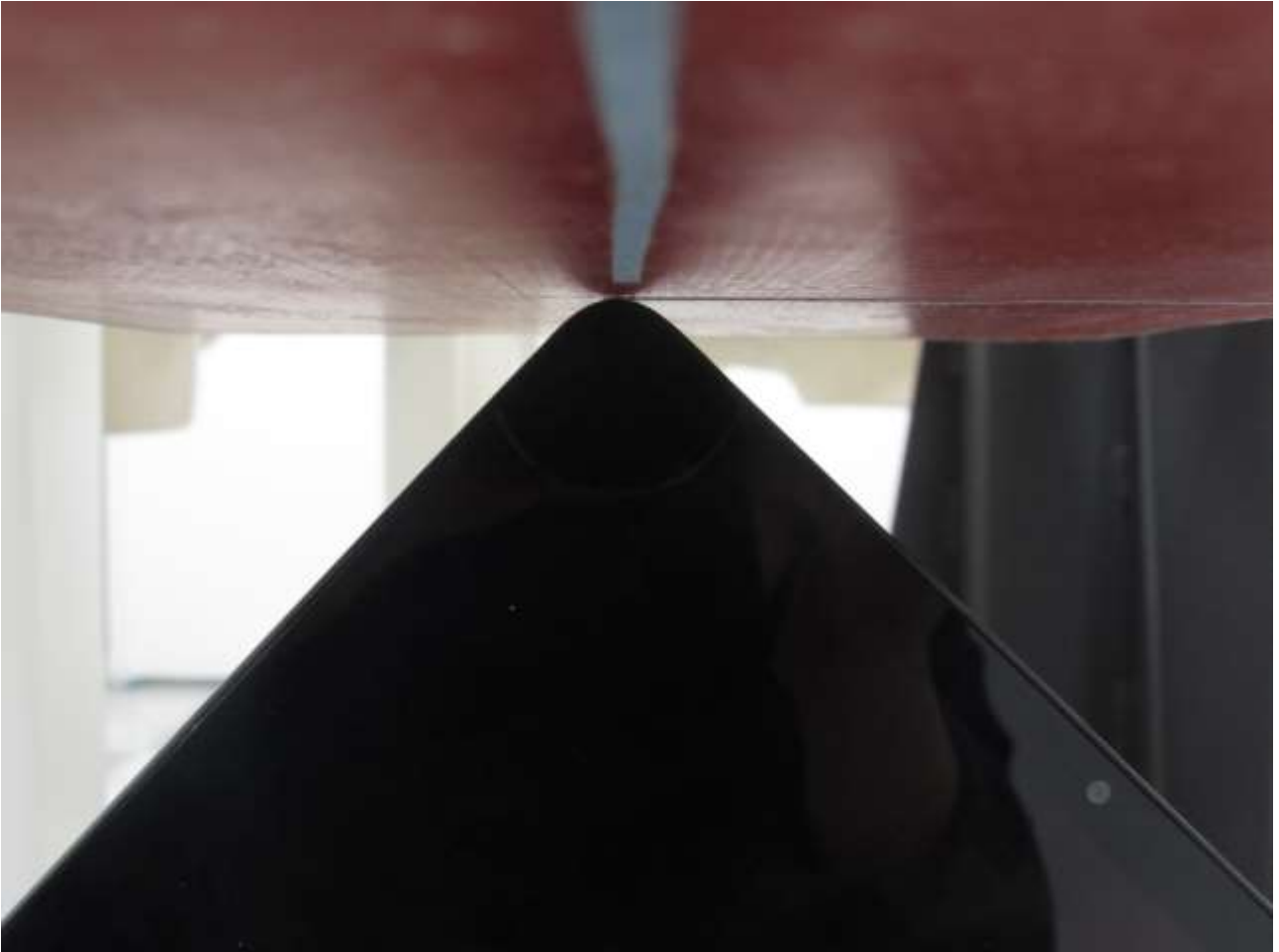
[Distance of 9 mm from the EUT]

■ **Test Setup Photo (Top)**



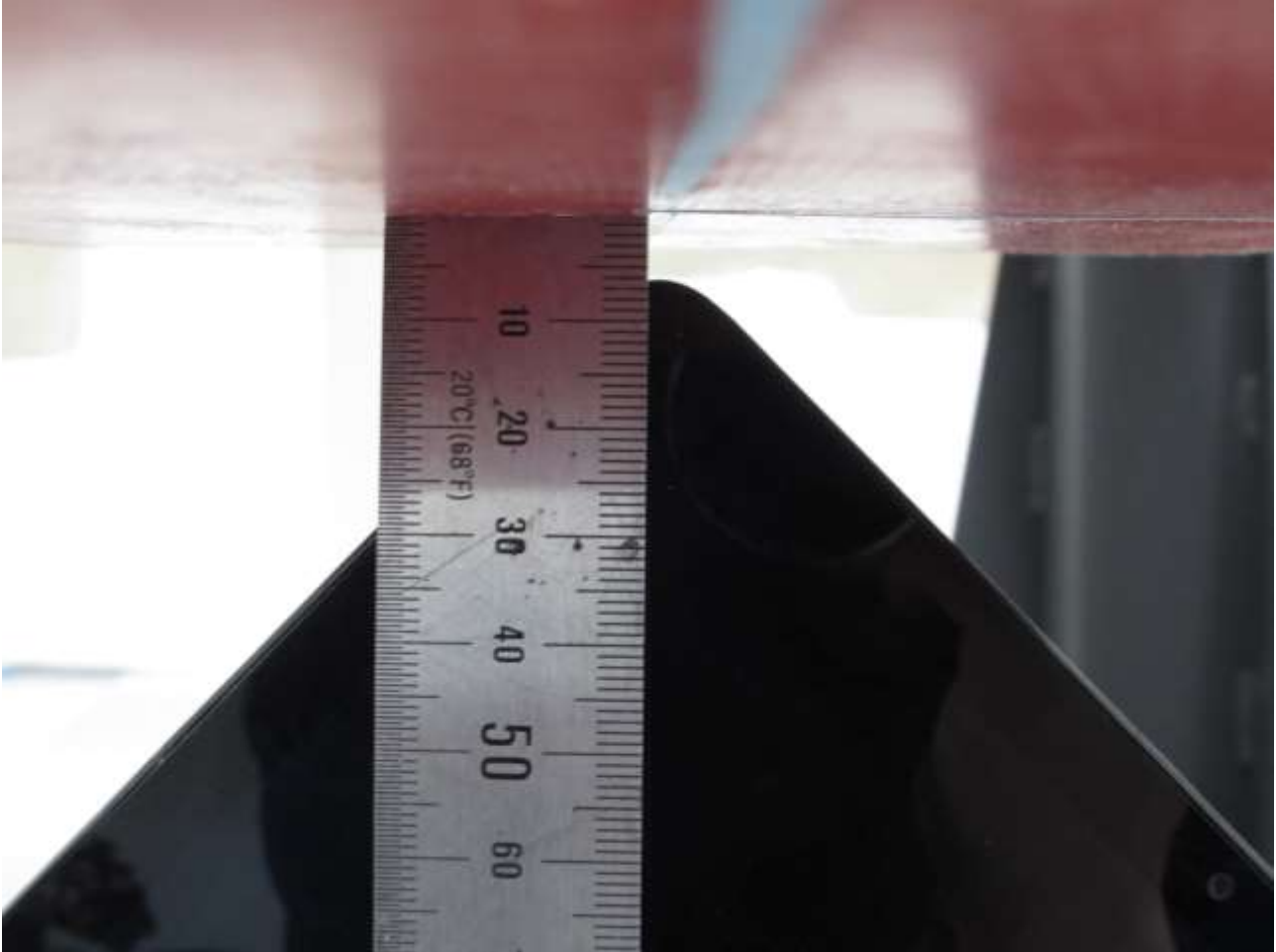
[Distance of 17 mm from the EUT]

■ **Test Setup Photo (Left Corner)**



[Distance of 0 mm from the EUT]

■ **Test Setup Photo (Left Corner)**



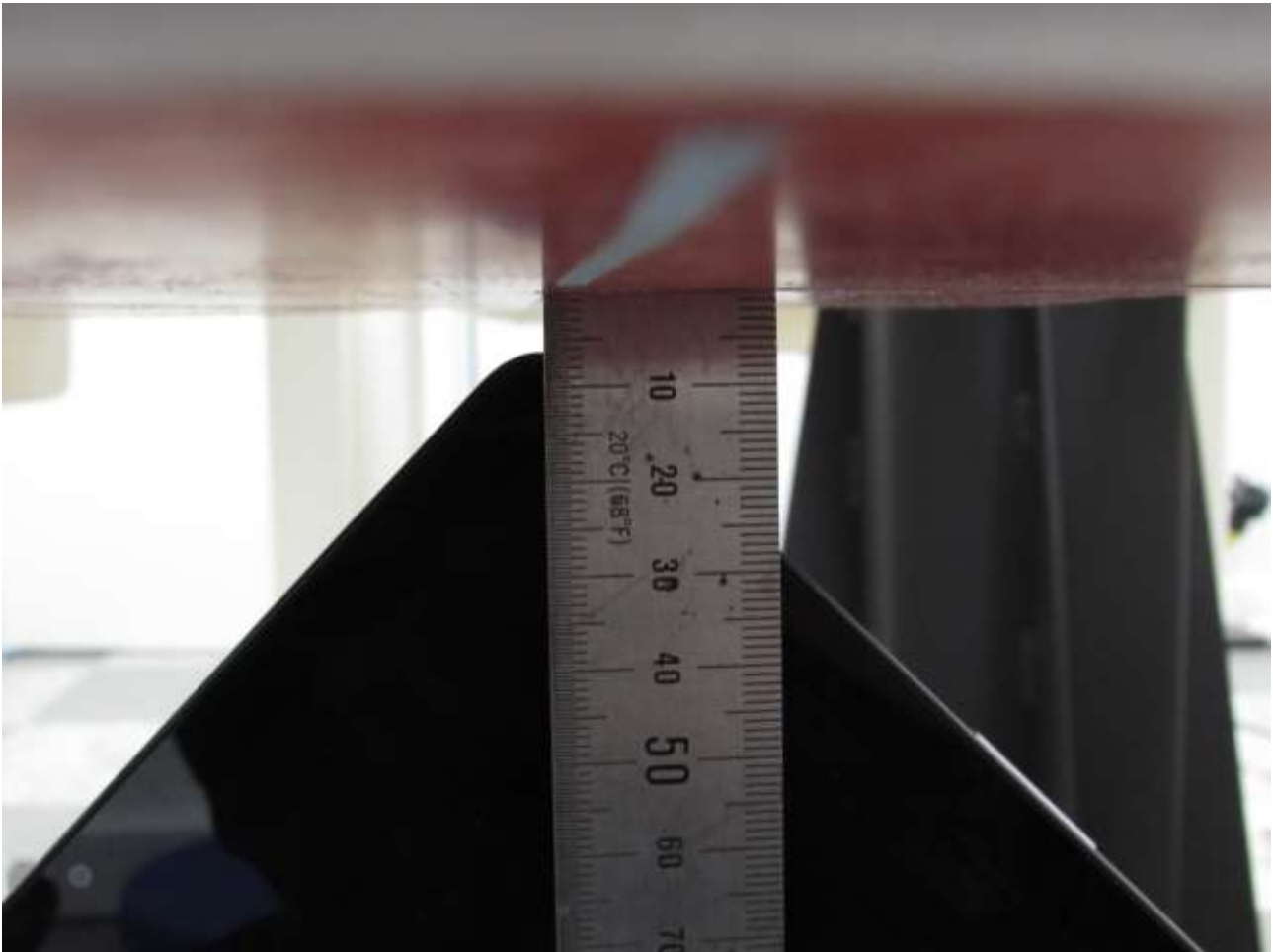
[Distance of 6 mm from the EUT]

■ **Test Setup Photo (Right Corner)**



[Distance of 0 mm from the EUT]

■ **Test Setup Photo (Right Corner)**



[Distance of 6 mm from the EUT]