

WCDMA Band 5_Power Reduction

Frequency: 836.6 MHz; Duty Cycle: 1:1; Room Ambient Temperature: 24.0°C; Liquid Temperature: 23.0°C
 Medium parameters used (interpolated): $f = 836.6$ MHz; $\sigma = 1.016$ S/m; $\epsilon_r = 55.708$; $\rho = 1000$ kg/m³

DASY5 Configuration:

- Area Scan Setting: Find Secondary Maximum Within: 2.0 dB and with a peak SAR value greater than 0.0012W/kg
- Electronics: DAE4 Sn1446; Calibrated: 2015-08-17
- Probe: EX3DV4 - SN7330; ConvF(9.35, 9.35, 9.35); Calibrated: 2015-02-12;
- Sensor-Surface: 2mm (Mechanical Surface Detection), Sensor-Surface: 2.5mm (Mechanical Surface Detection)
- Phantom: ELI v5.0 (20deg probe tilt); Type: QDOVA002AA; Serial: TP:2005

Rear/Rel99_ch 4183 2/Area Scan (9x15x1): Measurement grid: dx=15mm, dy=15mm

Maximum value of SAR (measured) = 0.887 W/kg

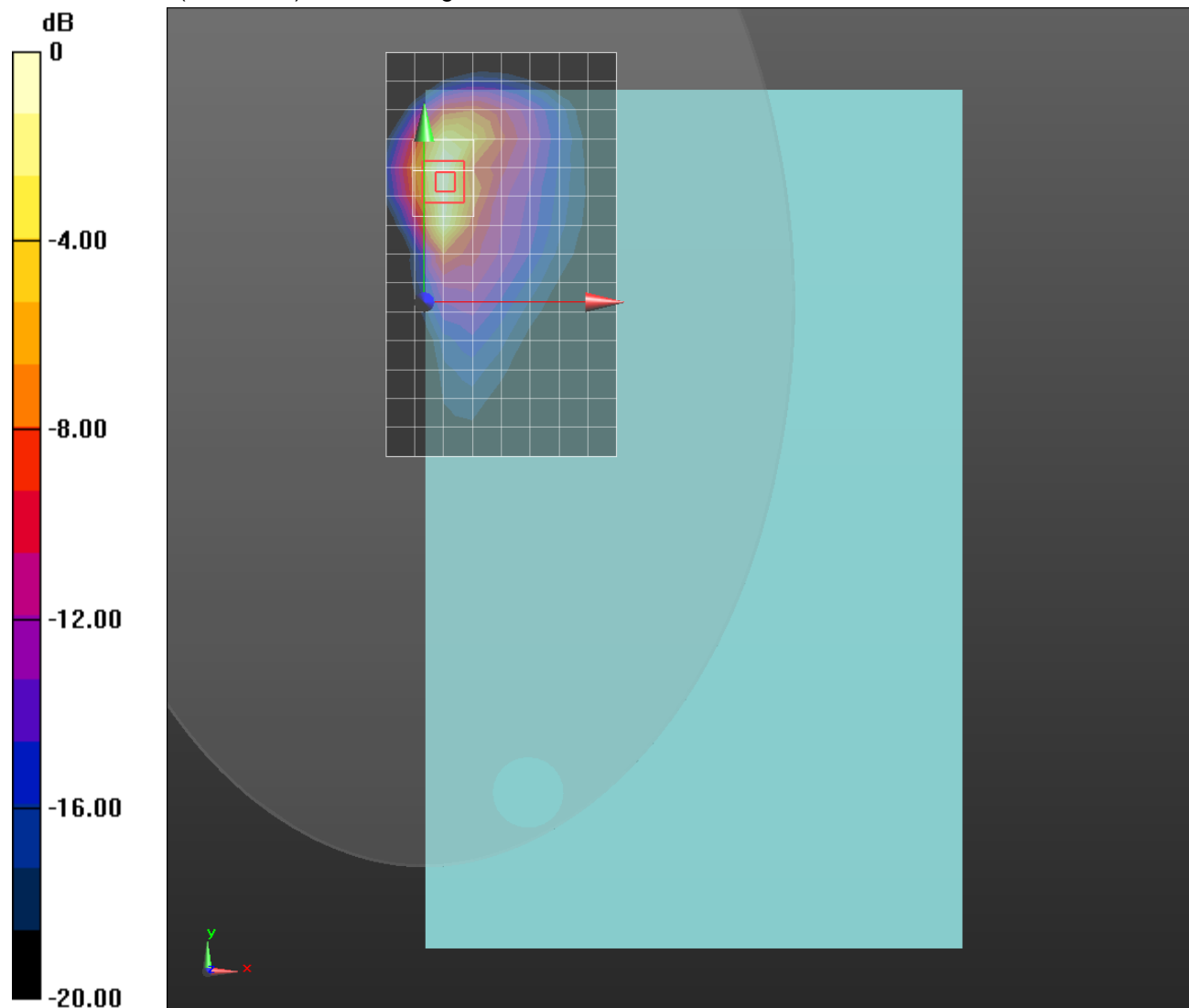
Rear/Rel99_ch 4183 2/Zoom Scan (5x6x7)/Cube 0: Measurement grid: dx=8mm, dy=8mm, dz=5mm

Reference Value = 28.63 V/m; Power Drift = -0.01 dB

Peak SAR (extrapolated) = 1.10 W/kg

SAR(1 g) = 0.554 W/kg; SAR(10 g) = 0.289 W/kg

Maximum value of SAR (measured) = 0.808 W/kg



0 dB = 0.808 W/kg = -0.93 dBW/kg

WCDMA Band 2_Power Reduction

Frequency: 1880 MHz; Duty Cycle: 1:1; Room Ambient Temperature: 24.0°C; Liquid Temperature: 23.0°C

Medium parameters used: $f = 1880$ MHz; $\sigma = 1.554$ S/m; $\epsilon_r = 51.87$; $\rho = 1000$ kg/m³

DASY5 Configuration:

- Area Scan Setting: Find Secondary Maximum Within: 2.0 dB and with a peak SAR value greater than 0.0012W/kg
- Electronics: DAE4 Sn1446; Calibrated: 2015-08-17
- Probe: EX3DV4 - SN7330; ConvF(7.82, 7.82, 7.82); Calibrated: 2015-02-12;
- Sensor-Surface: 2mm (Mechanical Surface Detection), Sensor-Surface: 2.5mm (Mechanical Surface Detection)
- Phantom: ELI Phantom v5.0; Type: QDOVA002AA; Serial: TP:2001

Rear/Rel99_ch 9400/Area Scan (9x13x1): Measurement grid: dx=15mm, dy=15mm

Maximum value of SAR (measured) = 0.888 W/kg

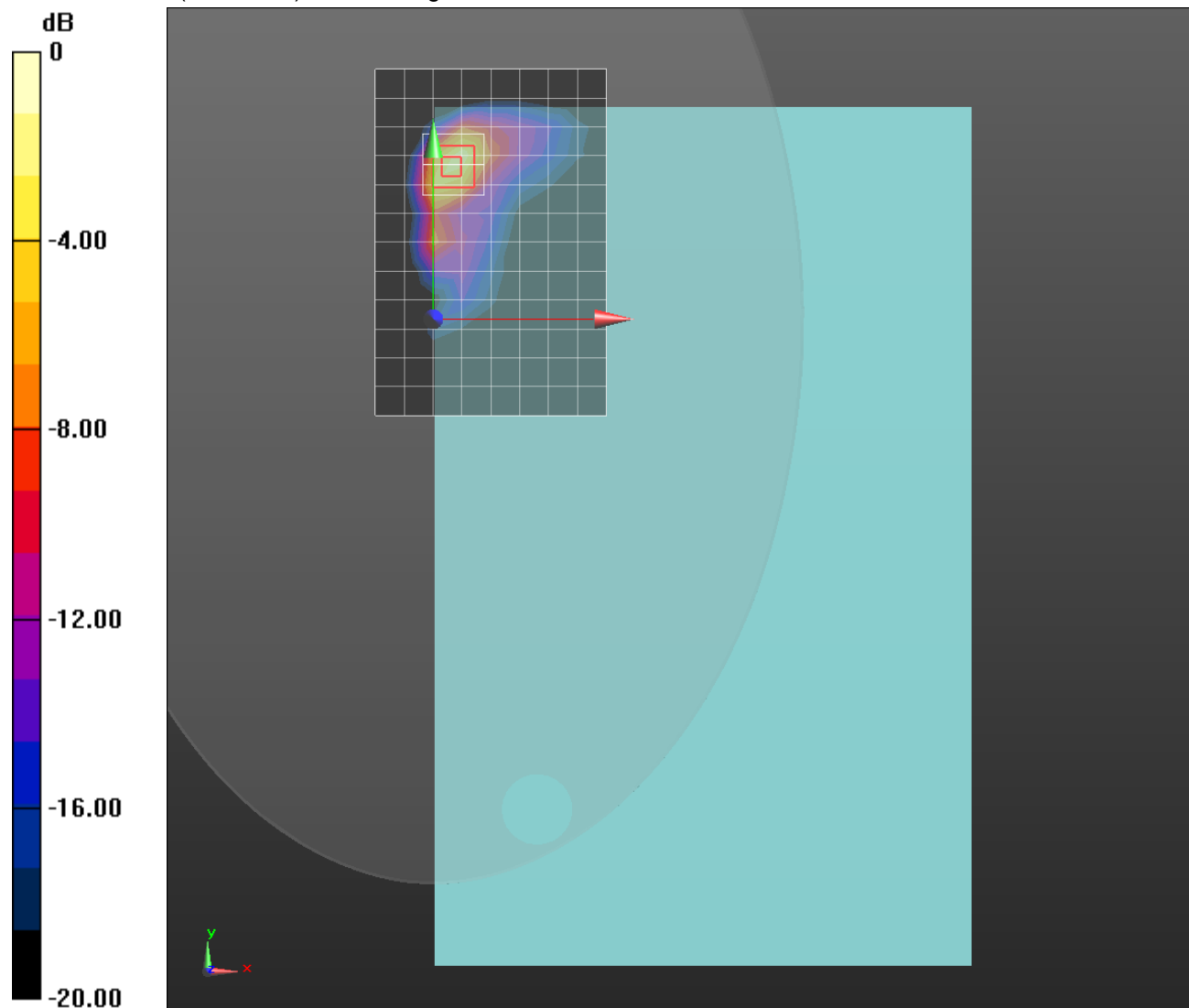
Rear/Rel99_ch 9400/Zoom Scan (5x5x7)/Cube 0: Measurement grid: dx=8mm, dy=8mm, dz=5mm

Reference Value = 23.17 V/m; Power Drift = 0.03 dB

Peak SAR (extrapolated) = 1.71 W/kg

SAR(1 g) = 0.752 W/kg; SAR(10 g) = 0.323 W/kg

Maximum value of SAR (measured) = 1.15 W/kg



0 dB = 1.15 W/kg = 0.61 dBW/kg

LTE Band 2_Power Reduction

Frequency: 1880 MHz; Duty Cycle: 1:1; Room Ambient Temperature: 24.0°C; Liquid Temperature: 23.0°C
 Medium parameters used: $f = 1880 \text{ MHz}$; $\sigma = 1.554 \text{ S/m}$; $\epsilon_r = 51.87$; $\rho = 1000 \text{ kg/m}^3$
 DASY5 Configuration:

- Area Scan Setting: Find Secondary Maximum Within: 2.0 dB and with a peak SAR value greater than 0.0012W/kg
- Electronics: DAE4 Sn1446; Calibrated: 2015-08-17
- Probe: EX3DV4 - SN7330; ConvF(7.82, 7.82, 7.82); Calibrated: 2015-02-12;
- Sensor-Surface: 2mm (Mechanical Surface Detection)
- Phantom: ELI Phantom v5.0; Type: QDOVA002AA; Serial: TP:2001

Rear/QPSK RB 1/49 ch 18900/Area Scan (9x13x1): Measurement grid: dx=15mm, dy=15mm
 Maximum value of SAR (measured) = 0.860 W/kg

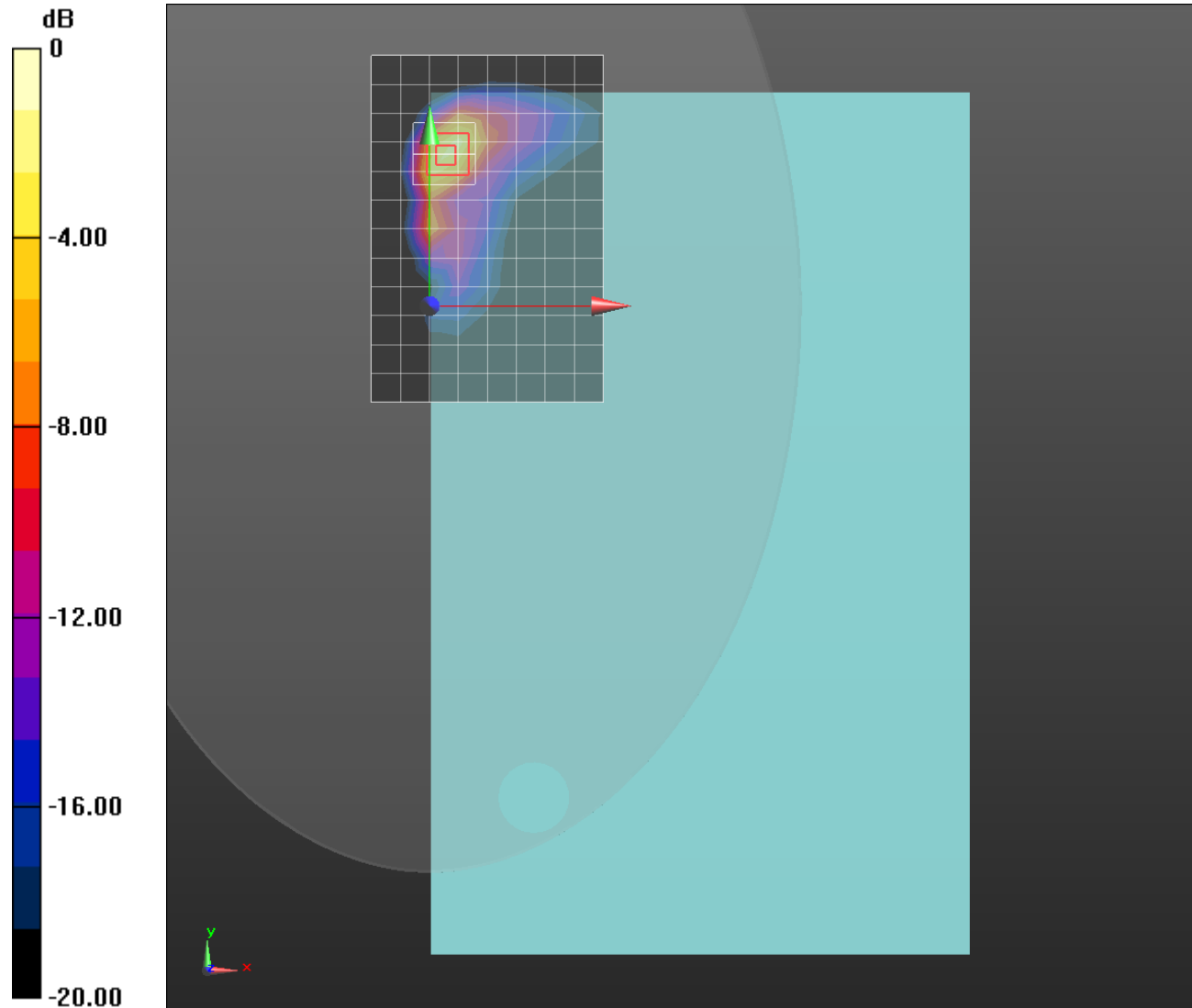
Rear/QPSK RB 1/49 ch 18900/Zoom Scan (5x5x7)/Cube 0: Measurement grid: dx=8mm, dy=8mm, dz=5mm

Reference Value = 23.94 V/m; Power Drift = 0.02 dB

Peak SAR (extrapolated) = 1.75 W/kg

SAR(1 g) = 0.785 W/kg; SAR(10 g) = 0.344 W/kg

Maximum value of SAR (measured) = 1.29 W/kg



0 dB = 1.29 W/kg = 1.11 dBW/kg

LTE Band 4_Power Reduction

Frequency: 1745 MHz; Duty Cycle: 1:1; Room Ambient Temperature: 24.0°C; Liquid Temperature: 23.0°C
 Medium parameters used: $f = 1745 \text{ MHz}$; $\sigma = 1.427 \text{ S/m}$; $\epsilon_r = 52.101$; $\rho = 1000 \text{ kg/m}^3$
 DASY5 Configuration:

- Area Scan Setting: Find Secondary Maximum Within: 2.0 dB and with a peak SAR value greater than 0.0012W/kg
- Electronics: DAE4 Sn1446; Calibrated: 2015-08-17
- Probe: EX3DV4 - SN7330; ConvF(7.98, 7.98, 7.98); Calibrated: 2015-02-12;
- Sensor-Surface: 2mm (Mechanical Surface Detection), Sensor-Surface: 2.5mm (Mechanical Surface Detection)
- Phantom: ELI Phantom v5.0; Type: QDOVA002AA; Serial: TP:2001

Rear/QPSK RB 1/99 ch 20300/Area Scan (9x13x1): Measurement grid: dx=15mm, dy=15mm
 Maximum value of SAR (measured) = 1.46 W/kg

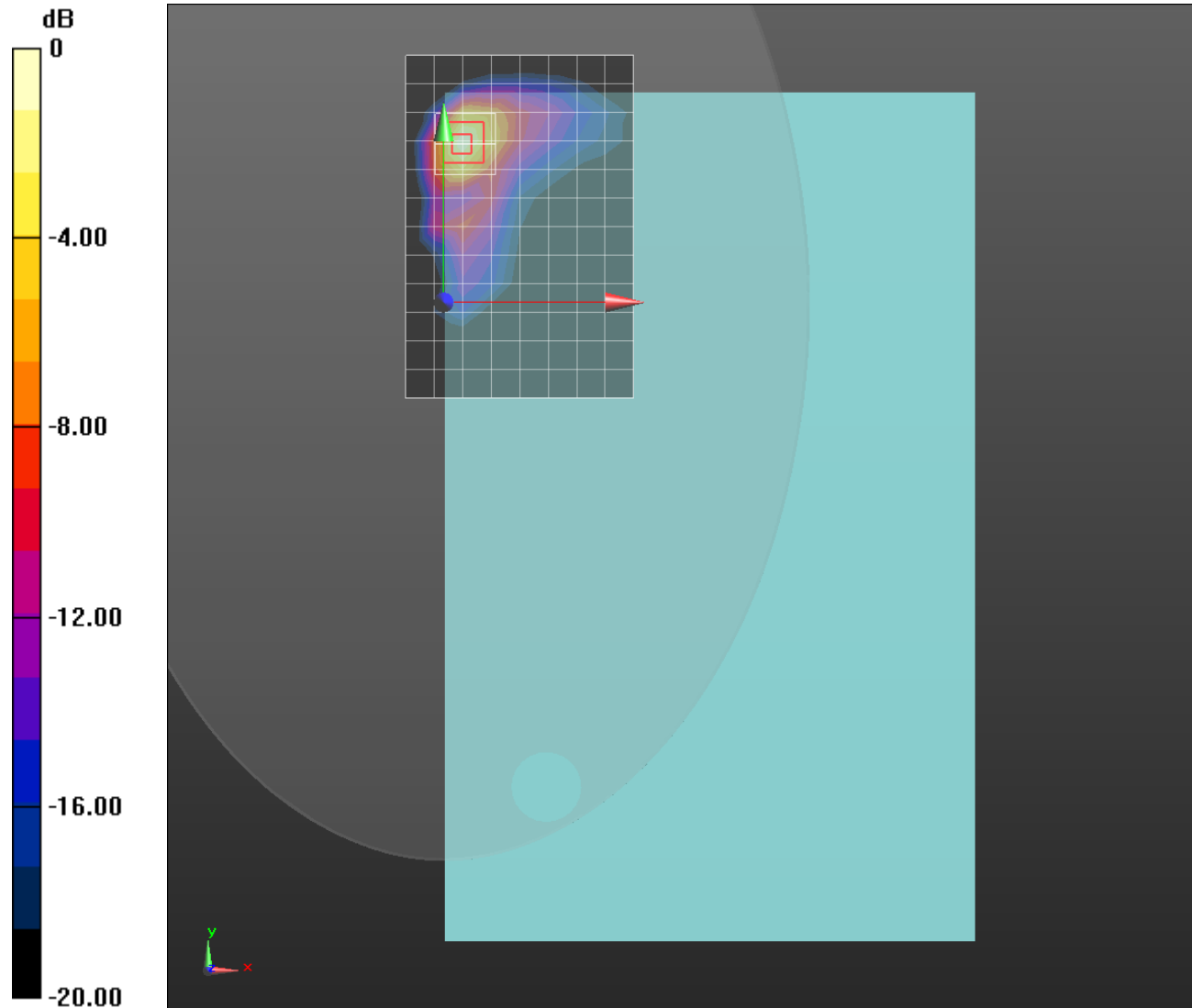
Rear/QPSK RB 1/99 ch 20300/Zoom Scan (5x5x7)/Cube 0: Measurement grid: dx=8mm, dy=8mm, dz=5mm

Reference Value = 31.06 V/m; Power Drift = -0.03 dB

Peak SAR (extrapolated) = 1.98 W/kg

SAR(1 g) = 0.912 W/kg; SAR(10 g) = 0.415 W/kg

Maximum value of SAR (measured) = 1.33 W/kg



0 dB = 1.33 W/kg = 1.24 dBW/kg

LTE Band 5_Power Reduction

Frequency: 836.5 MHz; Duty Cycle: 1:1; Room Ambient Temperature: 24.0°C; Liquid Temperature: 23.0°C
 Medium parameters used (interpolated): $f = 836.5$ MHz; $\sigma = 1.016$ S/m; $\epsilon_r = 55.709$; $\rho = 1000$ kg/m³

DASY5 Configuration:

- Area Scan Setting: Find Secondary Maximum Within: 2.0 dB and with a peak SAR value greater than 0.0012W/kg
- Electronics: DAE4 Sn1446; Calibrated: 2015-08-17
- Probe: EX3DV4 - SN7330; ConvF(9.35, 9.35, 9.35); Calibrated: 2015-02-12;
- Sensor-Surface: 2mm (Mechanical Surface Detection), Sensor-Surface: 2.5mm (Mechanical Surface Detection)
- Phantom: ELI v5.0 (20deg probe tilt); Type: QDOVA002AA; Serial: TP:2005

Rear/QPSK RB 1/49_ch 20525/Area Scan (9x13x1): Measurement grid: dx=15mm, dy=15mm
 Maximum value of SAR (measured) = 0.765 W/kg

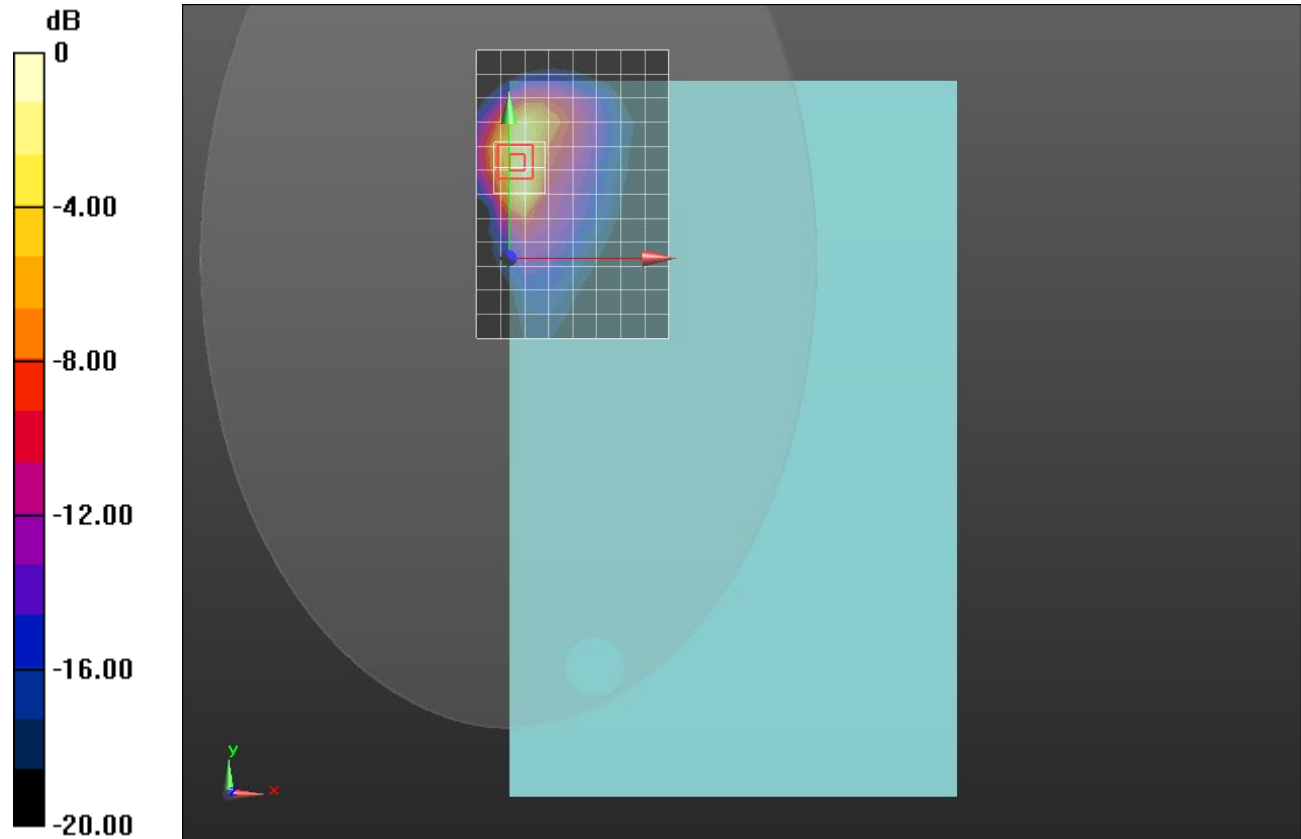
Rear/QPSK RB 1/49_ch 20525/Zoom Scan (5x5x7)/Cube 0: Measurement grid: dx=8mm, dy=8mm, dz=5mm

Reference Value = 26.69 V/m; Power Drift = 0.12 dB

Peak SAR (extrapolated) = 1.11 W/kg

SAR(1 g) = 0.552 W/kg; SAR(10 g) = 0.281 W/kg

Maximum value of SAR (measured) = 0.797 W/kg



0 dB = 0.797 W/kg = -0.99 dBW/kg

LTE Band 12_Reduce_1

Frequency: 707.5 MHz; Duty Cycle: 1:1; Room Ambient Temperature: 24.0°C; Liquid Temperature: 23.0°C
 Medium parameters used (interpolated): $f = 707.5 \text{ MHz}$; $\sigma = 0.936 \text{ S/m}$; $\epsilon_r = 54.014$; $\rho = 1000 \text{ kg/m}^3$

DASY5 Configuration:

- Area Scan Setting: Find Secondary Maximum Within: 2.0 dB and with a peak SAR value greater than 0.0012W/kg
- Electronics: DAE4 Sn1446; Calibrated: 2015-08-17
- Probe: EX3DV4 - SN7330; ConvF(9.46, 9.46, 9.46); Calibrated: 2015-02-12;
- Sensor-Surface: 2mm (Mechanical Surface Detection)
- Phantom: ELI v5.0 (20deg probe tilt); Type: QDOVA002AA; Serial: TP:2005

Rear/QPSK RB 1/0 ch 23095/Area Scan (9x13x1): Measurement grid: dx=15mm, dy=15mm

Maximum value of SAR (measured) = 0.933 W/kg

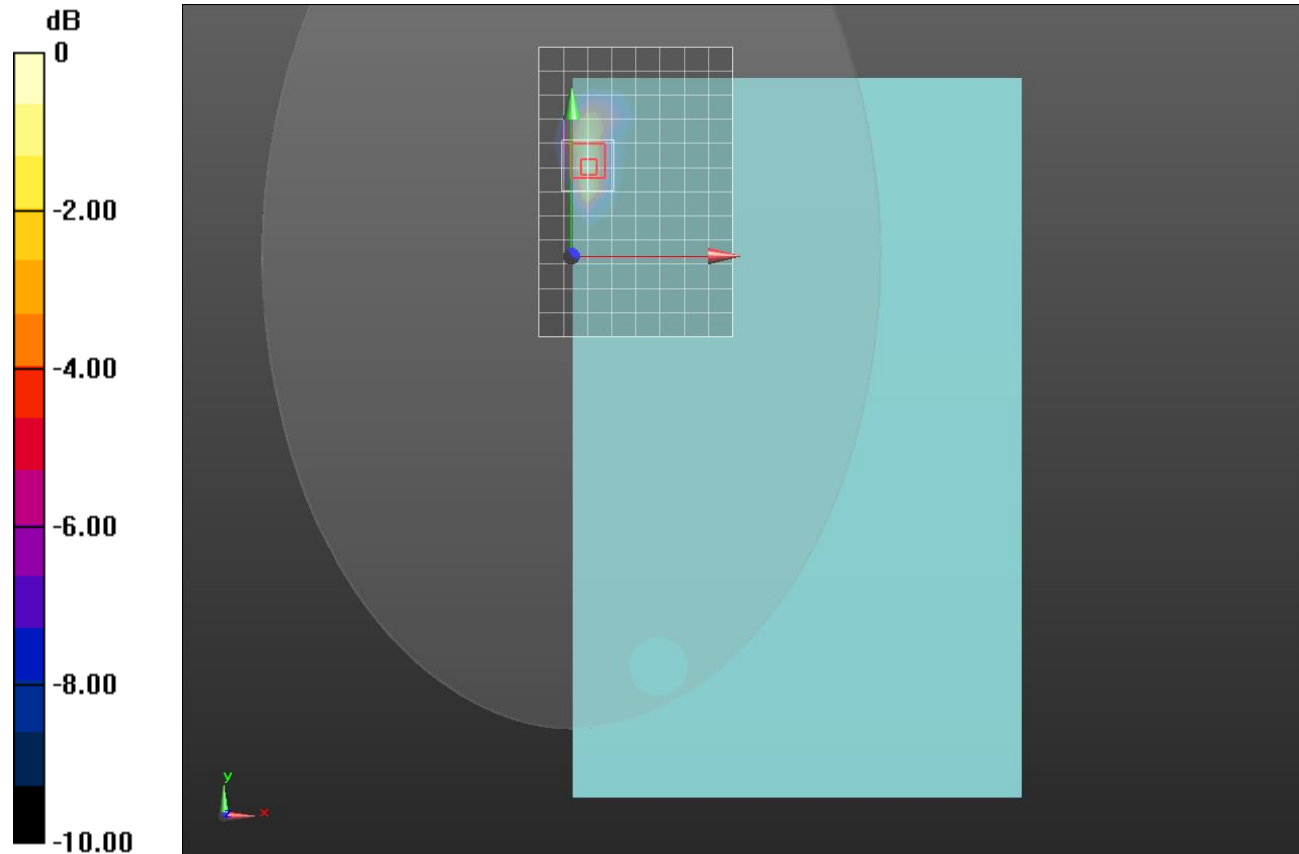
Rear/QPSK RB 1/0 ch 23095/Zoom Scan (5x5x7)/Cube 0: Measurement grid: dx=8mm, dy=8mm, dz=5mm

Reference Value = 32.46 V/m; Power Drift = -0.13 dB

Peak SAR (extrapolated) = 1.29 W/kg

SAR(1 g) = 0.558 W/kg; SAR(10 g) = 0.283 W/kg

Maximum value of SAR (measured) = 0.930 W/kg



0 dB = 0.930 W/kg = -0.32 dBW/kg

LTE Band 30 Power Reduction

Frequency: 2310 MHz; Duty Cycle: 1:1; Room Ambient Temperature: 24.0°C; Liquid Temperature: 23.0°C

Medium parameters used: $f = 2310 \text{ MHz}$; $\sigma = 1.857 \text{ S/m}$; $\epsilon_r = 50.639$; $\rho = 1000 \text{ kg/m}^3$

DASY5 Configuration:

- Area Scan Setting: Find Secondary Maximum Within: 2.0 dB and with a peak SAR value greater than 0.0012W/kg
- Electronics: DAE3 Sn479; Calibrated: 2014-10-15
- Probe: EX3DV4 - SN7376; ConvF(7.54, 7.54, 7.54); Calibrated: 2015-09-02;
- Sensor-Surface: 2.5mm (Mechanical Surface Detection)
- Phantom: ELI v6.0; Type: QDOVA003AA; Serial: TP:2013

Rear/QPSK 1/49_ch 27710/Area Scan (6x17x1): Measurement grid: dx=15mm, dy=15mm

Maximum value of SAR (measured) = 0.753 W/kg

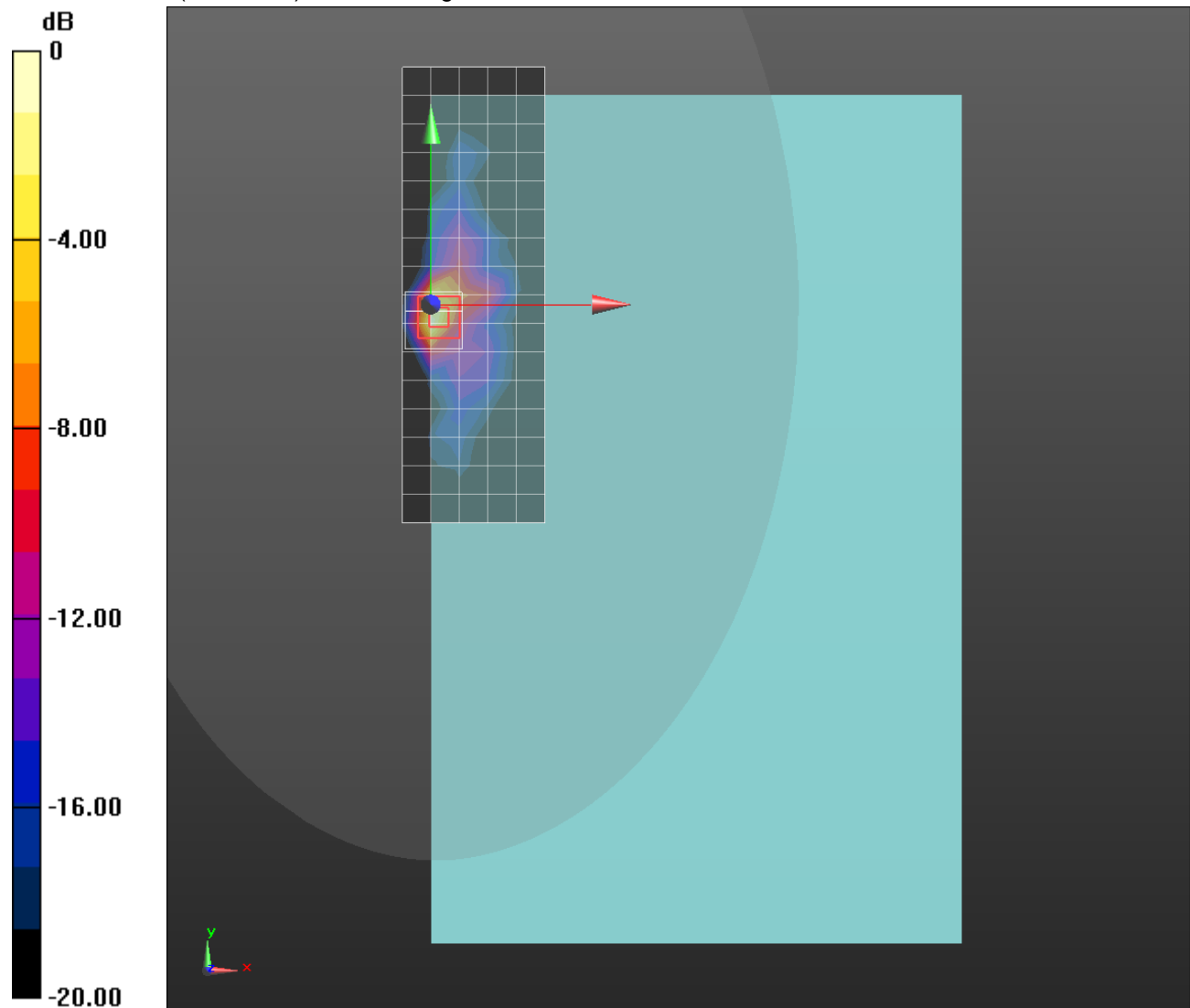
Rear/QPSK 1/49_ch 27710/Zoom Scan (7x7x7)/Cube 0: Measurement grid: dx=5mm, dy=5mm, dz=5mm

Reference Value = 20.24 V/m; Power Drift = -0.14 dB

Peak SAR (extrapolated) = 1.44 W/kg

SAR(1 g) = 0.532 W/kg; SAR(10 g) = 0.195 W/kg

Maximum value of SAR (measured) = 0.796 W/kg



0 dB = 0.796 W/kg = -0.99 dBW/kg

Wi-Fi 2.4GHz

Frequency: 2462 MHz; Duty Cycle: 1:1; Room Ambient Temperature: 24.0°C; Liquid Temperature: 23.0°C
 Medium parameters used (interpolated): $f = 2462 \text{ MHz}$; $\sigma = 2.047 \text{ S/m}$; $\epsilon_r = 51.17$; $\rho = 1000 \text{ kg/m}^3$

DASY5 Configuration:

- Area Scan Setting: Find Secondary Maximum Within: 2.0 dB and with a peak SAR value greater than 0.0012W/kg
- Electronics: DAE4 Sn1446; Calibrated: 2015-08-17
- Probe: EX3DV4 - SN7313; ConvF(7.12, 7.12, 7.12); Calibrated: 2015-07-23;
- Sensor-Surface: 2.5mm (Mechanical Surface Detection), Sensor-Surface: 2mm (Mechanical Surface Detection)
- Phantom: ELI v5.0 (20deg probe tilt); Type: QDOVA002AA; Serial: TP:2005

Edge 2/802.11b_ch 6/Area Scan (8x26x1): Measurement grid: dx=12mm, dy=12mm

Maximum value of SAR (measured) = 0.640 W/kg

Edge 2/802.11b_ch 6/Zoom Scan (7x7x7)/Cube 0: Measurement grid: dx=5mm, dy=5mm, dz=5mm

Reference Value = 18.12 V/m; Power Drift = -0.09 dB

Peak SAR (extrapolated) = 1.12 W/kg

SAR(1 g) = 0.481 W/kg; SAR(10 g) = 0.205 W/kg

Maximum value of SAR (measured) = 0.757 W/kg

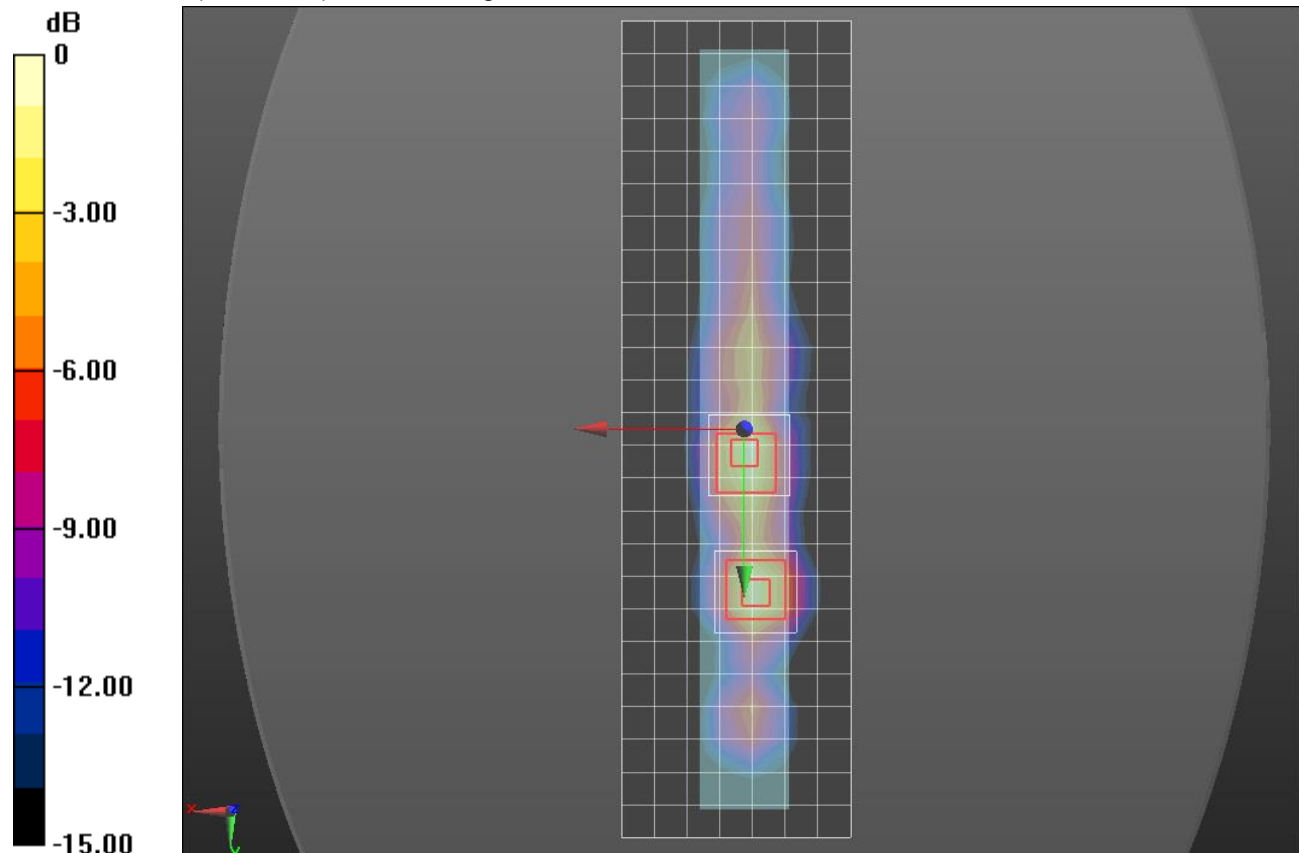
Edge 2/802.11b_ch 6/Zoom Scan 2 (7x7x7)/Cube 0: Measurement grid: dx=5mm, dy=5mm, dz=5mm

Reference Value = 18.12 V/m; Power Drift = -0.09 dB

Peak SAR (extrapolated) = 0.928 W/kg

SAR(1 g) = 0.460 W/kg; SAR(10 g) = 0.209 W/kg

Maximum value of SAR (measured) = 0.698 W/kg



0 dB = 0.698 W/kg = -1.56 dBW/kg

Wi-Fi 5.3GHz

Frequency: 5310 MHz; Duty Cycle: 1:1; Room Ambient Temperature: 24.0°C; Liquid Temperature: 23.0°C
 Medium parameters used: $f = 5310 \text{ MHz}$; $\sigma = 5.492 \text{ S/m}$; $\epsilon_r = 47.259$; $\rho = 1000 \text{ kg/m}^3$

DASY5 Configuration:

- Area Scan Setting: Find Secondary Maximum Within: 2.0 dB and with a peak SAR value greater than 0.0012W/kg
- Electronics: DAE3 Sn479; Calibrated: 2014-10-15
- Probe: EX3DV4 - SN7352; ConvF(4.3, 4.3, 4.3); Calibrated: 2015-03-06;
- Sensor-Surface: 2mm (Mechanical Surface Detection)
- Phantom: ELI Phantom v5.0; Type: QDOVA002AA; Serial: TP:2001

Edge 2/802.11n HT40_ch 62 /Area Scan (10x31x1): Measurement grid: dx=10mm, dy=10mm

Maximum value of SAR (measured) = 1.98 W/kg

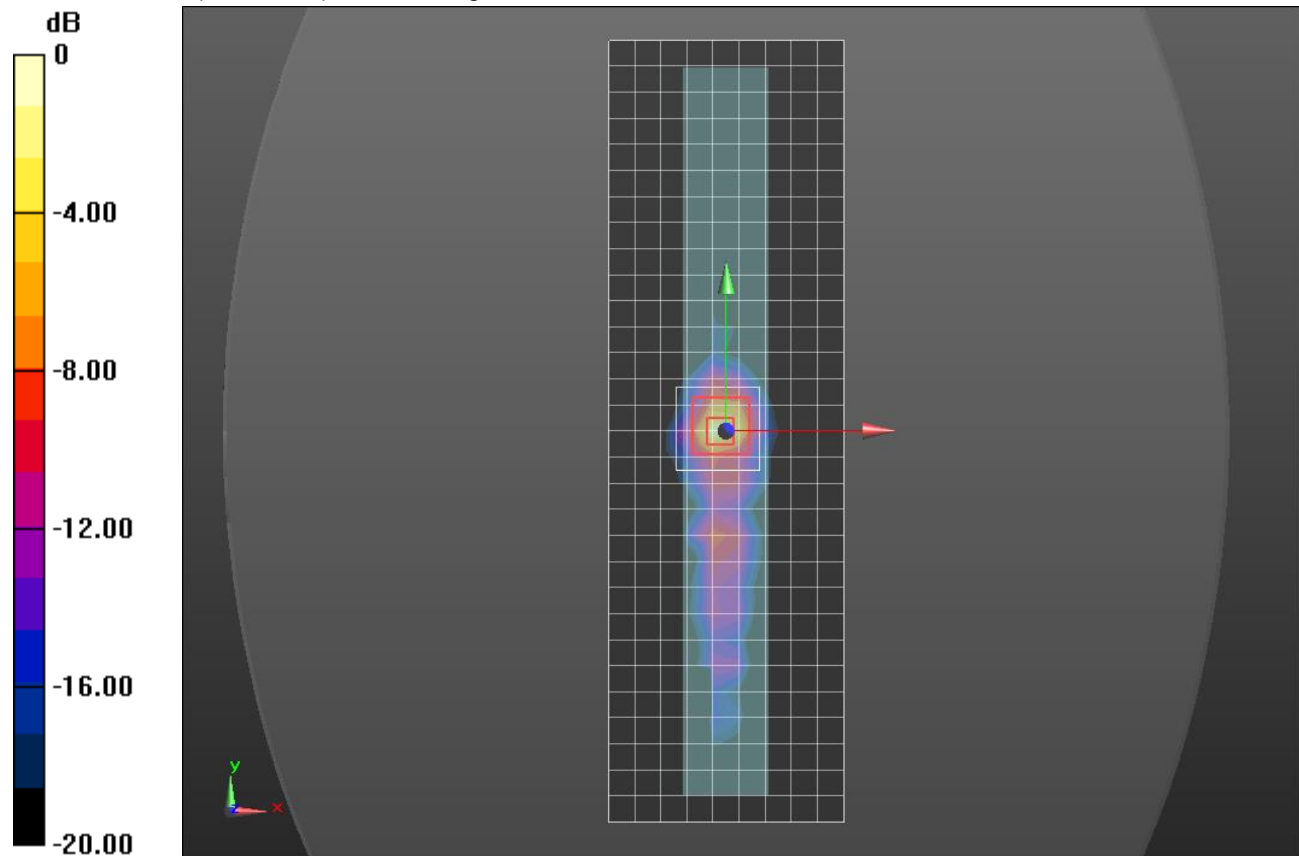
Edge 2/802.11n HT40_ch 62 /Zoom Scan (9x9x12)/Cube 0: Measurement grid: dx=4mm, dy=4mm, dz=2mm

Reference Value = 18.95 V/m; Power Drift = -0.19 dB

Peak SAR (extrapolated) = 4.92 W/kg

SAR(1 g) = 1.02 W/kg; SAR(10 g) = 0.236 W/kg

Maximum value of SAR (measured) = 2.41 W/kg



0 dB = 2.41 W/kg = 3.82 dBW/kg

Wi-Fi 5.5GHz

Frequency: 5670 MHz; Duty Cycle: 1:1; Room Ambient Temperature: 24.0°C; Liquid Temperature: 23.0°C
 Medium parameters used: $f = 5670 \text{ MHz}$; $\sigma = 5.978 \text{ S/m}$; $\epsilon_r = 46.661$; $\rho = 1000 \text{ kg/m}^3$

DASY5 Configuration:

- Area Scan Setting: Find Secondary Maximum Within: 2.0 dB and with a peak SAR value greater than 0.0012W/kg
- Electronics: DAE3 Sn479; Calibrated: 2014-10-15
- Probe: EX3DV4 - SN7352; ConvF(3.83, 3.83, 3.83); Calibrated: 2015-03-06;
- Sensor-Surface: 2mm (Mechanical Surface Detection)
- Phantom: ELI Phantom v5.0; Type: QDOVA002AA; Serial: TP:2001

Edge 2/802.11n HT40_ch 134 /Area Scan (10x31x1): Measurement grid: dx=10mm, dy=10mm
 Maximum value of SAR (measured) = 1.48 W/kg

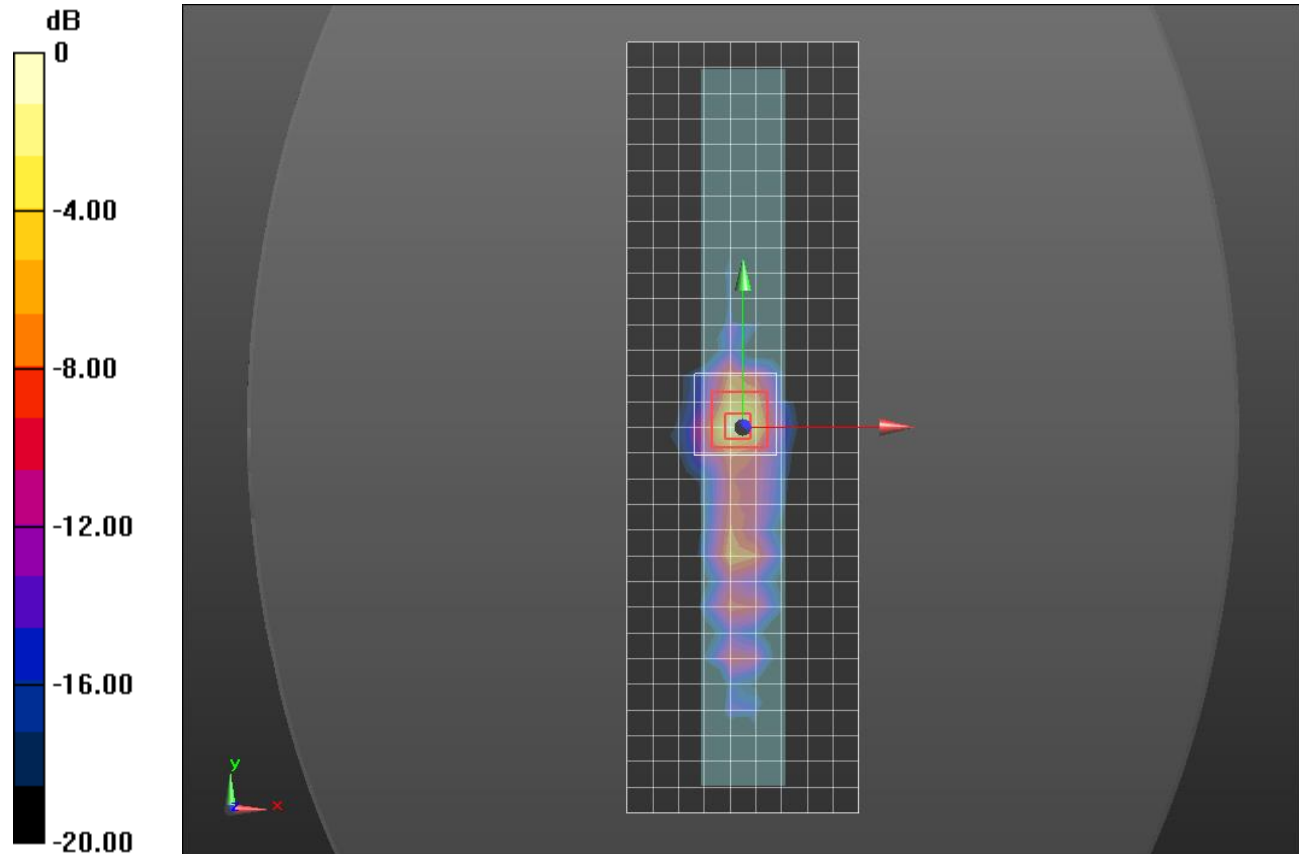
Edge 2/802.11n HT40_ch 134 /Zoom Scan (9x9x12)/Cube 0: Measurement grid: dx=4mm, dy=4mm, dz=2mm

Reference Value = 17.50 V/m; Power Drift = -0.11 dB

Peak SAR (extrapolated) = 3.21 W/kg

SAR(1 g) = 0.745 W/kg; SAR(10 g) = 0.185 W/kg

Maximum value of SAR (measured) = 1.80 W/kg



0 dB = 1.80 W/kg = 2.55 dBW/kg

Wi-Fi 5.8GHz

Frequency: 5755 MHz; Duty Cycle: 1:1; Room Ambient Temperature: 24.0°C; Liquid Temperature: 23.0°C
 Medium parameters used: $f = 5755 \text{ MHz}$; $\sigma = 6.116 \text{ S/m}$; $\epsilon_r = 46.557$; $\rho = 1000 \text{ kg/m}^3$

DASY5 Configuration:

- Area Scan Setting: Find Secondary Maximum Within: 2.0 dB and with a peak SAR value greater than 0.0012W/kg
- Electronics: DAE4 Sn1446; Calibrated: 2015-08-17
- Probe: EX3DV4 - SN7313; ConvF(4.16, 4.16, 4.16); Calibrated: 2015-07-23;
- Sensor-Surface: 2mm (Mechanical Surface Detection)
- Phantom: ELI Phantom v5.0; Type: QDOVA002AA; Serial: TP:2001

Edge 2/802.11n HT40_ch 151/Area Scan (10x31x1): Measurement grid: dx=10mm, dy=10mm

Maximum value of SAR (measured) = 1.12 W/kg

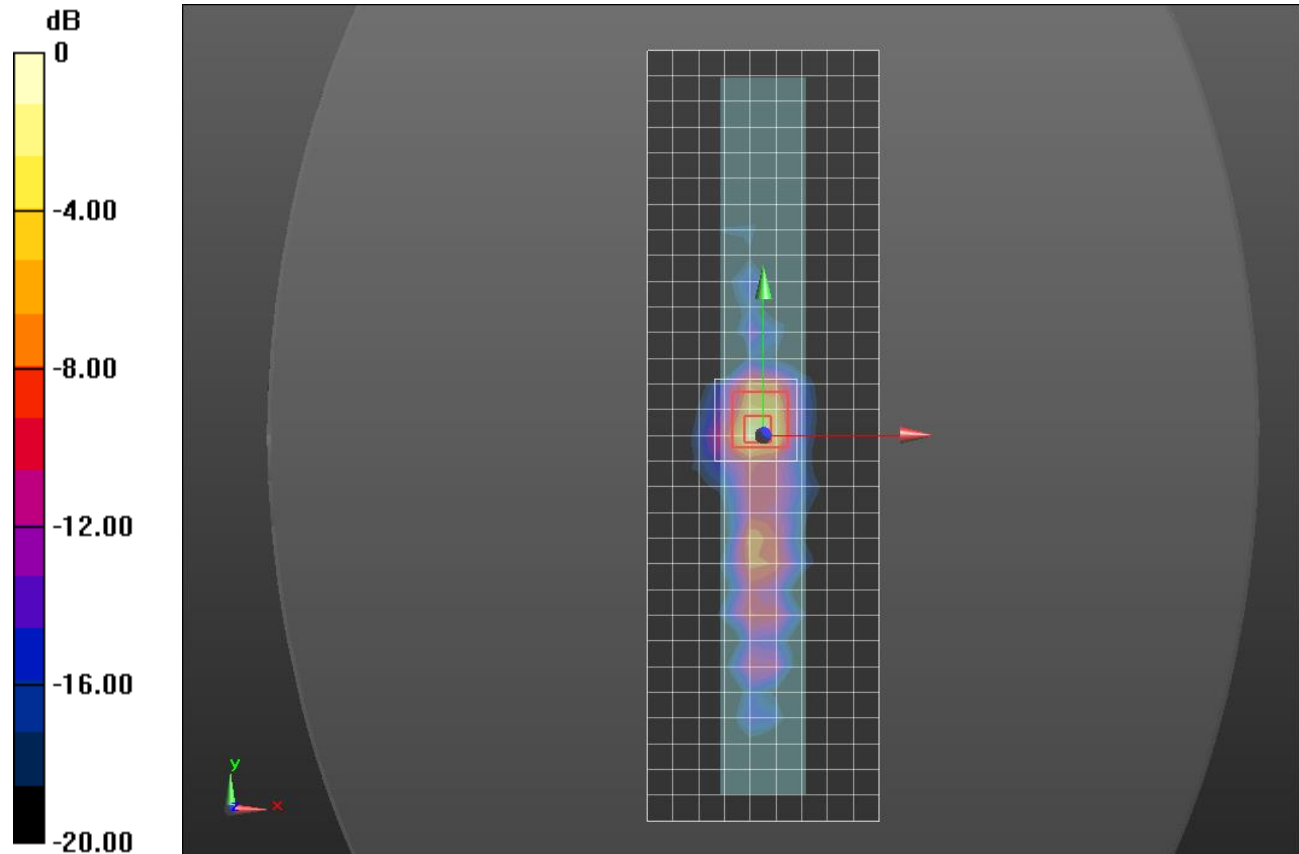
Edge 2/802.11n HT40_ch 151/Zoom Scan (9x9x12)/Cube 0: Measurement grid: dx=4mm, dy=4mm, dz=2mm

Reference Value = 13.57 V/m; Power Drift = -0.04 dB

Peak SAR (extrapolated) = 3.19 W/kg

SAR(1 g) = 0.638 W/kg; SAR(10 g) = 0.161 W/kg

Maximum value of SAR (measured) = 1.48 W/kg



0 dB = 1.48 W/kg = 1.70 dBW/kg