

Wi-Fi 2.4GHz

Frequency: 2462 MHz; Duty Cycle: 1:1; Room Ambient Temperature: 24.0°C; Liquid Temperature: 23.0°C
 Medium parameters used (interpolated): $f = 2462 \text{ MHz}$; $\sigma = 2.047 \text{ S/m}$; $\epsilon_r = 51.17$; $\rho = 1000 \text{ kg/m}^3$

DASY5 Configuration:

- Area Scan Setting: Find Secondary Maximum Within: 2.0 dB and with a peak SAR value greater than 0.0012W/kg
- Electronics: DAE4 Sn1446; Calibrated: 2015-08-17
- Probe: EX3DV4 - SN7313; ConvF(7.12, 7.12, 7.12); Calibrated: 2015-07-23;
- Sensor-Surface: 2.5mm (Mechanical Surface Detection), Sensor-Surface: 2mm (Mechanical Surface Detection)
- Phantom: ELI v5.0 (20deg probe tilt); Type: QDOVA002AA; Serial: TP:2005

Edge 2/802.11b_ch 6/Area Scan (8x26x1): Measurement grid: dx=12mm, dy=12mm

Maximum value of SAR (measured) = 0.640 W/kg

Edge 2/802.11b_ch 6/Zoom Scan (7x7x7)/Cube 0: Measurement grid: dx=5mm, dy=5mm, dz=5mm

Reference Value = 18.12 V/m; Power Drift = -0.09 dB

Peak SAR (extrapolated) = 1.12 W/kg

SAR(1 g) = 0.481 W/kg; SAR(10 g) = 0.205 W/kg

Maximum value of SAR (measured) = 0.757 W/kg

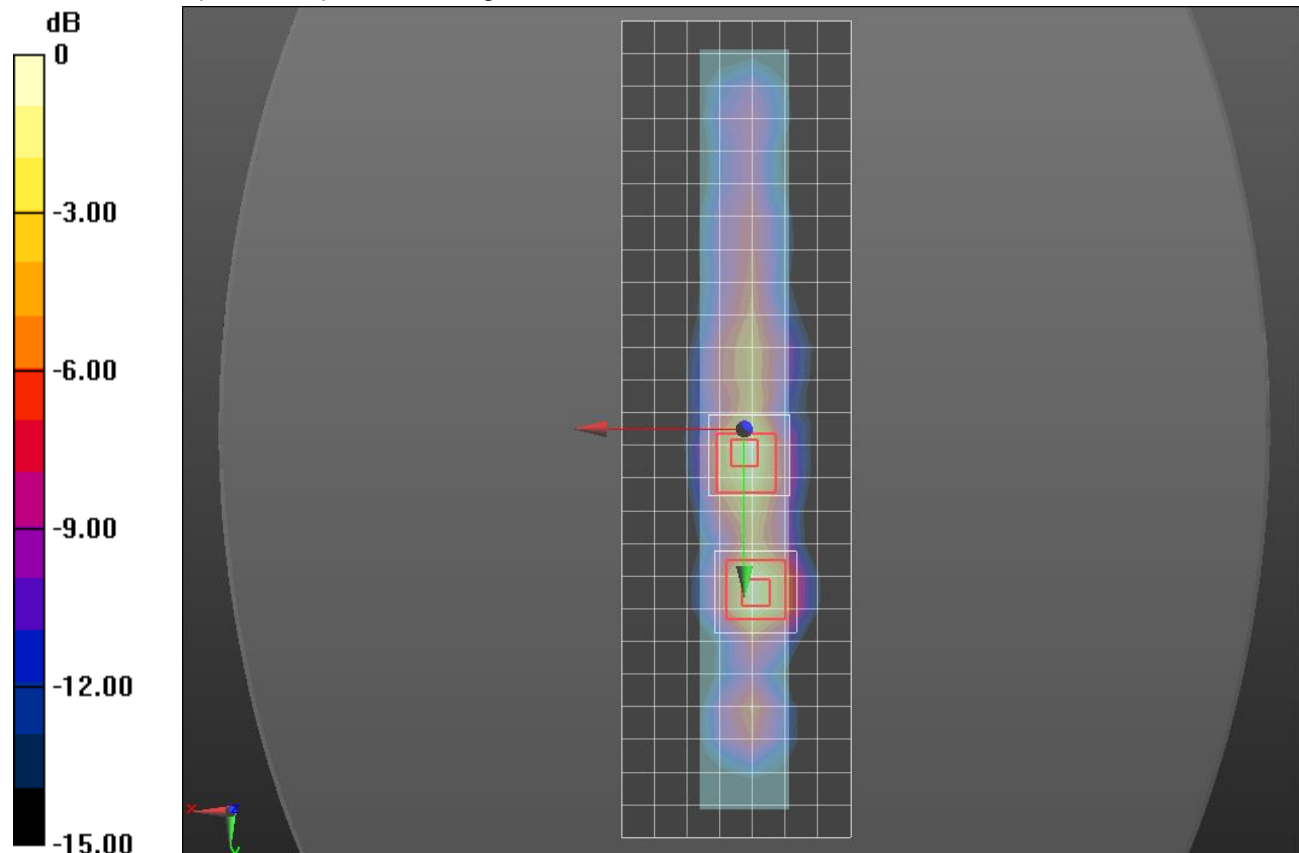
Edge 2/802.11b_ch 6/Zoom Scan 2 (7x7x7)/Cube 0: Measurement grid: dx=5mm, dy=5mm, dz=5mm

Reference Value = 18.12 V/m; Power Drift = -0.09 dB

Peak SAR (extrapolated) = 0.928 W/kg

SAR(1 g) = 0.460 W/kg; SAR(10 g) = 0.209 W/kg

Maximum value of SAR (measured) = 0.698 W/kg



0 dB = 0.698 W/kg = -1.56 dBW/kg

Wi-Fi 5.3GHz

Frequency: 5310 MHz; Duty Cycle: 1:1; Room Ambient Temperature: 24.0°C; Liquid Temperature: 23.0°C
 Medium parameters used: $f = 5310 \text{ MHz}$; $\sigma = 5.492 \text{ S/m}$; $\epsilon_r = 47.259$; $\rho = 1000 \text{ kg/m}^3$

DASY5 Configuration:

- Area Scan Setting: Find Secondary Maximum Within: 2.0 dB and with a peak SAR value greater than 0.0012W/kg
- Electronics: DAE3 Sn479; Calibrated: 2014-10-15
- Probe: EX3DV4 - SN7352; ConvF(4.3, 4.3, 4.3); Calibrated: 2015-03-06;
- Sensor-Surface: 2mm (Mechanical Surface Detection)
- Phantom: ELI Phantom v5.0; Type: QDOVA002AA; Serial: TP:2001

Edge 2/802.11n HT40_ch 62 /Area Scan (10x31x1): Measurement grid: dx=10mm, dy=10mm

Maximum value of SAR (measured) = 1.98 W/kg

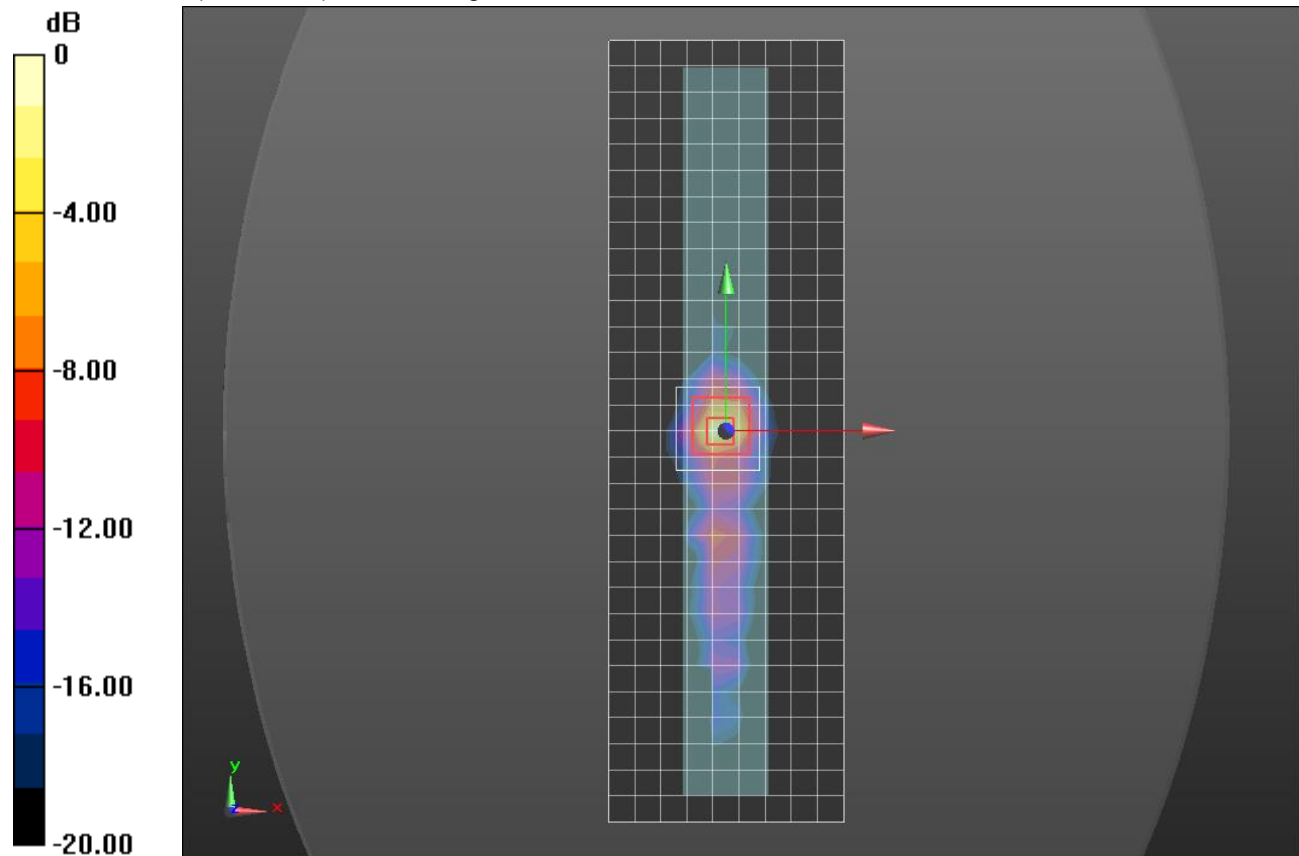
Edge 2/802.11n HT40_ch 62 /Zoom Scan (9x9x12)/Cube 0: Measurement grid: dx=4mm, dy=4mm, dz=2mm

Reference Value = 18.95 V/m; Power Drift = -0.19 dB

Peak SAR (extrapolated) = 4.92 W/kg

SAR(1 g) = 1.02 W/kg; SAR(10 g) = 0.236 W/kg

Maximum value of SAR (measured) = 2.41 W/kg



0 dB = 2.41 W/kg = 3.82 dBW/kg

Wi-Fi 5.5GHz

Frequency: 5670 MHz; Duty Cycle: 1:1; Room Ambient Temperature: 24.0°C; Liquid Temperature: 23.0°C
 Medium parameters used: $f = 5670 \text{ MHz}$; $\sigma = 5.978 \text{ S/m}$; $\epsilon_r = 46.661$; $\rho = 1000 \text{ kg/m}^3$

DASY5 Configuration:

- Area Scan Setting: Find Secondary Maximum Within: 2.0 dB and with a peak SAR value greater than 0.0012W/kg
- Electronics: DAE3 Sn479; Calibrated: 2014-10-15
- Probe: EX3DV4 - SN7352; ConvF(3.83, 3.83, 3.83); Calibrated: 2015-03-06;
- Sensor-Surface: 2mm (Mechanical Surface Detection)
- Phantom: ELI Phantom v5.0; Type: QDOVA002AA; Serial: TP:2001

Edge 2/802.11n HT40_ch 134 /Area Scan (10x31x1): Measurement grid: dx=10mm, dy=10mm
 Maximum value of SAR (measured) = 1.48 W/kg

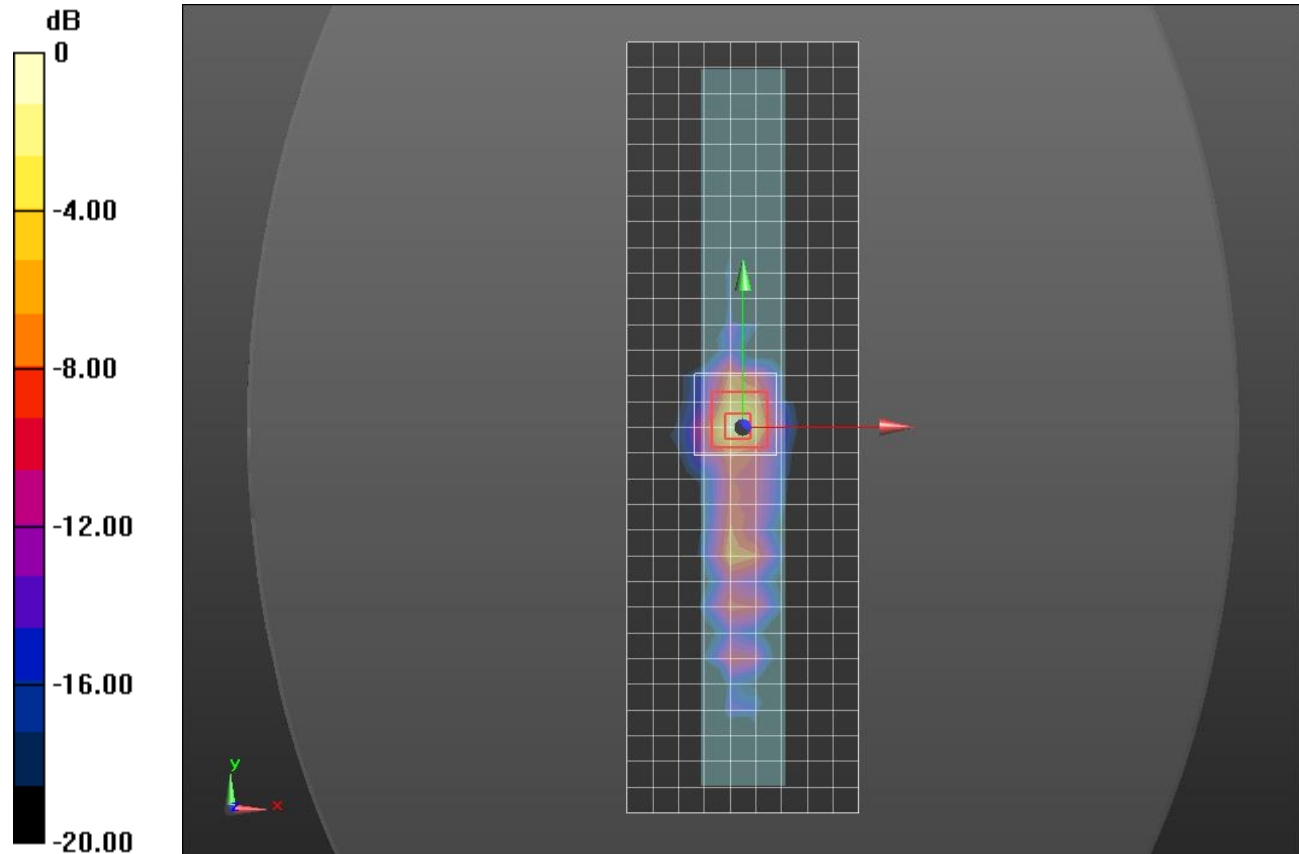
Edge 2/802.11n HT40_ch 134 /Zoom Scan (9x9x12)/Cube 0: Measurement grid: dx=4mm, dy=4mm, dz=2mm

Reference Value = 17.50 V/m; Power Drift = -0.11 dB

Peak SAR (extrapolated) = 3.21 W/kg

SAR(1 g) = 0.745 W/kg; SAR(10 g) = 0.185 W/kg

Maximum value of SAR (measured) = 1.80 W/kg



0 dB = 1.80 W/kg = 2.55 dBW/kg

Wi-Fi 5.8GHz

Frequency: 5755 MHz; Duty Cycle: 1:1; Room Ambient Temperature: 24.0°C; Liquid Temperature: 23.0°C
 Medium parameters used: $f = 5755 \text{ MHz}$; $\sigma = 6.116 \text{ S/m}$; $\epsilon_r = 46.557$; $\rho = 1000 \text{ kg/m}^3$

DASY5 Configuration:

- Area Scan Setting: Find Secondary Maximum Within: 2.0 dB and with a peak SAR value greater than 0.0012W/kg
- Electronics: DAE4 Sn1446; Calibrated: 2015-08-17
- Probe: EX3DV4 - SN7313; ConvF(4.16, 4.16, 4.16); Calibrated: 2015-07-23;
- Sensor-Surface: 2mm (Mechanical Surface Detection)
- Phantom: ELI Phantom v5.0; Type: QDOVA002AA; Serial: TP:2001

Edge 2/802.11n HT40_ch 151/Area Scan (10x31x1): Measurement grid: dx=10mm, dy=10mm

Maximum value of SAR (measured) = 1.12 W/kg

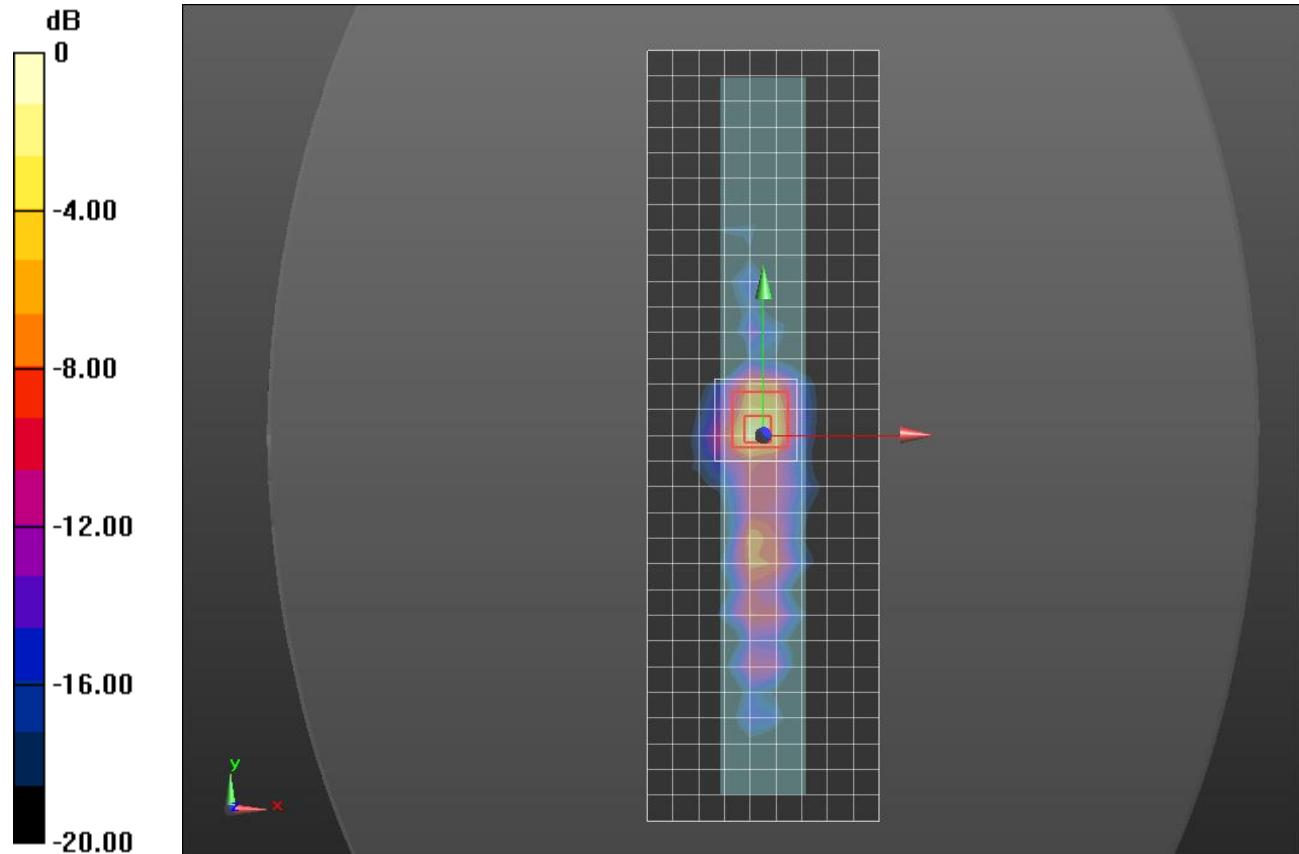
Edge 2/802.11n HT40_ch 151/Zoom Scan (9x9x12)/Cube 0: Measurement grid: dx=4mm, dy=4mm, dz=2mm

Reference Value = 13.57 V/m; Power Drift = -0.04 dB

Peak SAR (extrapolated) = 3.19 W/kg

SAR(1 g) = 0.638 W/kg; SAR(10 g) = 0.161 W/kg

Maximum value of SAR (measured) = 1.48 W/kg



0 dB = 1.48 W/kg = 1.70 dBW/kg