

## 20220705\_SystemPerformancecheck 2450\_SN939

Frequency: 2450 MHz; Duty Cycle: 1:1; Room Ambient Temperature: 23.0°C; Liquid Temperature: 22.0°C  
 Medium parameters used:  $f = 2450$  MHz;  $\sigma = 1.793$  S/m;  $\epsilon_r = 40.114$ ;  $\rho = 1000$  kg/m<sup>3</sup>

DASY5 Configuration:

- Area Scan Setting: Find Secondary Maximum Within: 2.0 dB and with a peak SAR value greater than 0.012W/kg
- Electronics: DAE4 Sn1670; Calibrated: 2022-06-07
- Probe: EX3DV4 - SN7330; ConvF(8.16, 8.16, 8.16) @ 2450 MHz; Calibrated: 2022-01-28
- Sensor-Surface: 1.4mm (Mechanical Surface Detection)
- Phantom: ELI V6.0 (20deg probe tilt) (Left); Type: QD OVA 003 AA; Serial: 2111

**Head/2450MHz, Pin=100mW/Area Scan (6x8x1):** Measurement grid: dx=12mm, dy=12mm  
 Maximum value of SAR (measured) = 6.54 W/kg

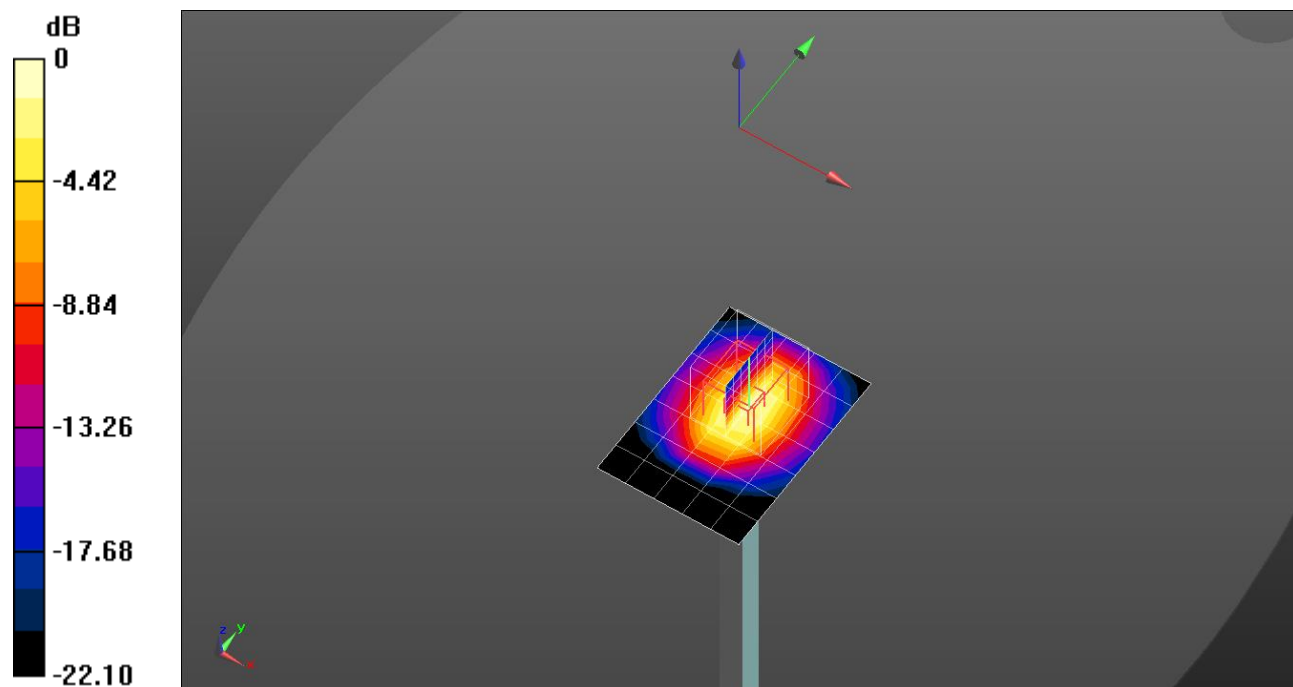
**Head/2450MHz, Pin=100mW/Zoom Scan (7x7x7)/Cube 0:** Measurement grid: dx=5mm, dy=5mm, dz=5mm

Reference Value = 61.49 V/m; Power Drift = -0.03 dB

Peak SAR (extrapolated) = 10.9 W/kg

**SAR(1 g) = 5.06 W/kg; SAR(10 g) = 2.37 W/kg**

Maximum value of SAR (measured) = 8.60 W/kg



0 dB = 8.60 W/kg = 9.34 dBW/kg

# Measurement Report for Device, , , UID 0 -, Channel 0 (5250.0MHz)

## Exposure Conditions

| Phantom Section, TSL | Position, Test Distance [mm] | Band | Group, UID | Frequency [MHz], Channel Number | Conversion Factor | TSL Conductivity [S/m] | TSL Permittivity |
|----------------------|------------------------------|------|------------|---------------------------------|-------------------|------------------------|------------------|
| Flat, HSL            |                              |      | 0--        | 5250.0,0                        | 5.34              | 4.61                   | 36.7             |

## Hardware Setup

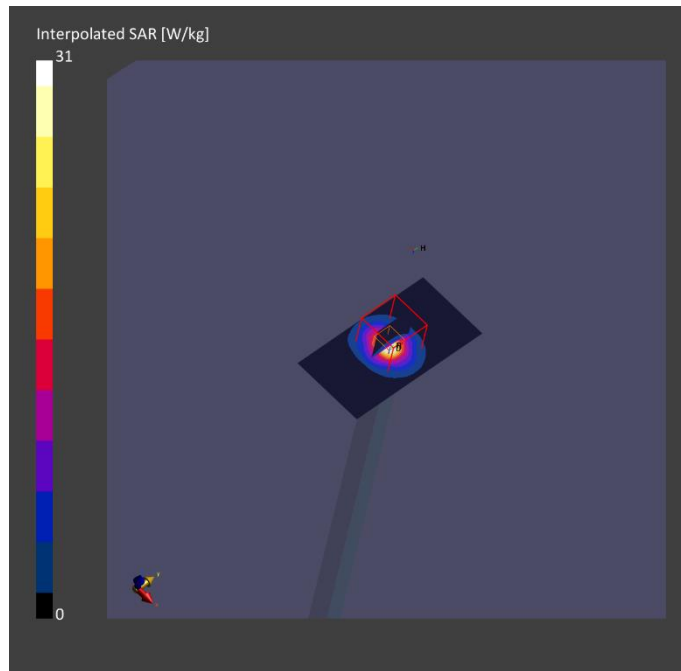
| Phantom                            | TSL, Measured Date          | Probe, Calibration Date     | DAE, Calibration Date   |
|------------------------------------|-----------------------------|-----------------------------|-------------------------|
| ELI V6.0 (20deg probe tilt) - 2005 | HBBL-600-10000, 2022-Jul-18 | EX3DV4 - SN7330, 2022-01-28 | DAE4 Sn1468, 2021-09-27 |

## Scan Setup

|                     | Area Scan   | Zoom Scan          |
|---------------------|-------------|--------------------|
| Grid Extents [mm]   | 40.0 x 80.0 | 22.0 x 22.0 x 22.0 |
| Grid Steps [mm]     | 10.0 x 10.0 | 4.0 x 4.0 x 1.4    |
| Sensor Surface [mm] | 3.0         | 1.4                |

## Measurement Results

|                  | Area Scan  | Zoom Scan  |
|------------------|------------|------------|
| Date             | 2022-07-18 | 2022-07-18 |
| psSAR1g [W/kg]   | 7.76       | 8.33       |
| psSAR10g [W/kg]  | 2.24       | 2.42       |
| Power Drift [dB] |            | 0.01       |



# Measurement Report for Device, , , UID 0 -, Channel 0 (13.0MHz)

## Exposure Conditions

| Phantom Section, TSL | Position, Test Distance [mm] | Band | Group, UID | Frequency [MHz], Channel Number | Conversion Factor | TSL Conductivity [S/m] | TSL Permittivity |
|----------------------|------------------------------|------|------------|---------------------------------|-------------------|------------------------|------------------|
| Flat, HSL            |                              |      | 0--        | 13.0,0                          | 17.91             | 0.748                  | 53.7             |

## Hardware Setup

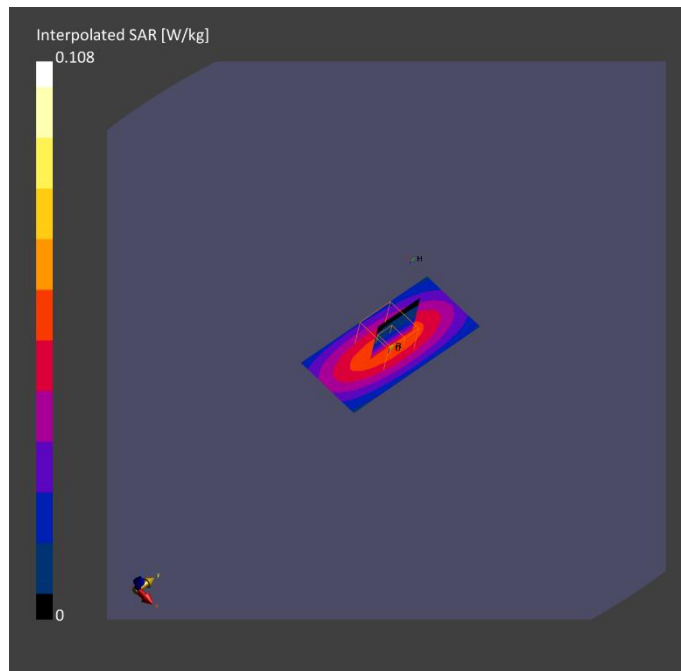
| Phantom                            | TSL, Measured Date                      | Probe, Calibration Date     | DAE, Calibration Date   |
|------------------------------------|---|-----------------------------|-------------------------|
| ELI V6.0 (20deg probe tilt) - xxxx | HBBL-600-10000 Charge:xxxx, 2022-Jul-18 | EX3DV4 - SN7313, 2022-03-02 | DAE4 Sn1668, 2022-04-27 |

## Scan Setup

|                     | Area Scan   | Zoom Scan          |
|---------------------|-------------|--------------------|
| Grid Extents [mm]   | 40.0 x 90.0 | 30.0 x 30.0 x 30.0 |
| Grid Steps [mm]     | 10.0 x 15.0 | 6.0 x 6.0 x 1.5    |
| Sensor Surface [mm] | 3.0         | 1.4                |

## Measurement Results

|                  | Area Scan  | Zoom Scan  |
|------------------|------------|------------|
| Date             | 2022-07-18 | 2022-07-18 |
| psSAR1g [W/kg]   | 0.055      | 0.053      |
| psSAR10g [W/kg]  | 0.044      | 0.033      |
| Power Drift [dB] |            | -0.01      |



# Measurement Report for Device, , , UID 0 -, Channel 0 (5600.0MHz)

## Exposure Conditions

| Phantom Section, TSL | Position, Test Distance [mm] | Band | Group, UID | Frequency [MHz], Channel Number | Conversion Factor | TSL Conductivity [S/m] | TSL Permittivity |
|----------------------|------------------------------|------|------------|---------------------------------|-------------------|------------------------|------------------|
| Flat, HSL            |                              |      | 0--        | 5600.0,0                        | 4.66              | 4.98                   | 34.6             |

## Hardware Setup

| Phantom                            | TSL, Measured Date                      | Probe, Calibration Date     | DAE, Calibration Date   |
|------------------------------------|---|-----------------------------|-------------------------|
| ELI V6.0 (20deg probe tilt) - xxxx | HBBL-600-10000 Charge:xxxx, 2022-Jul-19 | EX3DV4 - SN7313, 2022-03-02 | DAE4 Sn1668, 2022-04-27 |

## Scan Setup

|                     | Area Scan   | Zoom Scan          |
|---------------------|-------------|--------------------|
| Grid Extents [mm]   | 40.0 x 80.0 | 22.0 x 22.0 x 22.0 |
| Grid Steps [mm]     | 10.0 x 10.0 | 4.0 x 4.0 x 1.4    |
| Sensor Surface [mm] | 3.0         | 1.4                |

## Measurement Results

|                  | Area Scan  | Zoom Scan  |
|------------------|------------|------------|
| Date             | 2022-07-19 | 2022-07-19 |
| psSAR1g [W/kg]   | 8.10       | 8.80       |
| psSAR10g [W/kg]  | 2.35       | 2.50       |
| Power Drift [dB] |            | 0.03       |

