

Wi-Fi 2.4 GHz

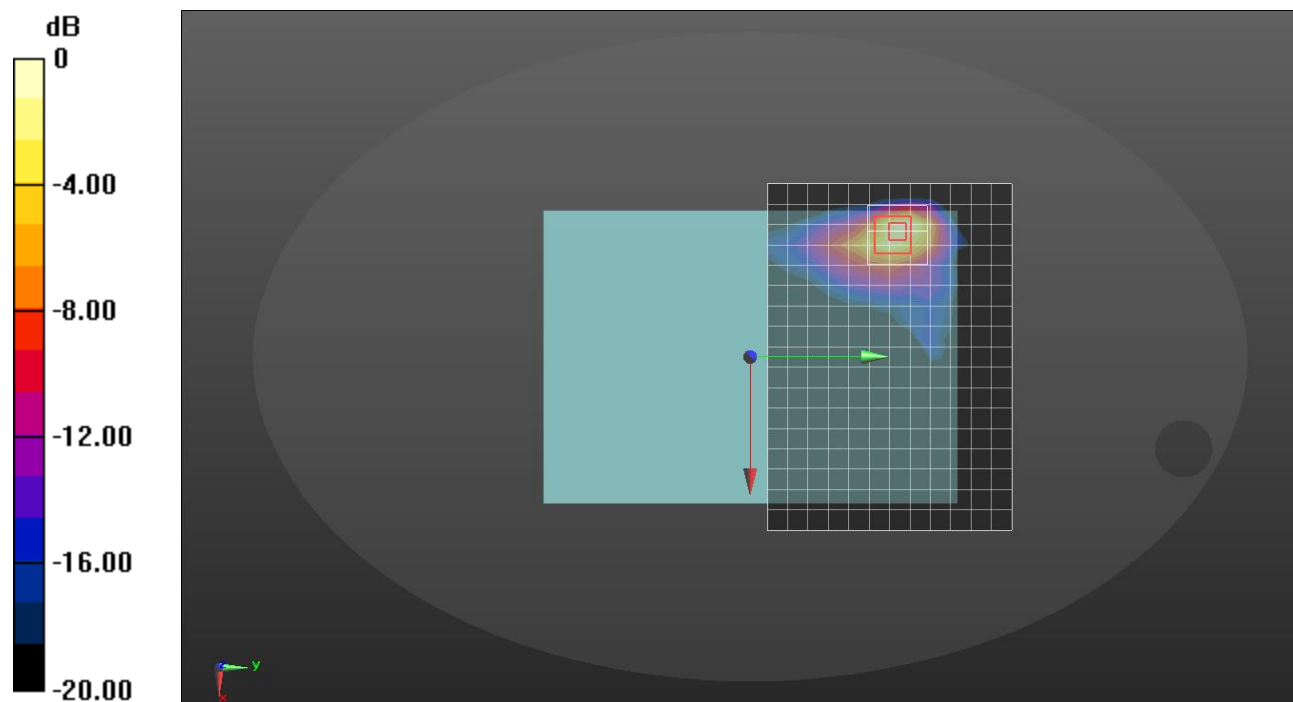
Frequency: 2462 MHz; Duty Cycle: 1:1; Room Ambient Temperature: 23.0°C; Liquid Temperature: 22.0°C
 Medium parameters used (interpolated): $f = 2462$ MHz; $\sigma = 1.802$ S/m; $\epsilon_r = 40.073$; $\rho = 1000$ kg/m³

DASY5 Configuration:

- Area Scan Setting: Find Secondary Maximum Within: 2.0 dB and with a peak SAR value greater than 0.012W/kg
- Electronics: DAE4 Sn1670; Calibrated: 2022-06-07
- Probe: EX3DV4 - SN7330; ConvF(8.16, 8.16, 8.16) @ 2462 MHz; Calibrated: 2022-01-28
- Sensor-Surface: 1.4mm (Mechanical Surface Detection)
- Phantom: ELI V6.0 (20deg probe tilt) (Left); Type: QD OVA 003 AA; Serial: 2111

Rear/802.11 b mode ch.11 SISO Ant.1/Area Scan (18x13x1): Measurement grid: dx=12mm, dy=12mm
 Maximum value of SAR (measured) = 0.882 W/kg

Rear/802.11 b mode ch.11 SISO Ant.1Zoom Scan (8x8x8)/Cube 0: Measurement grid: dx=5mm, dy=5mm, dz=1.4mm
 Reference Value = 18.32 V/m; Power Drift = -0.04 dB
 Peak SAR (extrapolated) = 2.56 W/kg
SAR(1 g) = 0.585 W/kg; SAR(10 g) = 0.229 W/kg
 Maximum value of SAR (measured) = 1.35 W/kg



0 dB = 0.882 W/kg = -0.55 dBW/kg

Wi-Fi 2.4 GHz

Frequency: 2437 MHz; Duty Cycle: 1:1; Room Ambient Temperature: 23.0°C; Liquid Temperature: 22.0°C
 Medium parameters used (interpolated): $f = 2437$ MHz; $\sigma = 1.784$ S/m; $\epsilon_r = 40.167$; $\rho = 1000$ kg/m³

DASY5 Configuration:

- Area Scan Setting: Find Secondary Maximum Within: 2.0 dB and with a peak SAR value greater than 0.012W/kg
- Electronics: DAE4 Sn1670; Calibrated: 2022-06-07
- Probe: EX3DV4 - SN7330; ConvF(8.16, 8.16, 8.16) @ 2437 MHz; Calibrated: 2022-01-28
- Sensor-Surface: 1.4mm (Mechanical Surface Detection)
- Phantom: ELI V6.0 (20deg probe tilt) (Left); Type: QD OVA 003 AA; Serial: 2111

Edge 3/802.11 b mode ch.6 SISO Ant.2/Area Scan (7x23x1): Measurement grid: dx=12mm, dy=12mm
 Maximum value of SAR (measured) = 1.25 W/kg

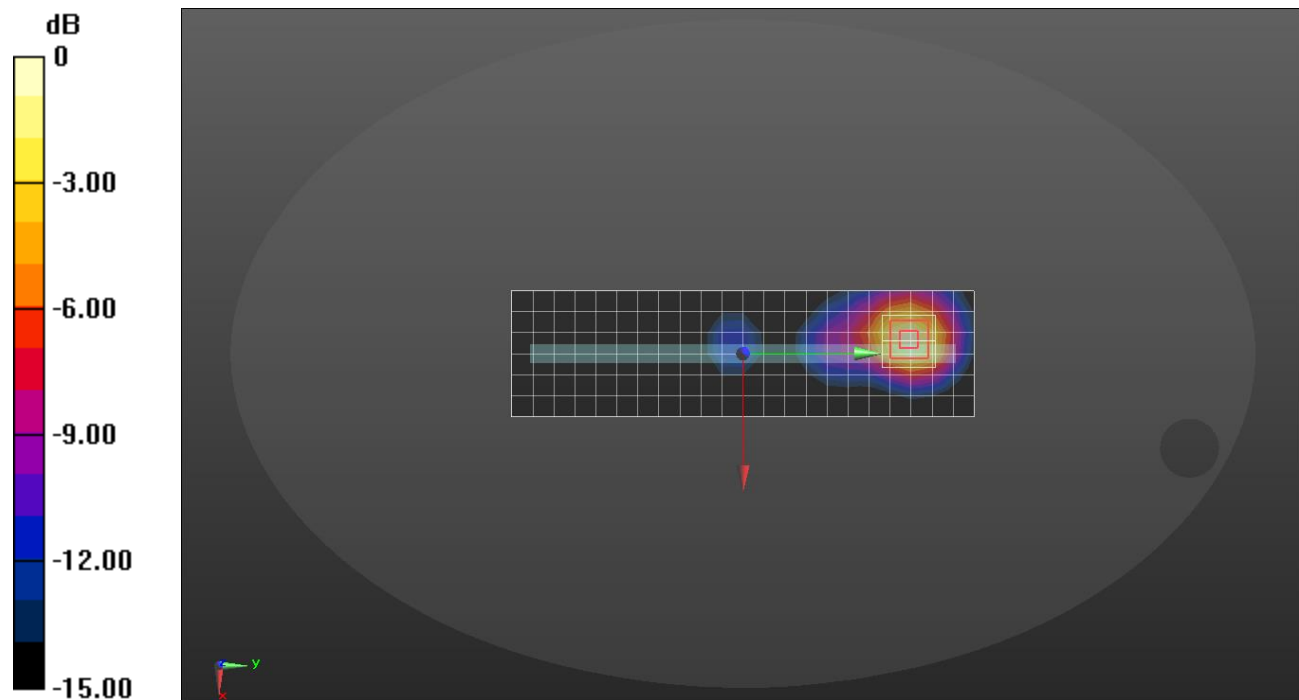
Edge 3/802.11 b mode ch.6 SISO Ant.2Zoom Scan (7x7x7)/Cube 0: Measurement grid: dx=5mm, dy=5mm, dz=5mm

Reference Value = 24.56 V/m; Power Drift = 0.01 dB

Peak SAR (extrapolated) = 1.73 W/kg

SAR(1 g) = 0.875 W/kg; SAR(10 g) = 0.436 W/kg

Maximum value of SAR (measured) = 1.40 W/kg



0 dB = 1.25 W/kg = 0.97 dBW/kg

Measurement Report for Device, Edge 1, U-NII-2A, UID 10583 AAC, Channel 58 (5290.0MHz)

Exposure Conditions

Phantom Section, TSL	Position, Test Distance [mm]	Band	Group, UID	Frequency [MHz], Channel Number	Conversion Factor	TSL Conductivity [S/m]	TSL Permittivity
Flat, HSL	EDGE RIGHT, 0.00	U-NII-1, U-NII-2A	WLAN, 10583-AAC	5290.0, 58	5.34	4.69	36.5

Hardware Setup

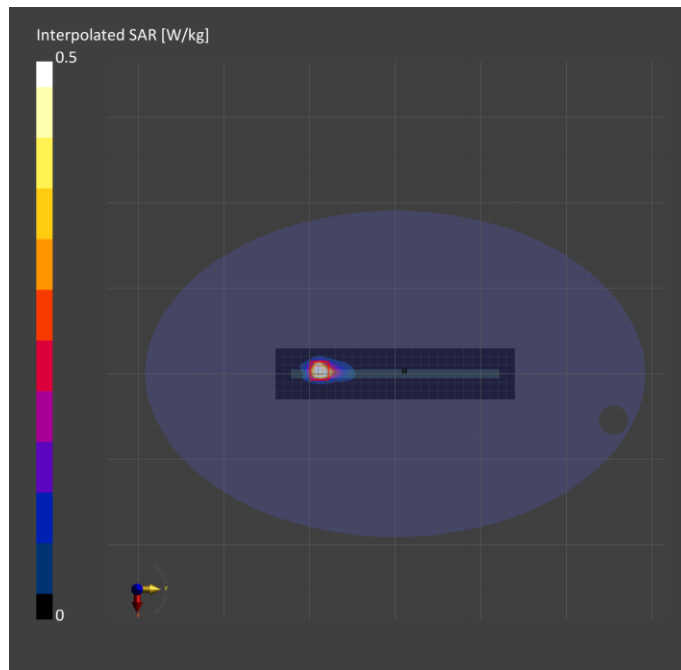
Phantom	TSL, Measured Date	Probe, Calibration Date	DAE, Calibration Date
ELI V6.0 (20deg probe tilt) - 2005	HBBL-600-10000, 2022-Jul-18	EX3DV4 - SN7330, 2022-01-28	DAE4 Sn1468, 2021-09-27

Scan Setup

	Area Scan	Zoom Scan
Grid Extents [mm]	60.0 x 280.0	22.0 x 22.0 x 22.0
Grid Steps [mm]	10.0 x 10.0	4.0 x 4.0 x 1.4
Sensor Surface [mm]	3.0	1.4

Measurement Results

	Area Scan	Zoom Scan
Date	2022-07-20	2022-07-20
psSAR1g [W/kg]	0.500	0.601
psSAR10g [W/kg]	0.157	0.171
Power Drift [dB]		-0.08



Measurement Report for Device, Rear, U-NII-2A, UID 10583 AAC, Channel 58 (5290.0MHz)

Exposure Conditions

Phantom Section, TSL	Position, Test Distance [mm]	Band	Group, UID	Frequency [MHz], Channel Number	Conversion Factor	TSL Conductivity [S/m]	TSL Permittivity
Flat, HSL	BACK, 0.00	U-NII-1, U-NII-2A	WLAN, 10583-AAC	5290.0, 58	5.34	4.69	36.5

Hardware Setup

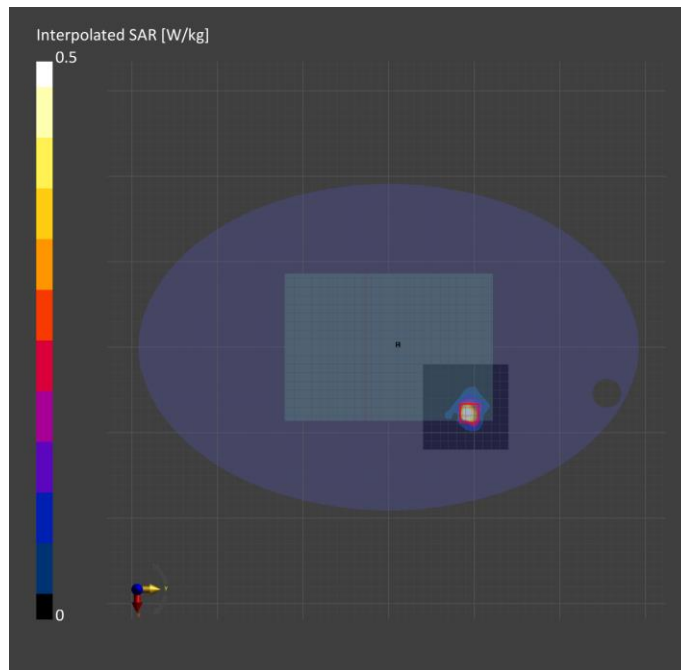
Phantom	TSL, Measured Date	Probe, Calibration Date	DAE, Calibration Date
ELI V6.0 (20deg probe tilt) - 2005	HBBL-600-10000, 2022-Jul-18	EX3DV4 - SN7330, 2022-01-28	DAE4 Sn1468, 2021-09-27

Scan Setup

	Area Scan	Zoom Scan
Grid Extents [mm]	100.0 x 100.0	22.0 x 22.0 x 22.0
Grid Steps [mm]	10.0 x 10.0	3.1 x 3.1 x 1.2
Sensor Surface [mm]	3.0	1.4

Measurement Results

	Area Scan	Zoom Scan
Date	2022-07-20	2022-07-20
psSAR1g [W/kg]	0.517	0.592
psSAR10g [W/kg]	0.147	0.149
Power Drift [dB]		0.16



Measurement Report for Device, Rear, U-NII-2A, UID 10583 AAC, Channel 58 (5290.0MHz)

Exposure Conditions

Phantom Section, TSL	Position, Test Distance [mm]	Band	Group, UID	Frequency [MHz], Channel Number	Conversion Factor	TSL Conductivity [S/m]	TSL Permittivity
Flat, HSL	BACK, 0.00	U-NII-1, U-NII-2A	WLAN, 10583-AAC	5290.0, 58	5.24	4.68	35.2

Hardware Setup

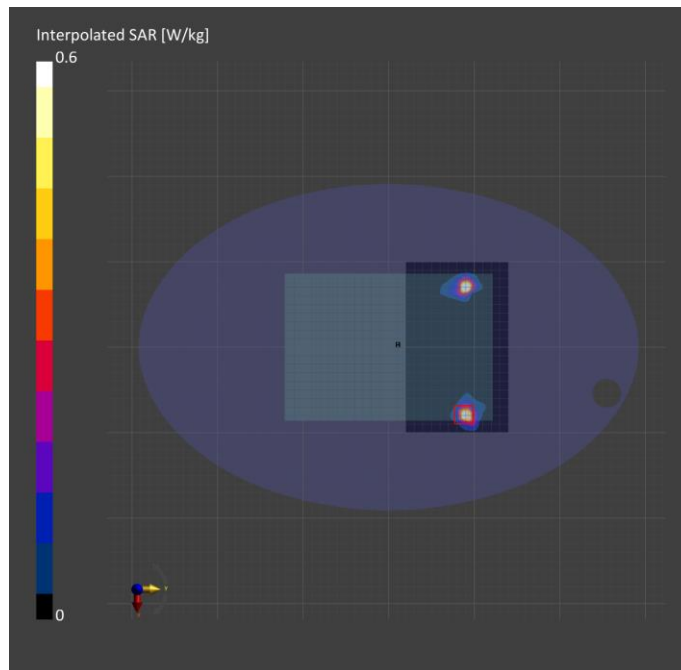
Phantom	TSL, Measured Date	Probe, Calibration Date	DAE, Calibration Date
ELI V6.0 (20deg probe tilt) - 2112	HBBL-600-10000, 2022-Jul-19	EX3DV4 - SN7313, 2022-03-02	DAE4 Sn1668, 2022-04-27

Scan Setup

	Area Scan	Zoom Scan
Grid Extents [mm]	200.0 x 120.0	22.0 x 22.0 x 22.0
Grid Steps [mm]	10.0 x 10.0	3.2 x 3.2 x 1.2
Sensor Surface [mm]	3.0	1.4

Measurement Results

	Area Scan	Zoom Scan
Date	2022-07-20	2022-07-20
psSAR1g [W/kg]	0.471	0.565
psSAR10g [W/kg]	0.125	0.126
Power Drift [dB]		0.06



Measurement Report for Device, Edge 1, U-NII-2C, UID 10583 AAC, Channel 144 (5720.0MHz)

Exposure Conditions

Phantom Section, TSL	Position, Test Distance [mm]	Band	Group, UID	Frequency [MHz], Channel Number	Conversion Factor	TSL Conductivity [S/m]	TSL Permittivity
Flat, HSL	EDGE LEFT, 16.00	U-NII-2C	WLAN, 10583-AAC	5720.0, 144	4.85	5.20	35.8

Hardware Setup

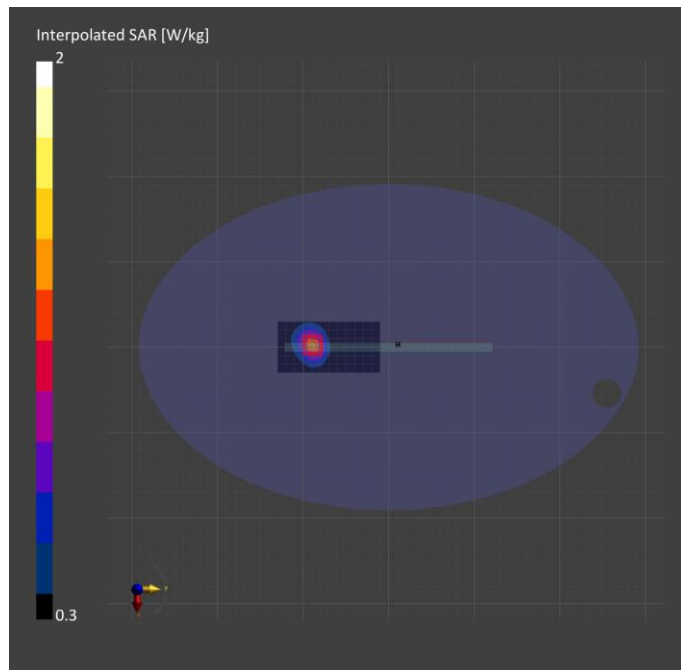
Phantom	TSL, Measured Date	Probe, Calibration Date	DAE, Calibration Date
ELI V6.0 (20deg probe tilt) - 2005	HBBL-600-10000, 2022-Jul-18	EX3DV4 - SN7330, 2022-01-28	DAE4 Sn1468, 2021-09-27

Scan Setup

	Area Scan	Zoom Scan
Grid Extents [mm]	60.0 x 120.0	22.0 x 22.0 x 22.0
Grid Steps [mm]	10.0 x 10.0	4.0 x 4.0 x 1.4
Sensor Surface [mm]	3.0	1.4

Measurement Results

	Area Scan	Zoom Scan
Date	2022-07-20	2022-07-20
psSAR1g [W/kg]	1.01	1.01
psSAR10g [W/kg]	0.423	0.426
Power Drift [dB]		-0.03



Measurement Report for Device, Rear, U-NII-2C, UID 10583 AAC, Channel 124 (5620.0MHz)

Exposure Conditions

Phantom Section, TSL	Position, Test Distance [mm]	Band	Group, UID	Frequency [MHz], Channel Number	Conversion Factor	TSL Conductivity [S/m]	TSL Permittivity
Flat, HSL	BACK, 14.00	U-NII-2C	WLAN, 10583-AAC	5620.0, 124	4.95	5.06	34.2

Hardware Setup

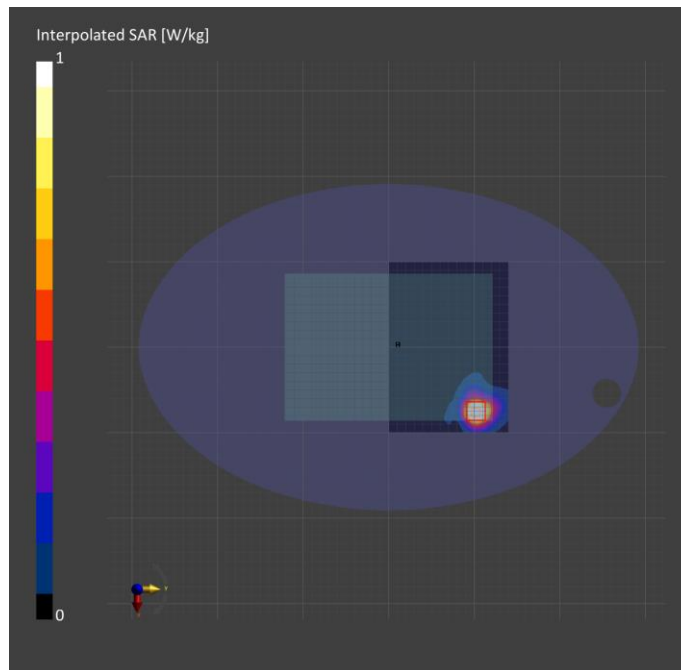
Phantom	TSL, Measured Date	Probe, Calibration Date	DAE, Calibration Date
ELI V6.0 (20deg probe tilt) - 2005	HBBL-600-10000, 2022-Jul-12	EX3DV4 - SN7330, 2022-01-28	DAE4 Sn1468, 2021-09-27

Scan Setup

	Area Scan	Zoom Scan
Grid Extents [mm]	200.0 x 140.0	22.0 x 22.0 x 22.0
Grid Steps [mm]	10.0 x 10.0	4.0 x 4.0 x 1.4
Sensor Surface [mm]	3.0	1.4

Measurement Results

	Area Scan	Zoom Scan
Date	2022-07-13	2022-07-13
psSAR1g [W/kg]	0.967	0.943
psSAR10g [W/kg]	0.372	0.363
Power Drift [dB]		0.05



Measurement Report for Device, Rear, U-NII-2C, UID 10583 AAC, Channel 122 (5610.0MHz)

Exposure Conditions

Phantom Section, TSL	Position, Test Distance [mm]	Band	Group, UID	Frequency [MHz], Channel Number	Conversion Factor	TSL Conductivity [S/m]	TSL Permittivity
Flat, HSL	BACK, 0.00	U-NII-2C	WLAN, 10583-AAC	5610.0, 122	4.66	5.01	34.6

Hardware Setup

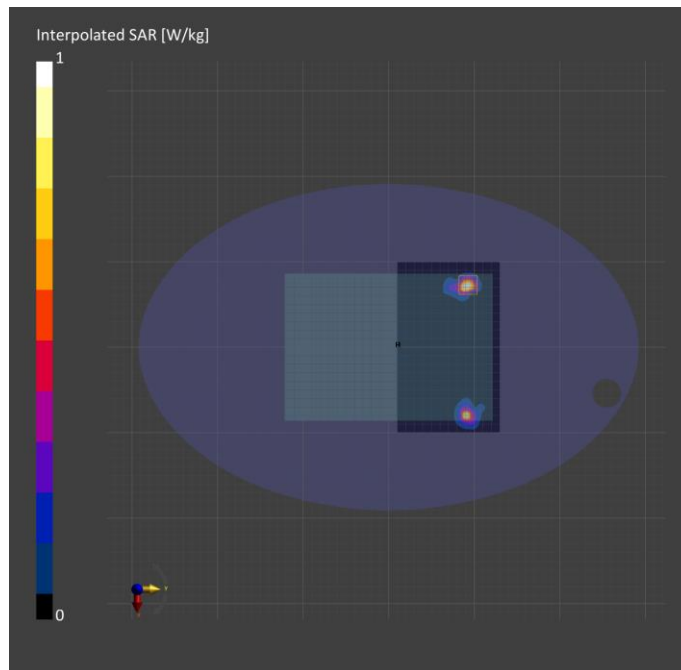
Phantom	TSL, Measured Date	Probe, Calibration Date	DAE, Calibration Date
ELI V6.0 (20deg probe tilt) - 2112	HBBL-600-10000, 2022-Jul-19	EX3DV4 - SN7313, 2022-03-02	DAE4 Sn1668, 2022-04-27

Scan Setup

	Area Scan	Zoom Scan
Grid Extents [mm]	200.0 x 120.0	22.0 x 22.0 x 22.0
Grid Steps [mm]	10.0 x 10.0	4.0 x 4.0 x 1.4
Sensor Surface [mm]	3.0	1.4

Measurement Results

	Area Scan	Zoom Scan
Date	2022-07-21	2022-07-21
psSAR1g [W/kg]	0.677	0.925
psSAR10g [W/kg]	0.190	0.215
Power Drift [dB]		0.09



Measurement Report for Device, Rear, U-NII-3, UID 10583 AAC, Channel 155 (5775.0MHz)

Exposure Conditions

Phantom Section, TSL	Position, Test Distance [mm]	Band	Group, UID	Frequency [MHz], Channel Number	Conversion Factor	TSL Conductivity [S/m]	TSL Permittivity
Flat, HSL	BACK, 0.00	U-NII-3	WLAN, 10583-AAC	5775.0, 155	4.65	5.19	34.5

Hardware Setup

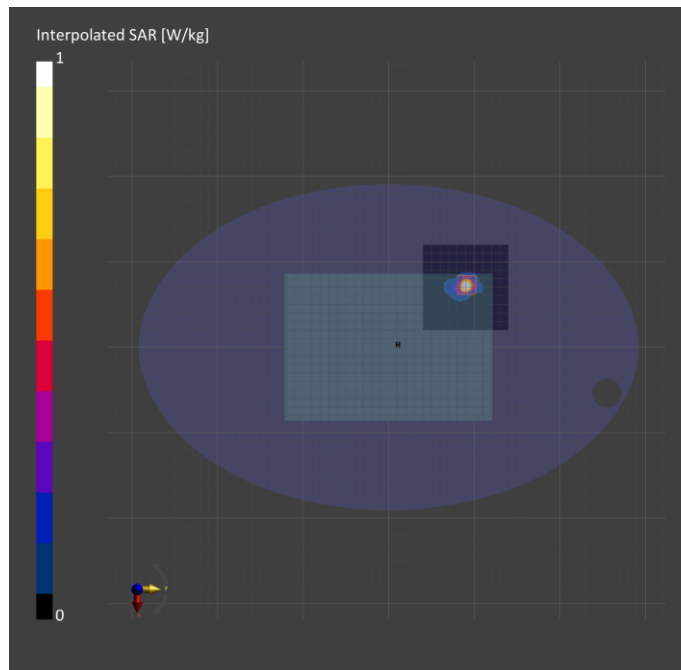
Phantom	TSL, Measured Date	Probe, Calibration Date	DAE, Calibration Date
ELI V6.0 (20deg probe tilt) - 2112	HBBL-600-10000, 2022-Jul-19	EX3DV4 - SN7313, 2022-03-02	DAE4 Sn1668, 2022-04-27

Scan Setup

	Area Scan	Zoom Scan
Grid Extents [mm]	100.0 x 100.0	22.0 x 22.0 x 22.0
Grid Steps [mm]	10.0 x 10.0	4.0 x 4.0 x 1.4
Sensor Surface [mm]	3.0	1.4

Measurement Results

	Area Scan	Zoom Scan
Date	2022-07-19	2022-07-19
psSAR1g [W/kg]	0.785	0.927
psSAR10g [W/kg]	0.206	0.225
Power Drift [dB]		0.09



Measurement Report for Device, Rear, U-NII-3, UID 10583 AAC, Channel 149 (5745.0MHz)

Exposure Conditions

Phantom Section, TSL	Position, Test Distance [mm]	Band	Group, UID	Frequency [MHz], Channel Number	Conversion Factor	TSL Conductivity [S/m]	TSL Permittivity
Flat, HSL	BACK, 14.00	U-NII-3	WLAN, 10583-AAC	5745.0, 149	4.85	5.36	34.4

Hardware Setup

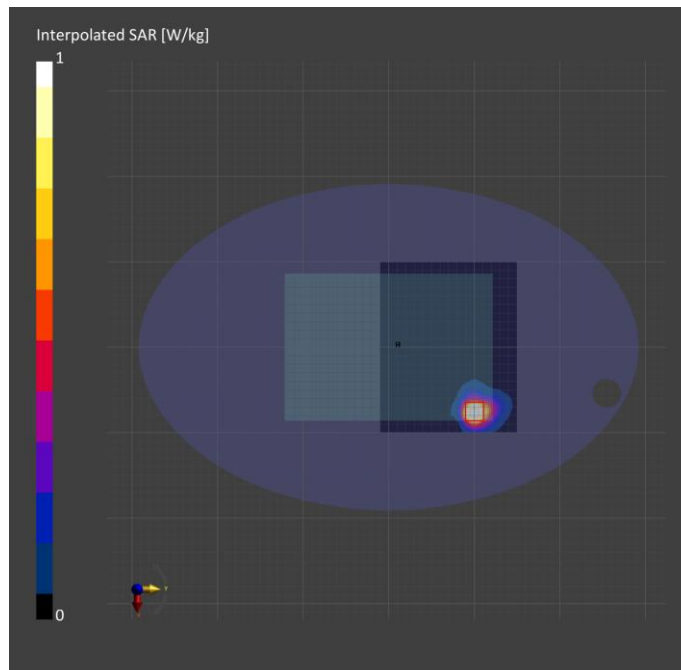
Phantom	TSL, Measured Date	Probe, Calibration Date	DAE, Calibration Date
ELI V6.0 (20deg probe tilt) - 2005	HBBL-600-10000, 2022-Jul-15	EX3DV4 - SN7330, 2022-01-28	DAE4 Sn1468, 2021-09-27

Scan Setup

	Area Scan	Zoom Scan
Grid Extents [mm]	200.0 x 160.0	22.0 x 22.0 x 22.0
Grid Steps [mm]	10.0 x 10.0	4.0 x 4.0 x 1.4
Sensor Surface [mm]	3.0	1.4

Measurement Results

	Area Scan	Zoom Scan
Date	2022-07-15	2022-07-15
psSAR1g [W/kg]	0.925	0.906
psSAR10g [W/kg]	0.351	0.332
Power Drift [dB]		0.01



Measurement Report for Device, Rear, U-NII-3, UID 10583 AAC, Channel 155 (5775.0MHz)

Exposure Conditions

Phantom Section, TSL	Position, Test Distance [mm]	Band	Group, UID	Frequency [MHz], Channel Number	Conversion Factor	TSL Conductivity [S/m]	TSL Permittivity
Flat, HSL	BACK, 0.00	U-NII-3	WLAN, 10583-AAC	5775.0, 155	4.65	5.19	34.5

Hardware Setup

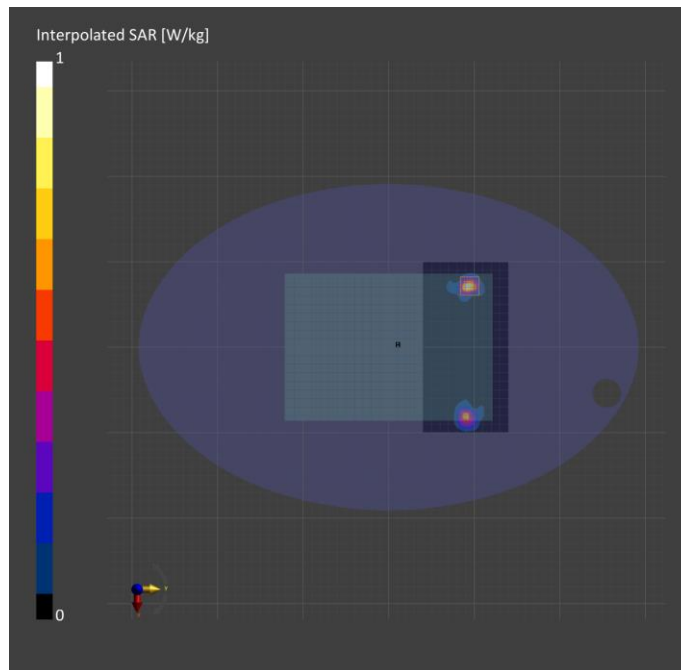
Phantom	TSL, Measured Date	Probe, Calibration Date	DAE, Calibration Date
ELI V6.0 (20deg probe tilt) - 2112	HBBL-600-10000, 2022-Jul-19	EX3DV4 - SN7313, 2022-03-02	DAE4 Sn1668, 2022-04-27

Scan Setup

	Area Scan	Zoom Scan
Grid Extents [mm]	200.0 x 100.0	22.0 x 22.0 x 22.0
Grid Steps [mm]	10.0 x 10.0	4.0 x 4.0 x 1.4
Sensor Surface [mm]	3.0	1.4

Measurement Results

	Area Scan	Zoom Scan
Date	2022-07-20	2022-07-20
psSAR1g [W/kg]	0.616	0.729
psSAR10g [W/kg]	0.171	0.176
Power Drift [dB]		0.08



Measurement Report for Device, Rear, Bluetooth, UID 10032 CAA, Channel 39 (2441.0MHz)

Exposure Conditions

Phantom Section, TSL	Position, Test Distance [mm]	Band	Group, UID	Frequency [MHz], Channel Number	Conversion Factor	TSL Conductivity [S/m]	TSL Permittivity
Flat, HSL	BACK, 0.00	ISM 2.4 GHz Band	Bluetooth, 10032-CAA	2441.0, 39	7.64	1.82	38.8

Hardware Setup

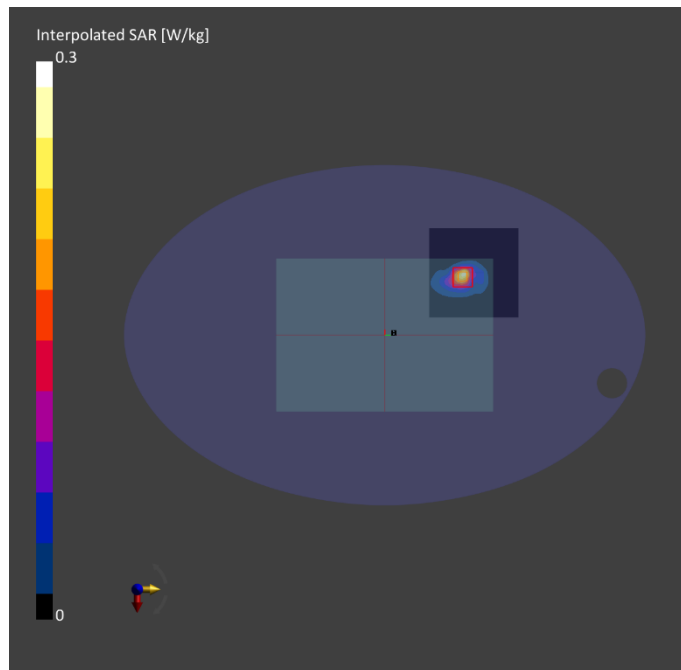
Phantom	TSL, Measured Date	Probe, Calibration Date	DAE, Calibration Date
ELI V6.0 (20deg probe tilt) - 2112	HBBL-600-10000, 2022-Jul-19	EX3DV4 - SN7313, 2022-03-02	DAE4 Sn1668, 2022-04-27

Scan Setup

	Area Scan	Zoom Scan
Grid Extents [mm]	100.0 x 100.0	30.0 x 30.0 x 30.0
Grid Steps [mm]	10.0 x 10.0	4.9 x 4.9 x 1.5
Sensor Surface [mm]	3.0	1.4

Measurement Results

	Area Scan	Zoom Scan
Date	2022-07-21	2022-07-21
psSAR1g [W/kg]	0.197	0.207
psSAR10g [W/kg]	0.086	0.084
Power Drift [dB]		0.18



Measurement Report for Device, Rear, Bluetooth, UID 10032 CAA, Channel 39 (2441.0MHz)

Exposure Conditions

Phantom Section, TSL	Position, Test Distance [mm]	Band	Group, UID	Frequency [MHz], Channel Number	Conversion Factor	TSL Conductivity [S/m]	TSL Permittivity
Flat, HSL	BACK, 14.00	ISM 2.4 GHz Band	Bluetooth, 10032-CAA	2441.0, 39	7.64	1.89	40.6

Hardware Setup

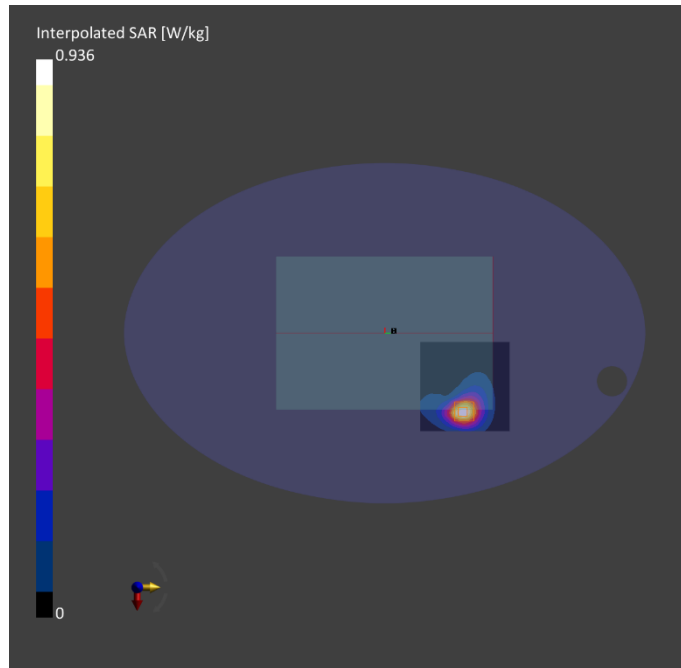
Phantom	TSL, Measured Date	Probe, Calibration Date	DAE, Calibration Date
ELI V6.0 (20deg probe tilt) - 2112	HBBL-600-10000, 2022-Jul-19	EX3DV4 - SN7313, 2022-03-02	DAE4 Sn1668, 2022-04-27

Scan Setup

	Area Scan	Zoom Scan
Grid Extents [mm]	100.0 x 100.0	30.0 x 30.0 x 30.0
Grid Steps [mm]	10.0 x 10.0	5.0 x 5.0 x 1.5
Sensor Surface [mm]	3.0	1.4

Measurement Results

	Area Scan	Zoom Scan
Date	2022-07-21	2022-07-21
psSAR1g [W/kg]	0.458	0.477
psSAR10g [W/kg]	0.228	0.237
Power Drift [dB]		-0.03



Measurement Report for Device, Rear, NFC, UID 0 -, Channel 13600 (13.6MHz)

Exposure Conditions

Phantom Section, TSL	Position, Test Distance [mm]	Band	Group, UID	Frequency [MHz], Channel Number	Conversion Factor	TSL Conductivity [S/m]	TSL Permittivity
Flat, HSL	BACK, 0.00	Custom Band	CW, 0--	13.6, 13600	17.91	0.748	53.7

Hardware Setup

Phantom	TSL, Measured Date	Probe, Calibration Date	DAE, Calibration Date
ELI V6.0 (20deg probe tilt) - 2112	HBBL-600-10000, 2022-Jul-18	EX3DV4 - SN7313, 2022-03-02	DAE4 Sn1668, 2022-04-27

Scan Setup

	Area Scan	Zoom Scan
Grid Extents [mm]	210.0 x 120.0	30.0 x 30.0 x 30.0
Grid Steps [mm]	15.0 x 15.0	4.8 x 4.8 x 1.4
Sensor Surface [mm]	3.0	1.4

Measurement Results

	Area Scan	Zoom Scan
Date	2022-07-18	2022-07-18
psSAR1g [W/kg]	0.047	0.049
psSAR10g [W/kg]	0.035	0.020
Power Drift [dB]		0.12

