

20150112_SystemPerformanceCheck-D2450V2 SN 748

Frequency: 2450 MHz; Duty Cycle: 1:1; Room Ambient Temperature: 24.0°C; Liquid Temperature: 23.0°C

Medium parameters used: $f = 2450 \text{ MHz}$; $\sigma = 2.019 \text{ S/m}$; $\epsilon_r = 51.377$; $\rho = 1000 \text{ kg/m}^3$

DASY5 Configuration:

- Area Scan Setting: Find Secondary Maximum Within: 2.0 dB and with a peak SAR value greater than 0.0012W/kg
- Electronics: DAE4 Sn1352; Calibrated: 11/7/2014
- Probe: EX3DV4 - SN3902; ConvF(7.35, 7.35, 7.35); Calibrated: 5/19/2014;
- Sensor-Surface: 2.5mm (Mechanical Surface Detection (Locations From Previous Scan Used)), Sensor-Surface: 2.5mm (Mechanical Surface Detection)
- Phantom: ELI-B v5.0; Type: QDOVA002AA; Serial: TP:1195

Body/Pin=100 mW/Area Scan (8x8x1): Measurement grid: dx=12mm, dy=12mm

Maximum value of SAR (measured) = 5.69 W/kg

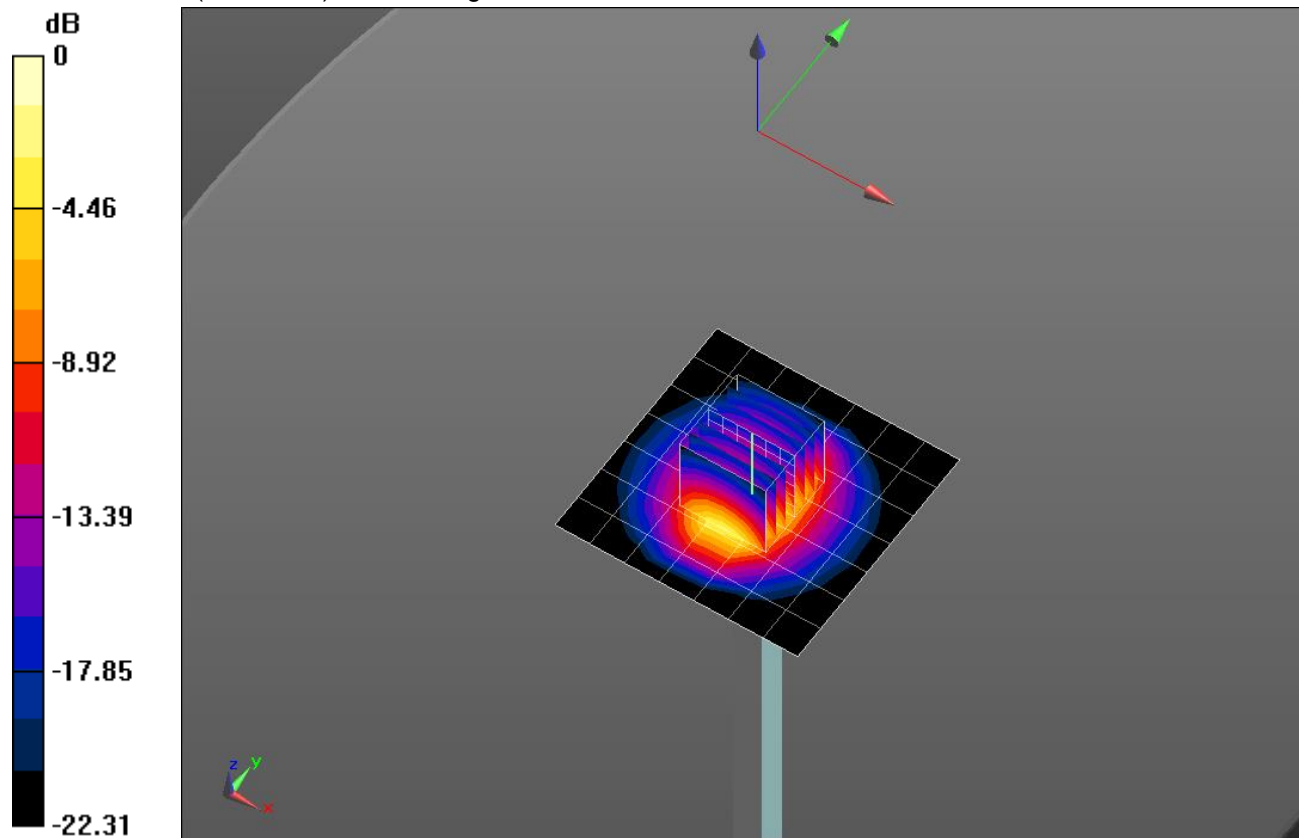
Body/Pin=100 mW/Zoom Scan (7x7x7)/Cube 0: Measurement grid: dx=5mm, dy=5mm, dz=5mm

Reference Value = 61.235 V/m; Power Drift = 0.07 dB

Peak SAR (extrapolated) = 11.3 W/kg

SAR(1 g) = 5.4 W/kg; SAR(10 g) = 2.48 W/kg

Maximum value of SAR (measured) = 7.70 W/kg

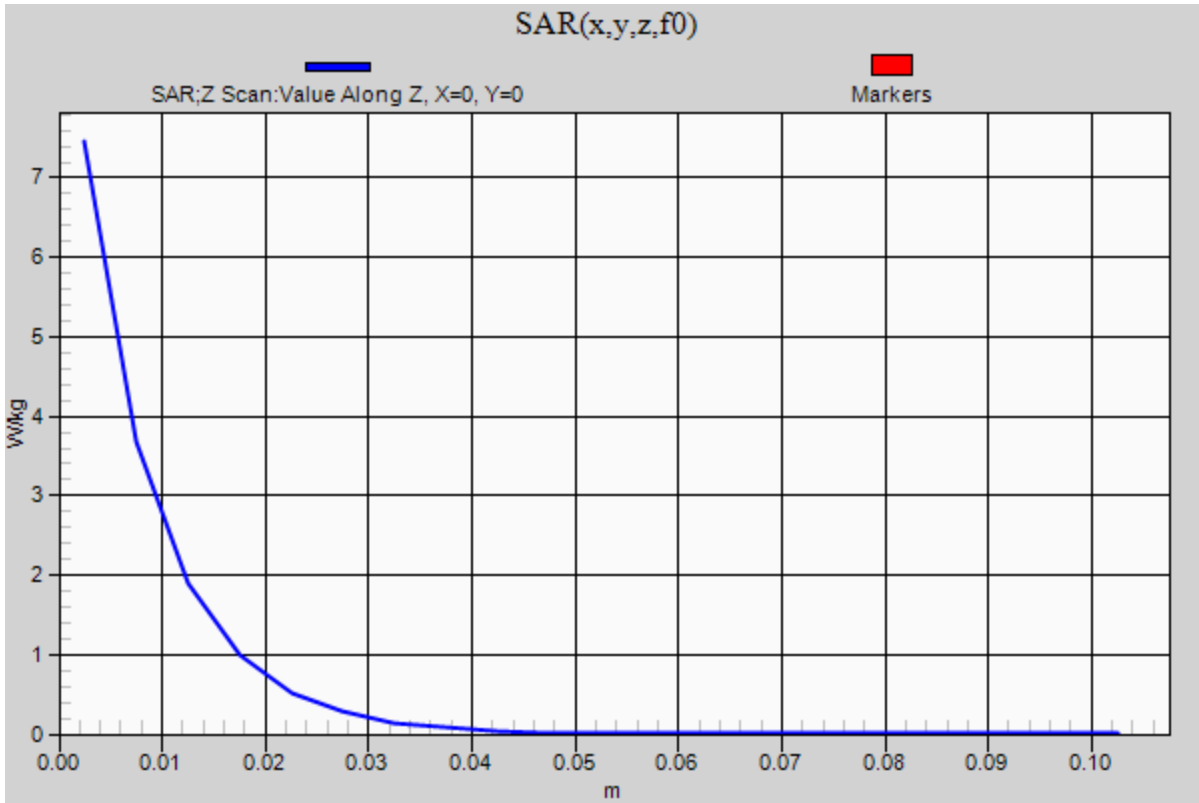


0 dB = 7.70 W/kg = 8.86 dBW/kg

20150112_SystemPerformanceCheck-D2450V2 SN 748

Frequency: 2450 MHz; Duty Cycle: 1:1

Body/Pin=100 mW/Z Scan (1x1x21): Measurement grid: dx=20mm, dy=20mm, dz=5mm
Maximum value of SAR (measured) = 7.46 W/kg



20150115 SystemPerformanceCheck-D5GHzV2 SN 1003

Frequency: 5600 MHz; Duty Cycle: 1:1; Room Ambient Temperature: 24.0°C; Liquid Temperature: 23.0°C

Medium parameters used: $f = 5600 \text{ MHz}$; $\sigma = 5.994 \text{ S/m}$; $\epsilon_r = 48.245$; $\rho = 1000 \text{ kg/m}^3$

DASY5 Configuration:

- Area Scan Setting: Find Secondary Maximum Within: 2.0 dB and with a peak SAR value greater than 0.0012W/kg
- Electronics: DAE4 Sn1352; Calibrated: 11/7/2014
- Probe: EX3DV4 - SN3902; ConvF(3.73, 3.73, 3.73); Calibrated: 5/19/2014;
- Sensor-Surface: 1.4mm (Mechanical Surface Detection)
- Phantom: ELI-A v5.0; Type: QDOVA002AA; Serial: TP 1194

Body/5.6 GHz, Pin=100mW/Area Scan (7x7x1): Measurement grid: dx=10mm, dy=10mm

Maximum value of SAR (measured) = 21.0 W/kg

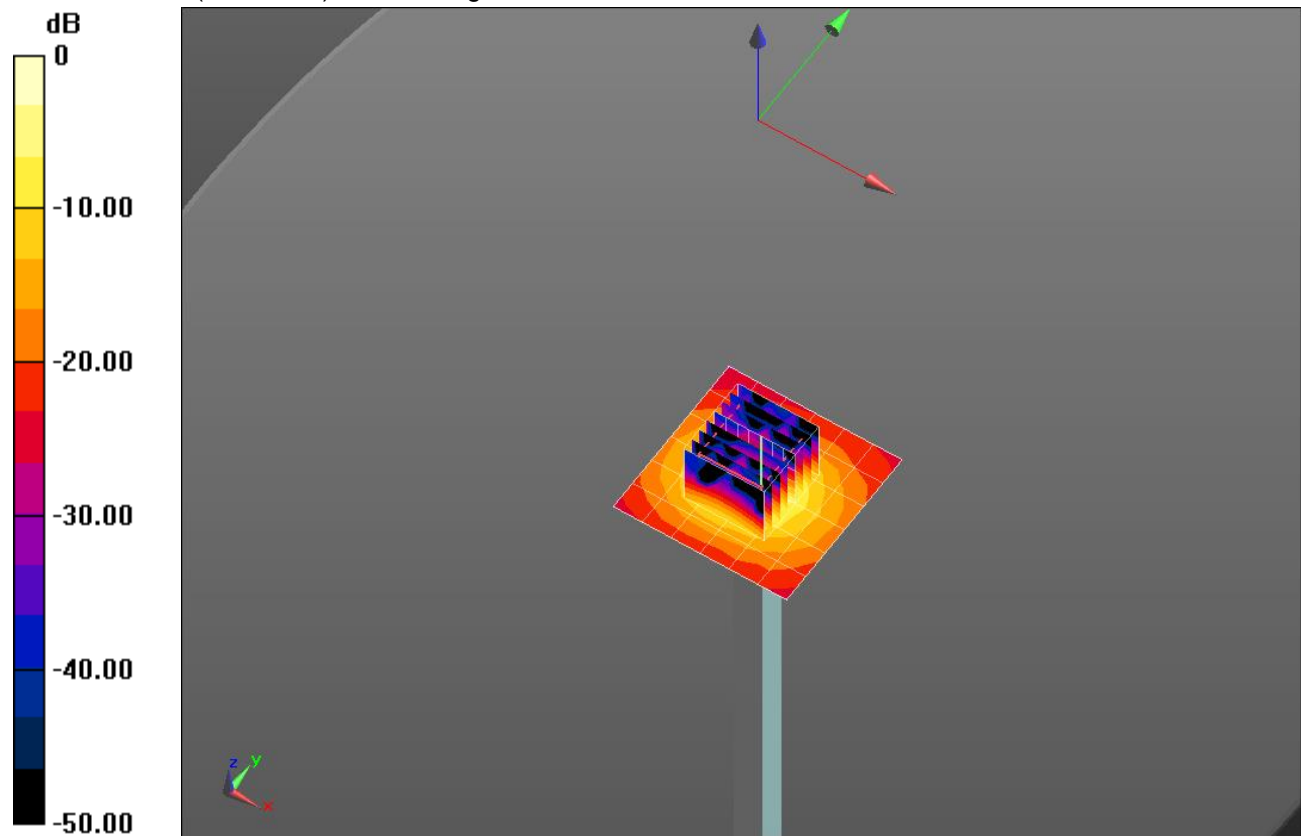
Body/5.6 GHz, Pin=100mW/Zoom Scan (8x8x7)/Cube 0: Measurement grid: dx=4mm, dy=4mm, dz=1.4mm

Reference Value = 53.540 V/m; Power Drift = -0.03 dB

Peak SAR (extrapolated) = 35.9 W/kg

SAR(1 g) = 8.47 W/kg; SAR(10 g) = 2.39 W/kg

Maximum value of SAR (measured) = 20.2 W/kg



0 dB = 20.2 W/kg = 13.05 dBW/kg

20150115 SystemPerformanceCheck-D5GHzV2 SN 1003

Frequency: 5600 MHz; Duty Cycle: 1:1

Body/5.6 GHz, Pin=100mW/Z Scan (1x1x21): Measurement grid: dx=20mm, dy=20mm, dz=5mm
Maximum value of SAR (measured) = 14.8 W/kg

