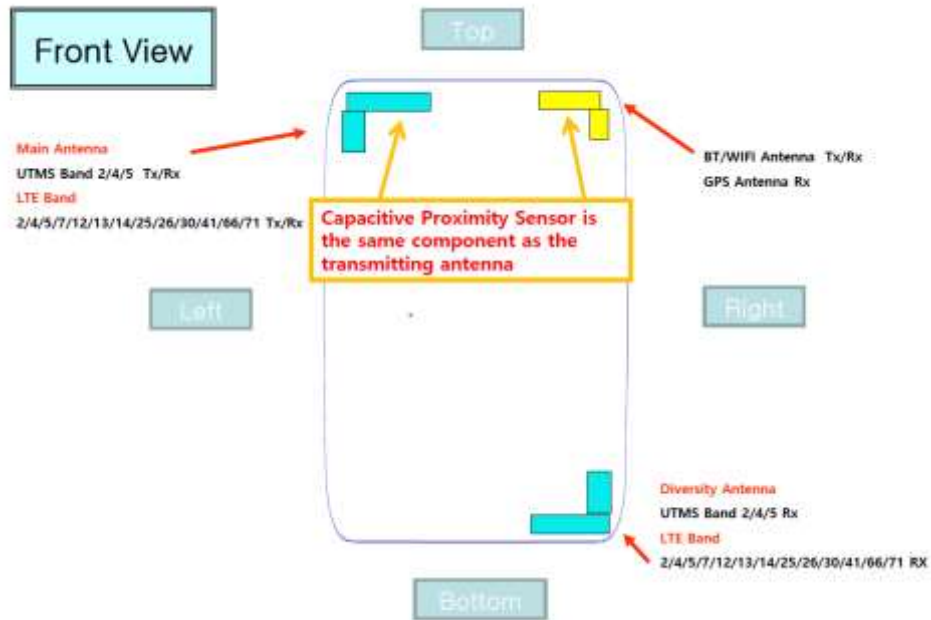


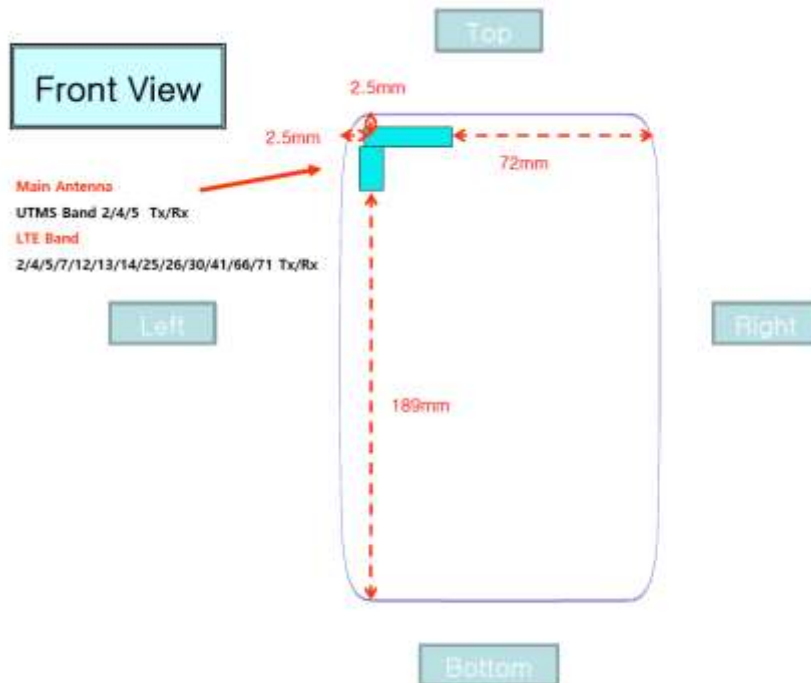
Attachment 8.

- DUT Antenna Information and SAR Test SETUP PHOTOGRAPHS

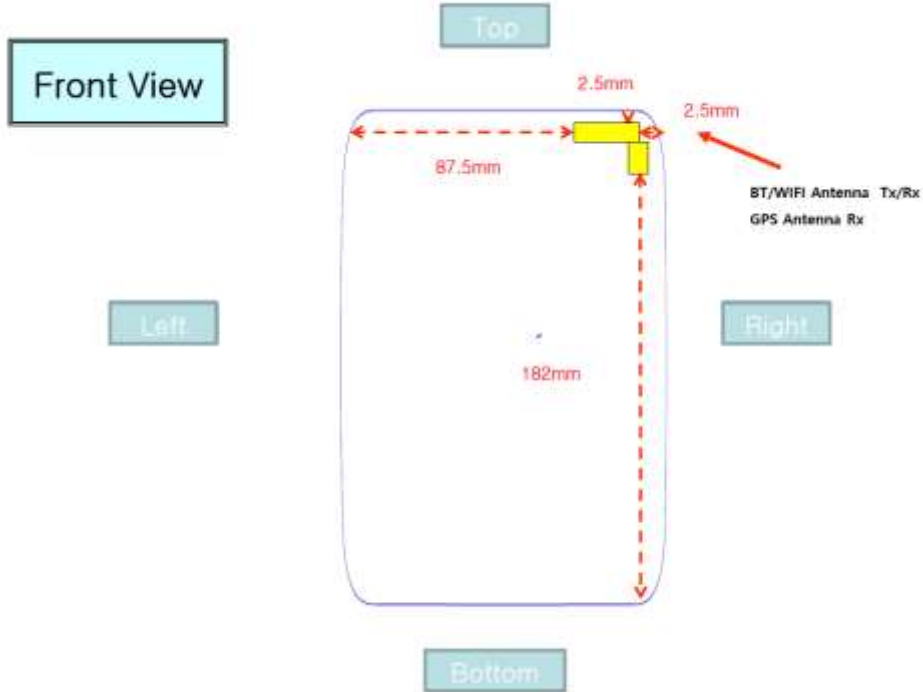
- DUT Antenna Information



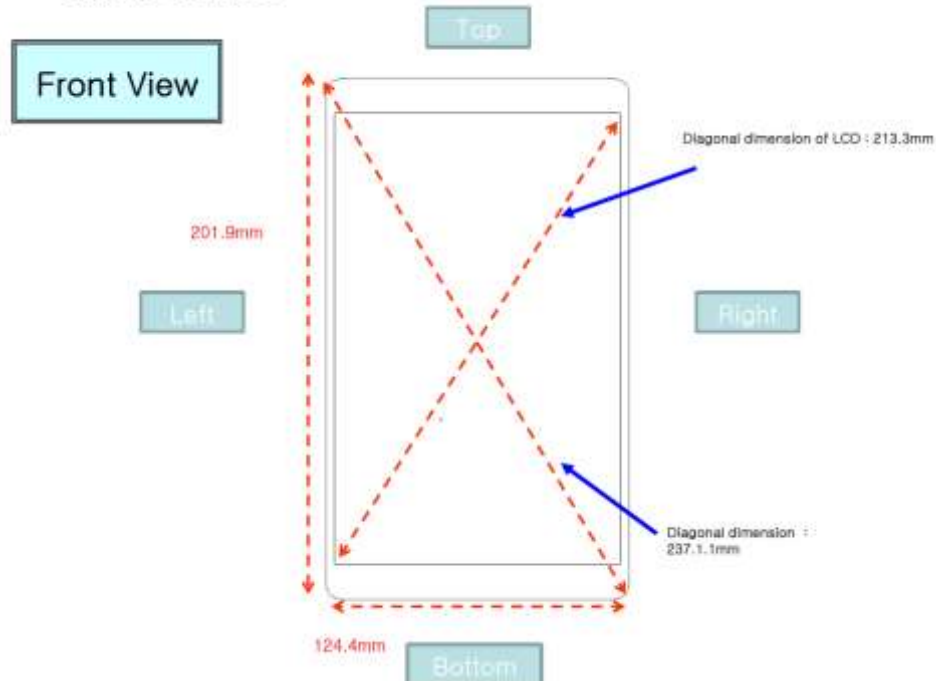
* Distance between Main antenna



* Distance between BT/WIFI/GPS antenna



* Diagonal Distance



1. Body

1.1 Body All



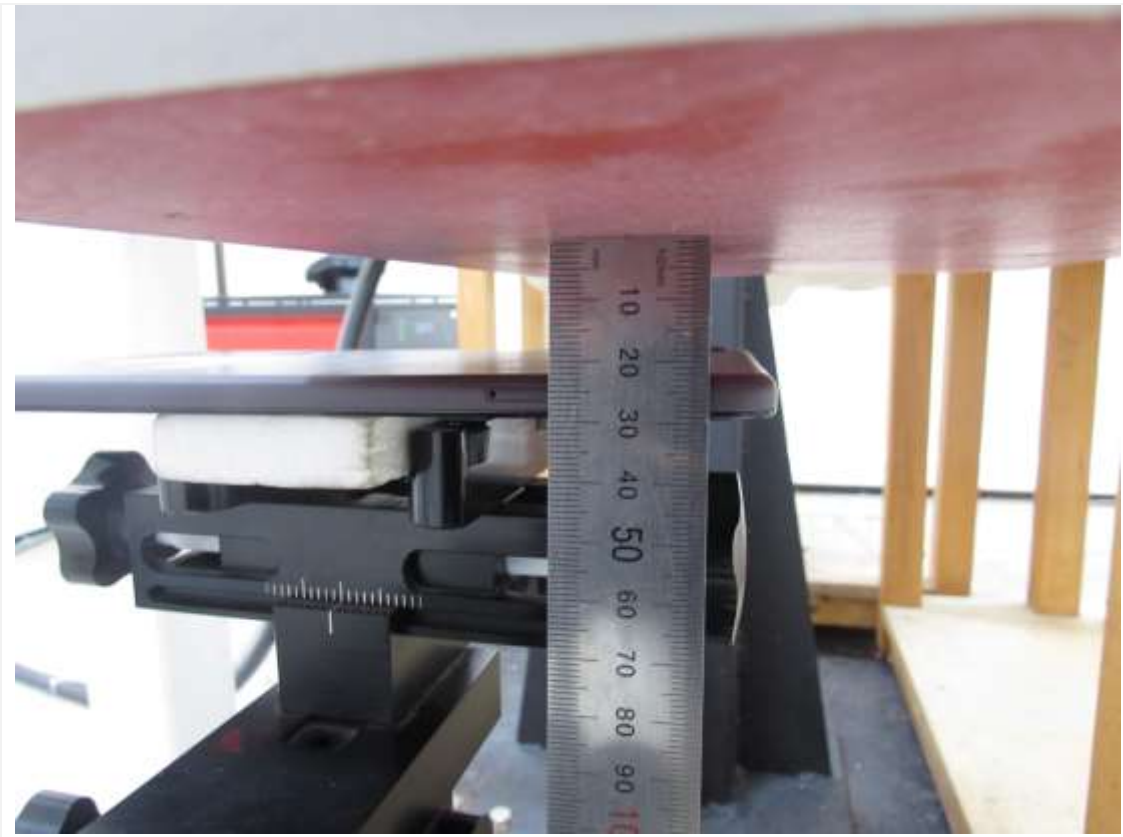
1.2 Body Rear



Distance of 0 mm from the EUT



Distance of 12 mm from the EUT



Distance of 22 mm from the EUT

1.3 Body Left



Distance of 0 mm from the EUT



Distance of 11 mm from the EUT

1.4 Body Right



Distance of 0 mm from the EUT

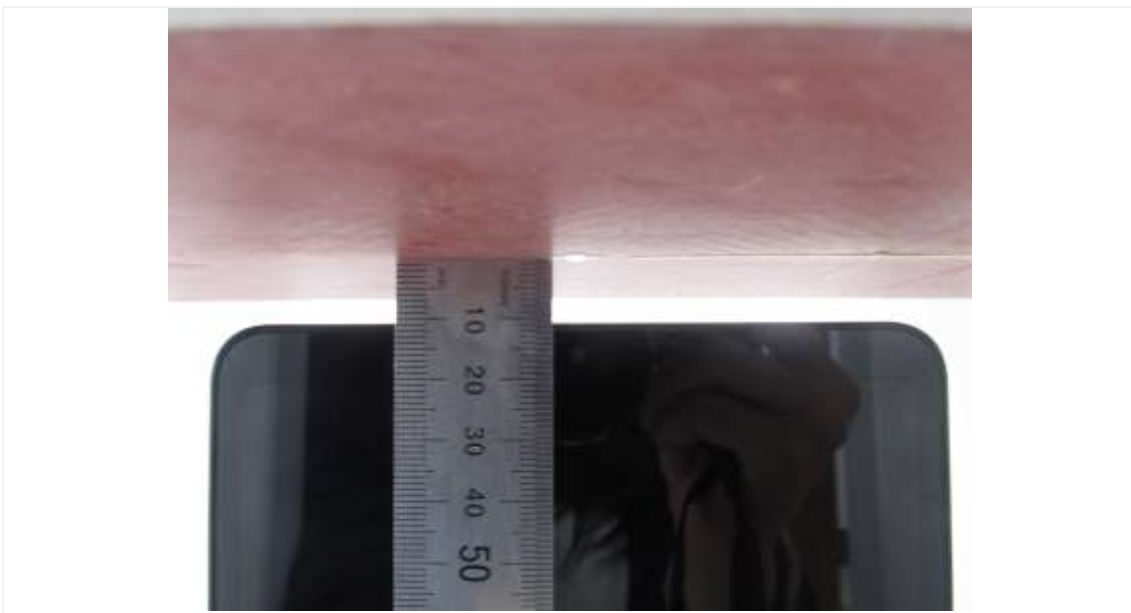


Distance of 3 mm from the EUT

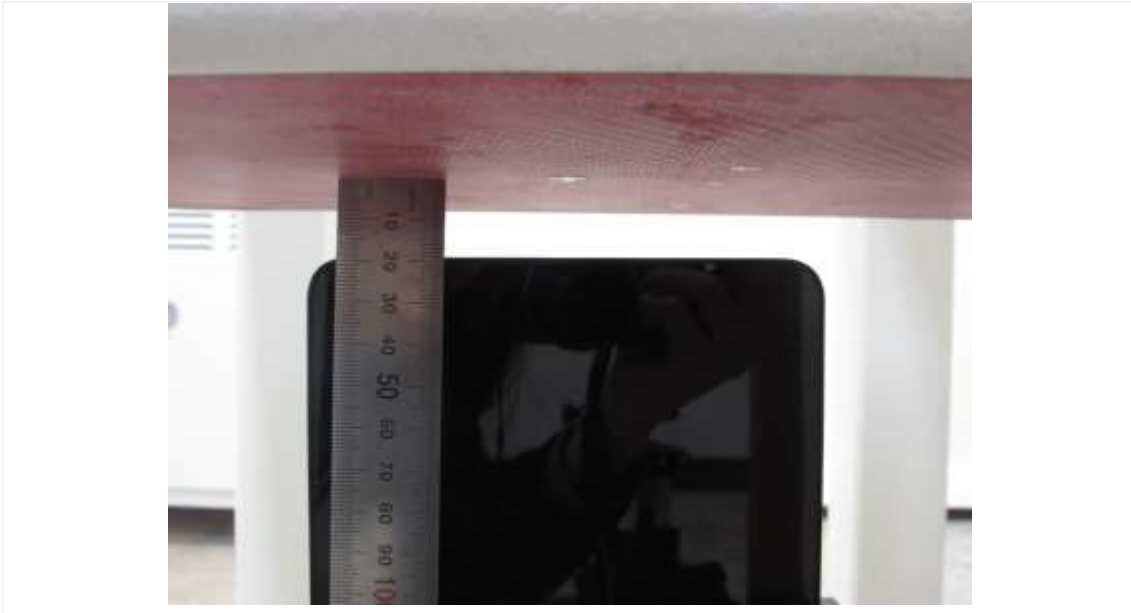
1.5 Body Top



Distance of 0 mm from the EUT

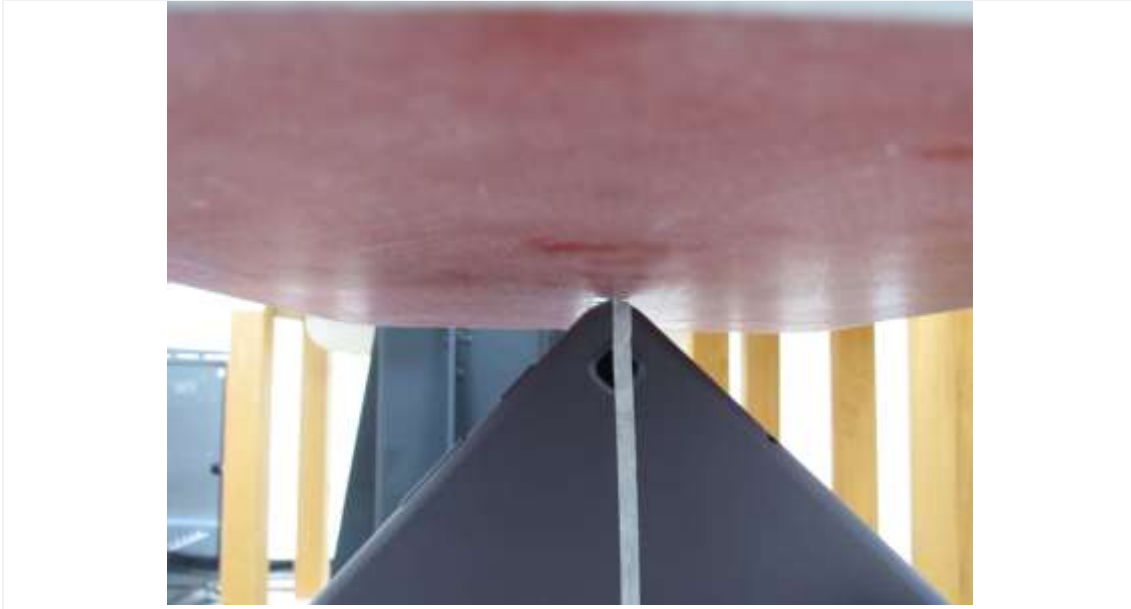


Distance of 11 mm from the EUT



Distance of 19 mm from the EUT

1.6 Body Right Corner



Distance of 0 mm from the EUT

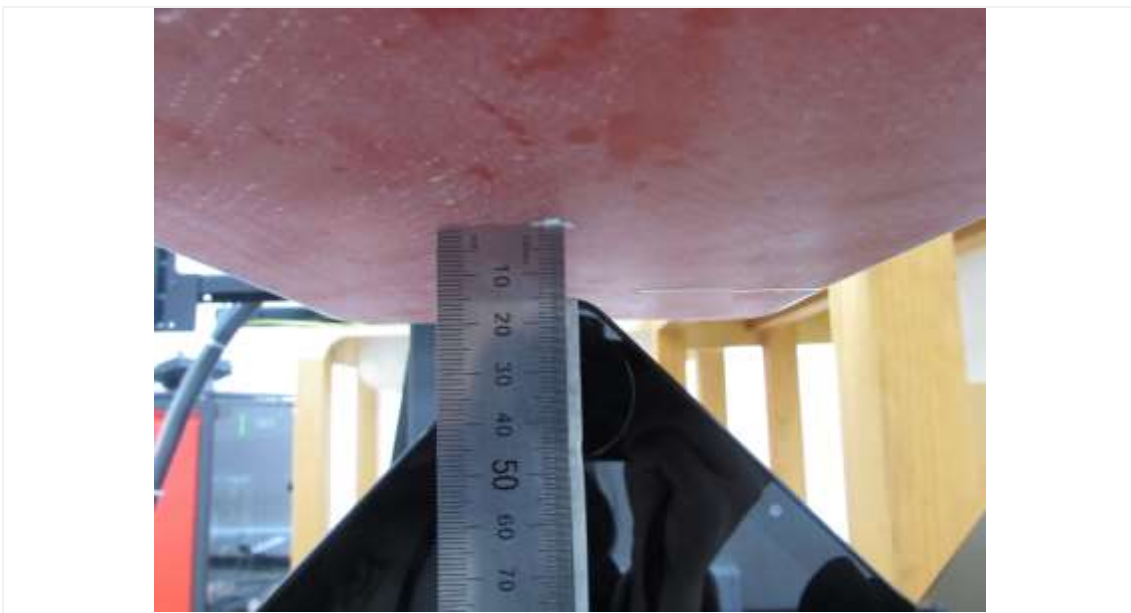


Distance of 9 mm from the EUT

1.7 Body Left Corner



Distance of 0 mm from the EUT



Distance of 15 mm from the EUT