

20160211_SystemPerformanceCheck-D2450V2 SN 939

Frequency: 2450 MHz; Duty Cycle: 1:1; Room Ambient Temperature: 24.0°C; Liquid Temperature: 23.0°C

Medium parameters used: $f = 2450$ MHz; $\sigma = 1.878$ S/m; $\epsilon_r = 37.912$; $\rho = 1000$ kg/m³

DASY5 Configuration:

- Area Scan Setting: Find Secondary Maximum Within: 2.0 dB and with a peak SAR value greater than 0.0012W/kg
- Averaged Fast SAR: Polynomial fit
- Electronics: DAE4 Sn1447; Calibrated: 2015-09-23
- Probe: EX3DV4 - SN7314; ConvF(7.18, 7.18, 7.18); Calibrated: 2015-09-25;
- Sensor-Surface: 4mm (Mechanical Surface Detection)
- Phantom: SAM (20deg probe tilt) with CRP v5.0(Right); Type: QD000P40CD; Serial: TP:xxxx

Head/Pin=100 mW/Area Scan (81x71x1): Interpolated grid: dx=1.200 mm, dy=1.200 mm

Reference Value = 68.63 V/m; Power Drift = 0.05 dB

Fast SAR: SAR(1 g) = 5.62 W/kg; SAR(10 g) = 2.54 W/kg

Maximum value of SAR (interpolated) = 6.65 W/kg

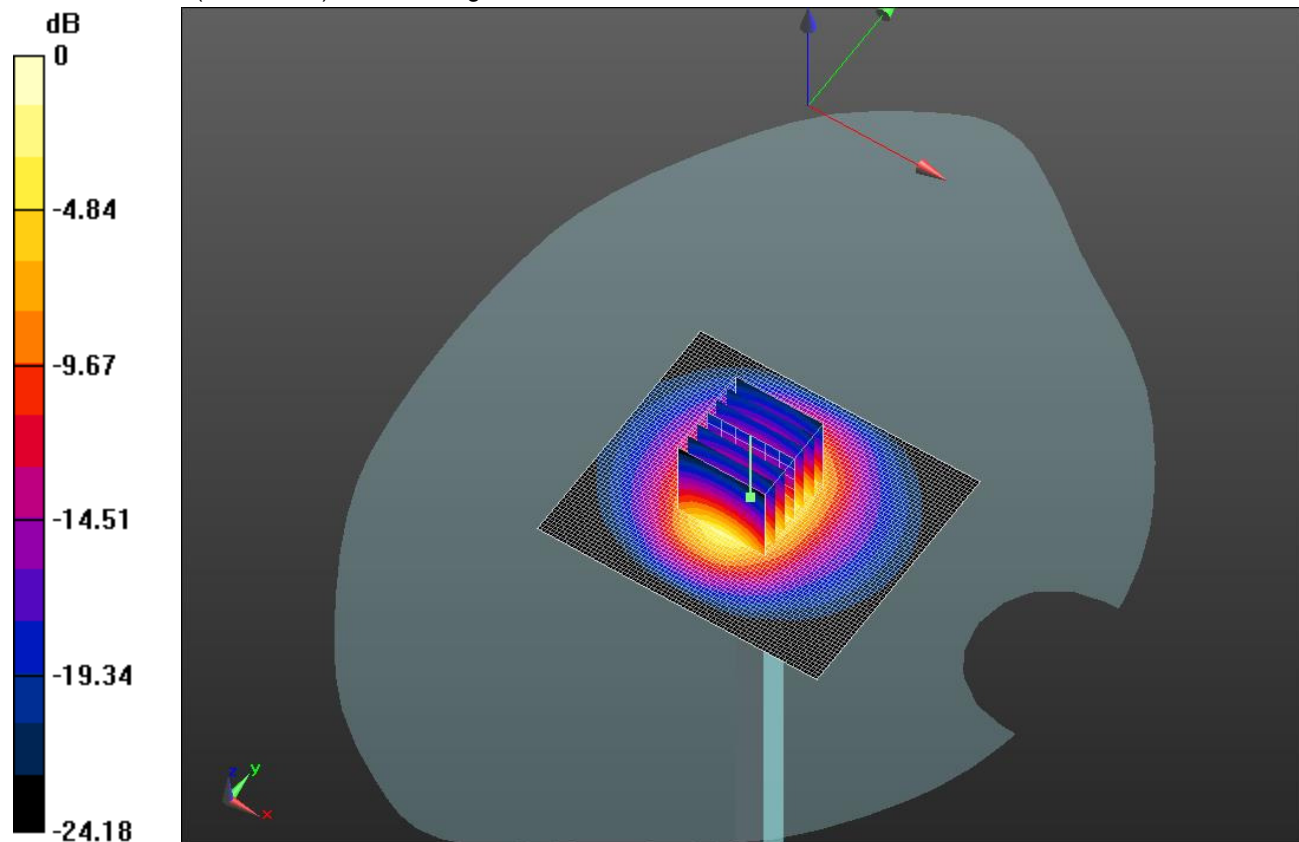
Head/Pin=100 mW/Zoom Scan (7x7x7) (7x7x7)/Cube 0: Measurement grid: dx=5mm, dy=5mm, dz=5mm

Reference Value = 68.63 V/m; Power Drift = 0.05 dB

Peak SAR (extrapolated) = 12.5 W/kg

SAR(1 g) = 5.6 W/kg; SAR(10 g) = 2.53 W/kg

Maximum value of SAR (measured) = 6.32 W/kg

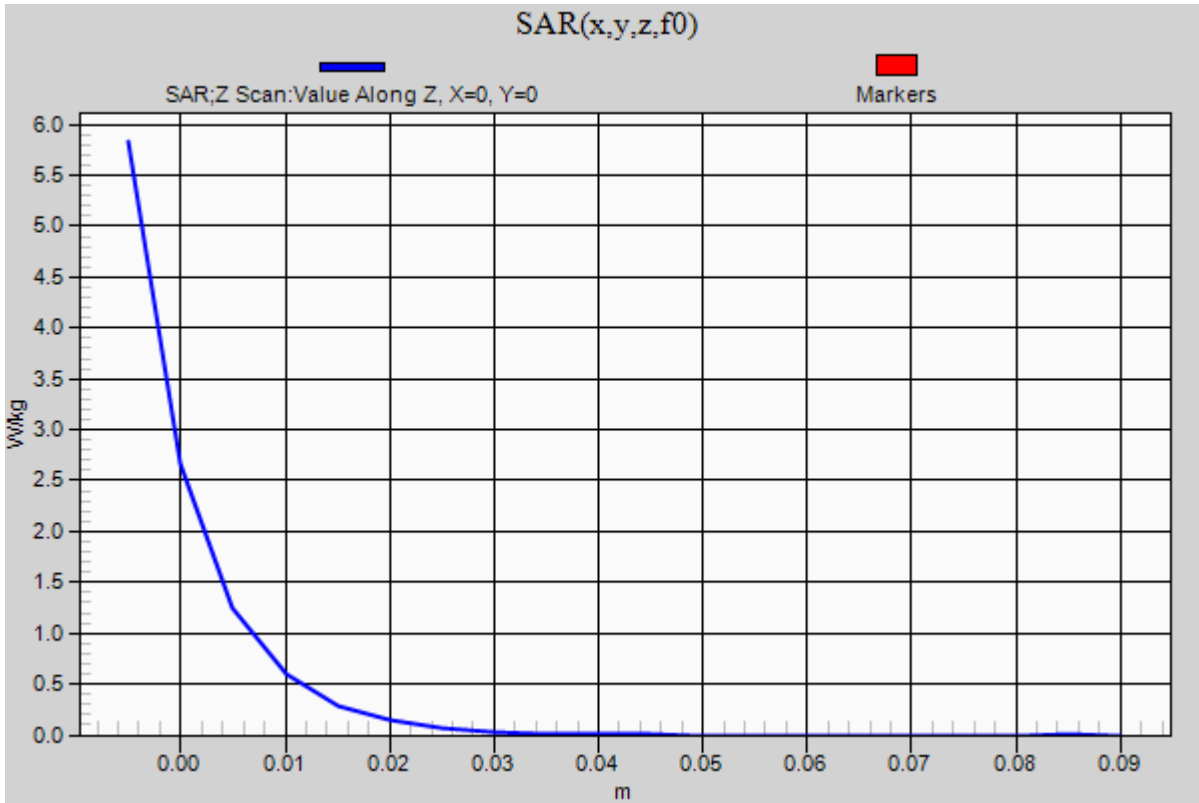


0 dB = 6.32 W/kg = 8.01 dBW/kg

20160211_SystemPerformanceCheck-D2450V2 SN 939

Frequency: 2450 MHz; Duty Cycle: 1:1

Head/Pin=100 mW/Z Scan (1x1x21): Measurement grid: dx=20mm, dy=20mm, dz=5mm
Maximum value of SAR (measured) = 5.83 W/kg



20160218_SystemPerformanceCheck-D835V2 SN 4d194

Frequency: 835 MHz; Duty Cycle: 1:1; Room Ambient Temperature: 24.0°C; Liquid Temperature: 23.0°C
 Medium parameters used: $f = 835 \text{ MHz}$; $\sigma = 0.988 \text{ S/m}$; $\epsilon_r = 53.504$; $\rho = 1000 \text{ kg/m}^3$

DASY5 Configuration:

- Area Scan Setting: Find Secondary Maximum Within: 2.0 dB and with a peak SAR value greater than 0.0012W/kg
- Averaged Fast SAR: Polynomial fit
- Electronics: DAE4 Sn1468; Calibrated: 2015-09-15
- Probe: EX3DV4 - SN7376; ConvF(10.07, 10.07, 10.07); Calibrated: 2015-09-02;
- Sensor-Surface: 2mm (Mechanical Surface Detection)
- Phantom: ELLI v6.0; Type: QDOVA003AA; Serial: TP:xxxx

Body/Pin=100 mW/Area Scan (7x13x1): Measurement grid: dx=15mm, dy=15mm

Maximum value of SAR (measured) = 1.25 W/kg

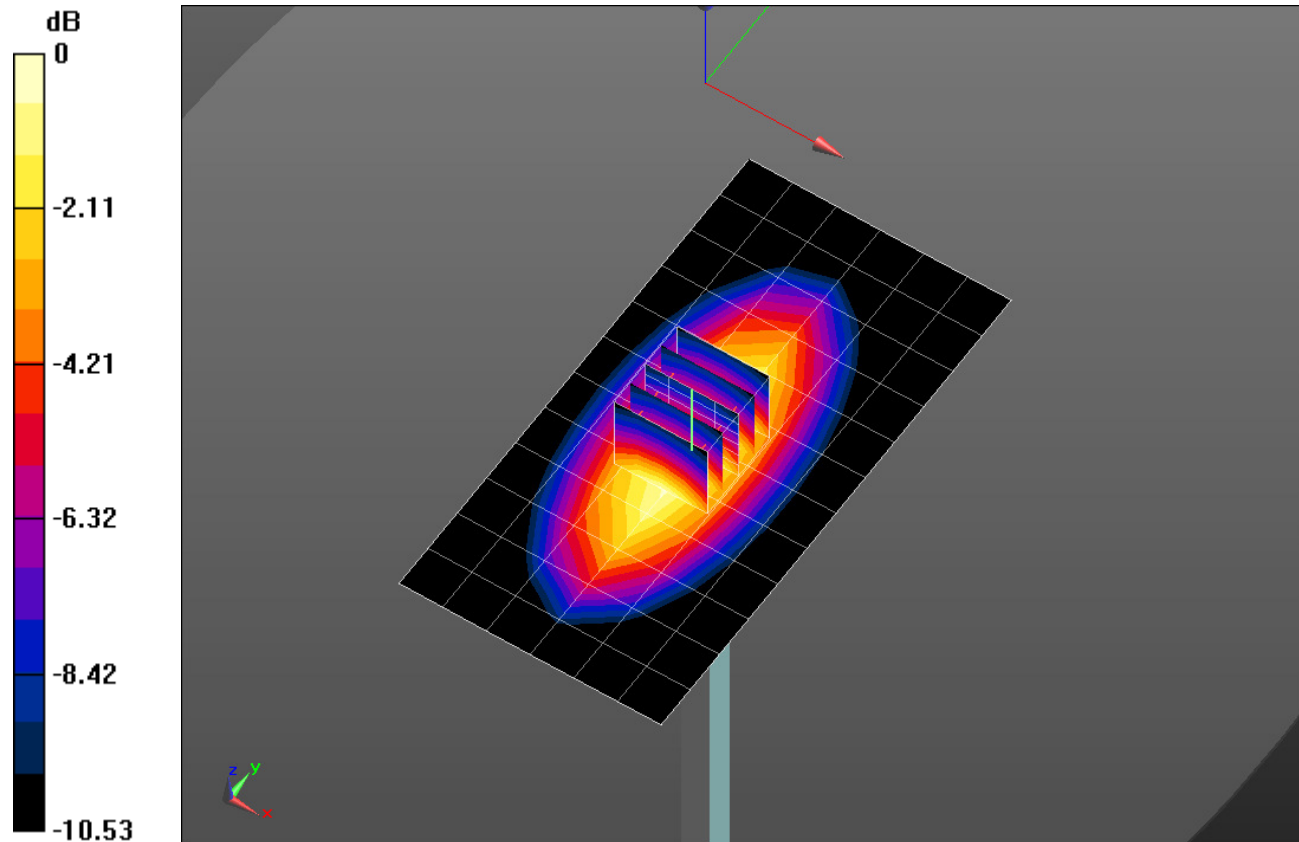
Body/Pin=100 mW/Zoom Scan (5x5x7)/Cube 0: Measurement grid: dx=8mm, dy=8mm, dz=5mm

Reference Value = 36.41 V/m; Power Drift = 0.02 dB

Peak SAR (extrapolated) = 1.48 W/kg

SAR(1 g) = 1.01 W/kg; SAR(10 g) = 0.664 W/kg

Maximum value of SAR (measured) = 1.27 W/kg

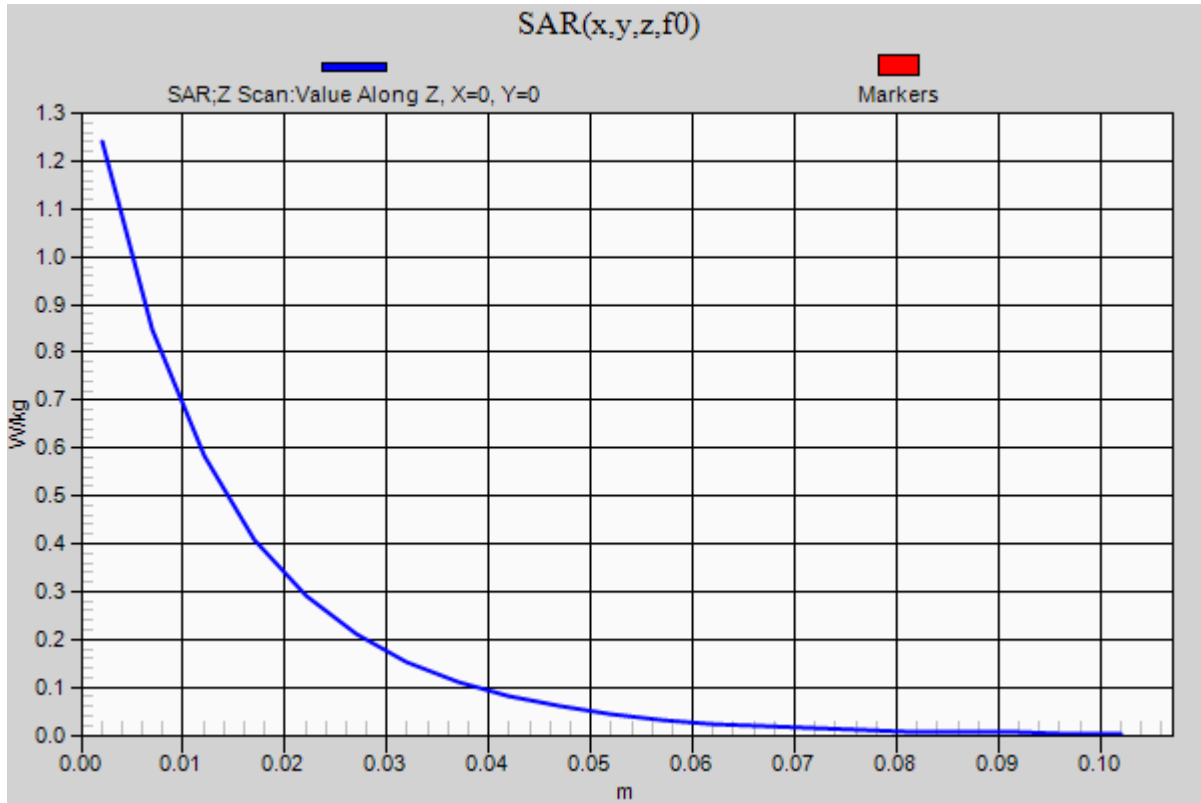


0 dB = 1.27 W/kg = 1.04 dBW/kg

20160218_SystemPerformanceCheck-D835V2 SN 4d194

Frequency: 835 MHz; Duty Cycle: 1:1

Body/Pin=100 mW/Z Scan (1x1x21): Measurement grid: dx=20mm, dy=20mm, dz=5mm
Maximum value of SAR (measured) = 1.24 W/kg



20160220_SystemPerformanceCheck-D1900V2 SN 5d190

Frequency: 1900 MHz; Duty Cycle: 1:1; Room Ambient Temperature: 24.0°C; Liquid Temperature: 23.0°C

Medium parameters used: $f = 1900 \text{ MHz}$; $\sigma = 1.45 \text{ S/m}$; $\epsilon_r = 39.18$; $\rho = 1000 \text{ kg/m}^3$

DASY5 Configuration:

- Area Scan Setting: Find Secondary Maximum Within: 2.0 dB and with a peak SAR value greater than 0.0012W/kg
- Averaged Fast SAR: Polynomial fit
- Electronics: DAE4 Sn1494; Calibrated: 2015-11-11
- Probe: EX3DV4 - SN7313; ConvF(7.85, 7.85, 7.85); Calibrated: 2015-12-30;
- Sensor-Surface: 2mm (Mechanical Surface Detection)
- Phantom: SAM Phantom CRP v5.0(Right); Type: QD000P40CD; Serial: TP:1855

Head/Pin=100 mW/Area Scan (61x61x1): Interpolated grid: dx=1.500 mm, dy=1.500 mm

Reference Value = 59.00 V/m; Power Drift = 0.04 dB

Fast SAR: SAR(1 g) = 3.87 W/kg; SAR(10 g) = 2.02 W/kg

Maximum value of SAR (interpolated) = 5.46 W/kg

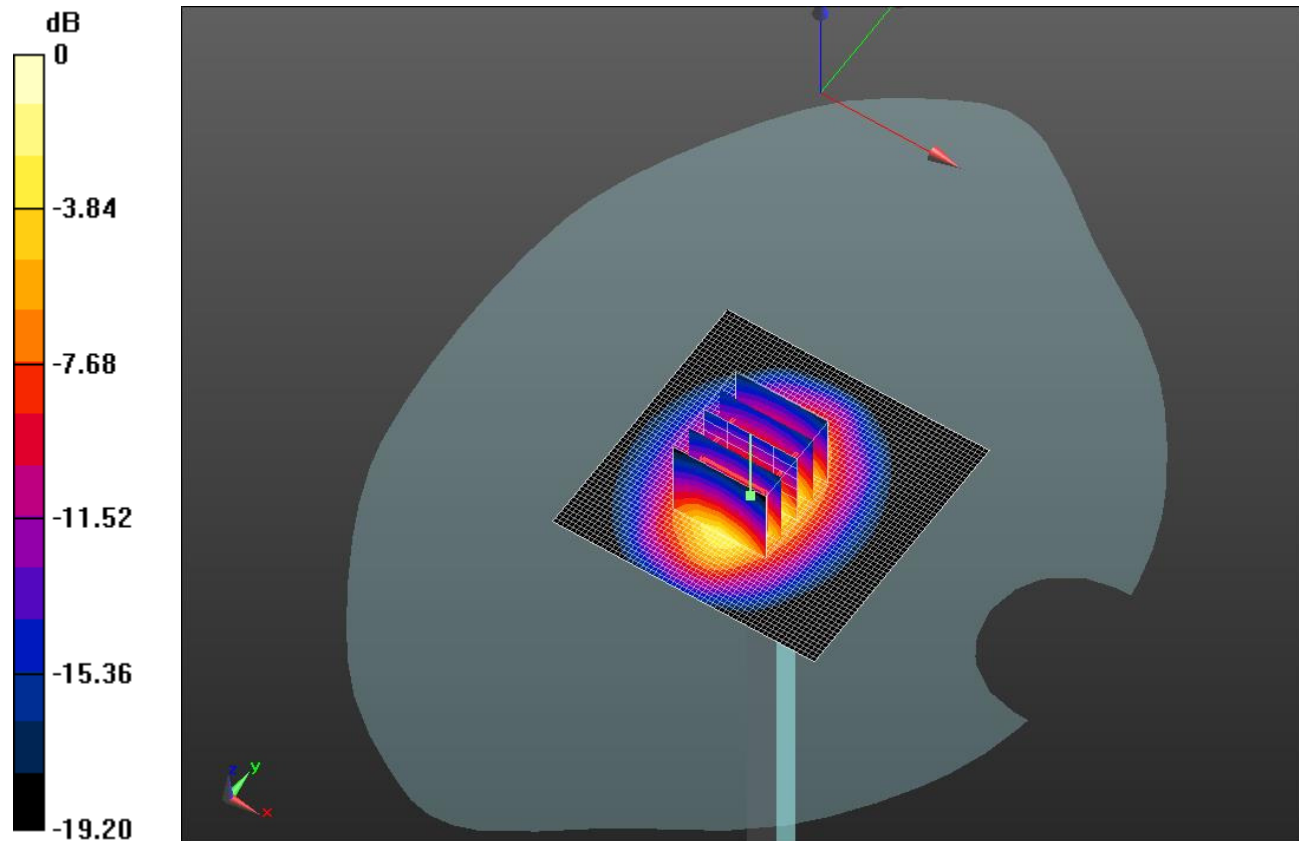
Head/Pin=100 mW/Zoom Scan (5x5x7)/Cube 0: Measurement grid: dx=8mm, dy=8mm, dz=5mm

Reference Value = 59.00 V/m; Power Drift = 0.04 dB

Peak SAR (extrapolated) = 6.86 W/kg

SAR(1 g) = 3.72 W/kg; SAR(10 g) = 1.92 W/kg

Maximum value of SAR (measured) = 5.32 W/kg



0 dB = 5.32 W/kg = 7.26 dBW/kg

20160220_SystemPerformanceCheck-D1900V2 SN 5d190

Frequency: 1900 MHz; Duty Cycle: 1:1

Head/Pin=100 mW/Z Scan (1x1x21): Measurement grid: dx=20mm, dy=20mm, dz=5mm
Maximum value of SAR (measured) = 4.63 W/kg

