

APPENDIX B: POWER DENSITY SYSTEM VERIFICATION PLOTS

Date: 2023-09-22

30 GHz System Verification

Device Under Test Properties

DUT	Serial Number
30 GHz Verification Source	1035

Exposure Conditions

Phantom Section	Position	Test Distance [mm]	Band	Frequency [MHz]
5G	FRONT	5.55	CW	30000.0

Hardware/Software Setup

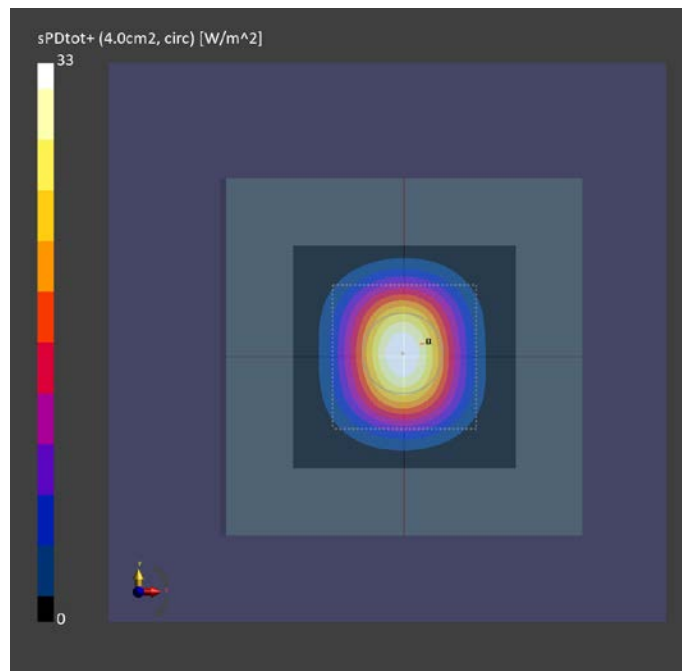
Probe, Calibration Date	DAE, Calibration Date	Software	Software Version
EUmmWV4 - SN9622, 2023-02-15	DAE4ip - SN1639, 2022-11-16	cDASY6 Module mmWave	3.2.0.1840

Scans Setup

Scan Type	5G Scan
Grid Extents [mm]	60.0 x 60.0
Grid Steps [lambda]	0.25 x 0.25
Sensor Surface [mm]	5.55

Measurement Results

Scan Type	5G Scan
Avg. Area [cm ²]	4.00
pS _{tot} avg [W/m ²]	33.0
pS _n avg [W/m ²]	32.6
E _{peak} [V/m]	129
Deviation [dB] pS _{tot}	0.04
Deviation [dB] pS _n	-0.01



Date: 2023-09-25

30 GHz System Verification

Device Under Test Properties

DUT	Serial Number
30 GHz Verification Source	1035

Exposure Conditions

Phantom Section	Position	Test Distance [mm]	Band	Frequency [MHz]
5G	FRONT	5.55	CW	30000.0

Hardware/Software Setup

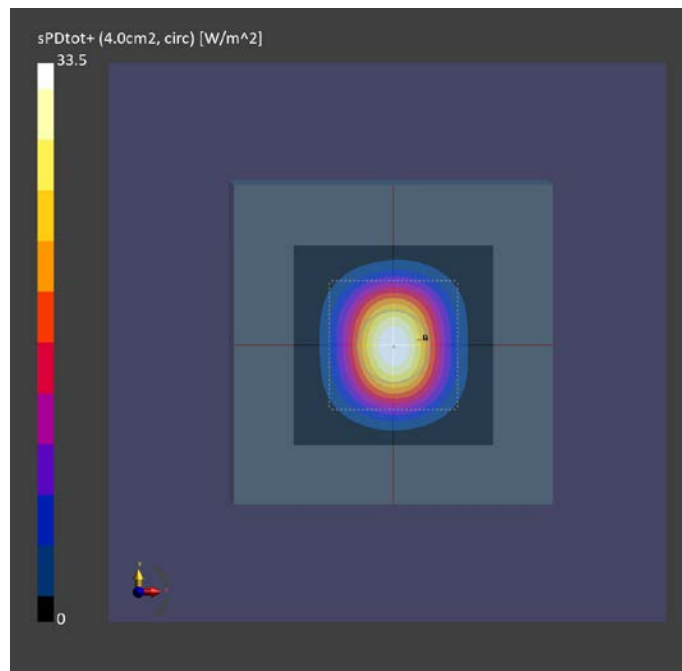
Probe, Calibration Date	DAE, Calibration Date	Software	Software Version
EUmmWV4 - SN9622, 2023-02-15	DAE4ip - SN1639, 2022-11-16	cDASY6 Module mmWave	3.2.0.1840

Scans Setup

Scan Type	5G Scan
Grid Extents [mm]	60.0 x 60.0
Grid Steps [lambda]	0.25 x 0.25
Sensor Surface [mm]	5.55

Measurement Results

Scan Type	5G Scan
Avg. Area [cm ²]	4.00
pS _{tot} avg [W/m ²]	33.5
pS _n avg [W/m ²]	33.1
E _{peak} [V/m]	131
Deviation [dB] pS _{tot}	0.10
Deviation [dB] pS _n	0.05



Date: 2023-10-11

30 GHz System Verification

Device Under Test Properties

DUT	Serial Number
30 GHz Verification Source	1035

Exposure Conditions

Phantom Section	Position	Test Distance [mm]	Band	Frequency [MHz]
5G	FRONT	5.55	CW	30000.0

Hardware/Software Setup

Probe, Calibration Date	DAE, Calibration Date	Software	Software Version
EUmmWV4 - SN9622, 2023-02-15	DAE4ip - SN1639, 2022-11-16	cDASY6 Module mmWave	3.2.0.1840

Scans Setup

Scan Type	5G Scan
Grid Extents [mm]	60.0 x 60.0
Grid Steps [lambda]	0.25 x 0.25
Sensor Surface [mm]	5.55

Measurement Results

Scan Type	5G Scan
Avg. Area [cm ²]	4.00
pS _{tot} avg [W/m ²]	34.0
pS _n avg [W/m ²]	33.6
E _{peak} [V/m]	130
Deviation [dB] pS _{tot}	0.17
Deviation [dB] pS _n	0.12

