

APPENDIX A: POWER DENSITY TEST PLOTS

Date: 2023-10-11

Antenna M Beam 284

Device Under Test Properties

DUT	Serial Number	DUT Type
A3LSMS928U	WHV0054M	Portable Handset

Exposure Conditions

Phantom Section	Position	Test Distance [mm]	Band	Frequency [MHz]
5G	BACK	2.00	CW	25200.0

Hardware/Software Setup

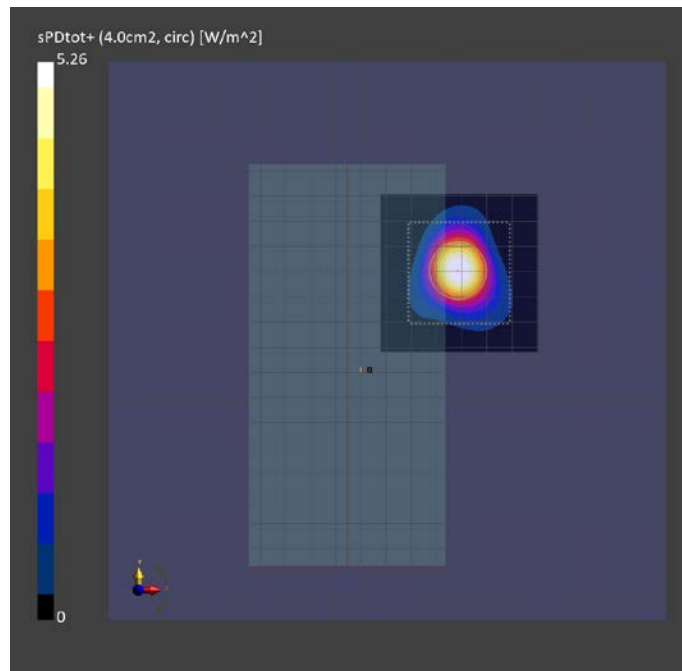
Probe, Calibration Date	DAE, Calibration Date	Software	Software Version
EUmmWV4 - SN9622, 2023-02-15	DAE4ip - SN1639, 2022-11-16	cDASY6 Module mmWave	3.2.0.1840

Scans Setup

Scan Type	5G Scan
Grid Extents [mm]	60.0 x 60.0
Grid Steps [lambda]	0.25 x 0.25
Sensor Surface [mm]	2.0

Measurement Results

Scan Type	5G Scan
Avg. Area [cm ²]	4.00
pS _{tot} avg [W/m ²]	5.26
pS _n avg [W/m ²]	3.09
E _{peak} [V/m]	77.7
Power Drift [dB]	-0.01



Date: 2023-09-25

Antenna N Beam 286

Device Under Test Properties

DUT	Serial Number	DUT Type
A3LSMS928U	WHV0054M	Portable Handset

Exposure Conditions

Phantom Section	Position	Test Distance [mm]	Band	Frequency [MHz]
5G	EDGE RIGHT	2.00	CW	25200.0

Hardware/Software Setup

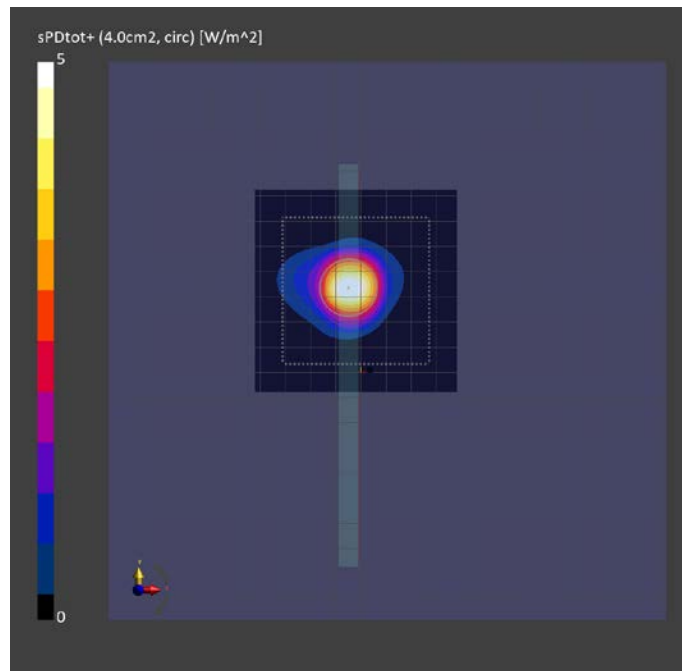
Probe, Calibration Date	DAE, Calibration Date	Software	Software Version
EUmmWV4 - SN9622, 2023-02-15	DAE4ip - SN1639, 2022-11-16	cDASY6 Module mmWave	3.2.0.1840

Scans Setup

Scan Type	5G Scan
Grid Extents [mm]	80.0 x 80.0
Grid Steps [lambda]	0.25 x 0.25
Sensor Surface [mm]	2.0

Measurement Results

Scan Type	5G Scan
Avg. Area [cm ²]	4.00
pS _{tot} avg [W/m ²]	5.00
pS _n avg [W/m ²]	4.29
E _{peak} [V/m]	80.6
Power Drift [dB]	-0.13



Date: 2023-10-11

Antenna M Beam 26

Device Under Test Properties

DUT	Serial Number	DUT Type
A3LSMS928U	WHV0054M	Portable Handset

Exposure Conditions

Phantom Section	Position	Test Distance [mm]	Band	Frequency [MHz]
5G	BACK	2.00	CW	27925.0

Hardware/Software Setup

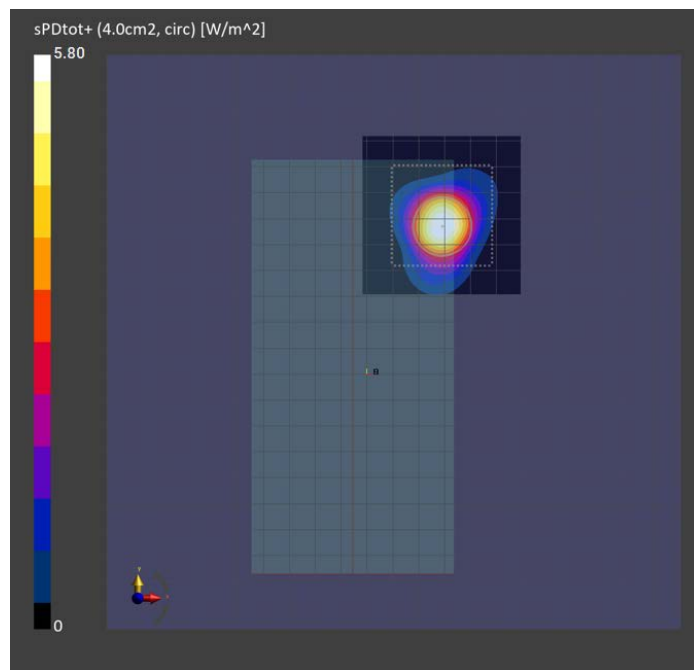
Probe, Calibration Date	DAE, Calibration Date	Software	Software Version
EUmmWV4 - SN9622, 2023-02-15	DAE4ip - SN1639, 2022-11-16	cDASY6 Module mmWave	3.2.0.1840

Scans Setup

Scan Type	5G Scan
Grid Extents [mm]	60.0 x 60.0
Grid Steps [lambda]	0.25 x 0.25
Sensor Surface [mm]	2.0

Measurement Results

Scan Type	5G Scan
Avg. Area [cm ²]	4.00
pS _{tot} avg [W/m ²]	5.80
pS _n avg [W/m ²]	5.11
E _{peak} [V/m]	81.5
Power Drift [dB]	-0.10



Date: 2023-09-25

Antenna N Beam 296

Device Under Test Properties

DUT	Serial Number	DUT Type
A3LSMS928U	WHV0054M	Portable Handset

Exposure Conditions

Phantom Section	Position	Test Distance [mm]	Band	Frequency [MHz]
5G	EDGE RIGHT	2.00	CW	28300.0

Hardware/Software Setup

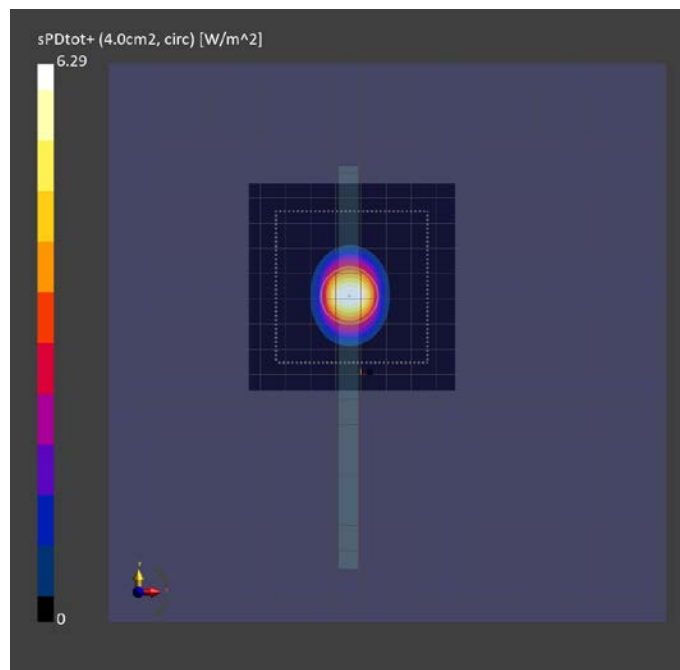
Probe, Calibration Date	DAE, Calibration Date	Software	Software Version
EUmmWV4 - SN9622, 2023-02-15	DAE4ip - SN1639, 2022-11-16	cDASY6 Module mmWave	3.2.0.1840

Scans Setup

Scan Type	5G Scan
Grid Extents [mm]	80.0 x 80.0
Grid Steps [lambda]	0.25 x 0.25
Sensor Surface [mm]	2.0

Measurement Results

Scan Type	5G Scan
Avg. Area [cm ²]	4.00
pS _{tot} avg [W/m ²]	6.29
pS _n avg [W/m ²]	5.89
E _{peak} [V/m]	101
Power Drift [dB]	-0.03



Date: 2023-10-11

Antenna M Beam 282

Device Under Test Properties

DUT	Serial Number	DUT Type
A3LSMS928U	WHV0054M	Portable Handset

Exposure Conditions

Phantom Section	Position	Test Distance [mm]	Band	Frequency [MHz]
5G	BACK	2.00	CW	38500.0

Hardware/Software Setup

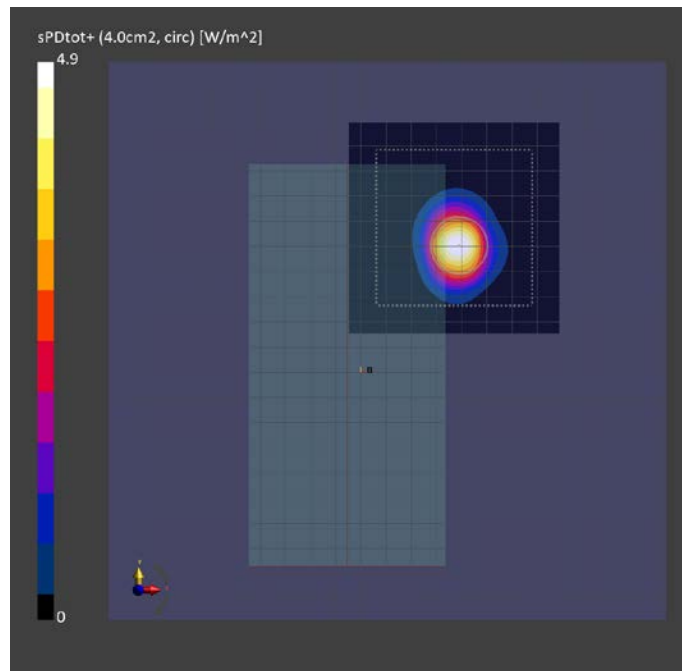
Probe, Calibration Date	DAE, Calibration Date	Software	Software Version
EUmmWV4 - SN9622, 2023-02-15	DAE4ip - SN1639, 2022-11-16	cDASY6 Module mmWave	3.2.0.1840

Scans Setup

Scan Type	5G Scan
Grid Extents [mm]	80.0 x 80.0
Grid Steps [lambda]	0.25 x 0.25
Sensor Surface [mm]	2.0

Measurement Results

Scan Type	5G Scan
Avg. Area [cm ²]	4.00
pS _{tot} avg [W/m ²]	4.90
pS _n avg [W/m ²]	4.27
E _{peak} [V/m]	78.5
Power Drift [dB]	0.02



Date: 2023-09-22

Antenna N Beam 33

Device Under Test Properties

DUT	Serial Number	DUT Type
A3LSMS928U	WHV0054M	Portable Handset

Exposure Conditions

Phantom Section	Position	Test Distance [mm]	Band	Frequency [MHz]
5G	EDGE RIGHT	2.00	CW	38500.0

Hardware/Software Setup

Probe, Calibration Date	DAE, Calibration Date	Software	Software Version
EUmmWV4 - SN9622, 2023-02-15	DAE4ip - SN1639, 2022-11-16	cDASY6 Module mmWave	3.2.0.1840

Scans Setup

Scan Type	5G Scan
Grid Extents [mm]	100.0 x 100.0
Grid Steps [lambda]	0.25 x 0.25
Sensor Surface [mm]	2.0

Measurement Results

Scan Type	5G Scan
Avg. Area [cm ²]	4.00
pS _{tot} avg [W/m ²]	6.20
pS _n avg [W/m ²]	4.36
E _{peak} [V/m]	95.6
Power Drift [dB]	-0.06

