

ELEMENT MATERIALS TECHNOLOGY

(formerly PCTEST)
7185 Oakland Mills Road, Columbia, MD 21046 USA
Tel. +1.410.290.6652 / Fax +1.410.290.6654
<http://www.element.com>



PART 0 SAR CHAR REPORT

Applicant Name:

Samsung Electronics Co., Ltd.
129, Samsung-ro, Maetan dong,
Yeongtong-gu, Suwon-si
Gyeonggi-do, 16677, Korea

Date of Testing:

12/22/2023-02/01/2024

Test Site/Location:

Element, Columbia, MD, USA

Document Serial No.:

1M2312110124-05.A3L(R1)

FCC ID:

A3LSMS928JPN

APPLICANT:

SAMSUNG ELECTRONICS CO., LTD

Report Type:

Part 0 SAR Characterization

DUT Type:

Portable Handset

Model(s):

SC-52E, SCG26

Note: This revised test report supersedes and replaces the previously issued test report on the same subject device for the same type of testing as indicated.

Please discard or destroy the previously issued test report(s) and dispose of it accordingly
I attest to the accuracy of data. All measurements reported herein were performed by me or were made under my supervision and are correct to the best of my knowledge and belief. I assume full responsibility for the completeness of these measurements and vouch for the qualifications of all persons taking them.

Test results reported herein relate only to the item(s) tested.

RJ Ortanez
Executive Vice President



FCC ID: A3LSMS928JPN	PART 0 SAR CHAR REPORT	Approved by: Technical Manager
Document S/N: 1M2311010111-22.A3L(R1)	DUT Type: Portable Handset	APPENDIX A: Page 1 of 12

REV 1.1
04/08/2022

TABLE OF CONTENTS

1	DEVICE UNDER TEST	3
1.1	Device Overview	3
1.2	Time-Averaging for SAR	3
1.3	Nomenclature for Part 0 Report	4
1.4	Bibliography	4
2	SAR AND POWER DENSITY MEASUREMENTS	5
2.1	SAR Definition	5
2.2	SAR Measurement Procedure	5
3	SAR CHARACTERIZATION	7
3.1	DSI and SAR Determination	7
3.2	SAR Design Target	7
3.3	SAR Char	8
4	EQUIPMENT LIST	10
5	MEASUREMENT UNCERTAINTIES	11
APPENDIX A: SAR TEST RESULTS FOR PLimit CALCULATIONS		

FCC ID: A3LSMS928JPN	PART 0 SAR CHAR REPORT	Approved by: Technical Manager
Document S/N: 1M2311010111-22.A3L(R1)	DUT Type: Portable Handset	APPENDIX A: Page 2 of 12

REV 1.1
04/08/2022

1 DEVICE UNDER TEST

1.1 Device Overview

This device uses the Qualcomm® Smart Transmit Gen2 feature to control and manage transmitting power in real time and to ensure the time-averaged RF exposure is in compliance with the FCC requirement at all times for 2G/3G/4G/5G WWAN and WLAN/BT operations. Additionally, this device supports NFC technologies, but the output power of these modems is not controlled by the Smart Transmit algorithm.

Band & Mode	Operating Modes	Tx Frequency
GSM/GPRS/EDGE 850	Voice/Data	824.20 - 848.80 MHz
GSM/GPRS/EDGE1900	Voice/Data	1850.20 - 1909.80 MHz
UMTS 850	Voice/Data	826.40 - 846.60 MHz
LTE Band 12	Data	699.7 - 715.3 MHz
LTE Band 13	Data	779.5 - 784.5 MHz
LTE Band 5	Data	824.7 - 848.3 MHz
LTE Band 66	Data	1710.7 - 1779.3 MHz
LTE Band 4	Data	1710.7 - 1754.3 MHz
LTE Band 2	Data	1850.7 - 1909.3 MHz
LTE Band 41	Data	2498.5 - 2687.5 MHz
NR Band n5	Data	826.5 - 846.5 MHz
NR Band n66	Data	1712.5 - 1777.5 MHz
NR Band n41	Data	2501.01 - 2685 MHz
2.4 GHz WIFI	Data	2412 - 2462 MHz
5 GHz WIFI	Data	U-NII-1: 5180 - 5240 MHz U-NII-2A: 5260 - 5320 MHz U-NII-2C: 5500 - 5720 MHz U-NII-3: 5745 - 5825 MHz U-NII-4: 5845 - 5885 MHz
6 GHz WIFI	Data	U-NII-5: 5945 - 6415 MHz U-NII-6: 6435 - 6515 MHz U-NII-7: 6535 - 6875 MHz U-NII-8: 6895 - 7115 MHz
2.4 GHz Bluetooth	Data	2402 - 2480 MHz
NFC	Data	13.56 MHz
UWB	Data	6489.6 - 7987.2 MHz

1.2 Time-Averaging for SAR

This device is enabled with Qualcomm® Gen2 Smart Transmit algorithm to control and manage transmitting power in real time and to ensure that the time-averaged RF exposure from 2G/3G/4G/5G Sub-6 NR WWAN and WLAN/BT are in compliance with FCC requirements. This Part 0 report shows SAR characterization of WWAN radios for 2G/3G/4G/5G Sub-6 NR, WLAN, and Bluetooth. Characterization is achieved by determining PLimit for 2G/3G/4G/5G Sub-6 NR, WLAN, and Bluetooth that corresponds to the exposure design targets after accounting for all device design related uncertainties, i.e., SAR_design_target (< FCC SAR limit) for sub-6 radio. The SAR characterization is denoted as SAR Char in this report. Section 1.3 includes a nomenclature of the specific terms used in this report.

The compliance test under the static transmission scenario and simultaneous transmission analysis are reported in Part 1 report. The validation of the time-averaging algorithm and compliance under the dynamic (time- varying)

FCC ID: A3LSMS928JPN	PART 0 SAR CHAR REPORT	Approved by: Technical Manager
Document S/N: 1M2311010111-22.A3L(R1)	DUT Type: Portable Handset	APPENDIX A: Page 3 of 12

REV 1.1
04/08/2022

transmission scenario for WWAN technologies are reported in Part 2 report (report SN could be found in Section 1.4 – Bibliography).

1.3 Nomenclature for Part 0 Report

Technology	Term	Description
2G/3G/4G/5G Sub-6 NR /WLAN/BT	P_{limit}	Power level that corresponds to the exposure design target (SAR_{design_target}) after accounting for all device design related uncertainties
	P_{max}	Maximum tune up output power
	SAR_{design_target}	Target SAR level < FCC SAR limit after accounting for all device design related uncertainties
	SAR_{Char}	Table containing P_{limit} for all technologies and bands

1.4 Bibliography

Report Type	Report Serial Number
RF Exposure Part 2 Test Report	1M2312110124-02.A3L
RF Exposure Compliance Summary Report	1M2312110124-03.A3L
RF Exposure Part 1 Test Report	1M2312110124-01.A3L

FCC ID: A3LSMS928JPN	PART 0 SAR CHAR REPORT	Approved by: Technical Manager
Document S/N: 1M2311010111-22.A3L(R1)	DUT Type: Portable Handset	APPENDIX A: Page 4 of 12

REV 1.1
04/08/2022

2.1 SAR Definition

Specific Absorption Rate is defined as the time derivative (rate) of the incremental energy (dU) absorbed by (dissipated in) an incremental mass (dm) contained in a volume element (dV) of a given density (ρ). It is also defined as the rate of RF energy absorption per unit mass at a point in an absorbing body (see Equation 2-1).

Equation 2-1
SAR Mathematical Equation

$$SAR = \frac{d}{dt} \left(\frac{dU}{dm} \right) = \frac{d}{dt} \left(\frac{dU}{\rho dv} \right)$$

SAR is expressed in units of Watts per Kilogram (W/kg).

$$SAR = \frac{\sigma \cdot E^2}{\rho}$$

where:

σ	=	conductivity of the tissue-simulating material (S/m)
ρ	=	mass density of the tissue-simulating material (kg/m ³)
E	=	Total RMS electric field strength (V/m)

NOTE: The primary factors that control rate of energy absorption were found to be the wavelength of the incident field in relation to the dimensions and geometry of the irradiated organism, the orientation of the organism in relation to the polarity of field vectors, the presence of reflecting surfaces, and whether conductive contact is made by the organism with a ground plane.[6]

2.2 SAR Measurement Procedure

The evaluation was performed using the following procedure compliant to FCC KDB Publication 865664 D01v01r04 and IEEE 1528-2013:

1. The SAR distribution at the exposed side of the head or body was measured at a distance no greater than 5.0 mm from the inner surface of the shell. The area covered the entire dimension of the device-head and body interface and the horizontal grid resolution was determined per FCC KDB Publication 865664 D01v01r04 (See Table 2-1) and IEEE 1528-2013.
2. The point SAR measurement was taken at the maximum SAR region determined from Step 1 to enable the monitoring of SAR fluctuations/drifts during the 1g/10g cube evaluation. SAR at this fixed point was measured and used as a reference value.
3. Based on the area scan data, the peak of the region with maximum SAR was determined by spline interpolation. Around this point, a volume was assessed according to the measurement resolution and volume size requirements of FCC KDB Publication 865664 D01v01r04 (See Table 2-1) and IEEE 1528-2013. On the

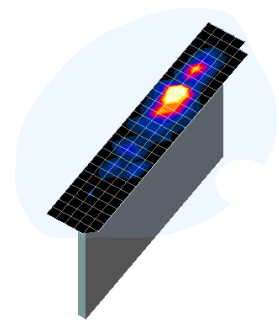


Figure 2-1
Sample SAR Area Scan

FCC ID: A3LSMS928JPN	PART 0 SAR CHAR REPORT	Approved by: Technical Manager
Document S/N: 1M2311010111-22.A3L(R1)	DUT Type: Portable Handset	APPENDIX A: Page 5 of 12

REV 1.1
04/08/2022

basis of this data set, the spatial peak SAR value was evaluated with the following procedure (see references or the DASY manual online for more details):

- a. SAR values at the inner surface of the phantom are extrapolated from the measured values along the line away from the surface with spacing no greater than that in Table 2-1. The extrapolation was based on a least-squares algorithm. A polynomial of the fourth order was calculated through the points in the z-axis (normal to the phantom shell).
- b. After the maximum interpolated values were calculated between the points in the cube, the SAR was averaged over the spatial volume (1g or 10g) using a 3D-Spline interpolation algorithm. The 3D-spline is composed of three one-dimensional splines with the “Not a knot” condition (in x, y, and z directions). The volume was then integrated with the trapezoidal algorithm. One thousand points (10 x 10 x 10) were obtained through interpolation, in order to calculate the averaged SAR.
- c. All neighboring volumes were evaluated until no neighboring volume with a higher average value was found.

4. The SAR reference value, at the same location as step 2, was re-measured after the zoom scan was complete to calculate the SAR drift. If the drift deviated by more than 5%, the SAR test and drift measurements were repeated.

**Table 2-1
Area and Zoom Scan Resolutions per FCC KDB Publication 865664 D01v01r04***

Frequency	Maximum Area Scan Resolution (mm) ($\Delta x_{\text{area}}, \Delta y_{\text{area}}$)	Maximum Zoom Scan Resolution (mm) ($\Delta x_{\text{zoom}}, \Delta y_{\text{zoom}}$)	Maximum Zoom Scan Spatial Resolution (mm)			Minimum Zoom Scan Volume (mm) (x,y,z)
			Uniform Grid	Graded Grid		
			$\Delta z_{\text{zoom}}(n)$	$\Delta z_{\text{zoom}}(1)^*$	$\Delta z_{\text{zoom}}(n>1)^*$	
≤ 2 GHz	≤ 15	≤ 8	≤ 5	≤ 4	≤ 1.5* $\Delta z_{\text{zoom}}(n-1)$	≥ 30
2-3 GHz	≤ 12	≤ 5	≤ 5	≤ 4	≤ 1.5* $\Delta z_{\text{zoom}}(n-1)$	≥ 30
3-4 GHz	≤ 12	≤ 5	≤ 4	≤ 3	≤ 1.5* $\Delta z_{\text{zoom}}(n-1)$	≥ 28
4-5 GHz	≤ 10	≤ 4	≤ 3	≤ 2.5	≤ 1.5* $\Delta z_{\text{zoom}}(n-1)$	≥ 25
5-6 GHz	≤ 10	≤ 4	≤ 2	≤ 2	≤ 1.5* $\Delta z_{\text{zoom}}(n-1)$	≥ 22

*Also compliant to IEEE 1528-2013 Table 6

FCC ID: A3LSMS928JPN	PART 0 SAR CHAR REPORT	Approved by: Technical Manager
Document S/N: 1M2311010111-22.A3L(R1)	DUT Type: Portable Handset	APPENDIX A: Page 6 of 12

REV 1.1
04/08/2022

3 SAR CHARACTERIZATION

3.1 DSI and SAR Determination

This device uses different Device State Index (DSI) to configure different time averaged power levels based on certain exposure scenarios. Depending on the detection scheme implemented in the smartphone, the worst-case SAR was determined by measurements for the relevant exposure conditions for that DSI. Detailed descriptions of the detection mechanisms are included in the operational description.

When 1g SAR and 10g SAR exposure comparison is needed, the worst-case was determined from SAR normalized to 1g or 10g SAR limit.

The device state index (DSI) conditions used in Table 2-1 represent different exposure scenarios.

**Table 3-1
DSI and Corresponding Exposure Scenarios**

Scenario	Description	SAR Test Cases
Head (DSI = 1)	Device positioned next to head Receiver Active	Head SAR per KDB Publication 648474 D04
Hotspot mode (DSI = 0)	Device transmits in hotspot mode near body Hotspot Mode Active	Hotspot SAR per KDB Publication 941225 D06
Phablet (DSI = 0)	Device is held with hand	Phablet SAR per KDB Publication 648474 D04 & KDB Publication 616217 D04
Body-worn (DSI = 0)	Device being used with a body-worn accessory	Body-worn SAR per KDB Publication 648474 D04

3.2 SAR Design Target

SAR_{design_target} is determined by ensuring that it is less than FCC SAR limit after accounting for total device designed related uncertainties specified by the manufacturer (see Table 3-2).

**Table 3-2
 SAR_{design_target} Calculations**

SAR_{design_target}			
$SAR_{design_target} < SAR_{regulatory_limit} \times 10^{\frac{-Total\ Uncertainty}{10}}$			
1g SAR (W/kg)		10g SAR (W/kg)	
<i>Total Uncertainty</i>	1.0 dB	<i>Total Uncertainty</i>	1.0 dB
<i>SAR_regulatory_limit</i>	1.6 W/kg	<i>SAR_regulatory_limit</i>	4.0 W/kg
<i>SAR_design_target</i>	0.8 W/kg	<i>SAR_design_target</i>	2.0 W/kg

FCC ID: A3LSMS928JPN	PART 0 SAR CHAR REPORT	Approved by: Technical Manager
Document S/N: 1M2311010111-22.A3L(R1)	DUT Type: Portable Handset	APPENDIX A: Page 7 of 12

REV 1.1
04/08/2022

3.3 SAR Char

SAR test results corresponding to P_{max} for each antenna/technology/band/DSI can be found in Appendix A.

P_{limit} is calculated by linearly scaling with the measured SAR at the P_{part0} to correspond to the SAR_{design_target} . When $P_{limit} < P_{max}$, P_{part0} was used as P_{limit} in the Smart Transmit EFS. When $P_{limit} > P_{max}$ and $P_{part0}=P_{max}$, calculated P_{limit} was used in the Smart Transmit EFS. All reported SAR obtained from the P_{part0} SAR tests was less than $SAR_{Design_target} + 1$ dB Uncertainty. The final P_{limit} determination for each exposure scenario corresponding to SAR_{design_target} are shown in Table 3-3.

**Table 3-3
 P_{Limit} Determination**

Device State Index (DSI)	P_{Limit} Determination Scenarios
0	The worst-case SAR exposure is determined as maximum SAR normalized to the limit (i.e. lowest P_{limit}) among: 1. Body Worn SAR 2. Extremity SAR measured at 0 mm for all surfaces. 3. Hotspot SAR at 10 mm
1	P_{limit} is calculated based on 1g Head SAR

FCC ID: A3LSMS928JPN	PART 0 SAR CHAR REPORT	Approved by: Technical Manager
Document S/N: 1M2311010111-22.A3L(R1)	DUT Type: Portable Handset	APPENDIX A: Page 8 of 12

REV 1.1
04/08/2022

**Table 3-4
SAR Characterizations**

Exposure Scenario			Maximum Tune-Up Output Power*	Body-Worn, Hotspot, or Phablet	Head
Averaging Volume				1g/10g	1g
Spacing				10mm, 0mm	0mm
DSI				0	1
Technology/Band	Antenna	Antenna Group	Pmax		
GSM 850	A	AG0	25.1	26.1	29.6
GSM 850	E	AG1	24.6	26.9	21.8
GSM 1900	A	AG0	21.8	18.8	30.5
UMTS 850	A	AG0	24.0	24.2	27.7
UMTS 850	E	AG1	23.5	25.7	21.5
LTE Band 12	A	AG0	23.0	26.8	28.9
LTE Band 12	E	AG1	22.5	26.1	22.0
LTE Band 13	A	AG0	23.0	24.6	27.6
LTE Band 13	E	AG1	22.5	26.8	22.5
LTE Band 5	A	AG0	24.0	24.9	28.2
LTE Band 5	E	AG1	23.5	26.4	21.0
LTE Band 66/4	A	AG0	23.0	18.5	29.5
LTE Band 2	A	AG0	23.0	18.0	29.5
LTE Band 41 PC3	B	AG0	22.0	19.0	27.7
LTE Band 41 PC3	F	AG1	22.0	19.5	16.5
NR Band n5	A	AG0	24.0	24.6	27.5
NR Band n5	E	AG1	23.5	25.9	21.0
NR Band n66	A	AG0	23.0	18.5	28.7
NR Band n66	F	AG1	23.0	20.5	18.5
NR Band n41 PC3	B	AG0	24.0	19.5	21.0
NR Band n41 PC3	F	AG1	24.0	19.0	16.5
2.4 GHz WIFI	H	AG1	17.0	21.4	16.0
2.4 GHz WIFI	J	AG1	17.0	23.5	16.0
2.4 GHz WIFI	MIMO	AG1	17.0	19.5	16.0
5 GHz WIFI	H	AG1	17.0	17.0	15.0
5 GHz WIFI	E	AG1	17.0	20.5	15.0
5 GHz WIFI	MIMO	AG1	17.0	17.1	15.0
6 GHz WIFI	H	AG1	16.0	11.0	11.0
6 GHz WIFI	E	AG1	16.0	11.0	11.0
6 GHz WIFI	MIMO	AG1	16.0	11.0	11.0
2.4 GHz Bluetooth	H	AG1	15.9	23.9	22.3
2.4 GHz Bluetooth	J	AG1	15.0	31.0	25.9
2.4 GHz Bluetooth	MIMO	AG1	11.0	21.5	21.1

FCC ID: A3LSMS928JPN	PART 0 SAR CHAR REPORT	Approved by: Technical Manager
Document S/N: 1M2311010111-22.A3L(R1)	DUT Type: Portable Handset	APPENDIX A: Page 9 of 12

4

EQUIPMENT LIST

For SAR measurements

Manufacturer	Model	Description	Cal Date	Cal Interval	Cal Due	Serial Number
Agilent	E4404B	Spectrum Analyzer	N/A	N/A	N/A	MY45113282
Agilent	E4439C	ESG Vector Signal Generator	11/14/2023	Annual	11/14/2024	MY45093852
Agilent	E4439C	ESG Vector Signal Generator	11/15/2023	Annual	11/15/2024	MY45092078
Agilent	N5182A	MXG Vector Signal Generator	10/12/2023	Annual	10/12/2024	MY47400015
Agilent	N5182A	MXG Vector Signal Generator	7/4/2023	Annual	7/4/2024	MY48180366
Agilent	8753ES	S-Parameter Vector Network Analyzer	6/2/2023	Annual	6/2/2024	MY40003841
Agilent	8753ES	S-Parameter Vector Network Analyzer	2/8/2023	Annual	2/8/2024	US39170122
Agilent	E5515C	Wireless Communications Test Set	CBT	N/A	CBT	US41140256
Agilent	E5515C	Wireless Communications Test Set	1/12/2023	Annual	1/12/2024	MY50262130
Agilent	N4010A	Wireless Connectivity Test Set	N/A	N/A	N/A	GB46170464
Amplifier Research	1551G6	Amplifier	CBT	N/A	CBT	433973
Amplifier Research	1551G6	Amplifier	CBT	N/A	CBT	433974
Amplifier Research	150A100C	Amplifier	CBT	N/A	CBT	350132
Anritsu	MN8110B	I/O Adaptor	CBT	N/A	CBT	6261747881
Anritsu	ML2495A	Power Meter	6/15/2023	Annual	6/15/2024	1138001
Anritsu	ML2495A	Power Meter	6/13/2023	Annual	6/13/2024	1039008
Anritsu	MA2411B	Pulse Power Sensor	8/22/2023	Annual	8/22/2024	1726262
Anritsu	MA2411B	Pulse Power Sensor	11/8/2023	Annual	11/8/2024	1027293
Anritsu	MT8821C	Radio Communication Analyzer MT8821C	12/15/2023	Annual	12/15/2024	6200901190
Anritsu	MT8821C	Radio Communication Analyzer MT8821C	7/7/2023	Annual	7/7/2024	6262044715
Anritsu	MT8821C	Radio Communication Analyzer MT8821C	1/20/2023	Annual	1/20/2024	6201144119
Anritsu	MT8821C	Radio Communication Analyzer MT8821C	7/5/2023	Annual	7/5/2024	6262150000
Anritsu	MT8000A	Radio Communication Test Station	3/21/2023	Annual	3/21/2024	6261967983
Anritsu	MT8000A	Radio Communication Test Station	4/6/2023	Annual	4/6/2024	6272337439
Anritsu	MT8000A	Radio Communication Test Station	3/1/2023	Annual	3/1/2024	6272337419
Anritsu	MA24106A	USB Power Sensor	6/15/2023	Annual	6/15/2024	1827301
Anritsu	MA24106A	USB Power Sensor	12/4/2023	Annual	12/4/2024	1520501
Control Company	4352	Long Stem Thermometer	1/26/2023	Annual	1/26/2024	16058097
Control Company	4040	Therm./ Clock/ Humidity Monitor	1/17/2023	Annual	1/17/2024	160574418
Control Company	4040	Digital Thermometer	3/27/2023	Biennial	3/27/2025	230208036
Mitutoyo	500-196-30	CD-6" ASX 6inch Digital Caliper	2/16/2022	Triennial	2/16/2025	A20238413
Keysight Technologies	N6705B	DC Power Analyzer	5/5/2021	Triennial	5/5/2024	MYS3004059
Keysight Technologies	N9020A	MXA Signal Analyzer	4/6/2023	Annual	4/6/2024	MY48010233
Agilent	N9020A	MXA Signal Analyzer	4/26/2022	Biennial	4/26/2024	MY56470202
MCL	BW-N6W5+	6dB Attenuator	CBT	N/A	CBT	1139
Mini-Circuits	VLF-6000+	Low Pass Filter DC to 6000 MHz	CBT	N/A	CBT	N/A
Mini-Circuits	VLF-6000+	Low Pass Filter DC to 6000 MHz	7/5/2023	Annual	7/5/2024	31634
Mini-Circuits	BW-N20W5+	DC to 18 GHz Precision Fixed 20 dB Attenuator	CBT	N/A	CBT	N/A
Mini-Circuits	NLF-1200+	Low Pass Filter DC to 1000 MHz	CBT	N/A	CBT	N/A
Mini-Circuits	NLF-2950+	Low Pass Filter DC to 2700 MHz	CBT	N/A	CBT	N/A
Mini-Circuits	BW-N20W5	Power Attenuator	CBT	N/A	CBT	1226
Mini-Circuits	ZUDC10-83-5+	Directional Coupler	CBT	N/A	CBT	2050
Narda	4772-3	Attenuator (3dB)	CBT	N/A	CBT	9406
Narda	BW-S3W2	Attenuator (3dB)	CBT	N/A	CBT	120
Seekonk	NC-100	Torque Wrench	CBT	N/A	CBT	22217
Seekonk	NC-100	Torque Wrench	CBT	N/A	CBT	1262
Rohde & Schwarz	CMW500	Wideband Radio Communication Tester	7/4/2023	Annual	7/4/2024	166818
Rohde & Schwarz	CMW500	Wideband Radio Communication Tester	2/9/2023	Annual	2/9/2024	161617
Rohde & Schwarz	CMW500	Wideband Radio Communication Tester	7/17/2023	Annual	7/17/2024	171008
Rohde & Schwarz	CMW500	Wideband Radio Communication Tester	10/16/2023	Annual	10/16/2024	170999
SPEAG	DAK-3.5	Dielectric Assessment Kit	11/13/2023	Annual	11/13/2024	1277
SPEAG	DAK3-3.5	Portable Dielectric Assessment Kit	8/14/2023	Annual	8/14/2024	1041
SPEAG	MAIA	Modulation and Audio Interference Analyzer	N/A	N/A	N/A	1237
SPEAG	MAIA	Modulation and Audio Interference Analyzer	N/A	N/A	N/A	1331
SPEAG	MAIA	Modulation and Audio Interference Analyzer	N/A	N/A	N/A	1390
SPEAG	DAK-12	Dielectric Assessment Kit (4MHz - 3GHz)	3/13/2023	Annual	3/13/2024	1102
SPEAG	CLA-13	Confined Loop Antenna	9/12/2023	Annual	9/12/2024	1002
SPEAG	D750V3	750 MHz SAR Dipole	2/13/2023	Annual	2/13/2024	1046
SPEAG	D835V2	835 MHz SAR Dipole	3/14/2022	Biennial	3/14/2024	46047
SPEAG	D835V2	835 MHz SAR Dipole	4/13/2023	Annual	4/13/2024	46119
SPEAG	D835V2	835 MHz SAR Dipole	5/11/2023	Annual	5/11/2024	46180
SPEAG	D1750V2	1750 MHz SAR Dipole	4/19/2023	Annual	4/19/2024	1051
SPEAG	D1750V2	1750 MHz SAR Dipole	5/17/2023	Annual	5/17/2024	1092
SPEAG	D1750V2	1750 MHz SAR Dipole	10/20/2021	Triennial	10/20/2024	1150
SPEAG	D1900V2	1900 MHz SAR Dipole	5/12/2023	Annual	5/12/2024	58026
SPEAG	D1900V2	1900 MHz SAR Dipole	4/18/2023	Annual	4/18/2024	5d141
SPEAG	D2450V2	2450 MHz SAR Dipole	11/25/2021	Triennial	11/25/2024	981
SPEAG	D2600V2	2600 MHz SAR Dipole	4/14/2021	Triennial	4/14/2024	1004
SPEAG	D2600V2	2600 MHz SAR Dipole	8/10/2023	Annual	8/10/2024	1126
SPEAG	D5GHV2	5 GHz SAR Dipole	1/10/2022	Triennial	1/10/2025	1057
SPEAG	D6.5GHV2	6.5 GHz SAR Dipole	10/11/2023	Annual	10/11/2024	1019
SPEAG	DAE4	Dasy Data Acquisition Electronics	6/15/2023	Annual	6/15/2024	1334
SPEAG	DAE4	Dasy Data Acquisition Electronics	6/15/2023	Annual	6/15/2024	1532
SPEAG	DAE4	Dasy Data Acquisition Electronics	4/14/2023	Annual	4/14/2024	1407
SPEAG	DAE4	Dasy Data Acquisition Electronics	9/6/2023	Annual	9/6/2024	1364
SPEAG	DAE4	Dasy Data Acquisition Electronics	4/14/2023	Annual	4/14/2024	1368
SPEAG	DAE4	Dasy Data Acquisition Electronics	2/15/2023	Annual	2/15/2024	665
SPEAG	DAE4	Dasy Data Acquisition Electronics	2/16/2023	Annual	2/16/2024	1645
SPEAG	DAE4	Dasy Data Acquisition Electronics	10/18/2023	Annual	10/18/2024	1322
SPEAG	EX3DV4	SAR Probe	9/13/2023	Annual	9/13/2024	7558
SPEAG	EX3DV4	SAR Probe	6/15/2023	Annual	6/15/2024	7409
SPEAG	EX3DV4	SAR Probe	4/14/2023	Annual	4/14/2024	7659
SPEAG	EX3DV4	SAR Probe	4/18/2023	Annual	4/18/2024	7718
SPEAG	EX3DV4	SAR Probe	2/8/2023	Annual	2/8/2024	7417
SPEAG	EX3DV4	SAR Probe	6/8/2023	Annual	6/8/2024	7491
SPEAG	EX3DV4	SAR Probe	2/10/2023	Annual	2/10/2024	7640
SPEAG	EX3DV4	SAR Probe	10/23/2023	Annual	10/23/2024	7547

Note:

1. CBT (Calibrated Before Testing). Prior to testing, the measurement paths containing a cable, amplifier, attenuator, coupler or filter were connected to a calibrated source (i.e. a signal generator) to determine the losses of the measurement path. The power meter offset was then adjusted to compensate for the measurement system losses. This level offset is stored within the power meter before measurements are made. This calibration verification procedure applies to the system verification and output power measurements. The calibrated reading is then taken directly from the power meter after compensation of the losses for all final power measurements.
2. Each equipment item was used solely within its respective calibration period.

FCC ID: A3LSMS928JPN	PART 0 SAR CHAR REPORT	Approved by: Technical Manager
Document S/N: 1M2311010111-22.A3L(R1)	DUT Type: Portable Handset	APPENDIX A: Page 10 of 12

5 MEASUREMENT UNCERTAINTIES

Applicable for SAR measurements < 6GHz:

a	b	c	d	e= f(d,k)	f	g	h= c x f/e	i= c x g/e	k
Uncertainty Component	IEEE 1528 Sec.	ToL (± %)	Prob. Dist.	Div.	c _i 1 gm	c _i 10 gms	1 gm u _i (± %)	10 gms u _i (± %)	v _i
Measurement System									
Probe Calibration	E.2.1	7	N	1	1	1	7.0	7.0	∞
Axial Isotropy	E.2.2	0.25	N	1	0.7	0.7	0.2	0.2	∞
Hemishperical Isotropy	E.2.2	1.3	N	1	0.7	0.7	0.9	0.9	∞
Boundary Effect	E.2.3	2	R	1.732	1	1	1.2	1.2	∞
Linearity	E.2.4	0.3	N	1	1	1	0.3	0.3	∞
System Detection Limits	E.2.4	0.25	R	1.732	1	1	0.1	0.1	∞
Modulation Response	E.2.5	4.8	R	1.732	1	1	2.8	2.8	∞
Readout Electronics	E.2.6	0.3	N	1	1	1	0.3	0.3	∞
Response Time	E.2.7	0.8	R	1.732	1	1	0.5	0.5	∞
Integration Time	E.2.8	2.6	R	1.732	1	1	1.5	1.5	∞
RF Ambient Conditions - Noise	E.6.1	3	R	1.732	1	1	1.7	1.7	∞
RF Ambient Conditions - Reflections	E.6.1	3	R	1.732	1	1	1.7	1.7	∞
Probe Positioner Mechanical Tolerance	E.6.2	0.8	R	1.732	1	1	0.5	0.5	∞
Probe Positioning w/ respect to Phantom	E.6.3	6.7	R	1.732	1	1	3.9	3.9	∞
Extrapolation, Interpolation & Integration algorithms for Max. SAR Evaluation	E.5	4	R	1.732	1	1	2.3	2.3	∞
Test Sample Related									
Test Sample Positioning	E.4.2	3.12	N	1	1	1	3.1	3.1	35
Device Holder Uncertainty	E.4.1	1.67	N	1	1	1	1.7	1.7	5
Output Power Variation - SAR drift measurement	E.2.9	5	R	1.732	1	1	2.9	2.9	∞
SAR Scaling	E.6.5	0	R	1.732	1	1	0.0	0.0	∞
Phantom & Tissue Parameters									
Phantom Uncertainty (Shape & Thickness tolerances)	E.3.1	7.6	R	1.73	1.0	1.0	4.4	4.4	∞
Liquid Conductivity - measurement uncertainty	E.3.3	4.3	N	1	0.78	0.71	3.3	3.0	76
Liquid Permittivity - measurement uncertainty	E.3.3	4.2	N	1	0.23	0.26	1.0	1.1	75
Liquid Conductivity - Temperature Uncertainty	E.3.4	3.4	R	1.732	0.78	0.71	1.5	1.4	∞
Liquid Permittivity - Temperature Uncertainty	E.3.4	0.6	R	1.732	0.23	0.26	0.1	0.1	∞
Liquid Conductivity - deviation from target values	E.3.2	5.0	R	1.73	0.64	0.43	1.8	1.2	∞
Liquid Permittivity - deviation from target values	E.3.2	5.0	R	1.73	0.60	0.49	1.7	1.4	∞
Combined Standard Uncertainty (k=1)	RSS						12.2	12.0	191
Expanded Uncertainty (95% CONFIDENCE LEVEL)	k=2						24.4	24.0	

The above measurement uncertainties are according to IEEE Std. 1528-2013

FCC ID: A3LSMS928JPN	PART 0 SAR CHAR REPORT	Approved by: Technical Manager
Document S/N: 1M2311010111-22.A3L(R1)	DUT Type: Portable Handset	APPENDIX A: Page 11 of 12

REV 1.1
04/08/2022

Applicable for SAR measurements > 6GHz:

Uncertainty Component	IEEE 1528 Sec.	Tol. (± %)	Prob. Dist.	f(d,k) Div.	c _i 1gm	c _i 10 gms	c x f/e 1gm u _i (± %)	c x g/e 10gms u _i (± %)	v _i
Measurement System									
Probe Calibration	E.2.1	9.3	N	1	1	1	9.3	9.3	∞
Axial Isotropy	E.2.2	0.25	N	1	0.7	0.7	0.2	0.2	∞
Hemishperical Isotropy	E.2.2	1.3	N	1	0.7	0.7	0.9	0.9	∞
Boundary Effect	E.2.3	2	R	1.732	1	1	1.2	1.2	∞
Linearity	E.2.4	0.3	N	1	1	1	0.3	0.3	∞
System Detection Limits	E.2.4	0.25	R	1.732	1	1	0.1	0.1	∞
Modulation Response	E.2.5	4.8	R	1.732	1	1	2.8	2.8	∞
Readout Electronics	E.2.6	0.3	N	1	1	1	0.3	0.3	∞
Response Time	E.2.7	0.8	R	1.732	1	1	0.5	0.5	∞
Integration Time	E.2.8	2.6	R	1.732	1	1	1.5	1.5	∞
RF Ambient Conditions - Noise	E.6.1	3	R	1.732	1	1	1.7	1.7	∞
RF Ambient Conditions - Reflections	E.6.1	3	R	1.732	1	1	1.7	1.7	∞
Probe Positioner Mechanical Tolerance	E.6.2	0.8	R	1.732	1	1	0.5	0.5	∞
Probe Positioning w/ respect to Phantom	E.6.3	6.7	R	1.732	1	1	3.9	3.9	∞
Extrapolation, Interpolation & Integration algorithms for Max. SAR Evaluation	E.5	4	R	1.732	1	1	2.3	2.3	∞
Test Sample Related									
Test Sample Positioning	E.4.2	3.12	N	1	1	1	3.1	3.1	35
Device Holder Uncertainty	E.4.1	1.67	N	1	1	1	1.7	1.7	5
Output Power Variation - SAR drift measurement	E.2.9	5	R	1.732	1	1	2.9	2.9	∞
SAR Scaling	E.6.5	0	R	1.732	1	1	0.0	0.0	∞
Phantom & Tissue Parameters									
Phantom Uncertainty (Shape & Thickness tolerances)	E.3.1	7.6	R	1.73	1.0	1.0	4.4	4.4	∞
Liquid Conductivity - measurement uncertainty	E.3.3	4.3	N	1	0.78	0.71	3.3	3.0	76
Liquid Permittivity - measurement uncertainty	E.3.3	4.2	N	1	0.23	0.26	1.0	1.1	75
Liquid Conductivity - Temperature Uncertainty	E.3.4	3.4	R	1.732	0.78	0.71	1.5	1.4	∞
Liquid Permittivity - Temperature Uncertainty	E.3.4	0.6	R	1.732	0.23	0.26	0.1	0.1	∞
Liquid Conductivity - deviation from target values	E.3.2	5.0	R	1.73	0.64	0.43	1.8	1.2	∞
Liquid Permittivity - deviation from target values	E.3.2	5.0	R	1.73	0.60	0.49	1.7	1.4	∞
Combined Standard Uncertainty (k=1)	RSS						13.8	13.6	191
Expanded Uncertainty (95% CONFIDENCE LEVEL)	k=2						27.6	27.1	

The above measurement uncertainties are according to IEEE Std. 1528-2013

FCC ID: A3LSMS928JPN	PART 0 SAR CHAR REPORT	Approved by: Technical Manager
Document S/N: 1M2311010111-22.A3L(R1)	DUT Type: Portable Handset	APPENDIX A: Page 12 of 12

REV 1.1
04/08/2022