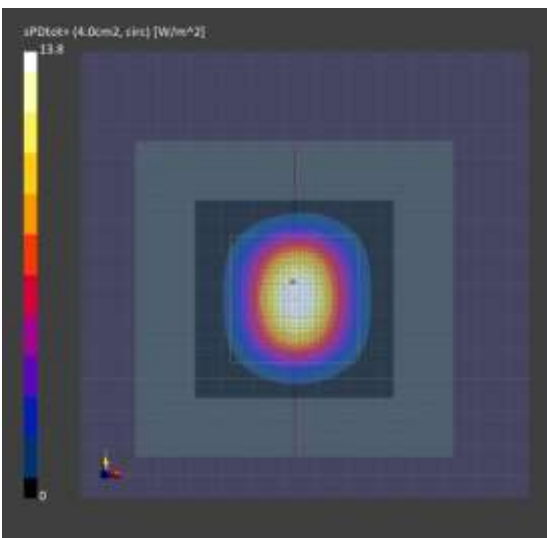


Appendix C. – Power Density System Check Plots

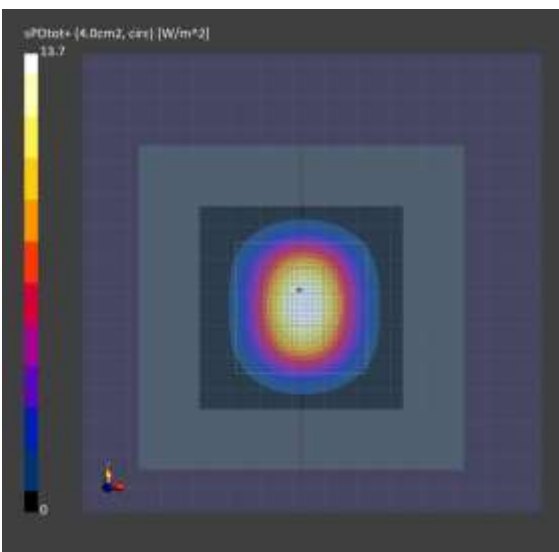
EUT Type: Mobile Phone
Room Temperature: 21.5°C
Test Date: 09/20/2023
Plot No.: V1

Model, Manufacturer	Dimensions [mm]
Device,	100.0 x 100.0 x 100.0
Exposure Conditions	
Phantom Section Position, Test Distance [mm]	Group, UID Frequency [MHz] Conversion Factor
5G FRONT, 5.55	CW, 0-- 30000.0, 30000 1.0
Hardware Setup	
Probe, Calibration Date	DAE, Calibration Date
EUmmWV3 - SN9486_F1-55GHz, 2023-06-19	DAE4 Sn780, 2023-07-04
Scans Setup	
Scan Type	5G Scan
Grid Extents [mm]	60.0 x 60.0
Grid Steps [lambda]	0.25 x 0.25
Sensor Surface [mm]	5.55
Measurement Results	
Scan Type	5G Scan
Avg. Area [cm2]	4.00
psPDn+ [W/m2]	13.6
psPDtot+ [W/m2]	13.8
psPDmod+ [W/m2]	13.8
E _{max} [V/m]	85.0
Power Drift [dB]	-0.02



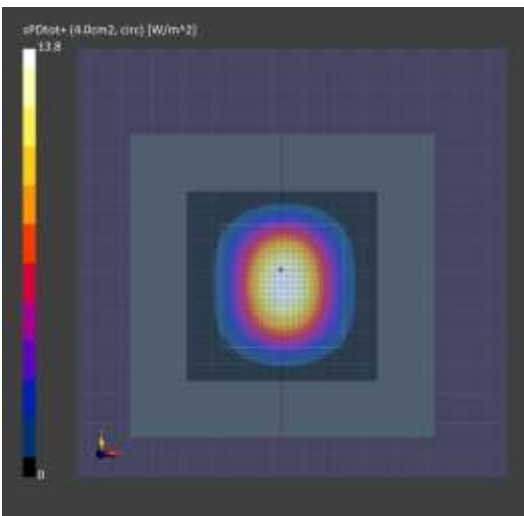
EUT Type: Mobile Phone
Room Temperature: 22.4°C
Test Date: 09/21/2023
Plot No.: V2

Model, Manufacturer	Dimensions [mm]
Device,	100.0 x 100.0 x 100.0
Exposure Conditions	
Phantom Section	Position, Test Distance [mm]
5G	FRONT, 5.55
Group, UID	Frequency [MHz] Conversion Factor
CW, 0--	30000.0, 30000 1.0
Hardware Setup	
Probe, Calibration Date	DAE, Calibration Date
EUmmWV3 - SN9486_F1-55GHz, 2023-06-19	DAE4 Sn780, 2023-07-04
Scans Setup	
Scan Type	5G Scan
Grid Extents [mm]	60.0 x 60.0
Grid Steps [lambda]	0.25 x 0.25
Sensor Surface [mm]	5.55
Measurement Results	
Scan Type	5G Scan
Avg. Area [cm2]	4.00
psPDn+ [W/m2]	13.6
psPDtot+ [W/m2]	13.7
psPDmod+ [W/m2]	13.8
E _{max} [V/m]	84.7
Power Drift [dB]	0.00



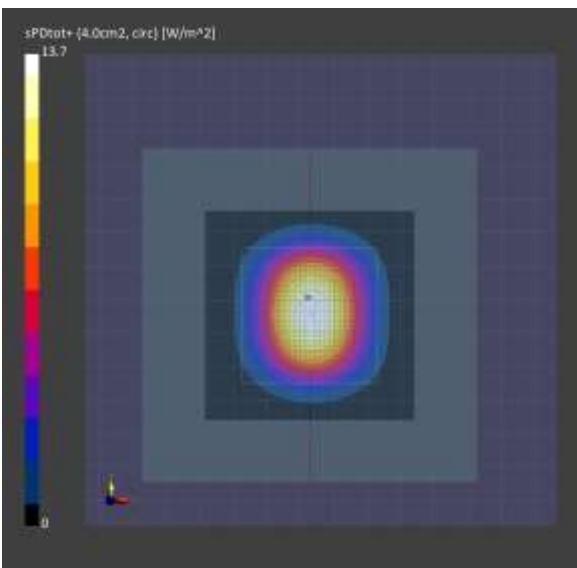
EUT Type: Mobile Phone
Room Temperature: 21.8°C
Test Date: 09/22/2023
Plot No.: V3

Model, Manufacturer	Dimensions [mm]
Device,	100.0 x 100.0 x 100.0
Exposure Conditions	
Phantom Section	Position, Test Distance [mm]
5G	FRONT, 5.55
	Group, UID Frequency [MHz] Conversion Factor
	CW, 0-- 30000.0, 30000 1.0
Hardware Setup	
Probe, Calibration Date	DAE, Calibration Date
EUmmWV3 - SN9486_F1-55GHz, 2023-06-19	DAE4 Sn780, 2023-07-04
Scans Setup	
Scan Type	5G Scan
Grid Extents [mm]	60.0 x 60.0
Grid Steps [lambda]	0.25 x 0.25
Sensor Surface [mm]	5.55
Measurement Results	
Scan Type	5G Scan
Avg. Area [cm2]	4.00
psPDn+ [W/m2]	13.6
psPDtot+ [W/m2]	13.8
psPDmod+ [W/m2]	13.8
E _{max} [V/m]	84.7
Power Drift [dB]	-0.03



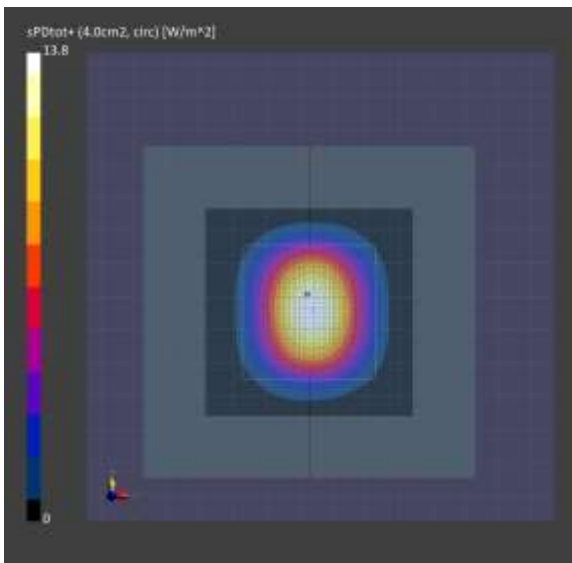
EUT Type: Mobile Phone
Room Temperature: 22.1°C
Test Date: 09/23/2023
Plot No.: V4

Model, Manufacturer	Dimensions [mm]
Device,	100.0 x 100.0 x 100.0
Exposure Conditions	
Phantom Section	Position, Test Distance [mm]
5G	FRONT, 5.55
Group, UID	Frequency [MHz]
CW, 0--	30000.0, 30000
Conversion Factor	1.0
Hardware Setup	
Probe, Calibration Date	DAE, Calibration Date
EUmmWV3 - SN9486_F1-55GHz, 2023-06-19	DAE4 Sn780, 2023-07-04
Scans Setup	
Scan Type	5G Scan
Grid Extents [mm]	60.0 x 60.0
Grid Steps [lambda]	0.25 x 0.25
Sensor Surface [mm]	5.55
Measurement Results	
Scan Type	5G Scan
Avg. Area [cm2]	4.00
psPDn+ [W/m2]	13.5
psPDtot+ [W/m2]	13.7
psPDmod+ [W/m2]	13.7
E _{max} [V/m]	84.8
Power Drift [dB]	-0.01



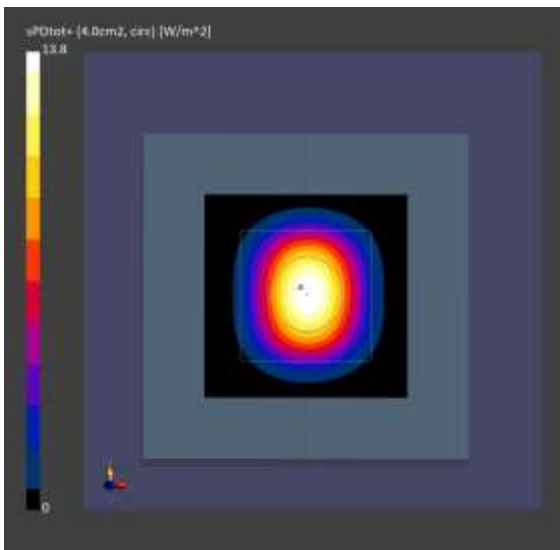
EUT Type: Mobile Phone
Room Temperature: 21.8°C
Test Date: 09/24/2023
Plot No.: V5

Model, Manufacturer	Dimensions [mm]
Device,	100.0 x 100.0 x 100.0
Exposure Conditions	
Phantom Section Position, Test Distance [mm]	Group, UID Frequency [MHz] Conversion Factor
5G FRONT, 5.55	CW, 0-- 30000.0, 30000 1.0
Hardware Setup	
Probe, Calibration Date	DAE, Calibration Date
EUmmWV3 - SN9486_F1-55GHz, 2023-06-19	DAE4 Sn780, 2023-07-04
Scans Setup	
Scan Type	5G Scan
Grid Extents [mm]	60.0 x 60.0
Grid Steps [lambda]	0.25 x 0.25
Sensor Surface [mm]	5.55
Measurement Results	
Scan Type	5G Scan
Avg. Area [cm2]	4.00
psPDn+ [W/m2]	13.7
psPDtot+ [W/m2]	13.8
psPDmod+ [W/m2]	13.9
E _{max} [V/m]	84.8
Power Drift [dB]	-0.02



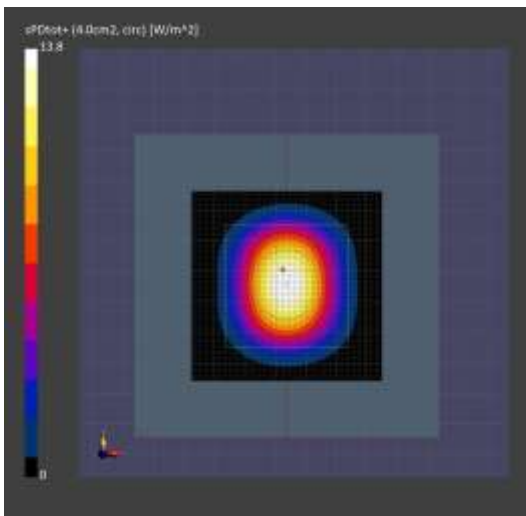
EUT Type: Mobile Phone
Room Temperature: 21.9°C
Test Date: 09/25/2023
Plot No.: V6

Model, Manufacturer	Dimensions [mm]
Device,	100.0 x 100.0 x 100.0
Exposure Conditions	
Phantom Section	Position, Test Distance [mm]
5G	FRONT, 5.55
	Group, UID Frequency [MHz] Conversion Factor
	CW, 0-- 30000.0, 30000 1.0
Hardware Setup	
Probe, Calibration Date	DAE, Calibration Date
EUmmWV3 - SN9486_F1-55GHz, 2023-06-19	DAE4 Sn780, 2023-07-04
Scans Setup	
Scan Type	5G Scan
Grid Extents [mm]	60.0 x 60.0
Grid Steps [lambda]	0.25 x 0.25
Sensor Surface [mm]	5.55
Measurement Results	
Scan Type	5G Scan
Avg. Area [cm2]	4.00
psPDn+ [W/m2]	13.6
psPDtot+ [W/m2]	13.8
psPDmod+ [W/m2]	13.8
E _{max} [V/m]	84.7
Power Drift [dB]	0.01



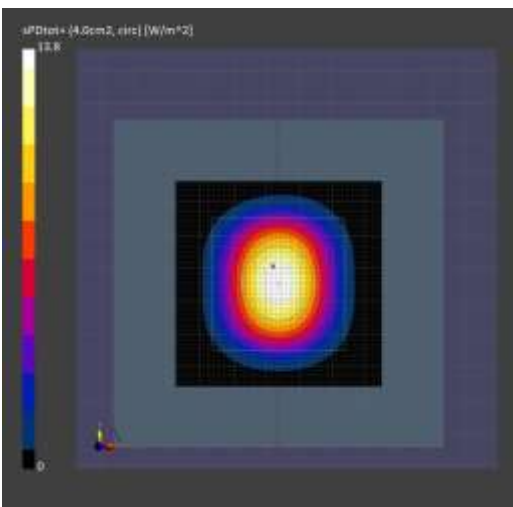
EUT Type: Mobile Phone
Room Temperature: 20.6°C
Test Date: 09/26/2023
Plot No.: V7

Model, Manufacturer	Dimensions [mm]
Device,	100.0 x 100.0 x 100.0
Exposure Conditions	
Phantom Section	Position, Test Distance [mm]
5G	FRONT, 5.55
	Group, UID Frequency [MHz] Conversion Factor
	CW, 0-- 30000.0, 30000 1.0
Hardware Setup	
Probe, Calibration Date	DAE, Calibration Date
EUmmWV3 - SN9486_F1-55GHz, 2023-06-19	DAE4 Sn780, 2023-07-04
Scans Setup	
Scan Type	5G Scan
Grid Extents [mm]	60.0 x 60.0
Grid Steps [lambda]	0.25 x 0.25
Sensor Surface [mm]	5.55
Measurement Results	
Scan Type	5G Scan
Avg. Area [cm2]	4.00
psPDn+ [W/m2]	13.6
psPDtot+ [W/m2]	13.8
psPDmod+ [W/m2]	13.9
E _{max} [V/m]	84.4
Power Drift [dB]	0.08



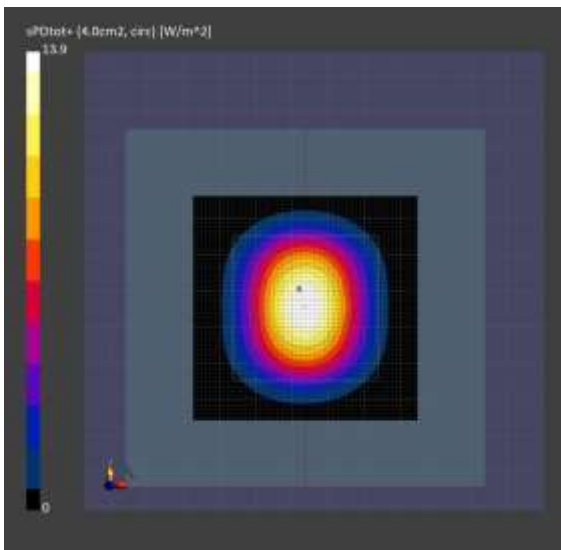
EUT Type: Mobile Phone
Room Temperature: 22.7°C
Test Date: 09/27/2023
Plot No.: V8

Model, Manufacturer	Dimensions [mm]
Device,	100.0 x 100.0 x 100.0
Exposure Conditions	
Phantom Section Position, Test Distance [mm]	Group, UID Frequency [MHz Conversion Factor
5G FRONT, 5.55	CW, 0-- 30000.0, 30000 1.0
Hardware Setup	
Probe, Calibration Date	DAE, Calibration Date
EUmmWV3 - SN9486_F1-55GHz, 2023-06-19	DAE4 Sn780, 2023-07-04
Scans Setup	
Scan Type	5G Scan
Grid Extents [mm]	60.0 x 60.0
Grid Steps [lambda]	0.25 x 0.25
Sensor Surface [mm]	5.55
Measurement Results	
Scan Type	5G Scan
Avg. Area [cm2]	4.00
psPDn+ [W/m2]	13.6
psPDtot+ [W/m2]	13.8
psPDmod+ [W/m2]	13.9
E _{max} [V/m]	84.3
Power Drift [dB]	-0.02



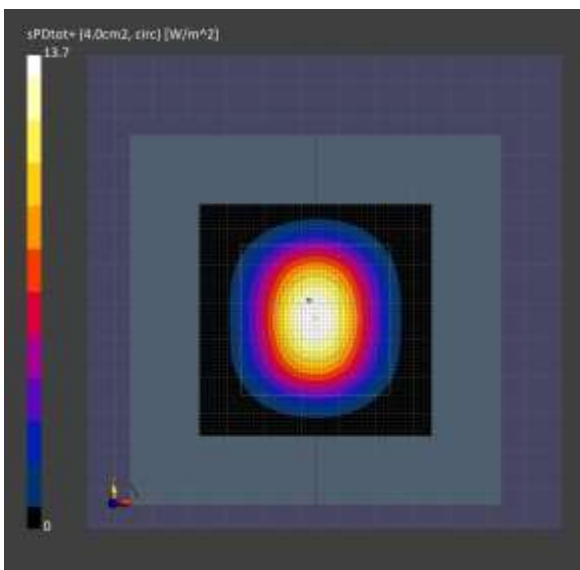
EUT Type: Mobile Phone
Room Temperature: 21.6°C
Test Date: 09/28/2023
Plot No.: V9

Model, Manufacturer	Dimensions [mm]
Device,	100.0 x 100.0 x 100.0
Exposure Conditions	
Phantom Section Position, Test Distance [mm]	Group, UID Frequency [MHz Conversion Factor
5G FRONT, 5.55	CW, 0-- 30000.0, 30000 1.0
Hardware Setup	
Probe, Calibration Date	DAE, Calibration Date
EUmmWV3 - SN9486_F1-55GHz, 2023-06-19	DAE4 Sn780, 2023-07-04
Scans Setup	
Scan Type	5G Scan
Grid Extents [mm]	60.0 x 60.0
Grid Steps [lambda]	0.25 x 0.25
Sensor Surface [mm]	5.55
Measurement Results	
Scan Type	5G Scan
Avg. Area [cm2]	4.00
psPDn+ [W/m2]	13.7
psPDtot+ [W/m2]	13.9
psPDmod+ [W/m2]	13.9
E _{max} [V/m]	84.4
Power Drift [dB]	-0.04



EUT Type: Mobile Phone
Room Temperature: 22.8°C
Test Date: 09/29/2023
Plot No.: V10

Model, Manufacturer	Dimensions [mm]
Device,	100.0 x 100.0 x 100.0
Exposure Conditions	
Phantom Section Position, Test Distance [mm]	Group, UID Frequency [MHz Conversion Factor
5G FRONT, 5.55	CW, 0-- 30000.0, 30000 1.0
Hardware Setup	
Probe, Calibration Date	DAE, Calibration Date
EUmmWV3 - SN9486_F1-55GHz, 2023-06-19	DAE4 Sn780, 2023-07-04
Scans Setup	
Scan Type	5G Scan
Grid Extents [mm]	60.0 x 60.0
Grid Steps [lambda]	0.25 x 0.25
Sensor Surface [mm]	5.55
Measurement Results	
Scan Type	5G Scan
Avg. Area [cm2]	4.00
psPDn+ [W/m2]	13.5
psPDtot+ [W/m2]	13.7
psPDmod+ [W/m2]	13.8
E _{max} [V/m]	84.3
Power Drift [dB]	-0.02



EUT Type: Mobile Phone
Room Temperature: 22.1°C
Test Date: 09/30/2023
Plot No.: V11

Model, Manufacturer	Dimensions [mm]
Device,	100.0 x 100.0 x 100.0
Exposure Conditions	
Phantom Section Position, Test Distance [mm]	Group, UID Frequency [MHz Conversion Factor
5G FRONT, 5.55	CW, 0-- 30000.0, 30000 1.0
Hardware Setup	
Probe, Calibration Date	DAE, Calibration Date
EUmmWV3 - SN9486_F1-55GHz, 2023-06-19	DAE4 Sn780, 2023-07-04
Scans Setup	
Scan Type	5G Scan
Grid Extents [mm]	60.0 x 60.0
Grid Steps [lambda]	0.25 x 0.25
Sensor Surface [mm]	5.55
Measurement Results	
Scan Type	5G Scan
Avg. Area [cm2]	4.00
psPDn+ [W/m2]	13.7
psPDtot+ [W/m2]	13.9
psPDmod+ [W/m2]	13.9
E _{max} [V/m]	84.5
Power Drift [dB]	-0.01

