

Appendix B. – Power Density Test Plots

Test Laboratory: HCT CO., LTD
 EUT Type: Mobile Phone
 Room Temperature: 21.5°C
 Test Date: 09/20/2023
 Plot No.: 1

Model, Manufacturer	Dimensions [mm]	IMEI	DUT Type
Device,	158.2 x 77.9 x 8.0		Phone
Exposure Conditions			
Phantom Section	Position, Test Distance [mm]	Frequency [MHz], Channel Number	Conversion Factor
5G	BACK, 2.00	25200.0, 25200000	1.0

Hardware Setup

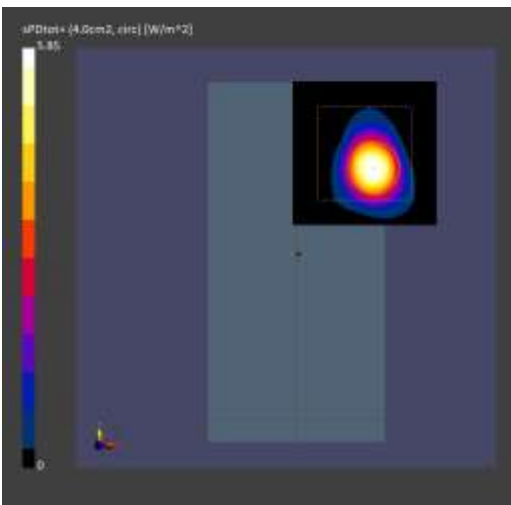
Phantom	Medium	Probe, Calibration Date	DAE, Calibration Date
mmWave	Air -	EUmmWV3 - SN9486_F1-55GHz, 2023-06-19	DAE4 Sn780, 2023-07-04

Scans Setup

Scan Type	5G Scan
Grid Extents [mm]	60.0 x 60.0
Grid Steps [lambda]	0.17158298424721127 x 0.17158298424721127
Sensor Surface [mm]	2.0

Measurement Results

Scan Type	5G Scan
Avg. Area [cm2]	4.00
psPDn+ [W/m2]	2.77
psPDtot+ [W/m2]	5.85
psPDmod+ [W/m2]	6.26
E _{max} [V/m]	86.1
Power Drift [dB]	0.05



Test Laboratory: HCT CO., LTD
 EUT Type: Mobile Phone
 Room Temperature: 22.4°C
 Test Date: 09/21/2023
 Plot No.: 2

Model, Manufacturer	Dimensions [mm]	IMEI	DUT Type
Device,	158.2 x 77.9 x 8.0		Phone
Exposure Conditions			
Phantom Section	Position, Test Distance [mm]	Frequency [MHz], Channel Number	Conversion Factor
5G	EDGE RIGHT, 2.00	25200.0, 25200000	1.0

Hardware Setup

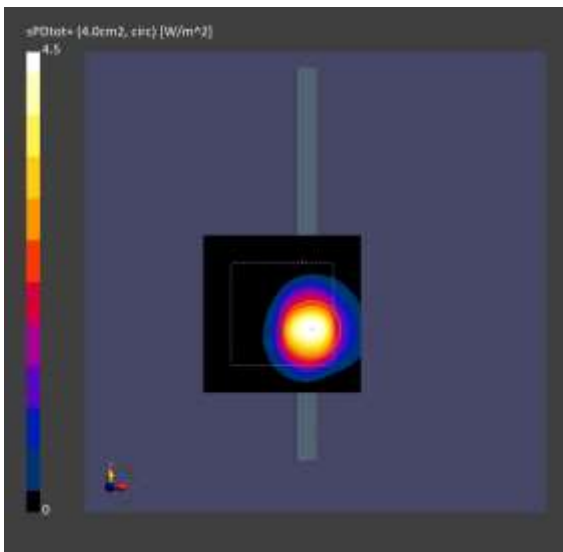
Phantom	Medium	Probe, Calibration Date	DAE, Calibration Date
mmWave	Air -	EUmmWV3 - SN9486_F1-55GHz, 2023-06-19	DAE4 Sn780, 2023-07-04

Scans Setup

Scan Type	5G Scan
Grid Extents [mm]	60.0 x 60.0
Grid Steps [lambda]	0.17158298424721127 x 0.17158298424721127
Sensor Surface [mm]	2.0

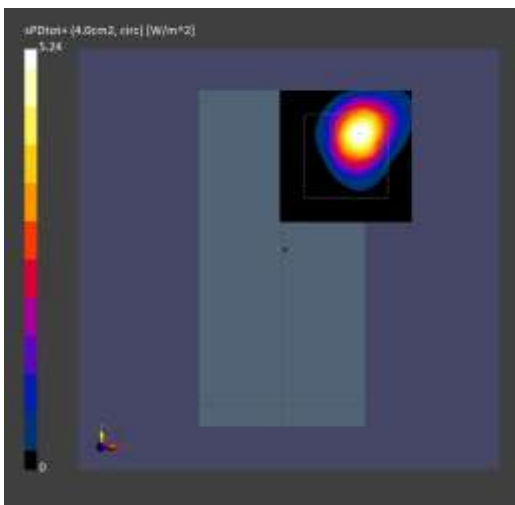
Measurement Results

Scan Type	5G Scan
Avg. Area [cm2]	4.00
psPDn+ [W/m2]	4.18
psPDtot+ [W/m2]	4.50
psPDmod+ [W/m2]	4.82
E _{max} [V/m]	92.7
Power Drift [dB]	0.14



Test Laboratory: HCT CO., LTD
 EUT Type: Mobile Phone
 Room Temperature: 21.8°C
 Test Date: 09/22/2023
 Plot No.: 3

Model, Manufacturer	Dimensions [mm]	IMEI	DUT Type
Device,	158.2 x 77.9 x 8.0		Phone
Exposure Conditions			
Phantom Section Position, Test Distance [mm]	Frequency [MHz], Channel Number	Conversion Factor	
5G BACK, 2.00	39949.9, 39949900	1.0	
Hardware Setup			
Phantom Medium	Probe, Calibration Date	DAE, Calibration Date	
mmWave Air -	EUmmWV3 - SN9486_F1-55GHz, 2023-06-19	DAE4 Sn780, 2023-07-04	
Scans Setup			
Scan Type	5G Scan		
Grid Extents [mm]	60.0 x 60.0		
Grid Steps [lambda]	0.25 x 0.25		
Sensor Surface [mm]	2.0		
Measurement Results			
Scan Type	5G Scan		
Avg. Area [cm2]	4.00		
psPDn+ [W/m2]	3.29		
psPDtot+ [W/m2]	5.24		
psPDmod+ [W/m2]	5.63		
E _{max} [V/m]	88.3		
Power Drift [dB]	0.12		



Test Laboratory: HCT CO., LTD
 EUT Type: Mobile Phone
 Room Temperature: 22.1°C
 Test Date: 09/23/2023
 Plot No.: 4

Model, Manufacturer	Dimensions [mm]	IMEI	DUT Type
Device,	158.2 x 77.9 x 8.0		Phone
Exposure Conditions			
Phantom Section	Position, Test Distance [mm]	Frequency [MHz], Channel Number	Conversion Factor
5G	EDGE RIGHT, 2.00	38500.0, 38500000	1.0

Hardware Setup

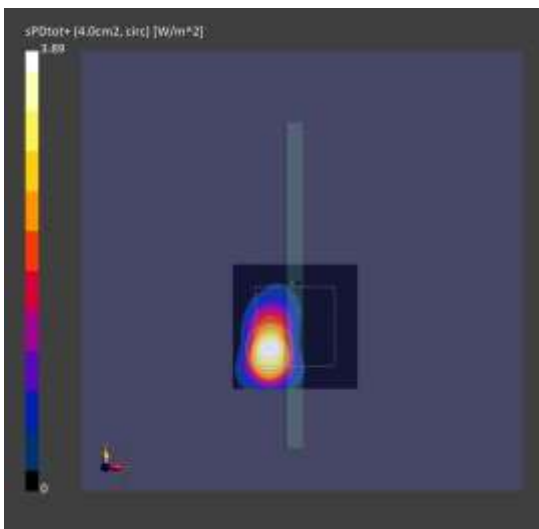
Phantom	Medium	Probe, Calibration Date	DAE, Calibration Date
mmWave	Air -	EUmmWV3 - SN9486_F1-55GHz, 2023-06-19	DAE4 Sn780, 2023-07-04

Scans Setup

Scan Type	5G Scan
Grid Extents [mm]	60.0 x 60.0
Grid Steps [lambda]	0.25 x 0.25
Sensor Surface [mm]	2.0

Measurement Results

Scan Type	5G Scan
Avg. Area [cm2]	4.00
psPDn+ [W/m2]	2.41
psPDtot+ [W/m2]	3.89
psPDmod+ [W/m2]	4.35
E _{max} [V/m]	94.3
Power Drift [dB]	0.15



Test Laboratory: HCT CO., LTD
 EUT Type: Mobile Phone
 Room Temperature: 21.9°C
 Test Date: 09/25/2023
 Plot No.: 5

Model, Manufacturer	Dimensions [mm]	IMEI	DUT Type
Device,	158.2 x 77.9 x 8.0		Phone
Exposure Conditions			
Phantom Section	Position, Test Distance [mm]	Frequency [MHz], Channel Number	Conversion Factor
5G	Back, 2.00	27550.1, 27550100	1.0

Hardware Setup

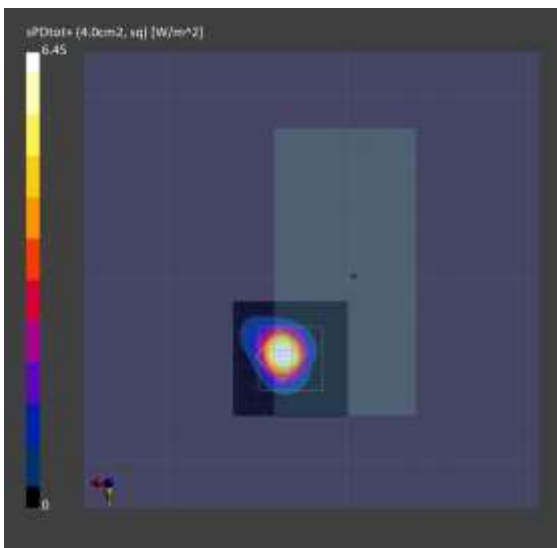
Phantom	Medium	Probe, Calibration Date	DAE, Calibration Date
mmWave	Air -	EUmmWV3 - SN9486_F1-55GHz, 2023-06-19	DAE4 Sn780, 2023-07-04

Scans Setup

Scan Type	5G Scan
Grid Extents [mm]	60.0 x 60.0
Grid Steps [lambda]	0.18758445929797996 x 0.18758445929797996
Sensor Surface [mm]	2.0

Measurement Results

Scan Type	5G Scan
Avg. Area [cm2]	4.00
psPDn+ [W/m2]	4.21
psPDtot+ [W/m2]	6.34
psPDmod+ [W/m2]	6.77
E _{max} [V/m]	104
Power Drift [dB]	-0.06



Test Laboratory: HCT CO., LTD
 EUT Type: Mobile Phone
 Room Temperature: 21.9°C
 Test Date: 09/25/2023
 Plot No.: 6

Model, Manufacturer	Dimensions [mm]	IMEI	DUT Type
Device,	158.2 x 77.9 x 8.0		Phone
Exposure Conditions			
Phantom Section	Position, Test Distance [mm]	Frequency [MHz], Channel Number	Conversion Factor
5G	EDGE RIGHT, 2.00	27550.1, 27550100	1.0

Hardware Setup

Phantom	Medium	Probe, Calibration Date	DAE, Calibration Date
mmWave	Air -	EUmmWV3 - SN9486_F1-55GHz, 2023-06-19	DAE4 Sn780, 2023-07-04

Scans Setup

Scan Type	5G Scan
Grid Extents [mm]	60.0 x 60.0
Grid Steps [lambda]	0.19269041484905072 x 0.19269041484905072
Sensor Surface [mm]	2.0

Measurement Results

Scan Type	5G Scan
Avg. Area [cm2]	4.00
psPDn+ [W/m2]	5.90
psPDtot+ [W/m2]	6.28
psPDmod+ [W/m2]	6.51
E _{max} [V/m]	105
Power Drift [dB]	-0.02

